

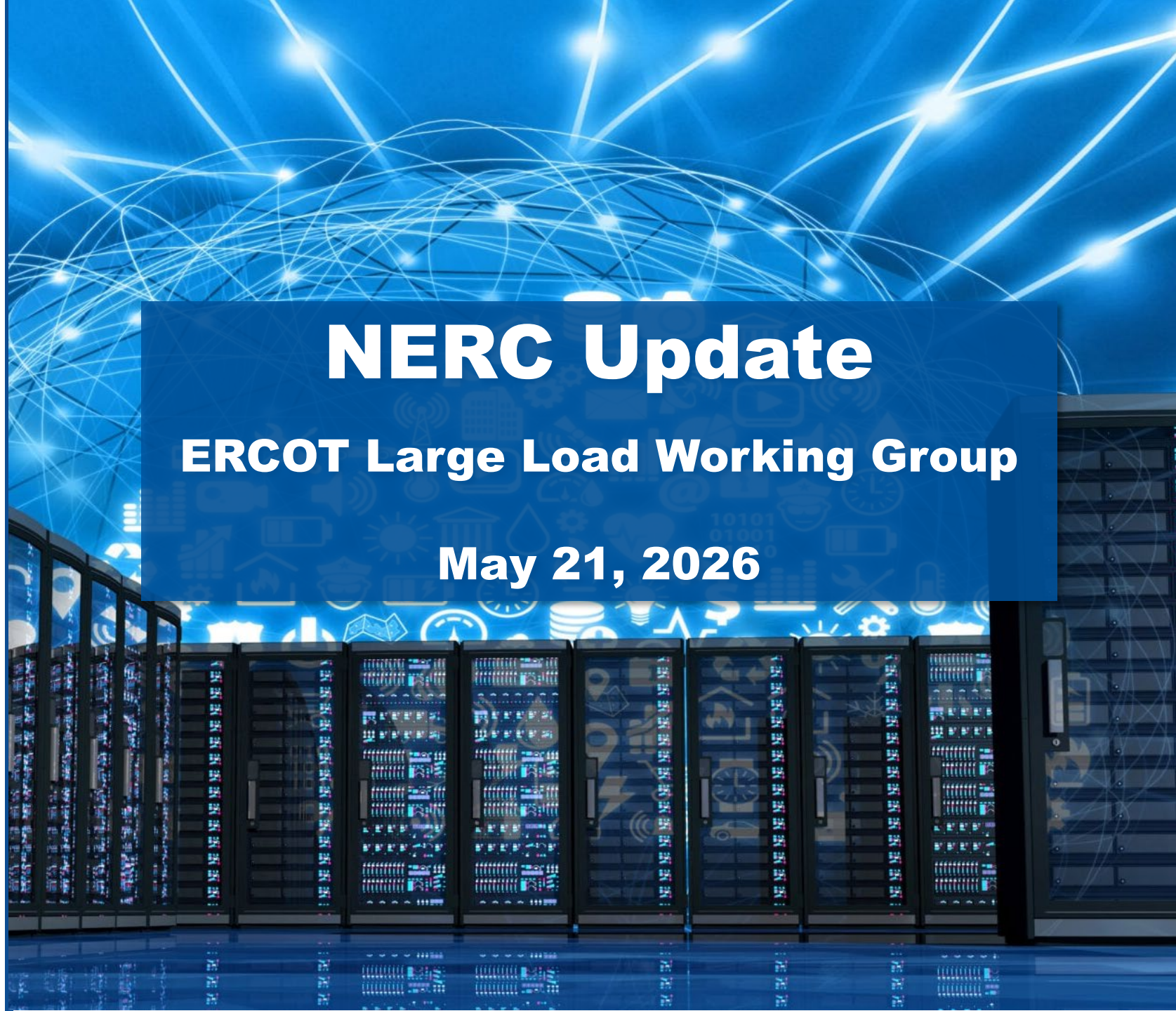


**TEXAS RE**

# **NERC Update**

**ERCOT Large Load Working Group**

**May 21, 2026**

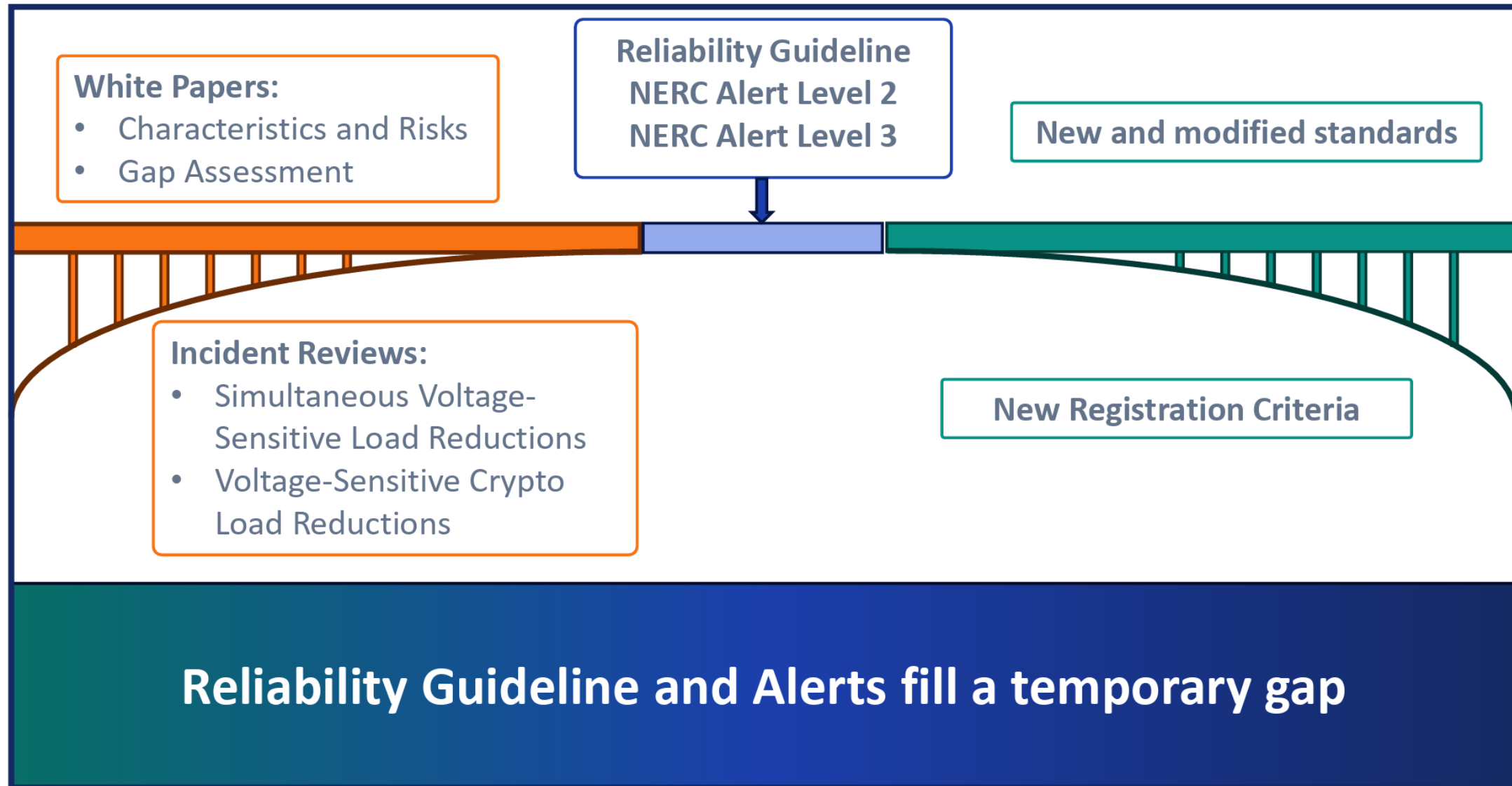


# NERC Large Loads Action Plan: 2026-2027 Timeline

Q1	Q2	Q3	Q4	Q1-Q4
2026				2027
<ul style="list-style-type: none"> <li>• Publish white paper 2 (March 12)</li> <li>• Publish report on Level 2 (March 17)</li> <li>• SC appoint drafting team and post SAR (March 18)</li> <li>• Webinar on Large Load Action Plan (March 30)</li> <li>• Review comments on Reliability Guideline (March)</li> </ul>	<ul style="list-style-type: none"> <li>• Post registry criteria and SAR (April 1)</li> <li>• Publish Reliability Guideline, <i>subject to RSTC approval</i> (May)</li> <li>• Issue Level 3 Alert <i>subject to Board approval</i> (May)</li> <li>• Initiate standards drafting, <i>subject to SC authorization</i> (June 9)</li> <li>• Publish the Data Center Load Modeling Technical Reference, <i>subject to RSTC approval</i> (June 10)</li> </ul>	<ul style="list-style-type: none"> <li>• Post registry criteria, glossary and standard(s) for comment (August 19)</li> <li>• Level 3 Alert responses due (August)</li> <li>• Organize a Data Center Load Modeling Workshop (September 15-16)</li> </ul>	<ul style="list-style-type: none"> <li>• Post registry criteria, glossary and standard(s) for additional comment period (October 21, <i>if needed</i>)</li> <li>• Request Board approval of registry criteria, glossary and standard(s) (December 5)</li> <li>• File registry criteria, glossary, and standards <i>subject to Board approval</i> (December 31)</li> </ul>	<ul style="list-style-type: none"> <li>• Draft and file additional applicable Reliability Standards, <i>as needed</i></li> </ul>

- Draft registry criteria comments collected as of May 15 and discussed at NERC Organization Registration and Certification Subcommittee – for proposed Computational Load Entity
- [Reliability Guideline Risk Mitigation for Large Loads](#) approved by Reliability and Security Technical Committee (RSTC) and posted April 30
- Level 3 Essential Action Alert issued on May 4, acknowledgements received May 11
- Standards Authorizatoin Request(SAR) for Project 2026-02 Computational Loads posted, 58 sets of industry comments received prior to April 30, advisory group nominations received, drafting team meeting regularly
- Data Center Load Modeling Technical reference in review by RSTC prior to June meeting

# Building the Bridge to Future Reliability Standards



# Appendix A - Reliability Guideline: Risk Mitigation for Emerging Large Loads – Entity Roles and Reliability Risks

Category	Recommendation	LLE	DP	TO	TP	PC	TOP	BA	RC
Data Collection and Modeling	Provide steady-state, dynamic, and other data	P	L	L	SR	SR			
	Install high-speed FR, DDR, and SER	L	C	C					
	Provide high-speed recording data for post-event analysis	P	C	C	C	C	SR	SR	SR
	Provide updates to modeling data (as-built)	P	L	L	SR	SR			
	Provide real-time electrical measurements	P		P			SR	SR	SR
	Provide near-term demand forecasts	P		C				SR	SR
	Perform model quality assessment, model verification, model validation	L			SR	SR			
Interconnection	Collect data and share with relevant entities	C	L	L	SR	SR	SR	SR	SR
	Study reliability impacts of new large load	C	C	C	L	L	M	M	M
	Periodic near-term studies for collective impact of new large loads	C	C	C	L	L	M	M	M
	Comprehensive commissioning process for large loads	C	C	C	C	C	SR	SR	SR
	Develop EMT screening criteria where needed	M	C	C	SR	SR			M
Long-Term Planning	Study reliability impacts of new large load	C	C	C	L	L	M	M	M
	Resource adequacy analysis considering unique risks of large loads	C	C	C					

**C** = Coordinate

**L** = Lead

**M** = Monitor

**P** = Provide

**SR** = Specify Requirements

# Appendix A from Reliability Guideline on LL Risk Mitigation – cont'd

**P** = Provide

**L** = Lead

**C** = Coordinate

**SR** = Specify Requirements

**M** = Monitor

Category	Recommendation	LLE	DP	TO	TP	PC	TOP	BA	RC
<b>Operations and Balancing</b>	Verify communications (phone communications, telemetry, etc.)	C					SR	SR	SR
	Integrate into operational systems (forecasting, outages, day-ahead studies)	C					SR	SR	SR
	Conduct commissioning tests of the large load	C		C			SR	SR	SR
	Post-commissioning testing and verification	C					SR	SR	SR
	Provide real-time electrical measurements	P		P			SR	SR	SR
	Provide near-term demand forecasts	P		C				SR	SR
	Specify data requirements for large loads real-time analysis and monitoring	C					SR	SR	SR
	Prepare for largest expected load contingency (CILR, ramping, or other)	C			C	C		SR	SR
	Minimize variability via large load facility software mitigations	L						SR	SR
	Respond to operating instructions	L						SR	SR
Event analysis	C			L	L	L	L	L	
<b>Stability</b>	Define disturbance performance criteria based on studies	C	C	C	C	SR	C	C	SR
	Study and mitigate risks from CILR events	C	C	C	L	L	M	L	L
	Design and operate facilities to follow disturbance performance criteria	L	C	C	SR	SR	C	C	SR
	Study, mitigate, and monitor oscillations from large loads	C	M	L	L	L	C	M	SR
<b>Power Quality</b>	Study, mitigate, and monitor power quality risks from large loads	C	M	L	L	C	C		C
<b>Physical and Cyber Security</b>	Holistic risk assessment	L							
	Implement security-by-design practices	L							
	Study and plan for operational interdependency between utility and large loads	C	C	C	C	C	C	C	L
	Implement physical security considerations	L							
	Implement cyber security considerations	L							
<b>Resilience</b>	Monitor any large loads involved in manual load shed, UFLS, and UVLS	C	C	C			L	L	
	Consider integration of large loads into UFLS and UVLS schemes	C	L	L			L	L	

Questions?