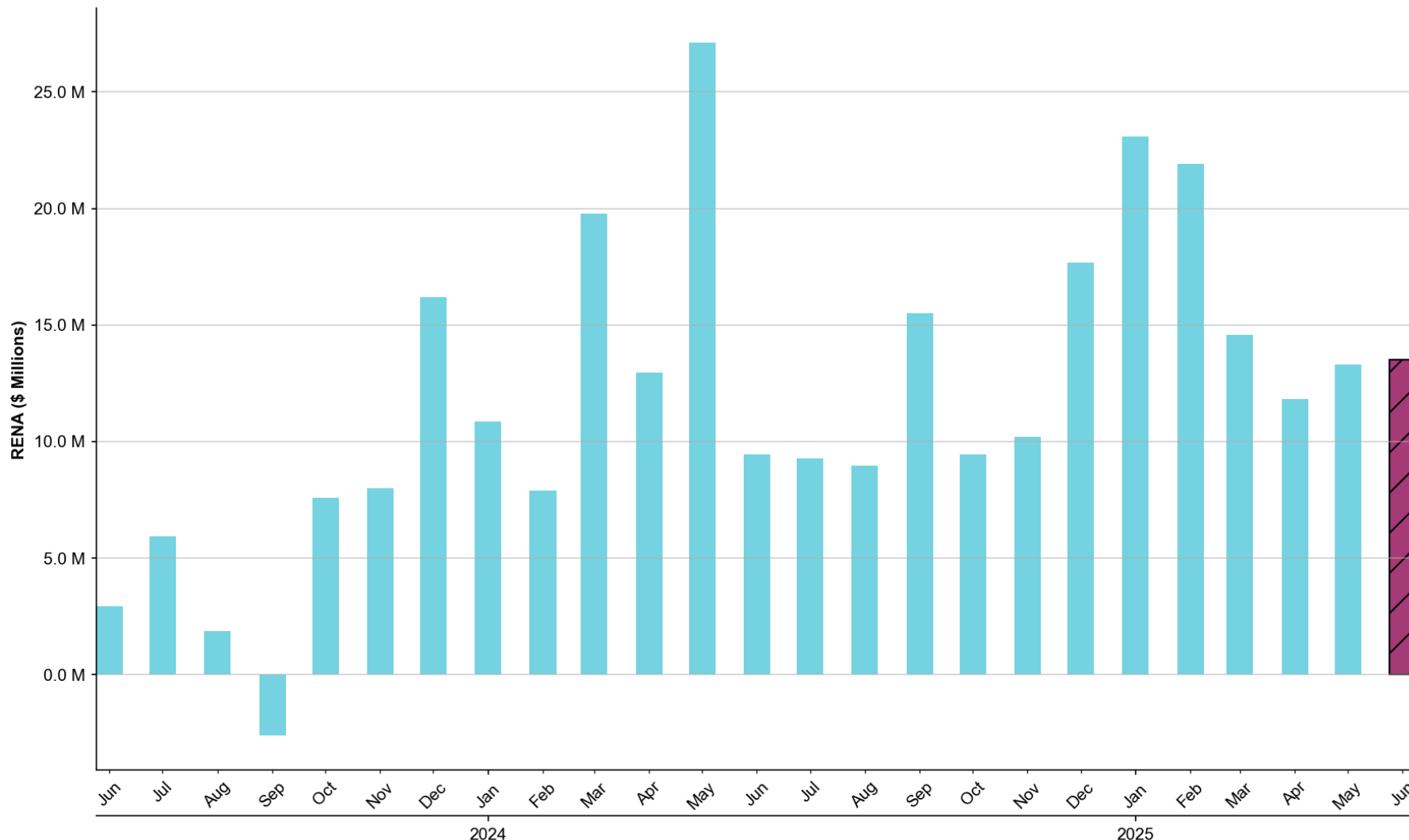


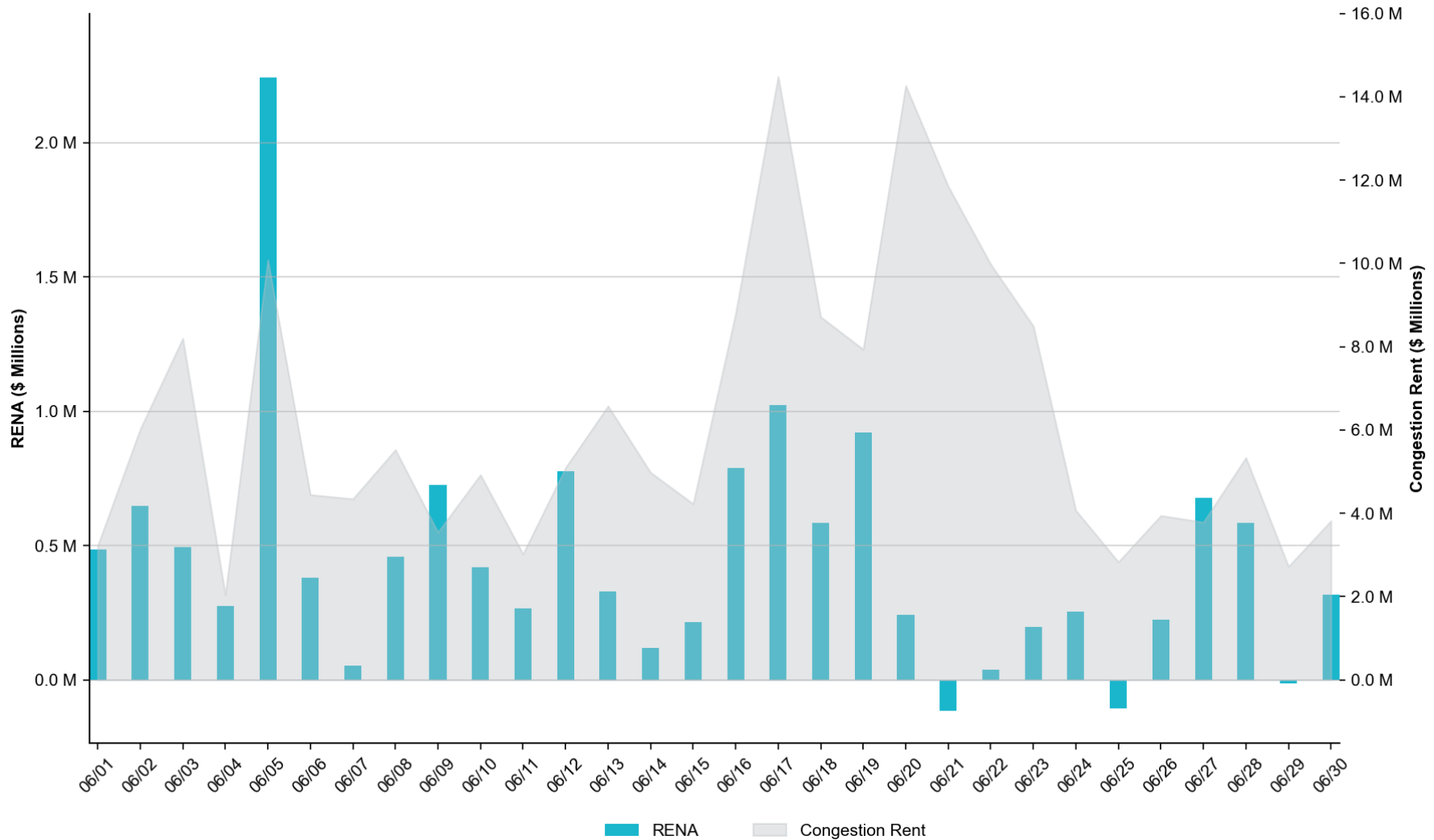
Historical Monthly RENA Totals

The total RENA in June of **\$13.51M** represents the **68th** percentile compared to the monthly RENA totals across the previous two years.



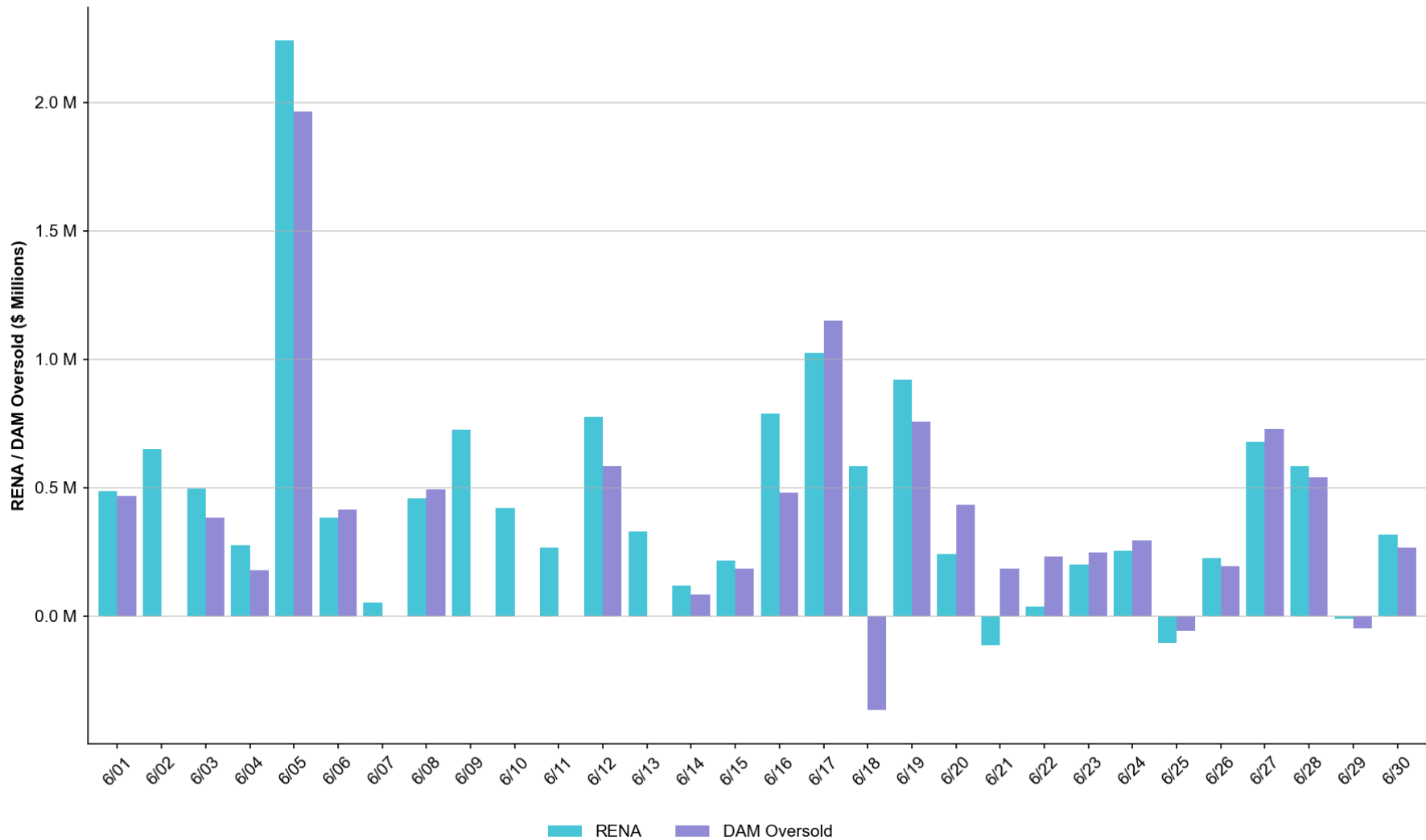
Daily RENA vs. Real-Time Congestion Rent

The total RENA in June was approximately **\$13.51M**, while the total Real-Time congestion rent accrued amounted to **\$187.38M**.



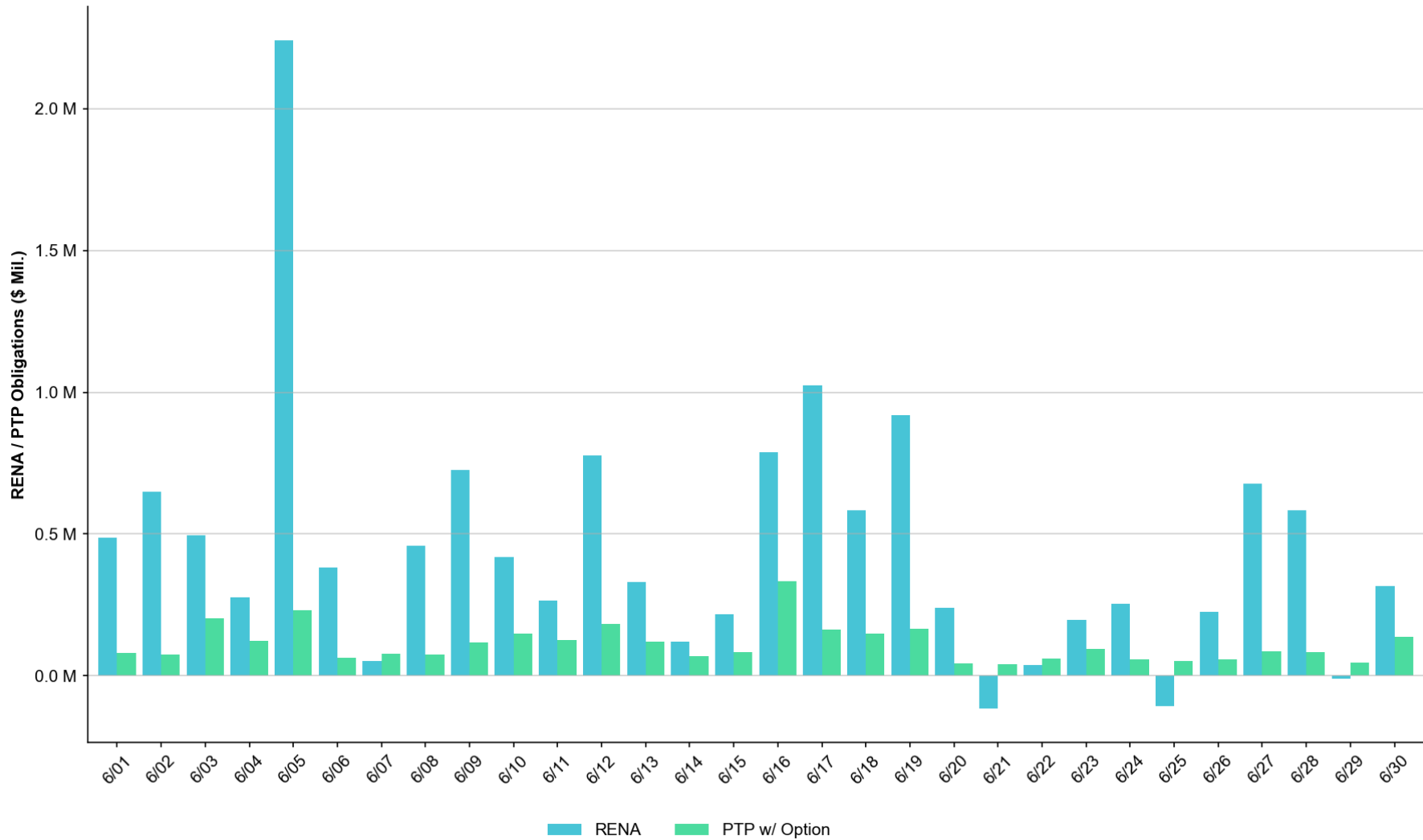
Daily RENA vs. estimated DAM Oversold

The total estimated DAM oversold in June was approximately **\$9.77M**.



Daily RENA vs. PTP w/ Links to Options

The estimated sum of PTPs w/ Links to Options in June totaled **\$3.35M**.



Operating Days with RENA exceeding \$1 million

OPERATING DAY	RENA	RT CONGESTION RENT	DAM OVERSOLD	PTP W/ OPTION
June-05	\$2.24M	\$10.09M	\$1.96M	\$0.23M

NOTES:

- DAM Oversold on an RTM constraint: The IROL BASE CASE: N_TO_H (CROSS) contributed approx. \$1.9M toward RENA, attributable to a discrepancy in the GTC limit applied in DAM and RTM.

OPERATING DAY	RENA	RT CONGESTION RENT	DAM OVERSOLD	PTP W/ OPTION
June-17	\$1.02M	\$14.49M	\$1.15M	\$0.16M

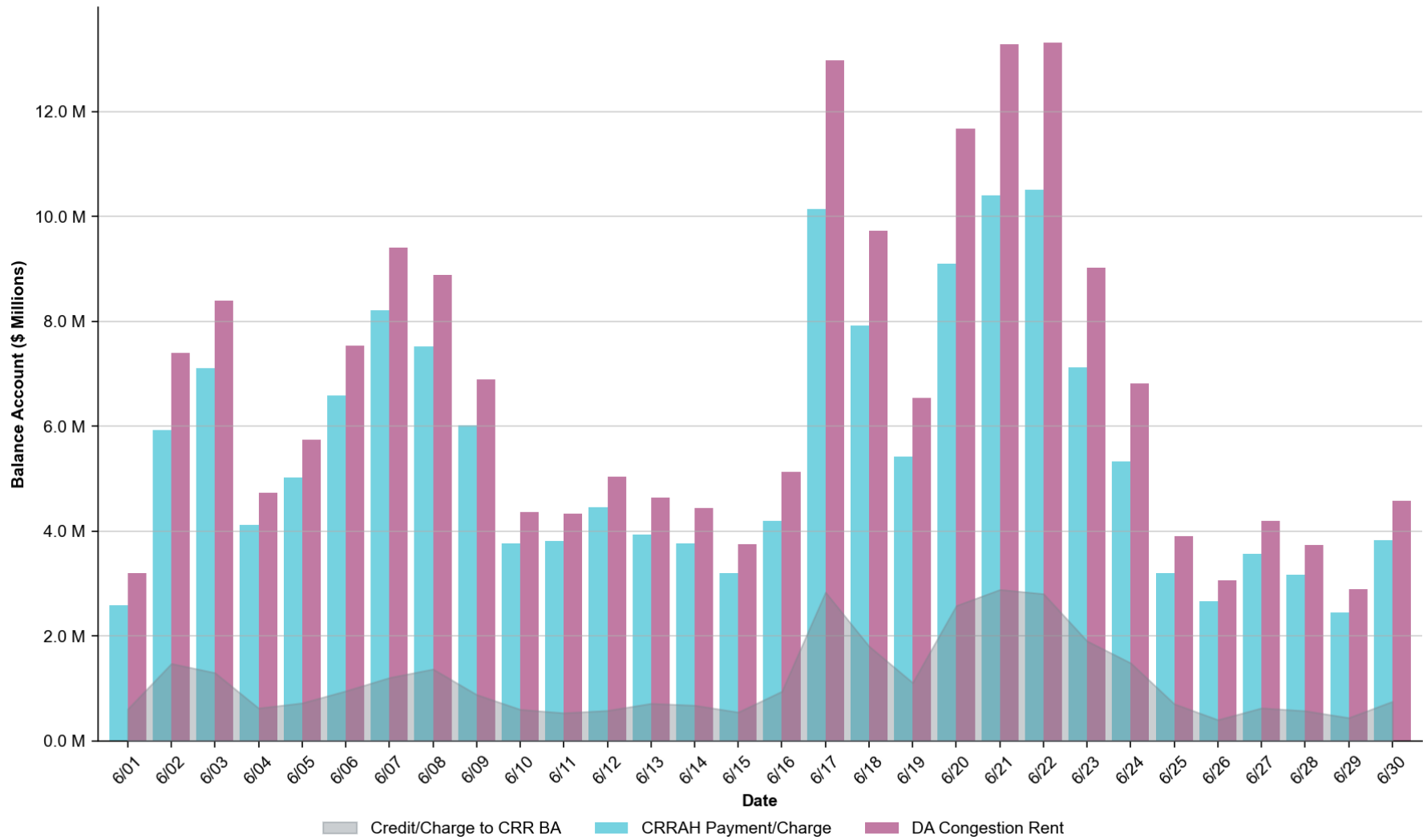
NOTES:

- DAM Oversold on an RTM constraint: The constraint MHARNED5: HAINE__LA_PAL1_1 (SOUTH) contributed approx. \$0.6M toward RENA, primarily attributable to a forced outage on a 345 kV transmission line in RTM.
- DAM Oversold on an RTM constraint: The constraint DBIGKEN5: FORTMA_YELWJC1_1 (CROSS) contributed approx. \$0.5M toward RENA, primarily attributable to PST tap differences between DAM and RTM.
- DAM Oversold on an RTM constraint: The constraint BASE CASE: NE_LOB (SOUTH) contributed approx. \$0.3M toward RENA, attributable to a discrepancy in the GTC limit used in DAM and RTM due a limit change precipitated by a forced outage on a transmission line in RTM.

Summary

- The monthly RENA observed in June totaled \$13.51M, which can be considered moderate based on the monthly totals observed over the past two years.
 - Daily RENA totals exceeded \$1 Million on 2 Operating Days.
 - The largest share of the RENA accrued was related to constraints “oversold” in DAM, which can generally be attributed to model topology differences between DAM and RTM, forced/planned outages in RTM not captured in DAM, LDF, PST and/or RAS modeling.
- The highest RENA observed in June occurred on OD 06/05 with a value of \$2.24M, which was related to discrepancy in GTC limits applied in DAM and RTM.
- PTP w/ links to options in June totaled \$3.35M, which was lower than the previous month. The value can be considered moderate based on monthly totals over the past year. The largest amount of approx. \$0.3M accrued on OD 06/16.
- The remainder of RENA was related to differences between the Congestion Rent accrued in SCED and the amount collected in Settlement.

Monthly CRR Balance Account



Abbreviations

CRR	Congestion Revenue Rights
CRRAH	Congestion Revenue Rights' Account Holders
CRRBA	Congestion Revenue Rights' Balance Account
OD	Operating Day
PTP	Point-to-Point
RENA	Revenue Neutrality Allocation Uplift