

# Monthly Review of Reliability Unit Commitment Market Impacts – March 2025

*Wholesale Market Working Group*

ERCOT Market Analysis



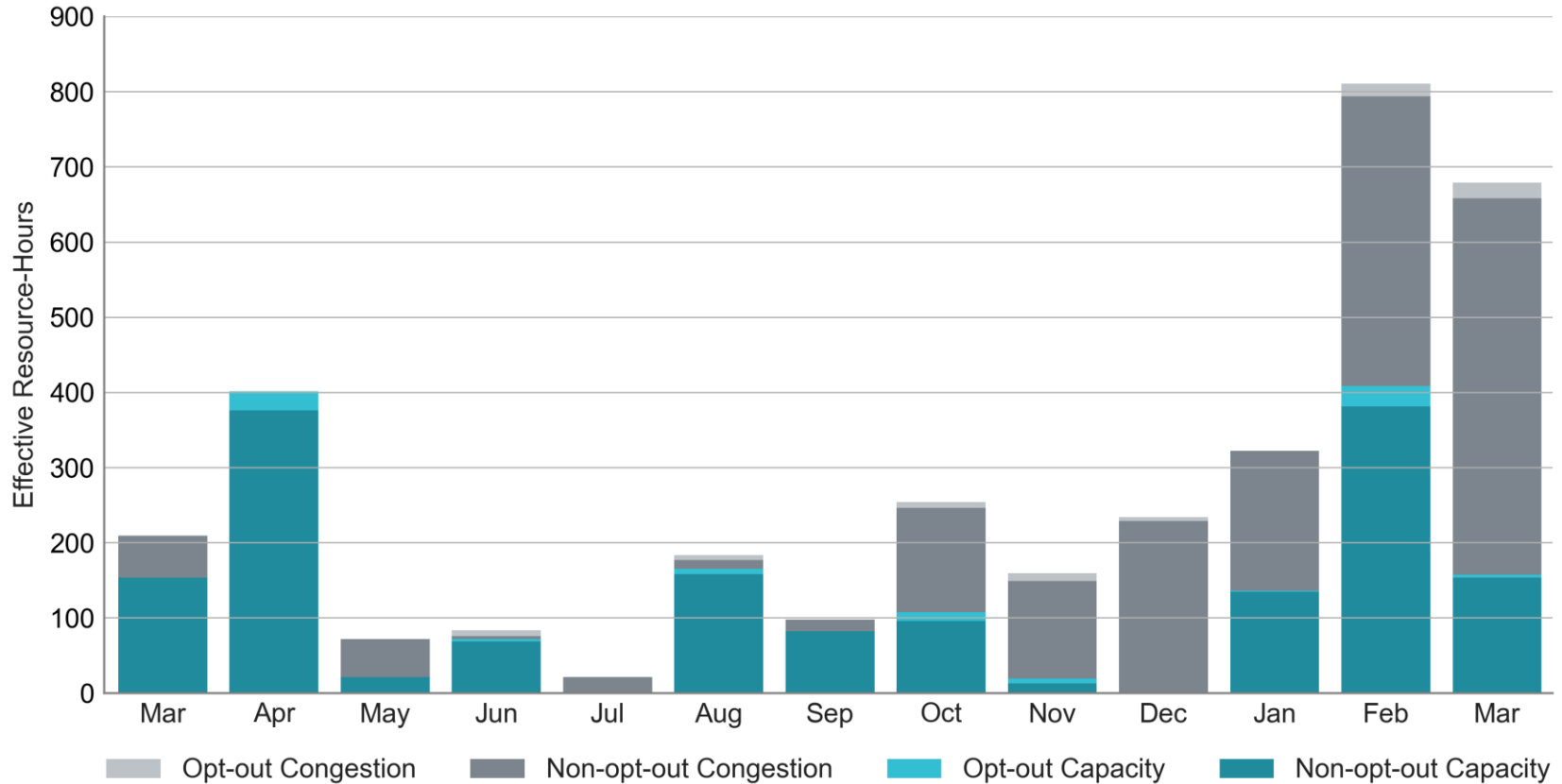
# RUC Resource-Hours

March 2025	Total	Capacity		Congestion	
		Opt-Out	Non-Opt-Out	Opt-Out	Non-Opt-Out
<b>Instructed Resource-Hours</b>					
Total Count	693.0	4.0	158.0	21.0	510.0
<b>Effective Resource-Hours*</b>					
Total Count	678.7	4.0	153.6	20.7	500.4
<b>Average Megawatts (MW) for Effective Resource-Hours</b>					
Average LSL	114.0	358.6	118.3	50.9	113.2
Average LDL	117.0	402.0	118.5	92.5	115.2
Average BP	118.9	473.3	118.5	122.2	115.9
Average HSL	347.7	503.6	335.8	218.6	355.4

\* The difference between “Instructed” and “Effective” values is a result of Resources starting up, shutting down, receiving partial hour instructions, or otherwise not being dispatchable by SCED.

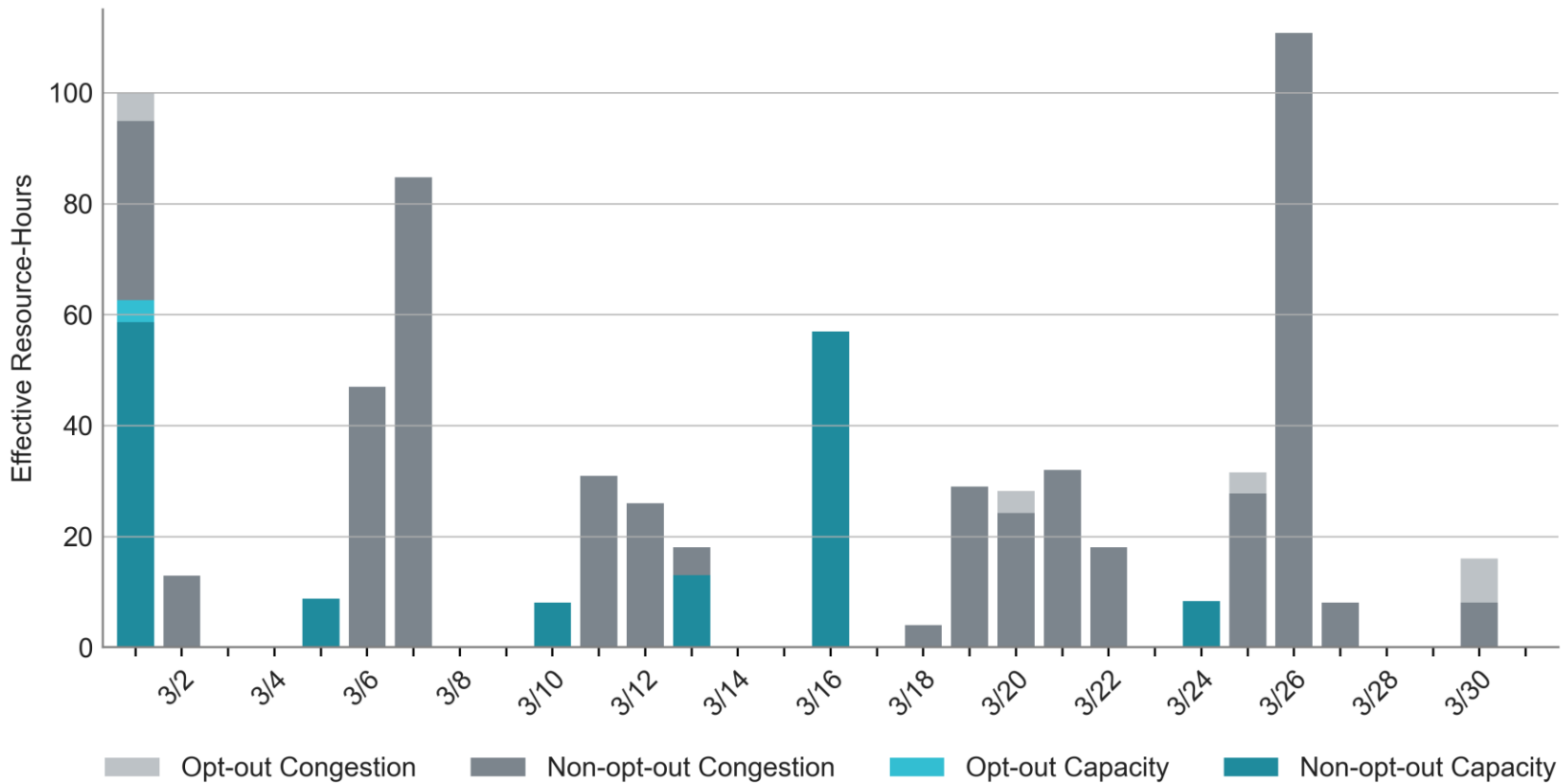
# RUC Instruction Reasons: Last 13 Months

Most RUC effective hours in March 2025 were deployed to resolve congestion.



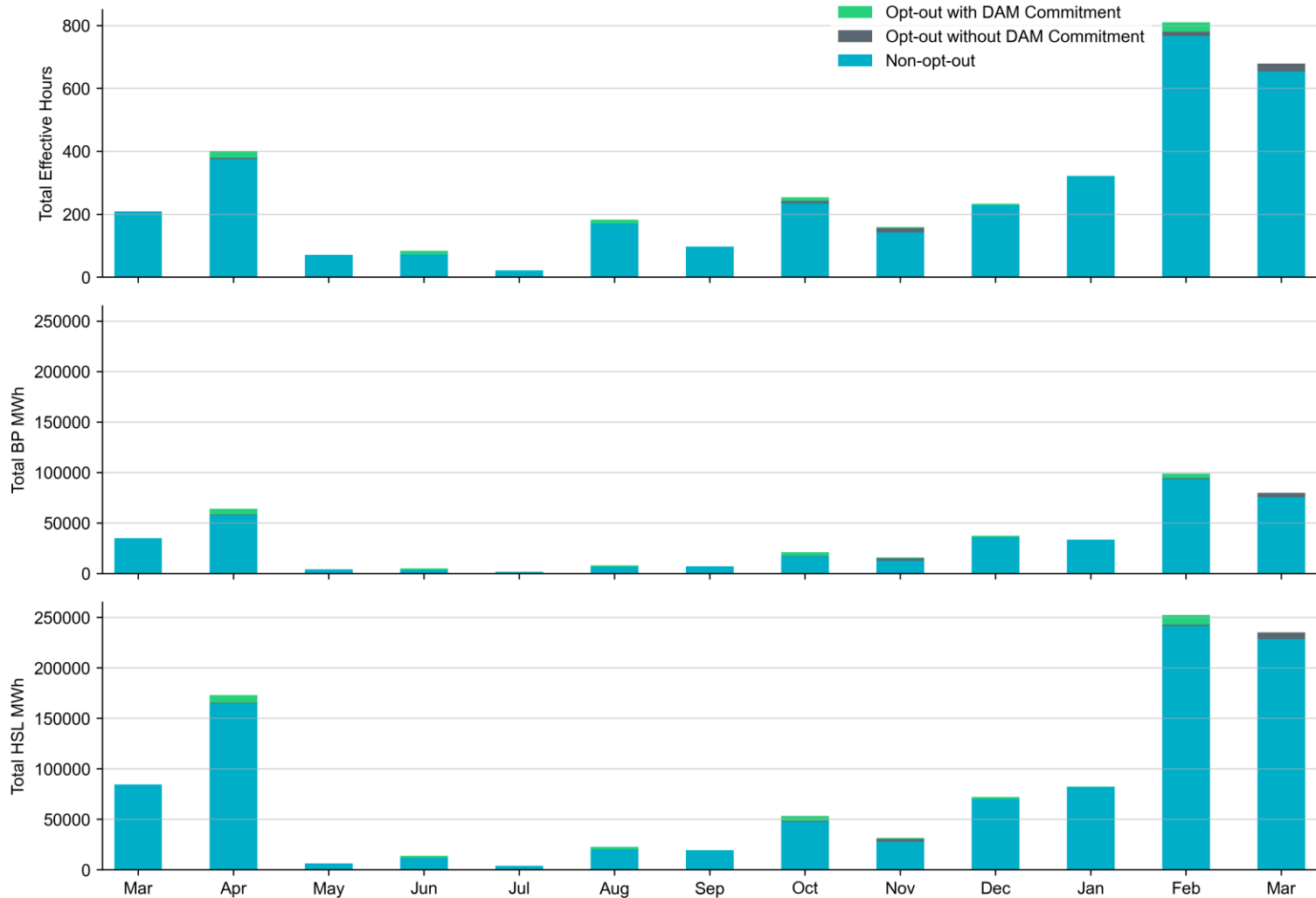
# RUC Instruction Reasons in March 2025

- 678.7 RUC effective Resource-hours.
  - 521.1 hours (77%) for congestion.

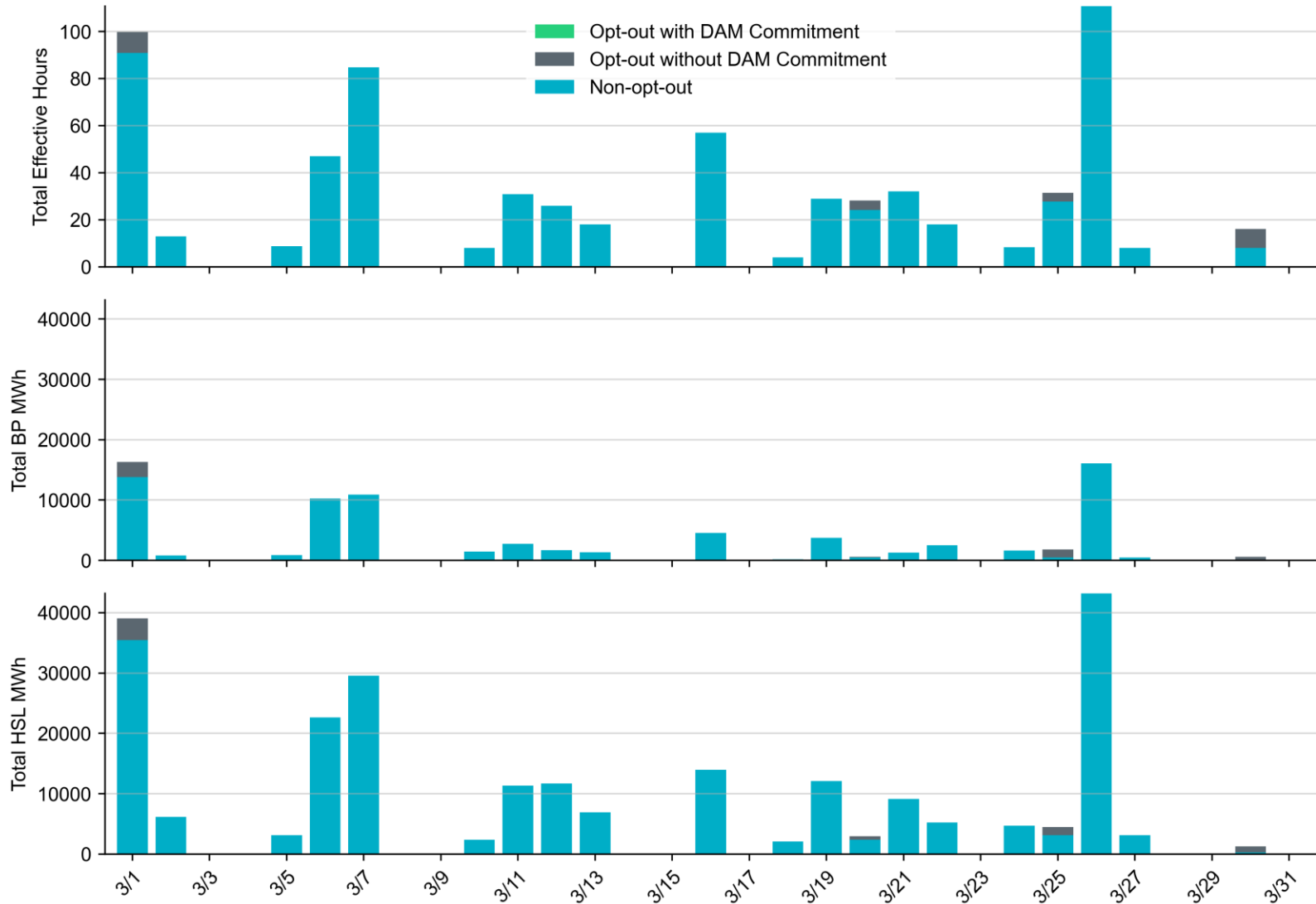


# Non-opt-out and Opt-out Totals: Last 13 Months

March 2025 had a total of 654.0 non-opt-out effective Resource-hours (96.4%) and 24.7 opt-out effective Resource-hours (3.6%).

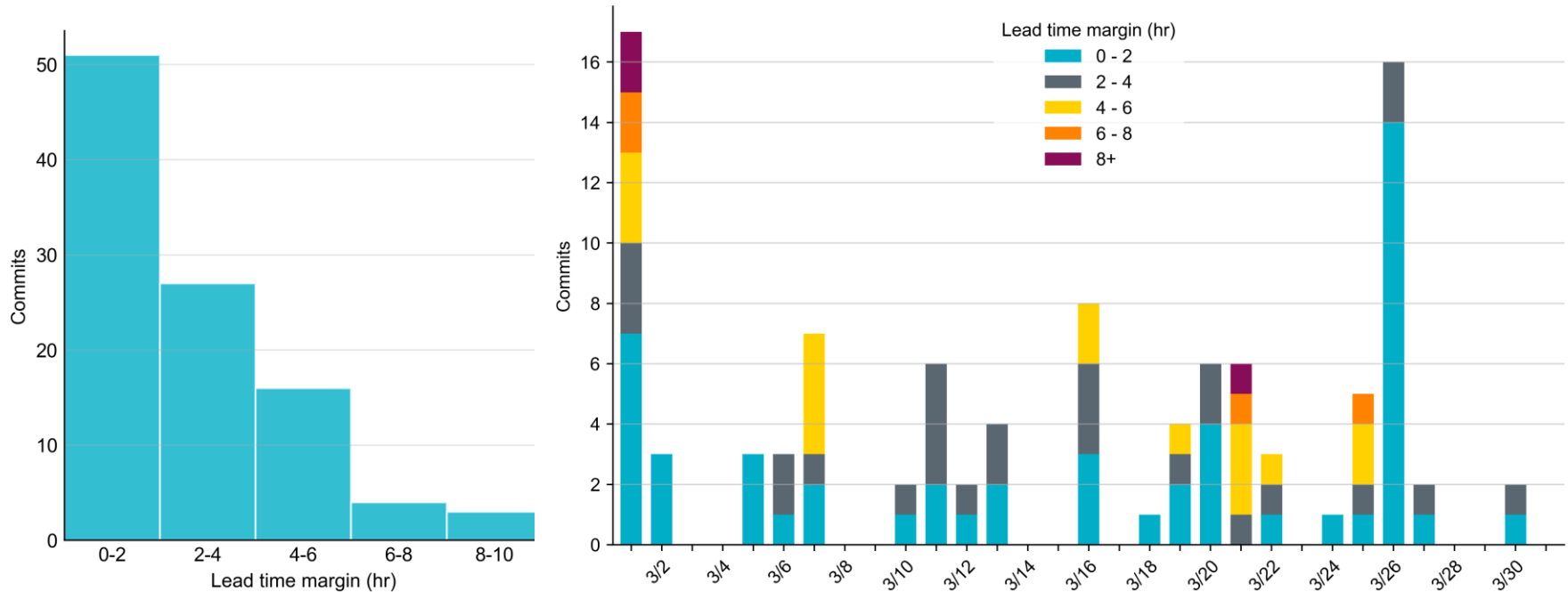


# Non-opt-out and Opt-out Totals: March 2025



# RUC Lead Time Margin: March 2025

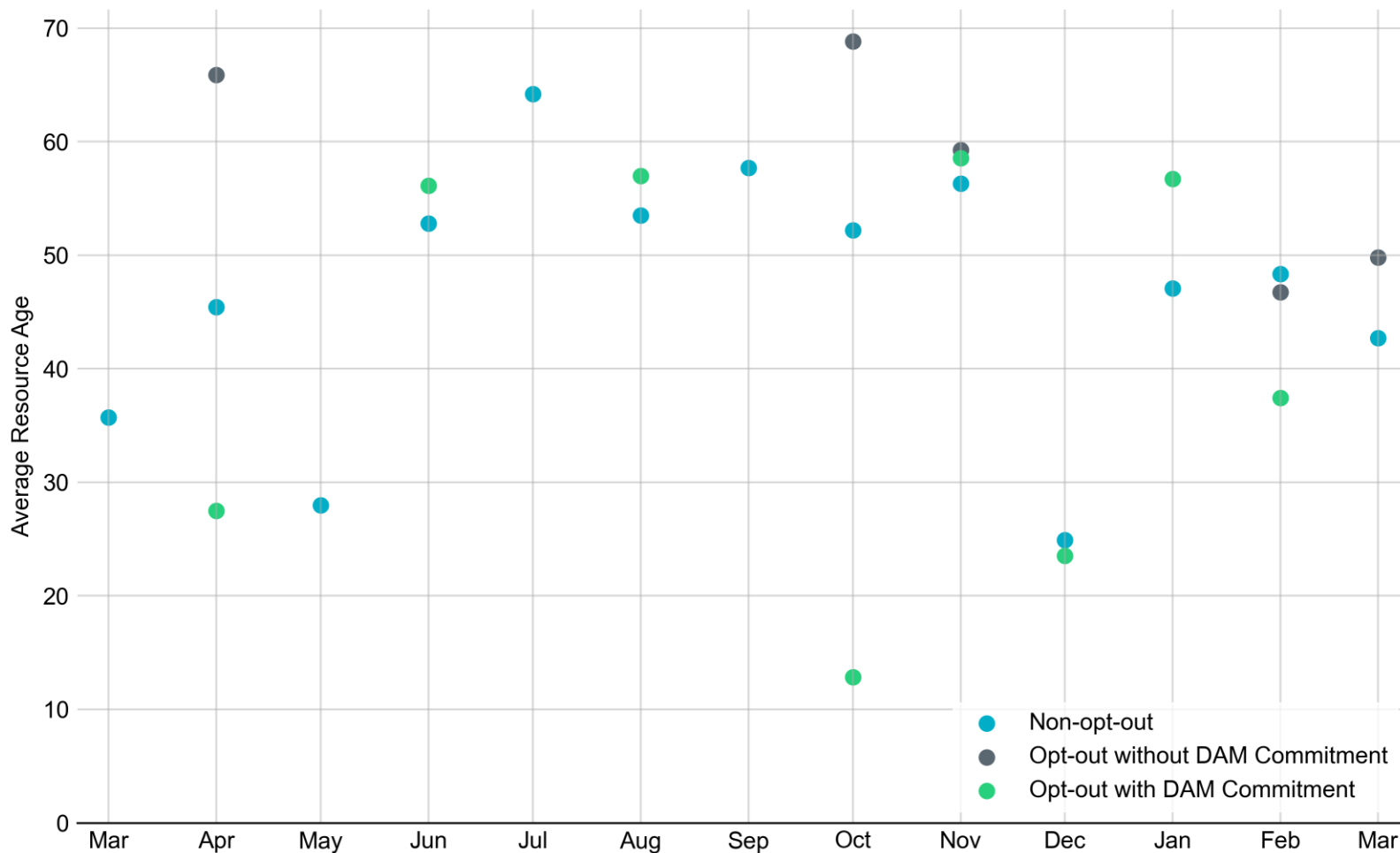
Most RUC commitment windows (50.5%) had a lead time margin of 2 hours or less.



- **Lead time** refers to the length of time between a RUC instruction and the start of the commitment window.
- **Lead time margin** is the difference between lead time and the Resource's startup time.
  - In cases where a Resource is committed for multiple back-to-back time blocks, lead time margin is calculated from the first instruction.

# Average Resource Age: Last 13 Months

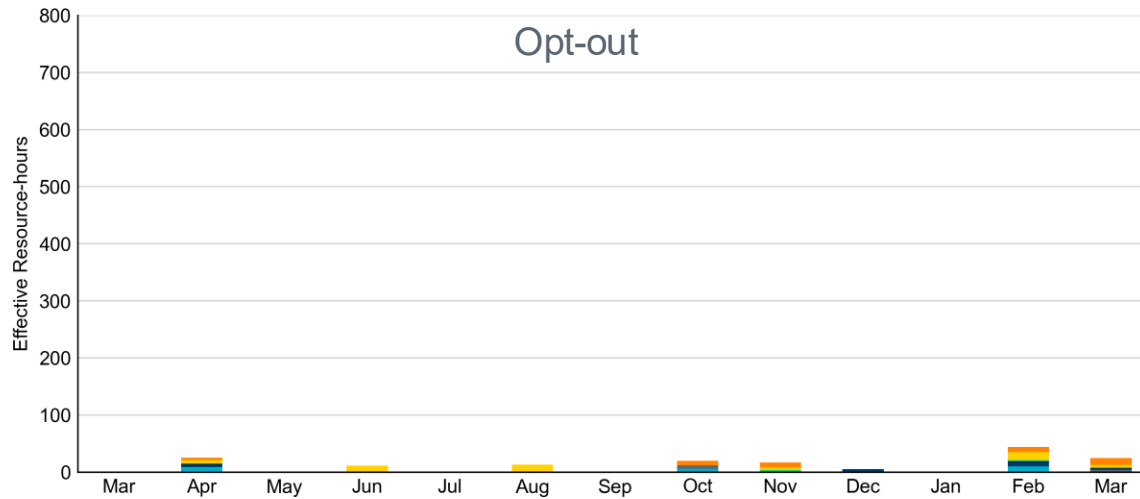
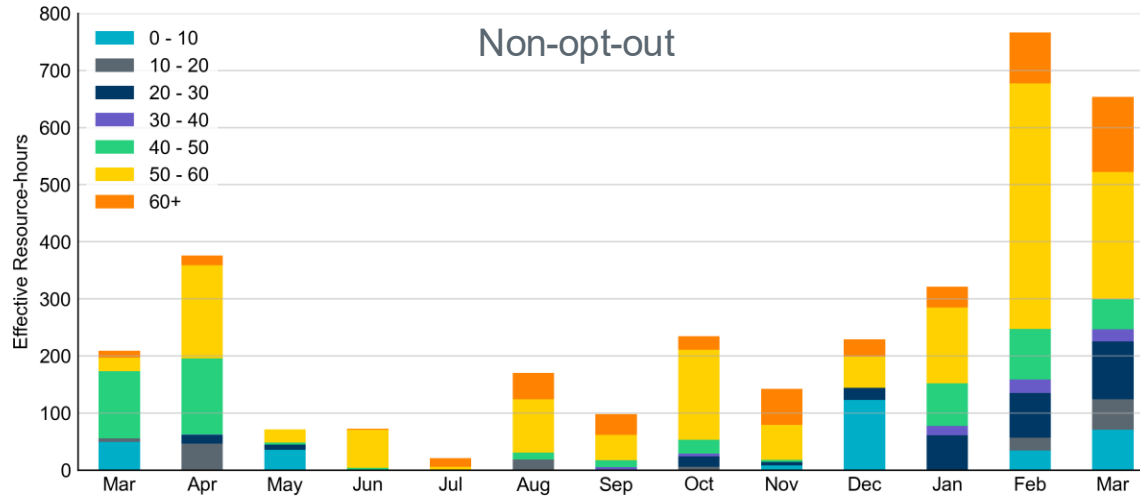
In March 2025, the average age of RUC-committed Resources was 42.7 years for Non-opt-out Resource-hours and 49.8 years for Opt-out Resource-hours with DAM Commitments.



Note: For Resource configurations with multiple physical generators, the age of the oldest generator is used.

# Age Category: Last 13 Months

In March 2025, most RUC Effective Resource-Hours (55%) were provided by resources that were more than 50 years old.



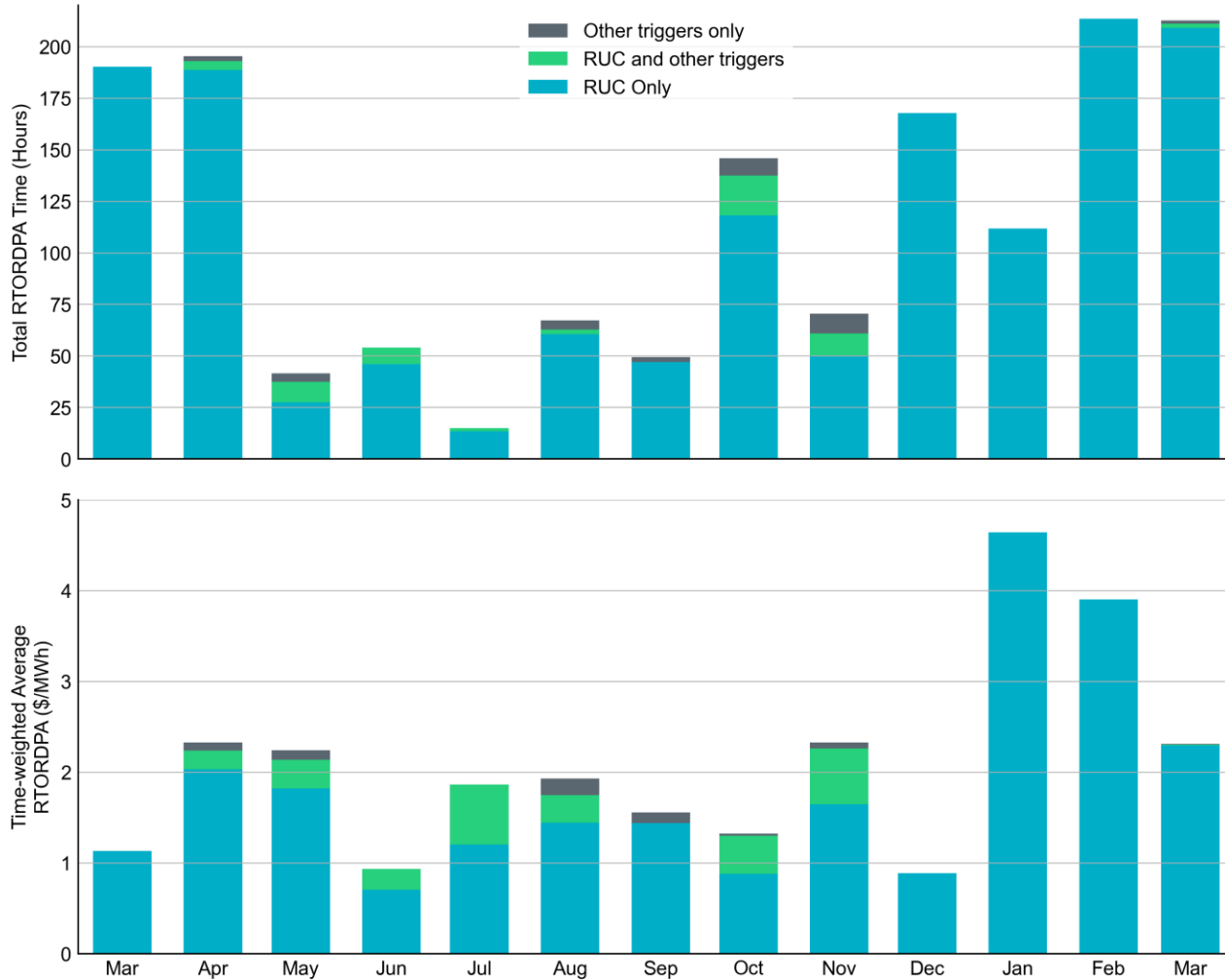
# RUC-Instructed Resource Dispatch above LDL

## March 2025

- There were 8.1 effective Resource-hours in which Resources that did not successfully opt out were dispatched above their LDL.
  - For 0.4 of these Resource-hours, the LMP for the RUC-instructed Resource was above the RUC offer floor.
  - For 7.7 of these Resource-hours, the LMP for the RUC-instructed Resource was below the RUC offer floor.
    - For all of these 7.7 Resource-hours, the RUC-instructed Resource was mitigated.
- There were no Exceptional Fuel Cost submissions for any RUC-committed Resources.

# Reliability Deployment Price Adder: Last 13 Months

March 2025 had a total of 219.7 RTORDPA hours with an average value of \$2.31/MWh.

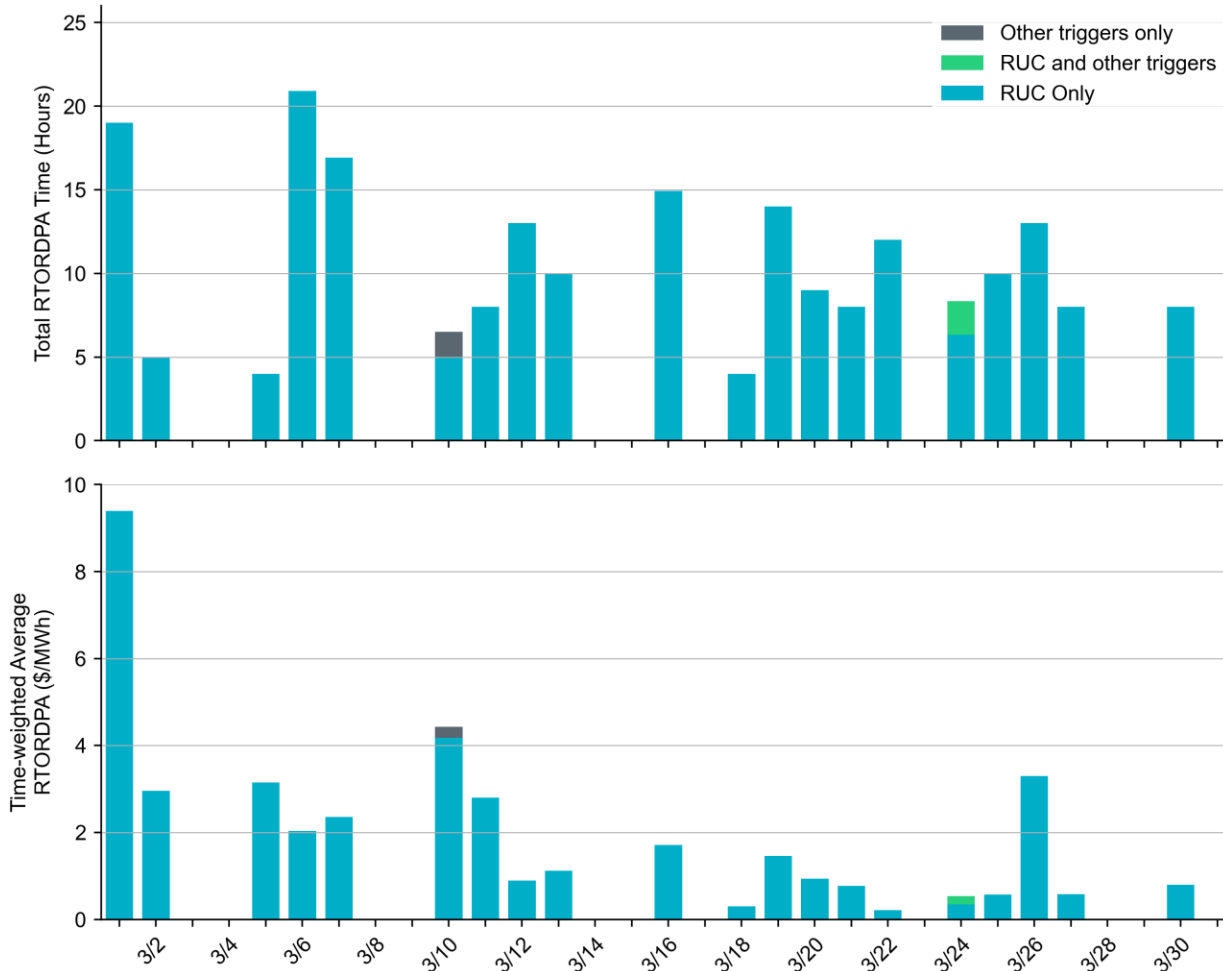


These graphs show RTORDPA instances by reliability action: 'RUC Only' for instances triggered solely by Reliability Unit Commitment, 'RUC and other triggers' for instances with RUC and additional triggers, and 'Other triggers only' for instances with non-RUC triggers. The daily average RTORDPA is calculated using the total duration across all categories. See ERCOT protocol section 6.5.7.3.1 for details.



# Reliability Deployment Price Adder: March 2025

OD 03/01 had the highest daily time-weighted average RTORDPA of \$9.40/MWh.

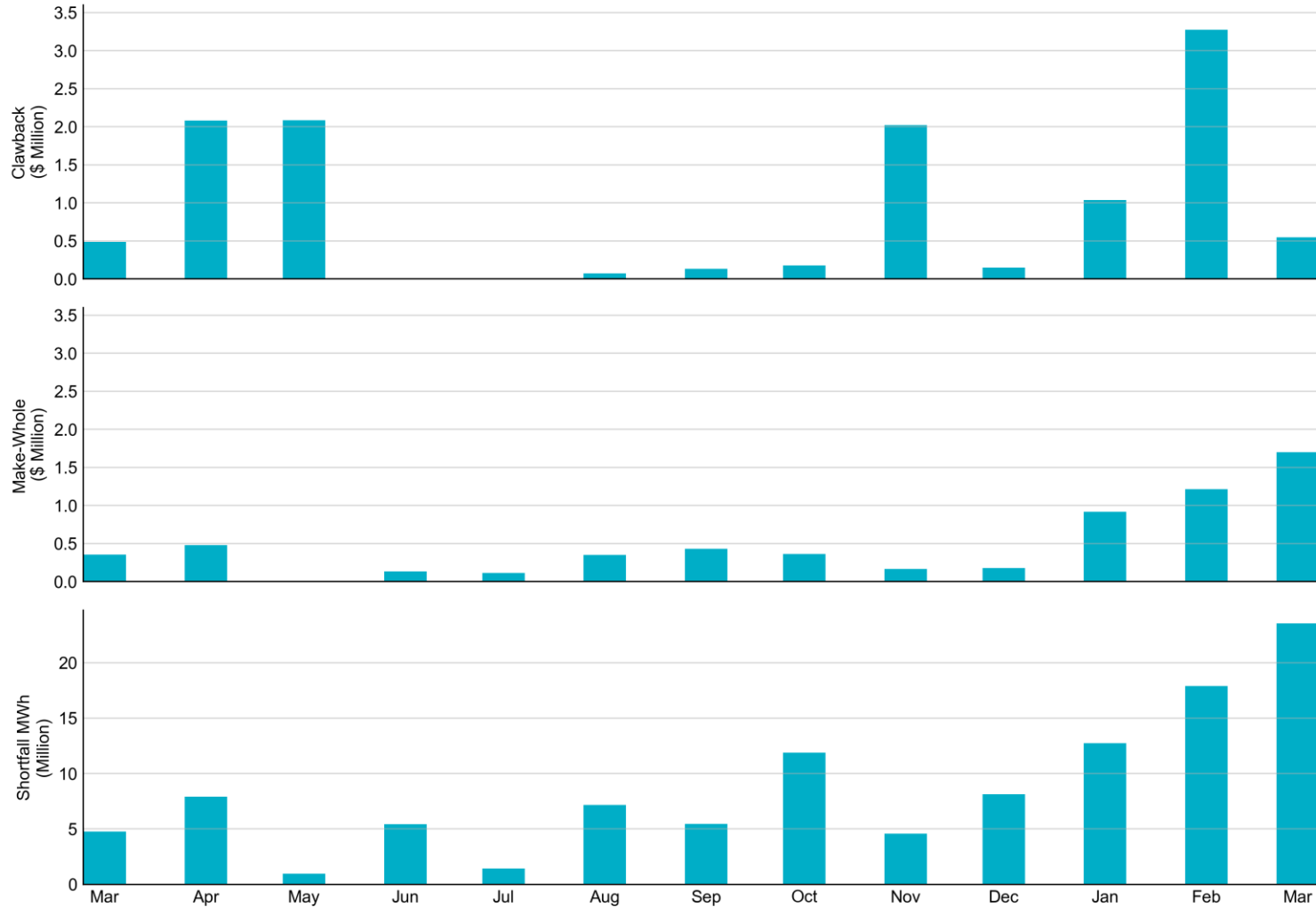


These graphs show RTORDPA instances by reliability action: 'RUC Only' for instances triggered solely by Reliability Unit Commitment, 'RUC and other triggers' for instances with RUC and additional triggers, and 'Other triggers only' for instances with non-RUC triggers. The daily average RTORDPA is calculated using the total duration across all categories. See ERCOT protocol section 6.5.7.3.1 for more details.



# RUC Clawback, Make-Whole, and Shortfall

For March 2025, the total Clawback Charge was \$545,642. The total Make-Whole Payment was \$1,701,707.



Of the \$1,701,707 in Make-Whole Payments made in March 2025, \$6.27 was uplifted to load due to rounding. The remaining amount was collected through Capacity-Short Charges.



# RUC Clawback by Settlement Type

Month	Initial Settlement (\$)	Final Settlement Change (\$)	True-up Settlement Change (\$)	Net as of April 8, 2025 (\$)
Mar '24	487,193	0	0	487,193
Apr '24	2,092,224	0	-11,818	2,080,406
May '24	2,084,416	0	0	2,084,416
Jun '24	58	0	0	58
Jul '24	47,627	0	-47,627	0
Aug '24	73,690	0	0	73,690
Sep '24	140,239	0	-7,864	132,375
Oct '24	179,331	0	0	179,331
Nov '24	2,022,874	0	-	-
Dec '24	147,389	-3	-	-
Jan '25	1,037,717	0	-	-
Feb '25	3,272,312	0	-	-
Mar '25	545,642	-	-	-

- Negative dollars represent a payment from ERCOT to a market participant
- “-” indicates settlement has yet to be completed.
- Net figures may differ slightly due to rounding.

# RUC Make-Whole by Settlement Type

Month	Initial Settlement (\$)	Final Settlement Change (\$)	True-up Settlement Change (\$)	Net as of April 8, 2025 (\$)
Mar '24	-353,562	0	0	-353,562
Apr '24	-443,178	0	-35,271	-478,449
May '24	-2,957	0	0	-2,957
Jun '24	-76,670	0	-57,341	-134,011
Jul '24	-4,297	0	-109,781	-114,078
Aug '24	-305,171	0	-46,445	-351,616
Sep '24	-239,681	0	-192,317	-431,998
Oct '24	-364,395	0	-26,567	-390,962
Nov '24	-164,191	0	-	-
Dec '24	-179,587	0	-	-
Jan '25	-834,867	-26,923	-	-
Feb '25	-1,198,579	0	-	-
Mar '25	-1,701,707	-	-	-

- Negative dollars represent a payment from ERCOT to a market participant
- “-” indicates settlement has yet to be completed.
- Net figures may differ slightly due to rounding.