



## **ERCOT Weatherization Update**

David Kezell  
Director, Weatherization and Inspection

April 17, 2025

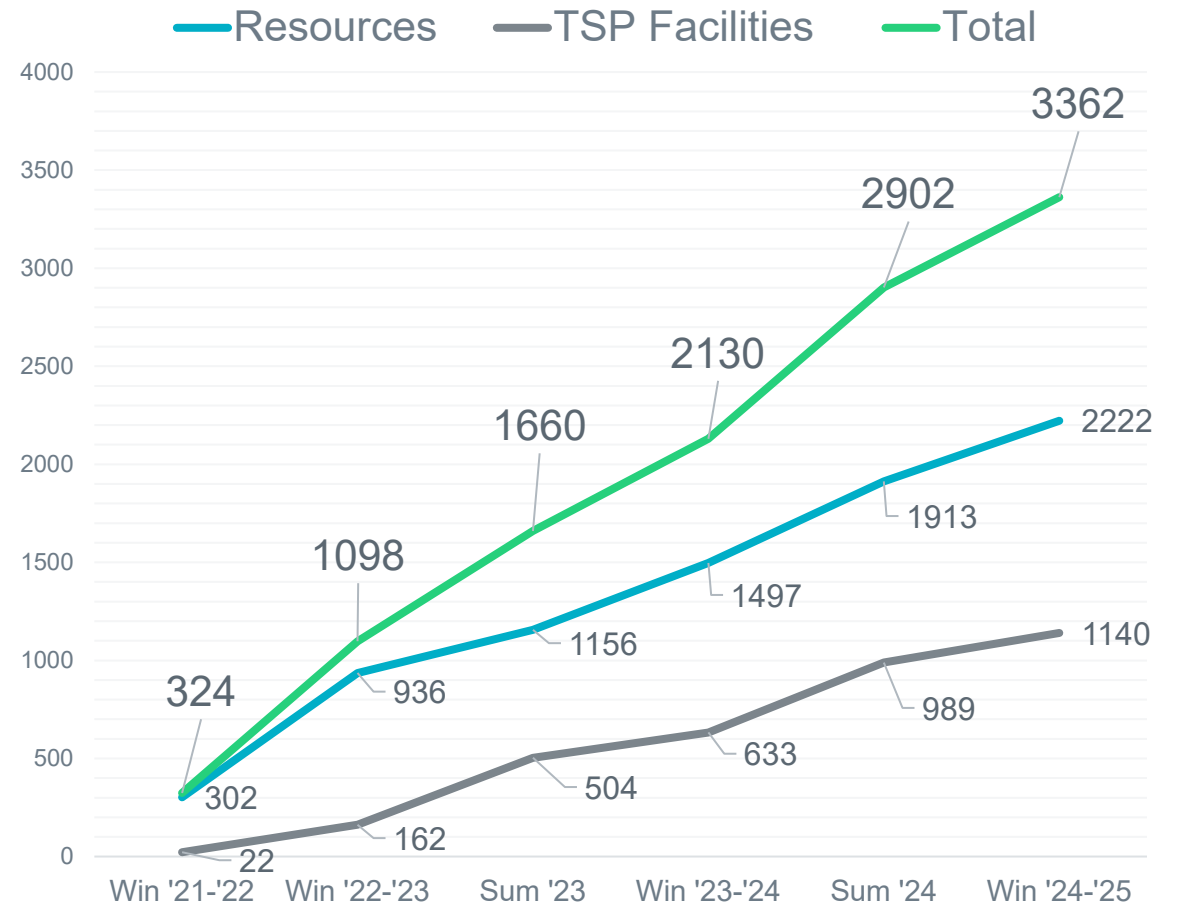
## Some High Points

- Market Participants in ERCOT have now been through four winters and two summers with the Weather Emergency Preparedness rule in place.
- Your efforts are having a beneficial impact on system reliability, particularly at times of extreme weather and peak demand.
- Preparation and compliance levels are high but there is room for improvement in reducing compliance deficiencies and untimely outages.
- We evaluate individual facility outages during peak demand periods and will follow-up to assure that facilities have implemented weather emergency preparation measures that can reasonably be expected to ensure sustained operation at the required hot and cold conditions.

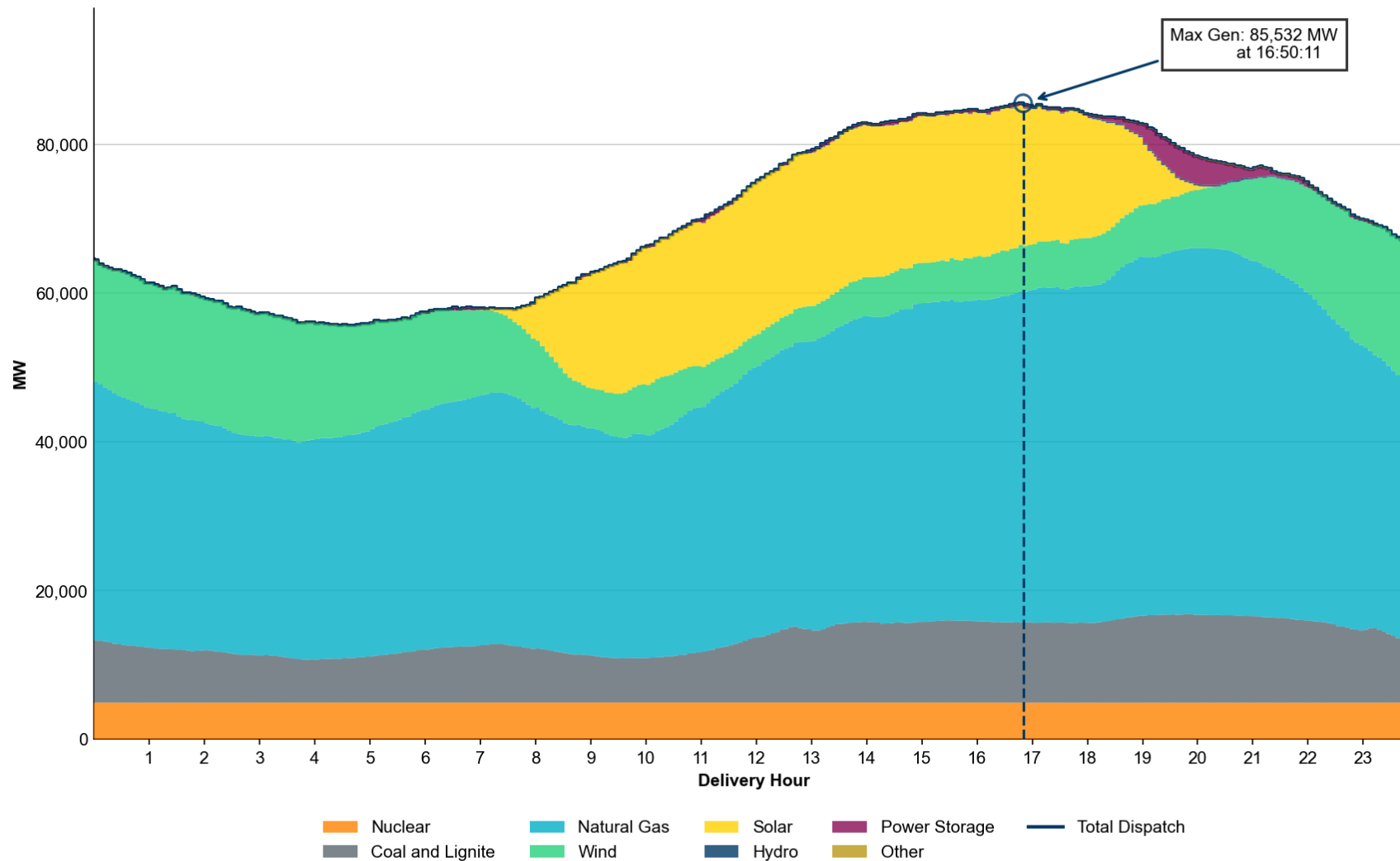
## Weatherization Inspections to Date

- Over the course of four winter seasons and two summer seasons, ERCOT has completed 3,362 weatherization inspections.
- The weatherization program has had a significant positive impact on the reliability of the bulk electric system during significant winter weather events.

Cumulative Inspection Totals by Season



# Criticality of Our Collective Efforts during Summer



Evening ramp down of solar generally results in lower reserves and higher contributions from storage resources

Generation mix at peak:  
52.1% gas  
21.9% solar  
12.6% coal  
7.3% wind  
5.7% nuclear  
0.2% storage  
0.1% hydro  
0.1% other

# Criticality of Our Collective Efforts during Winter

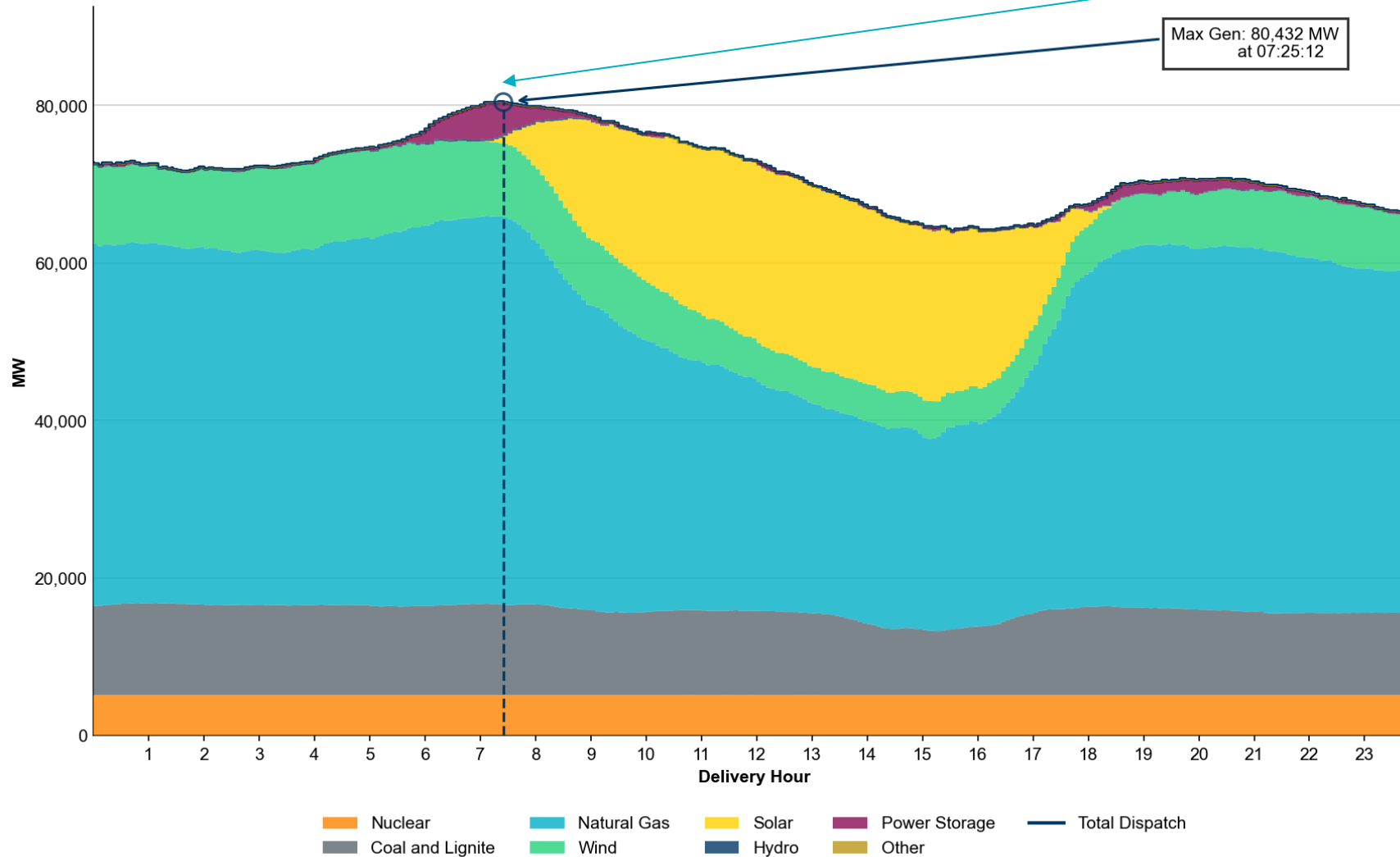
New Winter Peak  
On 2/20/2025

Generation mix at  
80.4 GW 2025 peak:

- 61.2% gas
- 14.3% coal
- 11.6% wind
- 6.4% nuclear
- 5.3% storage
- 0.8% solar
- 0.3% hydro
- 0.1% other

80.4 GW - 2025  
78.1 GW - 2024  
74.5 GW - 2022

Winter Peak has  
increased 7.9% in 3  
years



## Some Critical Compliance Items

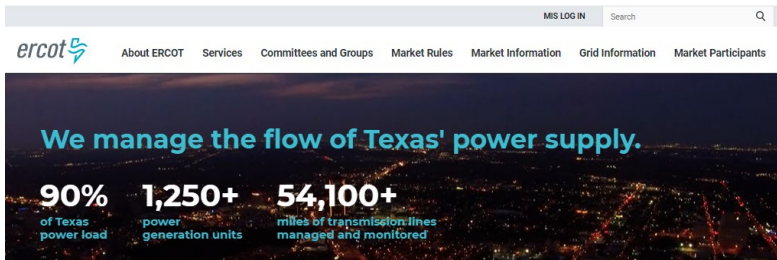
- Timely communication to ERCOT of contact information for Authorized Representative and Backup Authorized Representatives (AR/BAR) is required and critical.
- Acknowledgments of Notices of Inspection are required within 24 hours of issuance. ERCOT has implemented proactive reminders at 22 hours and at 48 hours overdue. Failures to comply may result in enforcement action.
- For cybersecurity reasons, MP access to the portal is unavailable from outside the U.S. Please designate U.S.-based personnel that will always be able to act on behalf of your company.
- Awareness of and compliance with PUC rule provisions are expected and mandatory. 16 TAC §25.55 – Weather Emergency Preparedness can be found at [Weather Emergency Preparedness Rule](#)

## Going Forward



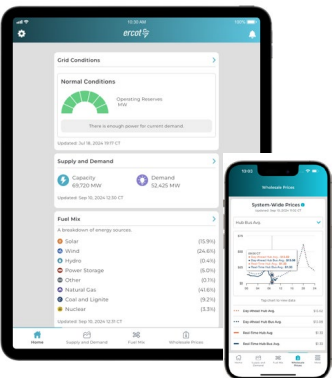
- The ERCOT Weatherization & Inspection Market Participant Portal will have been up and running for 1 year on May 1, 2025. The [User Guide](#) has been updated and is great resource for most informational needs.
- The portal will open on May 1, 2025 for submission of Declarations of Weather Preparedness which are due no later than June 2, 2025 (June 1<sup>st</sup> is a Sunday).
- ERCOT demand levels continue to grow at historically high levels - the reliability of all components of the system has never been more critical to uninterrupted delivery of electrical energy services.
- ERCOT Summer Weatherization Website - [Summer Weather Readiness](#)
- ERCOT Winter Weatherization Website - [Winter Weather Readiness](#)

# ERCOT Communication Channels



## ERCOT website [www.ercot.com](http://www.ercot.com)

- Today's outlook and grid conditions
- Daily and seasonal weather
- Market information, prices and more



## New ERCOT mobile app

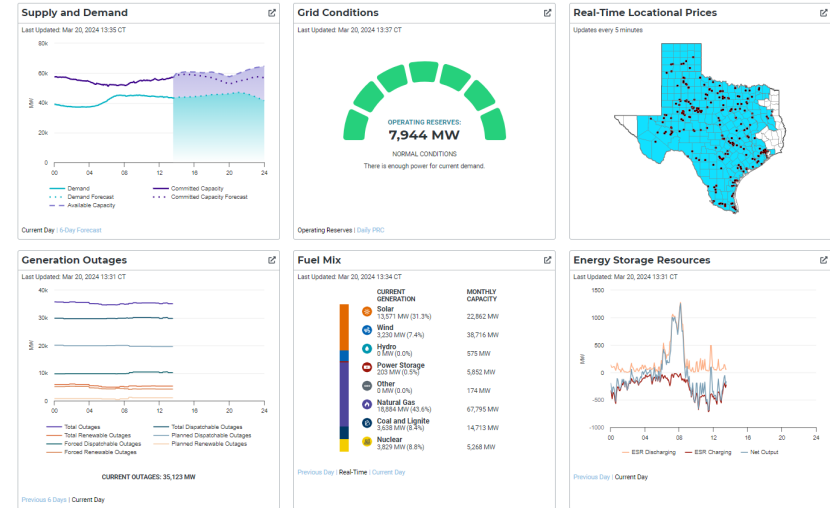
- Real-time updates
- Wholesale pricing
- Information sharing



## Grid and Market Conditions

These dashboards offer a snapshot of current conditions in the ERCOT system. The timestamp on each indicates when the information was last updated. Click the Full View link on a dashboard for an expanded display.  
 \*Note: The 6-Day Forecast graph should only be used as a relative indication of future system conditions. Due to uncertainties associated with the longer-term nature of the forecasts used, both the Available Seasonal Capacity and Demand Forecast may adjust significantly as the Operating Day approaches.

\*Note: Capacity available from demand response programs is not reflected in the Current Day and the 6-Day Forecast graphs unless these programs have been deployed.



- Early notifications ahead of periods of higher demand
- Provides greater transparency on grid operations
- Subscribe for email notifications

Join us on social media!

