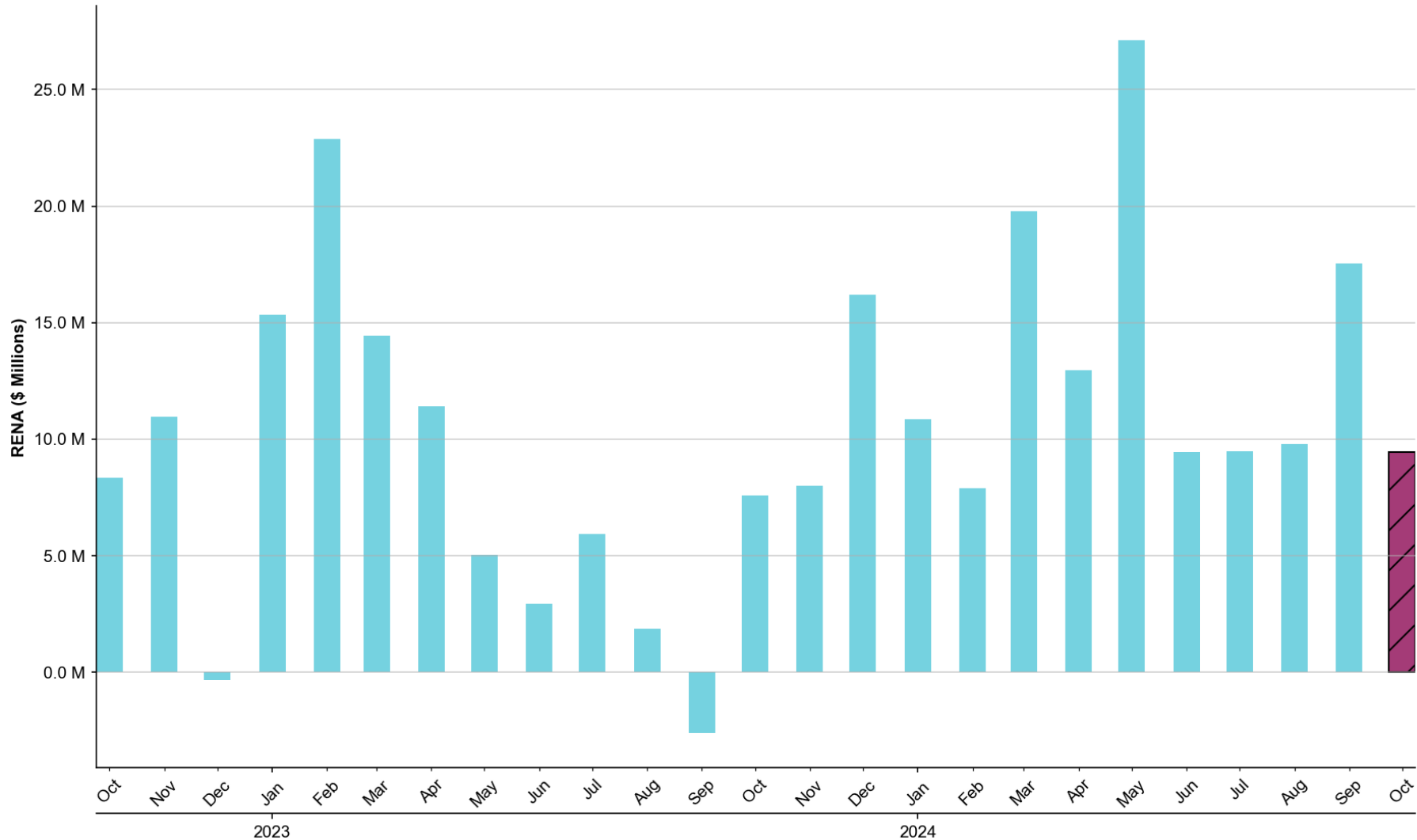


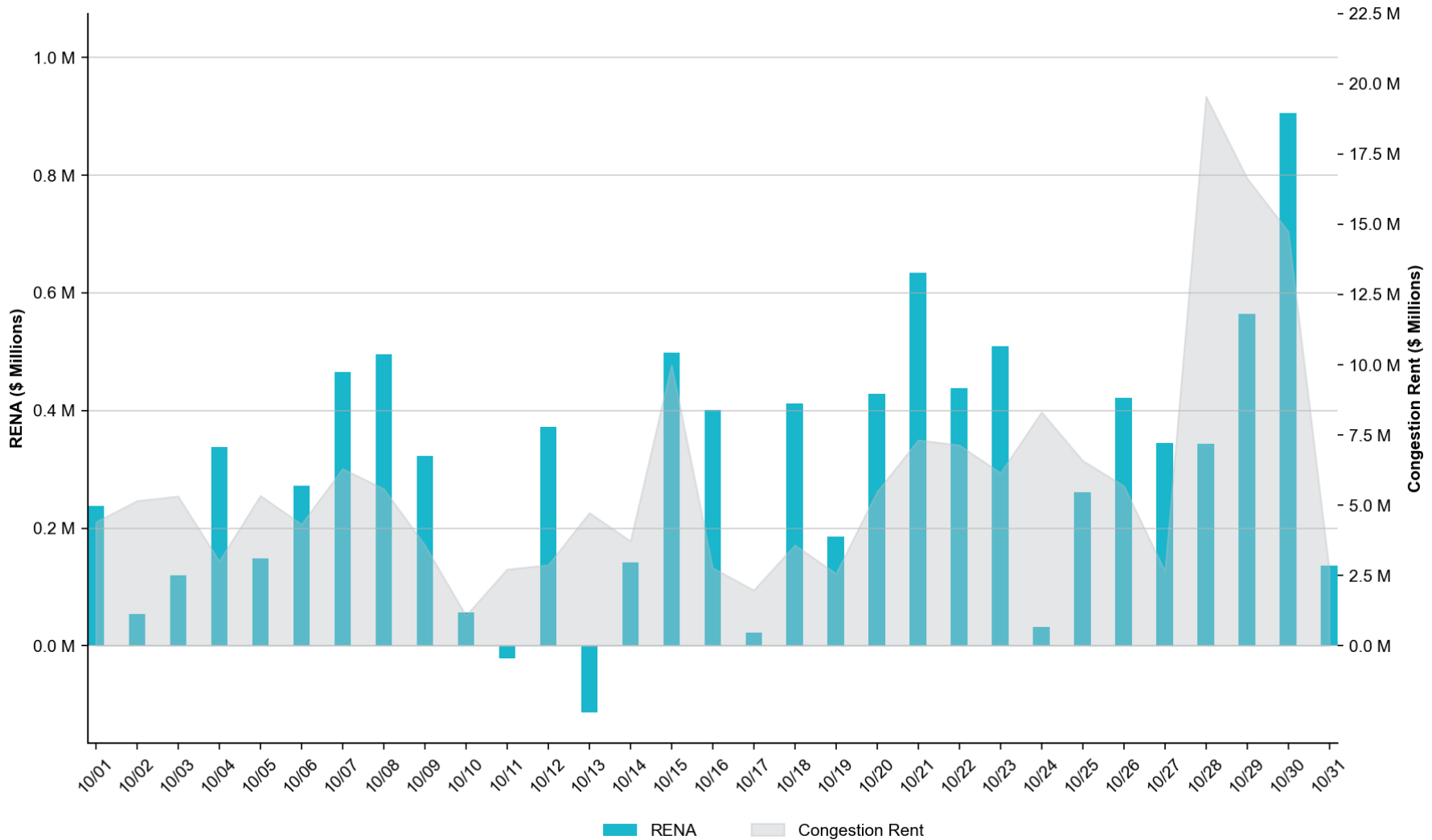
Historical Monthly RENA Totals

The total RENA in October of **\$9.43M** represents the **44th** percentile compared to the monthly RENA totals across the previous two years.



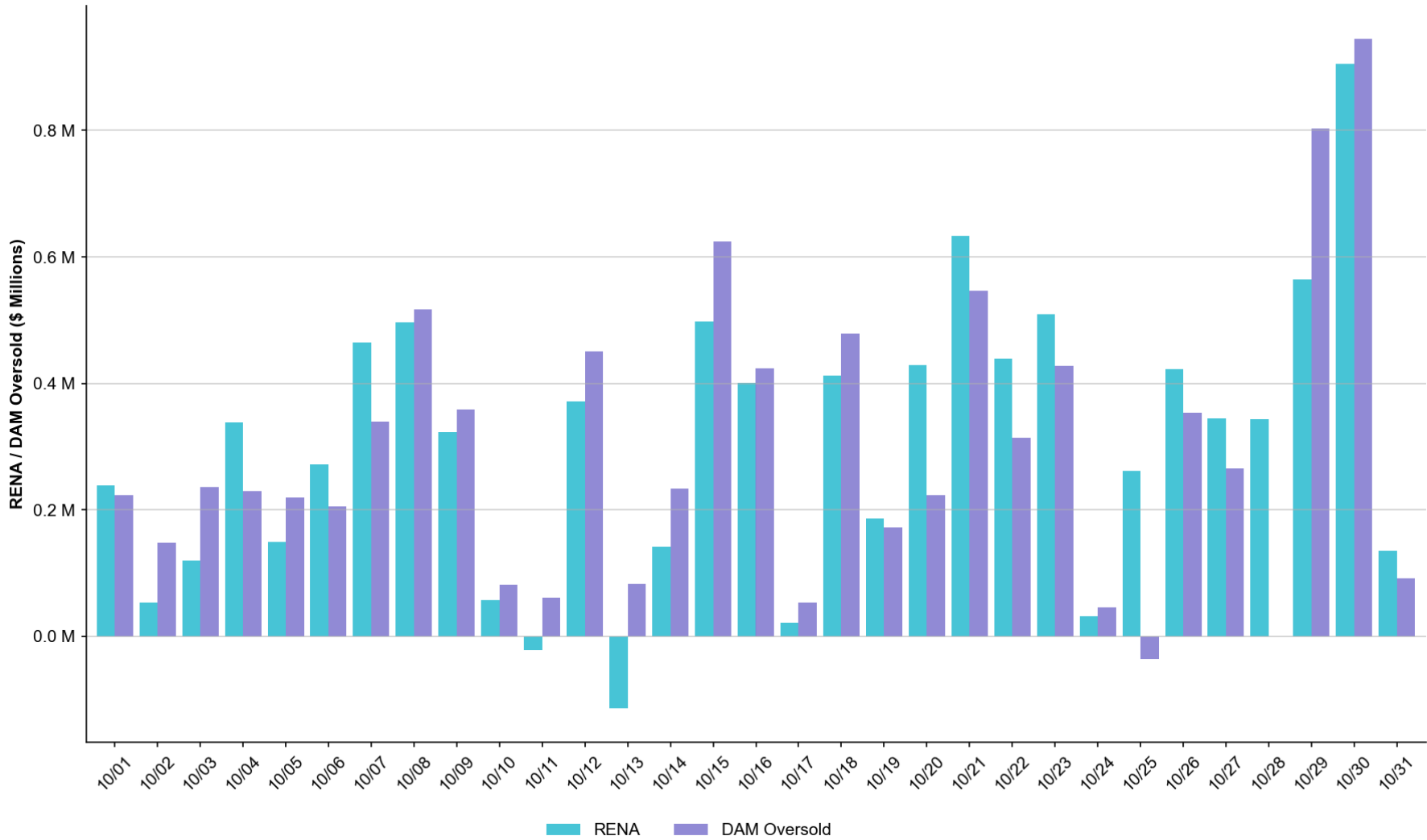
Daily RENA vs. Real-Time Congestion Rent

The total RENA in October was approximately **\$9.43M**, while the total Real-Time congestion rent accrued amounted to **\$182.11M**.



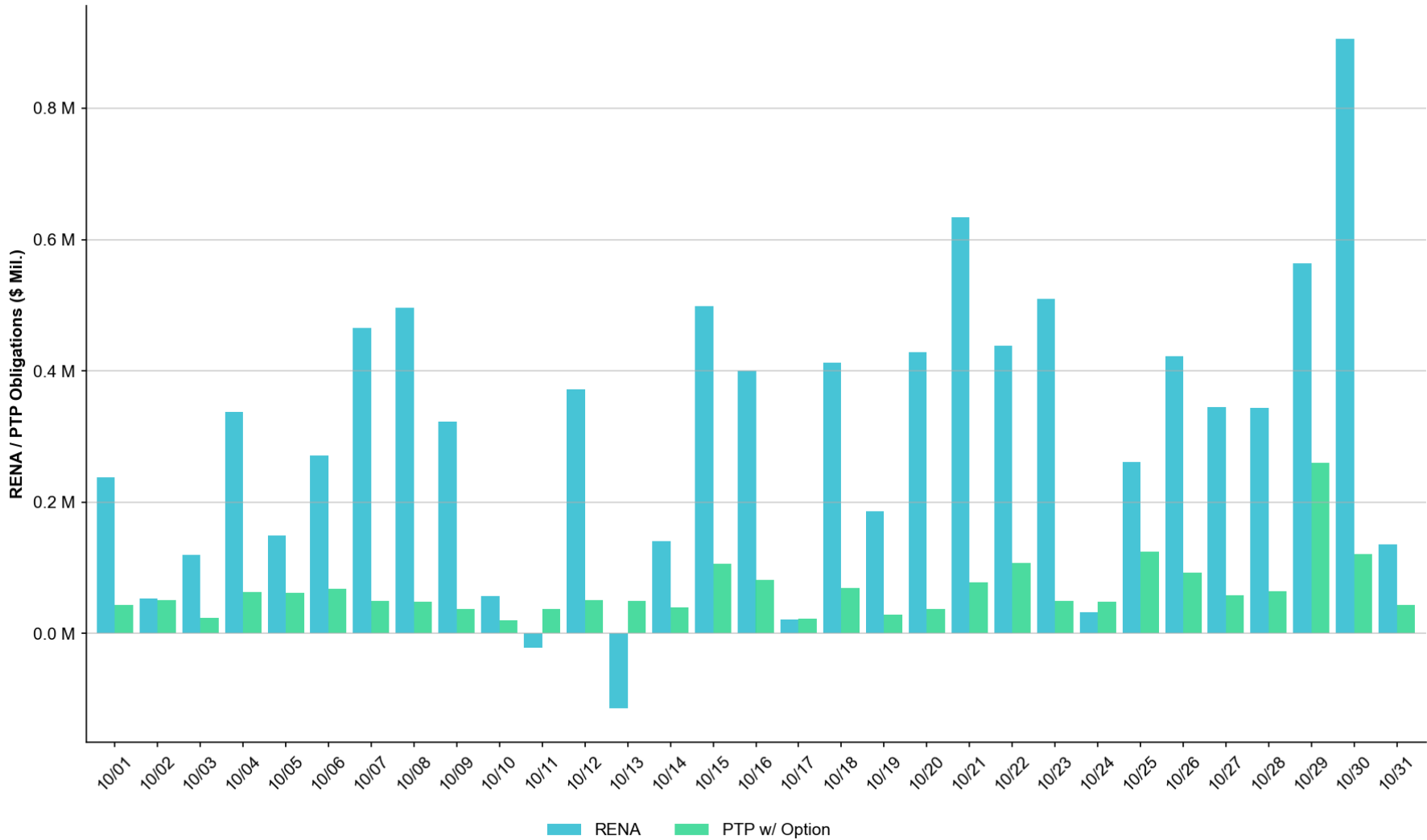
Daily RENA vs. estimated DAM Oversold

The total estimated DAM oversold in October was approximately **\$9.12M**.



Daily RENA vs. PTP w/ Links to Options

The estimated sum of PTPs w/ Links to Options in October totaled **\$2.04M**.



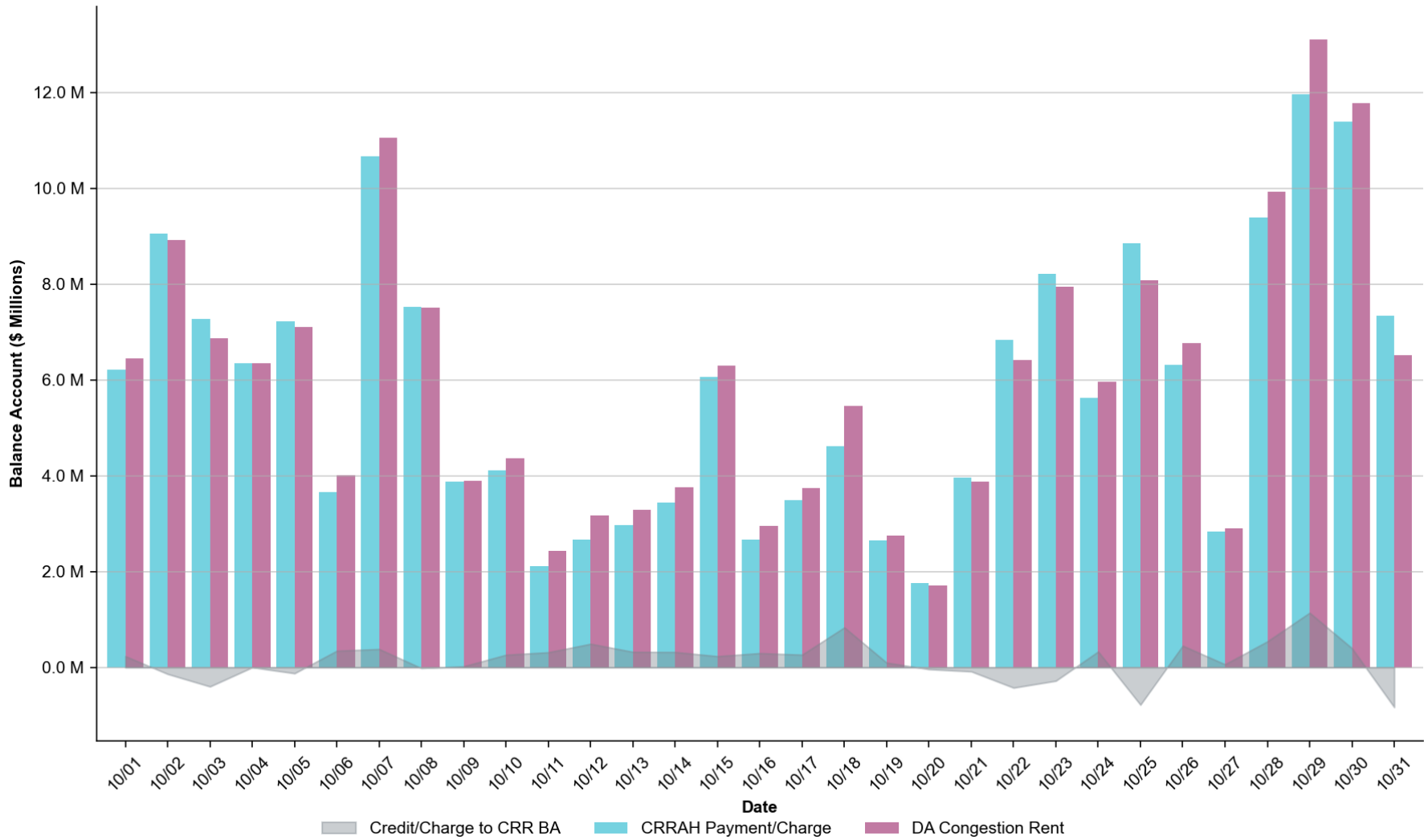
Operating Days with RENA exceeding \$1 Million

- There was not an Operating Day with RENA exceeding \$1M.

Summary

- The monthly RENA observed in October totaled **\$9.43M**, which can be considered moderate based on the monthly totals observed across the previous two years.
- The highest RENA observed in October was on OD **10/30** with **\$0.91M**, which was mostly related to DAM Oversold on an RTM Constraint.
- PTP w/ links to options in October totaled **\$2.04M**, which is slightly less than in previous months. The highest daily contribution of **\$0.26M** was observed on OD **10/29**.
- The remainder of RENA was related to disparities in the Congestion Rent collected in SCED and Settlement.

Monthly CRR Balance Account



Abbreviations

CRR	Congestion Revenue Rights
CRRAH	Congestion Revenue Rights' Account Holders
CRRBA	Congestion Revenue Rights' Balance Account
OD	Operating Day
PTP	Point-to-Point
RENA	Revenue Neutrality Allocation Uplift