

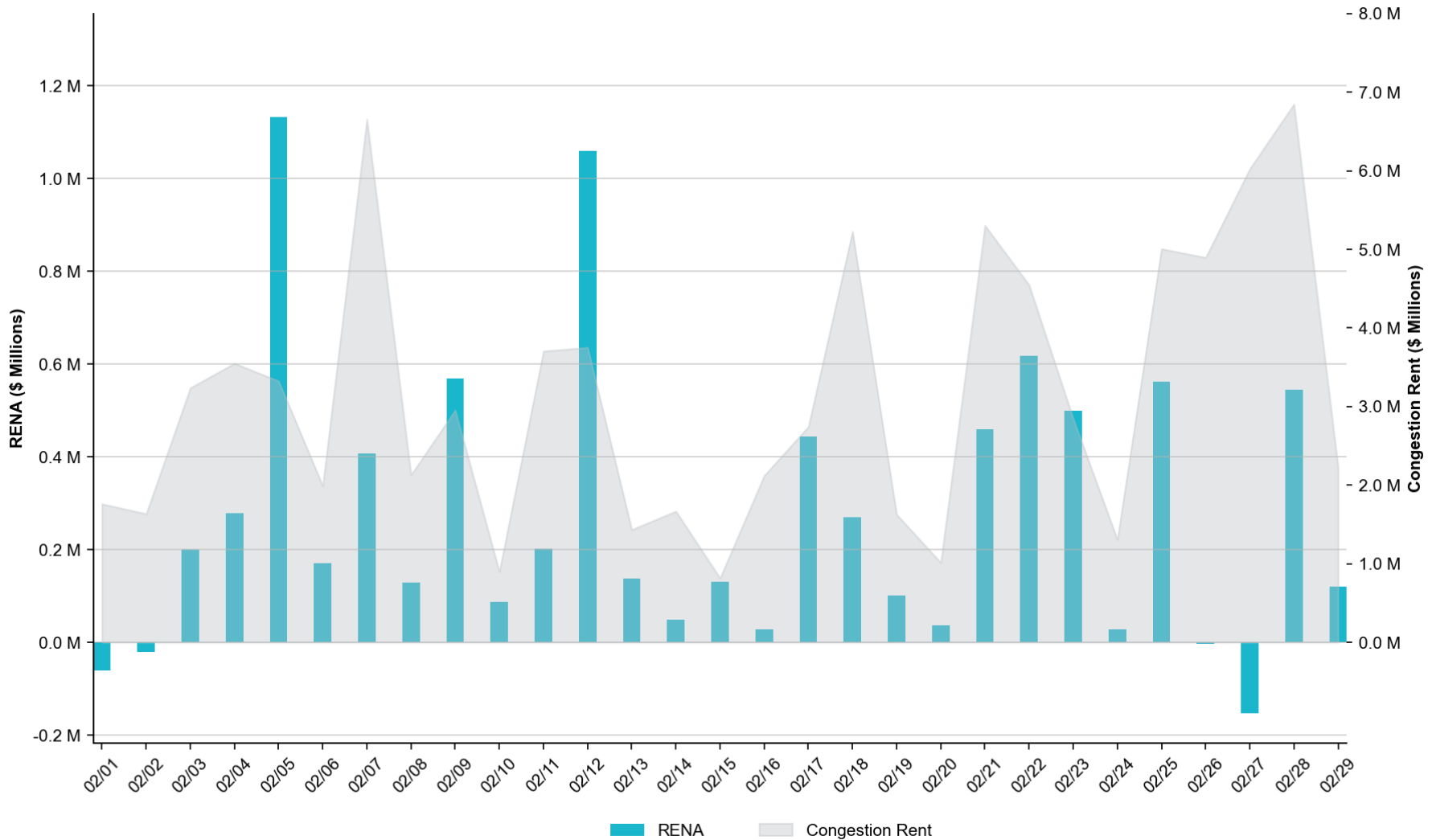
Historical Monthly RENA Totals

The total RENA in February of **\$8.03M** represents the **64th** percentile compared to the monthly RENA totals across the previous two years.



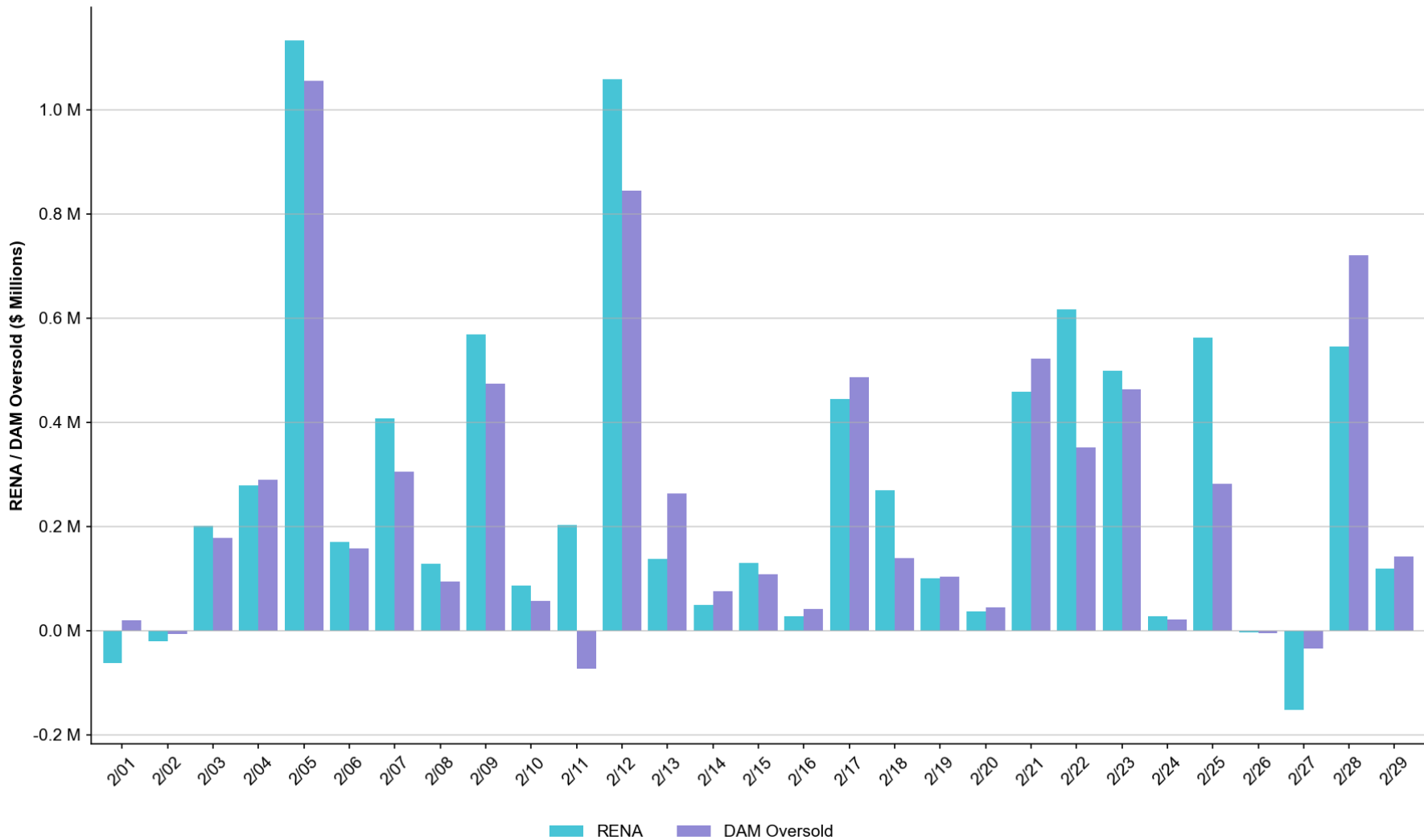
Daily RENA vs. Real-Time Congestion Rent

The total RENA in February was approximately **\$8.03M**, while the total Real-Time congestion rent accrued amounted to **\$91.27M**.



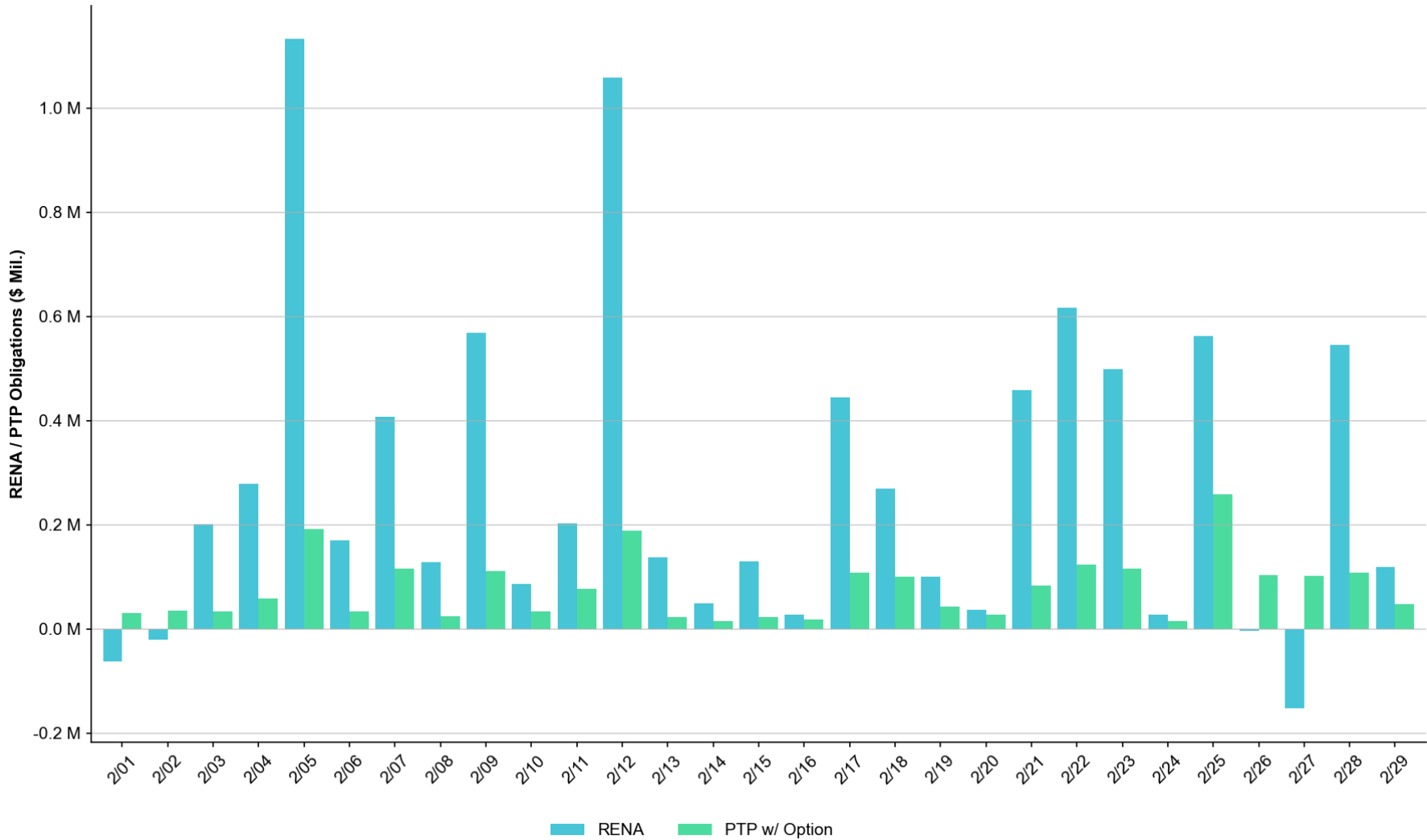
Daily RENA vs. estimated DAM Oversold

The total estimated DAM oversold in February was approximately **\$7.12M**.



Daily RENA vs. PTP w/ Links to Options

The estimated sum of PTPs w/ Links to Options in February totaled **\$2.26M**.



Operating Days with RENA exceeding \$1 million

| OPERATING DAY | RENA | RT CONGESTION RENT | DAM OVERSOLD | PTP W/ OPTION |
|---------------|---------|--------------------|--------------|---------------|
| February-05 | \$1.13M | \$3.33M | \$1.06M | \$0.19M |

NOTES:

- DAM Oversold on an RTM constraint: The constraint SBAKCED5: HARGRO_TWINBU1_1 contributed ca. \$0.3M in RENA, primarily attributable to a modelling discrepancy related to the outage status of nearby 69kV transmission lines between RTM and DAM.
- DAM Oversold on an RTM constraint: The constraint SSPUASP8: GIRA_T_SPUR1_1 contributed ca. \$0.2M toward RENA, primarily attributable to a modelling discrepancy related to the outage status of a nearby 138kV transmission line between RTM and DAM.

| OPERATING DAY | RENA | RT CONGESTION RENT | DAM OVERSOLD | PTP W/ OPTION |
|---------------|---------|--------------------|--------------|---------------|
| February-12 | \$1.06M | \$3.75M | \$0.84M | \$0.19M |

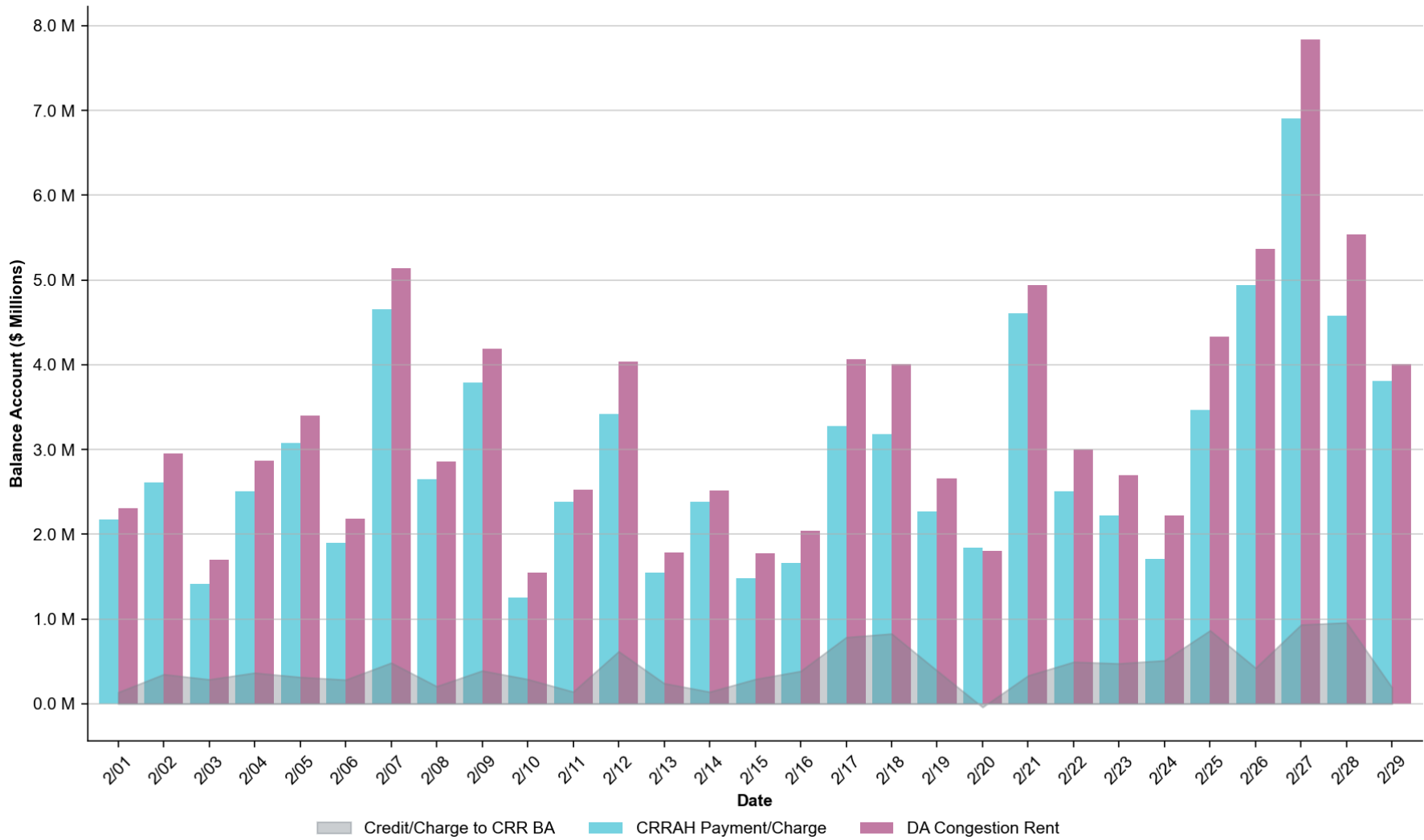
NOTES:

- DAM Oversold on an RTM constraint: The constraint SBAKCED5: HARGRO_TWINBU1_1 contributed ca. \$0.6M in RENA, primarily attributable to a modelling discrepancy related to the outage status of nearby 69kV transmission lines between RTM and DAM.
- DAM Oversold on an RTM constraint: The constraint SREVDIL8: CATARI_PILONC1_1 contributed ca. \$0.2M in RENA, primarily attributable to a PST tap difference between RTM and DAM.

Summary

- The monthly RENA observed in February totaled **\$8.03M**, which was moderately high based on the monthly RENA totals across the last two years.
- The highest RENA observed in February was on OD **02/05** with **\$1.13M**, which was primarily related to DAM Oversold on RTM constraints due to discrepancies in the outage status of transmission lines between DAM and RTM.
- PTP w/ links to options in February totaled **\$2.26M**, which was slightly higher than in previous months. OD **02/25** incurred the highest sum with **\$0.26M**.

Monthly CRR Balance Account



Abbreviations

| | |
|--------------|--|
| CRR | Congestion Revenue Rights |
| CRRAH | Congestion Revenue Rights' Account Holders |
| CRRBA | Congestion Revenue Rights' Balance Account |
| OD | Operating Day |
| PST | Phase Shifting Transformer |
| PTP | Point-to-Point |
| RENA | Revenue Neutrality Allocation Uplift |