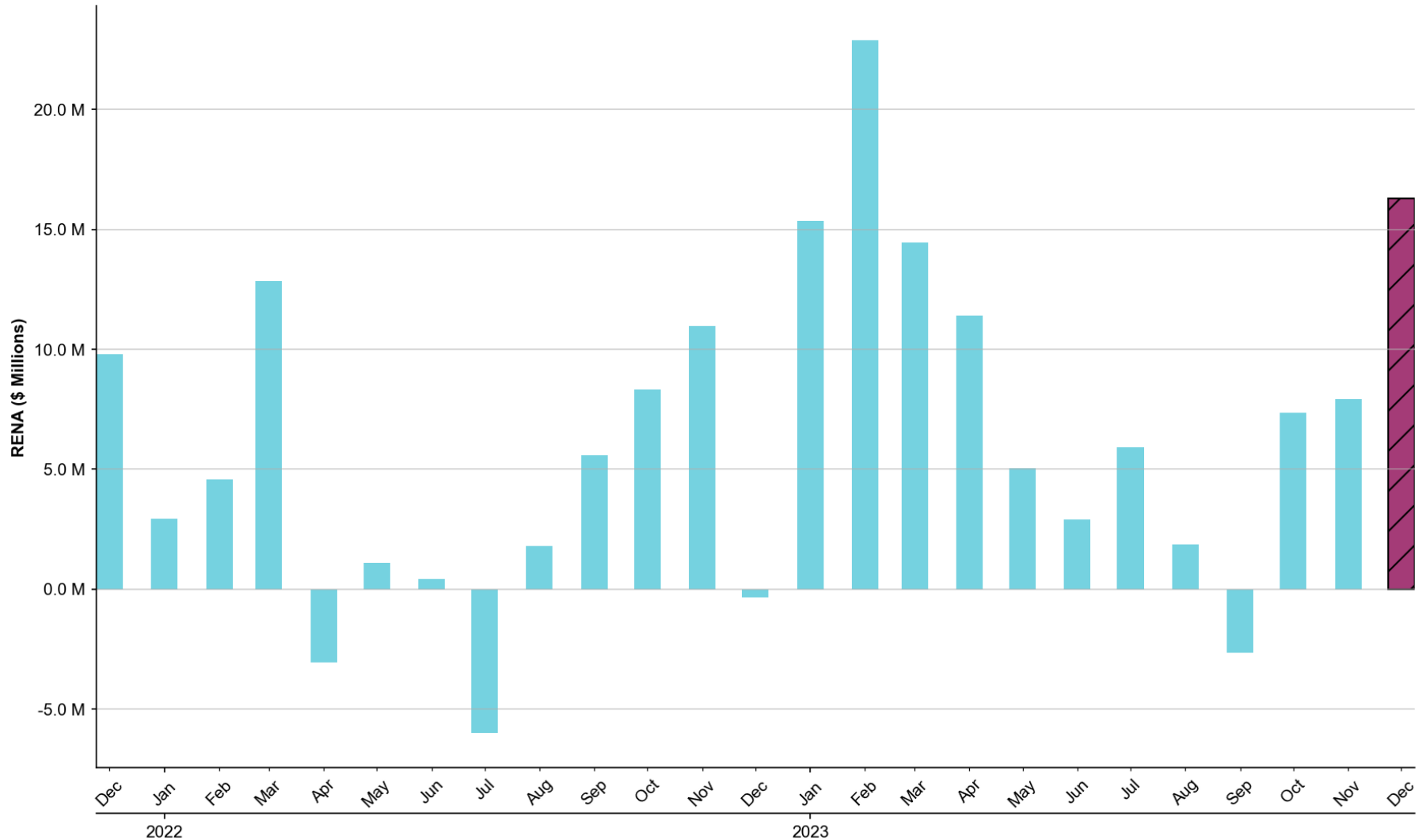


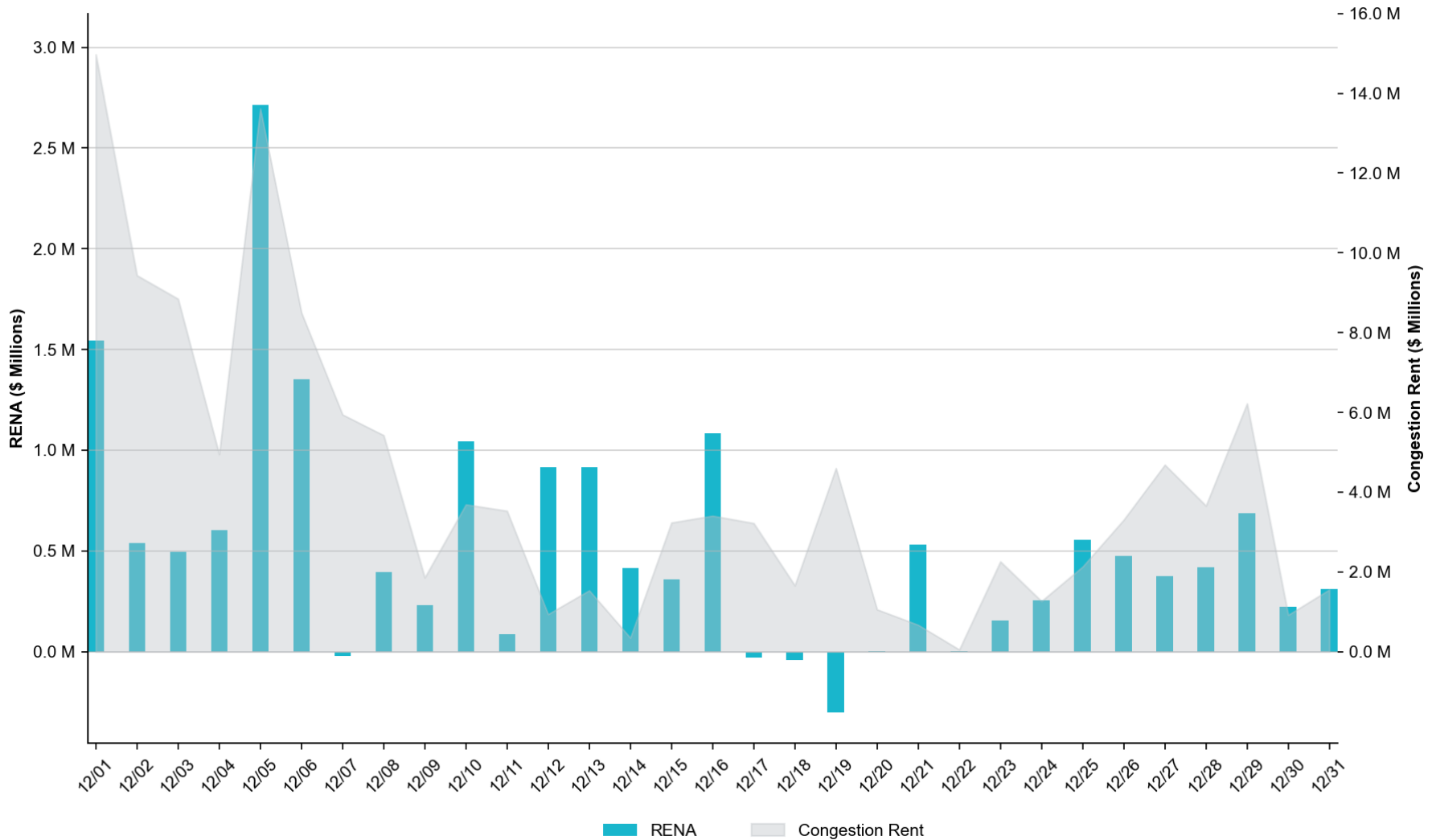
Historical Monthly RENA Totals

The total RENA in December of **\$16.29M** represents the **96th** percentile compared to the monthly RENA totals across the previous two years.



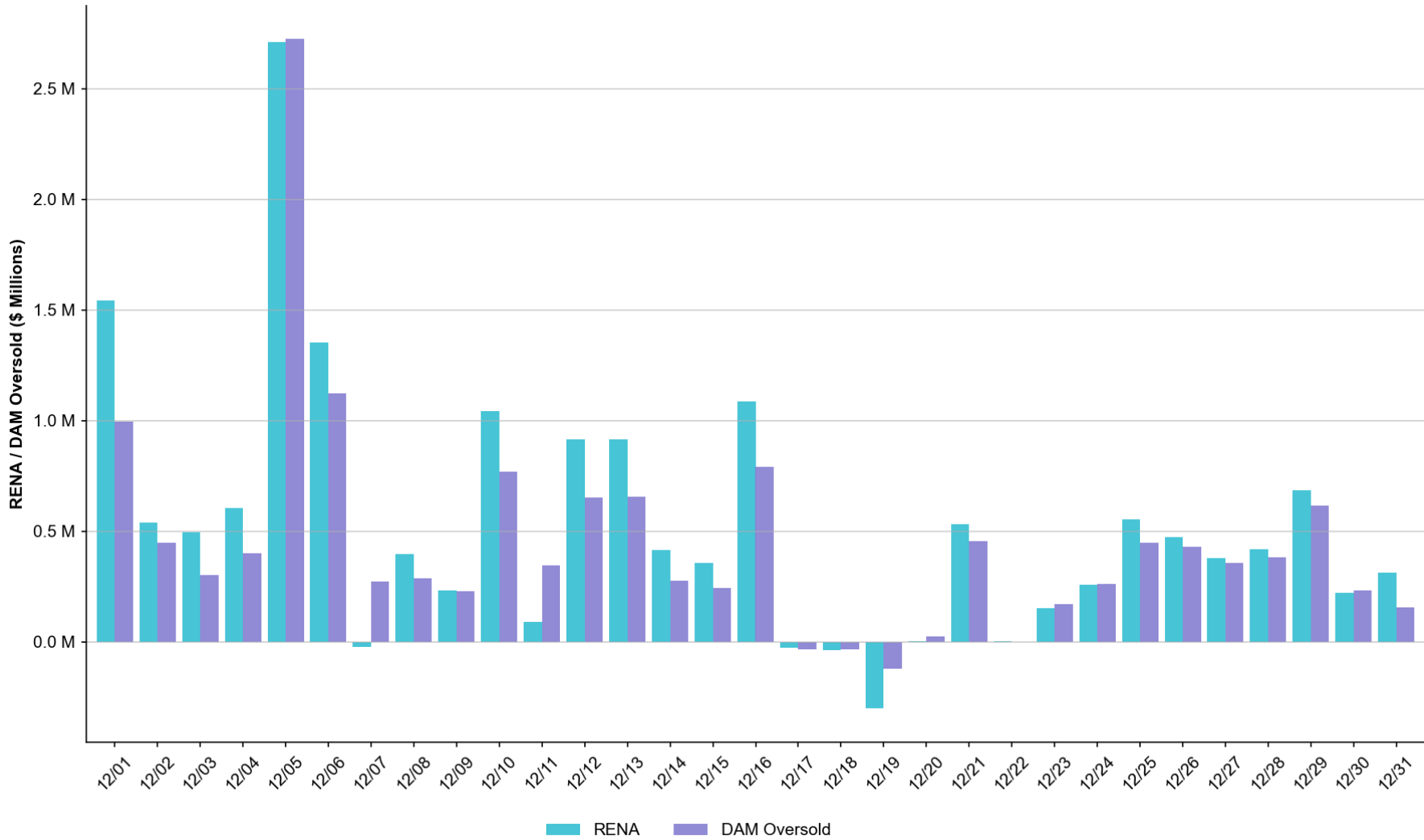
Daily RENA vs. Real-Time Congestion Rent

The total RENA in December was approximately **\$16.29M**, while the total Real-Time congestion rent accrued amounted to **\$127.52M**.



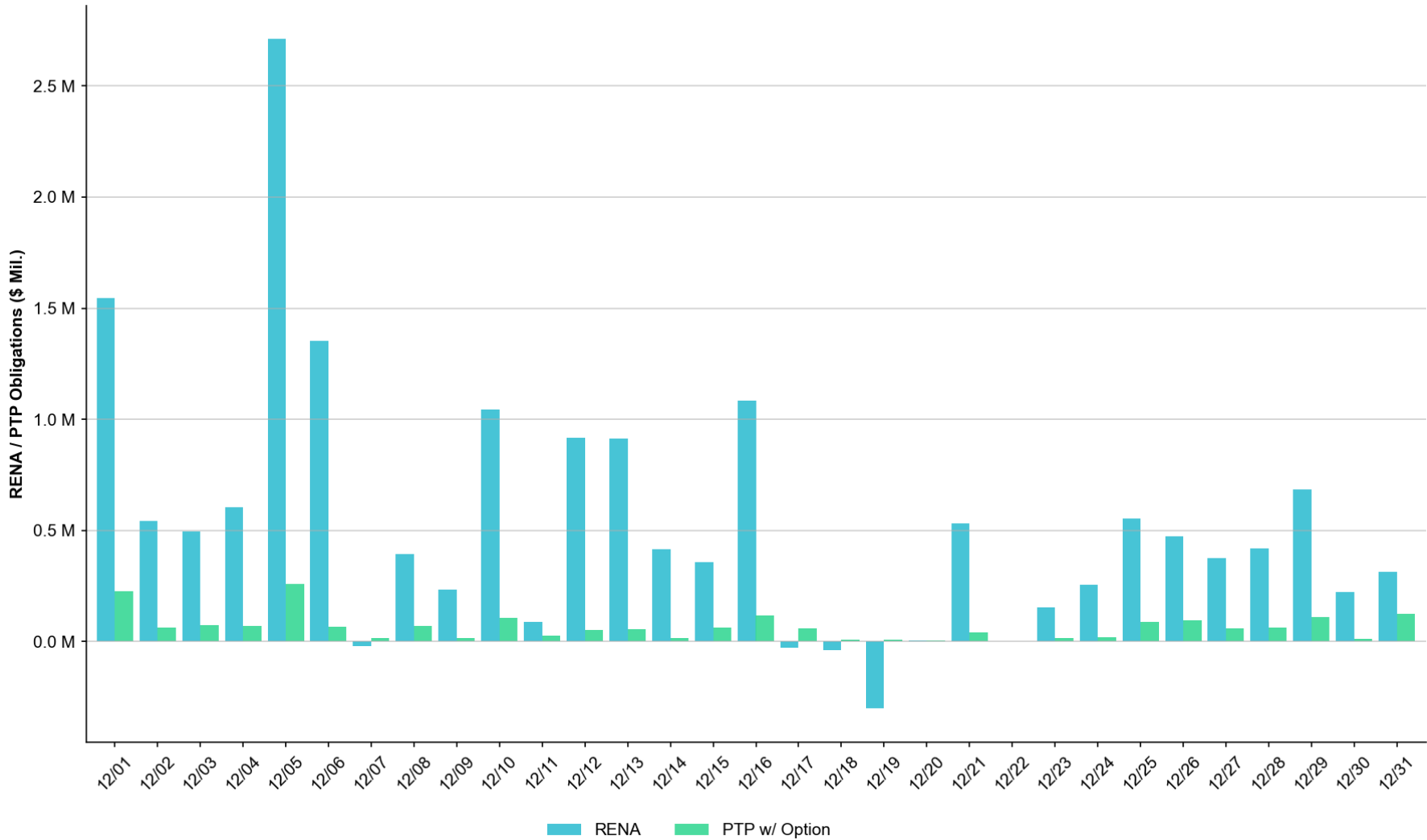
Daily RENA vs. estimated DAM Oversold

The total estimated DAM oversold in December was approximately **\$13.86M**.



Daily RENA vs. PTP w/ Links to Options

The estimated sum of PTPs w/ Links to Options in December totaled **\$2.00M**.



Top 3 Operating Days with RENA exceeding \$1 million

OPERATING DAY	RENA	RT CONGESTION RENT	DAM OVERSOLD	PTP W/ OPTION
December-01	\$1.54M	\$14.98M	\$0.99M	\$0.22M

NOTES:

- DAM Oversold on an RTM constraint: The constraint DCONLNG5: HARGRO_TWINBU1_1 contributed ca. \$0.63M in RENA attributable to a modelling discrepancy related to the outage status of a nearby 69kV transmission line between RTM and DAM.

OPERATING DAY	RENA	RT CONGESTION RENT	DAM OVERSOLD	PTP W/ OPTION
December-05	\$2.71M	\$13.62M	\$2.73M	\$0.26M

NOTES:

- DAM Oversold on an RTM constraint: The constraint DCONLNG5: HARGRO_TWINBU1_1 contributed ca. \$1.1M toward RENA, attributable to a modelling discrepancy related to the outage status of a nearby 69kV transmission line.
- DAM Oversold on an RTM constraint: The EASTEX GTC contributed ca. \$1.2M toward RENA, primarily attributable to a difference in the constraint limit modelled in RTM and DAM.

OPERATING DAY	RENA	RT CONGESTION RENT	DAM OVERSOLD	PTP W/ OPTION
December-06	\$1.35M	\$8.50M	\$1.12M	\$0.07M

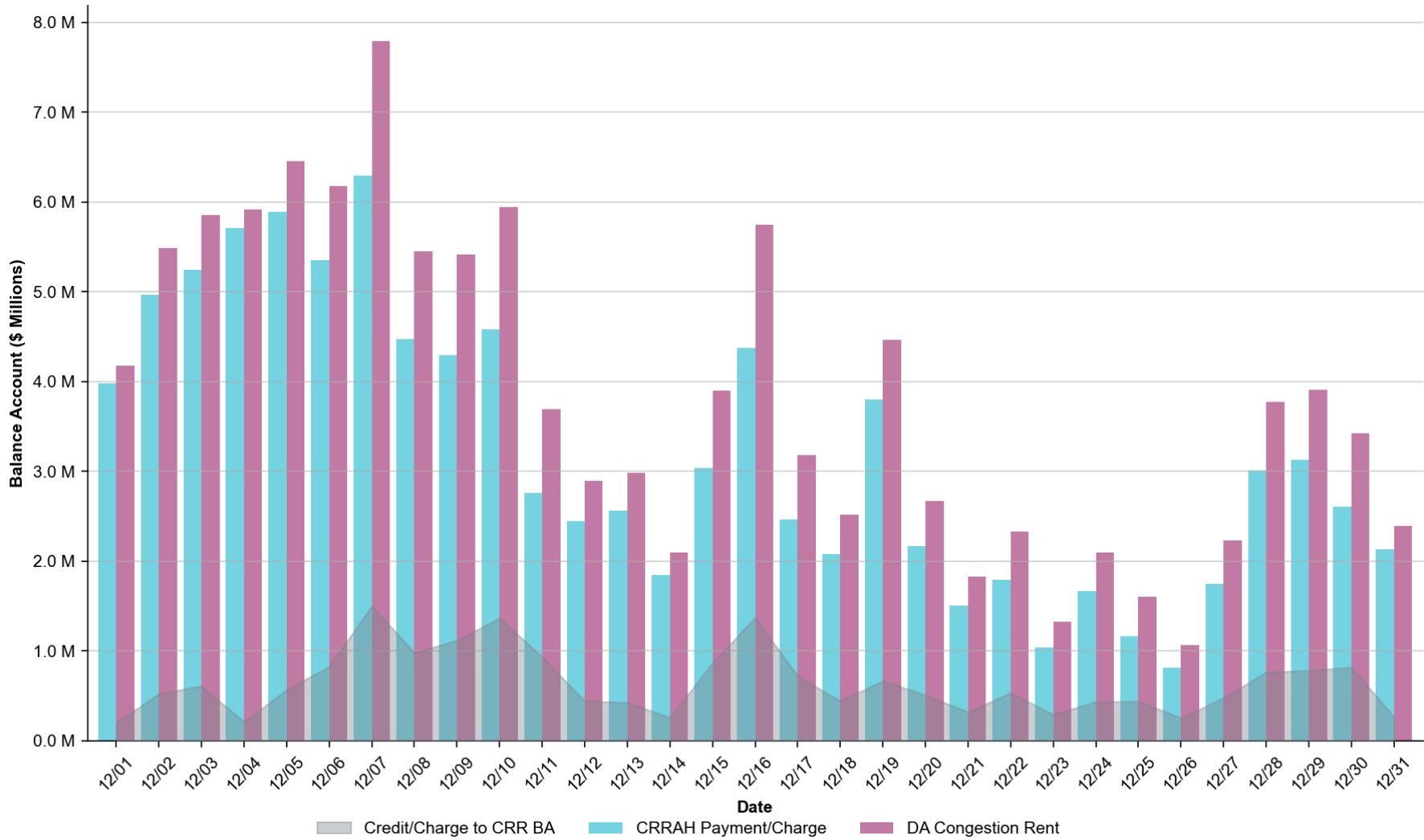
NOTES:

- DAM Oversold on an RTM constraint: The constraint DMGSBTR5: 6036__A contributed ca. \$0.7M toward RENA, primarily attributable to an unavoidable extension of a 345kV transmission line outage not captured in DAM.
- DAM Oversold on an RTM constraint: The constraint DCONLNG5: 6471__C contributed ca. \$0.1M toward RENA, primarily attributable to an unavoidable extension of a 345kV transmission line outage not captured in DAM.
- DAM Oversold on an RTM constraint: The constraint MFOWLOB5: CATARI_PILONC1_1 contributed ca. \$0.13M toward RENA, primarily attributable to a discrepancy in PST tap positions in DAM and RTM.

Summary

- The monthly RENA observed in December totaling \$16.29M was high relative to monthly totals across the past two years, with the bulk of the total accruing during the first part of the month. The high sum can be primarily attributed to transmission line outage discrepancies and GTC limit differences between DAM and RTM.
- The highest RENA observed in December was on OD 12/05 with \$2.71M, which was primarily related to a difference in one of the GTC limits between DAM and RTM and a transmission outage in RTM not captured in DAM.
- PTP w/ links to options in December totaled \$2.00M, which represented a minor impact on the RENA observed.

Monthly CRR Balance Account



Abbreviations

CRR	Congestion Revenue Rights
CRRAH	Congestion Revenue Rights' Account Holders
CRRBA	Congestion Revenue Rights' Balance Account
OD	Operating Day
PTP	Point-to-Point
RENA	Revenue Neutrality Allocation Uplift