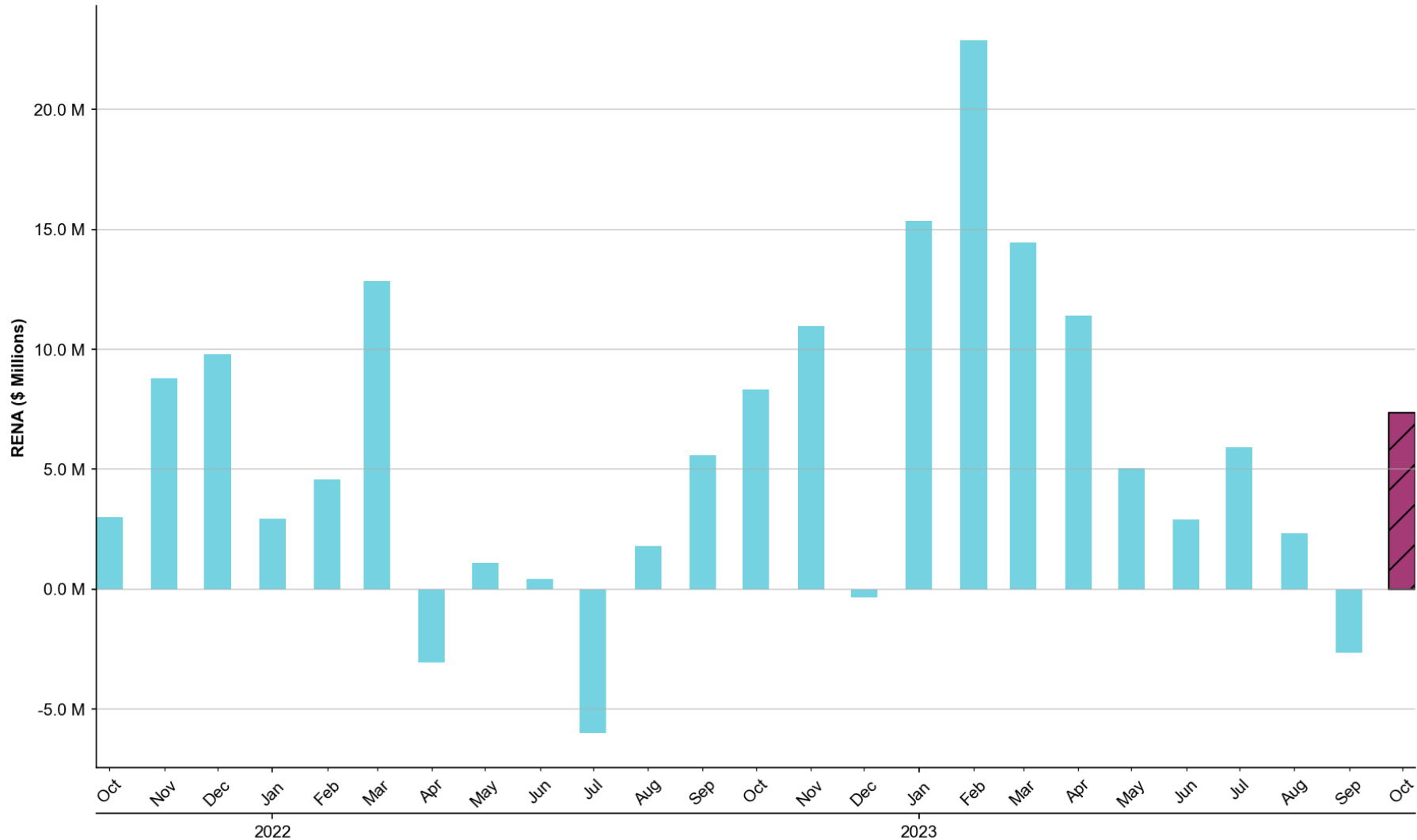


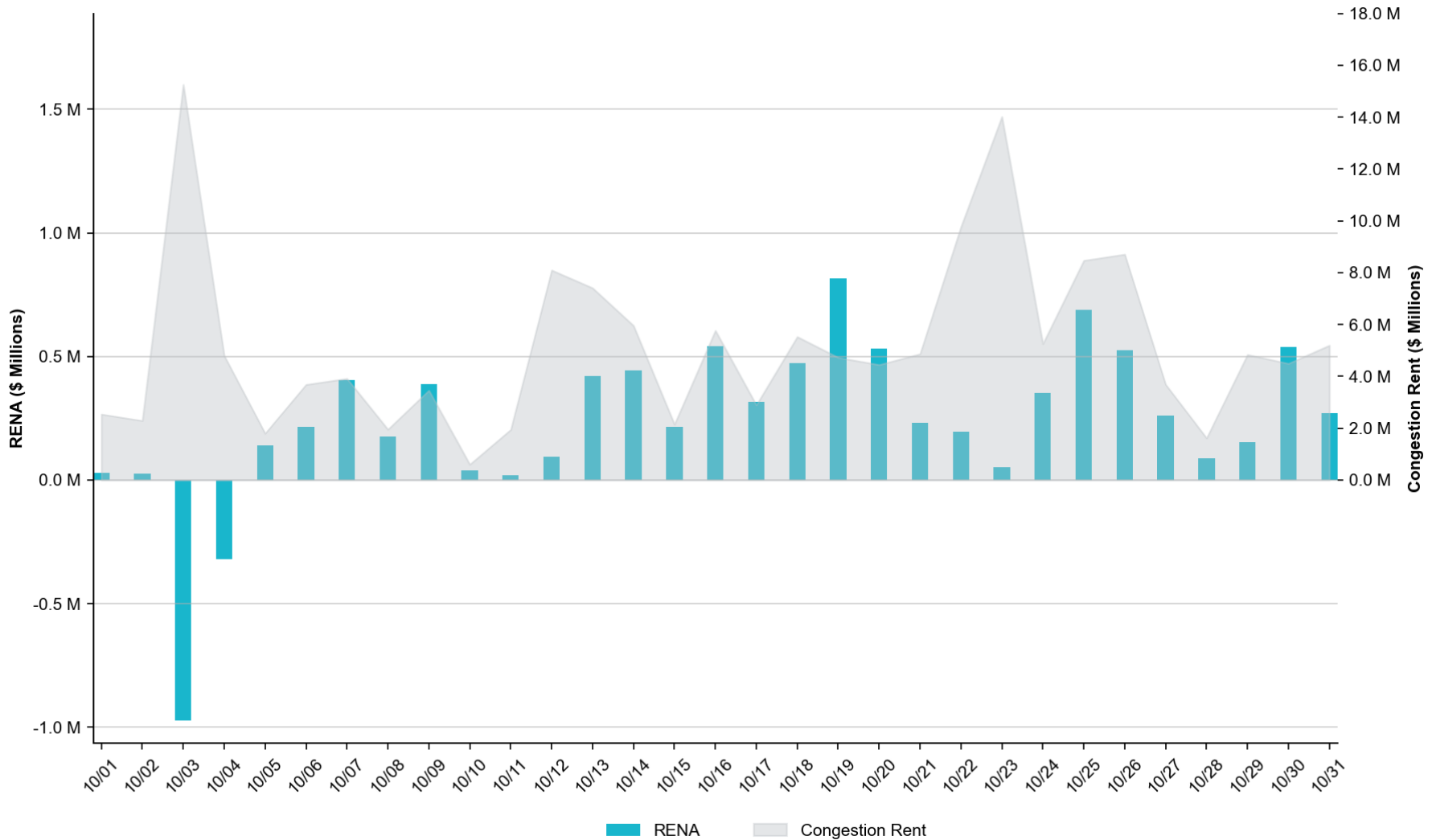
Historical Monthly RENA Totals

The total RENA in October of **\$7.36M** represents the **64th** percentile compared to the monthly RENA totals across the previous two years.



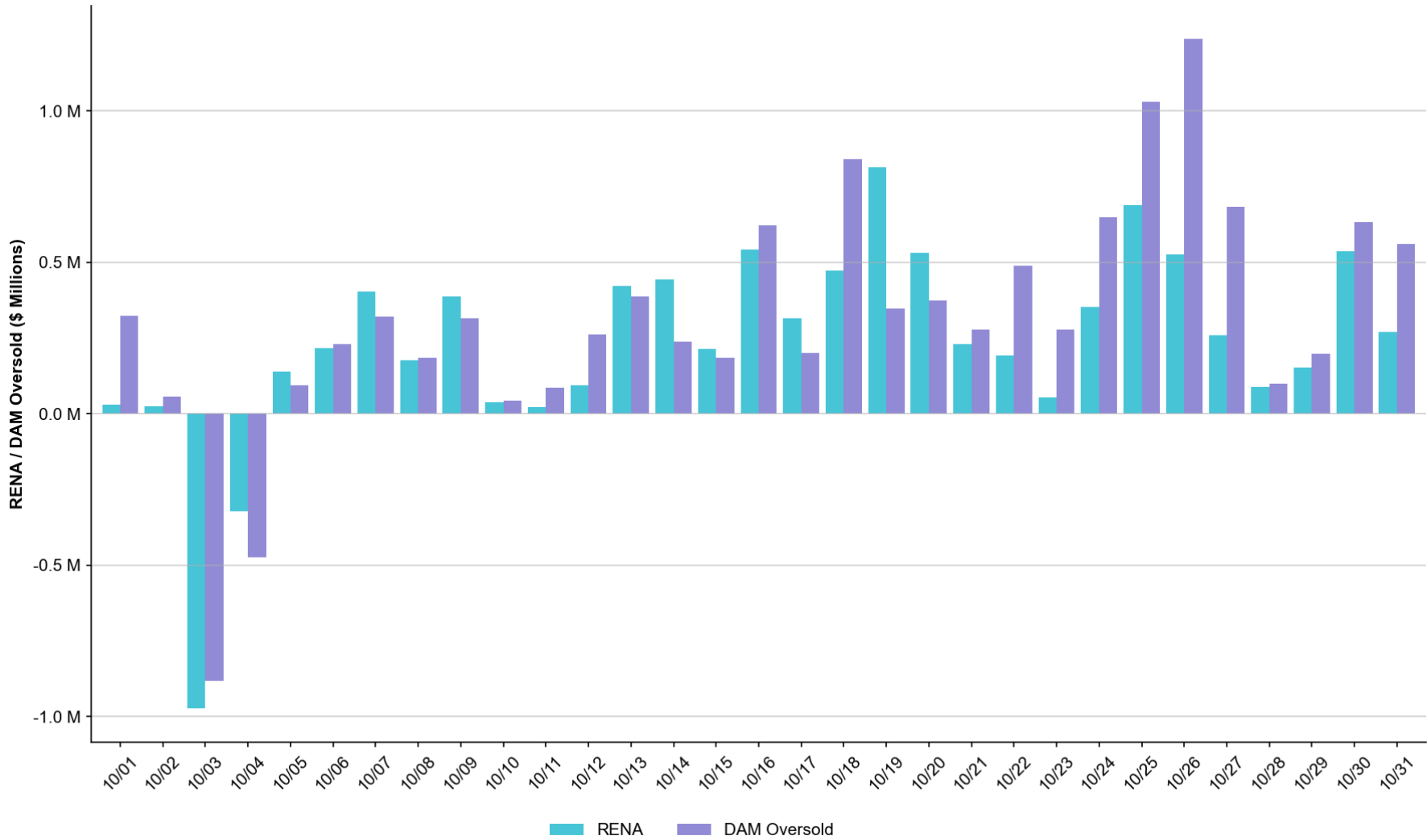
Daily RENA vs. Real-Time Congestion Rent

The total RENA in October was approximately **\$7.36M**, while the total Real-Time congestion rent accrued amounted to **\$160.28M**.



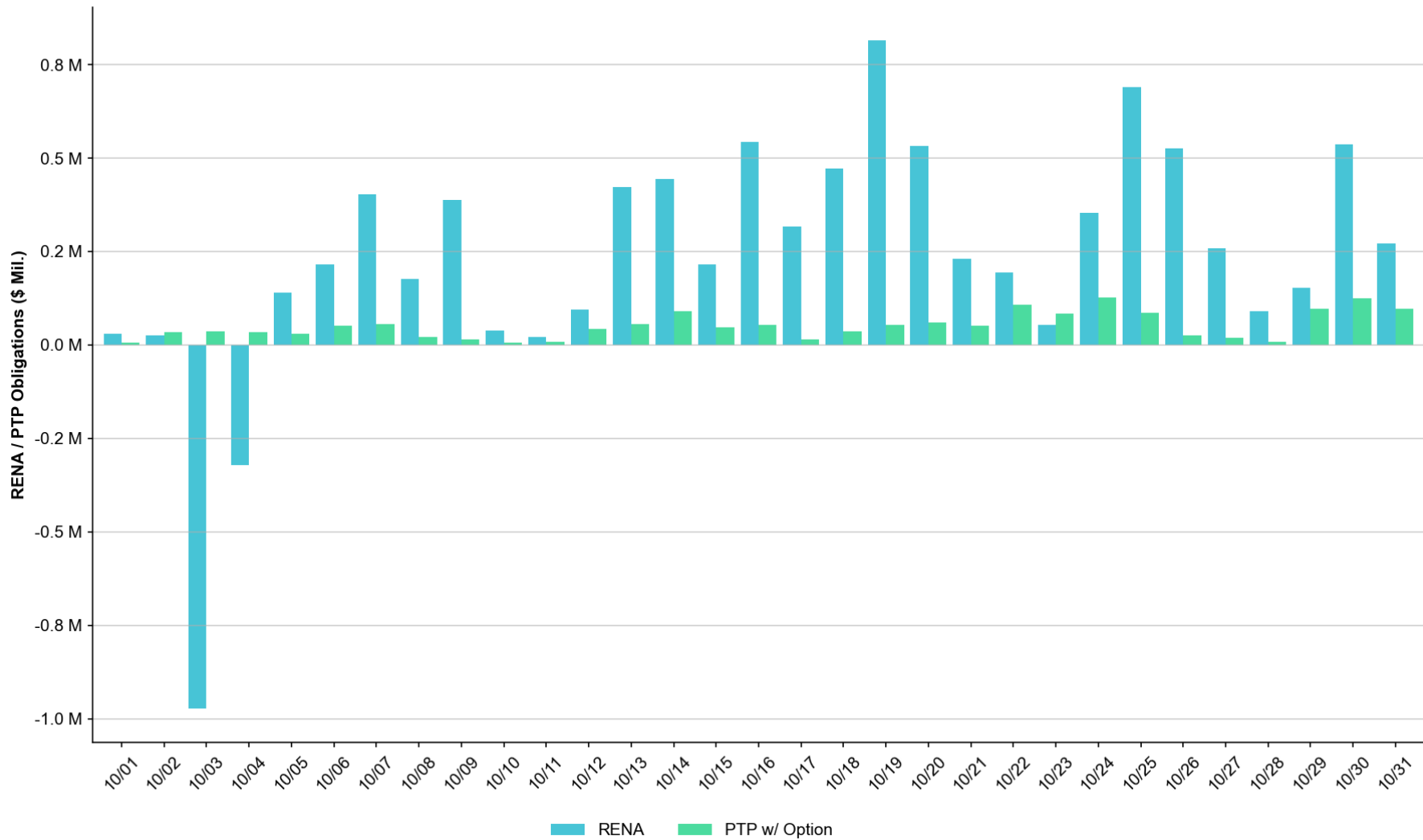
Daily RENA vs. estimated DAM Oversold

The total estimated DAM oversold in October was approximately **\$9.90M**.



Daily RENA vs. PTP w/ Links to Options

The estimated sum of PTPs w/ Links to Options in October totaled **\$1.58M**.



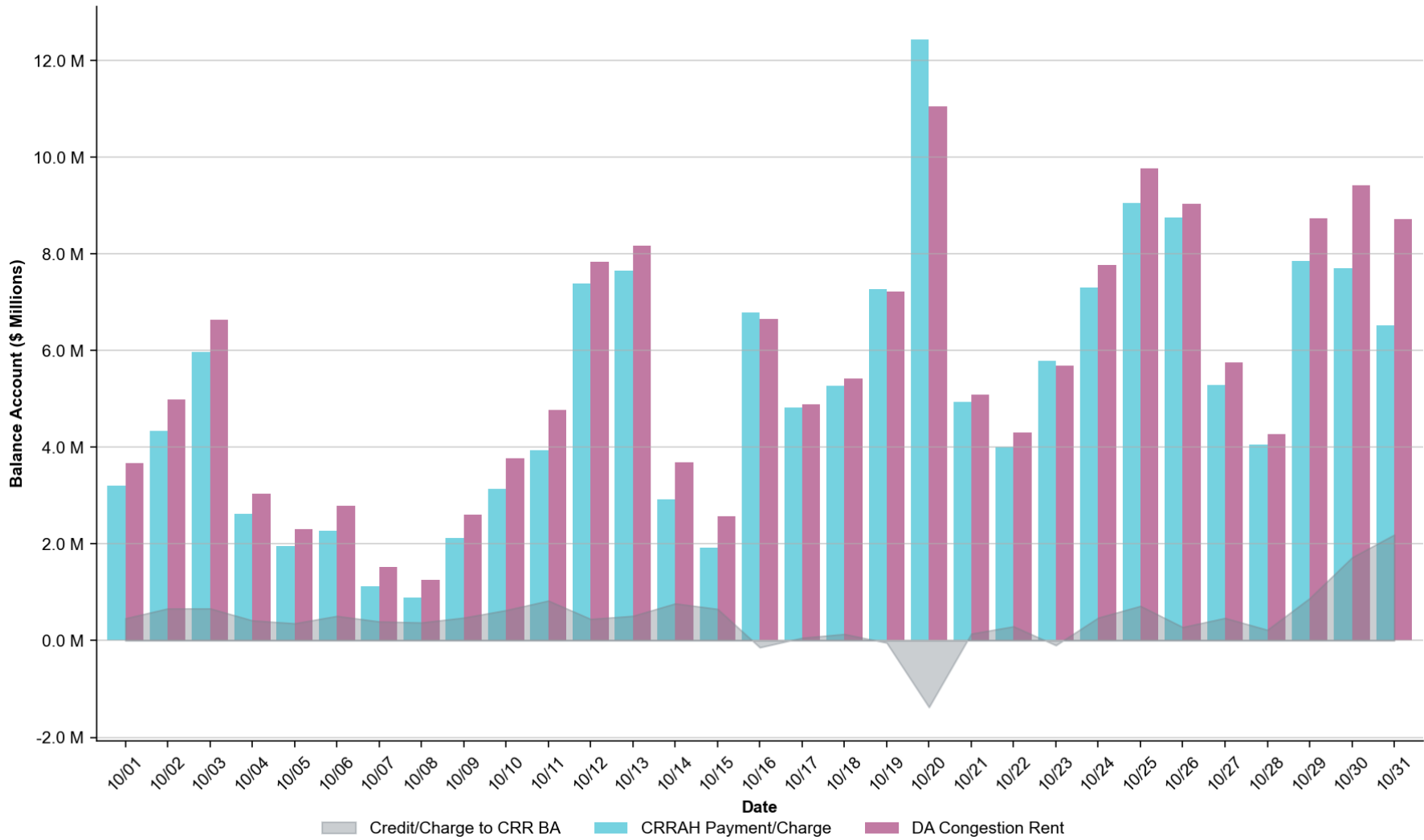
Operating Days with RENA exceeding \$1 million

- There was not an OD with RENA exceeding \$1M.
- A moderate amount of RENA accrued on a significant number of ODs across the month, with few ODs accruing negative RENA.
- Causes for the RENA amounts on the ODs incurring the highest RENA included DAM Oversold quantities attributable to lowered GTC limits in RTM, PST tap discrepancies in RTM and other topology discrepancies between DAM and RTM.

Summary

- The monthly RENA observed in October was elevated totaling **\$7.36M**.
- The highest RENA observed in October occurred on OD **10/19** with **\$0.82M** and was mostly related to DAM Oversold on RTM constraints.
- PTP w/ links to options were relatively low in October totaling **\$1.58M**. The highest sum was accrued on **10/24** with ca. **\$0.13M**.

Monthly CRR Balance Account



Abbreviations

CRR	Congestion Revenue Rights
CRRAH	Congestion Revenue Rights' Account Holders
CRRBA	Congestion Revenue Rights' Balance Account
OD	Operating Day
PTP	Point-to-Point
RENA	Revenue Neutrality Allocation Uplift