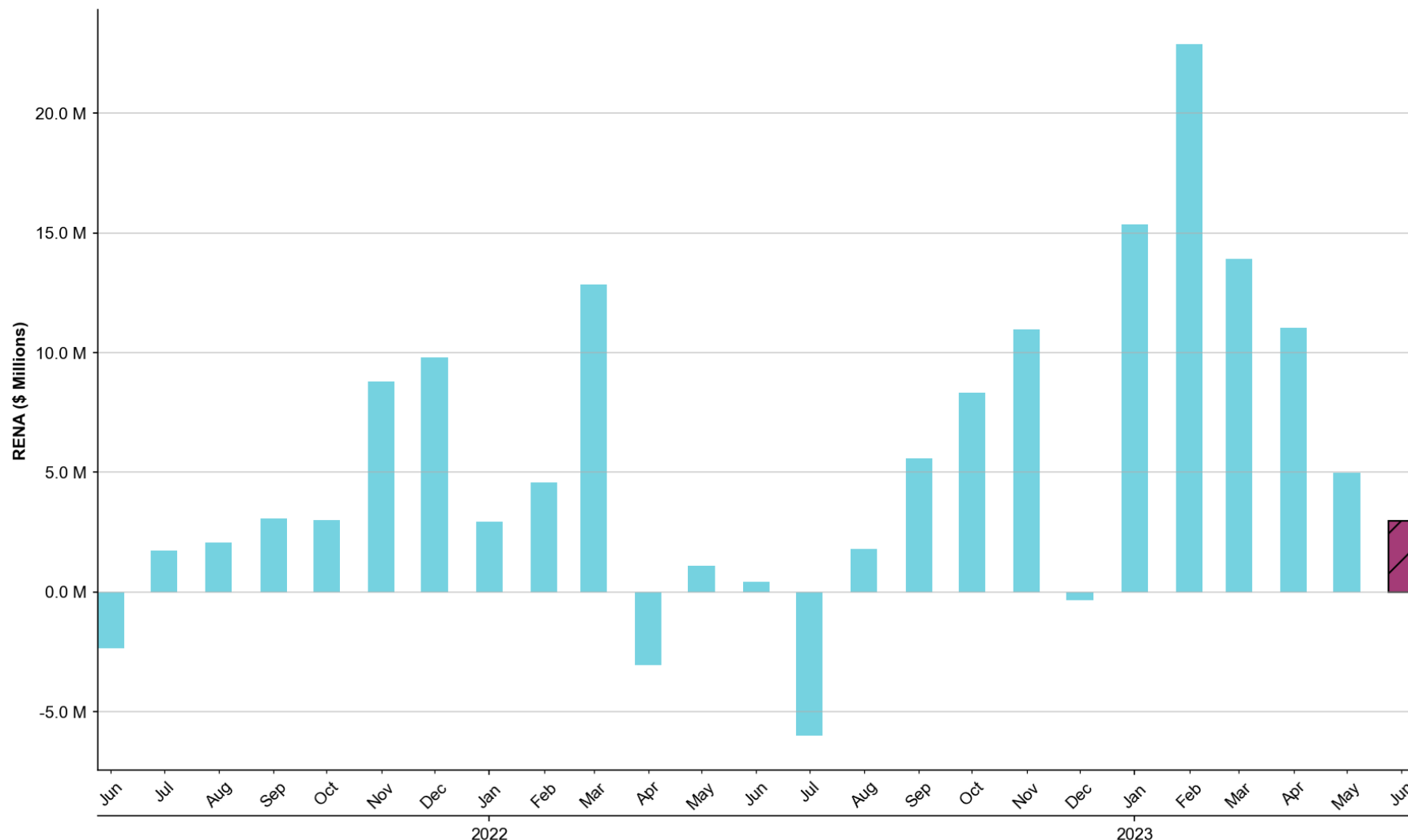


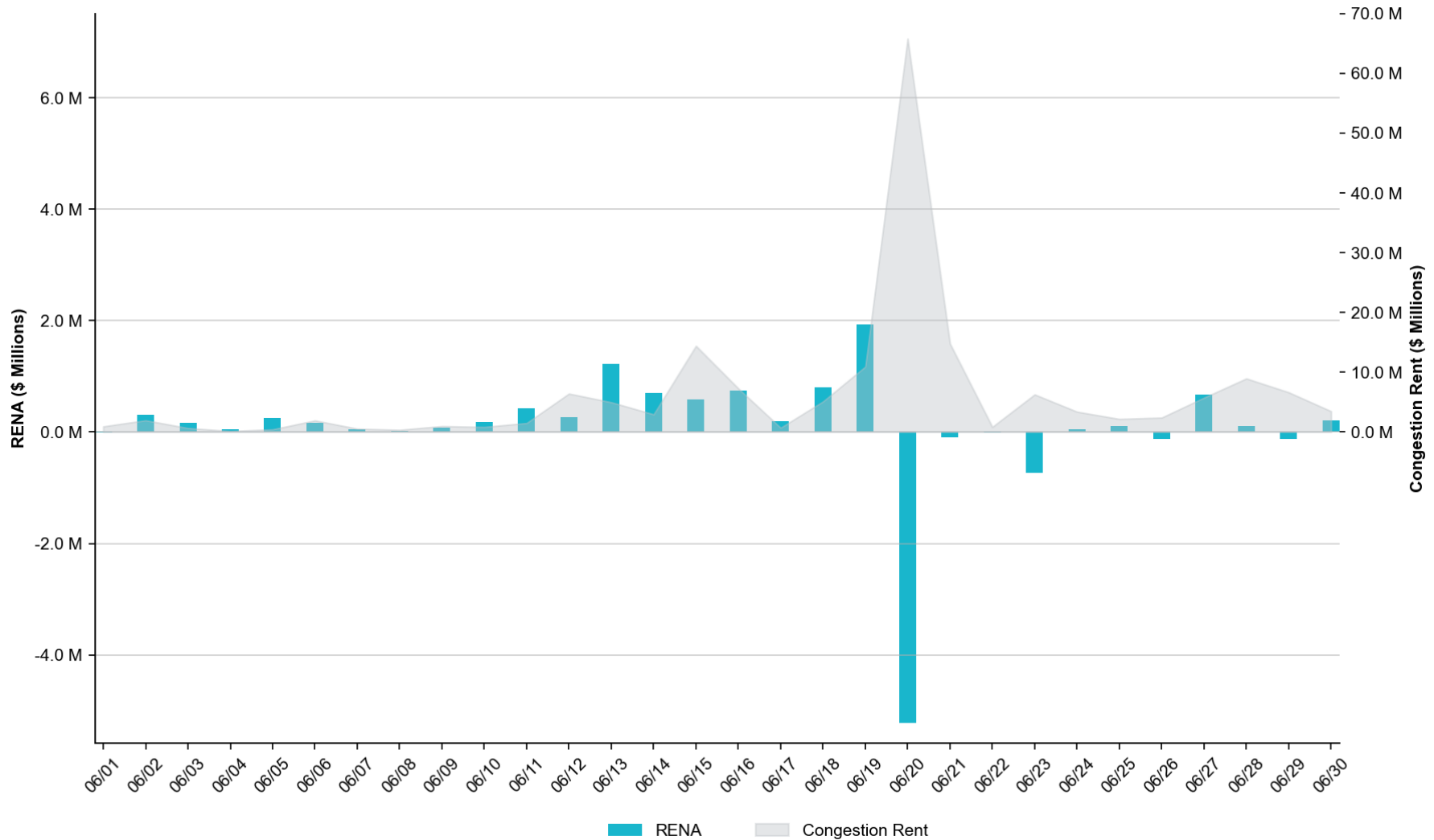
Historical Monthly RENA Totals

The total RENA in June of **\$2.96M** represents the **44th** percentile compared to the monthly RENA totals across the previous two years.



Daily RENA vs. Real-Time Congestion Rent

The total RENA in June was approximately **\$2.96M**, while the total Real-Time congestion rent accrued amounted to **\$183.76M**.



Daily RENA vs. estimated DAM Oversold

The total estimated DAM oversold in June was approximately **\$-2.88M**.



Operating Days with RENA exceeding \$1 million

OPERATING DAY	RENA	RT CONGESTION RENT	DAM OVERSOLD	PTP W/ OPTION
June-13	\$1.23M	\$4.98M	\$0.97M	\$0.22M

NOTES:

- The main contributing factor to RENA on the OD was the DAM oversold on SSTILOM8: SCARBI_TITAN_1_1 (ca. \$0.6M).

OPERATING DAY	RENA	RT CONGESTION RENT	DAM OVERSOLD	PTP W/ OPTION
June-19	\$1.93M	\$10.94M	\$0.92M	\$0.65M

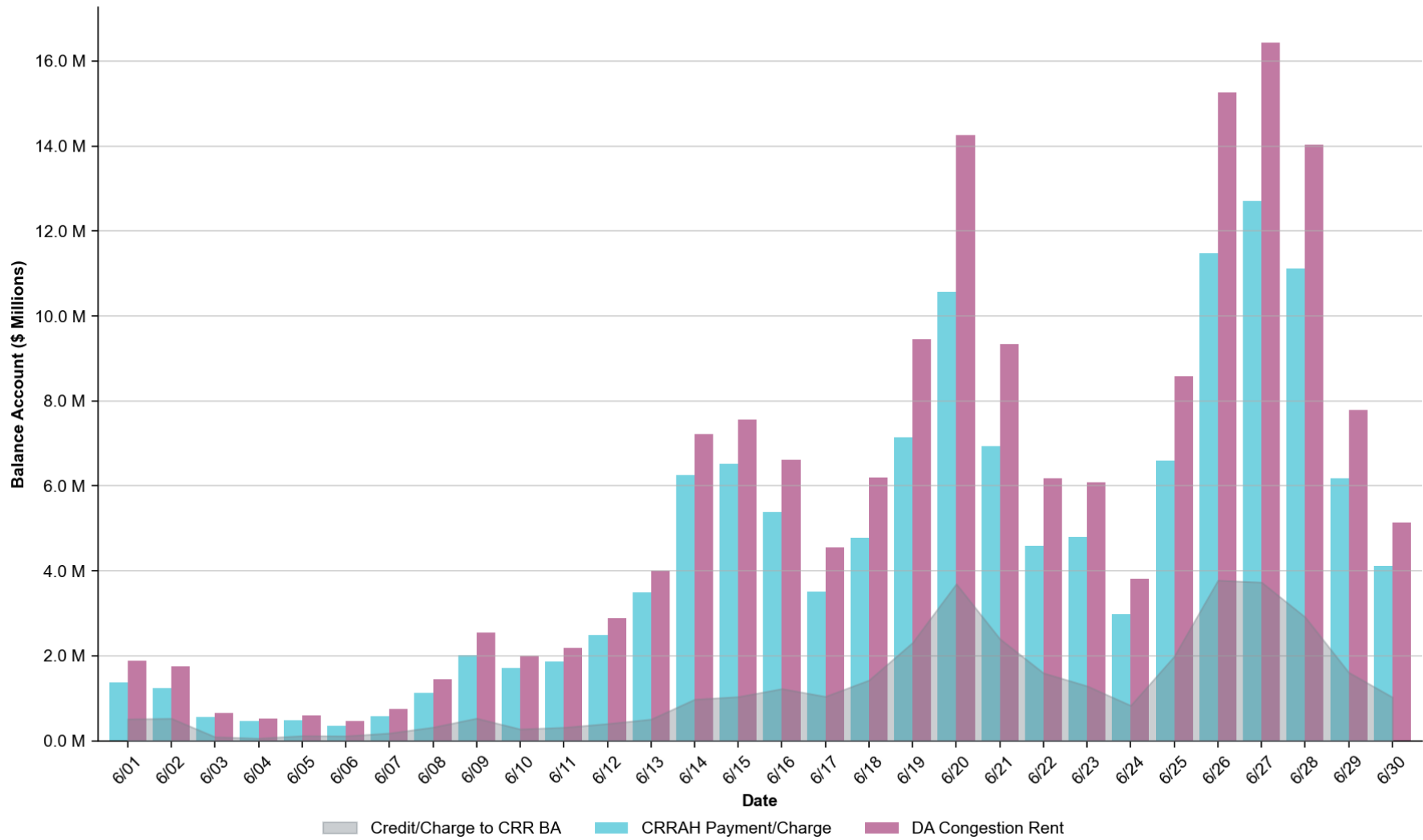
NOTES:

- A key contributing factor towards RENA on the OD was a large difference between SCED calculated RT Congestion Rent and the Settlement Collected Congestion Rent. The reason for the Congestion Rent difference was that a resource's EPS Meters were located on electrical buses that were de-energized by contingency DCC3_NED, while SCED dispatched the associated resource's units to a much lower price in real-time. The difference in price from the much higher de-energized bus prices (and ultimately Settlement Prices at the meter) and the lower real-time prices contributed to the elevated RENA.
- Another contributing factor towards RENA on the OD was the amount paid out to PTP w/ links to options, caused in large part by congestion in the Rio Grande Valley.

Summary

- The monthly RENA observed was relatively low in June with a total of **\$2.96M**.
- The highest RENA observed in June was on OD **06/19** with **\$1.93M**, which was mostly related to a revenue difference between Resources and their associated meters.
- PTP w/ links to options was relatively high in June with a total of **\$7.93M**.

Monthly CRR Balance Account



Abbreviations

CRR	Congestion Revenue Rights
CRRAH	Congestion Revenue Rights' Account Holders
CRRBA	Congestion Revenue Rights' Balance Account
OD	Operating Day
PTP	Point-to-Point
RENA	Revenue Neutrality Allocation Uplift