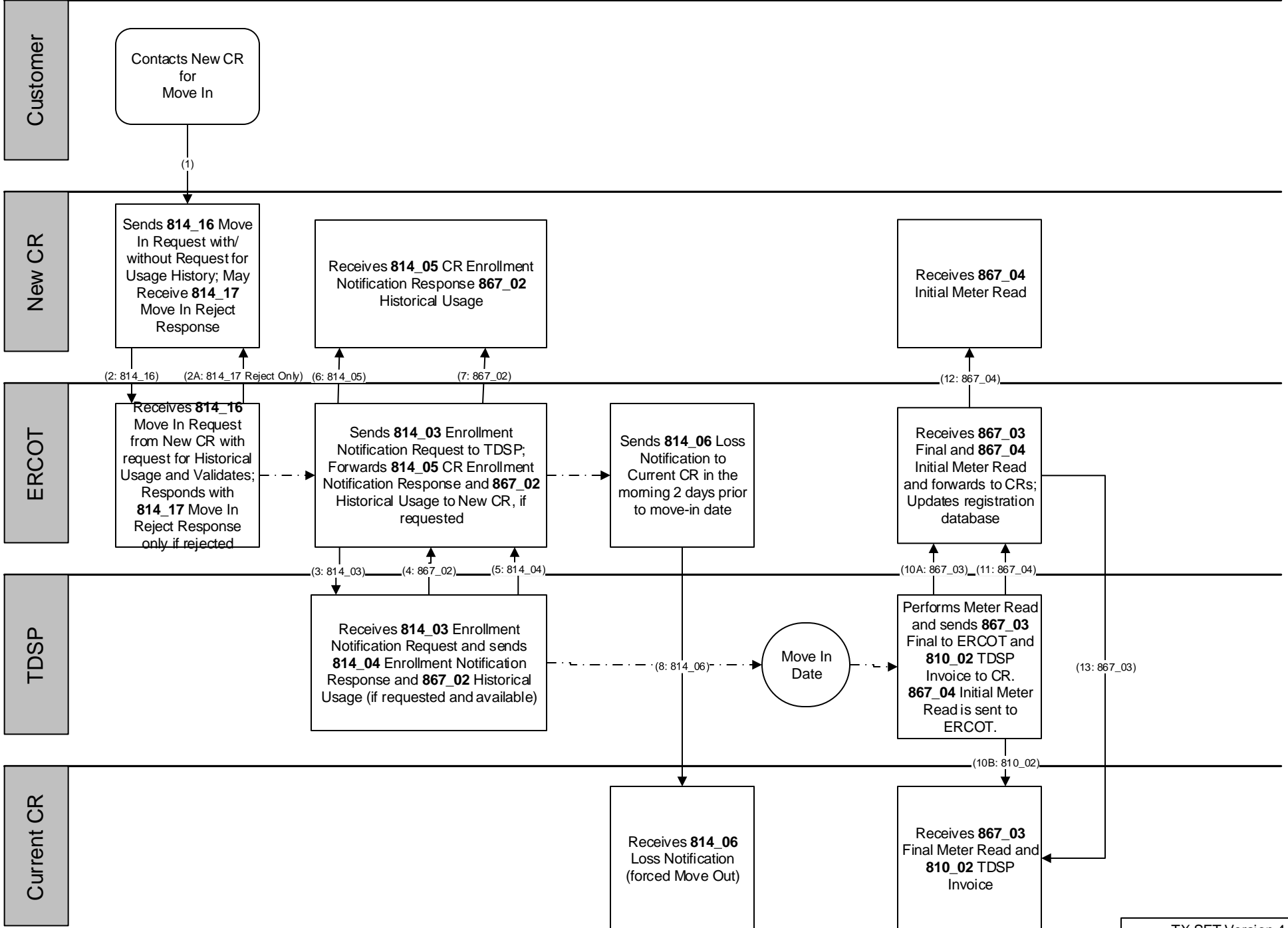


Move In

Scenario: Customer Move In, the ESI ID is energized with a Current CR

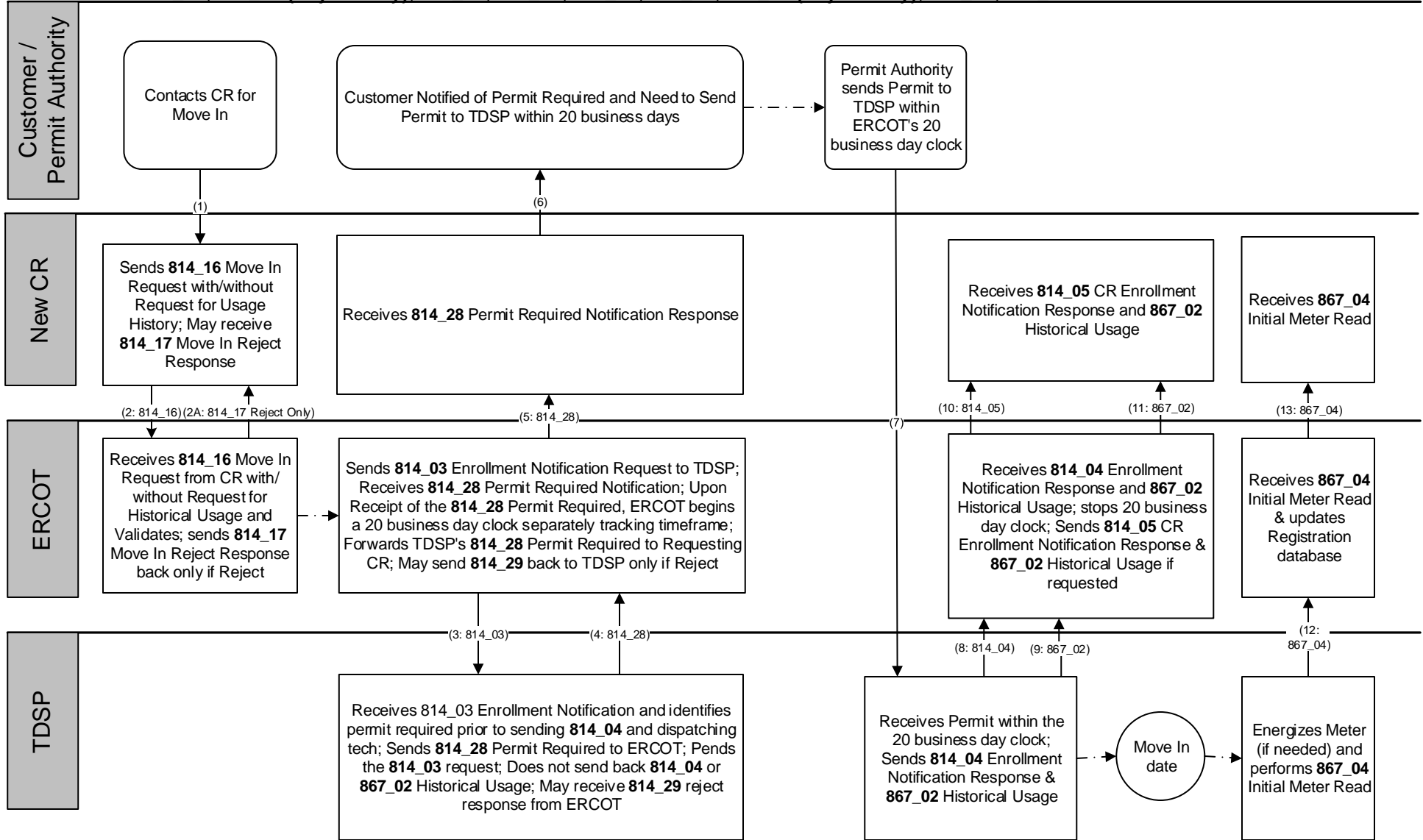
Transactions: 814_16, 814_17 (Reject Only), 814_03, 814_04, 814_05, 814_06, 867_02, 867_03, 810_02, 867_04



Move In

Scenario: Customer Move In, Permit Required Identified Prior to TDSP Sending 814_04 and Prior to Dispatching Field Technician, Permit Received by TDSP within the 20 Business Day ERCOT Clock (premise de-energized)

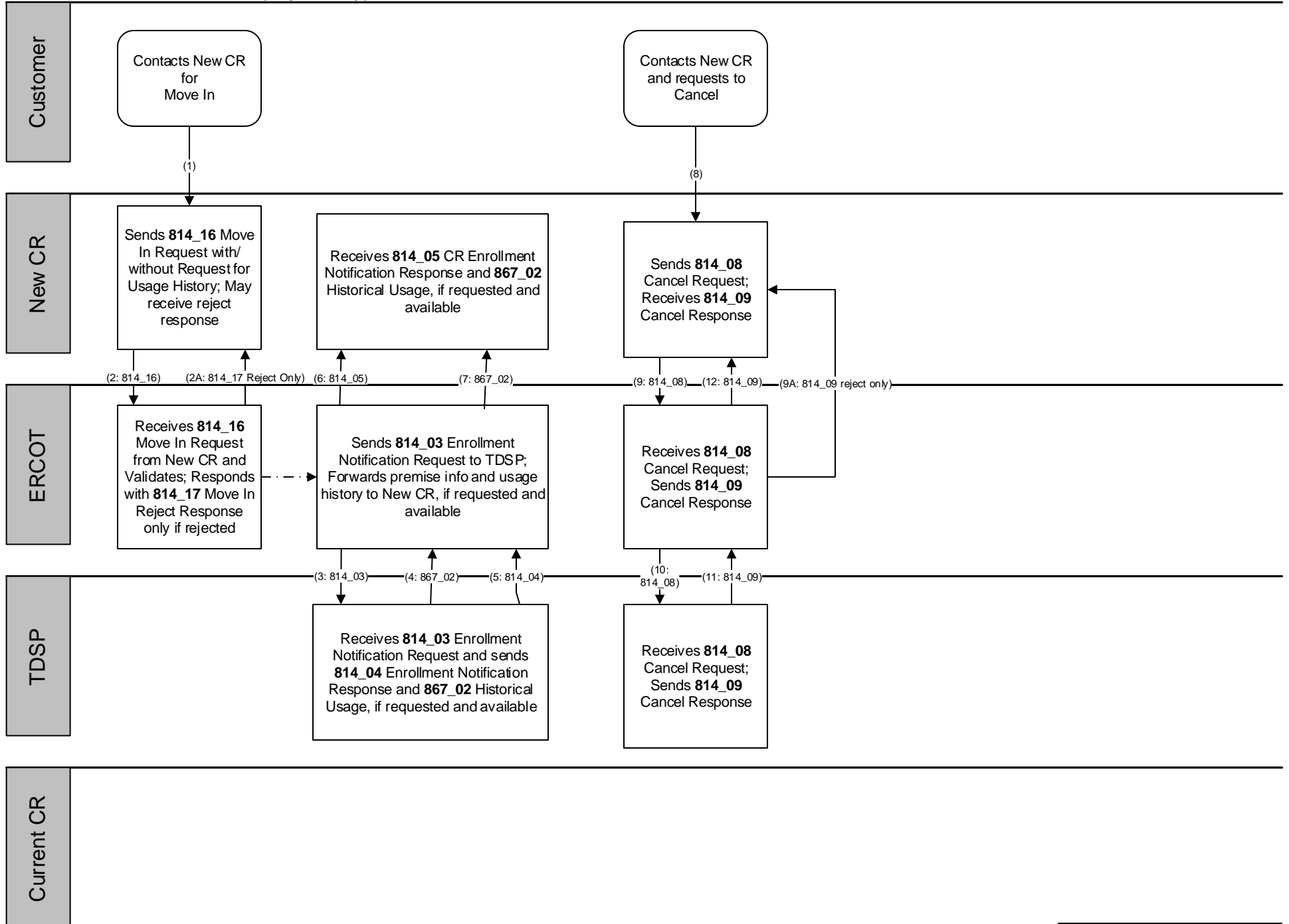
Transactions: 814 16, 814 17 (Reject Only), 814 03, 814 04, 814 05, 814 28, 814 29 (Reject Only), 867 02, 867 04



Move In, Customer Requests Cancel and TDSP accepts

Scenario: Customer Move In, Customer requests cancel and TDSP accepts

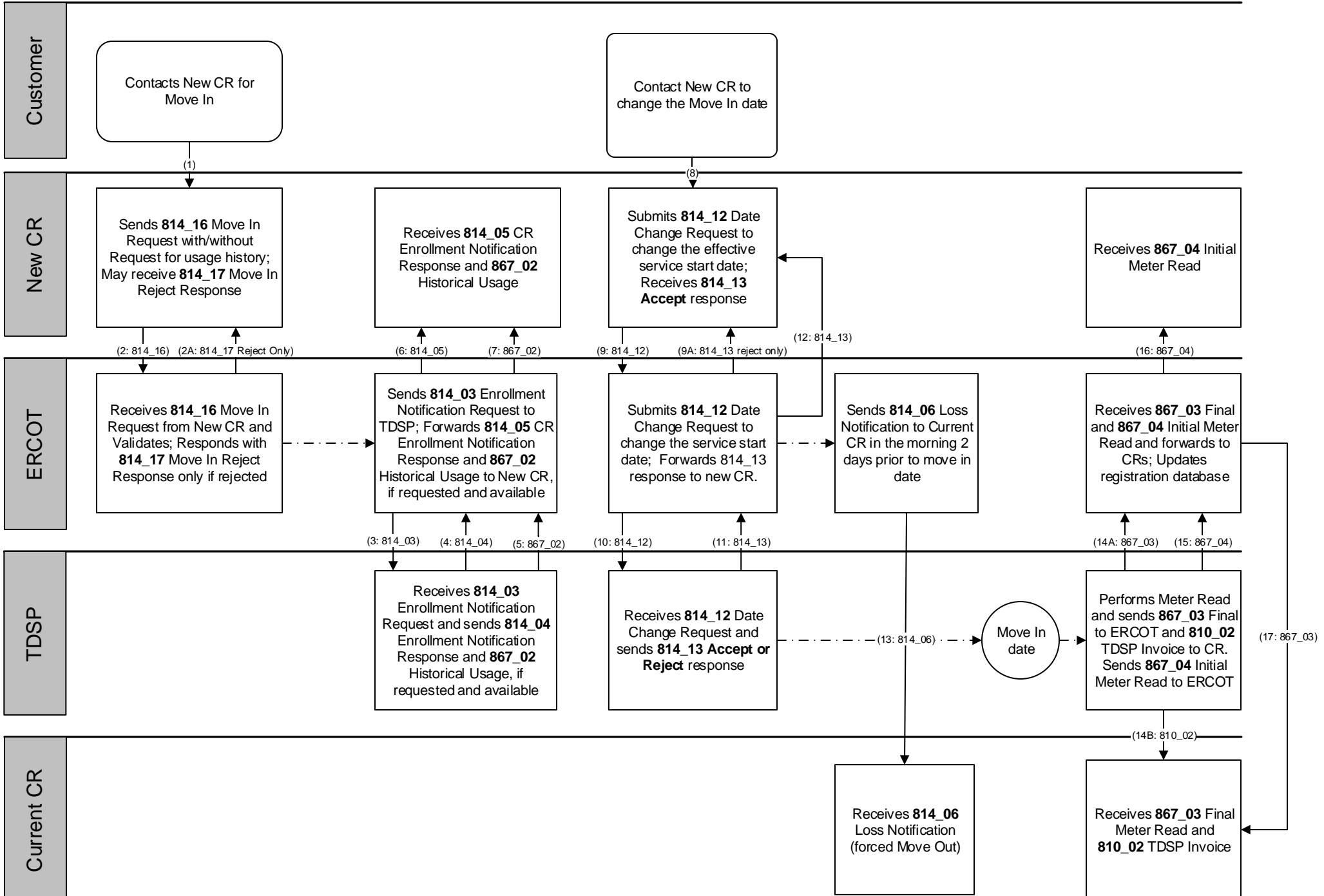
Transactions: 814_16, 814_17 (Reject Only), 814_03, 814_04, 814_05, 814_08, 814_09, 867_02



Move-In

Scenario: Customer Move In, Customer Changes Date of Move In- Date Change Accepted, (premise energized)

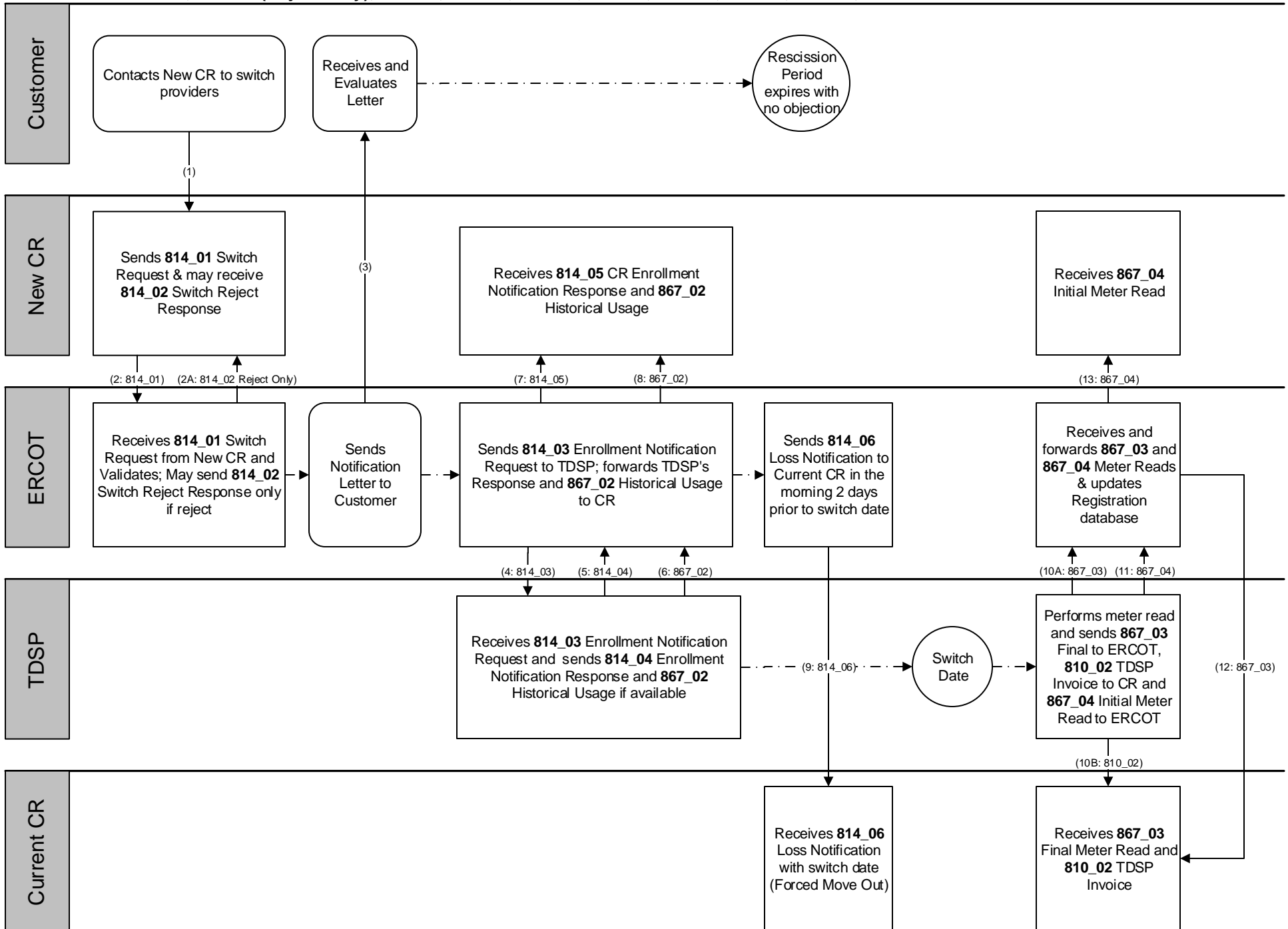
Transactions: 814_16, 814_17 (Reject Only), 814_03, 814_04, 814_05, 814_12, 814_13, 814_06, 867_02, 867_03, 810_02, 867_04



Switch

Scenario: Customer Switch, No Customer Objection

Transactions: 814_01, 814_02 (Reject Only), 814_03, 814_04, 814_05, 814_06, 867_02, 867_03, 810_02, 867_04

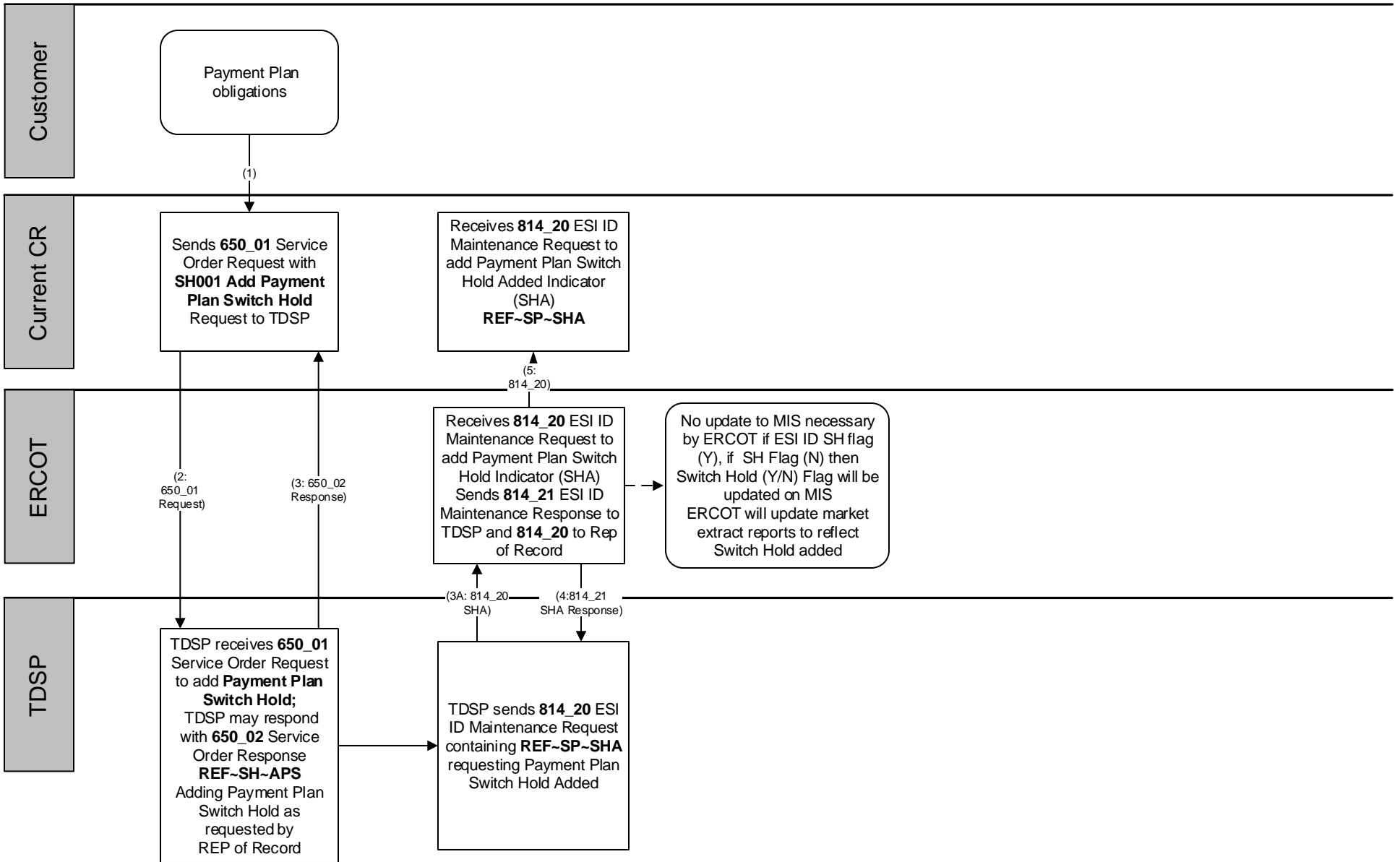


Payment Plan Switch Hold Add Process

Scenario: Customer under Payment Plan Switch Hold obligation. CR sends 650_01 to Add Switch Hold Indicator.

Transactions: 650_01, 650_02, 814_20 and 814_21 (ERCOT to TDSP Only)

Effective: June 2012

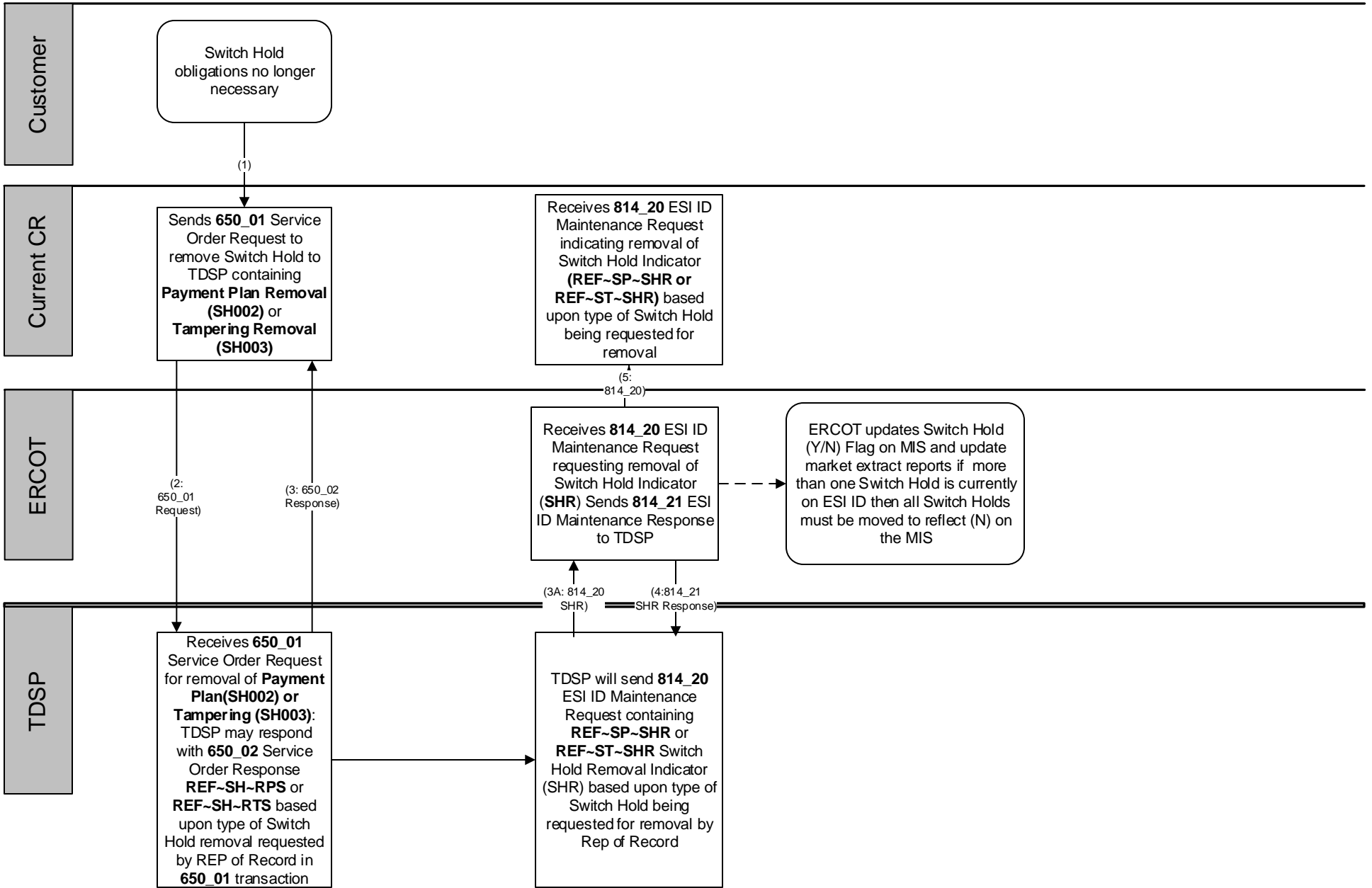


Switch Hold Removal Process

Scenario: Customer no longer under Switch Hold obligation(Payment Plan/Tampering) CR sending 650_01 to Remove specific Switch Hold Indicator

Transactions: 650_01, 650_02, 814_20 and 814_21 (ERCOT to TDSP Only)

Effective: June 2012

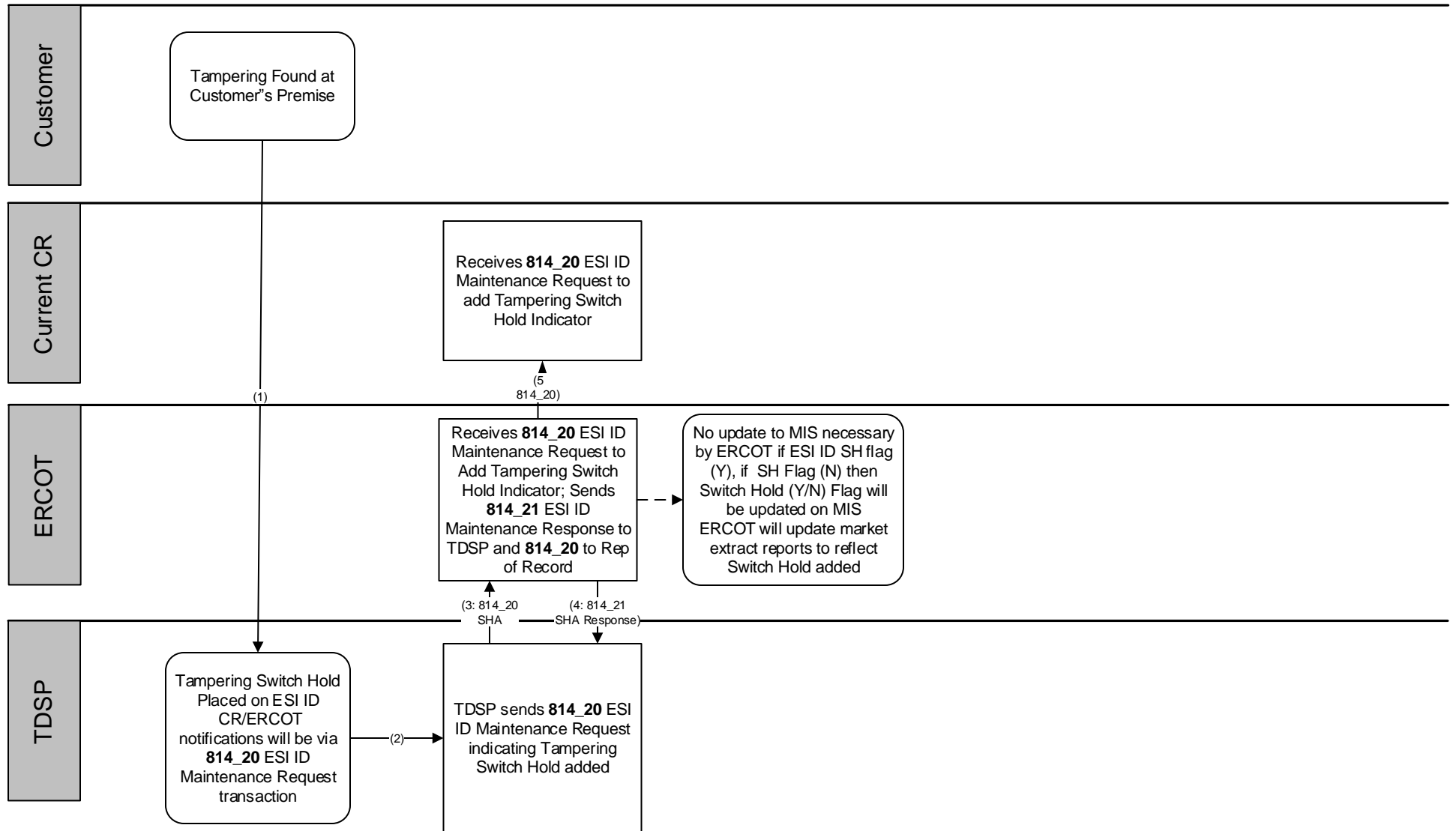


Tampering Switch Hold Add Process

Scenario: TDSP found Tampering at Customer's Premise –TDSP Adds Tampering Switch Hold Indicator.

Transactions: 814_20 and 814_21 (ERCOT to TDSP Only)

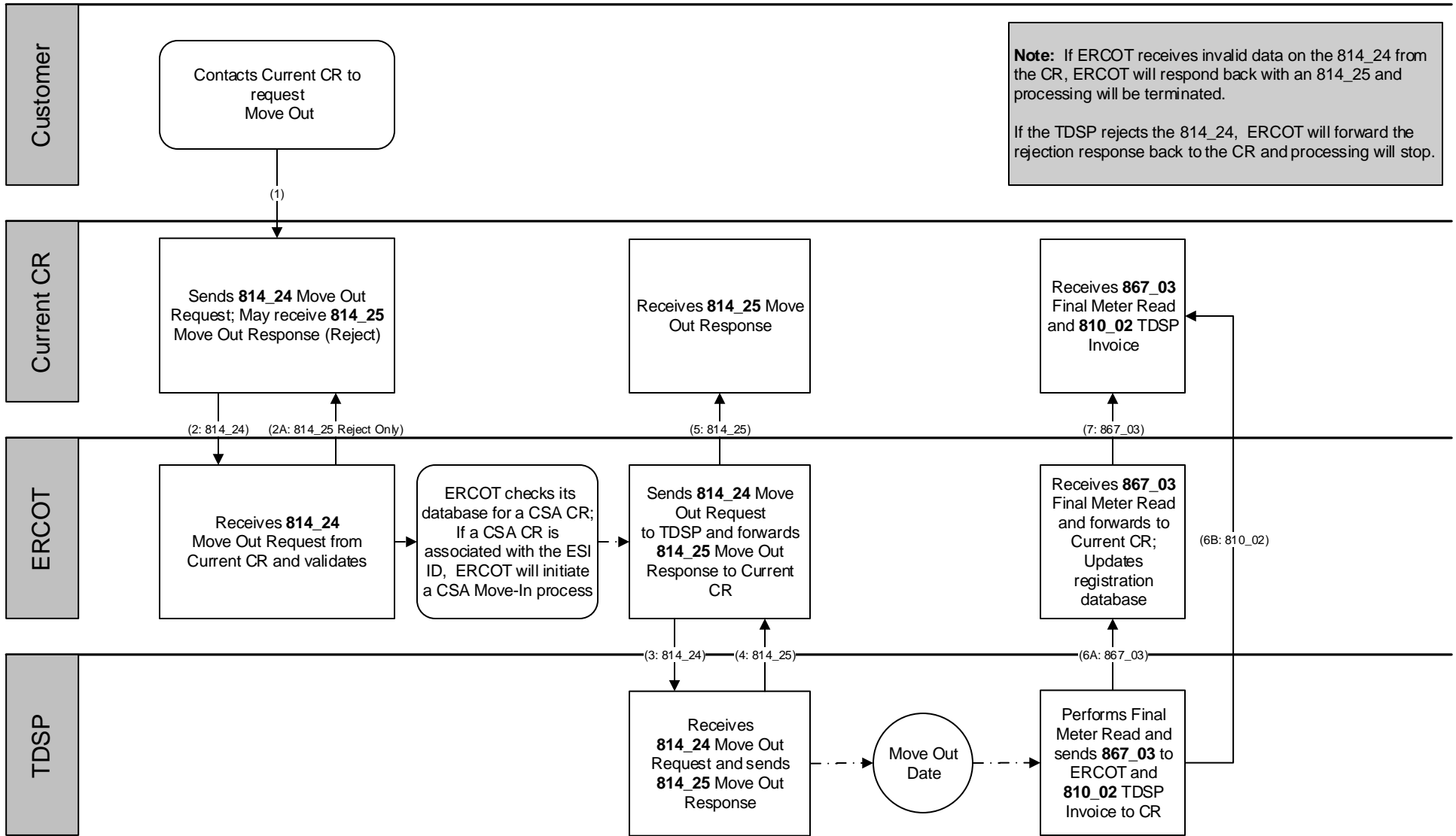
Effective: June 2012



Move Out

Scenario: Customer Initiated Move Out No CSA Associated with ESI ID

Transactions: 814_24, 814_25, 867_03, 810_02



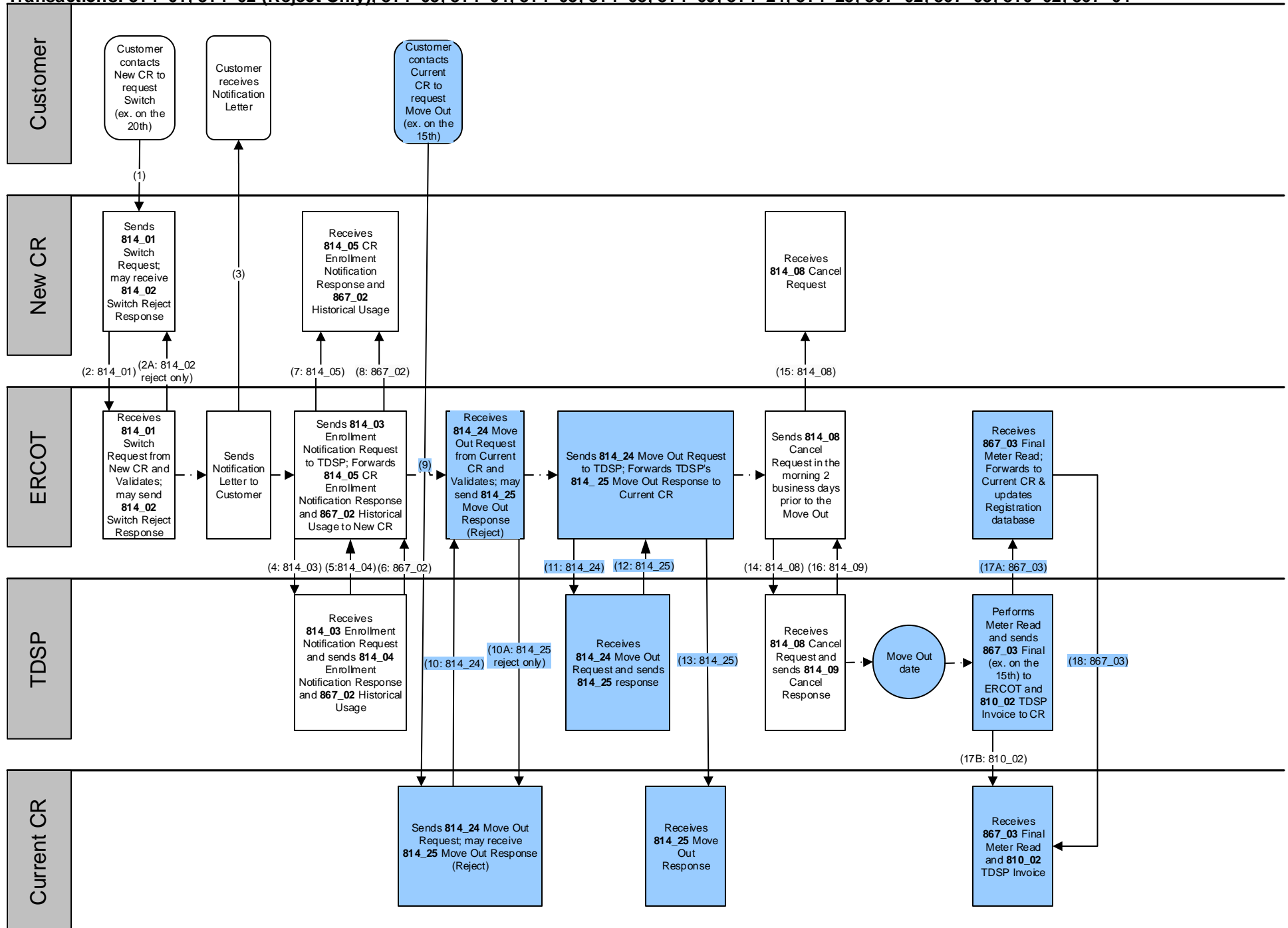
Note: If ERCOT receives invalid data on the 814_24 from the CR, ERCOT will respond back with an 814_25 and processing will be terminated.

If the TDSP rejects the 814_24, ERCOT will forward the rejection response back to the CR and processing will stop.

Move Out

Scenario: Move Out trumps Switch for later date

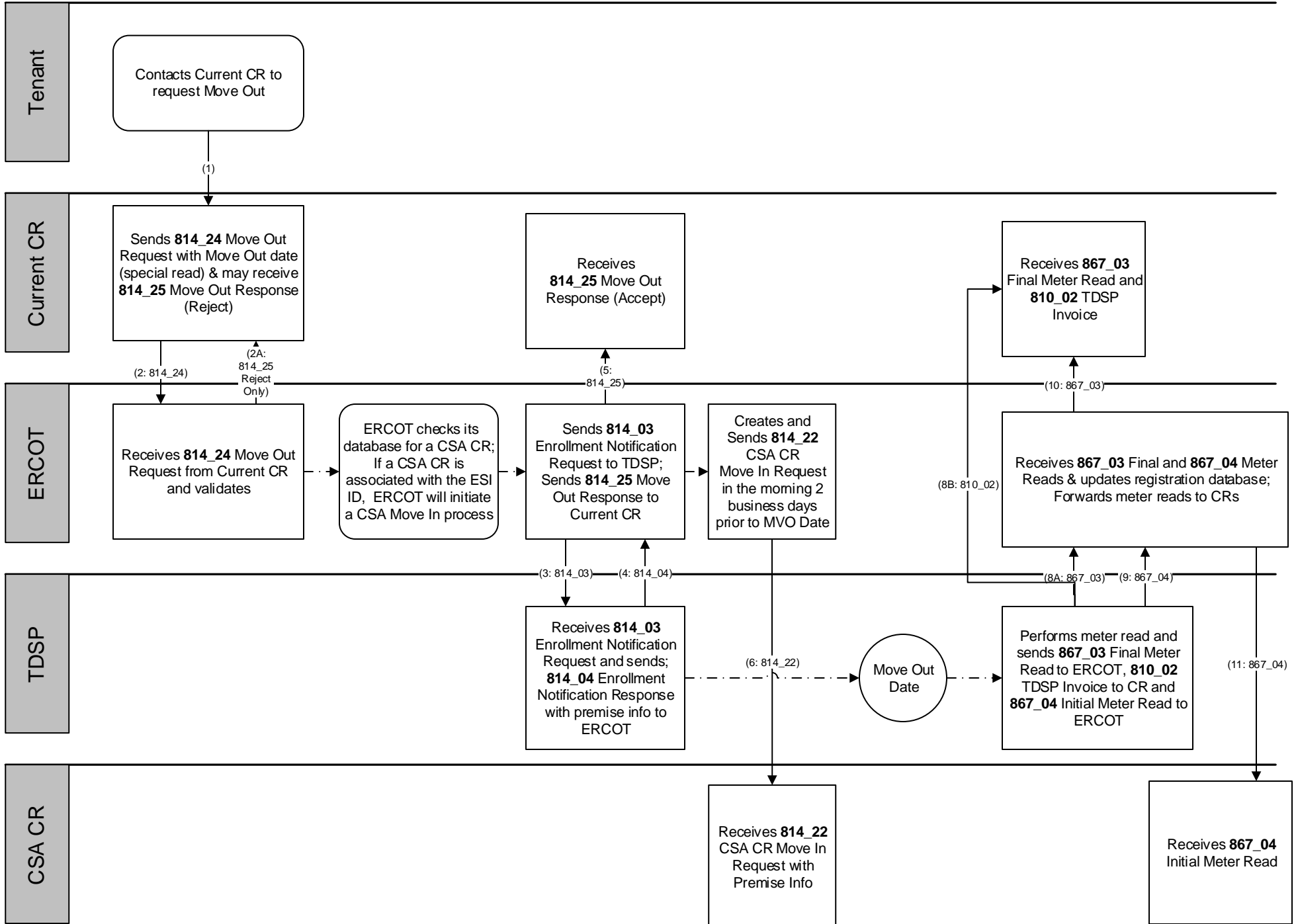
Transactions: 814_01, 814_02 (Reject Only), 814_03, 814_04, 814_05, 814_08, 814_09, 814_24, 814_25, 867_02, 867_03, 810_02, 867_04



Move Out to CSA

Scenario: Move Out, Landlord/Tenant, "Tenant Initiated"

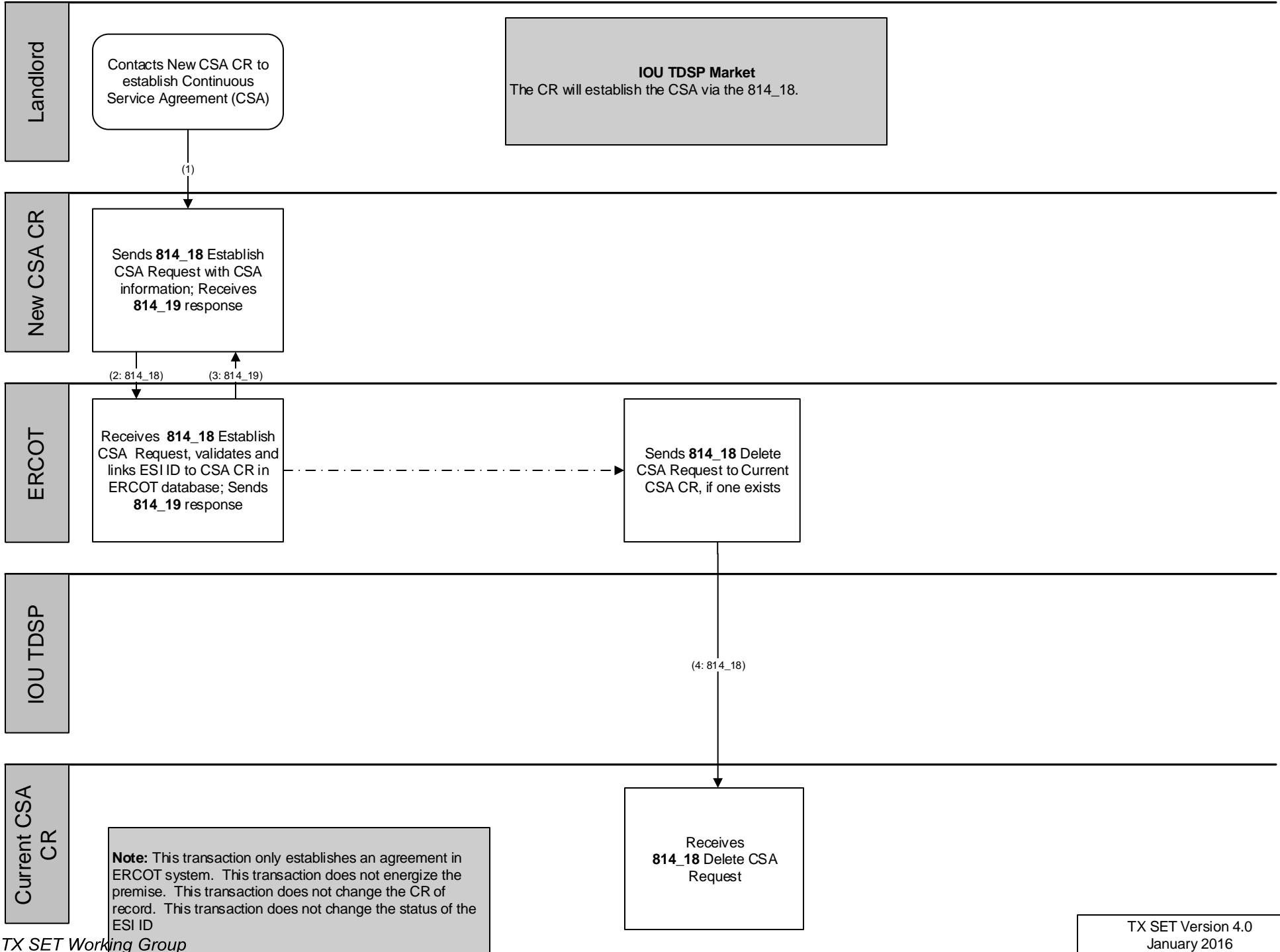
Transactions: 814_24, 814_25, 814_03, 814_04, 814_22, 867_03, 810_02, 867_04



Establish Continuous Service Agreement (CSA) - IOU

Scenario: Establish CSA – IOU territory

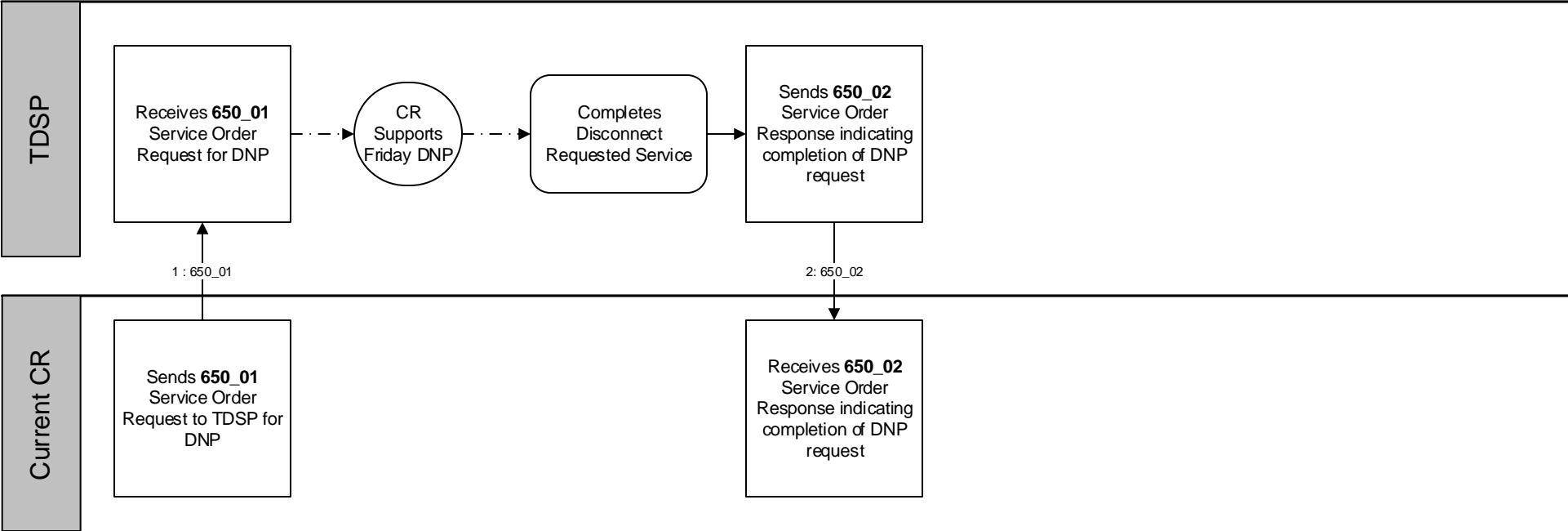
Transactions: 814_18, 814_19



Service Request for Disconnect for Non-Pay (DNP)

Scenario: CR authorizes DNP on Friday and allows TDSP to ROLL to premium disconnect location.

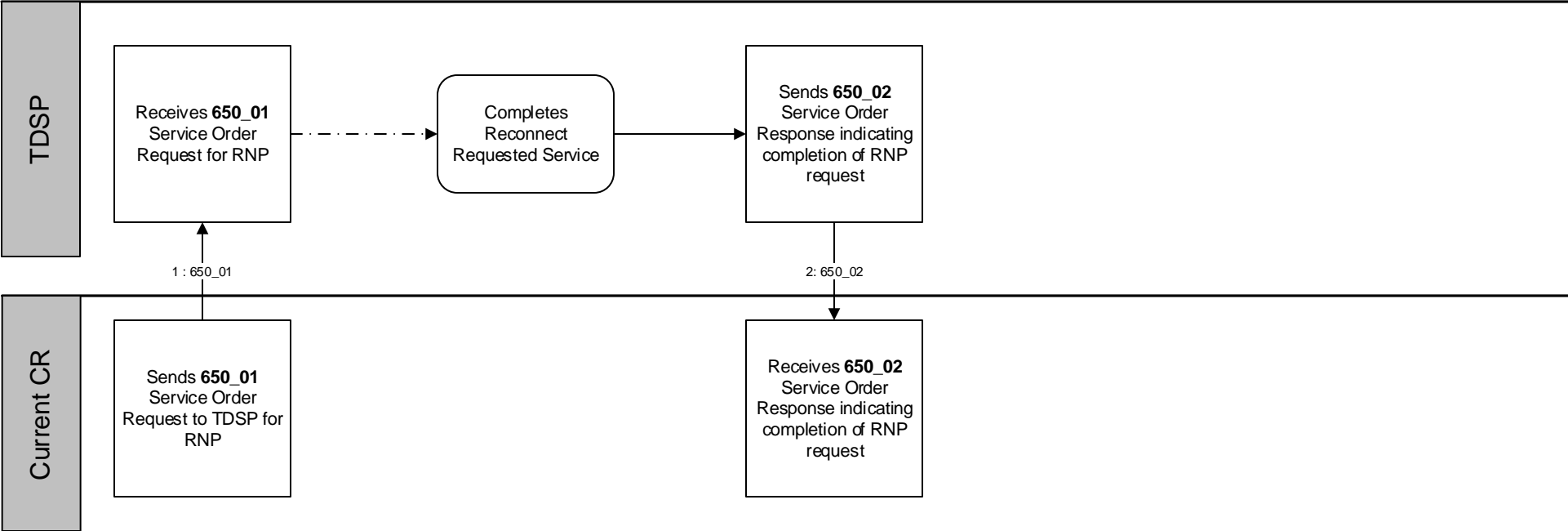
Transactions: 650_01, 650_02



Service Request for Reconnect for Non-Pay (RNP)

Scenario: CR authorizes RNP and TDSP completes.

Transactions: 650_01, 650_02



Mass Transition

Scenario: Mass Transition; Switch (814_03) initiated by ERCOT to transition ESI IDs from Defaulting (Losing) CR to Gaining or Designated CR
 Transactions: 814_03, 814_04, 867_02, 814_11, 814_14, 867_03, 810_02, 867_04

