



Item 9.2: System Operations Update

Dan Woodfin

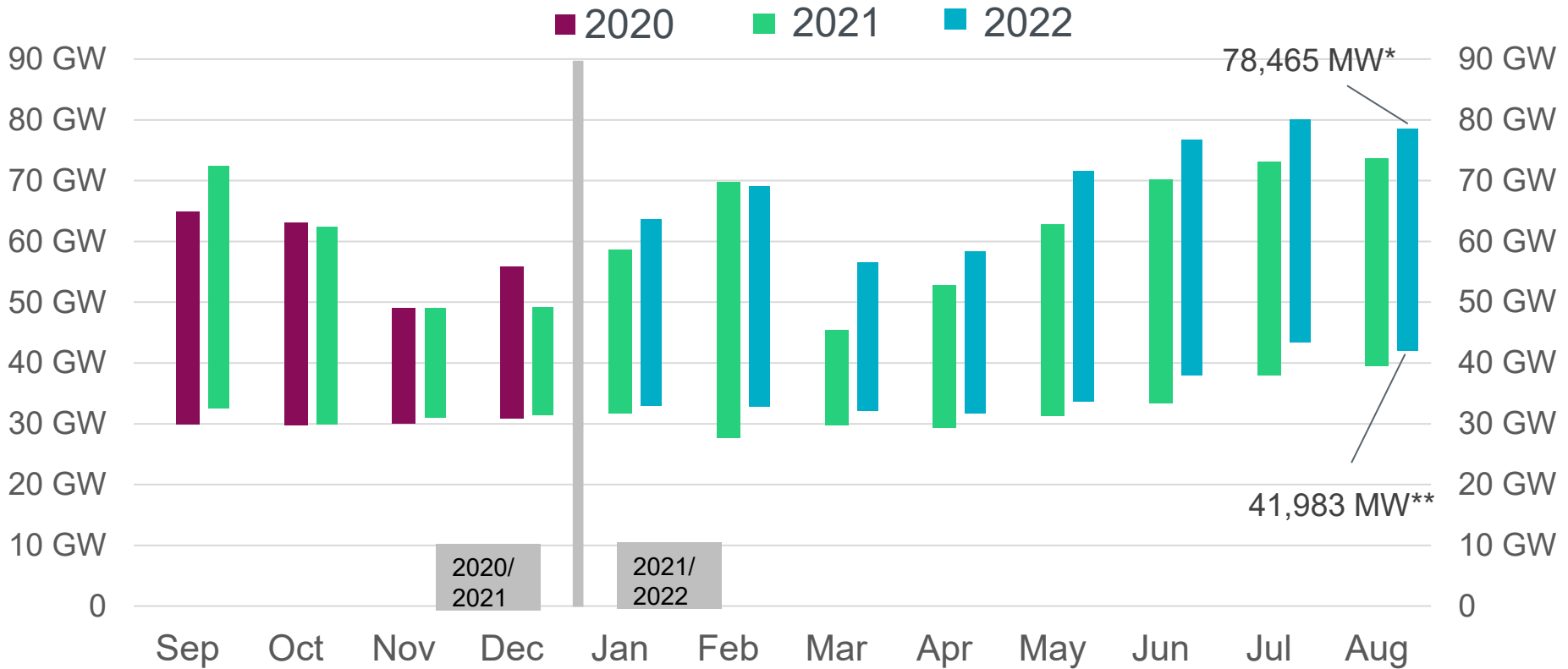
Vice President, System Operations

Reliability and Markets Committee Meeting

ERCOT Public

October 17, 2022

ERCOT set a new all-time August demand record of 78,465 MW* on 8/2/2022; this was 3,645 MW more than the previous record of 74,820 MW set on 8/12/2019



*Based on the maximum net system hourly value from August release of Demand and Energy 2022 report.

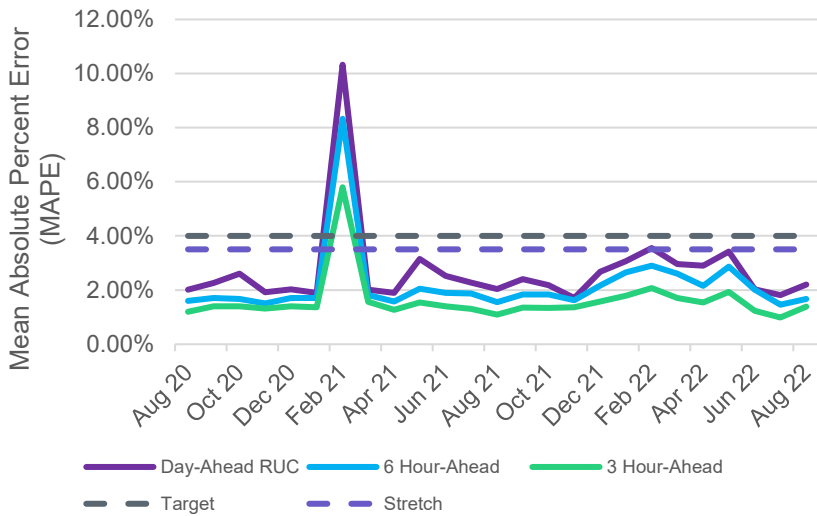
**Based on the minimum net system 15-minute interval value from August release of Demand and Energy 2022 report.

Data for latest two months are based on preliminary settlements.

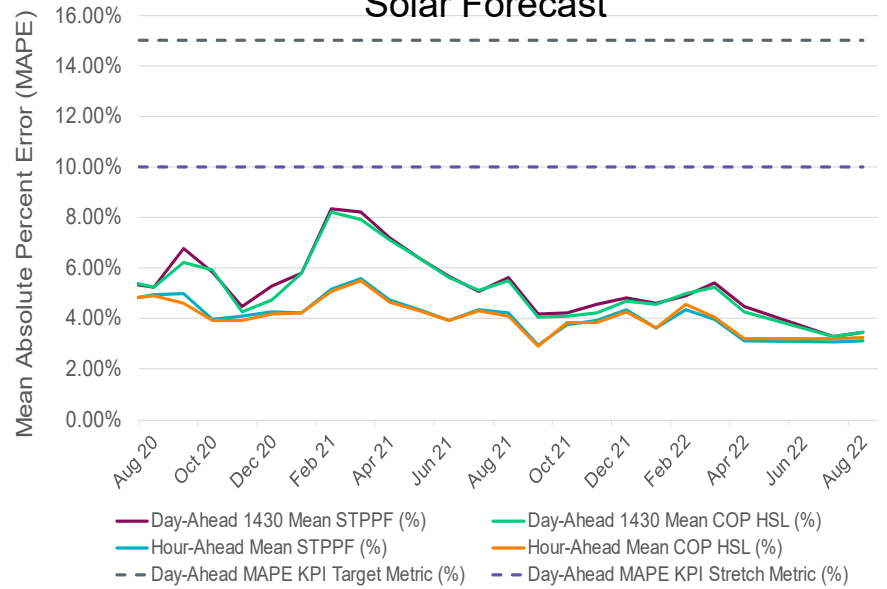


Forecast Performance

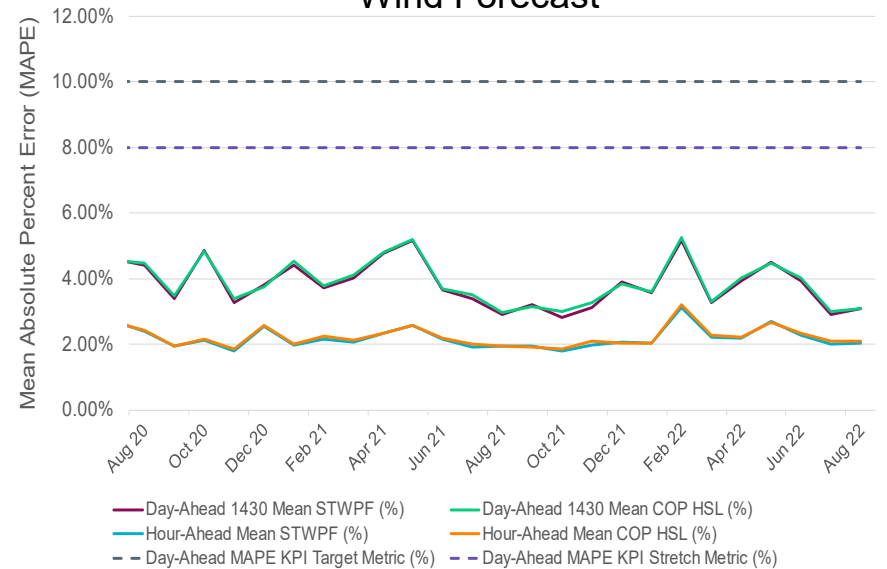
Mid-Term Load Forecast



Solar Forecast

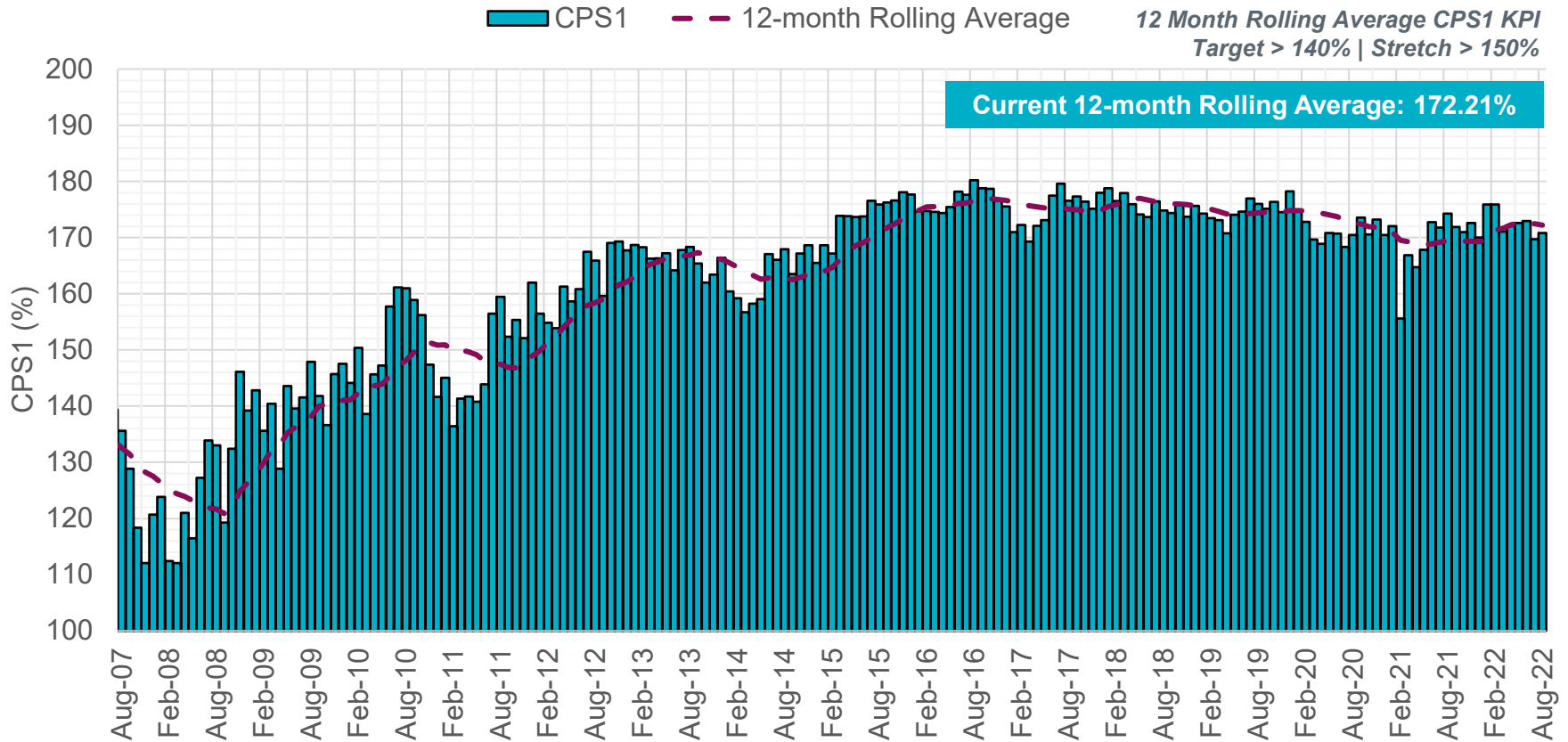


Wind Forecast



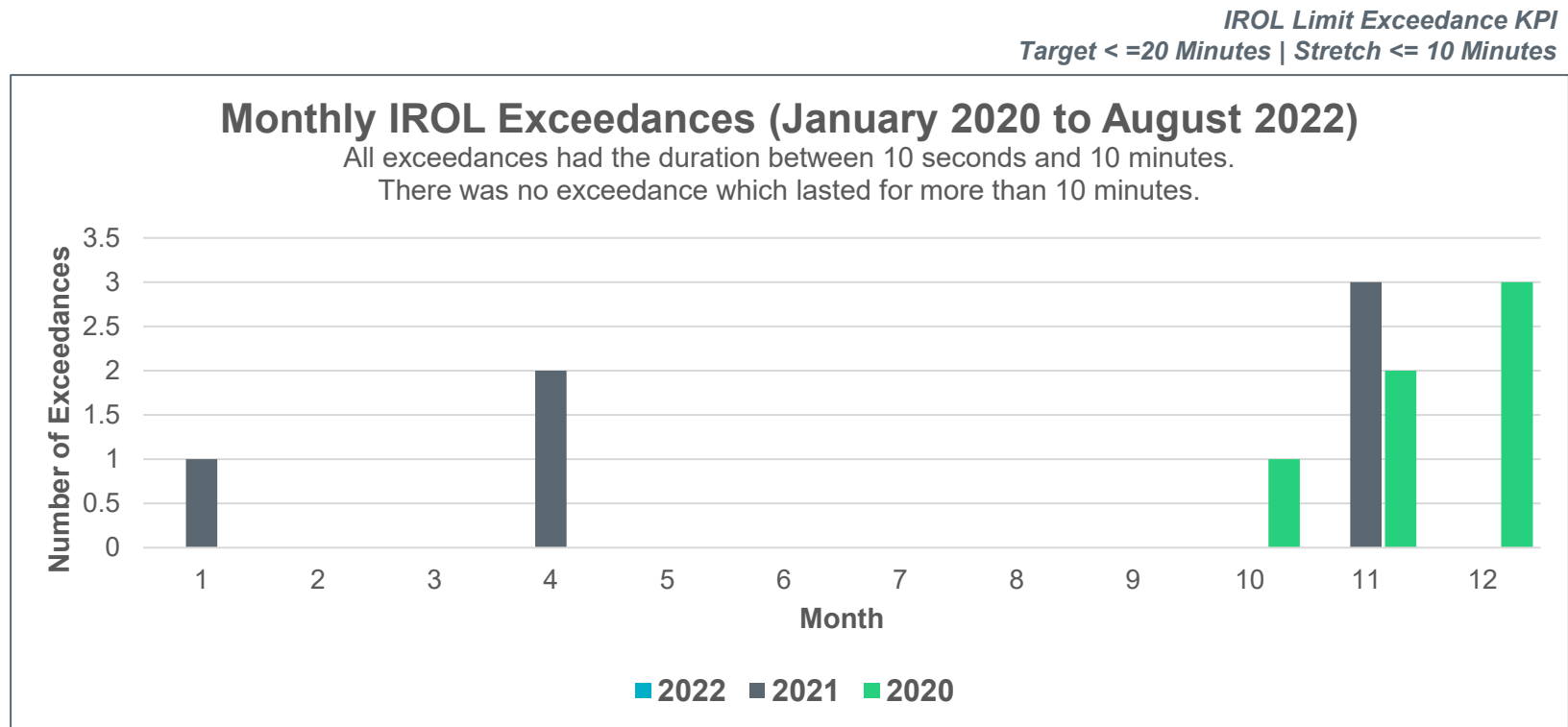
Frequency Control - 12-Month Rolling Average CPS1

- Control Performance Standard 1 (CPS-1) is a measure of the frequency control on a power system, pursuant to NERC Standard BAL-001. The 12-month rolling-average of this measure is required to stay above 100%.



Transmission Control - IROL Exceedances

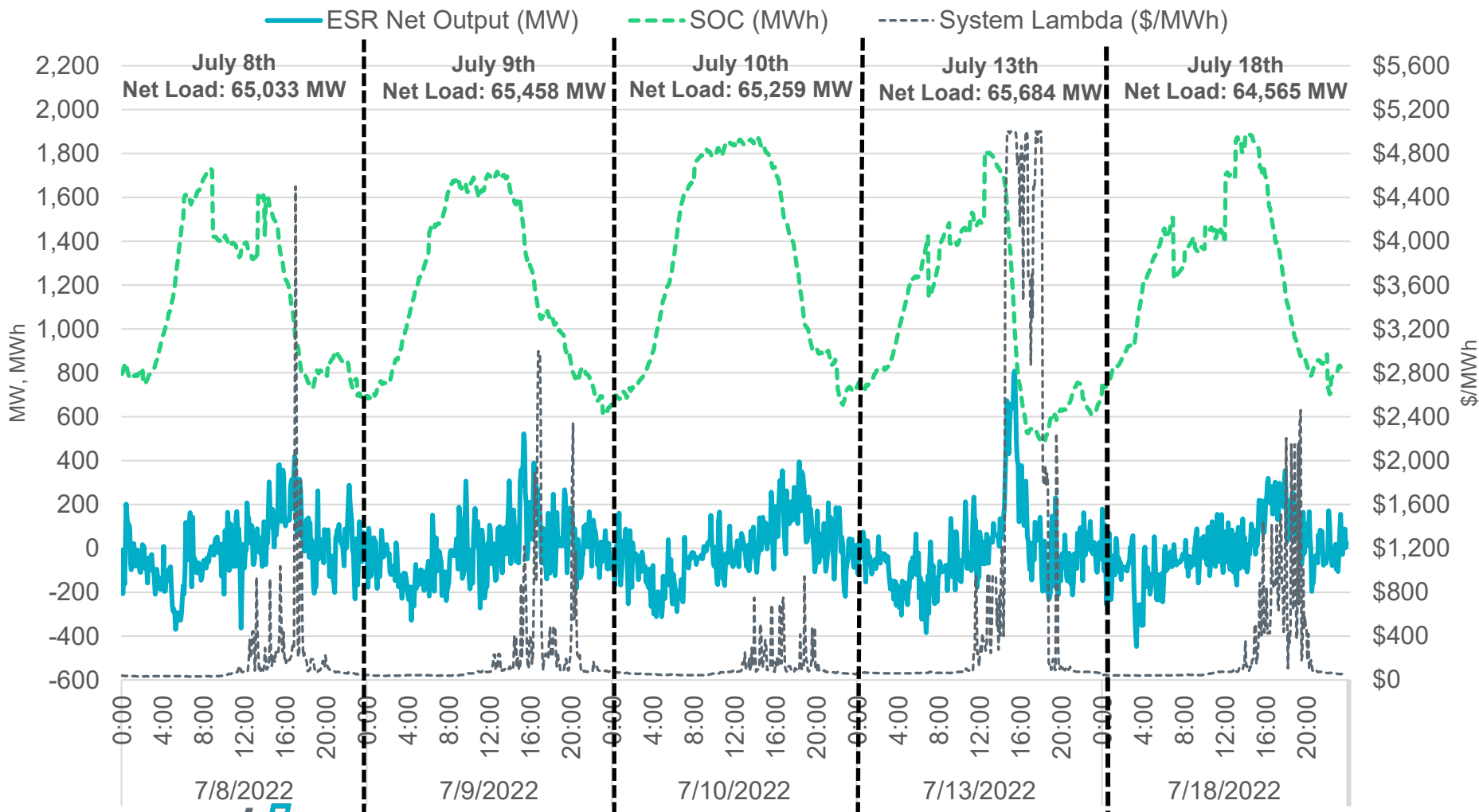
- An Interconnection Reliability Operating Limit (IROL) is a transfer limit on the transmission system that, if exceeded, risks a widespread disruption. To reduce this risk, an IROL exceedance must be mitigated within 30 minutes, per NERC Standard IRO-009. Last IROL exceedance occurred in November 2021.



Special Topics

Energy Storage Resource (ESR) Performance on Top 5 Net Load Days in Summer 2022

Energy Storage Resource Net Output on July 8th-10th, 13th, and 18th 2022



Physical Responsive Capacity (PRC) with and without NPPR 987

- PRC is a representation of the total amount of frequency responsive Resource capability On-Line in Real-Time. During Summer 2022, there were several days where offline Non-Spinning Reserves were deployed due to PRC dropping below deployment trigger of 3,200 MW.
- Sufficient capacity was online to meet demand but the distribution of the capacity among units resulted in the online reserves being on a few units.
 - Current PRC caps maximum contribution from any gen unit to 20% of its capability.
 - Implementation of NPPR 987 in mid-October will update the PRC calculation to track additional frequency responsive headroom from ESRs. This could include up to 100% of their capability based on their verified droop test.

