



## **Item 7: Independent Market Monitor (IMM) Report**

*Carrie Bivens*

VP, ERCOT IMM Director

[cbivens@potomaceconomics.com](mailto:cbivens@potomaceconomics.com)

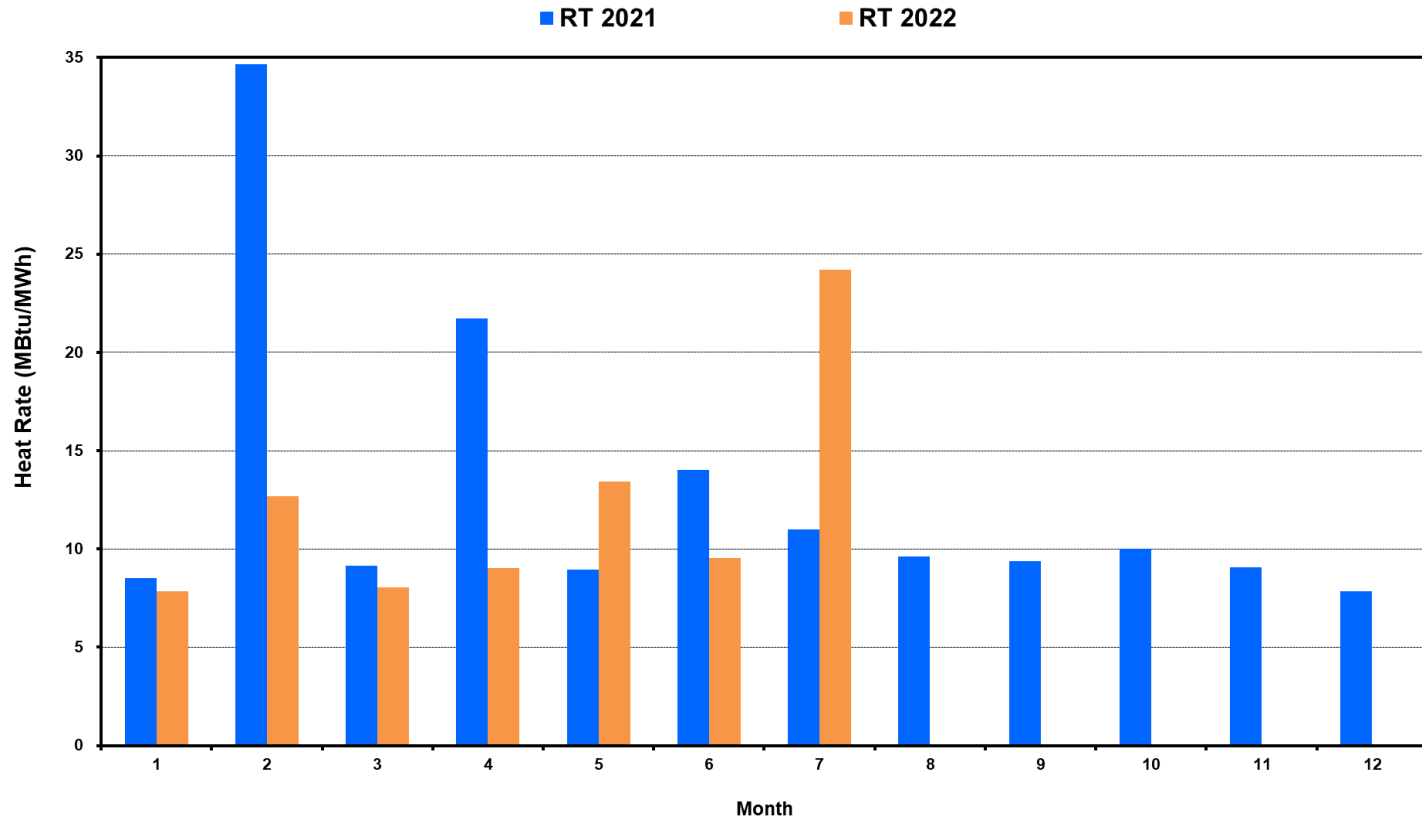
Board of Directors Meeting

ERCOT Public

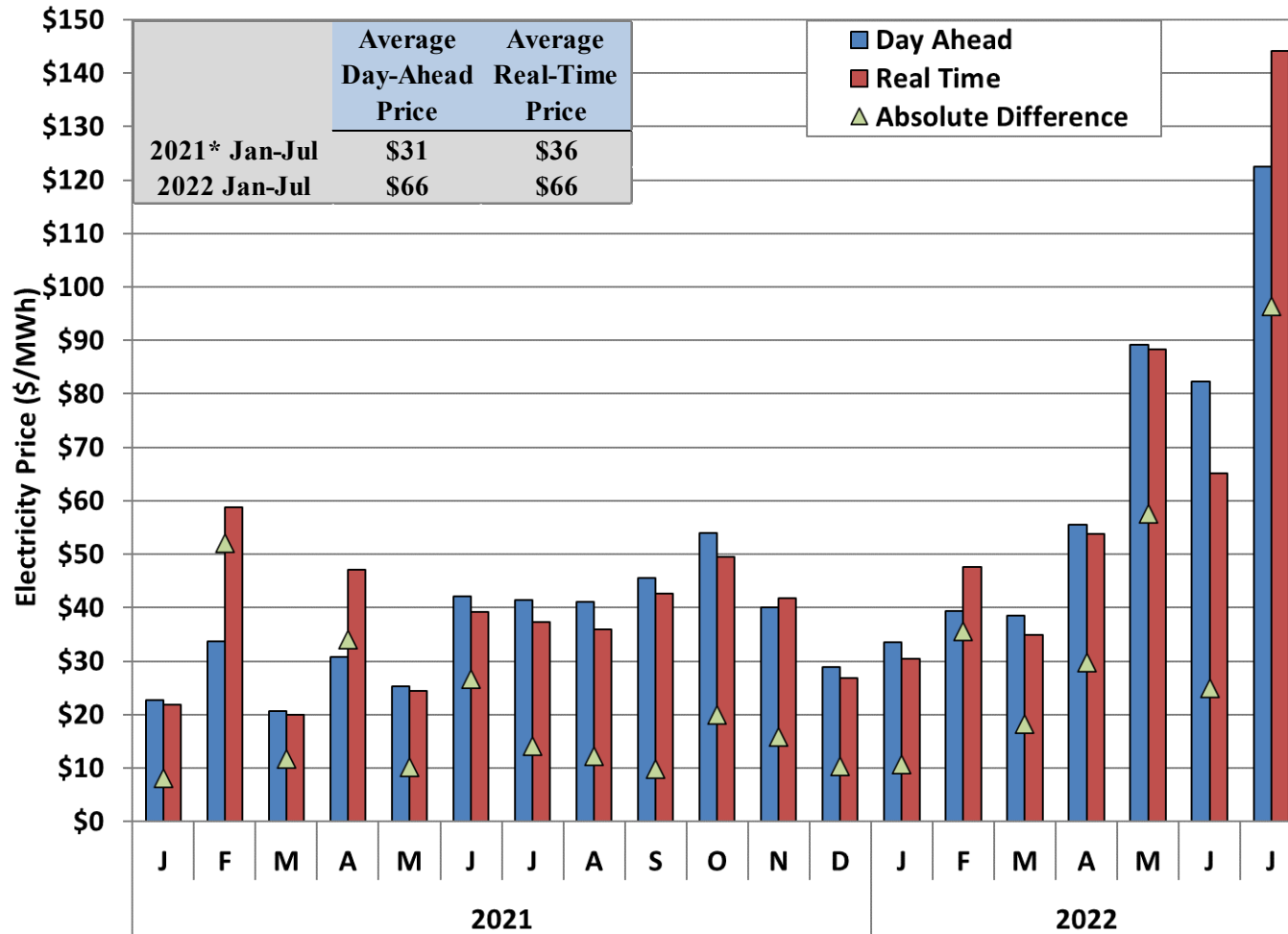
August 16, 2022

# 2022 YTD Real-Time Energy Prices

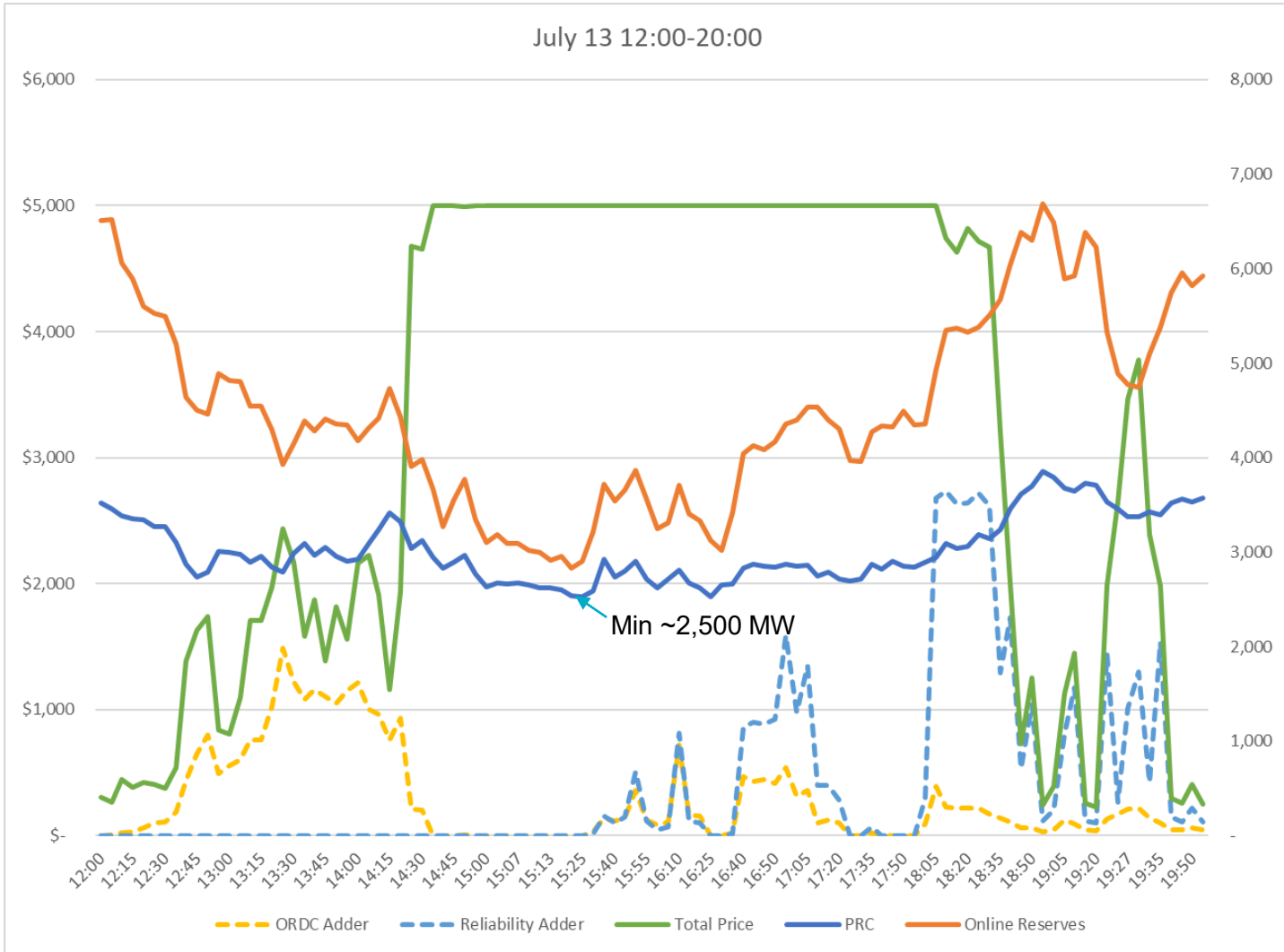
- Implied heat rates in real-time up for May and July
- Peaker Net Margin stands at \$122k as of July 31 (greater than Cost of New Entry value of \$105k)



# 2022 YTD DA/RT Price Difference on Average

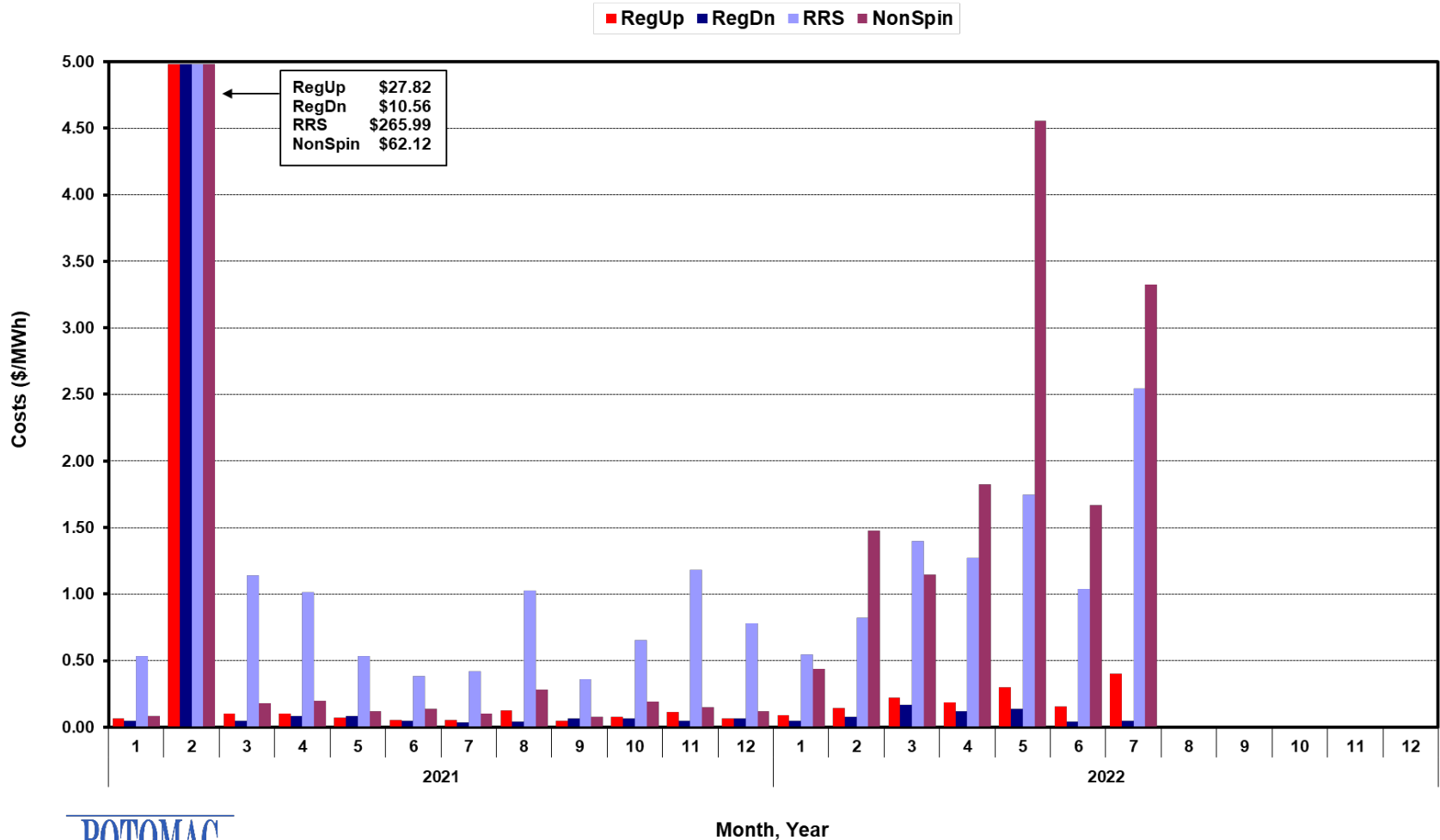


# Highest priced day July 13 – Prices and Reserves



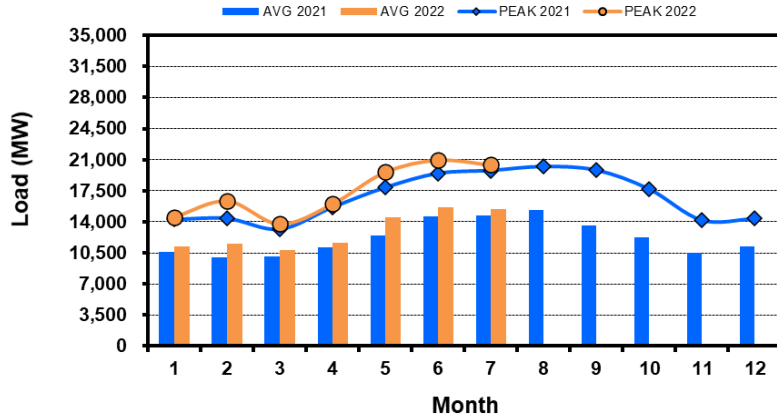
# Ancillary Services

## Average A/S Cost per MWh Load

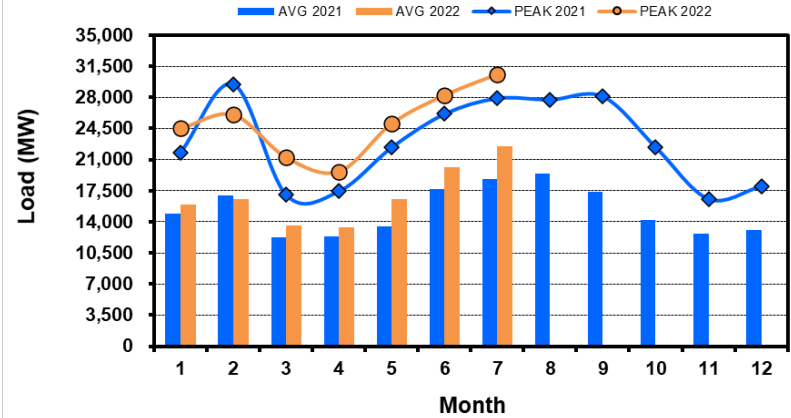


# Load Trends

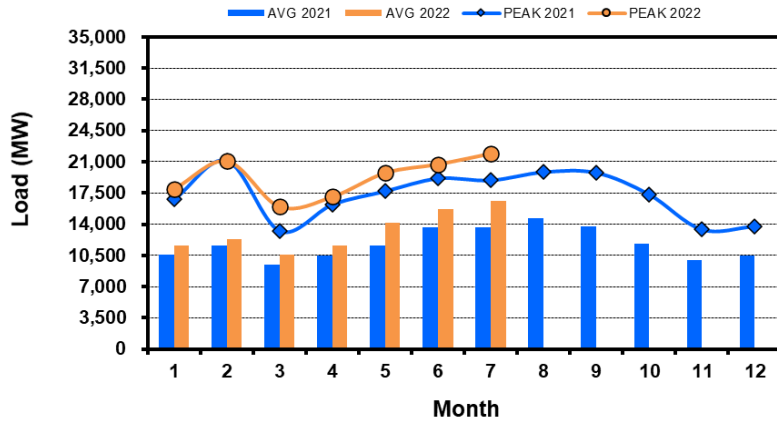
### Houston Zone



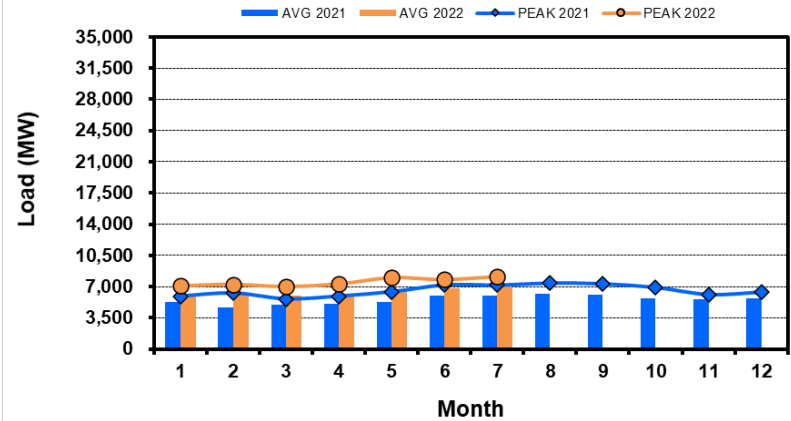
### North Zone



### South Zone



### West Zone



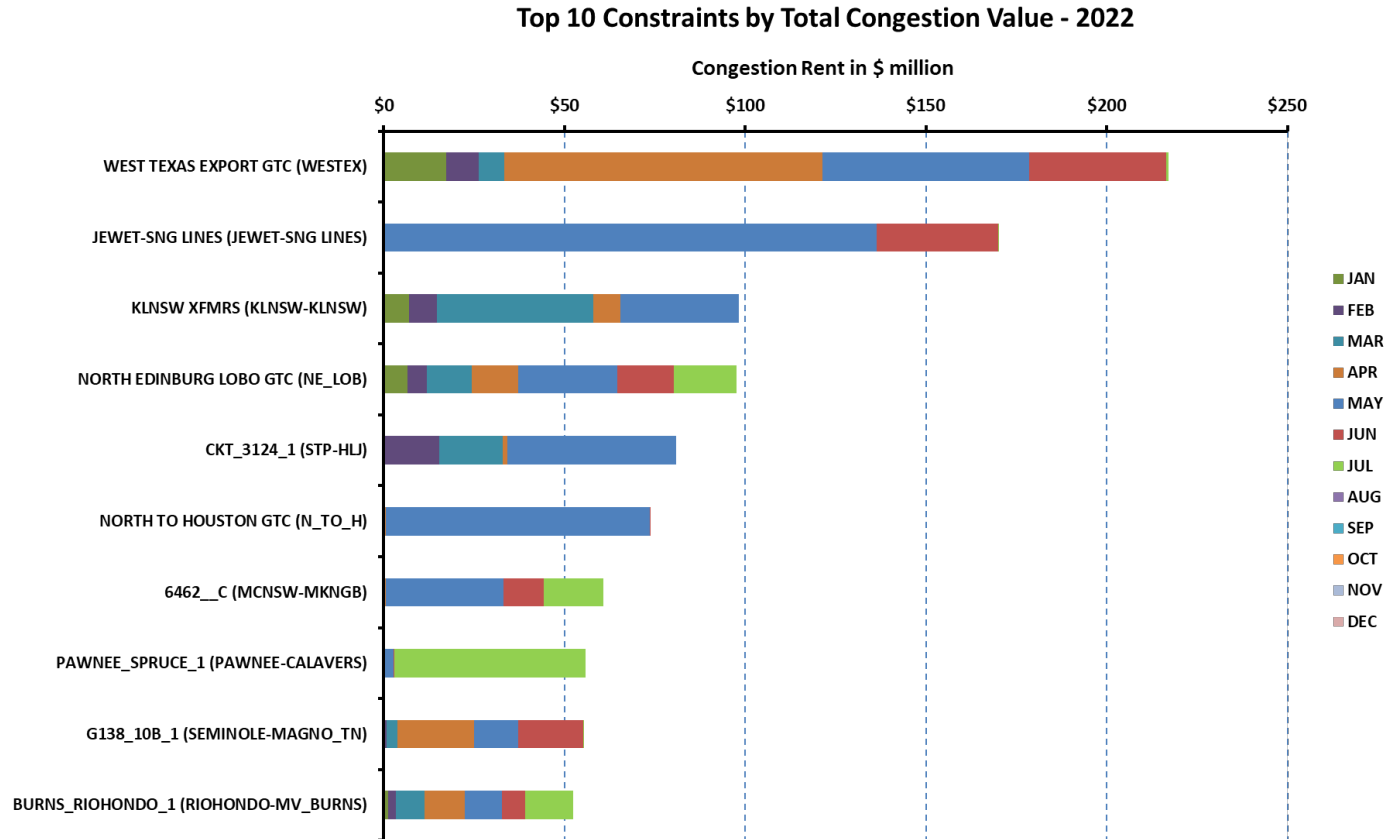
# Transmission Congestion

Real-time congestion costs stand at \$2.1B as of end of July

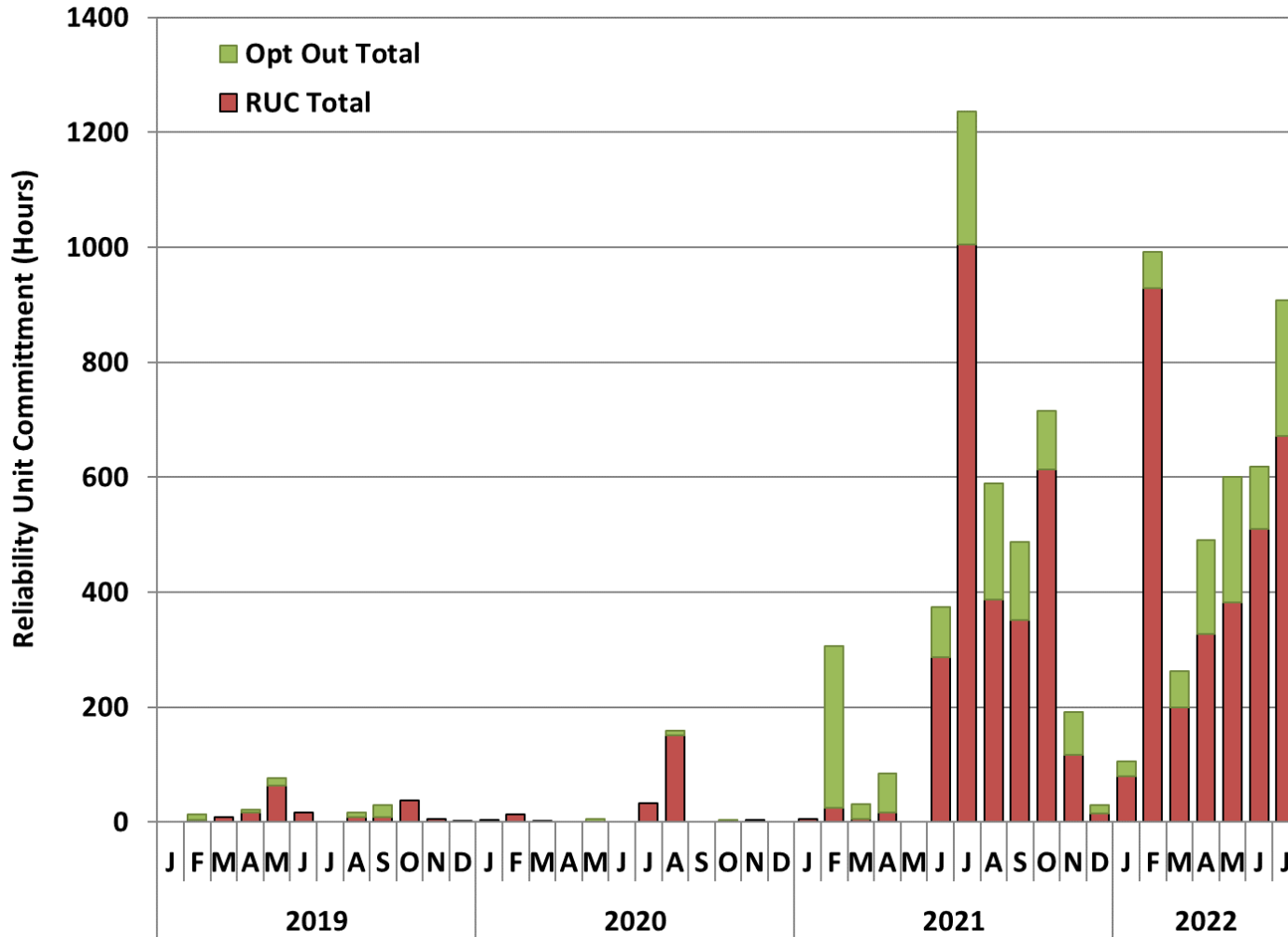
- Was \$2.1B for all of 2021

MONTH	RENT_TOTAL
1	\$ 109
2	\$ 131
3	\$ 238
4	\$ 382
5	\$ 701
6	\$ 251
7	\$ 295
<b>SUM-TOTAL</b>	<b>\$ 2,107</b>
<b>(unit: \$ million)</b>	

Name of Constraints



# Reliability Unit Commitment





## 2022 ORDC shift

- Operating Reserve Demand Curve (ORDC)
  - Minimum contingency level increased to 3,000 MW (from 2,000 MW) effective January 1, 2022
    - Impact of this shift on energy costs was approx. \$1B as of July 31
    - Total ORDC adder impact on energy costs for the same time period was \$2B