



Item 9.2: System Operations Update

Dan Woodfin

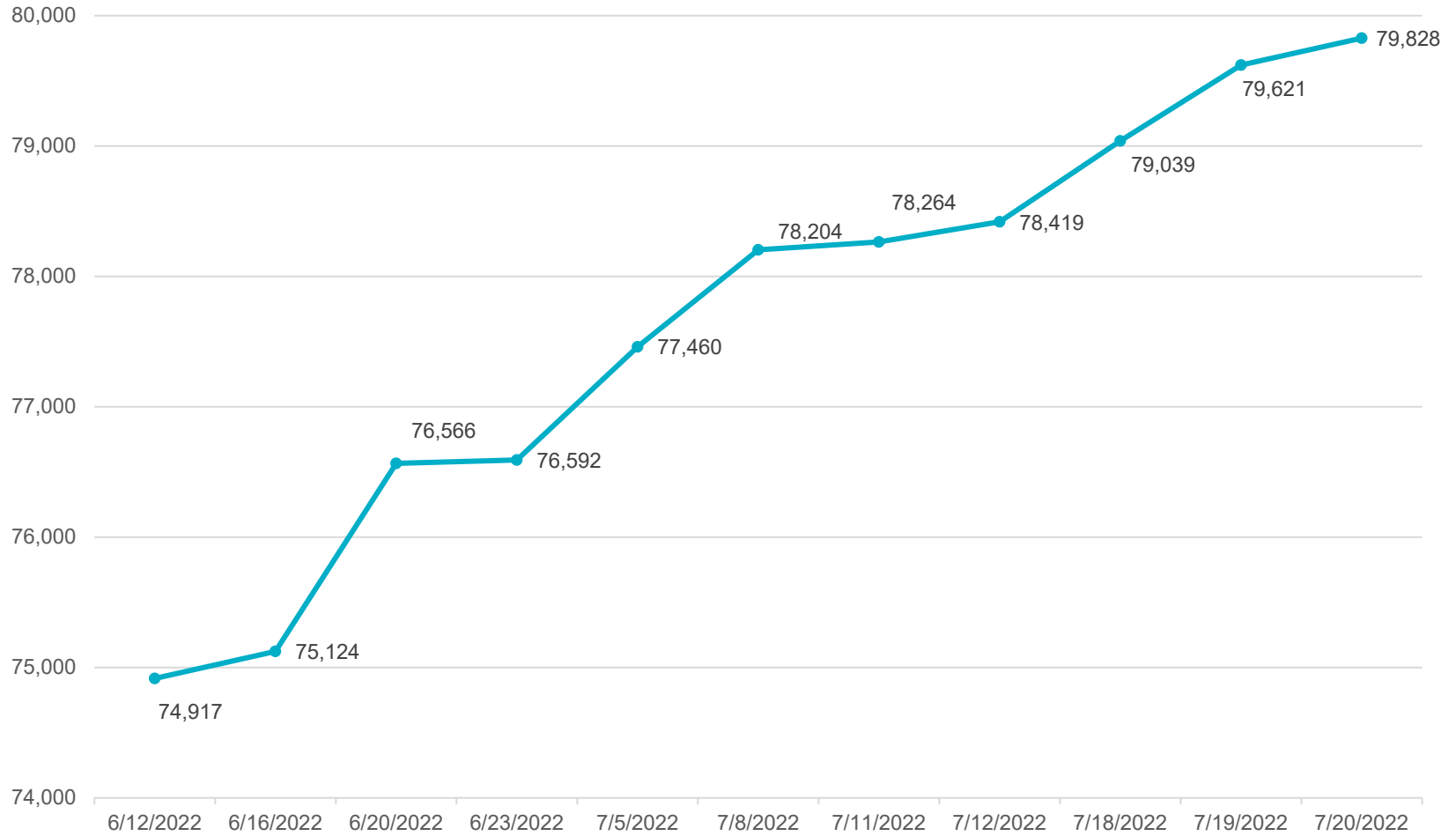
Vice President, System Operations

Reliability and Markets Committee Meeting

ERCOT Public

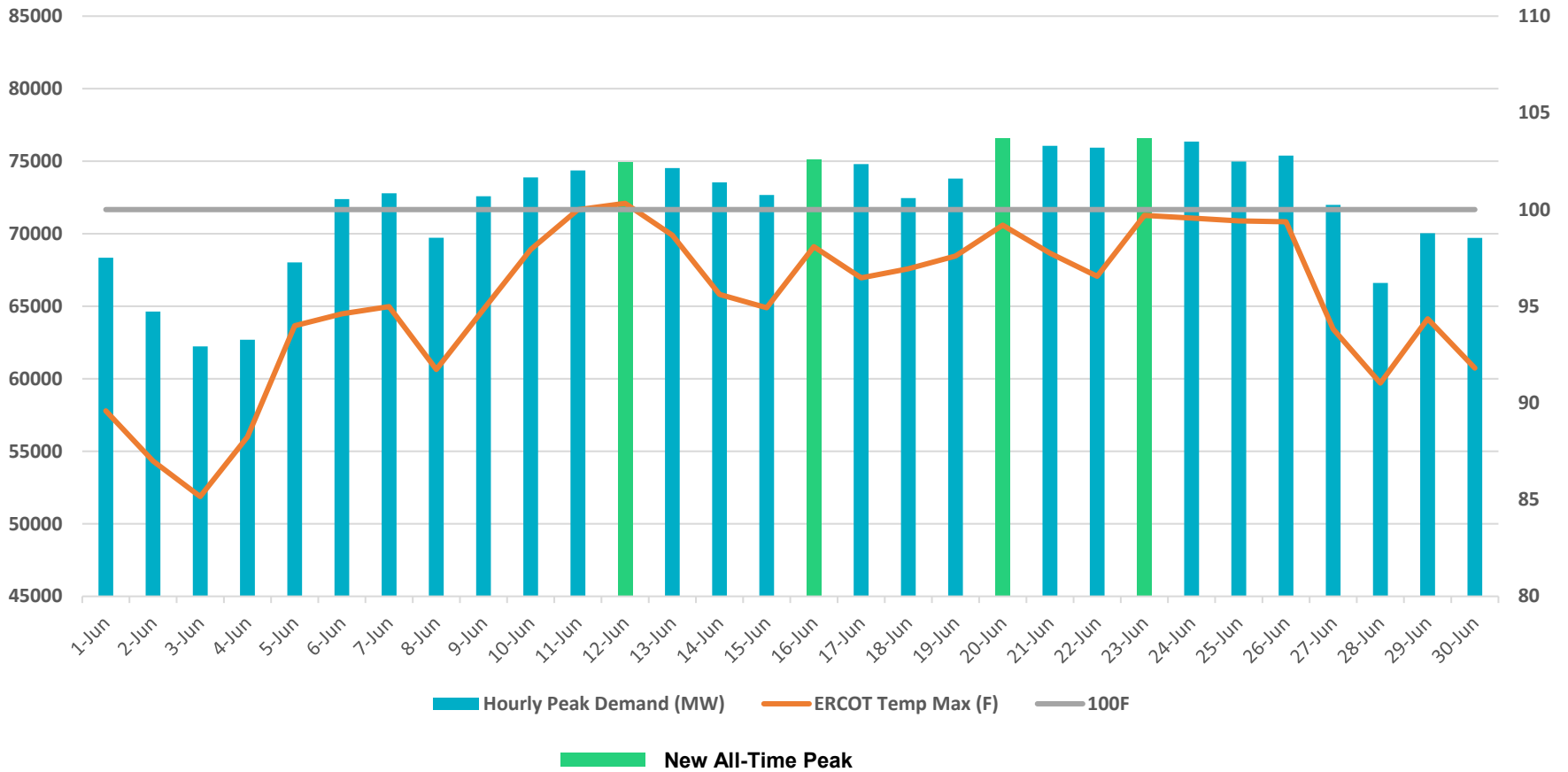
August 15, 2022

All-Time Peak Demands



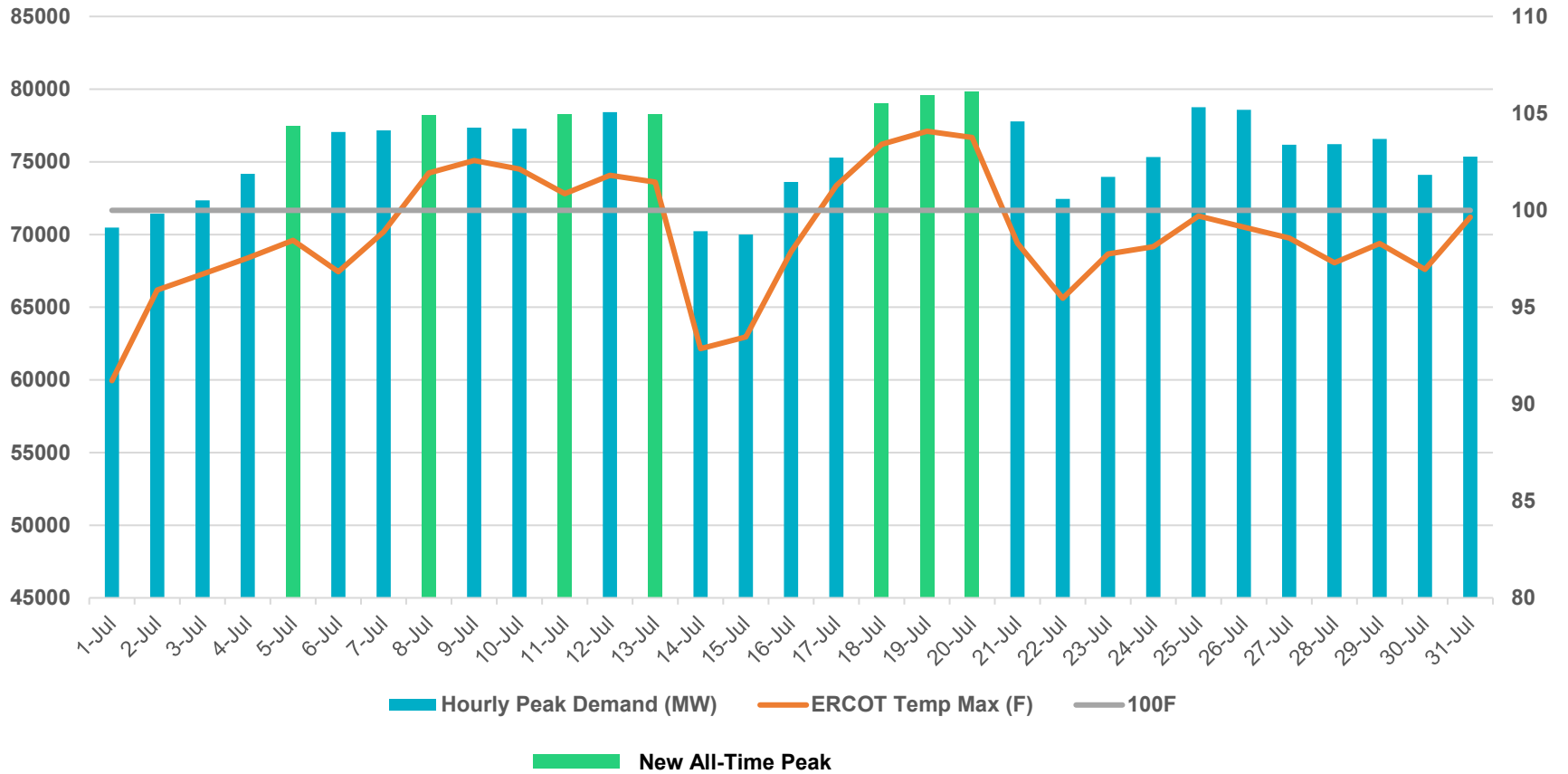
Max Temperature vs. Peak Demand - June

June ERCOT Weighted Daily Max Temperature vs. Hourly Peak Demand



Max Temperature vs. Peak Demand - July

July ERCOT Weighted Daily Max Temperature vs. Hourly Peak Demand

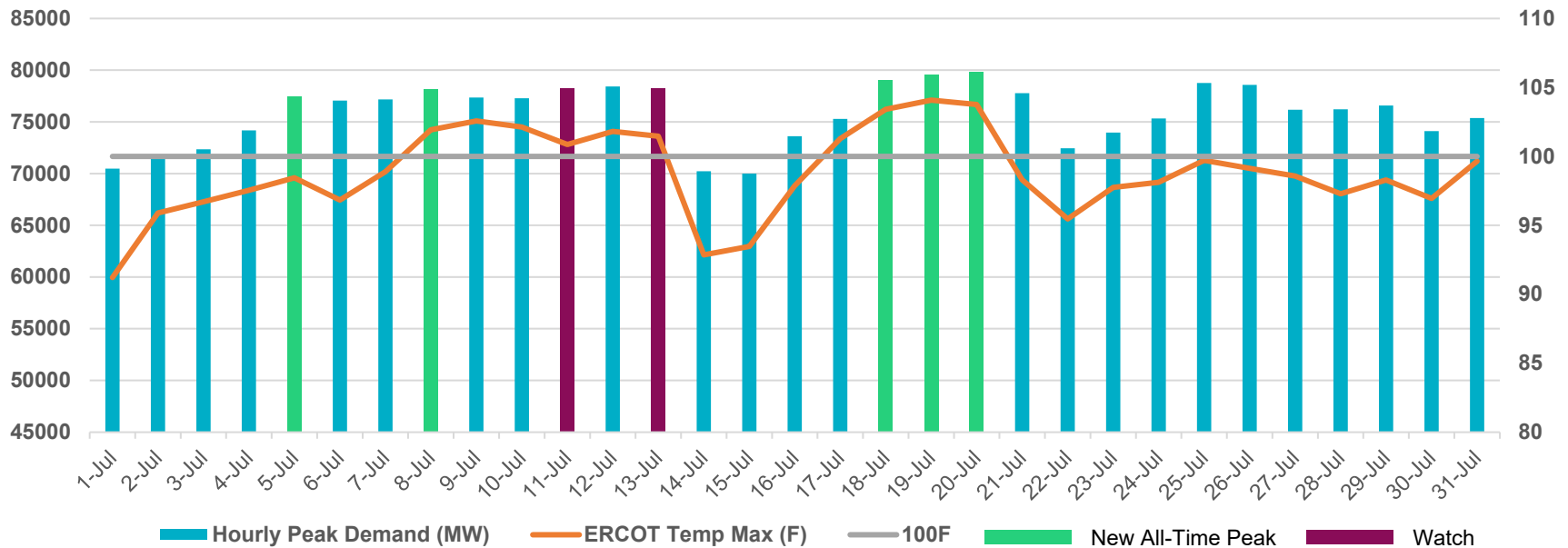


Preliminary Estimate of Aggregate Demand Response (DR)

Date	7/12	7/13	7/18	7/19	7/20
Aggregate DR Impact	2300	2700	2400	2750	2750

- Estimate based on comparison of load shape to non-DR day load shape and load forecast model backcast
- This DR would include 4CP, price response, other load management programs, voluntary conservation, deployment of ERS and distribution voltage reduction

Issued Watch for 2 Days



- Issued Watch due to potential for insufficient reserves for 7/11 and for 7/13 and request for voluntary conservation by the public
- Issued Advisory for Physical Responsive Reserves <3000MW on 7/13 and deployed Emergency Response Service and Distribution Load Reduction
- Did not need to declare an emergency either day or to order rotating outages



Demand, Wind, Solar and Outages at Instantaneous Peak 07/11 to 07/13

12,000

10,000

85,000

Capacity & Demand (MW)

Wind, Solar, Outages (MW)

80,000

75,000

70,000

65,000

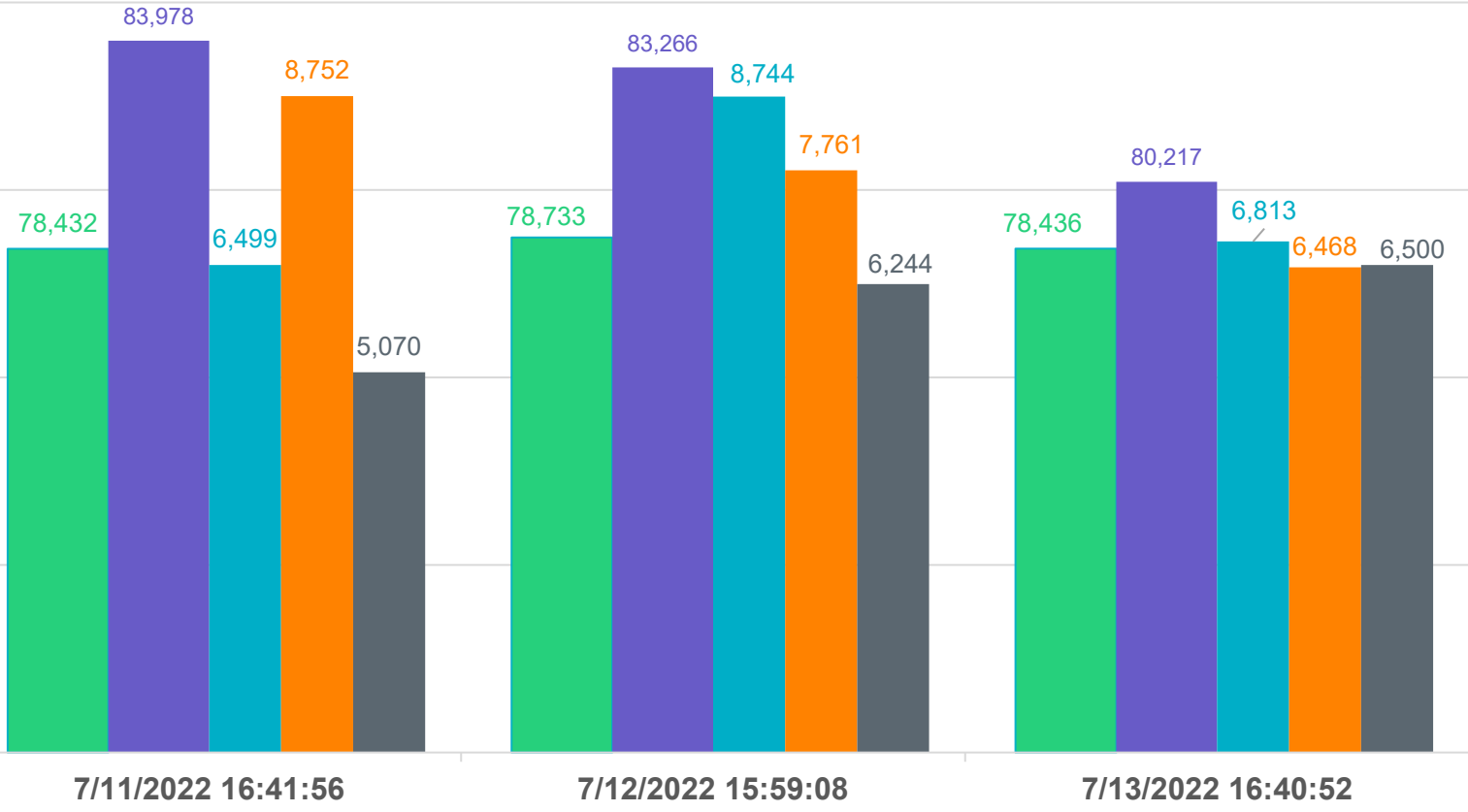
8,000

6,000

4,000

2,000

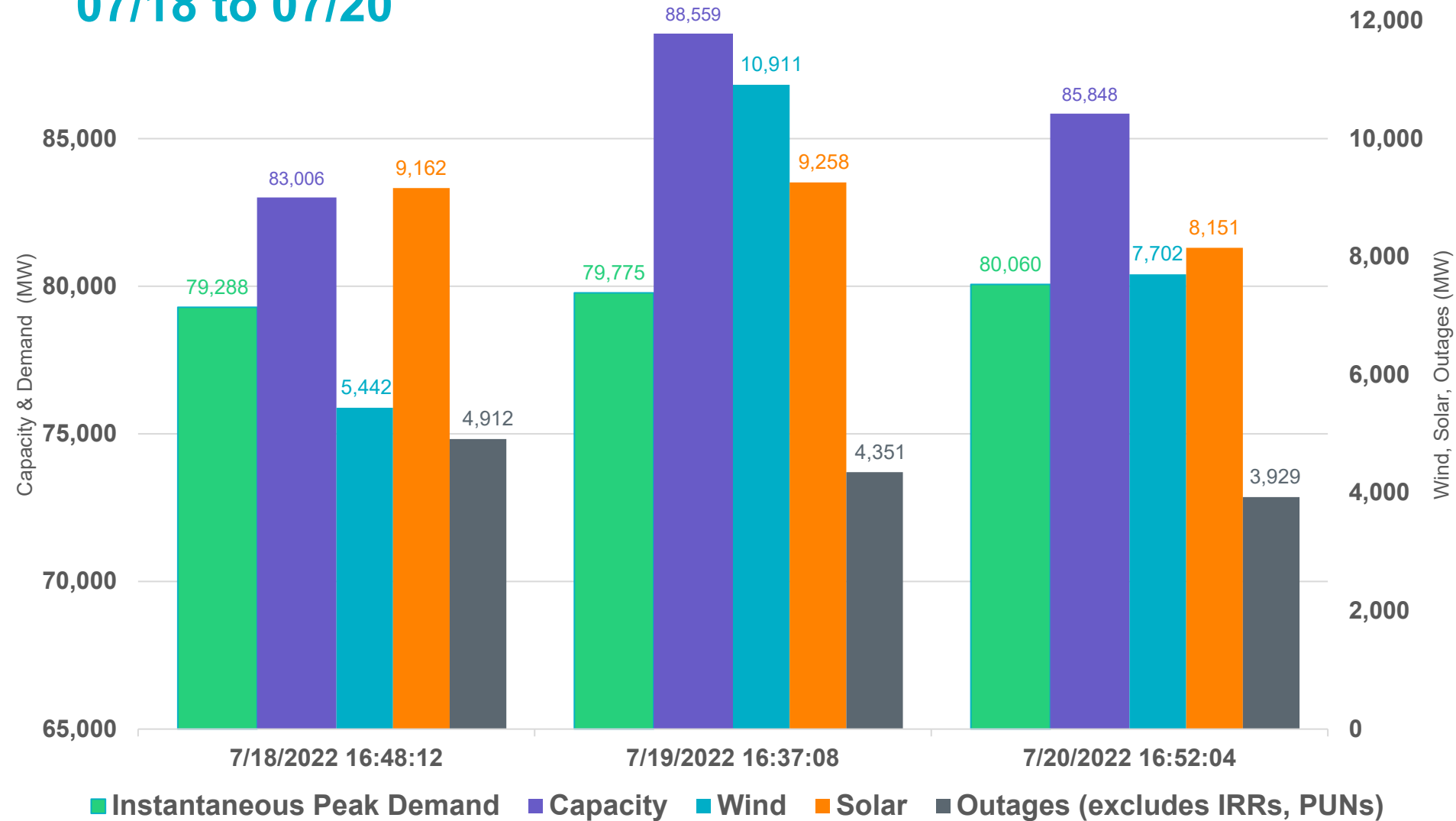
0



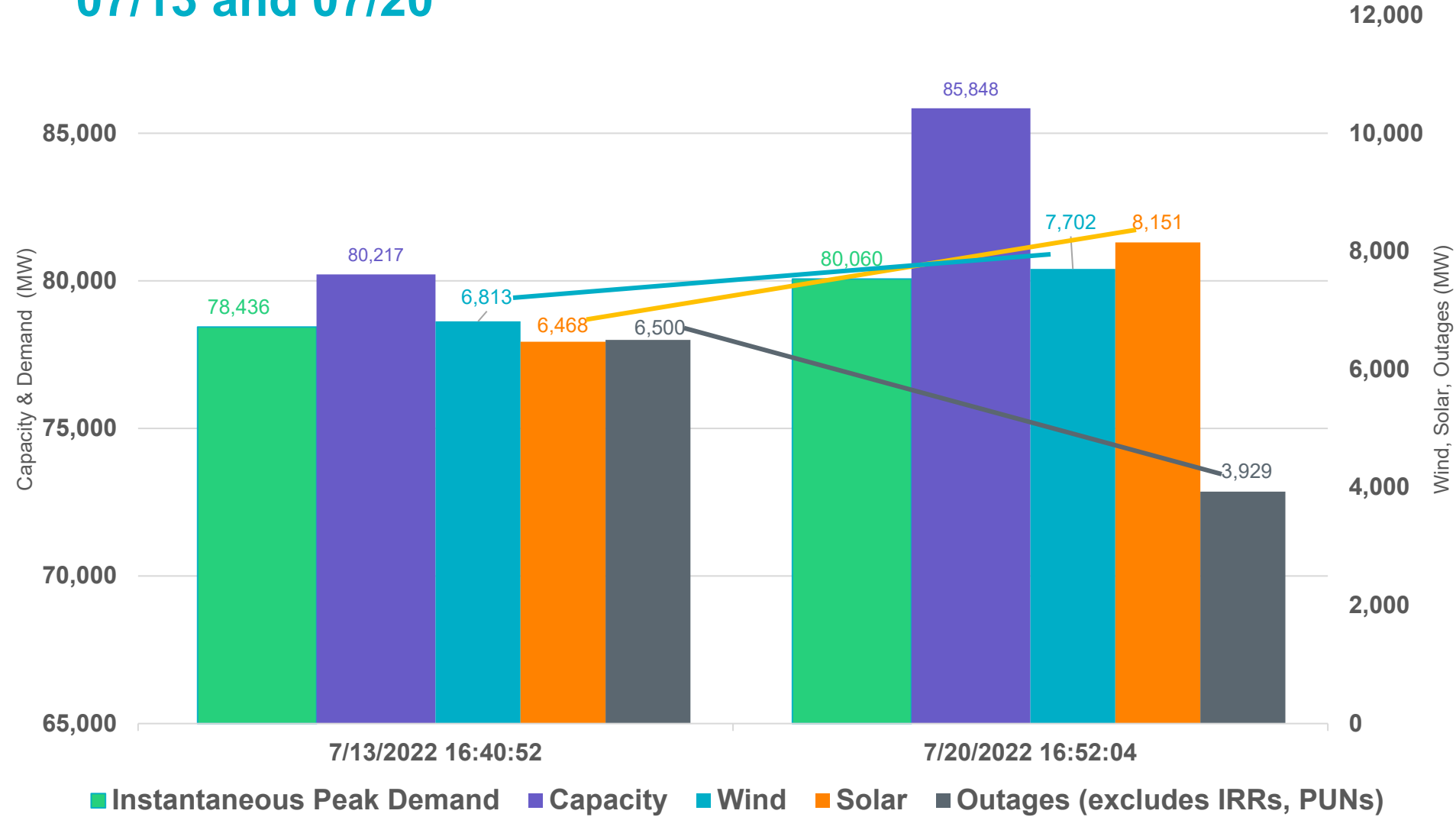
■ Instantaneous Peak Demand ■ Capacity ■ Wind ■ Solar ■ Outages (excludes IRRs, PUNs)



Demand, Wind, Solar and Outages at Instantaneous Peak 07/18 to 07/20



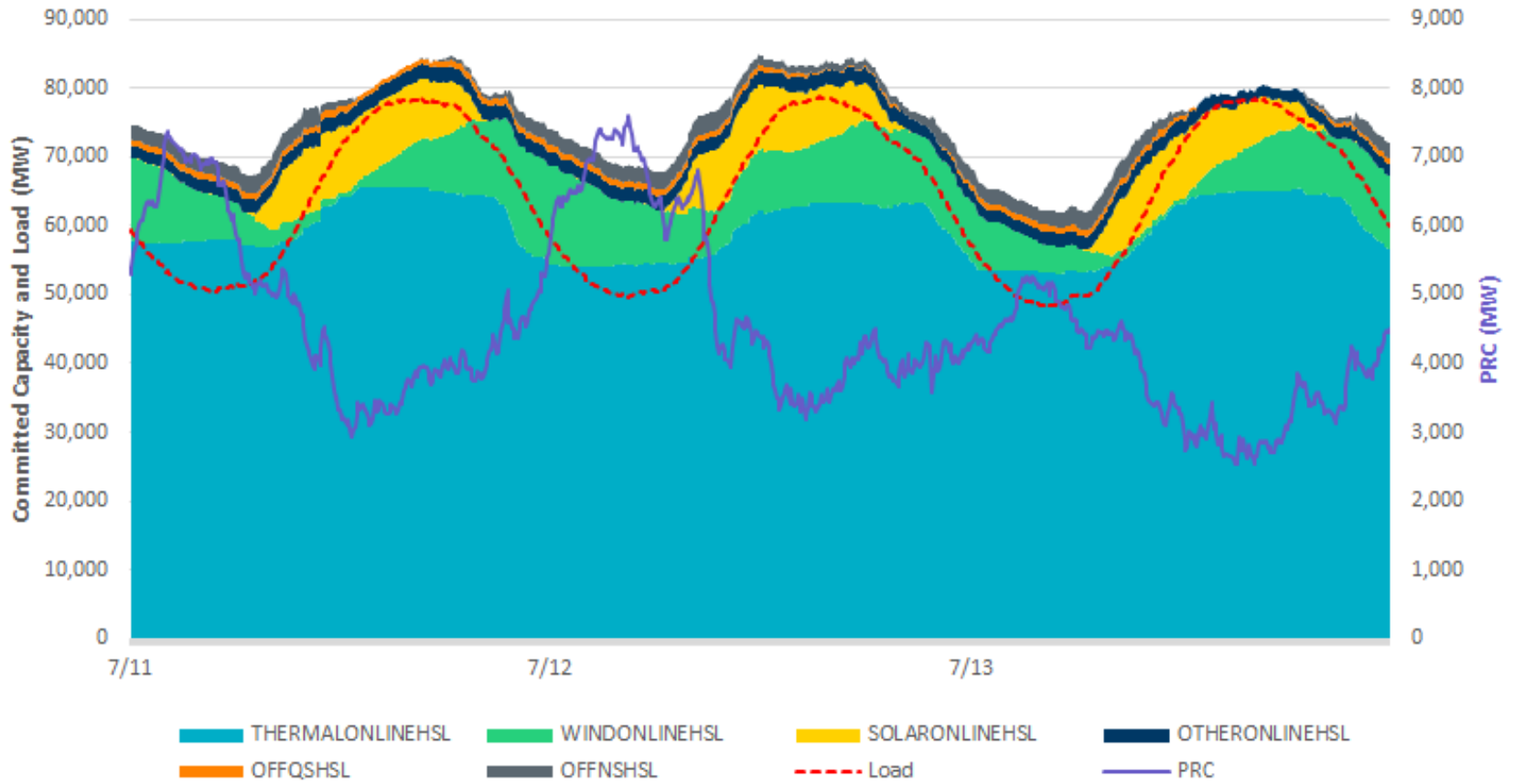
Demand, Wind, Solar and Outages at Instantaneous Peak 07/13 and 07/20



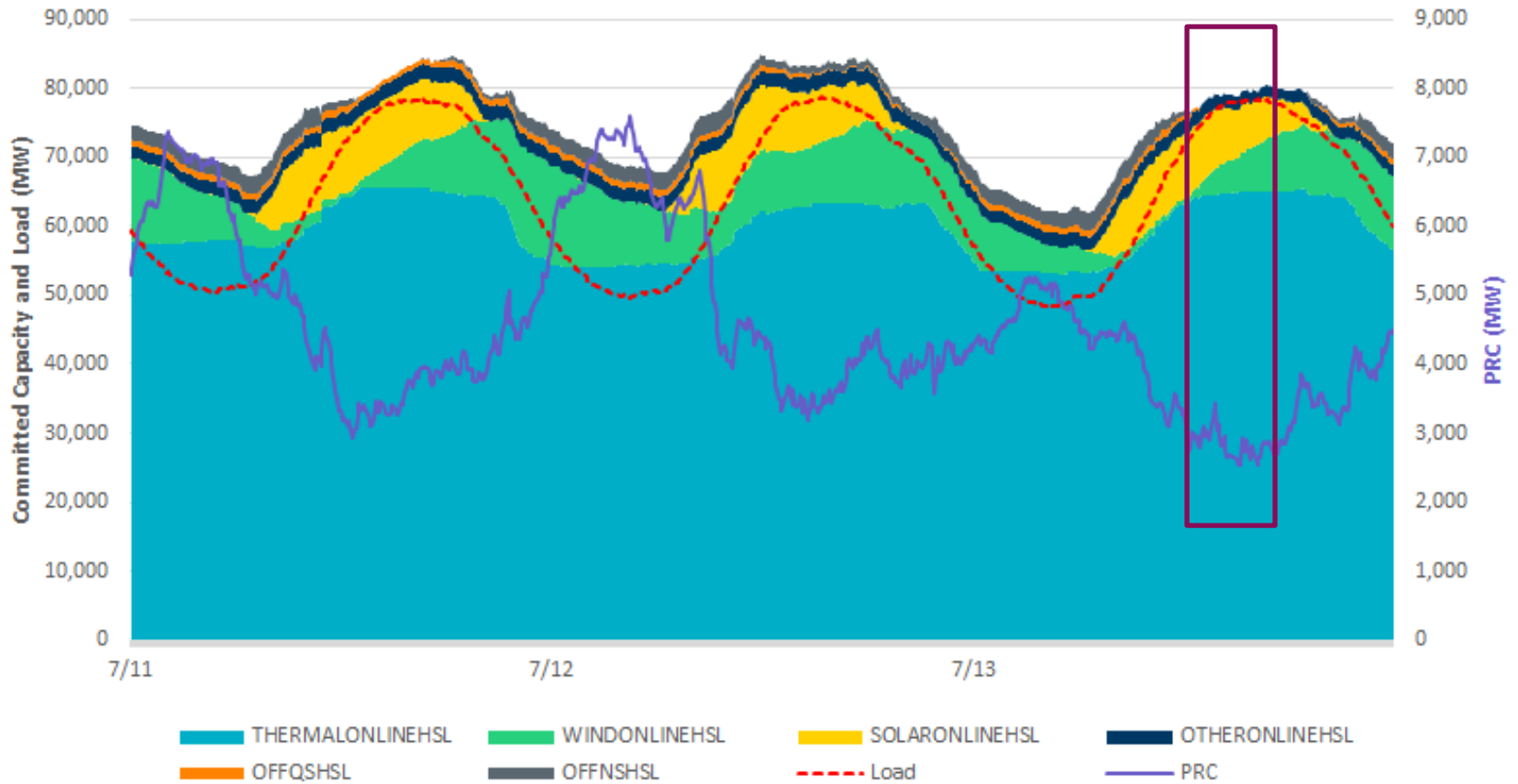
■ Instantaneous Peak Demand ■ Capacity ■ Wind ■ Solar ■ Outages (excludes IRRs, PUNs)



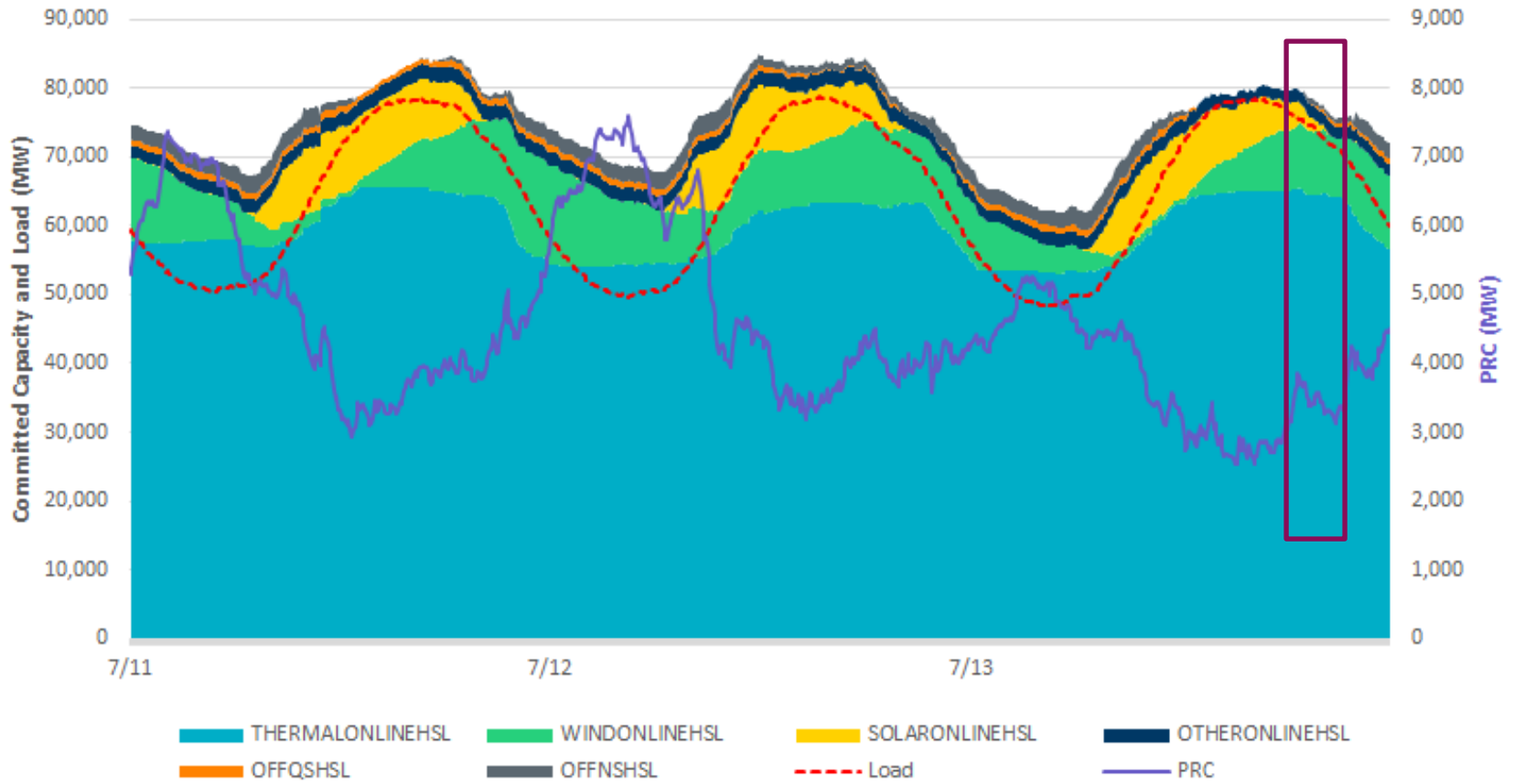
Committed Capacity



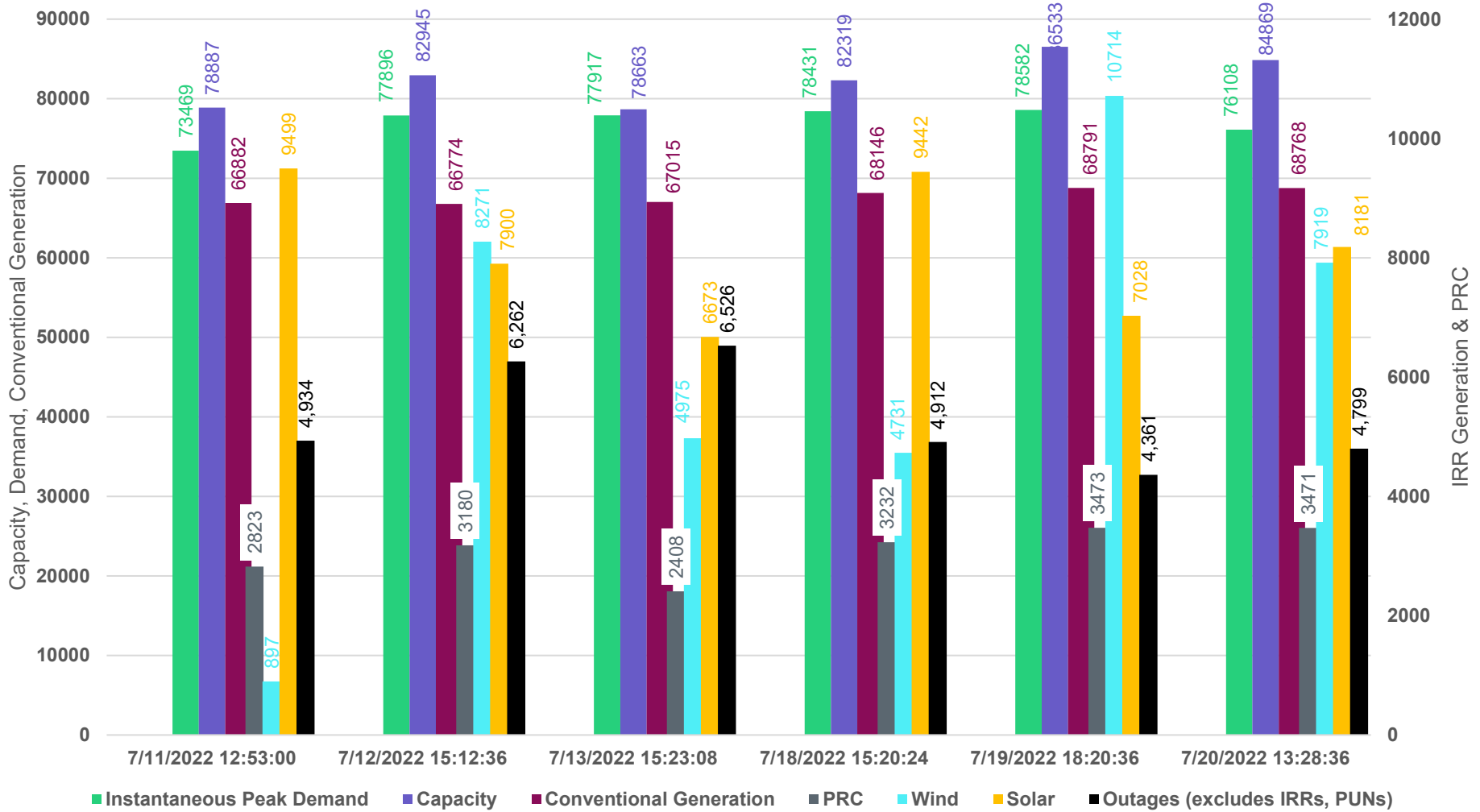
High Load/Low Wind in Early Afternoon



Sunset



Generation at Time of Lowest Reserves (PRC)



Questions?

