



2020 Benchmark GMDVA Process Update and Findings

Minnie Han
Transmission Planning Assessment

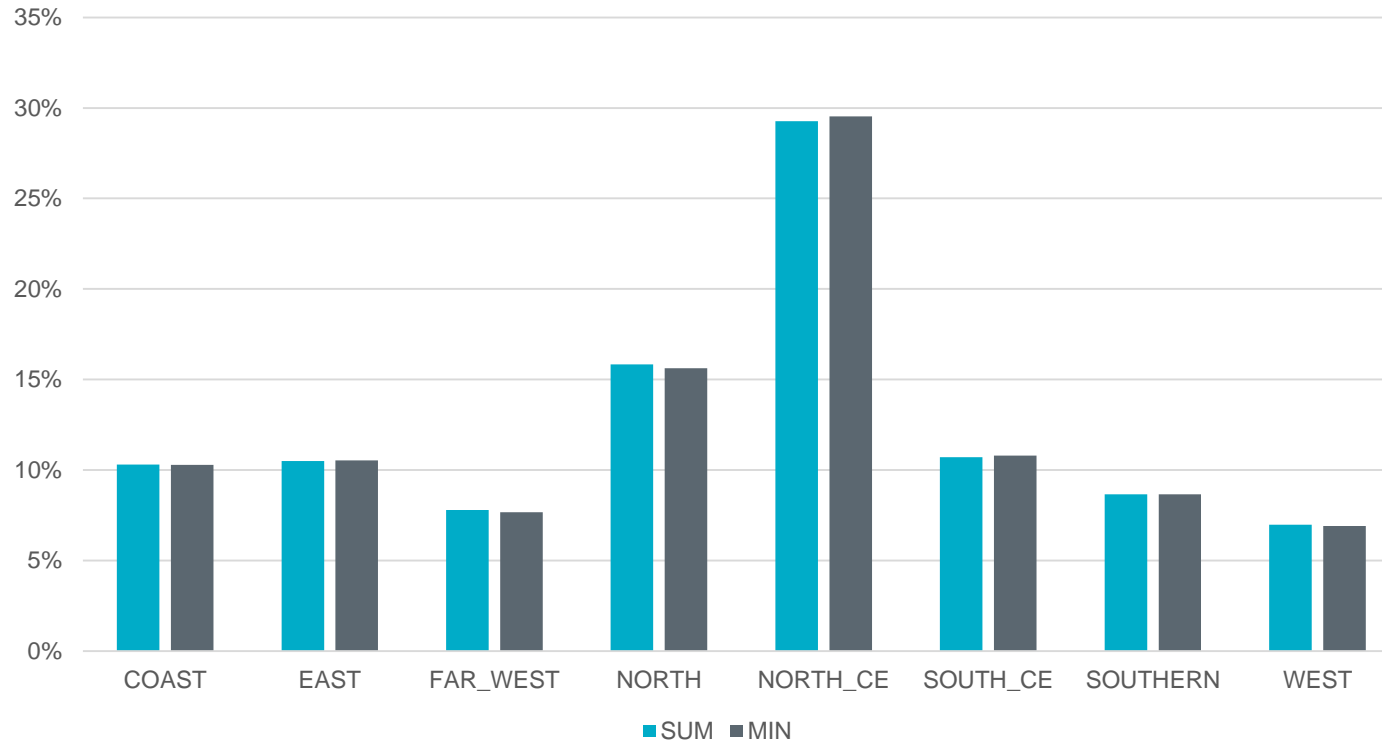
October 2020 PGDTF

Updates

- DC tie losses incorporated
- Model corrections and updates made
- One low voltage violation found in the SUM case
 - Can be resolved with tuning
- No potential cascading for BES

Reactive Losses

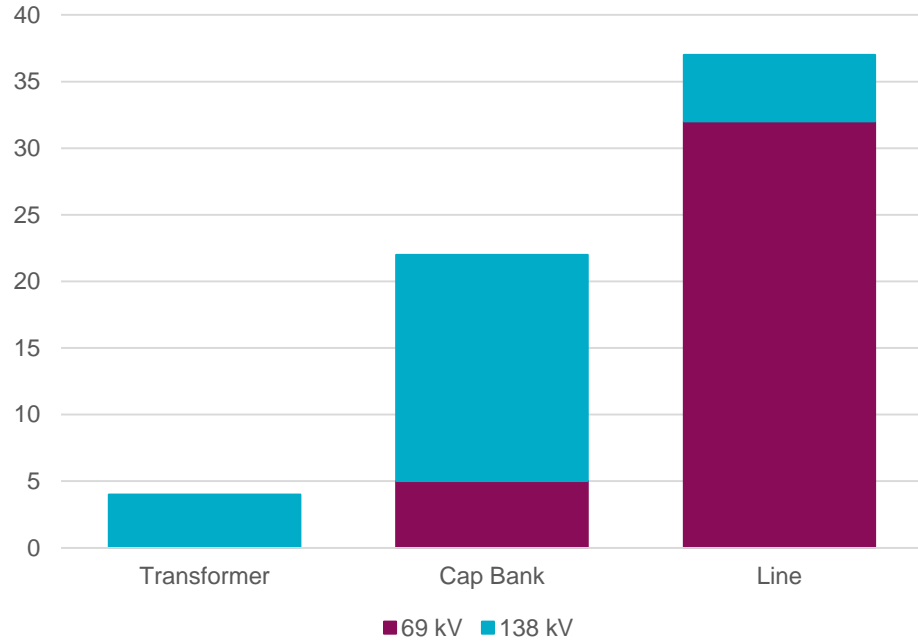
Reactive Loss Distribution Across Weather Zones



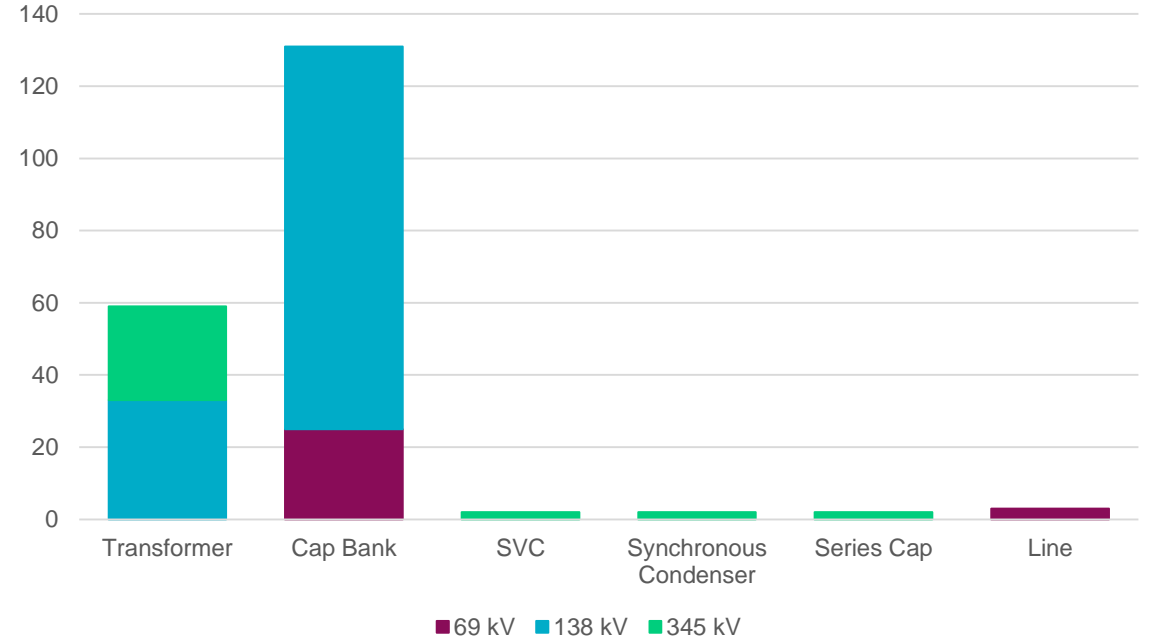
Reactive Losses Produced Across Storm Orientations	SUM	MIN
Most (Mvar)	1315	1317
Least (Mvar)	1208	1207

Outage Statistics: TSP

Category A: TSP



Category B: TSP



TSP Category A and B Outages	Category A	Category B
Shunt Capacity Lost (Mvar)	676	6783

Outage Statistics: RE

- Lost generation and shunt capacity counted instead of individual elements in Category A and B outages submitted by REs

	Category A		Category B	
RE Category A and B Outages	SUM	MIN	SUM	MIN
Generation Capacity Lost (MW)	727	87	6886	4467
Generation Reactive Capacity Lost (Mvar)	329	29	3284	1711
Shunt Capacity Lost (Mvar)	118	118	954	84



Questions?

Please send any questions or comments to
GMDVA@ercot.com