



BOUNDLESS ENERGY™

BOUNDLESS ENERGY™

AEP West Texas Project Update

ERCOT RPG Meeting
September 15th 2020

BOUNDLESS ENERGY™



BOUNDLESS ENERGY™

2020 and 2021 Planned Projects

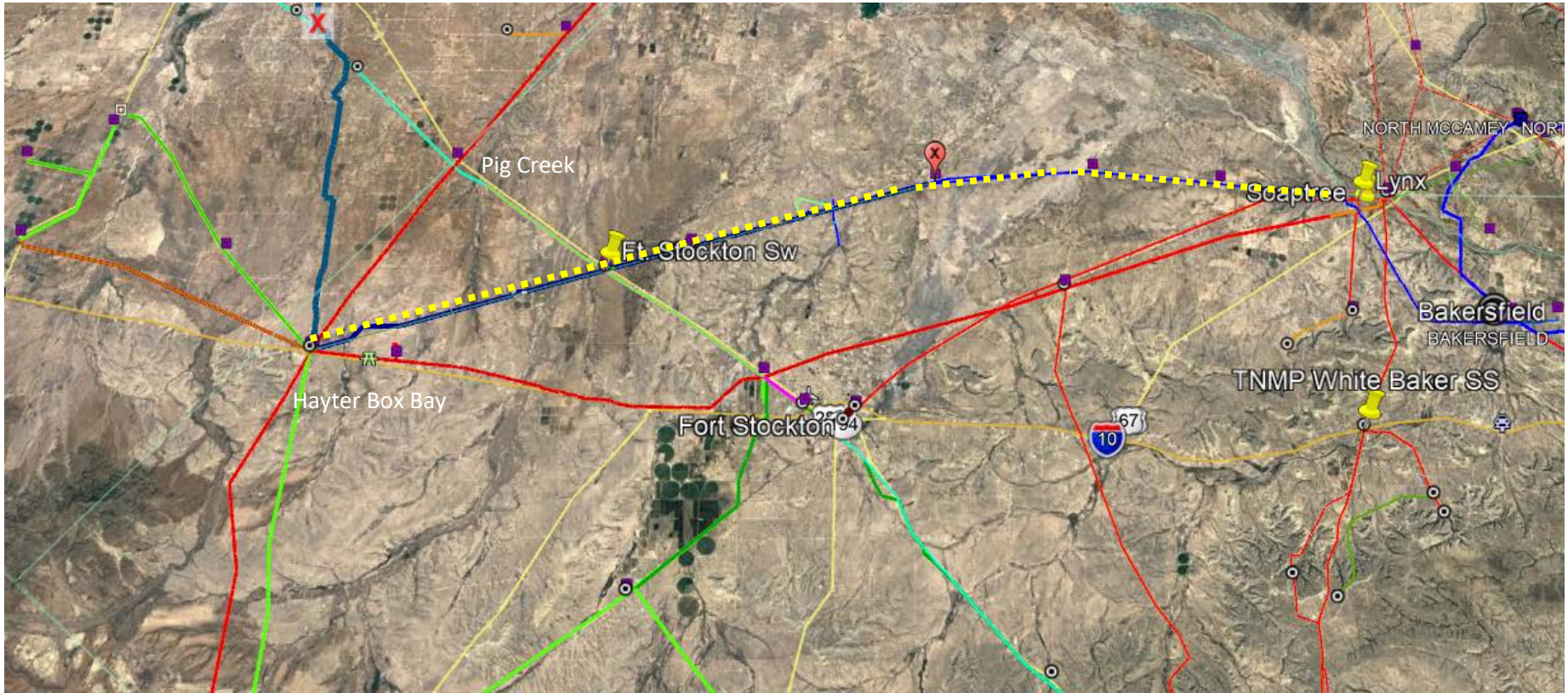
- Install 138 kV phase shifting transformer at Solstice – October 2020
- Expand Pig Creek 138 kV station for TNMP Tarbush and Taygete 1 and 2 solar farm termination – November 2020 and January 2021
- Rebuild Barrilla Junction to Ft. Stockton SW to Rio Pecos 69 kV line, convert to 138 kV, re-terminate into Solstice, install 138 kV capacitor bank at Solstice, and build new Ft. Stockton Switch 138 kV station – November 2020
- New Solstice 345 kV station, add two 50 Mvar shunt reactors and 345 kV double circuit line to LCRA Bakersfield station – December 2020
- Termination of TNMP 16th Street – Rio Pecos 138 kV line and Woodward 2 into Lynx station – December 2020
- Hayter station on Solstice to Alamito Creek 138 kV line– May 2021

BOUNDLESS ENERGY™



BOUNDLESS ENERGY™

2020 Planned Projects



BOUNDLESS ENERGY™



BOUNDLESS ENERGY™

Solstice to Sand Lake 345 kV line project status

- Property and ROW purchase – *All property and ROW easements are complete*
- Material
 - *Line: Material have been delivered but have to be careful not to “borrow” tower material from the end of the line. If additional materials have to be ordered that would cause delays in energization.*
- Construction: *Underway and testing to start early December. AEP will be ready before then unless there are signification material, outage, weather or COVID issue.*
- Schedule Risks:
 - *Outages : there is a lot of work going on in West Texas. If the one day outages on the adjacent Pig Creek to Solstice 138 kV line are not approved then there may be delays pulling the 345 kV conductor into the Solstice station.*

BOUNDLESS ENERGY™



BOUNDLESS ENERGY™

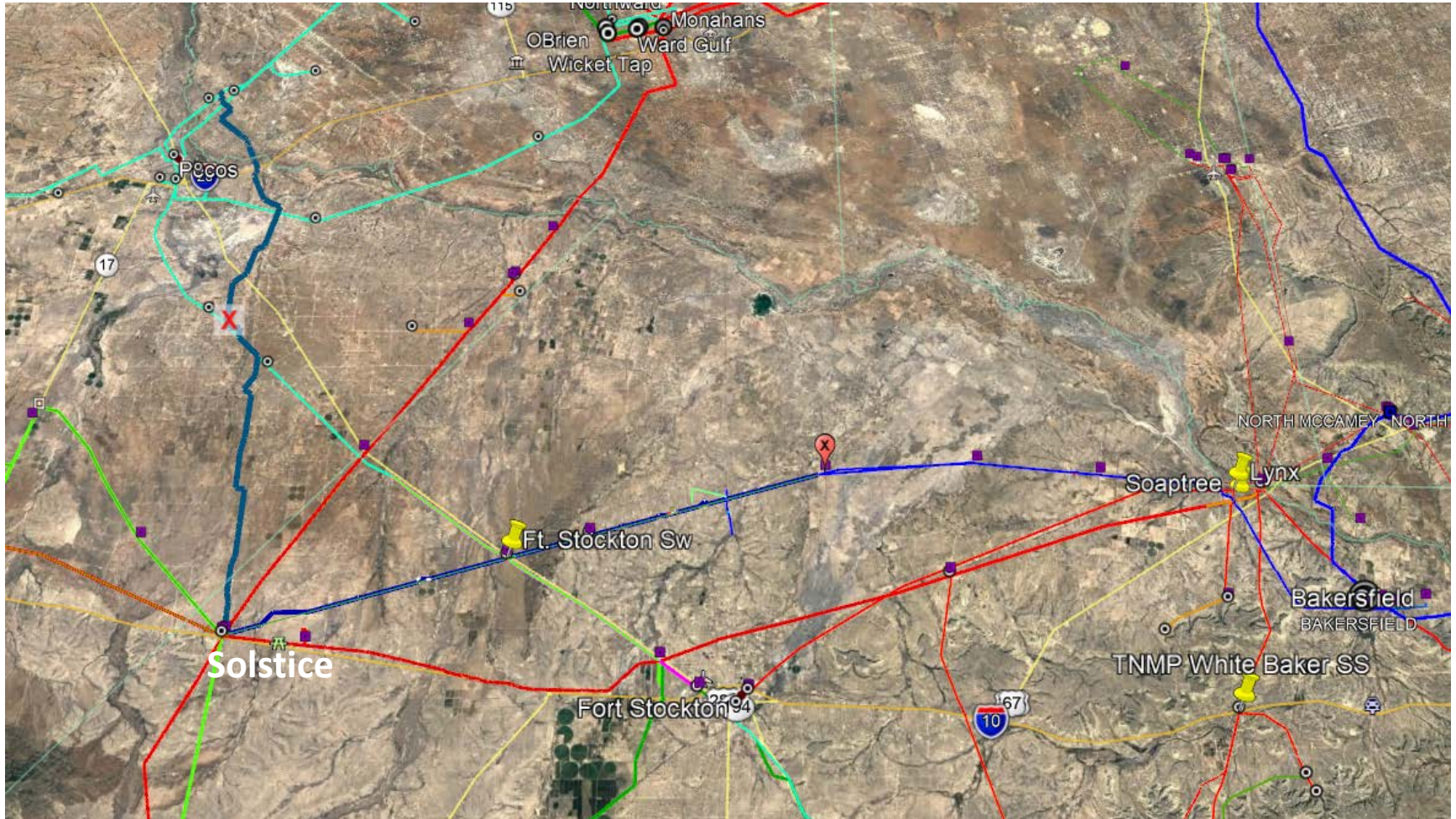
Solstice to Bakersfield 345 kV line project status

- Property and ROW purchase – *All property and ROW easements are complete*
- Material :
 - *Station: Delays in auto transformer delivery and in an effort to keep schedule we are using one of the spares on the system.*
 - *Line: Lattice steel was delayed which caused construction delays. Working with T-line contractor to implement a recovery plan to complete construction by December 2020.*
- Construction :
 - *Station: Started work January 2020. Work is progressing well and should be ready to energize by December 2020*
 - *Line: About 65% complete. Contractors have added additional foundation, tower framing and tower setting crews as well as utilizing helicopters.*
- Schedule Risks: *Recovery plan for T-line construction, spare auto transformer transport and energization at Solstice are biggest risks to schedule.*
- Challenges with COVID: *Auto transformer manufacturer lost some fabrication time and T-line contractor lost two weeks due to COVID.*
- Outages: *There are two critical outages at Solstice 138 kV in November to tie the 138 kV and 345 kV buses.*

BOUNDLESS ENERGY™

Solstice to Sand Lake

Solstice to Bakersfield 345 kV lines





BOUNDLESS ENERGY™

Solstice to Bakersfield



BOUNDLESS ENERGYSM



BOUNDLESS ENERGY™

Solstice to Sand Lake



BOUNDLESS ENERGY™

**AMERICAN
ELECTRIC
POWER™**

BOUNDLESS ENERGY™

Questions ?

BOUNDLESS ENERGY™