



2020 RTP Update and Load Review

January 2020
RPG Meeting

2020 RTP Updates

- Distribution Generation Resources (DGRs) will be dispatched similarly to other Generation Resources (GRs) of the same resource type.
- Settlement Only Distribution Generators (SODGs) will be kept offline.
- Due to air permit limitations, the loss of all five Permian Basin generators will be studied as a first level contingency in the P3 contingency analysis.

Load Forecast

SSWG Load– Based on 19 SSWG cases posted on 10/09/2019 less self-served load

Year	Coast	East	Far West	North	North Central	South Central	Southern	West	NCP Total
2021	24,172	3,402	6,832	2,233	27,797	14,490	6,520	2,358	87,804
2022	24,387	3,253	7,264	2,240	28,454	14,850	7,098	2,359	89,906
2023	24,526	3,423	7,622	2,240	29,387	15,159	7,492	2,379	92,228
2024	24,659	3,432	7,672	2,267	29,474	15,469	8,026	2,410	93,410
2025	24,821	3,538	7,962	2,277	30,371	15,794	8,270	2,413	95,447
2026	24,954	3,574	7,989	2,298	30,906	16,128	8,385	2,432	96,665

90th percentile Load Forecast– less losses

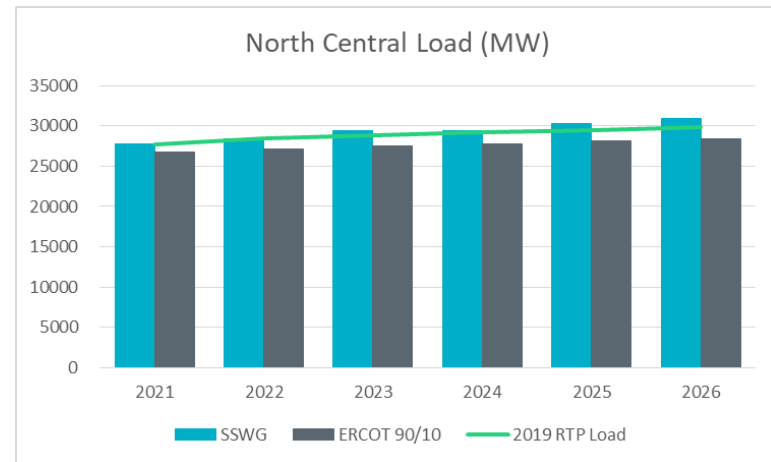
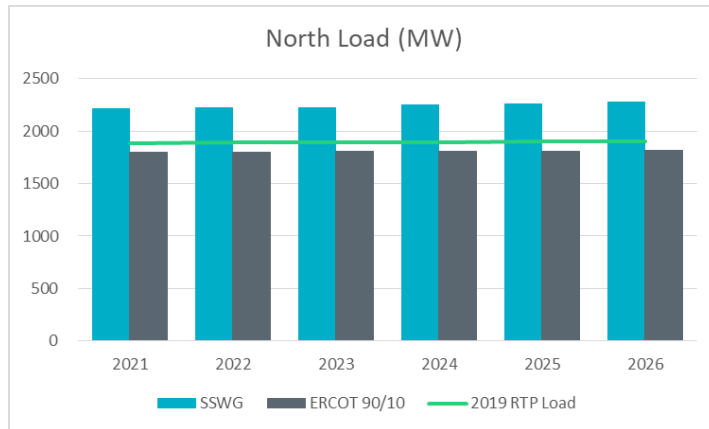
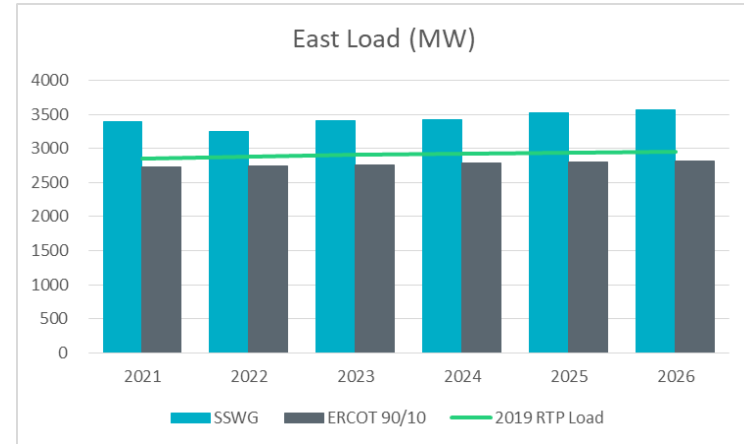
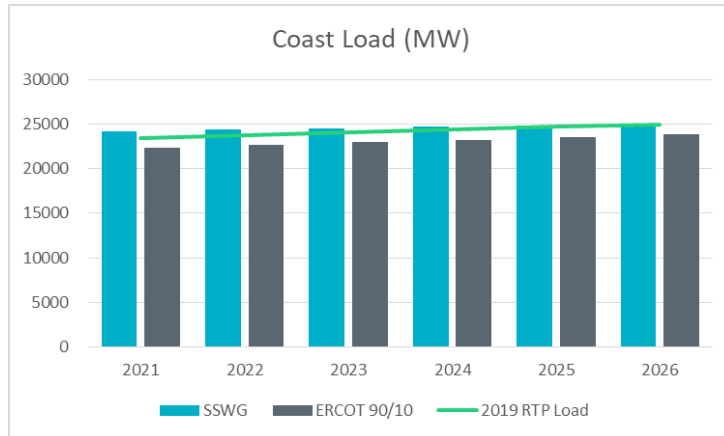
Year	Coast	East	Far West	North	North Central	South Central	Southern	West	NCP Total
2021	22,281	2,722	5,778	1,797	26,825	13,526	6,019	2,106	81,054
2022	22,617	2,747	6,103	1,801	27,134	13,679	6,652	2,157	82,890
2023	22,927	2,765	6,410	1,804	27,469	13,845	6,976	2,208	84,404
2024	23,229	2,782	6,711	1,808	27,805	14,010	7,220	2,261	85,825
2025	23,528	2,797	7,003	1,811	28,135	14,170	7,319	2,311	87,073
2026	23,826	2,813	7,294	1,815	28,456	14,325	7,417	2,359	88,305

Load Forecast: 2020 RTP Load Level (less self-served and losses, preliminary)

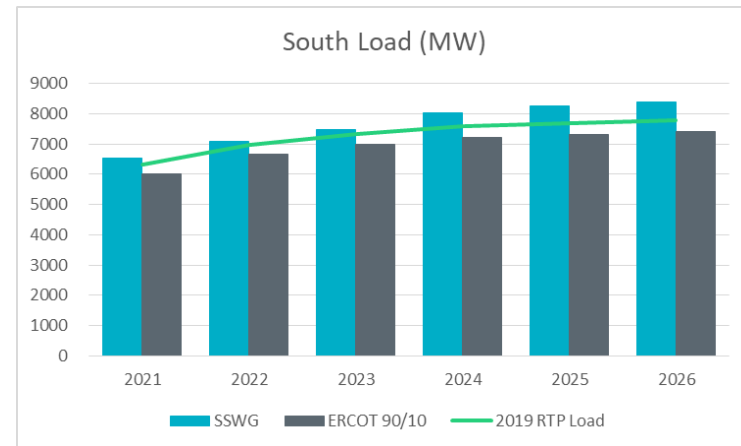
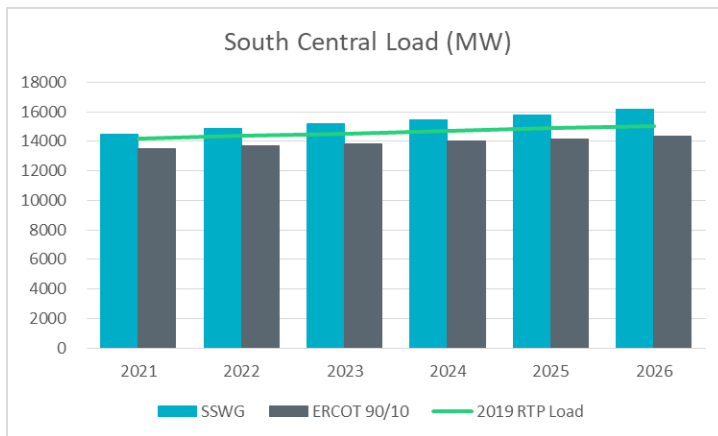
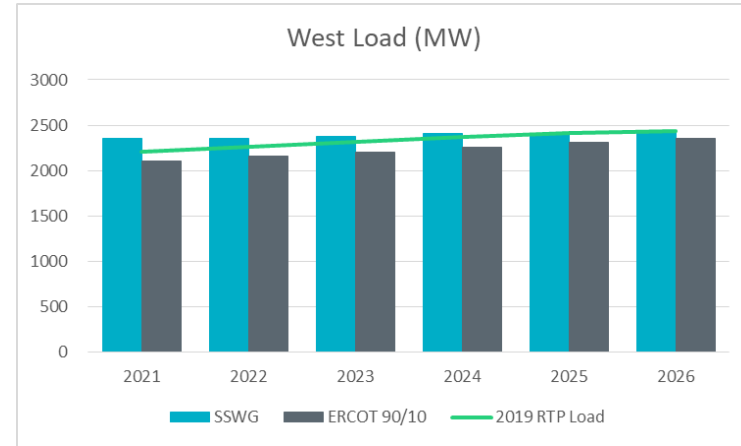
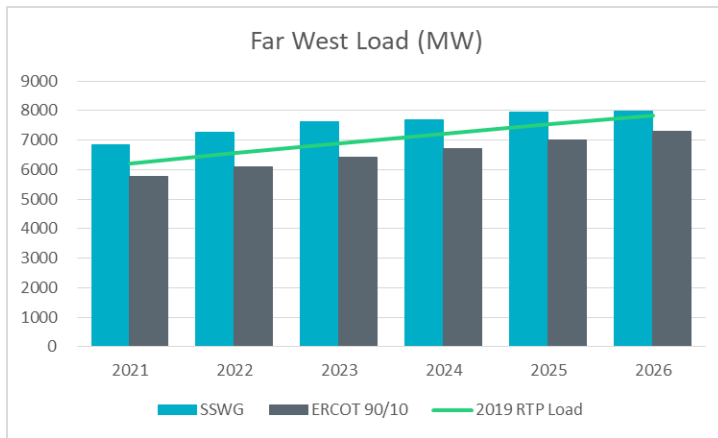
Year	Coast	East	Far West	North	North Central	South Central	Southern	West	Total
2021	23,395	2,858	6,212	1,887	27,797	14,202	6,320	2,211	84,882
2022	23,748	2,884	6,561	1,891	28,454	14,363	6,984	2,265	87,150
2023	24,073	2,903	6,891	1,894	28,843	14,537	7,325	2,319	88,785
2024	24,391	2,921	7,214	1,898	29,195	14,711	7,581	2,374	90,284
2025	24,705	2,937	7,528	1,902	29,541	14,879	7,685	2,412	91,589
2026	24,954	2,954	7,841	1,905	29,879	15,041	7,788	2,432	92,794

	Bounded (based on 5% threshold, Far West based on 7.5% threshold)
	90th percentile
	SSWG Forecast

SSWG Load v/s ERCOT 90/10 (less self-served and losses)



SSWG Load v/s ERCOT 90/10 (less self-served and losses)



2020 Load Review

- Preliminary start cases with the proposed load levels will be posted on MIS Secure Area (no case conditioning steps will be applied).

[Grid>Regional Planning>Regional Transmission Planning>2020 Regional Transmission Plan Postings](#)

- TSPs are requested to review these and provide feedback on the initial draft.
- TSPs may choose to accept the load forecast, or
- TSPs may choose to provide additional justification for cases where the proposed levels are not consistent with their expectations.

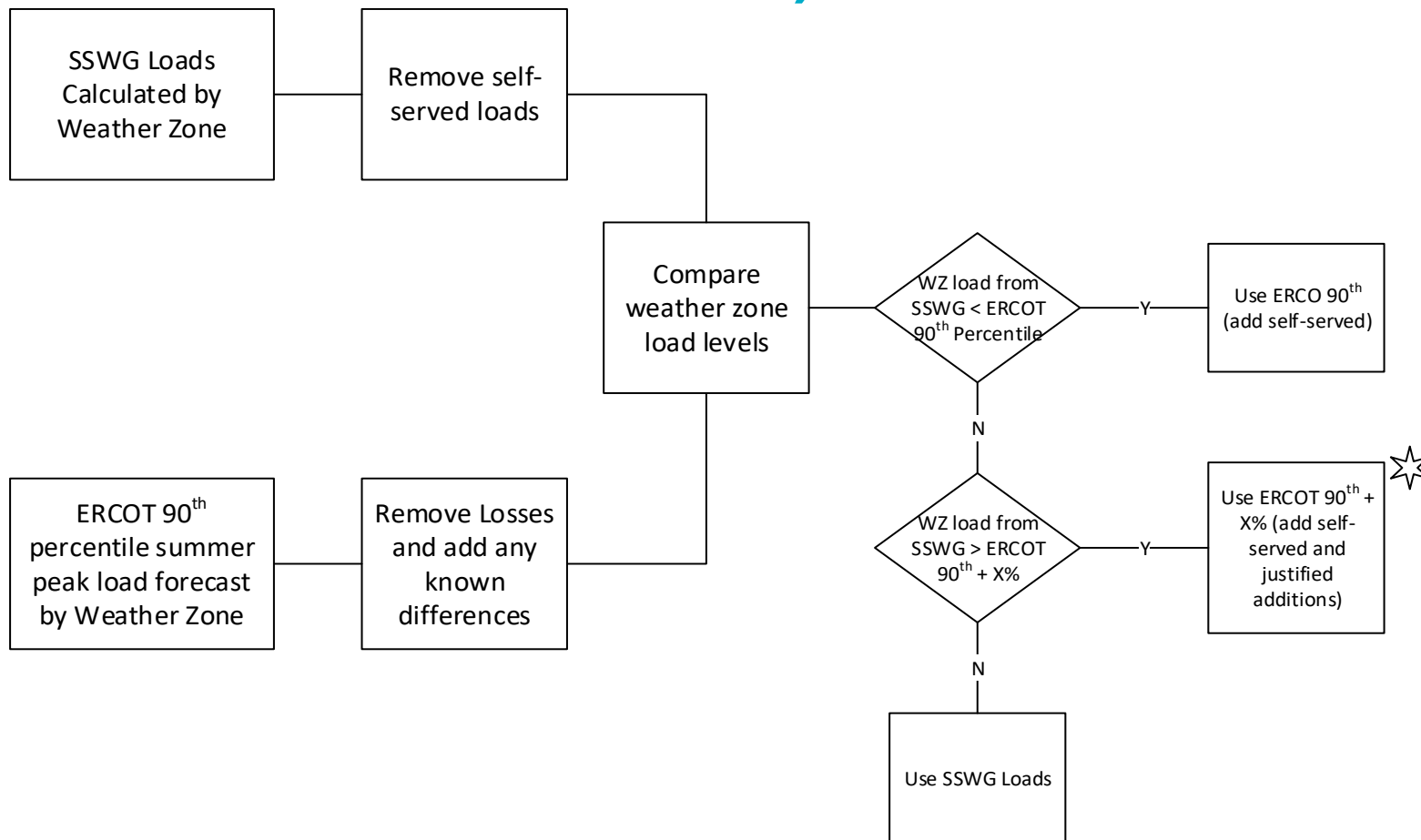
Next Steps

- TPs and TOs to provide feedback on proposed load level (by January 31 2020).
- Feedback provided to
 - Calvin Opheim (Calvin.Opheim@ercot.com)
 - Ping Yan (Ping.Yan@ercot.com)
 - John Bernecker (John.Bernecker@ercot.com)
- ERCOT to complete Load Review and finalize RTP load levels (by February 14, 2020).
- TSPs to submit IDEVs to ERCOT to reflect the load review results (by February 28, 2020).



Appendix

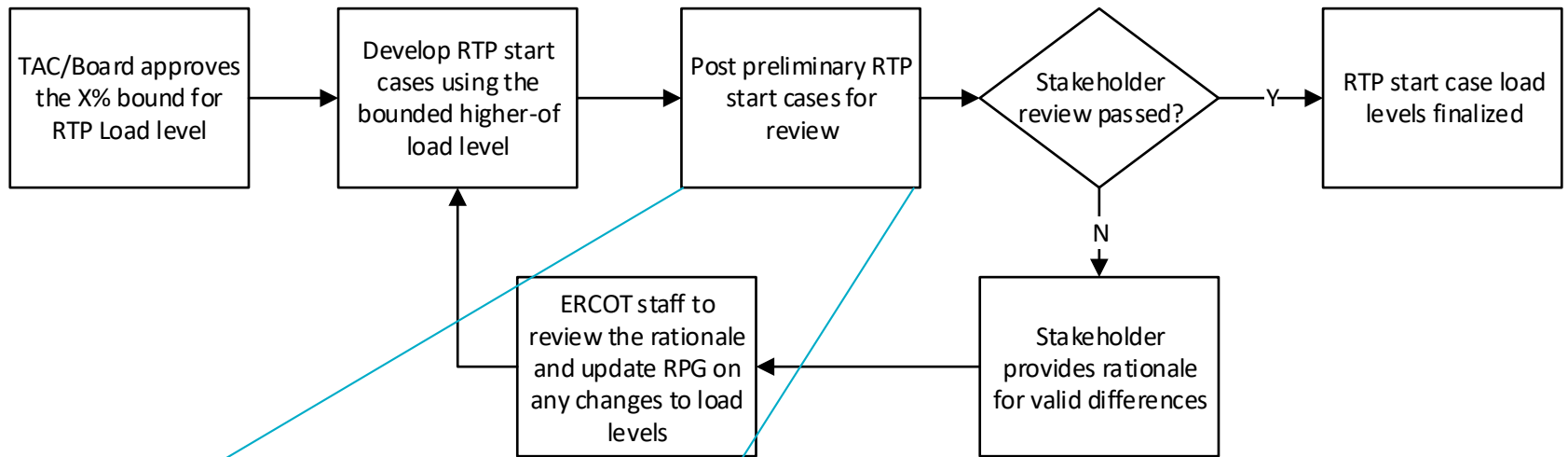
Bounded higher-of methodology (x=7.5% for Far West and x=5% for others)



* Load share for each TO within the weather zone is determined based on that TO's share of the most recent summer peak. Loads for TO's inside this WZ, but within the X% bounds would be retained from SSWG cases.



Load Review Process



Preliminary RTP start cases will be shared to allow TDSPs to review the impact of load distribution on pockets within the weather zones.

Rationale:

- Historic load growth
- Committed load additions
- Forecast methodology
- Past forecast performance
- Special circumstances
- Other?

2020 RTP Load Level with self-served (preliminary)

Year	Coast	East	Far West	North	North Central	South Central	Southern	West	Total
2021	27,368	2,901	6,213	1,887	27,821	14,202	6,727	2,326	89,445
2022	27,722	2,927	6,562	1,891	28,478	14,363	7,391	2,379	91,712
2023	28,048	2,946	6,892	1,894	28,867	14,537	7,732	2,433	93,348
2024	28,366	2,964	7,215	1,898	29,219	14,711	7,988	2,488	94,848
2025	28,681	2,980	7,529	1,902	29,565	14,879	8,092	2,528	96,156
2026	28,932	2,997	7,842	1,906	29,903	15,041	8,195	2,547	97,362

	Bounded (based on 5% threshold, Far West based on 7.5% threshold)
	90th percentile
	SSWG Forecast