



Item 11: Rayburn Country Electric Cooperative Integration Study

Jeff Billo

Sr. Manager, Transmission Planning

Board of Directors Meeting

ERCOT Public

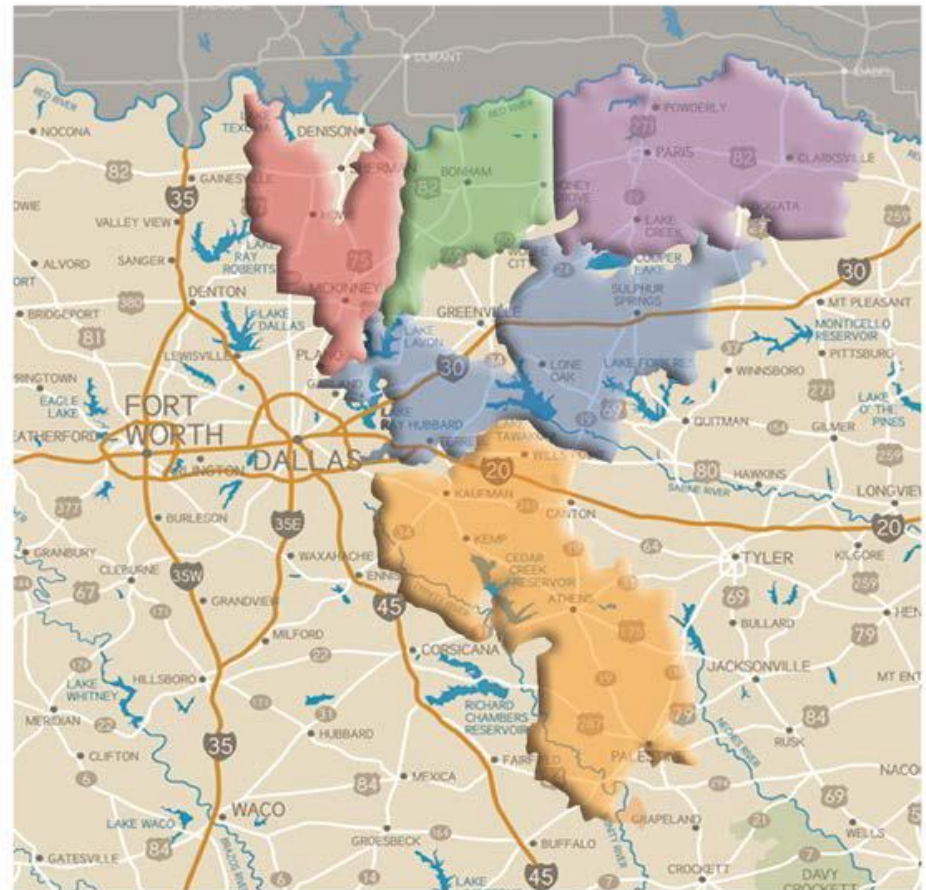
June 13, 2017

Rayburn Country Electric Coop Integration Study

- Rayburn Country Electric Cooperative (RCEC) is considering moving the remainder of its load (approximately 190 MW) from SPP to ERCOT by December 2019.
- The Public Utility Commission of Texas (PUCT) asked ERCOT to study the integration of the RCEC load.
- The objective of the study was to identify the transmission facilities required to integrate RCEC load in the most efficient way possible.
- This presentation is for informational purposes.

ERCOT Analysis

- ERCOT evaluated 12 integration options and shortlisted to four options.
- Evaluation included analyses for:
 - Reliability
 - Economic
 - Feasibility analyses

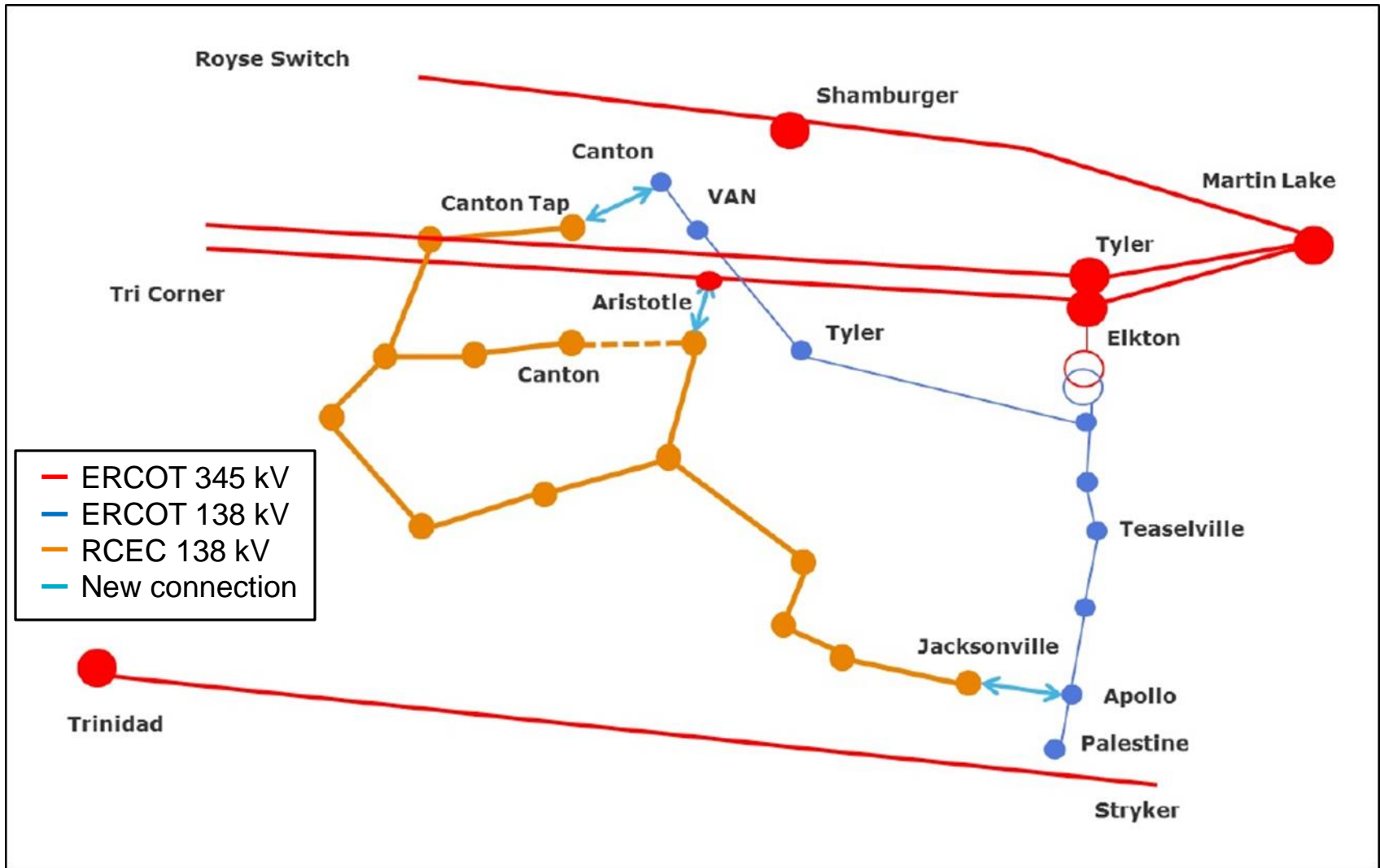


- Grayson-Collin, Van Alstyne
- Fannin County, Bonham
- Lamar County, Paris
- Trinity Valley, Athens
- Farmers Electric, Greenville

ERCOT's Preferred Option

- Based on the study, ERCOT prefers Option 2 for integrating the remaining RCEC load into ERCOT
 - Met reliability criteria with margin for future load growth
 - Least cost option (\$38 million)

Option 2



Conclusion

- ERCOT will file the final report with the PUCT by the end of the month
- Questions?