



Item 4.1: 2015 Mid-Summer Update

Dan Woodfin, Director of System Operations

Resmi Surendran, Senior Manager of Market Analysis

Chris Coleman, Senior Meteorologist

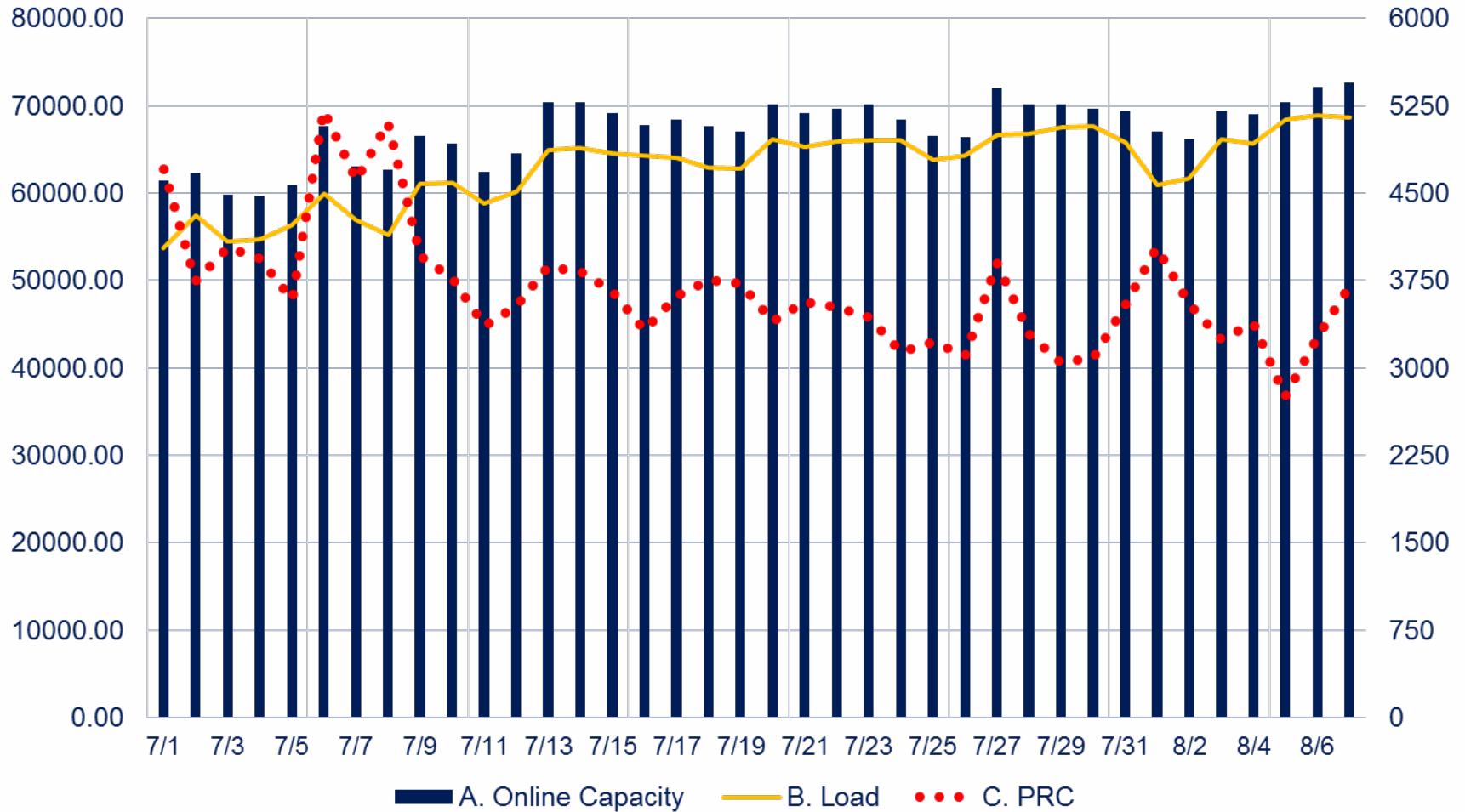
Board of Directors Meeting

ERCOT Public

August 11, 2015

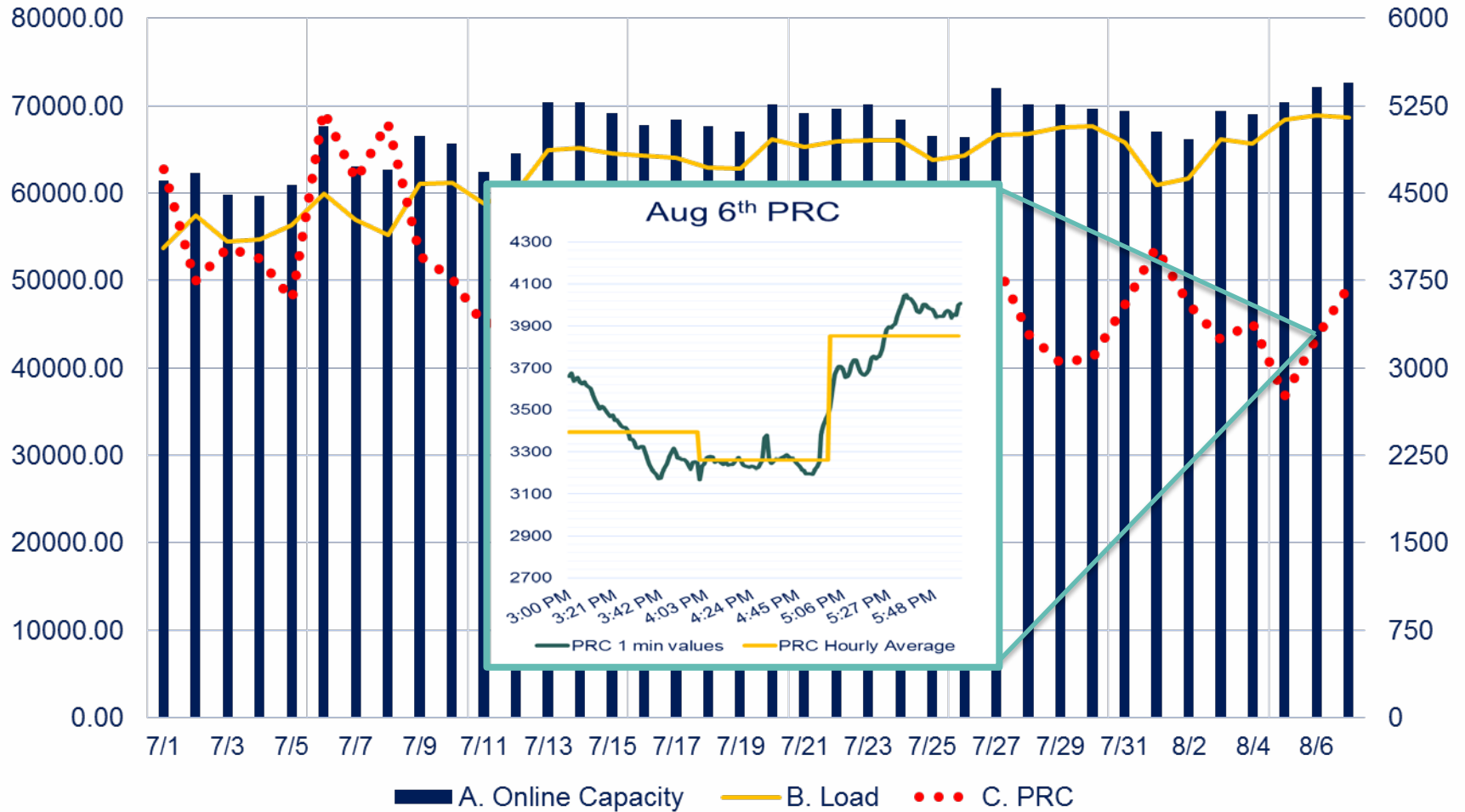
Summer Trends – Load and Online Capacity

Hour Ending 17:00 Values



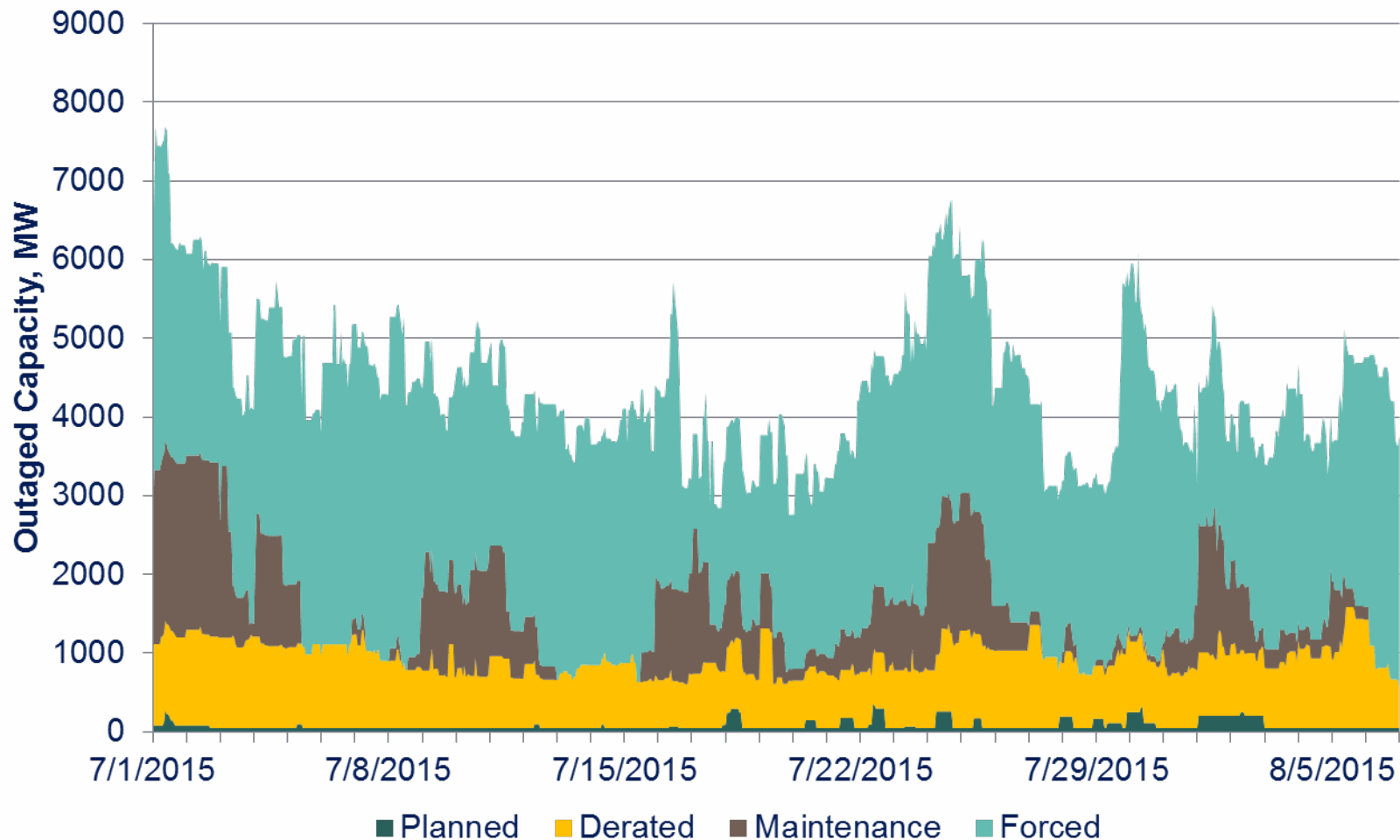
Summer Trends – Load and Online Capacity

Hour Ending 17:00 Values

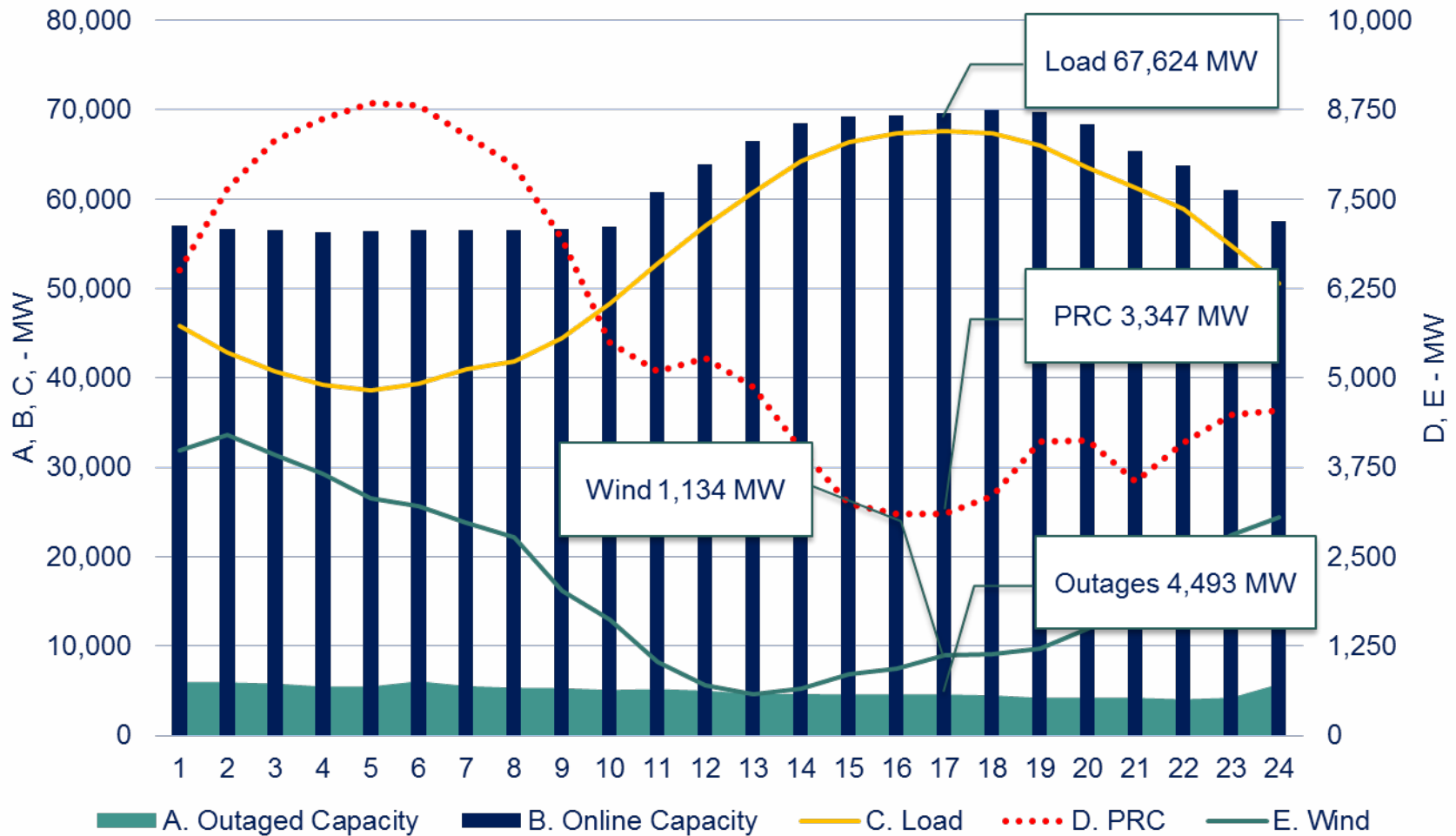


Summer Trends: Outaged Capacity

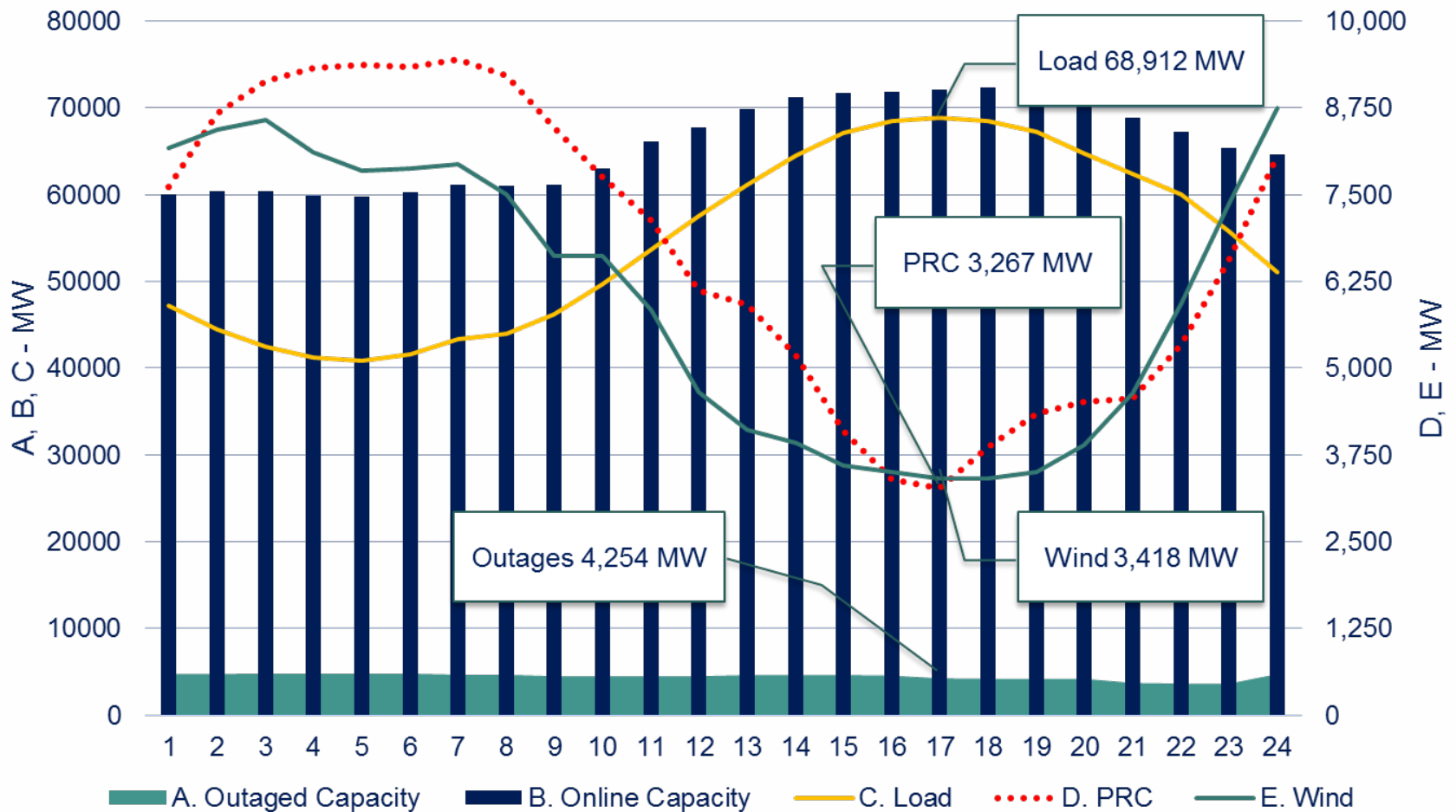
Summer Trends & Generation Outages



Hourly Average Values

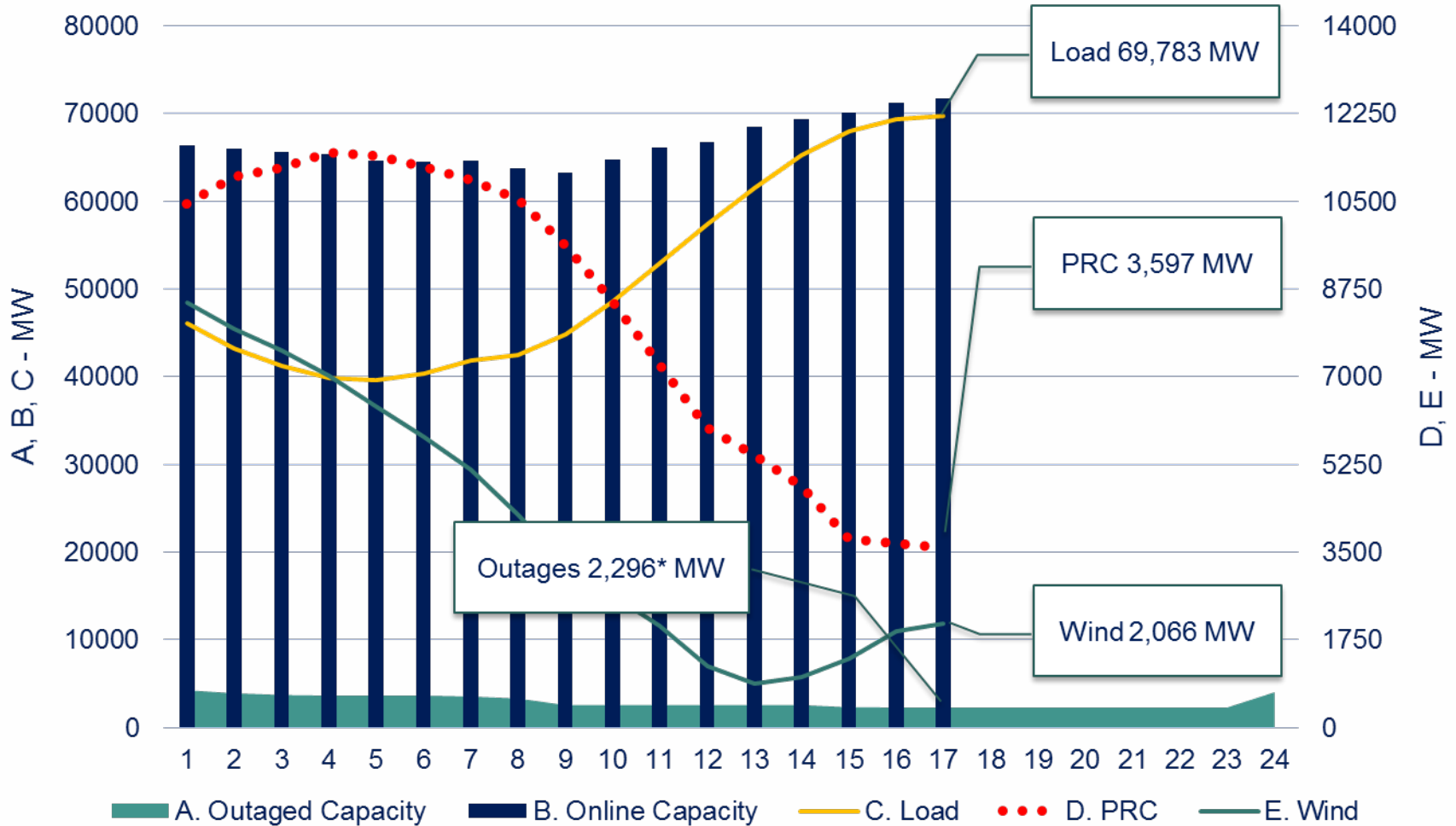


Hourly Average Values



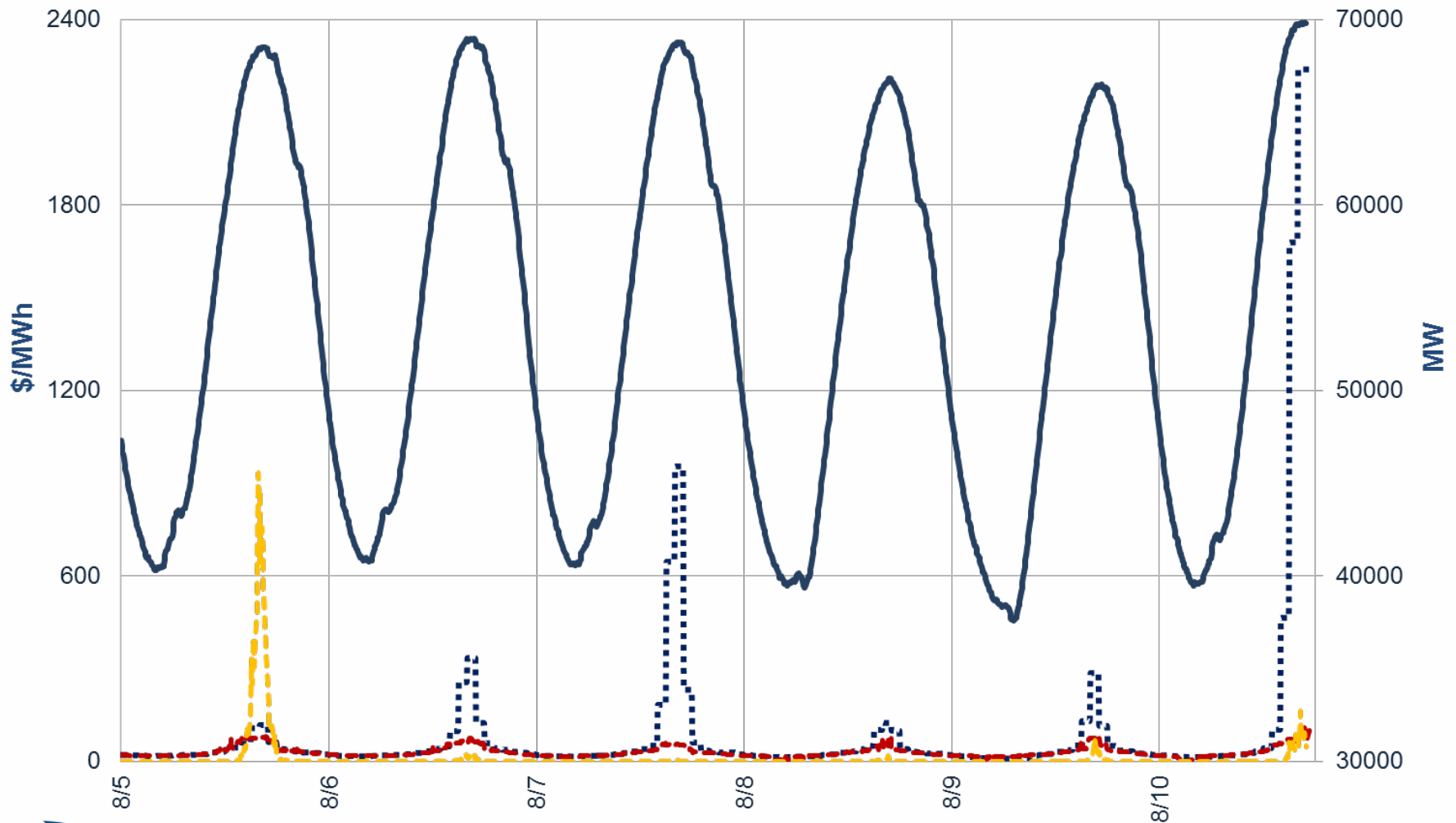
Aug 10th 2015

Hourly Average Values



Aug 5th – 10th 2015

5 Minute RT Load Vs RT/DAM Prices



Item 4.1
ERCOT Public

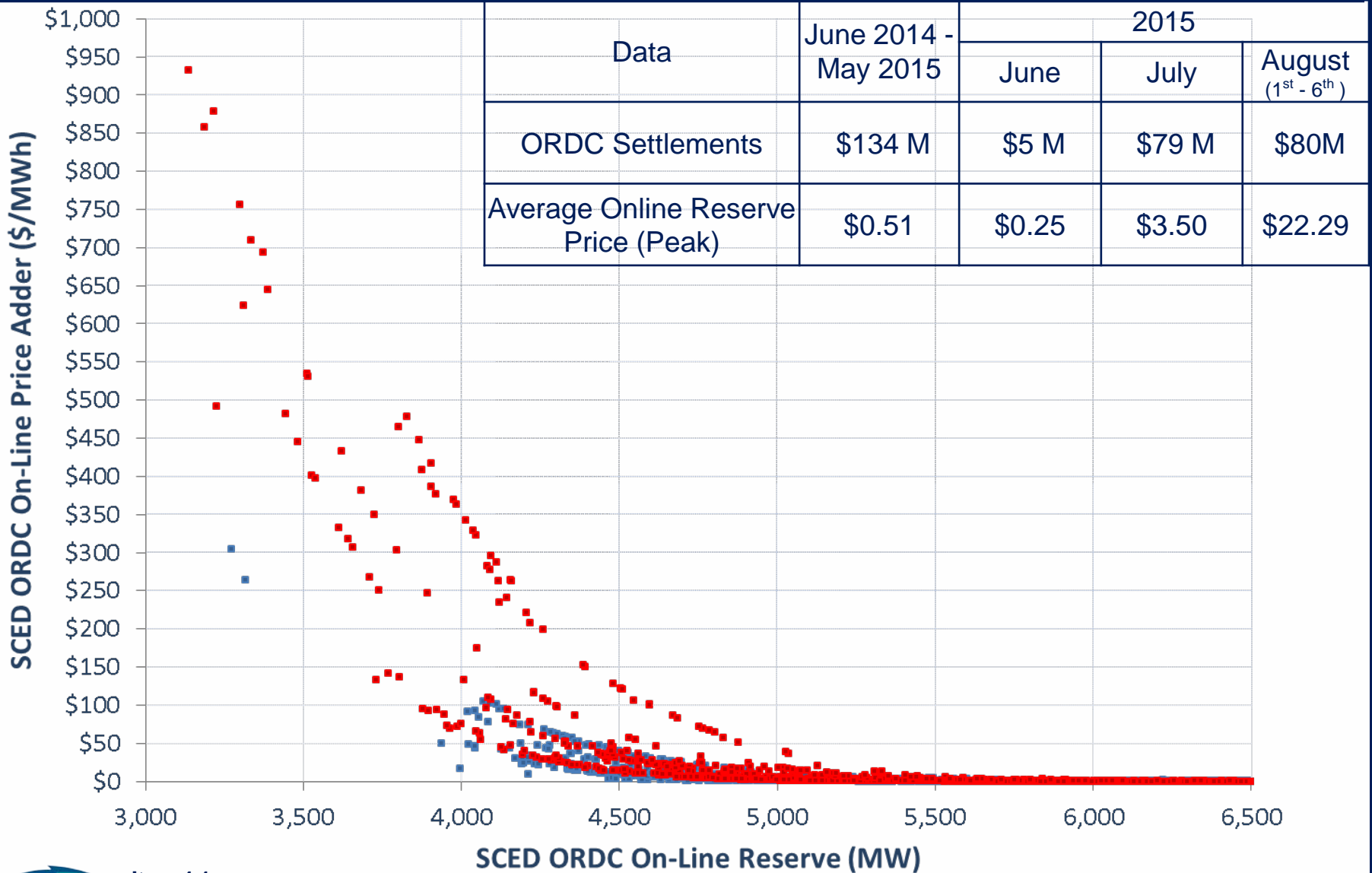
.....DAM_LMP

-----RT_LMP

-----RT Price Adder

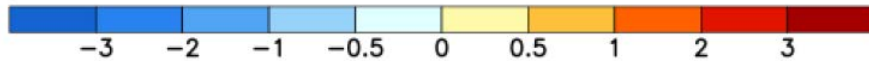
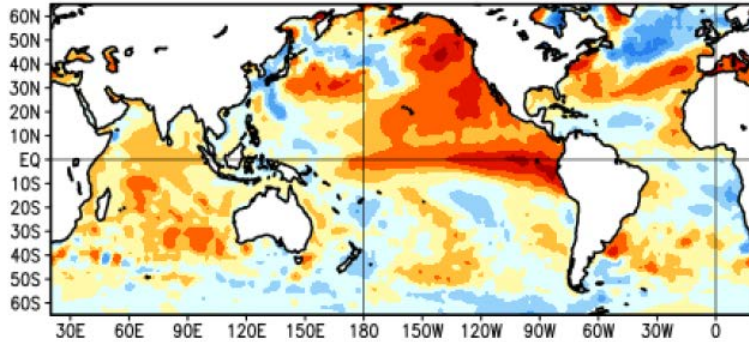
———Load

SCED ORDC On-Line Reserve and Price Adder

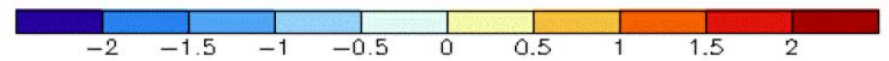
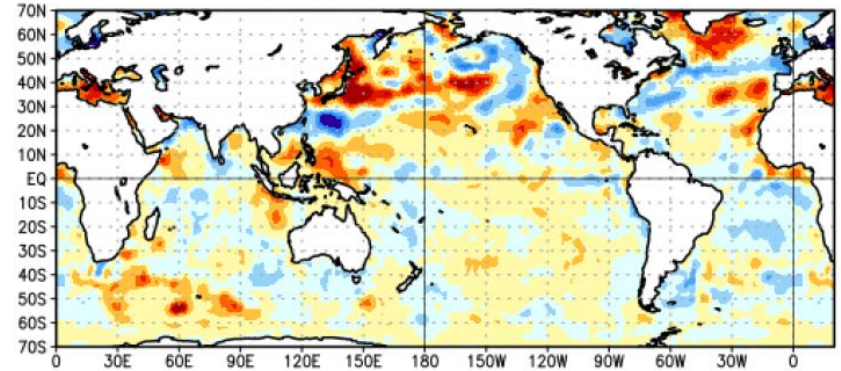


El Niño and Ocean Temperatures

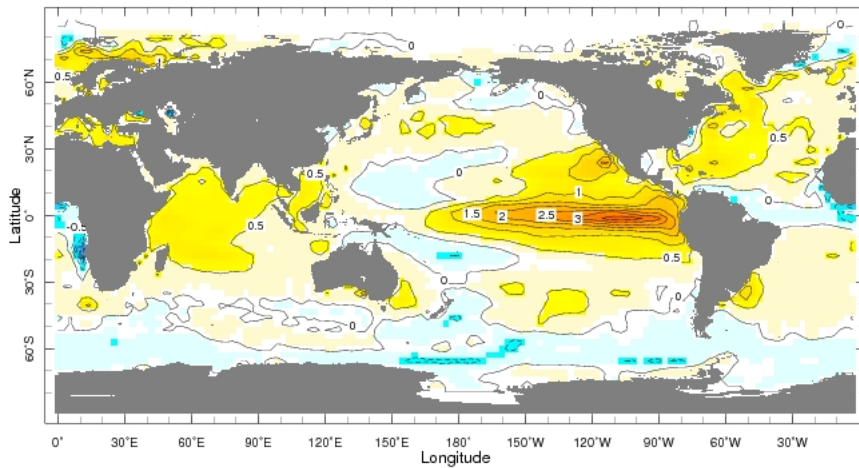
Average SST Anomalies
5 JUL 2015 – 1 AUG 2015



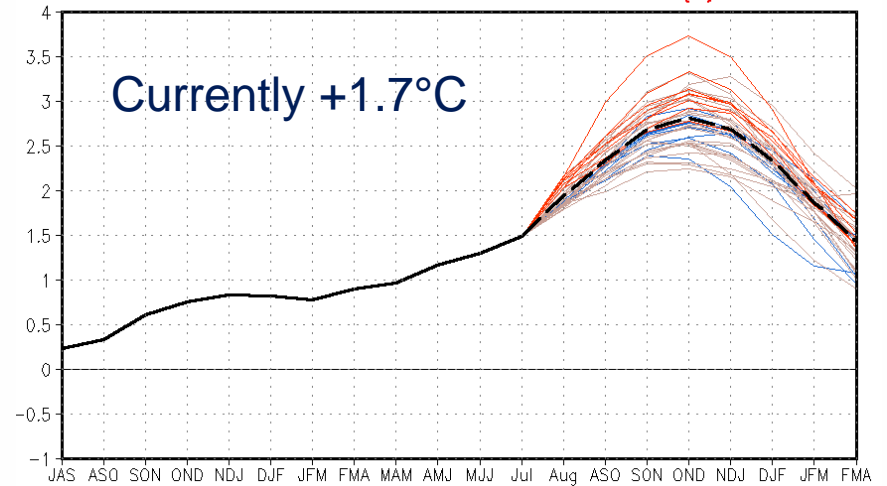
Change in Weekly SST Anoms (°C)
29JUL2015 minus 01JUL2015



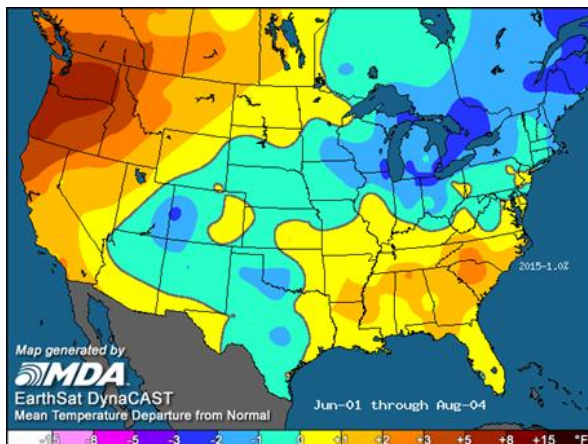
Dec 2015 - Feb 2016 IRI seasonal Forecast SSTA issued 0000 1 Jul 2015



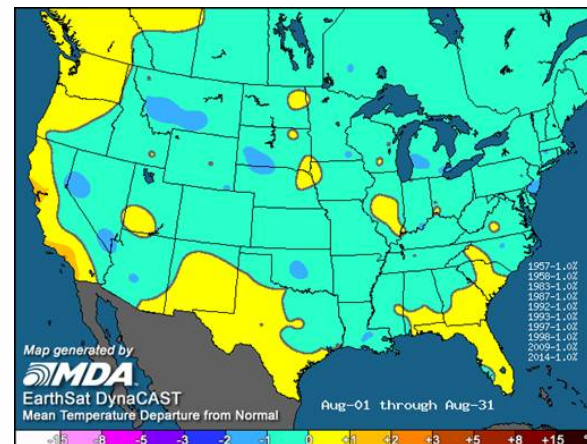
CFSv2 forecast Nino3.4 SST anomalies (K)



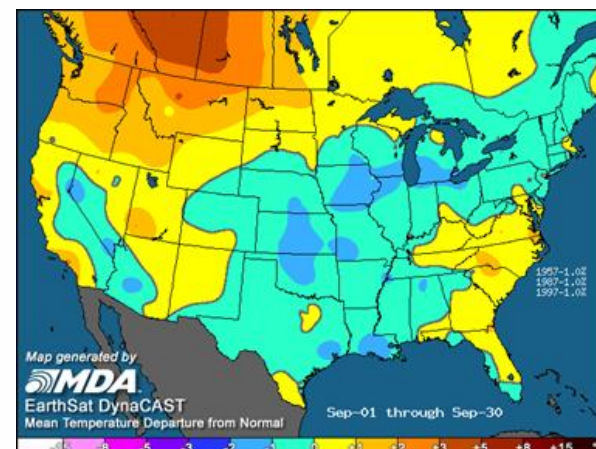
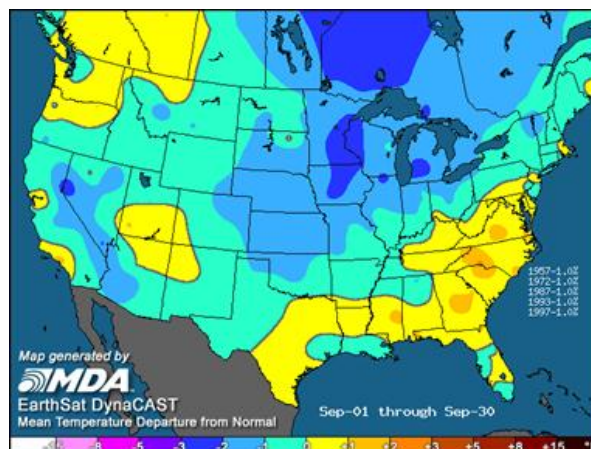
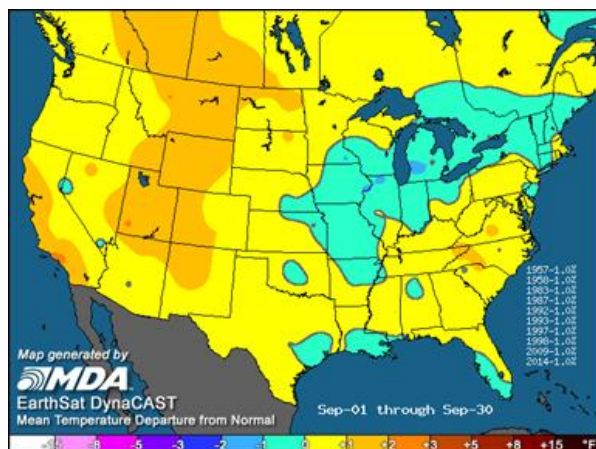
August and September Temperatures



Summer 2015 to-date

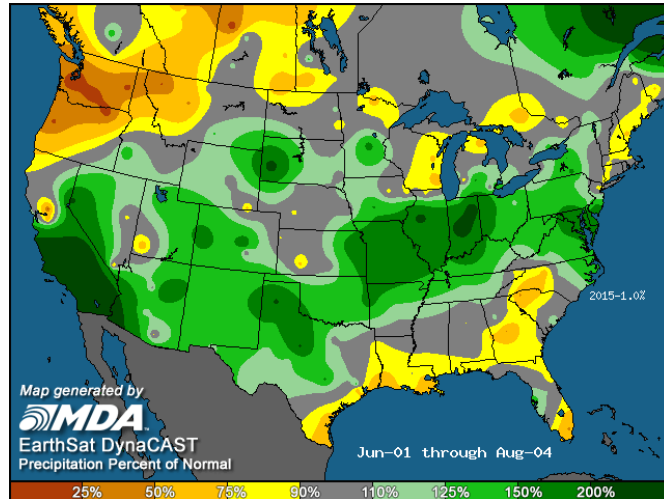


Potential August

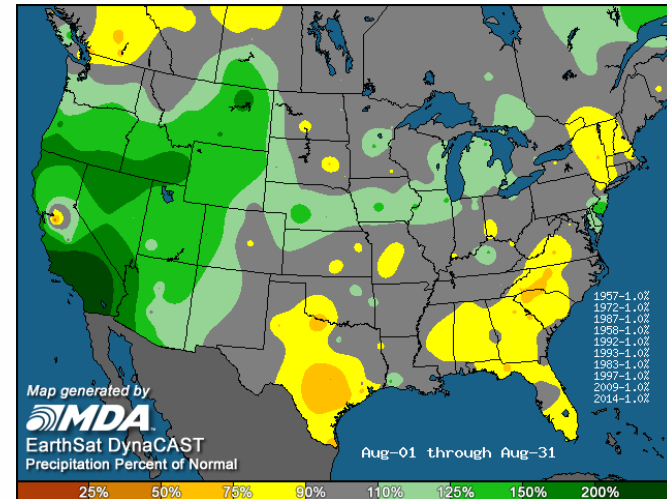


Three potential September patterns, depending on northeast Pacific temperatures

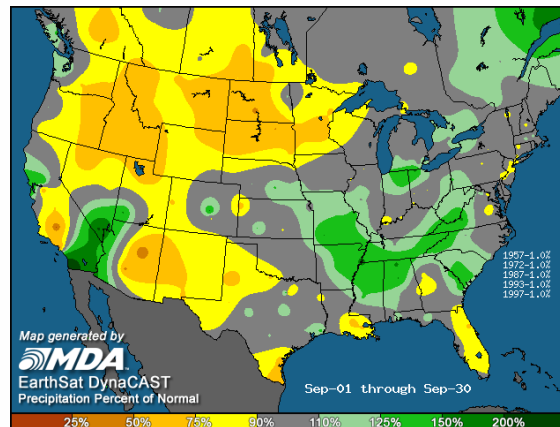
August and September Precipitation



Summer 2015 to-date

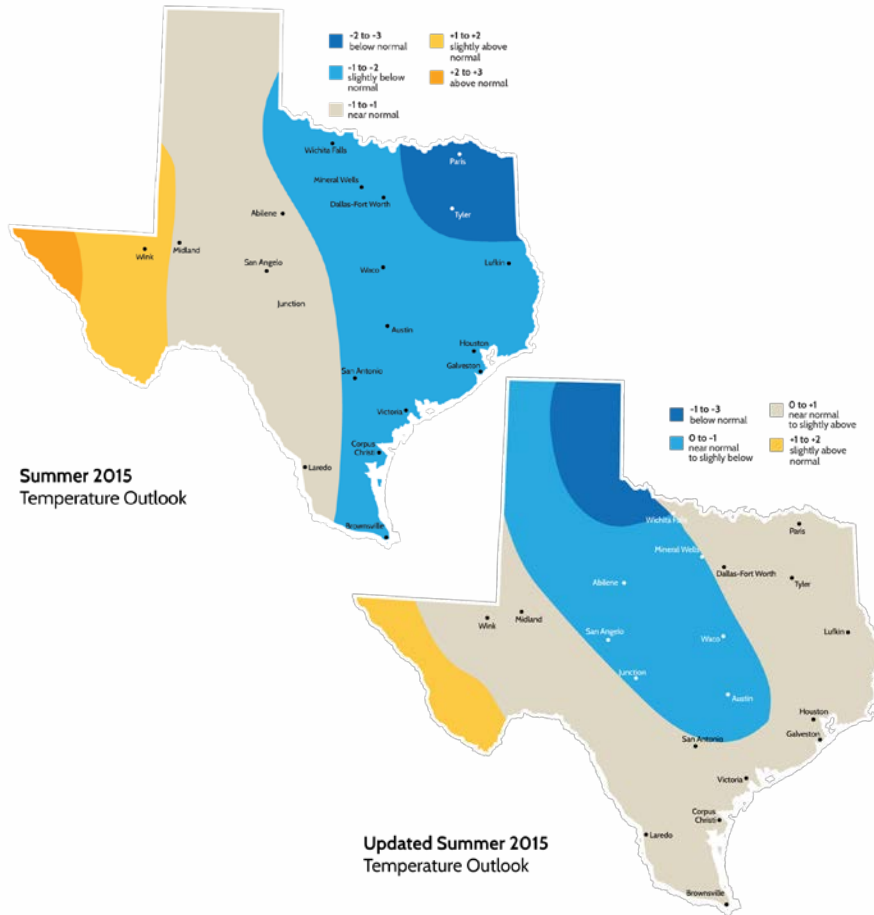


Potential August



Most likely September rainfall pattern

Summer 2015 Temperature and Precipitation Updates



Forecast Update:
 Second-half of August and September will dictate the final outcome.

Current # of 100° Days:
 Dallas: 11 (2014:10, 2011: 47)
 Houston: 8 (2014: 0, 2011: 21)
 San Antonio: 6 (2014: 3, 2011: 23)
 Austin: 6 (2014: 5, 2011: 44)

Increasingly likely, Texas will see a less hot period taking form later this week and continuing next week.

Milder anomalies may be more prevalent Coast and South.

Unlikely to rank with the summers of 2010-2013 (top 25) for heat

