



ERCOT Monthly Operational Overview (**February 2015**)

ERCOT Public
March 15, 2015

Grid Planning & Operations

Summary – February 2015

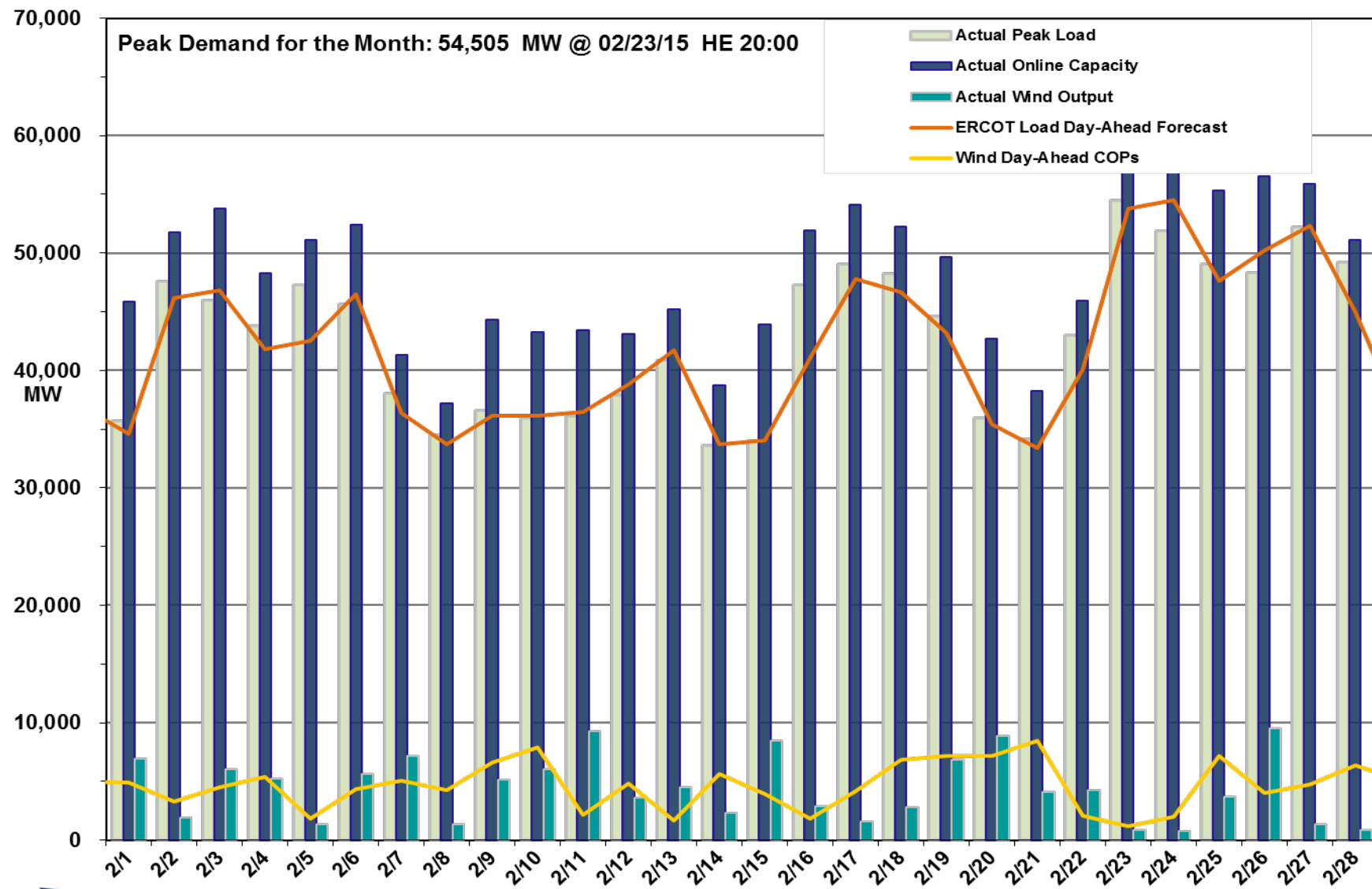
Operations

- The peak demand of 54,505 MW on February 23rd was slightly greater than the mid-term forecast peak of 53,767 MW of the same operating period. However, it was less than the February 2014 actual peak demand of 57,056 MW. The instantaneous peak load on February 23rd was 54,753 MW.
- Day-ahead load forecast error for February was 3.38%
- ERCOT issued four notifications
 - One advisory due to cold weather (2/20)
 - One Transmission Watch due to a forced transmission outage (2/22)
 - One OCN due to new Generic Transmission Constraint (2/27)
 - One advisory due to postponing of the DAM solution (2/28)

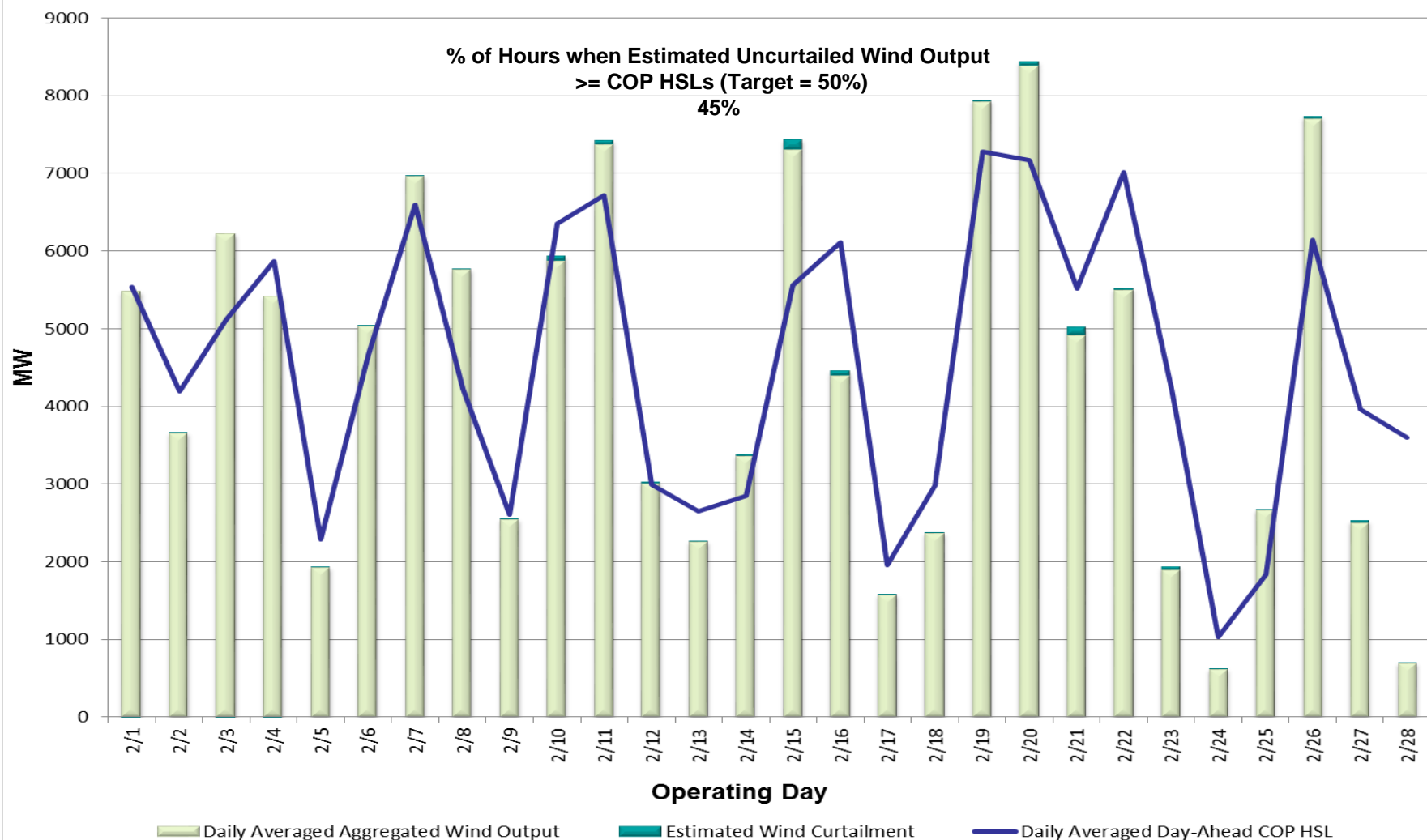
Planning Activities

- 245 active generation interconnection requests totaling over 63,000 MW, including 25,300 MW of wind generation as of February 28, 2015. Six additional requests and 900 more MW from January 31, 2015.
- 12,575 MW wind capacity in commercial operations on February 28, 2015.

Daily Peak Demand: Hourly Average Actual vs. Forecast, Wind Day-Ahead COPs & On-line Capacity at Peak – February 2015

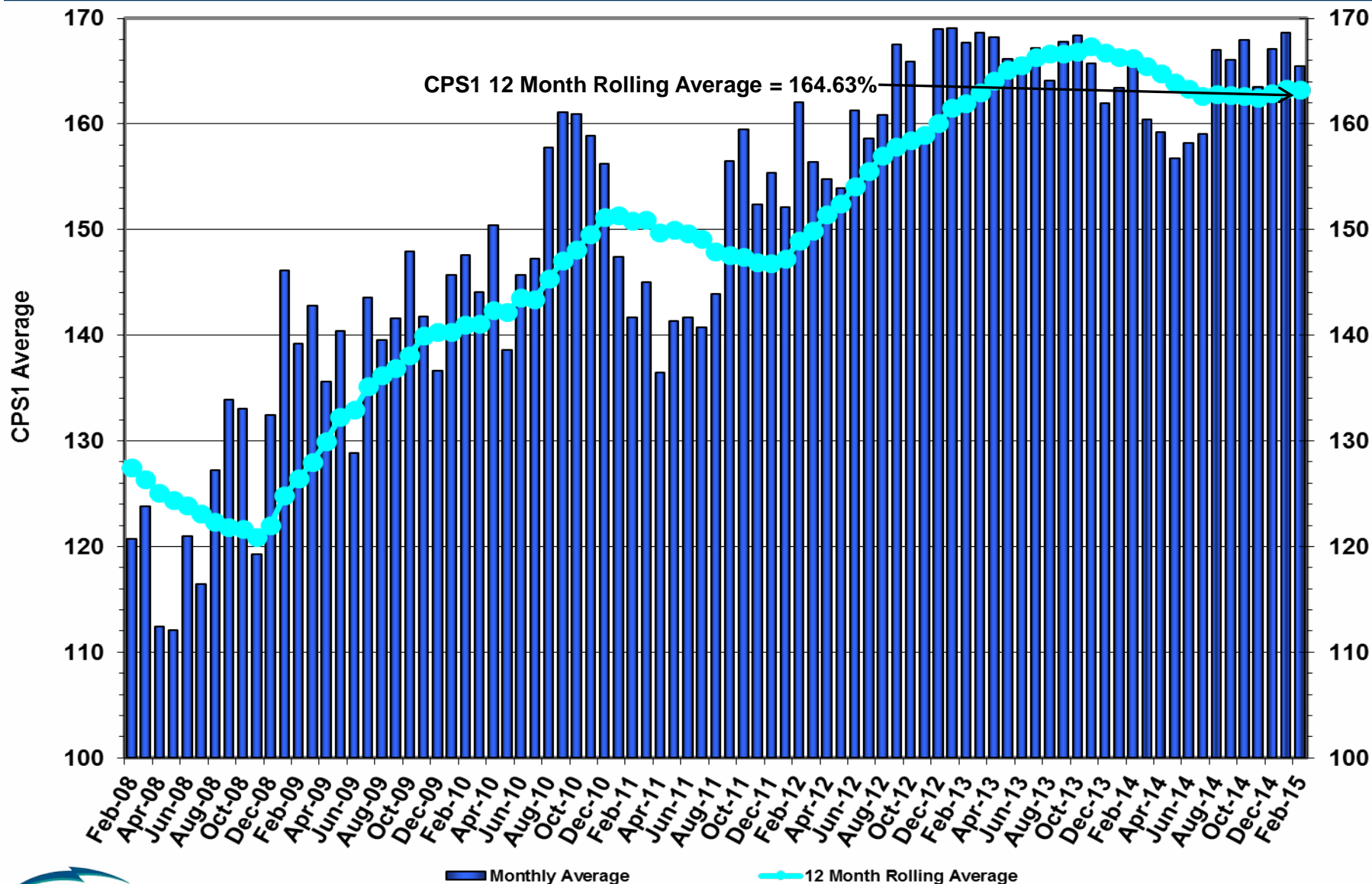


Actual Wind Output plus Curtailments vs. Wind Day-Ahead COPs for All Hours – February 2015

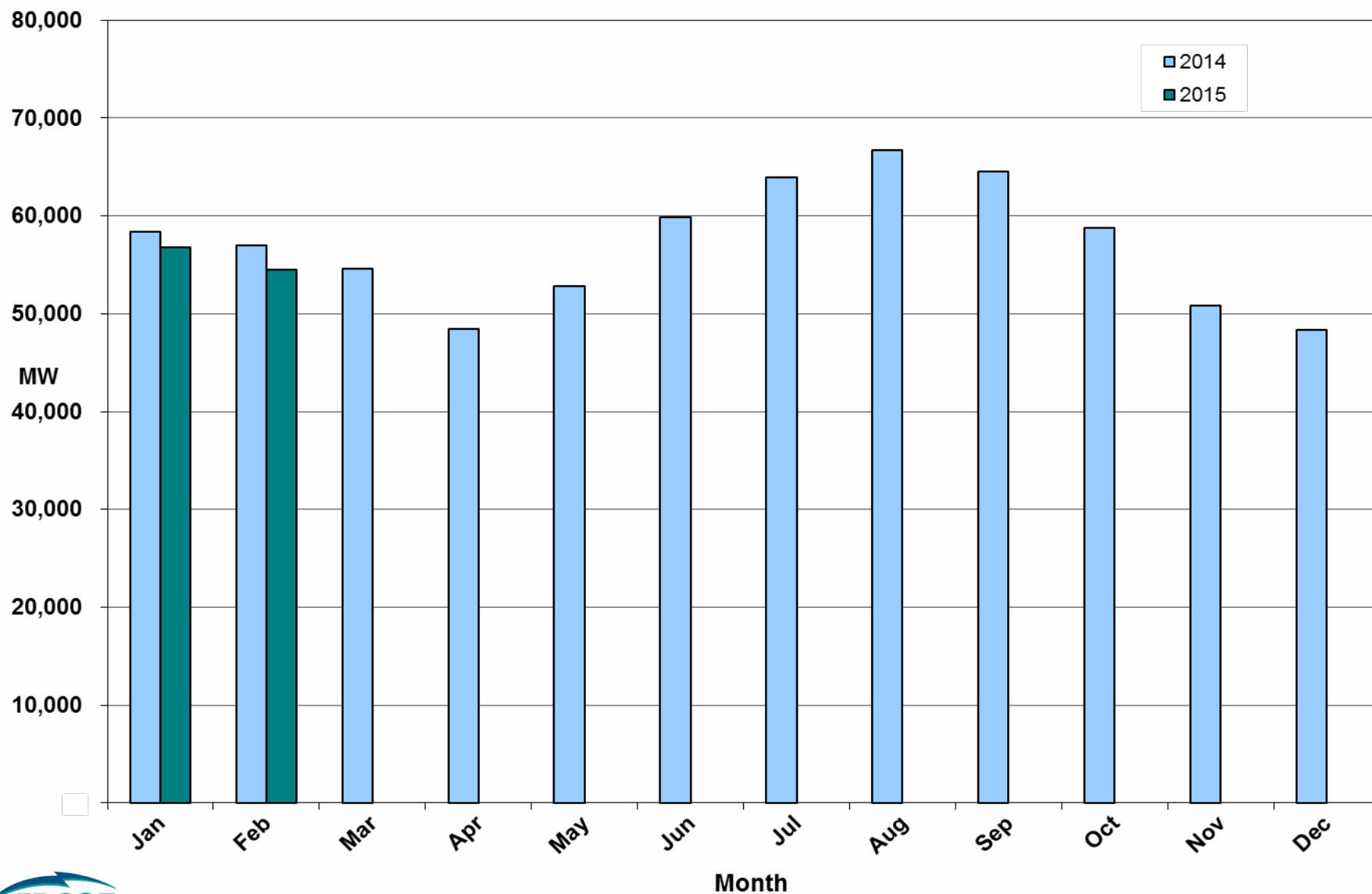


Note: QSEs must use the AWST 50% probability of exceedance forecast as the HSL in their COPs

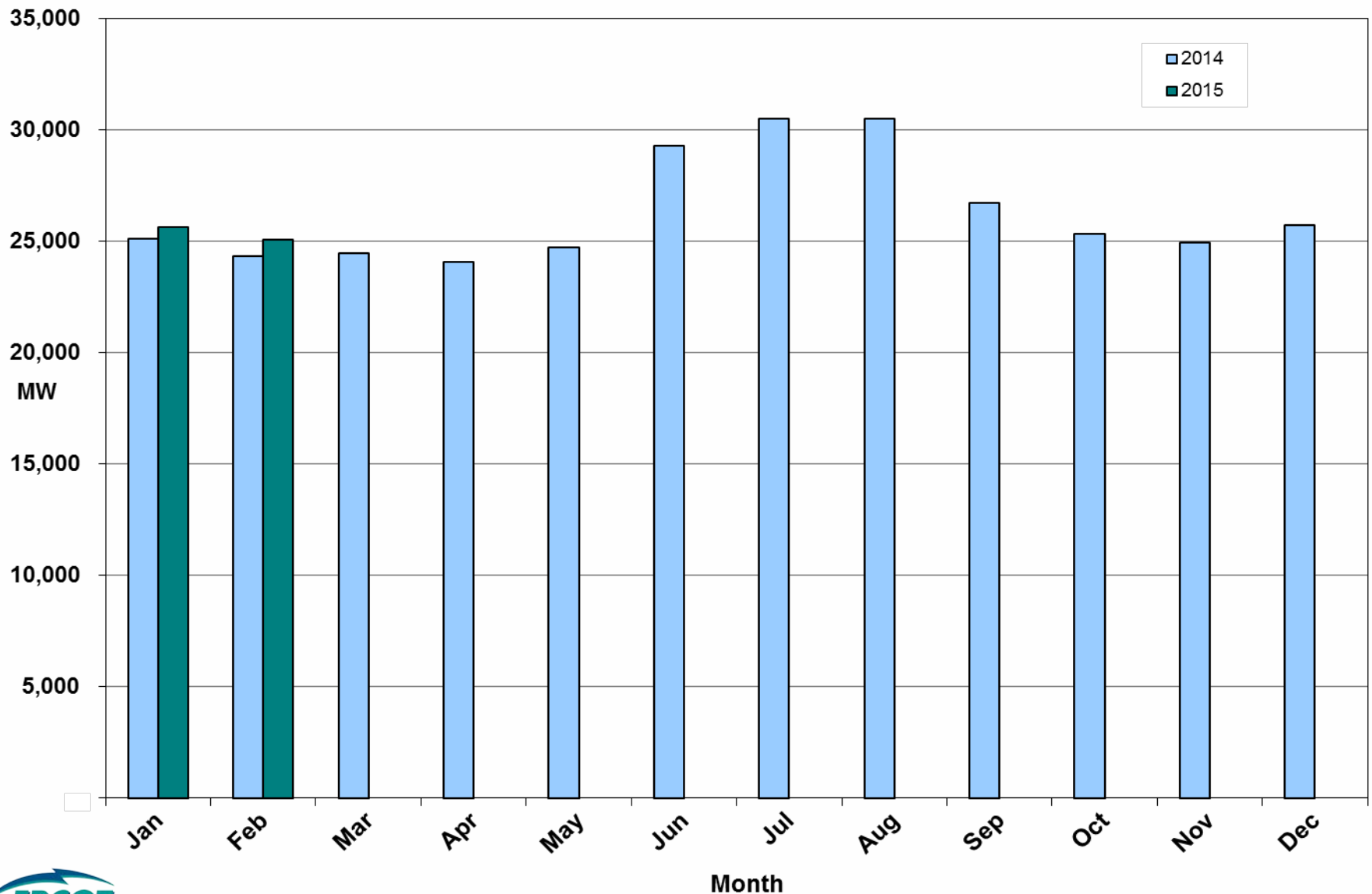
ERCOT's CPS1 Monthly Performance – February 2015



Monthly Peak Actual Demand – February 2015



Monthly Minimum Actual Demand – February 2015



Day-Ahead Load Forecast Performance – February 2015

**Mean Absolute Percent Error (MAPE) for ERCOT Mid-Term Load Forecast (MTLF)
Run at 14:00 Day Ahead**

	2012 MAPE	2013 MAPE	2014 MAPE	2015 MAPE	February 2015 MAPE	
Average Annual MAPE	3.02	2.86	2.83	3.41	3.38	
Lowest Monthly MAPE	2.51	2.07	2.15	3.38	Lowest Daily MAPE	1.07 Feb – 21
Highest Monthly MAPE	3.49	3.50	3.70	3.44	Highest Daily MAPE	8.95 Feb - 16

Reliability Unit Commitment (RUC) Capacity by Weather Zone – February 2015

There were no HRUC
or DRUC commitments
for this month.

Generic Transmission Constraints (GTCs) – February 2015

GTCs	Feb 14 Days GTCs	Dec 14 Days GTCs	Jan 15 Days GTCs	Feb 15 Days GTCs	Last 12 Months Total Days (Mar14 – Feb15)
North – Houston	0	0	0	0	0
West – North	0	0	0	0	6
Valley Import	2	0	2	0	8
SOP110	0	0	0	0	10

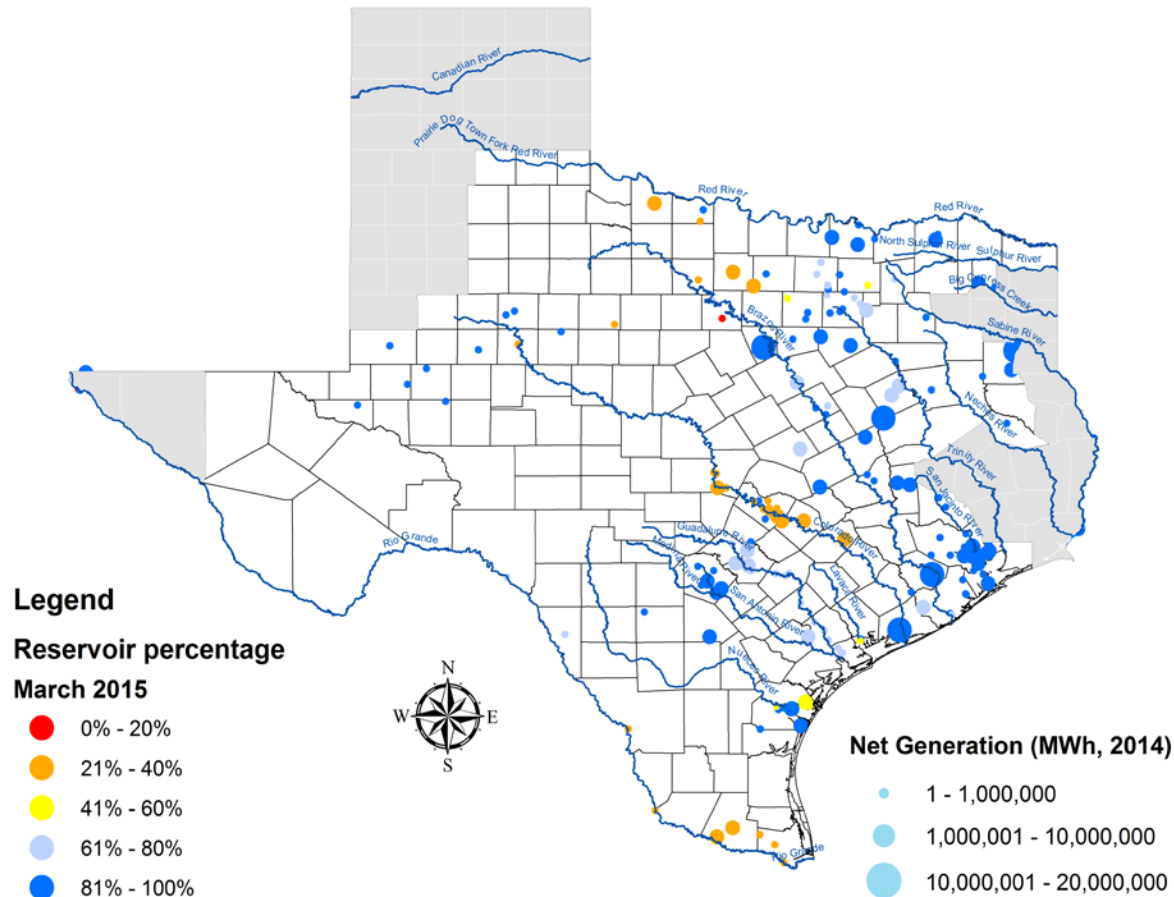
GTC: A transmission flow limit more constraining than a Transmission Element's normal limit established to constrain flow between geographic areas of the ERCOT Transmission System that is used to enforce stability and voltage constraints that cannot be modeled directly in ERCOT's transmission security analysis applications.

Note: This table lists how many times a constraint has been activated to avoid exceeding a GTC limit, it does not imply an exceedance of the GTC occurred.

Advisories and Watches - February 2015

- One advisory due to cold weather
 - Issued on 2/20
- One Transmission Watch due to forced transmission outage
 - Issued on 2/22
- One OCN due to new Generic Transmission Constraint
 - Issued on 2/27
- One advisory due to postponing of the DAM Solution
 - Issued on 2/28

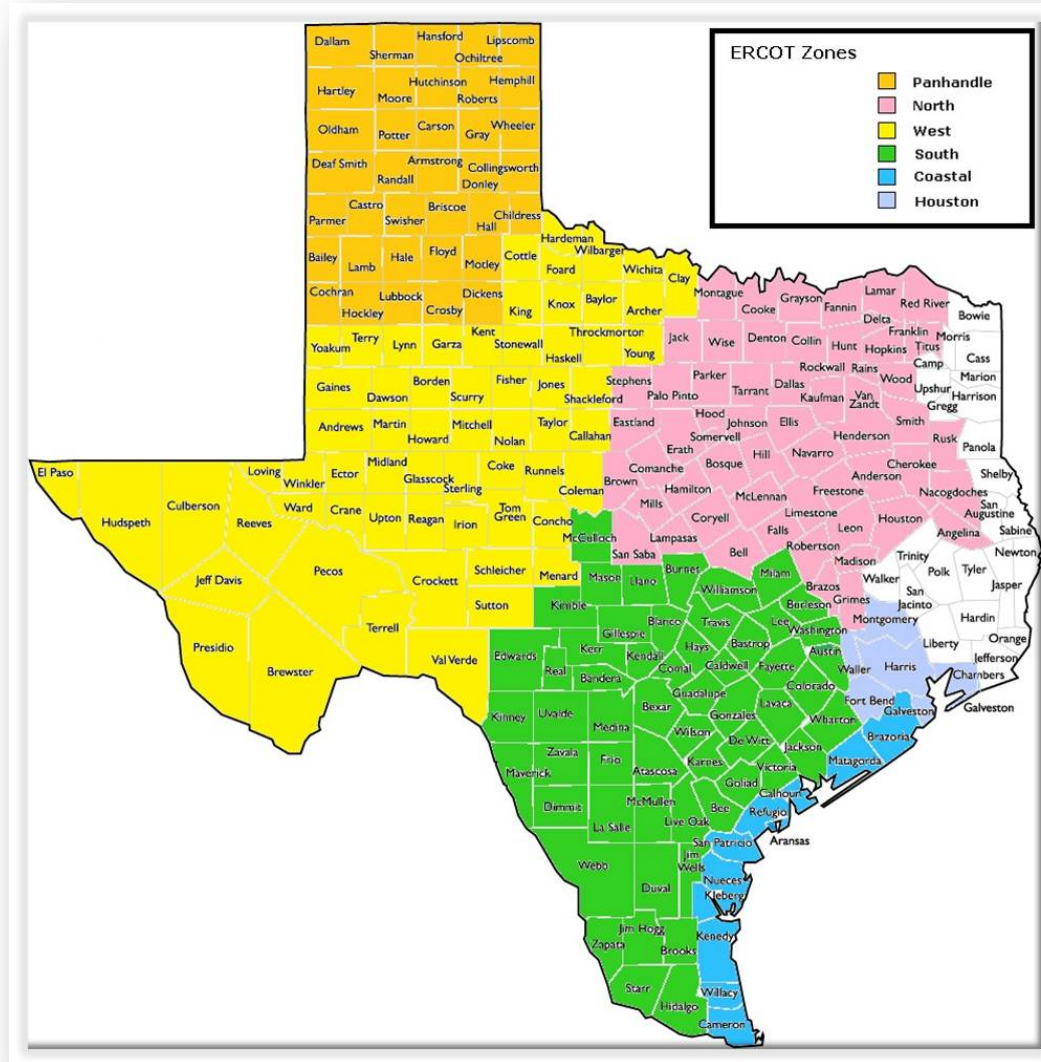
Lake Levels Update – March 1, 2015



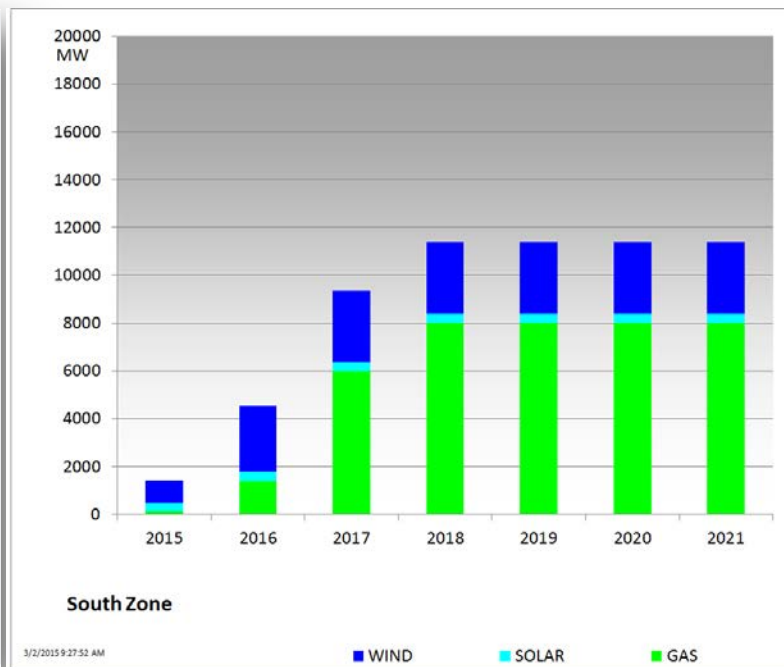
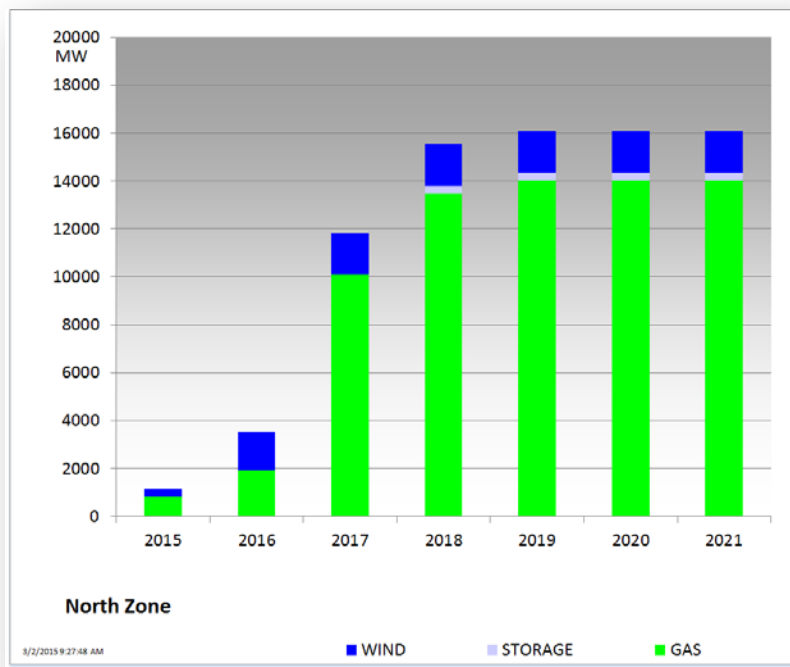
Planning Summary – February 2015

- ERCOT is currently tracking 245 active generation interconnection requests totaling over 63,000 MW. This includes over 25,300 MW of wind generation.
- ERCOT is currently reviewing proposed transmission improvements with a total cost of \$421.3 Million.
- Transmission Projects endorsed in 2015 total \$103.8 Million.
- All projects (in engineering, routing, licensing, and construction) total approximately \$6.15 Billion.
- Transmission Projects energized in 2015 total about \$32.8 Million.

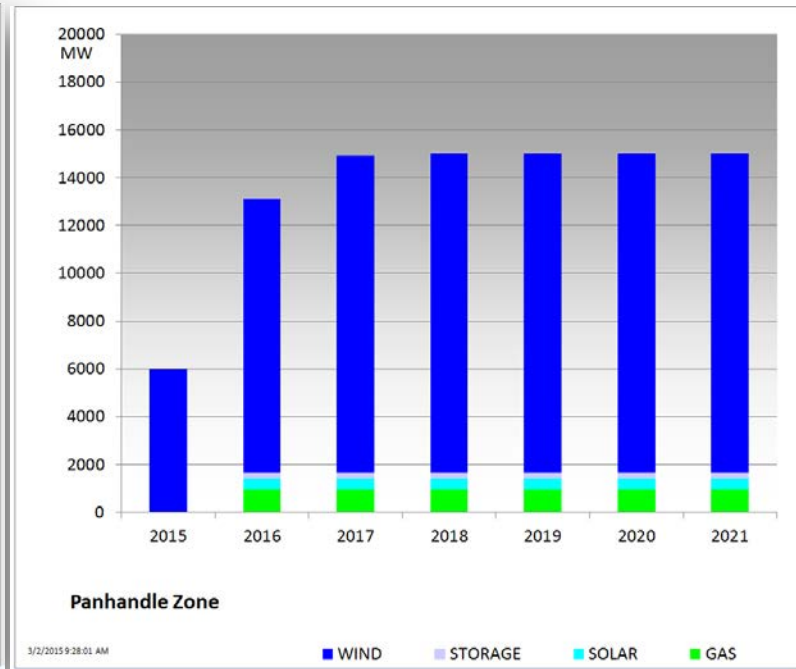
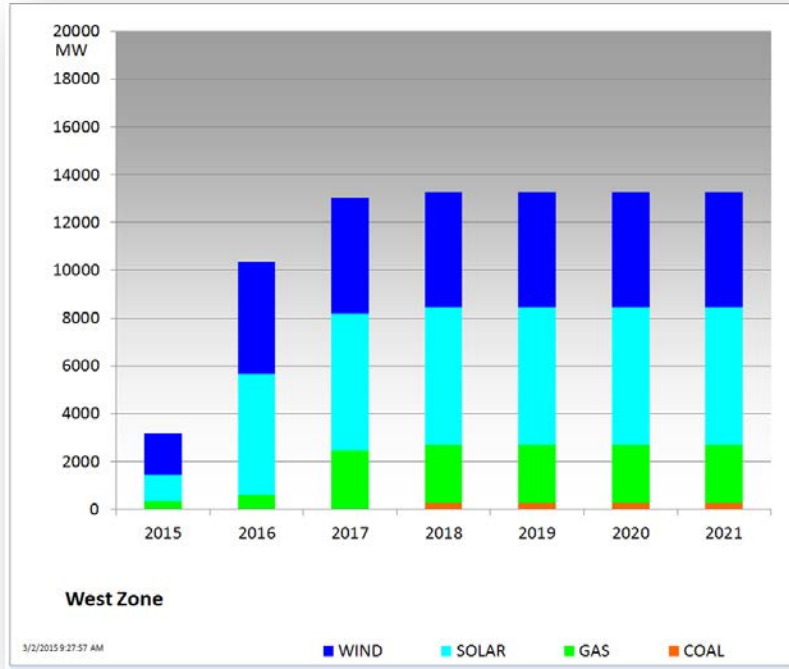
Cumulative Installed MW Capacity of Interconnection Requests by Zone – February 2015



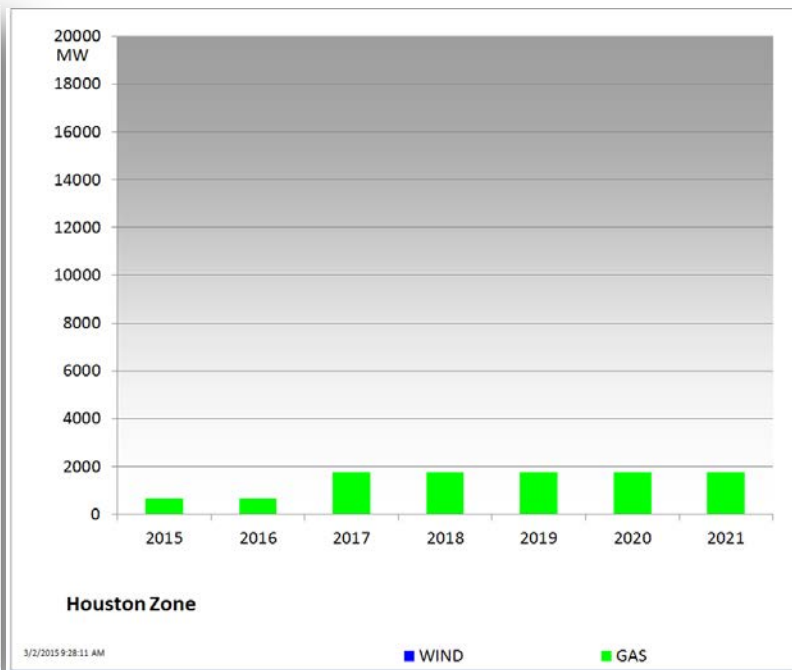
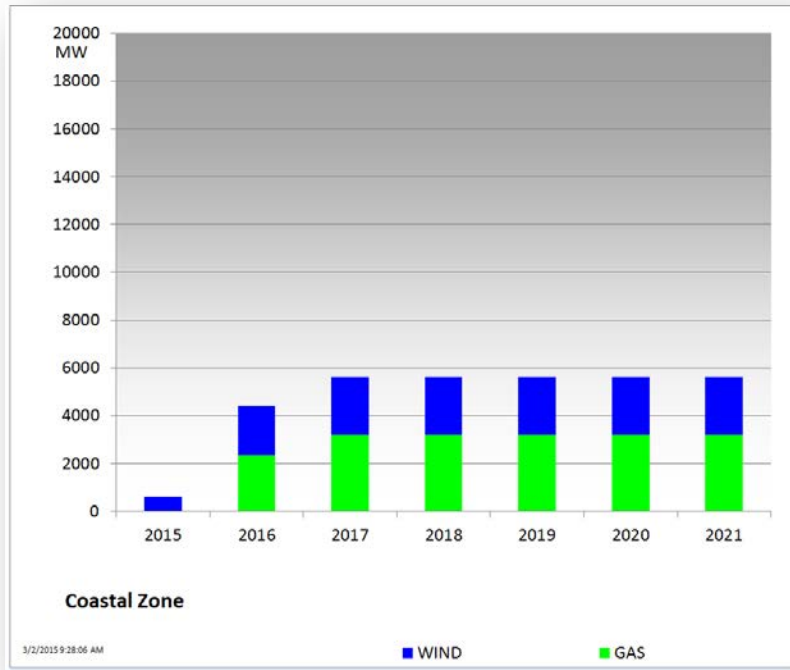
Cumulative Installed MW Capacity of Interconnection Requests by Zone – February 2015



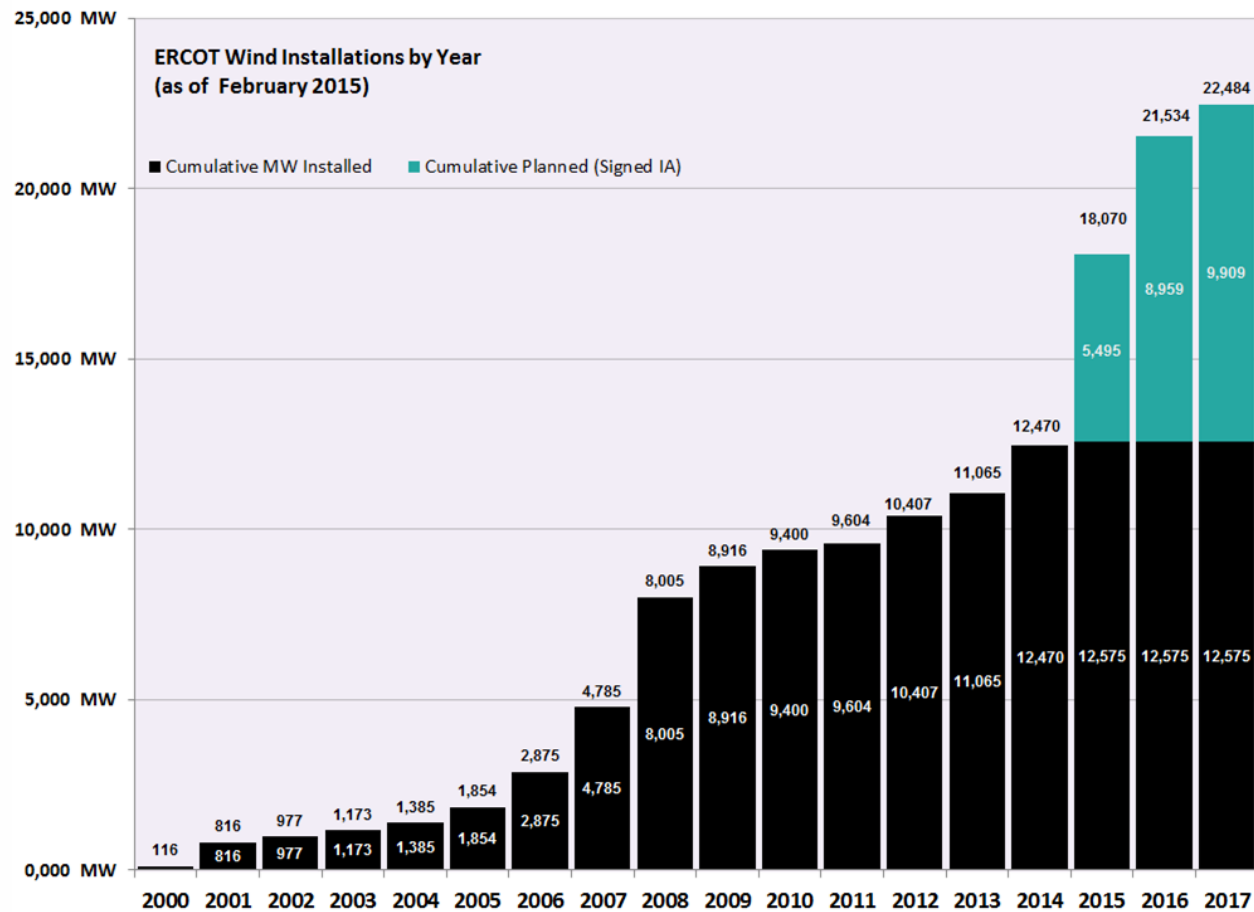
Cumulative Installed MW Capacity of Interconnection Requests by Zone – February 2015



Cumulative Installed MW Capacity of Interconnection Requests by Zone – February 2015



Wind Generation – February 2015



The data presented here is based upon the latest registration data provided to ERCOT by the resource owners and can change without notice. Any capacity changes will be reflected in current and subsequent years' totals. Scheduling delays will also be reflected in the planned projects as that information is received.

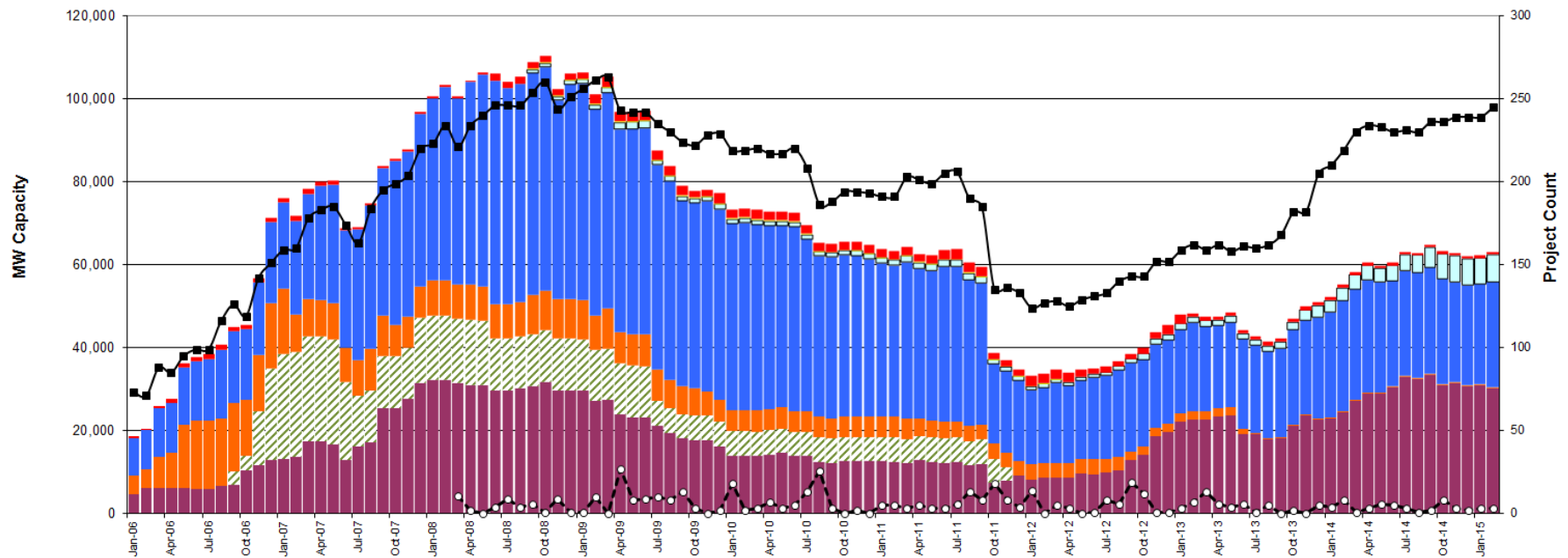
This chart reflects planned units in the calendar year of submission rather than installations by peak of year shown.

Generation Interconnection Activity by Fuel – February 2015

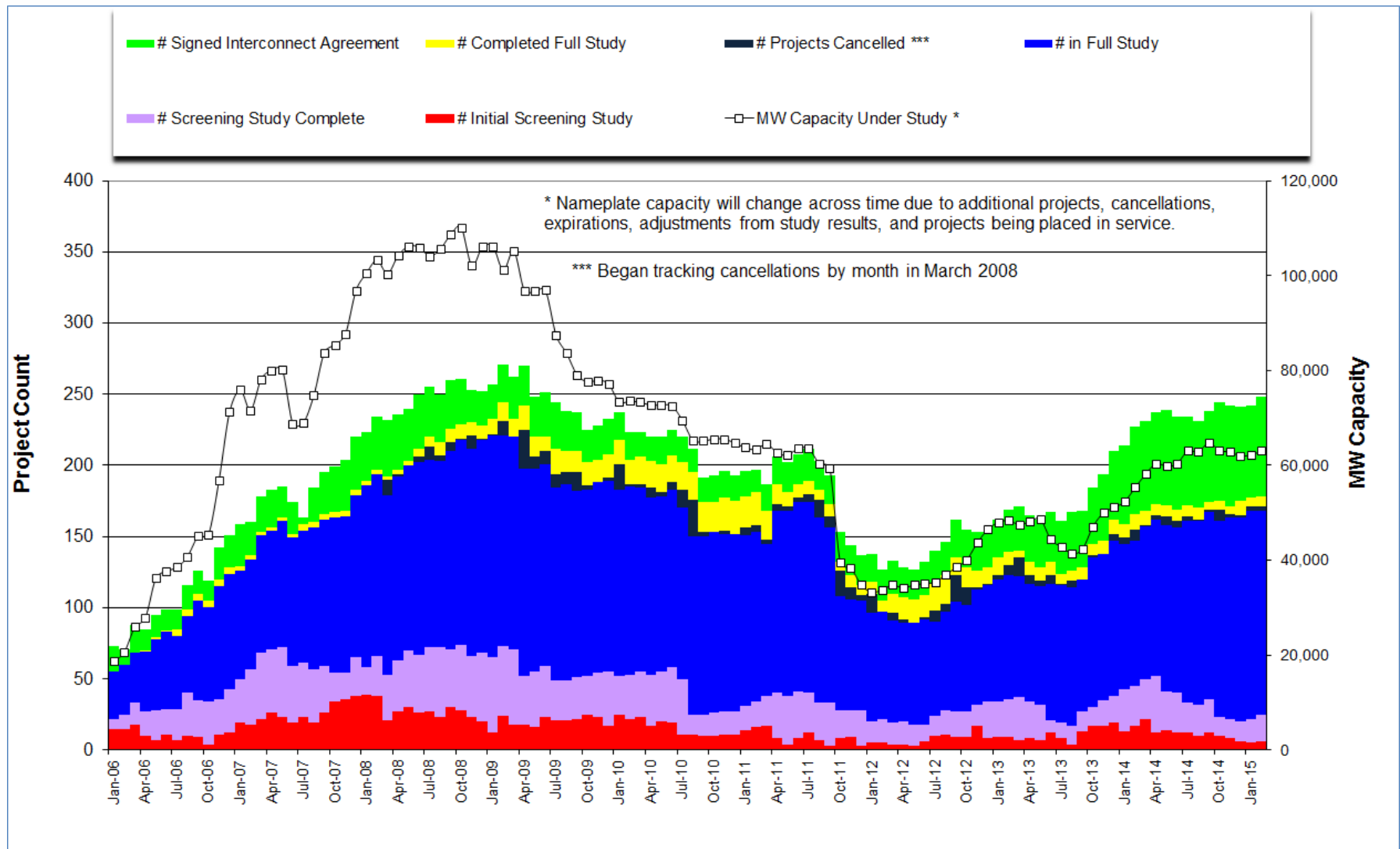
■ MW Natural Gas ▨ MW Nuclear ■ MW Coal ■ MW Wind ■ MW Solar *
■ MW Biomass * ■ MW Other —■— Total # of Projects -○- # of Cancelled Projects

*Prior to September 2008, Category "Other" included "Solar" and "Biomass"

Projects in all phases of interconnection study are reflected in this graph
Project cancellation tracking by month began in March 2008

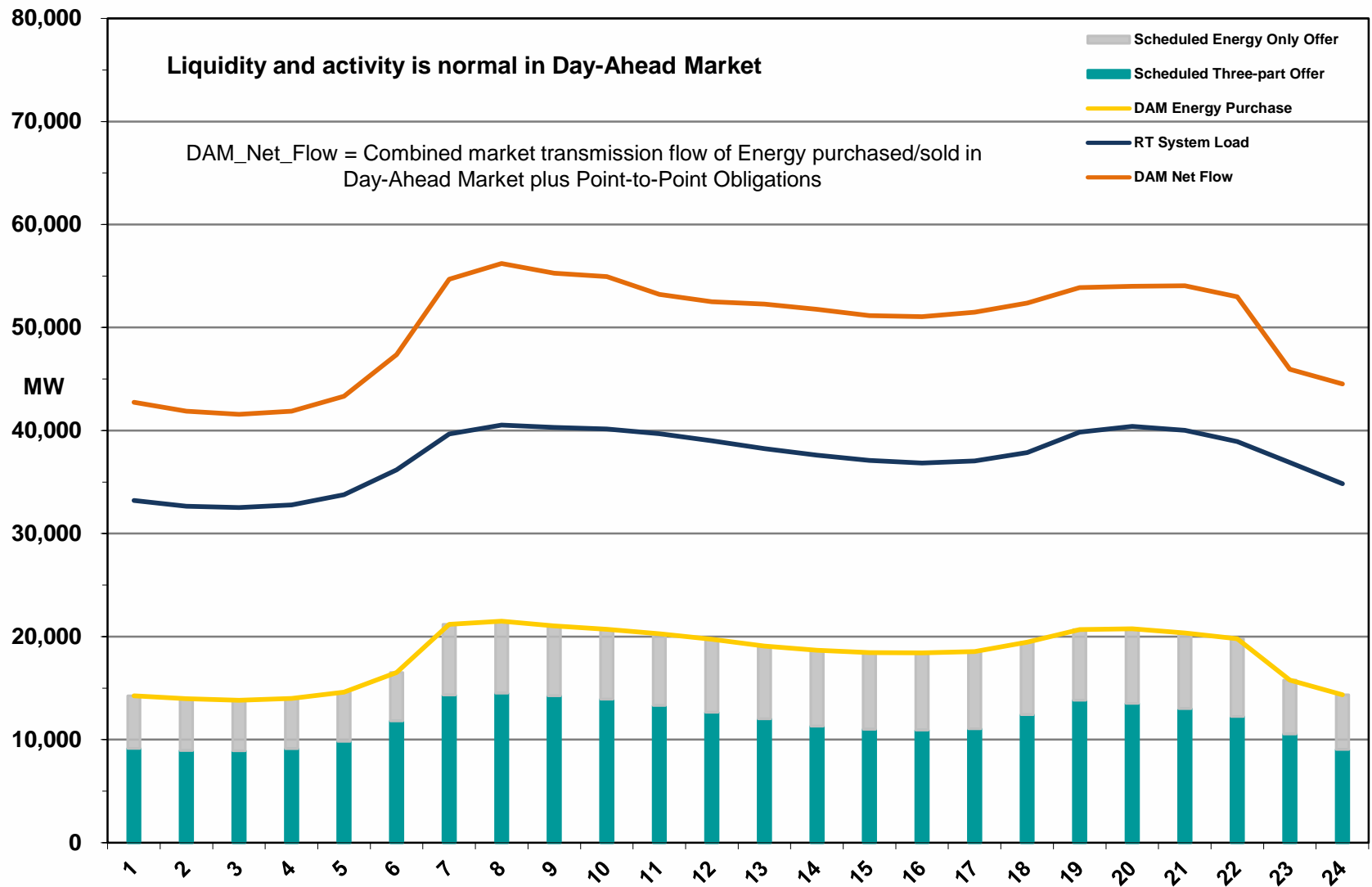


Generation Interconnection Activity by Project Phase – Feb 2015

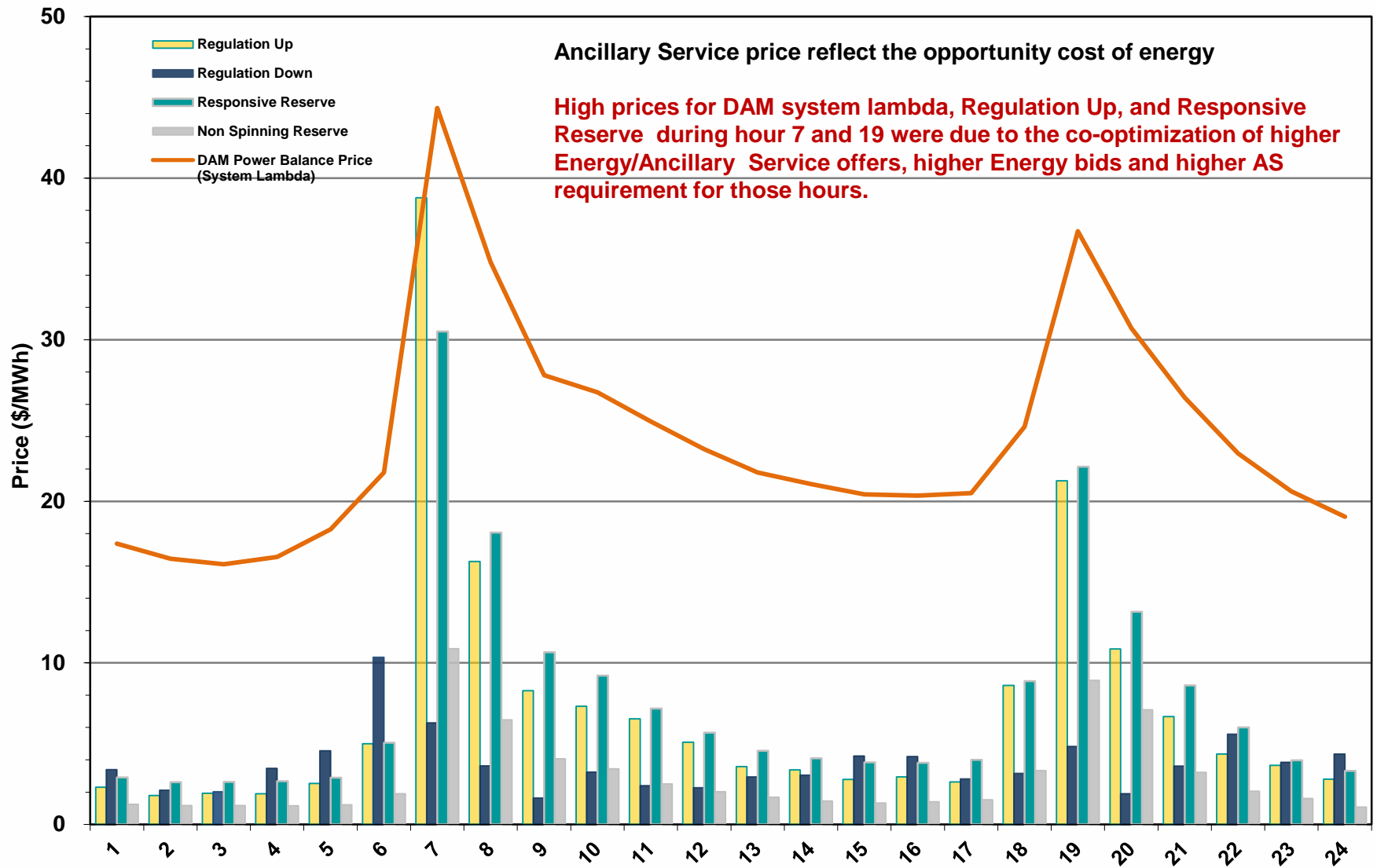


Market Operations

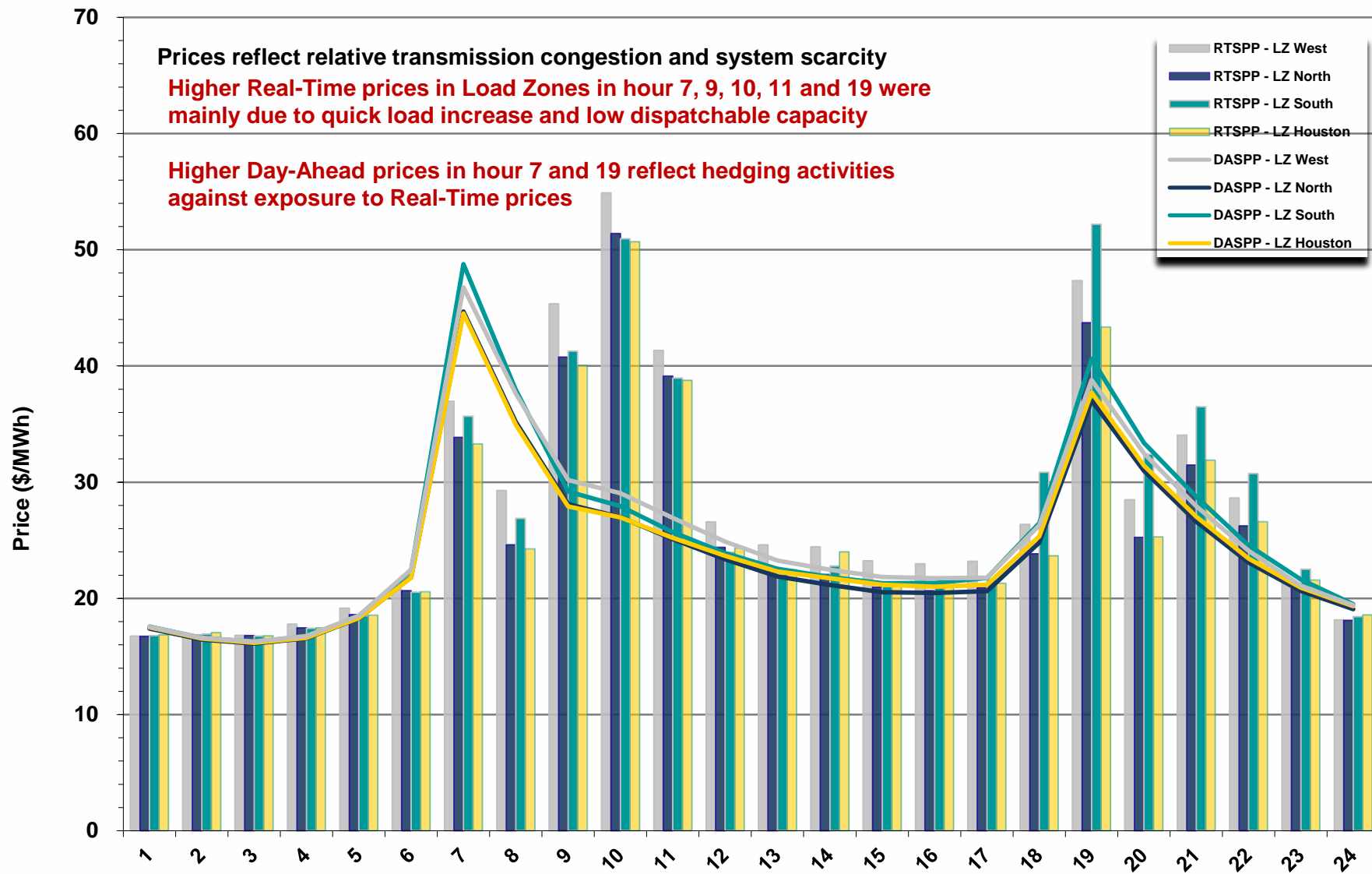
Day-Ahead Schedule (Hourly Average) – February 2015



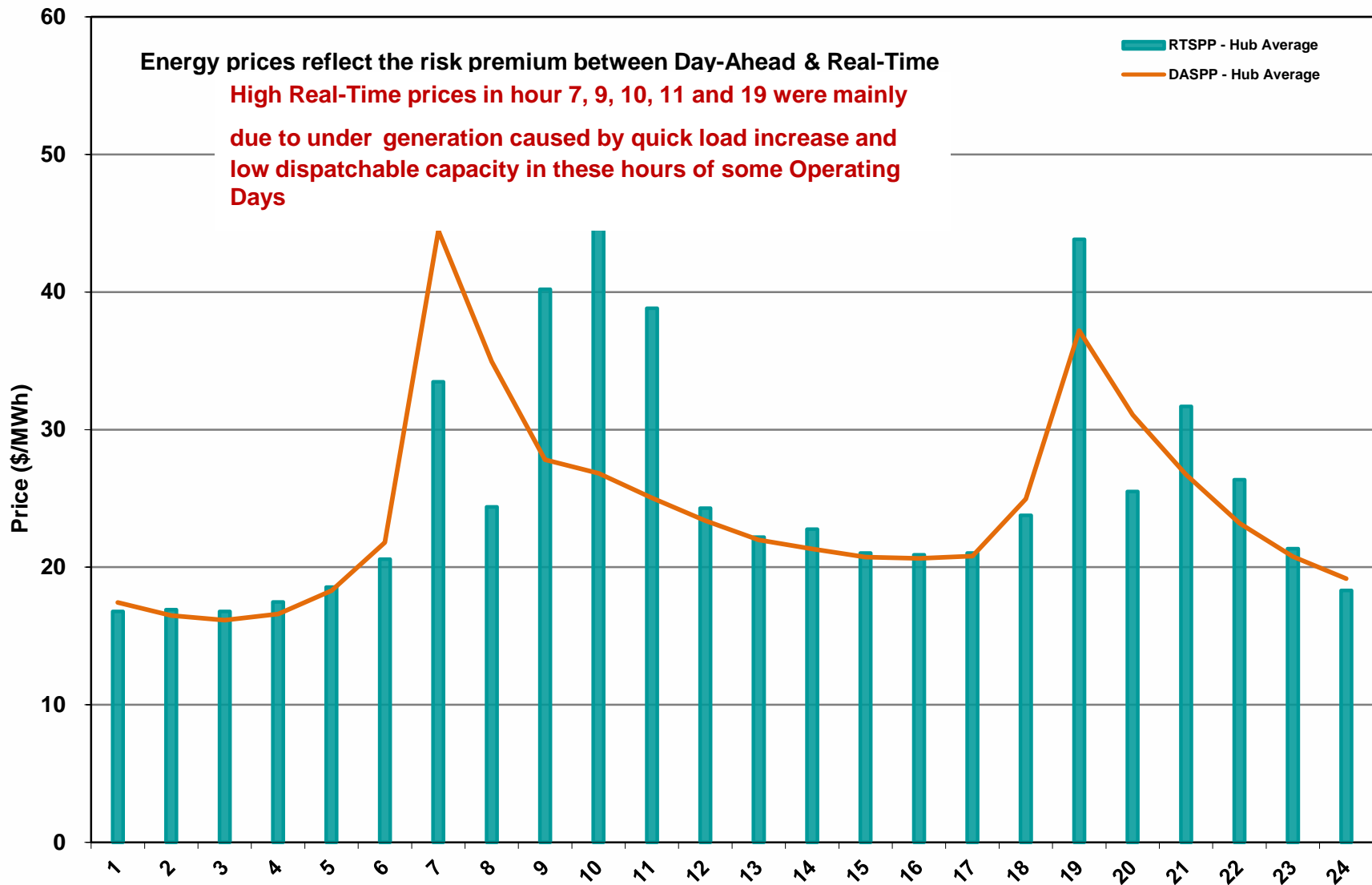
Day-Ahead Electricity And Ancillary Service Hourly Average Prices – February 2015



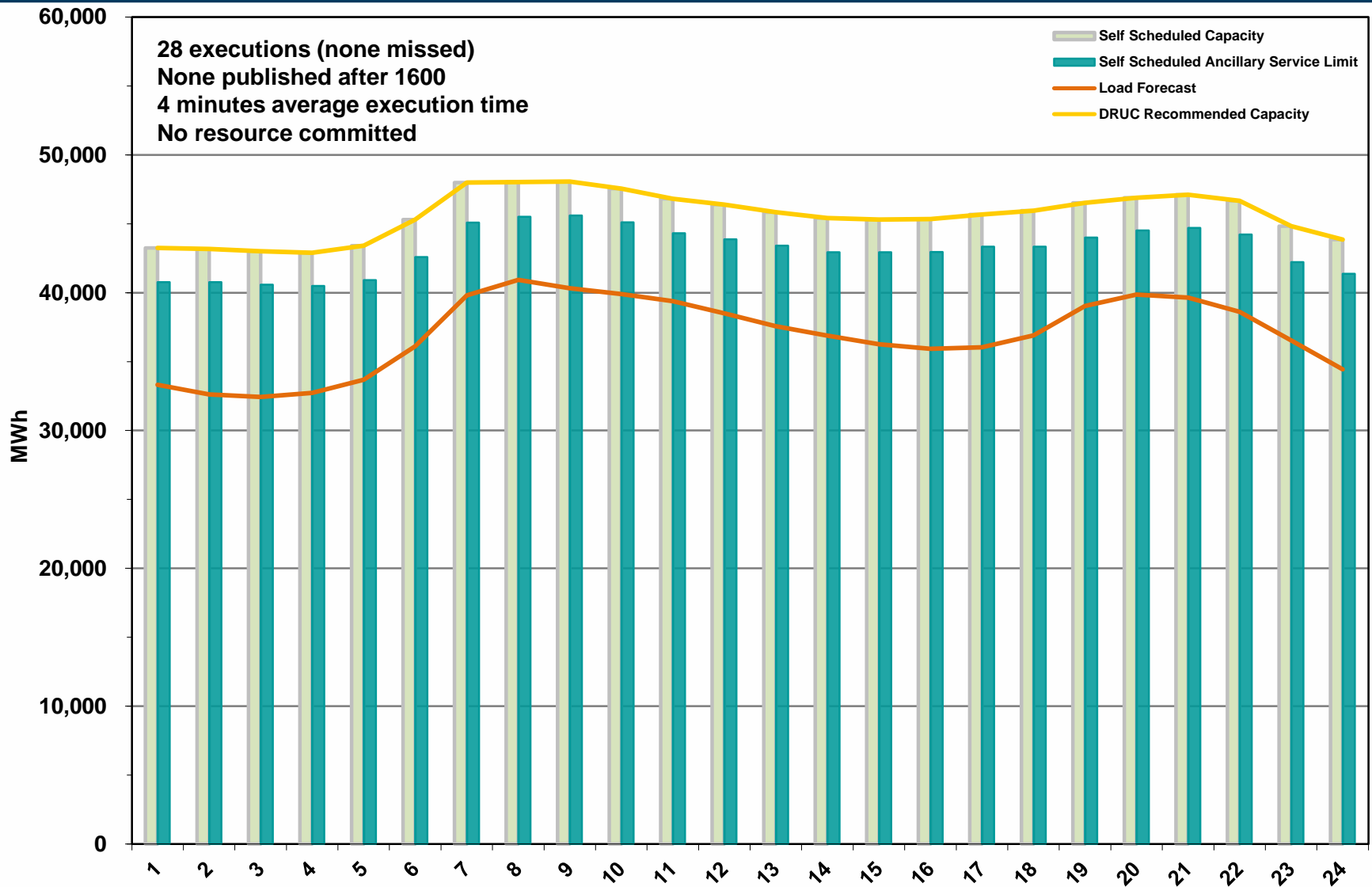
Day-Ahead Vs Real-Time Load Zone SPP (Hourly Average) – February 2015



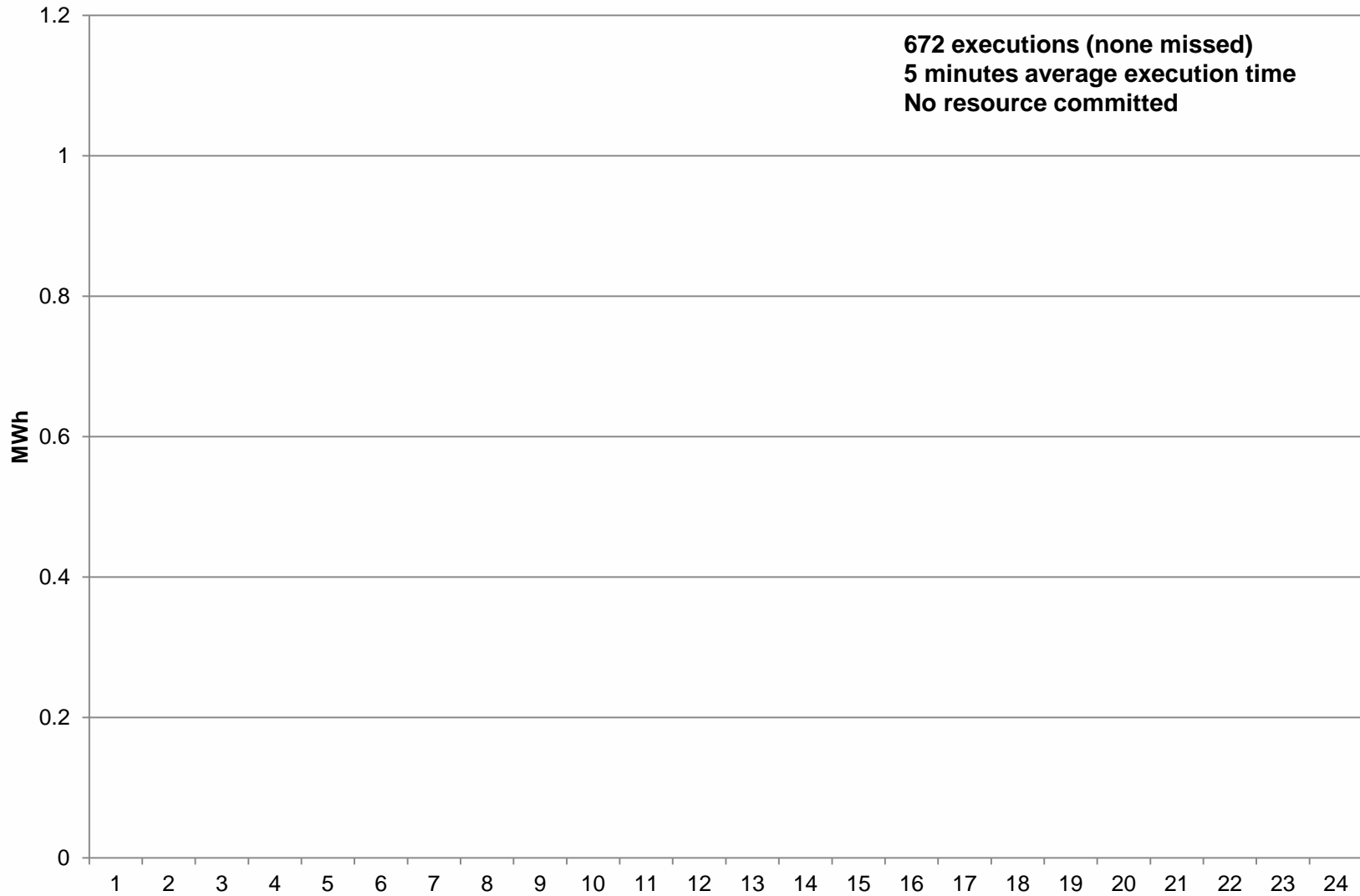
Day-Ahead Vs Real-Time Hub Average SPP (Hourly Average) – Feb 2015



DRUC Monthly Summary (Hourly Average) – February 2015



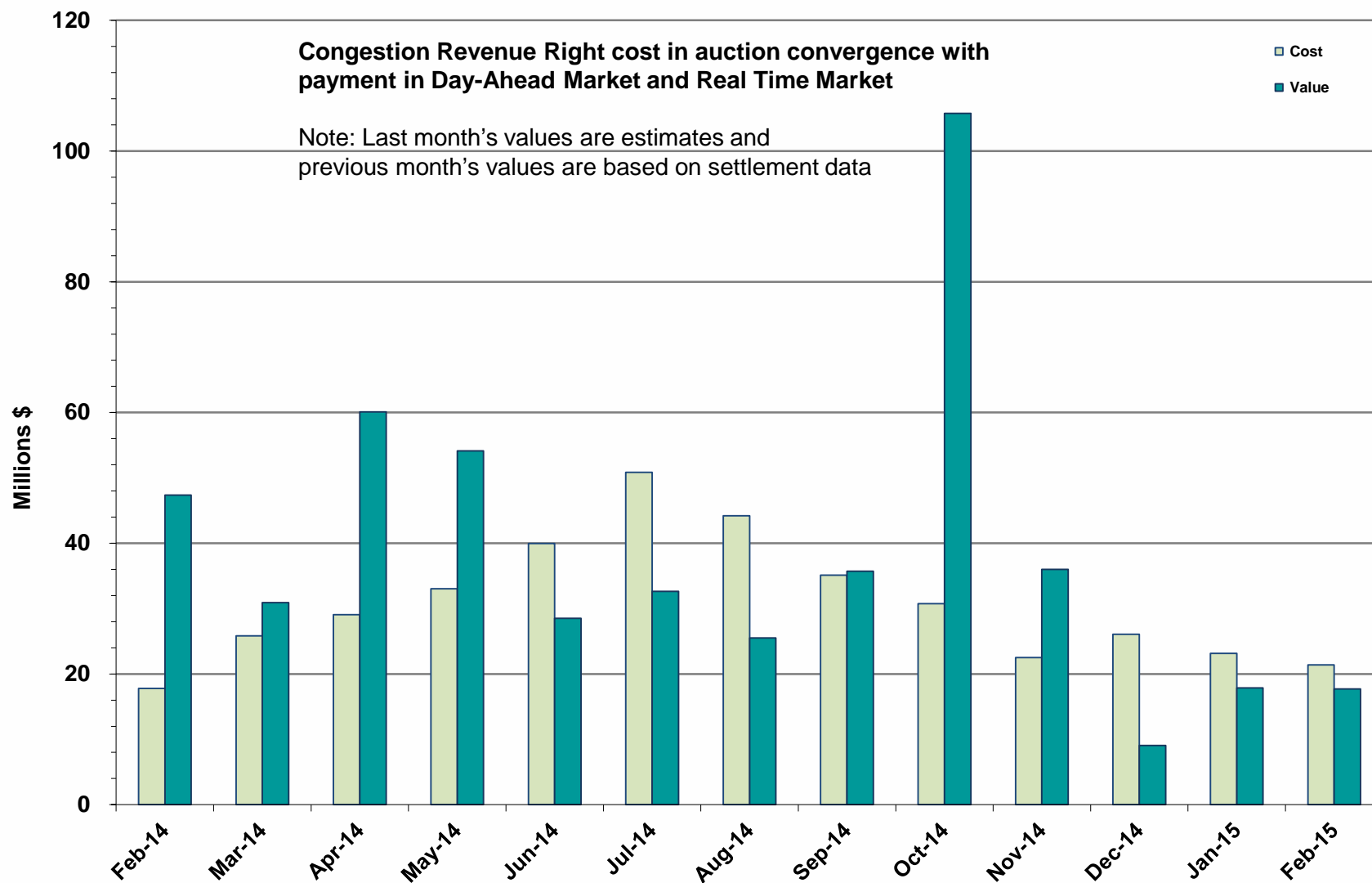
HRUC Monthly Summary – February 2015



Non-Spinning Reserve Service Deployment – February 2015

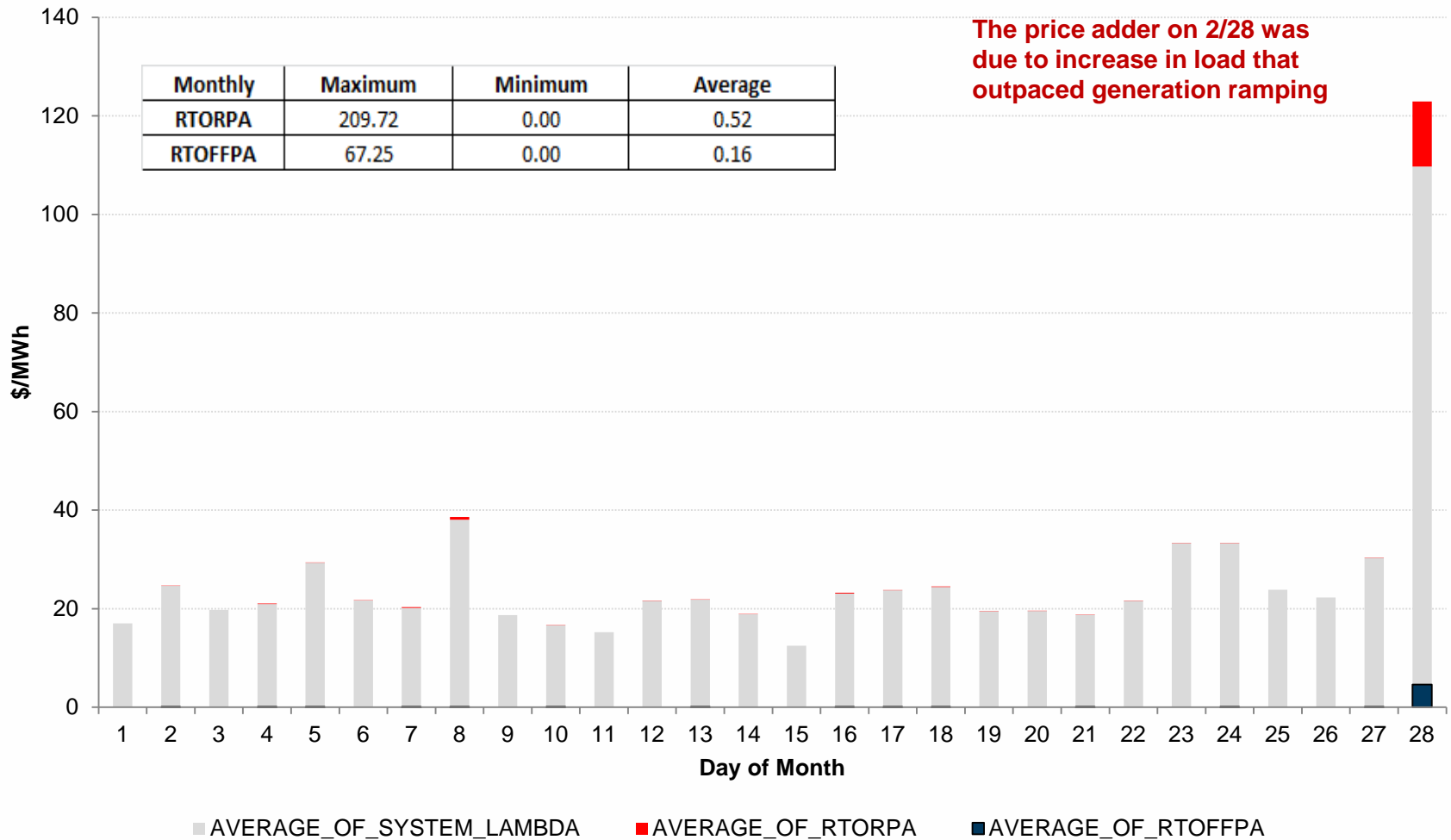
Deployment Start Time	Deployment End Time	Deployment Duration (Hours)	Max Deployment (MW)	Reason
None				

CRR Price Convergence – February 2015



ORDC Price Adder (Daily Average) – February 2015

Average Daily Real-Time System Lambda, Real-Time On-Line Reserve Price Adder (RTORPA), and Real-Time Offline Reserve Price Adder (RTOFFPA) - February 2015



ERS Procurement for February 2015 – May 2015

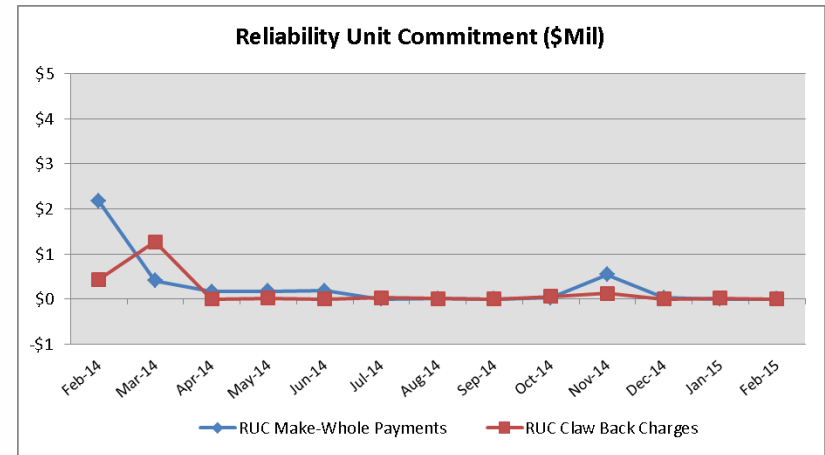
	BH1	BH2	BH3	NBH
ERS-10 MW Procured	598.139	576.648	570.842	539.822
ERS-30 MW Procured	349.356	347.416	310.620	275.695
Total MW Procured	947.495	924.064	881.462	815.517
Clearing Price	\$15.61	\$2.63	\$11.10	\$3.00

BH1 - Business Hours 1
BH2 - Business Hours 2
BH3 - Business Hours 3
NBH - Non-Business Hours

HE 0900 through 1300, Monday thru Friday except ERCOT Holidays
HE 1400 through 1600, Monday thru Friday except ERCOT Holidays
HE 1700 through 2000, Monday thru Friday except ERCOT Holidays
All other hours

Reliability Services – February 2015

Reliability Unit Commitment (RUC)	\$ in Millions
RUC Make-Whole Payments	\$0.00
RUC Clawback Charges	\$0.00
RUC Commitment Settlement	\$0.00
RUC Capacity Short Charges	\$0.00
RUC Make-Whole Uplift	\$0.00
RUC Commitment Cost Allocation	\$0.00
RUC Decommitment Payments	\$0.00



RUC Make-Whole Payments decreased in February. RUC Clawback Charges were \$0.00M.

There was \$0.00M allocated directly to load in February 2015, compared to:

- \$0.02M credit in January 2015
- \$0.41M credit in February 2014

Capacity Services – February 2015

Capacity Services	\$ in Millions
Regulation Up Service	\$2.50
Regulation Down Service	\$1.18
Responsive Reserve Service	\$12.65
Non-Spinning Reserve Service	\$2.93
Black Start Service	\$0.56
Voltage Services - Reactive Power	\$0.00
Voltage Services - Lost Opportunity	\$0.00
Total Charges	\$19.82

Capacity Services costs increased from last month and decreased from February 2014.

February 2015 cost was \$19.82M, compared to:

- A charge of \$18.20M in January 2015
- A charge of \$60.89M in February 2014

Energy Settlement – February 2015

Day-Ahead Market Energy Settlement	\$ in Millions
Energy Purchases	\$319.40
Point to Point Obligation Purchases	\$14.11
RMR Day-Ahead Revenue	\$0.00
Energy Sales	(\$313.75)
Day-Ahead Congestion Rent	\$19.76
Day-Ahead Market Make-Whole Payments	(\$0.30)

Both Day-Ahead Market and Real-Time Market energy settlement activity decreased from last month and decreased from February 2014.

Real-Time Market Energy Settlement	\$ in Millions
Energy Imbalance at a Resource Node	(\$419.76)
Energy Imbalance at a Load Zone	\$575.49
Energy Imbalance at a Hub	(\$137.06)
Real Time Congestion from Self Schedules	\$0.49
Block Load Transfers and DC Ties	(\$3.15)
Impact to Revenue Neutrality	\$16.01
Emergency Energy Payments	(\$0.08)
Base Point Deviation Charges	\$0.34
Real-Time Metered Generation (MWh in millions)	25.05

Congestion Revenue Rights (CRR) – February 2015

	\$ in Millions
Annual Auction	(\$15.37)
Monthly Auction	(\$5.88)
Total Auction Revenue	(\$21.25)
Day-Ahead CRR Settlement	(\$17.71)
Day-Ahead CRR Short-Charges	\$0.13
Day-Ahead CRR Short-Charges Refunded	(\$0.13)
Real-Time CRR Settlement	\$0.00
Real-Time CRR Short-Charges	\$0.00
Real-Time CRR Short-Charges Refunded	\$0.00
Total CRR Funding	(\$17.71)
Day-Ahead Point to Point Obligations Settlement	\$14.11
Real-Time Point to Point Obligation Settlement	(\$16.21)
Net Point to Point Obligation Settlement	(\$2.10)

Congestion Revenue Rights were fully funded and excess funds were deposited into the CRR Balancing Account Fund.

Point to Point Obligations settled with a net payment of \$2.10M compared to a net payment of \$2.36M last month.

CRR Balancing Account Fund – February 2015

CRR Balancing Account Fund	\$ in Millions
Beginning Balance for the Month	\$1.77
CRR Balancing Account Credit Total	\$2.18
CRR PTP Option Award Charges	\$0.05
Day-Ahead CRR Short-Charges Refunded	(\$0.13)
Total Fund Amount	\$3.87

ERCOT implemented the rolling CRR Balancing Account Fund beginning with Operating Month December 2014. The month of February 2015 closed with \$2,096,606 in excess Day-Ahead congestion rent which was deposited into the Fund.

As of February 2015, the amount available in the CRR Balancing Account Fund is \$3,864,535.

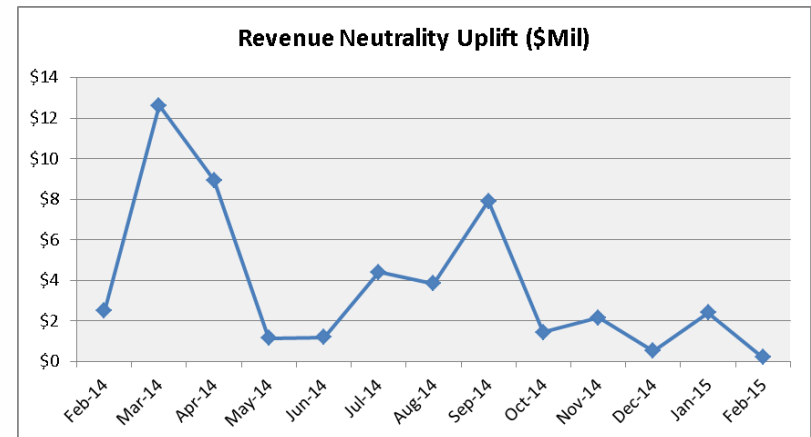
Revenue Neutrality – February 2015

Revenue Neutrality Settlement	\$ in Millions
Real-Time Point to Point Obligation Settlement	(\$16.21)
Real-Time Point to Point Options and Options with Refund Settlement	\$0.00
Real-Time Energy Imbalance Settlement	\$18.66
Real-Time Congestion from Self-Schedules Settlement	\$0.49
DC Tie & Block Load Transfer Settlement	(\$3.15)
Charge to Load	\$0.21

Revenue Neutrality charges to load decreased compared to last month and to February 2014.

February 2015 was a charge of \$0.21M, compared to:

- \$2.39M charge in January 2015
- \$2.49M charge in February 2014



Real Time Ancillary Service Imbalance (ORDC) – February 2015

Real Time Ancillary Service Imbalance	\$ in Thousands
Real-Time AS Imbalance Payment Amount	(\$175.81)
Load Allocated AS Imbalance Revenue Neutrality Amount	\$175.81
Total Charges	\$175.81

Real-Time Ancillary Service Imbalance Settlements increased from January 2015 to February 2015. Total payments for the month of February 2015 were \$175,814 compared to a payment of \$52,700 in January 2015.

10 of the 28 days in February had settlement dollars equal to \$0 for the day.

All days were settled as a net credit to QSEs representing generation and as a charge to QSEs representing load.

The highest settlement occurred on February 28th. The total Real Time Ancillary Service Imbalance payments on that day were \$142,223.

Net Allocation to Load – February 2015

Market-Based Allocation

\$ in Millions

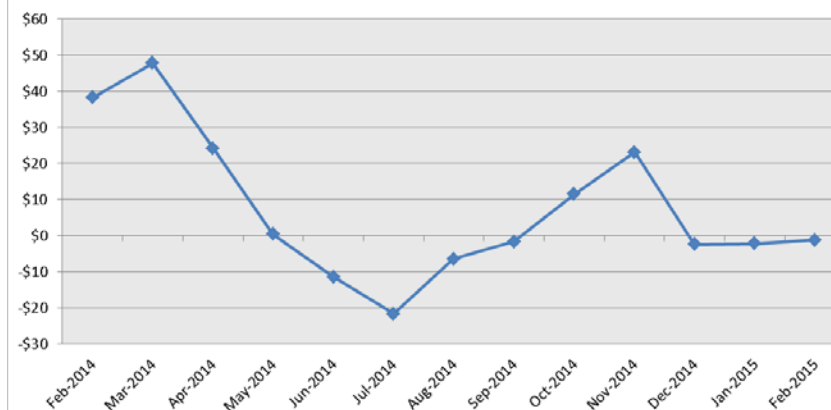
CRR Auction Revenue Disbursement Settlement	(\$21.25)
Balancing Account Proceeds Settlement	\$0.00
Net Reliability Unit Commitment Settlement	\$0.00
Ancillary Services Settlement	\$19.82
Reliability Must Run Settlement (incl. RMR for Capacity)	\$0.00
Real-Time Revenue Neutrality Settlement	\$0.21
Emergency Energy Settlement	\$0.08
Base Point Deviation Settlement	(\$0.34)
ORDC Settlement	\$0.18
Total	(\$1.30)
Fee Allocation	
ERCOT Administrative Fee Settlement	\$11.70
Net Allocated to Load	\$10.40

The charge for the net allocation to Load decreased from last month and from February of 2014.

February 2015 was a charge of \$10.40M, compared to:

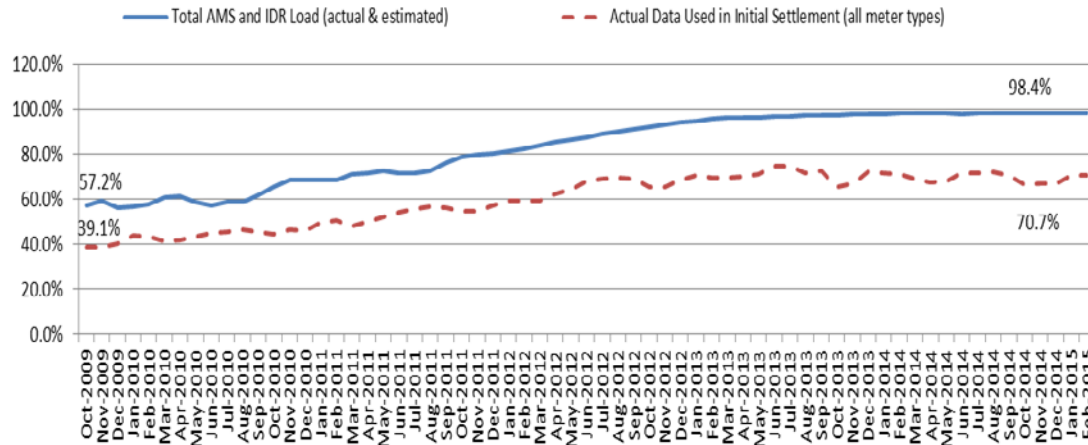
- A charge of \$11.19M in January 2015
- A charge of \$49.76M in February 2014

Market Based Fees Net Impact to Load



Advanced Meter Settlement Impacts – February 2015

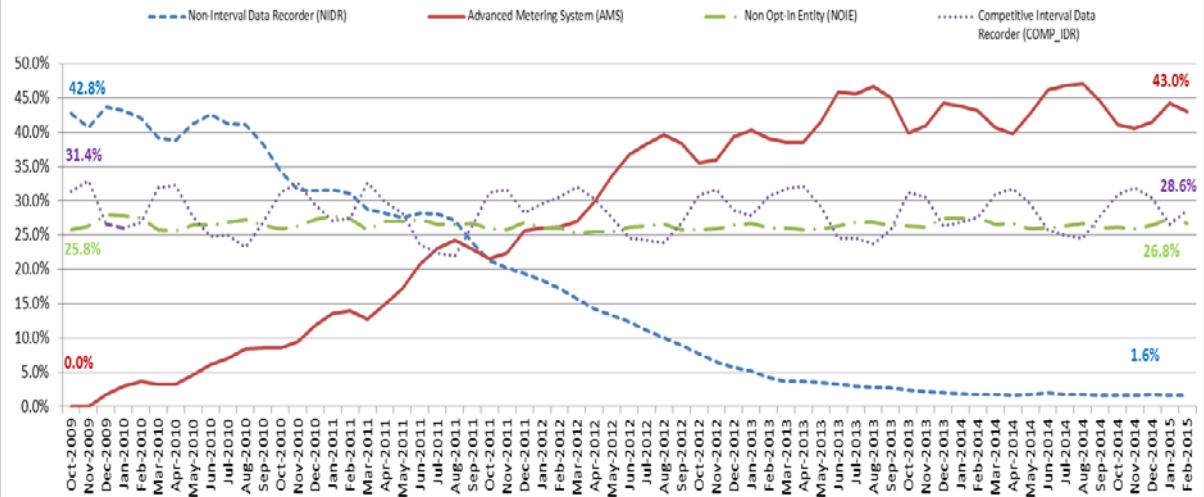
Percent Actual/Percent Interval Data Recorder (IDR)



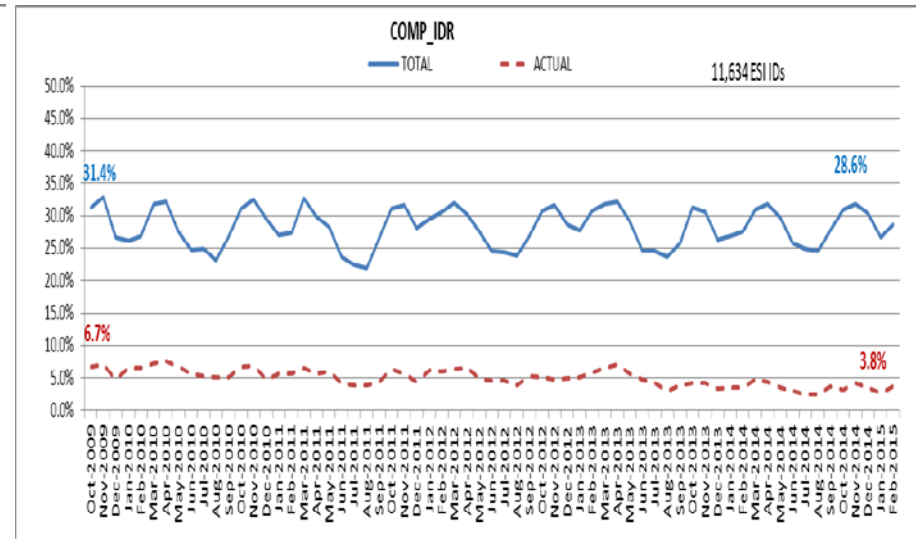
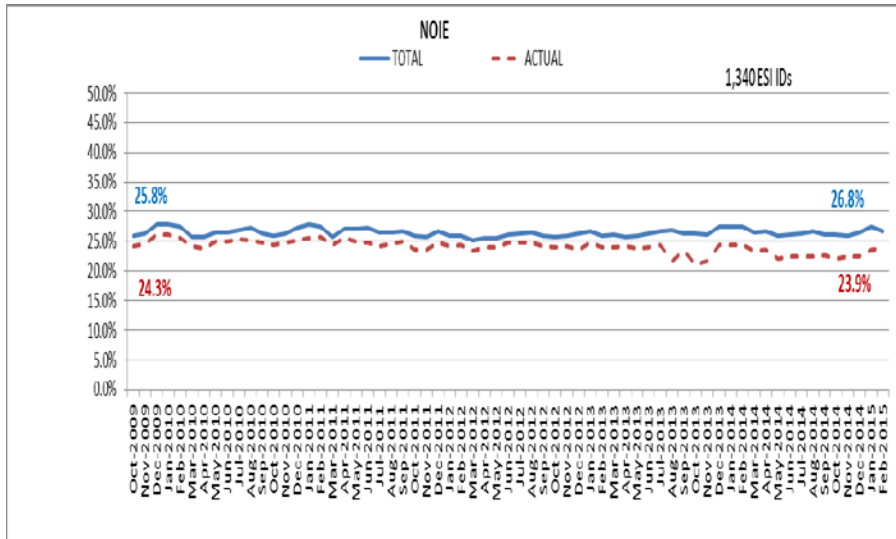
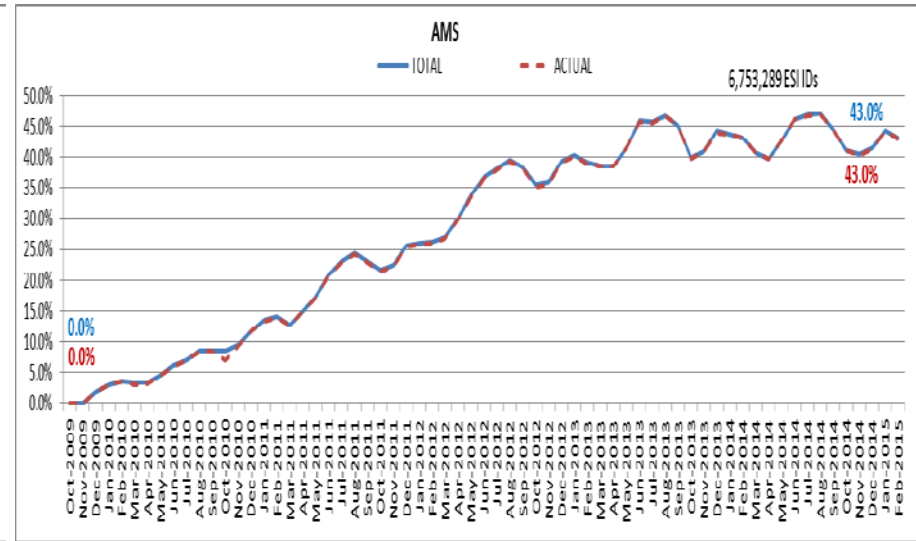
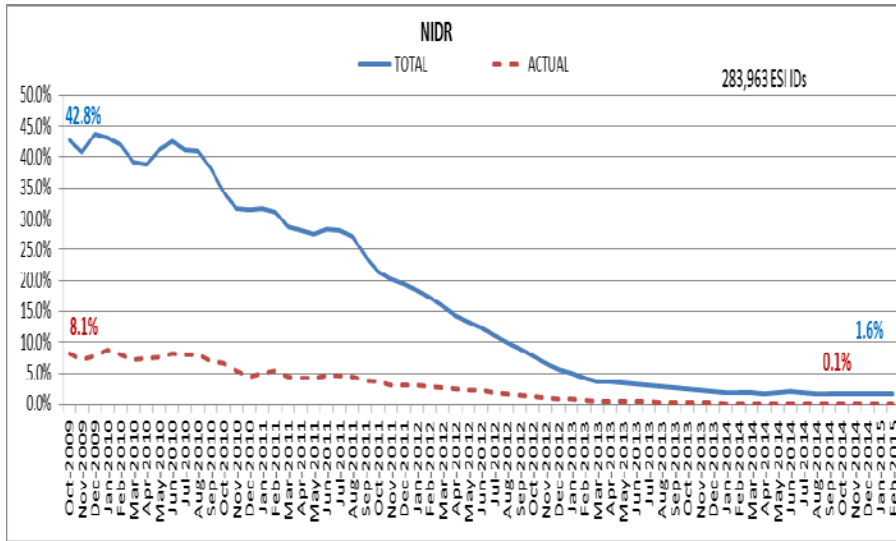
February 2015: At month end, settling 6.7M ESIIDs using Advanced Meter data.

February 2015: 98.4% of the load in ERCOT is settled with 15-min interval data (AMS, Competitive IDR, and NOIE IDR).

Percent of Load by Meter Type



ERCOT Wide Load Volumes by Meter Type – INITIAL Settlement – February 2015

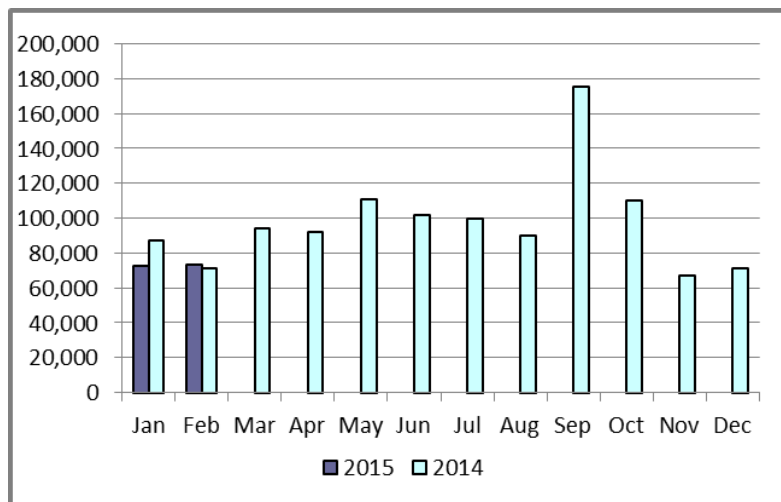


Retail Transaction Volumes – Summary – February 2015

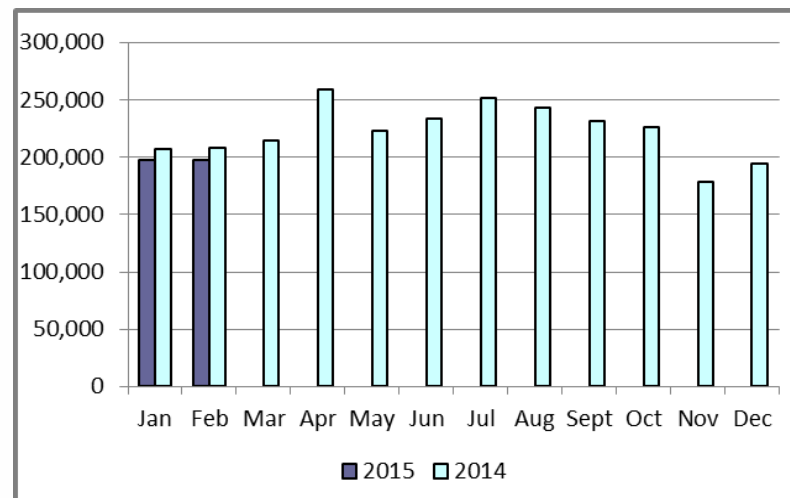
	Year-To-Date		Transactions Received	
Transaction Type	February 2015	February 2014	February 2015	February 2014
Switches	146,279	158,083	73,394	71,130
Acquisition	0	0	0	0
Move - Ins	395,790	415,219	197,765	208,160
Move - Outs	193,097	203,701	94,864	99,428
Continuous Service Agreements (CSA)	75,806	75,967	35,386	41,156
Mass Transitions	0	0	0	0
Total	810,972	852,970	401,409	419,874

Retail Transaction Volumes – Summary – February 2015

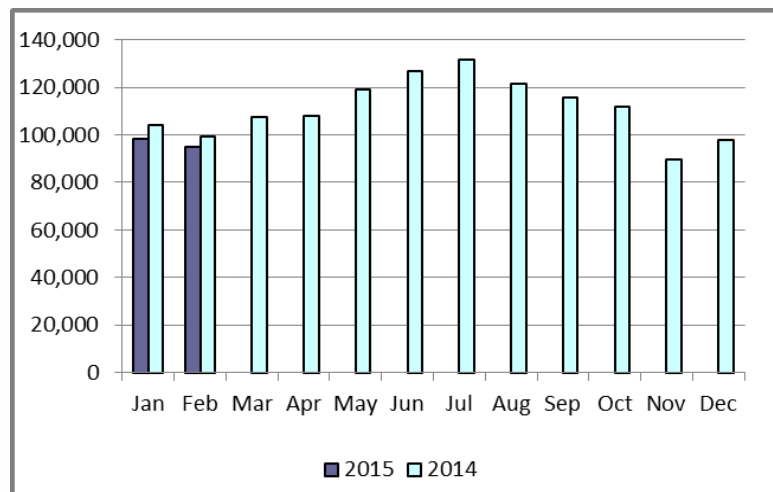
Switches/Acquisitions



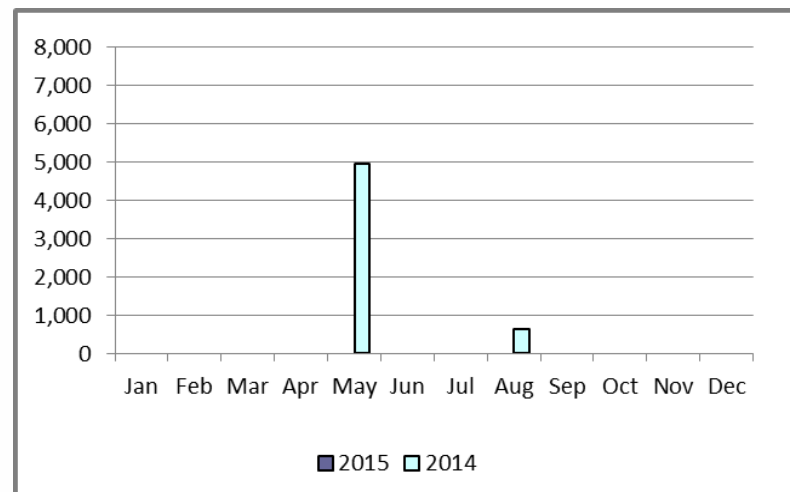
Move-Ins



Move-Outs

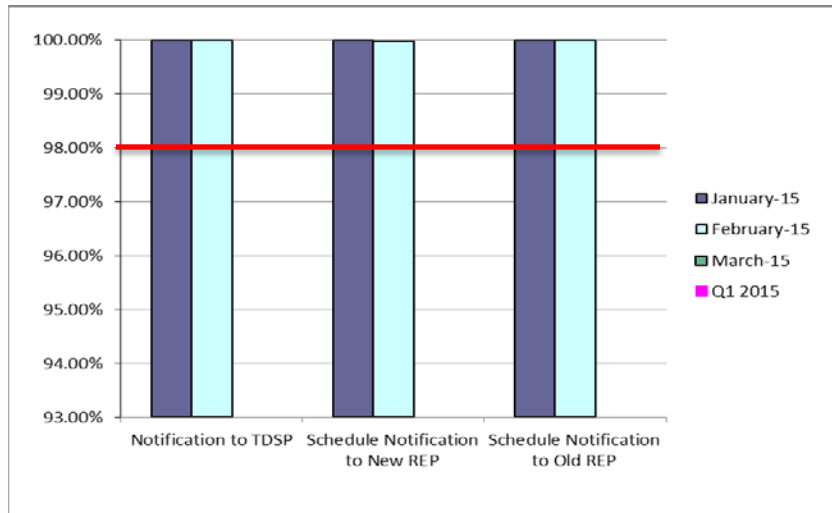


Mass Transition

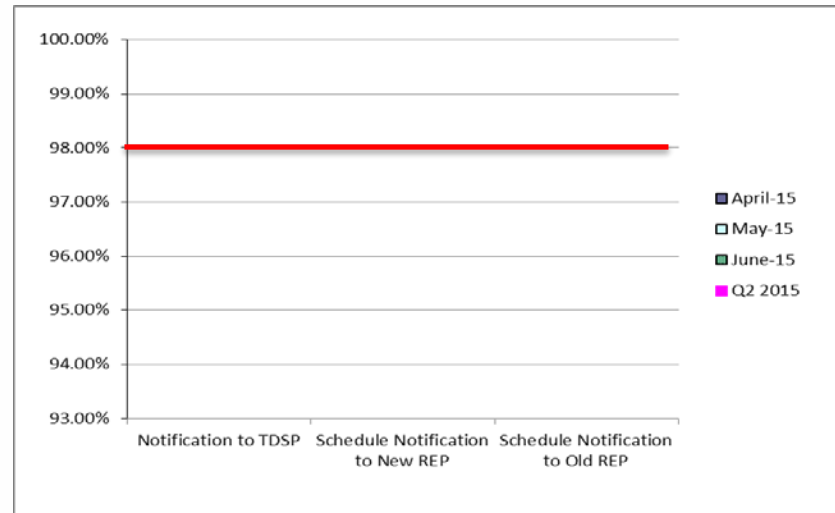


Retail Performance Measures – Switch – February 2015

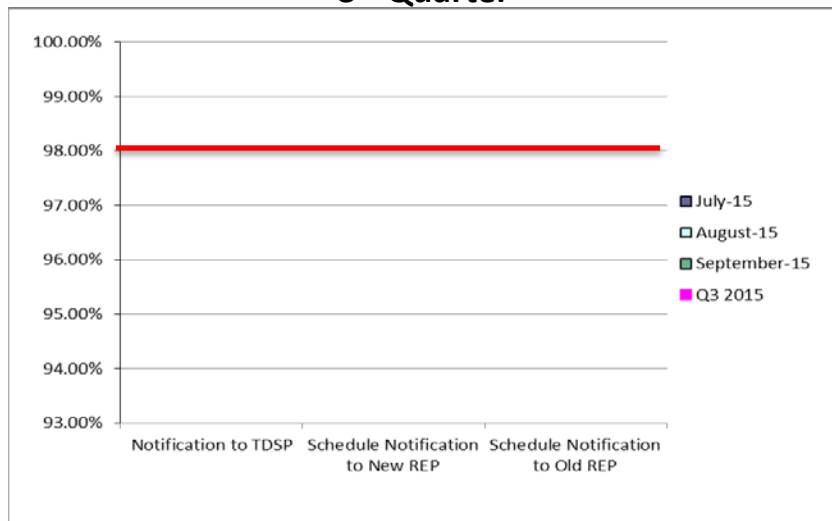
1st Quarter



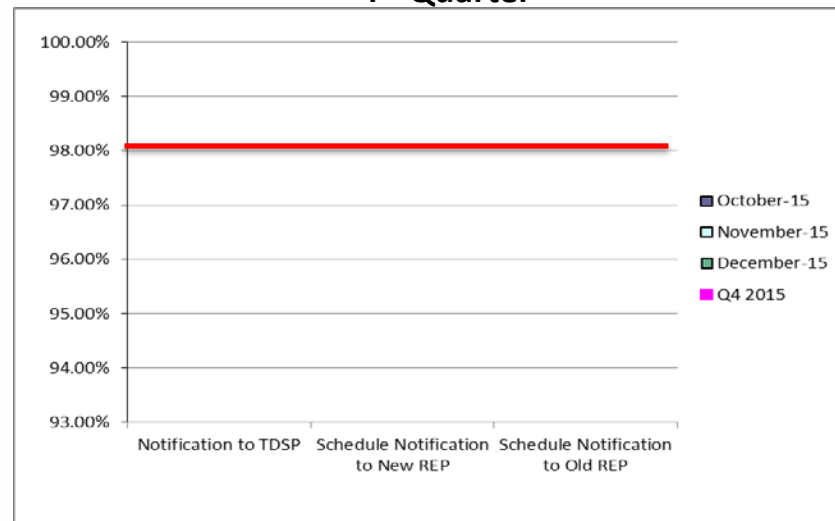
2nd Quarter



3rd Quarter

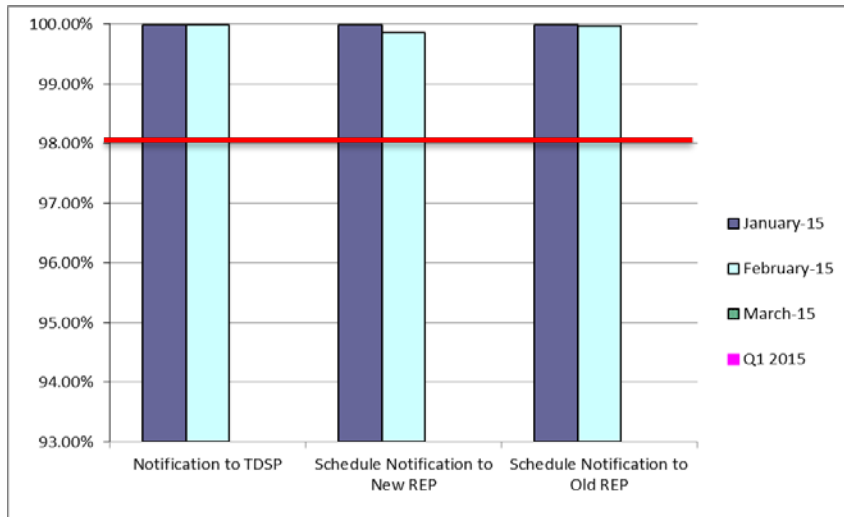


4th Quarter

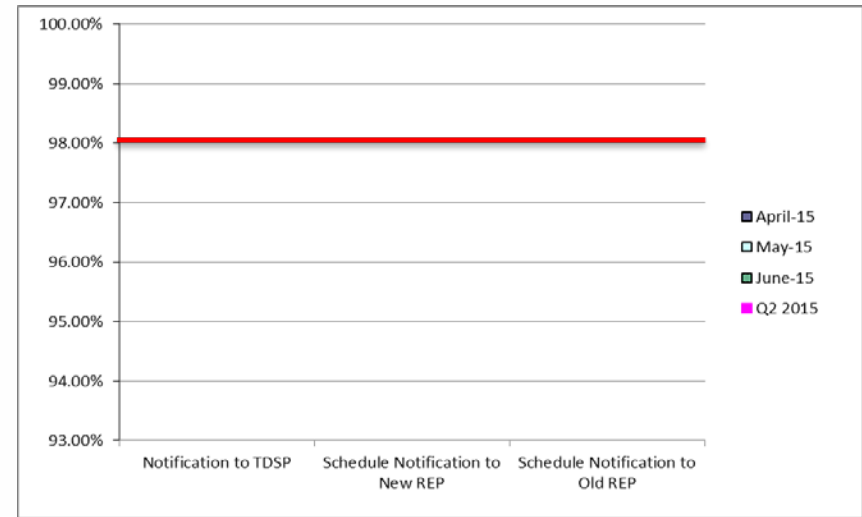


Retail Performance Measures (Same Day Move-In) – February 2015

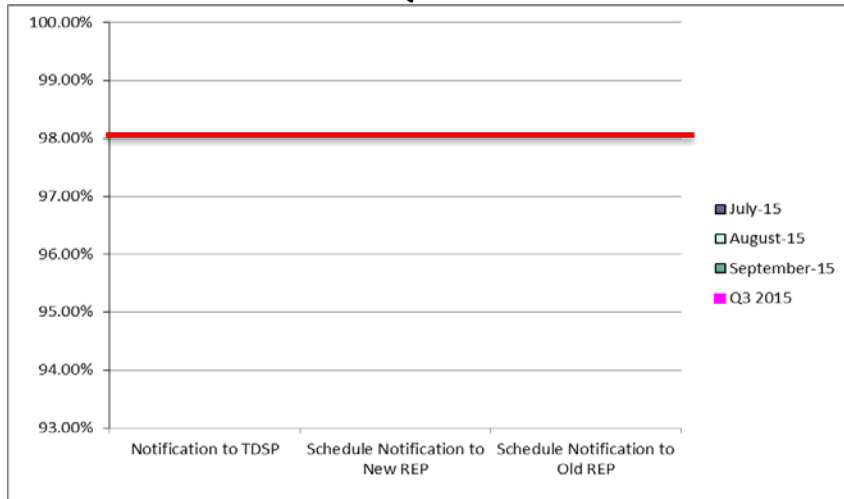
1st Quarter



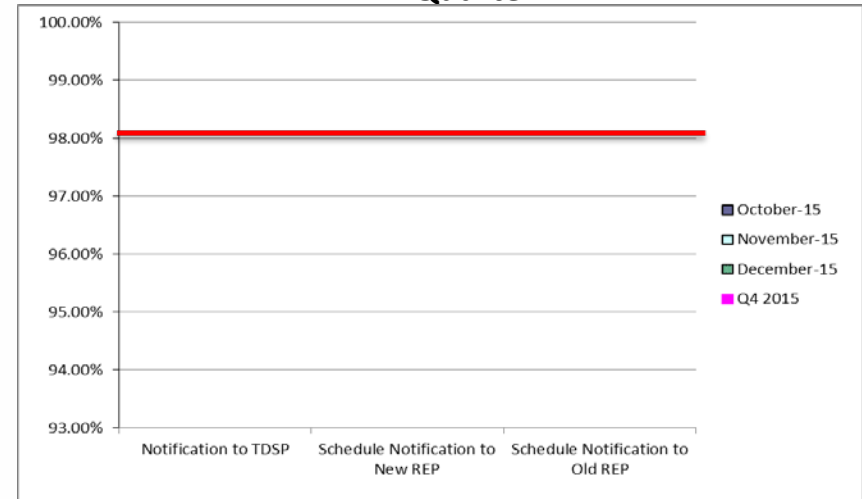
2nd Quarter



3rd Quarter

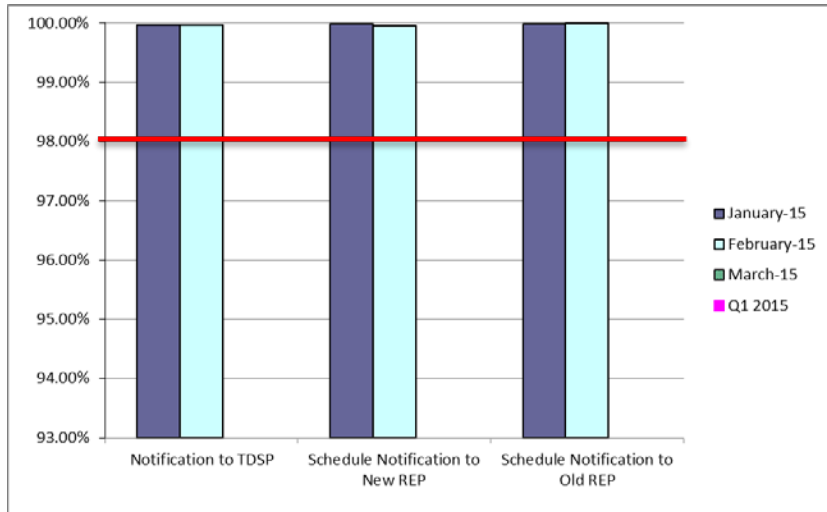


4th Quarter

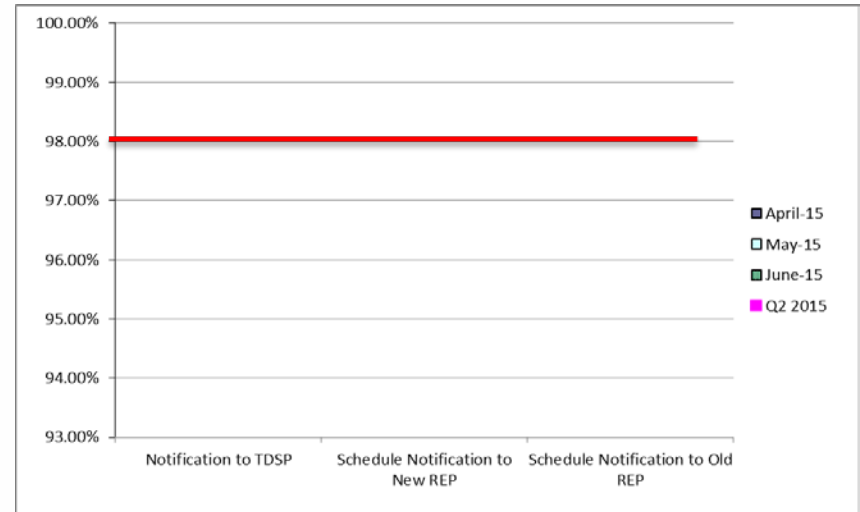


Retail Performance Measures (Standard Move-In) – February 2015

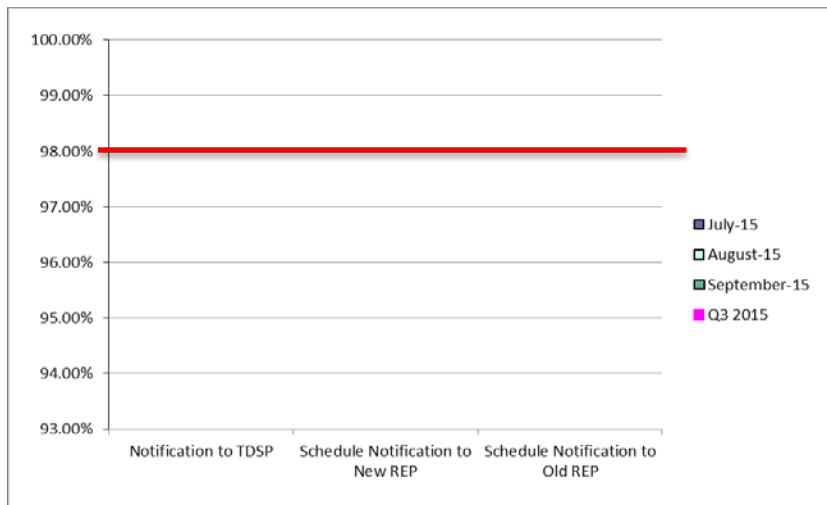
1st Quarter



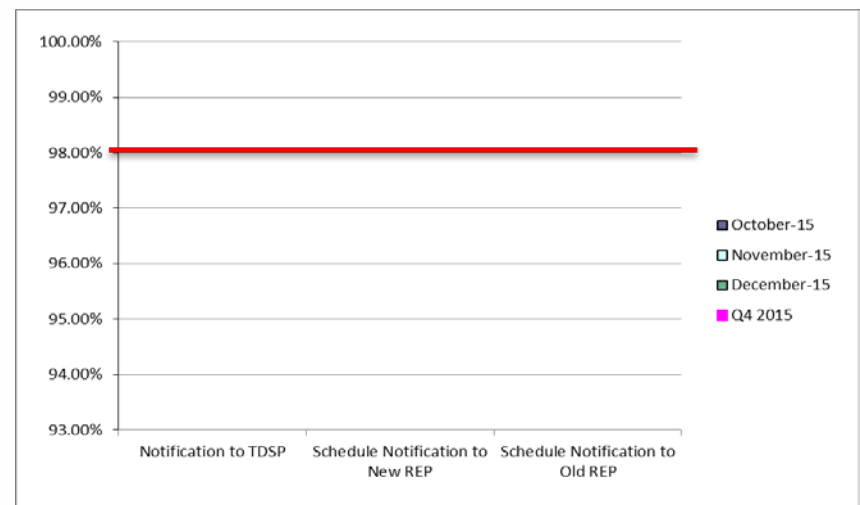
2nd Quarter



3rd Quarter



4th Quarter



Projects Report

ERCOT Portfolio Stoplight Report – February 2015

			2015 Project Funding		\$ 21,650,000				
Impact Metric Tolerances					2015 Portfolio Spending Estimate		Total Portfolio Demand		
Unfavorable variances are represented as negative numbers within the report. - Green = No more than 4.9% unfavorable variance - Yellow = Unfavorable variance between 4.9% and 9.9% - Red = Unfavorable variance more than 9.9%		Projects In Flight/On Hold (Count = 58)			\$ 23,966,135		\$ 52,271,443		
		Projects Not Yet Started (Count = 20)			\$ 1,644,557		\$ 6,794,505		
		Projects Completed (Count = 4)			\$ 19,420		\$ 1,807,746		
		Spending Reductions Required to Maintain Capital Budget			\$ (3,980,112)		N/A		
		TOTAL				\$ 21,650,000		\$ 60,873,695	
Project Number	Projects in Initiation Phase (Count = 9)								
163-01	Cyber Security Project #10								
Various	NPRRs 573 and 581								
Various	NPRRs 588 and 615								
166-01	Jboss Application Monitoring & Management (JAMM)								
TBD	Short Circuit Ratio Functionality								
NPRR573	Alignment of PRC Calculation								
NPRR588	Clarifications for PV Generation Resources								
NPRR615	PVGR Forecasting								
SCR771	ERCOT System Change Allowing Independent Master QSE to Represent Split Generation Resources								
Project Number	Projects in Planning Phase (Count = 9)	Baseline Phase Start	Baseline Phase Finish	Scheduled Go-Live Date	Scheduled Phase Finish	Schedule Impact		Budget Impact	
106-01	MP Online Data Entry - Ph 1	10/9/2013	3/5/2014	TBD	3/31/2015	4	-265%		8%
120-01	IT Production Hardening	2/12/2014	9/24/2014	TBD	3/4/2015	1	-71%	2	-26%
129-01	Access and Roles Management	7/1/2014	10/1/2014	TBD	3/20/2015	2	-184%		0%
134-01	Privileged Account Management	6/5/2014	11/19/2014	TBD	5/20/2015	1	-108%		0%
141-01	Production Virtualization	11/6/2014	3/4/2015	TBD	3/4/2015		0%		0%
158-01	Move iTron LF Application to High Availability Environment	1/14/2015	6/19/2015	TBD	6/19/2015		0%		85%
164-01	Browser Compatibility Assessment	2/25/2015	4/29/2015	TBD	4/29/2015		0%		0%
NPRR543	Message for Confirmed E-Tags	2/11/2015	3/6/2015	TBD	3/31/2015	2	-108%		0%
SCR775	Posting Results of Real-Time Data in a Display Format	2/11/2015	3/31/2015	TBD	3/31/2015		0%		0%



ERCOT Portfolio Stoplight Report – February 2015

Project Number	Projects in Execution Phase (Count = 29)	Baseline Phase Start	Baseline Go-Live Target	Scheduled Go-Live Date	Scheduled Phase Finish	Schedule Impact		Budget Impact	
052-01	EMS Upgrade	9/24/2014	5/25/2016	5/25/2016	10/31/2016		0%		-1%
065-01	NMMS Upgrade	12/17/2014	5/27/2016	6/16/2016	7/28/2016		-3%		3%
089-01	Information Technology Change Management	10/29/2014	5/1/2015	5/27/2015	6/15/2015	2	-14%	2	-8%
097-01	ABB MMS OS Technology Refresh	8/15/2014	3/26/2015	3/26/2015	5/8/2015		0%		-2%
116-01	Collage Replacement	2/6/2014	9/22/2014	4/9/2015	4/30/2015	4	-87%	2	-51%
127-01	SQL Server 2012 Upgrade / Cluster Consolidation	12/18/2014	7/17/2015	7/17/2015	9/9/2015		0%		7%
130-01	Electronic Crisis Communications Enhancements	6/19/2014	12/12/2014	2/16/2015	3/27/2015	1	-37%		3%
143-01	OSI Pi Visualization Enhancements	1/16/2015	6/19/2015	6/19/2015	7/22/2015		0%		-3%
144-01	OC-48 Replacement with DWDM	2/4/2015	8/25/2015	8/25/2015	9/29/2015		0%		12%
153-01	Infrastructure Performance Management	12/22/2014	1/22/2015	2/19/2015	3/2/2015	1	-90%		0%
155-01	Replace N2N System	2/5/2015	5/14/2015	5/27/2015	6/3/2015	2	-13%	2	-7%
156-01	Symposium Call Center Replacement	2/5/2015	5/19/2015	5/13/2015	6/30/2015		5%		5%
165-00	Capital Efficiencies and Enhancements - 2015	1/1/2015	12/31/2015	12/31/2015	12/31/2015		0%		0%
Various	Market System Enhancements 2015	1/15/2015	6/28/2015	6/28/2015	8/11/2015		0%		1%
Various	2014 CMM NPRRs and SCRs	1/29/2015	6/13/2015	6/13/2015	7/15/2015		0%		0%
NPRR500	Posting of Generation that is Off but Available	1/7/2015	2/6/2015	2/6/2015	3/27/2015		0%		33%
NPRR559	Revisions to MCE Calculation	1/29/2015	6/13/2015	6/13/2015	7/15/2015		0%	NA	See #154-01
NPRR568	Real-Time Reserve Price Adder Based on Operating Reserve Demand Curve - Phase 2	1/15/2015	6/28/2015	6/28/2015	8/11/2015		0%	NA	See #149-01
NPRR597	Utilize Initial Estimated Liability (IEL) Only During Initial Market Activity	1/29/2015	6/13/2015	6/13/2015	7/15/2015		0%	NA	See #154-01
NPRR598	Clarify Inputs to PRC and ORDC	1/15/2015	6/28/2015	6/28/2015	8/11/2015		0%	NA	See #149-01
NPRR601	Inclusion of Incremental Exposure in Mass Transitions to Counter-Parties that are Registered as QSEs and LSEs and Provide POLR Service	1/29/2015	6/13/2015	6/13/2015	7/15/2015		0%	NA	See #154-01
NPRR626	Reliability Deployment Price Adder	1/15/2015	6/28/2015	6/28/2015	8/11/2015		0%	NA	See #149-01
NPRR639	Correction to Minimum Current Exposure	1/29/2015	6/13/2015	6/13/2015	7/15/2015		0%	NA	See #154-01
NPRR644	Operating Reserve Demand Curve Phase 2 Revisions	1/15/2015	6/28/2015	6/28/2015	8/11/2015		0%	NA	See #149-01
NPRR645	Real-Time On-Line Capacity Revisions	1/15/2015	6/28/2015	6/28/2015	8/11/2015		0%	NA	See #149-01
NPRR665	As-Built Clarification of Reliability Deployment Price Adder	1/15/2015	6/28/2015	6/28/2015	8/11/2015		0%	NA	See #149-01
OBD	Setting the Shadow Price Caps and Power Balance Penalties in Security-Constrained Economic Dispatch	1/15/2015	6/28/2015	6/28/2015	8/11/2015		0%	NA	See #149-01
SCR778	Credit Exposure Calculations for NOIE Options Linked to RTM PTP Obligations	1/29/2015	3/28/2015	3/28/2015	7/15/2015		0%	NA	See #154-01
SCR779	Increase to the CRR Auction Transaction Limit	9/29/2014	3/27/2015	3/26/2015	4/23/2015		0%		5%



ERCOT Portfolio Stoplight Report – February 2015

Project Number	Projects in Stabilization (Count = 9)	Baseline Execution Phase Start	Baseline Go-Live Target	Actual Go-Live Date	Scheduled Execution Phase Finish	Schedule Impact		Budget Impact	
NPRR467	Balancing Account Resettlement Due to DAM Resettlement	7/1/2014	12/6/2014	12/6/2014	4/7/2015		0%	NA	See #10052
NPRR580	Establishment of a Rolling CRR Balancing Account Fund	7/1/2014	12/6/2014	12/6/2014	4/7/2015		0%	NA	See #10052
10052_01	Settlement System Upgrade	1/25/2012	12/23/2014	12/6/2014	4/7/2015		1%		0%
115-01	Cyber Security Project #14	6/30/2014	1/15/2015	1/15/2015	3/6/2015		0%		11%
122-01	Infoblox DNS/DHCP	5/21/2014	11/5/2014	11/20/2014	3/11/2015	1	-8%		9%
137-01	EIS Reporting and Control Systems Upgrade	8/13/2014	1/15/2015	1/13/2015	2/25/2015		1%		2%
142-01	Implementation of NERC BAL-TRE-001 Regional Standard	1/14/2015	2/16/2015	2/6/2015	3/6/2015		30%		27%
150-01	Backup Resiliency	12/17/2014	2/6/2015	2/6/2015	3/2/2015		0%		-2%
SCR772	New Extract for Five Minute Interval Settlement Data	11/5/2014	2/13/2015	2/12/2015	3/30/2015		1%		4%
Project Number	Projects On Hold (Count = 2)	Forecast Start Date	Baseline Phase Finish	Scheduled Go-Live Date	Scheduled Phase Finish	Schedule Impact		Budget Impact	
SCR777	Bilateral CRR Interface Enhancement	8/20/2014	11/28/2014	TBD	TBD	3		3	
NPRR327	State Estimator Data Redaction Methodology	12/5/2012	2/12/2013	TBD	TBD	3		3	
Project Number	Projects Completed (Count =4)	Baseline Execution Phase Start	Baseline Go-Live Target	Actual Go-Live Date	Actual Execution Phase Finish	Schedule Status		Total Variance	
NPRR586	Align Credit Lock for CRR Auctions with Transaction Submission Deadline	7/2/2014	9/26/2014	9/22/2014	10/28/2014		4%	2	-17%
057-01	EPS Metering DB Redesign	4/17/2013	9/6/2013	12/11/2014	1/14/2015	2	-324%	2	-216%
083-01	Centralized Application Log Management	8/28/2013	5/7/2014	3/27/2014	2/4/2015		16%		8%
104-01	Disaster Recovery: S&B, RTL, MDT	10/9/2014	1/18/2015	1/18/2015	1/28/2015		0%		2%
			Footnotes						
			1 - One or more phases took longer than expected, resulting in additional funding and/or time required						
			2 - One or more phases required more labor than expected, resulting in additional funding and/or time required						
			3 - Project placed on hold						
			4 - Resource constraints resulted in delay to one or more phases						
			5 - Project was on an urgent timeline to meet a pre-defined target implementation date. Compressed project planning required budget estimation before full requirements were known. Additional effort needed, resulting in additional funding.						
			NA - Metric not calculated because: - it is reported at the parent project level, or - it is an administrative project						



ERCOT Portfolio Stoplight Report – February 2015

Project Number	2015 Projects Not Yet Started (Count = 20)	Forecast Start Date
NPRR256	Sync with PRR787, Add Non-Compliance Language to QSE Performance Standards	Mar-2015
NPRR589	Ancillary Service Offers in the Supplemental Ancillary Services Market	Mar-2015
TBD	Retail Market Testing Website	Mar-2015
NPRR484	Revisions to Congestion Revenue Rights Credit Calculations and Payments - Phase 1b / 2	Apr-2015
NPRR553	Monthly BLT Payment and Charge for Presidio Exception	May-2015
NOGRR084	Daily Grid Operations Summary Report	Jul-2015
NPRR210	Wind Forecasting Change to P50, Sync with PRR841	Jul-2015
NPRR219	Resolution of Alignment Items A33, A92, A106, and A150 - TSPs Must Submit Outages for Resource Owned Equipment and Clarification of Changes in Status of Transmission Element Postings	Jul-2015
NPRR419	Revise Real Time Energy Imbalance and RMR Adjustment Charge	Jul-2015
NPRR495	Changes to Ancillary Services Capacity Monitor	Jul-2015
NPRR556	Resource Adequacy During Transmission Equipment Outage	Jul-2015
RRGRR003	Modifications to Improve Wind Forecasting	Jul-2015
SCR783	Outage Scheduler Enhancements – Group 2, Usability and Filtering Enhancements	Jul-2015
TBD	AV Upgrades to TCC1 Conference Rooms	Jul-2015
TBD	Physical Security Project #2	Jul-2015
NPRR515	Day-Ahead Market Self-Commitment of Generation Resources	Aug-2015
NPRR617	Energy Offer Flexibility	Aug-2015
TBD	CRR UI Framework Upgrade	Aug-2015
TBD	CREZ Voltage Control and Coordination - Phase 2	Oct-2015
NPRR620	Collateral Requirements for Counter-Parties with No Load or Generation	Nov-2015