

# **Item 11: IMM Report**

**Beth Garza**

**Director, ERCOT IMM**

[bgarza@potomaceconomics.com](mailto:bgarza@potomaceconomics.com)

512-225-7077

**Board of Directors Meeting**

**February 9-10, 2015**

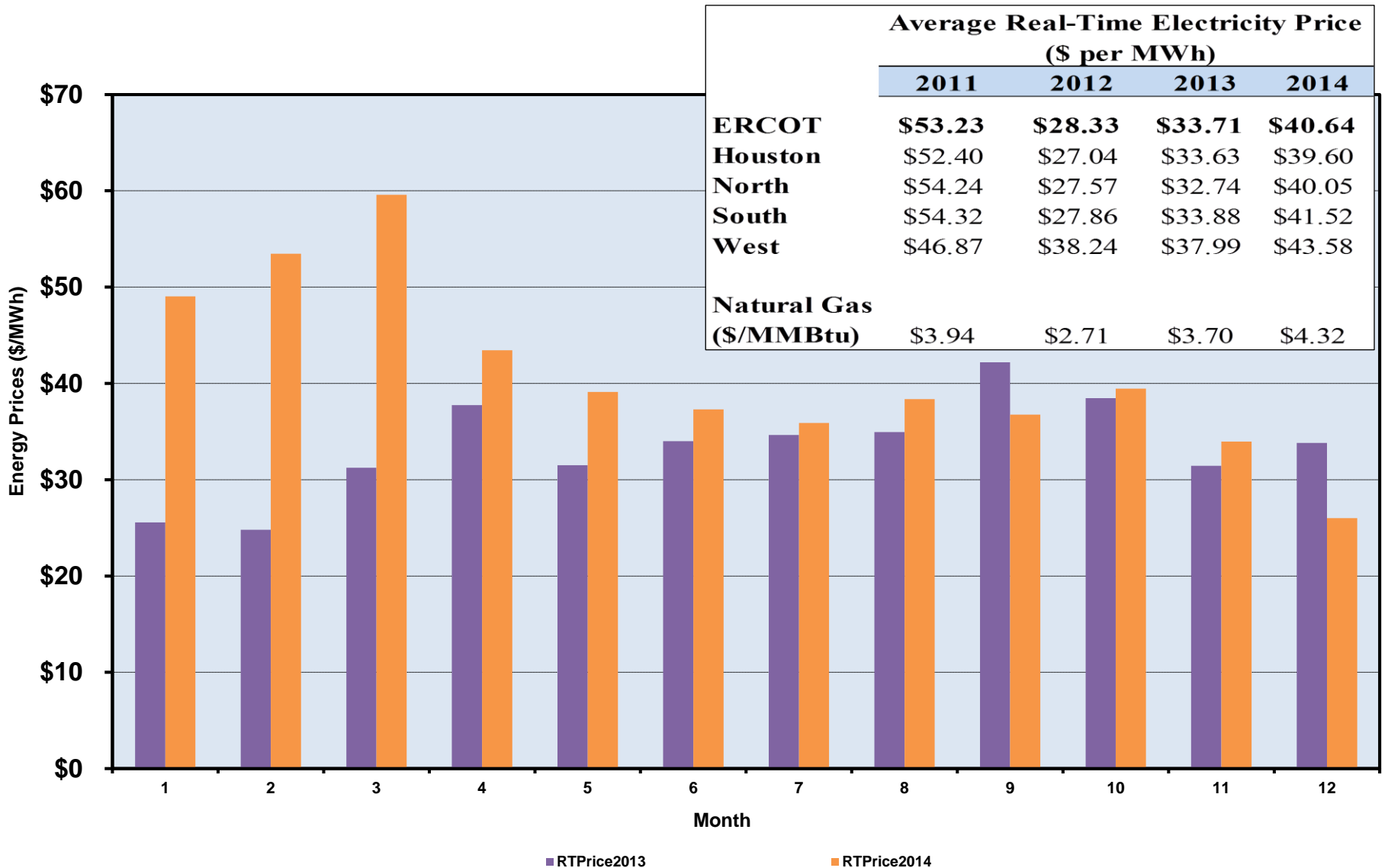
**ERCOT Public**

# Topics for Today

---

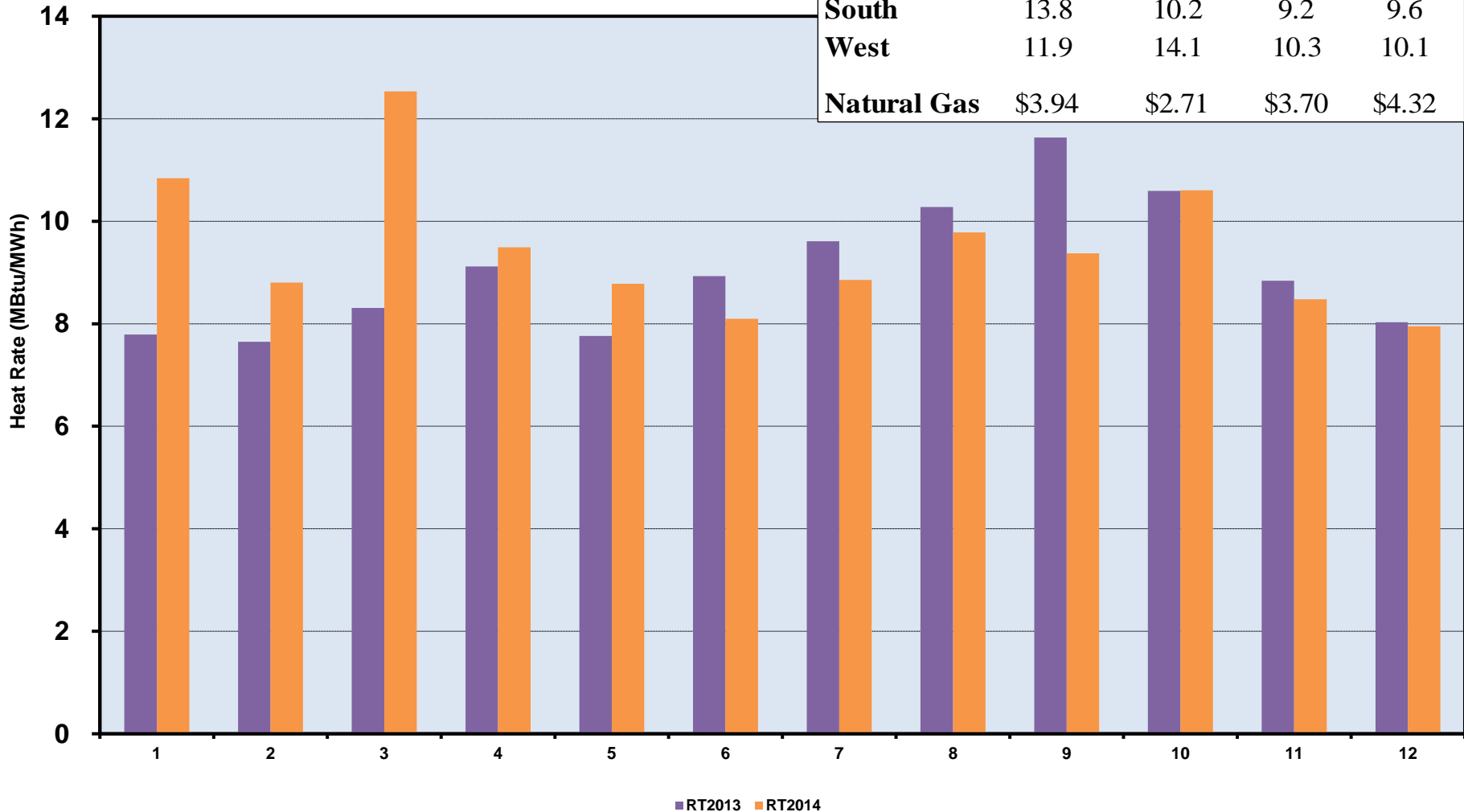
- **Quick look at 2014**
- **Jan. 8, 2015 vs Jan. 6, 2014**
- **Introduce Steve**

# ERCOT-Wide Average Real - Time Energy Prices

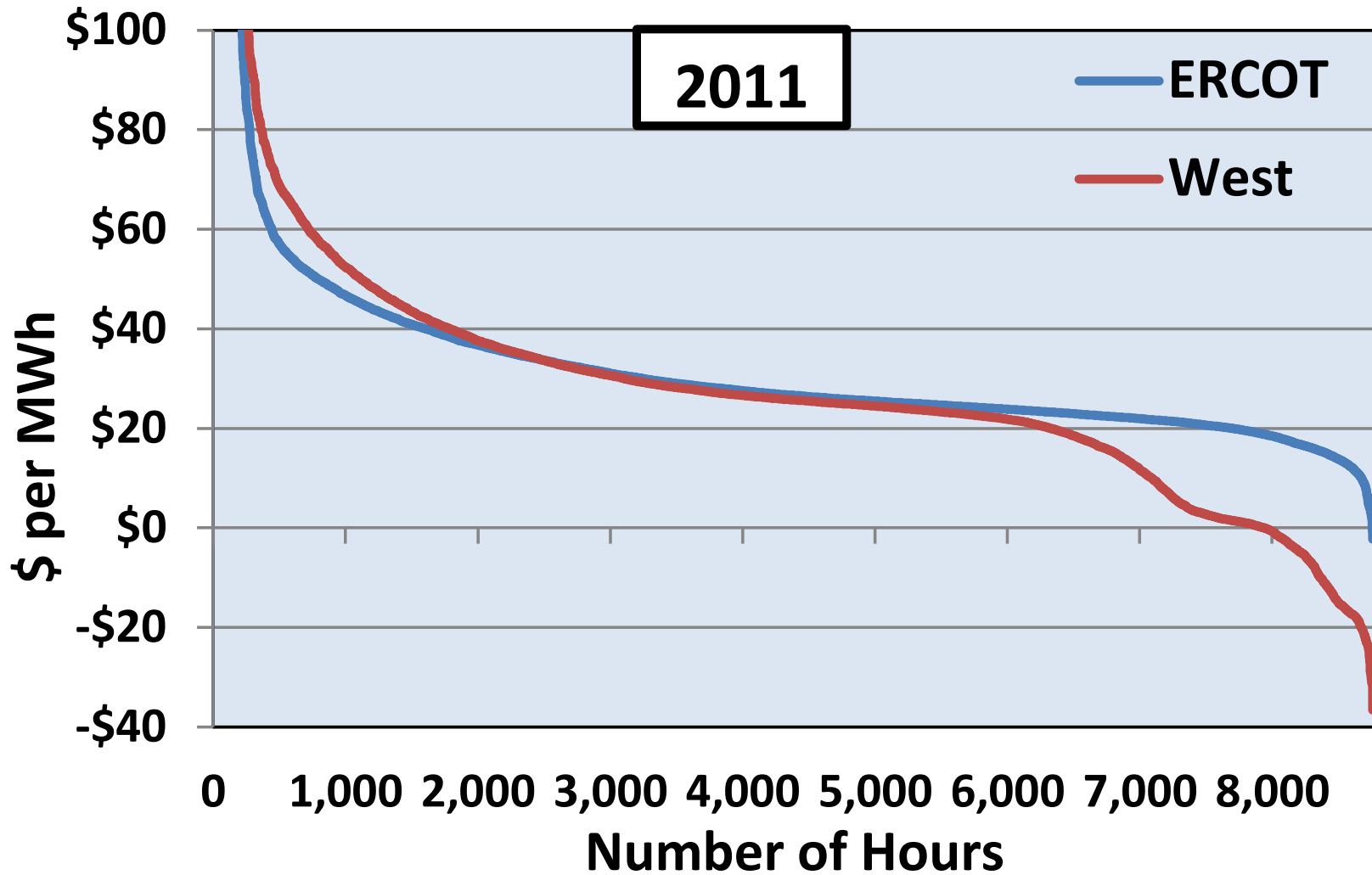


# Real - Time Implied Heat Rate

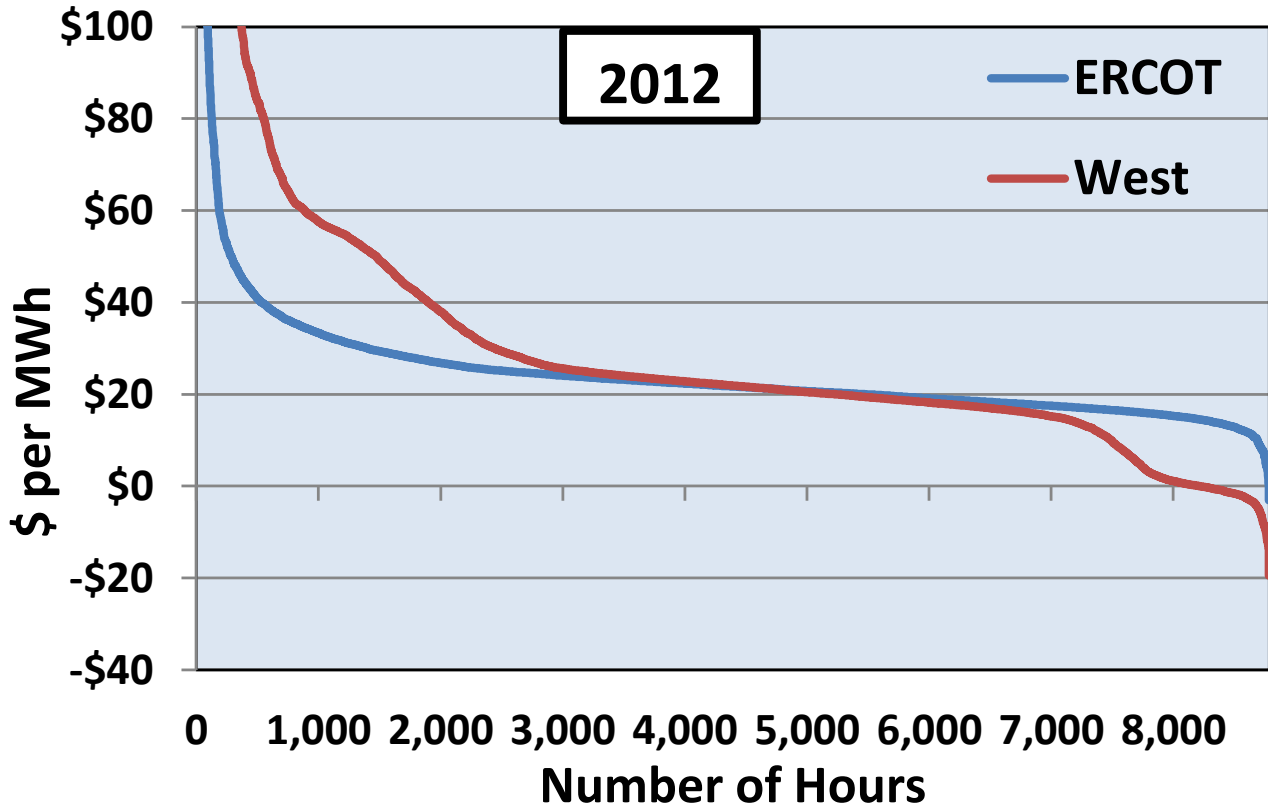
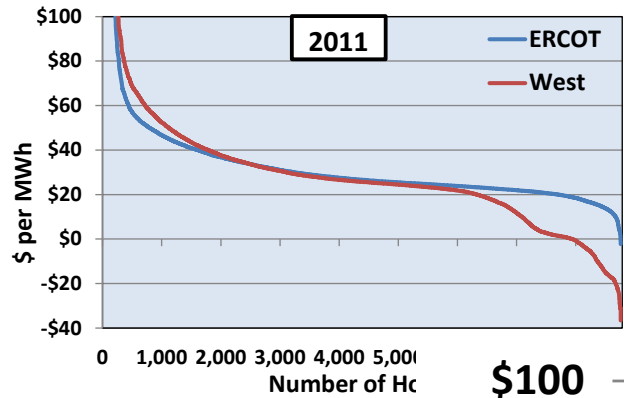
	Average Heat Rates			
	2011	2012	2013	2014
<b>ERCOT</b>	13.5	10.5	9.1	9.4
<b>Houston</b>	13.3	10.0	9.1	9.2
<b>North</b>	13.7	10.2	8.9	9.3
<b>South</b>	13.8	10.2	9.2	9.6
<b>West</b>	11.9	14.1	10.3	10.1
<b>Natural Gas</b>	\$3.94	\$2.71	\$3.70	\$4.32



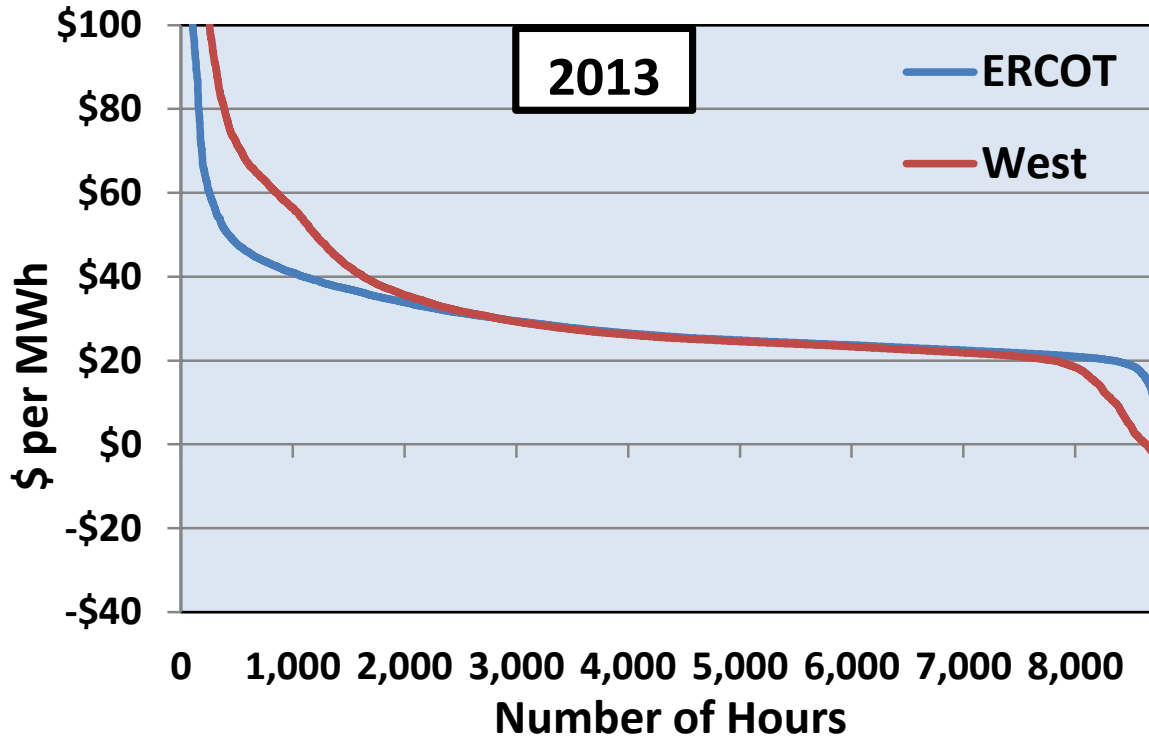
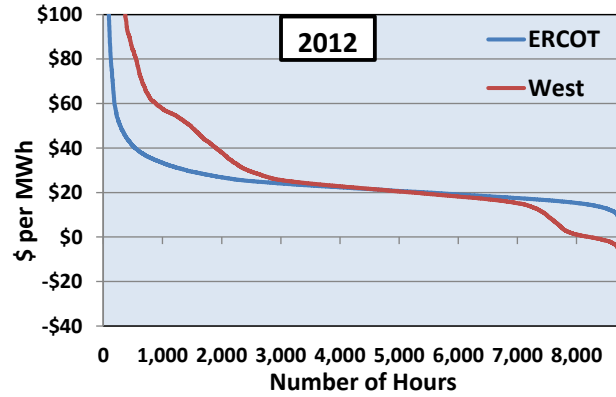
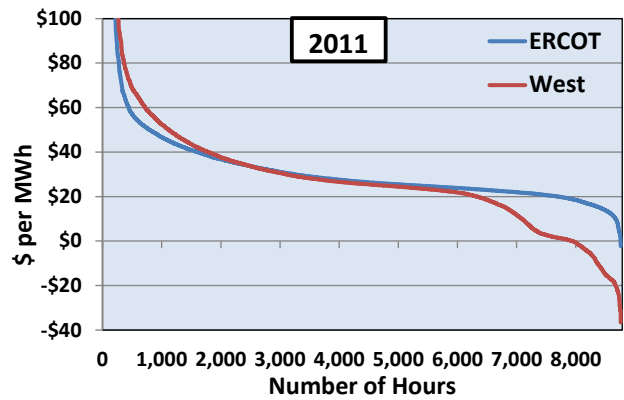
# ERCOT and West Load zone prices



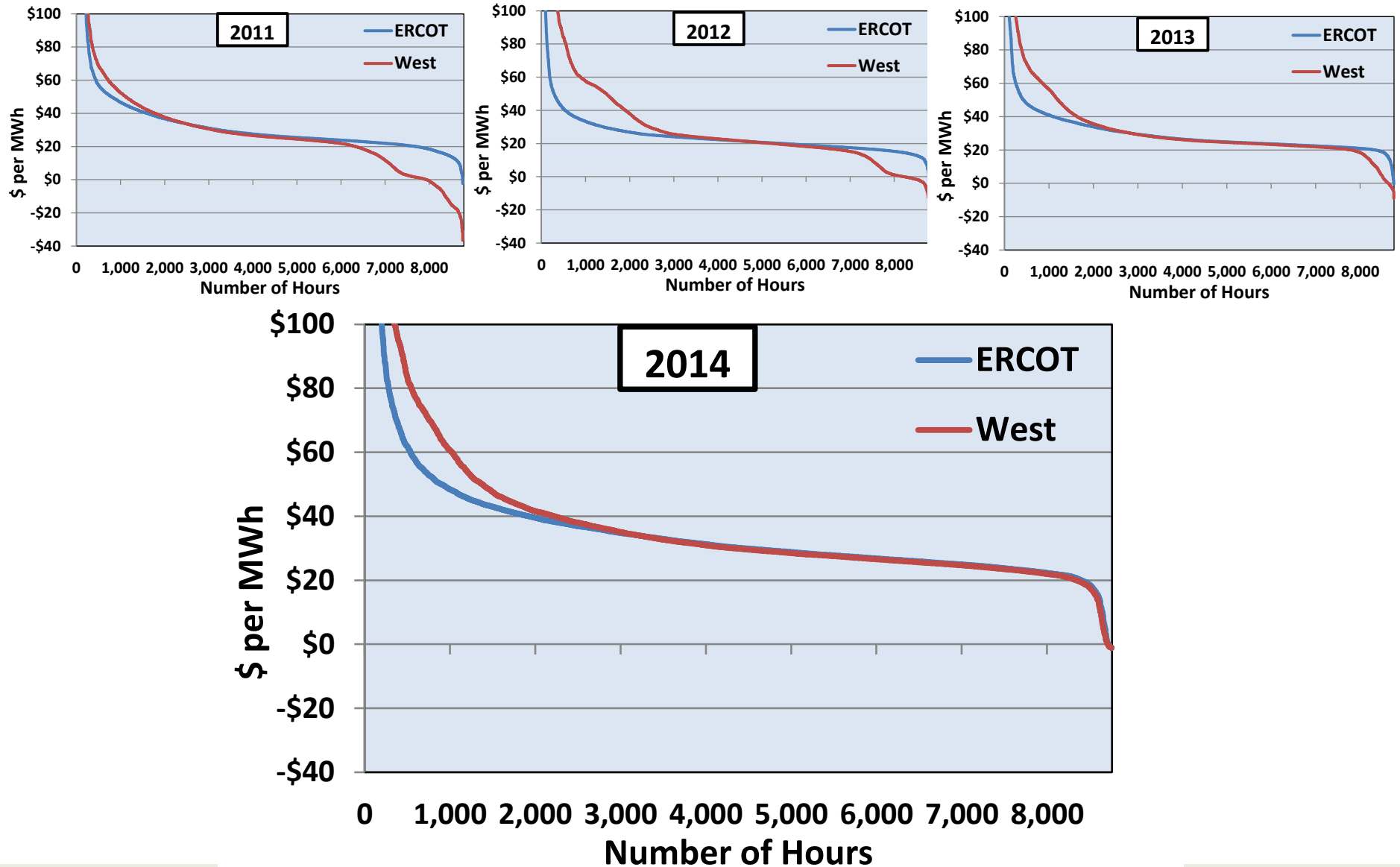
# ERCOT and West Load zone prices



# ERCOT and West Load zone prices



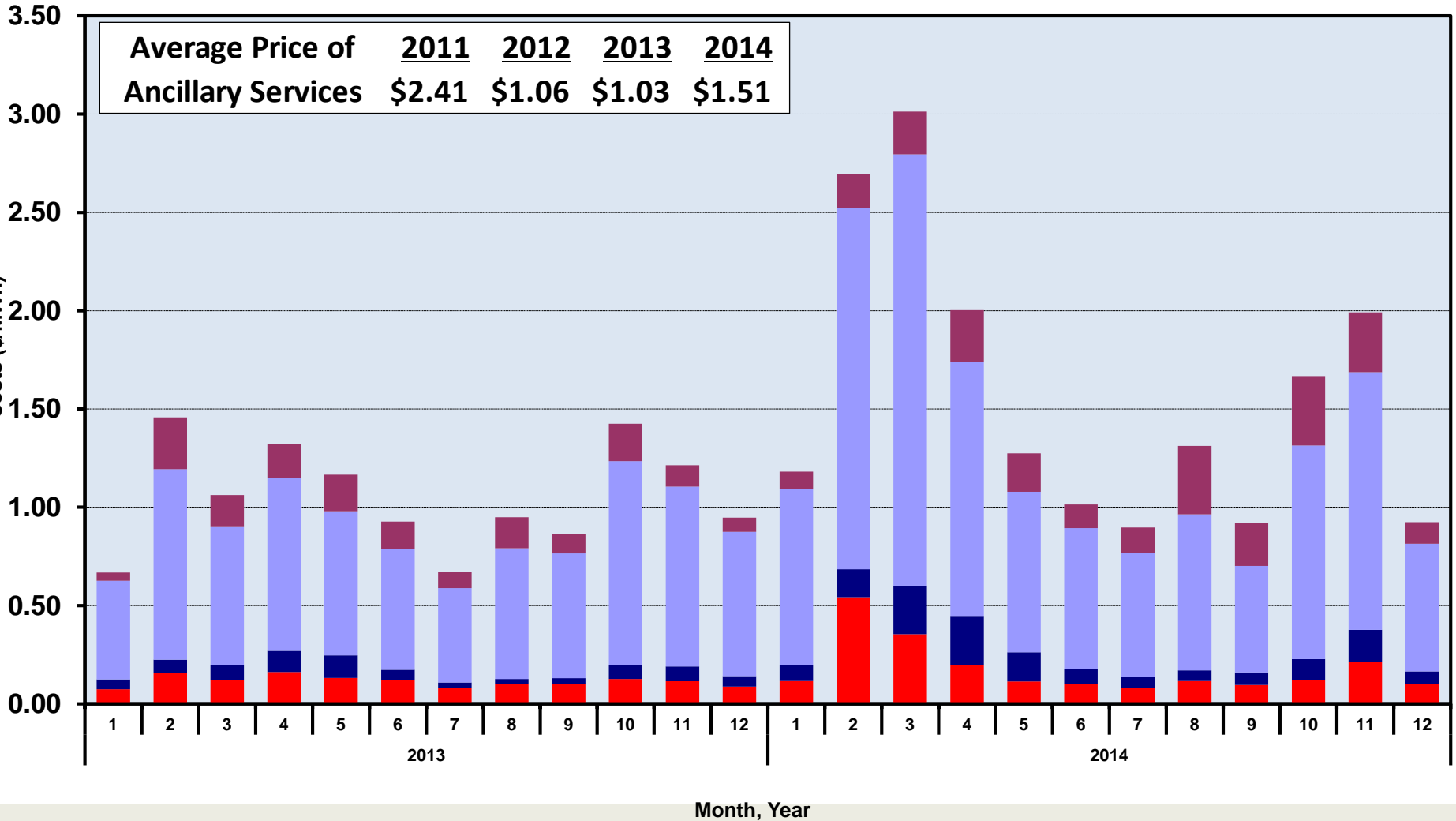
# ERCOT and West Load zone prices



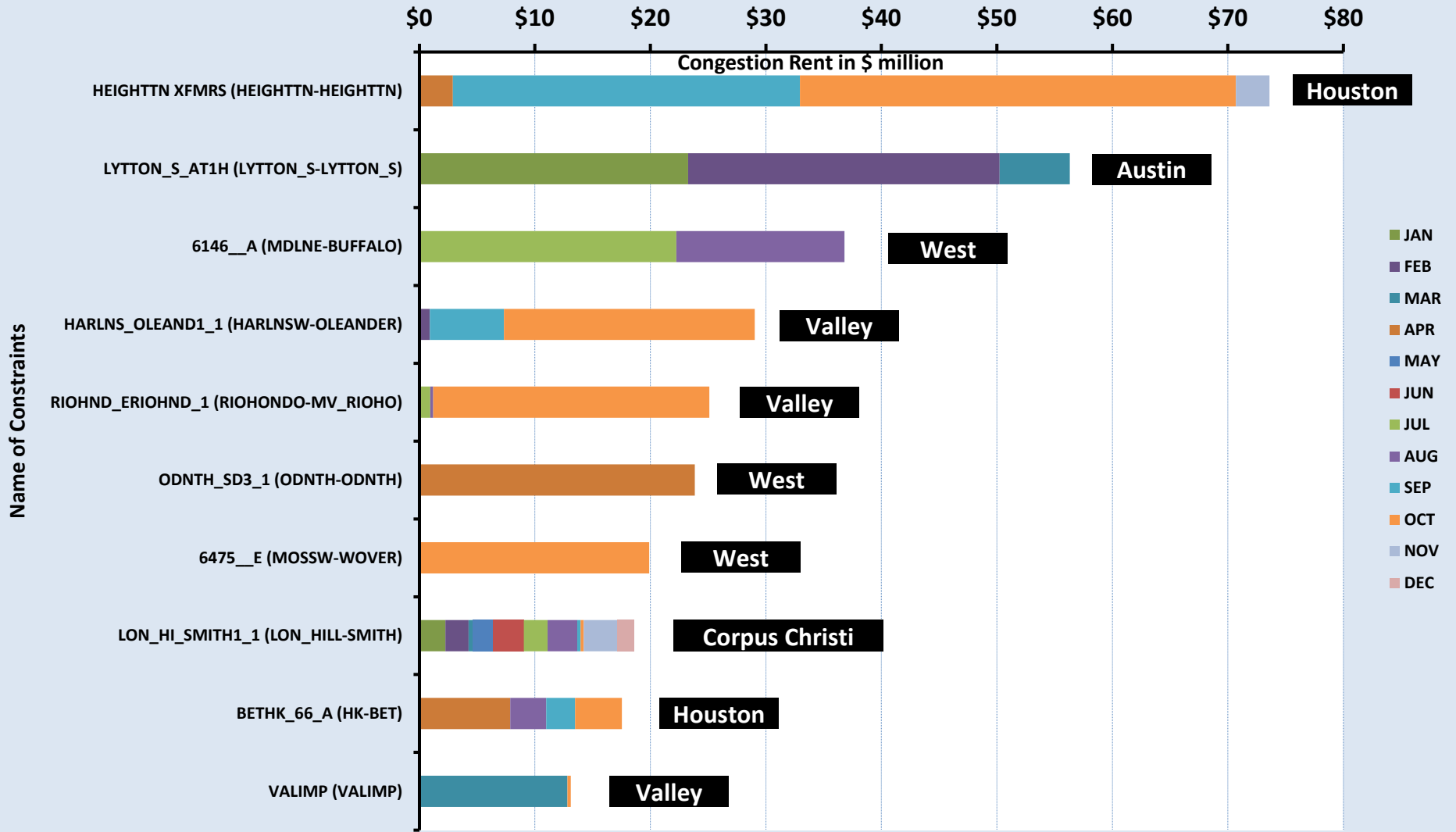


# Ancillary Service costs per MWh of load

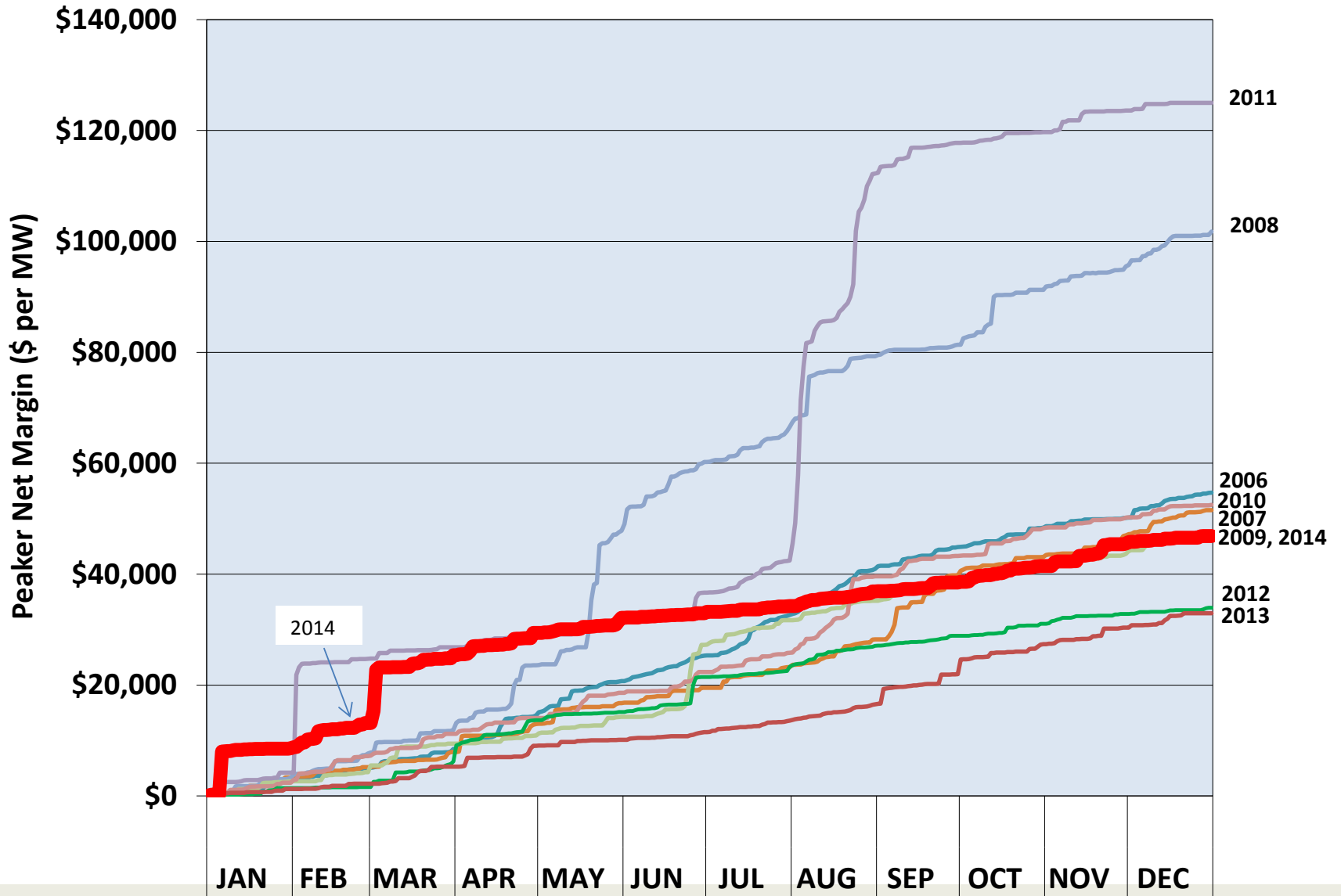
RegUp RegDn RRS NonSpin



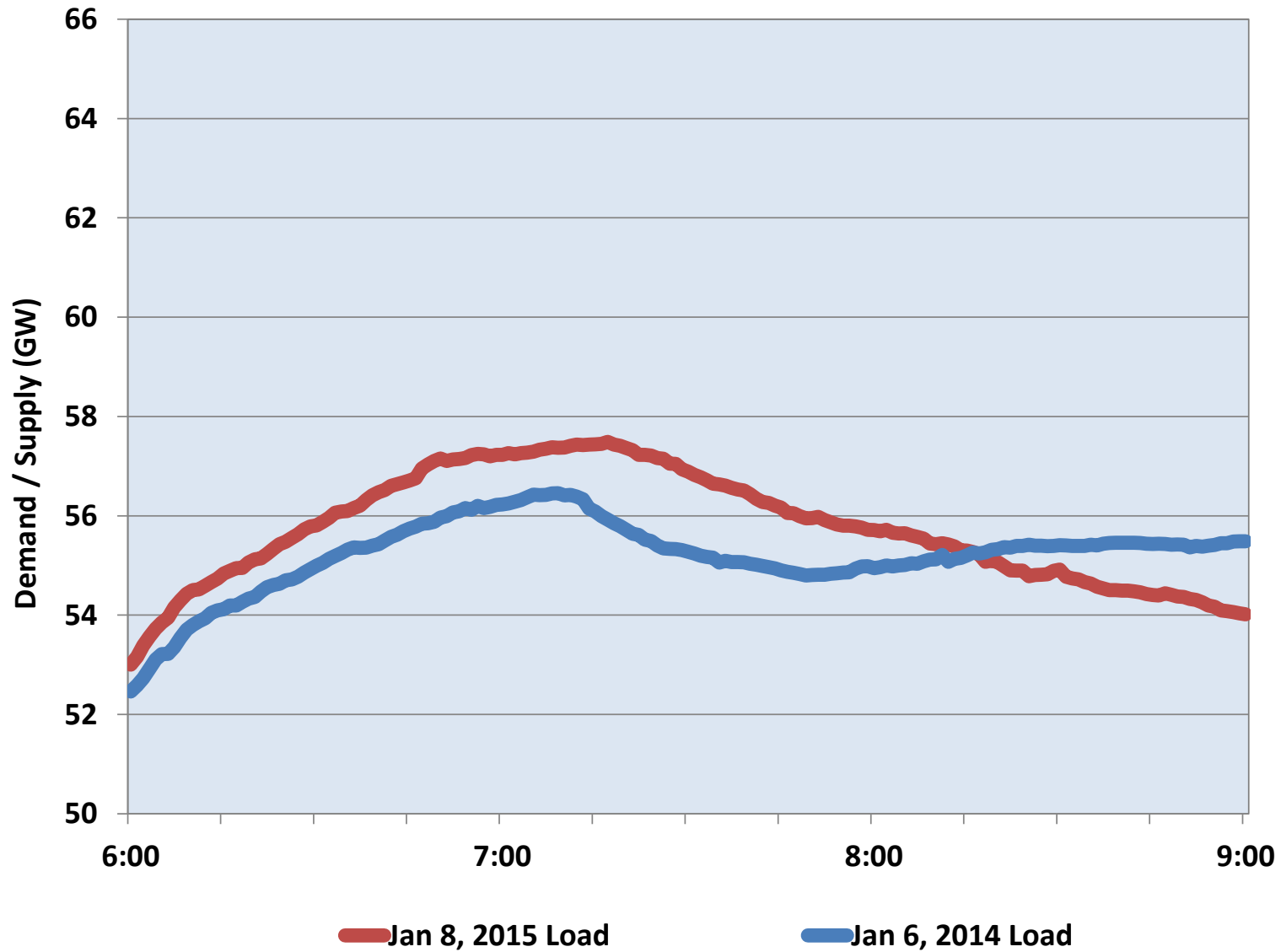
# Top Real - Time Constraints



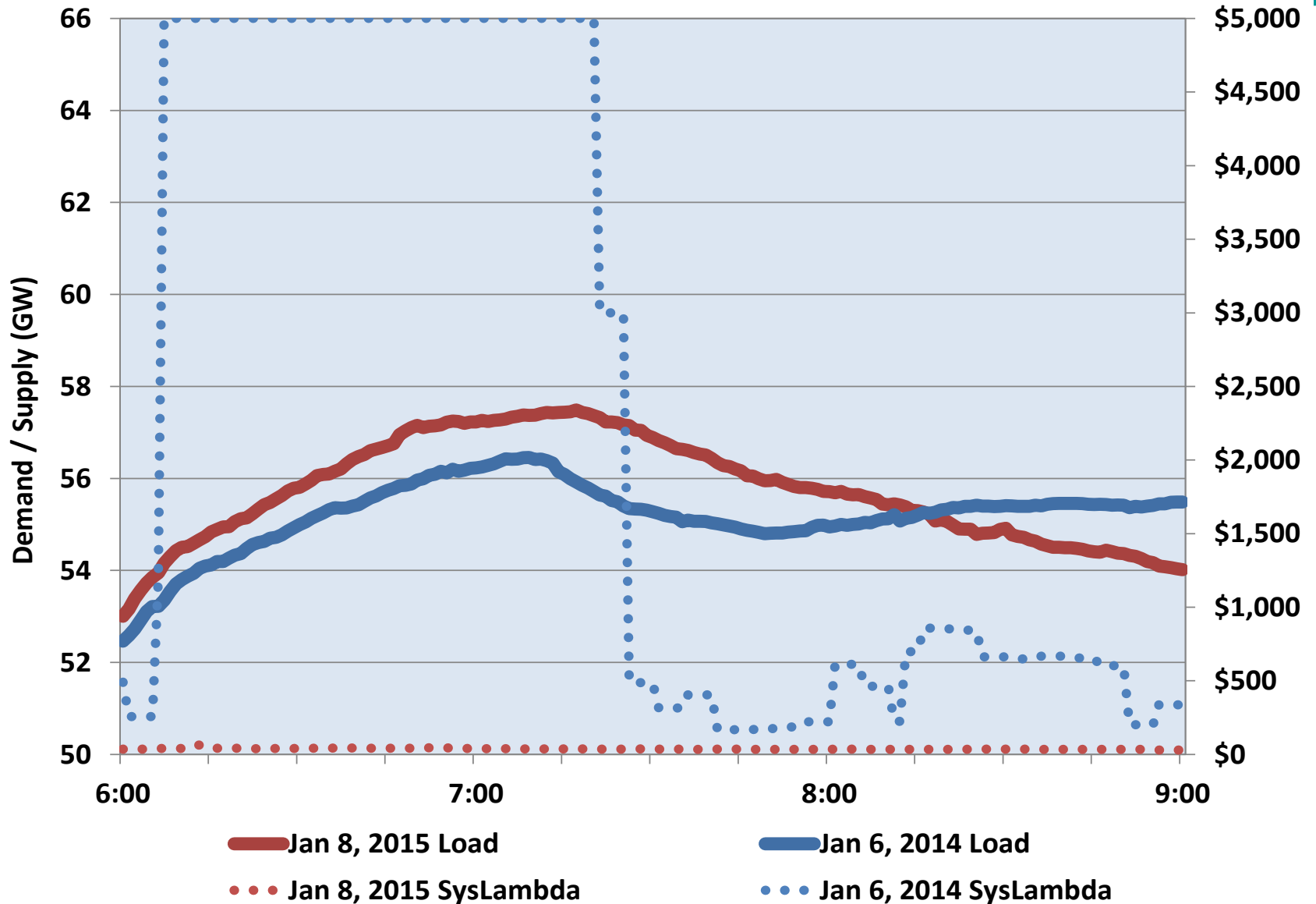
# Peaker Net Margin



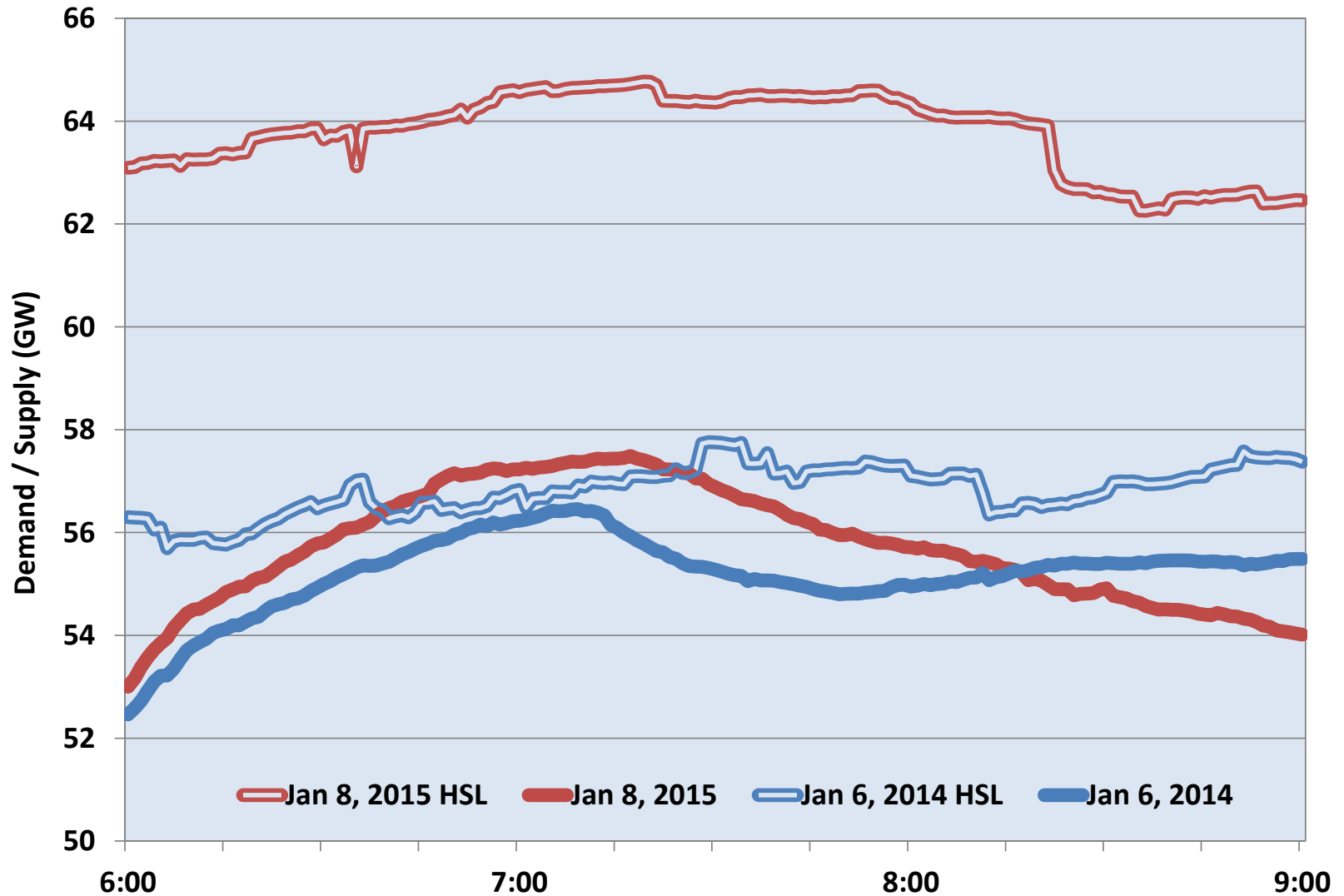
# A tale of two mornings



# Similar load levels, Very different prices



# 8 GW of additional capacity in 2015



# New Member of the ERCOT IMM staff



- **Steve Reedy, Deputy Director**
- **sreedy@potomaceconomics.com**
- **512-225-7139**

To the Public Utility Commission of Texas

# ERCOT Wholesale Electricity Market Monthly Report

Wednesday, January 14, 2015

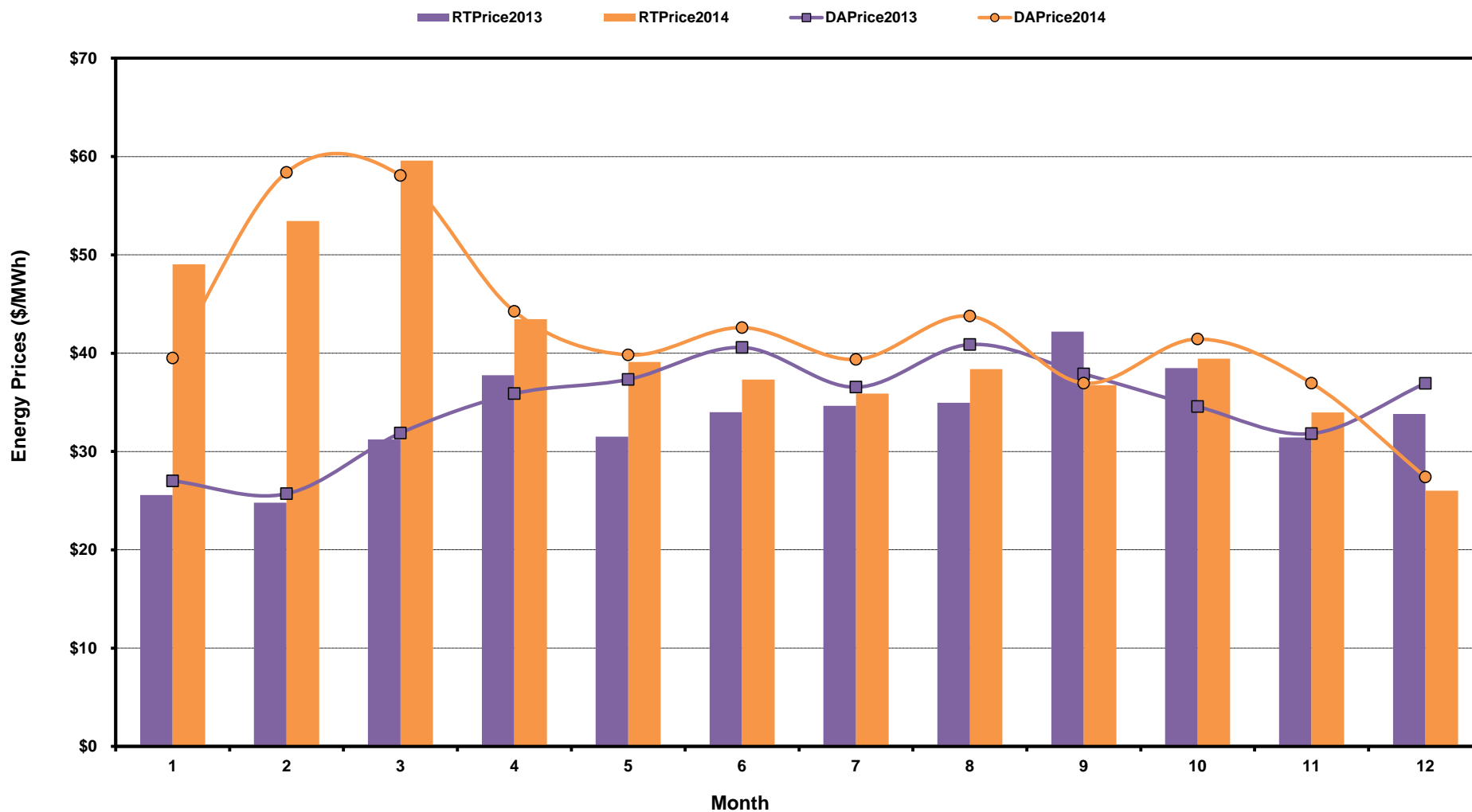
Potomac Economics, Ltd.  
Independent Market Monitor

<b>1</b>	<b>ERCOT-wide AVG Energy Prices DA vs. RT</b>	<a href="#">chart</a>	<a href="#">table</a>
<b>2</b>	<b>Load Zone Load Statistics</b>	<a href="#">chart</a>	<a href="#">table</a>
<b>3</b>	<b>Load Zone Energy Prices DA vs RT</b>	<a href="#">chart</a>	<a href="#">table</a>
<b>4</b>	<b>ERCOT-wide Implied Heat Rates DA vs RT</b>	<a href="#">chart</a>	<a href="#">table</a>
<b>5</b>	<b>Load Zone Implied Heat Rates DA vs RT</b>	<a href="#">chart</a>	<a href="#">table</a>
<b>6</b>	<b>Daily Average Reserve Adder Value and Duration</b>	<a href="#">chart</a>	<a href="#">table</a>
<b>7</b>	<b>Ancillary Services Required MW by Month</b>	<a href="#">chart</a>	<a href="#">table</a>
<b>8</b>	<b>Ancillary Services Required MW by Hour Ending</b>	<a href="#">chart</a>	<a href="#">table</a>
<b>9</b>	<b>Ancillary Services Prices by Month</b>	<a href="#">chart</a>	<a href="#">table</a>
<b>10</b>	<b>A/S Costs per MWh of Load by Month</b>	<a href="#">chart</a>	<a href="#">table</a>
<b>11</b>	<b>Ercot-wide Peaker Net Margin</b>	<a href="#">chart</a>	<a href="#">table</a>
<b>12</b>	<b>DA Load Forecast Errors by Hour Ending</b>	<a href="#">chart</a>	<a href="#">table</a>
<b>13</b>	<b>Average Wind Production by Hour Ending</b>	<a href="#">chart</a>	<a href="#">table</a>
<b>14</b>	<b>RT Constraint Rankings</b>		<a href="#">table</a>
	<b>- Top 10 Constraints by Congestion Rent</b>	<a href="#">chart</a>	
	<b>- Top 10 Constraints by Binding Frequency</b>	<a href="#">chart</a>	
<b>15</b>	<b>DA Constraint Rankings</b>		<a href="#">table</a>
	<b>- Top 10 Constraints by Congestion Rent</b>	<a href="#">chart</a>	
	<b>- Top 10 Constraints by Binding Frequency</b>	<a href="#">chart</a>	
<b>16</b>	<b>CRR Auction Prices Rankings</b>		<a href="#">table</a>
	<b>- Top 10 PTP Obligations</b>	<a href="#">chart</a>	
	<b>- Top 10 PTP Options</b>	<a href="#">chart</a>	



# ERCOT-Wide Average Energy Prices DA vs RT

(avg. DA & RT SPPs weighted by Real Time Settlement Loads)



[Home <<](#)

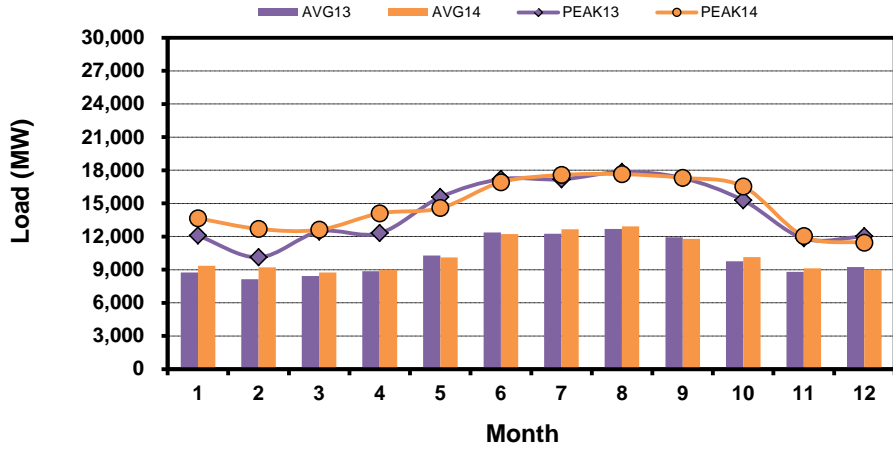
[previous <<](#)

[next >>](#)

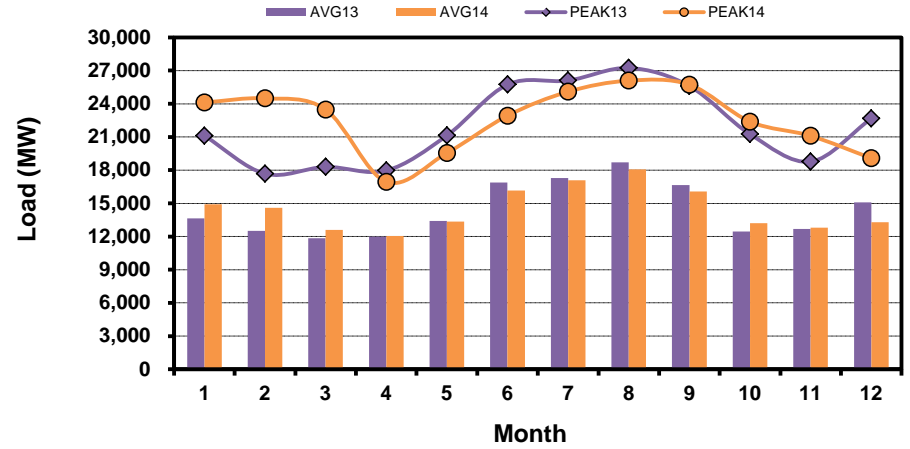
# Load Zone Load Statistics

(Nodal load zone made comparable to zonal system Load Zone definitions\*)

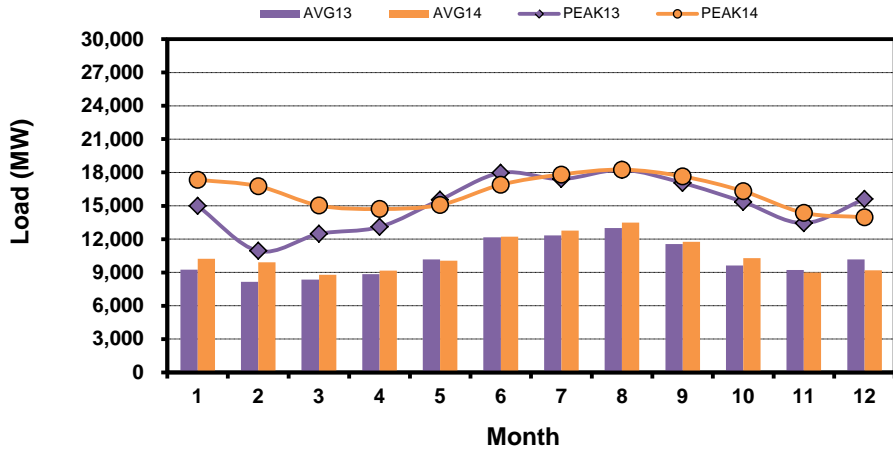
### Houston Zone



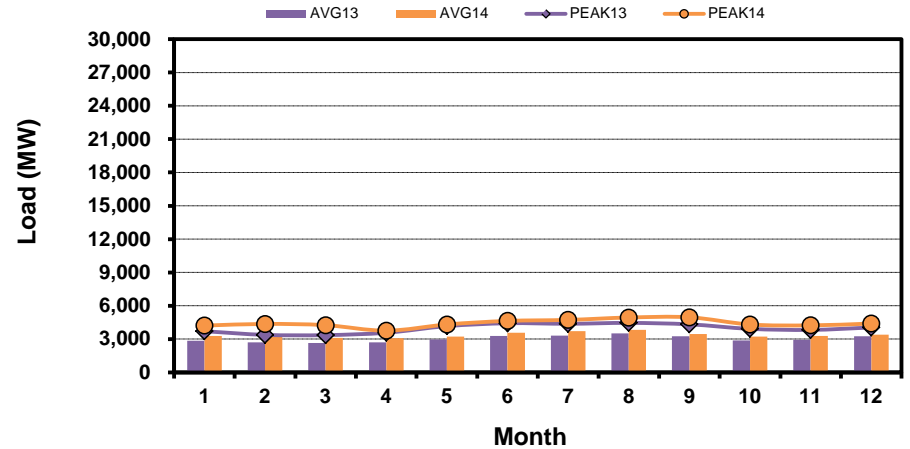
### North Zone



### South Zone



### West Zone



[Home <<](#)

[previous <<](#)

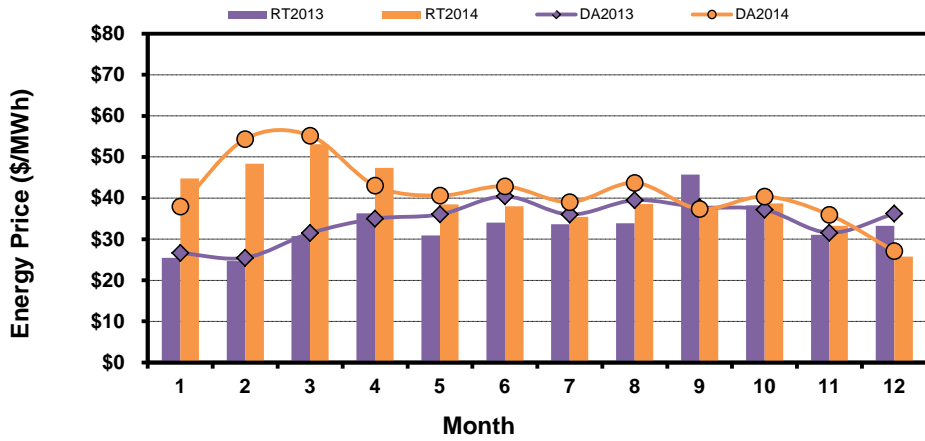
[next >>](#)

Note: \* Zonal load zone definition vs. Nodal comparable load zone definition: LZ\_Houston=LZ\_Houston; LZ\_West=LZ\_West; LZ\_North=(LZ\_North,LZ\_RAYBN); LZ\_South=(LZ\_South,LZ\_CPS,LZ\_AEN,LZ\_LCRA)

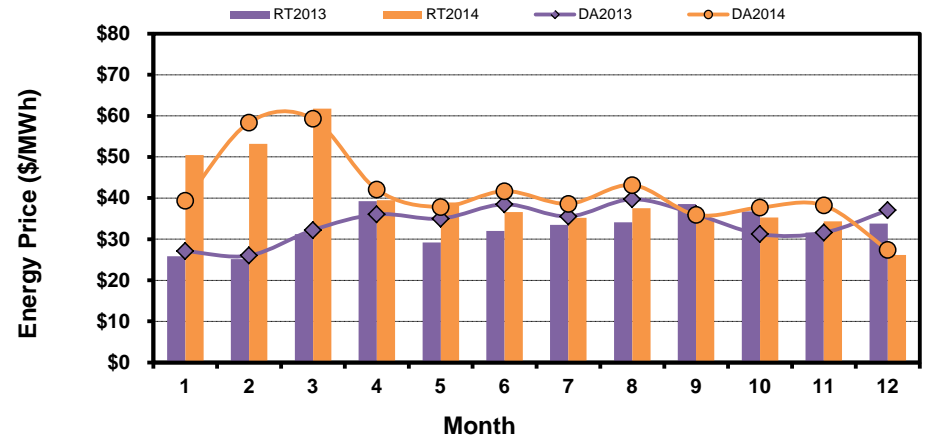
# Load Zone Monthly Average Energy Price DA vs RT

(avg. DA & RT SPPs weighted by Real Time Settlement Loads)  
 (Nodal load zone made comparable to zonal system Load Zone definitions\*)

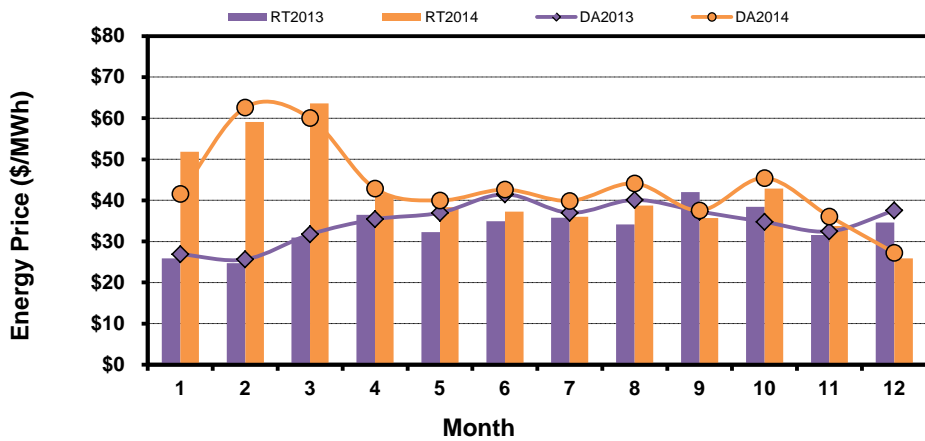
### Houston Zone



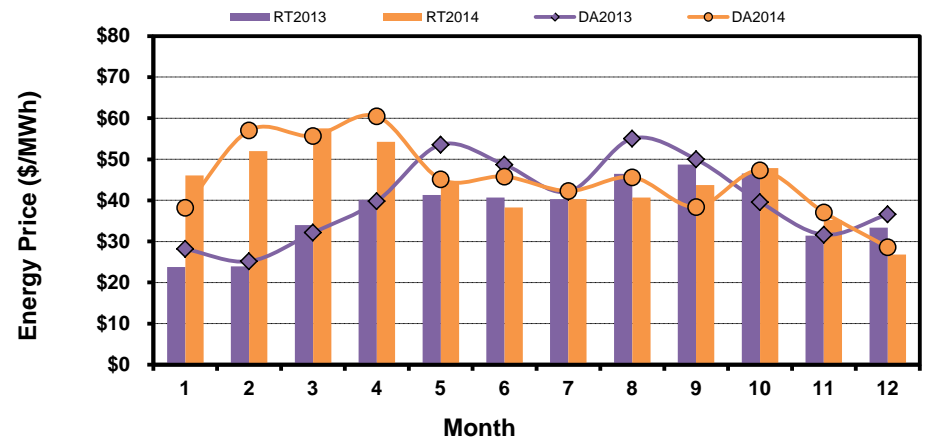
### North Zone



### South Zone



### West Zone



[Home <<](#)

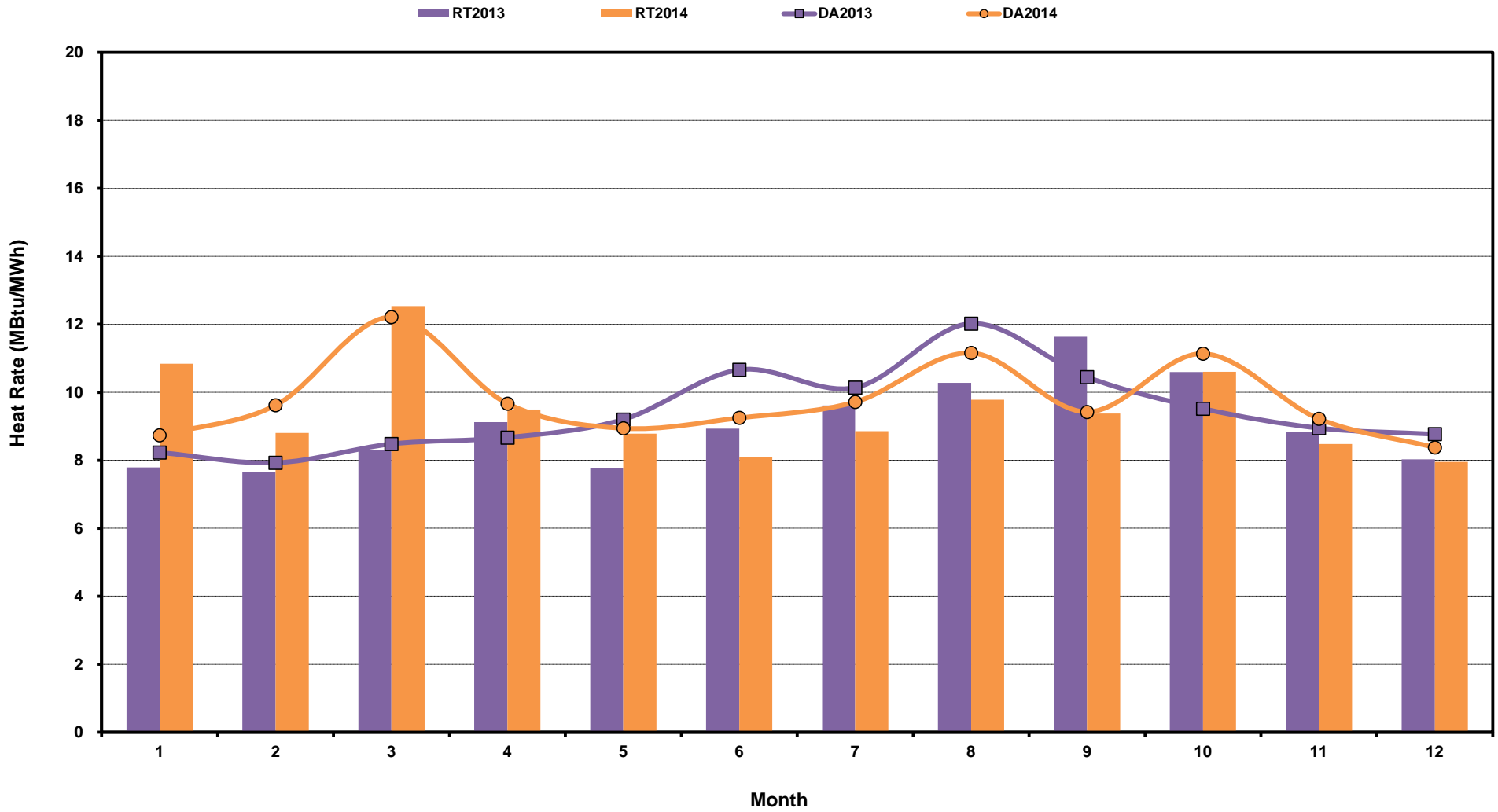
[previous <<](#)

[next >>](#)

**Note:** \* Zonal load zone definition vs. Nodal comparable load zone definition: LZ\_Houston=LZ\_Houston; LZ\_West=LZ\_West; LZ\_North=(LZ\_North,LZ\_RAYBN); LZ\_South=(LZ\_South,LZ\_CPS,LZ\_AEN,LZ\_LCRA)

# ERCOT-Wide Monthly Implied Heat Rate DA vs RT

(avg. heat rates weighted by Real Time Settlement Loads)



[Home <<](#)

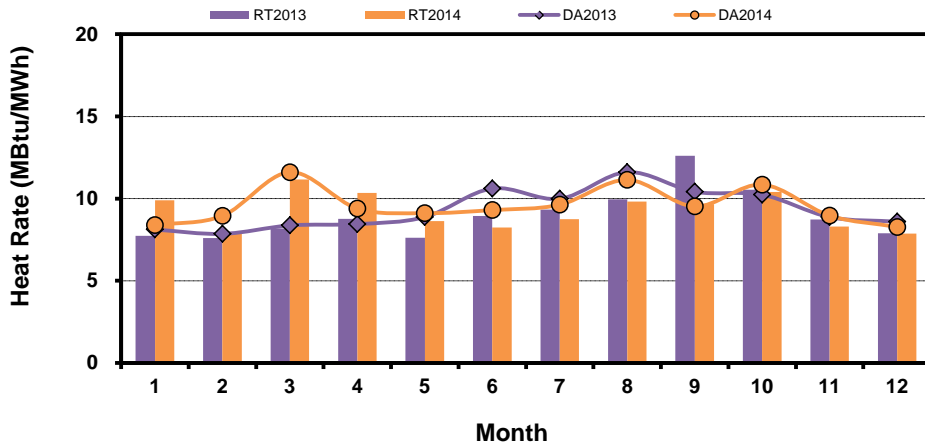
[previous <<](#)

[next >>](#)

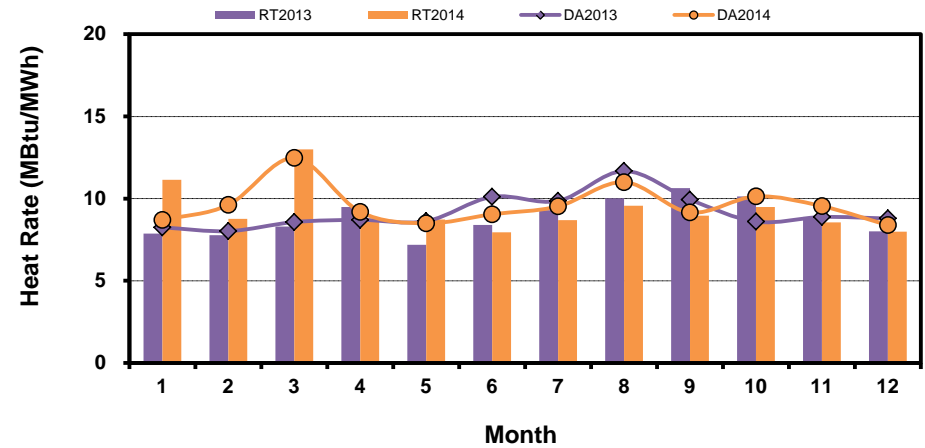
# Load Zone Monthly Implied Heat Rate DA vs RT

(avg. heat rates weighted by Real Time Settlement Loads)  
 (Nodal load zone made comparable to zonal system Load Zone definitions\*)

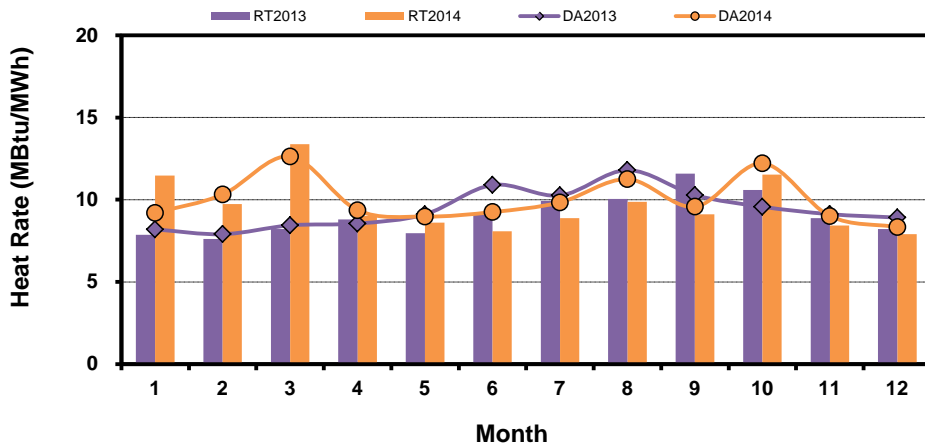
### Houston Zone



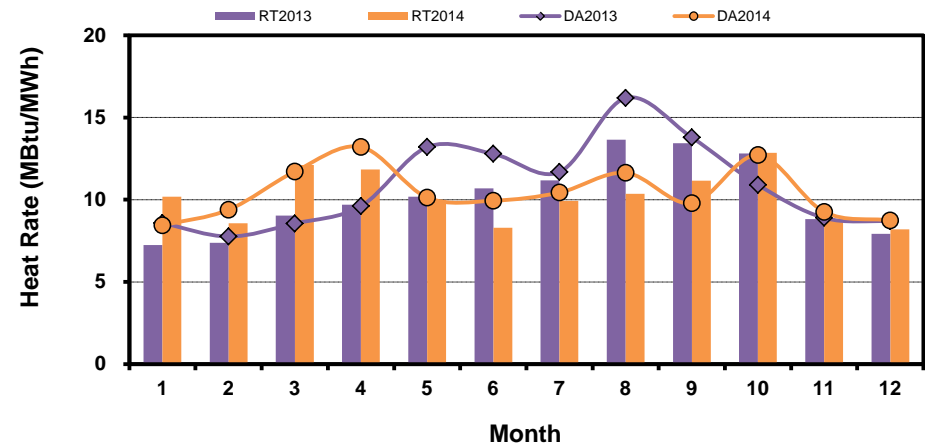
### North Zone



### South Zone



### West Zone



[Home <<](#)

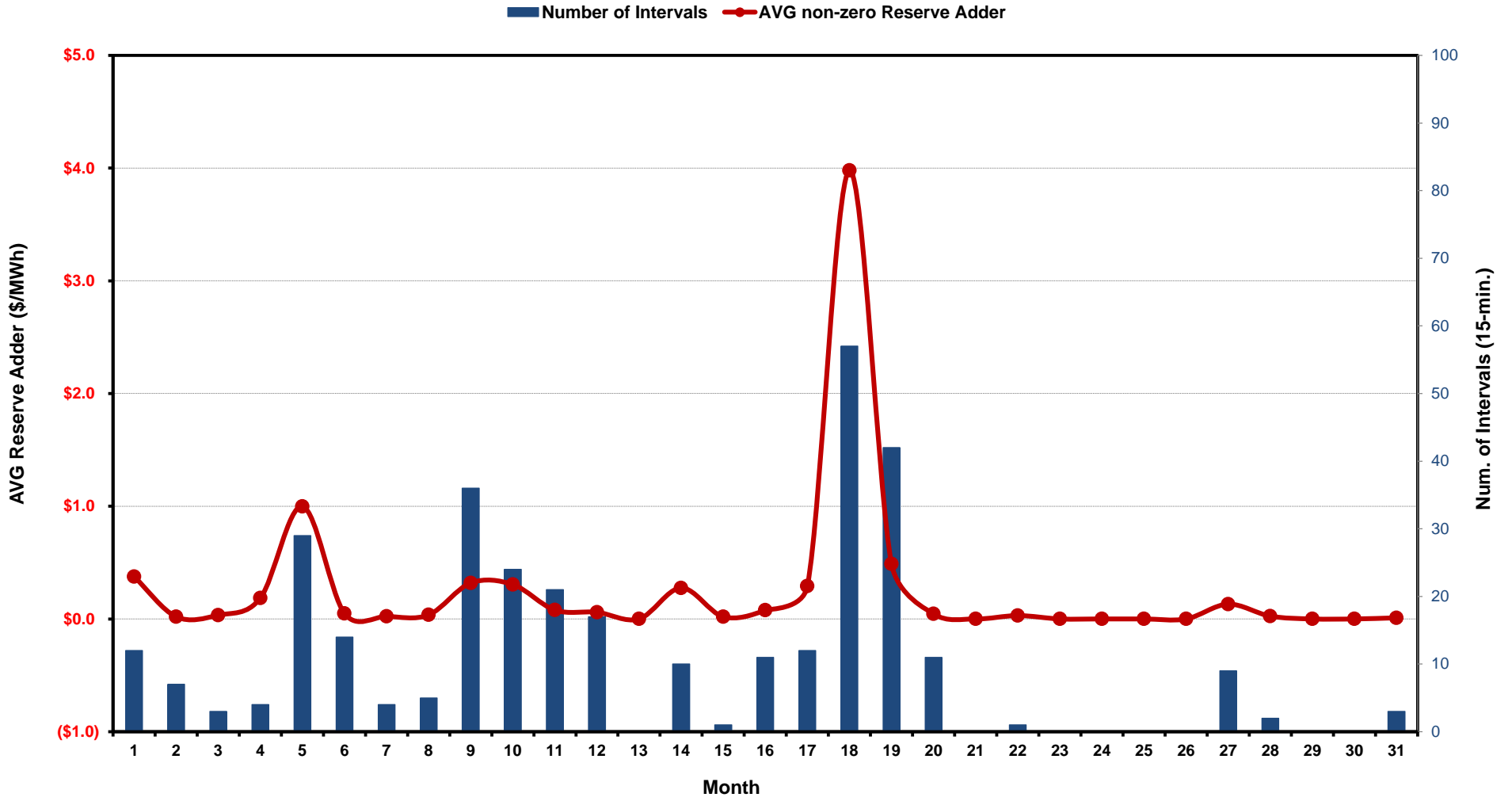
[previous <<](#)

[next >>](#)

**Note:** \* Zonal load zone definition vs. Nodal comparable load zone definition: LZ\_Houston=LZ\_Houston; LZ\_West=LZ\_West; LZ\_North=(LZ\_North,LZ\_RAYBN); LZ\_South=(LZ\_South,LZ\_CPS,LZ\_AEN,LZ\_LCRA)

# Daily Average Reserve Adder Value and Duration

## Dec-2014



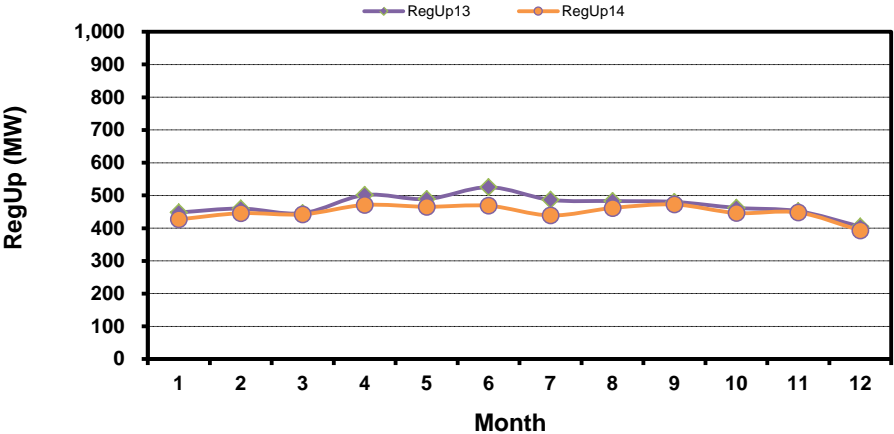
[Home <<](#)

[previous <<](#)

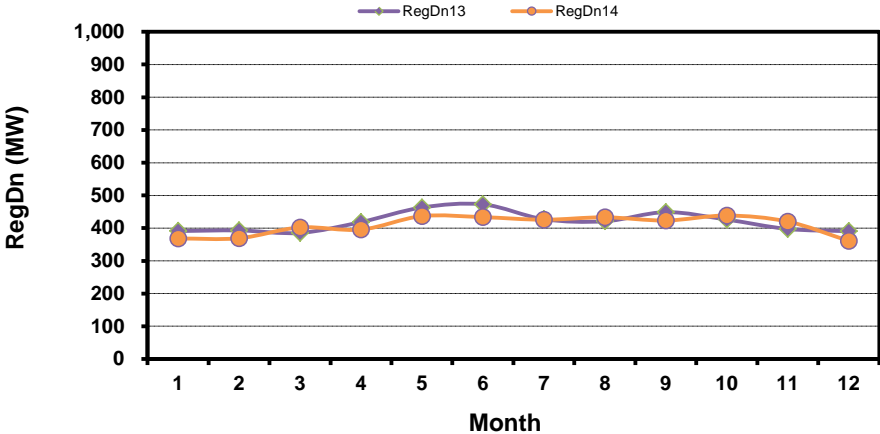
[next >>](#)

# Monthly Average of Ancillary Services Required MW

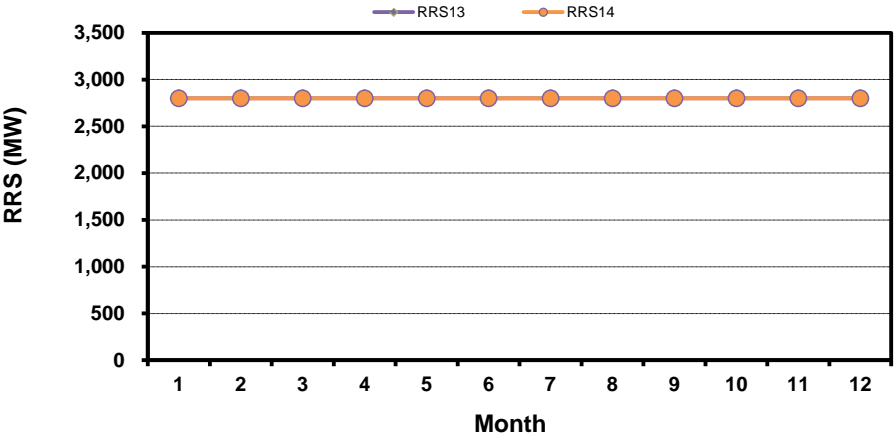
## Regulation Up



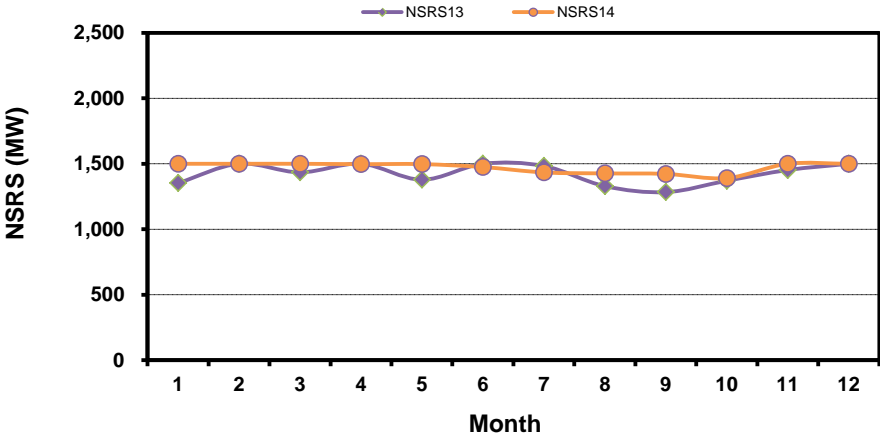
## Regulation Down



## Responsive Reserve



## Non-Spin Reserve



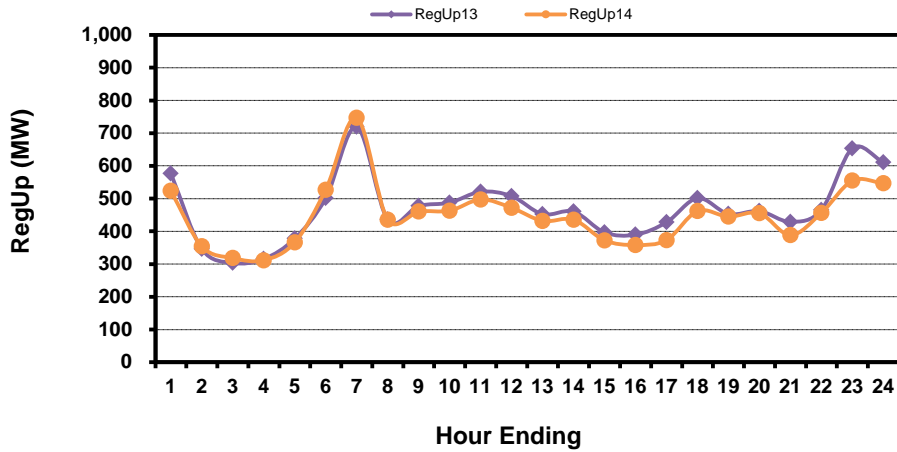
[Home <<](#)

[previous <<](#)

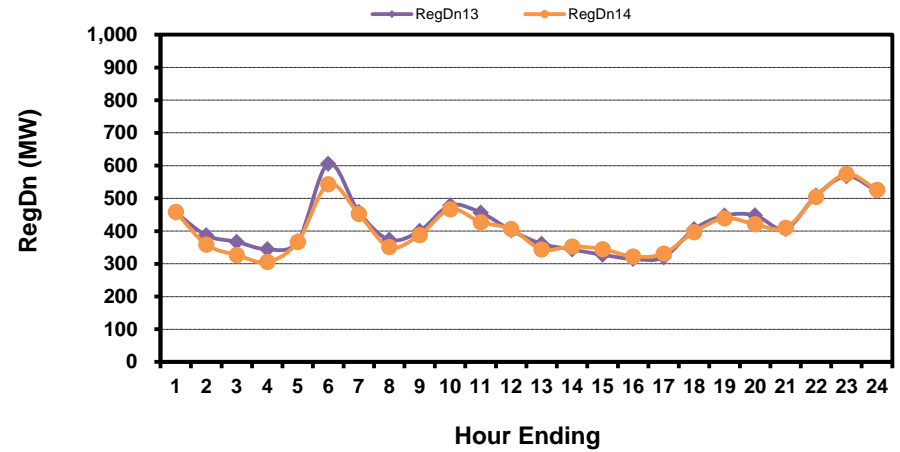
[next >>](#)

# Hourly Average of Ancillary Services Required MW

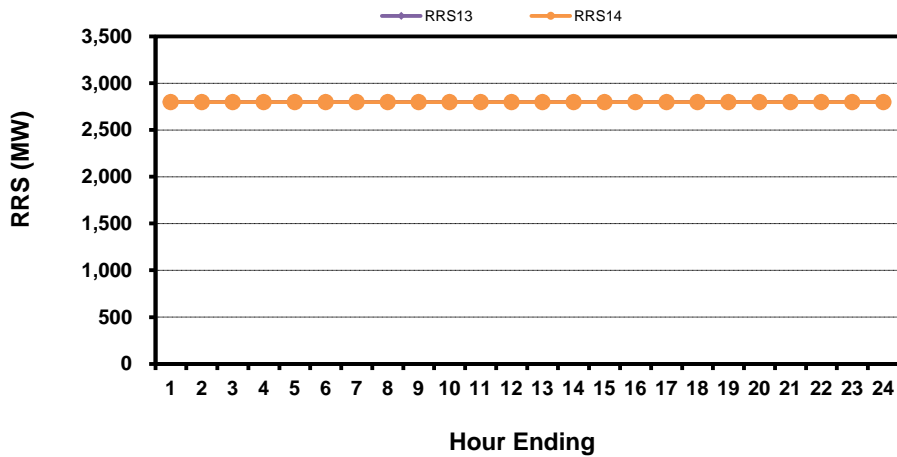
## Regulation Up



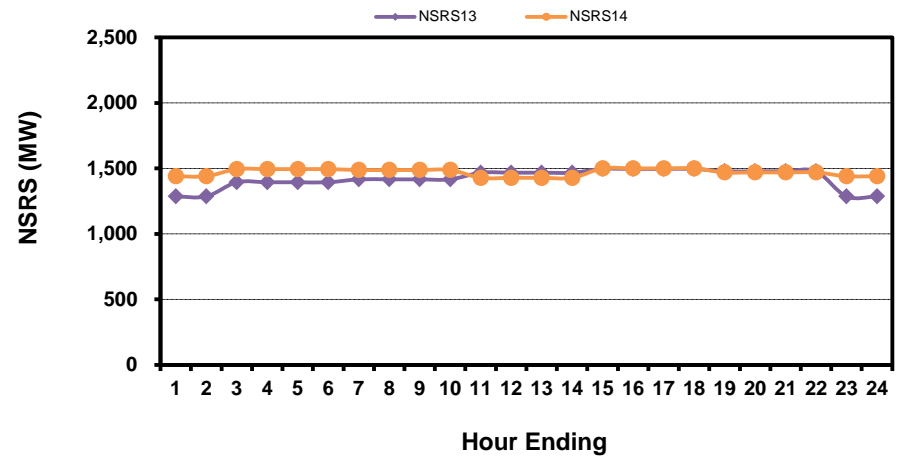
## Regulation Down



## Responsive Reserve



## Non-Spin Reserve



[Home <<](#)

[previous <<](#)

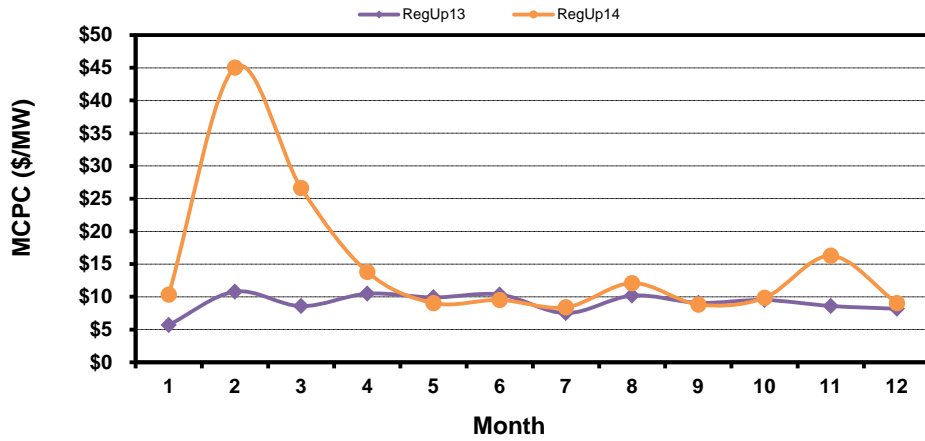
[next >>](#)



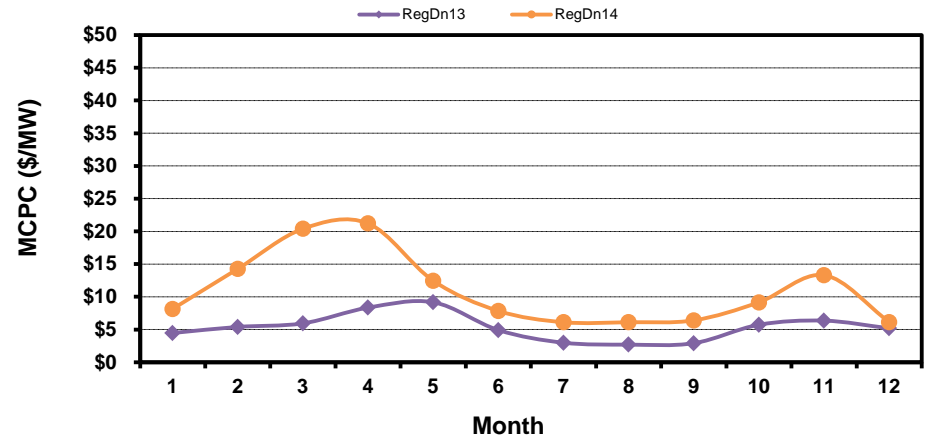
# Monthly Average Ancillary Services Price

(weighted by A/S Quantities Required)

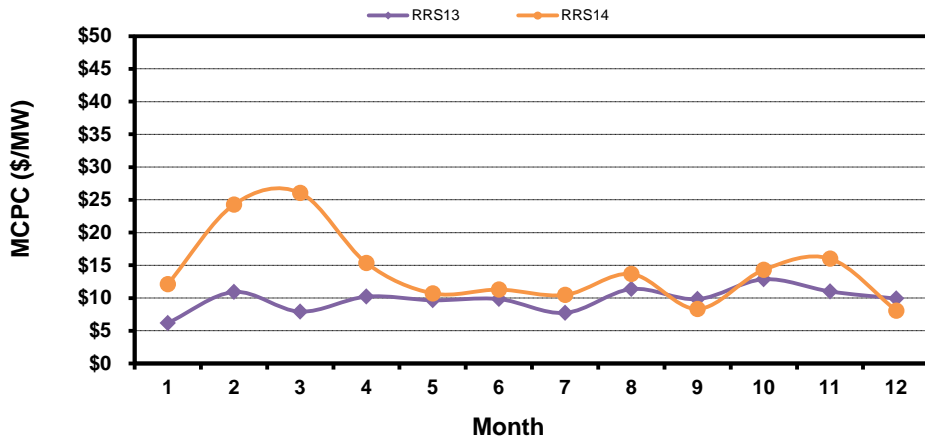
### Regulation Up



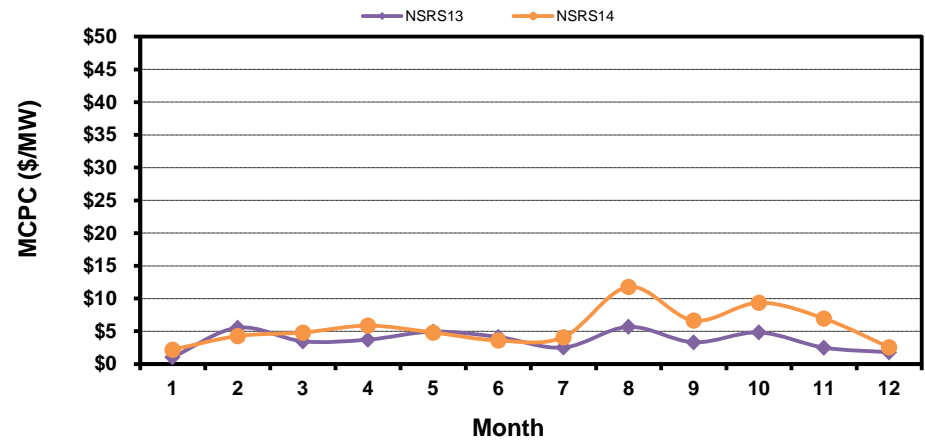
### Regulation Down



### Responsive Reserve



### Non-Spin Reserve

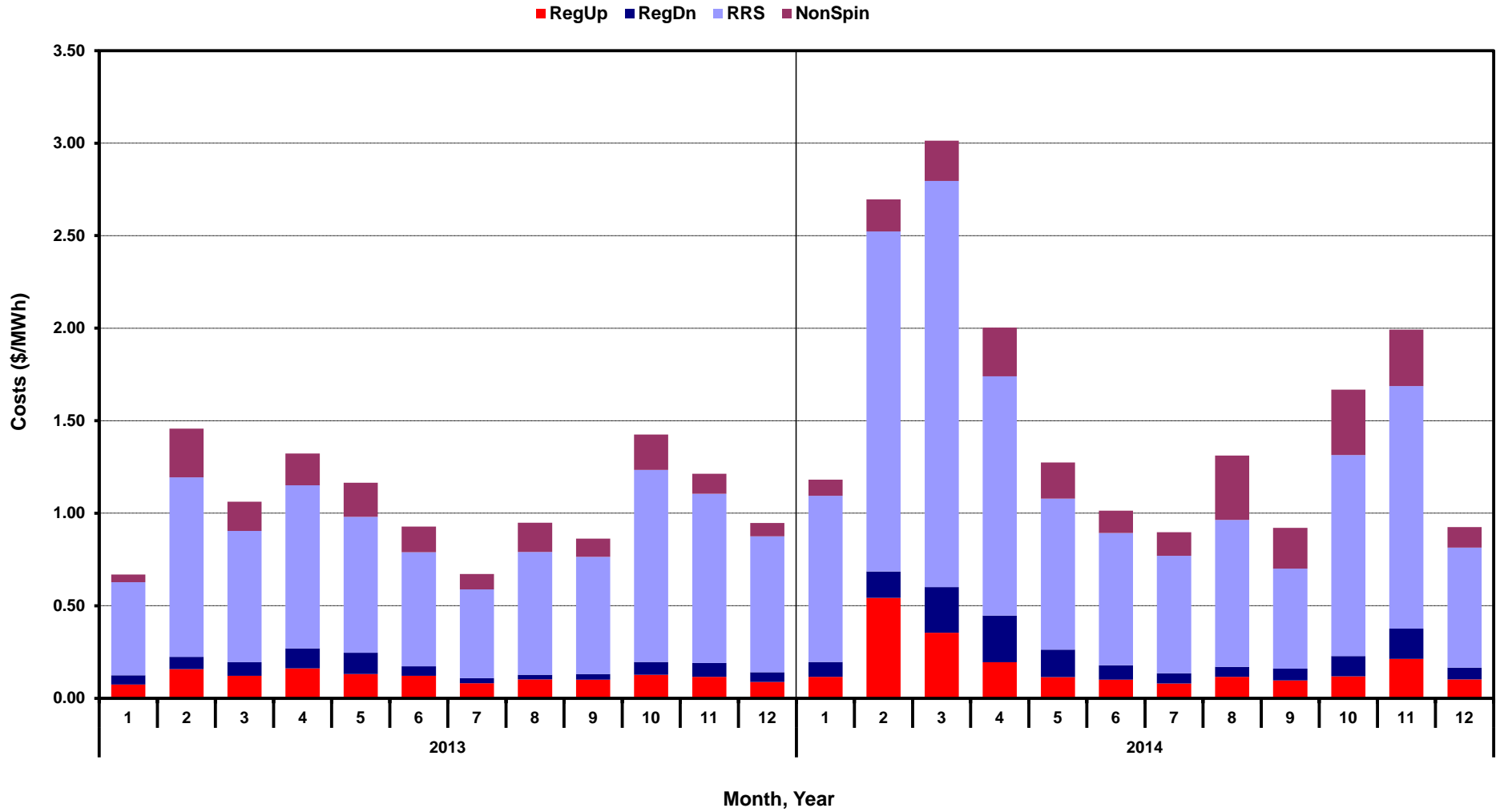


[Home <<](#)

[previous <<](#)

[next >>](#)

# Monthly Average A/S Cost per MWh Load

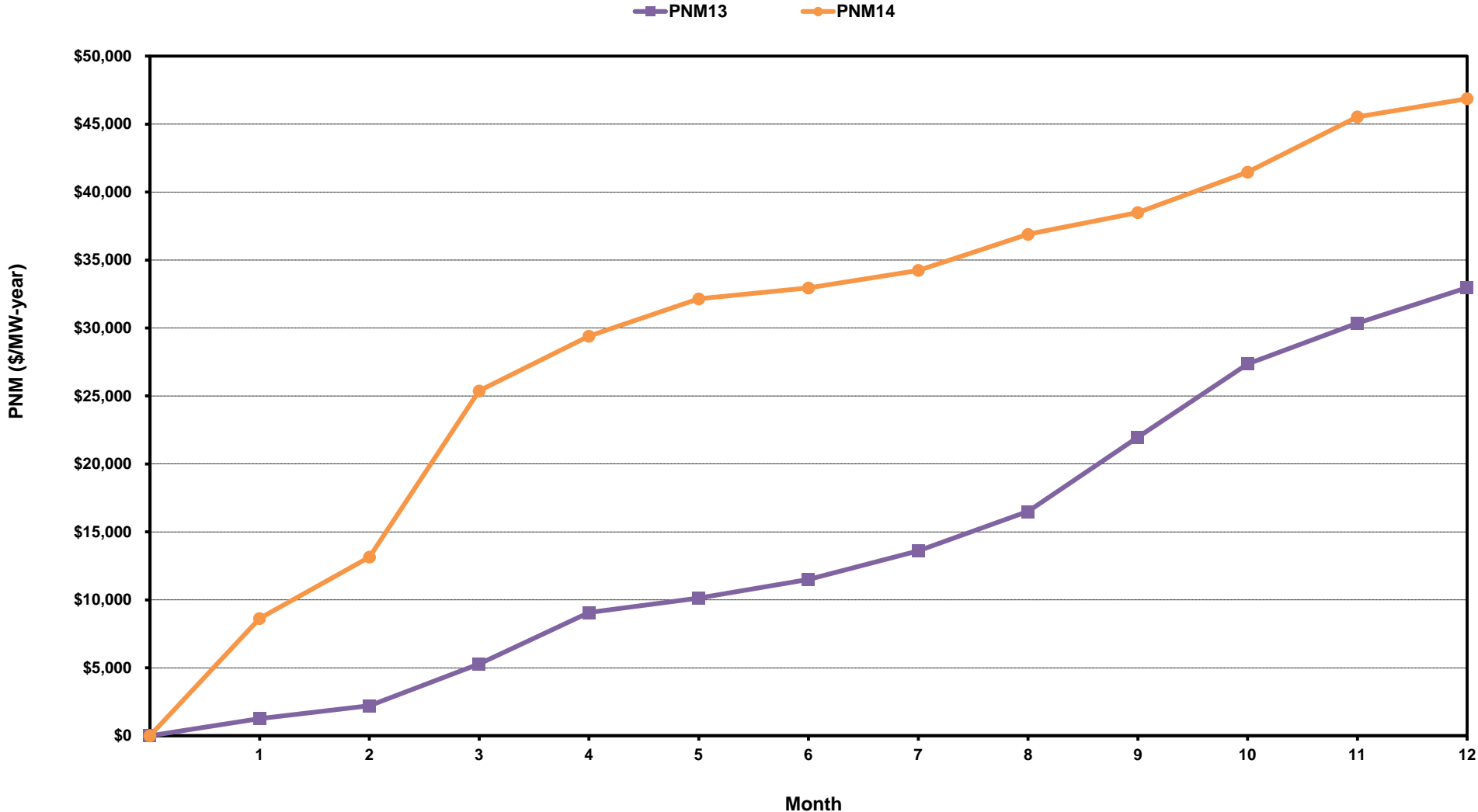


[Home <<](#)

[previous <<](#)

[next >>](#)

# ERCOT-Wide Cumulative Peaker Net Margin

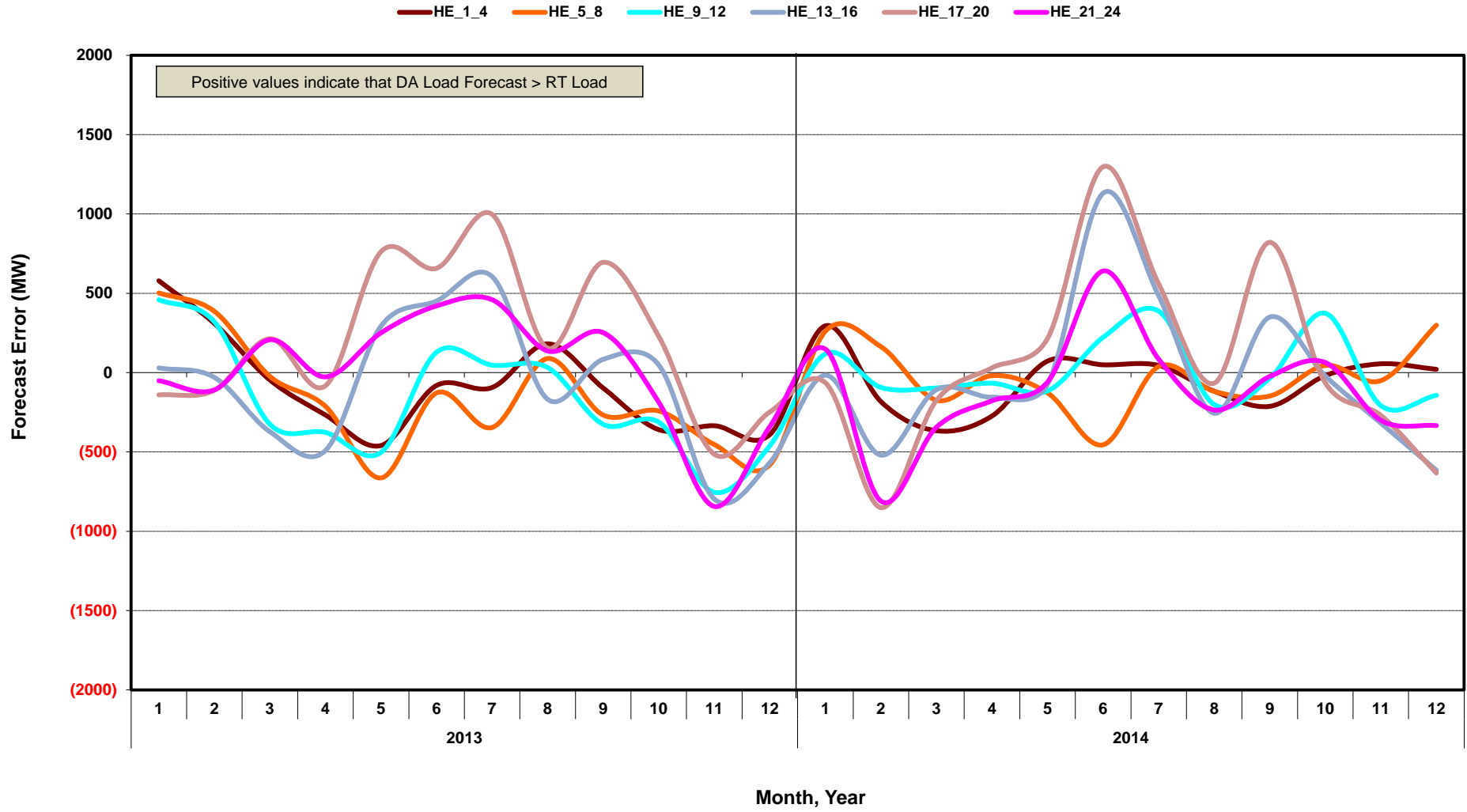


[Home <<](#)

[previous <<](#)

[next >>](#)

# DA vs. RT Load Forecast Error by Hour Ending

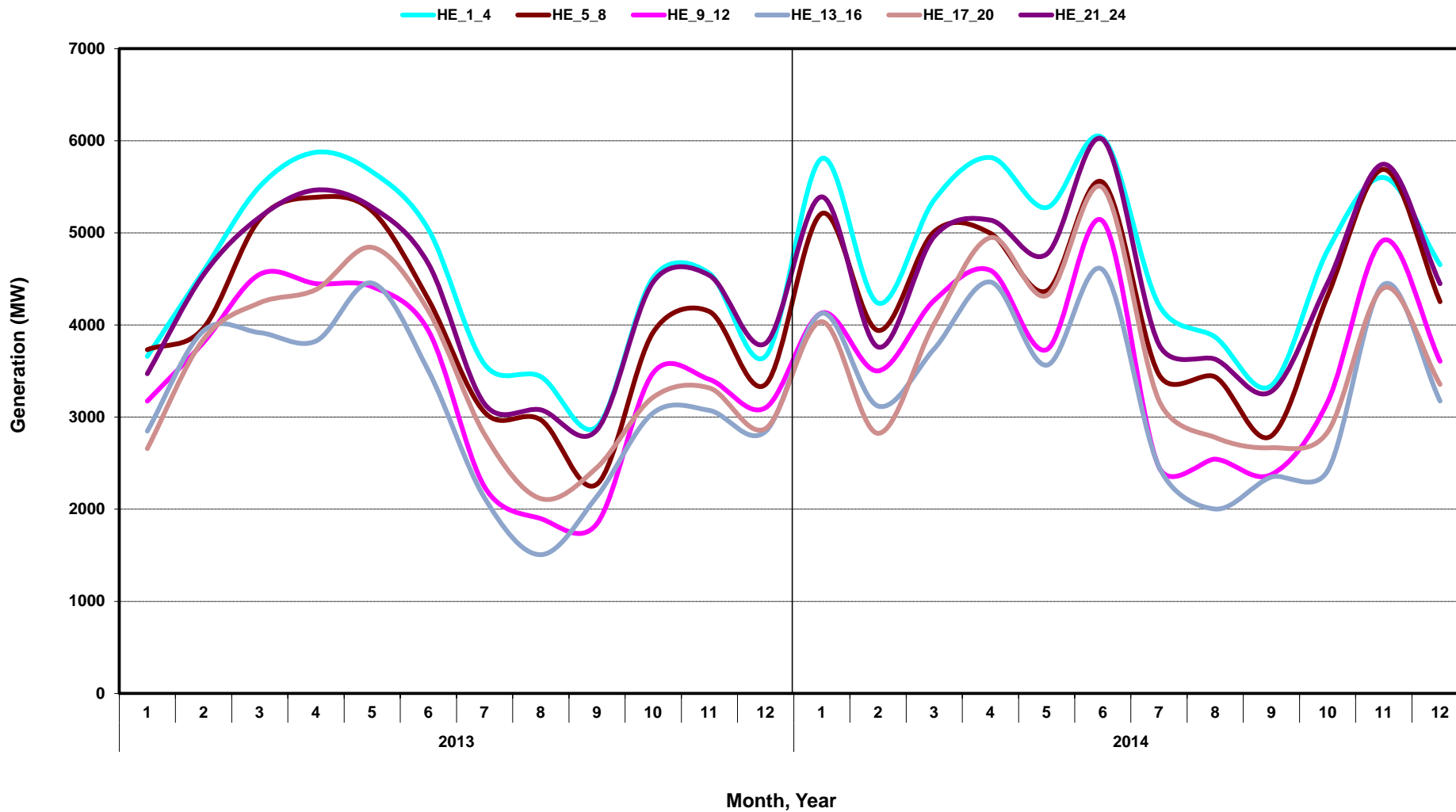


[Home <<](#)

[previous <<](#)

[next >>](#)

# Monthly Average of Wind Generation by Hour Ending



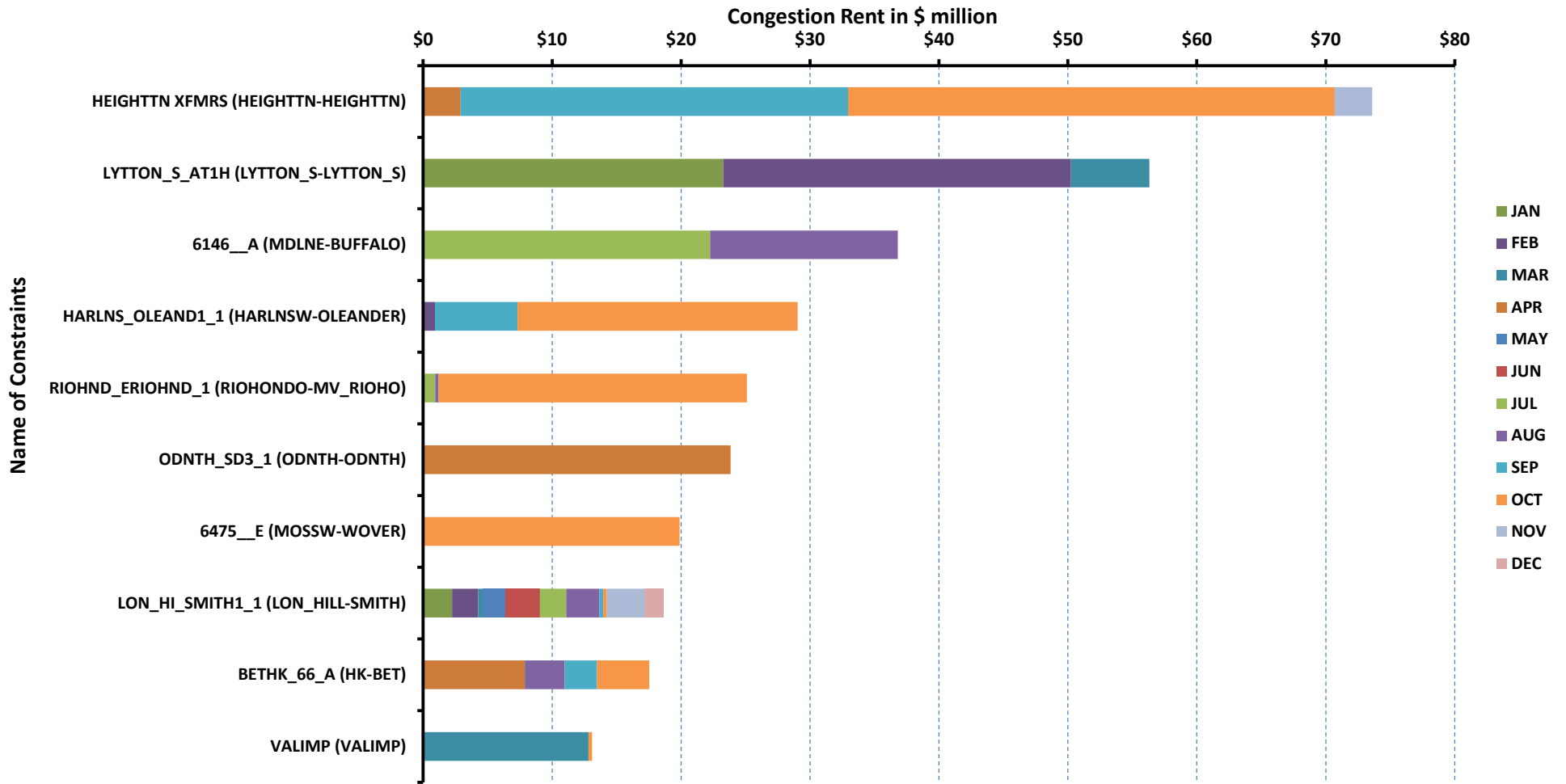
[Home <<](#)

[previous <<](#)

[next >>](#)

# RT Congestion Constraint Rankings - 1

## Top 10 Constraints by Total Congestion Rent



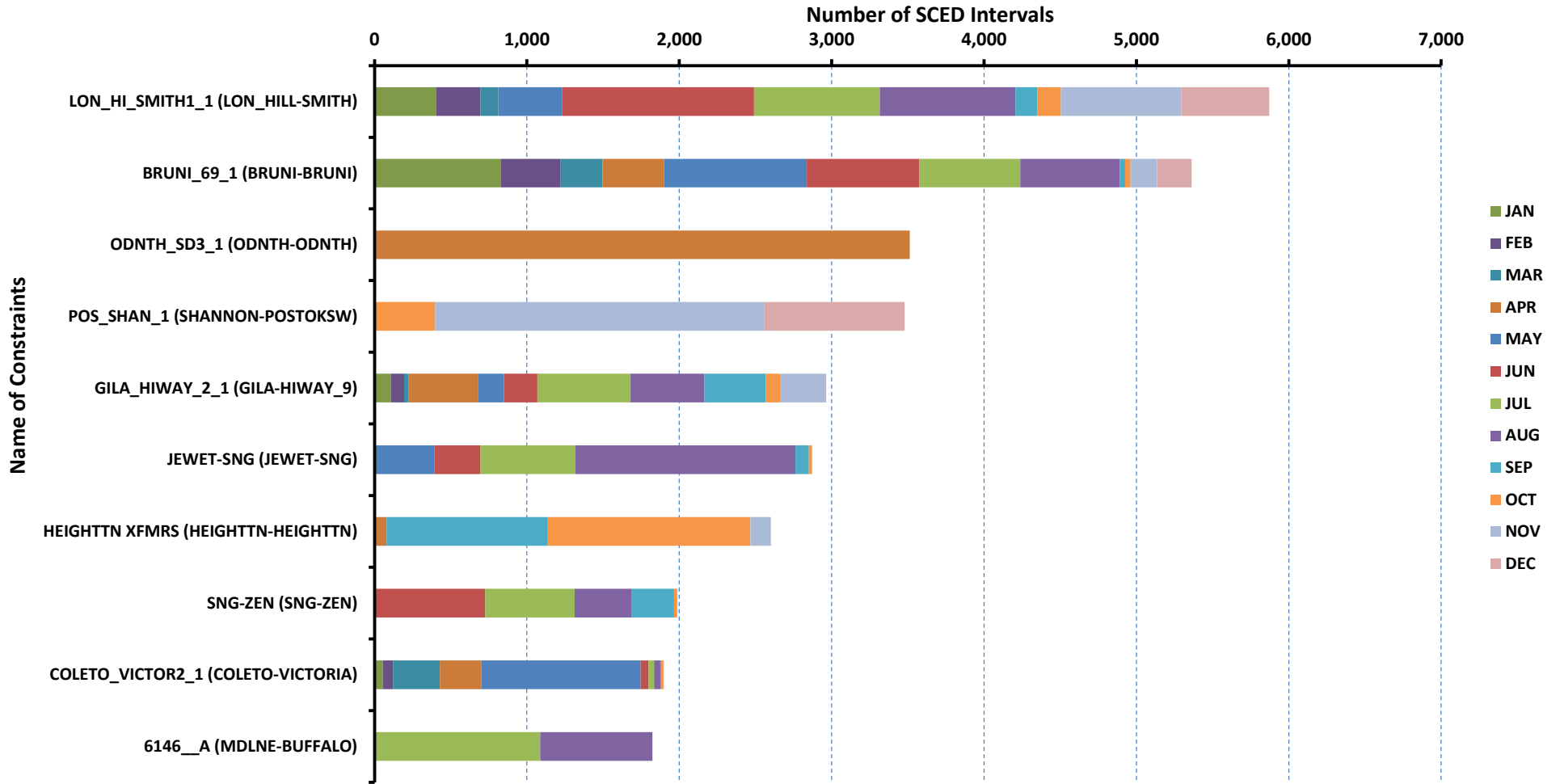
[Home <<](#)

[previous <<](#)

[next >>](#)

# RT Congestion Constraint Rankings - 2

## Top 10 Constraints by Binding Frequency



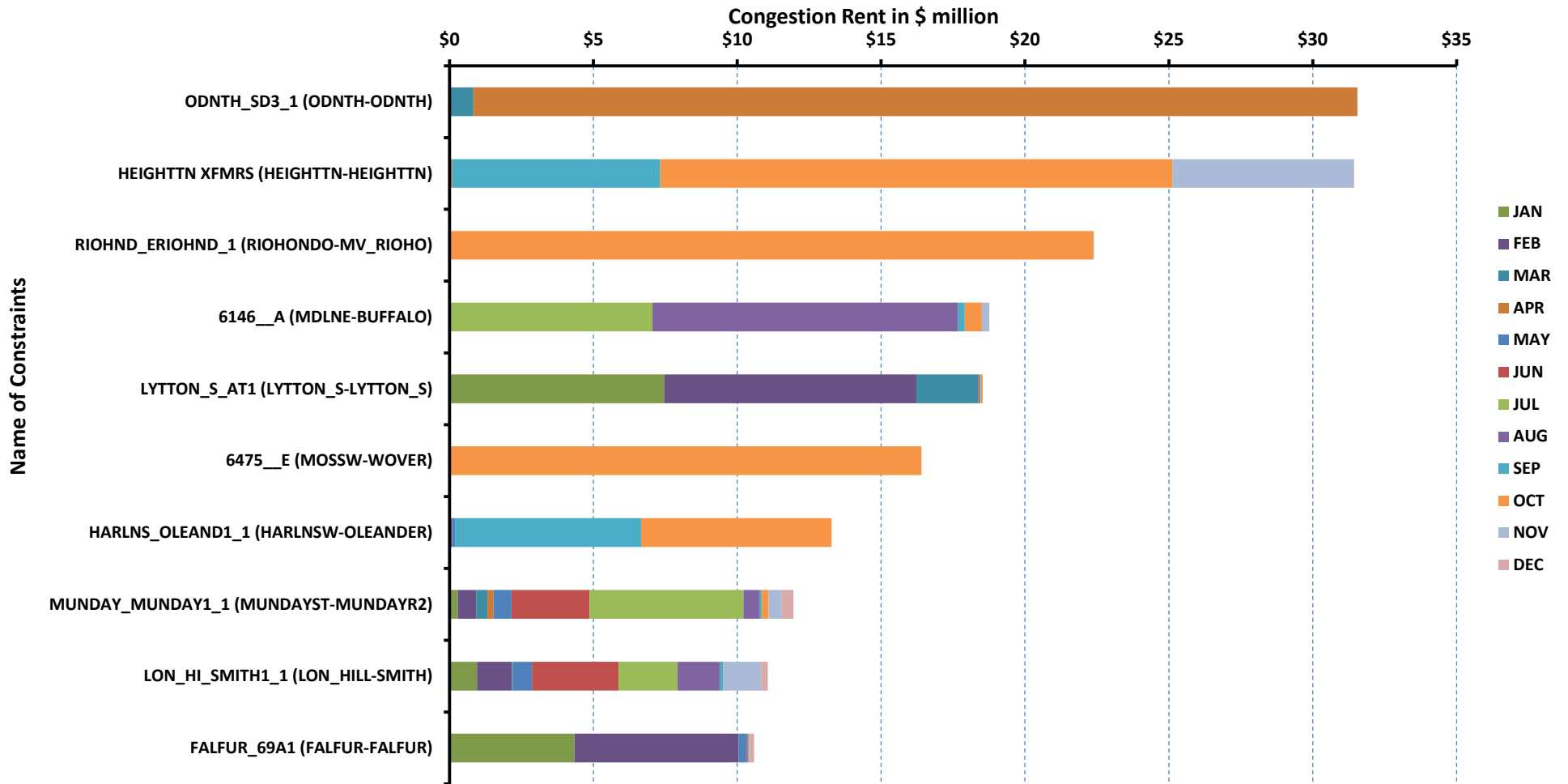
[Home <<](#)

[previous <<](#)

[next >>](#)

# DA Congestion Constraint Rankings - 1

## Top 10 Constraints by Total Congestion Rent



[Home <<](#)

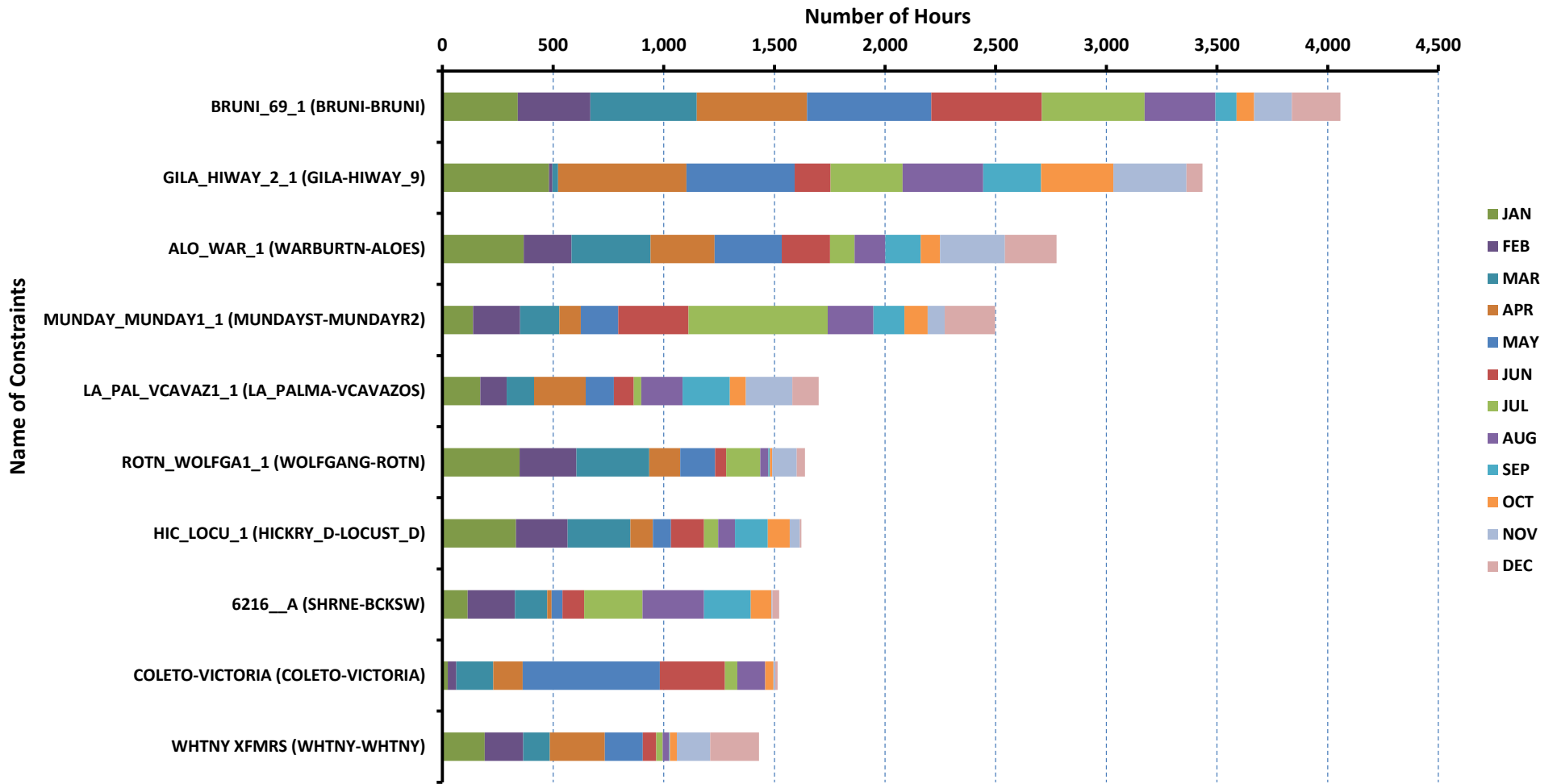
[previous <<](#)

[next >>](#)



# DA Congestion Constraint Rankings - 2

## Top 10 Constraints by Binding Frequency



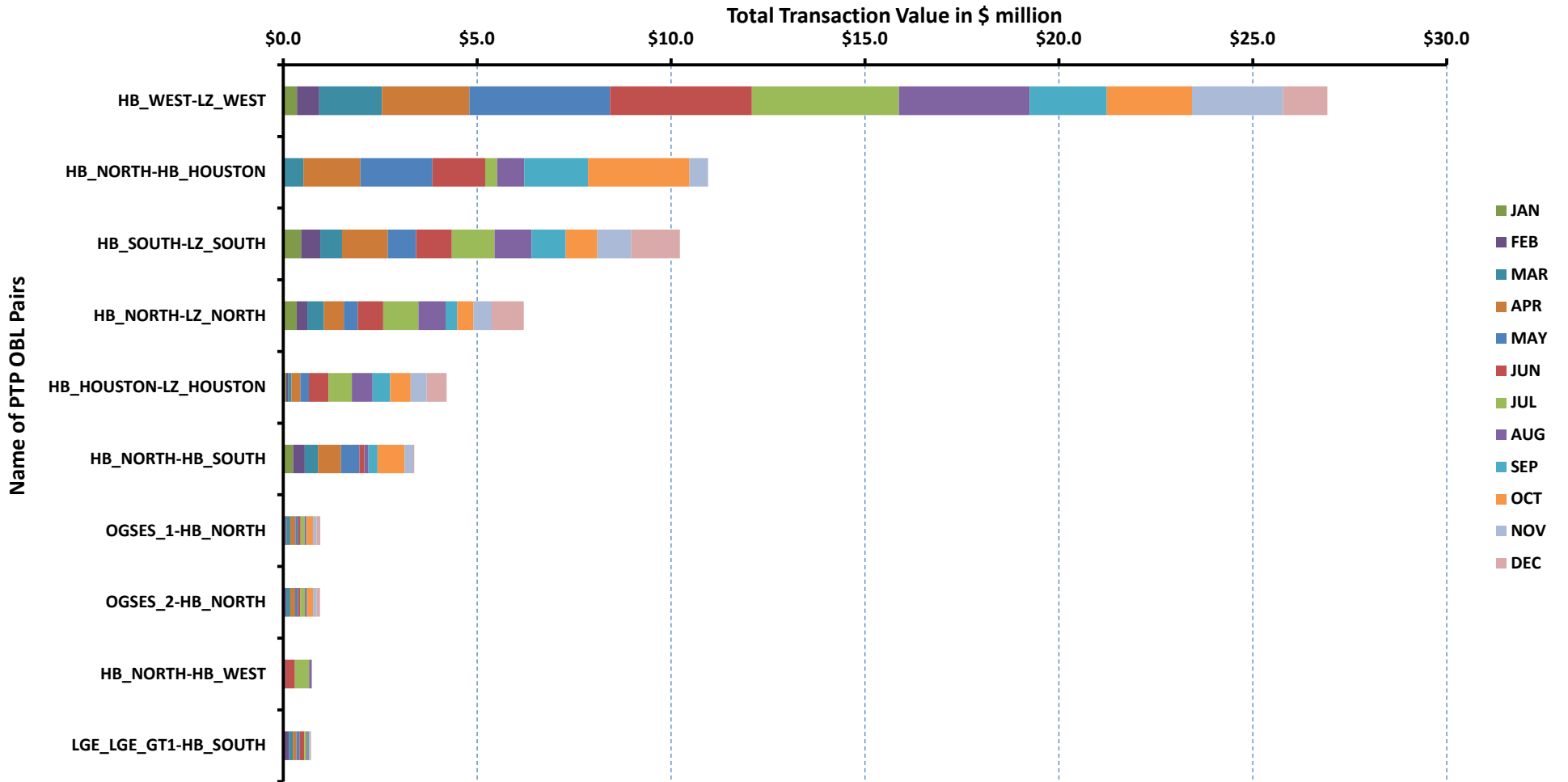
[Home <<](#)

[previous <<](#)

[next >>](#)

# Top 10 CRR Pairs Ranked by Monthly Auction Values - 1

## Top 10 PTP Obligations by Total Transaction Value



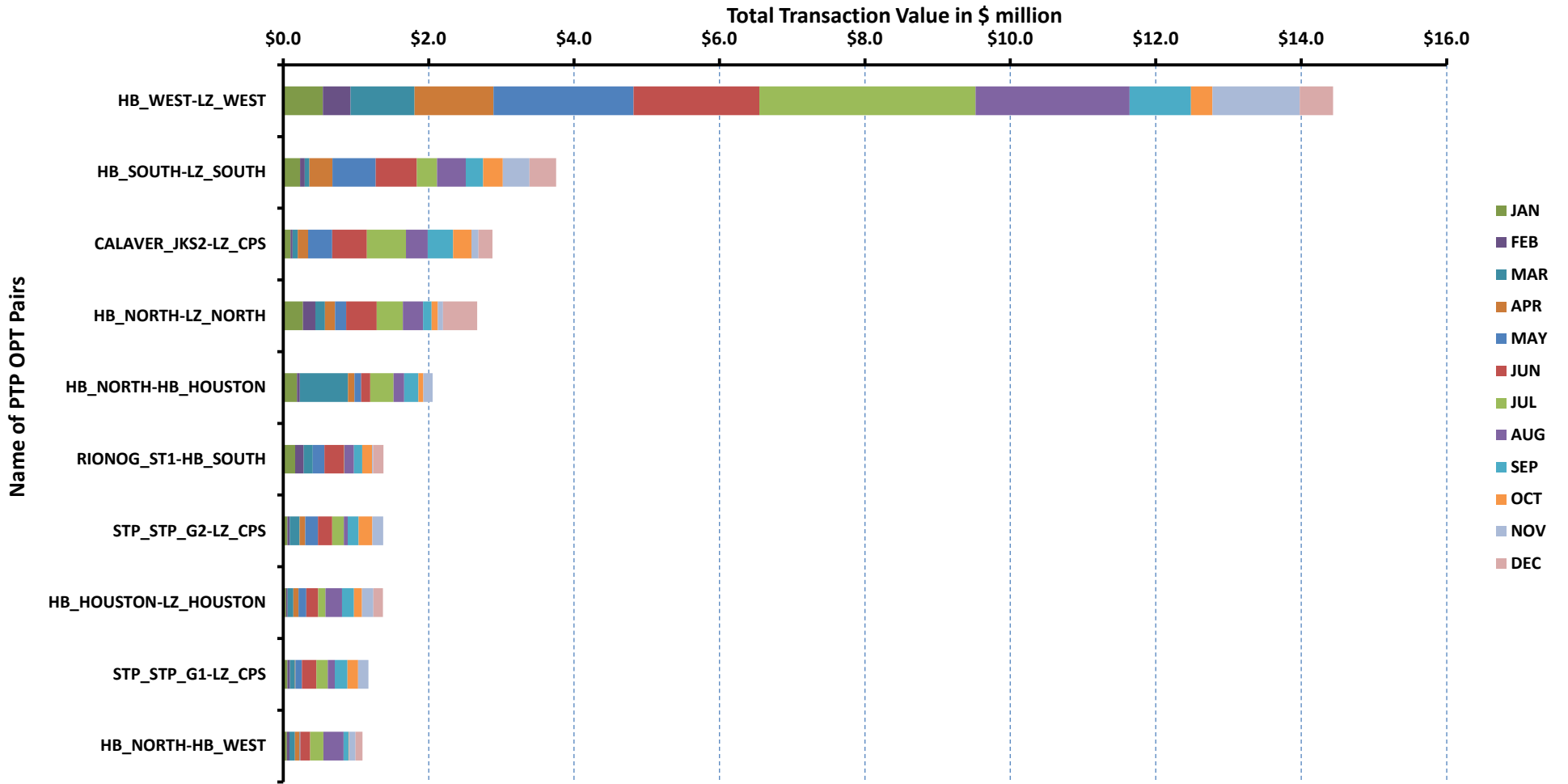
[Home <<](#)

[previous <<](#)

[next >>](#)

# Top 10 CRR Pairs Ranked by Monthly Auction Values - 2

## Top 10 PTP Options by Total Transaction Value



[Home <<](#)

[previous <<](#)

<b>year</b>	<b>month</b>	<b>dam_spp</b>	<b>rtm_spp</b>
2013	1	\$27.01	\$25.57
2013	2	\$25.70	\$24.80
2013	3	\$31.88	\$31.24
2013	4	\$35.88	\$37.75
2013	5	\$37.33	\$31.50
2013	6	\$40.59	\$34.00
2013	7	\$36.54	\$34.64
2013	8	\$40.88	\$34.95
2013	9	\$37.88	\$42.19
2013	10	\$34.57	\$38.47
2013	11	\$31.82	\$31.44
2013	12	\$36.93	\$33.83
2014	1	\$39.50	\$49.04
2014	2	\$58.39	\$53.46
2014	3	\$58.07	\$59.59
2014	4	\$44.25	\$43.45
2014	5	\$39.83	\$39.12
2014	6	\$42.60	\$37.31
2014	7	\$39.36	\$35.88
2014	8	\$43.77	\$38.37
2014	9	\$36.95	\$36.76
2014	10	\$41.44	\$39.45
2014	11	\$36.94	\$33.97
2014	12	\$27.41	\$26.01

[Home <<](#)

year	month	loadPEAK_Houston	loadPEAK_North	loadPEAK_South	loadPEAK_West	loadAVG_Houston	loadAVG_North	loadAVG_South	loadAVG_West
2013	1	12,085	21,117	14,994	3,706	8,740	13,629	9,247	2,849
2013	2	10,120	17,682	10,935	3,377	8,145	12,519	8,163	2,707
2013	3	12,452	18,293	12,467	3,355	8,441	11,859	8,350	2,647
2013	4	12,311	17,964	13,100	3,568	8,857	12,002	8,852	2,717
2013	5	15,564	21,127	15,548	4,164	10,292	13,411	10,178	2,977
2013	6	17,197	25,736	17,966	4,424	12,384	16,891	12,174	3,291
2013	7	17,179	26,101	17,412	4,376	12,254	17,280	12,323	3,306
2013	8	17,850	27,237	18,233	4,454	12,684	18,702	12,996	3,513
2013	9	17,296	25,601	17,055	4,325	11,938	16,648	11,548	3,239
2013	10	15,279	21,254	15,350	3,919	9,772	12,456	9,612	2,872
2013	11	11,830	18,774	13,442	3,825	8,819	12,696	9,216	2,942
2013	12	12,007	22,670	15,607	4,041	9,252	15,090	10,171	3,253
2014	1	13,651	24,123	17,347	4,213	9,355	14,910	10,232	3,290
2014	2	12,694	24,490	16,765	4,362	9,207	14,594	9,914	3,284
2014	3	12,611	23,478	15,028	4,252	8,752	12,605	8,776	3,106
2014	4	14,099	16,946	14,714	3,755	8,989	12,038	9,164	3,078
2014	5	14,573	19,552	15,082	4,314	10,120	13,354	10,049	3,231
2014	6	16,916	22,925	16,896	4,633	12,227	16,153	12,205	3,571
2014	7	17,573	25,096	17,817	4,725	12,668	17,094	12,767	3,720
2014	8	17,647	26,091	18,257	4,940	12,913	18,060	13,482	3,821
2014	9	17,315	25,730	17,648	4,961	11,782	16,062	11,758	3,459
2014	10	16,529	22,387	16,314	4,312	10,147	13,200	10,298	3,231
2014	11	12,034	21,098	14,367	4,233	9,124	12,796	9,003	3,277
2014	12	11,430	19,083	13,968	4,398	9,000	13,287	9,180	3,382

[Home <<](#)

year	month	avgRTMp_Houston	avgRTMp_North	avgRTMp_South	avgRTMp_West	avgDAMP_Houston	avgDAMP_North	avgDAMP_South	avgDAMP_West
2013	1	\$25.42	\$25.86	\$25.84	\$23.76	\$26.65	\$27.08	\$26.90	\$28.17
2013	2	\$24.65	\$25.18	\$24.68	\$23.92	\$25.48	\$26.02	\$25.63	\$25.17
2013	3	\$30.76	\$31.19	\$30.92	\$33.96	\$31.46	\$32.23	\$31.73	\$32.15
2013	4	\$36.30	\$39.25	\$36.45	\$40.11	\$34.97	\$36.03	\$35.40	\$39.78
2013	5	\$30.93	\$29.18	\$32.29	\$41.29	\$36.02	\$35.00	\$36.98	\$53.56
2013	6	\$34.06	\$32.00	\$34.90	\$40.69	\$40.41	\$38.49	\$41.48	\$48.68
2013	7	\$33.61	\$33.46	\$35.80	\$40.28	\$36.01	\$35.54	\$36.98	\$42.12
2013	8	\$33.89	\$34.08	\$34.14	\$46.45	\$39.48	\$39.71	\$40.12	\$55.05
2013	9	\$45.69	\$38.54	\$42.01	\$48.71	\$37.77	\$36.03	\$37.28	\$49.99
2013	10	\$38.26	\$36.79	\$38.46	\$46.54	\$37.16	\$31.23	\$34.75	\$39.59
2013	11	\$31.05	\$31.61	\$31.60	\$31.40	\$31.57	\$31.59	\$32.45	\$31.64
2013	12	\$33.25	\$33.77	\$34.59	\$33.36	\$36.22	\$37.03	\$37.55	\$36.59
2014	1	\$44.80	\$50.43	\$51.86	\$46.03	\$37.96	\$39.34	\$41.58	\$38.18
2014	2	\$48.35	\$53.20	\$59.07	\$51.96	\$54.35	\$58.37	\$62.62	\$57.02
2014	3	\$53.10	\$61.78	\$63.63	\$57.56	\$55.19	\$59.29	\$60.04	\$55.67
2014	4	\$47.32	\$39.44	\$41.30	\$54.24	\$43.02	\$42.08	\$42.87	\$60.46
2014	5	\$38.47	\$38.90	\$38.32	\$44.48	\$40.59	\$37.85	\$39.98	\$45.14
2014	6	\$38.02	\$36.62	\$37.24	\$38.26	\$42.87	\$41.69	\$42.62	\$45.81
2014	7	\$35.43	\$35.19	\$35.99	\$40.28	\$39.02	\$38.61	\$39.87	\$42.28
2014	8	\$38.53	\$37.51	\$38.74	\$40.66	\$43.70	\$43.16	\$44.12	\$45.64
2014	9	\$37.93	\$35.14	\$35.73	\$43.75	\$37.35	\$35.92	\$37.54	\$38.39
2014	10	\$38.71	\$35.30	\$42.89	\$47.82	\$40.37	\$37.70	\$45.44	\$47.30
2014	11	\$33.27	\$34.30	\$33.74	\$35.22	\$35.92	\$38.22	\$36.10	\$37.10
2014	12	\$25.73	\$26.12	\$25.84	\$26.79	\$27.09	\$27.43	\$27.26	\$28.61

[Home <<](#)

<b>year</b>	<b>month</b>	<b>gasprice</b>	<b>rtm_spp</b>	<b>HR_rtm</b>	<b>dam_spp</b>	<b>HR_dam</b>
2013	1	\$3.28	\$25.57	7.79	\$27.01	8.23
2013	2	\$3.24	\$24.80	7.65	\$25.70	7.93
2013	3	\$3.76	\$31.24	8.31	\$31.88	8.48
2013	4	\$4.14	\$37.75	9.12	\$35.88	8.67
2013	5	\$4.06	\$31.50	7.76	\$37.33	9.20
2013	6	\$3.81	\$34.00	8.93	\$40.59	10.66
2013	7	\$3.60	\$34.64	9.61	\$36.54	10.14
2013	8	\$3.40	\$34.95	10.28	\$40.88	12.02
2013	9	\$3.63	\$42.19	11.64	\$37.88	10.45
2013	10	\$3.63	\$38.47	10.59	\$34.57	9.52
2013	11	\$3.56	\$31.44	8.84	\$31.82	8.95
2013	12	\$4.21	\$33.83	8.03	\$36.93	8.77
2014	1	\$4.52	\$49.04	10.84	\$39.50	8.73
2014	2	\$6.07	\$53.46	8.81	\$58.39	9.62
2014	3	\$4.75	\$59.59	12.53	\$58.07	12.21
2014	4	\$4.58	\$43.45	9.49	\$44.25	9.67
2014	5	\$4.45	\$39.12	8.78	\$39.83	8.94
2014	6	\$4.61	\$37.31	8.10	\$42.60	9.25
2014	7	\$4.05	\$35.88	8.86	\$39.36	9.71
2014	8	\$3.92	\$38.37	9.78	\$43.77	11.16
2014	9	\$3.92	\$36.76	9.37	\$36.95	9.42
2014	10	\$3.72	\$39.45	10.60	\$41.44	11.14
2014	11	\$4.01	\$33.97	8.48	\$36.94	9.22
2014	12	\$3.27	\$26.01	7.95	\$27.41	8.38

[Home <<](#)

year	month	HRdam_Houston	HRdam_South	HRdam_North	HRdam_West	HRrtm_Houston	HRrtm_South	HRrtm_North	HRrtm_West
2013	1	8.12	8.20	8.25	8.58	7.74	7.87	7.88	7.24
2013	2	7.86	7.90	8.02	7.76	7.60	7.61	7.77	7.38
2013	3	8.37	8.44	8.57	8.55	8.18	8.22	8.30	9.03
2013	4	8.45	8.55	8.71	9.61	8.77	8.81	9.48	9.69
2013	5	8.88	9.11	8.63	13.20	7.62	7.96	7.19	10.17
2013	6	10.62	10.90	10.11	12.79	8.95	9.17	8.40	10.69
2013	7	9.99	10.26	9.86	11.69	9.33	9.93	9.28	11.17
2013	8	11.61	11.80	11.68	16.19	9.97	10.04	10.02	13.66
2013	9	10.41	10.28	9.94	13.79	12.60	11.58	10.63	13.43
2013	10	10.23	9.57	8.60	10.90	10.54	10.59	10.13	12.82
2013	11	8.88	9.12	8.88	8.90	8.73	8.89	8.89	8.83
2013	12	8.60	8.91	8.79	8.69	7.89	8.21	8.02	7.92
2014	1	8.39	9.19	8.70	8.44	9.90	11.47	11.15	10.18
2014	2	8.95	10.32	9.62	9.39	7.96	9.73	8.76	8.56
2014	3	11.61	12.63	12.47	11.71	11.17	13.38	12.99	12.11
2014	4	9.40	9.36	9.19	13.21	10.34	9.02	8.62	11.85
2014	5	9.11	8.98	8.50	10.13	8.64	8.60	8.73	9.98
2014	6	9.30	9.25	9.05	9.94	8.25	8.08	7.95	8.30
2014	7	9.63	9.84	9.53	10.43	8.74	8.88	8.68	9.94
2014	8	11.14	11.25	11.00	11.63	9.82	9.88	9.56	10.37
2014	9	9.52	9.57	9.16	9.79	9.67	9.11	8.96	11.15
2014	10	10.85	12.21	10.13	12.71	10.40	11.53	9.49	12.85
2014	11	8.97	9.01	9.54	9.26	8.30	8.42	8.56	8.79
2014	12	8.28	8.33	8.38	8.74	7.86	7.90	7.98	8.19

[Home <<](#)



YEAR	MONTH	DAY	Intervals	RS_Adder
2014	12	1	12	\$0.38
2014	12	2	7	\$0.02
2014	12	3	3	\$0.03
2014	12	4	4	\$0.19
2014	12	5	29	\$1.00
2014	12	6	14	\$0.05
2014	12	7	4	\$0.02
2014	12	8	5	\$0.04
2014	12	9	36	\$0.32
2014	12	10	24	\$0.31
2014	12	11	21	\$0.08
2014	12	12	17	\$0.06
2014	12	13	0	\$0.00
2014	12	14	10	\$0.28
2014	12	15	1	\$0.02
2014	12	16	11	\$0.08
2014	12	17	12	\$0.29
2014	12	18	57	\$3.98
2014	12	19	42	\$0.49
2014	12	20	11	\$0.05
2014	12	21	0	\$0.00
2014	12	22	1	\$0.03
2014	12	23	0	\$0.00
2014	12	24	0	\$0.00
2014	12	25	0	\$0.00
2014	12	26	0	\$0.00
2014	12	27	9	\$0.13
2014	12	28	2	\$0.03
2014	12	29	0	\$0.00
2014	12	30	0	\$0.00
2014	12	31	3	\$0.01

[Home <<](#)

year	month	ASMW_REGDN	ASMW_NSPIN	ASMW_RRS	ASMW_REGUP
2013	1	391	1352	2800	448
2013	2	393	1500	2800	460
2013	3	385	1435	2800	446
2013	4	419	1500	2800	501
2013	5	463	1378	2800	489
2013	6	473	1500	2800	525
2013	7	427	1483	2800	487
2013	8	421	1329	2800	483
2013	9	449	1284	2800	480
2013	10	426	1371	2800	462
2013	11	397	1452	2800	452
2013	12	391	1500	2800	405
2014	1	368	1500	2800	427
2014	2	369	1500	2800	446
2014	3	402	1500	2800	442
2014	4	396	1497	2800	471
2014	5	437	1497	2800	465
2014	6	434	1475	2800	469
2014	7	426	1434	2800	439
2014	8	433	1427	2800	462
2014	9	423	1423	2800	472
2014	10	439	1391	2800	446
2014	11	420	1500	2800	448
2014	12	361	1500	2800	393

[Home <<](#)

year	DELIVERY_HOUR	ASMW_REGDN	ASMW_NSPIN	ASMW_RRS	ASMW_REGUP
2013	1	457	1286	2800	576
2013	2	387	1286	2800	346
2013	3	367	1394	2800	303
2013	4	344	1394	2800	316
2013	5	368	1394	2800	378
2013	6	606	1394	2800	502
2013	7	459	1416	2800	719
2013	8	374	1416	2800	436
2013	9	400	1416	2800	478
2013	10	479	1416	2800	488
2013	11	456	1467	2800	521
2013	12	402	1467	2800	508
2013	13	361	1467	2800	452
2013	14	344	1467	2800	460
2013	15	328	1496	2800	397
2013	16	315	1496	2800	390
2013	17	320	1496	2800	428
2013	18	406	1496	2800	501
2013	19	447	1478	2800	453
2013	20	448	1478	2800	462
2013	21	406	1478	2800	429
2013	22	508	1478	2800	465
2013	23	568	1286	2800	653
2013	24	522	1286	2800	611
2014	1	458	1440	2800	524
2014	2	359	1440	2800	354
2014	3	327	1494	2800	318
2014	4	306	1494	2800	312
2014	5	367	1494	2800	366
2014	6	543	1494	2800	527
2014	7	453	1488	2800	747
2014	8	351	1488	2800	435
2014	9	388	1488	2800	461
2014	10	467	1488	2800	463
2014	11	427	1428	2800	497
2014	12	406	1428	2800	472
2014	13	344	1428	2800	432
2014	14	353	1428	2800	436
2014	15	345	1500	2800	372
2014	16	322	1500	2800	358
2014	17	331	1500	2800	373
2014	18	397	1500	2800	462
2014	19	439	1469	2800	445
2014	20	421	1469	2800	455
2014	21	410	1469	2800	388
2014	22	505	1469	2800	456
2014	23	574	1440	2800	555
2014	24	526	1440	2800	547

[Home <<](#)

year	month	MCPC_REGDN	MCPC_NSPIN	MCPC_RRS	MCPC_REGUP
2013	1	\$4.46	\$1.06	\$6.18	\$5.69
2013	2	\$5.40	\$5.55	\$10.92	\$10.79
2013	3	\$5.94	\$3.47	\$7.92	\$8.57
2013	4	\$8.34	\$3.73	\$10.21	\$10.47
2013	5	\$9.17	\$4.95	\$9.66	\$9.90
2013	6	\$4.91	\$4.13	\$9.84	\$10.34
2013	7	\$2.98	\$2.52	\$7.73	\$7.50
2013	8	\$2.69	\$5.68	\$11.37	\$10.18
2013	9	\$2.91	\$3.32	\$9.83	\$9.08
2013	10	\$5.73	\$4.83	\$12.87	\$9.51
2013	11	\$6.35	\$2.51	\$11.00	\$8.60
2013	12	\$5.19	\$1.80	\$9.90	\$8.17
2014	1	\$8.15	\$2.20	\$12.12	\$10.32
2014	2	\$14.28	\$4.28	\$24.28	\$45.03
2014	3	\$20.40	\$4.81	\$26.05	\$26.63
2014	4	\$21.21	\$5.86	\$15.35	\$13.80
2014	5	\$12.45	\$4.82	\$10.71	\$9.04
2014	6	\$7.84	\$3.59	\$11.29	\$9.51
2014	7	\$6.11	\$4.11	\$10.47	\$8.38
2014	8	\$6.12	\$11.79	\$13.67	\$12.10
2014	9	\$6.40	\$6.64	\$8.33	\$8.82
2014	10	\$9.16	\$9.37	\$14.31	\$9.85
2014	11	\$13.31	\$6.95	\$16.01	\$16.26
2014	12	\$6.14	\$2.56	\$8.08	\$9.01

[Home <<](#)

year	month	AScost_REGDN	AScost_NSPIN	AScost_RRS	AScost_REGUP
2013	1	\$0.05	\$0.04	\$0.50	\$0.07
	2	\$0.07	\$0.26	\$0.97	\$0.16
	3	\$0.07	\$0.16	\$0.71	\$0.12
	4	\$0.11	\$0.17	\$0.88	\$0.16
	5	\$0.12	\$0.19	\$0.73	\$0.13
	6	\$0.05	\$0.14	\$0.62	\$0.12
	7	\$0.03	\$0.08	\$0.48	\$0.08
	8	\$0.02	\$0.16	\$0.66	\$0.10
	9	\$0.03	\$0.10	\$0.63	\$0.10
	10	\$0.07	\$0.19	\$1.04	\$0.13
	11	\$0.07	\$0.11	\$0.92	\$0.12
	12	\$0.05	\$0.07	\$0.73	\$0.09
2014	1	\$0.08	\$0.09	\$0.90	\$0.12
	2	\$0.14	\$0.17	\$1.84	\$0.54
	3	\$0.25	\$0.22	\$2.19	\$0.35
	4	\$0.25	\$0.26	\$1.29	\$0.20
	5	\$0.15	\$0.20	\$0.82	\$0.11
	6	\$0.08	\$0.12	\$0.72	\$0.10
	7	\$0.06	\$0.13	\$0.63	\$0.08
	8	\$0.05	\$0.35	\$0.79	\$0.12
	9	\$0.06	\$0.22	\$0.54	\$0.10
	10	\$0.11	\$0.35	\$1.09	\$0.12
	11	\$0.16	\$0.30	\$1.31	\$0.21
	12	\$0.06	\$0.11	\$0.65	\$0.10

[Home <<](#)

<b>year</b>	<b>month</b>	<b>pnm</b>	<b>pnm_accum</b>
2013		\$0	\$0
2013	1	\$1,260	\$1,260
2013	2	\$943	\$2,203
2013	3	\$3,086	\$5,289
2013	4	\$3,772	\$9,061
2013	5	\$1,072	\$10,133
2013	6	\$1,361	\$11,493
2013	7	\$2,105	\$13,598
2013	8	\$2,907	\$16,505
2013	9	\$5,459	\$21,964
2013	10	\$5,400	\$27,363
2013	11	\$2,988	\$30,351
2013	12	\$2,618	\$32,969
2014		\$0	\$0
2014	1	\$8,628	\$8,628
2014	2	\$4,513	\$13,142
2014	3	\$12,232	\$25,374
2014	4	\$4,025	\$29,399
2014	5	\$2,749	\$32,148
2014	6	\$803	\$32,951
2014	7	\$1,288	\$34,239
2014	8	\$2,656	\$36,895
2014	9	\$1,600	\$38,494
2014	10	\$2,975	\$41,469
2014	11	\$4,063	\$45,532
2014	12	\$1,345	\$46,877

[Home <<](#)

year	month	HE_1_4	HE_13_16	HE_17_20	HE_21_24	HE_5_8	HE_9_12
2013	1	579	29	(141)	(51)	503	459
	2	310	(30)	(111)	(109)	386	320
	3	(47)	(373)	214	208	(24)	(326)
	4	(267)	(491)	(83)	(27)	(213)	(377)
	5	(460)	293	763	251	(664)	(503)
	6	(81)	451	658	421	(128)	129
	7	(94)	606	997	460	(346)	47
	8	182	(168)	155	136	89	32
	9	(97)	84	695	252	(268)	(326)
	10	(360)	48	228	(187)	(242)	(312)
	11	(335)	(797)	(515)	(844)	(453)	(755)
	12	(390)	(567)	(248)	(340)	(581)	(461)
2014	1	295	(16)	(64)	148	261	118
	2	(183)	(520)	(851)	(810)	163	(93)
	3	(366)	(107)	(175)	(344)	(174)	(97)
	4	(273)	(155)	30	(177)	(19)	(67)
	5	73	(73)	216	(59)	(128)	(115)
	6	49	1131	1297	641	(455)	222
	7	45	484	559	85	39	388
	8	(117)	(256)	(67)	(236)	(118)	(201)
	9	(213)	350	821	(24)	(148)	(36)
	10	(19)	(21)	(65)	64	45	374
	11	56	(318)	(269)	(301)	(50)	(208)
	12	21	(616)	(633)	(334)	299	(143)

[Home <<](#)

year	month	HE_1_4	HE_13_16	HE_17_20	HE_21_24	HE_5_8	HE_9_12
2013	1	3660	2849	2659	3471	3733	3174
	2	4586	3937	3846	4547	3968	3812
	3	5504	3917	4242	5172	5149	4551
	4	5876	3826	4385	5466	5387	4449
	5	5663	4455	4843	5279	5237	4416
	6	5040	3504	4155	4666	4278	3940
	7	3573	2122	2812	3143	3053	2242
	8	3440	1507	2115	3079	2970	1898
	9	2898	2140	2453	2861	2273	1843
	10	4514	3046	3216	4467	3921	3481
	11	4561	3073	3317	4539	4146	3410
	12	3661	2845	2876	3802	3355	3102
2014	1	5808	4127	4036	5391	5211	4131
	2	4238	3120	2824	3762	3941	3502
	3	5359	3742	4014	4962	5013	4267
	4	5819	4467	4949	5139	4996	4593
	5	5275	3564	4320	4769	4371	3733
	6	6030	4599	5489	6014	5549	5127
	7	4216	2459	3177	3787	3461	2457
	8	3869	2003	2779	3629	3436	2544
	9	3344	2350	2668	3280	2796	2377
	10	4810	2418	2839	4457	4317	3166
	11	5601	4442	4404	5746	5689	4922
	12	4654	3175	3356	4449	4254	3607

[Home <<](#)



category	year	item	rankvar	rank	JAN	FEB	MAR	APR	MAY	JUN	JUL	AUG	SEP	OCT	NOV	DEC
FREQ EXIST	2014	LON HI SMITH1 1 (LON HILL-SMITH)	5871	1	406	289	117	0	419	1260	825	889	145	154	791	576
FREQ EXIST	2014	BRUNI 69 1 (BRUNI-BRUNI)	5363	2	827	394	276	404	935	740	662	654	34	35	175	227
FREQ EXIST	2014	ODNTH SD3 1 (ODNTH-ODNTH)	3512	3	0	0	0	3512	0	0	0	0	0	0	0	0
FREQ EXIST	2014	POS SHAN 1 (SHANNON-POSTOKSW)	3478	4	0	0	0	0	0	0	0	0	0	398	2158	922
FREQ EXIST	2014	GILA HIWAY 2 1 (GILA-HIWAY 9)	2965	5	107	87	28	460	167	219	612	484	403	99	291	8
FREQ EXIST	2014	JEWET-SNG (JEWET-SNG)	2871	6	0	0	0	6	388	302	623	1443	88	21	0	0
FREQ EXIST	2014	HEIGHTTN XFMRs (HEIGHTTN-HEIGHTTN)	2600	7	0	0	0	78	0	0	0	0	1055	1333	134	0
FREQ EXIST	2014	SNG-ZEN (SNG-ZEN)	1989	8	0	0	0	0	0	726	587	376	276	18	6	0
FREQ EXIST	2014	COLETO VICTOR2 1 (COLETO-VICTORIA)	1899	9	55	66	308	271	1046	52	37	41	5	15	3	0
FREQ EXIST	2014	6146 A (MDLNE-BUFFALO)	1824	10	0	0	0	0	0	0	1088	735	0	0	1	0
TOP10 RENT	2014	HEIGHTTN XFMRs (HEIGHTTN-HEIGHTTN)	73.609794	1	0.000000	0.000000	0.000000	2.904283	0.000000	0.000000	0.000000	0.000000	30.045302	37.735236	2.924973	0.000000
TOP10 RENT	2014	LYTTON S AT1H (LYTTON S-LYTTON S)	56.314426	2	23.271535	26.967663	6.075227	0.000000	0.000000	0.000000	0.000000	0.000000	0.000000	0.000000	0.000000	0.000000
TOP10 RENT	2014	6146 A (MDLNE-BUFFALO)	36.804499	3	0.000000	0.000000	0.000000	0.000000	0.000000	0.000000	22.250776	14.552285	0.000000	0.000000	0.001438	0.000000
TOP10 RENT	2014	HARLNS OLEAND1 1 (HARLNSW-OLEANDER)	29.032834	4	0.000000	0.908955	0.000000	0.000000	0.000000	0.000000	0.000000	0.000000	6.412410	21.711468	0.000000	0.000000
TOP10 RENT	2014	RIOHND ERIOHND 1 (RIOHONDO-MV RIOHO)	25.105861	5	0.000000	0.000000	0.000000	0.000000	0.000000	0.000000	0.939201	0.255494	0.000000	23.911165	0.000000	0.000000
TOP10 RENT	2014	ODNTH SD3 1 (ODNTH-ODNTH)	23.839478	6	0.000000	0.000000	0.000000	23.839478	0.000000	0.000000	0.000000	0.000000	0.000000	0.000000	0.000000	0.000000
TOP10 RENT	2014	6475 E (MOSSW-WOVER)	19.893286	7	0.000000	0.000000	0.000000	0.000000	0.000000	0.000000	0.000000	0.000000	0.000000	19.893286	0.000000	0.000000
TOP10 RENT	2014	LON HI SMITH1 1 (LON HILL-SMITH)	18.611531	8	2.246176	2.022174	0.373279	0.000000	1.741698	2.665299	2.049363	2.565807	0.293353	0.281938	2.927547	1.444896
TOP10 RENT	2014	BETHK 66 A (HK-BET)	17.539326	9	0.000000	0.000000	0.000000	7.873144	0.000000	0.000000	0.000000	3.103561	2.506015	4.056607	0.000000	0.000000
TOP10 RENT	2014	VALIMP (VALIMP)	13.106348	10	0.000000	0.030274	12.797531	0.000000	0.000000	0.000000	0.000000	0.000000	0.000000	0.278542	0.000000	0.000000

[Home <<](#)

category	year	item	rankvar	rank	JAN	FEB	MAR	APR	MAY	JUN	JUL	AUG	SEP	OCT	NOV	DEC
FREQ EXIST	2014	BRUNI 69 1 (BRUNI-BRUNI)	4057	1	341	328	480	499	561	499	465	319	96	80	170	219
FREQ EXIST	2014	GILA HIWAY 2 1 (GILA-HIWAY 9)	3434	2	482	15	26	580	489	162	325	364	262	326	331	72
FREQ EXIST	2014	ALO WAR 1 (WARBURTN-ALOES)	2775	3	368	215	357	290	303	219	110	139	160	87	294	233
FREQ EXIST	2014	MUNDAY MUNDAY1 1 (MUNDAYST-MUNDAYR2)	2497	4	139	212	178	96	170	317	629	206	140	105	78	227
FREQ EXIST	2014	LA PAL VCAVAZ1 1 (LA PALMA-VCAVAZOS)	1700	5	172	118	124	233	128	90	33	187	214	72	210	119
FREQ EXIST	2014	ROTN WOLFGA1 1 (WOLFGANG-ROTN)	1638	6	349	256	330	140	157	50	154	36	8	10	111	37
FREQ EXIST	2014	HIC LOCU 1 (HICKRY D-LOCUST D)	1622	7	332	234	284	101	82	149	64	76	148	100	45	7
FREQ EXIST	2014	6216 A (SHRNE-BCKSW)	1522	8	114	214	146	20	49	97	264	278	211	94	4	31
FREQ EXIST	2014	COLETO-VICTORIA (COLETO-VICTORIA)	1514	9	24	39	167	133	619	295	56	126	0	37	8	10
FREQ EXIST	2014	WHTNY XFMR5 (WHTNY-WHTNY)	1431	10	191	174	120	249	171	61	29	29	4	32	150	221
TOP10 RENT	2014	ODNTH SD3 1 (ODNTH-ODNTH)	31.550004	1	0.000000	0.000000	0.831313	30.718691	0.000000	0.000000	0.000000	0.000000	0.000000	0.000000	0.000000	0.000000
TOP10 RENT	2014	HEIGHTTN XFMR5 (HEIGHTTN-HEIGHTTN)	31.435463	2	0.000000	0.000000	0.000000	0.091677	0.000000	0.000000	0.000000	0.000000	7.227386	17.807048	6.304977	0.004375
TOP10 RENT	2014	RIOHND ERIOHND 1 (RIOHONDO-MV RIOHO)	22.385795	3	0.000000	0.002481	0.000000	0.000000	0.008963	0.000000	0.001705	0.000000	0.001038	22.370451	0.001157	0.000000
TOP10 RENT	2014	6146 A (MDLNE-BUFFALO)	18.761319	4	0.000000	0.000000	0.000000	0.000000	0.000000	0.000000	7.048387	10.611197	0.243173	0.600517	0.258045	0.000000
TOP10 RENT	2014	LYTTON S AT1 (LYTTON S-LYTTON S)	18.531387	5	7.456855	8.767296	2.138468	0.030578	0.000000	0.000000	0.000000	0.028062	0.039846	0.070281	0.000000	0.000000
TOP10 RENT	2014	6475 E (MOSSW-WOVER)	16.397850	6	0.000000	0.000000	0.000000	0.000000	0.000000	0.000000	0.000000	0.000000	0.000000	16.397850	0.000000	0.000000
TOP10 RENT	2014	HARLNS OLEAND1 1 (HARLNSW-OLEANDER)	13.276167	7	0.000000	0.093271	0.000000	0.000000	0.093578	0.000000	0.000000	0.000000	6.473352	6.615965	0.000000	0.000000
TOP10 RENT	2014	MUNDAY MUNDAY1 1 (MUNDAYST-MUNDAYR2)	11.952405	8	0.289700	0.638879	0.389343	0.213272	0.624714	2.704799	5.354646	0.544895	0.088045	0.240570	0.453789	0.409752
TOP10 RENT	2014	LON HI SMITH1 1 (LON HILL-SMITH)	11.063434	9	0.954378	1.212865	0.035975	0.000000	0.661205	3.006217	2.053440	1.464533	0.126890	0.008146	1.301671	0.238114
TOP10 RENT	2014	FALFUR 69A1 (FALFUR-FALFUR)	10.584524	10	4.339362	5.701679	0.000000	0.000000	0.269473	0.025502	0.008605	0.028003	0.032297	0.003373	0.002862	0.173366

[Home <<](#)

fr_option	year	pair	total_value	rank	JAN	FEB	MAR	APR	MAY	JUN	JUL	AUG	SEP	OCT	NOV	DEC
N	2014	HB WEST-LZ WEST	26.926348	1	0.356210	0.572159	1.616384	2.253396	3.627190	3.658377	3.790575	3.372122	1.989200	2.196491	2.352478	1.141767
N	2014	HB NORTH-HB HOUSTON	10.954962	2	0.000000	0.000000	0.521985	1.468895	1.854310	1.362082	0.307816	0.699889	1.641923	2.618482	0.479579	0.000000
N	2014	HB SOUTH-LZ SOUTH	10.227558	3	0.459282	0.495487	0.560351	1.181561	0.729006	0.924097	1.098566	0.952909	0.883056	0.814674	0.872238	1.256333
N	2014	HB NORTH-LZ NORTH	6.202343	4	0.345118	0.275947	0.427177	0.516576	0.357522	0.656301	0.906613	0.699087	0.306336	0.420011	0.467425	0.824232
N	2014	HB HOUSTON-LZ HOUSTON	4.211455	5	0.075808	0.059027	0.076783	0.232014	0.219083	0.504825	0.599827	0.538639	0.451490	0.528794	0.415824	0.509339
N	2014	HB NORTH-HB SOUTH	3.379002	6	0.252353	0.299889	0.343052	0.595579	0.470434	0.126591	0.000000	0.108302	0.236069	0.698954	0.224316	0.023462
N	2014	OGSES 1-HB NORTH	0.953289	7	0.044729	0.040830	0.094636	0.133280	0.073430	0.059818	0.105460	0.044150	0.015654	0.154989	0.093128	0.093184
N	2014	OGSES 2-HB NORTH	0.951741	8	0.042783	0.041329	0.097545	0.128912	0.072228	0.059191	0.117062	0.043072	0.015420	0.152438	0.091095	0.090666
N	2014	HB NORTH-HB WEST	0.732635	9	0.026463	0.031287	0.000000	0.000000	0.000000	0.244053	0.364277	0.066553	0.000000	0.000000	0.000000	0.000000
N	2014	LGE LGE GT1-HB SOUTH	0.716244	10	0.029703	0.124292	0.091568	0.096763	0.077891	0.120003	0.064613	0.027321	0.035684	0.000000	0.003035	0.045372
Y	2014	HB WEST-LZ WEST	14.439692	1	0.545407	0.379320	0.881417	1.085748	1.924857	1.730460	2.973305	2.118457	0.844706	0.294591	1.200203	0.461223
Y	2014	HB SOUTH-LZ SOUTH	3.753762	2	0.230849	0.064564	0.064854	0.315118	0.597840	0.564249	0.279535	0.392403	0.238934	0.270930	0.366363	0.368124
Y	2014	CALAVER JKS2-LZ CPS	2.878552	3	0.098570	0.030566	0.070445	0.143907	0.329529	0.478281	0.535627	0.298760	0.349842	0.254554	0.096585	0.191886
Y	2014	HB NORTH-LZ NORTH	2.665709	4	0.271439	0.169779	0.133119	0.138786	0.154106	0.418547	0.358405	0.280776	0.116927	0.082840	0.071652	0.469334
Y	2014	HB NORTH-HB HOUSTON	2.053298	5	0.189598	0.037496	0.663368	0.089800	0.092397	0.123077	0.320843	0.145403	0.196637	0.068667	0.126013	0.000000
Y	2014	RIONOG ST1-HB SOUTH	1.379861	6	0.163723	0.119491	0.122638	0.000000	0.160670	0.270246	0.003626	0.130810	0.114351	0.134558	0.017383	0.142366
Y	2014	STP STP G2-LZ CPS	1.374026	7	0.056552	0.032430	0.136007	0.076803	0.176896	0.195201	0.158728	0.054659	0.150821	0.186347	0.149581	0.000000
Y	2014	HB HOUSTON-LZ HOUSTON	1.371979	8	0.040375	0.021879	0.079005	0.069999	0.107972	0.161812	0.098692	0.229179	0.164338	0.110220	0.157766	0.130742
Y	2014	STP STP G1-LZ CPS	1.173403	9	0.057112	0.034484	0.069100	0.009072	0.088322	0.197505	0.157408	0.094591	0.177817	0.142731	0.145262	0.000000
Y	2014	HB NORTH-HB WEST	1.088854	10	0.049876	0.037556	0.074150	0.061814	0.012641	0.136662	0.179608	0.277873	0.068506	0.006142	0.088691	0.095336

[Home <<](#)