



---

# ERCOT Monthly Operational Overview (**August 2014**)

ERCOT Public  
September 15, 2014

---

# **Grid Planning & Operations**

---

# Summary - August 2014

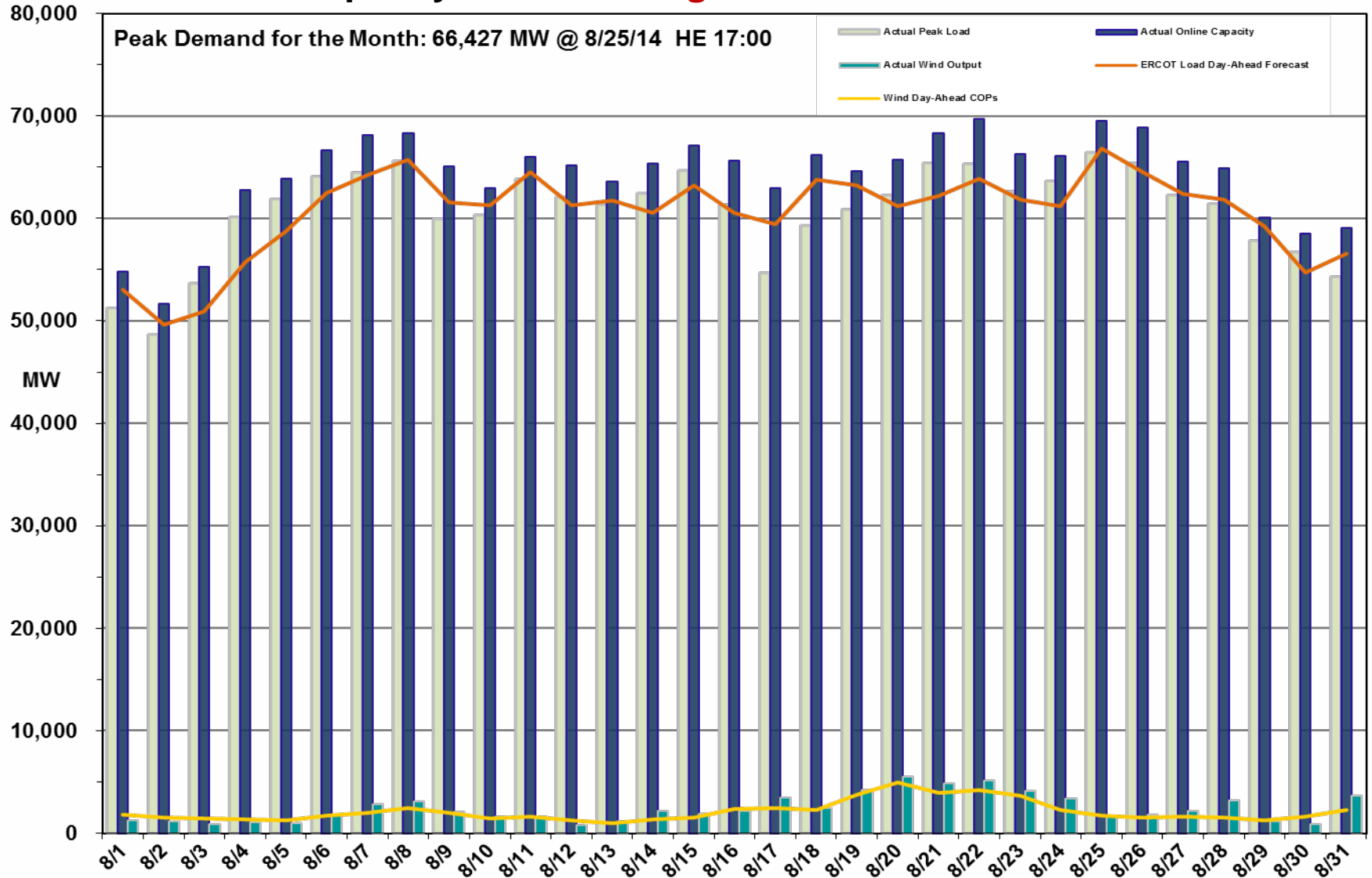
## August 2014 Operations

- The peak demand of 66,427 MW on August 25<sup>th</sup> was less than the mid-term forecast peak of 66,849 MW as well as the August 2013 actual peak demand of 67,245 MW. The instantaneous load on August 25<sup>th</sup> was 66,622 MW.
- Day-ahead load forecast error for August was 2.35%
- ERCOT issued 5 notifications
  - Two OCNs due to projected reserve capacity shortages.
  - A single OCN for an EMMS site failover.
  - A single advisory due to ERCOT's Voltage Security Assessment Tool (VSAT) being unavailable.
  - A single advisory for the deadline for DAM submissions being extended.

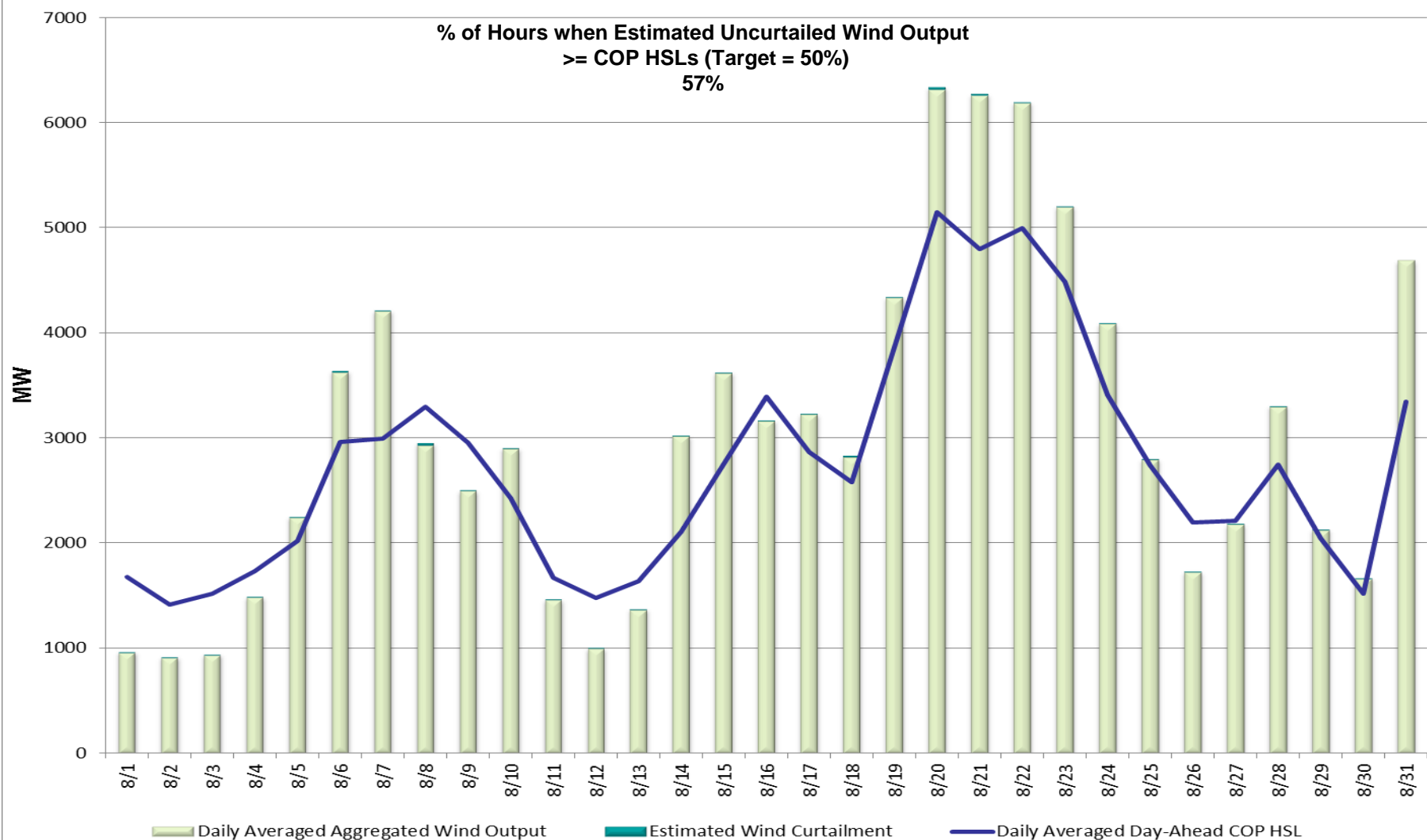
## Planning Activities

- 230 active generation interconnection requests totaling over 62,800 MW, including 25,300 MW of wind generation as of August 31, 2014. One less request and 200 less MW from July 31, 2014.
- 11,509 MW wind capacity in commercial operations on August 31, 2014.

# Daily Peak Demand: Hourly Average Actual vs. Forecast, Wind Day-Ahead COPs & On-line Capacity at Peak – Aug. 2014

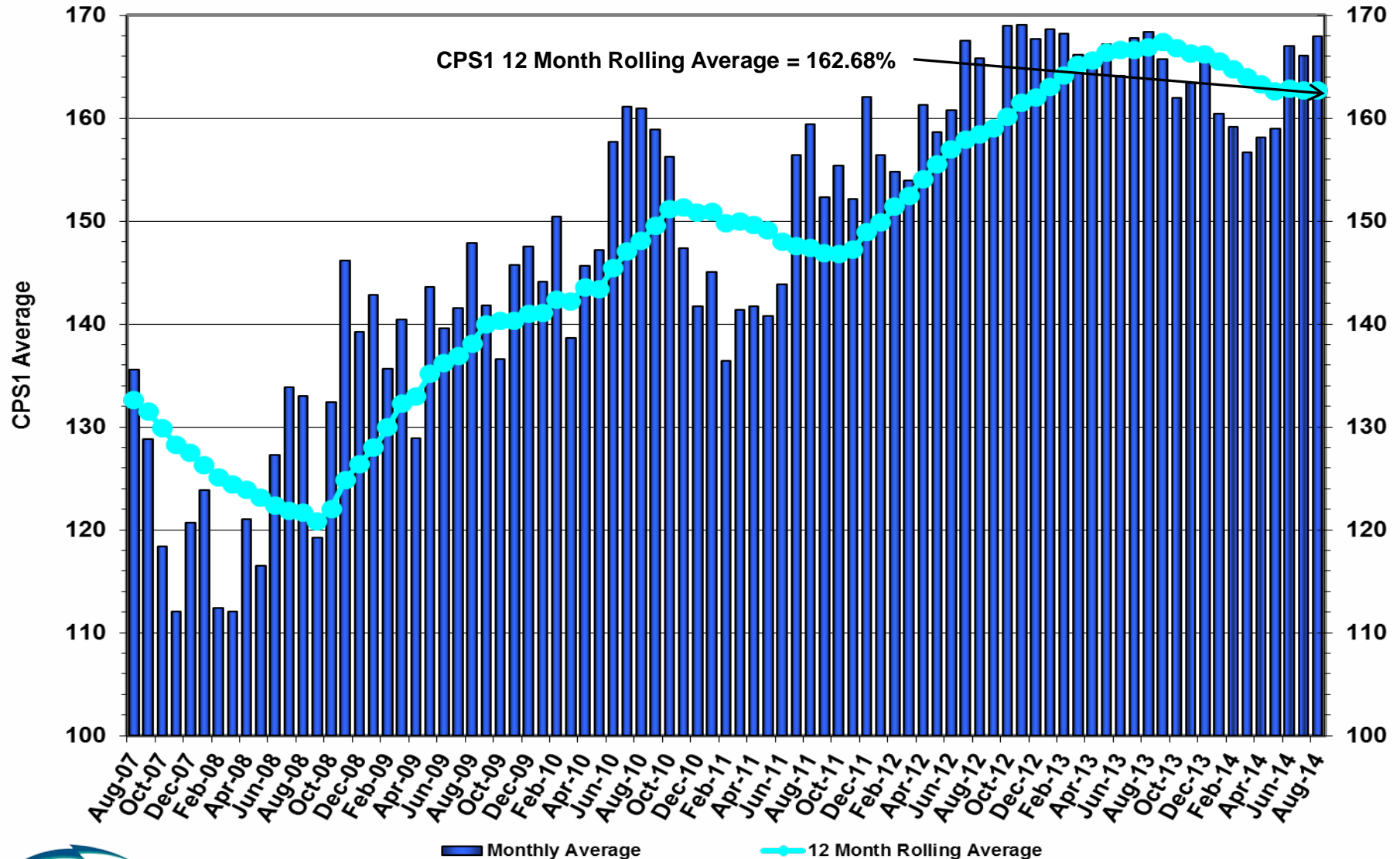


# Actual Wind Output plus Curtailments vs. Wind Day-Ahead COPs for All Hours – Aug. 2014

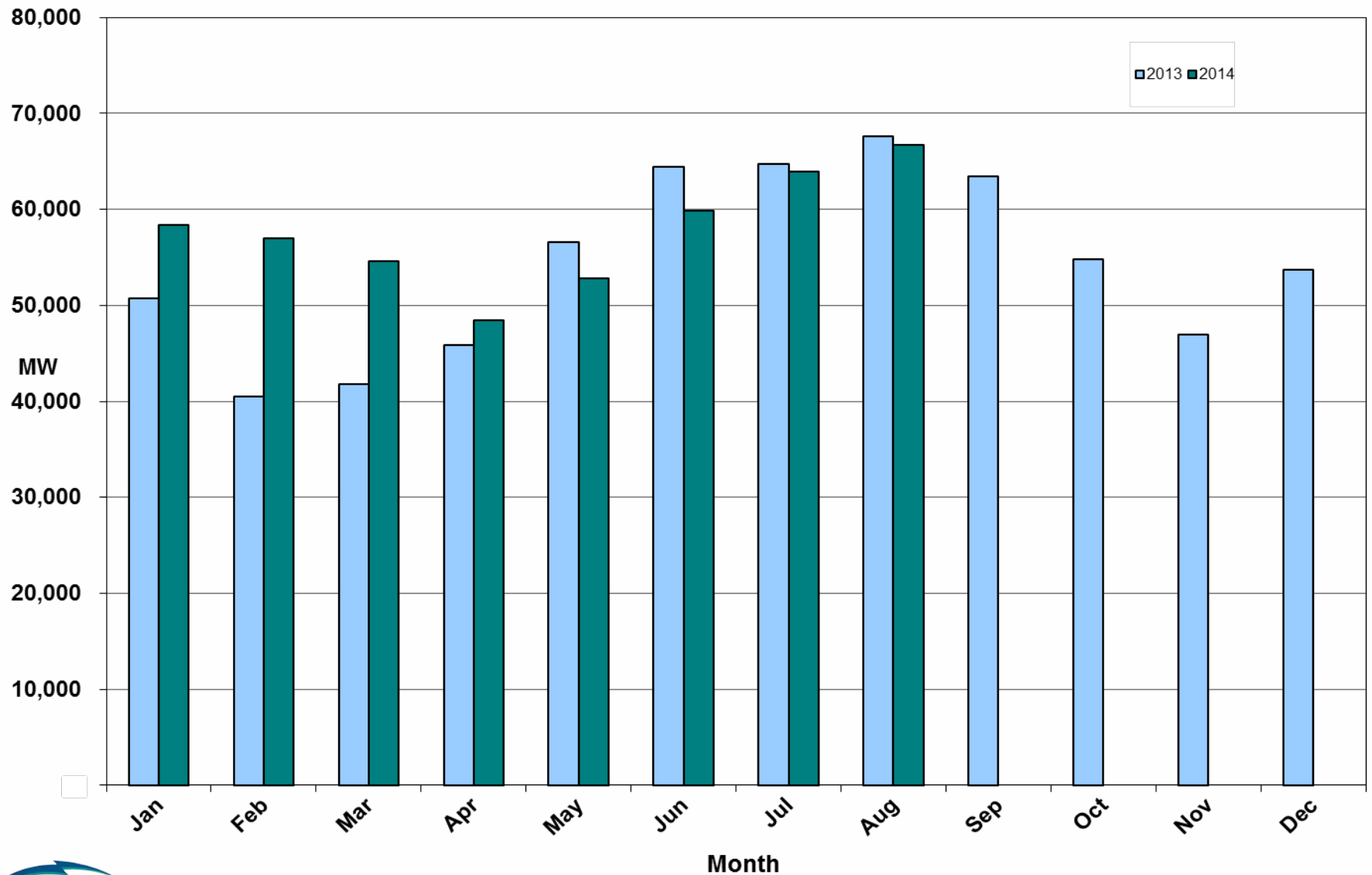


**Note: QSEs must use the AWST 50% probability of exceedance forecast as the HSL in their COPs**

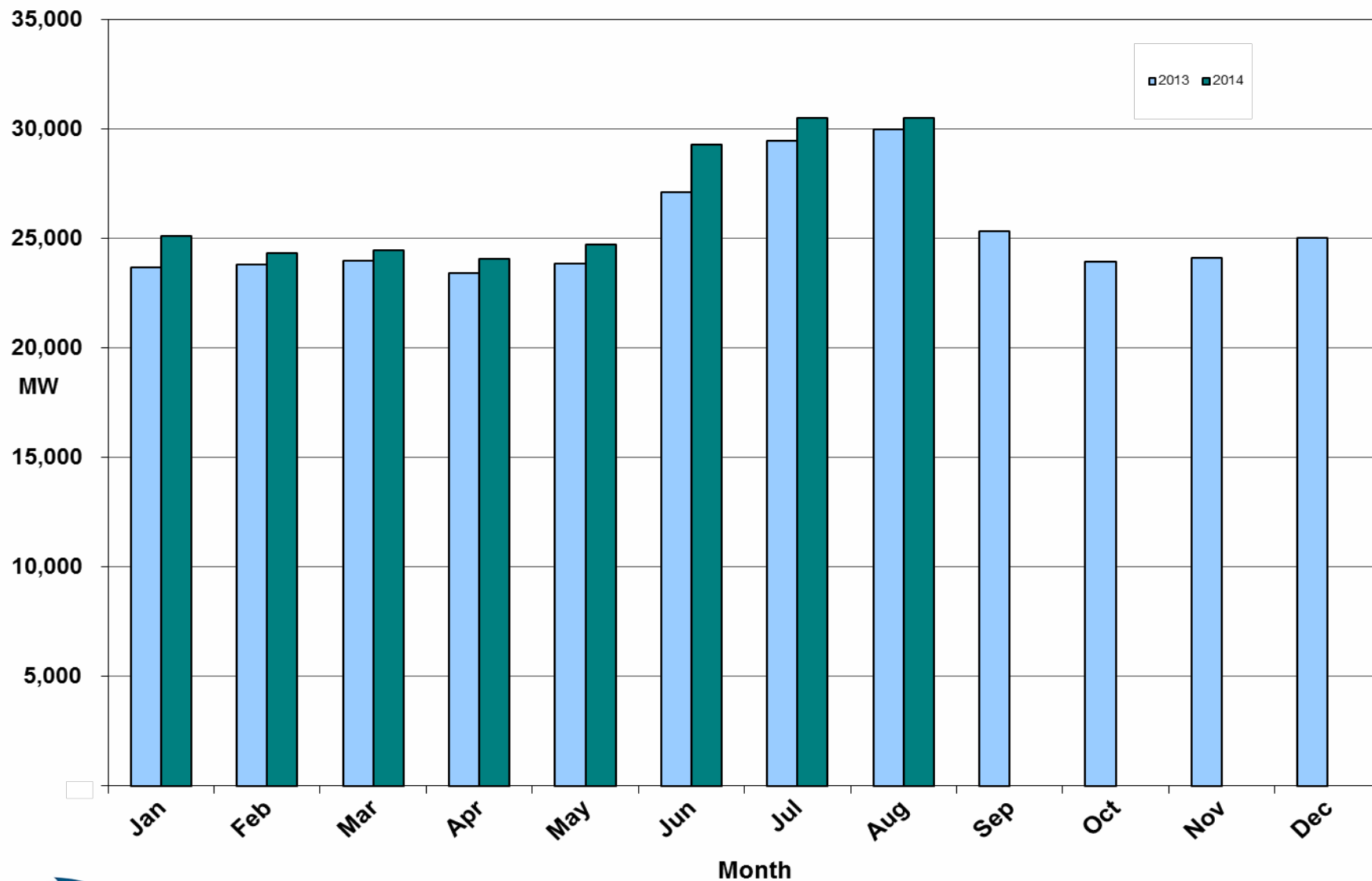
# ERCOT's CPS1 Monthly Performance – Aug. 2014



# Monthly Peak Actual Demand – Aug. 2014



# Monthly Minimum Actual Demand – Aug. 2014



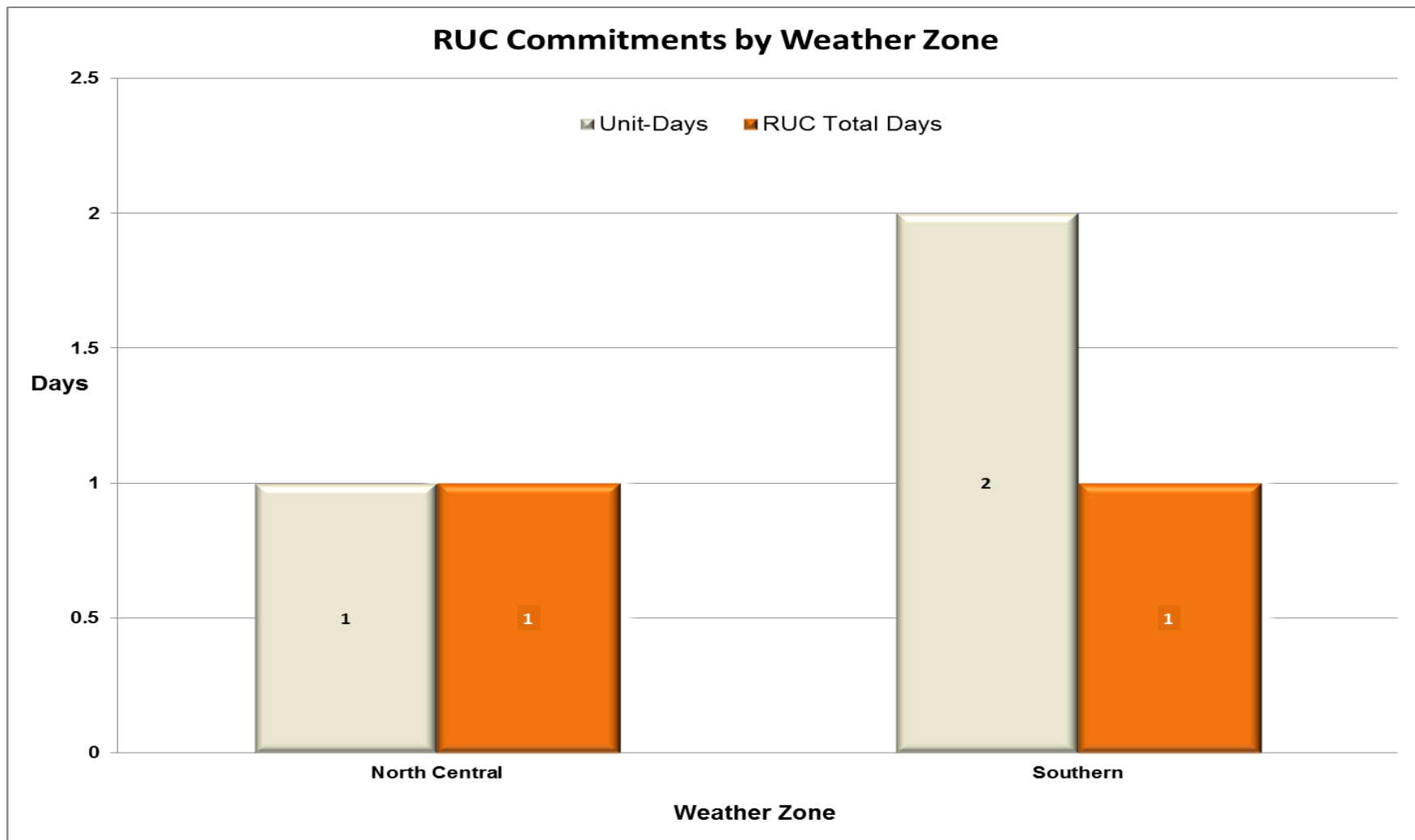


# Day-Ahead Load Forecast Performance – Aug. 2014

**Mean Absolute Percent Error (MAPE) for ERCOT Mid-Term Load Forecast (MTLF)  
Run at 14:00 Day Ahead**

	2011 MAPE	2012 MAPE	2013 MAPE	2014 MAPE	August 2014 MAPE	
<b>Average Annual MAPE</b>	2.83	3.02	2.86	3.03	2.35	
<b>Lowest Monthly MAPE</b>	1.63	2.51	2.07	2.35	<b>Lowest Daily MAPE</b>	0.78 Aug – 27
<b>Highest Monthly MAPE</b>	3.55	3.49	3.50	3.70	<b>Highest Daily MAPE</b>	5.60 Aug – 17

## Reliability Unit Commitment (RUC) Capacity by Weather Zone – Aug. 2014



# Generic Transmission Limits (GTLs) – Aug. 2014

GTLs	Aug 13 Days GTLs	Jun 14 Days GTLs	Jul 14 Days GTLs	Aug 14 Days GTLs	Last 12 Months Total Days (Sep13 – Aug14)
North – Houston	0	0	0	0	0
West – North	0	0	0	0	12
Valley Import	0	0	0	0	7
SOP110	0	0	0	0	10

**GTL:** A transmission flow limit more constraining than a Transmission Element's normal limit established to constrain flow between geographic areas of the ERCOT Transmission System that is used to enforce stability and voltage constraints that cannot be modeled directly in ERCOT's transmission security analysis applications.

**Note:** This table lists how many times a constraint has been activated to avoid exceeding a GTL limit, it does not imply an exceedance of the GTL occurred.

# Advisories and Watches – Aug. 2014

---

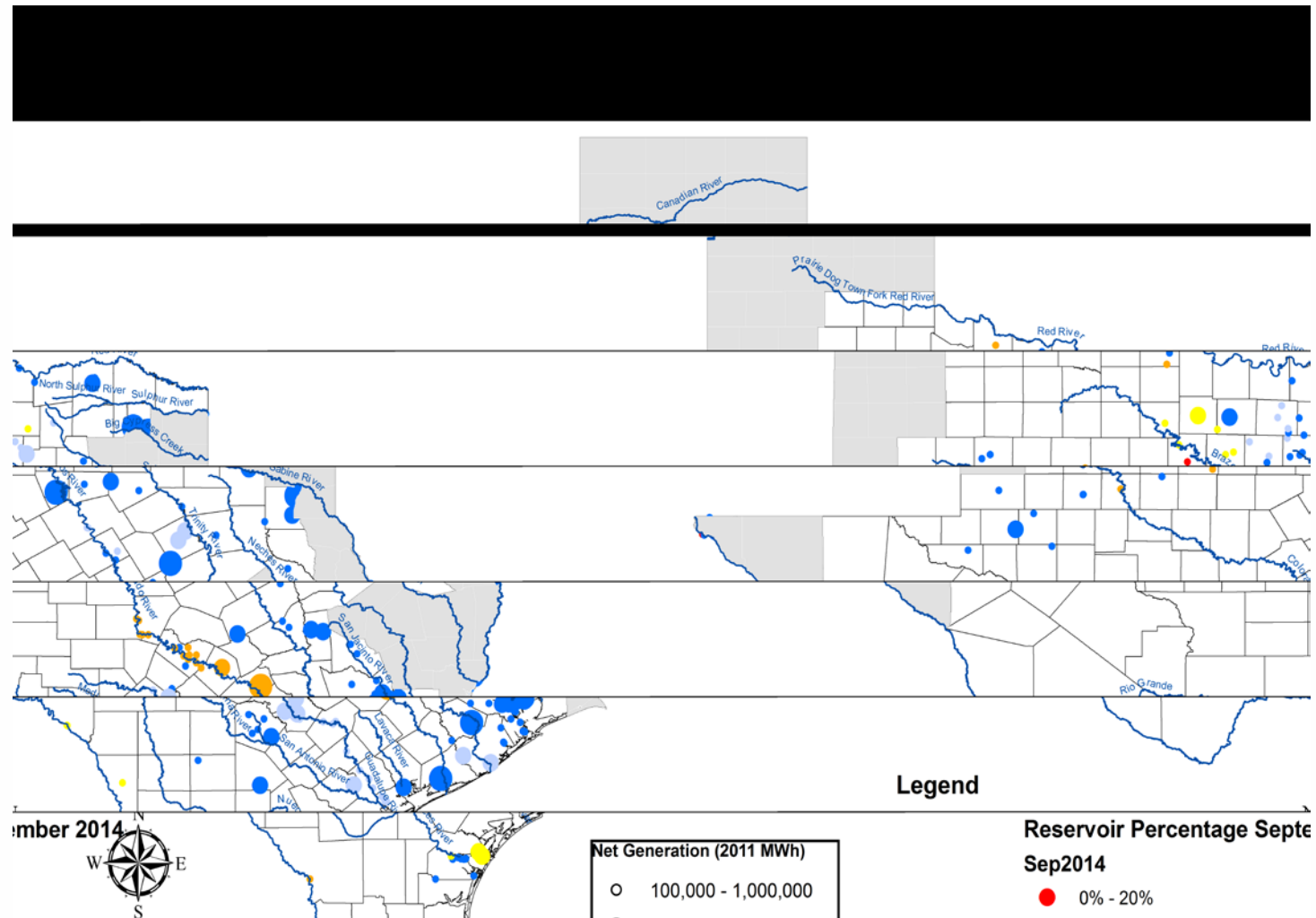
- Two OCNs due to projected reserve capacity shortages.
  - Issued on 08/05 and 08/07
- A single OCN for an EMMS site failover.
  - Issued once on 08/17
- A single advisory due to ERCOT's Voltage Security Assessment Tool (VSAT) being unavailable.
  - Issued once on 08/17
- A single advisory for the deadline for DAM submissions being extended.
  - Issued once 08/18

# Significant Events – August 2014

---

- No significant events to report

# Lake Levels Update – September 1, 2014

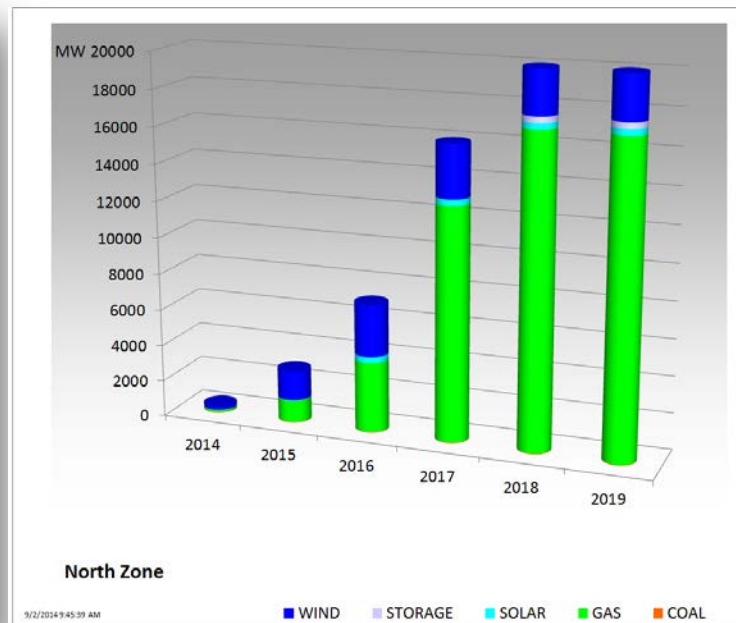
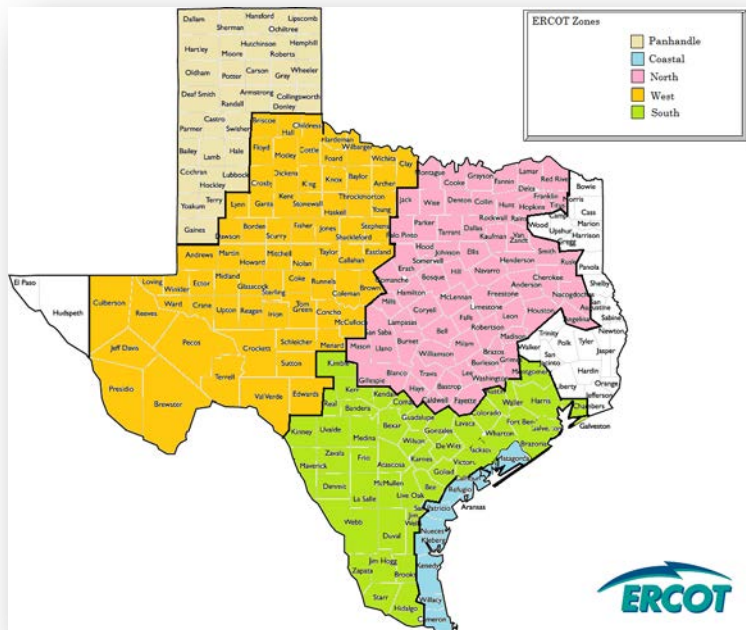


# Planning Summary – August 2014

---

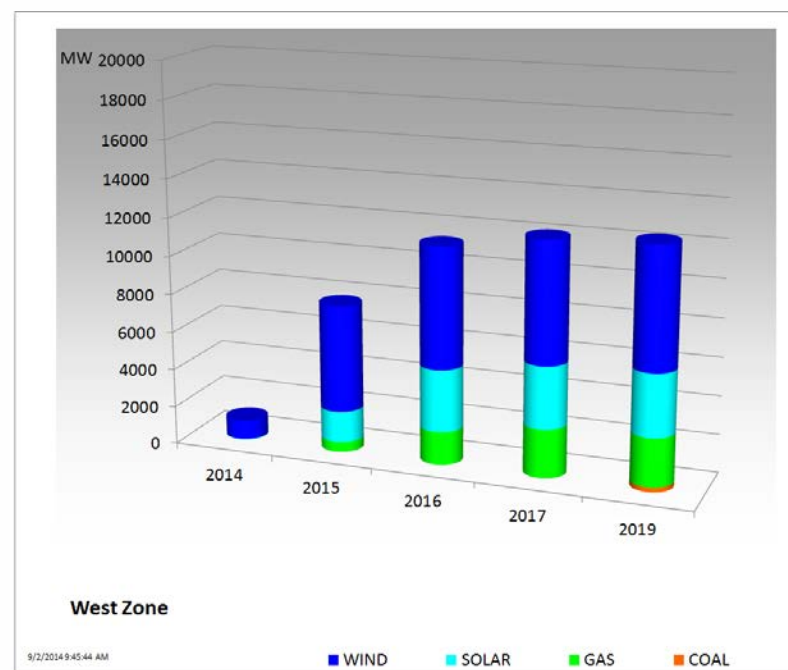
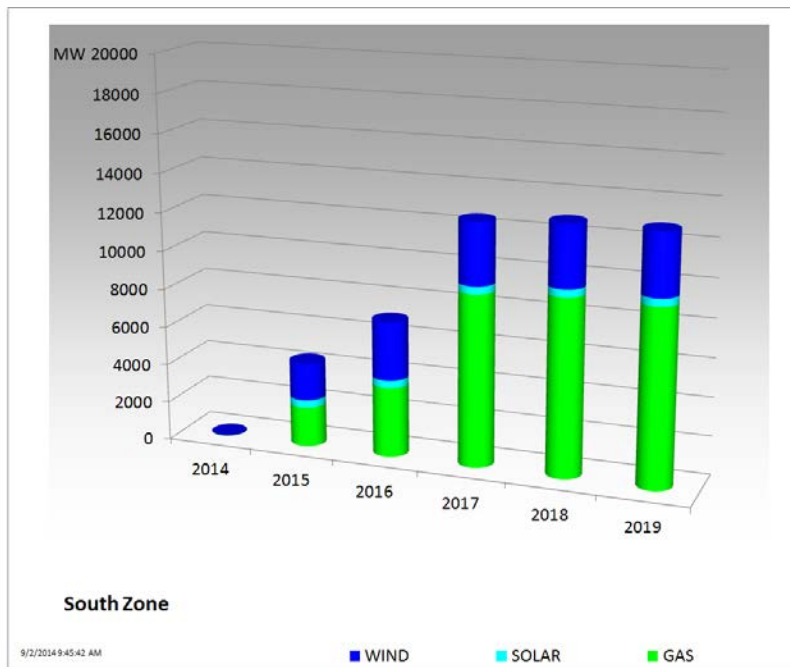
- ERCOT is currently tracking 230 active generation interconnection requests totaling over 62,800 MW. This includes over 25,300 MW of wind generation.
- ERCOT is currently reviewing proposed transmission improvements with a total cost of \$393.6 Million.
- Transmission Projects endorsed in 2014 total \$754.4 Million.
- All projects (in engineering, routing, licensing and construction) total approximately \$4.98 Billion.
- Transmission Projects energized in 2014 total about \$438.2 Million.

# Cumulative Installed MW Capacity of Interconnection Requests by Zone – Aug. 2014

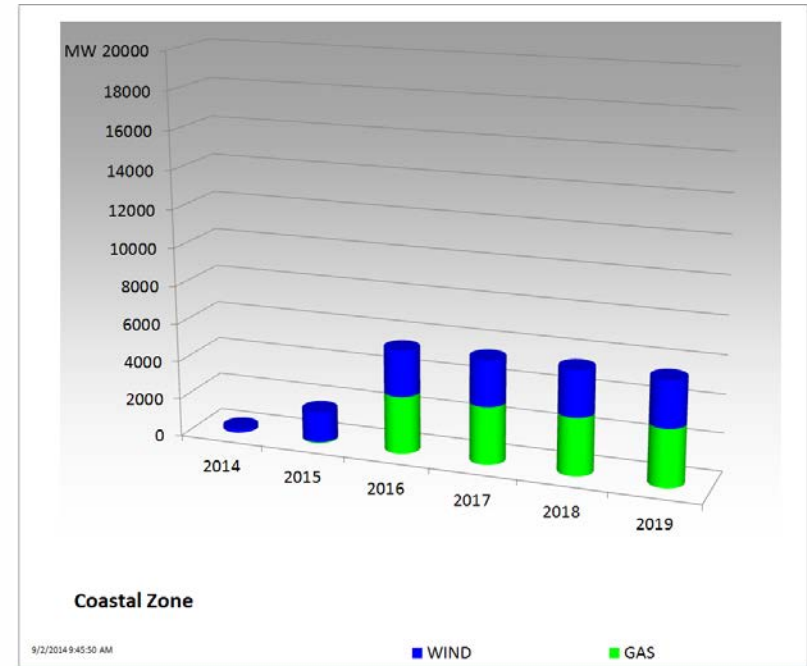
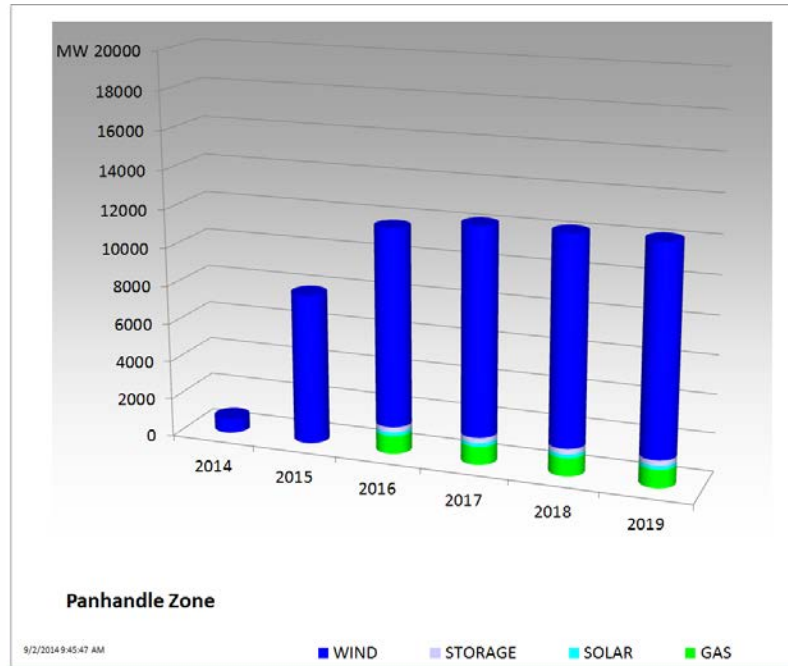




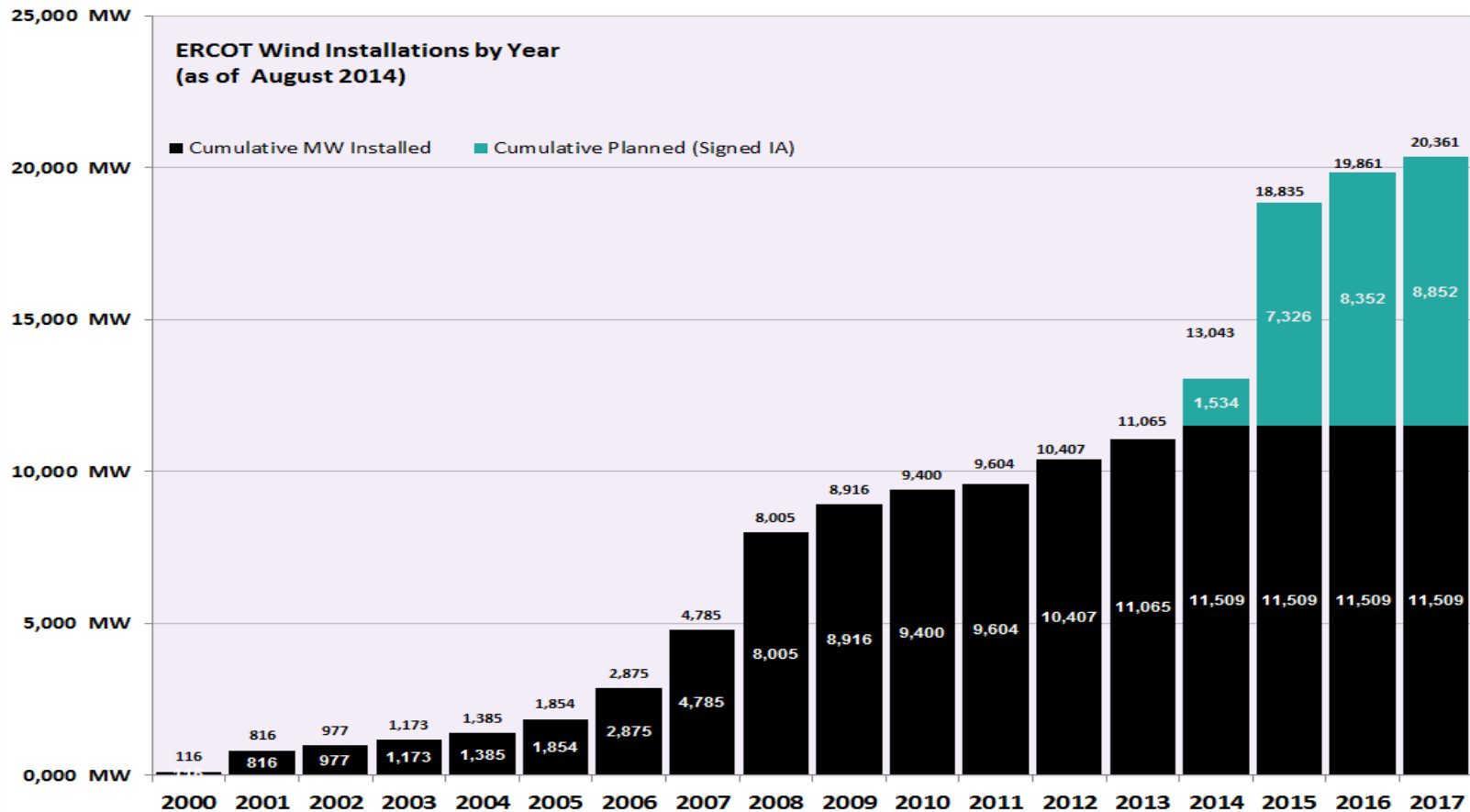
# Cumulative Installed MW Capacity of Interconnection Requests by Zone – Aug. 2014



# Cumulative Installed MW Capacity of Interconnection Requests by Zone – Aug. 2014



# Wind Generation – Aug. 2014



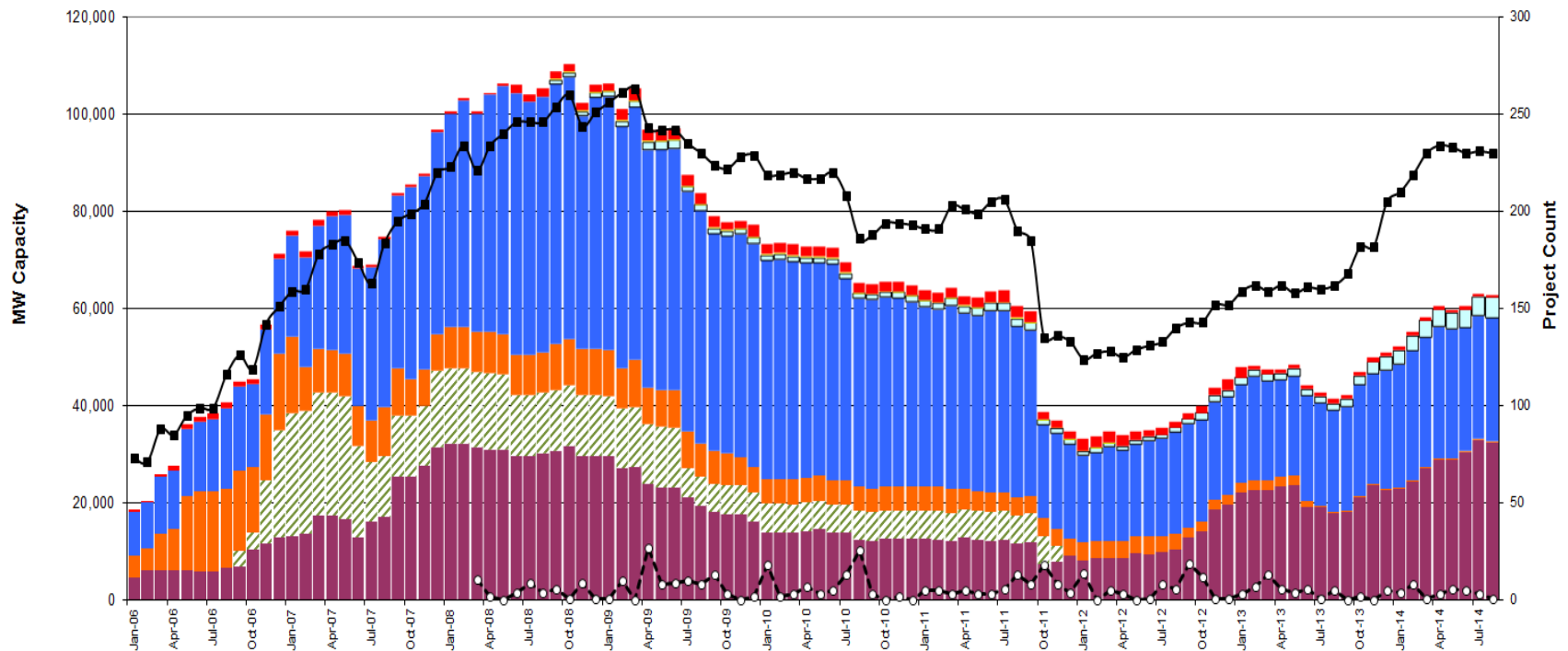
The data presented is based upon the latest registration data provided to ERCOT by the resource owners and can change without notice. For example, a difference in installed capacity from one GIS Report to the next reflects updated turbine capacity ratings reported in submissions of revised Resource Asset Registration Forms (RARFs). Planned resources are shown in the calendar of the projected completion date and any delays in the projected completion dates will be reflected as that information is received by ERCOT.

# Generation Interconnection Activity by Fuel – Aug. 2014

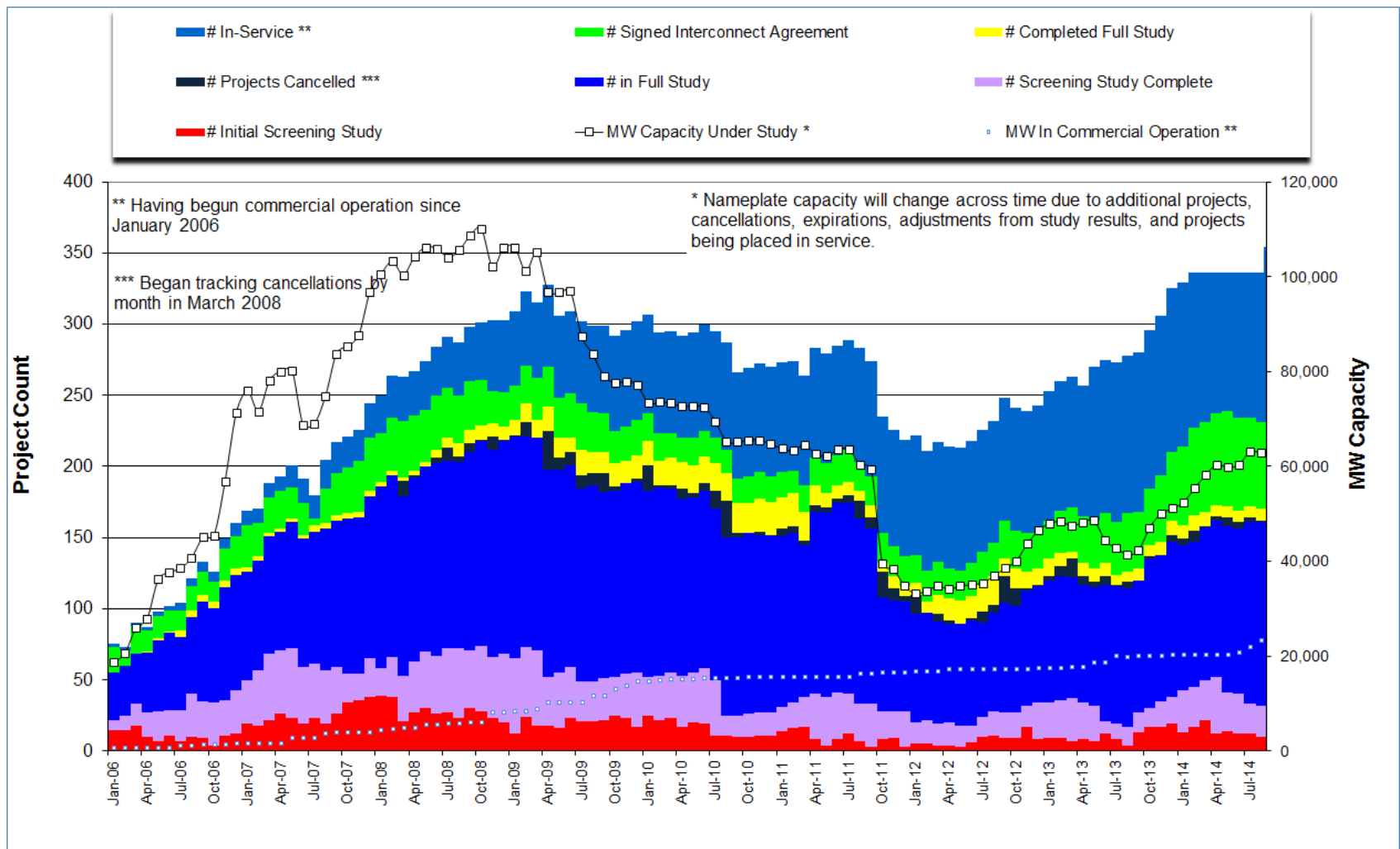
MW Natural Gas      MW Nuclear      MW Coal      MW Wind      MW Solar \*  
 MW Biomass \*      MW Other      Total # of Projects      # of Cancelled Projects

\*Prior to September 2008, Category "Other" included "Solar" and "Biomass"

Projects in all phases of interconnection study are reflected in this graph  
Project cancellation tracking by month began in March 2008



# Generation Interconnection Activity by Project Phase – Aug. 2014

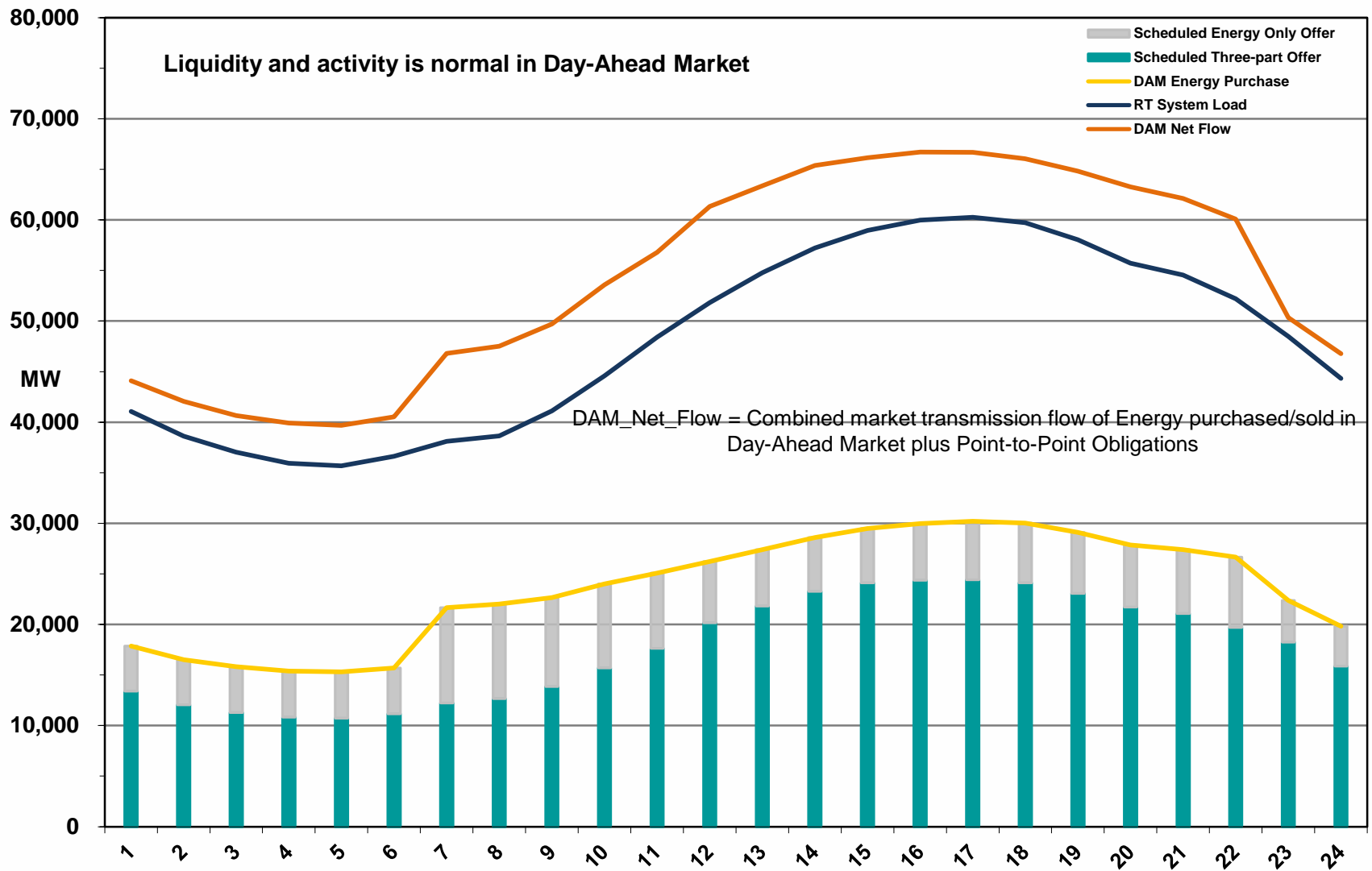


---

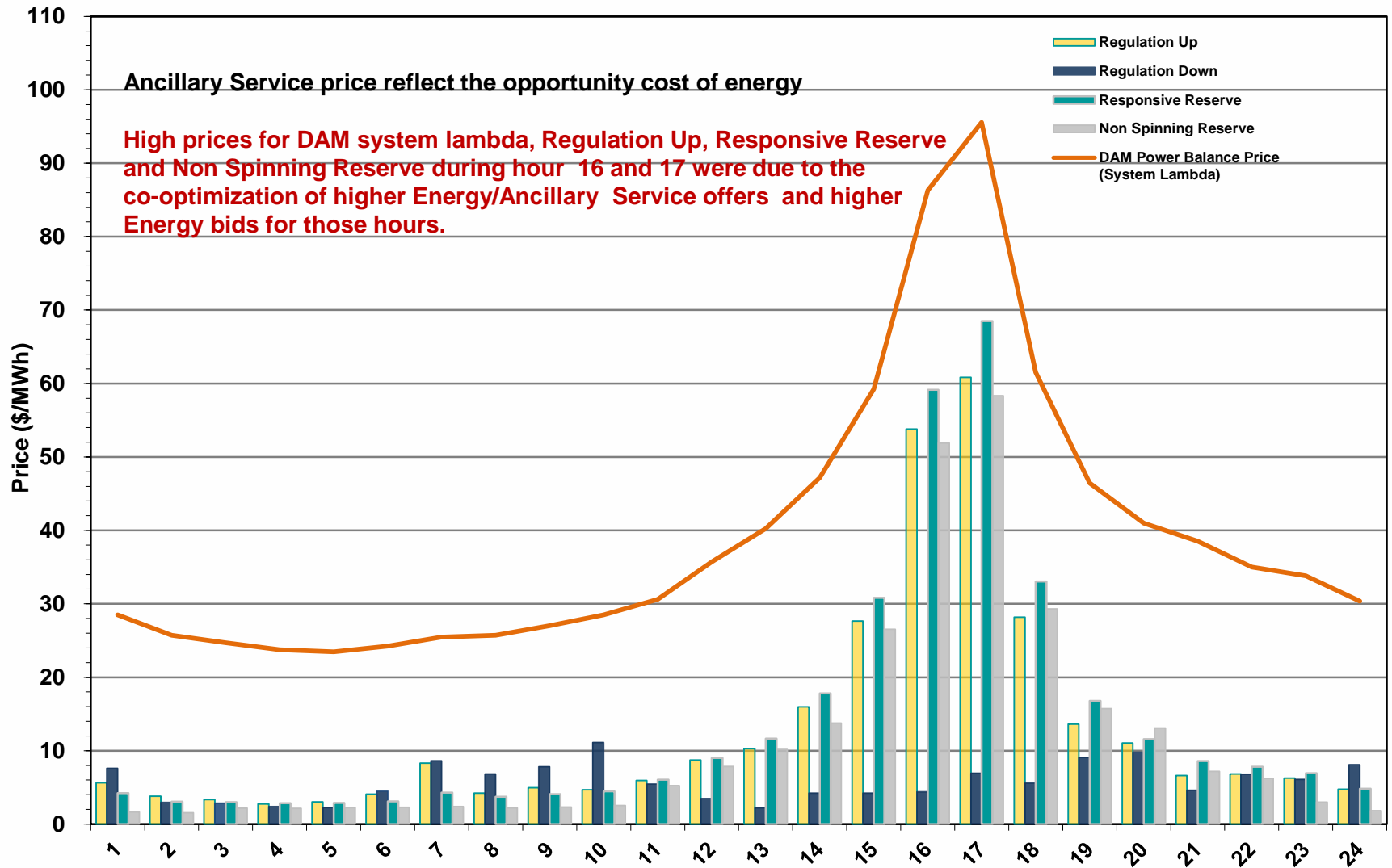
# **Market Operations**

---

# Day-Ahead Schedule (Hourly Average) – August 2014

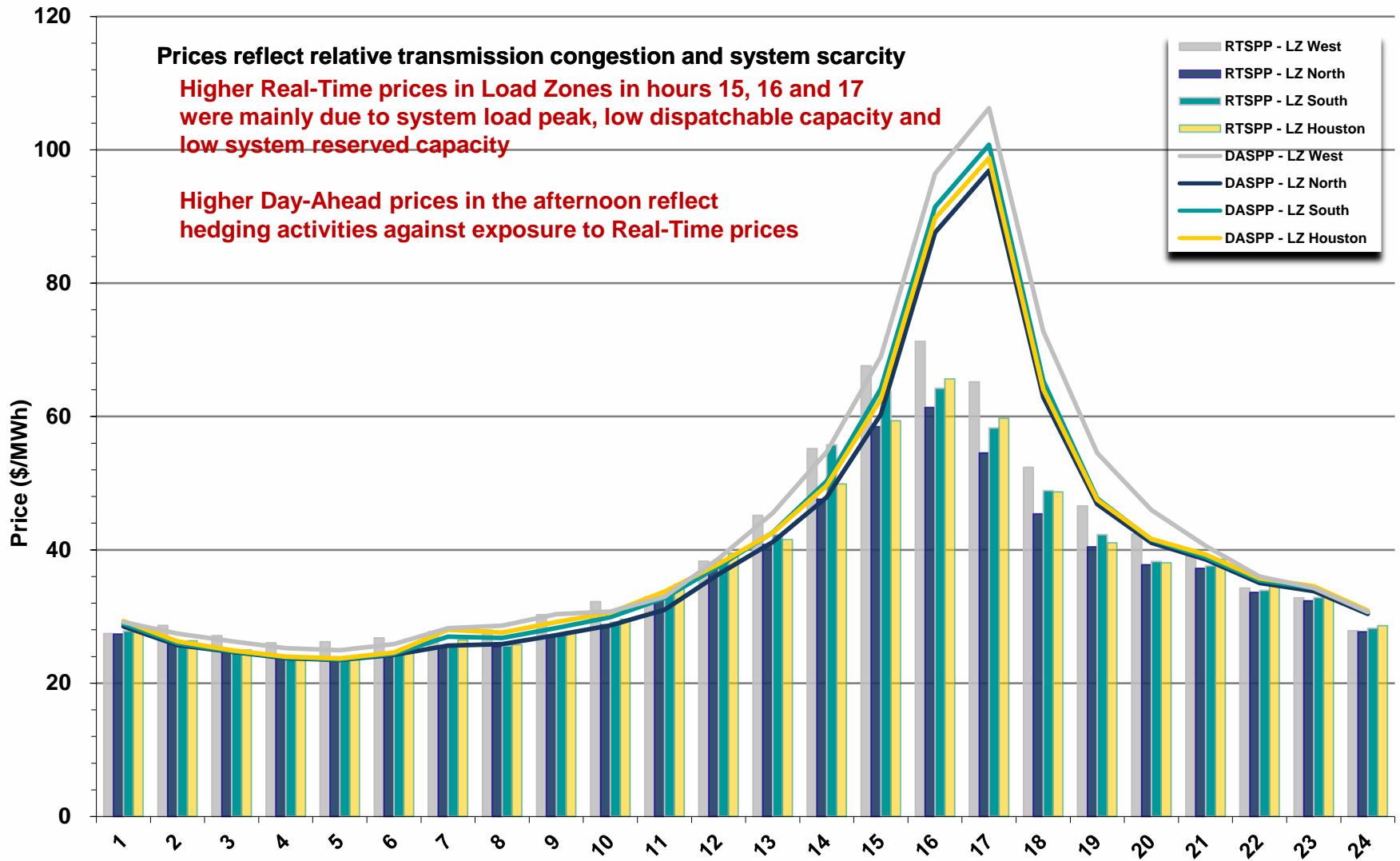


# Day-Ahead Electricity And Ancillary Service Hourly Average Prices – August 2014

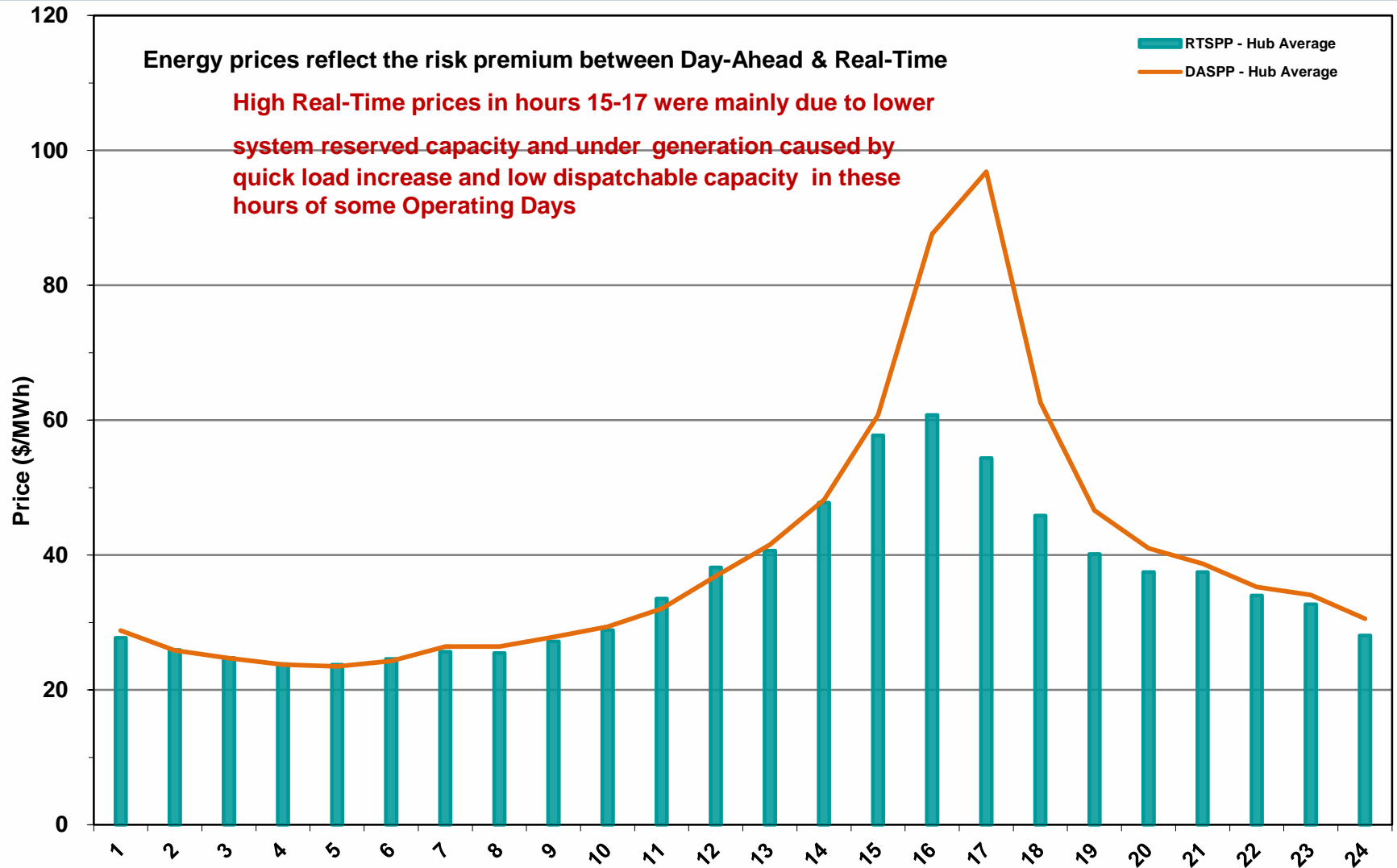




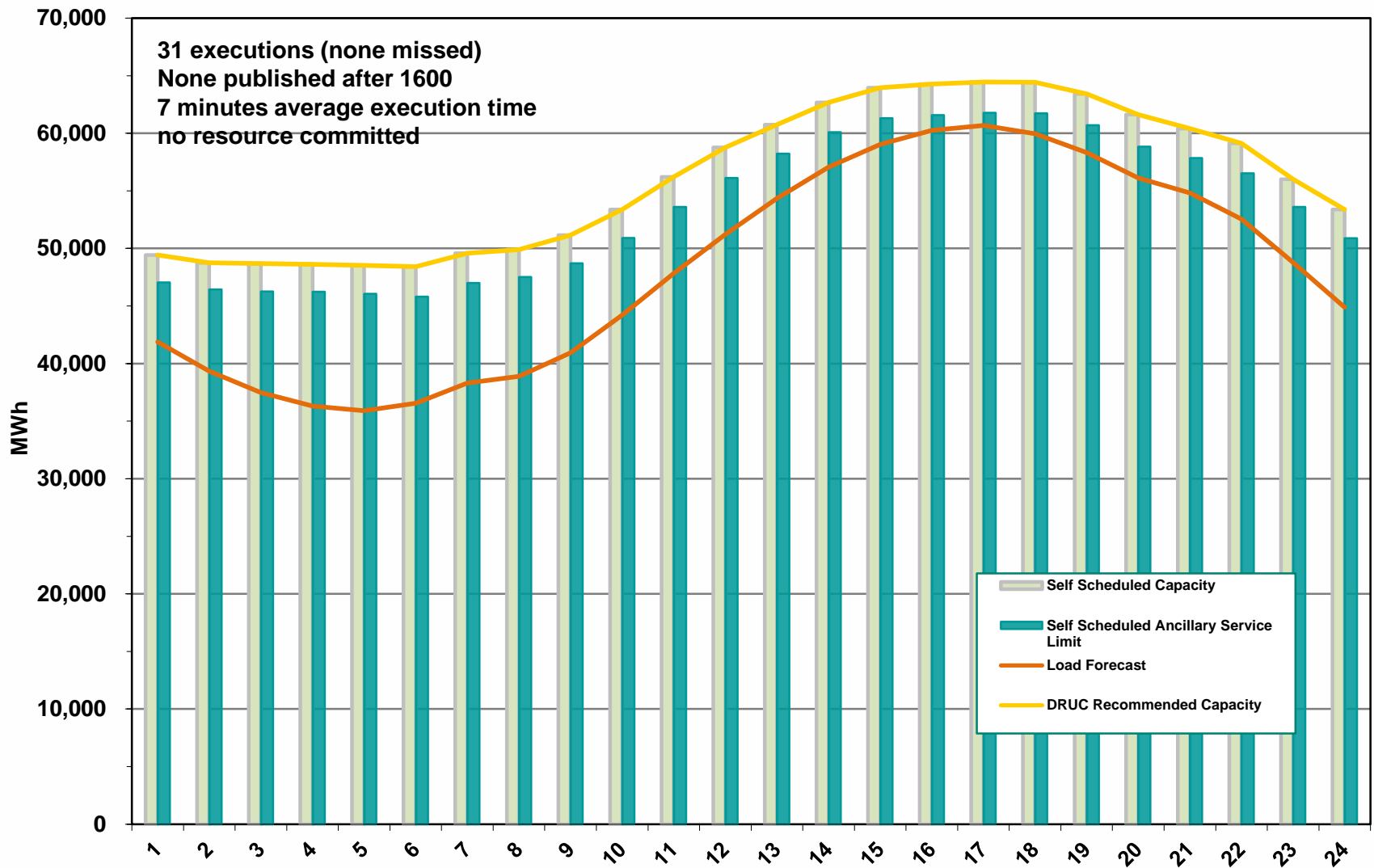
# Day-Ahead Vs Real-Time Load Zone SPP (Hourly Average) – August 2014



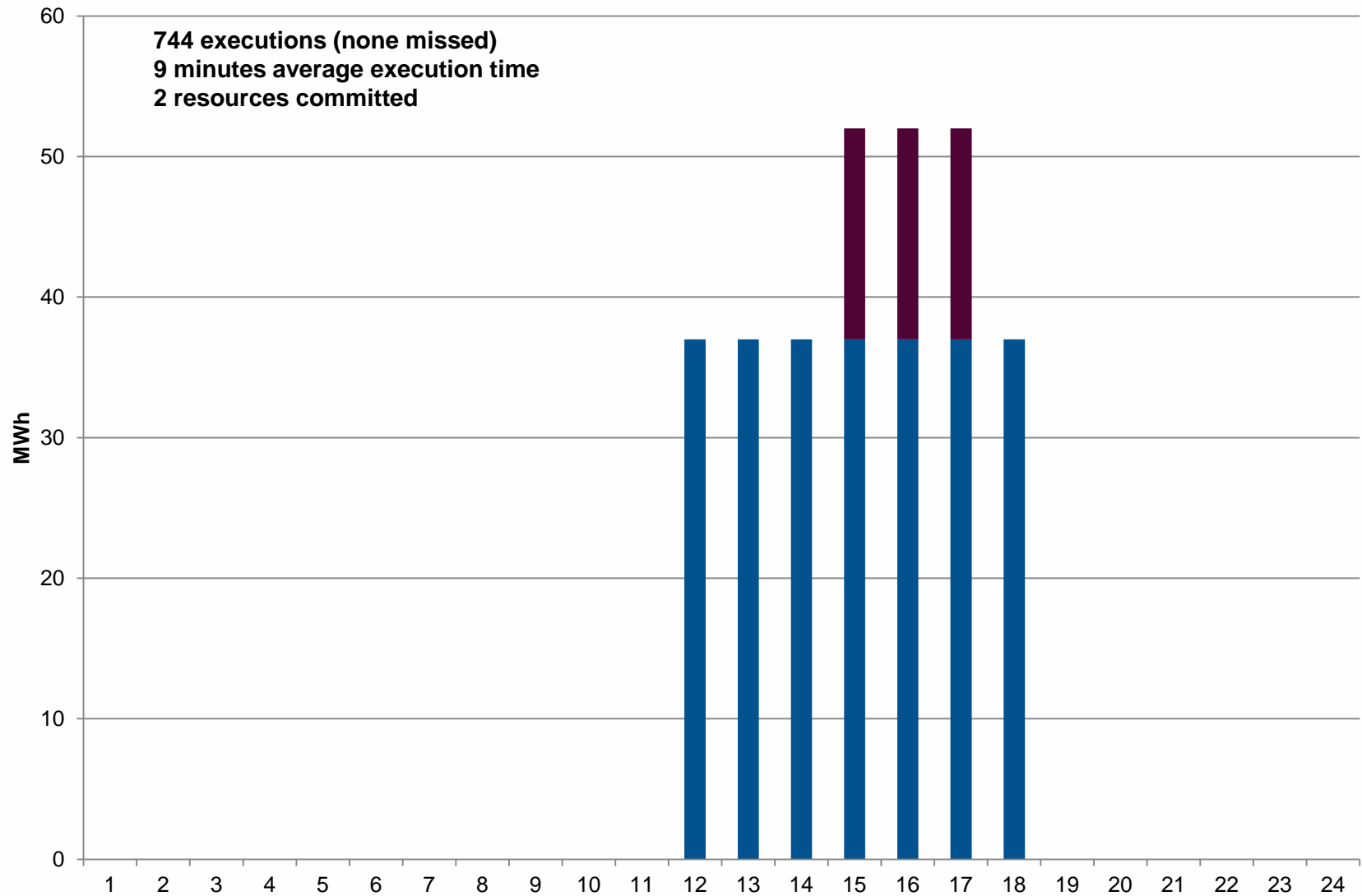
## Day-Ahead Vs Real-Time Hub Average SPP (Hourly Average) – August 2014



# DRUC Monthly Summary (Hourly Average) – August 2014



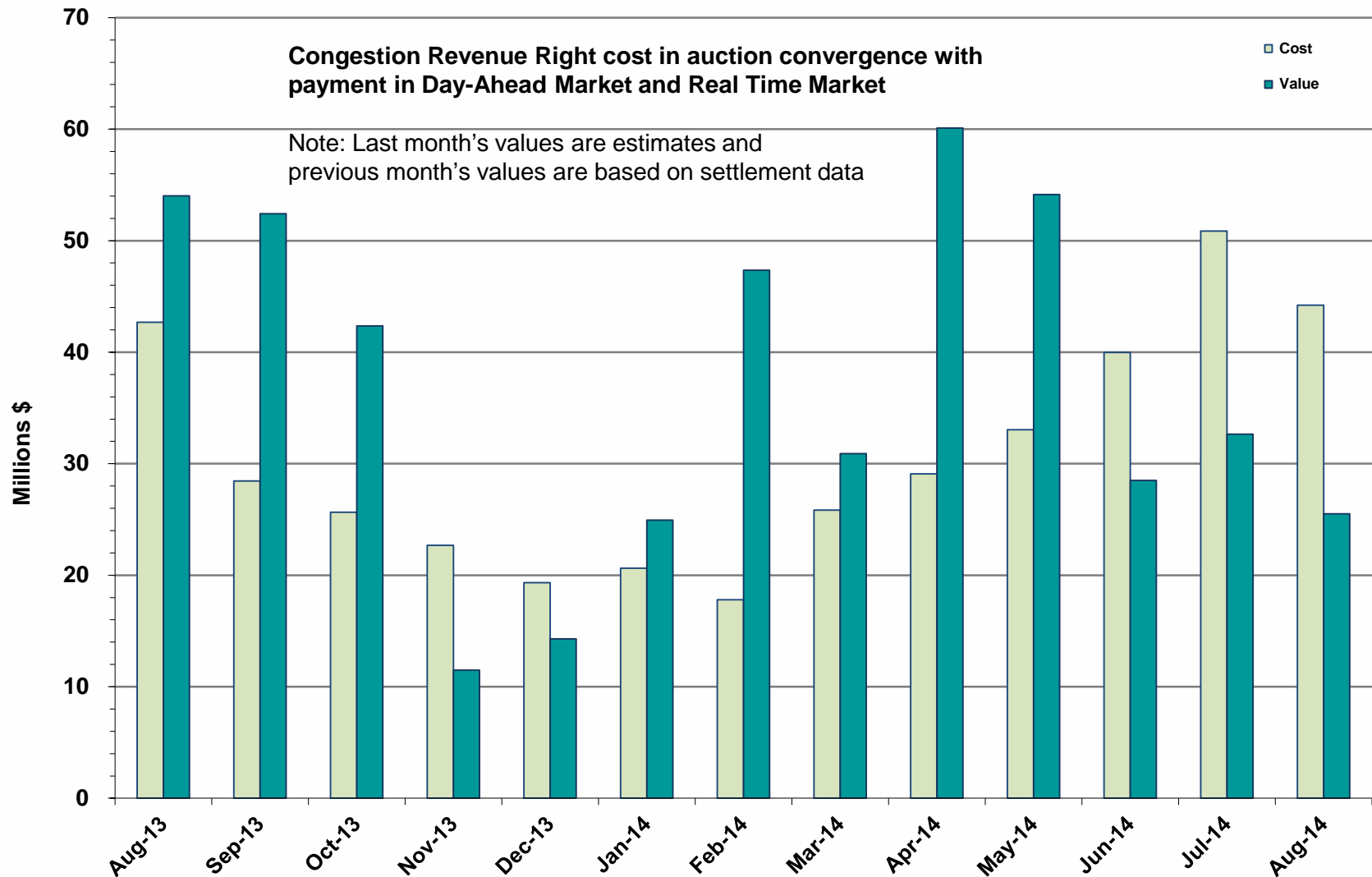
# HRUC Monthly Summary – August 2014



## Non-Spinning Reserve Service Deployment – August 2014

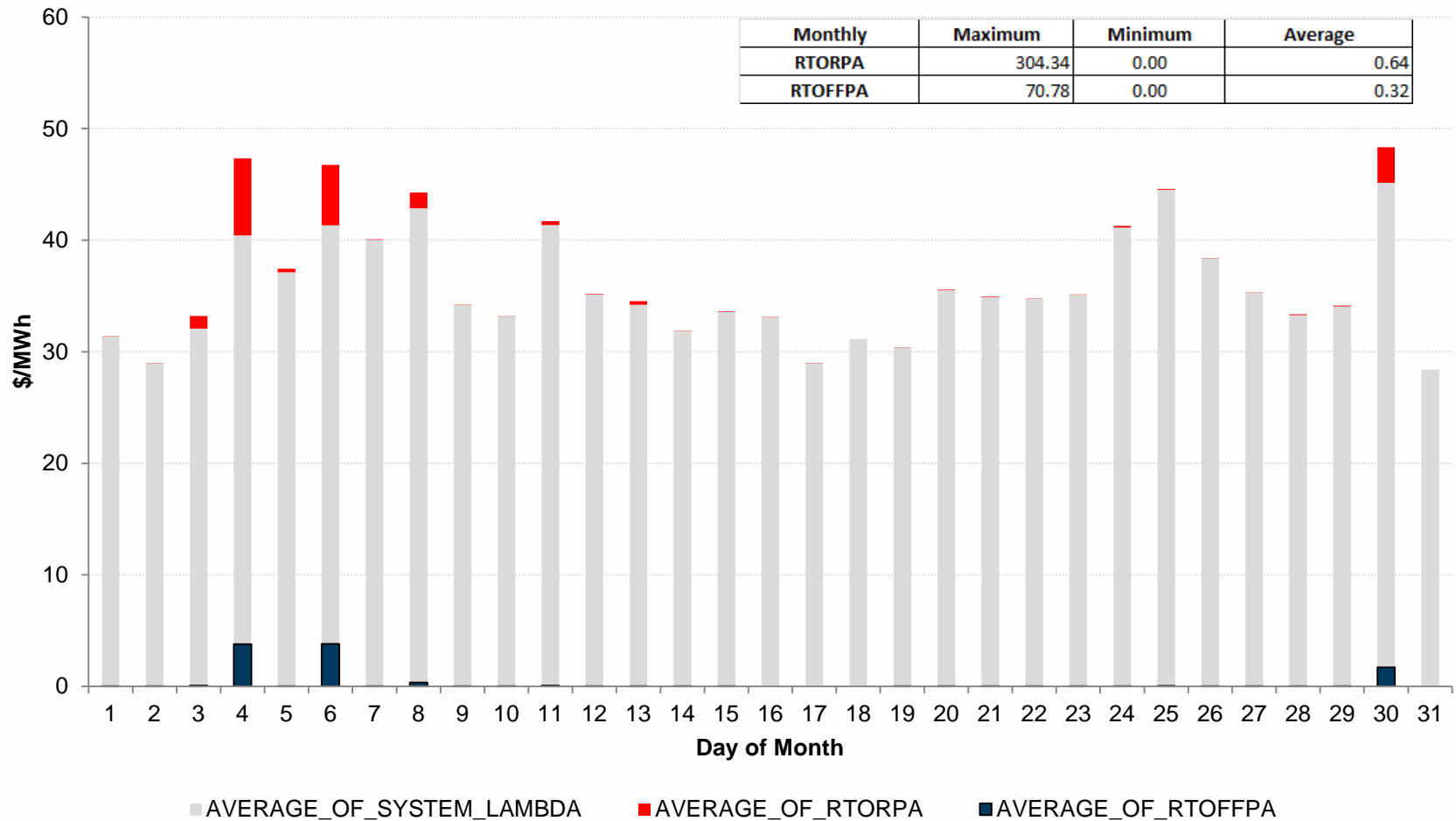
Deployment Start Time	Deployment End Time	Deployment Duration (Hours)	Max Deployment (MW)	Reason
None				

# CRR Price Convergence – August 2014



# ORDC Price Adder (Daily Average) – August 2014

Average Daily Real-Time System Lambda, Real-Time On-Line Reserve Price Adder (RTORPA), and Real-Time Offline Reserve Price Adder (RTOFFPA) - August 2014



# ERS Procurement for **June 2014 – September 2014**

JunSep2014 cleared with a common Clearing Price for ERS-10, ERS-30, and ERS-WS.

	BH1	BH2	BH3	NBH
ERS-10 MW Procured	630.614	454.03	451.533	574.559
ERS-30 MW Procured	200.874	166.954	152.467	163.905
ERS-WS MW Procured	N/A	21.6	21.6	N/A
Clearing Price (Per MW per Hour)	\$3.00	\$38.53	\$39.43	\$3.35

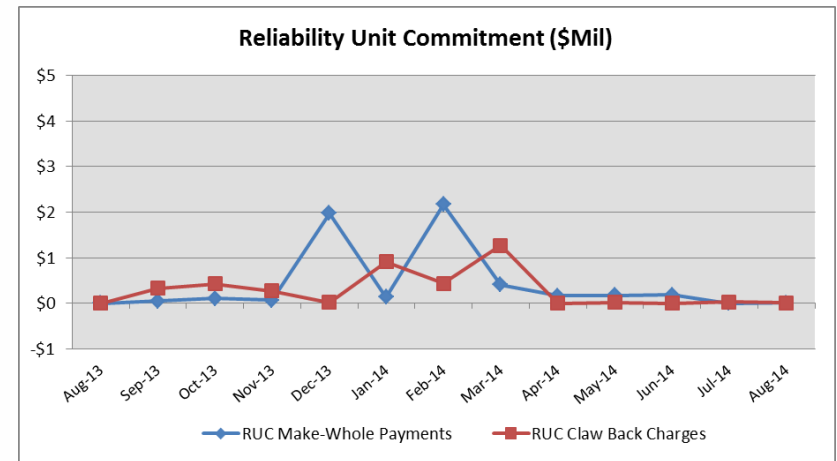
BH1 - Business Hours 1  
BH2 - Business Hours 2  
BH3 - Business Hours 3  
NBH - Non-Business Hours

HE 0900 through 1300, Monday thru Friday except ERCOT Holidays  
HE 1400 through 1600, Monday thru Friday except ERCOT Holidays  
HE 1700 through 2000, Monday thru Friday except ERCOT Holidays  
All other hours



# Reliability Services – August 2014

Reliability Unit Commitment (RUC)	\$ in Millions
RUC Make-Whole Payments	(\$0.01)
RUC Clawback Charges	\$0.01
<b>RUC Commitment Settlement</b>	<b>\$0.00</b>
RUC Capacity Short Charges	\$0.01
RUC Make-Whole Uplift	\$0.00
<b>RUC Commitment Cost Allocation</b>	<b>\$0.01</b>
RUC Decommitment Payments	\$0.00



RUC Make-Whole Payments increased in August, while RUC Clawback Charges decreased in August.

RUC settlement allocated directly to load was a credit of \$0.01M in August 2014, compared to:

- \$0.03M credit in July 2014
- No allocation in August 2013

# Capacity Services – August 2014

Capacity Services	\$ in Millions
Regulation Up Service	\$4.09
Regulation Down Service	\$2.08
Responsive Reserve Service	\$24.73
Non-Spinning Reserve Service	\$11.78
Black Start Service	\$0.60
Voltage Services - Reactive Power	\$0.00
Voltage Services - Lost Opportunity	\$0.00
<b>Total Charges</b>	<b>\$43.28</b>

Capacity Services costs were up from last month and from August 2013.

August 2014 cost was \$43.28M, compared to:

- \$28.61M in July 2014
- \$30.20M in August 2013

# Energy Settlement – August 2014

Day-Ahead Market Energy Settlement	\$ in Millions
Energy Purchases	\$760.10
Point to Point Obligation Purchases	\$29.29
RMR Day-Ahead Revenue	\$0.00
Energy Sales	(\$754.60)
Day-Ahead Congestion Rent	\$34.79
Day-Ahead Market Make-Whole Payments	(\$0.08)

Both Day-Ahead Market and Real-Time Market energy settlement activity increased from last month and from August 2013.

Real-Time Market Energy Settlement	\$ in Millions
Energy Imbalance at a Resource Node	(\$779.59)
Energy Imbalance at a Load Zone	\$1,142.20
Energy Imbalance at a Hub	(\$320.40)
Real Time Congestion from Self Schedules	\$0.81
Block Load Transfers and DC Ties	(\$11.78)
Impact to Revenue Neutrality	\$31.24
Emergency Energy Payments	(\$0.10)
Base Point Deviation Charges	\$0.33
Real-Time Metered Generation (MWh in millions)	35.62

# Congestion Revenue Rights (CRR) – August 2014

	\$ in Millions
Annual Auction	(\$35.53)
Monthly Auction	(\$8.69)
<b>Total Auction Revenue</b>	<b>(\$44.22)</b>
Day-Ahead CRR Settlement	(\$25.52)
Day-Ahead CRR Short-Charges	\$0.00
Day-Ahead CRR Short-Charges Refunded	\$0.00
Real-Time CRR Settlement	\$0.00
Real-Time CRR Short-Charges	\$0.00
Real-Time CRR Short-Charges Refunded	\$0.00
<b>Total CRR Funding</b>	<b>(\$25.52)</b>
Day-Ahead Point to Point Obligations Settlement	\$29.29
Real-Time Point to Point Obligation Settlement	(\$35.06)
<b>Net Point to Point Obligation Settlement</b>	<b>( \$5.77)</b>

Congestion Revenue Rights were fully funded and excess funds were available for distribution to load.

Distribution of Balancing Account funds to load for August 2014 was \$9.30M, compared to:

- \$3.69M in July 2014
- \$4.42M in August 2013

Point to Point Obligations settled with a net payment of \$5.77M compared to a net payment of \$3.77M last month.

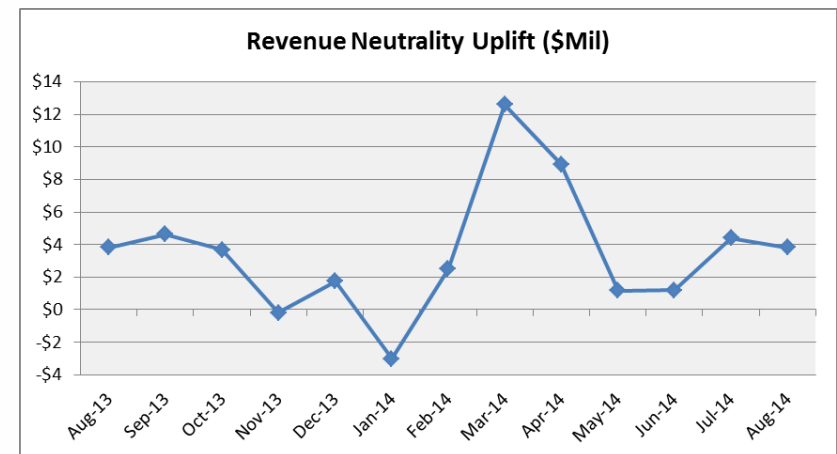
# Revenue Neutrality – August 2014

Revenue Neutrality Settlement	\$ in Millions
Real-Time Point to Point Obligation Settlement	(\$35.06)
Real-Time Point to Point Options and Options with Refund Settlement	\$0.00
Real-Time Energy Imbalance Settlement	\$42.20
Real-Time Congestion from Self-Schedules Settlement	\$0.81
DC Tie & Block Load Transfer Settlement	(\$11.78)
<b>Charge to Load</b>	<b>\$3.83</b>

Revenue Neutrality charges to load decreased compared to last month and slightly increased compared to August 2013.

August 2014 was a charge of \$3.83M, compared to:

- \$4.39M charge in July 2014
- \$3.82M charge in August 2013



# Real Time Ancillary Service Imbalance (ORDC)- August 2014

Real Time Ancillary Service Imbalance	\$ in Thousands
Real-Time AS Imbalance Payment Amount	(\$204.21)
Load Allocated AS Imbalance Revenue Neutrality Amount	\$204.21
<b>Total Charges</b>	<b>\$204.21</b>

Real Time Ancillary Service Imbalance settlements increased from July 2014 to August 2014. Total payments for the month of July 2014 were \$57,500 compared to a payment of \$204,206 in August 2014.

4 of the 31 days in August had settlement dollars equal to \$0 for the day.

All days were settled as a net credit to QSEs representing generation and as a charge to QSEs representing load.

The highest settlement occurred on August 30<sup>th</sup>. The total Real Time Ancillary Service Imbalance payments on that day were \$56,820.14.

# Net Allocation to Load – August 2014

## Market-Based Allocation

\$ in Millions

CRR Auction Revenue Disbursement Settlement	(\$44.22)
Balancing Account Proceeds Settlement	(\$9.30)
Net Reliability Unit Commitment Settlement	\$0.00
Ancillary Services Settlement	\$43.28
Reliability Must Run Settlement (incl. RMR for Capacity)	\$0.00
Real-Time Revenue Neutrality Settlement	\$3.83
Emergency Energy Settlement	\$0.10
Base Point Deviation Settlement	(\$0.33)
ORDC Settlement	\$0.20
<b>Total</b>	<b>(\$6.44)</b>

## Fee Allocation

ERCOT Administrative Fee Settlement	\$16.74
-------------------------------------	---------

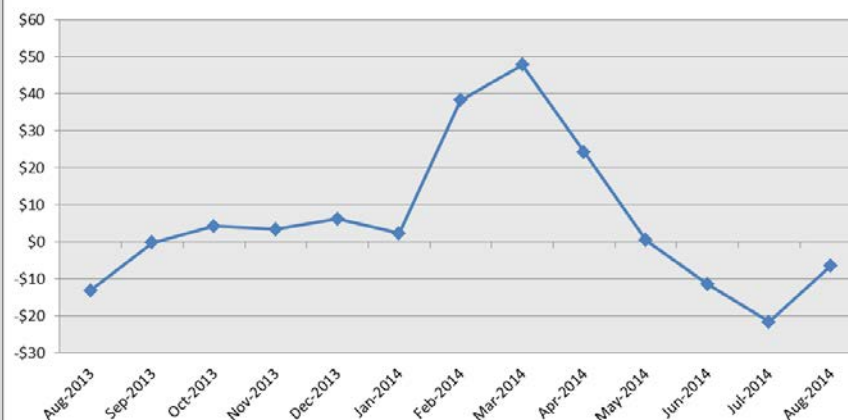
**Net Allocated to Load \$10.30**

The charge for the net allocation to Load increased from last month and from August of 2013.

August 2014 was a charge of \$10.30M, compared to:

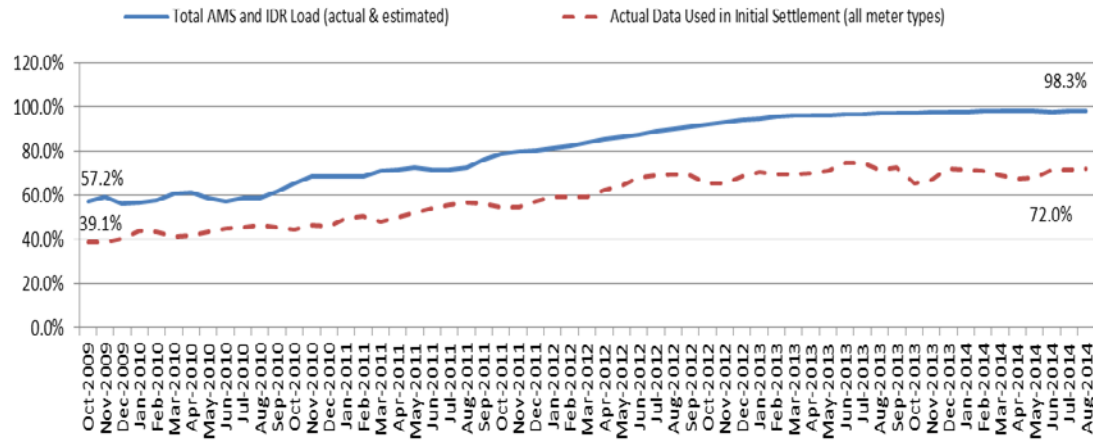
- A credit of \$5.73M in July 2014
- A charge of \$1.67M in August 2013

Market Based Fees Net Impact to Load



# Advanced Meter Settlement Impacts – August 2014

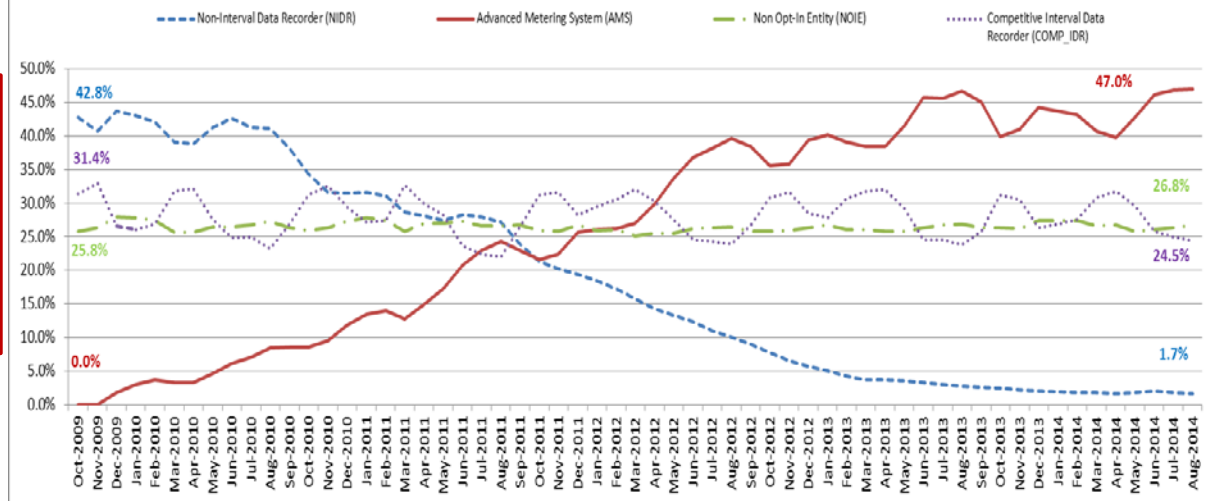
Percent Actual/Percent Interval Data Recorder (IDR)



August 2014: At month end, settling 6.6M ESIIDs using Advanced Meter data.

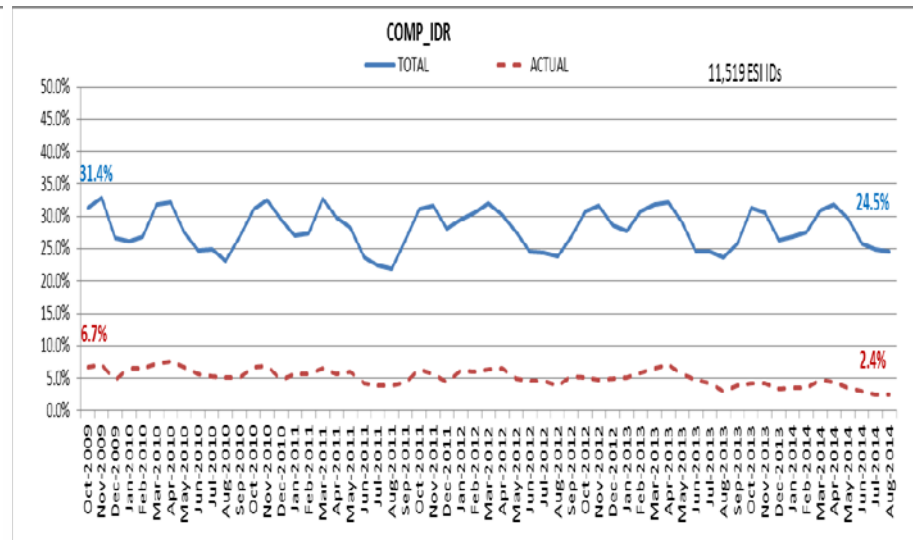
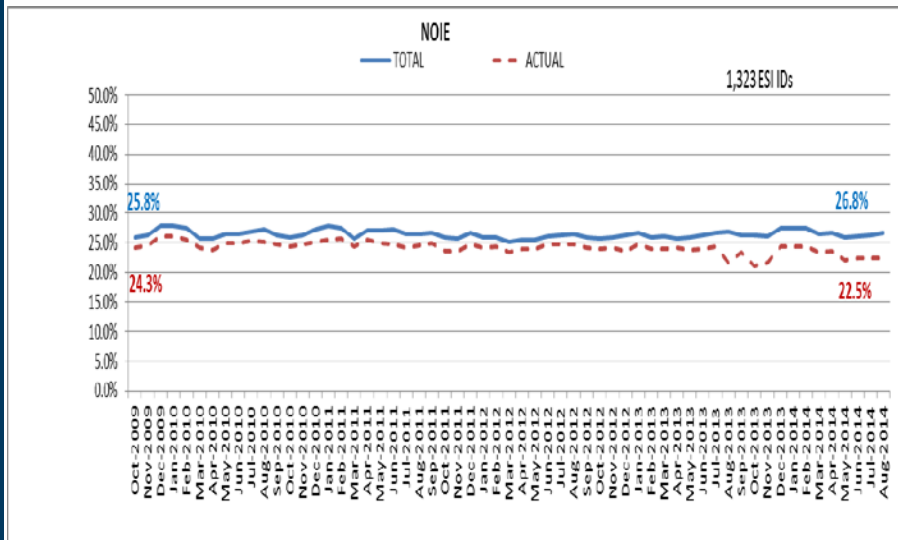
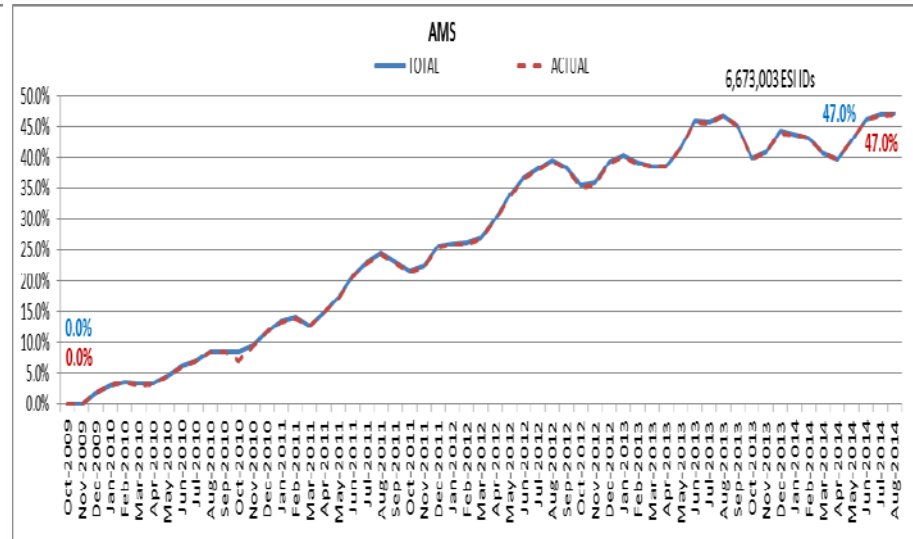
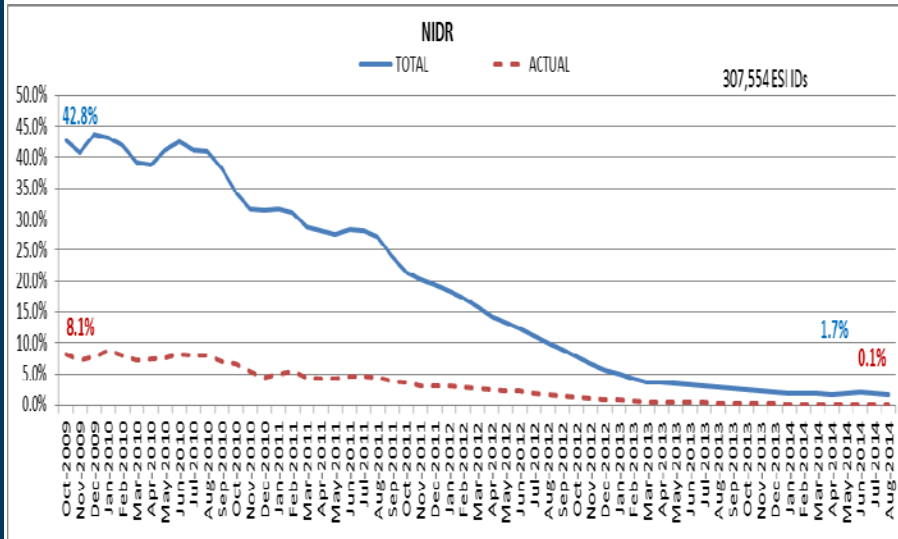
August 2014: 98.3% of the load in ERCOT is settled with 15-min interval data (AMS, Competitive IDR, and NOIE IDR).

Percent of Load by Meter Type





# ERCOT Wide Load Volumes by Meter Type – INITIAL Settlement – August 2014

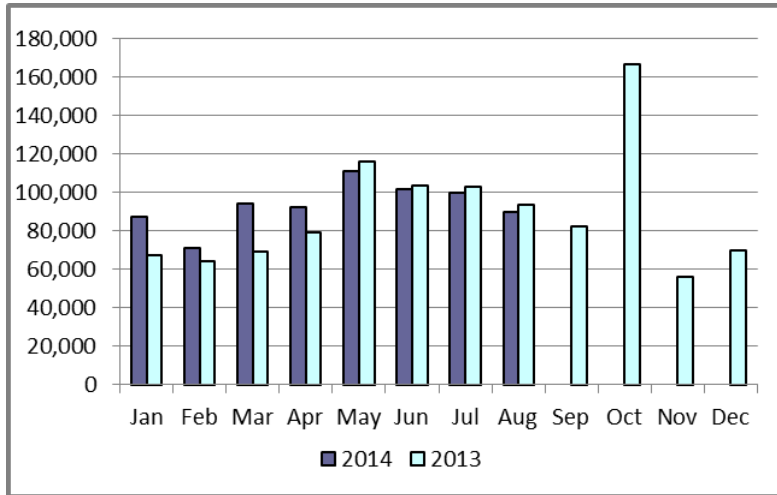


# Retail Transaction Volumes – Summary – August 2014

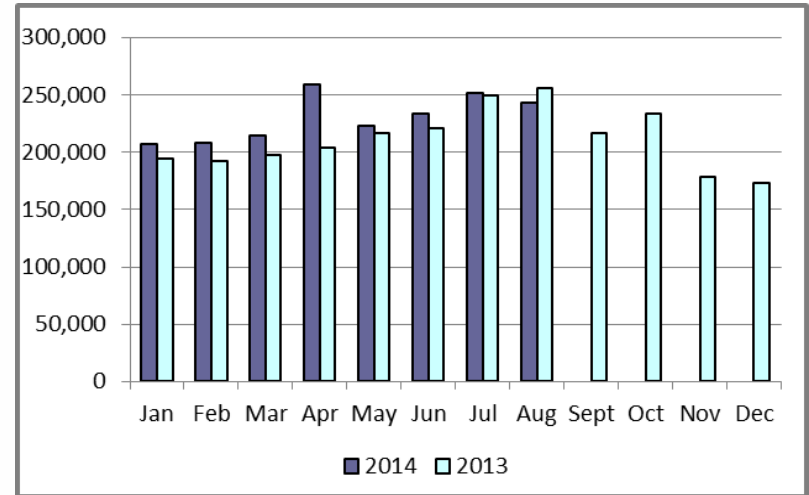
	Year-To-Date		Transactions Received	
Transaction Type	August 2014	August 2013	August 2014	August 2013
Switches	745,765	694,912	89,677	93,194
Acquisition	0	0	0	0
Move - Ins	1,840,911	1,730,534	243,482	255,967
Move - Outs	918,084	931,178	121,662	129,594
Continuous Service Agreements (CSA)	454,260	383,480	40,405	52,585
Mass Transitions	5,614	0	639	0
<b>Total</b>	<b>3,964,634</b>	<b>3,740,104</b>	<b>495,865</b>	<b>531,340</b>

# Retail Transaction Volumes – Summary – August 2014

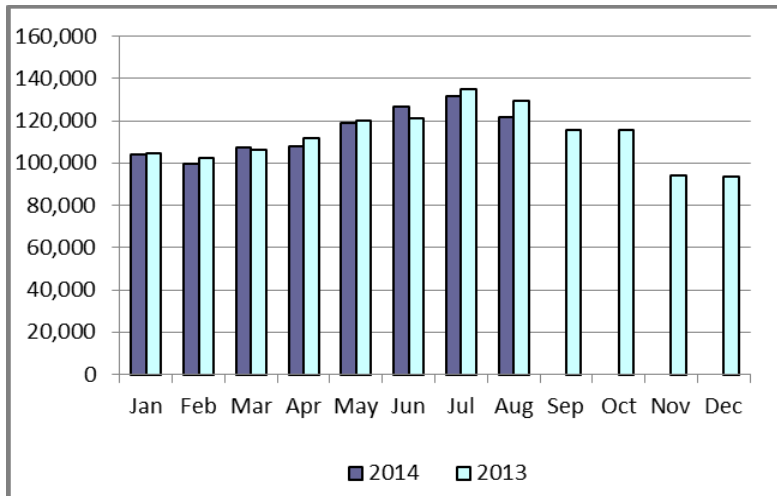
## Switches/Acquisitions



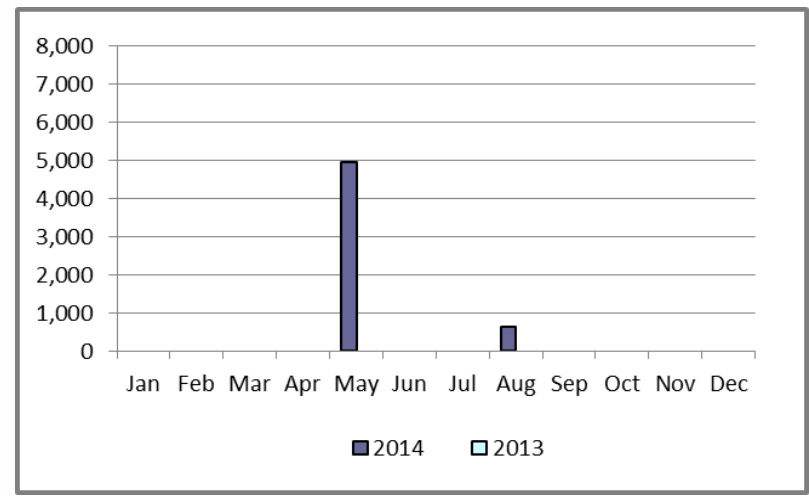
## Move-Ins



## Move-Outs

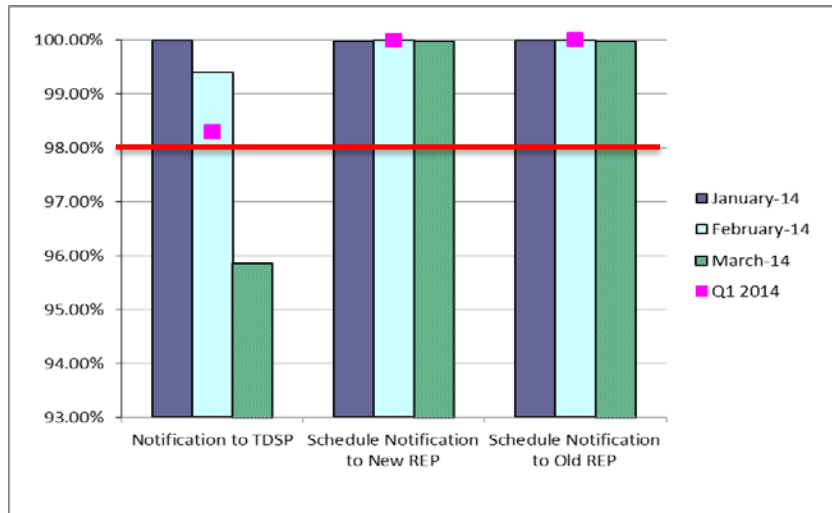


## Mass Transition

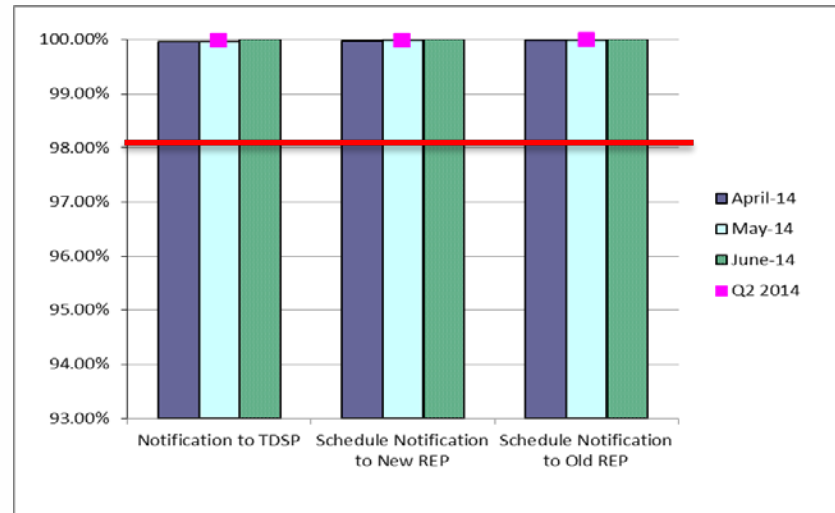


# Retail Performance Measures – Switch – August 2014

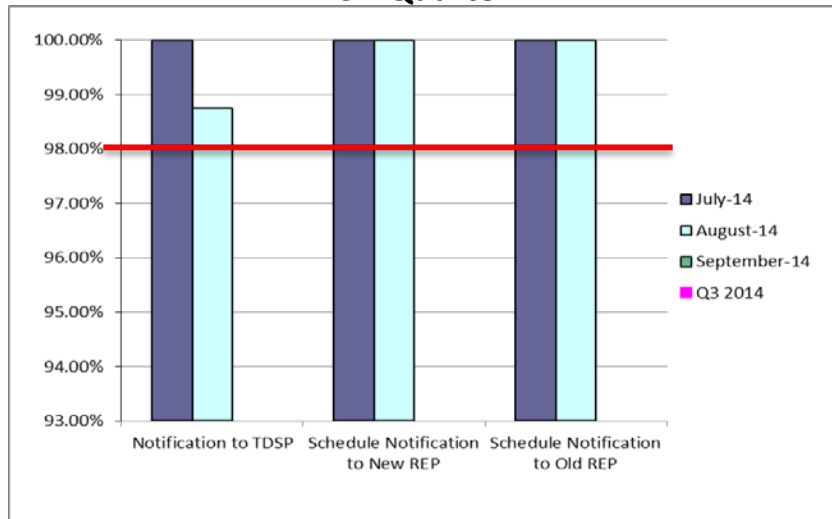
## 1<sup>st</sup> Quarter



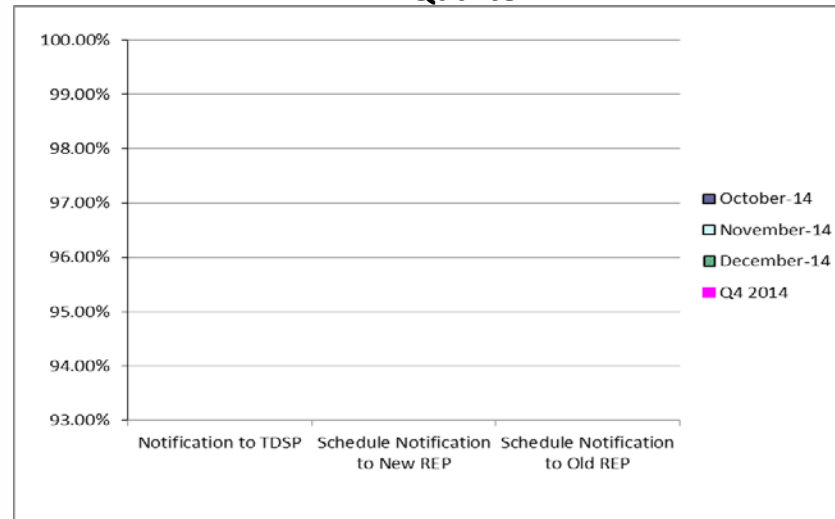
## 2<sup>nd</sup> Quarter



## 3<sup>rd</sup> Quarter

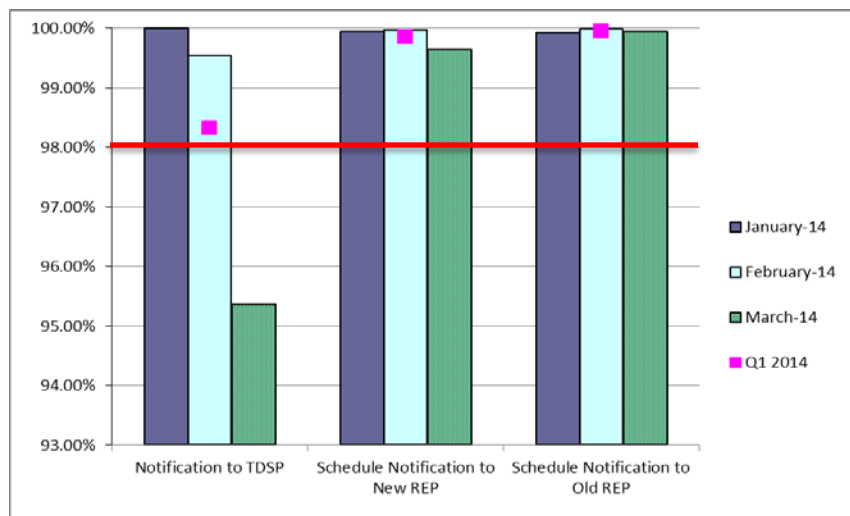


## 4<sup>th</sup> Quarter

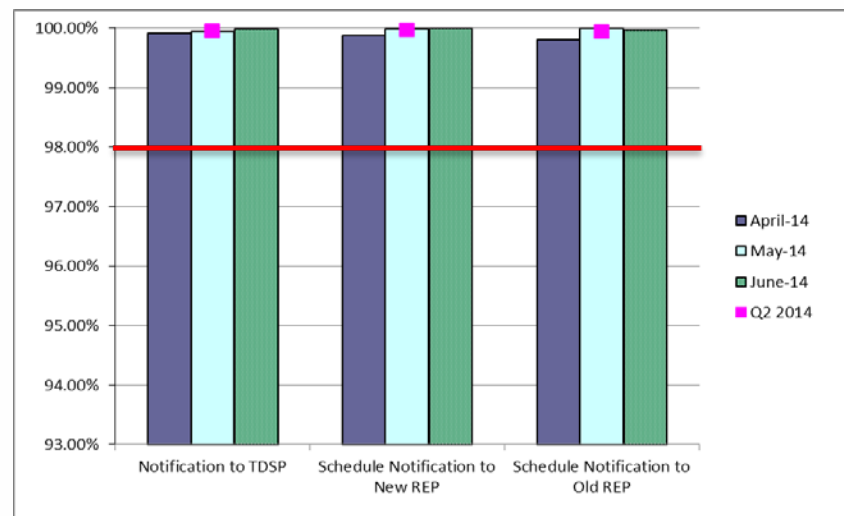


# Retail Performance Measures (Same Day Move-In) – August 2014

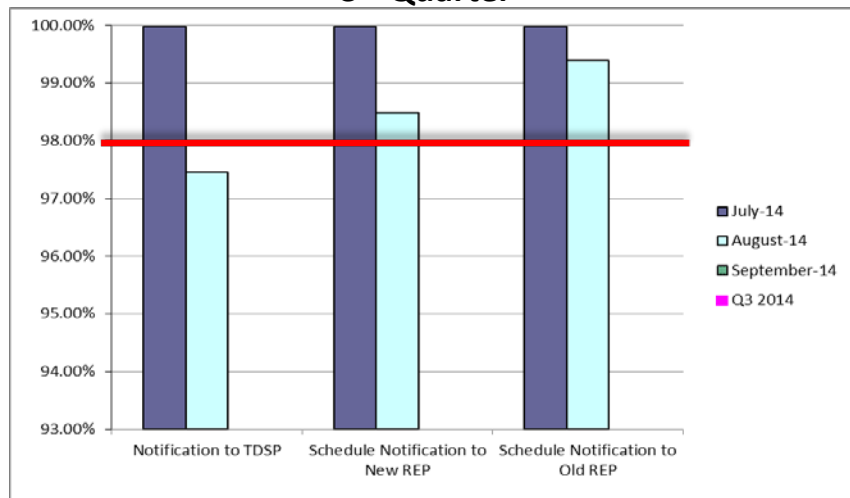
## 1<sup>st</sup> Quarter



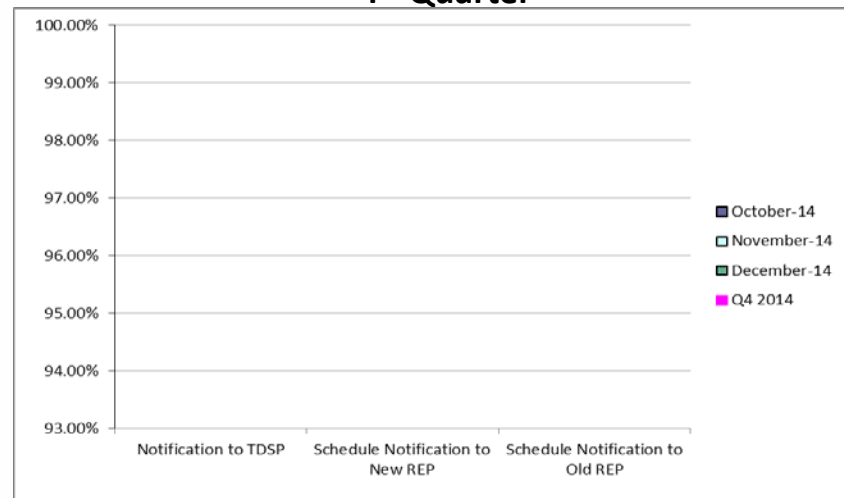
## 2<sup>nd</sup> Quarter



## 3<sup>rd</sup> Quarter

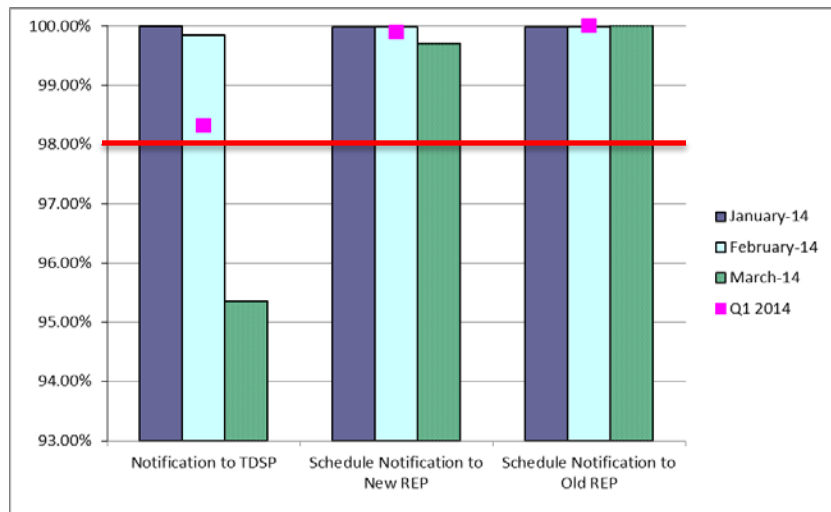


## 4<sup>th</sup> Quarter

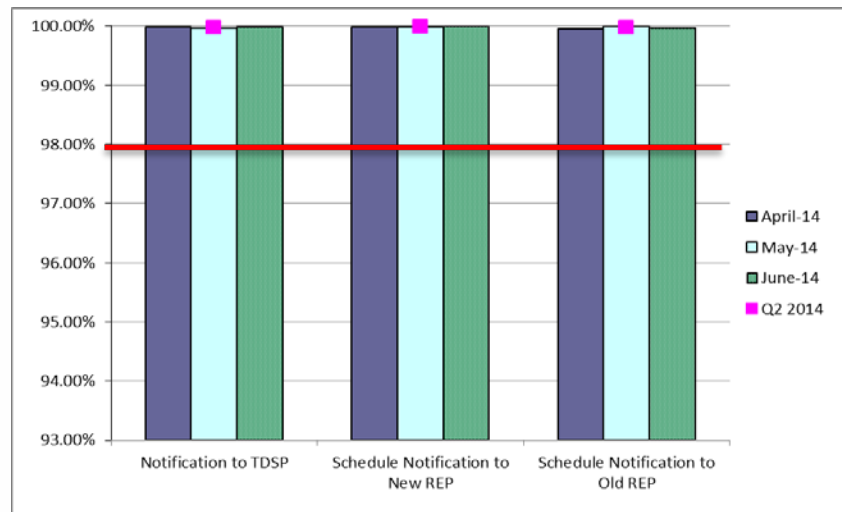


# Retail Performance Measures (Standard Move-In) – August 2014

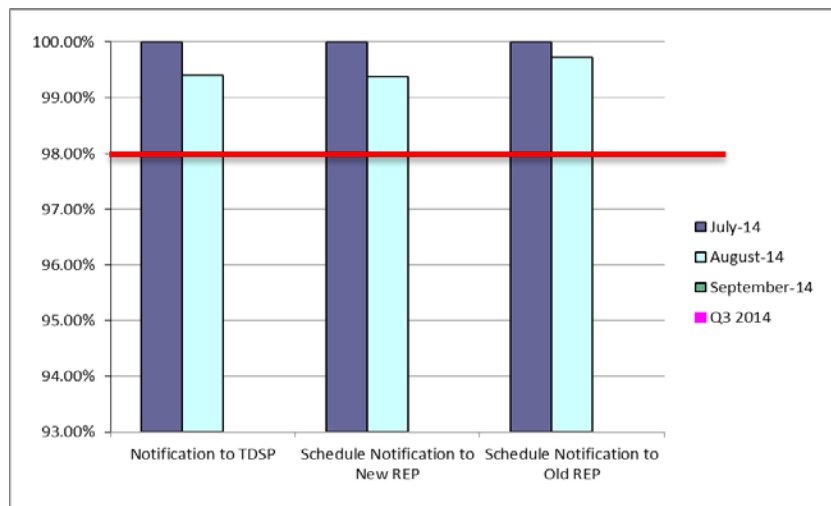
## 1<sup>st</sup> Quarter



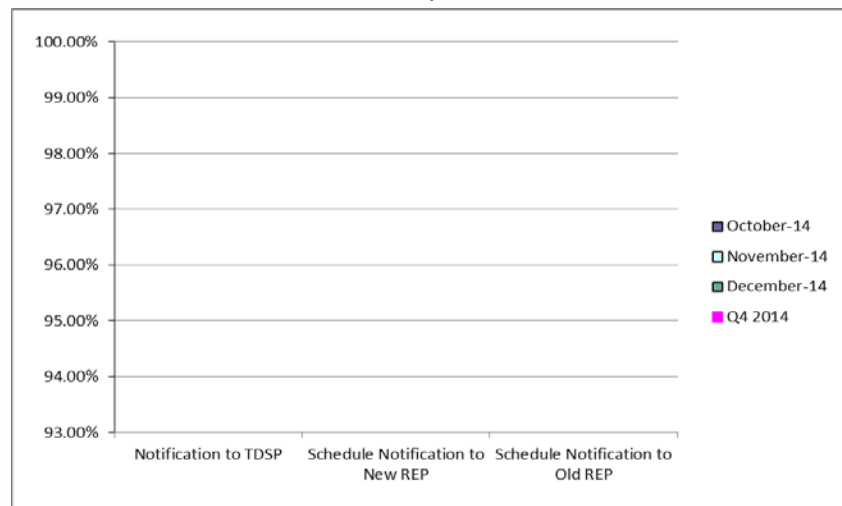
## 2<sup>nd</sup> Quarter



## 3<sup>rd</sup> Quarter



## 4<sup>th</sup> Quarter



---

# **Projects Report**

---

# ERCOT Portfolio Stoplight Report – August 2014

					2014 Project Funding	\$ 25,000,000				
Impact Metric Tolerances						2014 Portfolio Spending Estimate	Total Portfolio Demand			
Unfavorable variances are represented as negative numbers within the report. - Green = No more than 4.9% unfavorable variance - Yellow = Unfavorable variance between 4.9% and 9.9% - Red = Unfavorable variance more than 9.9%			Projects In Flight/On Hold (Count = 67)			\$ 25,455,371	\$ 60,068,513			
			Projects Not Yet Started (Count = 17)			\$ 444,570	\$ 6,203,764			
			Projects Completed (Count = 12)			\$ 311,532	\$ 904,141			
			Spending Reductions Required to Maintain Capital Budget			\$ (1,211,473)	N/A			
			TOTAL				\$ 25,000,000	\$ 67,176,419		
Project Number	Projects in Initiation Phase (Count = 12)	Phase								
141-01	Production Virtualization Expansion	Initiation								
143-01	OSI Pi Visualization Enhancements	Initiation								
TBD	OC-48 Replacement with DWDM	Initiation								
TBD	Move iTron LF Application to High Availability Environment	Initiation								
NPRR500	Posting of Generation that is Off but Available	Initiation								
NPRR543	Message for Confirmed E-Tags	Initiation								
NPRR559	Revisions to MCE Calculation	Initiation								
NPRR597	Utilize Initial Estimated Liability (IEL) Only During Initial Market Activity	Initiation								
NPRR601	Inclusion of Incremental Exposure in Mass Transitions to Counter-Parties that are Registered as QSEs and LSEs and Provide POLR Service	Initiation								
NPRR626	Reliability Deployment Price Adder	Initiation								
SCR775	Posting Results of Real-Time Data in a Display Format	Initiation								
SCR778	Credit Exposure Calculations for NOIE Options Linked to RTM PTP Obligations	Initiation								
Project Number	Projects in Planning Phase (Count = 14)	Phase	Baseline Phase Start	Baseline Phase Finish	Scheduled Go-Live Date	Scheduled Phase Finish	Schedule Impact		Budget Impact	
052-01	EMS Upgrade	Planning Ph2	8/7/2013	10/30/2014	TBD	10/31/2014		0%		1%
065-01	NMMS Upgrade	Planning Ph2	8/1/2013	11/21/2014	TBD	12/5/2014		-2%		1%
074-02	Cyber Security Project #9	Planning	12/17/2013	8/6/2014	TBD	9/22/2014	1	-20%		0%
089-01	Information Technology Change Management	Planning	4/10/2013	4/2/2014	TBD	10/13/2014	1	-54%	1	-30%
104-01	Disaster Recovery: S&B, RTL, MDT	Planning	5/15/2013	11/15/2013	TBD	10/22/2014	1	-185%	1	-14%
106-01	MP Online Data Entry - Ph 1	Planning	10/9/2013	3/5/2014	TBD	1/2/2015	4	-206%		0%
120-01	IT Production Hardening	Planning	2/12/2014	9/24/2014	TBD	9/24/2014		0%		0%
127-01	SQL Server 2012 Upgrade / Cluster Consolidation	Planning	3/6/2014	8/27/2014	TBD	11/19/2014	2	-48%		42%
129-01	Access and Roles Management	Planning	7/1/2014	10/1/2014	TBD	10/29/2014	2	-30%	2	-5%
133-01	Testing Environment Management	Planning	8/27/2014	10/15/2014	TBD	10/8/2014		14%		0%
134-01	Privileged Account Management	Planning	6/5/2014	11/19/2014	TBD	11/19/2014		0%		0%
142-01	Implementation of NERC BAL-TRE-001 Regional Standard	Planning	8/14/2014	12/19/2014	TBD	12/19/2014		0%		1%
SCR777	Bilateral CRR Interface Enhancement	Planning	8/20/2014	9/19/2014	TBD	9/19/2014		0%		0%
SCR779	Increase to the CRR Auction Transaction Limit	Planning	7/9/2014	8/29/2014	TBD	9/17/2014	1	-37%		9%





# ERCOT Portfolio Stoplight Report – August 2014

Project Number	Projects in Execution Phase (Count = 23)	Phase	Baseline Phase Start	Baseline Go-Live Target	Scheduled Go-Live Date	Scheduled Phase Finish	Schedule Impact		Budget Impact	
10052_01	Settlement System Upgrade	Execution	1/25/2012	12/23/2014	12/6/2014	4/17/2015		1%		-4%
017-01	Oracle 11g Upgrade	Execution	10/10/2012	7/26/2014	8/7/2014	8/7/2014		-1%		-2%
057-01	EPS Metering DB Redesign	Execution	4/17/2013	9/6/2013	10/22/2014	11/19/2014	2	-289%	2	-173%
066-01	Planning Site Transition to MIS	Execution	7/2/2014	10/16/2014	10/16/2014	12/3/2014		0%		16%
097-01	ABB MMS OS Technology Refresh	Execution	8/15/2014	3/26/2015	3/26/2015	5/8/2015		0%		0%
115-01	Cyber Security Project #14	Execution	6/30/2014	1/15/2015	1/15/2015	3/6/2015		0%		0%
116-01	Collage Replacement	Execution	2/6/2014	9/22/2014	12/9/2014	1/2/2015	4	-34%	2	-32%
121-01	2013/2014 Network Refresh	Execution	5/14/2014	10/17/2014	10/17/2014	10/17/2014		0%		14%
122-01	Infoblox DNS/DHCP	Execution	5/21/2014	11/5/2014	11/5/2014	11/5/2014		0%		25%
128-0x	Capital Efficiencies and Enhancements - 2014	Execution	1/1/2014	12/31/2014	12/31/2014	12/31/2014		0%		3%
128-04	Reactive Test Forms Revision	Execution	5/19/2014	9/26/2014	9/26/2014	10/31/2014		0%	NA	See #128-01
130-01	Electronic Crisis Communications Enhancements	Execution	6/19/2014	12/12/2014	12/8/2014	1/16/2015		2%		5%
131-01	Email Gateway Refresh	Execution	7/23/2014	9/17/2014	9/17/2014	9/17/2014		0%		12%
135-01	Common Infrastructure - 2014	Execution	1/1/2014	12/31/2014	12/31/2014	12/31/2014		0%		62%
137-01	EIS Reporting and Control Systems Upgrade	Execution	8/13/2014	1/15/2015	1/15/2015	1/28/2015		0%		1%
99914	Minor Cap - 2014	Execution	1/1/2014	12/31/2014	12/31/2014	12/31/2014	NA	0%		28%
2014 PC	Program Control - 2014	Execution	1/1/2014	12/31/2014	12/31/2014	12/31/2014	NA	0%		8%
NPRR467	Balancing Account Resettlement Due to DAM Resettlement	Execution	7/1/2014	12/6/2014	12/6/2014	4/8/2015		0%	NA	See #10052
NPRR485	Clarification for Fuel Adder Provisions	Execution	10/23/2013	9/30/2014	9/30/2014	10/31/2014		0%	NA	See #128-01
NPRR571	ERS Weather-Sensitive Loads Requirements	Execution	4/8/2014	9/30/2014	9/30/2014	10/31/2014		0%	NA	See #128-01
NPRR580	Establishment of a Rolling CRR Balancing Account Fund	Execution	7/1/2014	12/6/2014	12/6/2014	4/8/2015		0%	NA	See #10052
NPRR586	Align Credit Lock for CRR Auctions with Transaction Submission Deadline	Execution	7/2/2014	9/26/2014	9/22/2014	10/28/2014		4%		6%
SCR774	Enhancement to Outage Scheduler and Reports	Execution	2/26/2014	9/26/2014	9/26/2014	10/31/2014		0%	NA	See #128-01



# ERCOT Portfolio Stoplight Report – August 2014

Project Number	Projects in Stabilization (Count = 16)	Phase	Baseline Execution Phase Start	Baseline Go-Live Target	Actual Go-Live Date	Scheduled Execution Phase Finish	Schedule Impact		Budget Impact	
NPRR240	Proxy Energy Offer Curve	Execution	1/8/2014	2/7/2014	2/7/2014	9/26/2014		0%	NA	See #117-01
NPRR491	Updated Distribution Generation and Demand Response Information for ERCOT	Execution	2/26/2014	8/1/2014	8/1/2014	8/31/2014		0%	NA	See #128-01
NPRR532	Performance Measurement and Verification and Telemetry Requirements for Load Resources Providing Non-Spin	Execution	1/8/2014	6/1/2014	6/1/2014	9/26/2014		0%	NA	See #117-01
NPRR555	Load Resource Participation in Security-Constrained Economic Dispatch	Execution	1/8/2014	6/1/2014	6/1/2014	9/26/2014		0%	NA	See #117-01
NPRR564	Thirty-Minute Emergency Response Service (ERS) and Other ERS Services	Execution	1/8/2014	4/27/2014	4/18/2014	9/26/2014		8%	NA	See #117-01
NPRR568	Real-Time Reserve Price Adder Based on Operating Reserve Demand Curve	Execution	1/8/2014	6/1/2014	6/1/2014	9/26/2014		0%	NA	See #117-01
SCR756	Market Enhancements - Remaining SCR756 Items	Execution	2/5/2014	8/17/2014	8/17/2014	9/19/2014		0%		2%
SCR769	CRRRAH Digital Certificate New Role for Read Only Access	Execution	3/20/2014	8/1/2014	8/1/2014	9/10/2014		0%		15%
047-01	CMSDK/MIR Replacement	Execution	4/24/2013	12/8/2013	4/15/2014	10/22/2014	2	-56%	2	-57%
077-01	Contract Lifecycle Management	Execution	9/11/2013	5/5/2014	8/20/2014	10/8/2014	2	-45%		-1%
083-01	Centralized Application Log Management	Execution	8/28/2013	5/7/2014	3/27/2014	8/27/2014		16%		0%
107-01	IBM AIX Operating System Upgrades	Execution	1/29/2014	5/2/2014	5/2/2014	12/17/2014		0%		0%
110-01	Taylor Control Room Upgrade	Execution	2/19/2014	7/7/2014	6/4/2014	11/5/2014		23%		14%
117-01	2014 Market System Enhancements	Execution	1/8/2014	6/1/2014	6/1/2014	9/26/2014		0%	5	-19%
119-01	CREZ Voltage Control and Coordination	Execution	3/6/2014	4/18/2014	4/18/2014	10/1/2014		0%		41%
132-01	Client Digital Certificate Upgrade	Execution	6/12/2014	8/17/2014	8/17/2014	9/17/2014		0%		4%
Project Number	Projects On Hold (Count = 2)	Phase	Forecast Start Date	Baseline Phase Finish	Scheduled Go-Live Date	Scheduled Phase Finish	Schedule Impact		Budget Impact	
NPRR327	State Estimator Data Redaction Methodology	On Hold	12/5/2012	2/12/2013	TBD	TBD	3		3	
SCR772	New Extract for Five Minute Interval Settlement Data	On Hold	2/12/2014	4/19/2014	TBD	TBD	3		3	
Project Number	Projects Completed in the Current Year (Count = 12)	Phase	Baseline Execution Phase Start	Baseline Go-Live Target	Actual Go-Live Date	Actual Execution Phase Finish	Schedule Status		Total Variance	
<b>PROJECTS COMPLETED IN 2014 (Count = 12) Sorted by Project Number</b>										<b>17%</b>
NPRR425	Creation of a WGR Group for GREDP and Base Point Deviation Evaluation	Complete	8/21/2013	3/26/2014	3/3/2014	3/31/2014		10%		46%
NPRR509	Shortened RTM Settlement Timeline	Complete	12/11/2013	2/23/2014	2/23/2014	2/23/2014		0%	NA	See #128-01
NPRR570	Reduce RTM Settlement Timeline to Operating Day Plus Five	Complete	2/16/2014	4/27/2014	4/18/2014	4/27/2014		12%	NA	See #128-01
NPRR575	Clarification of the RUC Resource Buy-Back Provision for Ancillary Services	Complete	12/10/2013	1/7/2014	1/7/2014	1/31/2014		0%	NA	See #78-01
NOGRR105	Generation Resource Frequency Response Test Procedure	Complete	12/4/2013	2/7/2014	2/7/2014	3/26/2014		0%		31%
016-01	ADP-IDM Interface	Complete	11/6/2013	3/26/2014	3/26/2014	5/6/2014		0%		23%
101-01	Emergency Notification System Hardware Refresh	Complete	11/13/2013	1/24/2014	12/20/2013	1/24/2014		48%		-2%
108-01	Alstom Load Forecasting Upgrade	Complete	11/20/2013	4/23/2014	4/16/2014	5/14/2014		4%		4%
113-01	Dev Hardware Refresh and Virtualization Expansion	Complete	11/13/2013	1/24/2014	1/9/2014	2/28/2014		20%		-2%
114-01	Lawson Security	Complete	1/29/2014	2/17/2014	2/17/2014	3/5/2014		0%	2	-36%
118-01	Mitigation Plan RTCA Enhancements	Complete	2/5/2014	4/18/2014	4/17/2014	5/8/2014		1%		0%
125-01	VSAT/TSAT Upgrade	Complete	3/27/2014	7/16/2014	6/10/2014	7/2/2014		32%		34%
<b>Footnotes</b> 1 - Current phase took longer than expected, resulting in additional funding and/or time required 2 - Current phase requiring more labor than expected, resulting in additional funding and/or time required 3 - Project placed on hold 4 - Resource constraints resulted in delay to current phase 5 - Project was on an urgent timeline to meet a pre-defined target implementation date. Compressed project planning required budget estimation before full requirements were known. Additional effort needed, resulting in additional funding. NA - Metric not calculated because: - it is reported at the parent project level, or - it is an administrative project										



# ERCOT Portfolio Stoplight Report – August 2014

Project Number	Projects Not Yet Started (Count = 17)	Phase	Forecast Start Date
<b>PROJECTS NOT YET STARTED (Count = 17) Sorted by Start Date</b>			
NPRR495	Changes to Ancillary Services Capacity Monitor	Not Started	Sep-2014
NPRR556	Resource Adequacy During Transmission Equipment Outage	Not Started	Sep-2014
NPRR589	Ancillary Service Offers in the Supplemental Ancillary Services Market	Not Started	Sep-2014
OBD	Setting the Shadow Price Caps and Power Balance Penalties in Security-Constrained Economic Dispatch	Not Started	Sep-2014
TBD	Replace N2N System	Not Started	Sep-2014
TBD	Postgres Evaluation and Pilot	Not Started	Sep-2014
TBD	Browser Upgrade	Not Started	Sep-2014
TBD	EDW Platform Transition Phase 2	Not Started	Sep-2014
NPRR272	Definition and Participation of Quick Start Generation Resources	Not Started	Oct-2014
NPRR519	Exemption of ERS-Only QSEs from Collateral and Capitalization Requirements	Not Started	Oct-2014
NPRR524	Resource Limits in Providing Ancillary Service	Not Started	Oct-2014
NPRR573	Alignment of PRC Calculation	Not Started	Oct-2014
NPRR581	Add Fast Responding Regulation Service as a Subset of Regulation Service	Not Started	Oct-2014
NPRR588	Clarifications for PV Generation Resources	Not Started	Oct-2014
NPRR615	PVGR Forecasting	Not Started	Oct-2014
SCR771	ERCOT System Change Allowing Independent Master QSE to Represent Split Generation Resources	Not Started	Oct-2014
TBD	CREZ Voltage Control and Coordination - Phase 2	Not Started	Oct-2014