

To the Public Utility Commission of Texas

# ERCOT Wholesale Electricity Market Monthly Report

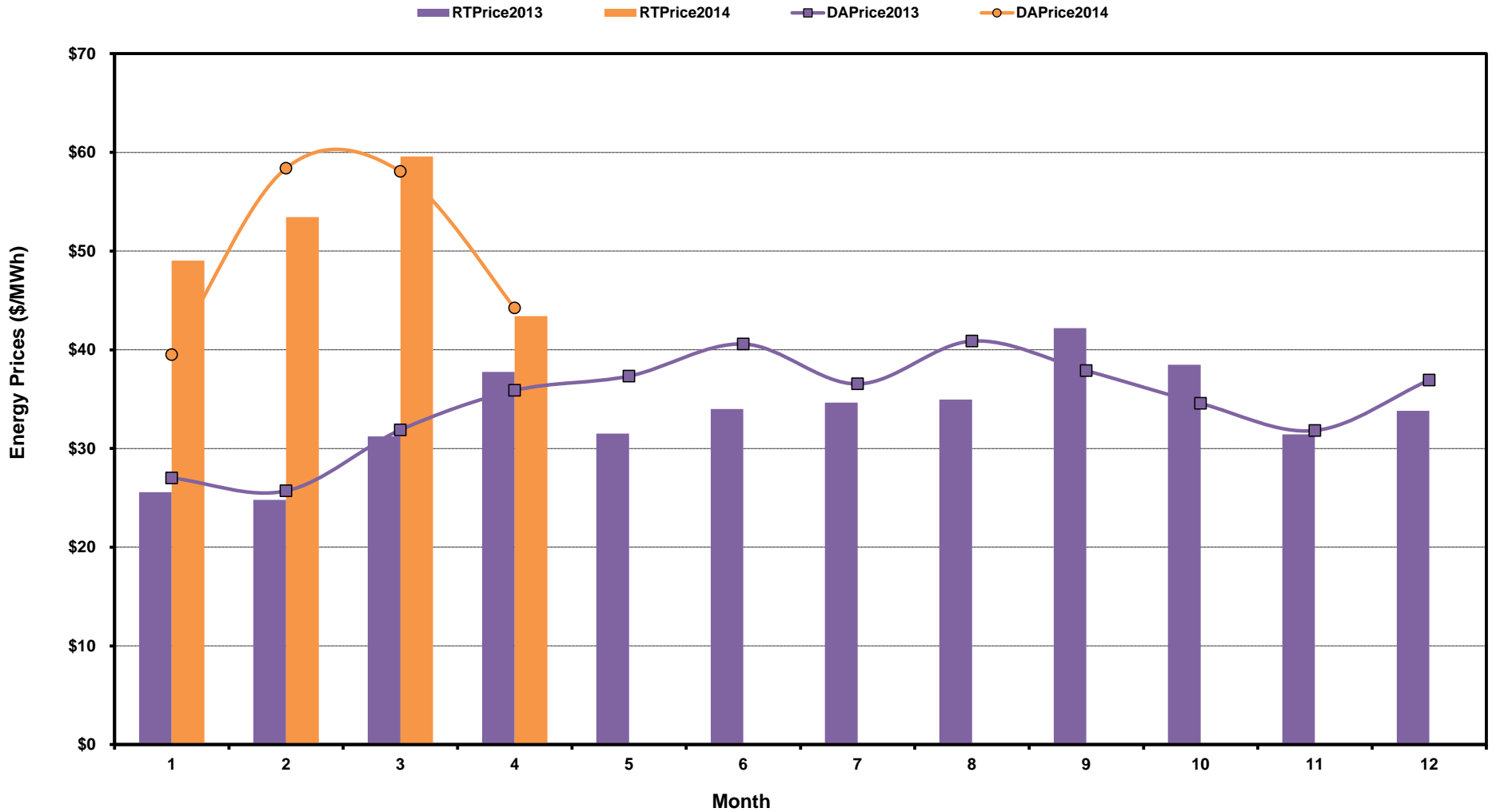
Thursday, May 15, 2014

Potomac Economics, Ltd.  
Independent Market Monitor

<b>1</b>	<b>ERCOT-wide AVG Energy Prices DA vs. RT</b>	<a href="#">chart</a>	<a href="#">table</a>
<b>2</b>	<b>Load Zone Load Statistics</b>	<a href="#">chart</a>	<a href="#">table</a>
<b>3</b>	<b>Load Zone Energy Prices DA vs RT</b>	<a href="#">chart</a>	<a href="#">table</a>
<b>4</b>	<b>ERCOT-wide Implied Heat Rates DA vs RT</b>	<a href="#">chart</a>	<a href="#">table</a>
<b>5</b>	<b>Load Zone Implied Heat Rates DA vs RT</b>	<a href="#">chart</a>	<a href="#">table</a>
<b>6</b>	<b>Ancillary Services Required MW by Month</b>	<a href="#">chart</a>	<a href="#">table</a>
<b>7</b>	<b>Ancillary Services Required MW by Hour Ending</b>	<a href="#">chart</a>	<a href="#">table</a>
<b>8</b>	<b>Ancillary Services Prices by Month</b>	<a href="#">chart</a>	<a href="#">table</a>
<b>9</b>	<b>A/S Costs per MWh of Load by Month</b>	<a href="#">chart</a>	<a href="#">table</a>
<b>10</b>	<b>Ercot-wide Peaker Net Margin</b>	<a href="#">chart</a>	<a href="#">table</a>
<b>11</b>	<b>DA Load Forecast Errors by Hour Ending</b>	<a href="#">chart</a>	<a href="#">table</a>
<b>12</b>	<b>Average Wind Production by Hour Ending</b>	<a href="#">chart</a>	<a href="#">table</a>
<b>13</b>	<b>RT Constraint Rankings</b>		<a href="#">table</a>
	- Top 10 Constraints by Congestion Rent	<a href="#">chart</a>	
	- Top 10 Constraints by Binding Frequency	<a href="#">chart</a>	
<b>14</b>	<b>DA Constraint Rankings</b>		<a href="#">table</a>
	- Top 10 Constraints by Congestion Rent	<a href="#">chart</a>	
	- Top 10 Constraints by Binding Frequency	<a href="#">chart</a>	
<b>15</b>	<b>CRR Auction Prices Rankings</b>		<a href="#">table</a>
	- Top 10 PTP Obligations	<a href="#">chart</a>	
	- Top 10 PTP Options	<a href="#">chart</a>	

# ERCOT-Wide Average Energy Prices DA vs RT

(avg. DA & RT SPPs weighted by Real Time Settlement Loads)



[Home <<](#)

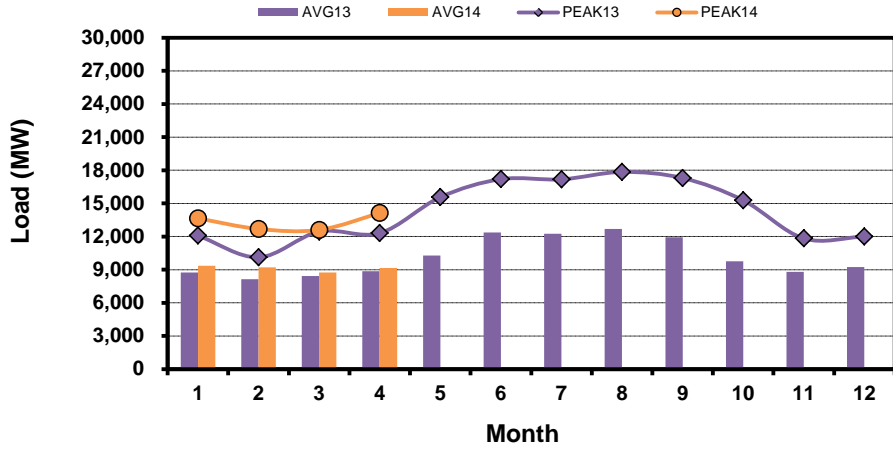
[previous <<](#)

[next >>](#)

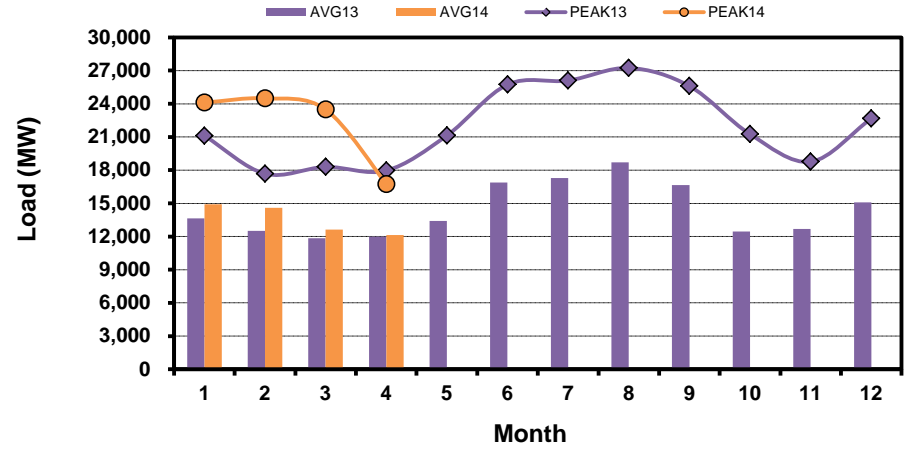
# Load Zone Load Statistics

(Nodal load zone made comparable to zonal system Load Zone definitions\*)

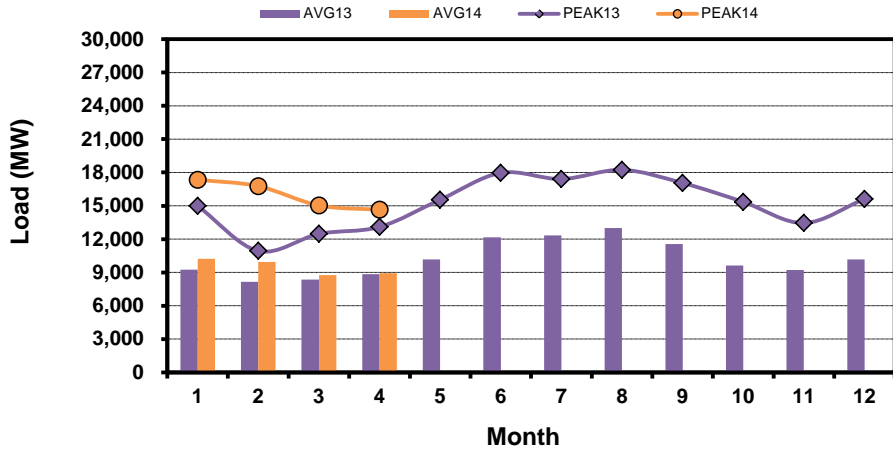
## Houston Zone



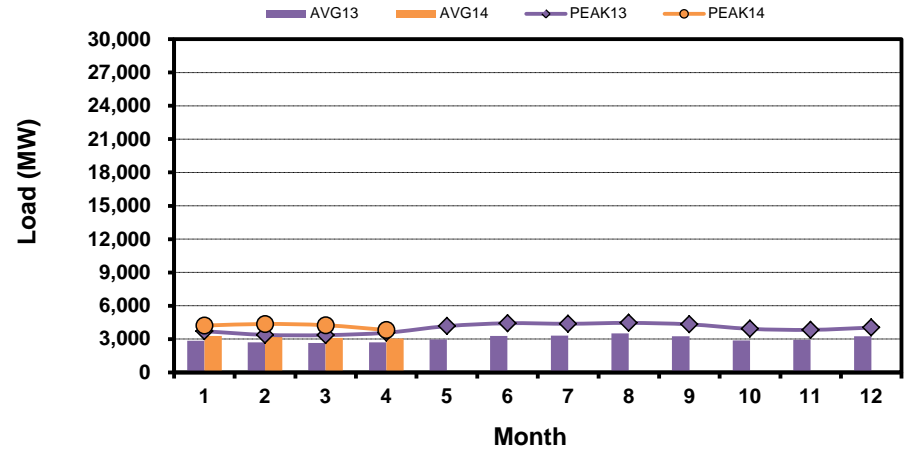
## North Zone



## South Zone



## West Zone



[Home <<](#)

[previous <<](#)

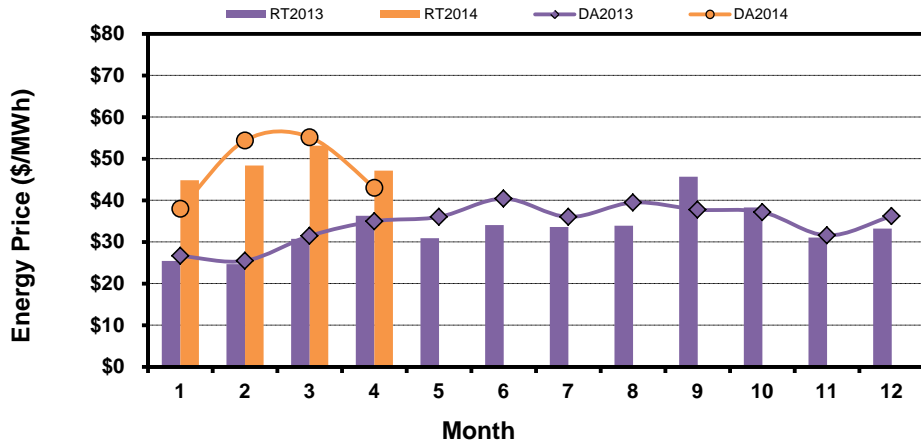
[next >>](#)

Note: \* Zonal load zone definition vs. Nodal comparable load zone definition: LZ\_Houston=LZ\_Houston; LZ\_West=LZ\_West; LZ\_North=(LZ\_North,LZ\_RAYBN); LZ\_South=(LZ\_South,LZ\_CPS,LZ\_AEN,LZ\_LCRA)

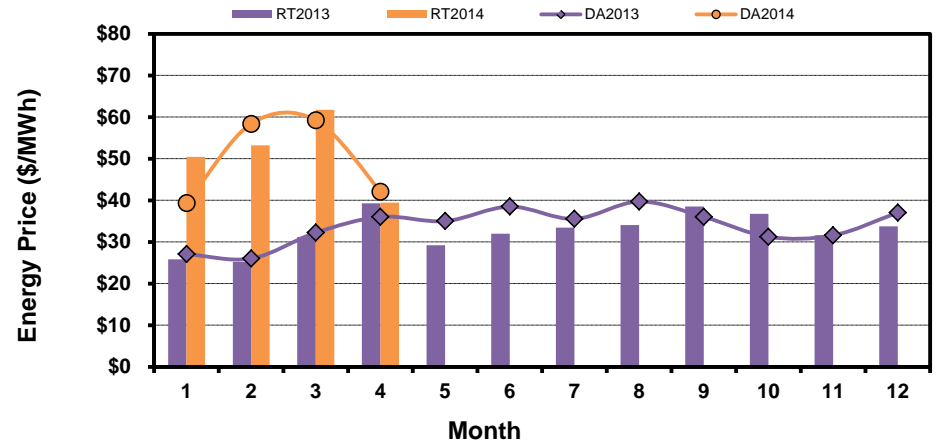
# Load Zone Monthly Average Energy Price DA vs RT

(avg. DA & RT SPPs weighted by Real Time Settlement Loads)  
 (Nodal load zone made comparable to zonal system Load Zone definitions\*)

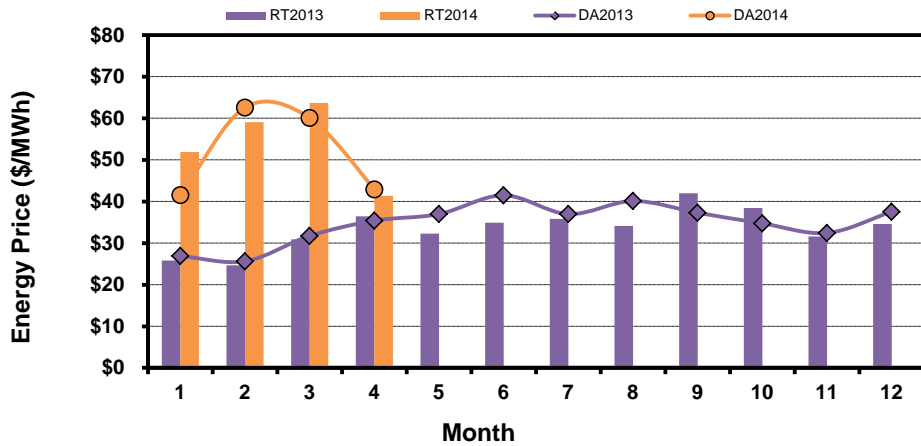
### Houston Zone



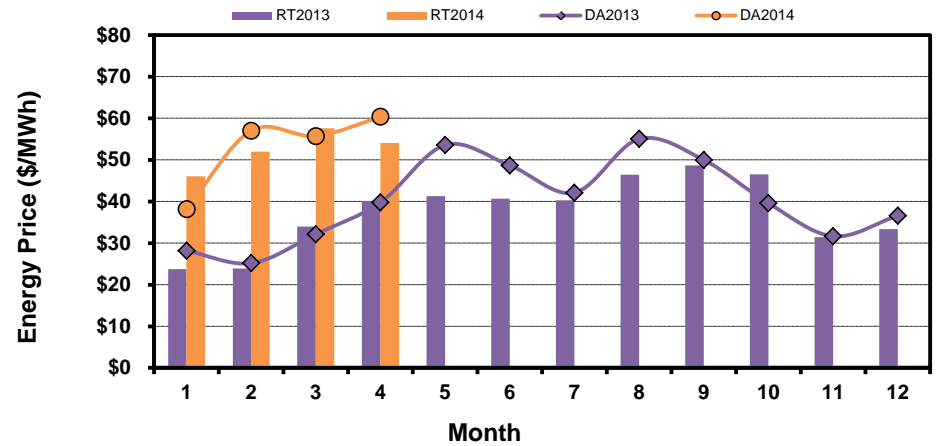
### North Zone



### South Zone



### West Zone



[Home <<](#)

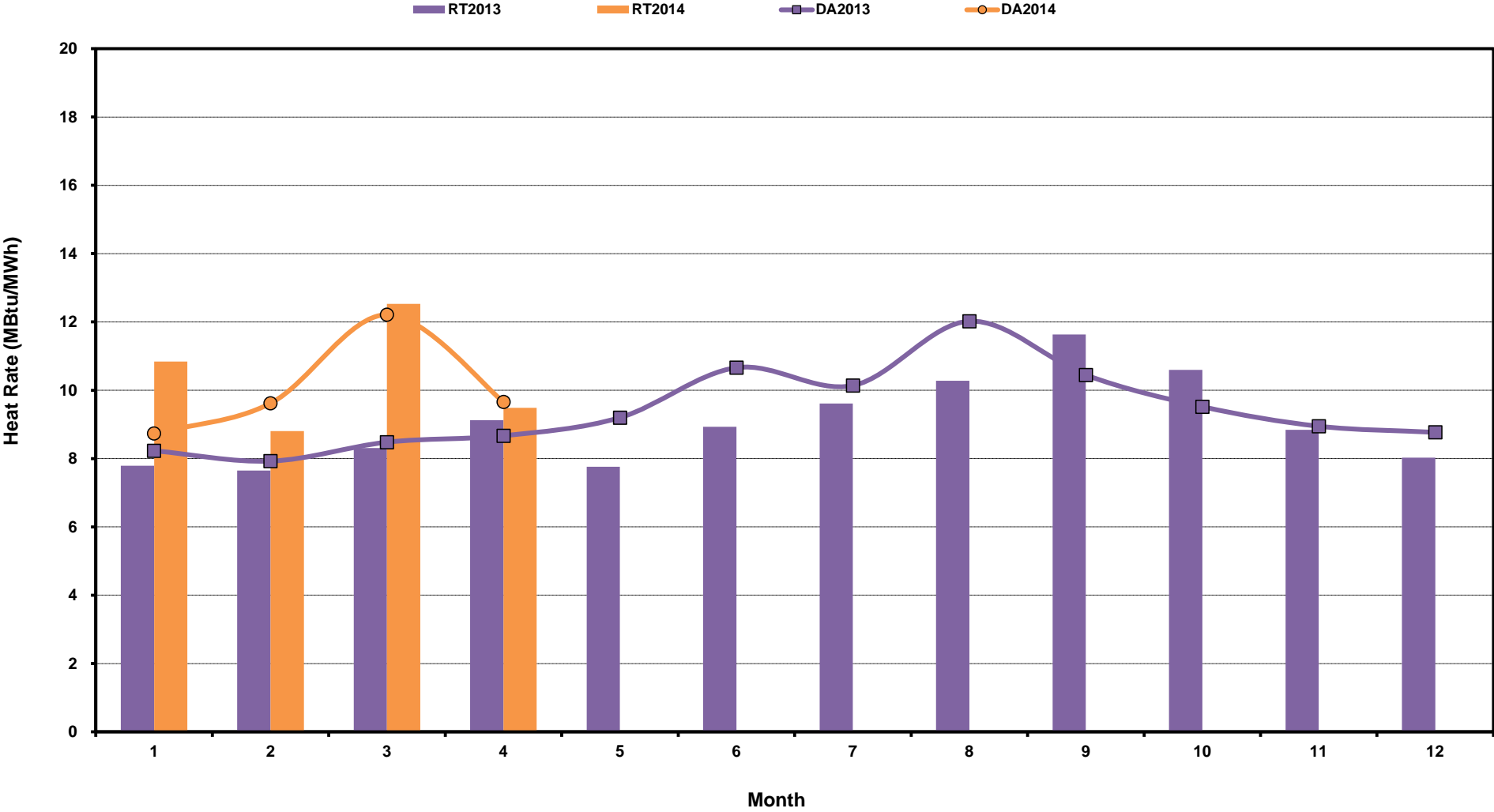
[previous <<](#)

[next >>](#)

**Note:** \* Zonal load zone definition vs. Nodal comparable load zone definition: LZ\_Houston=LZ\_Houston; LZ\_West=LZ\_West; LZ\_North=(LZ\_North,LZ\_RAYBN); LZ\_South=(LZ\_South,LZ\_CPS,LZ\_AEN,LZ\_LCRA)

# ERCOT-Wide Monthly Implied Heat Rate DA vs RT

(avg. heat rates weighted by Real Time Settlement Loads)



[Home <<](#)

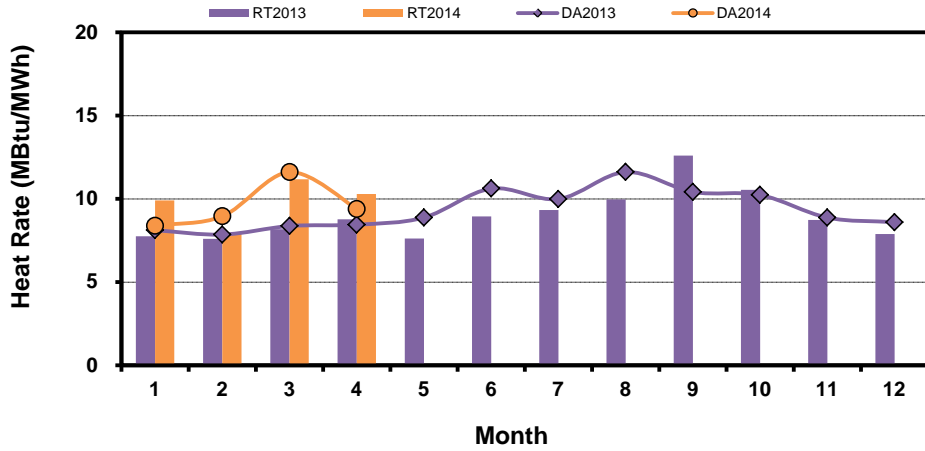
[previous <<](#)

[next >>](#)

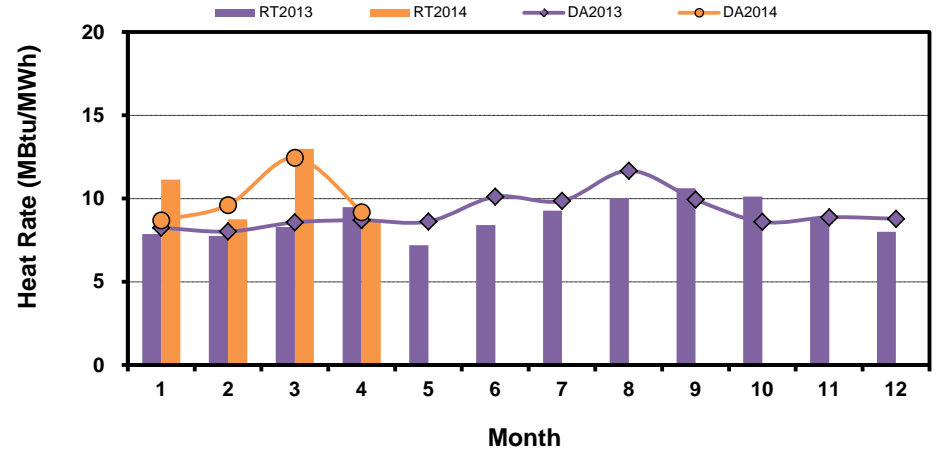
# Load Zone Monthly Implied Heat Rate DA vs RT

(avg. heat rates weighted by Real Time Settlement Loads)  
 (Nodal load zone made comparable to zonal system Load Zone definitions\*)

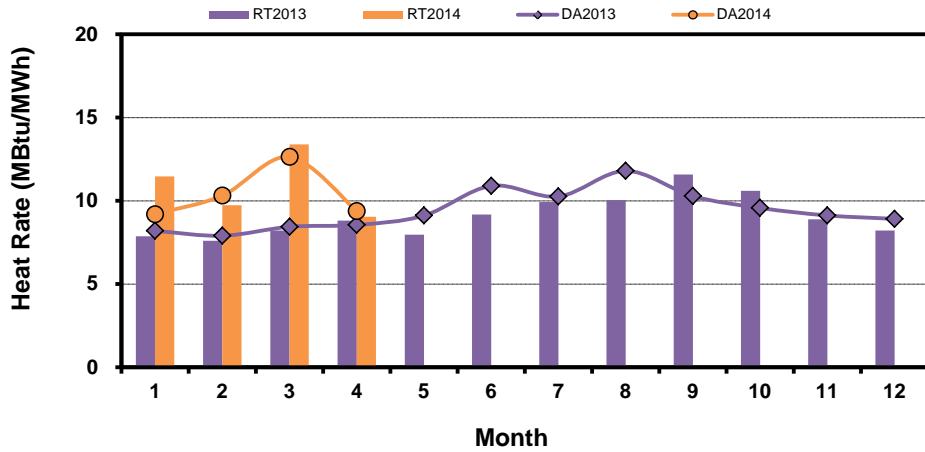
### Houston Zone



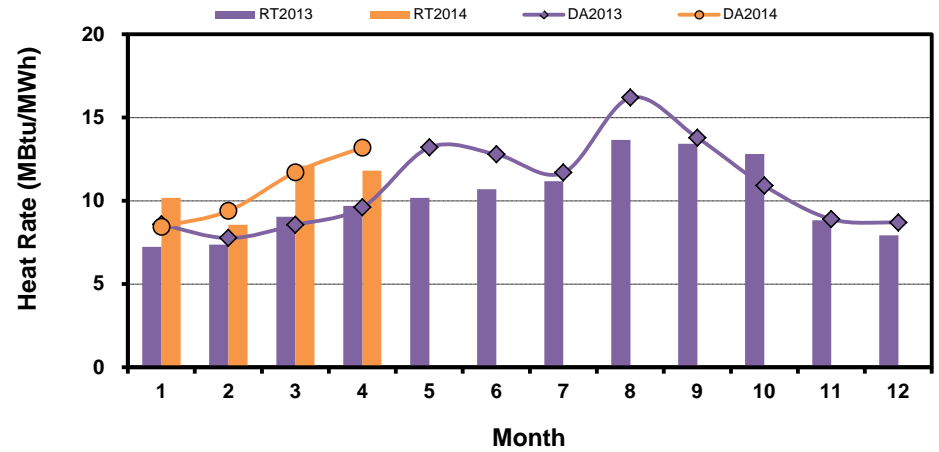
### North Zone



### South Zone



### West Zone



[Home <<](#)

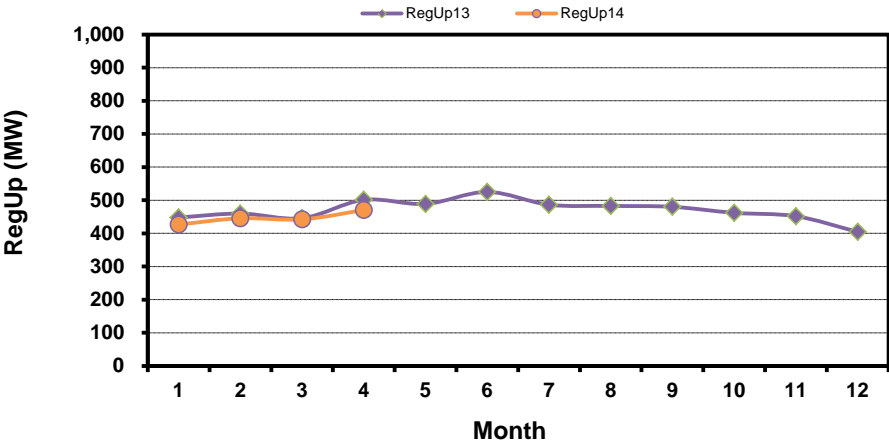
[previous <<](#)

[next >>](#)

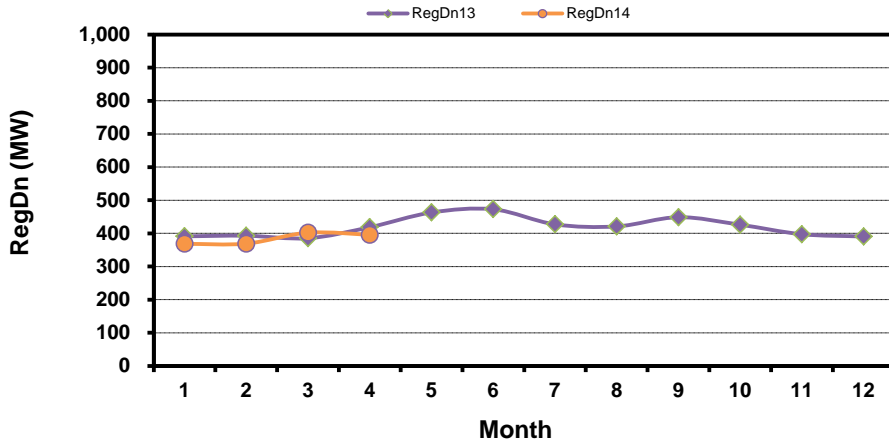
**Note:** \* Zonal load zone definition vs. Nodal comparable load zone definition: LZ\_Houston=LZ\_Houston; LZ\_West=LZ\_West; LZ\_North=(LZ\_North,LZ\_RAYBN); LZ\_South=(LZ\_South,LZ\_CPS,LZ\_AEN,LZ\_LCRA)

# Monthly Average of Ancillary Services Required MW

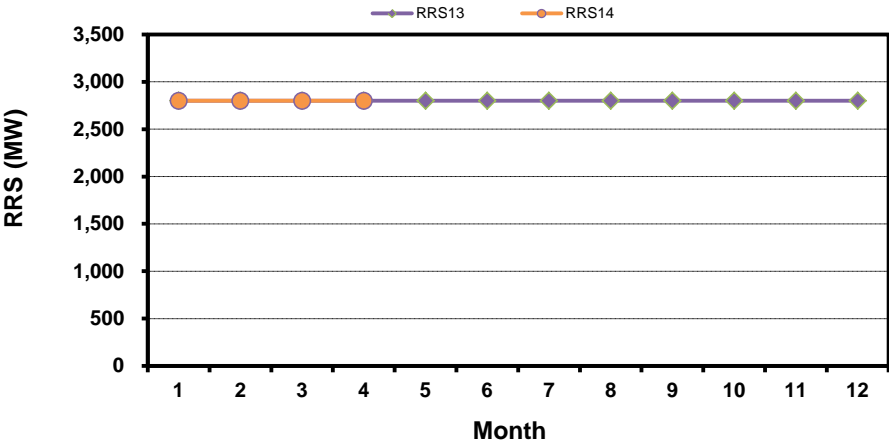
## Regulation Up



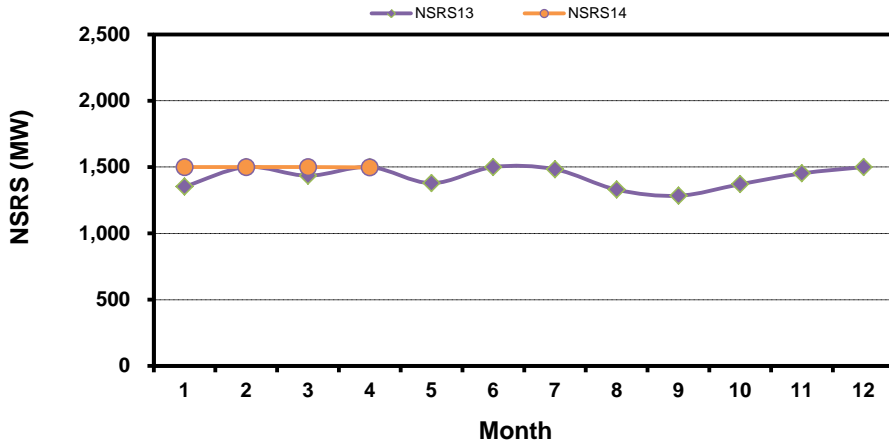
## Regulation Down



## Responsive Reserve



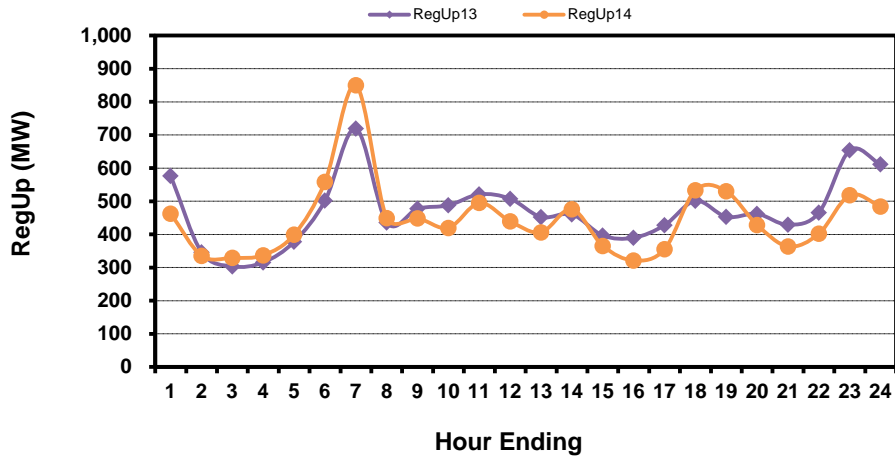
## Non-Spin Reserve



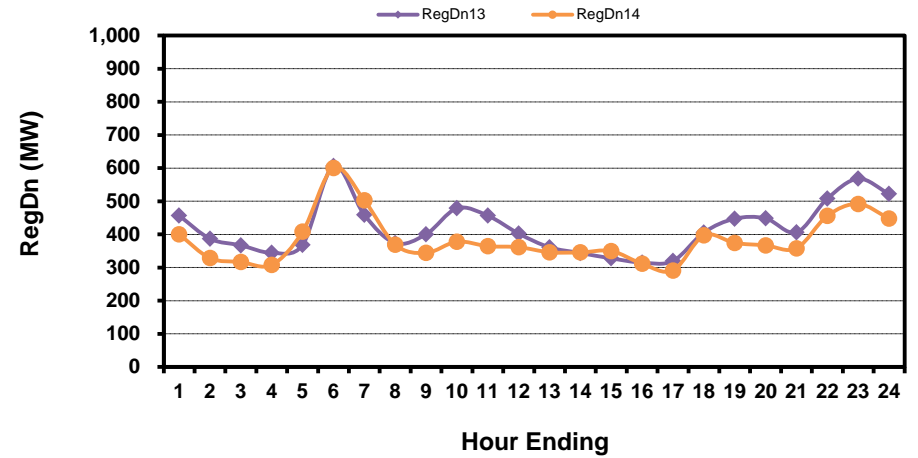
[Home <<](#)   [previous <<](#)   [next >>](#)

# Hourly Average of Ancillary Services Required MW

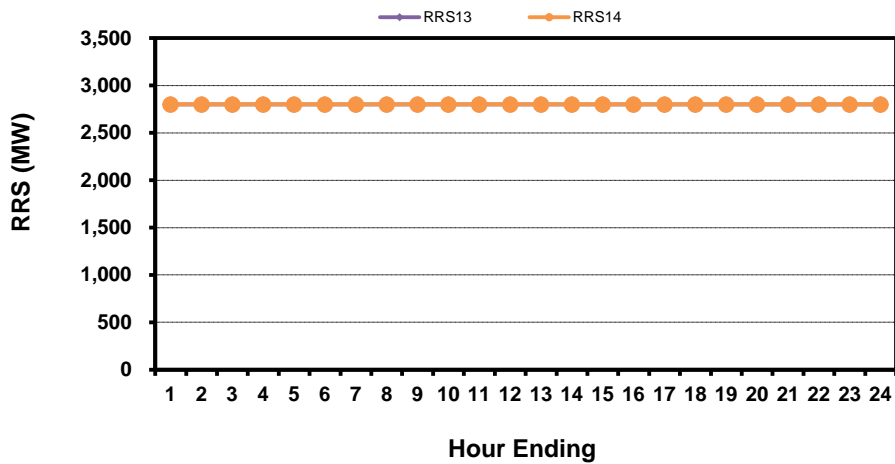
## Regulation Up



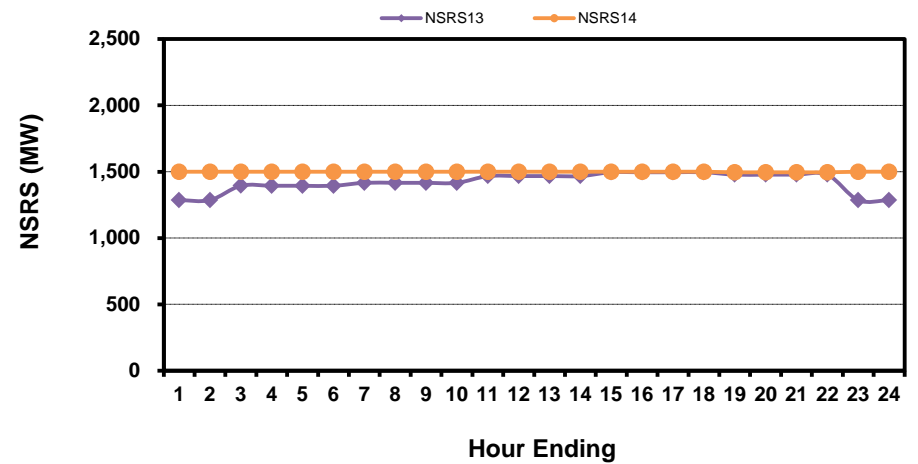
## Regulation Down



## Responsive Reserve



## Non-Spin Reserve



[Home <<](#)

[previous <<](#)

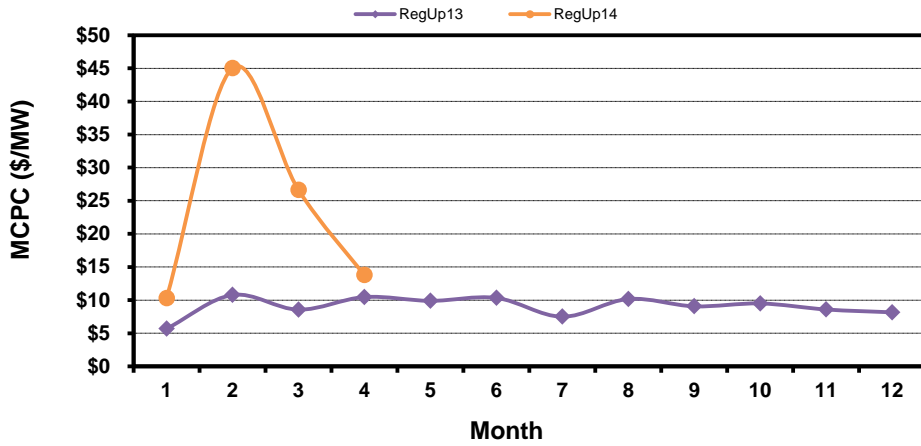
[next >>](#)



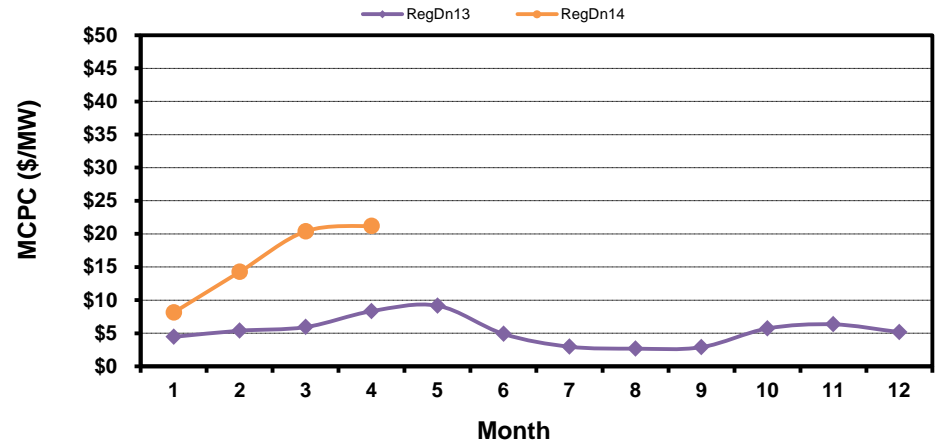
# Monthly Average Ancillary Services Price

(weighted by A/S Quantities Required)

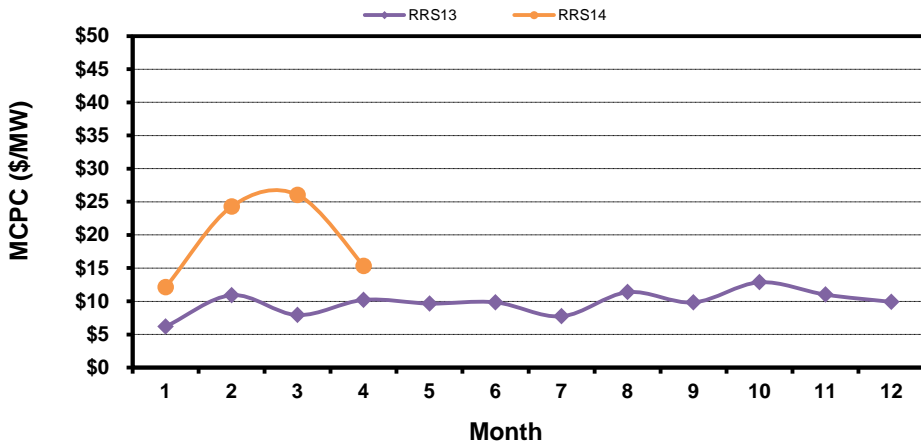
### Regulation Up



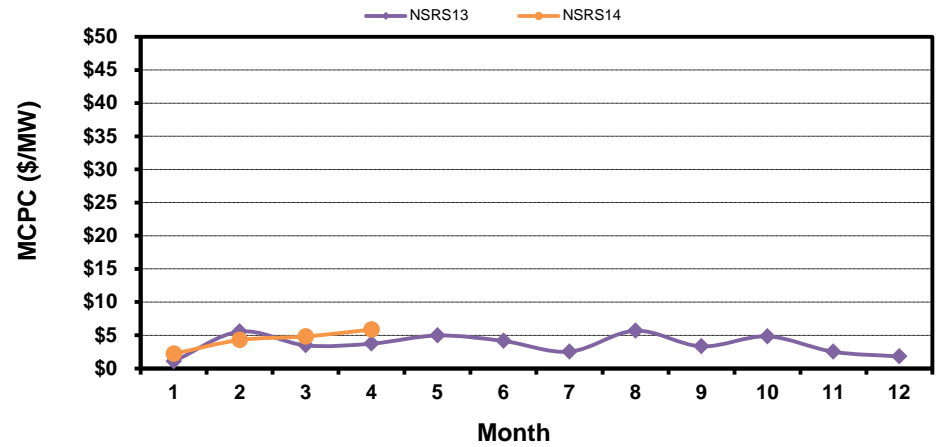
### Regulation Down



### Responsive Reserve



### Non-Spin Reserve

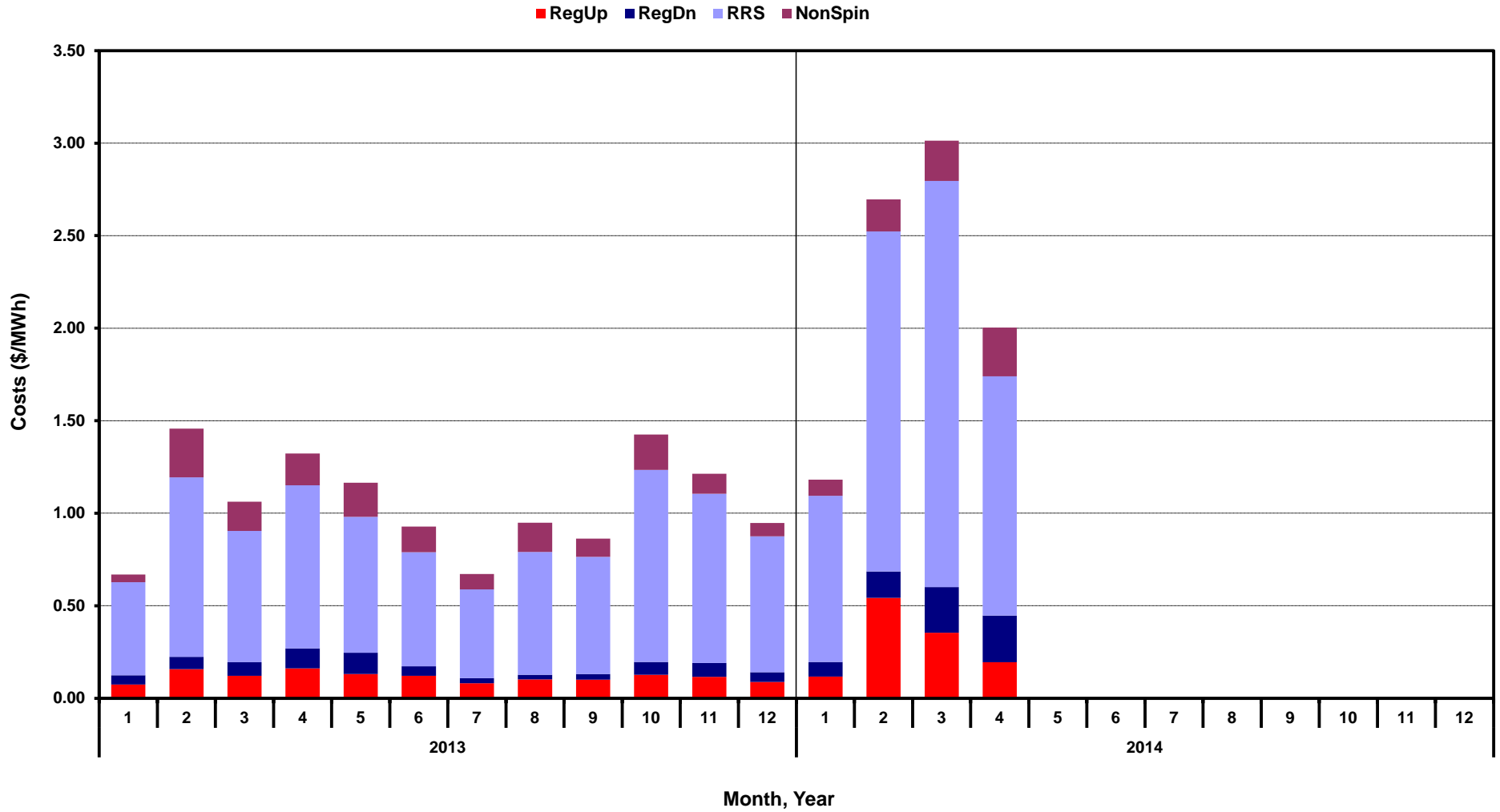


[Home <<](#)

[previous <<](#)

[next >>](#)

# Monthly Average A/S Cost per MWh Load

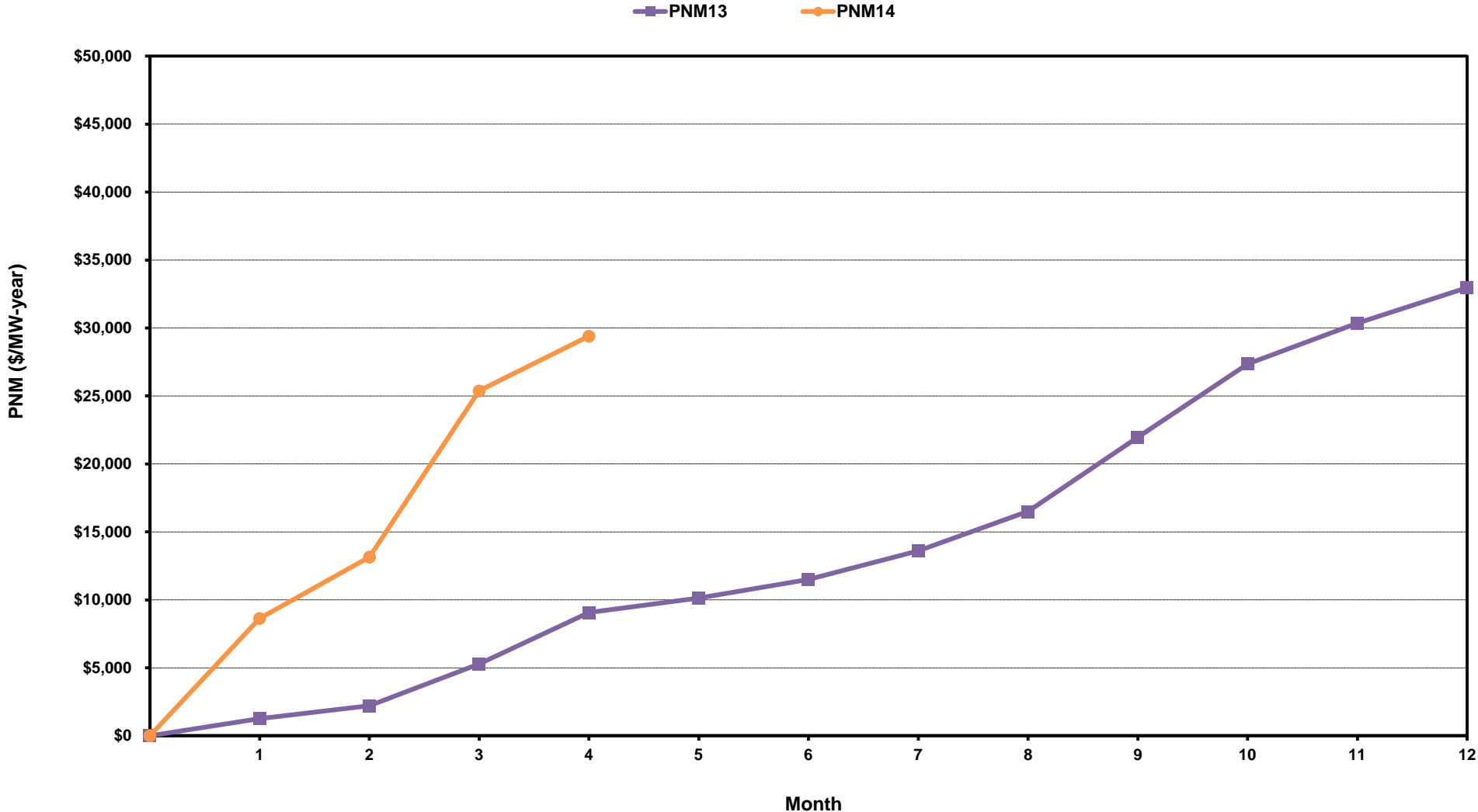


[Home <<](#)

[previous <<](#)

[next >>](#)

# ERCOT-Wide Cumulative Peaker Net Margin

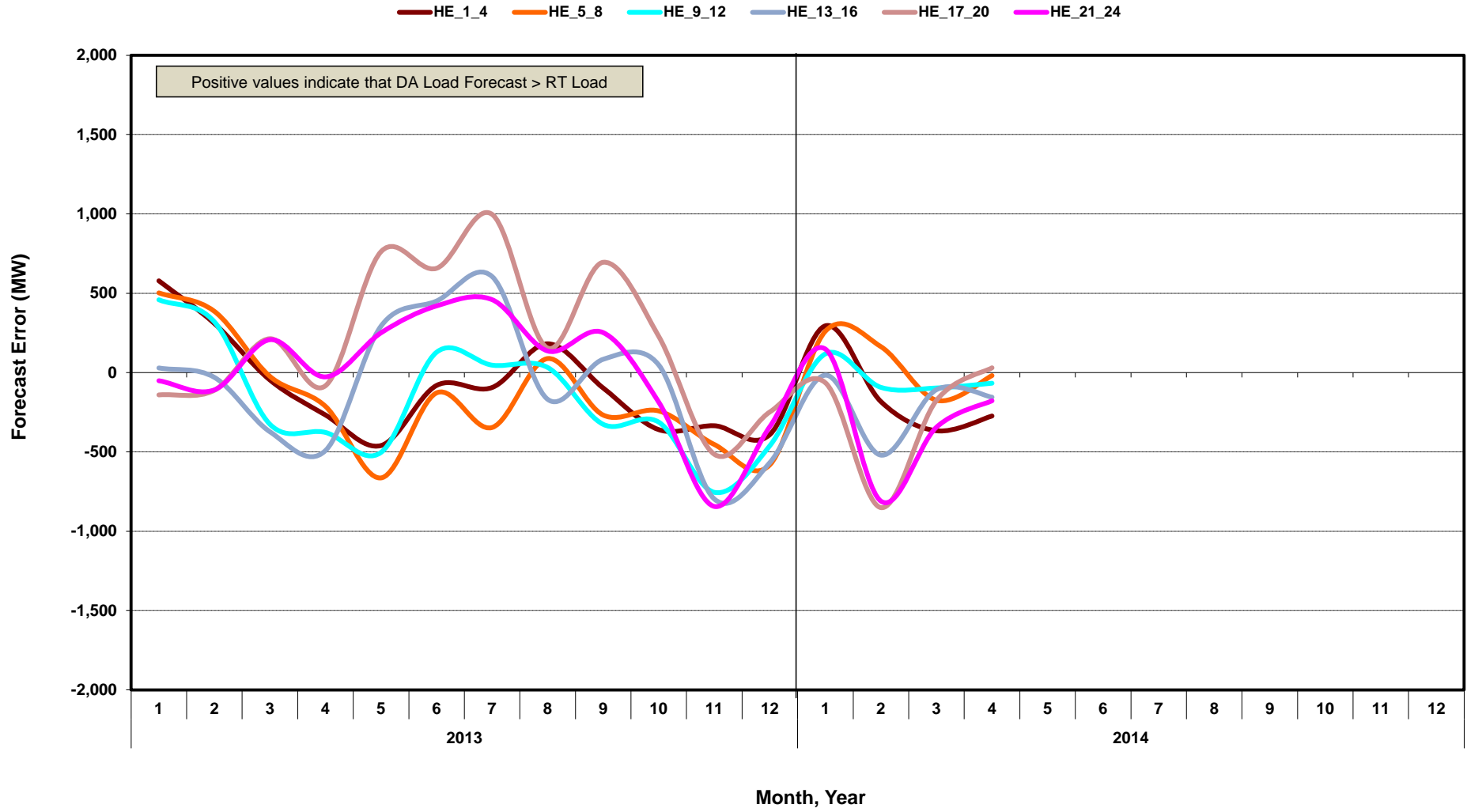


[Home <<](#)

[previous <<](#)

[next >>](#)

# DA vs. RT Load Forecast Error by Hour Ending

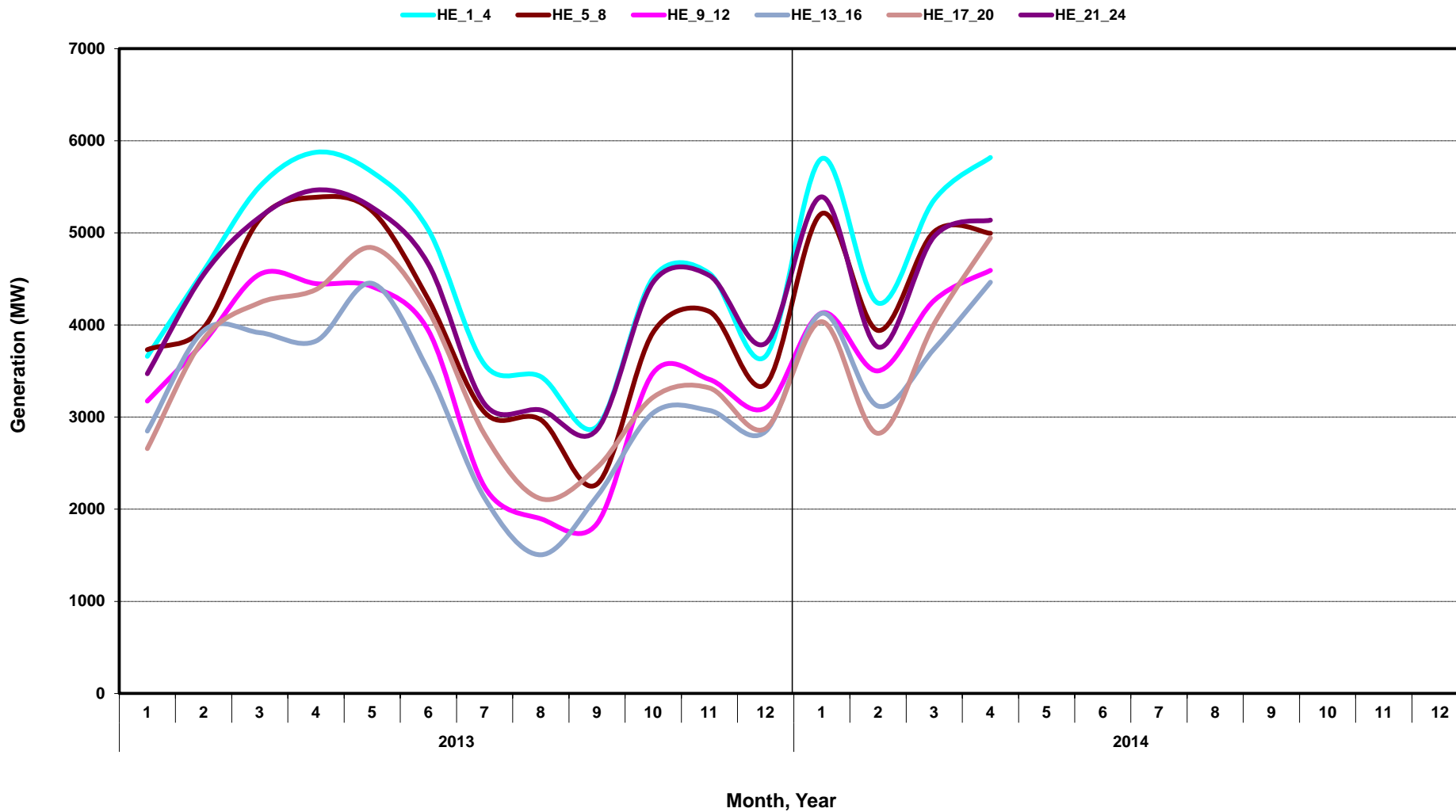


[Home <<](#)

[previous <<](#)

[next >>](#)

# Monthly Average of Wind Generation by Hour Ending



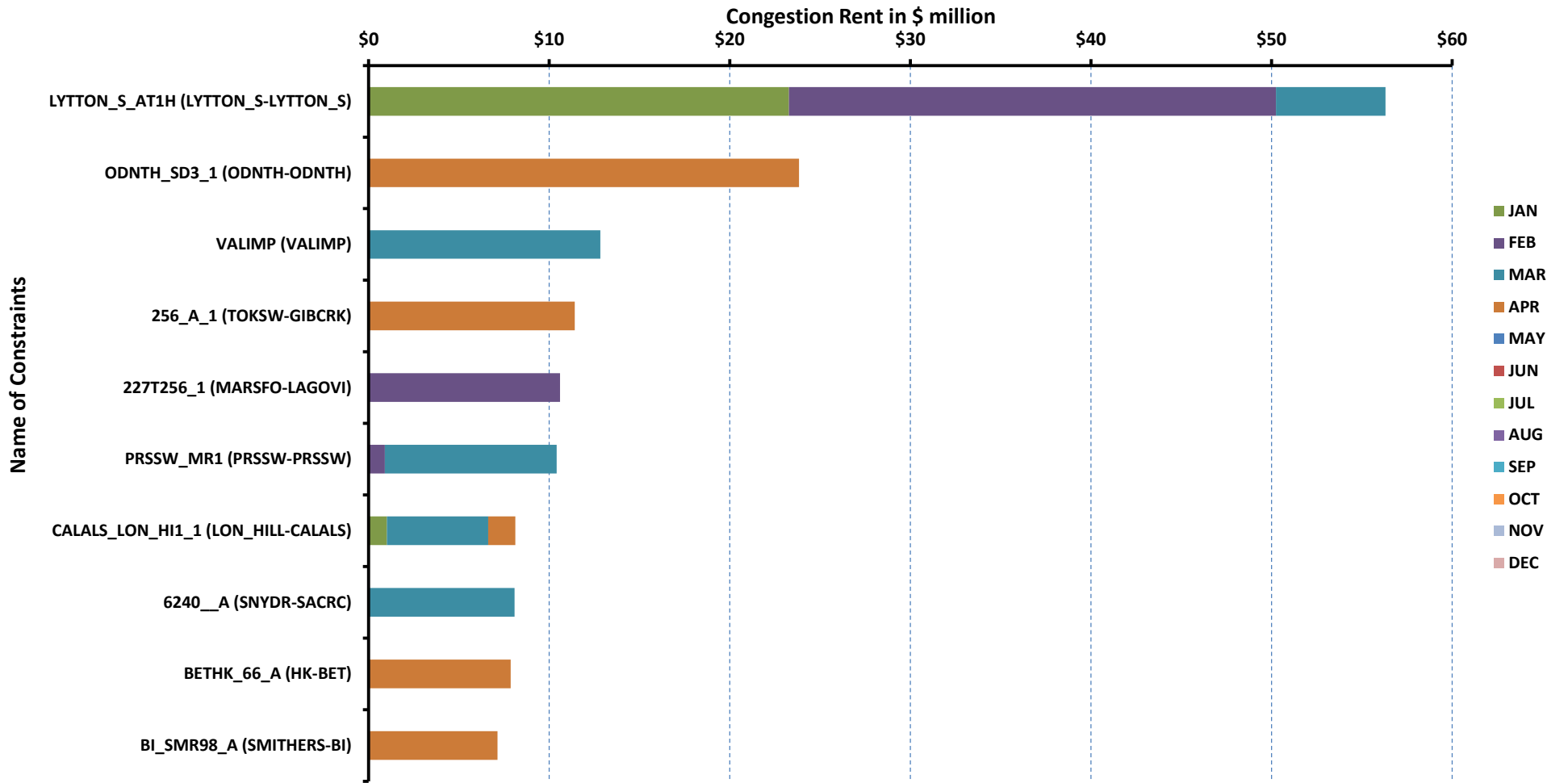
[Home <<](#)

[previous <<](#)

[next >>](#)

# RT Congestion Constraint Rankings - 1

## Top 10 Constraints by Total Congestion Rent



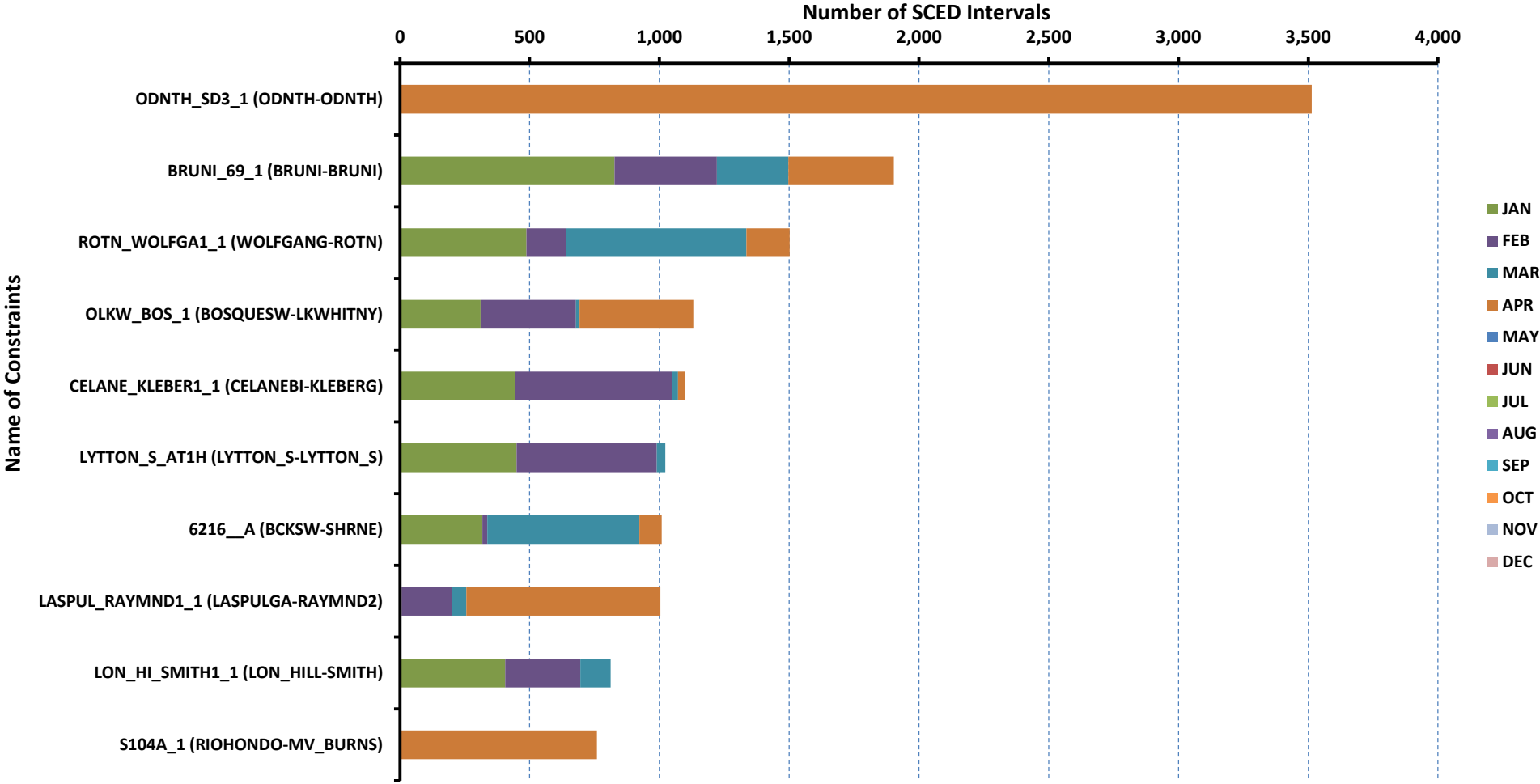
[Home <<](#)

[previous <<](#)

[next >>](#)

# RT Congestion Constraint Rankings - 2

## Top 10 Constraints by Binding Frequency



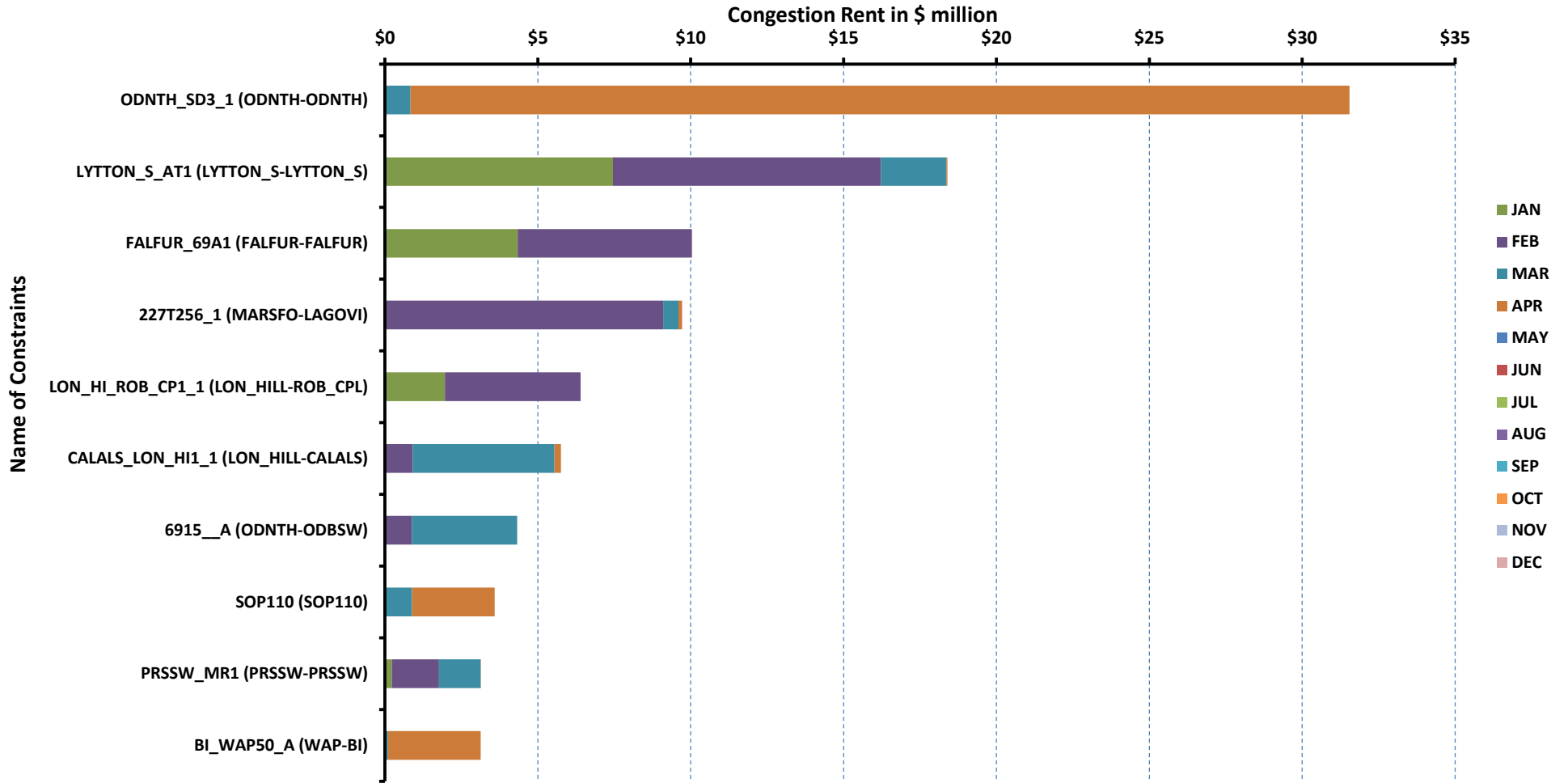
[Home <<](#)

[previous <<](#)

[next >>](#)

# DA Congestion Constraint Rankings - 1

## Top 10 Constraints by Total Congestion Rent



[Home <<](#)

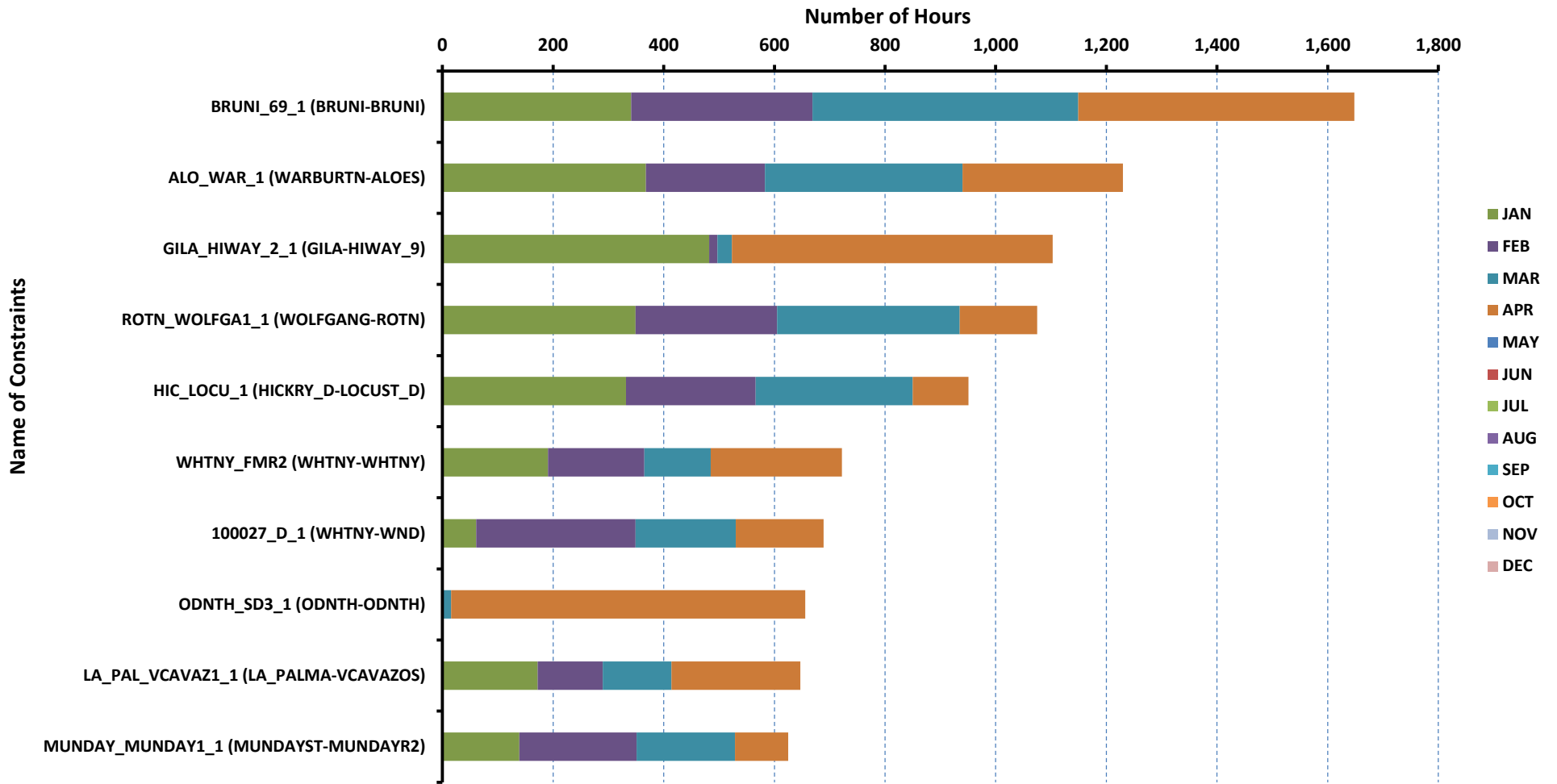
[previous <<](#)

[next >>](#)



# DA Congestion Constraint Rankings - 2

## Top 10 Constraints by Binding Frequency



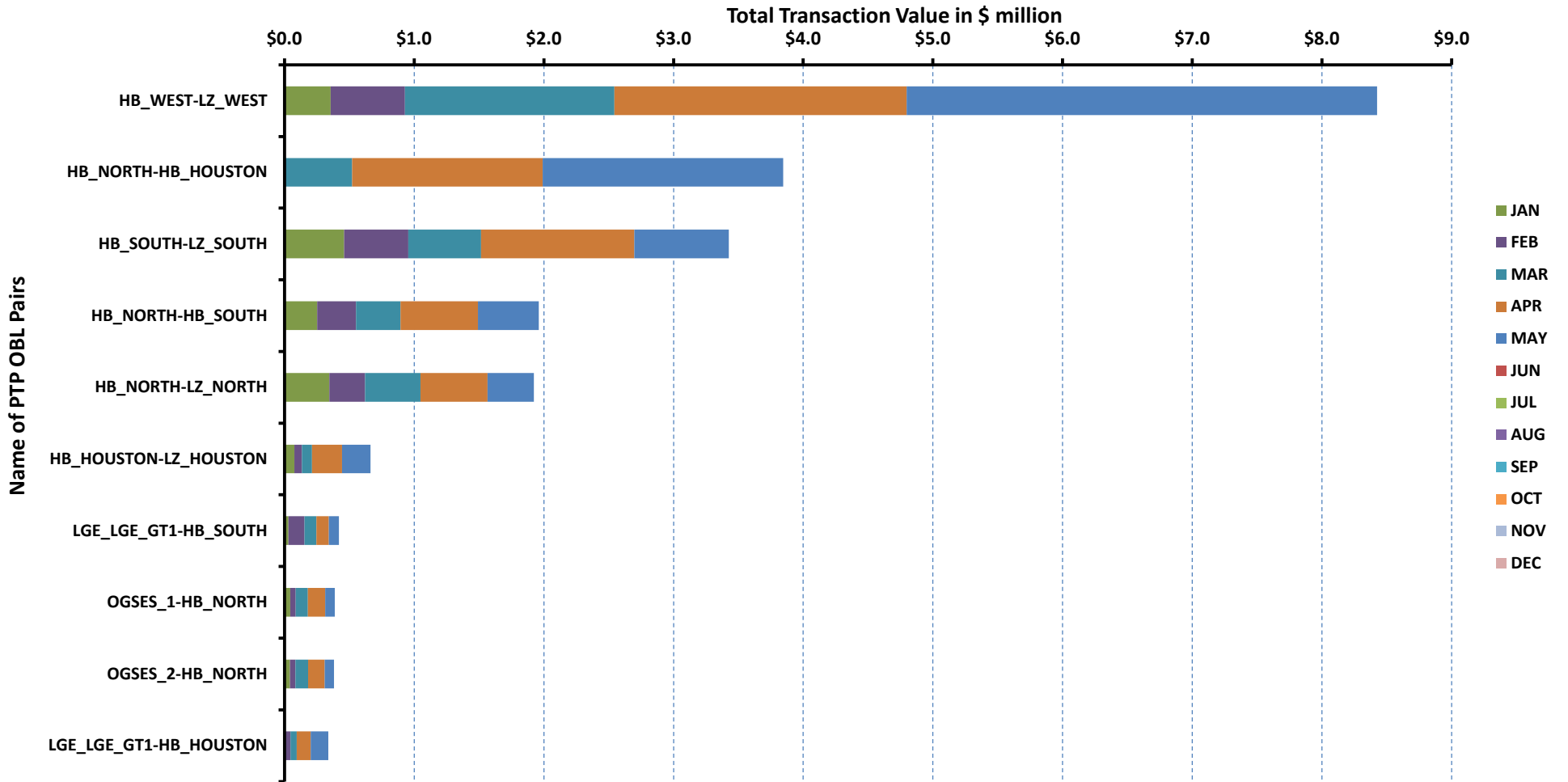
[Home <<](#)

[previous <<](#)

[next >>](#)

# Top 10 CRR Pairs Ranked by Monthly Auction Values - 1

## Top 10 PTP Obligations by Total Transaction Value



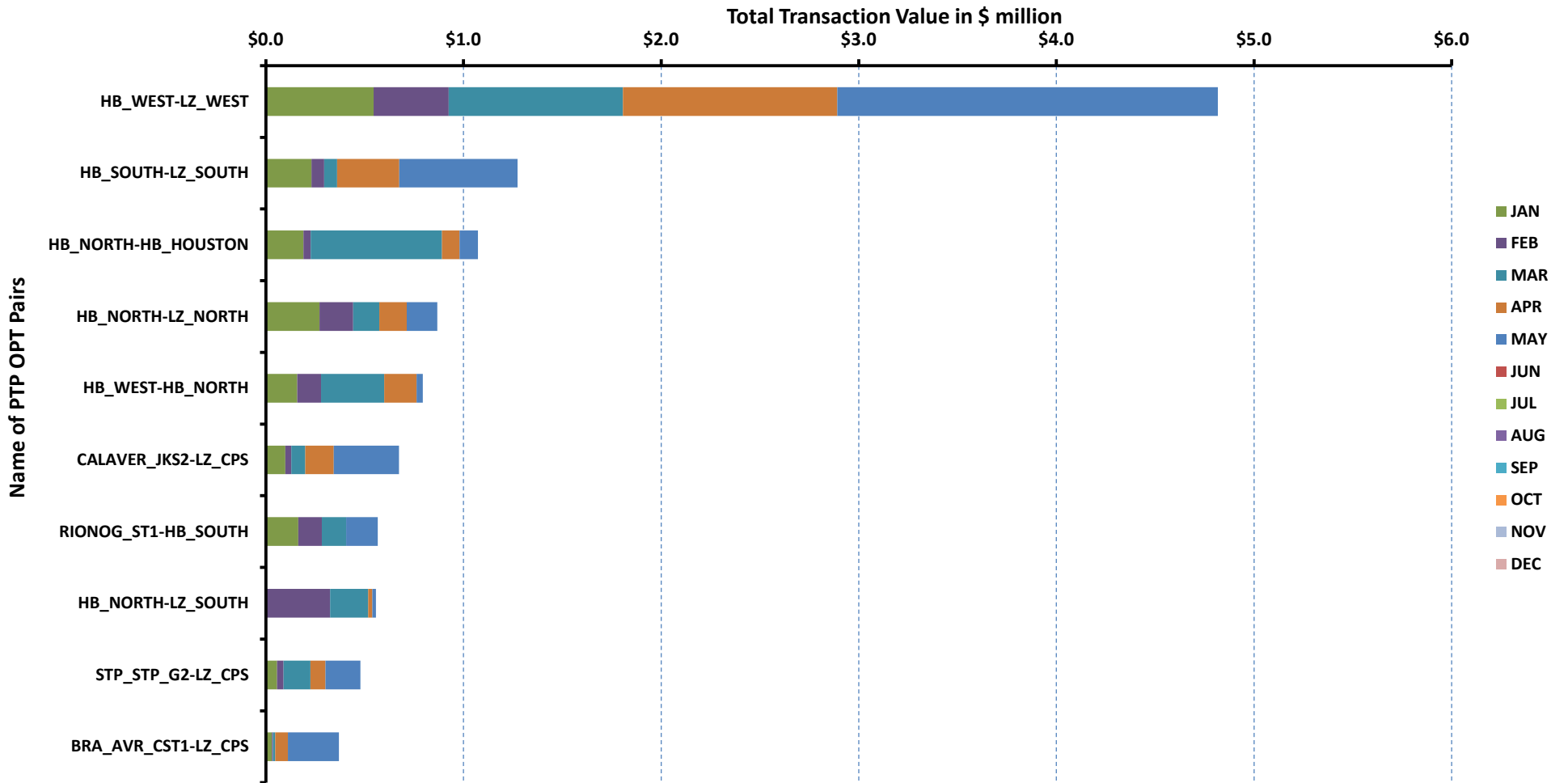
[Home <<](#)

[previous <<](#)

[next >>](#)

# Top 10 CRR Pairs Ranked by Monthly Auction Values - 2

## Top 10 PTP Options by Total Transaction Value



[Home <<](#)

[previous <<](#)

year	month	dam_spp	rtm_spp
2013	1	27.01	25.57
2013	2	25.70	24.80
2013	3	31.88	31.24
2013	4	35.88	37.75
2013	5	37.33	31.50
2013	6	40.59	34.00
2013	7	36.54	34.64
2013	8	40.88	34.95
2013	9	37.88	42.19
2013	10	34.57	38.47
2013	11	31.82	31.44
2013	12	36.94	33.83
2014	1	39.50	49.04
2014	2	58.39	53.46
2014	3	58.07	59.59
2014	4	44.23	43.42

[Home](#)





year	month	gasprice	rtm_spp	HR_rtm	dam_spp	HR_dam
2013	1	\$3.28	\$25.57	7.79	\$27.01	8.23
2013	2	\$3.24	\$24.80	7.65	\$25.70	7.93
2013	3	\$3.76	\$31.24	8.31	\$31.88	8.48
2013	4	\$4.14	\$37.75	9.12	\$35.88	8.67
2013	5	\$4.06	\$31.50	7.76	\$37.33	9.20
2013	6	\$3.81	\$34.00	8.93	\$40.59	10.66
2013	7	\$3.60	\$34.64	9.61	\$36.54	10.14
2013	8	\$3.40	\$34.95	10.28	\$40.88	12.02
2013	9	\$3.63	\$42.19	11.64	\$37.88	10.45
2013	10	\$3.63	\$38.47	10.59	\$34.57	9.52
2013	11	\$3.56	\$31.44	8.84	\$31.82	8.95
2013	12	\$4.21	\$33.83	8.03	\$36.94	8.77
2014	1	\$4.52	\$49.04	10.84	\$39.50	8.73
2014	2	\$6.07	\$53.46	8.81	\$58.39	9.62
2014	3	\$4.75	\$59.59	12.53	\$58.07	12.21
2014	4	\$4.58	\$43.42	9.49	\$44.23	9.66

[Home](#)







year	ELIVERY HOUR	ASMW_REGDN	ASMW_NSPIN	ASMW_RRS	ASMW_REGUP
2013	1	457	1,286	2,800	576
2013	2	387	1,286	2,800	346
2013	3	367	1,394	2,800	303
2013	4	344	1,394	2,800	316
2013	5	368	1,394	2,800	378
2013	6	606	1,394	2,800	502
2013	7	459	1,416	2,800	719
2013	8	374	1,416	2,800	436
2013	9	400	1,416	2,800	478
2013	10	479	1,416	2,800	488
2013	11	456	1,467	2,800	521
2013	12	402	1,467	2,800	508
2013	13	361	1,467	2,800	452
2013	14	344	1,467	2,800	460
2013	15	328	1,496	2,800	397
2013	16	315	1,496	2,800	390
2013	17	320	1,496	2,800	428
2013	18	406	1,496	2,800	501
2013	19	447	1,478	2,800	453
2013	20	448	1,478	2,800	462
2013	21	406	1,478	2,800	429
2013	22	508	1,478	2,800	465
2013	23	568	1,286	2,800	653
2013	24	522	1,286	2,800	611
2014	1	400	1,500	2,800	462
2014	2	328	1,500	2,800	336
2014	3	317	1,500	2,800	329
2014	4	308	1,500	2,800	337
2014	5	408	1,500	2,800	399
2014	6	600	1,500	2,800	559
2014	7	503	1,500	2,800	850
2014	8	369	1,500	2,800	449
2014	9	344	1,500	2,800	449
2014	10	378	1,500	2,800	420
2014	11	364	1,500	2,800	495
2014	12	361	1,500	2,800	439
2014	13	346	1,500	2,800	406
2014	14	346	1,500	2,800	476
2014	15	350	1,500	2,800	365
2014	16	311	1,500	2,800	321
2014	17	291	1,500	2,800	355
2014	18	397	1,500	2,800	533
2014	19	374	1,496	2,800	530
2014	20	367	1,496	2,800	429
2014	21	358	1,496	2,800	364
2014	22	456	1,496	2,800	402
2014	23	492	1,500	2,800	518
2014	24	448	1,500	2,800	484

Home

year	month	MCPC REGDN	MCPC NSPIN	MCPC RRS	MCPC REGUP
2013	1	\$4.46	\$1.06	\$6.18	\$5.69
	2	\$5.40	\$5.55	\$10.92	\$10.79
	3	\$5.94	\$3.47	\$7.92	\$8.57
	4	\$8.34	\$3.73	\$10.21	\$10.47
	5	\$9.17	\$4.95	\$9.66	\$9.90
	6	\$4.91	\$4.13	\$9.84	\$10.34
	7	\$2.98	\$2.52	\$7.73	\$7.50
	8	\$2.69	\$5.68	\$11.37	\$10.18
	9	\$2.91	\$3.32	\$9.83	\$9.08
	10	\$5.73	\$4.83	\$12.87	\$9.51
	11	\$6.35	\$2.51	\$11.00	\$8.60
	12	\$5.19	\$1.80	\$9.90	\$8.17
2014	1	\$8.15	\$2.20	\$12.12	\$10.32
	2	\$14.28	\$4.28	\$24.28	\$45.03
	3	\$20.40	\$4.81	\$26.05	\$26.63
	4	\$21.21	\$5.86	\$15.35	\$13.80

[Home](#)

year	month	AScost REGDN	AScost NSPIN	AScost RRS	AScost REGUP
2013	1	\$0.05	\$0.04	\$0.50	\$0.07
	2	\$0.07	\$0.26	\$0.97	\$0.16
	3	\$0.07	\$0.16	\$0.71	\$0.12
	4	\$0.11	\$0.17	\$0.88	\$0.16
	5	\$0.12	\$0.19	\$0.73	\$0.13
	6	\$0.05	\$0.14	\$0.62	\$0.12
	7	\$0.03	\$0.08	\$0.48	\$0.08
	8	\$0.02	\$0.16	\$0.66	\$0.10
	9	\$0.03	\$0.10	\$0.63	\$0.10
	10	\$0.07	\$0.19	\$1.04	\$0.13
	11	\$0.07	\$0.11	\$0.92	\$0.12
	12	\$0.05	\$0.07	\$0.73	\$0.09
2014	1	\$0.08	\$0.09	\$0.90	\$0.12
	2	\$0.14	\$0.17	\$1.84	\$0.54
	3	\$0.25	\$0.22	\$2.19	\$0.35
	4	\$0.25	\$0.26	\$1.29	\$0.20
	5				
	6				
	7				
	8				
	9				
	10				
	11				
	12				

Home

year	month	pnm	pnm_accum
2013		\$0.00	\$0.00
2013	1	\$1,260.48	\$1,260.48
2013	2	\$942.97	\$2,203.45
2013	3	\$3,085.66	\$5,289.11
2013	4	\$3,771.65	\$9,060.76
2013	5	\$1,071.87	\$10,132.63
2013	6	\$1,360.51	\$11,493.14
2013	7	\$2,105.10	\$13,598.24
2013	8	\$2,906.63	\$16,504.87
2013	9	\$5,458.77	\$21,963.64
2013	10	\$5,399.53	\$27,363.17
2013	11	\$2,987.82	\$30,350.99
2013	12	\$2,618.14	\$32,969.13
2014		\$0.00	\$0.00
2014	1	\$8,628.41	\$8,628.41
2014	2	\$4,513.33	\$13,141.74
2014	3	\$12,232.21	\$25,373.95
2014	4	\$4,024.62	\$29,398.57

[Home](#)

year	month	HE 1 4	HE 13 16	HE 17 20	HE 21 24	HE 5 8	HE 9 12
2013	1	579	29	-141	-51	503	459
	2	310	-30	-111	-109	386	320
	3	-47	-373	214	208	-24	-326
	4	-267	-491	-83	-27	-213	-377
	5	-460	293	763	251	-664	-503
	6	-81	451	658	421	-128	129
	7	-94	606	997	460	-346	47
	8	182	-168	155	136	89	32
	9	-97	84	695	252	-268	-326
	10	-360	48	228	-187	-242	-312
	11	-335	-797	-515	-844	-453	-755
	12	-390	-567	-248	-340	-581	-461
2014	1	295	-16	-64	148	261	118
	2	-183	-520	-851	-810	163	-93
	3	-366	-107	-175	-344	-174	-97
	4	-273	-155	30	-177	-19	-67
	5						
	6						
	7						
	8						
	9						
	10						
	11						
	12						

[Home](#)

year	month	HE 1 4	HE 13 16	HE 17 20	HE 21 24	HE 5 8	HE 9 12
2013	1	3660	2849	2659	3471	3733	3174
	2	4586	3937	3846	4547	3968	3812
	3	5504	3917	4243	5172	5149	4551
	4	5876	3826	4385	5466	5387	4449
	5	5660	4452	4840	5277	5237	4417
	6	5035	3504	4155	4661	4278	3940
	7	3570	2122	2812	3143	3052	2242
	8	3440	1505	2114	3077	2972	1897
	9	2898	2140	2453	2863	2273	1843
	10	4514	3046	3216	4466	3921	3481
	11	4561	3073	3317	4537	4146	3410
	12	3661	2845	2876	3802	3355	3102
2014	1	5808	4127	4036	5391	5211	4131
	2	4238	3120	2824	3762	3941	3502
	3	5359	3742	4014	4962	5013	4267
	4	5819	4465	4946	5139	4996	4593
	5						
	6						
	7						
	8						
	9						
	10						
	11						
	12						

[Home](#)

category	year	item	rankvar	rank	JAN	FEB	MAR	APR	MAY	JUN	JUL	AUG	SEP	OCT	NOV	DEC
FREQ_EXIST	2014	ODNTH_SD3_1 (ODNTH-ODNTH)	3513	1	0	0	0	3513	0	0	0	0	0	0	0	0
FREQ_EXIST	2014	BRUNI_69_1 (BRUNI-BRUNI)	1903	2	827	394	276	406	0	0	0	0	0	0	0	0
FREQ_EXIST	2014	ROTN_WOLFGA1_1 (WOLFGANG-ROTN)	1502	3	488	151	696	167	0	0	0	0	0	0	0	0
FREQ_EXIST	2014	OLKW_BOS_1 (BOSQUESW-LKWHITNY)	1130	4	311	367	14	438	0	0	0	0	0	0	0	0
FREQ_EXIST	2014	CELANE_KLEBER1_1 (CELANEBI-KLEBERG)	1100	5	445	603	24	28	0	0	0	0	0	0	0	0
FREQ_EXIST	2014	LYTTON_S_AT1H (LYTTON_S-LYTTON_S)	1023	6	450	540	33	0	0	0	0	0	0	0	0	0
FREQ_EXIST	2014	6216_A (BCKSW-SHRNE)	1009	7	318	19	586	86	0	0	0	0	0	0	0	0
FREQ_EXIST	2014	LASPUL_RAYMND1_1 (LASPULGA-RAYMND2)	1004	8	6	195	55	748	0	0	0	0	0	0	0	0
FREQ_EXIST	2014	LON_HI_SMITH1_1 (LON_HILL-SMITH)	812	9	406	289	117	0	0	0	0	0	0	0	0	0
FREQ_EXIST	2014	S104A_1 (RIOHONDO-MV_BURNS)	759	10	0	0	0	759	0	0	0	0	0	0	0	0
TOP10_RENT	2014	LYTTON_S_AT1H (LYTTON_S-LYTTON_S)	56.31	1	23.272	26.968	6.075	0.000	0.000	0.000	0.000	0.000	0.000	0.000	0.000	0.000
TOP10_RENT	2014	ODNTH_SD3_1 (ODNTH-ODNTH)	23.84	2	0.000	0.000	0.000	23.836	0.000	0.000	0.000	0.000	0.000	0.000	0.000	0.000
TOP10_RENT	2014	VALIMP (VALIMP)	12.83	3	0.000	0.030	12.798	0.000	0.000	0.000	0.000	0.000	0.000	0.000	0.000	0.000
TOP10_RENT	2014	256_A_1 (TOKSW-GIBCRK)	11.41	4	0.000	0.000	0.000	11.409	0.000	0.000	0.000	0.000	0.000	0.000	0.000	0.000
TOP10_RENT	2014	227T256_1 (MARSFO-LAGOV)	10.59	5	0.000	10.594	0.000	0.000	0.000	0.000	0.000	0.000	0.000	0.000	0.000	0.000
TOP10_RENT	2014	PRSSW_MR1 (PRSSW-PRSSW)	10.41	6	0.000	0.904	9.504	0.000	0.000	0.000	0.000	0.000	0.000	0.000	0.000	0.000
TOP10_RENT	2014	CALALS_LON_HI1_1 (LON_HILL-CALALS)	8.13	7	1.020	0.000	5.603	1.504	0.000	0.000	0.000	0.000	0.000	0.000	0.000	0.000
TOP10_RENT	2014	6240_A (SNYDR-SACRC)	8.08	8	0.000	0.000	8.082	0.000	0.000	0.000	0.000	0.000	0.000	0.000	0.000	0.000
TOP10_RENT	2014	BETHK_66_A (HK-BET)	7.87	9	0.000	0.000	0.000	7.873	0.000	0.000	0.000	0.000	0.000	0.000	0.000	0.000
TOP10_RENT	2014	BI_SMR98_A (SMITHERS-BI)	7.13	10	0.000	0.000	0.017	7.114	0.000	0.000	0.000	0.000	0.000	0.000	0.000	0.000

[Home](#)



category	year	item	rankvar	rank	JAN	FEB	MAR	APR	MAY	JUN	JUL	AUG	SEP	OCT	NOV	DEC
FREQ EXIST	2014	BRUNI 69 1 (BRUNI-BRUNI)	1648	1	341	328	480	499	0	0	0	0	0	0	0	0
FREQ EXIST	2014	ALO WAR 1 (WARBURTN-ALOES)	1230	2	368	215	357	290	0	0	0	0	0	0	0	0
FREQ EXIST	2014	GILA HIWAY 2 1 (GILA-HIWAY 9)	1103	3	482	15	26	580	0	0	0	0	0	0	0	0
FREQ EXIST	2014	ROTN WOLFGA1 1 (WOLFGANG-ROTN)	1075	4	349	256	330	140	0	0	0	0	0	0	0	0
FREQ EXIST	2014	HIC LOCU 1 (HICKRY D-LOCUST D)	951	5	332	234	284	101	0	0	0	0	0	0	0	0
FREQ EXIST	2014	WHTNY FMR2 (WHTNY-WHTNY)	722	6	191	174	120	237	0	0	0	0	0	0	0	0
FREQ EXIST	2014	100027 D 1 (WHTNY-WND)	689	7	61	288	181	159	0	0	0	0	0	0	0	0
FREQ EXIST	2014	ODNTH SD3 1 (ODNTH-ODNTH)	656	8	0	0	16	640	0	0	0	0	0	0	0	0
FREQ EXIST	2014	LA PAL VCAVAZ1 1 (LA PALMA-VCAVAZC)	647	9	172	118	124	233	0	0	0	0	0	0	0	0
FREQ EXIST	2014	MUNDAY MUNDAY1 1 (MUNDAYST-MUND)	625	10	139	212	178	96	0	0	0	0	0	0	0	0
TOP10 RENT	2014	ODNTH SD3 1 (ODNTH-ODNTH)	31.55	1	0.000	0.000	0.831	30.719	0.000	0.000	0.000	0.000	0.000	0.000	0.000	0.000
TOP10 RENT	2014	LYTTON S AT1 (LYTTON S-LYTTON S)	18.39	2	7.457	8.767	2.138	0.031	0.000	0.000	0.000	0.000	0.000	0.000	0.000	0.000
TOP10 RENT	2014	FALFUR 69A1 (FALFUR-FALFUR)	10.04	3	4.339	5.702	0.000	0.000	0.000	0.000	0.000	0.000	0.000	0.000	0.000	0.000
TOP10 RENT	2014	227T256 1 (MARSFO-LAGOV1)	9.72	4	0.000	9.097	0.503	0.116	0.000	0.000	0.000	0.000	0.000	0.000	0.000	0.000
TOP10 RENT	2014	LON HI ROB CP1 1 (LON HILL-ROB CPL)	6.40	5	1.961	4.434	0.000	0.000	0.000	0.000	0.000	0.000	0.000	0.000	0.000	0.000
TOP10 RENT	2014	CALALS LON HI1 1 (LON HILL-CALALS)	5.75	6	0.000	0.912	4.635	0.208	0.000	0.000	0.000	0.000	0.000	0.000	0.000	0.000
TOP10 RENT	2014	6915 A (ODNTH-ODBSW)	4.32	7	0.009	0.867	3.446	0.000	0.000	0.000	0.000	0.000	0.000	0.000	0.000	0.000
TOP10 RENT	2014	SOP110 (SOP110)	3.59	8	0.016	0.000	0.870	2.705	0.000	0.000	0.000	0.000	0.000	0.000	0.000	0.000
TOP10 RENT	2014	PRSSW MR1 (PRSSW-PRSSW)	3.14	9	0.224	1.544	1.359	0.011	0.000	0.000	0.000	0.000	0.000	0.000	0.000	0.000
TOP10 RENT	2014	BI WAP50 A (WAP-BI)	3.13	10	0.000	0.007	0.091	3.029	0.000	0.000	0.000	0.000	0.000	0.000	0.000	0.000

[Home](#)

fr_option	year	pair	total_value	rank	JAN	FEB	MAR	APR	MAY	JUN	JUL	AUG	SEP	OCT	NOV	DEC
N	2014	HB WEST-LZ WEST	8.43	1	0.356	0.572	1.616	2.253	3.627	0.000	0.000	0.000	0.000	0.000	0.000	0.000
N	2014	HB NORTH-HB HOUSTON	3.85	2	0.000	0.000	0.522	1.469	1.854	0.000	0.000	0.000	0.000	0.000	0.000	0.000
N	2014	HB SOUTH-LZ SOUTH	3.43	3	0.459	0.495	0.560	1.182	0.729	0.000	0.000	0.000	0.000	0.000	0.000	0.000
N	2014	HB NORTH-HB SOUTH	1.96	4	0.252	0.300	0.343	0.596	0.470	0.000	0.000	0.000	0.000	0.000	0.000	0.000
N	2014	HB NORTH-LZ NORTH	1.92	5	0.345	0.276	0.427	0.517	0.358	0.000	0.000	0.000	0.000	0.000	0.000	0.000
N	2014	HB HOUSTON-LZ HOUSTON	0.66	6	0.076	0.059	0.077	0.232	0.219	0.000	0.000	0.000	0.000	0.000	0.000	0.000
N	2014	LGE LGE GT1-HB SOUTH	0.42	7	0.030	0.124	0.092	0.097	0.078	0.000	0.000	0.000	0.000	0.000	0.000	0.000
N	2014	OGSES 1-HB NORTH	0.39	8	0.045	0.041	0.095	0.133	0.073	0.000	0.000	0.000	0.000	0.000	0.000	0.000
N	2014	OGSES 2-HB NORTH	0.38	9	0.043	0.041	0.098	0.129	0.072	0.000	0.000	0.000	0.000	0.000	0.000	0.000
N	2014	LGE LGE GT1-HB HOUSTON	0.34	10	0.000	0.046	0.049	0.108	0.134	0.000	0.000	0.000	0.000	0.000	0.000	0.000
Y	2014	HB WEST-LZ WEST	4.82	1	0.545	0.379	0.881	1.086	1.925	0.000	0.000	0.000	0.000	0.000	0.000	0.000
Y	2014	HB SOUTH-LZ SOUTH	1.27	2	0.231	0.065	0.065	0.315	0.598	0.000	0.000	0.000	0.000	0.000	0.000	0.000
Y	2014	HB NORTH-HB HOUSTON	1.07	3	0.190	0.037	0.663	0.090	0.092	0.000	0.000	0.000	0.000	0.000	0.000	0.000
Y	2014	HB NORTH-LZ NORTH	0.87	4	0.271	0.170	0.133	0.139	0.154	0.000	0.000	0.000	0.000	0.000	0.000	0.000
Y	2014	HB WEST-HB NORTH	0.79	5	0.159	0.121	0.319	0.164	0.031	0.000	0.000	0.000	0.000	0.000	0.000	0.000
Y	2014	CALAVER JKS2-LZ CPS	0.67	6	0.099	0.031	0.070	0.144	0.330	0.000	0.000	0.000	0.000	0.000	0.000	0.000
Y	2014	RIONOG ST1-HB SOUTH	0.57	7	0.164	0.119	0.123	0.000	0.161	0.000	0.000	0.000	0.000	0.000	0.000	0.000
Y	2014	HB NORTH-LZ SOUTH	0.56	8	0.000	0.324	0.193	0.021	0.019	0.000	0.000	0.000	0.000	0.000	0.000	0.000
Y	2014	STP STP G2-LZ CPS	0.48	9	0.057	0.032	0.136	0.077	0.177	0.000	0.000	0.000	0.000	0.000	0.000	0.000
Y	2014	BRA AVR CST1-LZ CPS	0.37	10	0.031	0.005	0.012	0.064	0.259	0.000	0.000	0.000	0.000	0.000	0.000	0.000

[Home](#)