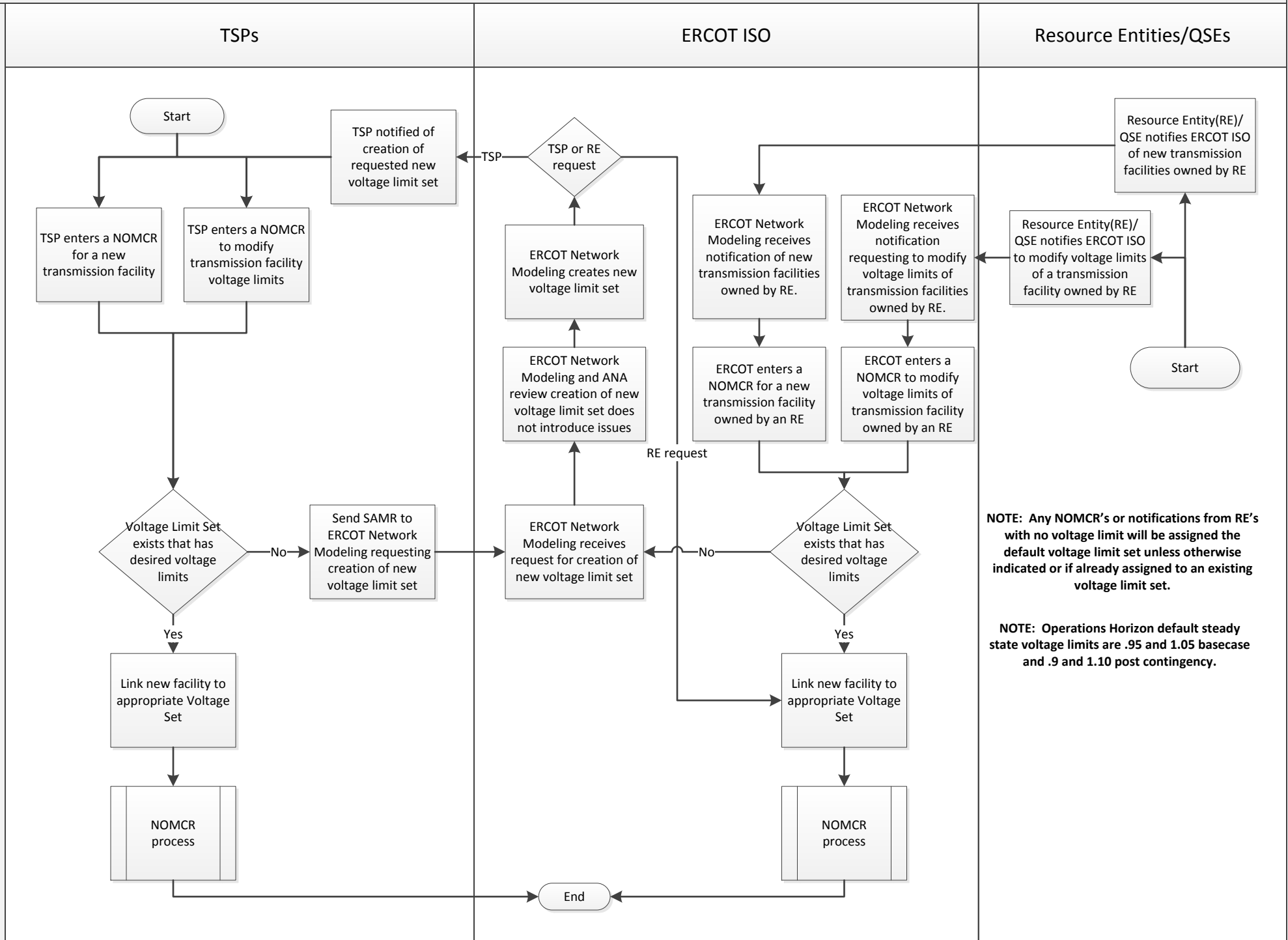


Voltage limits maintenance for Operations Horizon (Network Model)

Operations Horizon (Real time up to One Year)



NOTE: Any NOMCR's or notifications from RE's with no voltage limit will be assigned the default voltage limit set unless otherwise indicated or if already assigned to an existing voltage limit set.

NOTE: Operations Horizon default steady state voltage limits are .95 and 1.05 basecase and .9 and 1.10 post contingency.

Voltage limits maintenance for Planning Horizon (Network Model)

Planning Horizon (One year up to 10 years)

TSPs

SSWG

ERCOT ISO

