



---

## Item 4: CEO Update

*H.B. "Trip" Doggett*

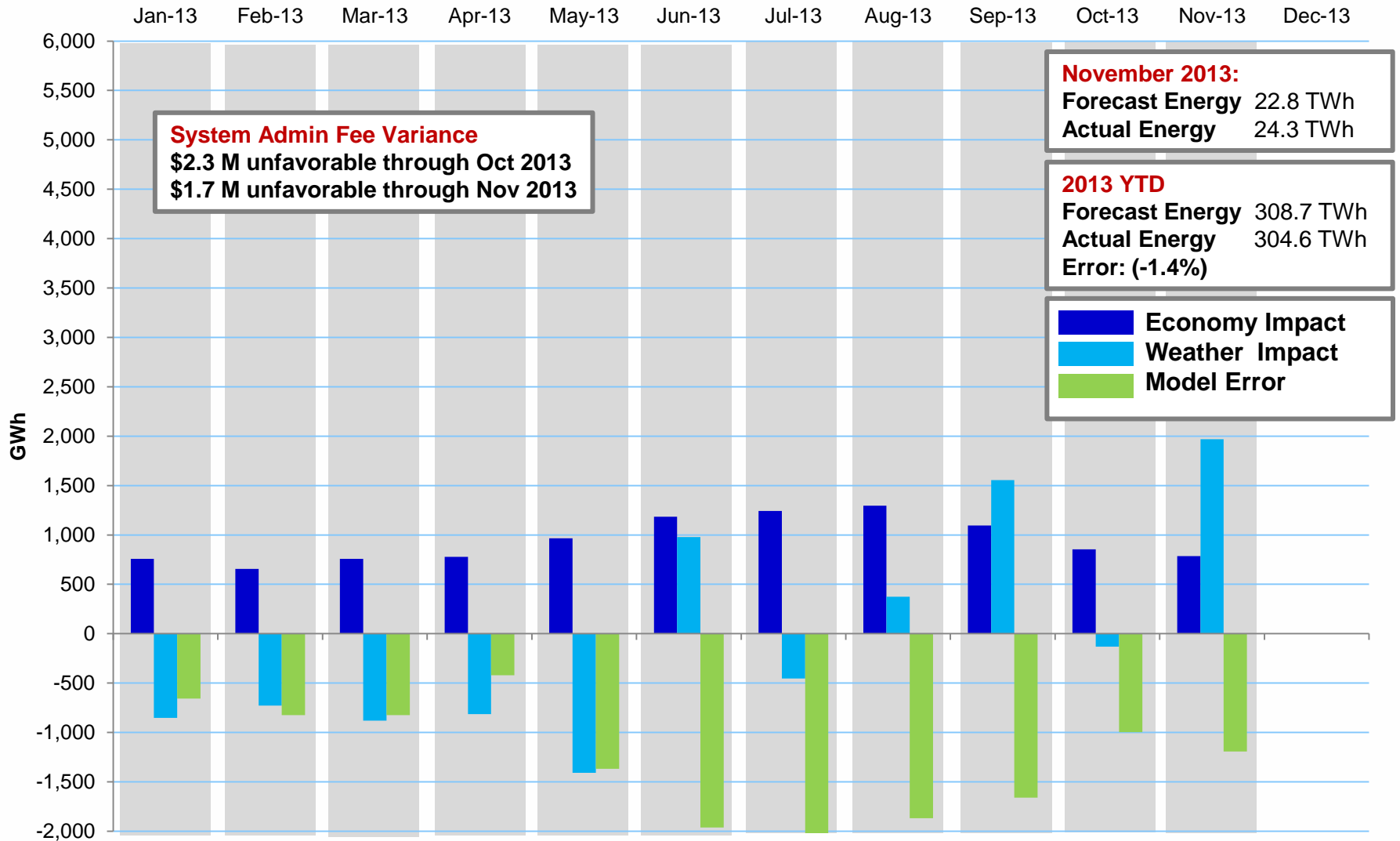
President & Chief Executive Officer

Board of Directors Meeting

ERCOT Public

December 10, 2013

# Impacts of Economy & Weather 2013



# Thank you for your service to ERCOT



## Kent Saathoff

Executive Advisor to CEO

Hired: November 1, 1988

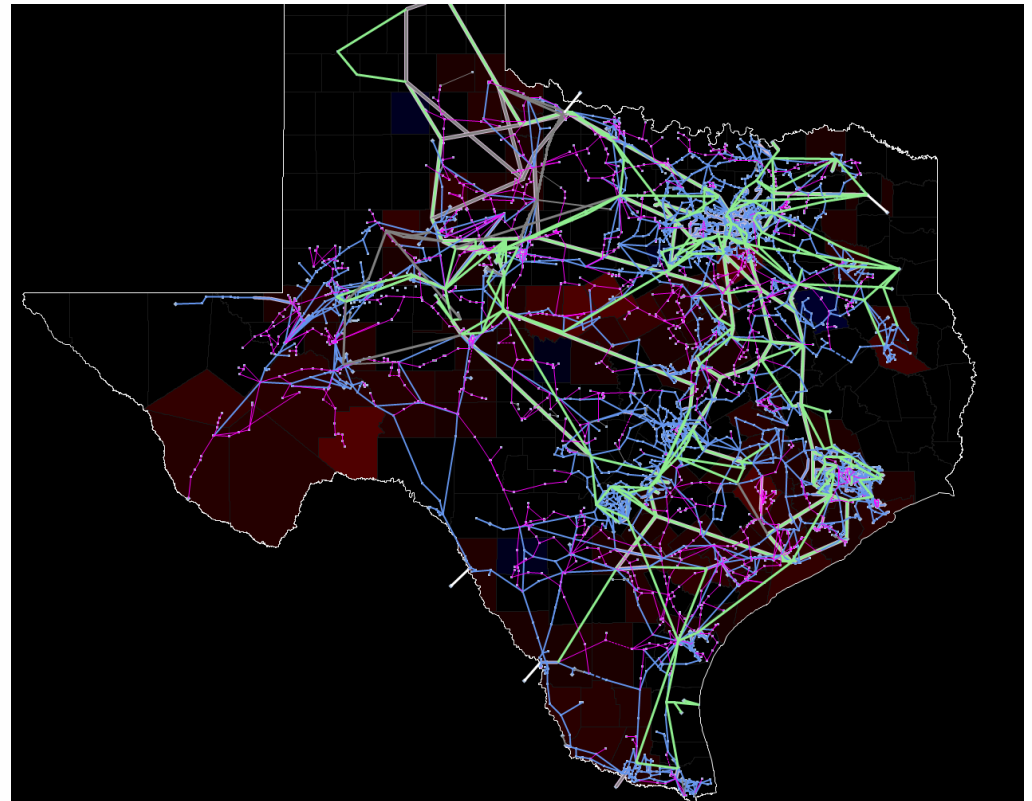
Retiring: February 3, 2014

### ERCOT Career Highlights:

- 4th employee hired by ERCOT
- Managed establishment of first ERCOT ISO enabling wholesale competition in 1996 in blue building at the Taylor, TX location
- Managed consolidation of 10 separate ERCOT control areas into single operational entity in 2001 enabling retail competition
- Managed implementation of both zonal & nodal wholesale markets into ERCOT operations
- 2006 named VP, System Operations
- 2008 named VP, Grid Planning & Operations

# Macomber Map®

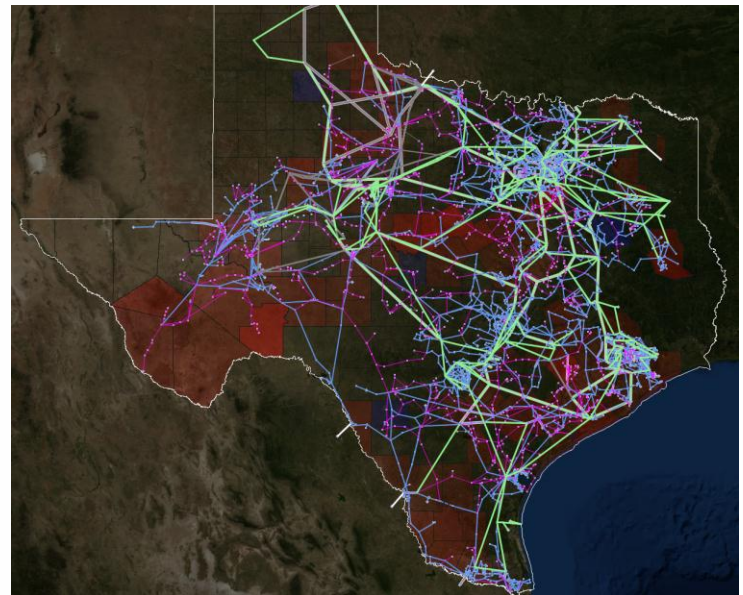
- ERCOT recognized the need for improved situational awareness and user experience enhancements in the control room after the 2003 Northeast blackout.
- Gary Macomber and Kate Horne performed the initial research on control room needs in 2005. In 2008, Gary passed away a week before approval to develop one of these prototypes into a new control room user Interface, and it's named in his memory – Macomber Map.



# Macomber Map®

- ERCOT's Application, Operations and Engineering teams have worked together to provide an open-source version of an internally developed application that:
  - Provides wide-area situational awareness and easy access to needed high-level data
  - Represents real-time data from multiple systems in a configurable graphic format
  - Consolidates key information source for control center operators, planners, outage coordinators, etc.
  - Enhances the Blackstart training simulation experience and replicates real-world conditions
  - Allows Market Participant trainees to train on their network and its state

The Macomber Map® enables ERCOT operators and other users to monitor grid conditions integrated from a variety of data sources. This mapping tool was recently released as an open source software product for use by other entities that could benefit from a similar method of viewing data from a wide geographic perspective.



# ERCOT Legal Board Support Team

Core Team	Years of Board Support
<b>Mitzie Mann</b> Senior Paralegal	13
<b>Tisa Wilkins</b> Regulatory Legal Specialist	10
<b>Kathie Randle</b> Senior Executive Assistant	8
<b>Vickie Leady</b> Assistant General Counsel and Assistant Corporate Secretary	5
<b>Lori Markham</b> Corporate Governance Specialist	2
<b>Carolyn Rife</b> Senior Administrative Assistant	2
<b>Jamie Schue</b> Associate Corporate Counsel	1



- “Air traffic controllers” for Board, Committee and Membership meetings
- Strive to be available to Board members 365/24/7
- Coordinate with dozens of Subject Matter Experts to finalize roughly 800 pages of Board/Committee materials per meeting
- A highly responsive and organized team