



ERCOT Monthly Operational Overview (**April 2013**)

ERCOT Public
May 15, 2013

Grid Operations & Planning

April 2013 Summary

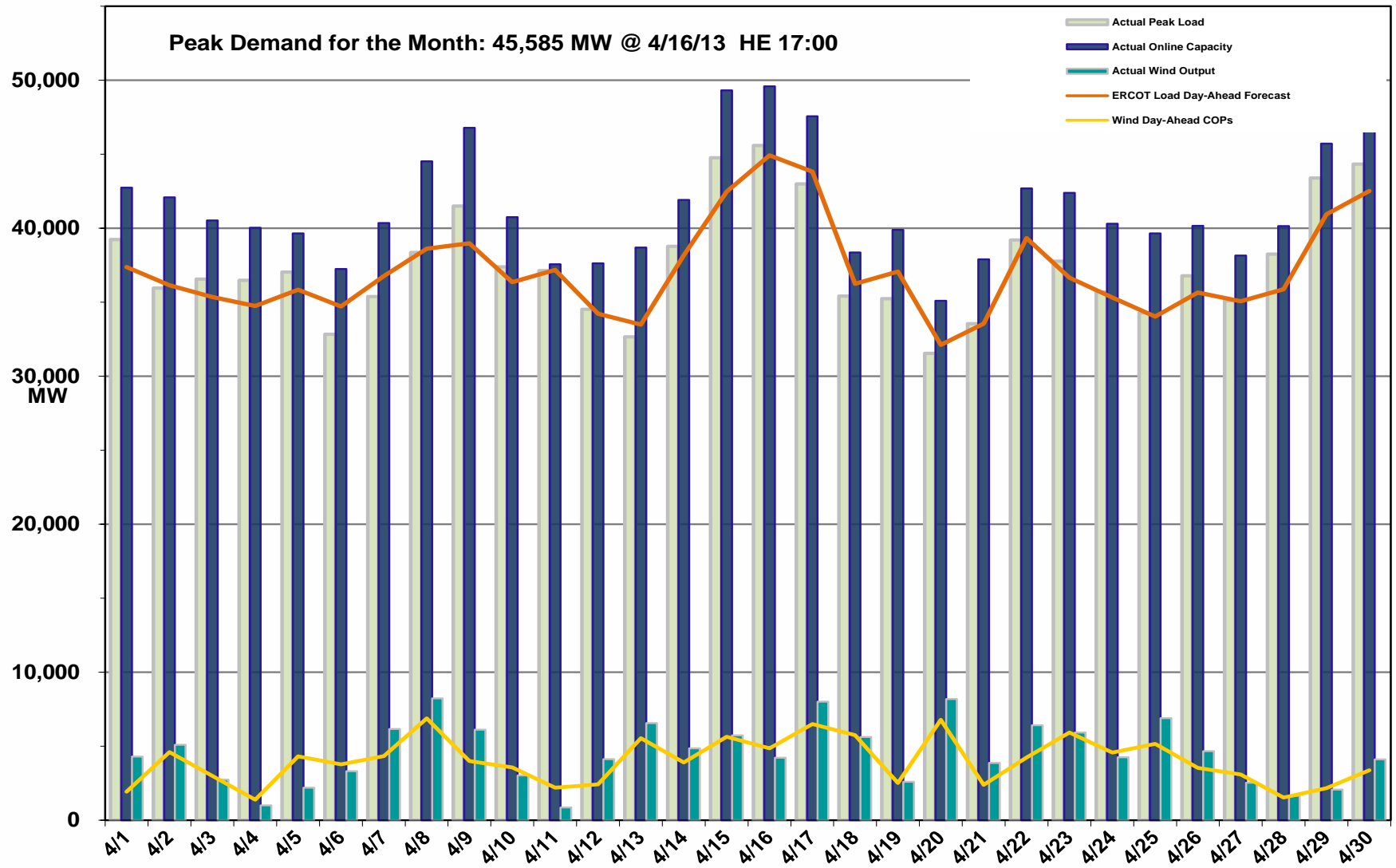
Operations

- The peak demand of 45,585 MW on April 16th was more than the mid-term forecast peak of 44,909 MW and less than the April 2012 actual peak demand of 48,774 MW. The instantaneous load on April 16th was 45,755 MW.
- Day-ahead load forecast error for April was 2.81%.
- 3 Advisories were issued for Physical Responsive Capability (PRC) below 3000 MW.
- No Watches were issued for PRC under 2500 MW.
- No Energy Emergency Alert (EEA) events issued.

Planning Activities

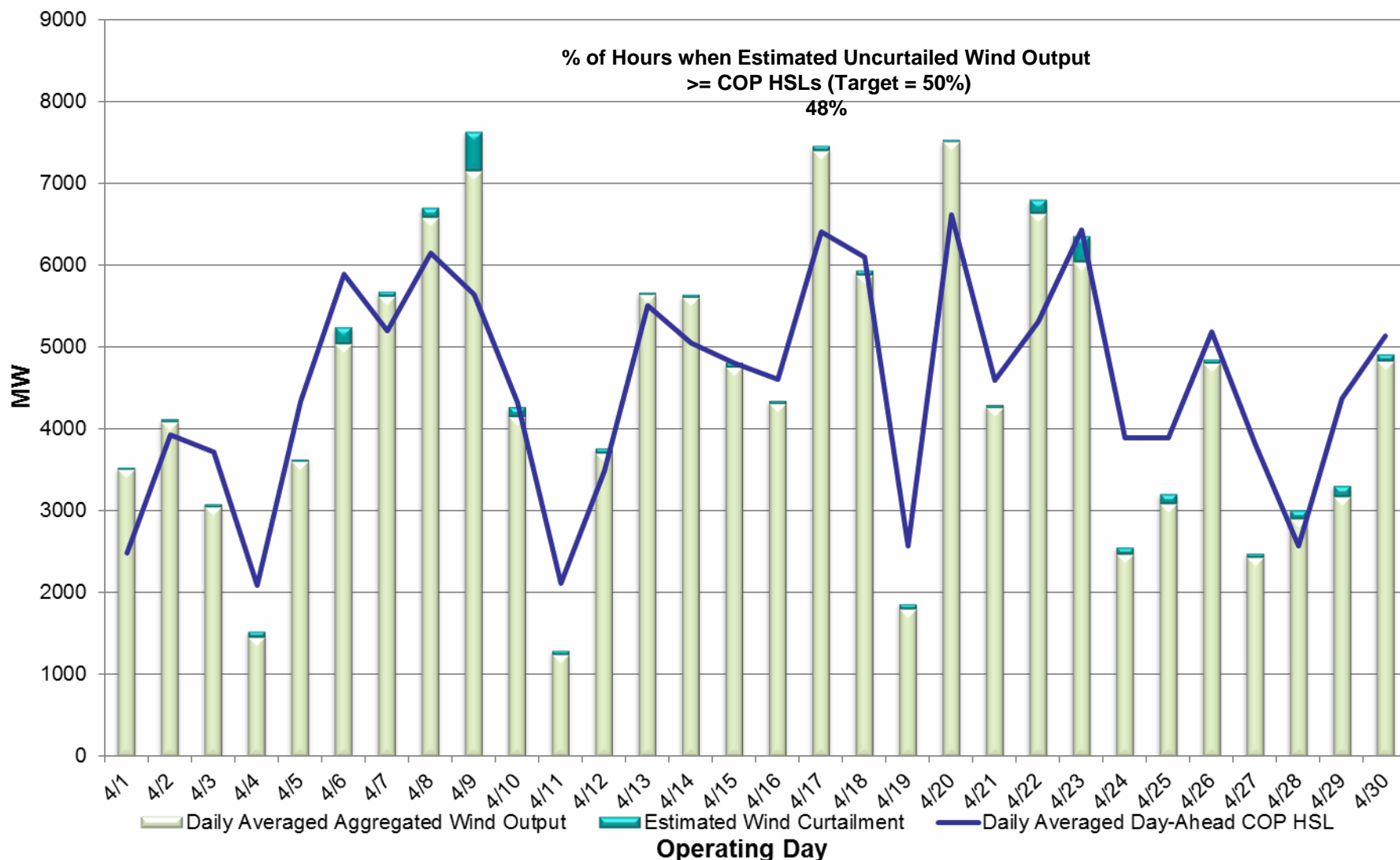
- 159 active generation interconnection requests totaling over 48,000 MW, including 20,000 MW of wind generation as of April 30, 2013. The same number of requests and total MW from March 31, 2013
- 10,570 MW wind capacity in commercial operation April 30, 2013; no change from March 31, 2013

April 2013 Daily Peak Demand: Hourly Average Actual vs. Forecast, Wind Day-Ahead COPs & On-line Capacity at Peak



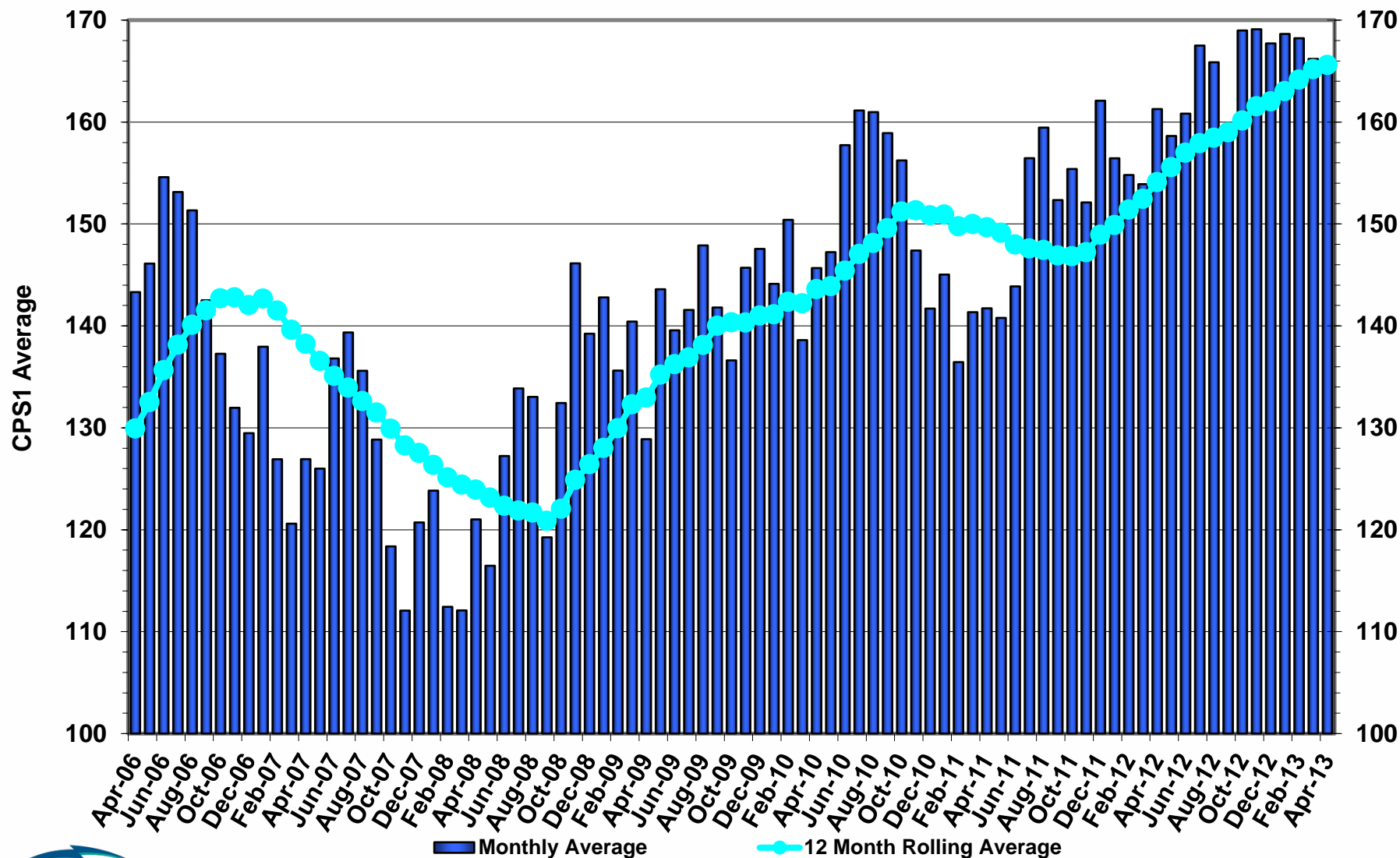
Note: All data are hourly averages during the peak load hour obtained from COPs, and EMMS.

April 2013 Actual Wind Output plus Curtailments vs. Wind Day-Ahead COPs for All Hours



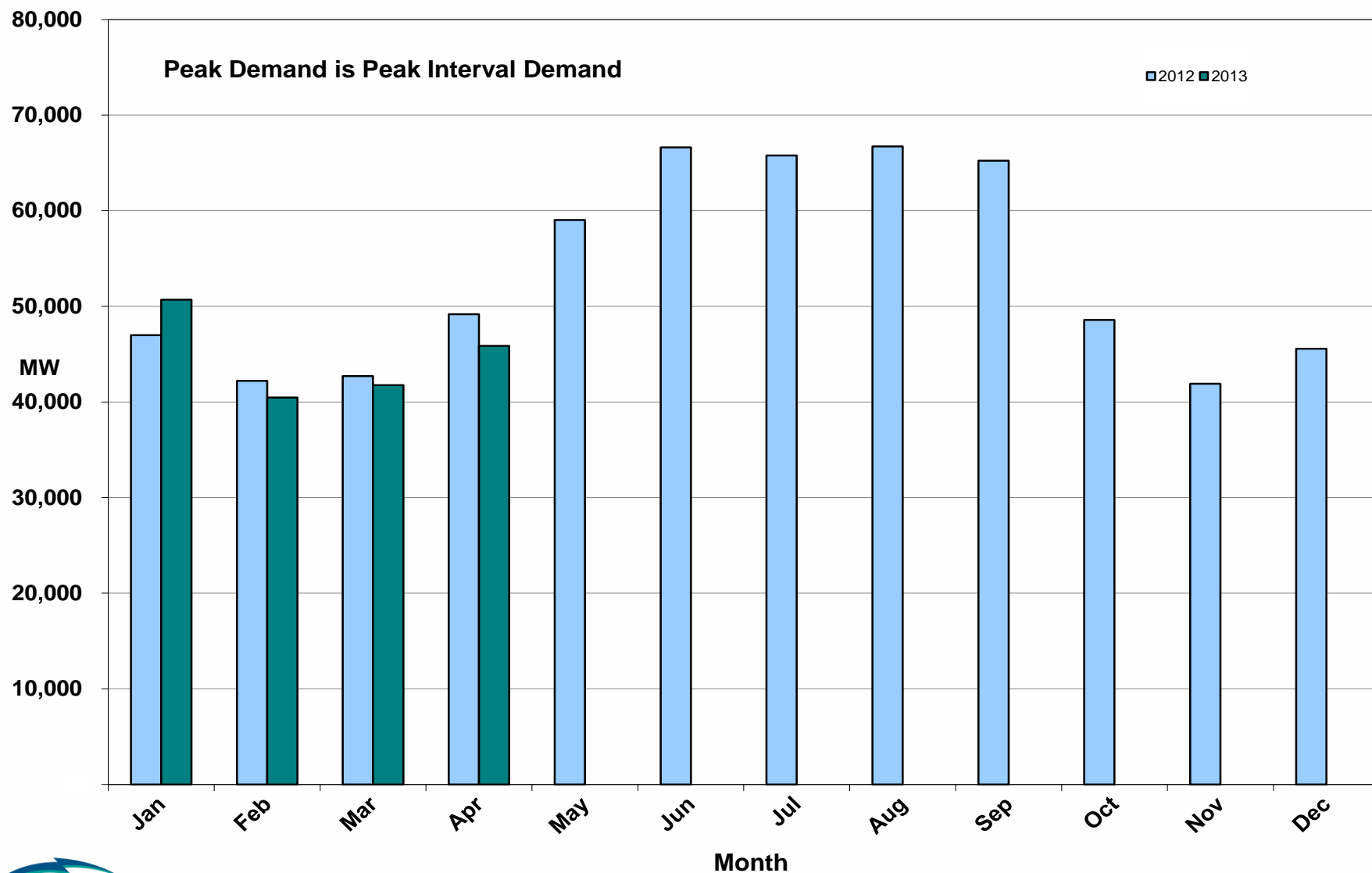
Note: QSEs must use the AWT 50% probability of exceedance forecast as the HSL in their COPs

April 2013 ERCOT's CPS1 Monthly Performance

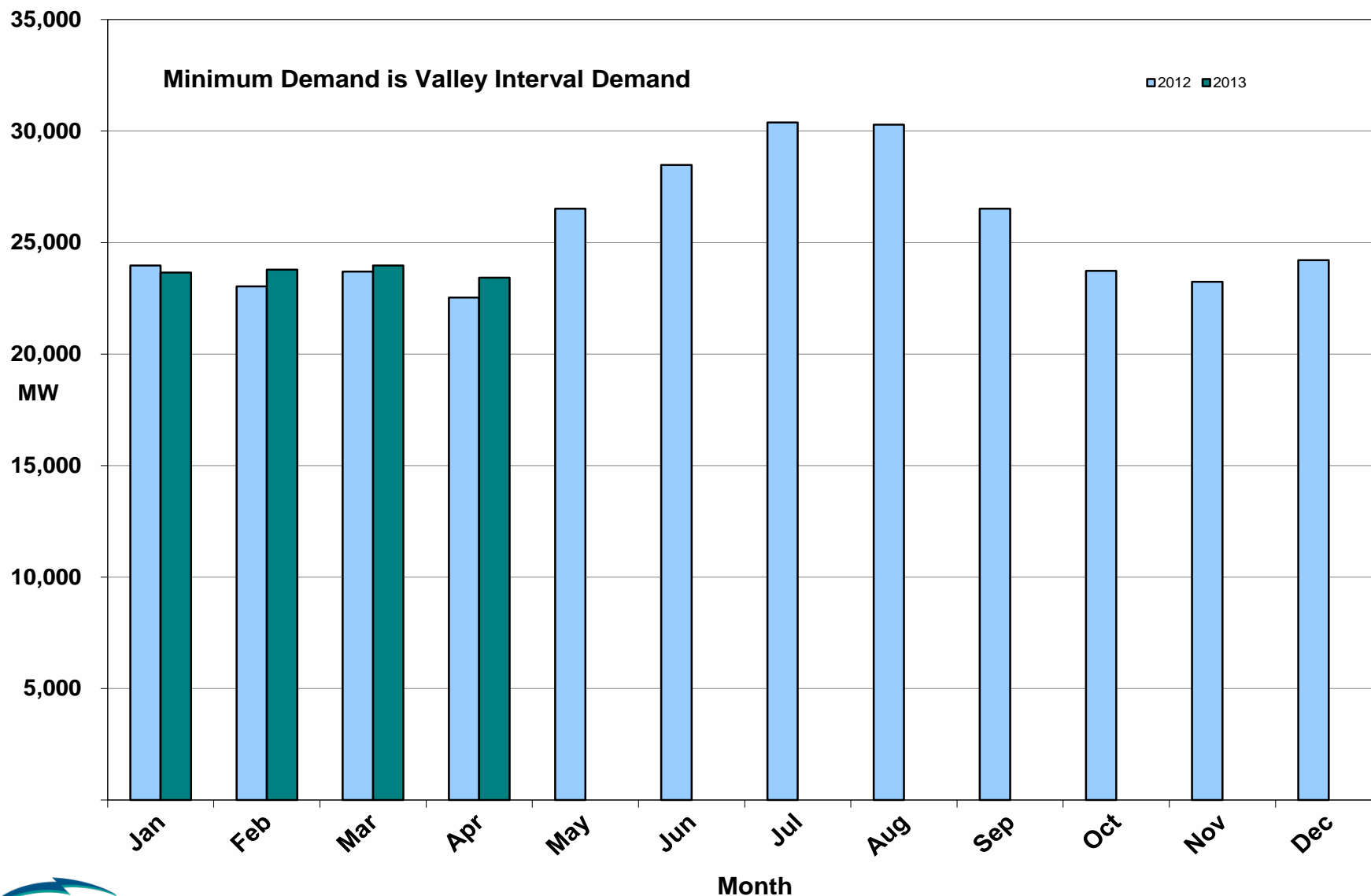


ERCOT Public

April 2013 Monthly Peak Actual Demand



April 2013 Monthly Minimum Actual Demand



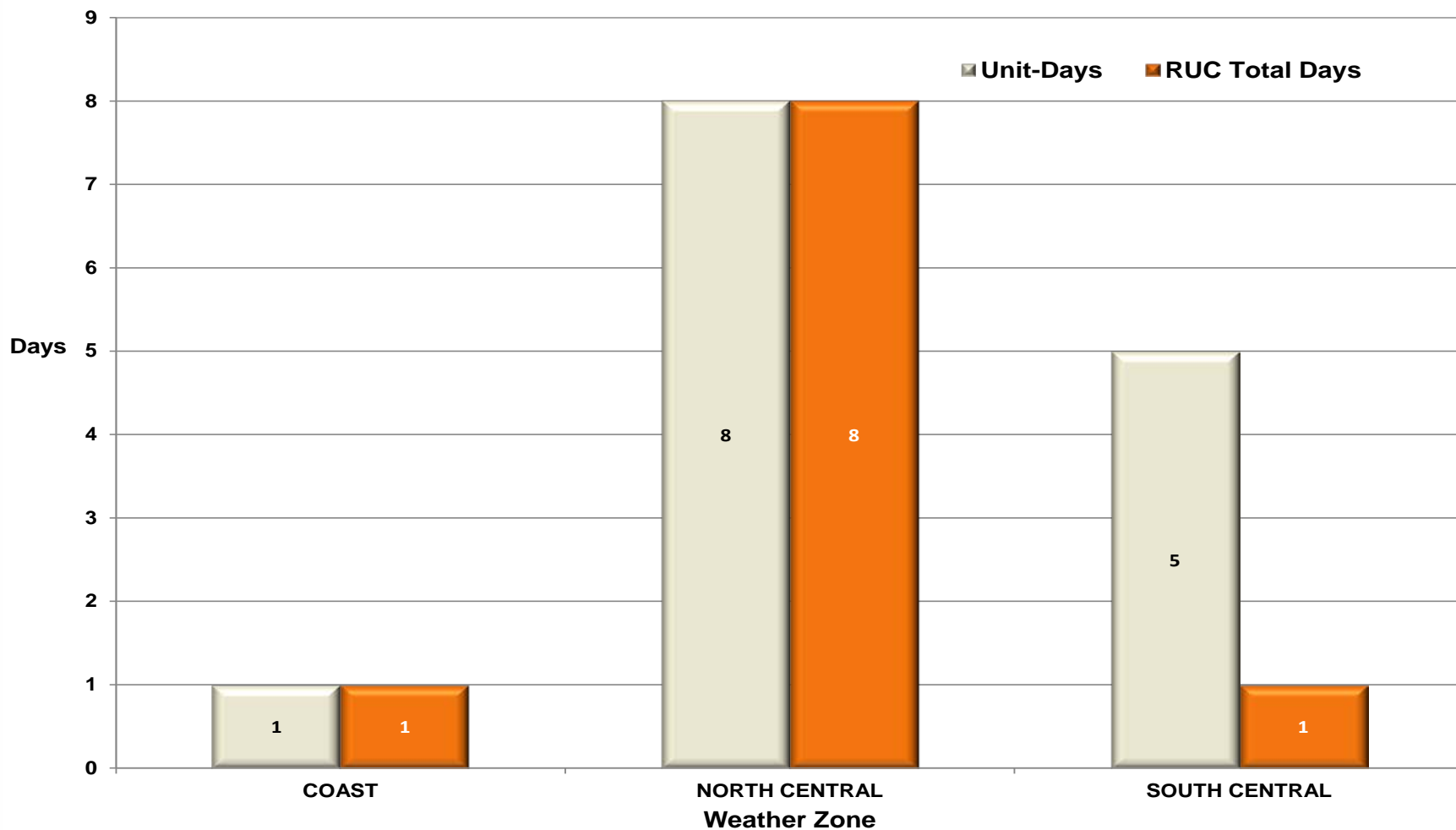
Day-Ahead Load Forecast Performance in April 2013

**Mean Absolute Percent Error (MAPE) for ERCOT Mid-Term Load Forecast (MTLF)
Run at 14:00 Day Ahead**

	2010 MAPE	2011 MAPE	2012 MAPE	2013 MAPE	Apr 2013 MAPE	
Average Annual MAPE	2.83	2.83	3.02	2.96	2.81	
Lowest Monthly MAPE	2.24	1.63	2.51	2.68	Lowest Daily MAPE	0.99 Apr – 21
Highest Monthly MAPE	3.79	3.55	3.49	3.50	Highest Daily MAPE	5.89 Apr – 15

Reliability Unit Commitment (RUC) Capacity by Weather Zone in April 2013

RUC Commitments by Weather Zone



April 2013 Generic Transmission Limits (GTLs)

GTLs	Apr 12 Days GTLs	Feb 13 Days GTLs	Mar 13 Days GTLs	Apr 13 Days GTLs	Last 12 Months Total Days (Apr12 – Apr13)
North – Houston	0	0	0	0	0
West – North	17	5	9	7 Apr(5-6,8-9,14,20,22)	124
Valley Import	0	0	0	0	0

GTL: A transmission flow limit more constraining than a Transmission Element's normal limit established to constrain flow between geographic areas of the ERCOT Transmission System that is used to enforce stability and voltage constraints that cannot be modeled directly in ERCOT's transmission security analysis applications.

Note: This table lists how many times a constraint has been activated to avoid exceeding a GTL limit, it does not imply an exceedance of the GTL occurred.

Advisories and Watches in April 2013

- Advisories issued for Physical Responsive Capability (PRC) below 3000 MW.
 - Issued for three days (04/05,04/28-29)
- Watches issued for Physical Responsive Capability (PRC) below 2500 MW.
 - None
- Transmission Watches
 - None.
- Emergency Notice
 - None.
- Energy Emergency Alerts
 - None

Significant Events in April 2013

- April 25th
 - A frequency excursion occurred as a result of a planned ERCOT Release 2 migration of its Energy Management System. Generation was dispatched to old base points after the migration was completed. SCED was automatically triggered when frequency reached 59.91Hz, which corrected the base point values. The frequency returned to normal within six minutes. The root cause has been identified and corrected to prevent this from happening in the future during planned EMS Release 2 migrations.

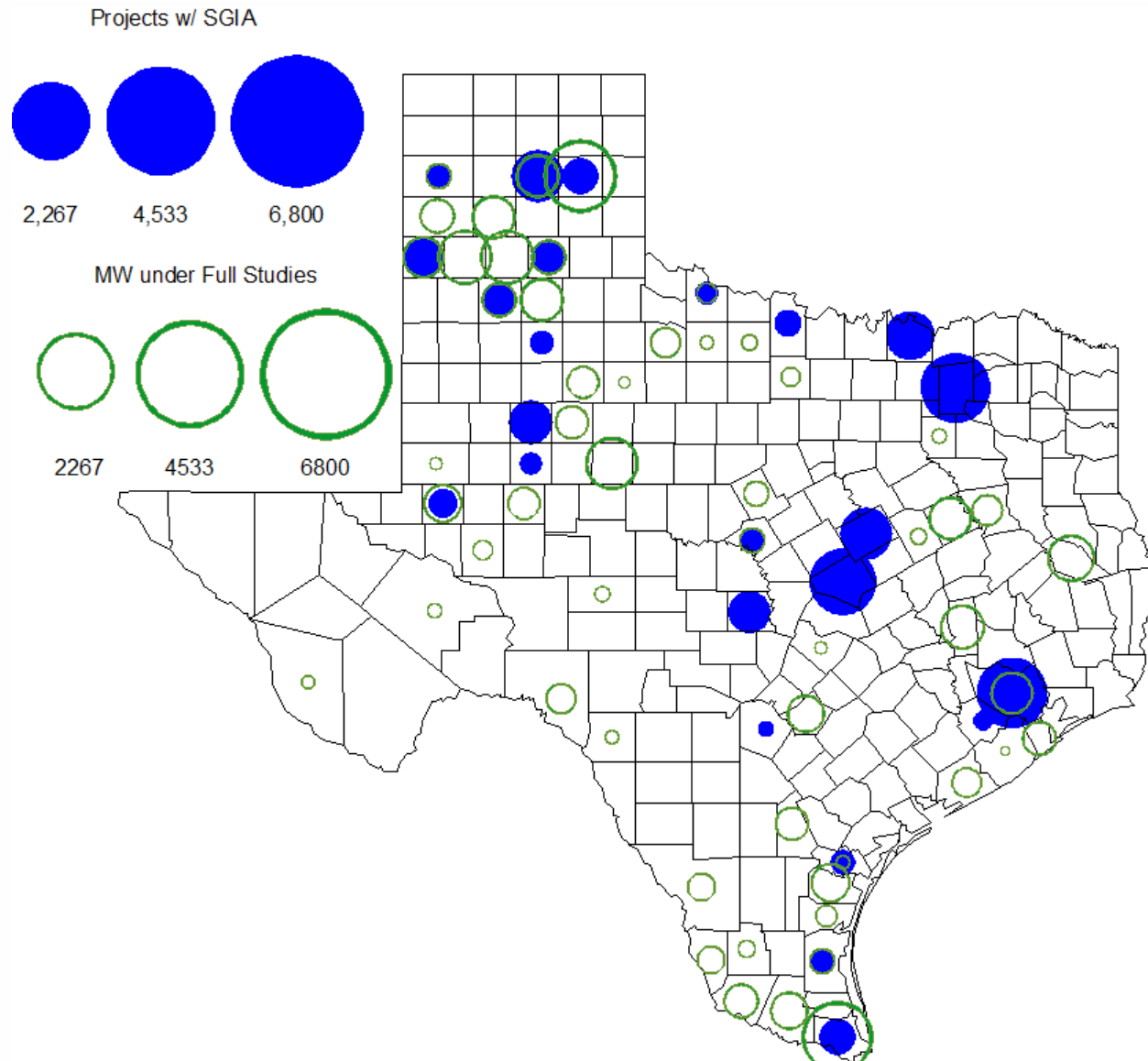
Lake Levels Update – May 1, 2013

Surface Water & (MW)	*Level @ Full Conservation Pool	*Level on Jan 1, 2011	*Level on Oct 7, 2011	*Level on May 1, 2013
Lake Texana (56)	44.50	41.00	32.81	43.92
Bardwell Lake (312)	421.00	420.71	416.23	418.75
Lake Colorado City (407)	2,070.20	2057.33	2052.4	2051.82
Lake Ray Hubbard (916)	435.50	432.37	429.22	432.00
Lake Granbury (983)	693.00	691.90	686.27	686.79
Lake Houston (1016)	41.73	42.10	36.76	42.35
Twin Oaks Reservoir (1616)	400	398.87	398.27	400.12
Lake Limestone (1689)	363	359.03	354	359.79
Martin Lake (2425)	306	300.48	295.06	304.38

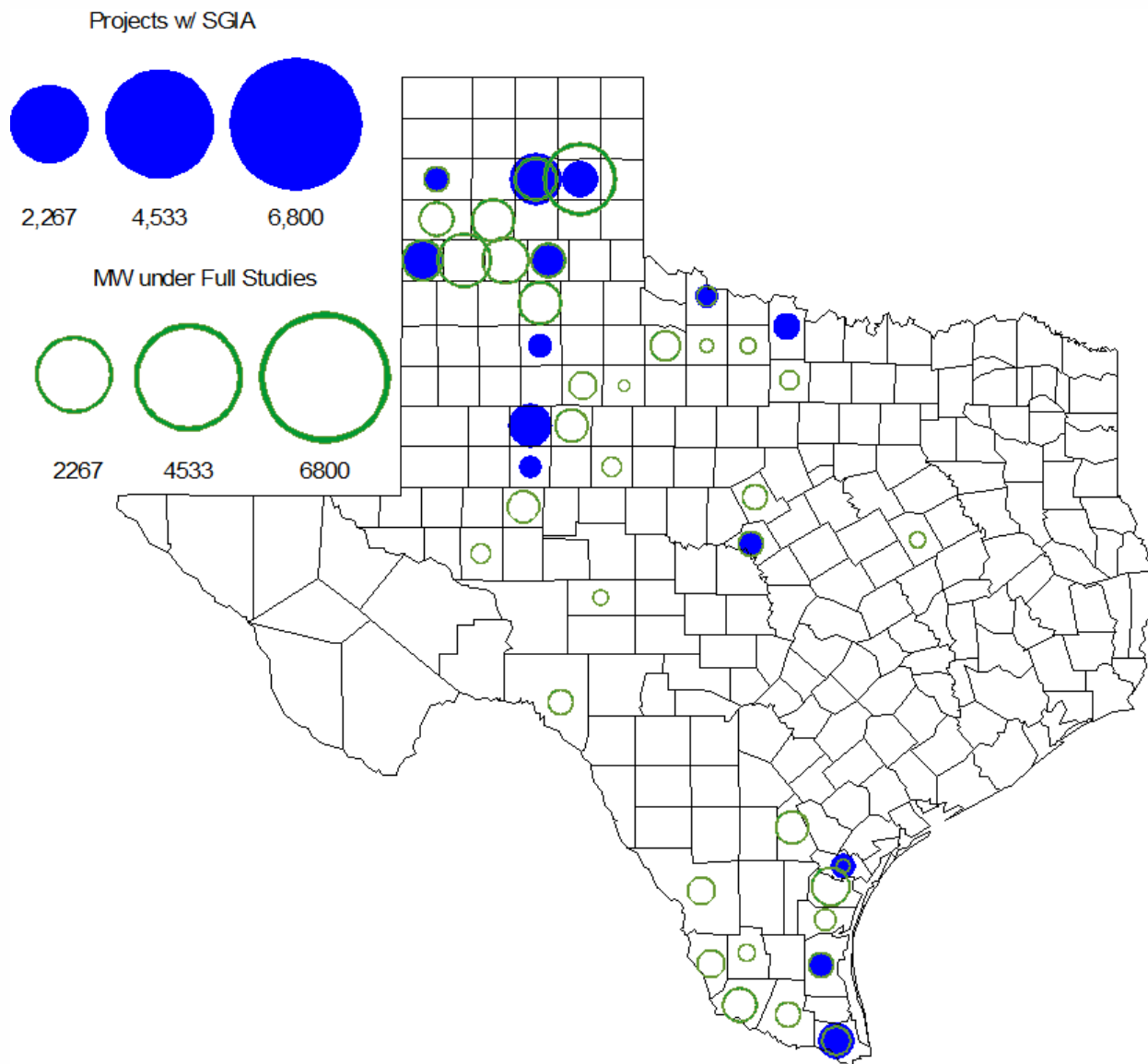
Planning Summary – April 2013

- ERCOT is currently tracking 159 active generation interconnection requests totaling over 48,000 MW. This includes almost 20,000 MW of wind generation.
- ERCOT is currently reviewing proposed transmission improvements with a total cost of \$75 Million
- Transmission Projects endorsed in 2013 total \$349.8 Million
- All projects (in engineering, routing, licensing and construction) total approximately \$9.68 Billion.
- Transmission Projects energized in 2013 total about \$38.6 million.

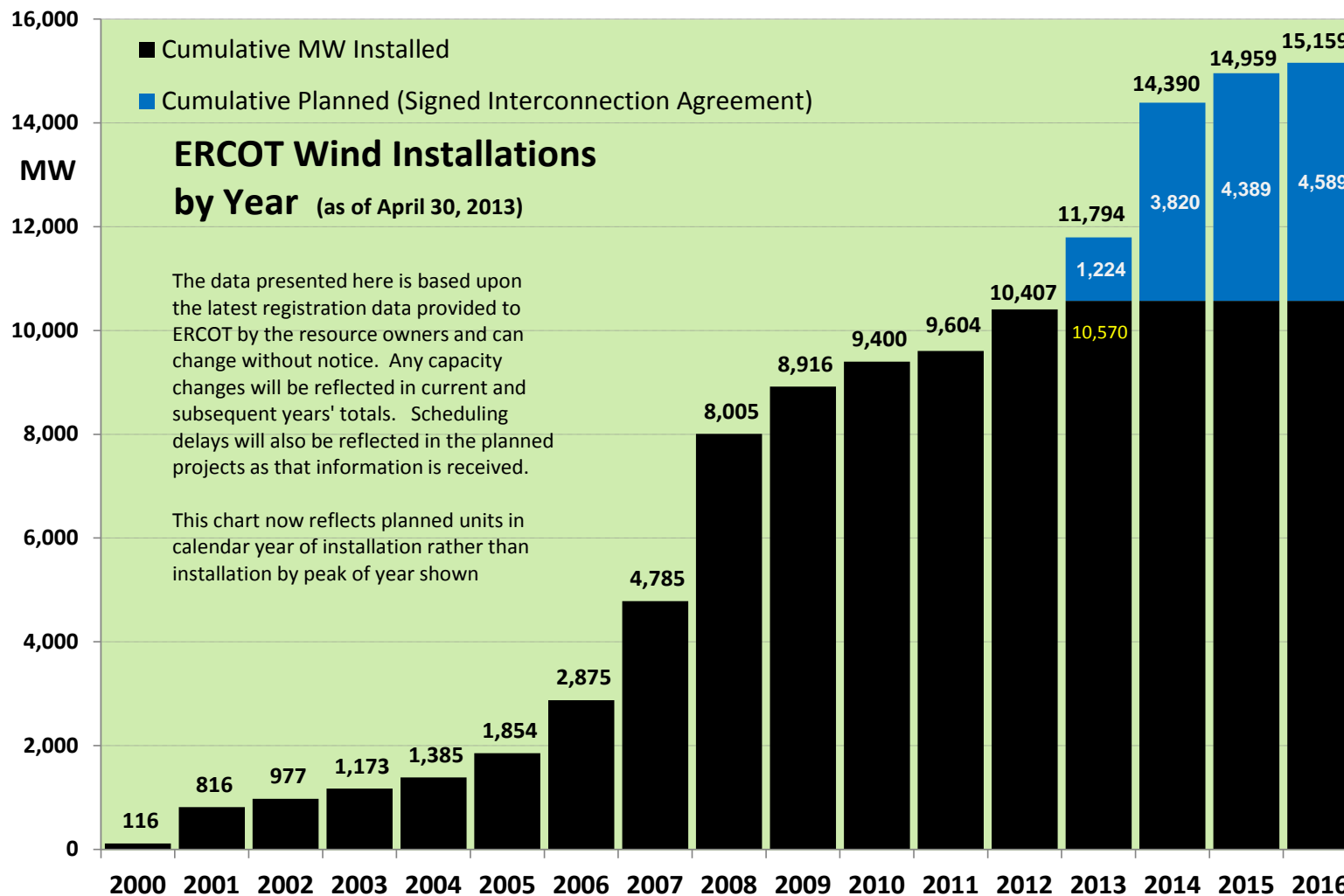
County Location of Planned Generation with Interconnection Requests (all fuels) **April 2013**



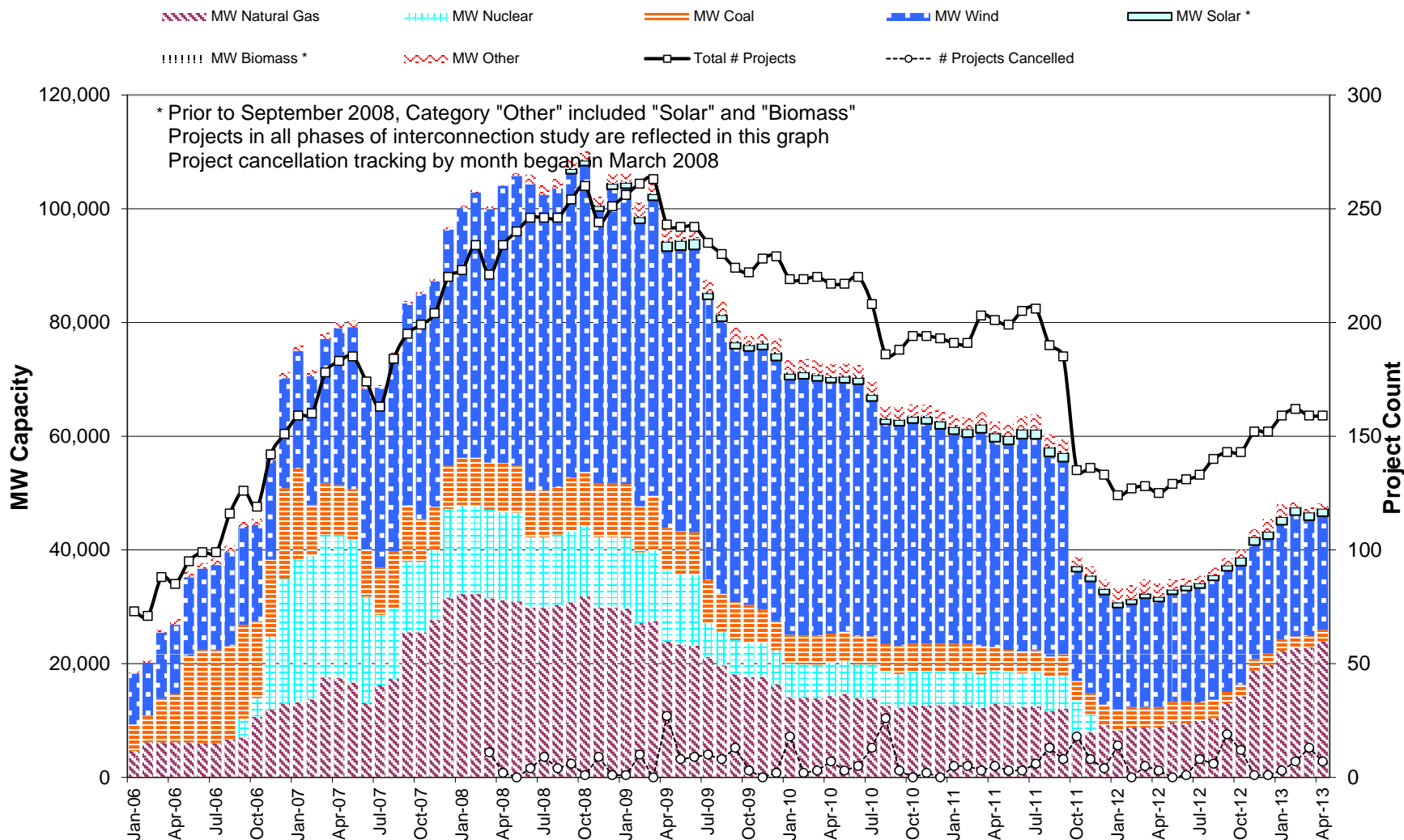
County Location of Planned Generation with Interconnection Requests (Wind) **April 2013**



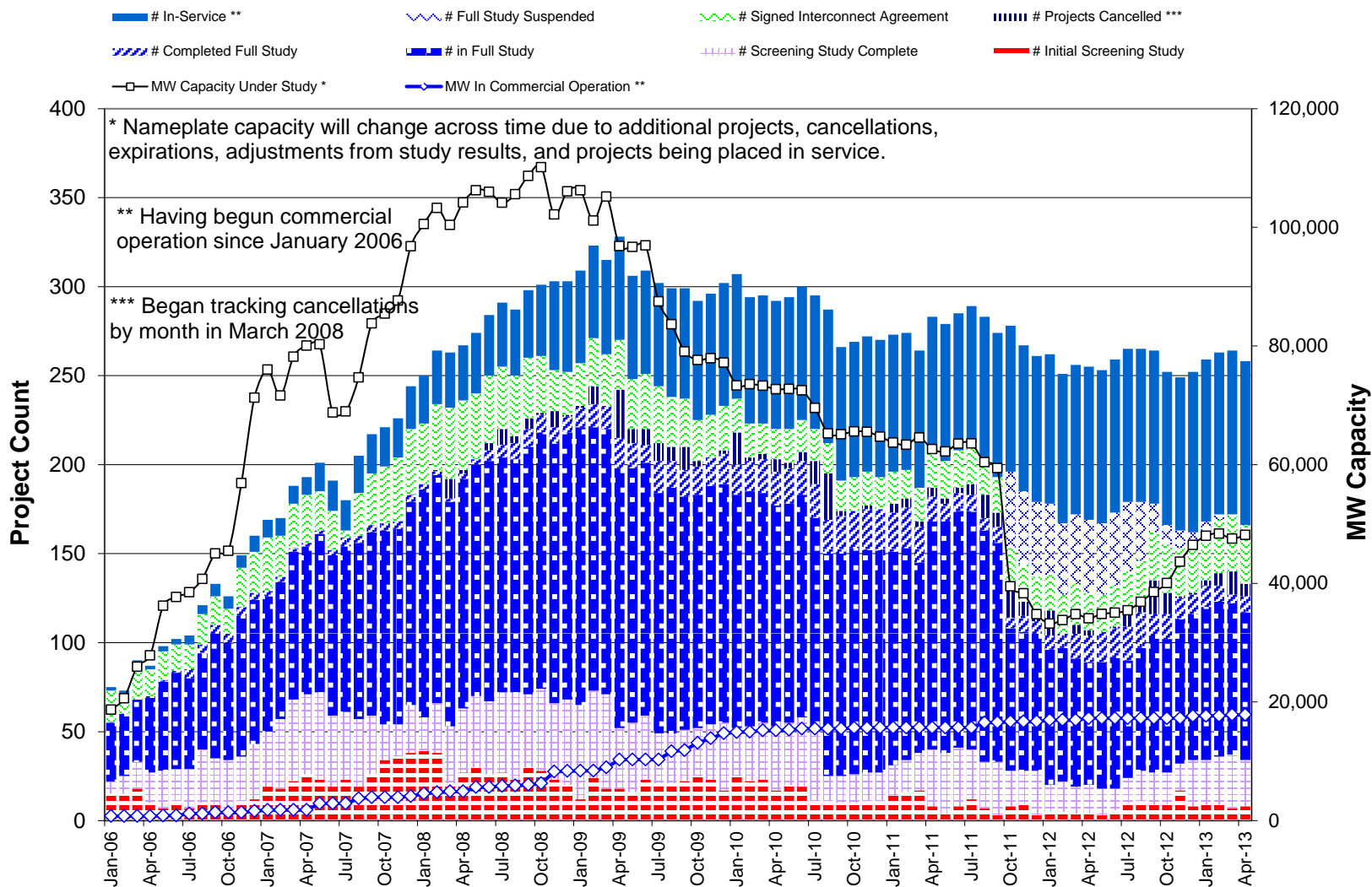
Wind Generation – April 2013



Generation Interconnection Activity by Fuel – April 2013

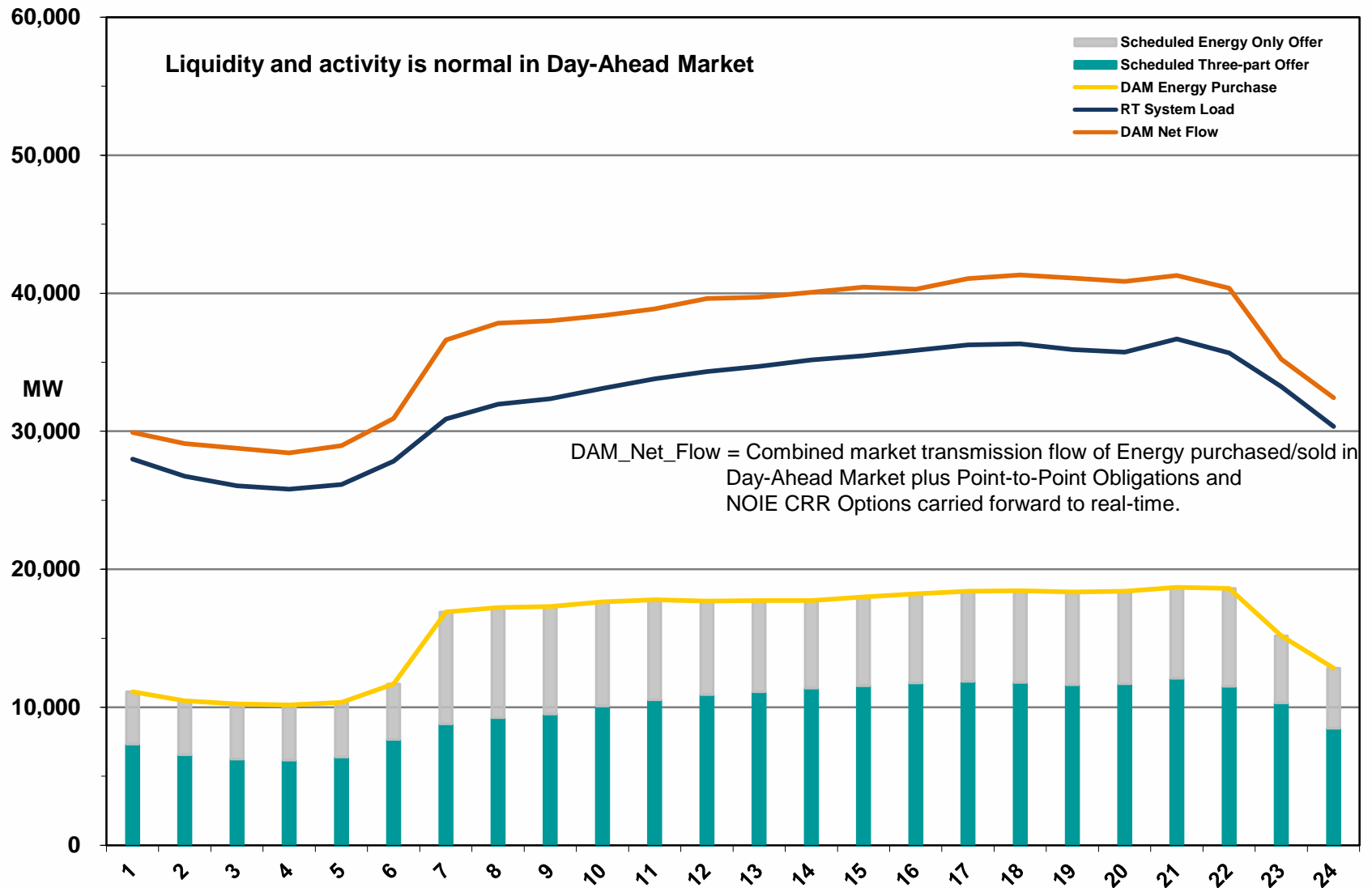


Generation Interconnection Activity by Project Phase – April 2013

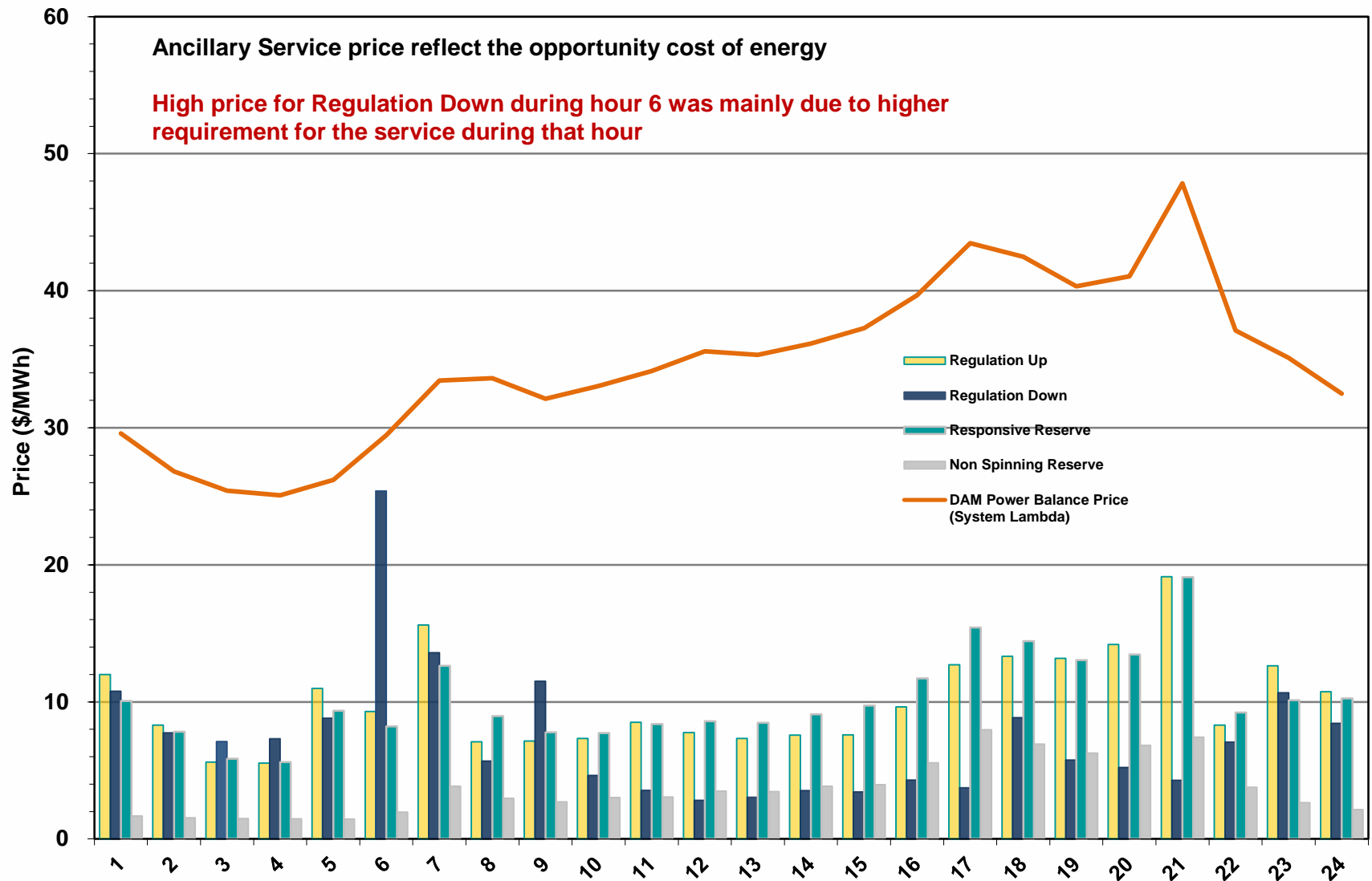


Market Operations

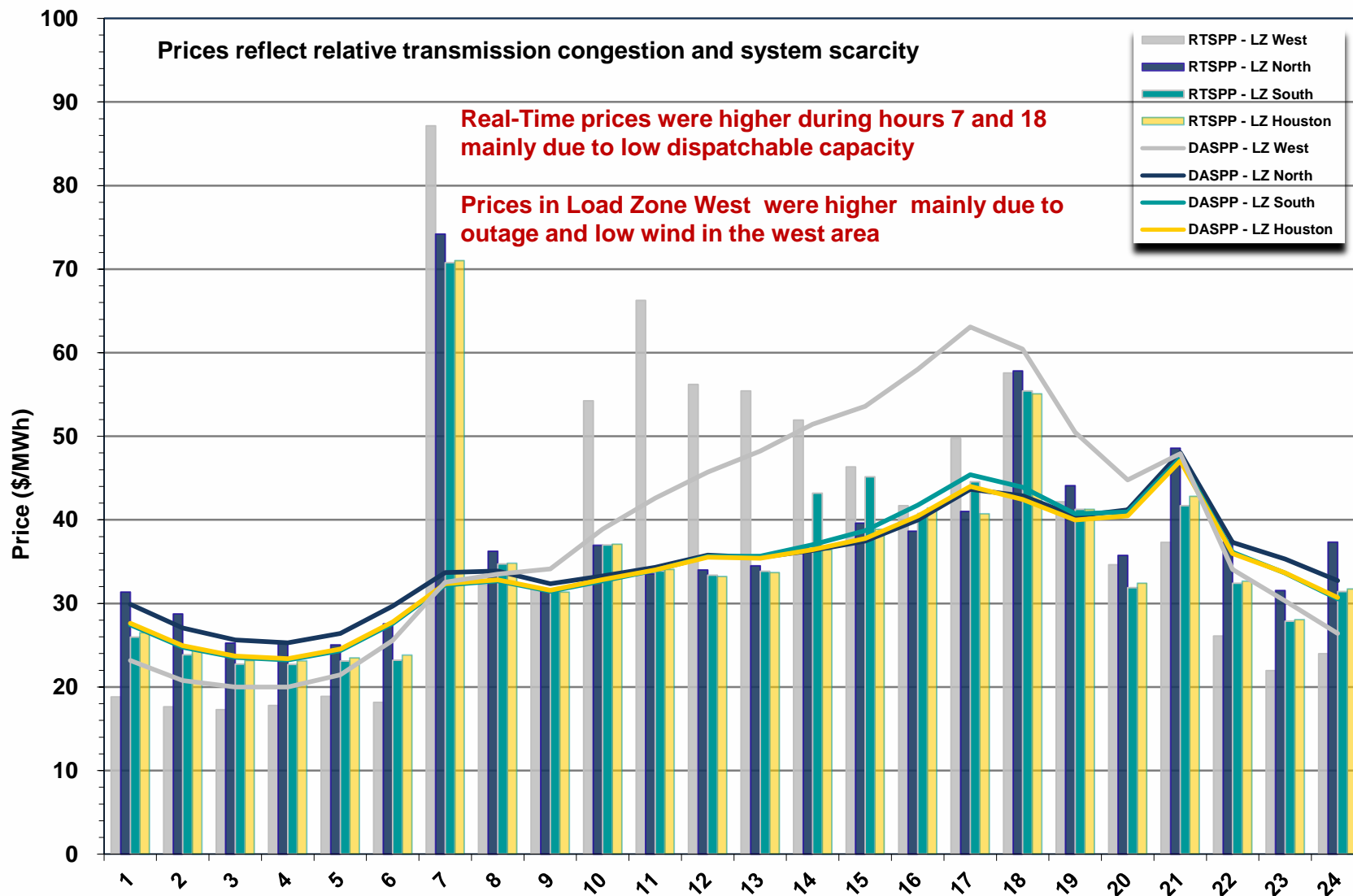
Day-Ahead Schedule (Hourly Average) – April 2013



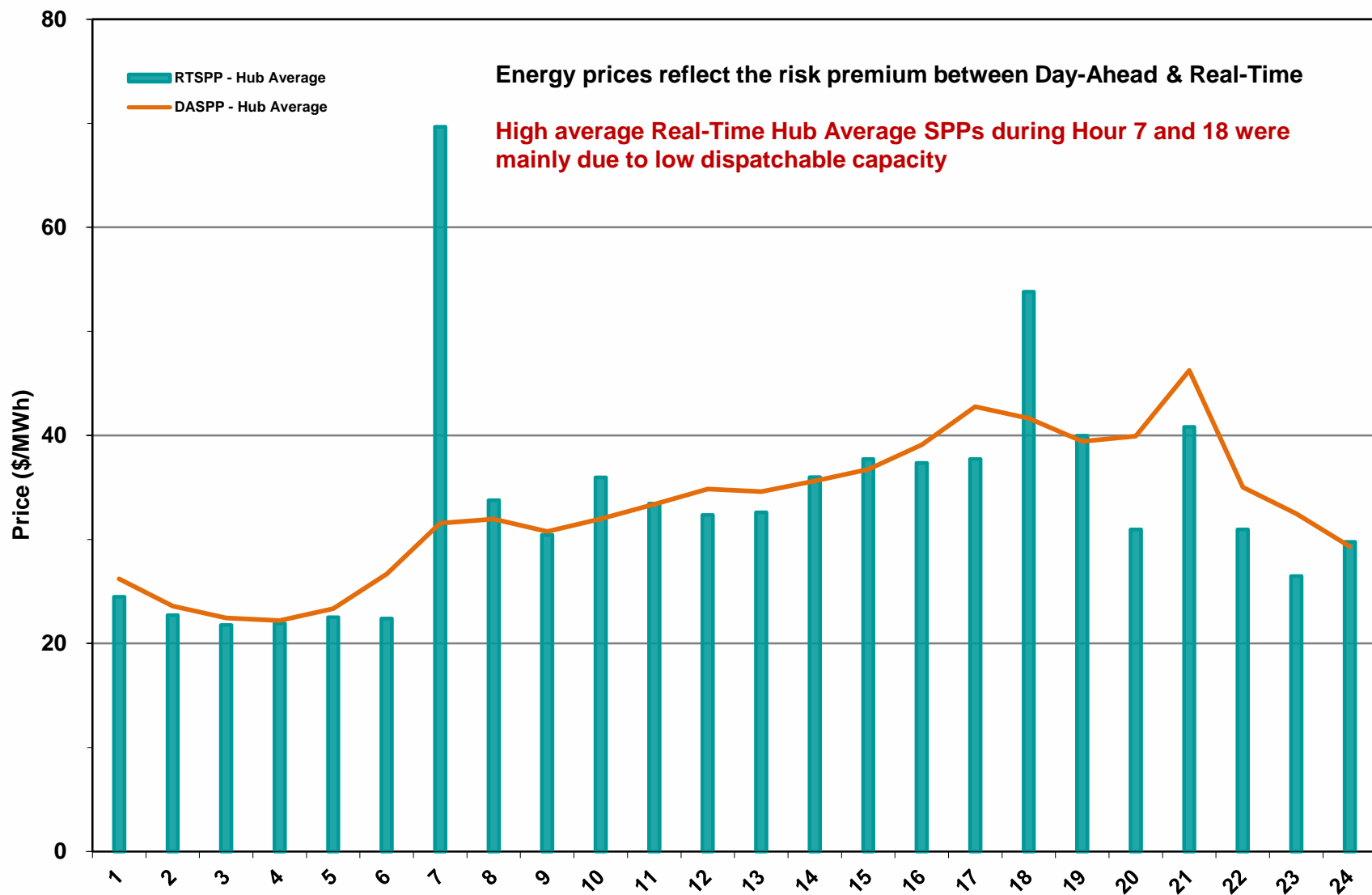
Day-Ahead Electricity And Ancillary Service Hourly Average Prices – April 2013



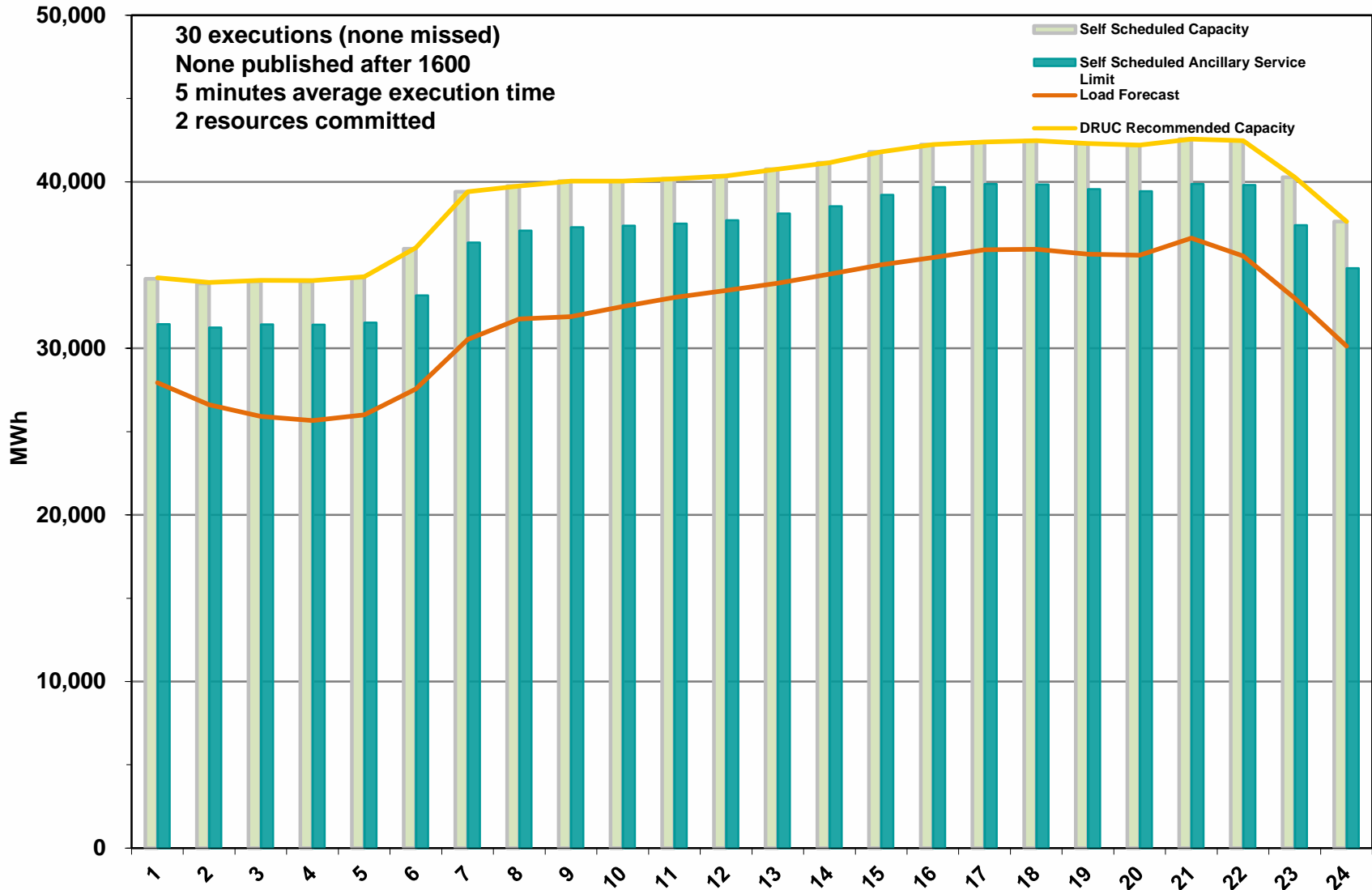
Day-Ahead Vs Real-Time Load Zone SPP (Hourly Average) – April 2013



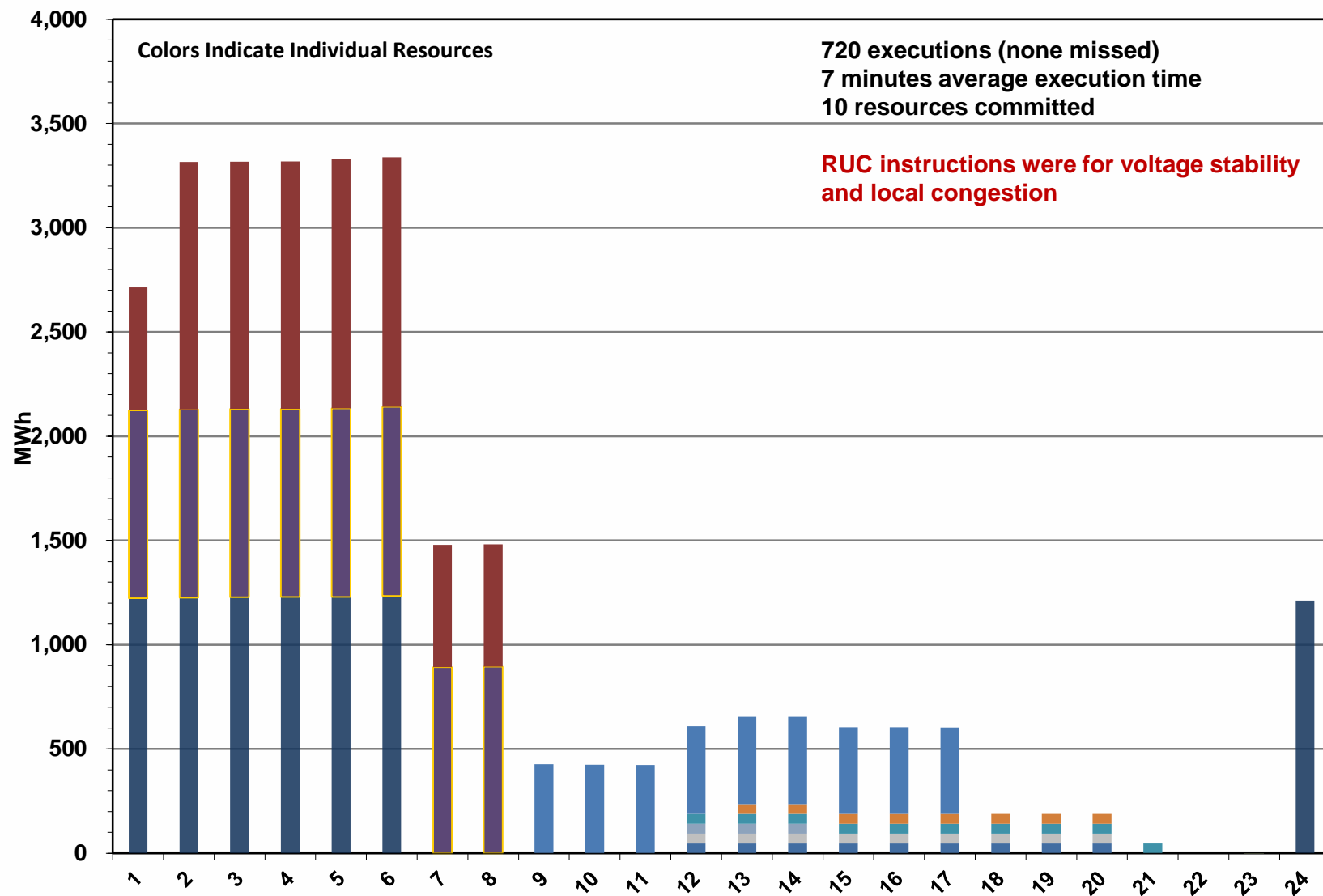
Day-Ahead Vs Real-Time Hub Average SPP (Hourly Average) – April 2013



DRUC Monthly Summary (Hourly Average) – April 2013



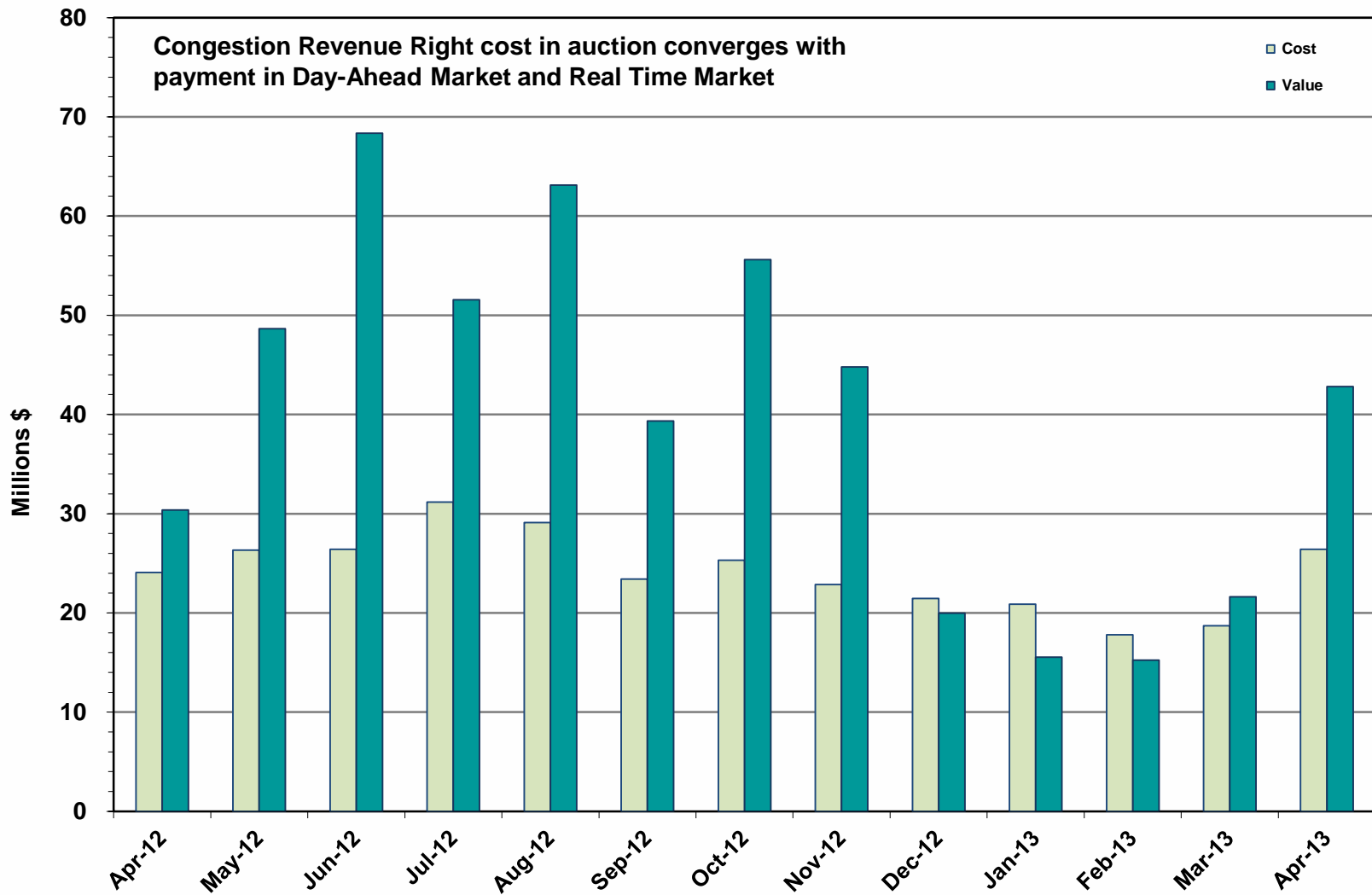
HRUC Monthly Summary – April 2013



Non-Spinning Reserve Service Deployment – April 2013

Deployment Start Time	Deployment End Time	Deployment Duration (Hours)	Max Deployment (MW)	Reason
4/5/13 6:57AM	4/5/13 8:00AM	1.05	532.6	Diminishing reserve levels

CRR Price Convergence – April 2013



ERS Procurement for February 2013 – May 2013

10-Minute ERS

	BH1	BH2	BH3	NBH
MW Procured	457.70	456.48	440.83	383.61
Average Price Per MW per Hour ¹	\$8.10	\$8.71	\$8.82	\$8.04

Note: One Generator procured with an average of 1.0 MW

30-Minute ERS Pilot

MW Procured	72.96	72.90	58.98	40.51
Clearing Price ²	\$7.81	\$8.60	\$8.90	\$7.80

BH1 - Business Hours 1 HE 0900 through 1300, Monday thru Friday except ERCOT Holidays
 BH2 - Business Hours 2 HE 1400 through 1600, Monday thru Friday except ERCOT Holidays
 BH3 - Business Hours 3 HE 1700 through 2000, Monday thru Friday except ERCOT Holidays
 NBH - Non-Business Hours All other hours

¹ Procured on a Pay-As-Offer basis

² Procured using a Clearing Price Mechanism

Reliability Services – April 2013

Reliability Unit Commitment (RUC) \$ in Millions

RUC Make-Whole Payments	(\$0.24)
-------------------------	----------

RUC Clawback Charges	\$0.01
----------------------	--------

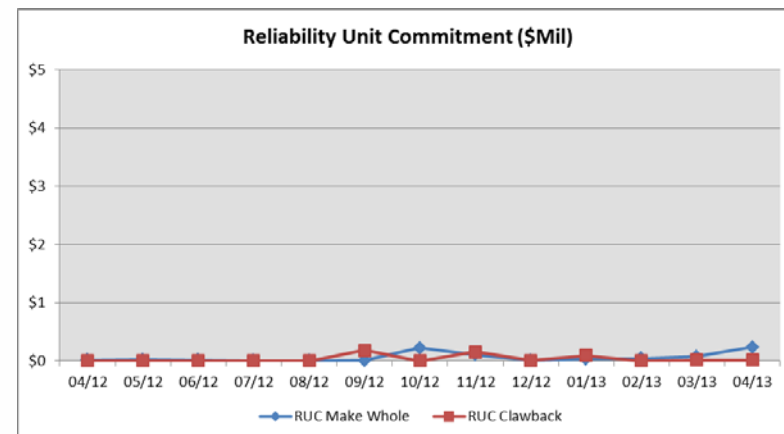
RUC Commitment Settlement	(\$0.23)
----------------------------------	-----------------

RUC Capacity Short Charges	\$0.24
----------------------------	--------

RUC Make-Whole Uplift	\$0.00
-----------------------	--------

RUC Commitment Cost Allocation	\$0.24
---------------------------------------	---------------

RUC Decommitment Payments	\$0.00
---------------------------	--------



RUC Cost continues to trend low.

RUC Costs for April 2013 were a charge of \$0.24M, compared to:

- A charge of \$0.08 in March 2013
- A charge of \$0.01 in April 2012

Ancillary Services – April 2013

Capacity Services	\$ in Millions
Regulation Up Service	\$3.77
Regulation Down Service	\$2.43
Responsive Reserve Service	\$16.7
Non-Spinning Reserve Service	\$3.95
Black Start Service	\$0.56
Voltage Services - Reactive Power	\$0.0
Voltage Services - Lost Opportunity	\$0.0
Total Capacity Service	\$27.43

Capacity Services costs were up from last month and are less than April 2012.

April 2013 cost was \$27.43M, compared to:

- A charge of \$21.99M in March 2013
- A charge of \$38.61M in April 2012

Energy Settlement – April 2013

Day-Ahead Market Energy Settlement

\$ in Millions

Energy Purchases	\$407.00
Point to Point Obligation Purchases	\$29.53
RMR Day-Ahead Revenue	\$0.00
Energy Sales	(\$397.97)
Day-Ahead Congestion Rent	\$38.56
Day-Ahead Market Make-Whole Payments	(\$0.10)

Day-Ahead Market and Real-Time energy settlement increased from last month and is higher than April 2012.

Real-Time Market Energy Settlement

\$ in Millions

Energy Imbalance at a Resource Node	(\$522.49)
Energy Imbalance at a Load Zone	\$702.42
Energy Imbalance at a Hub	(\$138.01)
Real Time Congestion from Self Schedules	\$1.20
Block Load Transfers and DC Ties	(\$3.80)
Impact to Revenue Neutrality	\$39.32
Emergency Energy Payments	(\$1.31)
Base Point Deviation Charges	\$0.33
Real-Time Metered Generation (MWh in millions)	23.30

Congestion Revenue Rights (CRR) – April 2013

Auction Disbursements	\$ in Millions
Annual Auction	(\$17.13)
Monthly Auction	(\$7.67)
Total Auction Revenue	(\$24.79)
Day-Ahead CRR Settlement	(\$42.51)
Day-Ahead CRR Short-Charges	\$6.00
Day-Ahead CRR Short-Charges Refunded	(\$2.10)
Real-Time CRR Settlement	(\$0.00)
Real-Time CRR Short-Charges	\$0.00
Real-Time CRR Short-Charges Refunded	(\$0.00)
Total CRR Proceeds	(\$38.60)
Day-Ahead Point to Point Obligations Settlement	\$29.53
Real-Time Point to Point Obligation Settlement	(\$44.88)
Net Point to Point Obligation Settlement	(\$15.35)

Congestion Revenue Rights were not fully funded. Excess funds were not available for distribution to load.

Distribution of balancing account funds to load for April 2013 was \$0, compared to:

- \$2.93M in March 2013
- \$3.86M in April 2012

Point to Point Obligations settled with a net gain of \$15.35 M.

Revenue Neutrality – April 2013

Revenue Neutrality Settlement

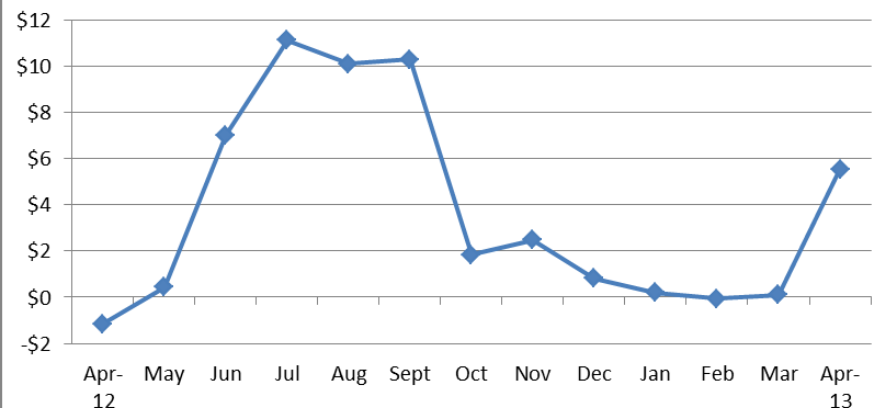
	\$ in Millions
Real-Time Point to Point Obligation Settlement	(\$44.88)
Real-Time Point to Point Options and Options with Refund Settlement	(\$0.00)
Real-Time Energy Imbalance Settlement	\$41.93
Real-Time Congestion from Self-Schedules Settlement	\$1.20
DC Tie & Block Load Transfer Settlement	(\$3.80)
Charge to Load	\$5.55

Revenue Neutrality charges to load increased compared to last month and April 2012.

April 2013 was a charge of \$5.55M, compared to:

- \$0.10M charge in March 2013
- \$1.16M credit in April 2012

Revenue Neutrality Uplift (\$Mil)



Net Uplift to Load – April 2013

Market-Based Uplifts

\$ in Millions

CRR Auction Revenue Disbursement Settlement (\$24.79)

Balancing Account Proceeds Settlement (\$0.00)

Net Reliability Unit Commitment Settlement \$0.23

Ancillary Services Settlement \$27.43

Reliability Must Run Services Settlement \$0.0

Reliability Must Run for Capacity \$0.0

Real-Time Revenue Neutrality Settlement \$5.55

Emergency Energy Settlement \$1.31

Base Point Deviation Settlement (\$0.33)

Total \$9.39

Fee Uplifts

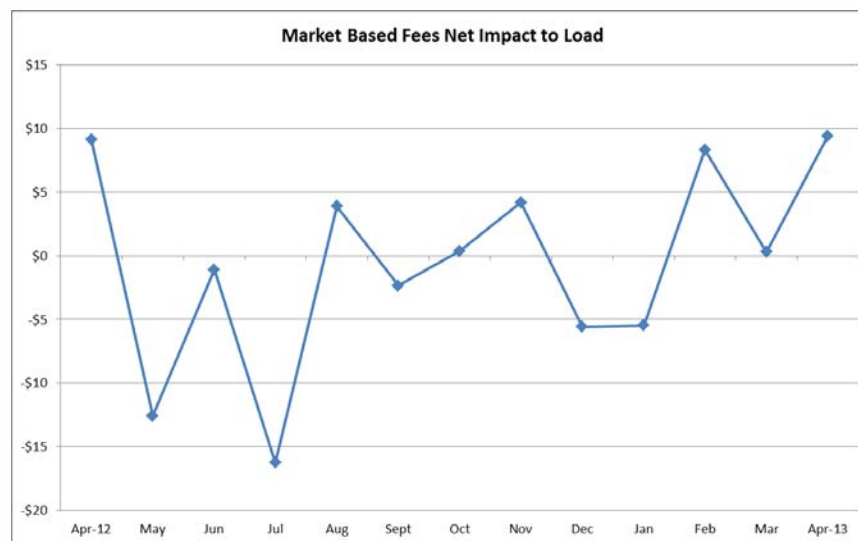
ERCOT Administrative Fee Settlement \$9.78

Net Uplift Charge to Load \$19.17

Net uplift to Load increased from last month and is very close to the charge from April of 2012.

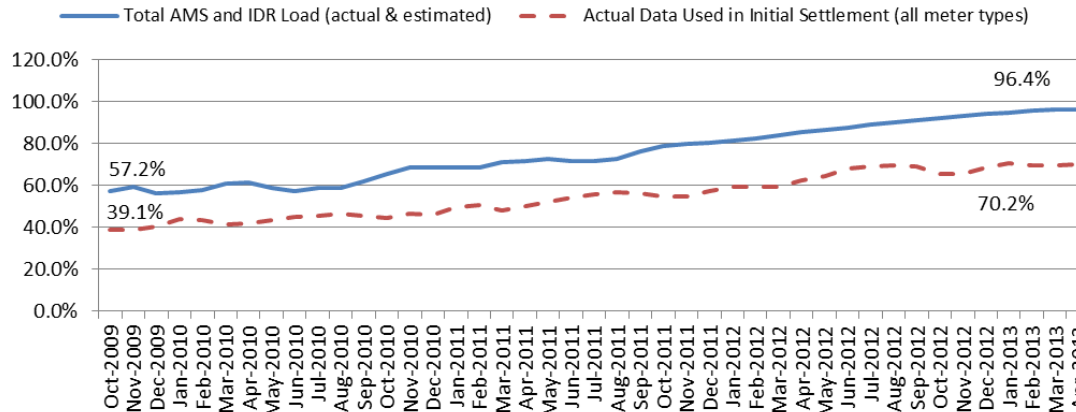
April 2013 was a charge of \$19.17M, compared to:

- A charge of \$10.03M in March 2013
- A charge of \$19.36M in April 2012



Advanced Meter Settlement Impacts – April 2013

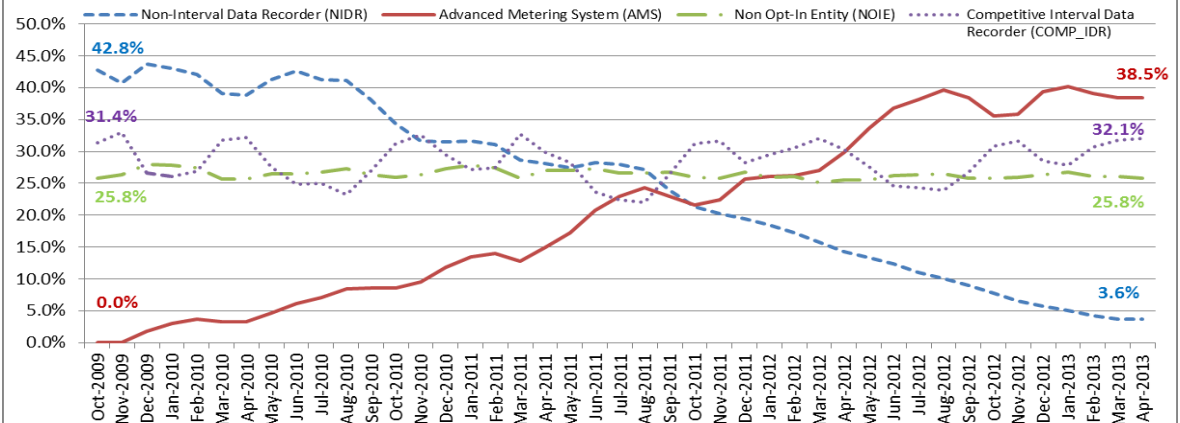
Percent Actual/Percent Interval Data Recorder (IDR)



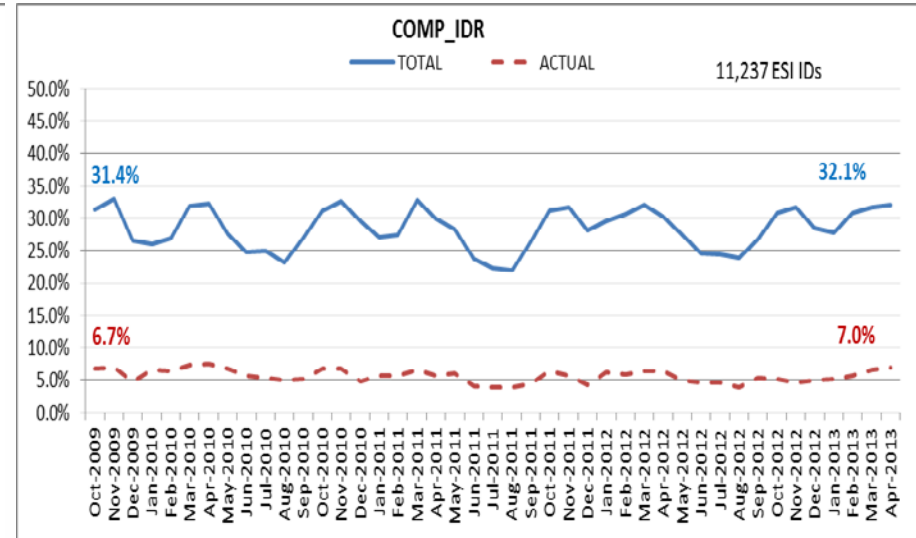
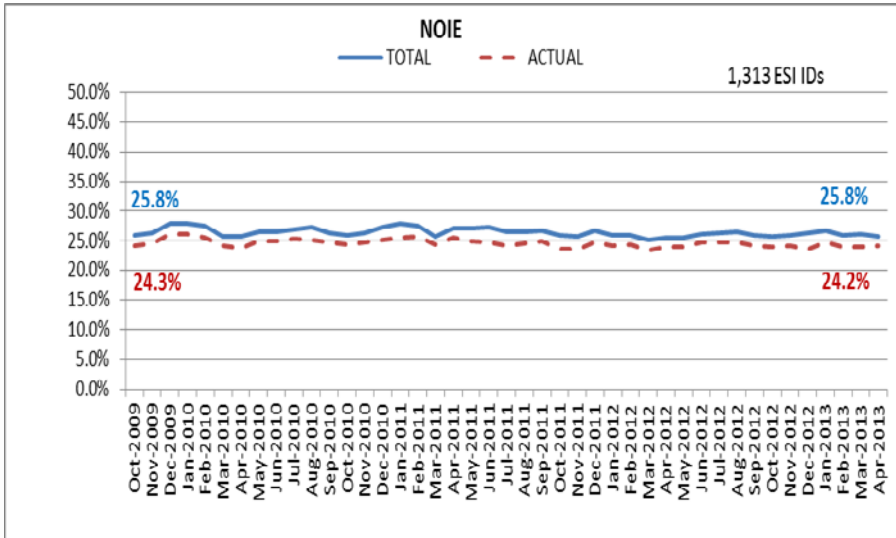
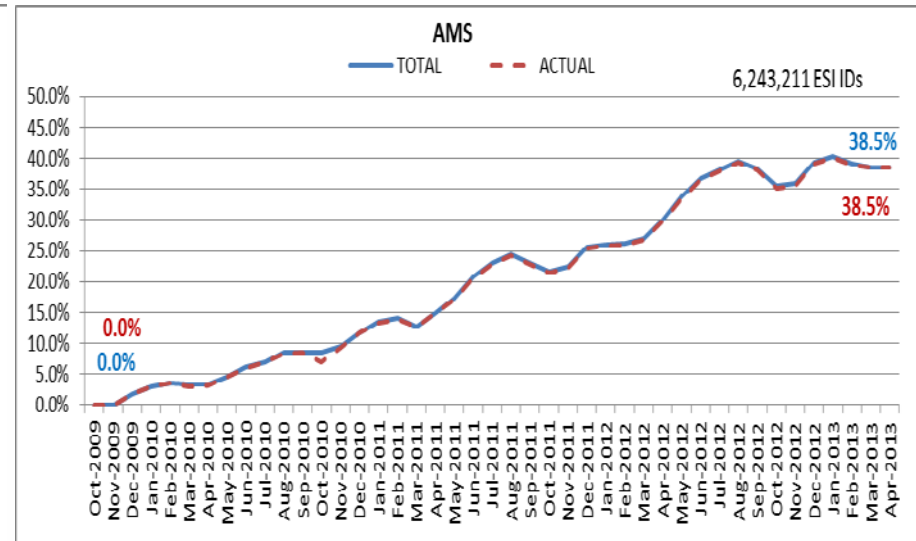
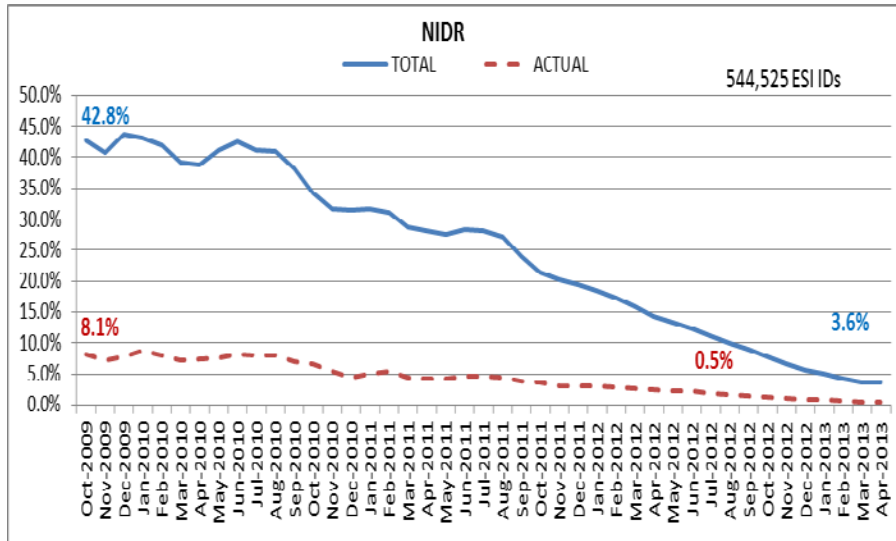
April 2013: At month end, settling 6.2M ESIIDs using Advanced Meter data.

April 2013: 96.4% of the load in ERCOT is settled with 15-min interval data (AMS, Competitive IDR, and NOIE IDR).

Percent of Load by Meter Type



ERCOT Wide Load Volumes by Meter Type – INITIAL Settlement – April 2013

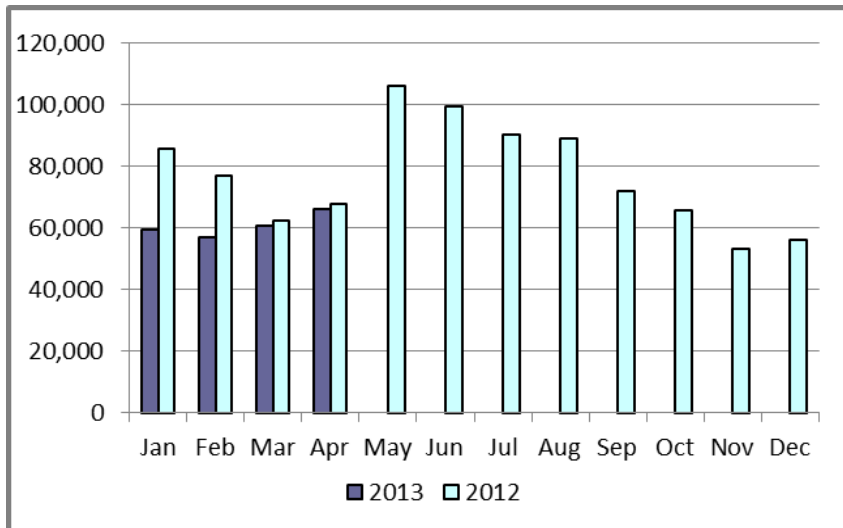


Retail Transaction Volumes – Summary – April 2013

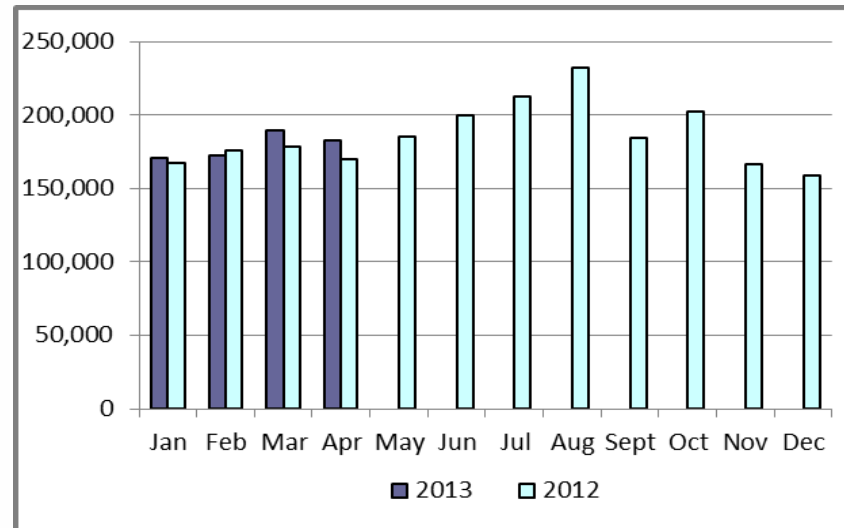
Transaction Type	Year-To-Date		Transactions Completed	
	Apr 2013	Apr 2012	Apr 2013	Apr 2012
Switches	242,739	292,911	66,258	67,724
Acquisition	126	0	0	0
Move - Ins	715,669	692,193	183,031	170,266
Move - Outs	349,968	332,973	91,376	83,126
Continuous Service Agreements (CSA)	144,703	177,091	32,761	50,883
Mass Transitions	0	0	0	0
Total	1,453,205	1,495,168	373,426	371,999
Total since June 1, 2001	51,344,731			

Retail Transaction Volumes – Summary – April 2013

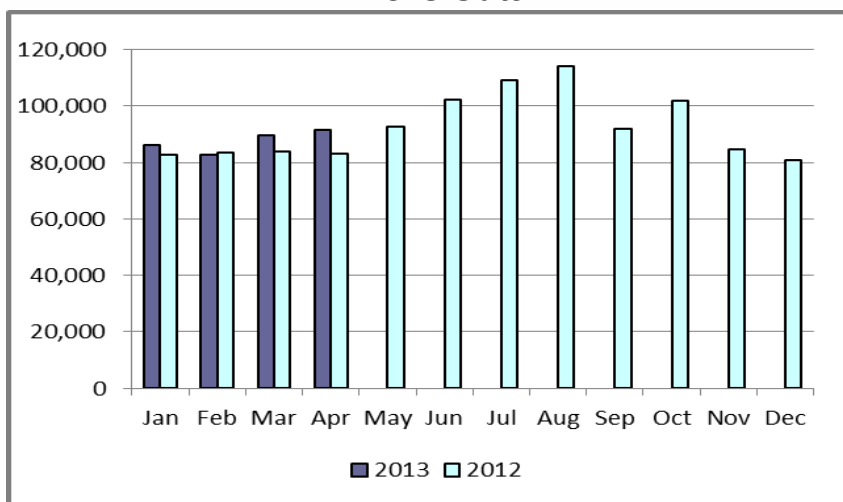
Switches/Acquisitions



Move-Ins



Move-Outs

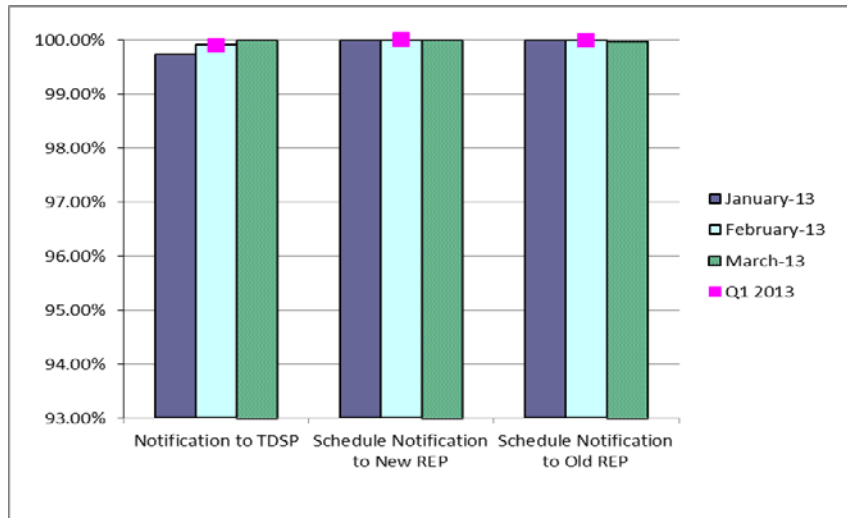


Mass Transition

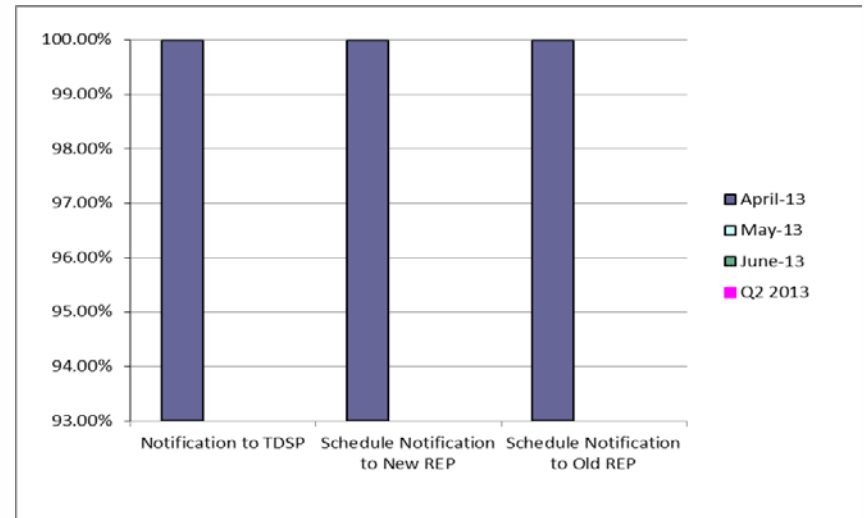


Retail Performance Measures – Switch – April 2013

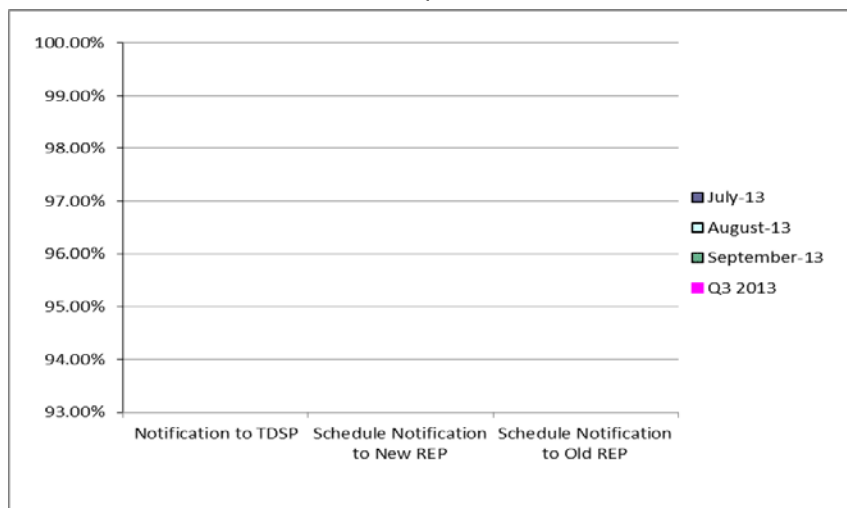
1st Quarter



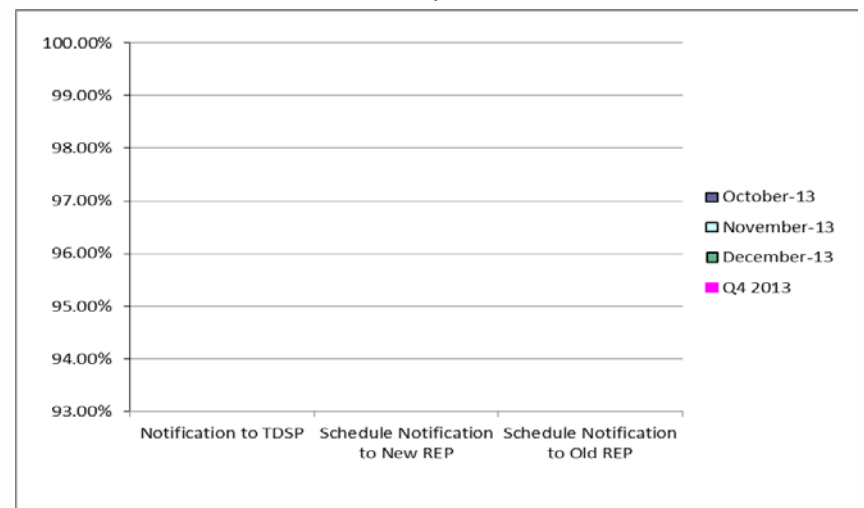
2nd Quarter



3rd Quarter

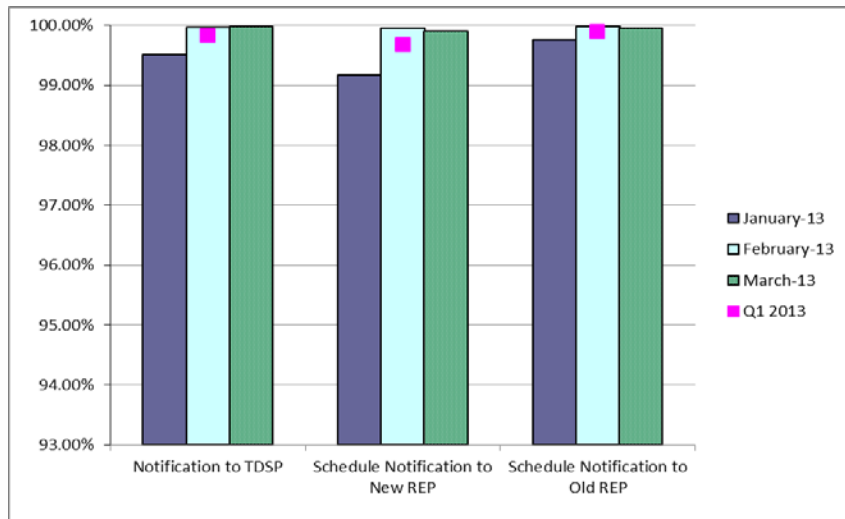


4th Quarter

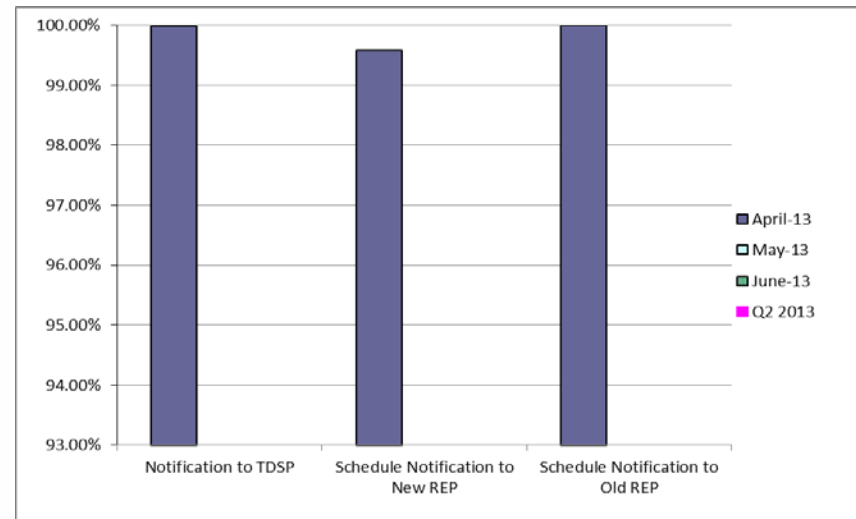


Retail Performance Measures (Same Day Move-In) – April 2013

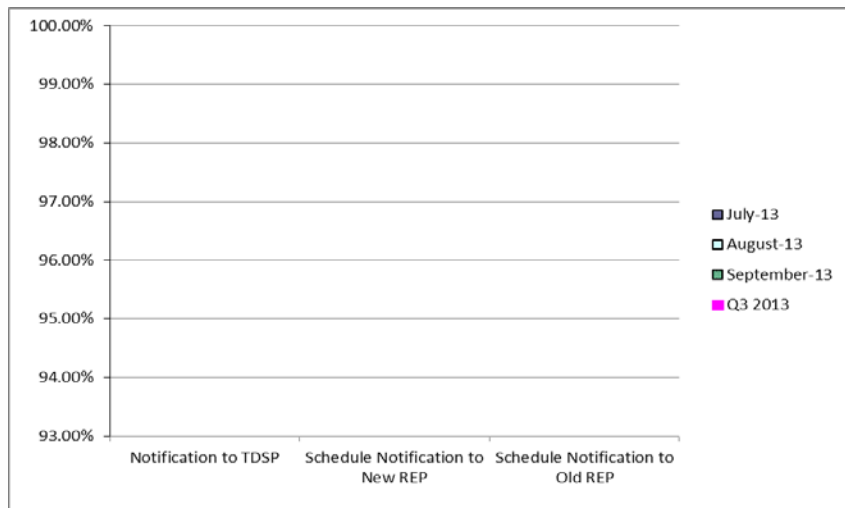
1st Quarter



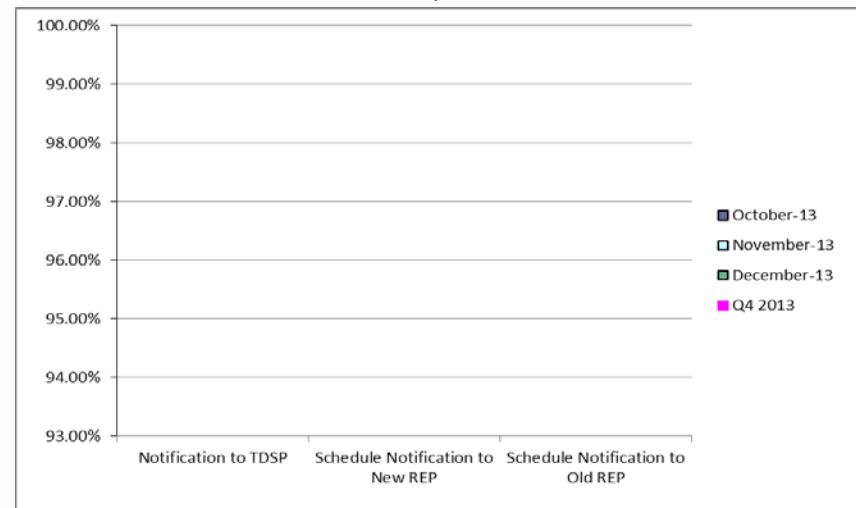
2nd Quarter



3rd Quarter

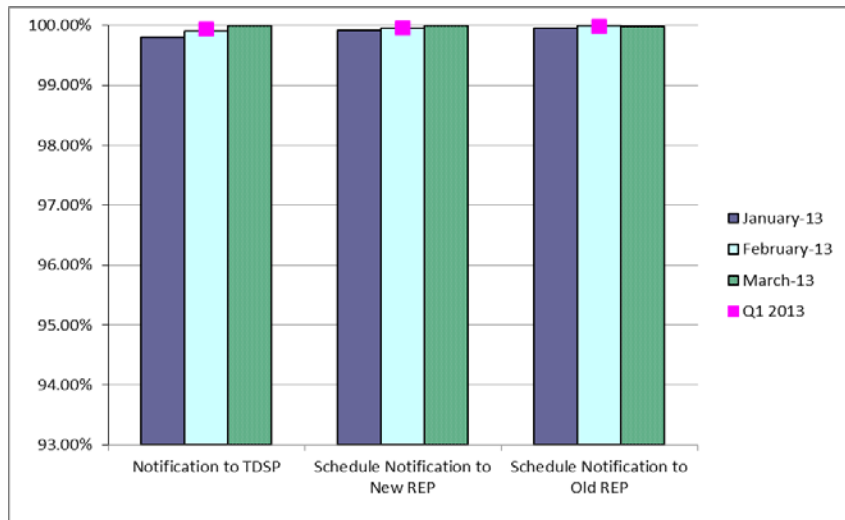


4th Quarter

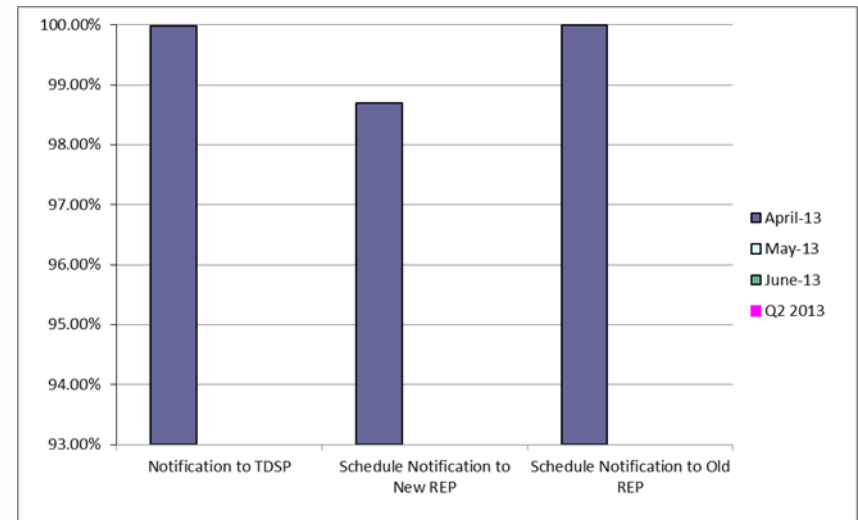


Retail Performance Measures (Standard Move-In) – April 2013

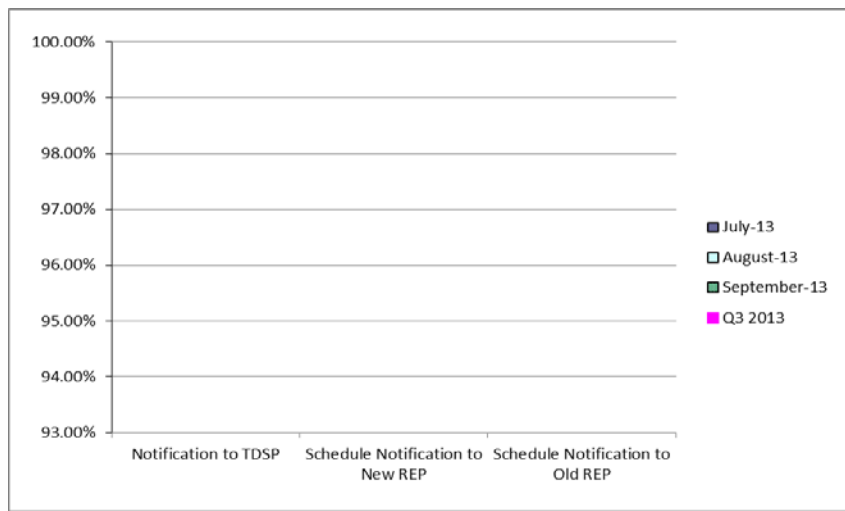
1st Quarter



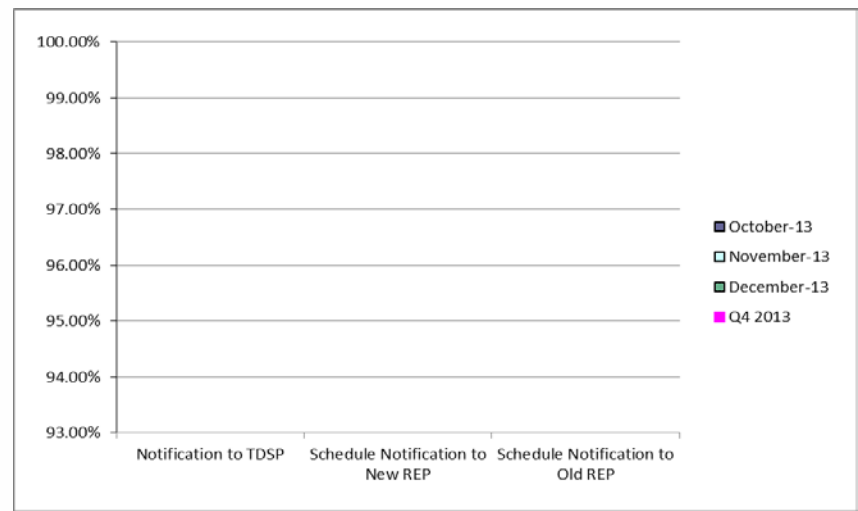
2nd Quarter



3rd Quarter



4th Quarter



Projects Report

Portfolio Stoplight Report (as of 5/6/2013)

Project Number	Project Name	Phase	Baseline Phase Start	Baseline Phase Finish or Go-Live	Scheduled Phase Finish or Go-Live	Schedule Status	Sum of 2013 Budgets	2013 Forecast Spend	2013 Approved Spend	2014 Forecast Spend	2013 Variance	Sum of Total Budgets	Total Forecast Spend	Total Variance
PROJECTS IN FLIGHT (Count = 56) Sorted by Phase / Project Num							\$ 16,908,338	\$ 16,157,978	\$ 11,705,300	\$ 7,345,094	10%	\$ 35,210,809	\$ 33,936,651	3%
097-01	ABB MMS OS Technology Refresh	Initiation									0%			0%
098-01	EPG Synchrophasor Upgrade	Initiation									0%			0%
099-01	Moody's Analytics	Initiation									-1%			-1%
101-01	Emergency Notification System Hardware Refresh	Initiation									4%			3%
TBD	NAS Data Storage / File Synchronization - EMMS System and Applications	Initiation									0%			0%
NPRR207	Unit Deselection	Initiation									0%			0%
NPRR272	Definition and Participation of Quick Start Generation Resources	Initiation									100%			100%
NPRR385	Negative Price Floor	Initiation									35%			35%
052-01	EMS Upgrade	Planning	7/25/2012	3/27/2013	3/27/2013	0%					8%			0%
059-01	Security Information and Event Management (SIEM) Upgrade	Planning	11/21/2012	5/8/2013	5/8/2013	0%					0%			3%
065-01	NMMS Upgrade	Planning	5/1/2013	7/31/2013	7/31/2013	0%					2%			1%
066-01	Planning Site Transition to MIS	Planning	1/9/2013	3/25/2013	6/19/2013	3 -114%					2%			3%
070-01	Linux Configuration Management Tool	Planning	1/24/2013	6/26/2013	6/26/2013	0%					0%			0%
071-01	Windows Server Systems Management	Planning	1/23/2013	6/26/2013	6/27/2013	0%					0%			0%
077-01	Contract Lifecycle Management	Planning	2/13/2013	6/12/2013	6/12/2013	0%					-1%			0%
081-01	Additional Resource Data for Outage Scheduler	Planning	3/4/2013	5/22/2013	5/22/2013	0%					25%			24%
083-01	Centralized Application Log Management	Planning	3/6/2013	5/15/2013	5/16/2013	-1%					0%			0%
089-01	Information Technology Change Management	Planning	4/10/2013	5/29/2013	5/28/2013	2%					8%			8%
095-01	Mobile Application Enhancement	Planning	4/3/2013	5/22/2013	5/22/2013	0%					5%			5%
096-01	Backup Software Strategy and Proposed License Cost Reduction	Planning	4/10/2013	5/22/2013	5/22/2013	0%					-2%			-2%
NPRR153	Generation Resource Fixed Quantity Block Offer	Planning	4/10/2013	5/24/2013	5/24/2013	0%					18%			18%
NPRR327	State Estimator Data Redaction Methodology	On Hold	12/5/2012	2/12/2013		4					4%			9%
NPRR425	Creation of a WGR Group for GREDP and Base Point Deviation Evaluation	Planning	3/13/2013	5/15/2013	5/24/2013	3 -14%					24%			23%
NPRR457	Daily Update of New ESI IDs and AMS Meter and Switch Hold Indicators Changes	Planning	4/10/2013	5/29/2013	5/29/2013	0%					21%			21%
NPRR476	Market Submitted Energy Offer Curves Disclosures	Planning	4/10/2013	6/12/2013	6/12/2013	0%					9%			8%
NPRR484	Revisions to Congestion Revenue Rights Credit Calculations and Payments	Planning	4/10/2013	5/29/2013	5/29/2013	0%					39%			0%
SCR773	Addition of Regulation Feedback to Generation to be Dispatched Calculation	Planning	5/1/2013	5/7/2013	5/7/2013	0%					0%			0%
016-01	ADP-IDM Interface	On Hold	5/23/2012			4								14%



Portfolio Stoplight Report (as of 5/6/2013)

Project Number	Project Name	Phase	Baseline Phase Start	Baseline Phase Finish or Go-Live	Scheduled Phase Finish or Go-Live	Schedule Status	Sum of 2013 Budgets	2013 Forecast Spend	2013 Approved Spend	2014 Forecast Spend	2013 Variance	Sum of Total Budgets	Total Forecast Spend	Total Variance
PROJECTS IN FLIGHT (Count = 56) Sorted by Phase / Project Num							\$ 16,908,338	\$ 16,157,978	\$ 11,705,300	\$ 7,345,094	10%	\$ 35,210,809	\$ 33,936,651	3%
010-02	MarkeTrak Upgrade	Execution	12/12/2012	6/8/2013	6/11/2013	-1%					8%			7%
017-01	Oracle 11g Upgrade	Execution	10/10/2012	7/26/2013	7/26/2013	0%					18%			20%
038-01	Macomber Map NERC SA/Compliance Enhancements	Execution	9/19/2012	12/7/2012	6/13/2013	3 -237%					-1%			-2%
042-01	CRR Upgrade to v12.3	Execution	5/16/2012	4/1/2013	4/1/2013	0%					63%			34%
047-01	CMSDK/MIR Replacement	Execution	4/24/2013	12/8/2013	11/26/2013	5%					1%			1%
048-01	TSAT Wind Model	Execution	8/16/2012	4/25/2013	4/25/2013	0%					-6%			11%
055-01	Siebel Upgrade 8.x	Execution	3/13/2013	7/28/2013	7/29/2013	0%					0%			-1%
057-01	EPS Metering DB Redesign	Execution	4/17/2013	9/6/2013	5/6/2013	86%					5%			4%
067-01	Physical Security Upgrade	Execution	2/13/2013	7/26/2013	7/26/2013	0%					10%			10%
072-01	OSI PI Upgrades - EMS Production	Execution	4/17/2013	10/16/2013	10/11/2013	2%					31%			31%
074-01	Mobile Device Management - POC	Execution	3/13/2013	5/14/2013	5/14/2013	0%					-4%			-1%
075-01	Operator Data Display	Execution	4/10/2013	9/29/2013	9/29/2013	0%					8%			10%
088-0x	Capital Efficiencies and Enhancements - 2013	Execution	8/16/2012	12/31/2013	12/31/2013	0%					0%			0%
10052_01	Settlement System Upgrade	Execution	1/25/2012	12/23/2014	10/10/2014	6%					0%			-4%
90006_02	Information Lifecycle Mgmt - Mkt Systems, Archive, Reporting	Execution	4/22/2011	6/26/2014	5/13/2013	35%					11%			-1%
2013 PC	Program Control - 2013	Execution	8/16/2012	12/31/2013	12/31/2013	0%					0%			0%
99913	Minor Cap - 2013	Execution	1/1/2013	12/31/2013	12/31/2013	0%					-24%		6 -24%	
NPRR393	SCED Constraint Management Transparency	Execution	3/13/2013	6/13/2013	8/1/2013	3 -53%					25%			25%
NPRR416	Removal of the RUC Clawback Charge for Resources Other than RMR Units	Execution	4/10/2013	9/27/2013	9/26/2013	0%					37%			37%
NPRR456	Clarification of Definition of Electrically Similar Settlement Points and Heuristic Pricing Posting	Execution	2/14/2013	4/25/2013	4/25/2013	0%					34%			34%
NPRR461	Energy Storage Settlements Consistent with PUCT Project 39917	Execution	3/13/2013	7/30/2013	7/30/2013	0%					7%			8%
NPRR463	CRR Auction Structure Enhancements	Execution	12/20/2012	4/5/2013	4/1/2013	3%					40%			32%
NPRR479	Daily Net Outage MW	Execution	4/10/2013	8/1/2013	8/1/2013	0%					0%			0%
NPRR481	Report of Hourly Actual System Load by Weather Zone	Execution	4/10/2013	6/13/2013	6/13/2013	0%					0%			0%
NPRR520	Real-Time Mitigation Rules and Creation of a Real-Time Constraint Competitiveness Test	Execution	5/1/2013	8/1/2013	8/1/2013	0%					0%			0%
NOGRR093	Synchronization with NPRR365	Execution	3/27/2013	6/14/2013	6/14/2013	0%					-2%			-2%
SCR760	Recommended Changes Needed for Information Model Mgr and Topology Processor for Planning Models	Execution	8/25/2011	7/12/2013	7/12/2013	0%					34%			21%
SCR770	Revision to Outage Scheduling Entry for Resource Maintenance Outage Level Designation	Execution	3/14/2013	9/27/2013	9/27/2013	0%					19%			20%



Portfolio Stoplight Report (as of 5/6/2013)

Project Number	Project Name	Phase	Forecast Start Date					Sum of 2013 Budgets	2013 Forecast Spend	2013 Approved Spend	2014 Forecast Spend	2013 Variance	Sum of Total Budgets	Total Forecast Spend	Total Variance
PROJECTS NOT YET STARTED (Count = 31)				Sorted by Rank				\$ 3,637,165	\$ 2,963,117	\$ -	\$ 4,983,468		\$ 8,620,633	\$ 7,946,585	
TBD	Disaster Recovery: S&B, RTL, MDT	Not Started	May 2013												
TBD	MP Online Data Entry - Ph 1	Not Started	May 2013												
NPRR407	Credit Monitoring Posting Requirements - CRR Portion	Not Started	May 2013												
NOGRR101	Market Notice for DC-TIE Outage Information	Not Started	May 2013												
SCR756	MarkeTrak Enhancements - Remaining SCR756 Items	Not Started	Jun 2013												
TBD	Alstom Load Forecasting Upgrade	Not Started	Jun 2013												
TBD	IBM AIX Operating System Upgrades	Not Started	Jun 2013												
TBD	Mobile Device Management	Not Started	Jun 2013												
TBD	Quality Center Upgrade	Not Started	Jun 2013												
NPRR210	Wind Forecasting Change to P50, Sync with PRR841	Not Started	Jul 2013												
NPRR492	Addition of System Lambda Information	Not Started	Jul 2013												
NOGRR105	Generation Resource Frequency Response Test Procedure	Not Started	Jul 2013												
TBD	Dev Hardware Refresh and Virtualization Expansion	Not Started	Jul 2013												
TBD	Symposium Call Center Replacement	Not Started	Jul 2013												
NPRR240	Proxy Energy Offer Curve	Not Started	Aug 2013												
TBD	Lawson Security	Not Started	Aug 2013												
TBD	Taylor Control Room Upgrade	Not Started	Aug 2013												
NOGRR084	Daily Grid Operations Summary Report	Not Started	Sep 2013												
SCR771	ERCOT System Change Allowing Independent Master QSE to Represent Split Generation Resources	Not Started	Sep 2013												
TBD	Enterprise Vault Upgrade	Not Started	Sep 2013												
TBD	Intrusion Prevention System	Not Started	Sep 2013												
TBD	SQL Server 2012 Upgrade / Cluster Consolidation	Not Started	Sep 2013												
NPRR256	Sync with PRR787, Add Non-Compliance Language to QSE Performance Standards	Not Started	Oct 2013												
TBD	Email Redundancy	Not Started	Oct 2013												
TBD	Net Backup Architecture Redesign	Not Started	Oct 2013												
TBD	Voice Over IP (VOIP) Replacement for PBX	Not Started	Oct 2013												
SCR769	CRRRAH Digital Certificate New Role for Read Only Access	Not Started	Nov 2013												
NPRR493	Half-Hour RUC Clawback	Not Started	TBD												
NPRR495	Changes to Ancillary Services Capacity Monitor	Not Started	TBD												
TBD	ERCOT Native Load Calculation	Not Started	TBD												
TBD	OTS Enhancements	Not Started	TBD												



Portfolio Stoplight Report (as of 5/6/2013)

Project Number	Project Name	Phase	Baseline Execution Phase Start	Baseline Go-Live Target	Actual Go-Live Date	Schedule Status	Sum of 2013 Budgets	2013 Forecast Spend	2013 Approved Spend	2014 Forecast Spend	2013 Variance	Sum of Total Budgets	Total Forecast Spend	Total Variance
PROJECTS COMPLETED IN 2013 (Count = 17) Sorted by Project Number							\$ 173,582	\$ 167,671	\$ 173,582	\$ -	3%	\$ 4,073,151	\$ 3,841,052	5%
006-01	SAGE (System Administrator Gateway Environment)	Closing	5/31/2012	12/19/2012	1/3/2013	1 -7%					49%			5%
NPRR260	Providing Access to MIS Secure Area to MIS Registered Users	Closing	10/3/2012	2/15/2013	2/15/2013	0%					3 -55%			20%
NPRR377	Alternate Inputs to Base Point Deviation Charge	Closing	9/26/2012	2/15/2013	2/15/2013	0%					74%			28%
NPRR313	Updating the Term Resource Plan to Current Operating Plan / Availability Plan	Complete	8/22/2012	2/15/2013	2/15/2013	0%					42%			30%
NPRR322	Real-Time PTP Option Modeling	Complete	8/1/2012	2/15/2013	2/15/2013	0%					27%			1%
NPRR347 NPRR400	Implementation of NPRR347 and NPRR400	Complete	3/29/2012	2/15/2013	2/15/2013	0%					55%		3 -13%	
NPRR397	Balance of the Day Ancillary Service Market	Complete	9/19/2012	2/15/2013	2/15/2013	0%					41%			35%
NPRR407	Credit Monitoring Posting Requirements - MMS/CDR Portion	Complete	9/19/2012	2/15/2013	2/15/2013	0%					43%			20%
NPRR469	Modifications to CCTs	Complete	9/19/2012	2/15/2013	2/15/2013	0%					50%			21%
SCR768	Automatic Non-Spin Redeployment and Deployment Based on Resource Availability	Complete	9/19/2012	2/15/2013	2/15/2013	0%					65%			5%
009-01	Compliance Software Tool	Complete	12/1/2011	11/30/2012	12/19/2012	1 -5%					2 -100%			20%
019-01	ERCOT Website Enhancements - 2012	Complete	3/8/2012	12/26/2012	4/24/2013	1 -40%								1 -40%
020-01	CIM Upgrade for NMMS	Complete	6/14/2012	2/15/2013	2/15/2013	0%					12%			22%
021-01	Incremental Update Capability - Phase 1	Complete	3/23/2012	2/6/2013	2/13/2013	-2%					0%			63%
030-01	ITRON Load Forecast	Complete	6/27/2012	2/15/2013	2/15/2013	0%					5 -34%			-1%
043-01	Met Center Lease Reconfiguration	Complete	9/12/2012	12/19/2012	12/19/2012	0%					87%			10%
046-01	MAI Conversion to IGRID	Complete	8/2/2012	2/15/2013	2/15/2013	0%					3 -357%			0%

SUMMARY

						Sum of 2013 Budgets	2013 Forecast Spend	2013 Approved Spend	2014 Forecast Spend		Sum of Total Budgets	Total Forecast Spend	
5%	KPI Budget Measure - Execution/Completed Projects					Projects In Flight \$ 16,908,338	\$ 16,157,978	\$ 11,705,300	\$ 7,345,094		\$ 35,210,809	\$ 33,936,651	
						Projects Not Yet Started \$ 3,637,165	TBD	\$ -	\$ 4,983,468		\$ 8,620,633	TBD	
6%	KPI Schedule Measure - Execution/Completed Projects					Projects Completed \$ 173,582	\$ 167,671	\$ 173,582	\$ -		\$ 4,073,151	\$ 3,841,052	
						TOTAL	\$ 20,719,084	\$ 16,325,649	\$ 11,878,882	\$ 12,328,562	\$ 47,904,593	\$ 37,777,703	

Project Funding Note:

Re-categorized \$1 million of vendor services from the "Hardware and Software Maintenance and Licensing" budget which increased the PPL Budget from \$15 to \$16 million

Project Funding \$ 16,000,000 \$ 20,000,000

Calculation Definitions

Schedule: Count of Execution and Completed Projects with Variance >= 10%
/ Count of Execution and Completed Projects

Budget: (Total Budget of Execution and Completed Projects
- Total Forecast Spend of Execution and Completed Projects)
/ Total Budget of Execution and Completed Projects

Footnotes

- 1 Current phase took longer than expected, resulting in additional funding and/or time required
- 2 Labor hours planned for 2012 occurred in 2013
- 3 Current phase requiring more labor than expected, resulting in additional funding and/or time required
- 4 Project temporarily placed on hold
- 5 Delay in vendor payment shifted cost from 2012 to 2013
- 6 Current demand exceeds budget
- 7
- 8
- 9



ERCOT Public