

To the Public Utility Commission of Texas

## ERCOT Wholesale Electricity Market Monthly Report

Report Date: Tuesday, April 16, 2013

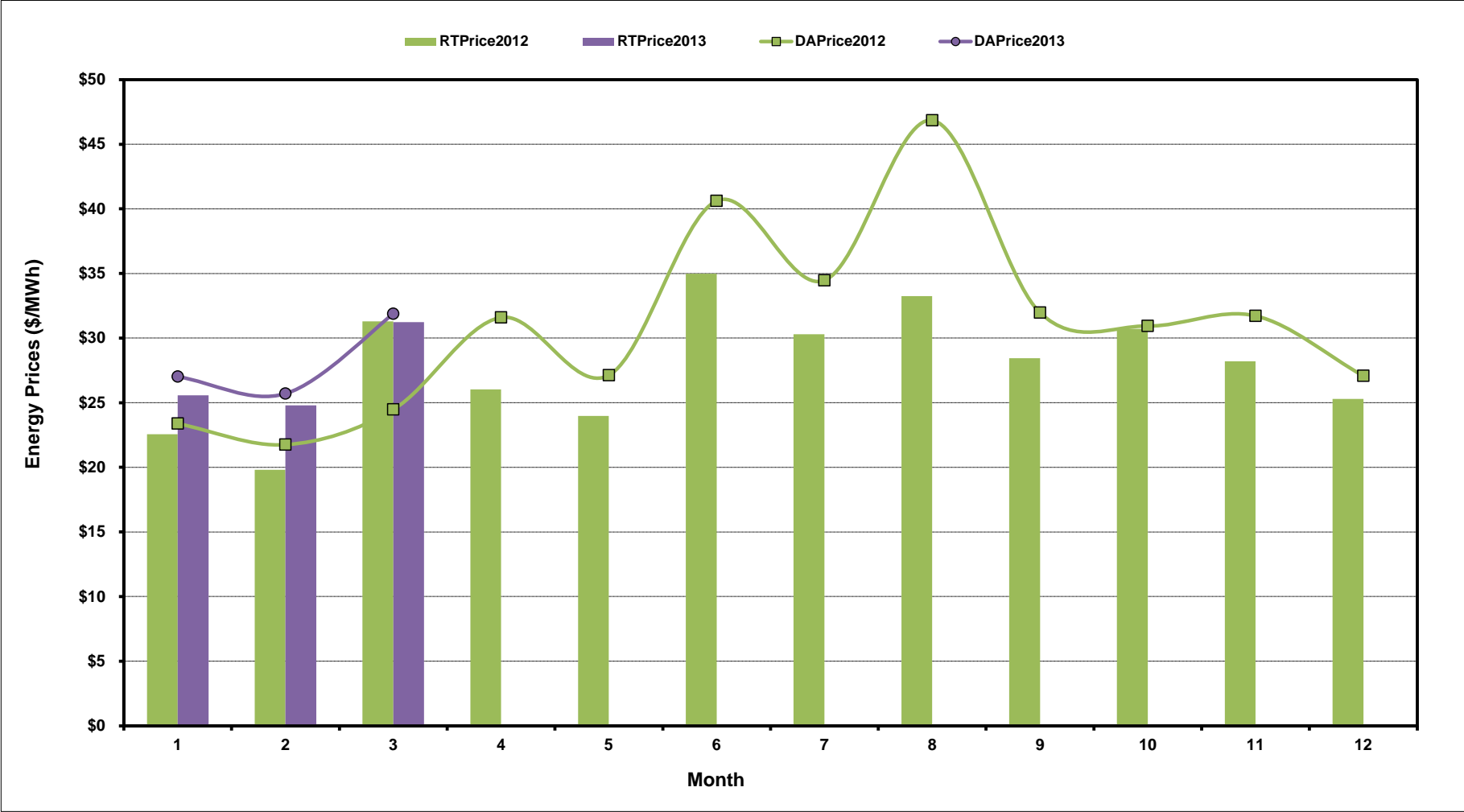
Report By: Potomac Economics, LTD  
Independent Market Monitor

### Contents

1	ERCOT-wide AVG Energy Prices DA vs. RT	<a href="#">chart</a>
2	Load Zone Load Statistics	<a href="#">chart</a>
3	Load Zone Energy Prices DA vs RT	<a href="#">chart</a>
4	ERCOT-wide Implied Heat Rates DA vs RT	<a href="#">chart</a>
5	Load Zone Implied Heat Rates DA vs RT	<a href="#">chart</a>
6	Ancillary Services Required MW by Month	<a href="#">chart</a>
7	Ancillary Services Required MW by Hour Ending	<a href="#">chart</a>
8	Ancillary Services Prices by Month	<a href="#">chart</a>
9	A/S Costs per MWh of Load by Month	<a href="#">chart</a>
10	Ercot-wide Peaker Net Margin	<a href="#">chart</a>
11	DA Load Forecast Errors by Hour Ending	<a href="#">chart</a>
12	Average Wind Production by Hour Ending	<a href="#">chart</a>
13	RT Constraint Rankings	
	- Top 10 Constraints by Congestion Rent	<a href="#">chart</a>
	- Top 10 Constraints by Binding Frequency	<a href="#">chart</a>
14	DA Constraint Rankings	
	- Top 10 Constraints by Congestion Rent	<a href="#">chart</a>
	- Top 10 Constraints by Binding Frequency	<a href="#">chart</a>
15	CRR Auction Prices Rankings	
	- Top 10 PTP Obligations	<a href="#">chart</a>
	- Top 10 PTP Options	<a href="#">chart</a>

# ERCOT-Wide Average Energy Prices DA vs RT

(avg. DA & RT SPPs weighted by Real Time Settlement Loads)



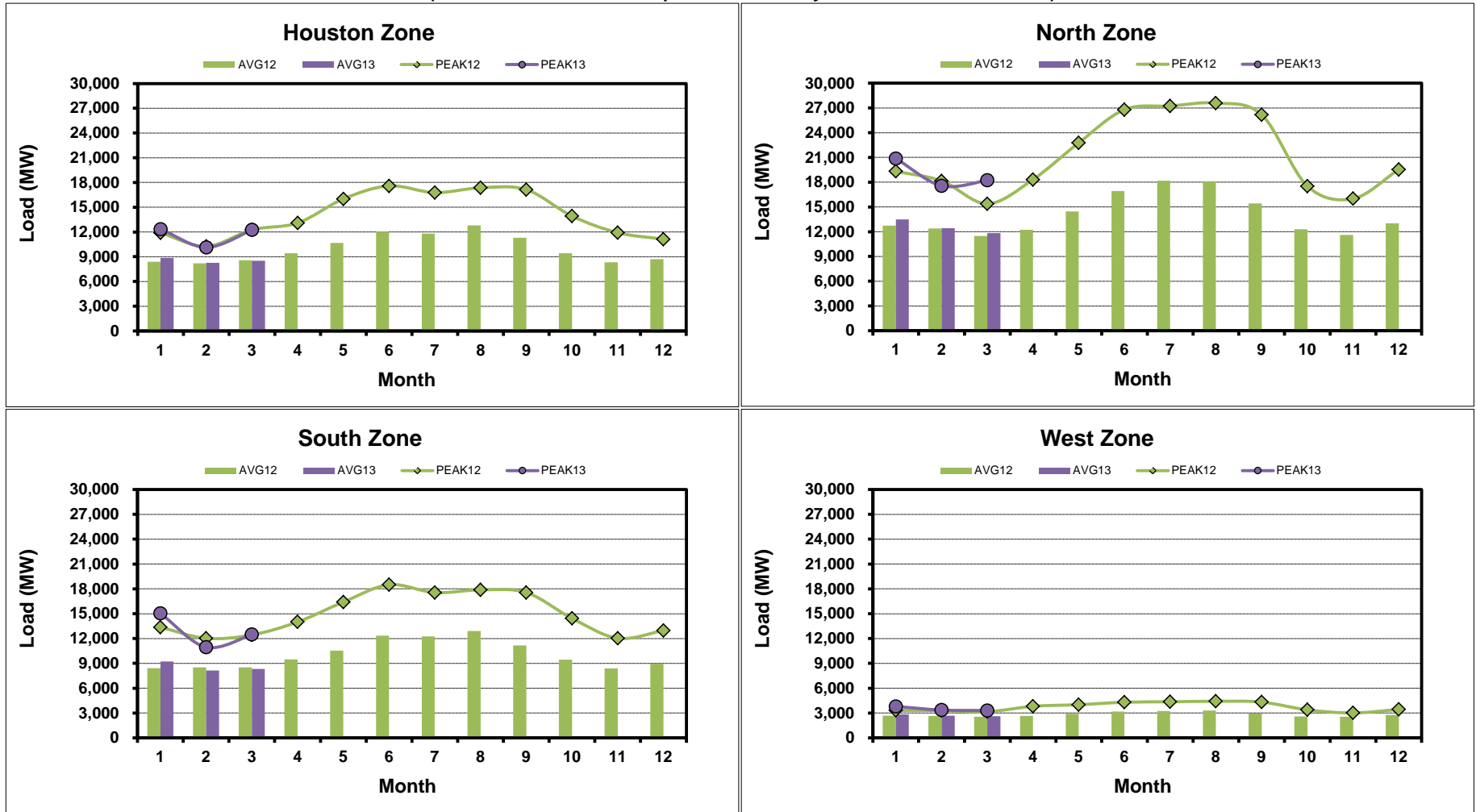
[Home <<](#)

[previous <<](#)

[next >>](#)

# Load Zone Load Statistics

(Nodal load zone made comparable to zonal sytem Load Zone definitions\*)



[Home <<](#)

[previous <<](#)

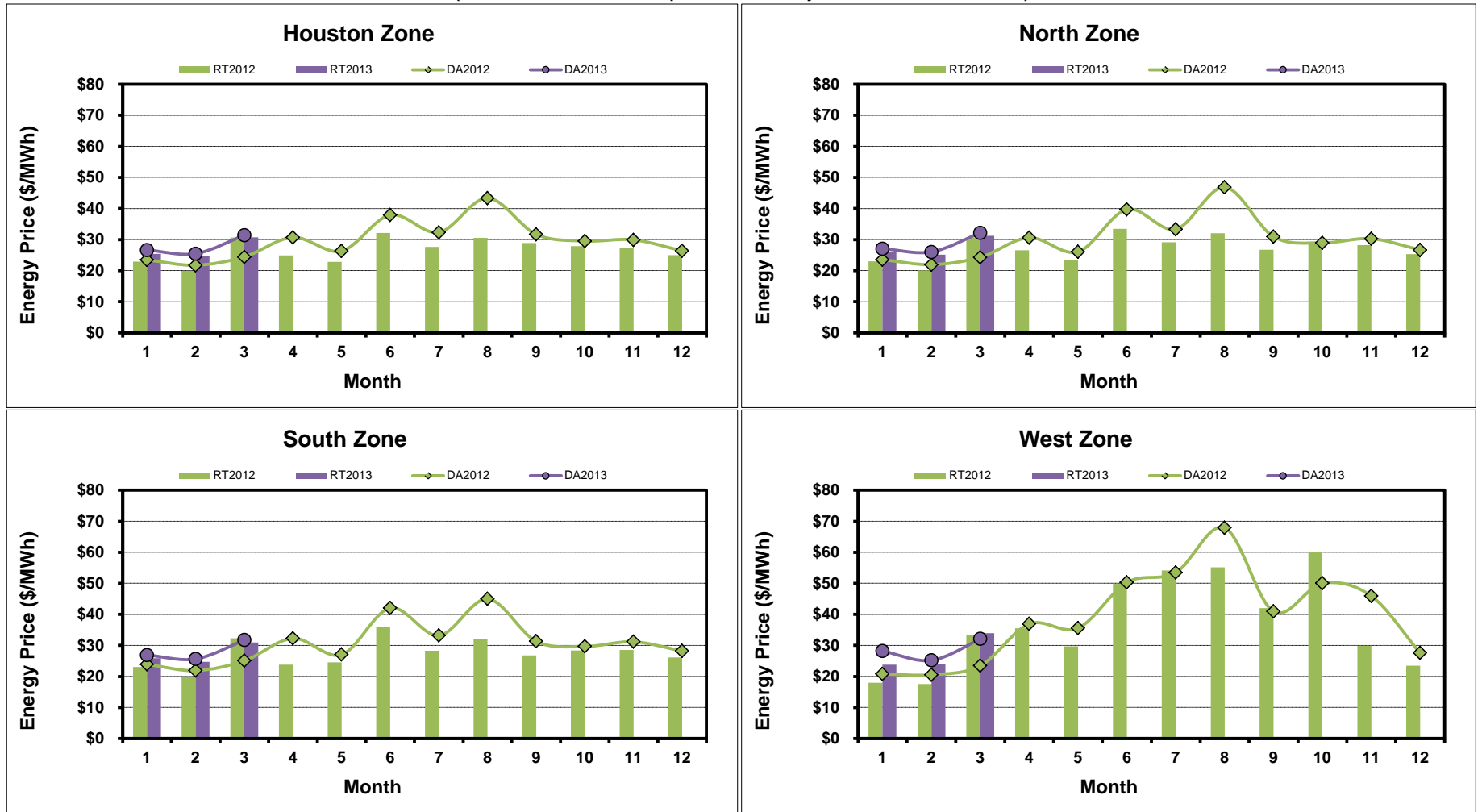
[next >>](#)

**Note:** \* Zonal load zone definition vs. Nodal comparable load zone definition: LZ\_Houston=LZ\_Houston; LZ\_West=LZ\_West; LZ\_North=(LZ\_North,LZ\_RAYBN); LZ\_South=(LZ\_South,LZ\_CPS,LZ\_AEN,LZ\_LCRA)

# Load Zone Monthly Average Energy Price DA vs RT

(avg. DA & RT SPPs weighted by Real Time Settlement Loads)

(Nodal load zone made comparable to zonal system Load Zone definitions\*)



[Home <<](#)

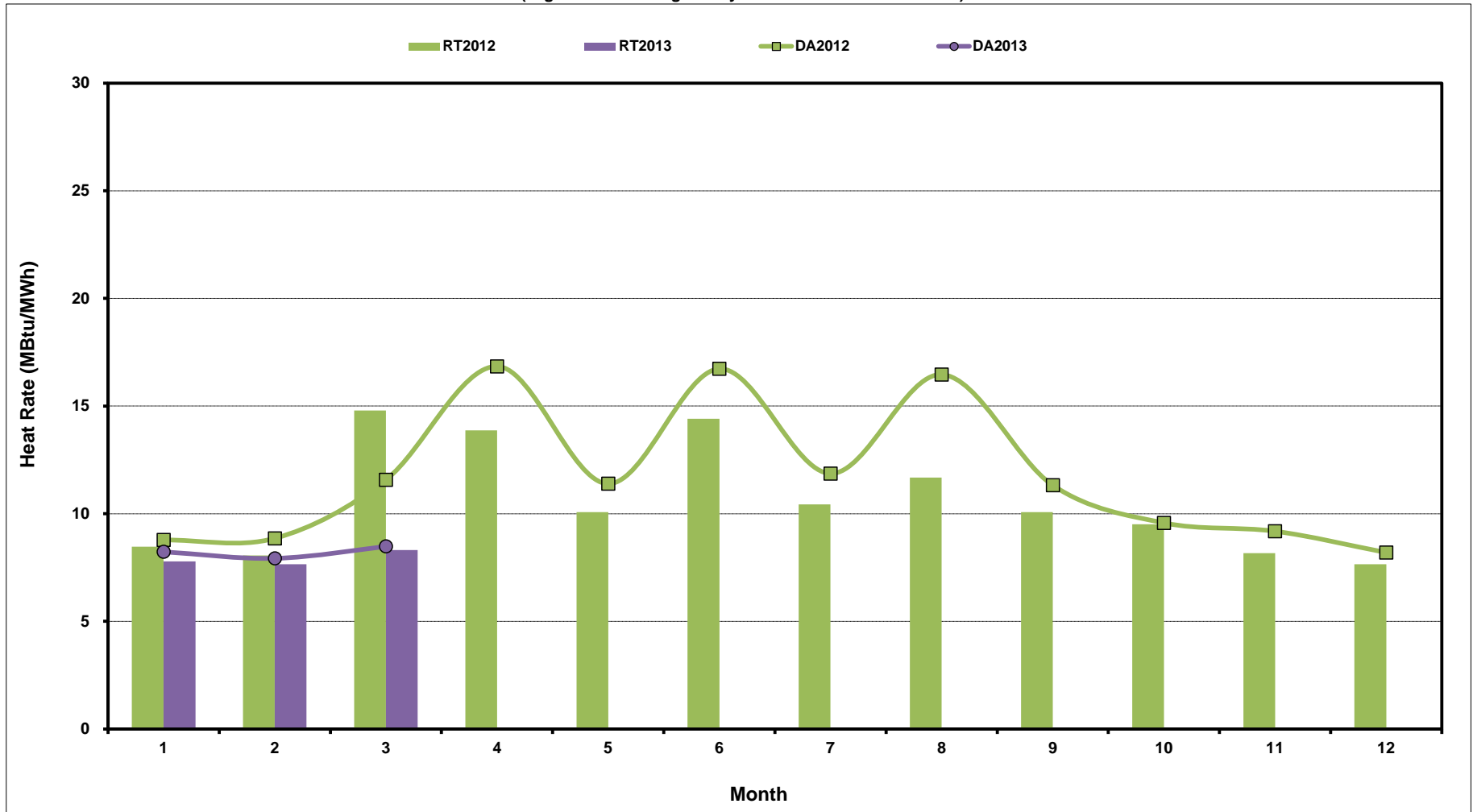
[previous <<](#)

[next >>](#)

**Note:** \* Zonal load zone definition vs. Nodal comparable load zone definition: LZ\_Houston=LZ\_Houston; LZ\_West=LZ\_West; LZ\_North=(LZ\_North,LZ\_RAYBN); LZ\_South=(LZ\_South,LZ\_CPS,LZ\_AEN,LZ\_LCRA)

# ERCOT-Wide Monthly Implied Heat Rate DA vs RT

(avg. heat rates weighted by Real Time Settlement Loads)



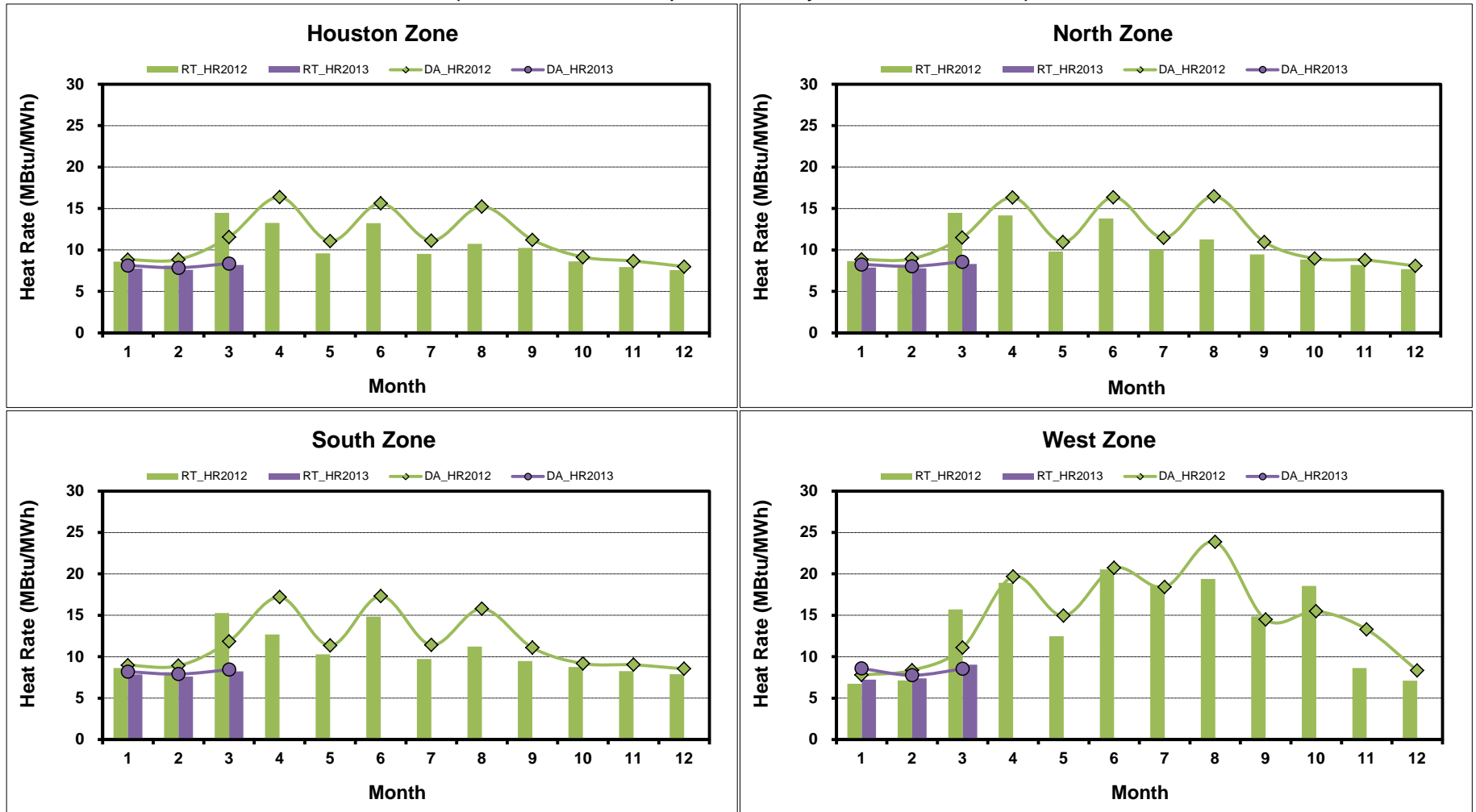
[Home <<](#)

[previous <<](#)

[next >>](#)

# Load Zone Monthly Implied Heat Rate DA vs RT

(avg. heat rates weighted by Real Time Settlement Loads)  
 (Nodal load zone made comparable to zonal system Load Zone definitions\*)



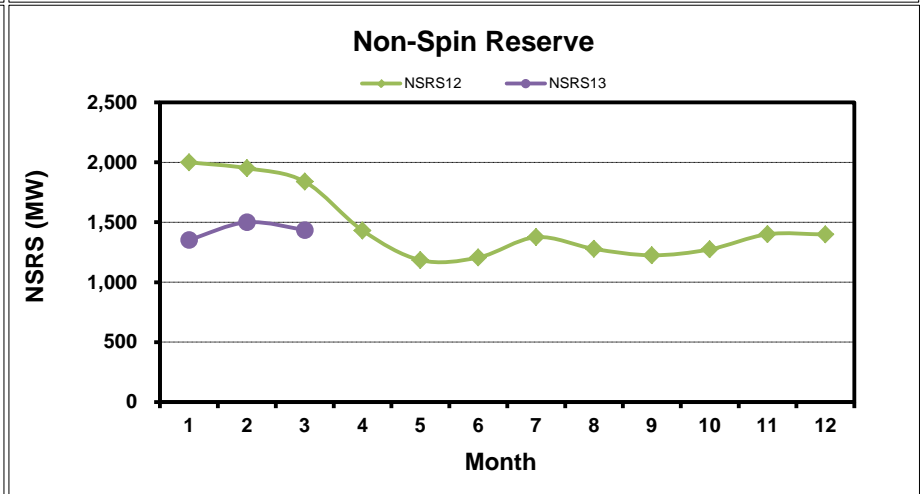
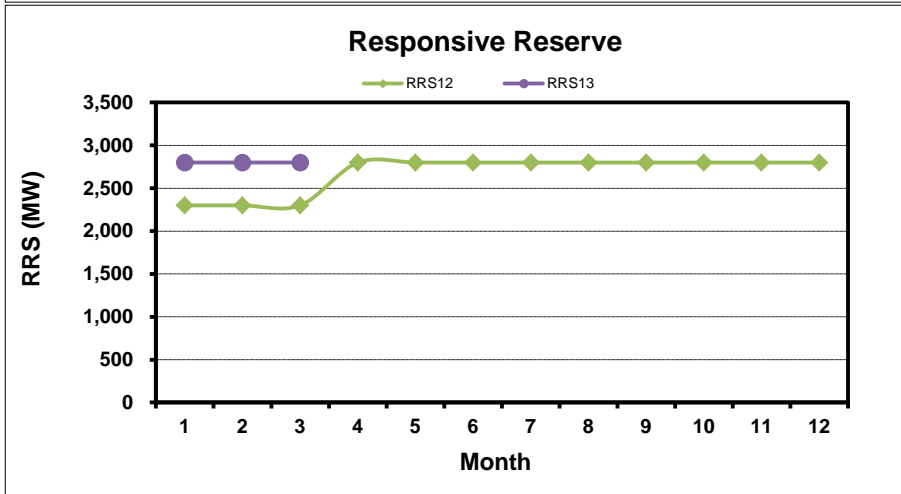
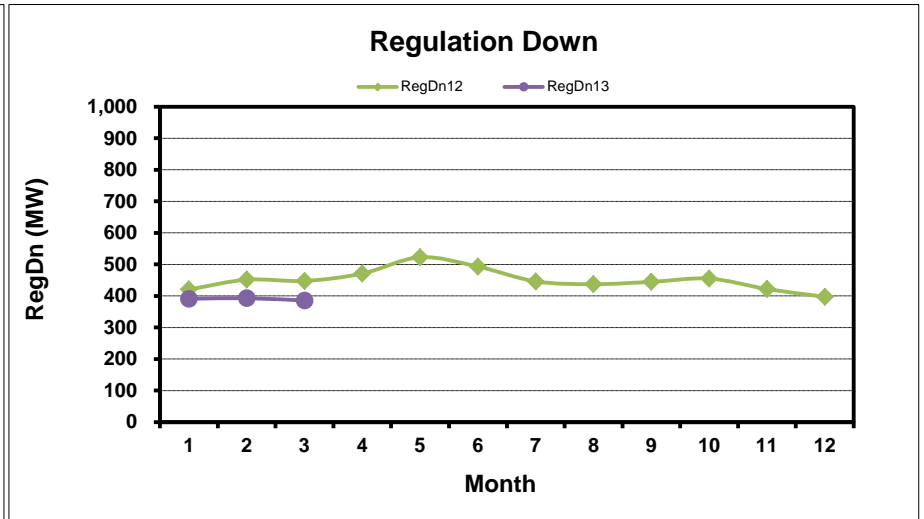
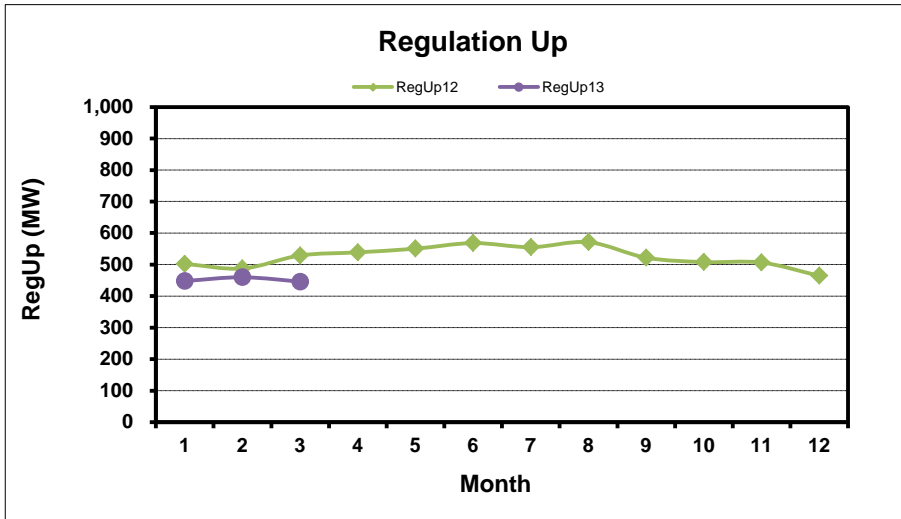
[Home <<](#)

[previous <<](#)

[next >>](#)

**Note:** \* Zonal load zone definition vs. Nodal comparable load zone definition: LZ\_Houston=LZ\_Houston; LZ\_West=LZ\_West; LZ\_North=(LZ\_North,LZ\_RAYBN); LZ\_South=(LZ\_South,LZ\_CPS,LZ\_AEN,LZ\_LCRA)

# Monthly Average of Ancillary Services Required MW

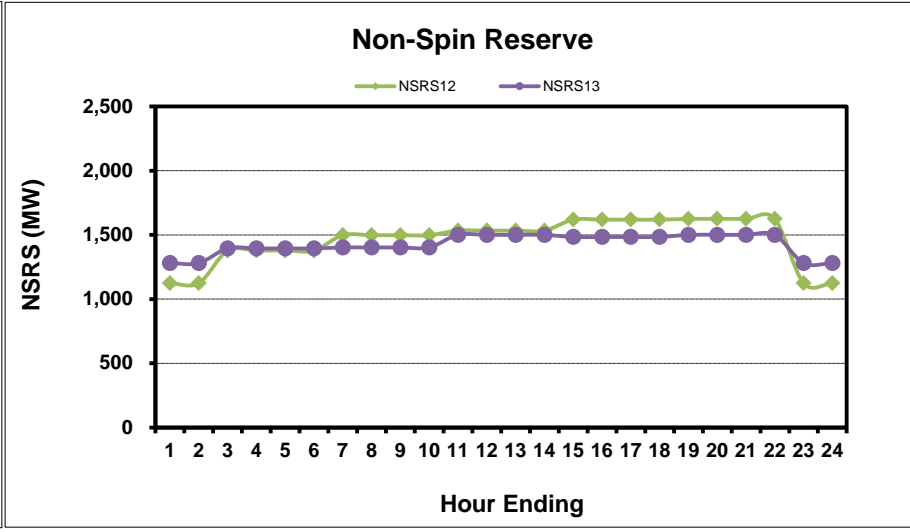
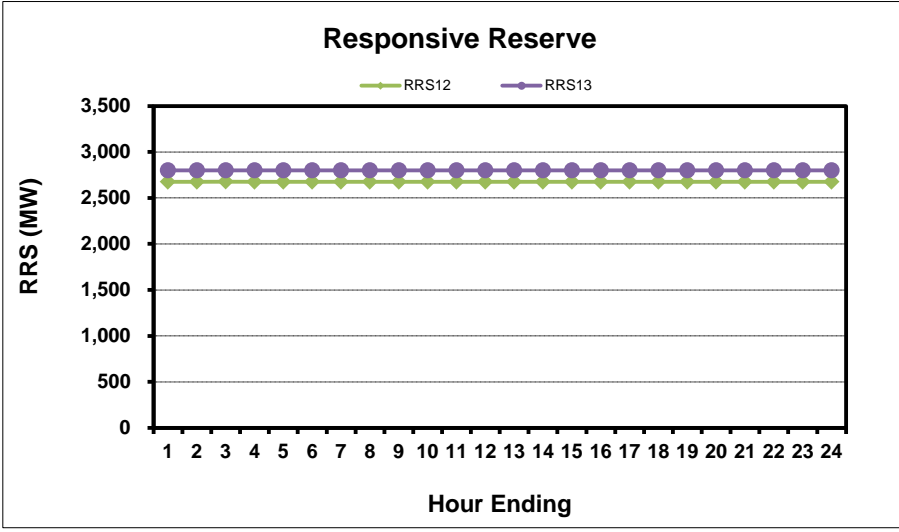
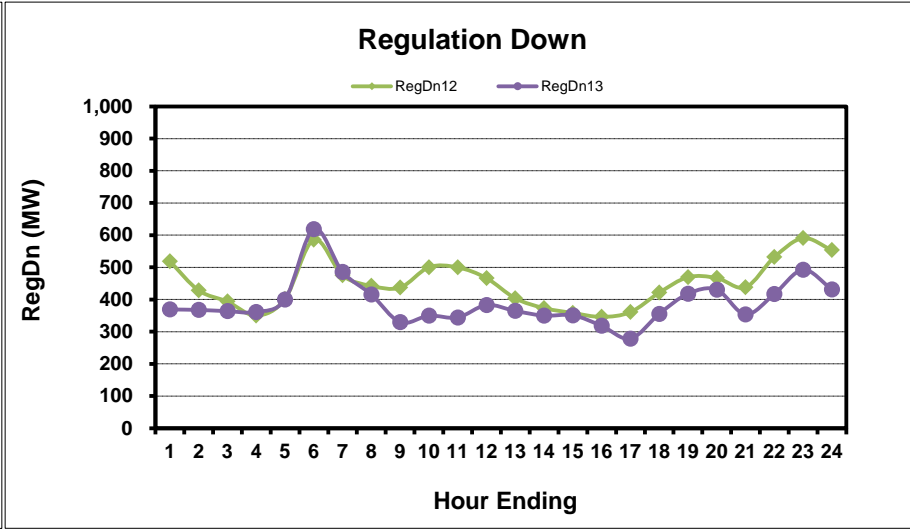
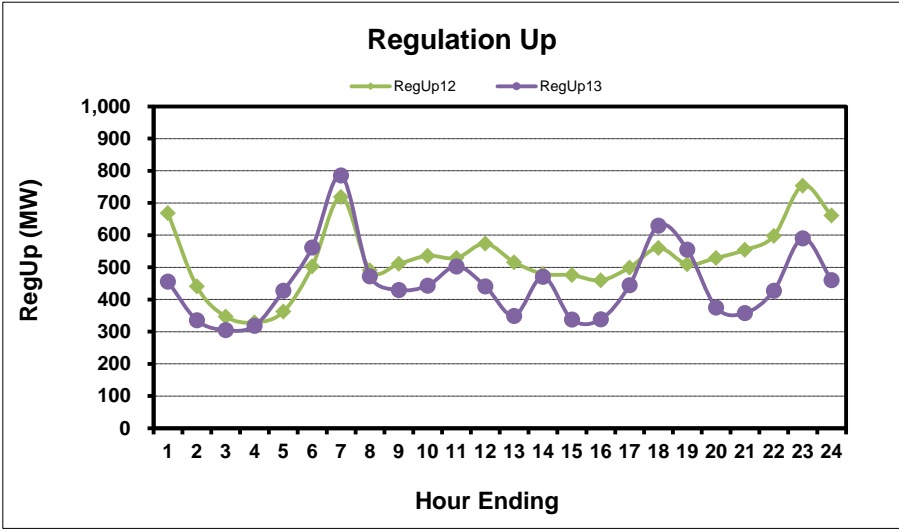


[Home <<](#)

[previous <<](#)

[next >>](#)

# Hourly Average of Ancillary Services Required MW



[Home <<](#)

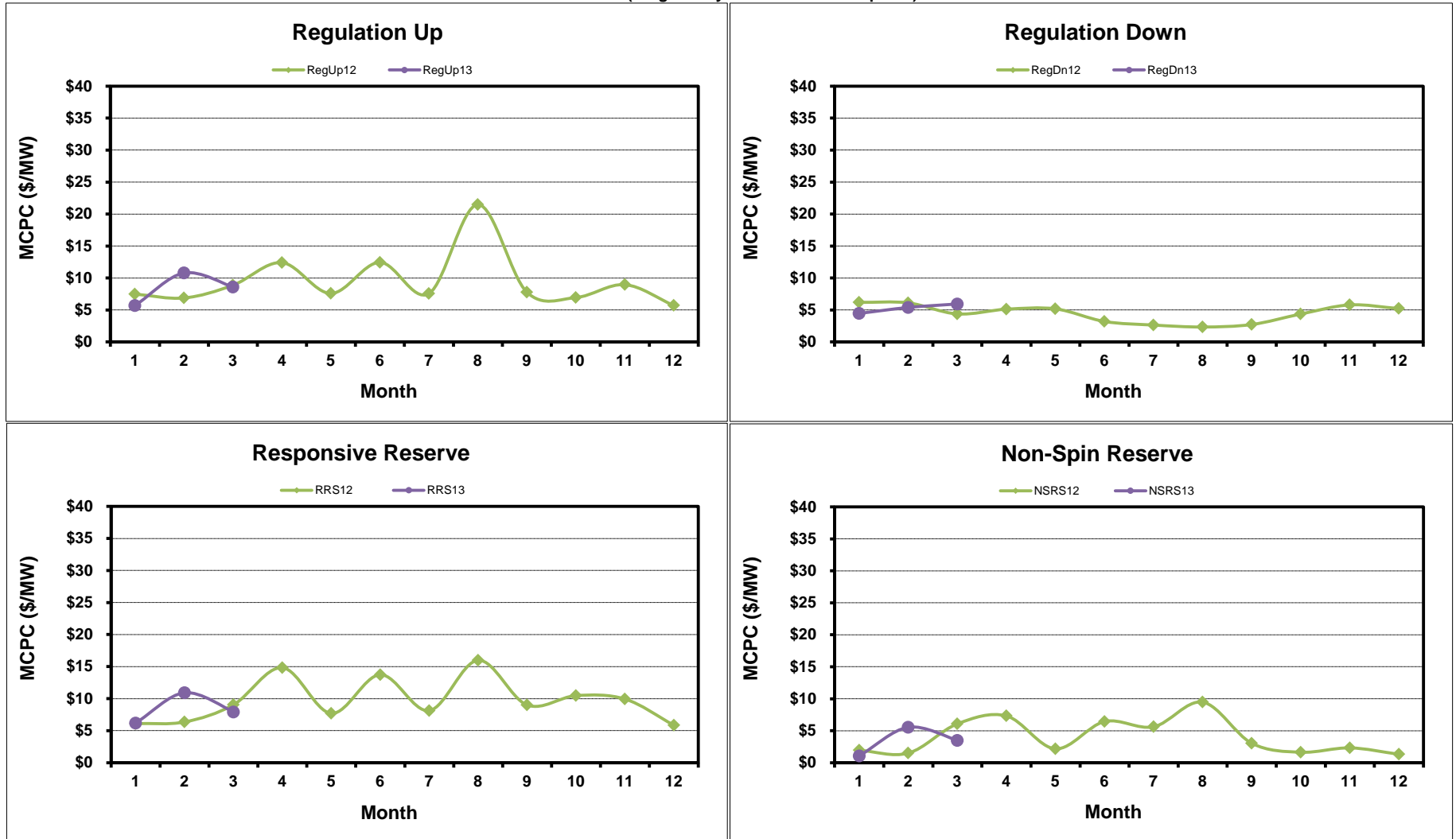
[previous <<](#)

[next >>](#)



# Monthly Average Ancillary Services Price

(weighted by A/S Quantities Required)

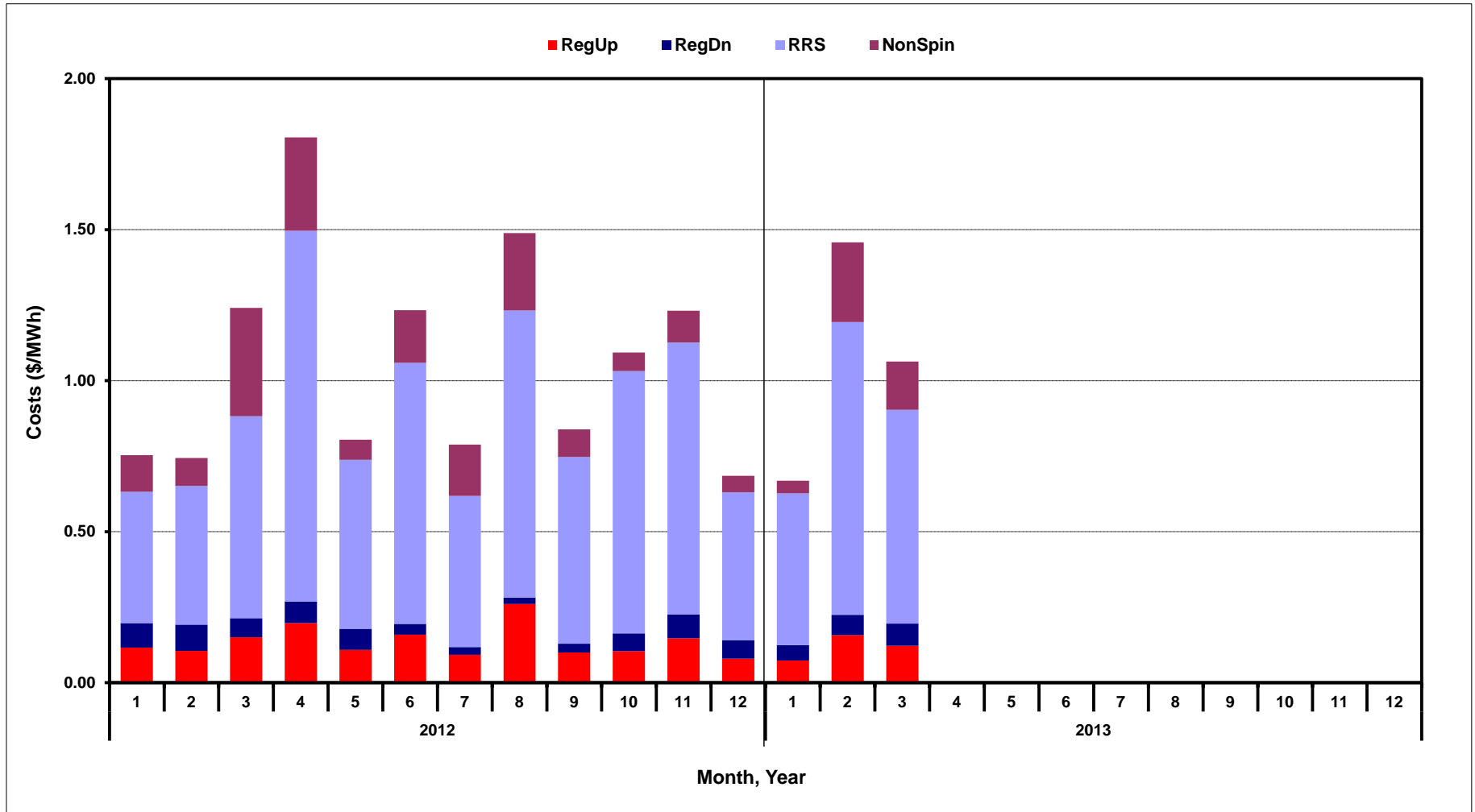


[Home <<](#)

[previous <<](#)

[next >>](#)

# Monthly Average A/S Cost per MWh Load

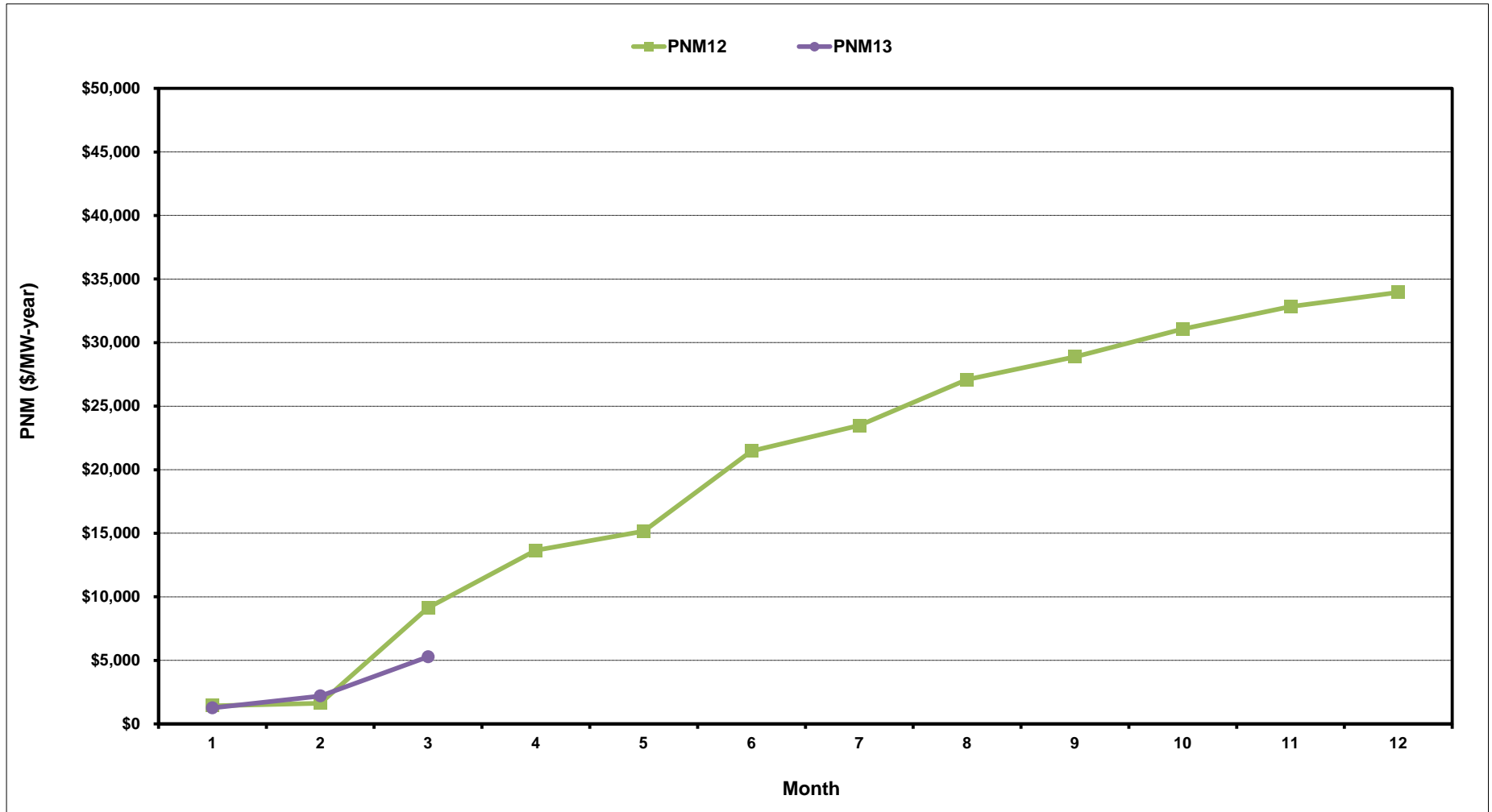


[Home <<](#)

[previous <<](#)

[next >>](#)

# ERCOT-Wide Cumulative Peaker Net Margin

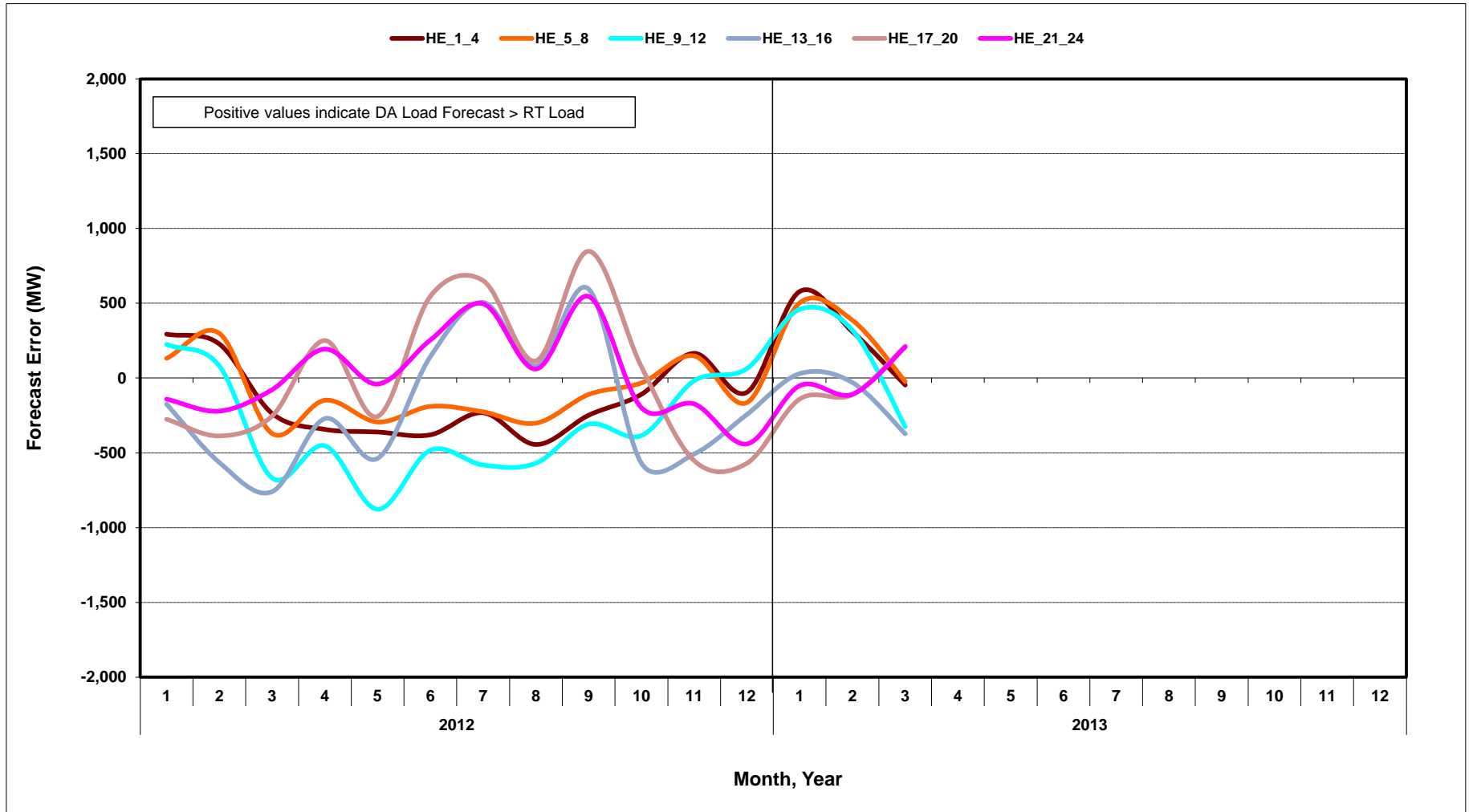


[Home <<](#)

[previous <<](#)

[next >>](#)

# DA vs. RT Load Forecast Error by Hour Ending

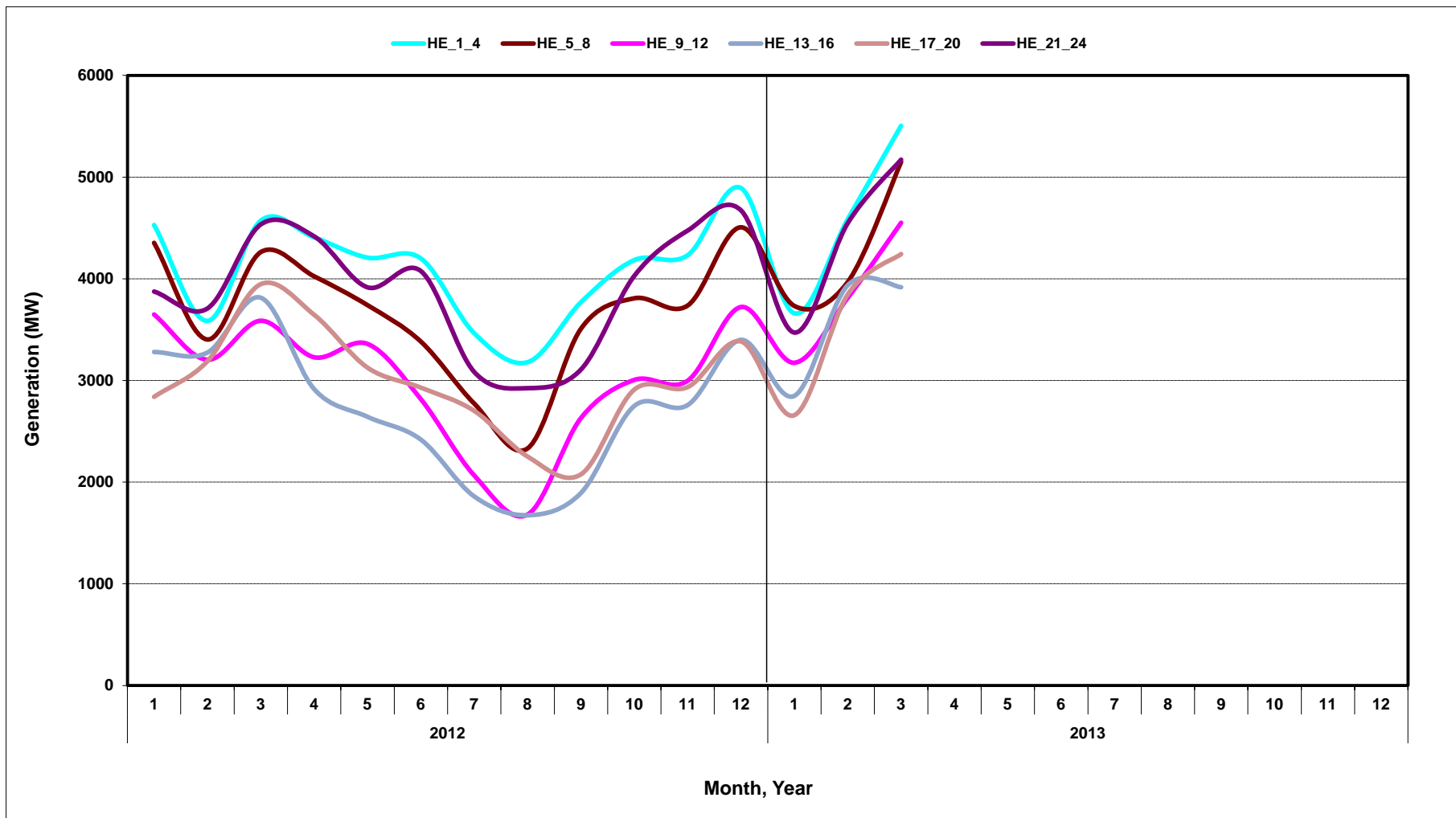


[Home <<](#)

[previous <<](#)

[next >>](#)

## Monthly Average of Wind Generation by Hour Ending

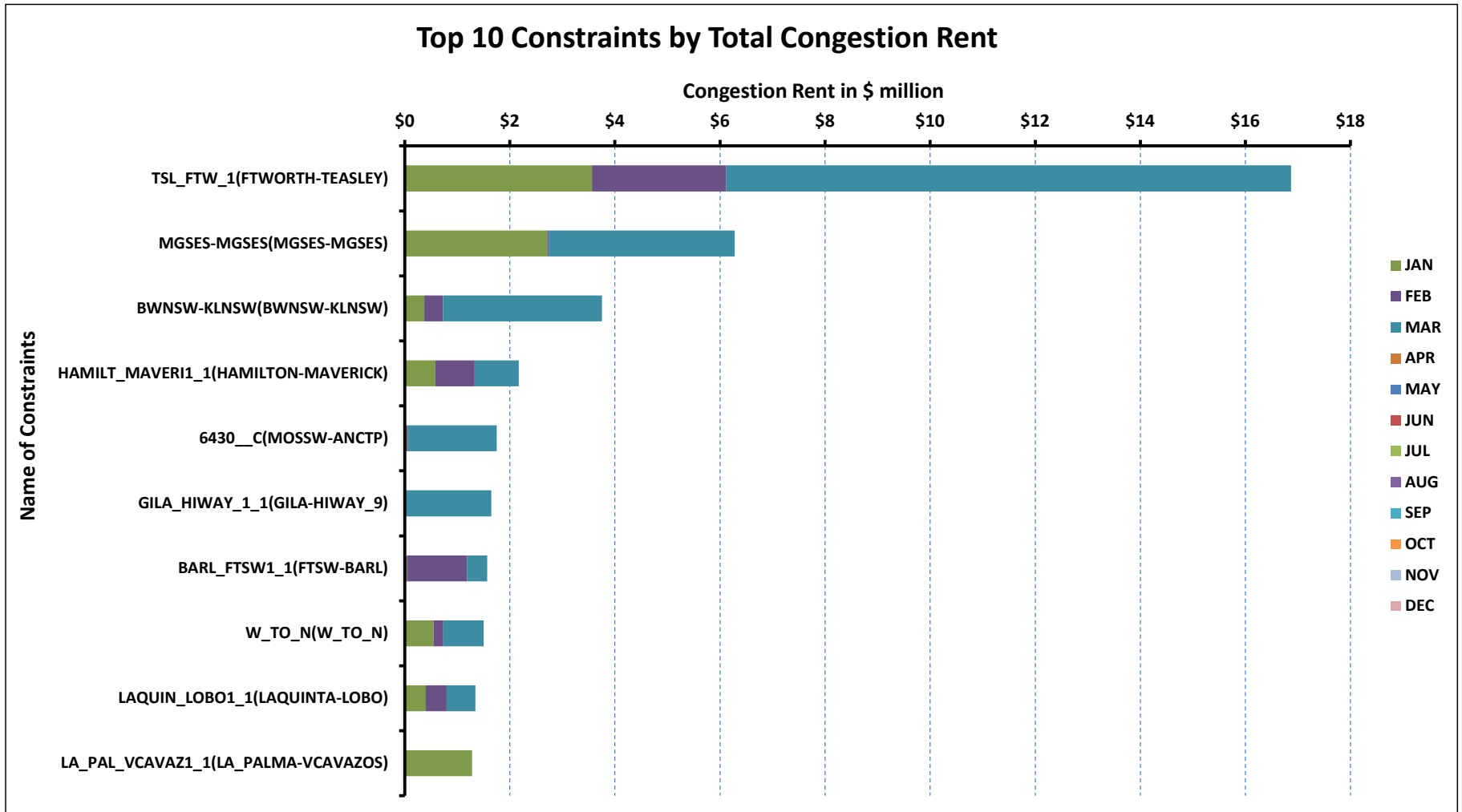


[Home <<](#)

[previous <<](#)

[next >>](#)

# RT Congestion Constraint Rankings - 1

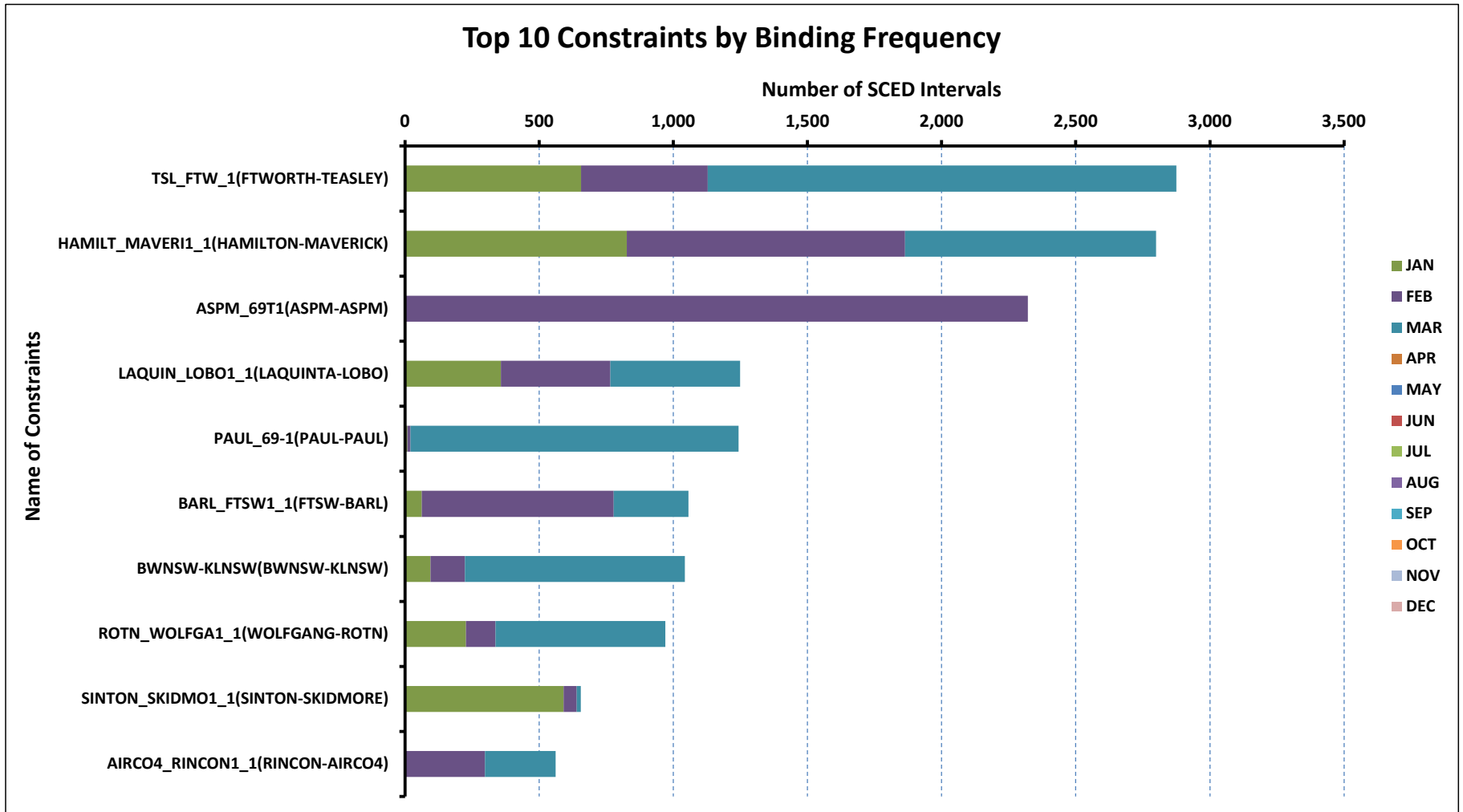


[Home <<](#)

[previous <<](#)

[next >>](#)

# RT Congestion Constraint Rankings - 2

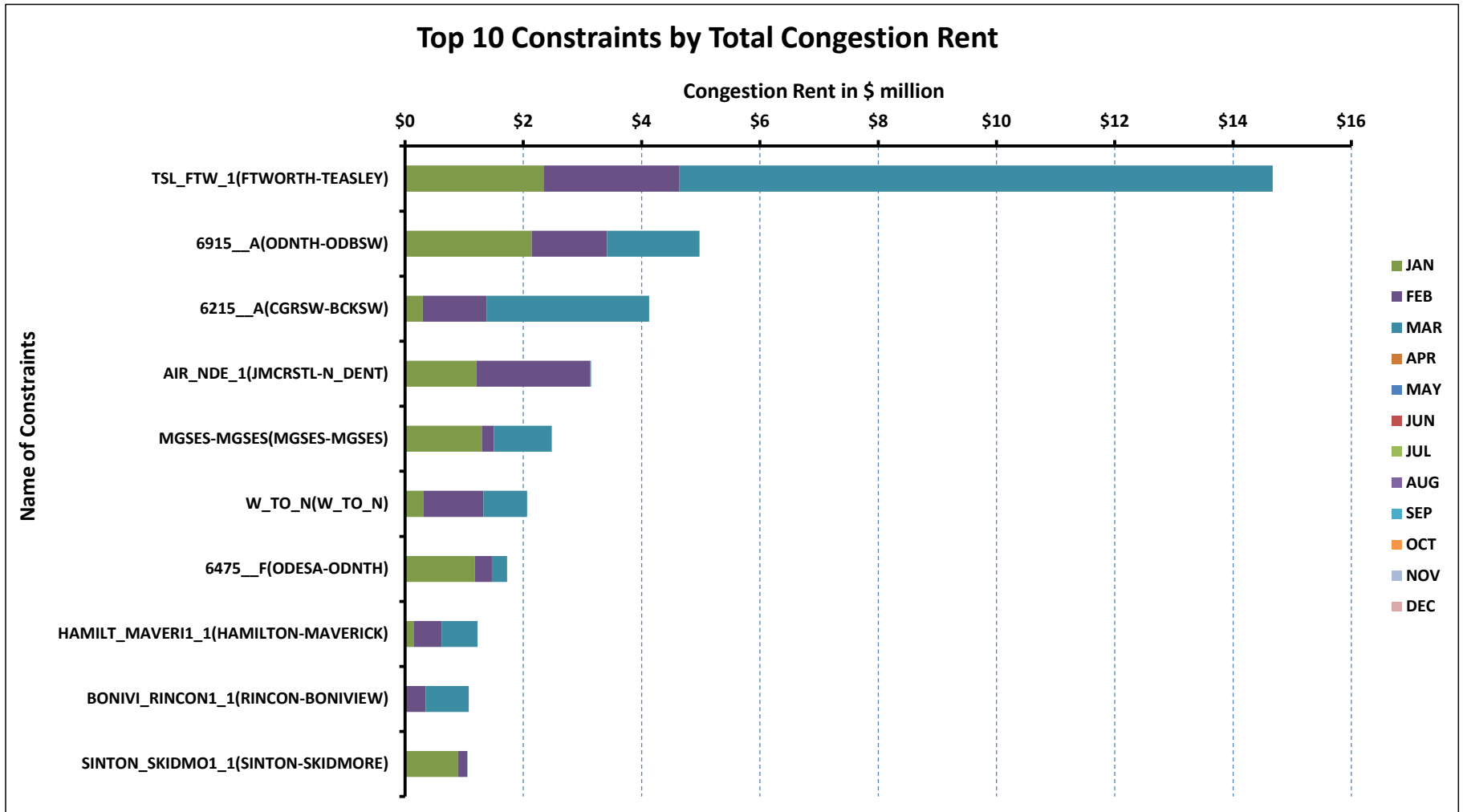


[Home <<](#)

[previous <<](#)

[next >>](#)

# DA Congestion Constraint Rankings - 1



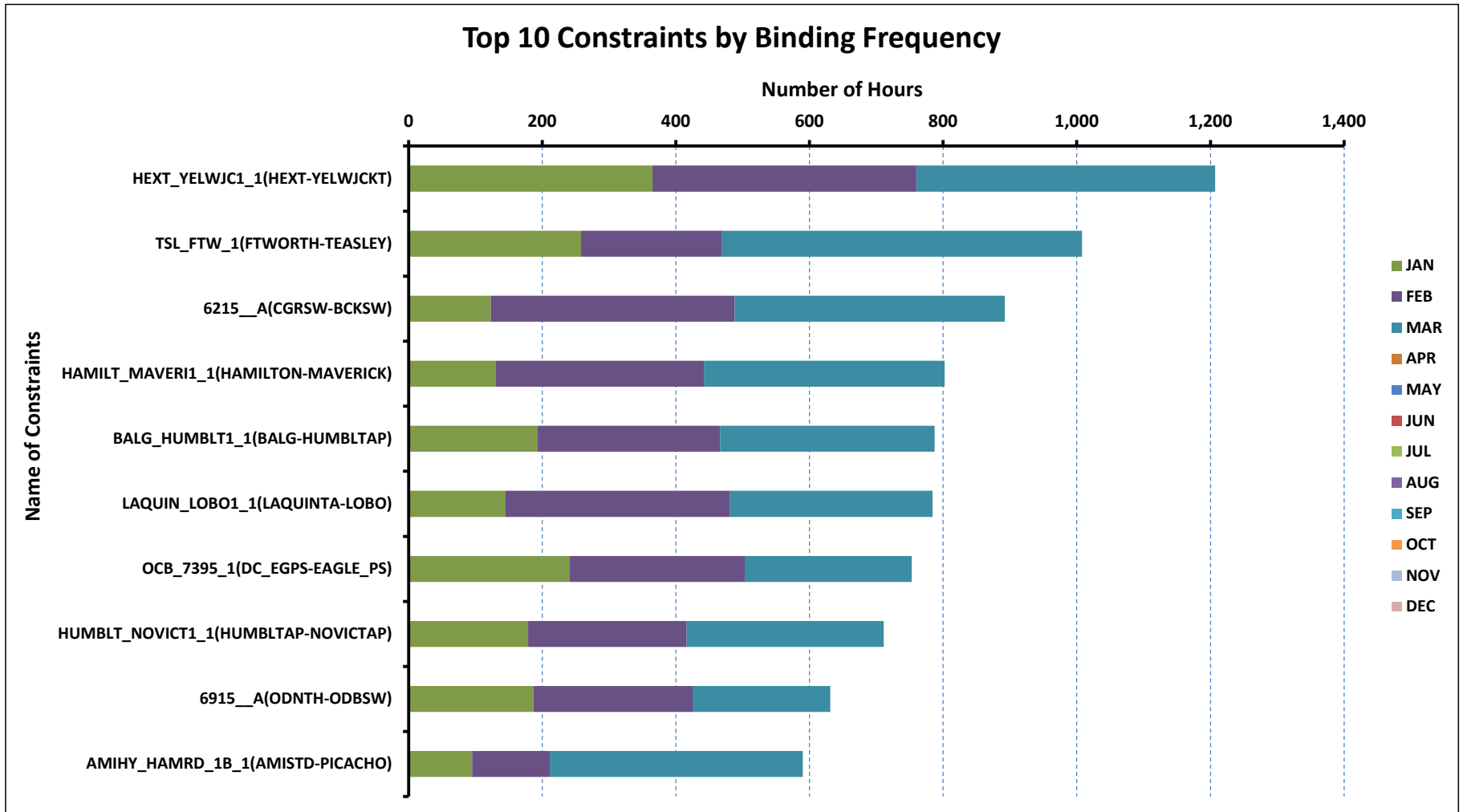
[Home <<](#)

[previous <<](#)

[next >>](#)



# DA Congestion Constraint Rankings - 2

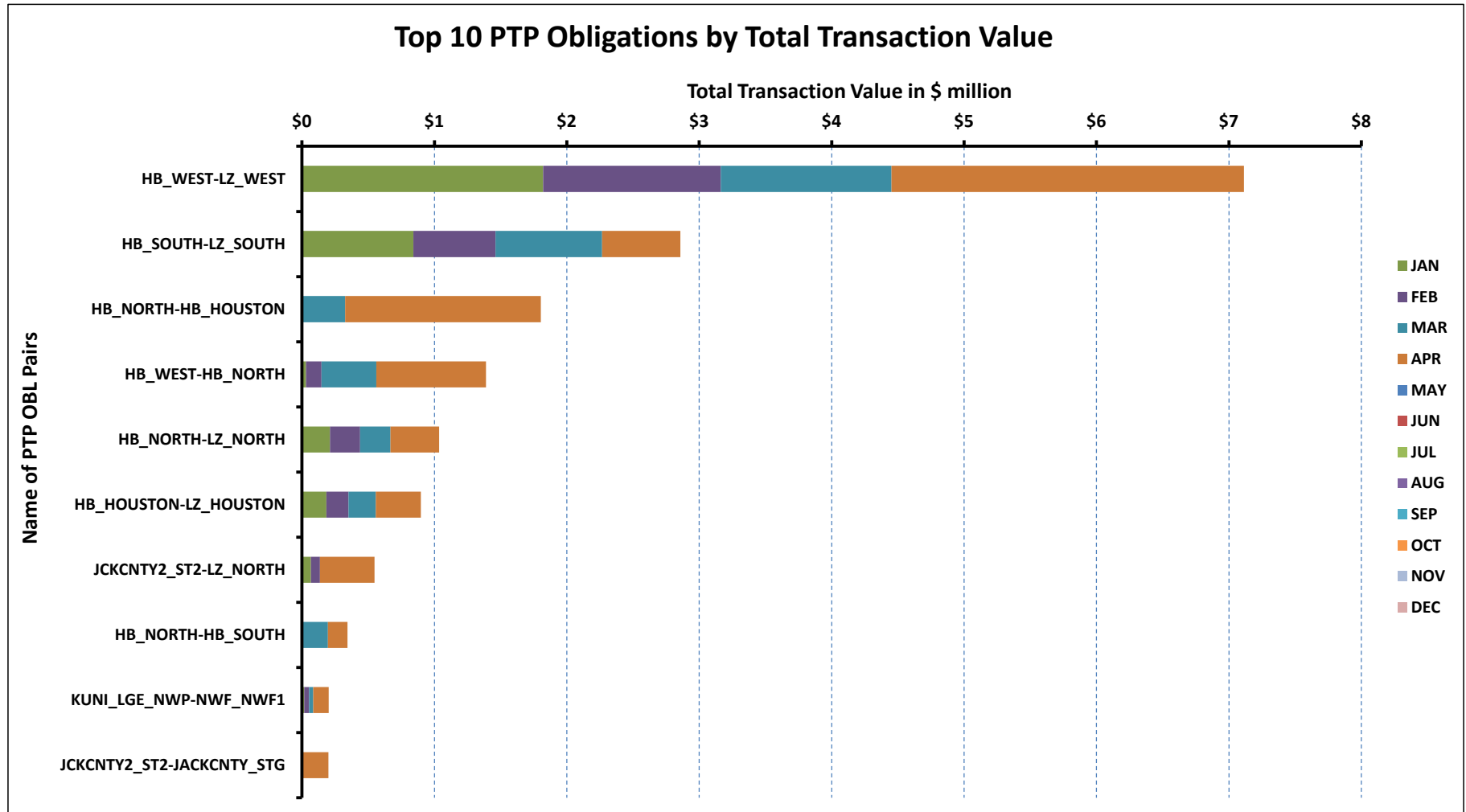


[Home <<](#)

[previous <<](#)

[next >>](#)

# Top 10 CRR Pairs Ranked by Monthly Auction Values - 1

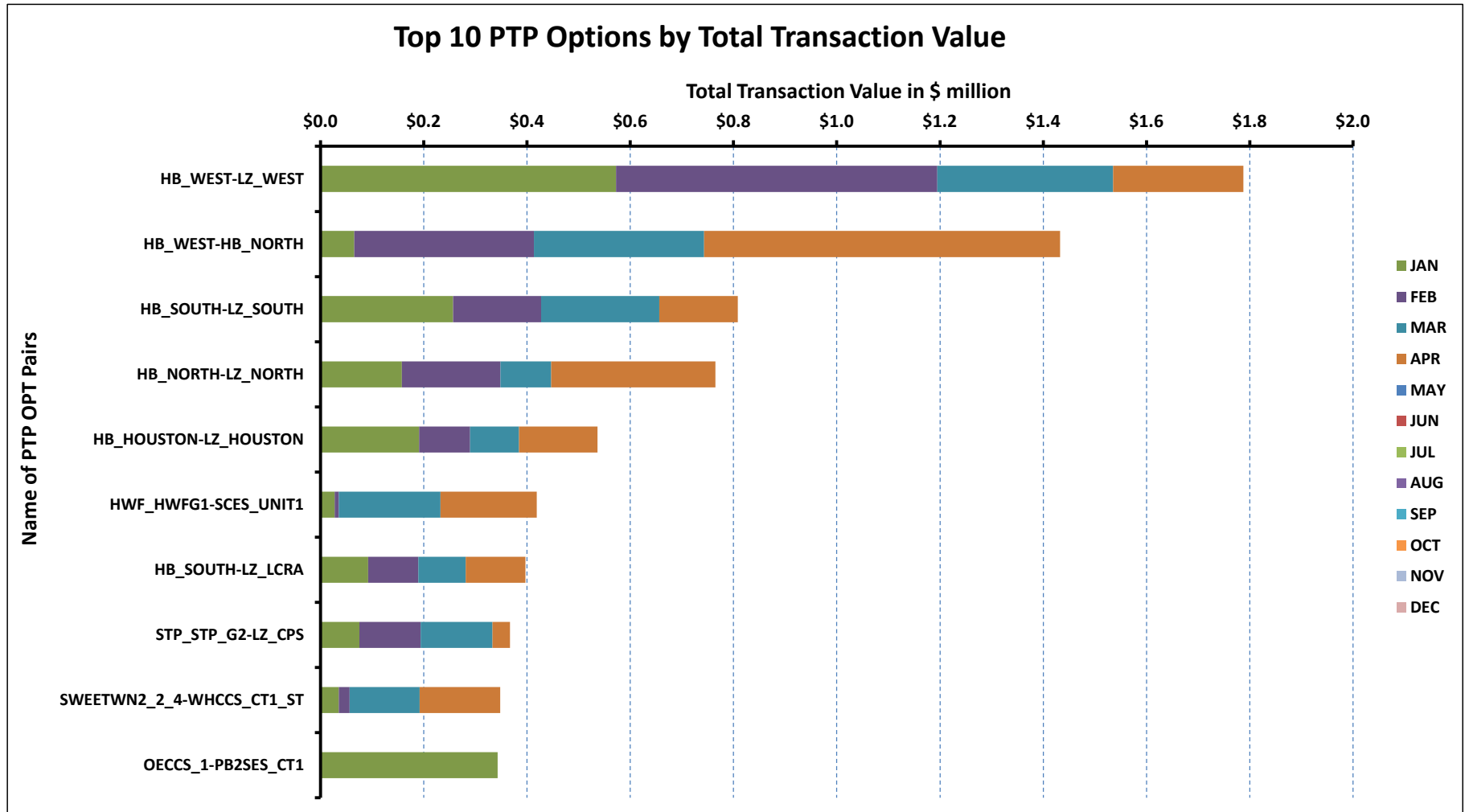


[Home <<](#)

[previous <<](#)

[next >>](#)

## Top 10 CRR Pairs Ranked by Monthly Auction Values - 2



[Home <<](#)

[previous <<](#)