



ERCOT Monthly Operational Overview (March 2013)

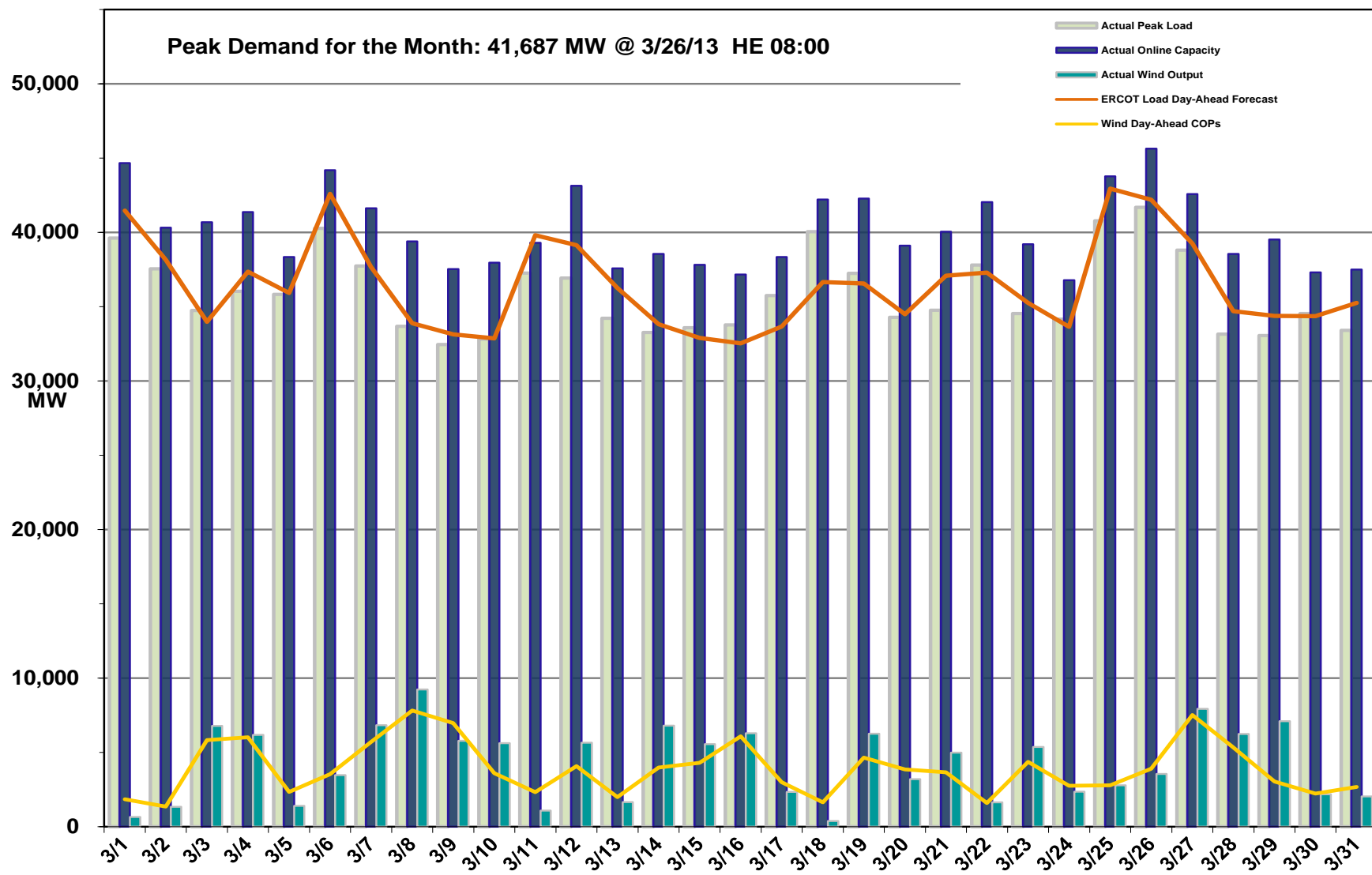
April 15, 2013



Grid Operations & Planning

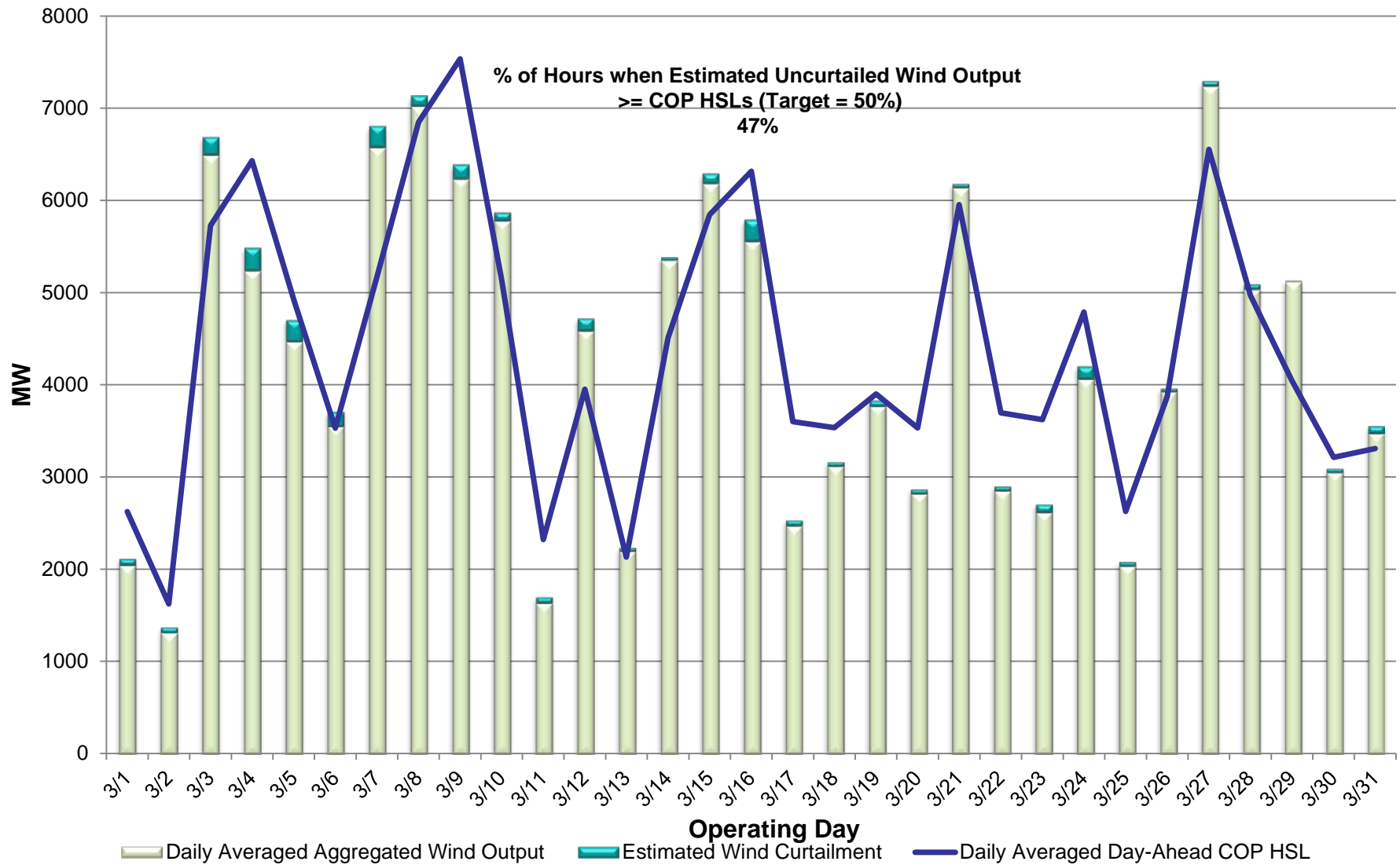
- March 2013 Operations
 - Peak Demand: Actual vs. Forecast
 - On-line Resources: Total at Peak and Wind
 - CPS1 Monthly Performance
 - Historical Peak and Minimum Loads
 - Day-Ahead Load Forecast Performance
 - Reliability Unit Commitment Capacity (RUC) by weather zone
 - Generic Transmission Limits (GTLs)
 - Advisories, Watches and EEAs
 - Significant System Incidents
- March 2013 Planning Activities
 - Summary
 - Generation Interconnection Requests
 - Wind Capacity

March 2013 Daily Peak Demand: Hourly Average Actual vs. Forecast, Wind Day-Ahead COPs & On-line Capacity at Peak



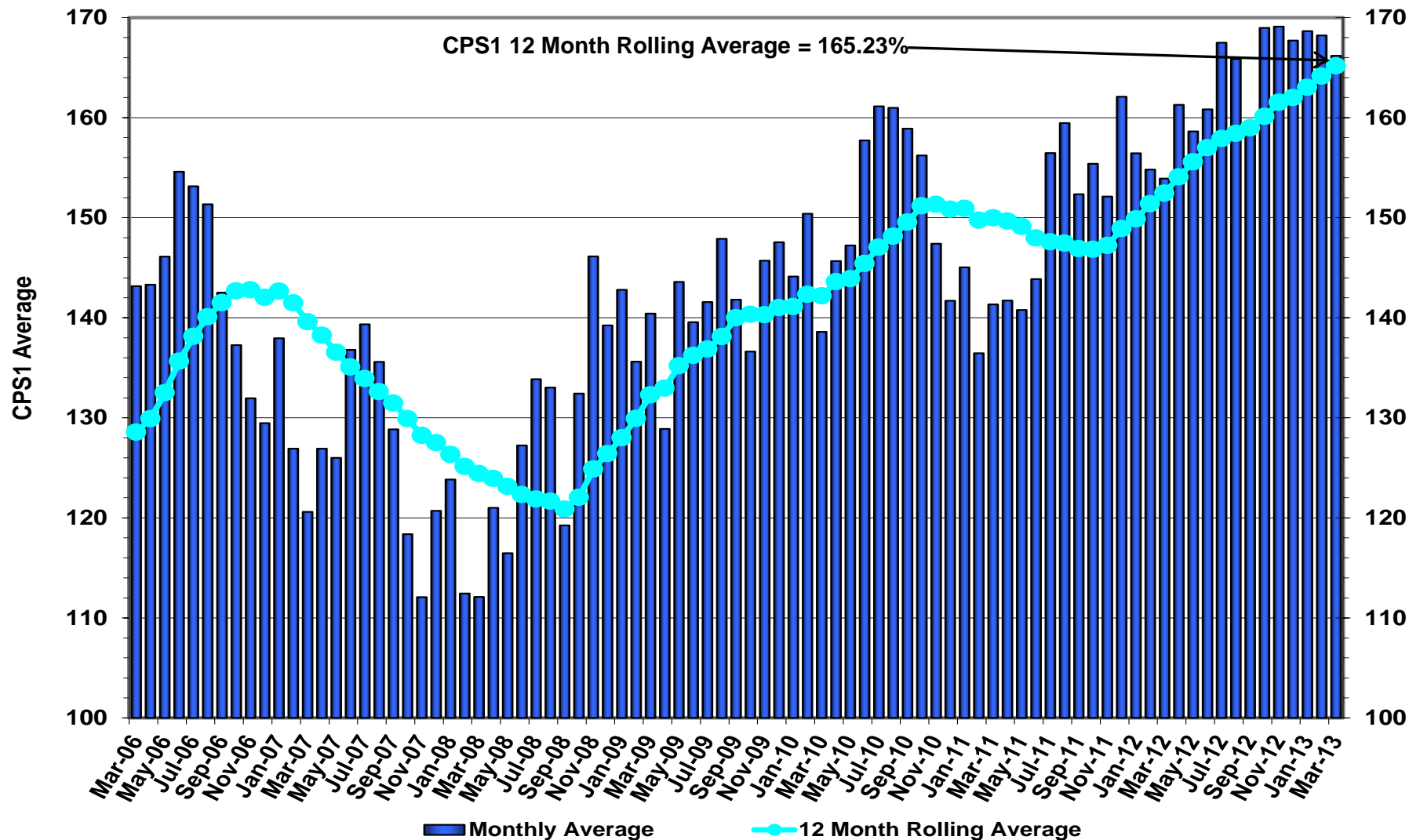
Note: All data are hourly averages during the peak load hour obtained from COPs, and EMMS.

March 2013 Actual Wind Output plus Curtailments vs. Wind Day-Ahead COPs for All Hours

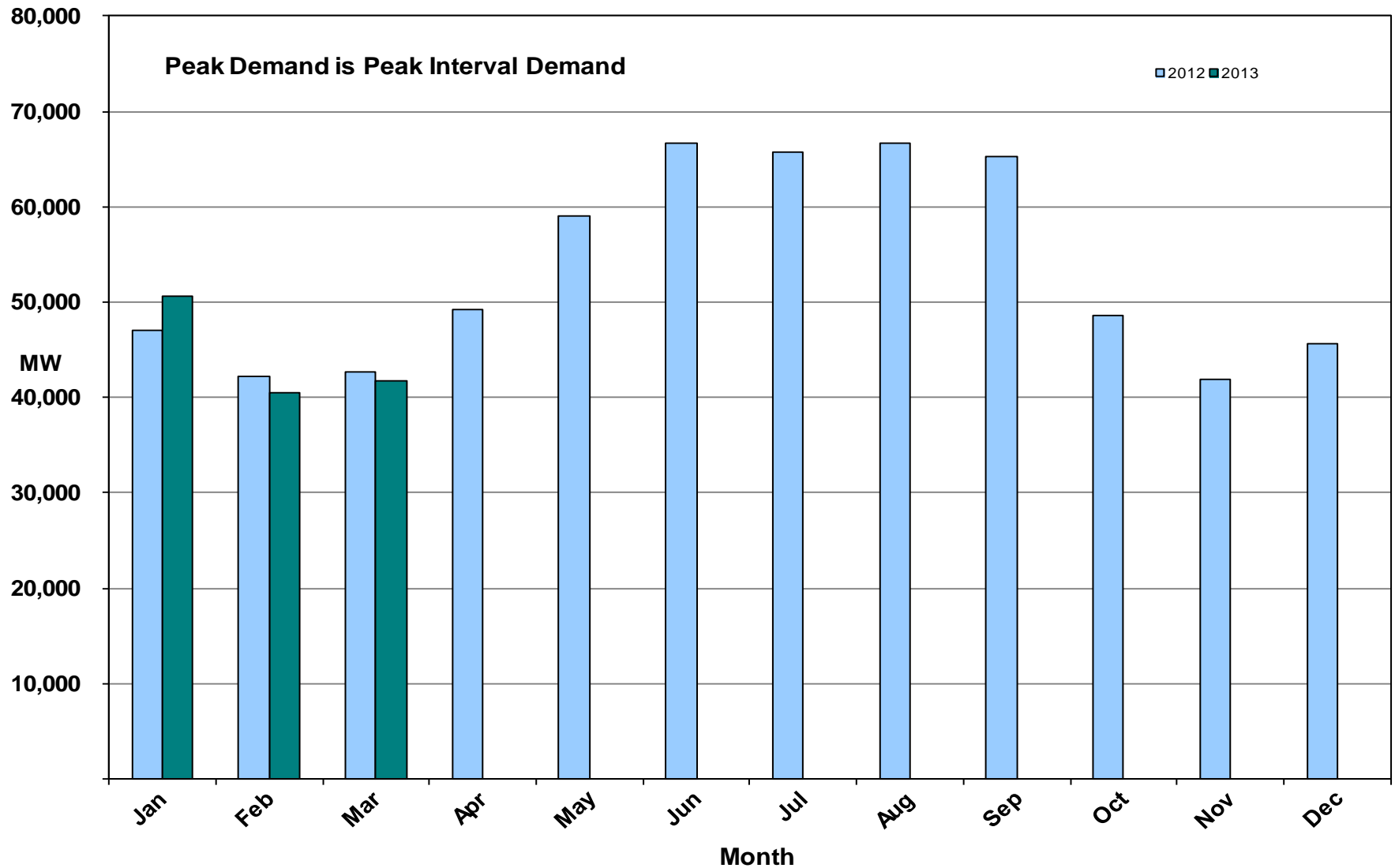


Note: QSEs must use the AWST 50% probability of exceedance forecast as the HSL in their COPs

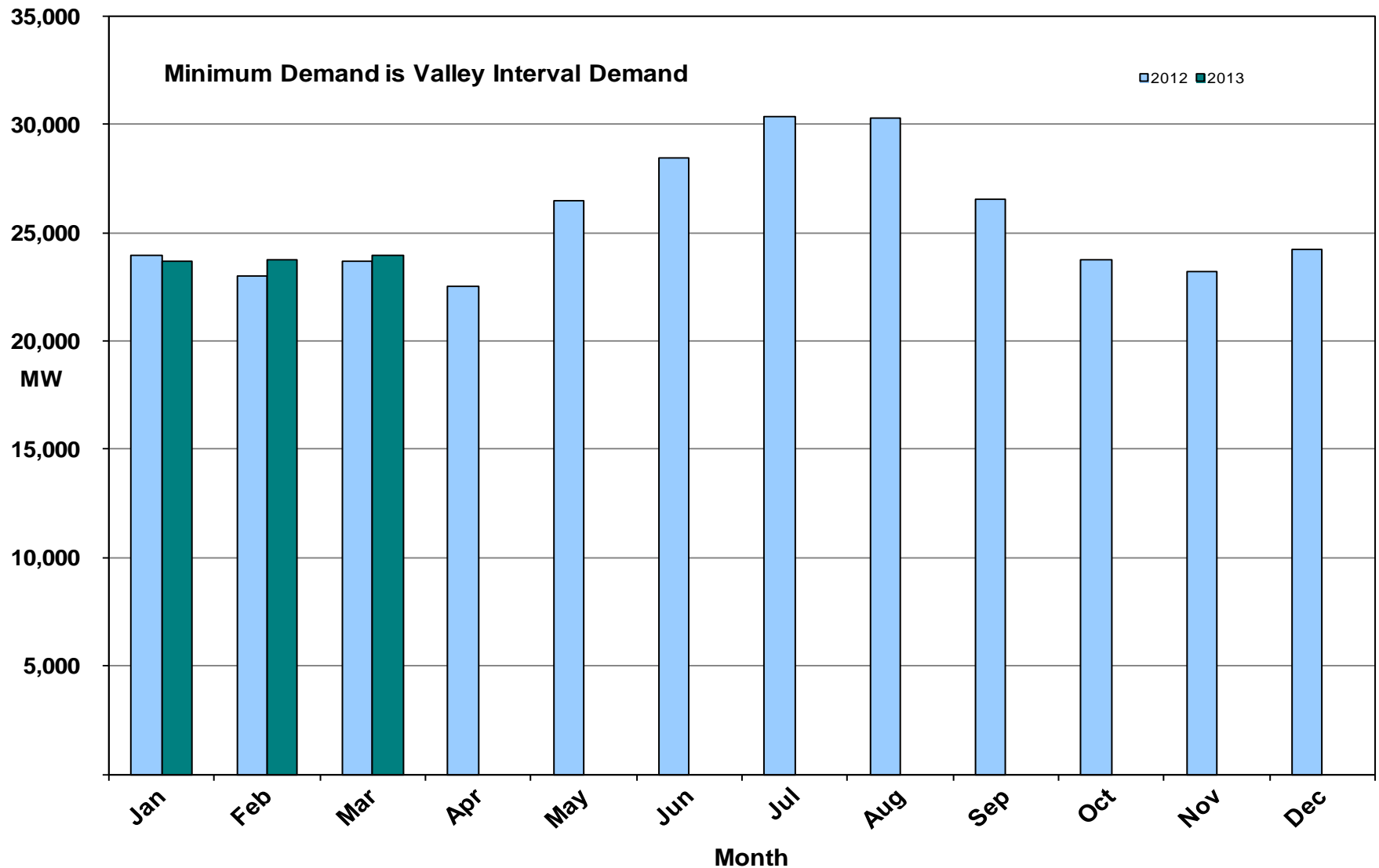
March 2013 ERCOT's CPS1 Monthly Performance



March 2013 Monthly Peak Actual Demand



March 2013 Monthly Minimum Actual Demand

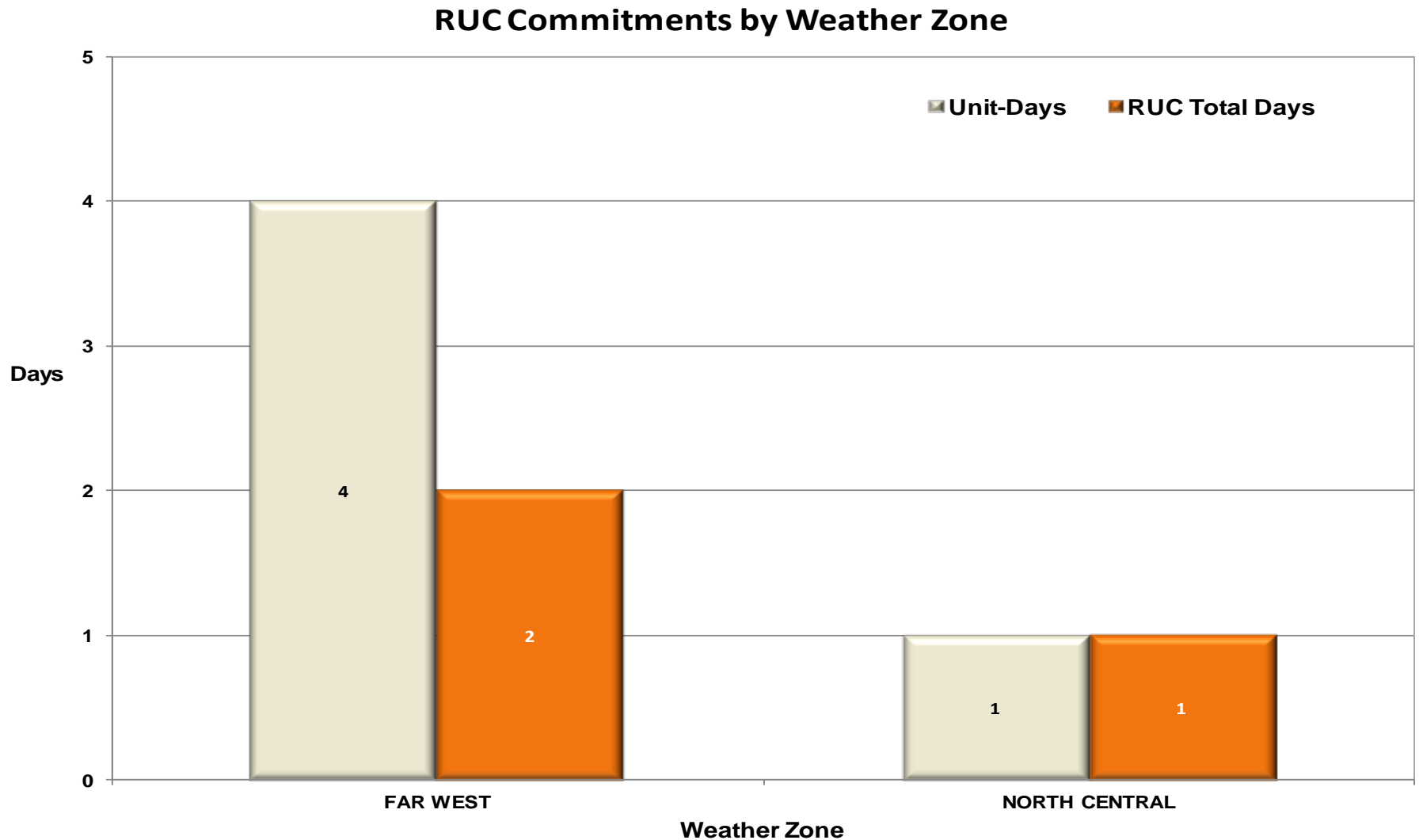


Day-Ahead Load Forecast Performance in March 2013

**Mean Absolute Percent Error (MAPE) for ERCOT Mid-Term Load Forecast (MTLF)
Run at 14:00 Day Ahead**

	2010 MAPE	2011 MAPE	2012 MAPE	2013 MAPE	Mar 2013 MAPE	
Average Annual MAPE	2.83	2.83	3.02	3.00	2.68	
Lowest Monthly MAPE	2.24	1.63	2.51	2.68	Lowest Daily MAPE	1.13 Mar – 05
Highest Monthly MAPE	3.79	3.55	3.49	3.50	Highest Daily MAPE	6.03 Mar – 18

Reliability Unit Commitment (RUC) Capacity by Weather Zone in March 2013



March 2013 Generic Transmission Limits (GTLs)

GTLs	Mar 12 Days GTLs	Jan 13 Days GTLs	Feb 13 Days GTLs	Mar 13 Days GTLs	Last 12 Months Total Days (Mar12 – Mar13)
North – Houston	0	0	0	0	0
West – North	17	6	5	9 Mar(5,15,19-20,23-24,26-28)	134
Valley Import	0	0	0	0	0

GTL: A transmission flow limit more constraining than a Transmission Element's normal limit established to constrain flow between geographic areas of the ERCOT Transmission System that is used to enforce stability and voltage constraints that cannot be modeled directly in ERCOT's transmission security analysis applications.

Note: This table lists how many times a constraint has been activated to avoid exceeding a GTL limit, it does not imply an exceedance of the GTL occurred.

Advisories and Watches in March 2013

- **Advisories issued for Physical Responsive Capability (PRC) below 3000 MW.**
 - Issued for two days (03/11,03/16)
- **Watches issued for Physical Responsive Capability (PRC) below 2500 MW.**
 - None
- **Transmission Watches**
 - None.
- **Emergency Notice**
 - None.
- **Energy Emergency Alerts**
 - None

Significant Events in March 2013

- **March 10th**
 - At 10:00 ERCOT experienced the simultaneous loss of four 138 kV and four 69 kV lines due to weather in West Columbia area. This resulted in losing approximately 198 MW of generation.

Lake Levels Update – April 1, 2013

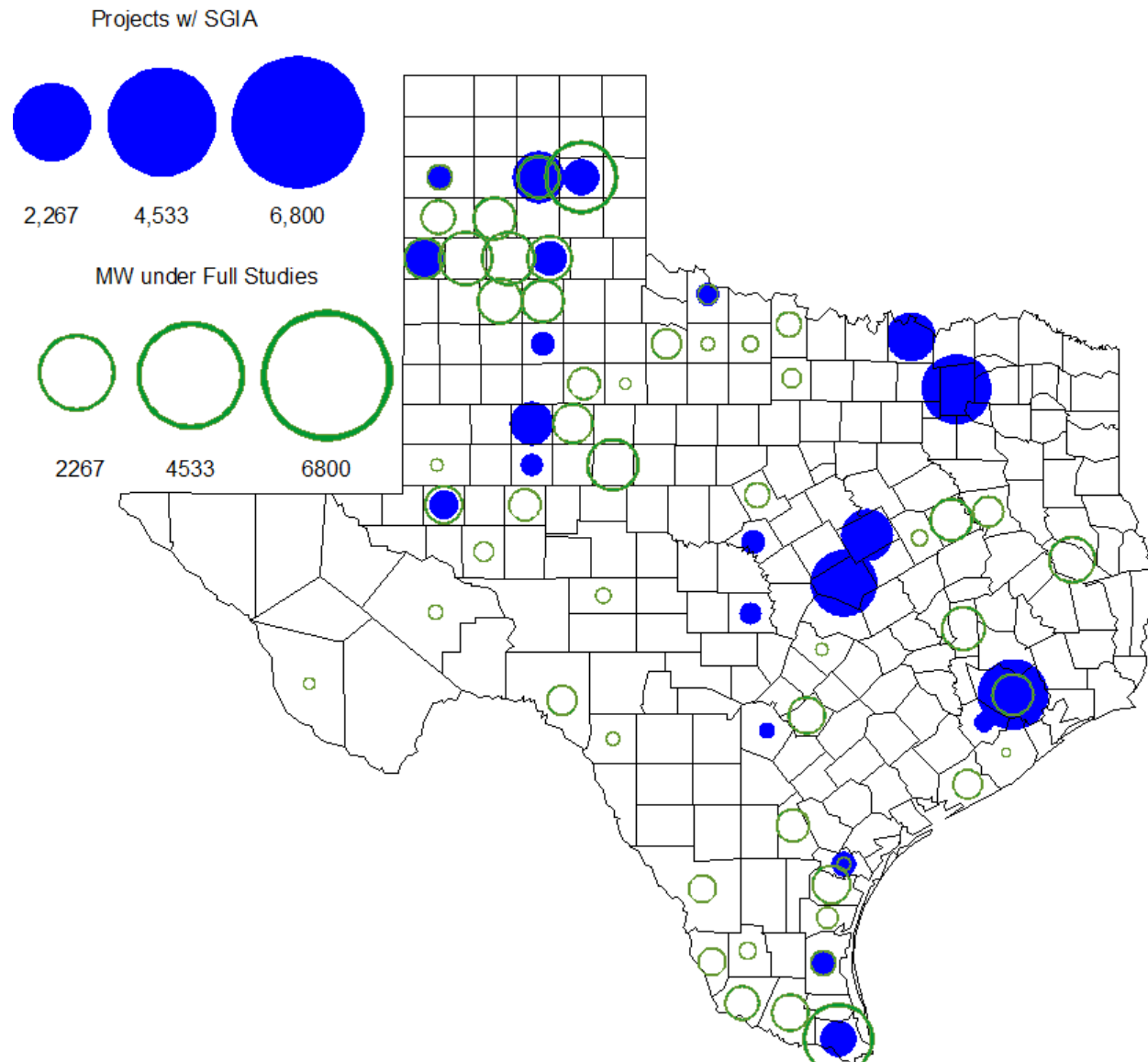
Surface Water & (MW)	*Level @ Full Conservation Pool	*Level on Jan 1, 2011	*Level on Oct 7, 2011	*Level on Apr 1, 2013
Lake Texana (56)	44.50	41.00	32.81	40.77
Bardwell Lake (312)	421.00	420.71	416.23	418.18
Lake Colorado City (407)	2,070.20	2057.33	2052.4	2052.36
Lake Ray Hubbard (916)	435.50	432.37	429.22	431.92
Lake Granbury (983)	693.00	691.90	686.27	686.97
Lake Houston (1016)	41.73	42.10	36.76	41.64
Twin Oaks Reservoir (1616)	400	398.87	398.27	400.12
Lake Limestone (1689)	363	359.03	354	360.31
Martin Lake (2425)	306	300.48	295.06	304.40

* In Feet above Mean Sea Level

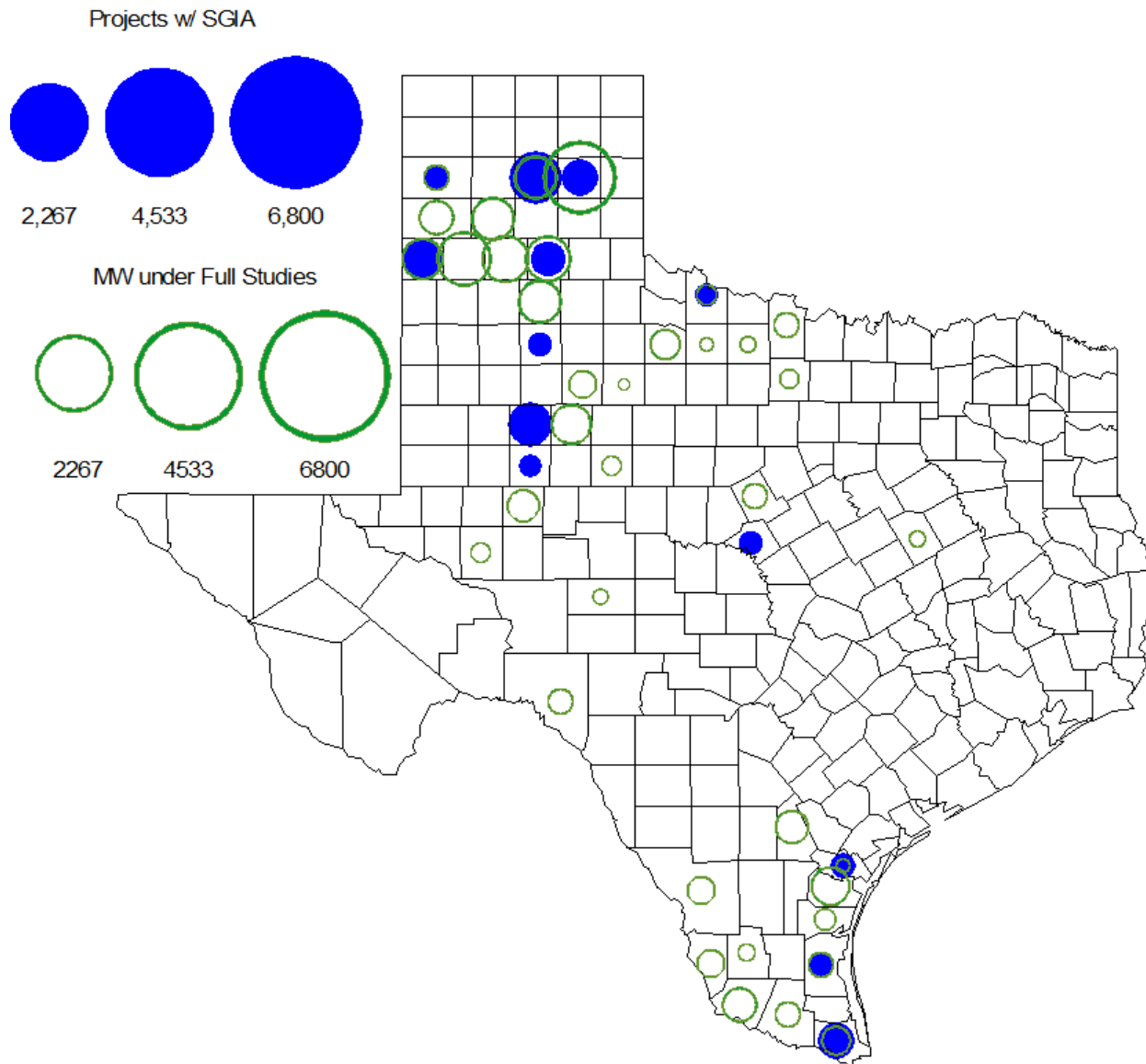
Planning Summary – March 2013

- ERCOT is currently tracking 159 active generation interconnection requests totaling almost 48,000 MW. This includes almost 21,000 MW of wind generation.
- ERCOT is currently reviewing proposed transmission improvements with a total cost of \$131 Million
- Transmission Projects endorsed in 2013 total \$282.5 Million
- All projects (in engineering, routing, licensing and construction) total approximately \$9.68 Billion.
- Transmission Projects energized in 2013 total about \$38.6 million.

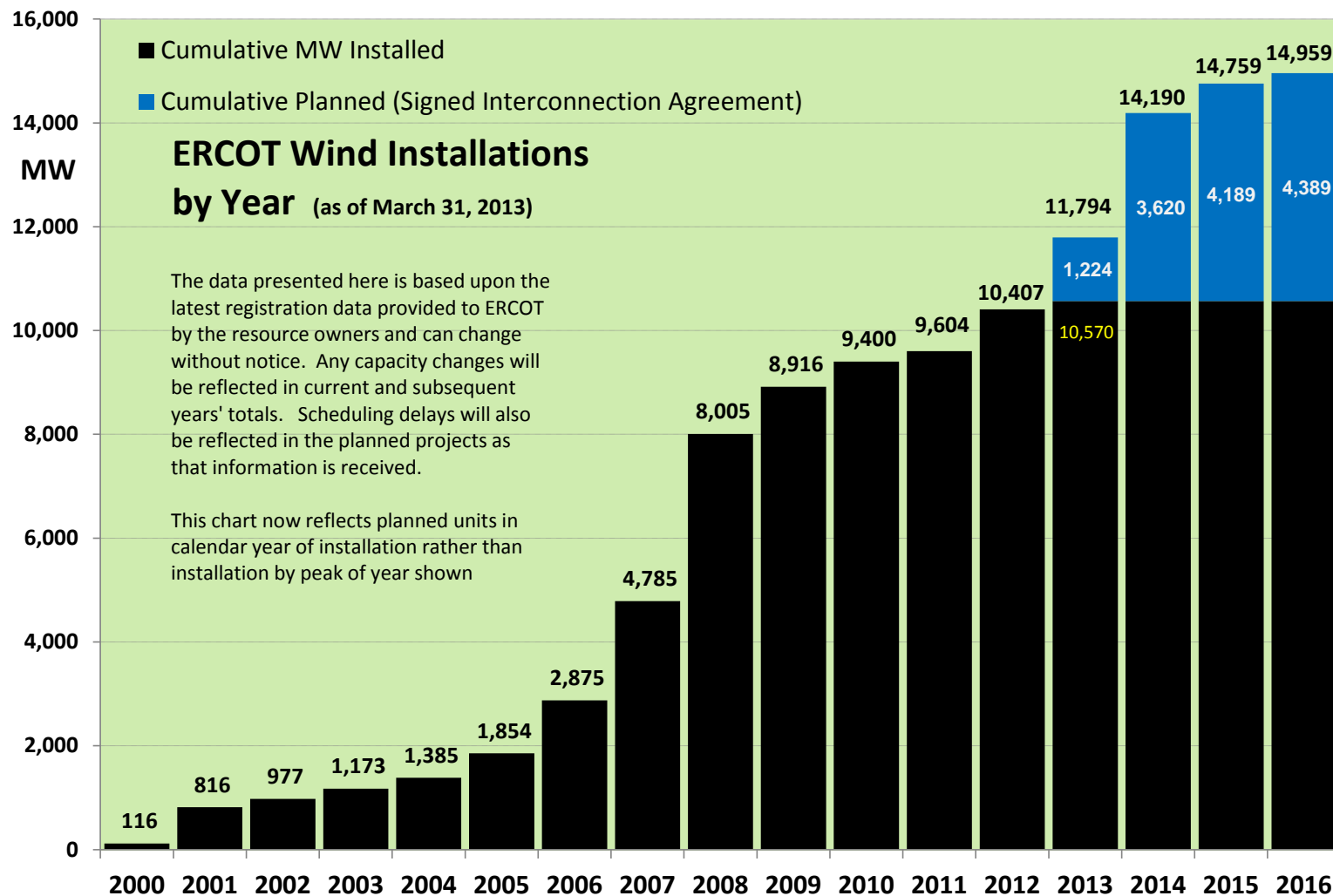
County Location of Planned Generation with Interconnection Requests (all fuels) **March 2013**



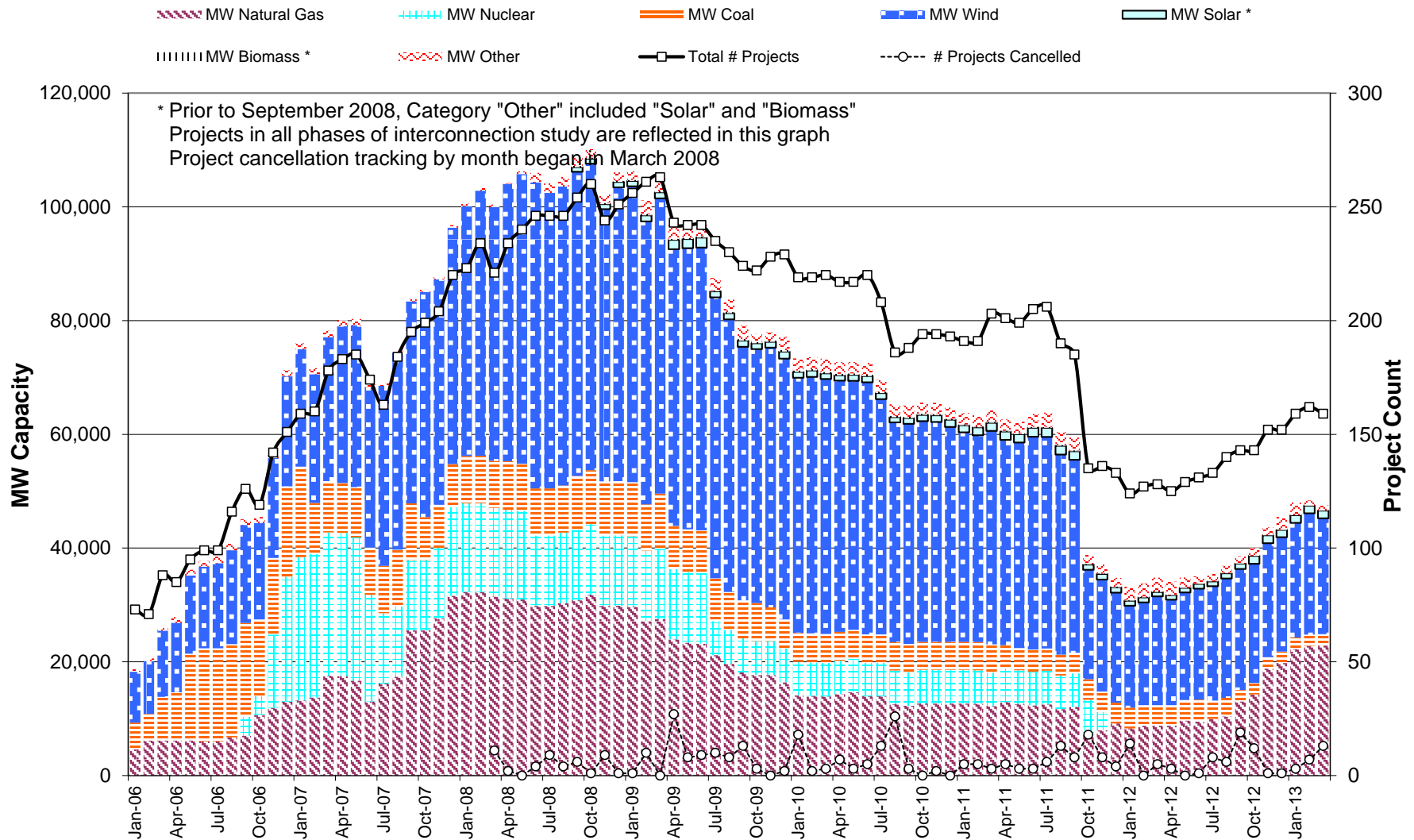
County Location of Planned Generation with Interconnection Requests (Wind) **March 2013**



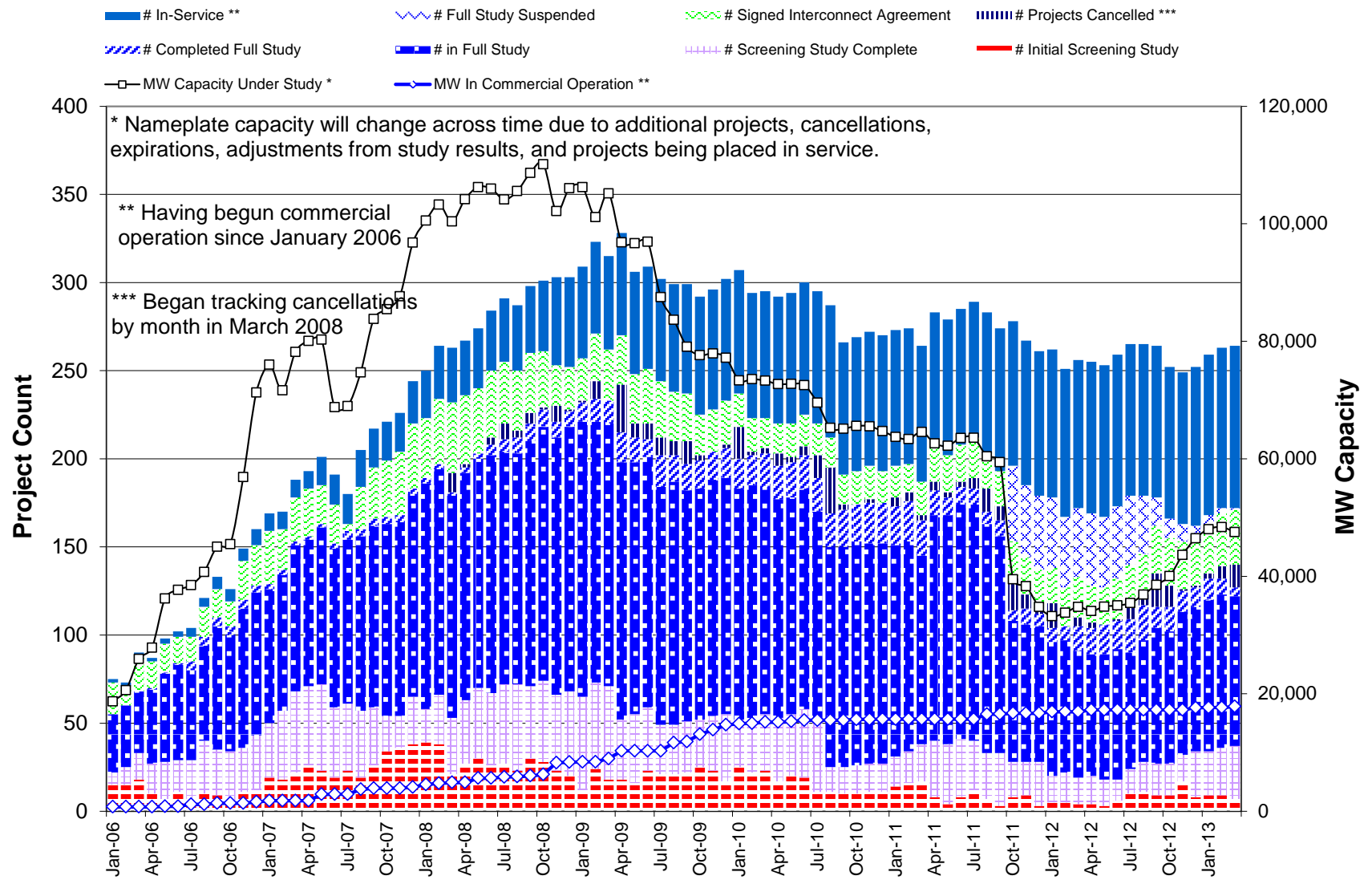
Wind Generation – March 2013



Generation Interconnection Activity by Fuel – March 2013



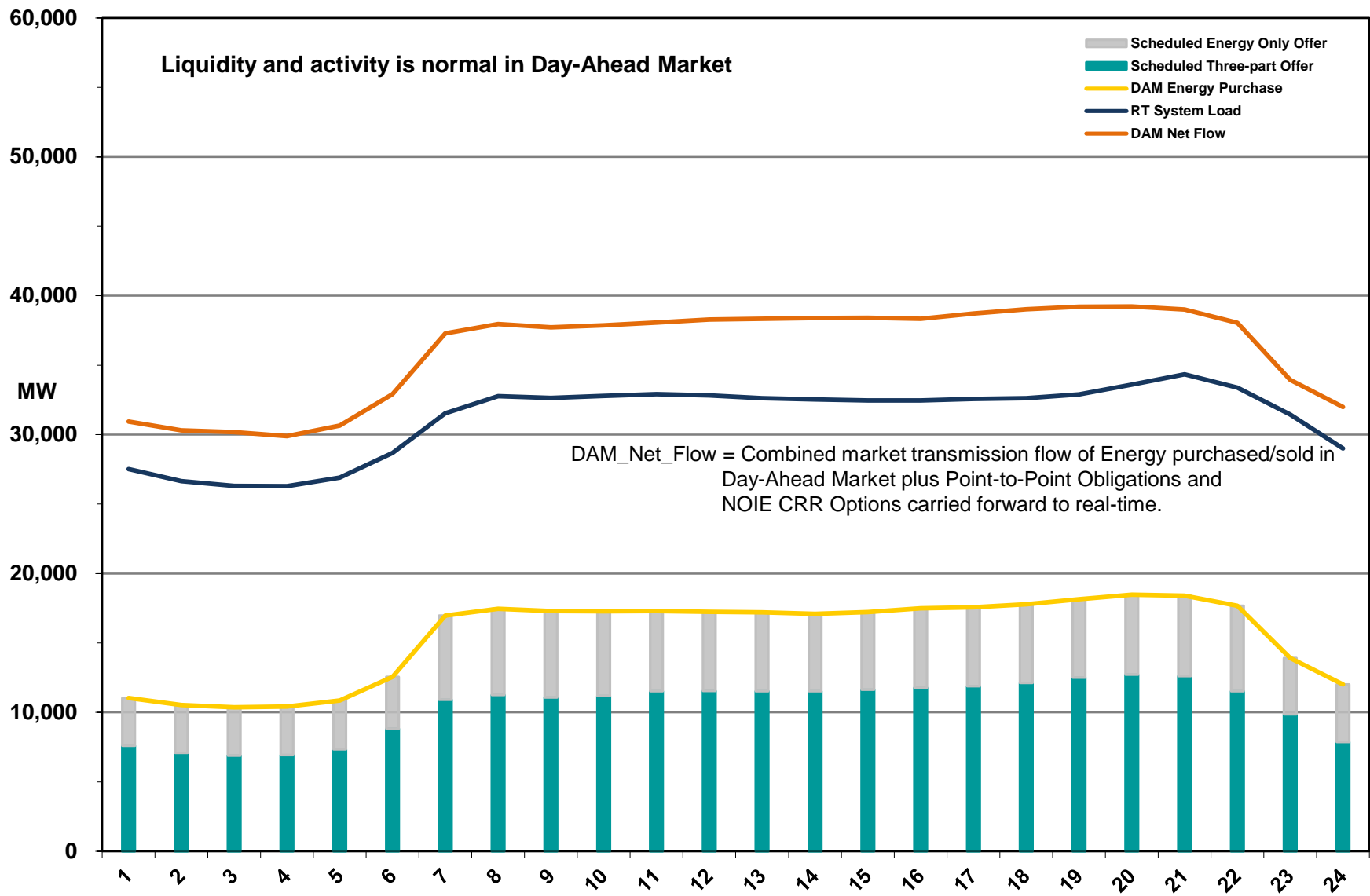
Generation Interconnection Activity by Project Phase – March 2013



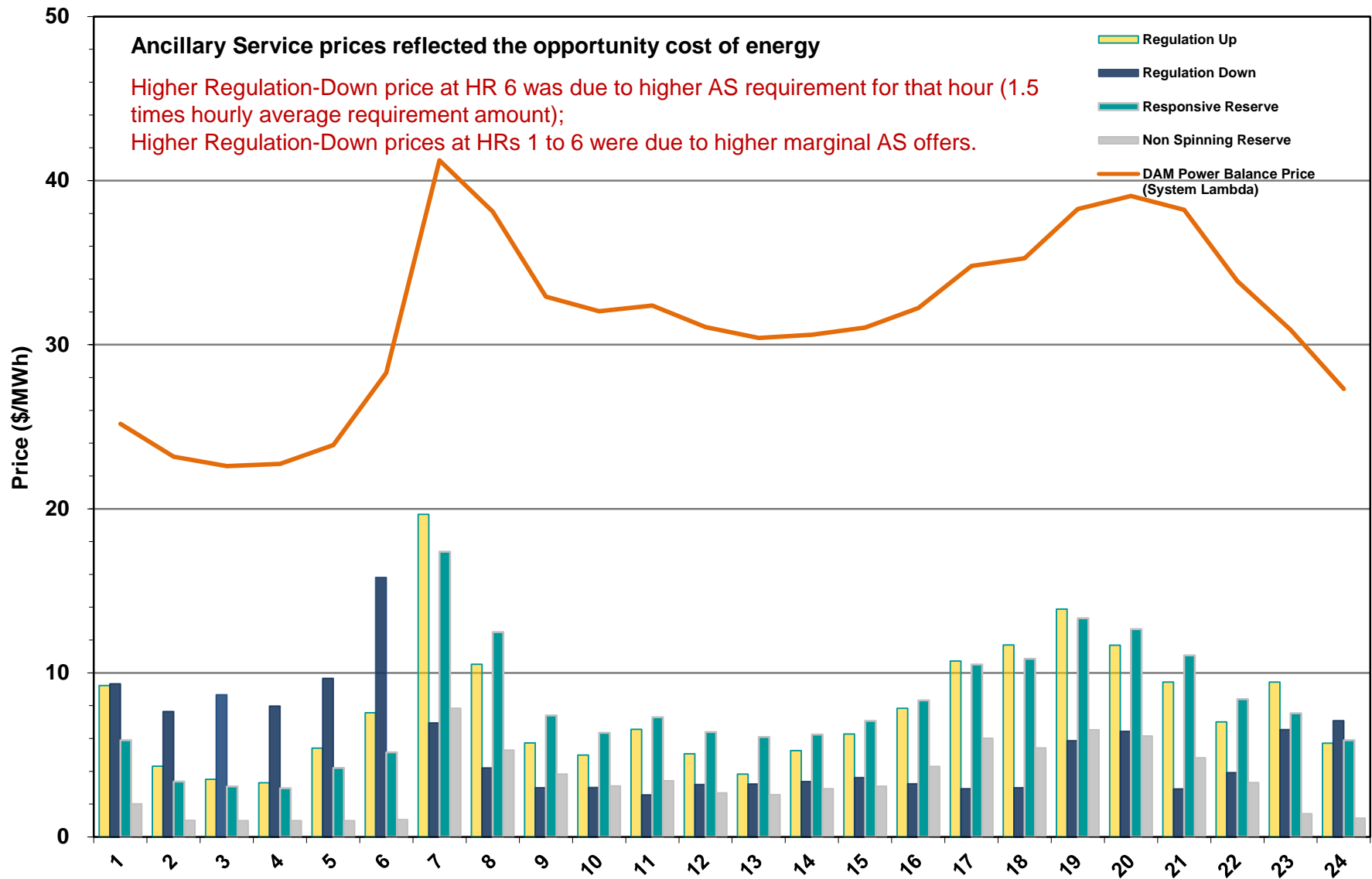


Market Operations

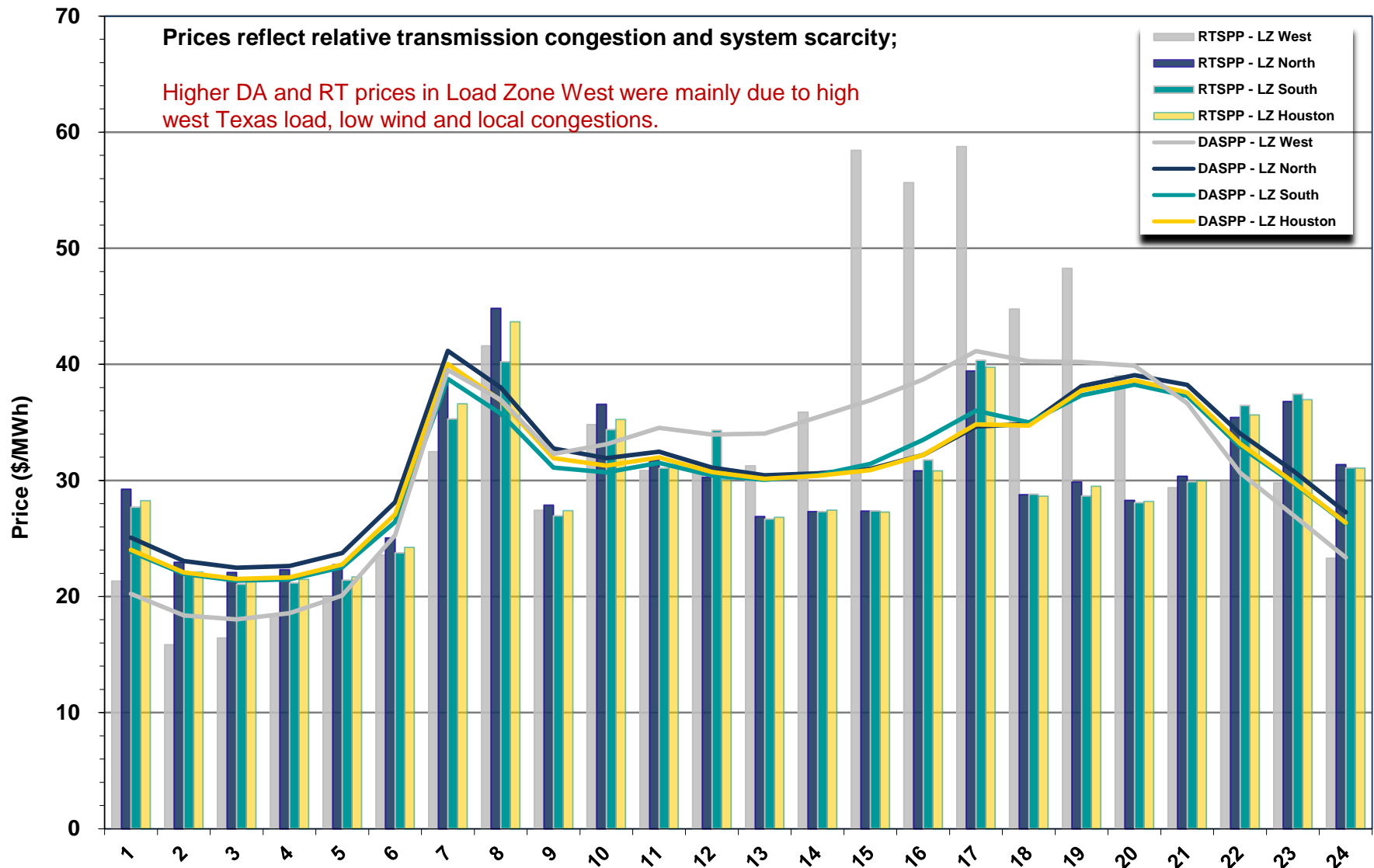
Day-Ahead Schedule – March 2013



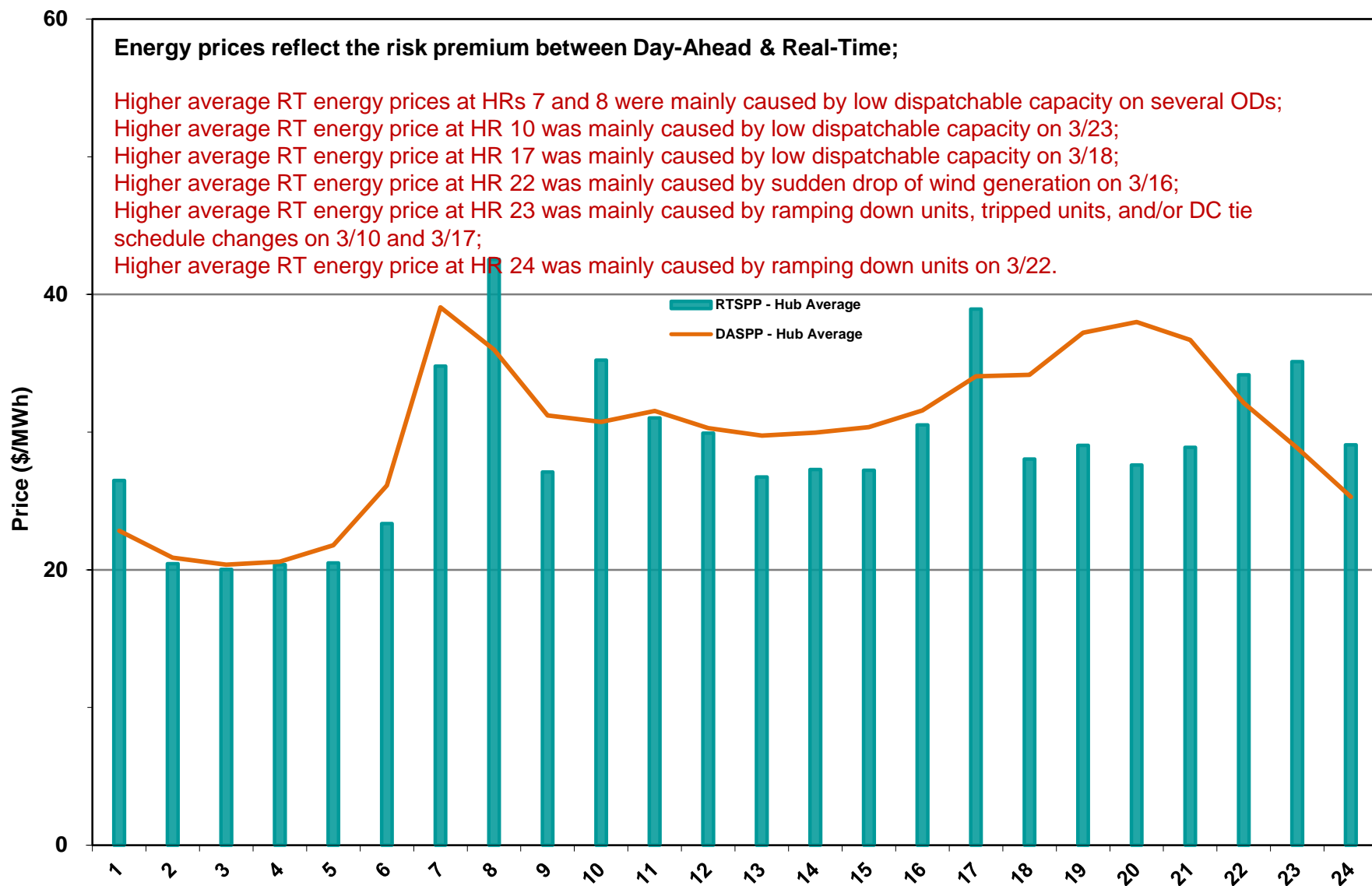
Day-Ahead Electricity And Ancillary Service Hourly Average Prices – March 2013



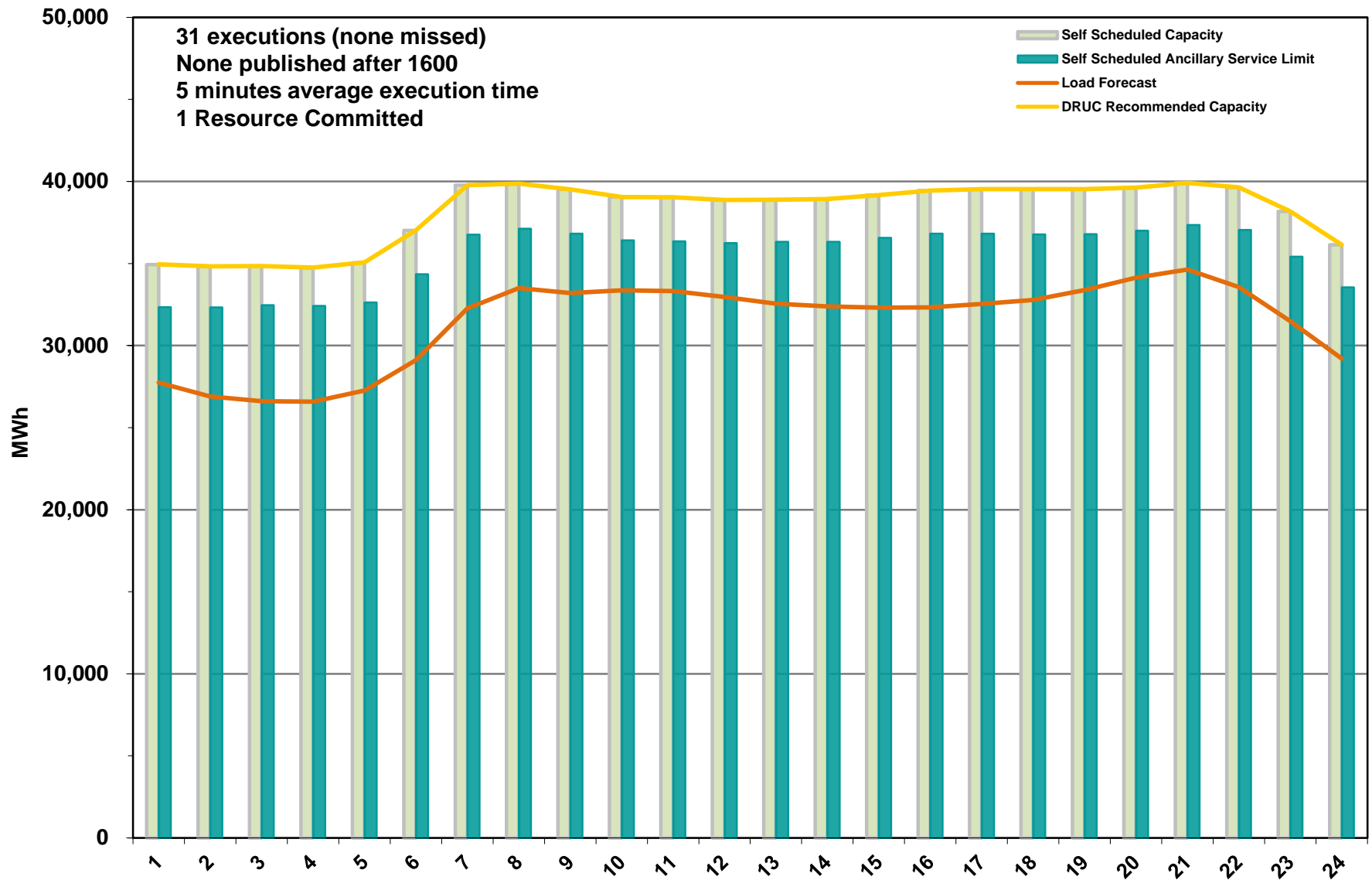
Day-Ahead Vs Real-Time Load Zone SPP (Hourly Average) - March 2013



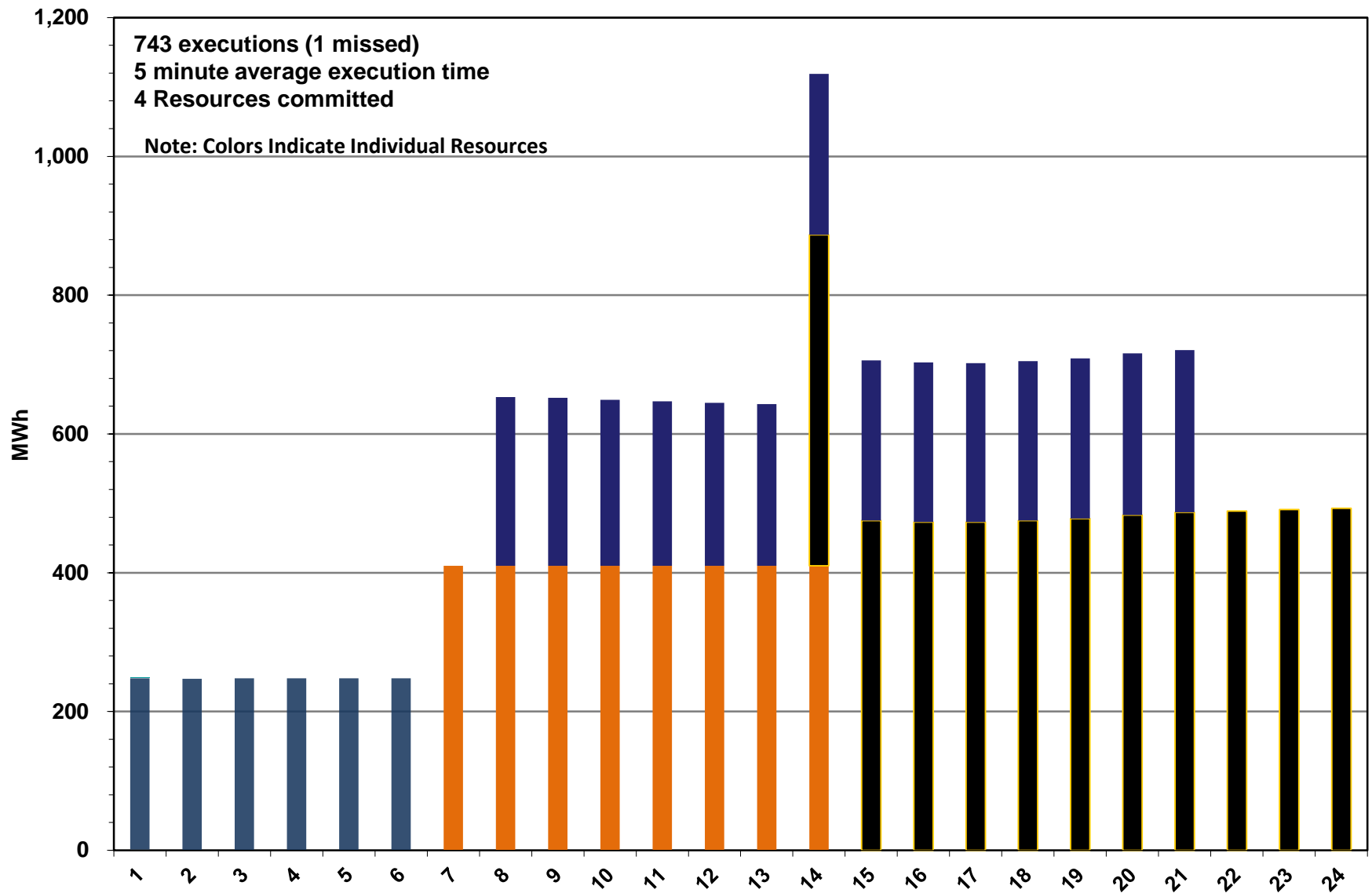
Day-Ahead Vs Real-Time Hub Average SPP (Hourly Average) - March 2013



DRUC Monthly Summary – March 2013



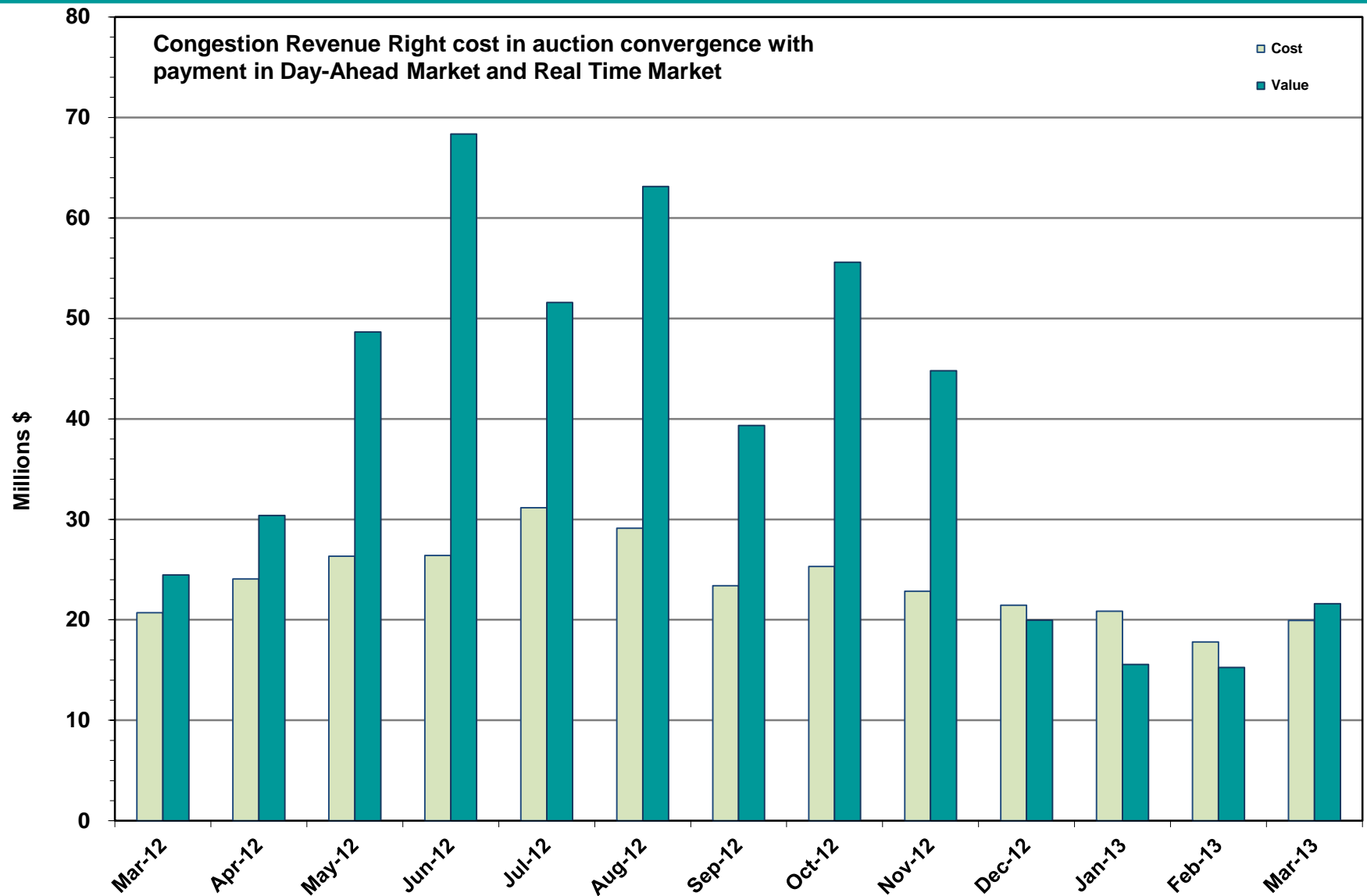
HRUC Monthly Summary – March 2013



Non-Spinning Reserve Service Deployment – March 2013

Deployment Start Time	Deployment End Time	Deployment Duration (Hours)	Max Deployment (MW)	Reason
None				

CRR Price Convergence – March 2013



ERS Procurement for February 2013 – May 2013

10-Minute ERS

	BH1	BH2	BH3	NBH
MW Procured	457.70	456.48	440.83	383.61
Average Price Per MW per Hour ¹	\$8.10	\$8.71	\$8.82	\$8.04

Note: One Generator procured with an average of 1.0 MW

30-Minute ERS Pilot

MW Procured	72.96	72.90	58.98	40.51
Clearing Price ²	\$7.81	\$8.60	\$8.90	\$7.80

BH1 - Business Hours 1 HE 0900 through 1300, Monday thru Friday except ERCOT Holidays
 BH2 - Business Hours 2 HE 1400 through 1600, Monday thru Friday except ERCOT Holidays
 BH3 - Business Hours 3 HE 1700 through 2000, Monday thru Friday except ERCOT Holidays
 NBH - Non-Business Hours All other hours

¹ Procured on a Pay-As-Offer basis

² Procured using a Clearing Price Mechanism

Reliability Services – March 2013

Reliability Unit Commitment (RUC)

\$ in Millions

RUC Make-Whole Payments	(\$0.08)
-------------------------	----------

RUC Clawback Charges	\$0.01
----------------------	--------

RUC Commitment Settlement	(\$0.07)
----------------------------------	-----------------

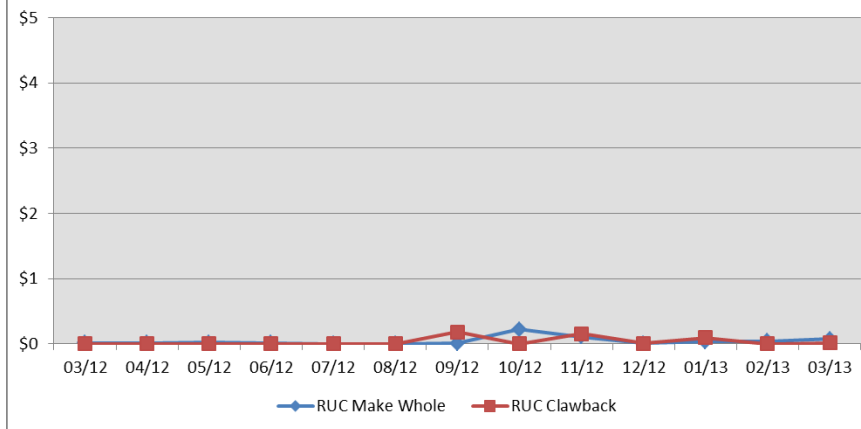
RUC Capacity Short Charges	\$0.08
----------------------------	--------

RUC Make-Whole Uplift	\$0.00
-----------------------	--------

RUC Commitment Cost Allocation	\$0.08
---------------------------------------	---------------

RUC Decommitment Payments	\$0.00
---------------------------	--------

Reliability Unit Commitment (\$Mil)



RUC Cost continues to trend low.

RUC Costs for March 2013 were a charge of \$0.08M, compared to:

- A charge of \$0.04 in February 2013
- A charge of \$0.01 in March 2012

Ancillary Services – March 2013

Capacity Services	\$ in Millions
Regulation Up Service	\$2.88
Regulation Down Service	\$1.67
Responsive Reserve Service	\$13.2
Non-Spinning Reserve Service	\$3.62
Black Start Service	\$0.58
Voltage Services - Reactive Power	\$0.0
Voltage Services - Lost Opportunity	\$0.0
Total Capacity Service	\$21.99

Capacity Services costs were lower than last month and than March 2012.

March 2013 cost was \$21.99M, compared to:

- A charge of \$ 26.66M in February 2013
- A charge of \$25.61M in March 2012

Energy Settlement – March 2013

Day-Ahead Market Energy Settlement

\$ in Millions

Energy Purchases	\$373.89
Point to Point Obligation Purchases	\$16.60
RMR Day-Ahead Revenue	\$0.00
Energy Sales	(\$365.99)
Day-Ahead Congestion Rent	\$24.50
Day-Ahead Market Make-Whole Payments	(\$0.17)

Day-Ahead Market settlement increased from last month and is higher than March 2012.

Real-Time energy settlement decreased slightly from March 2012 and is higher than last month

Real-Time Market Energy Settlement

\$ in Millions

Energy Imbalance at a Resource Node	(\$409.80)
Energy Imbalance at a Load Zone	\$576.31
Energy Imbalance at a Hub	(\$139.49)
Real Time Congestion from Self Schedules	\$0.26
Block Load Transfers and DC Ties	(\$5.69)
Impact to Revenue Neutrality	\$21.59
Emergency Energy Payments	(\$0.07)
Base Point Deviation Charges	\$0.30
Real-Time Metered Generation (MWh in millions)	23.11

Congestion Revenue Rights (CRR) – March 2013

Auction Disbursements	\$ in Millions
Annual Auction	(\$15.52)
Monthly Auction	(\$3.18)
Total Auction Revenue	(\$18.70)
Day-Ahead CRR Settlement	(\$21.61)
Day-Ahead CRR Short-Charges	\$0.53
Day-Ahead CRR Short-Charges Refunded	(\$0.53)
Real-Time CRR Settlement	(\$0.00)
Real-Time CRR Short-Charges	\$0.00
Real-Time CRR Short-Charges Refunded	(\$0.00)
Total CRR Proceeds	(\$21.61)
Day-Ahead Point to Point Obligations Settlement	\$16.60
Real-Time Point to Point Obligation Settlement	(\$21.70)
Net Point to Point Obligation Settlement	(\$5.10)

Congestion Revenue Rights were fully funded. Excess funds were available for distribution to load.

Distribution of balancing account funds to load for March 2013 was \$2.93M, compared to:

- \$0.40M in February 2013
- \$7.97M in March 2012

Point to Point Obligations settled with a net gain of \$5.10M.

Revenue Neutrality – March 2013

Revenue Neutrality Settlement

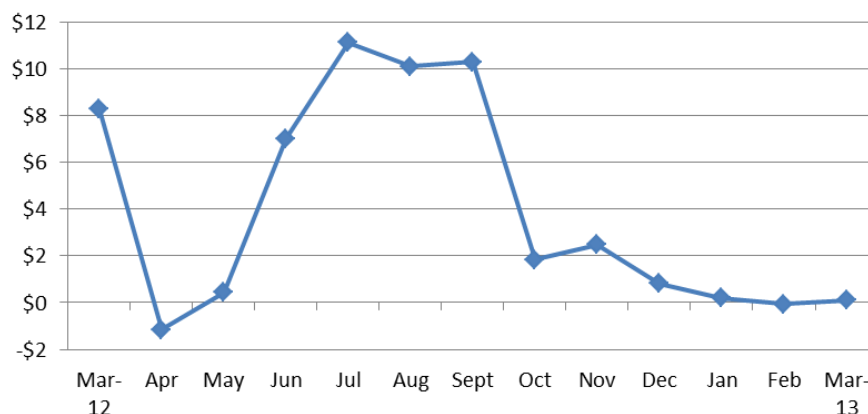
	\$ in Millions
Real-Time Point to Point Obligation Settlement	(\$21.70)
Real-Time Point to Point Options and Options with Refund Settlement	(\$0.00)
Real-Time Energy Imbalance Settlement	\$27.03
Real-Time Congestion from Self-Schedules Settlement	\$0.26
DC Tie & Block Load Transfer Settlement	(\$5.69)
Charge to Load	\$0.10

Revenue Neutrality charges to load increased slightly compared to February 2013 and are much lower than March 2012.

March 2013 was a charge of \$0.10M, compared to:

- \$0.07M credit in February 2013
- \$8.29M charge in March 2012

Revenue Neutrality Uplift (\$Mil)



Net Uplift to Load – March 2013

Market-Based Uplifts

\$ in Millions

CRR Auction Revenue Disbursement Settlement	(\$18.70)
---	-----------

Balancing Account Proceeds Settlement	(\$2.93)
---------------------------------------	----------

Net Reliability Unit Commitment Settlement	\$0.07
--	--------

Ancillary Services Settlement	\$21.99
-------------------------------	---------

Reliability Must Run Services Settlement	\$0.0
--	-------

Reliability Must Run for Capacity	\$0.0
-----------------------------------	-------

Real-Time Revenue Neutrality Settlement	\$0.10
---	--------

Emergency Energy Settlement	\$0.07
-----------------------------	--------

Base Point Deviation Settlement	(\$0.30)
---------------------------------	----------

Total	\$0.29
--------------	---------------

Fee Uplifts

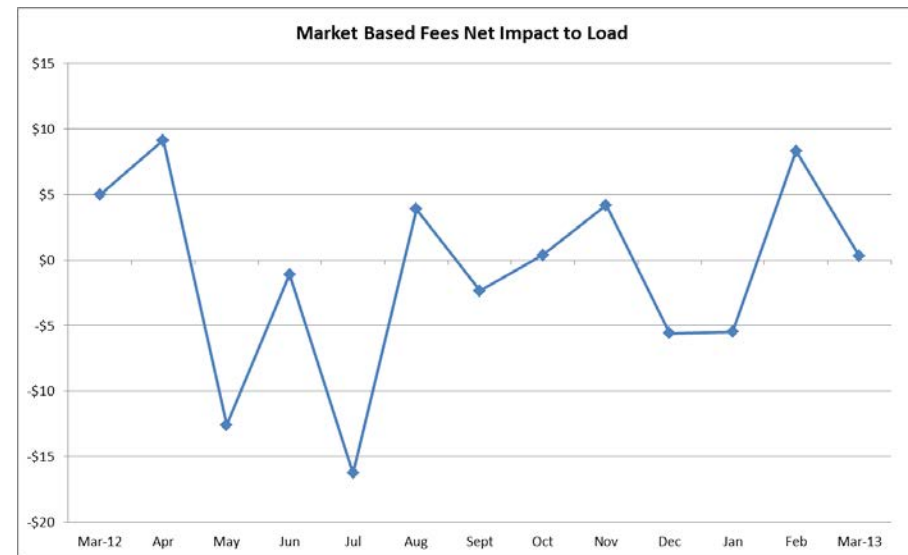
ERCOT Administrative Fee Settlement	\$9.74
-------------------------------------	--------

Net Uplift Charge to Load	\$10.03
----------------------------------	----------------

Net uplift to Load decreased from last month and from March of 2012.

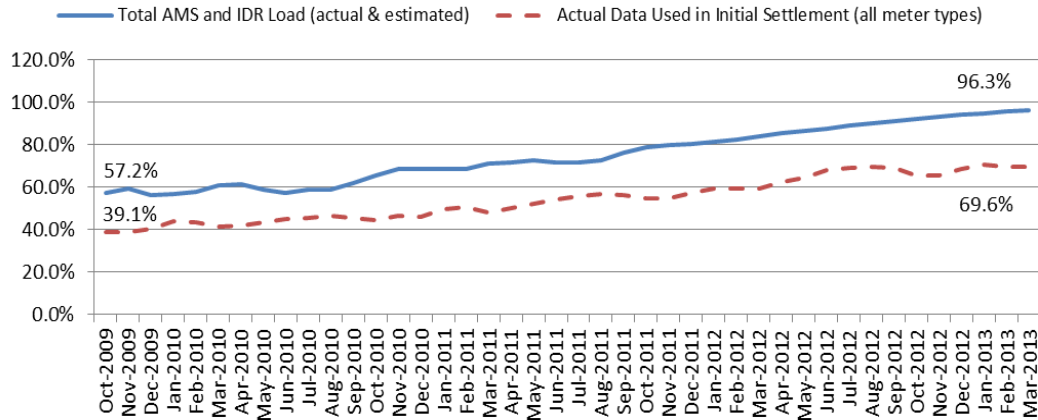
March 2013 was a charge of \$10.03M, compared to:

- A charge of \$17.20M in February 2013
- A charge of \$14.67M in March 2012



Advanced Meter Settlement Impacts – March 2013

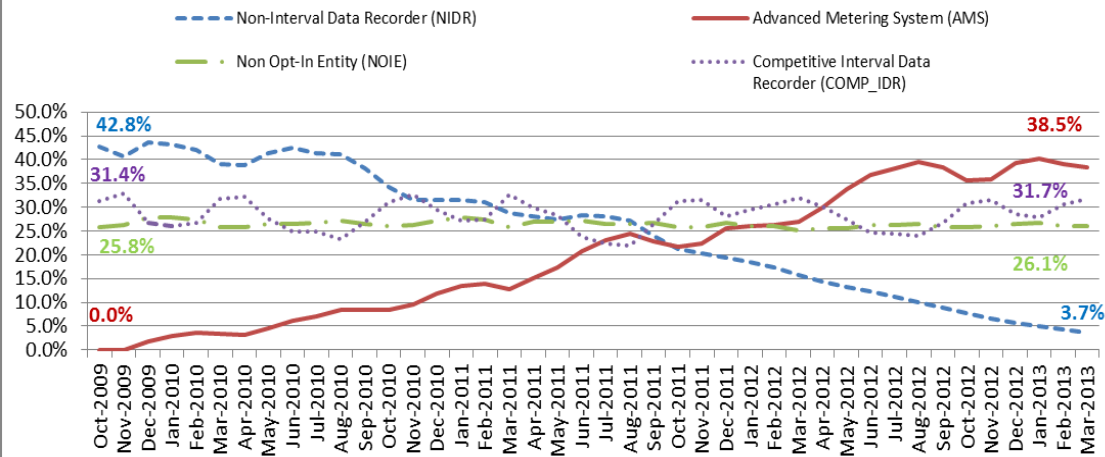
Percent Actual/Percent Interval Data Recorder (IDR)



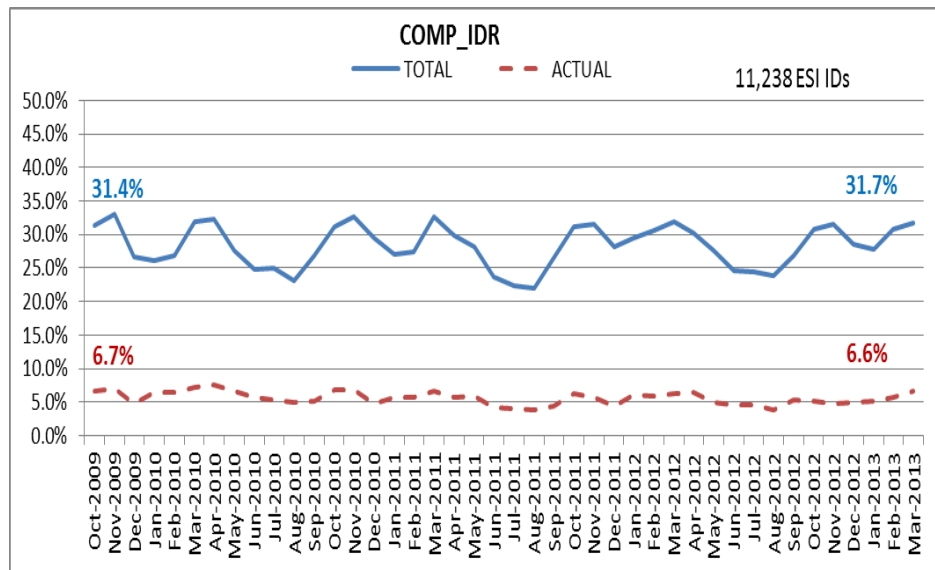
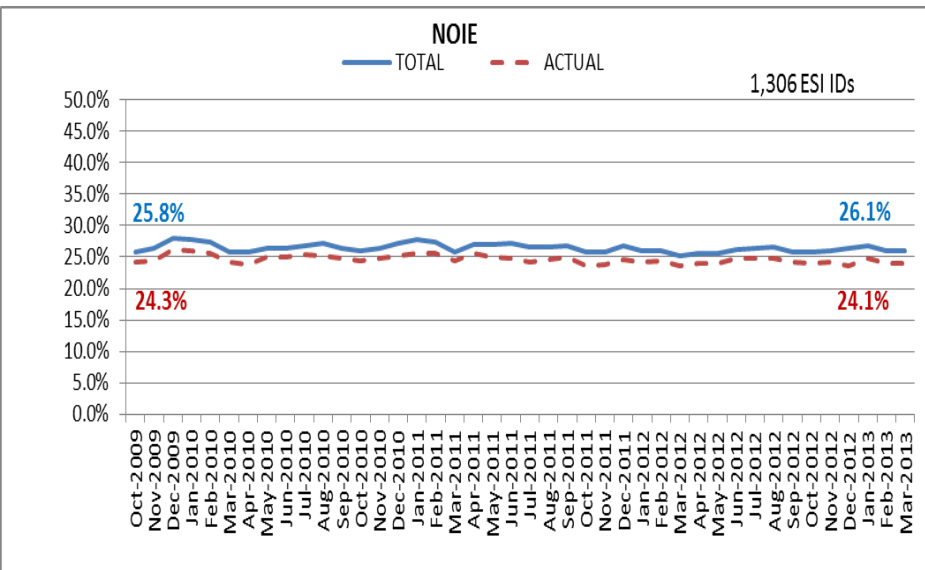
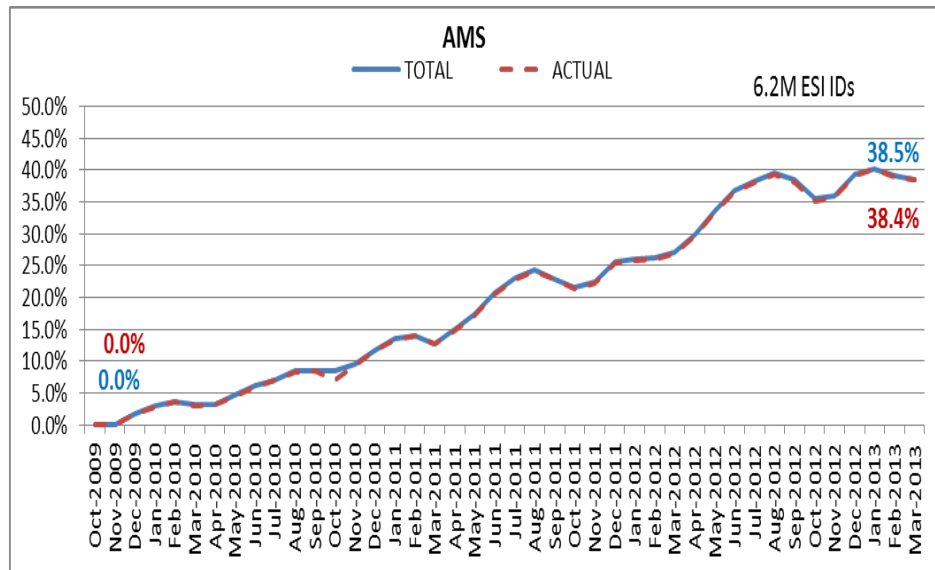
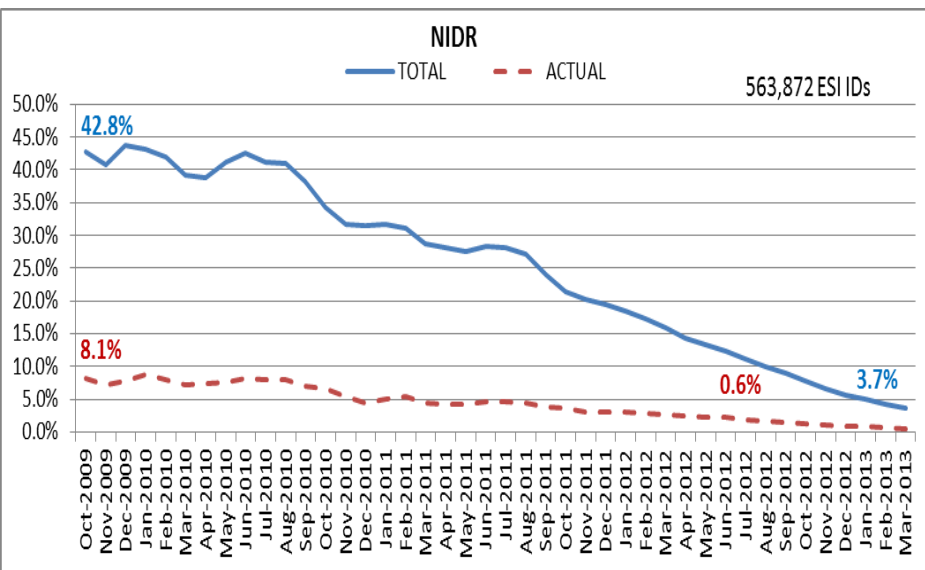
March 2013: At month end, settling 6.2M ESIIDs using Advanced Meter data.

March 2013: 96.3% of the load in ERCOT is settled with 15-min interval data (AMS, Competitive IDR, and NOIE IDR).

Percent of Load by Meter Type



ERCOT Wide Load Volumes by Meter Type – INITIAL Settlement – March 2013

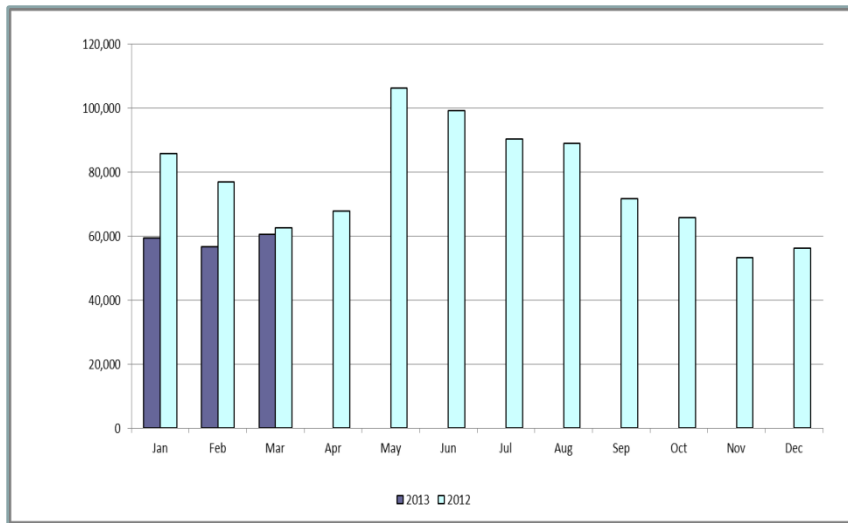


Retail Transaction Volumes – Summary – March 2013

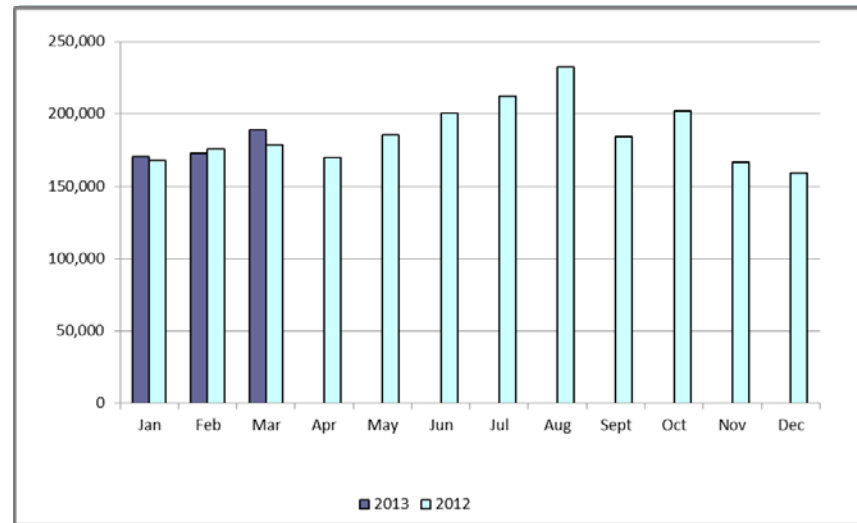
Transaction Type	Year-To-Date		Transactions Completed	
	Mar 2013	Mar 2012	Mar 2013	Mar 2012
Switches	176,481	225,187	60,457	62,510
Acquisition	126	0	71	0
Move - Ins	532,638	521,927	189,266	178,721
Move - Outs	258,592	249,847	89,676	83,955
Continuous Service Agreements (CSA)	111,942	126,208	38,296	50,107
Mass Transitions	0	0	0	0
Total	1,079,779	1,123,169	377,766	375,293
Total since June 1, 2001	50,971,305			

Retail Transaction Volumes – Summary – March 2013

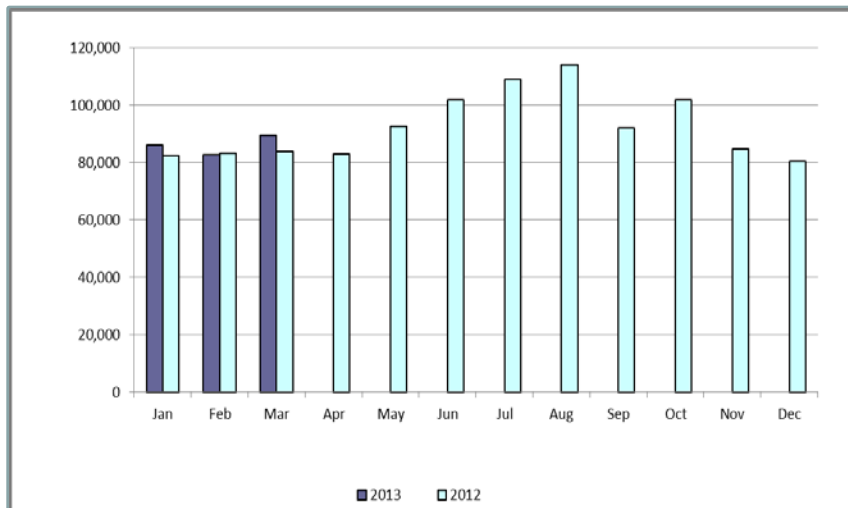
Switches/Acquisitions



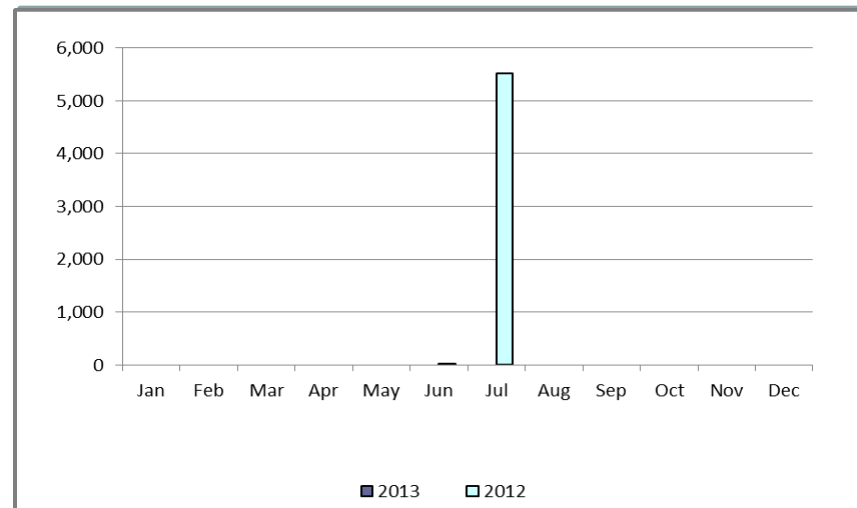
Move-Ins



Move-Outs

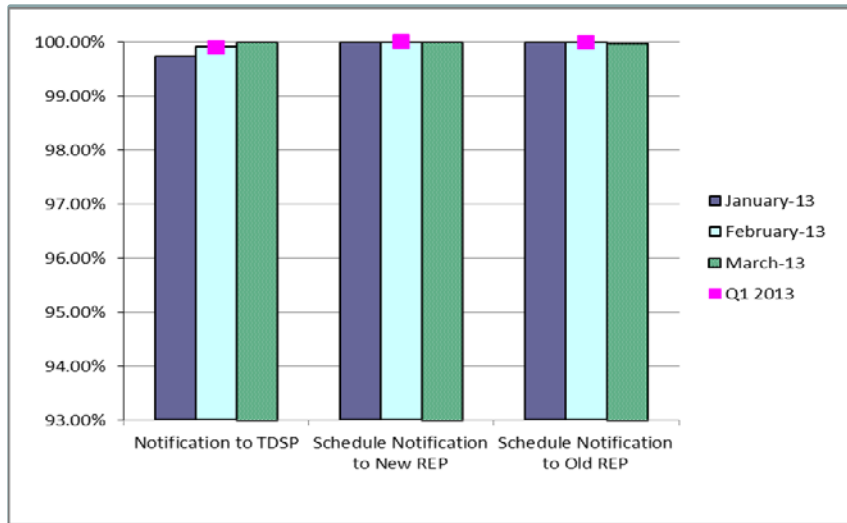


Mass Transition

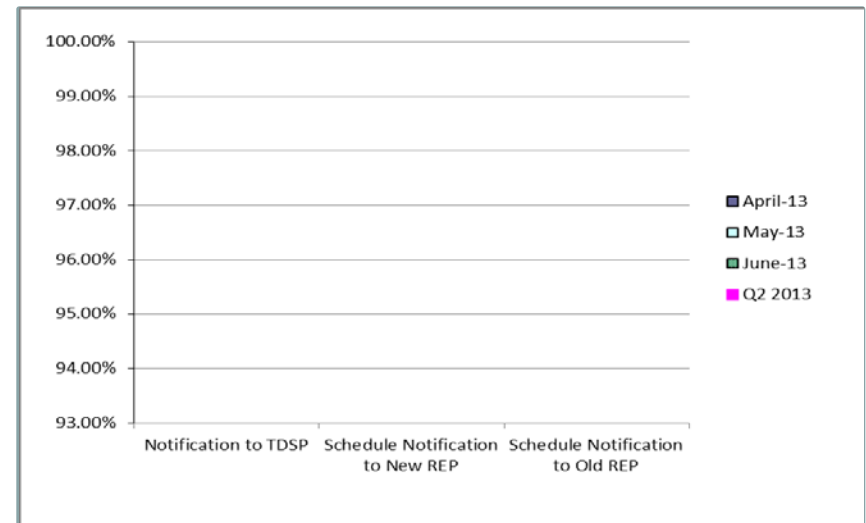


Retail Performance Measures – Switch – March 2013

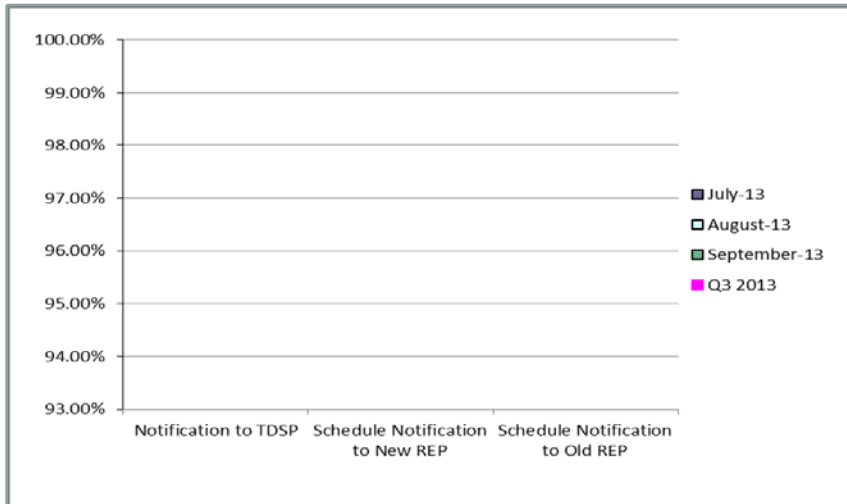
1st Quarter



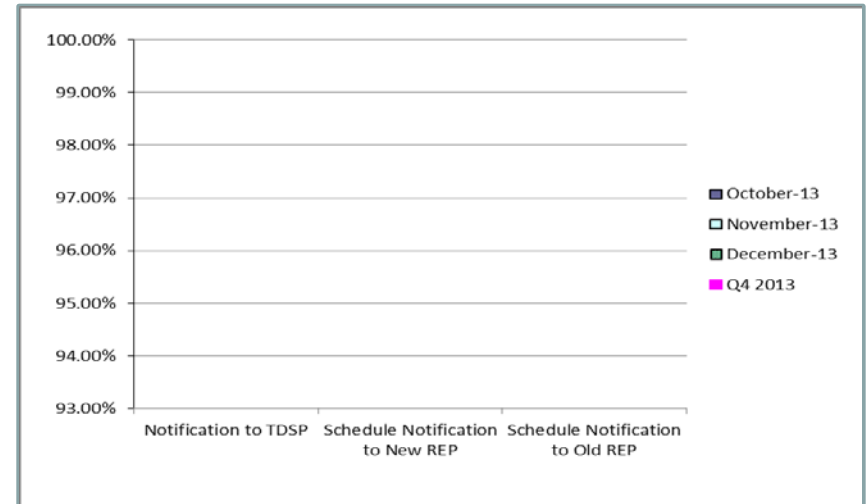
2nd Quarter



3rd Quarter

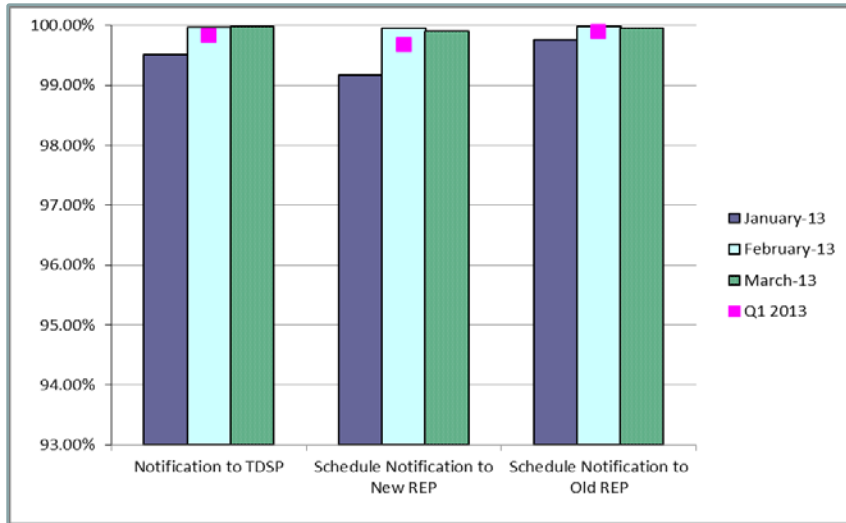


4th Quarter

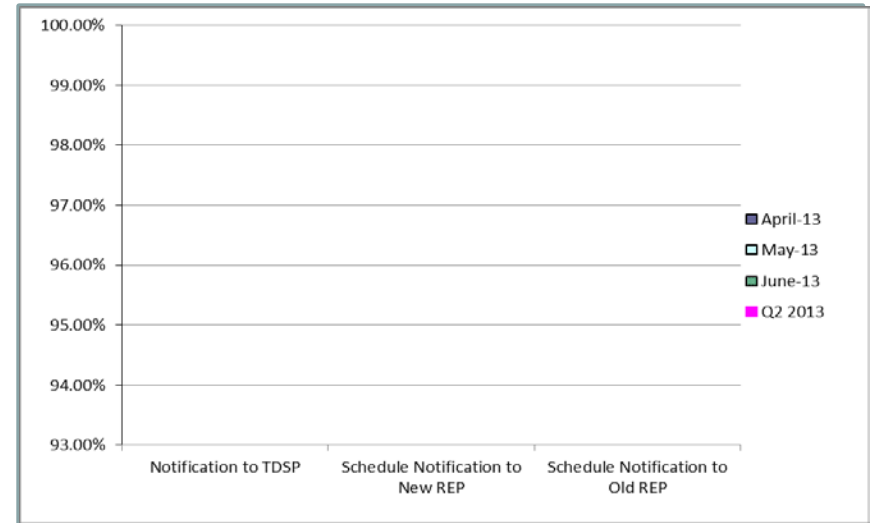


Retail Performance Measures (Priority Move-In) – March 2013

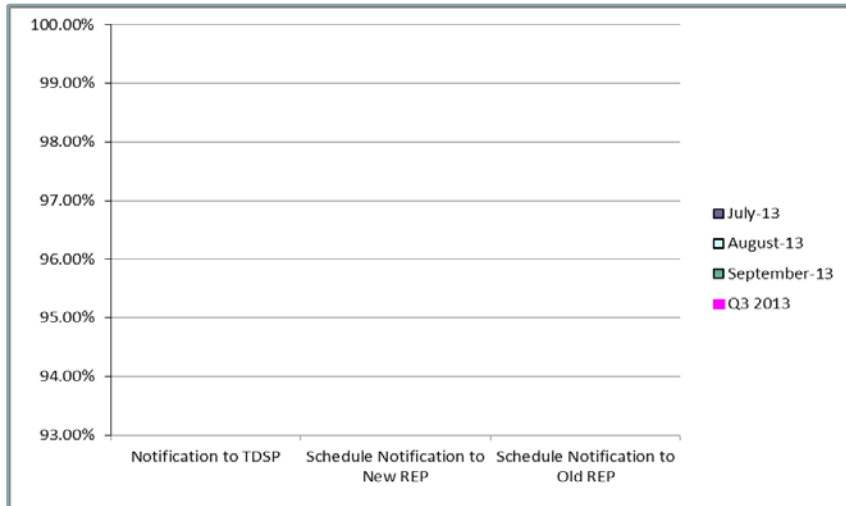
1st Quarter



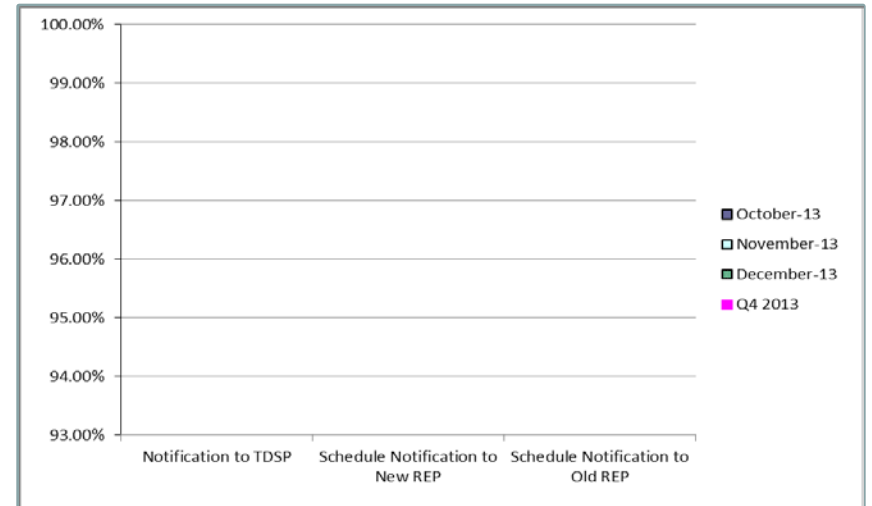
2nd Quarter



3rd Quarter

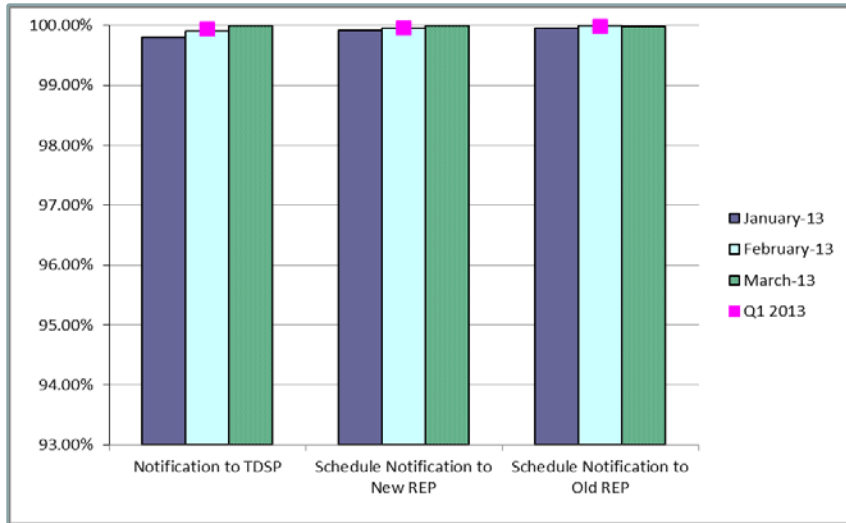


4th Quarter

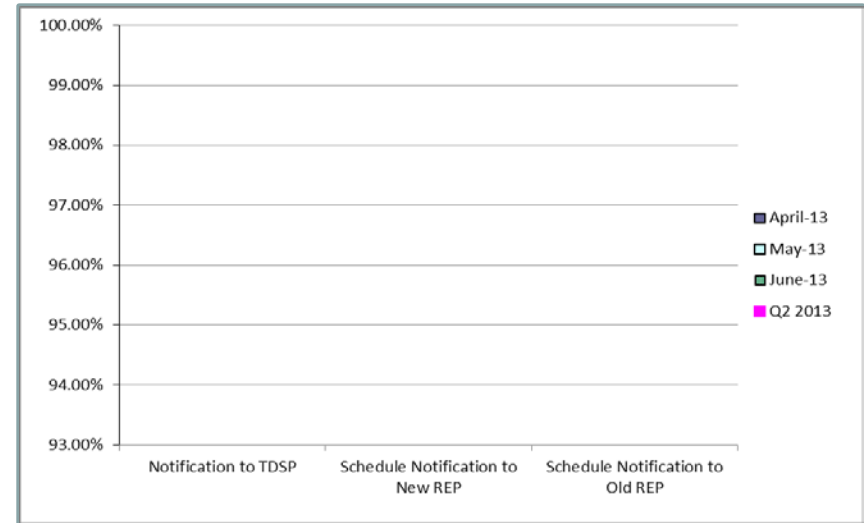


Retail Performance Measures (Standard Move-In) – March 2013

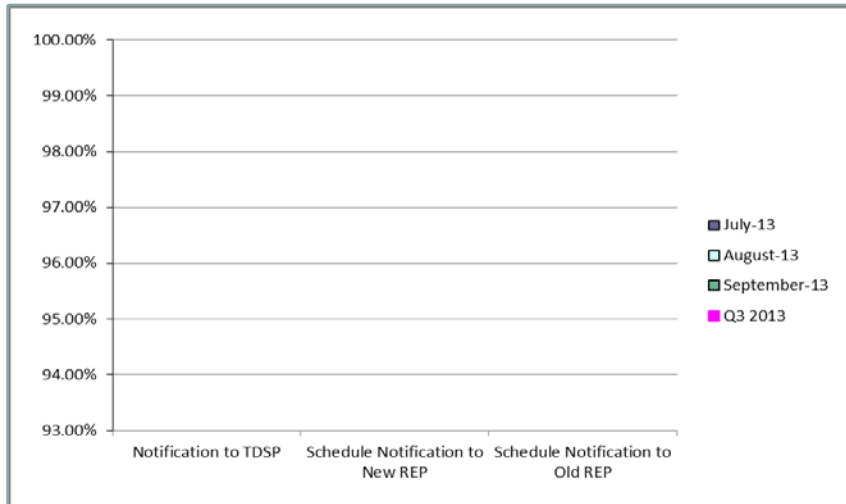
1st Quarter



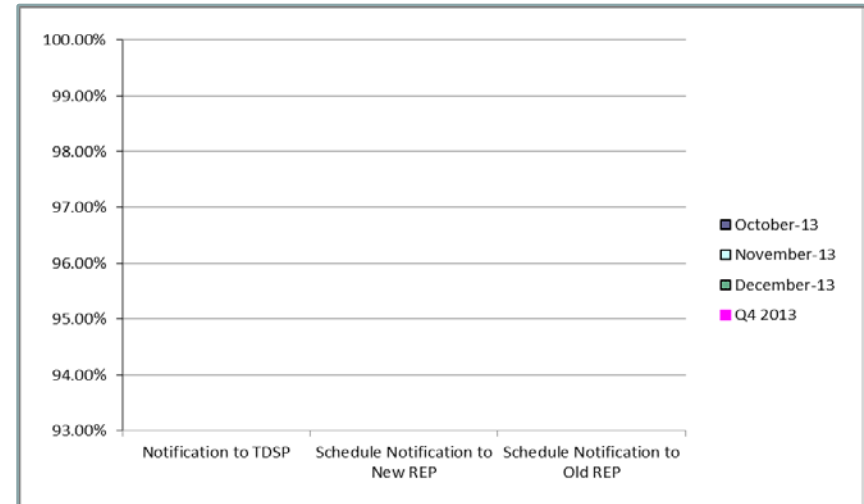
2nd Quarter



3rd Quarter



4th Quarter





Projects Report

ERCOT Portfolio Stoplight Report (as of 4/10/2013)

Project Number	Project Name	Phase	Baseline Phase Start	Baseline Phase Finish	Scheduled Phase Finish	Schedule Status	Sum of 2013 Budgets	2013 Forecast Spend	2013 Variance	Sum of Total Budgets	Total Forecast Spend	Total Variance	
PROJECTS IN FLIGHT (Count = 52) Sorted by Phase / Project Num							\$ 16,592,632	\$ 15,310,973	7%	\$ 35,217,097	\$ 33,711,124	4%	
065-01	NMMS Upgrade	Initiation							0%			2%	
TBD	ABB MMS OS Technology Refresh	Initiation							0%			0%	
TBD	EPG Synchrophasor Upgrade	Initiation							0%			0%	
NPRR272	Definition and Participation of Quick Start Generation Resources	Initiation							31%			31%	
NPRR385	Negative Price Floor	Initiation							35%			35%	
047-01	CMS and MIR Replacement	Planning	5/31/2012	12/19/2012	4/25/2013	1 -62%			2%			0%	
052-01	EMS Upgrade	Planning	7/25/2012	3/27/2013	3/27/2013	0%			26%			7%	
057-01	EPS Metering DB Redesign	Planning	7/5/2012	2/27/2013	4/17/2013	1 -20%			9%			8%	
059-01	Security Information and Event Management (SIEM) Upgrade	Planning	11/21/2012	5/8/2013	5/8/2013	0%			-2%			0%	
066-01	Planning Site Transition to MIS	Planning	1/9/2013	3/25/2013	6/19/2013	3 -114%			-1%			0%	
070-01	Linux Configuration Management Tool	Planning	1/24/2013	6/26/2013	6/26/2013	0%			0%			0%	
071-01	Windows Server Systems Management	Planning	1/23/2013	6/26/2013	6/27/2013	0%			0%			0%	
072-01	OSI PI Upgrades - EMS Production	Planning	1/23/2013	4/10/2013	4/11/2013	-1%			6%			6%	
077-01	Contract Lifecycle Management	Planning	2/13/2013	6/12/2013	6/12/2013	0%			0%			0%	
081-01	Additional Resource Data for Outage Scheduler	Planning	3/4/2013	5/22/2013	5/22/2013	0%			12%			11%	
083-01	Centralized Application Log Management	Planning	3/6/2013	5/15/2013	5/16/2013	-1%			0%			0%	
089-01	Information Technology Change Management	Planning	4/10/2013	5/29/2013	5/29/2013	0%			0%			0%	
095-01	Mobile Application Enhancement	Planning	4/3/2013	5/22/2013	5/22/2013	0%			0%			0%	
096-01	Backup Software Strategy and Proposed License Cost Reduction	Planning	4/10/2013	5/22/2013	5/22/2013	0%			0%			0%	
NPRR153	Generation Resource Fixed Quantity Block Offer	Planning	4/10/2013	4/24/2013	4/24/2013	0%			0%			0%	
NPRR327	State Estimator Data Reduction Methodology	On Hold	12/5/2012	2/12/2013		4			3%			8%	
NPRR425	Creation of a WGR Group for GREDP and Base Point Deviation Evaluation	Planning	3/13/2013	4/17/2013	4/17/2013				0%			0%	
NPRR457	Daily Update of New ESI IDs and AMS Meter and Switch Hold Indicators Changes	Planning	4/10/2013	5/29/2013	5/29/2013	0%			0%			0%	
NPRR476	Market Submitted Energy Offer Curves Disclosures	Planning	4/10/2013	6/12/2013	6/12/2013	0%			0%			0%	
NPRR484	Revisions to Congestion Revenue Rights Credit Calculations and Payments	Planning	4/10/2013	5/29/2013	5/29/2013	0%			0%			0%	
NPRR520	Real-Time Mitigation Rules and Creation of a Real-Time Constraint Competitiveness Test	Planning	3/27/2013	4/24/2013	4/24/2013	0%			0%			0%	
010-02	MarkeTrak Upgrade	Execution	12/12/2012	7/31/2013	7/30/2013				3%			3%	
016-01	ADP-IDM Interface	On Hold	5/23/2012	11/7/2012		4						0%	
017-01	Oracle 11g Upgrade	Execution	10/10/2012	8/21/2013	8/21/2013				3%			13%	
019-01	ERCOT Website Enhancements - 2012	On Hold	3/8/2012	12/26/2012		4					3	-96%	
038-01	Macomber Map NERC SA/Compliance Enhancements	Execution	9/19/2012	2/28/2013	7/15/2013	3 -84%			3%			-1%	
042-01	CRR Upgrade to v12.3	Execution	5/16/2012	8/14/2013	8/14/2013	0%			35%			19%	
048-01	TSAT Wind Model	Execution	8/16/2012	5/31/2013	5/24/2013	2%			-8%			10%	
055-01	Siebel Upgrade 8.x	Execution	3/13/2013	8/31/2013	8/23/2013	4%			19%			12%	
067-01	Physical Security Upgrade	Execution	2/13/2013	9/16/2013	9/11/2013	2%			4%			4%	
074-01	Mobile Device Management - POC	Execution	3/13/2013	6/5/2013	6/5/2013	0%			-4%			-1%	
075-01	Operator Data Display	Execution	4/10/2013	10/29/2013	10/29/2013	0%			29%			31%	
2013 PC	Program Control - 2013	Execution	8/16/2012	5/31/2013	5/28/2013	1%			-3%			-3%	
088-0x	Capital Efficiencies and Enhancements - 2013	Execution	8/16/2012	5/31/2013	5/28/2013	1%			2%			2%	
10052_01	Settlement System Upgrade	Execution	1/25/2012	12/30/2014	12/30/2014	0%			0%			-4%	
90006_02	Information Lifecycle Mgmt - Mkt Systems, Archive, Reporting	Execution	4/22/2011	5/1/2013	5/13/2013	-1%			3%			13%	
99913	Minor Cap - 2013	Execution	1/1/2013	12/31/2013	12/31/2013	0%			-11%			6	-11%
NPRR393	SCED Constraint Management Transparency	Execution	3/13/2013	7/10/2013	7/10/2013	0%			3%			3%	
NPRR416	Removal of the RUC Clawback Charge for Resources Other than RMR Units	Execution	4/10/2013	10/26/2013	10/26/2013	0%			38%			37%	
NPRR456	Clarification of Definition of Electrically Similar Settlement Points and Heuristic Pricing Posting	Execution	2/14/2013	5/15/2013	5/15/2013	0%			31%			31%	
NPRR461	Energy Storage Settlements Consistent with PUCT Project 39917	Execution	3/13/2013	8/30/2013	7/4/2013	33%			14%			14%	
NPRR463	CRR Auction Structure Enhancements	Execution	12/20/2012	6/5/2013	6/5/2013	0%			11%			5%	
NPRR479	Daily Net Outage MW	Execution	4/10/2013	8/28/2013	8/28/2013	0%			0%			0%	
NPRR481	Report of Hourly Actual System Load by Weather Zone	Execution	4/10/2013	7/10/2013	7/10/2013	0%			0%			0%	
NOGRR093	Synchronization with NPRR365	Execution	3/27/2013	7/3/2013	7/3/2013	0%			5%			4%	
SCR760	Recommended Changes Needed for Information Model Mgr and Topology Processor for Planning Models	Execution	8/25/2011	7/31/2013	7/31/2013	0%			49%			31%	
SCR770	Revision to Outage Scheduling Entry for Resource Maintenance Outage Level Designation	Execution	3/14/2013	11/6/2013	11/6/2013	0%			35%			36%	

ERCOT Portfolio Stoplight Report (as of 4/10/2013)

Project Number	Project Name	Phase	Forecast Start Date					Sum of 2013 Budgets	2013 Forecast Spend	2013 Variance	Sum of Total Budgets	Total Forecast Spend	Total Variance
PROJECTS NOT YET STARTED (Count = 32)				Sorted by Rank				\$ 3,864,525	\$ 3,229,392		\$ 8,445,595	\$ 7,810,462	
TBD	MP Online Data Entry - Ph 1	Not Started	Apr 2013										
TBD	NAS Data Storage / File Synchronization - EMMS System and Applications	Not Started	Apr 2013										
NPRR240	Proxy Energy Offer Curve	Not Started	Apr 2013										
NPRR207	Unit Deselection	Not Started	Apr 2013										
TBD	Email Redundancy	Not Started	Apr 2013										
TBD	Emergency Notification System Hardware Refresh	Not Started	Apr 2013										
NPRR407	Credit Monitoring Posting Requirements - CRR Portion	Not Started	May 2013										
SCR756	MarkeTrak Enhancements - Remaining SCR756 Items	Not Started	Jun 2013										
TBD	IBM AIX Operating System Upgrades	Not Started	Jun 2013										
TBD	Mobile Device Management	Not Started	Jun 2013										
TBD	Net Backup Architecture Redesign	Not Started	Jun 2013										
TBD	Quality Center Upgrade	Not Started	Jun 2013										
NPRR210	Wind Forecasting Change to P50, Sync with PRR841	Not Started	Jul 2013										
NPRR419	Revise Real Time Energy Imbalance and RMR Adjustment Charge	Not Started	Jul 2013										
TBD	Dev Hardware Refresh and Virtualization Expansion	Not Started	Jul 2013										
TBD	SQL Server 2012 Upgrade / Cluster Consolidation	Not Started	Jul 2013										
TBD	Symposium Call Center Replacement	Not Started	Jul 2013										
TBD	Red Hat Jboss Operations Network	Not Started	Aug 2013										
TBD	Taylor Control Room Upgrade	Not Started	Aug 2013										
TBD	Windows 2003 Retirement - Phase 1	Not Started	Aug 2013										
NOGRR084	Daily Grid Operations Summary Report	Not Started	Sep 2013										
SCR771	ERCOT System Change Allowing Independent Master QSE to Represent Split Generation Resources	Not Started	Sep 2013										
TBD	Intrusion Prevention System	Not Started	Sep 2013										
NPRR256	Sync with PRR787, Add Non-Compliance Language to QSE Performance Standards	Not Started	Oct 2013										
TBD	Voice Over IP (VOIP) Replacement for PBX	Not Started	Oct 2013										
SCR769	CRRRAH Digital Certificate New Role for Read Only Access	Not Started	Nov 2013										
NPRR492	Addition of System Lambda Information	Not Started	TBD										
NPRR493	Half-Hour RUC Clawback	Not Started	TBD										
NPRR495	Changes to Ancillary Services Capacity Monitor	Not Started	TBD										
NOGRR101	Market Notice for DC-TIE Outage Information	Not Started	TBD										
NOGRR105	Generation Resource Frequency Response Test Procedure	Not Started	TBD										
SCR773	Addition of Regulation Feedback to Generation to be Dispatched Calculation	Not Started	TBD										

ERCOT Portfolio Stoplight Report (as of 4/10/2013)

Project Number	Project Name	Phase	Baseline Execution Phase Start	Baseline Go-Live Target	Actual Go-Live Date	Schedule Status	Sum of 2013 Budgets	2013 Forecast Spend	2013 Variance	Sum of Total Budgets	Total Forecast Spend	Total Variance
PROJECTS COMPLETED IN 2013 (Count = 16) Sorted by Project							\$ 173,582	\$ 142,534	17%	\$ 3,803,255	\$ 3,464,706	8%
006-01	SAGE (System Administrator Gateway Environment)	Closing	5/31/2012	12/19/2012	1/3/2013	1 -7%			49%			5%
030-01	ITRON Load Forecast	Closing	6/27/2012	2/15/2013	2/15/2013	0%			5 -37%			-1%
046-01	MAI Conversion to IGRID	Closing	8/2/2012	2/15/2013	2/15/2013	0%			3 -312%			2%
NPRR260	Providing Access to MIS Secure Area to MIS Registered Users	Closing	10/3/2012	2/15/2013	2/15/2013	0%			3 -64%			19%
NPRR377	Alternate Inputs to Base Point Deviation Charge	Closing	9/26/2012	2/15/2013	2/15/2013	0%			74%			28%
NPRR313	Updating the Term Resource Plan to Current Operating Plan / Availability Plan	Complete	8/22/2012	2/15/2013	2/15/2013	0%			43%			30%
NPRR322	Real-Time PTP Option Modeling	Complete	8/1/2012	2/15/2013	2/15/2013	0%			30%			1%
NPRR397	Balance of the Day Ancillary Service Market	Complete	9/19/2012	2/15/2013	2/15/2013	0%			30%			33%
NPRR407	Credit Monitoring Posting Requirements - MMS/CDR Portion	Complete	9/19/2012	2/15/2013	2/15/2013	0%			37%			19%
NPRR469	Modifications to CCTs	Complete	9/19/2012	2/15/2013	2/15/2013	0%			47%			21%
SCR768	Automatic Non-Spin Redeployment and Deployment Based on Resource Availability	Complete	9/19/2012	2/15/2013	2/15/2013	0%			57%			4%
043-01	Met Center Lease Reconfiguration	Complete	9/12/2012	12/19/2012	12/19/2012	0%			87%			10%
009-01	Compliance Software Tool	Complete	12/1/2011	11/30/2012	12/19/2012	1 -5%			2 -100%			20%
020-01	CIM Upgrade for NMMS	Complete	6/14/2012	2/15/2013	2/15/2013	0%			0%			18%
021-01	Incremental Update Capability - Phase 1	Complete	3/23/2012	2/6/2013	2/13/2013	-2%			2 -18%			62%
NPRR347 NPRR400	Implementation of NPRR347 and NPRR400	Complete	3/29/2012	2/15/2013	2/15/2013	0%			55%			3 -12%

SUMMARY

		Sum of 2013 Budgets	2013 Forecast Spend	Sum of Total Budgets	Total Forecast Spend
4%	KPI Budget Measure - Execution/Completed Projects	Projects In Flight \$ 16,592,632	\$ 15,310,973	\$ 35,217,097	\$ 33,711,124
2%	KPI Schedule Measure - Execution/Completed Project	Projects Not Yet Started \$ 3,864,525	TBD	\$ 8,445,595	TBD
		Projects Completed \$ 173,582	\$ 142,534	\$ 3,803,255	\$ 3,464,706
		TOTAL \$ 20,630,739	\$ 15,453,507	\$ 47,465,947	\$ 37,175,830

Project Funding \$ 15,000,000

Stoplight Calculation Definitions

Schedule: Count of Execution and Completed Projects with Variance >= 10%
/ Count of Execution and Completed Projects

Budget: (Total Budget of Execution and Completed Projects
- Total Forecast Spend of Execution and Completed Projects)
/ Total Budget of Execution and Completed Projects

Footnotes

- 1 Current phase took longer than expected, resulting in additional funding and/or time required
- 2 Labor hours planned for 2012 occurred in 2013
- 3 Current phase requiring more labor than expected, resulting in additional funding and/or time required
- 4 Project temporarily placed on hold
- 5 Delay in vendor payment shifted cost from 2012 to 2013
- 6 Current demand exceeds budget
- 7
- 8
- 9