



ERCOT Monthly Operational Overview (December 2012)

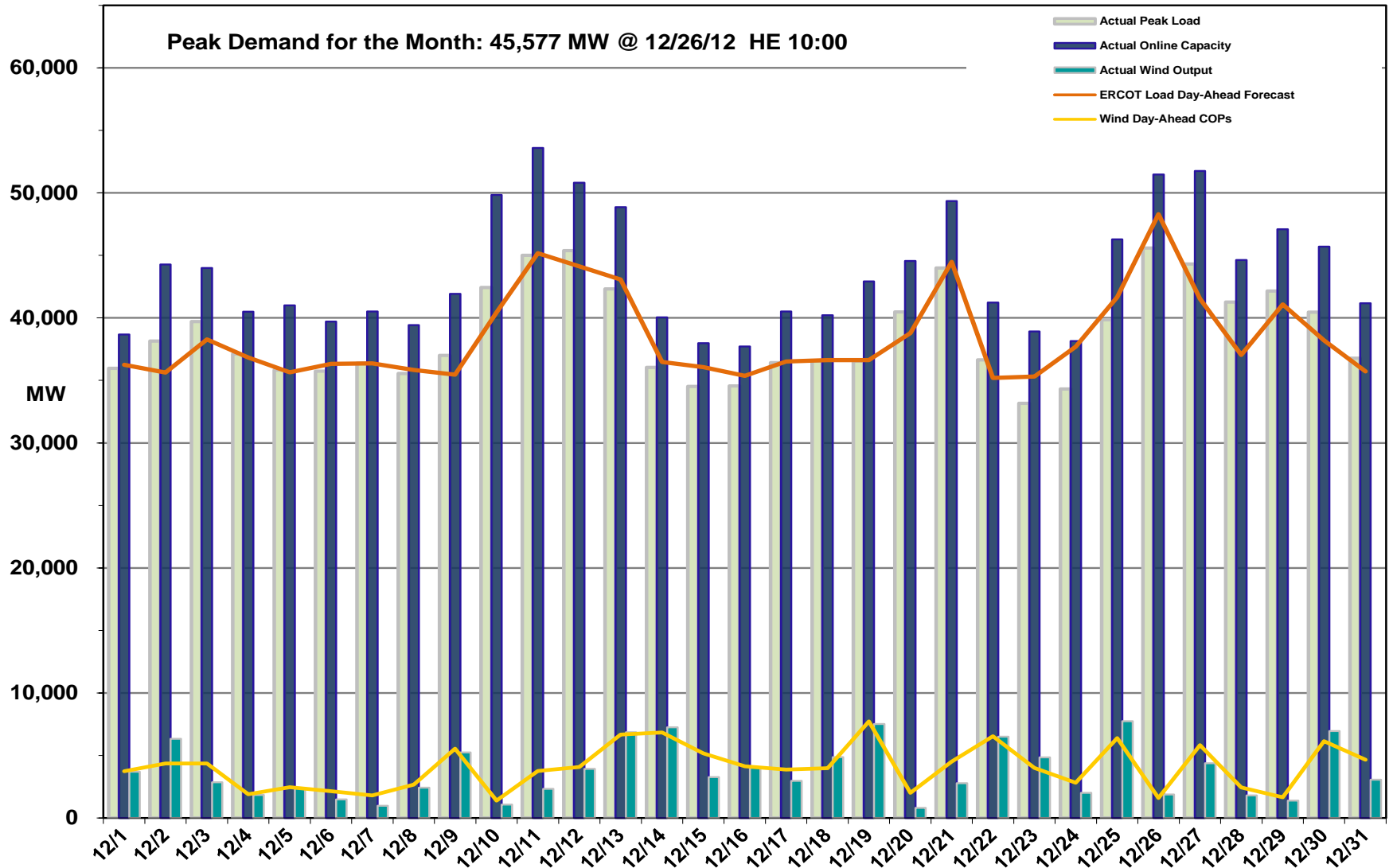
January 15, 2013



Grid Operations & Planning

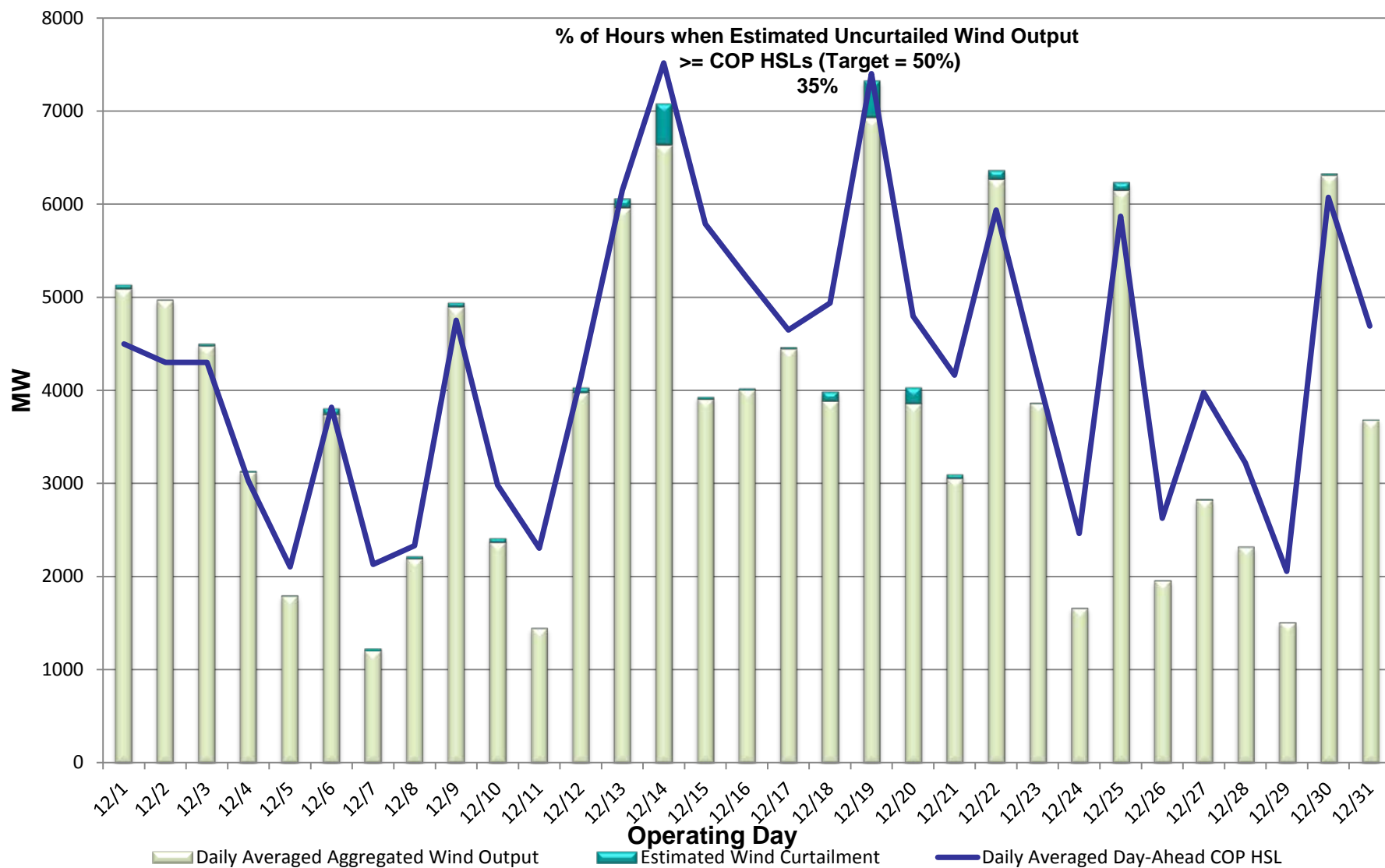
- December 2012 Operations
 - Peak Demand: Actual vs. Forecast
 - On-line Resources: Total at Peak and Wind
 - CPS1 Monthly Performance
 - Historical Peak and Minimum Loads
 - Day-Ahead Load Forecast Performance
 - Reliability Unit Commitment Capacity (RUC) by weather zone
 - Generic Transmission Limits (GTLs)
 - Advisories, Watches and EEAs
 - Significant System Incidents
- Planning Activities
 - Summary
 - Generation Interconnection Requests
 - Wind Capacity

December 2012 Daily Peak Demand: Hourly Average Actual vs. Forecast, Wind Day-Ahead COPs & On-line Capacity at Peak



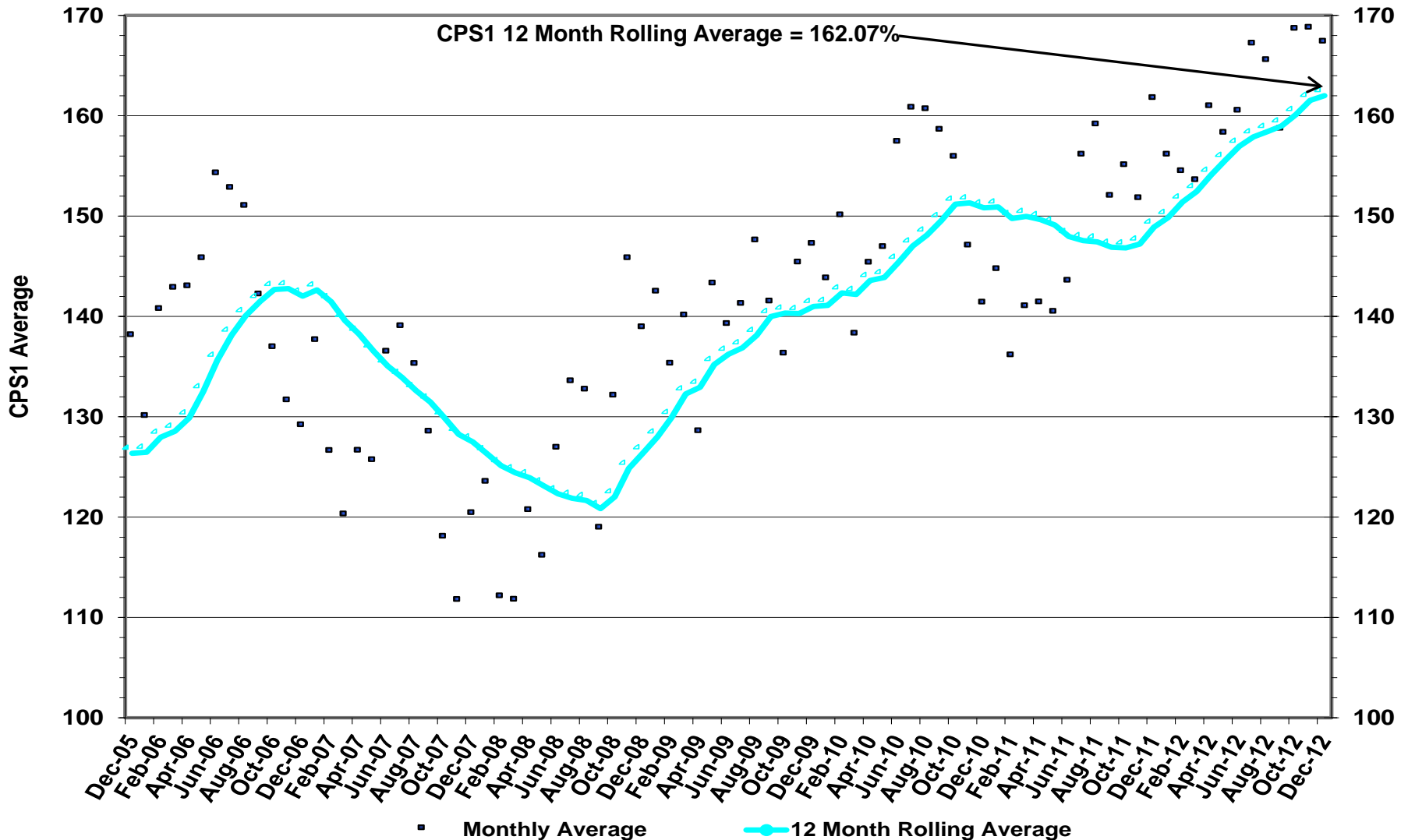
Note: All data are hourly averages during the peak load hour obtained from COPs, and EMMS.

December 2012 Actual Wind Output plus Curtailments vs. Wind Day-Ahead COPs for All Hours

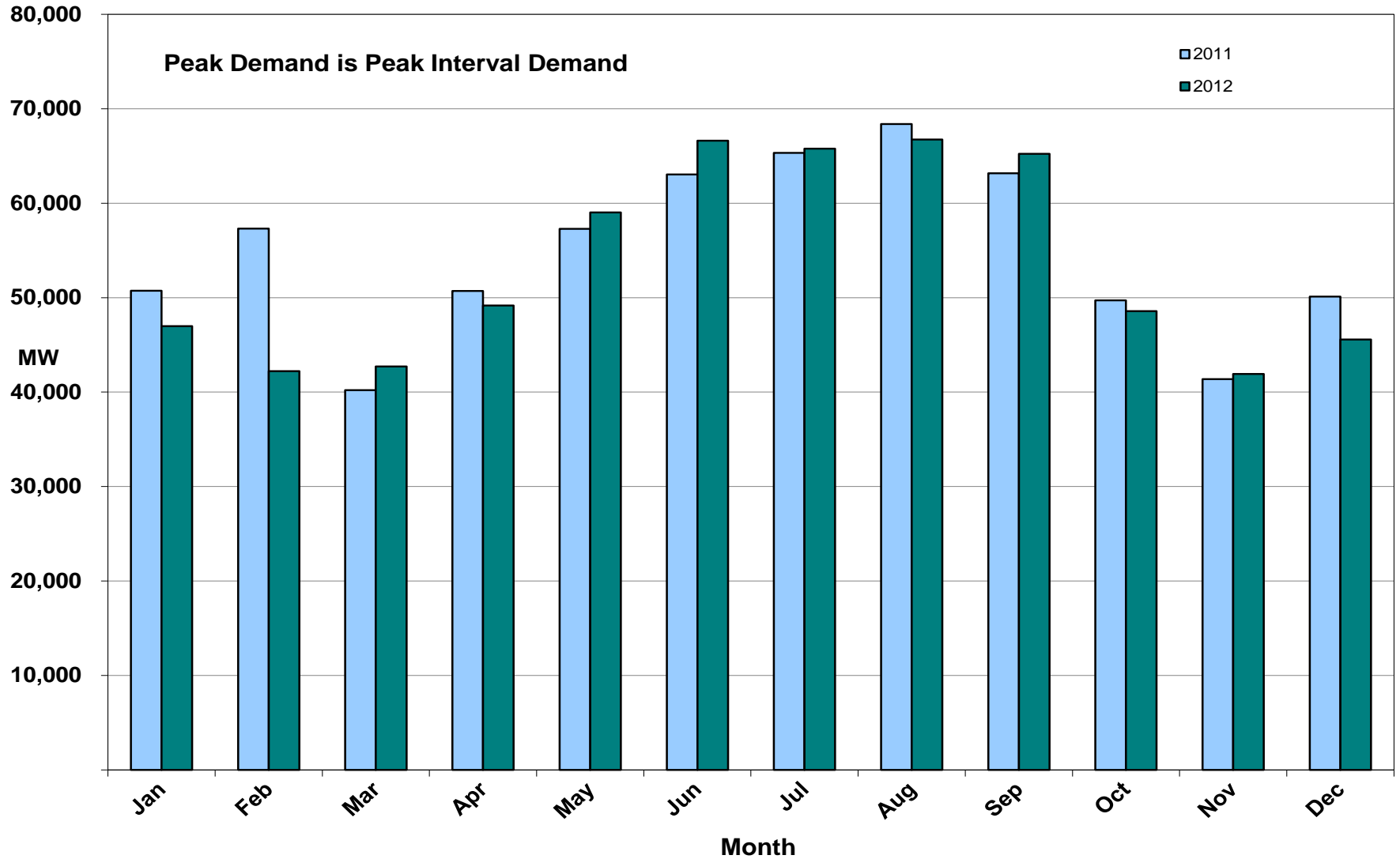


Note: QSEs must use the AWST 50% probability of exceedance forecast as the HSL in their COPs

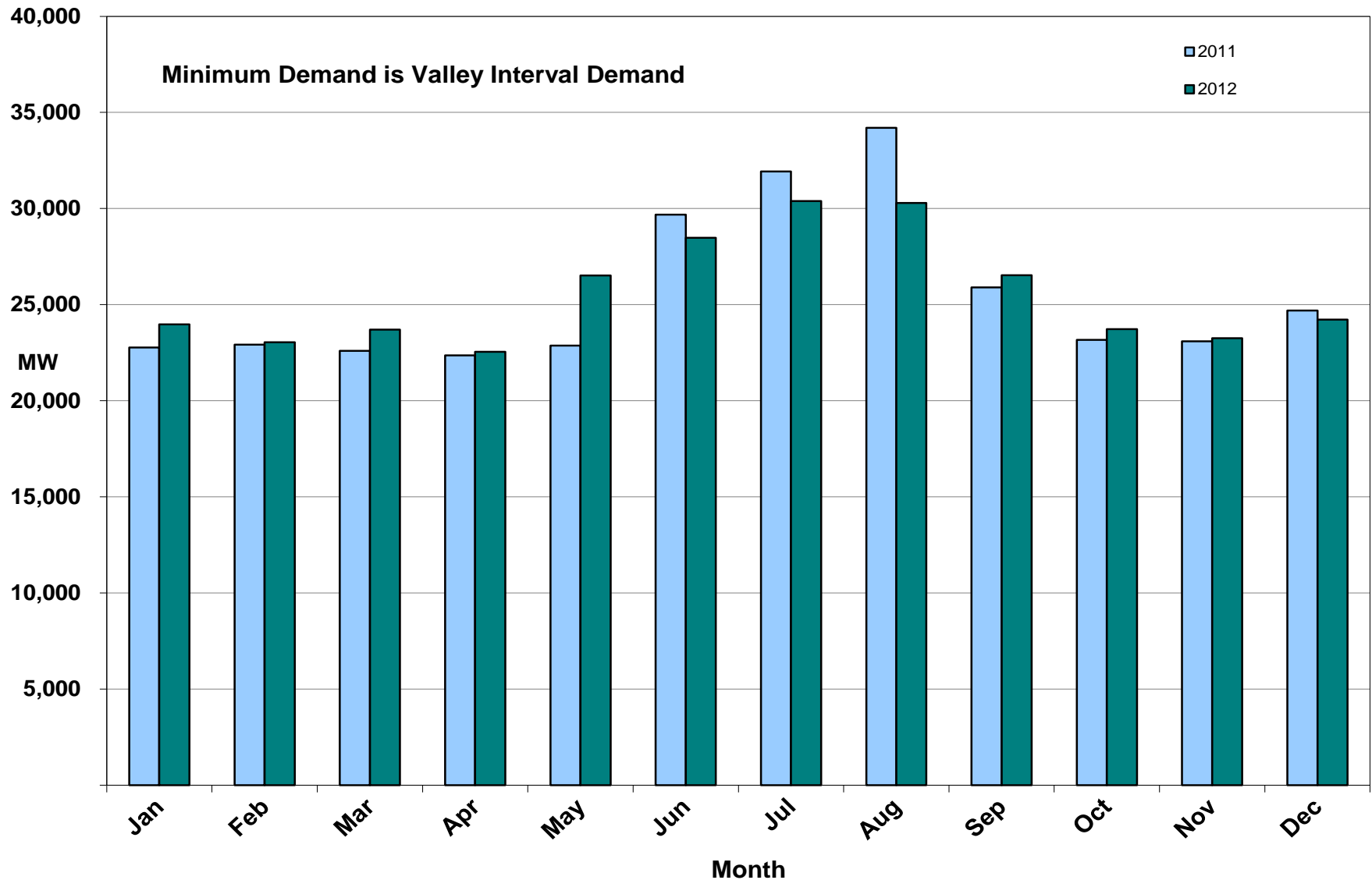
December 2012 ERCOT's CPS1 Monthly Performance



December 2012 Monthly Peak Actual Demand



December 2012 Monthly Minimum Actual Demand



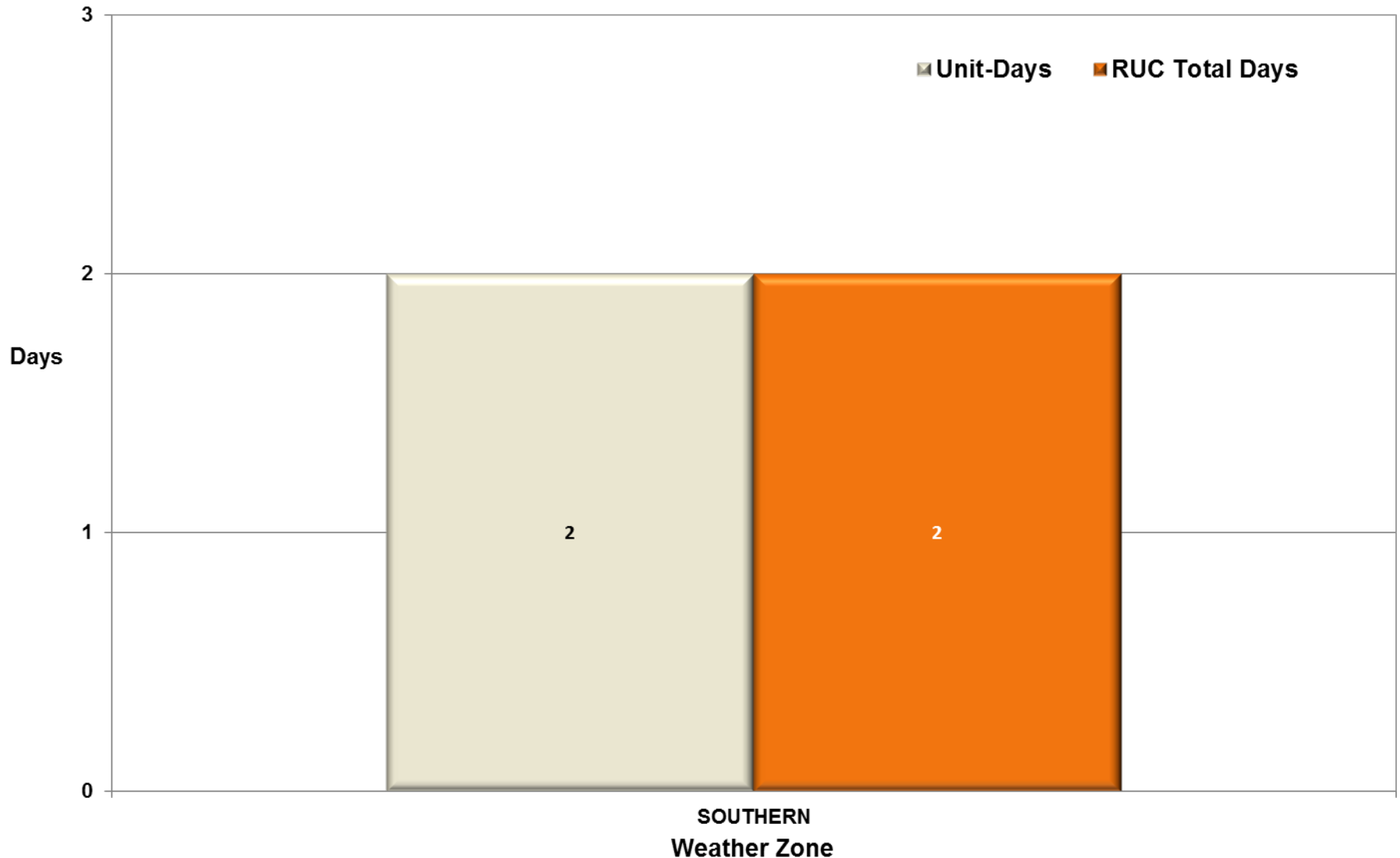
Day-Ahead Load Forecast Performance in December 2012

**Mean Absolute Percent Error (MAPE) for ERCOT Mid-Term Load Forecast (MTLF)
Run at 14:00 Day Ahead**

	2009 MAPE	2010 MAPE	2011 MAPE	2012 MAPE	Dec 2012 MAPE	
Average Annual MAPE	3.11	2.83	2.83	3.02	3.47	
Lowest Monthly MAPE	1.93	2.24	1.63	2.51	Lowest Daily MAPE	0.96 Dec - 07
Highest Monthly MAPE	4.11	3.79	3.55	3.49	Highest Daily MAPE	11.51 Dec - 27

Reliability Unit Commitment (RUC) Capacity by weather zone in December 2012

RUC Commitments by Weather Zone



December 2012 Generic Transmission Limits (GTLs)

GTLs	Dec 11 Days GTLs	Oct 12 Days GTLs	Nov 12 Days GTLs	Dec 12 Days GTLs	Last 12 Months Total Days (Dec11 – Dec12)
North – Houston	0	0	0	0	1
West – North	18	14	7	19 Dec (1,2,6,9,10,12-14,16- 22,25,27,29,30)	175
Valley Import	0	0	0	0	0

GTL: A transmission flow limit more constraining than a Transmission Element's normal limit established to constrain flow between geographic areas of the ERCOT Transmission System that is used to enforce stability and voltage constraints that cannot be modeled directly in ERCOT's transmission security analysis applications.

Note: This table lists how many times a constraint has been activated to avoid exceeding a GTL limit, it does not imply an exceedance of the GTL occurred.

Advisories and Watches in December 2012

- **Advisories issued for Physical Responsive Capability (PRC) below 3000 MW.**
 - None
- **Watches issued for Physical Responsive Capability (PRC) below 2500 MW.**
 - None
- **Transmission Watches**
 - 12/4 14:34 ERCOT issued a transmission watch for Rio Grande Valley area due to transmission and generation outages in the area
- **Emergency Notice**
 - None
- **Energy Emergency Alerts**
 - None

Lake Levels Update – 01 January 2013

Surface Water & (MW)	*Level @ Full Conservation Pool	*Level on Jan 1, 2011	*Level on Oct 7, 2011	*Level on Jan 1, 2013
Lake Texana (56)	44.50	41.00	32.81	41.14
Bardwell Lake (312)	421.00	420.71	416.23	417.37
Lake Colorado City (407)	2,070.20	2057.33	2052.4	2053.33
Lake Ray Hubbard (916)	435.50	432.37	429.22	431.41
Lake Granbury (983)	693.00	691.90	686.27	687.28
Lake Houston (1016)	41.73	42.10	36.76	41.30
Twin Oaks Reservoir (1616)	400	398.87	398.27	400.12
Lake Limestone (1689)	363	359.03	354	357.83
Martin Lake (2425)	306	300.48	295.06	301.45

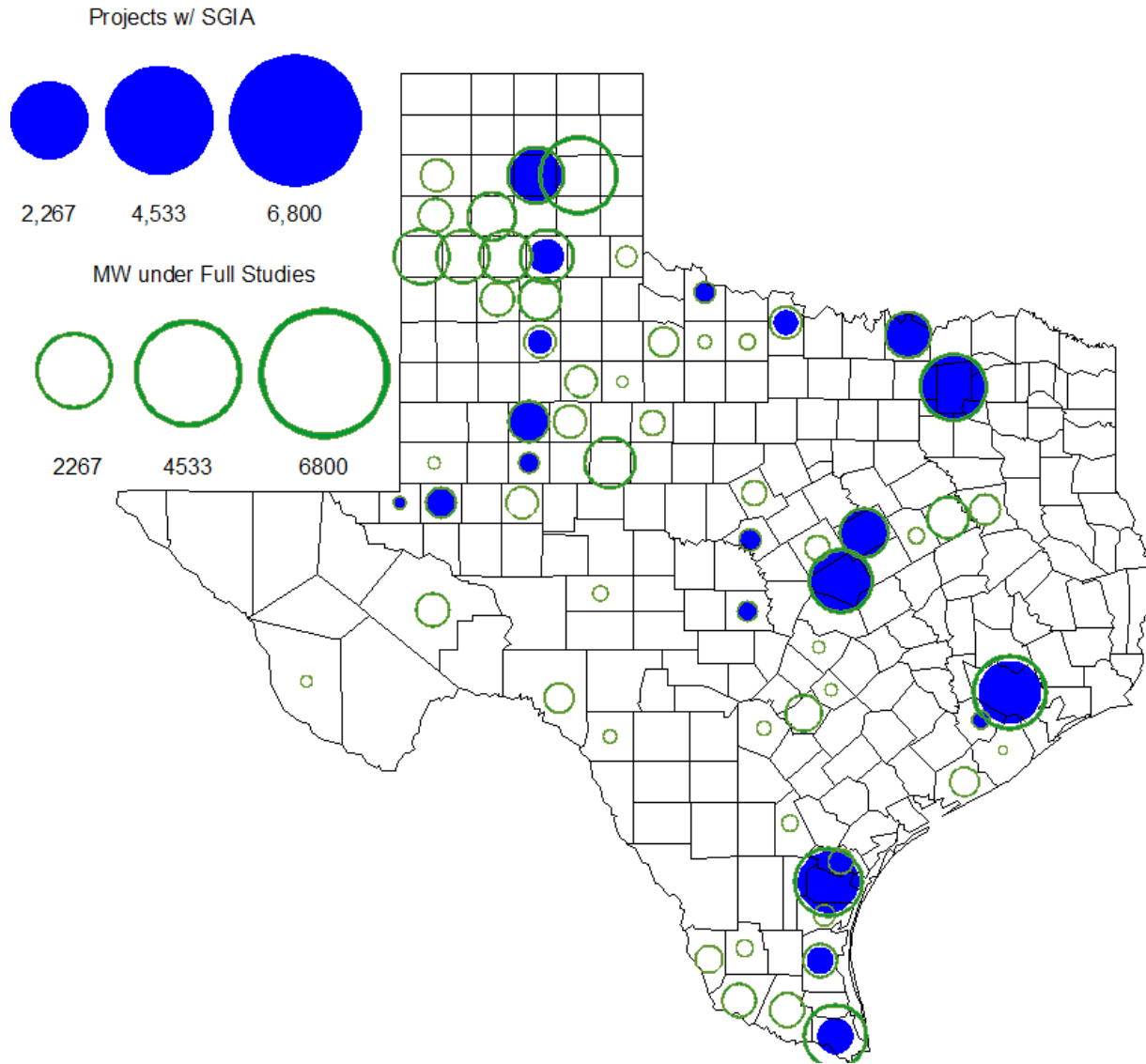
* In Feet above Mean Sea Level

Planning Summary

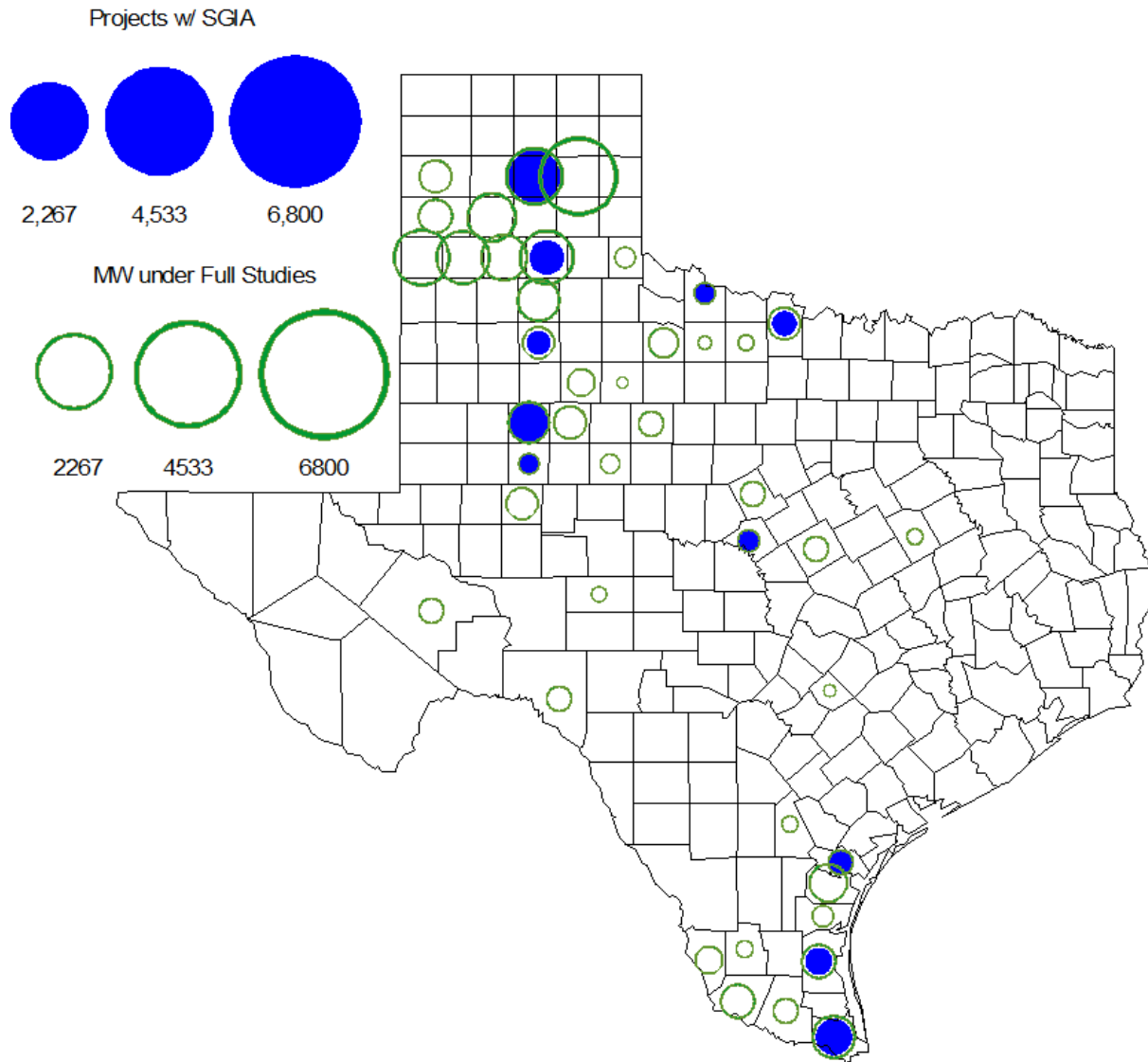
- **ERCOT is currently tracking 152 active generation interconnection requests totaling over 46,000 MW. This includes over 20,000 MW of wind generation.**
- **ERCOT is currently reviewing proposed transmission improvements with a total cost of \$226.1 Million**
- **Transmission Projects endorsed in 2012 total \$596.8 Million**
- **All projects (in engineering, routing, licensing and construction) total approximately \$9.68 Billion.**
- **Transmission Projects energized in 2012 total about \$732.2 million.**

|

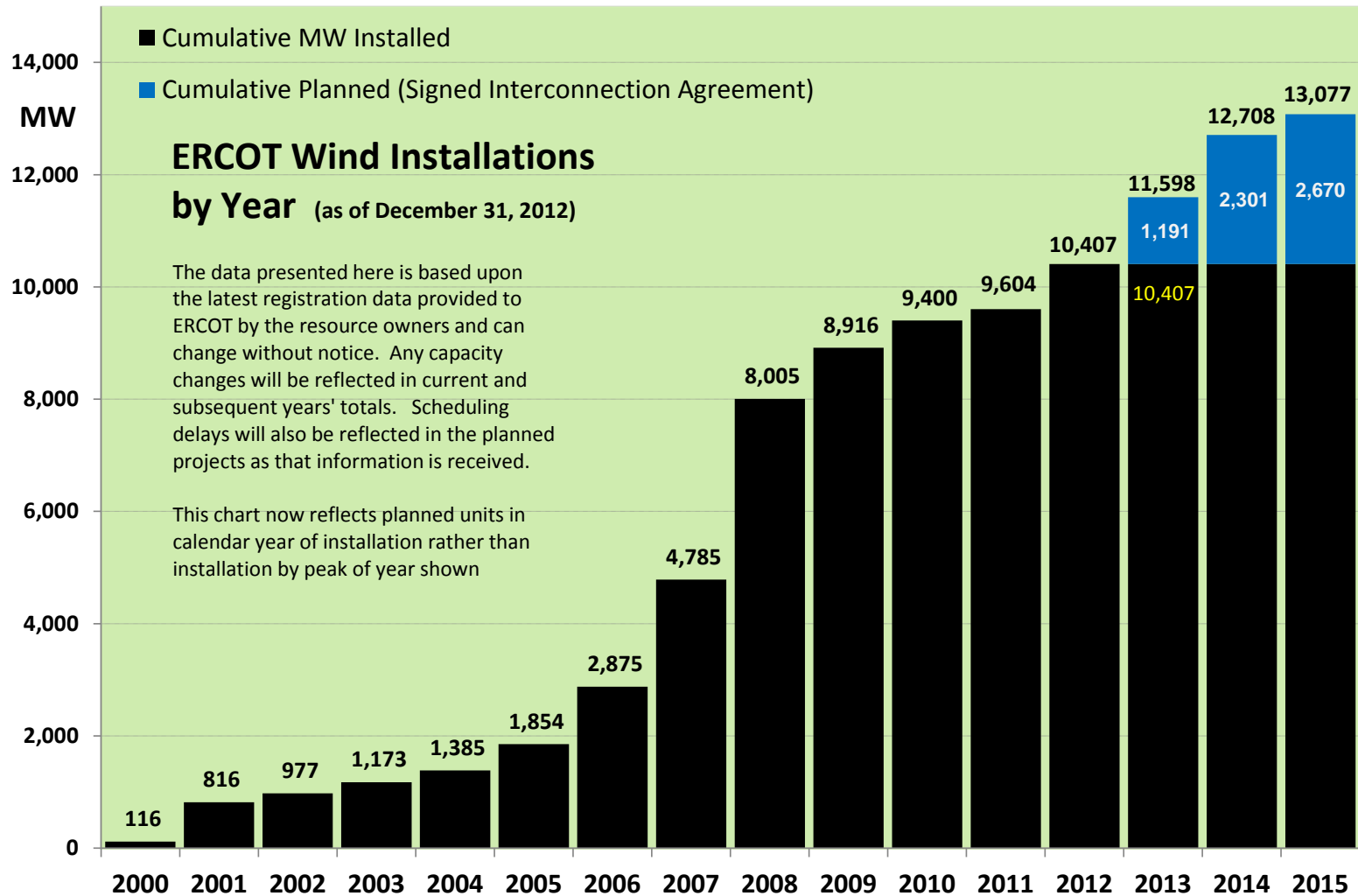
County Location of Planned Generation with Interconnection Requests (all fuels) **December 2012**



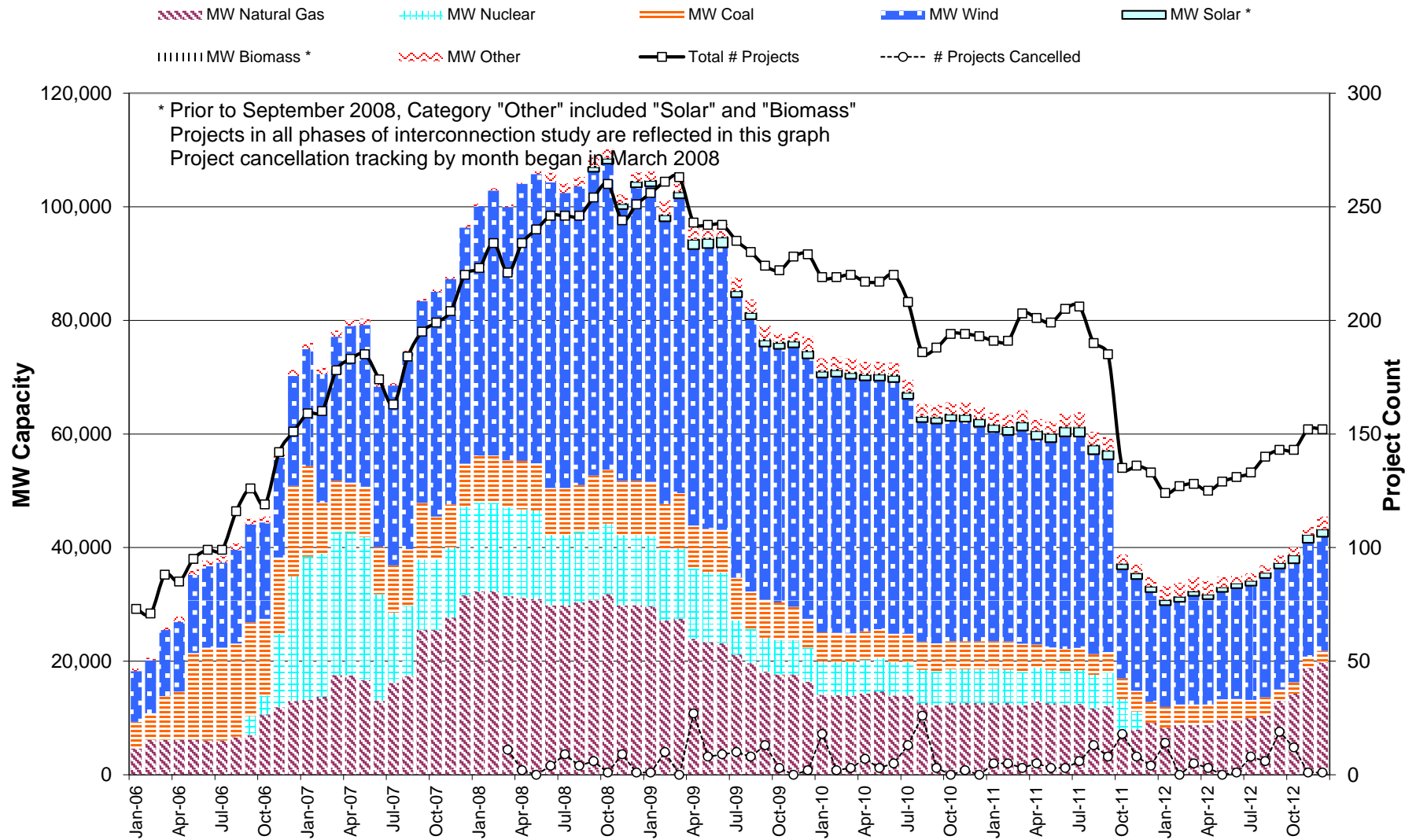
County Location of Planned Generation with Interconnection Requests (Wind) **December 2012**



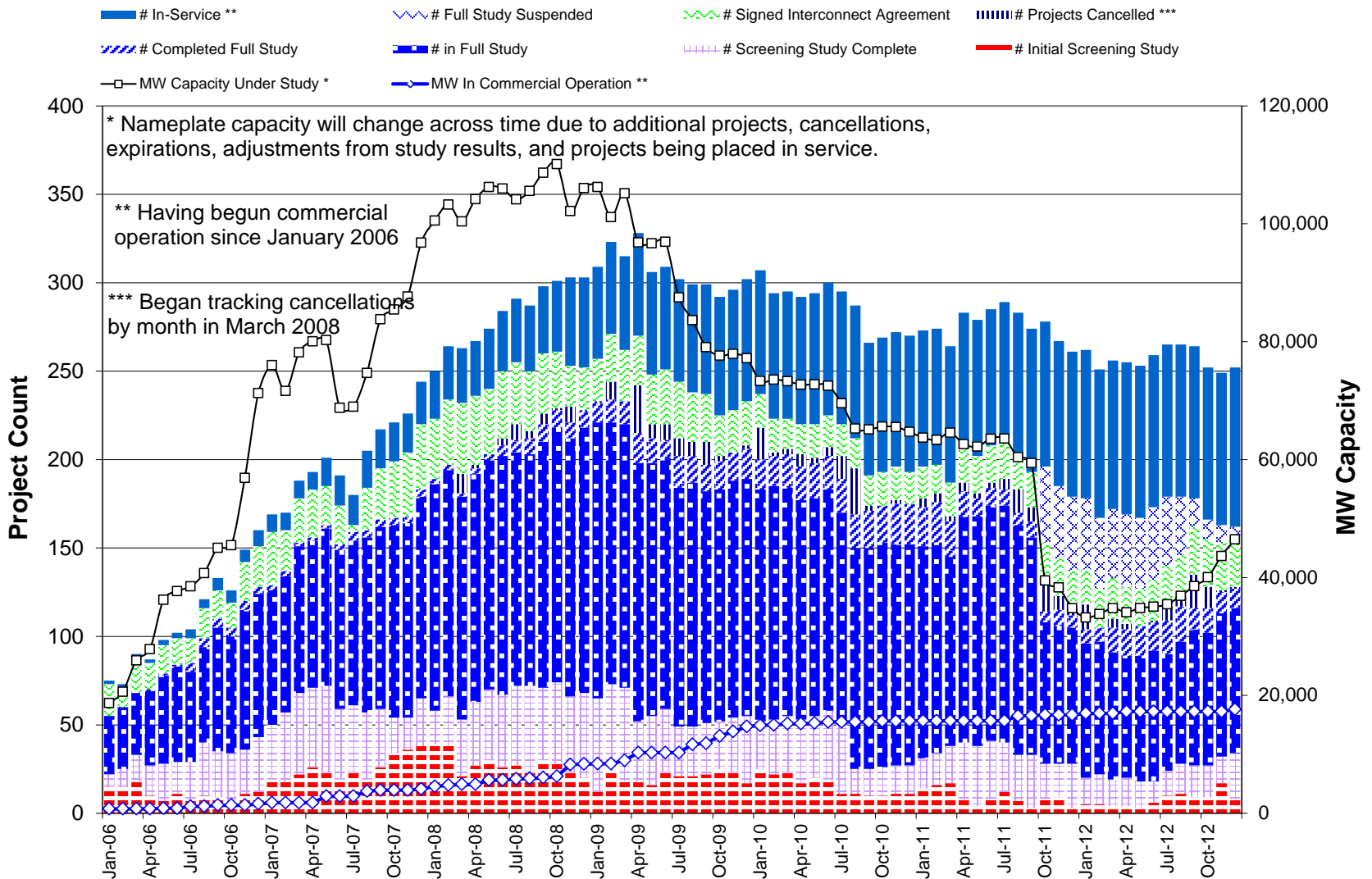
Wind Generation – December 2012



Generation Interconnection Activity by Fuel – December 2012



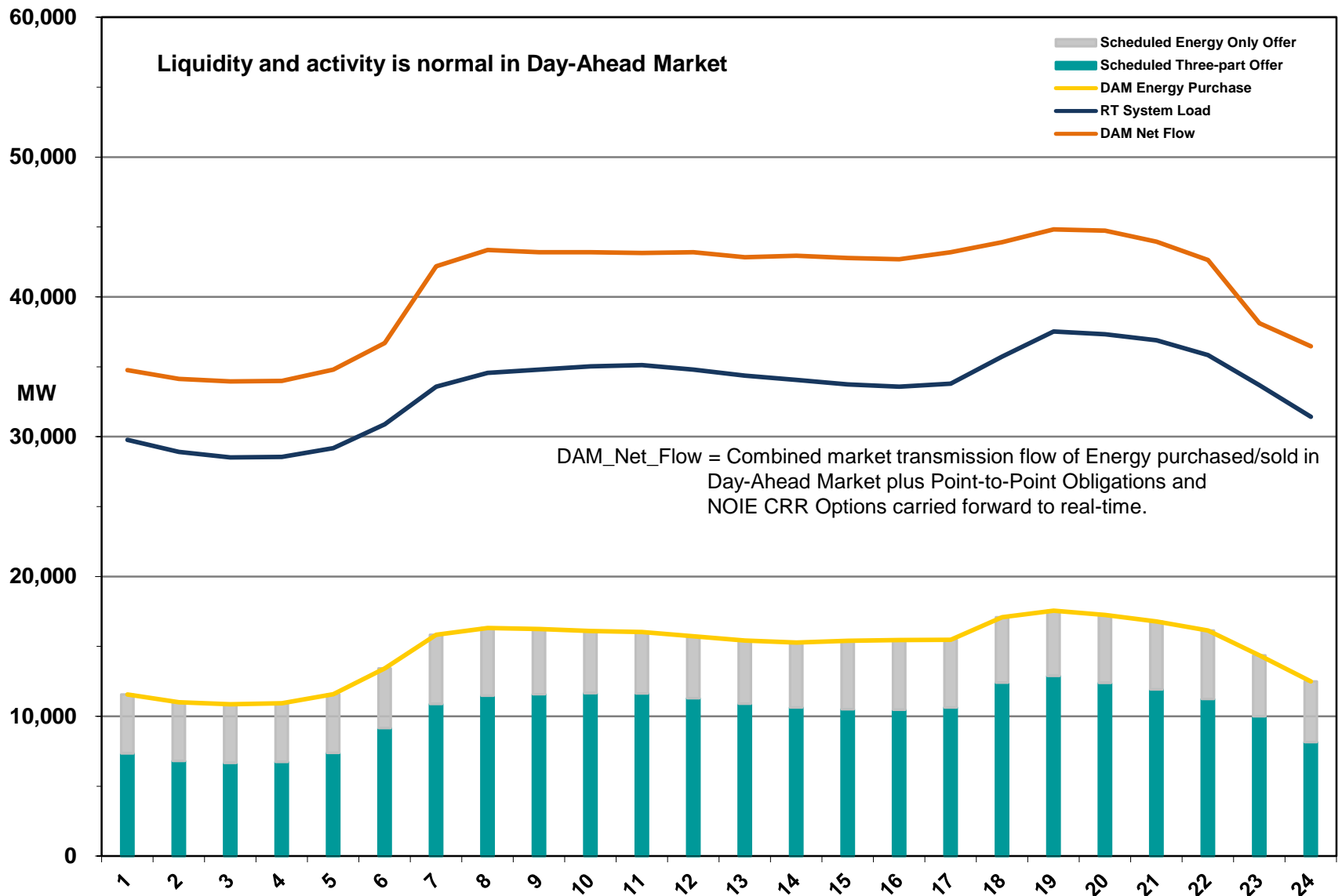
Generation Interconnection Activity by Project Phase – December 2012



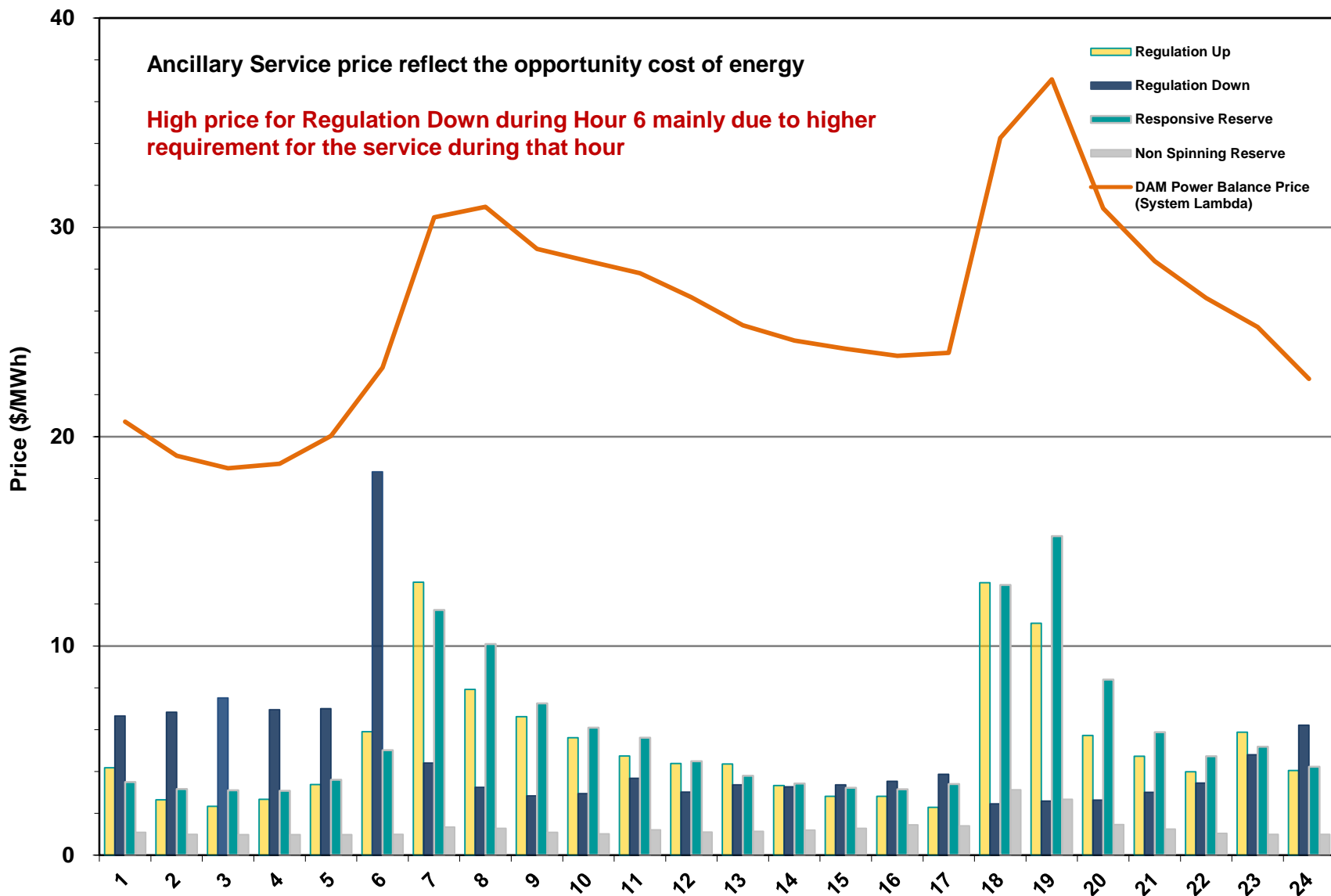


Market Operations

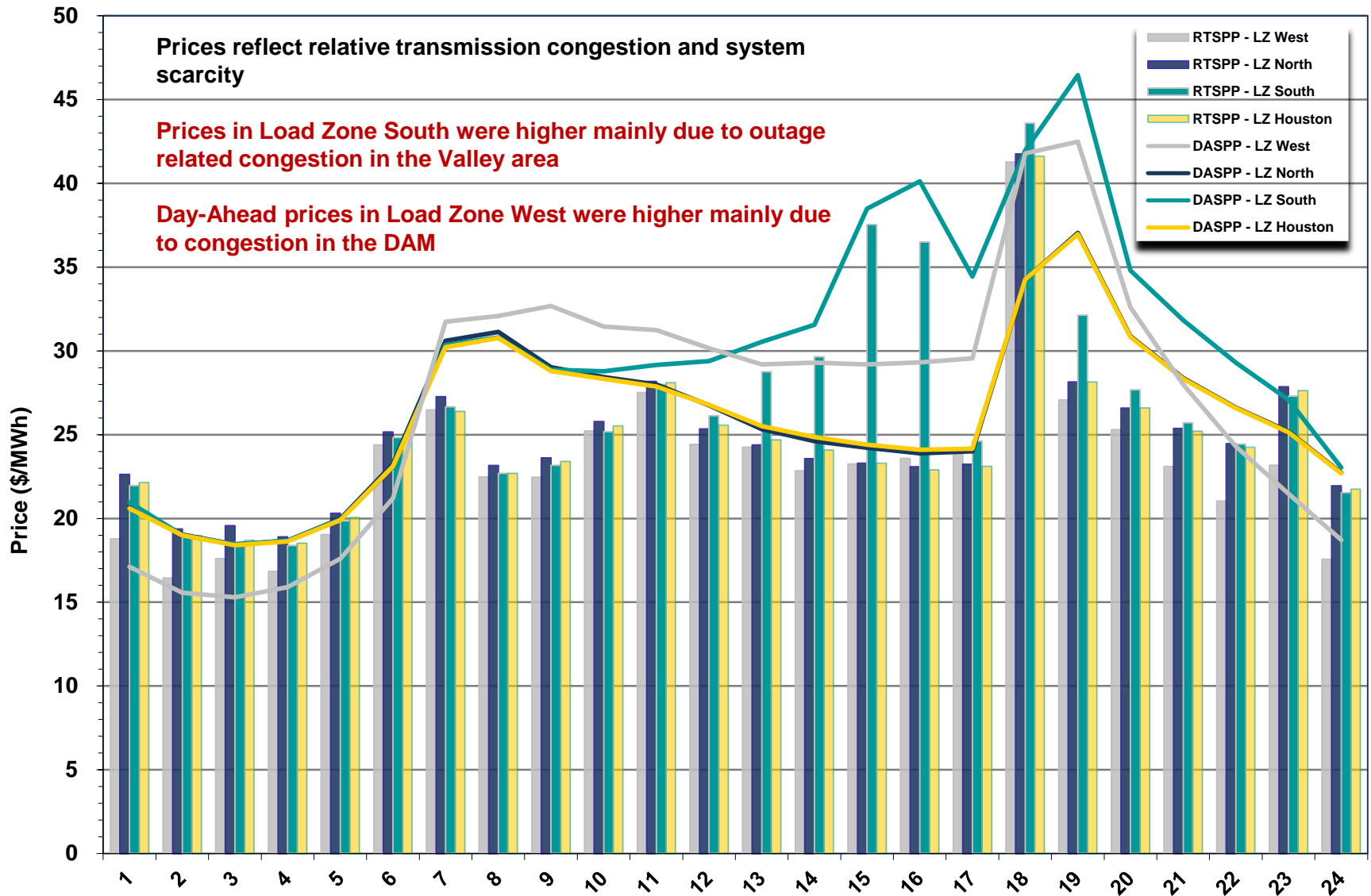
Day-Ahead Schedule – December 2012



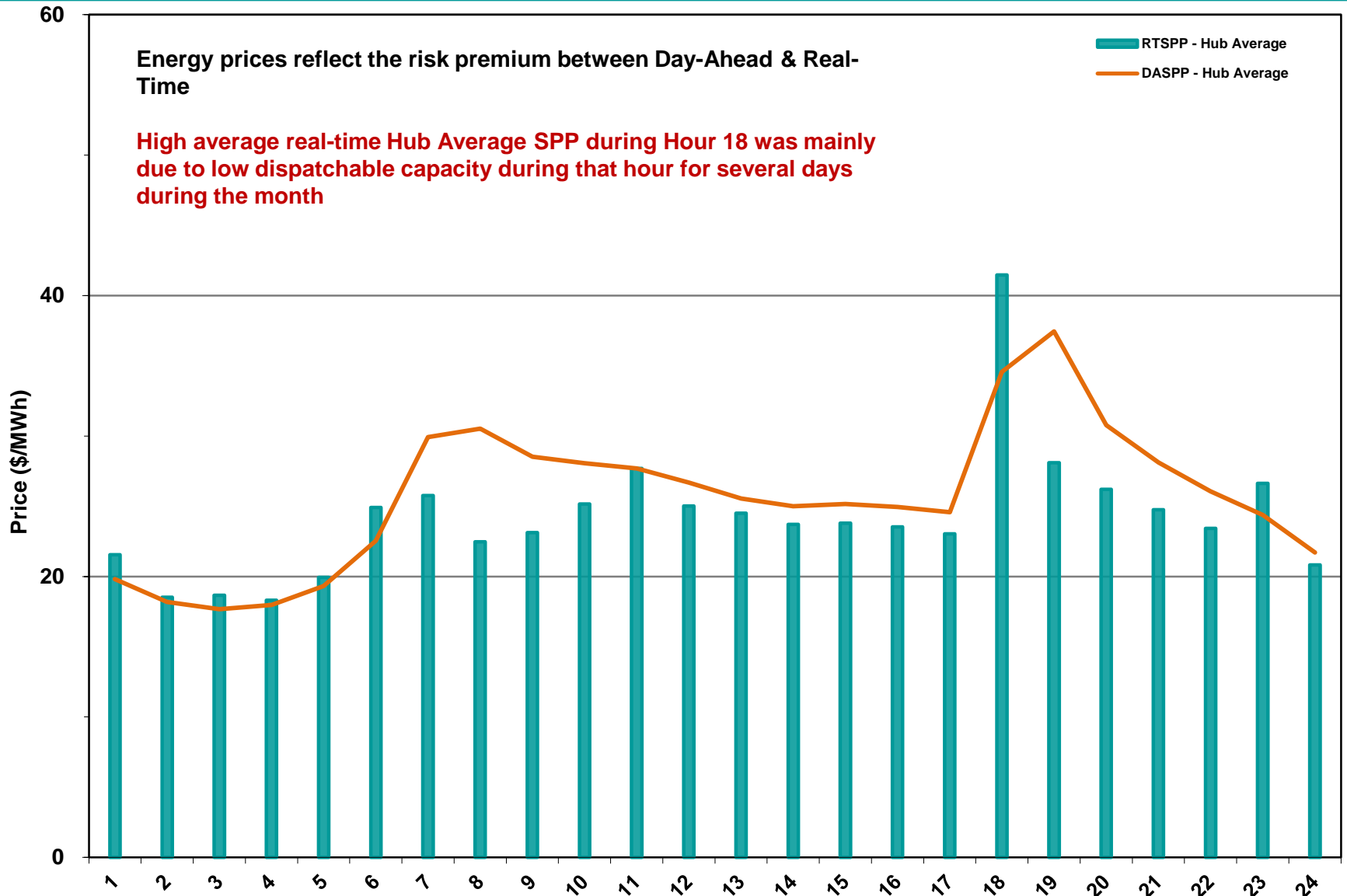
Day-Ahead Electricity And Ancillary Service Hourly Average Prices – December 2012



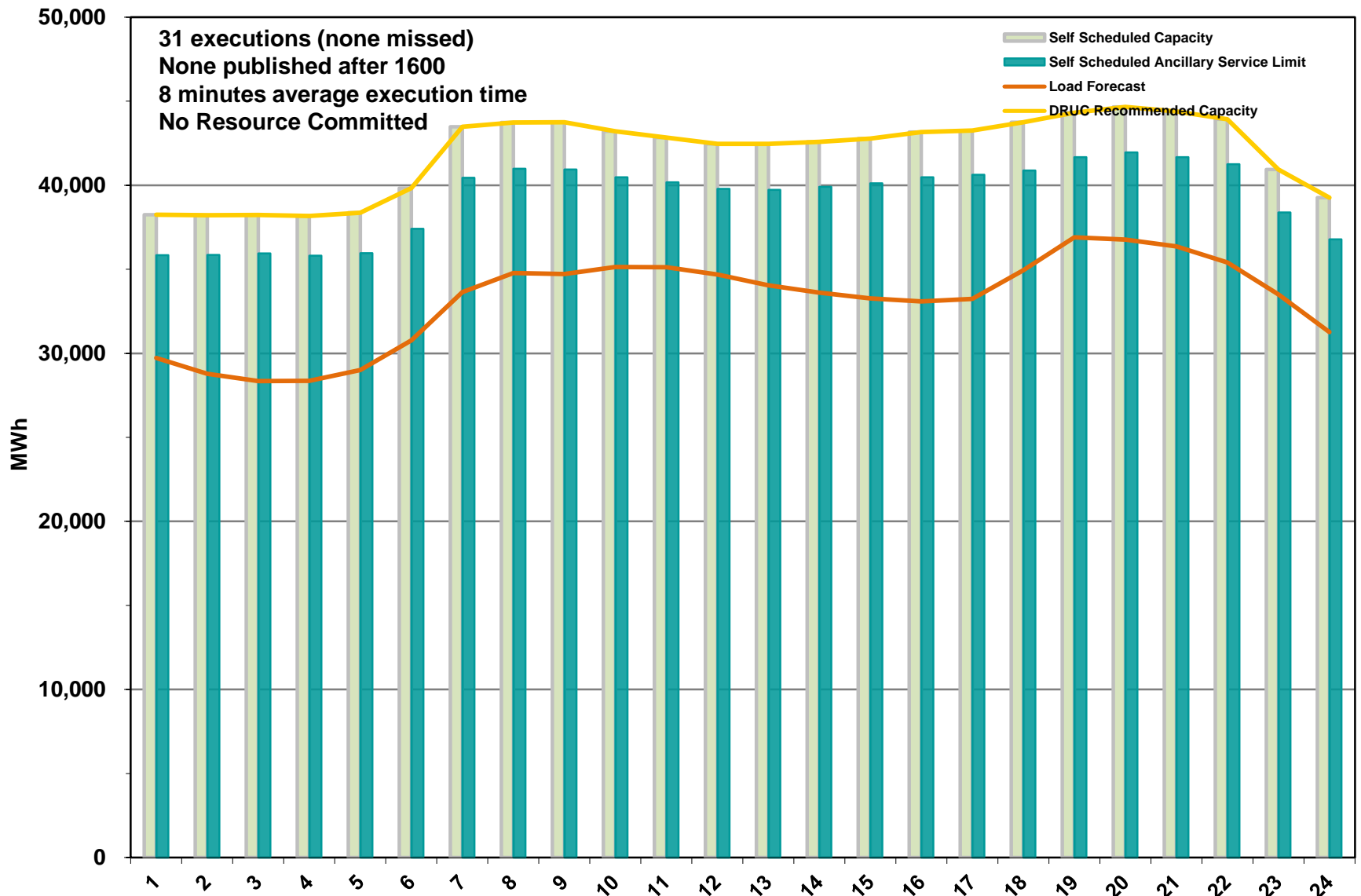
Day-Ahead Vs Real-Time Load Zone SPP (Hourly Average) - December 2012



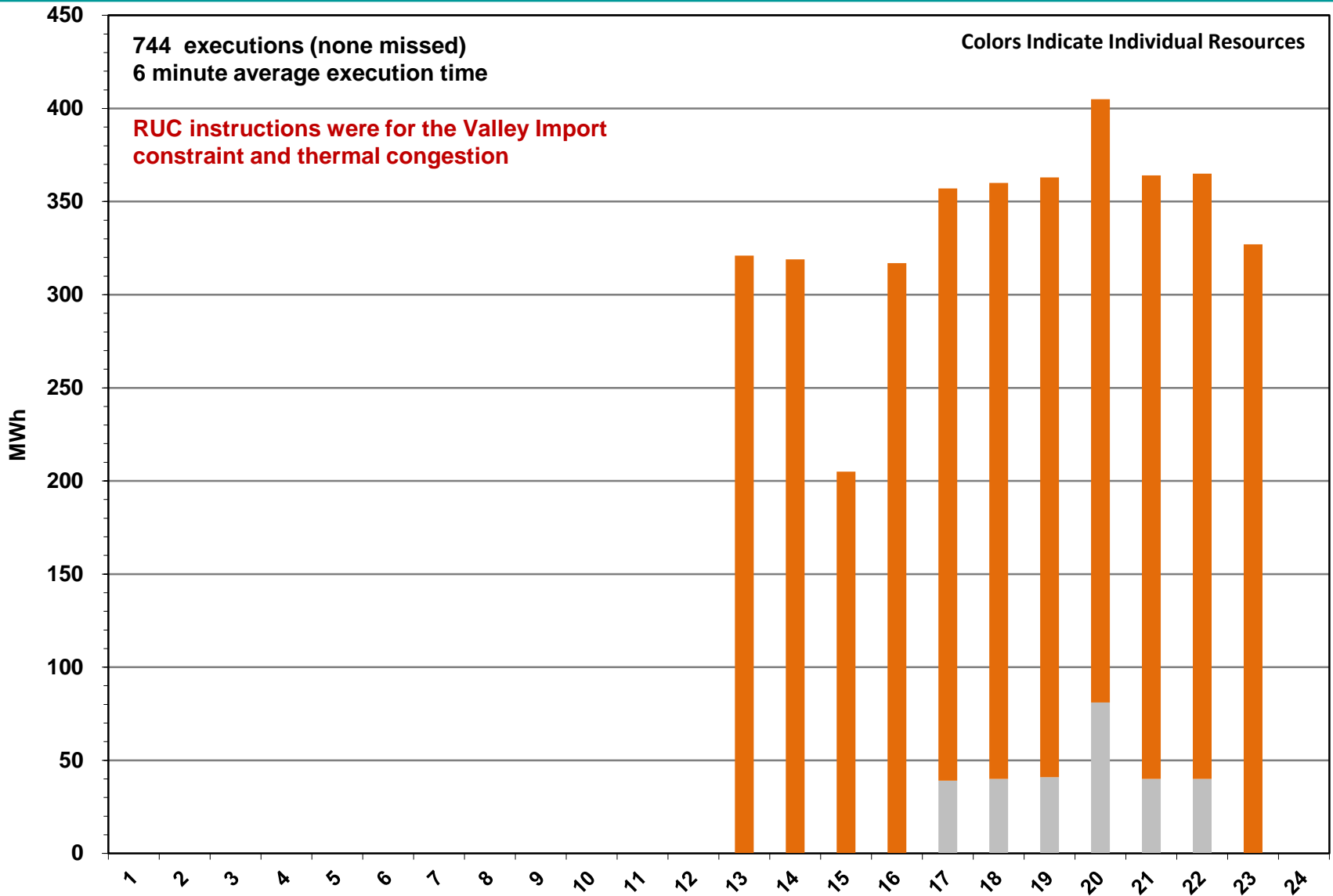
Day-Ahead Vs Real-Time Hub Average SPP (Hourly Average) - December 2012



DRUC Monthly Summary – December 2012



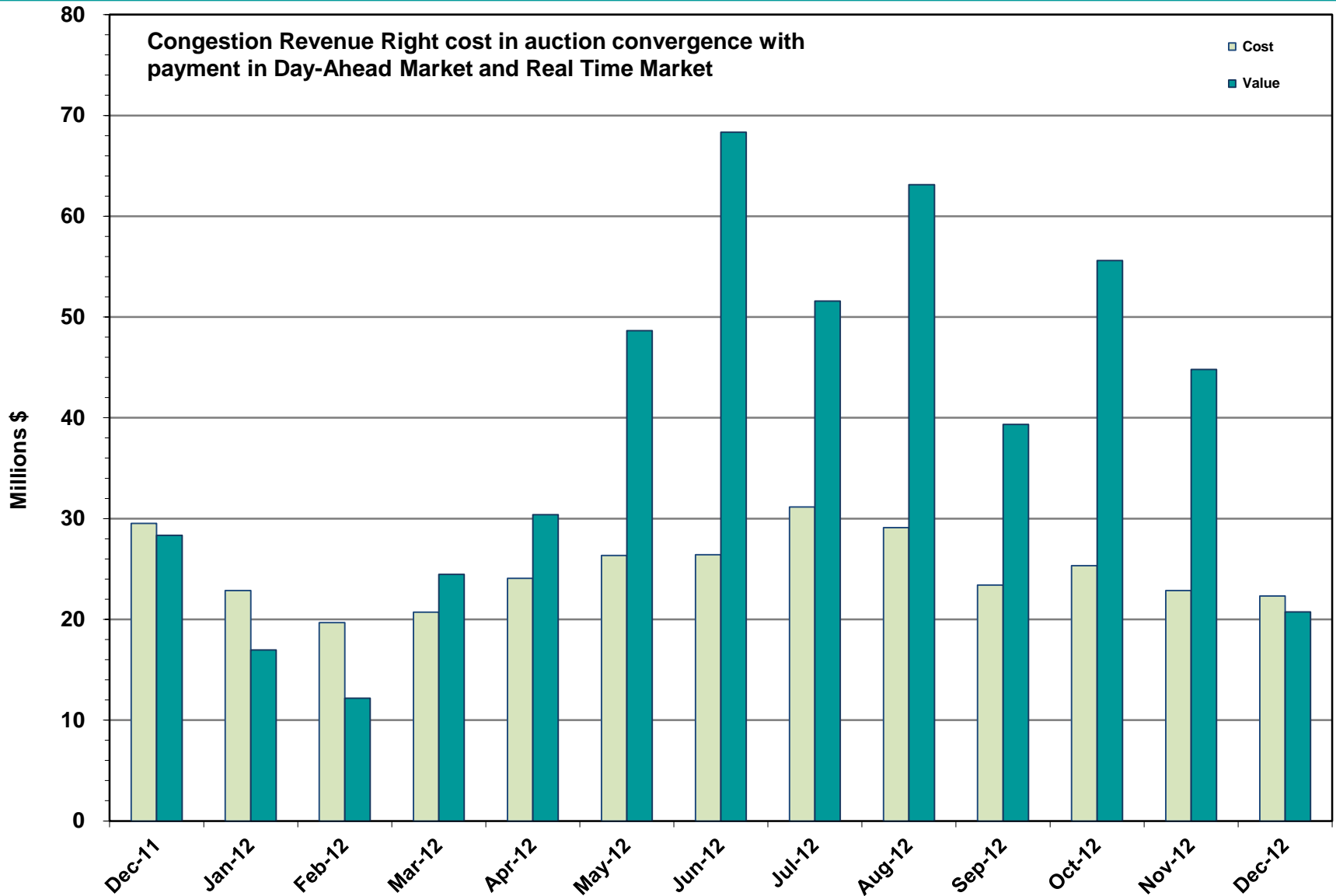
HRUC Monthly Summary – December 2012



Non-Spinning Reserve Service Deployment – December 2012

Deployment Start Time	Deployment End Time	Deployment Duration (Hours)	Max Deployment (MW)	Reason
12/4/12 2:51 PM	12/4/12 5:59 PM	3.1	186	Congestion

CRR Price Convergence – December 2012



ERS Procurement for October 2012 – January 2013

10-Minute ERS

	BH1	BH2	BH3	NBH
MW Procured	450.06	447.56	434.31	402.38
Average Price Per MW per Hour ¹	\$8.22	\$8.77	\$9.06	\$8.15

Note: Four ERS Generators procured with an average of 11.12 MW

30-Minute ERS Pilot

MW Procured	80.28	82.33	82.00	71.15
Clearing Price ²	\$8.10	\$9.20	\$9.50	\$8.20

Note: One Residential Aggregation with 347 sites procured

BH1 - Business Hours 1 HE 0900 through 1300, Monday thru Friday except ERCOT Holidays
 BH2 - Business Hours 2 HE 1400 through 1600, Monday thru Friday except ERCOT Holidays
 BH3 - Business Hours 3 HE 1700 through 2000, Monday thru Friday except ERCOT Holidays
 NBH - Non-Business Hours All other hours

¹ Procured on a Pay-As-Offer basis

² Procured using a Clearing Price Mechanism

Reliability Services – December 2012

Reliability Unit Commitment (RUC) \$ in Millions

RUC Make-Whole Payments (\$0.01)

RUC Clawback Charges \$0.01

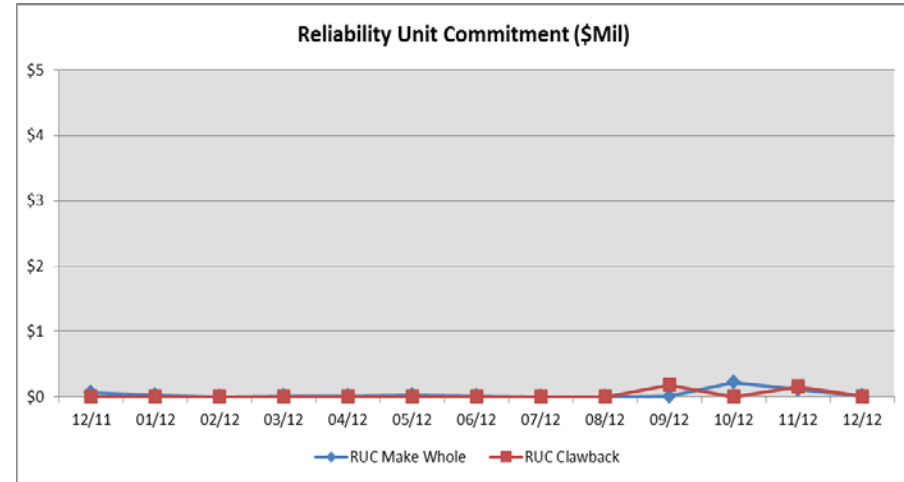
RUC Commitment Settlement \$0.00

RUC Capacity Short Charges \$0.01

RUC Make-Whole Uplift \$0.00

RUC Commitment Cost Allocation \$0.01

RUC Decommitment Payments \$0.00



RUC Cost continues to trend low.

December 2012 was even at \$0.00M, compared to:

- A payment of \$0.04M in November 2012
- A charge of \$0.06M in December 2011

Ancillary Services – December 2012

Capacity Services	\$ in Millions
Regulation Up Service	\$1.89
Regulation Down Service	\$1.52
Responsive Reserve Service	\$10.0
Non-Spinning Reserve Service	\$1.33
Black Start Service	\$0.58
Voltage Services - Reactive Power	\$0.0
Voltage Services - Lost Opportunity	\$0.0
Total Capacity Service	\$15.27

Capacity Services costs were less than last month, and are consistent with December 2011.

December 2012 cost was \$15.27M, compared to:

- A charge of \$23.95M in November 2012
- A charge of \$17.11M in December 2011

Energy Settlement – December 2012

Day-Ahead Market Energy Settlement	\$ in Millions
Energy Purchases	\$303.24
Point to Point Obligation Purchases	\$13.12
RMR Day-Ahead Revenue	\$0.00
Energy Sales	(\$298.07)
Day-Ahead Congestion Rent	\$18.29
Day-Ahead Market Make-Whole Payments	(\$0.55)

Day-Ahead Market settlement decreased from last month. Real-Time energy settlement decreased from previous month. Decreases are attributable to lower prices.

Real-Time Market Energy Settlement	\$ in Millions
Energy Imbalance at a Resource Node	(\$376.73)
Energy Imbalance at a Load Zone	\$508.16
Energy Imbalance at a Hub	(\$115.72)
Real Time Congestion from Self Schedules	\$1.44
Block Load Transfers and DC Ties	(\$3.38)
Impact to Revenue Neutrality	\$13.78
Emergency Energy Payments	(\$0.06)
Base Point Deviation Charges	\$0.28
Real-Time Metered Generation (MWh in millions)	24.80

Congestion Revenue Rights (CRR) – December 2012

Auction Disbursements	\$ in Millions
Annual Auction	(\$10.25)
Monthly Auction	(\$11.20)
Total Auction Revenue	(\$21.45)
Day-Ahead CRR Settlement	(\$18.43)
Day-Ahead CRR Short-Charges	\$1.72
Day-Ahead CRR Short-Charges Refunded	(\$1.64)
Real-Time CRR Settlement	(\$1.63)
Real-Time CRR Short-Charges	\$0.06
Real-Time CRR Short-Charges Refunded	(\$0.06)
Total CRR Proceeds	(\$19.98)
Day-Ahead Point to Point Obligations Settlement	\$13.12
Real-Time Point to Point Obligation Settlement	(\$12.95)
Net Point to Point Obligation Settlement	\$0.16

Congestion Revenue Rights were not fully funded. Excess funds were not available for distribution to load.

Distribution of balancing account funds to load for December 2012 was \$0, compared to:

- \$0 in November 2012
- \$0 in December 2011

Point to Point Obligations settled with a net loss of \$0.16M which can be attributed to lower prices in Real-Time.

Revenue Neutrality – December 2012

Revenue Neutrality Settlement

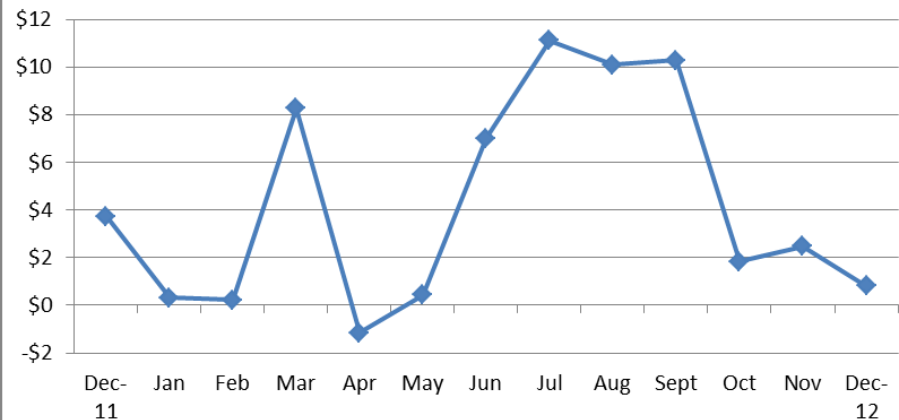
	\$ in Millions
Real-Time Point to Point Obligation Settlement	(\$12.95)
Real-Time Point to Point Options and Options with Refund Settlement	(\$1.63)
Real-Time Energy Imbalance Settlement	\$15.71
Real-Time Congestion from Self-Schedules Settlement	\$1.44
DC Tie & Block Load Transfer Settlement	(\$3.38)
Charge to Load	\$0.81

Revenue Neutrality charges to load decreased compared to November 2012.

December 2012 was a charge of \$0.81M, compared to:

- \$2.48M charge in November 2012
- \$3.75 charge in December 2011

Revenue Neutrality Uplift (\$Mil)



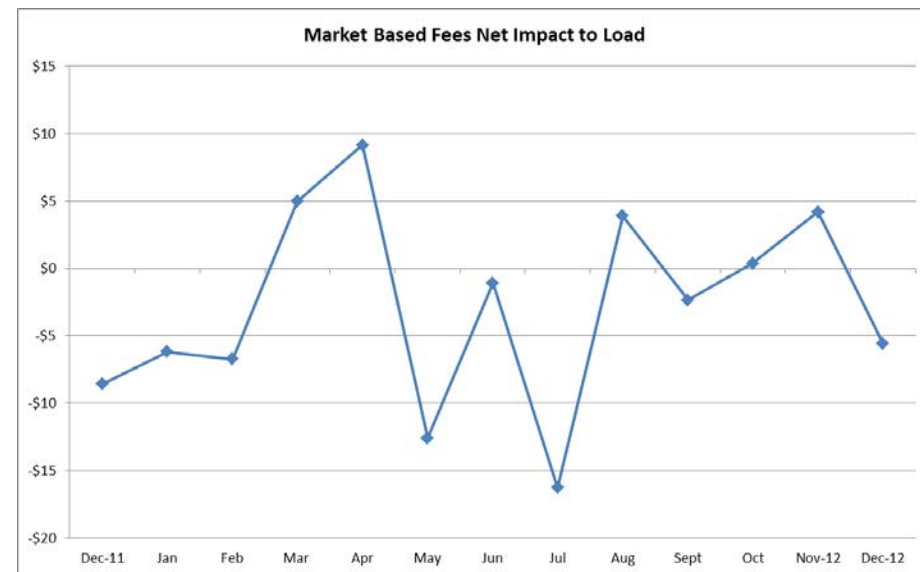
Net Uplift to Load – December 2012

Market-Based Uplifts	\$ in Millions
CRR Auction Revenue Disbursement Settlement	(\$21.45)
Balancing Account Proceeds Settlement	\$0.00
Net Reliability Unit Commitment Settlement	(\$0.00)
Ancillary Services Settlement	\$15.27
Reliability Must Run Services Settlement	\$0.0
Reliability Must Run for Capacity	\$0.0
Real-Time Revenue Neutrality Settlement	\$0.81
Emergency Energy Settlement	\$0.06
Base Point Deviation Settlement	(\$0.28)
Total	(\$5.59)
Fee Uplifts	
ERCOT Administrative Fee Settlement	\$10.42
Net Uplift Charge to Load	\$4.83

Net uplift to Load decreased from last month, and increased from December of 2011.

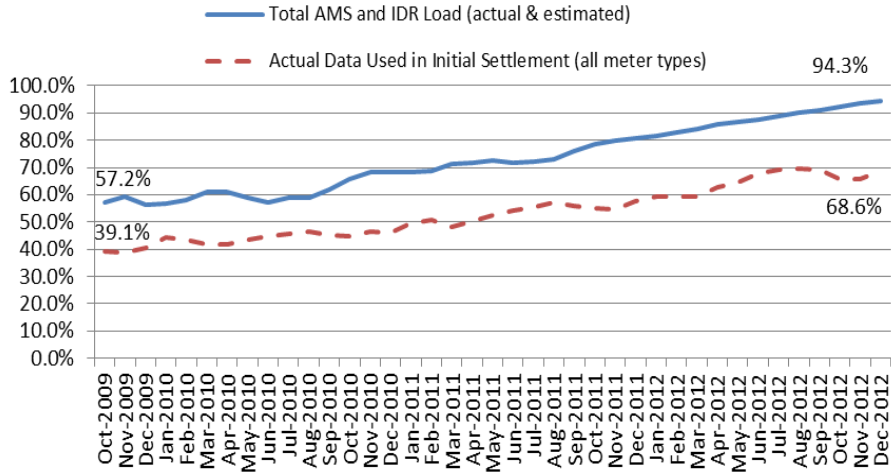
December 2012 was a charge of \$4.83M, compared to:

- A charge of \$13.51M in November 2012
- A charge of \$1.87M in December 2011



Advanced Meter Settlement Impacts – December 2012

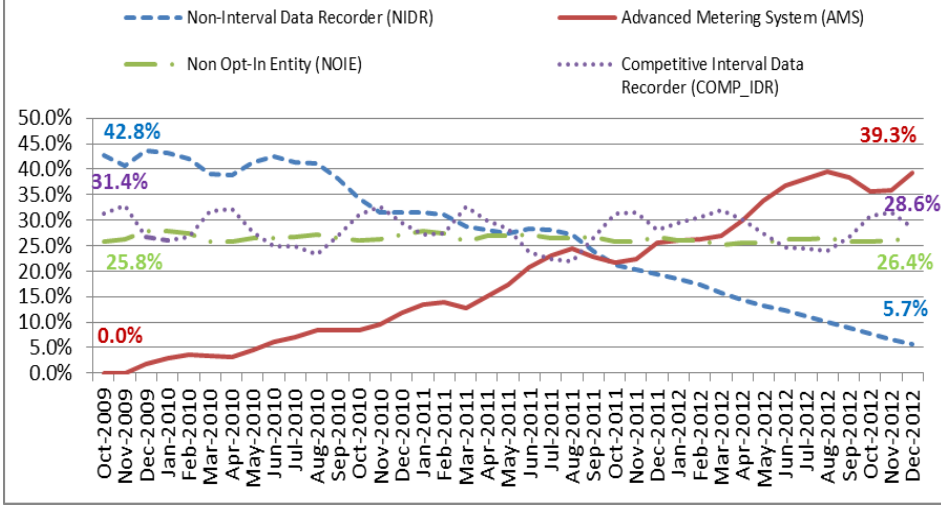
Percent Actual/Percent Interval Data Recorder (IDR)



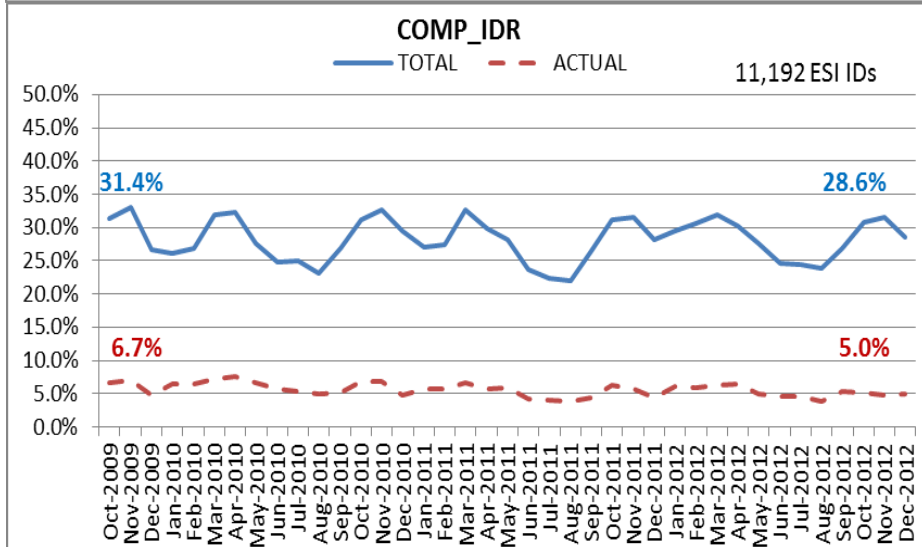
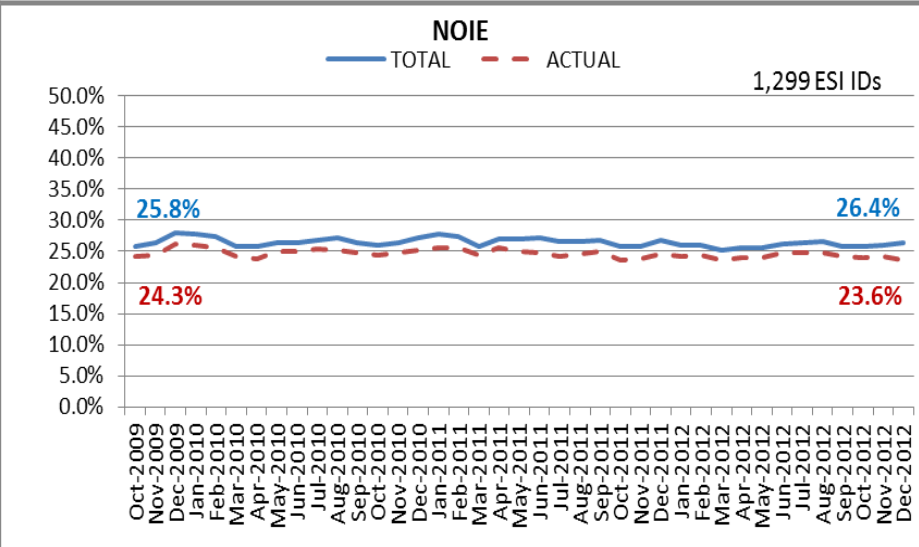
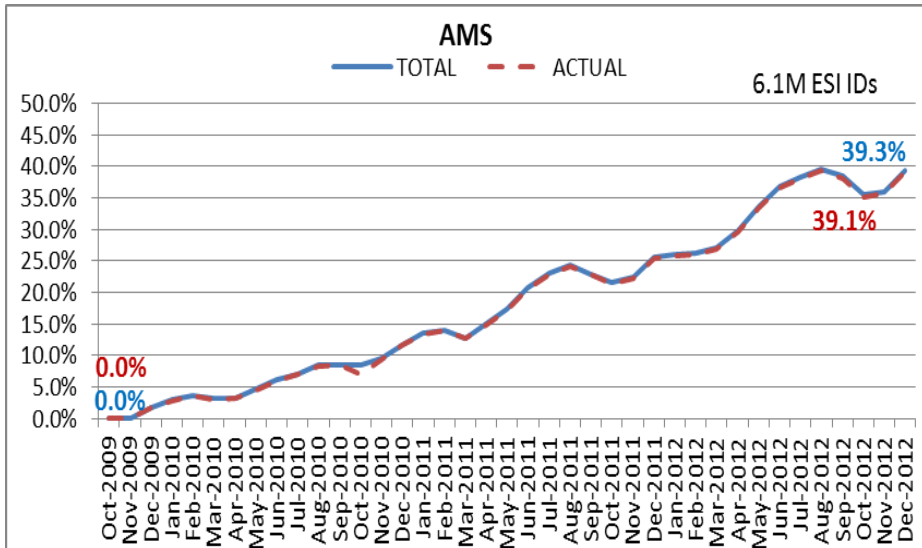
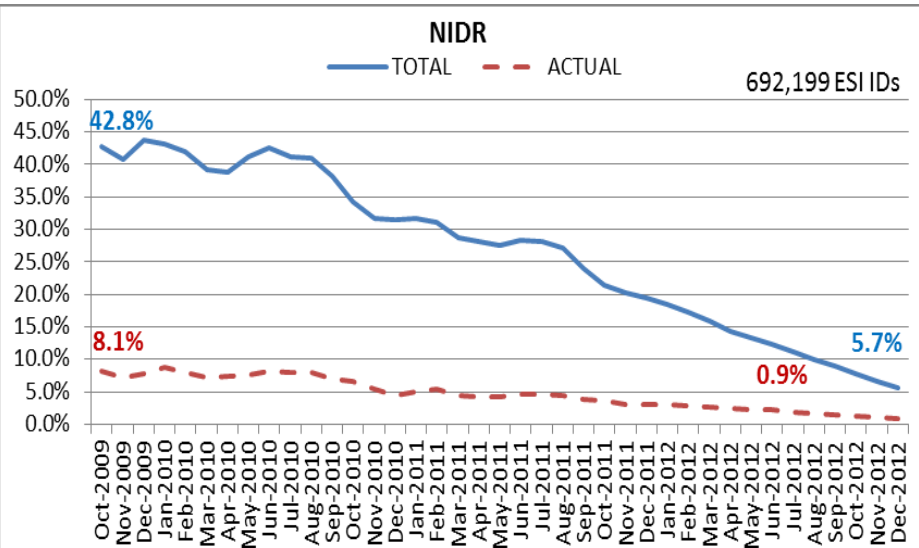
December 2012: At month end, settling 6.1M ESIIDs using Advanced Meter data.

December 2012: 94.3% of the load in ERCOT is settled with 15-min interval data (AMS, Competitive IDR, and NOIE IDR).

Percent of Load by Meter Type



ERCOT Wide Load Volumes by Meter Type - INITIAL Settlement - December 2012

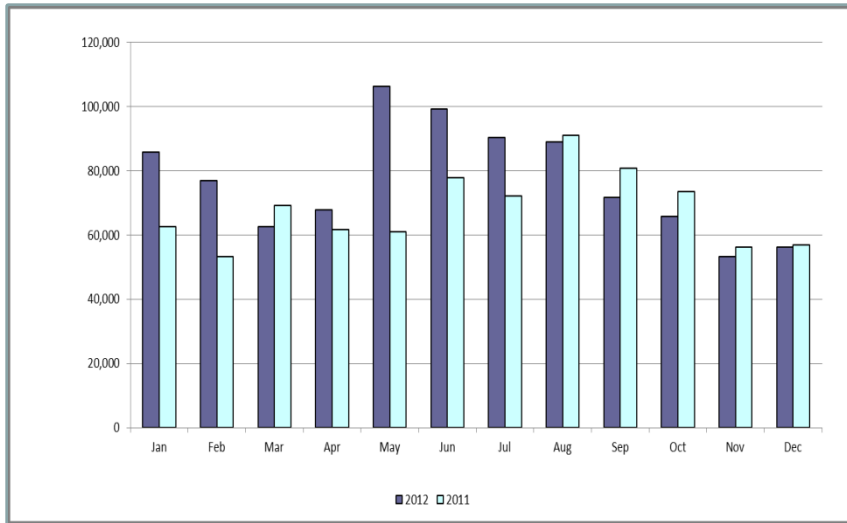


Retail Transaction Volumes – Summary – December 2012

Transaction Type	Year-To-Date		Transactions Completed	
	Dec 2012	Dec 2011	Dec 2012	Dec 2011
Switches	914,568	815,863	45,913	56,906
Acquisition	9,836	0	9,836	0
Move - Ins	2,235,478	2,214,998	159,140	162,867
Move - Outs	1,110,142	1,120,023	80,655	80,606
Continuous Service Agreements (CSA)	691,140	370,312	37,242	27,107
Mass Transitions	5,518	22,056	0	0
Total	4,966,682	4,543,252	332,786	327,486
Total since June 1, 2001	49,891,526			

Retail Transaction Volumes – Summary – December 2012

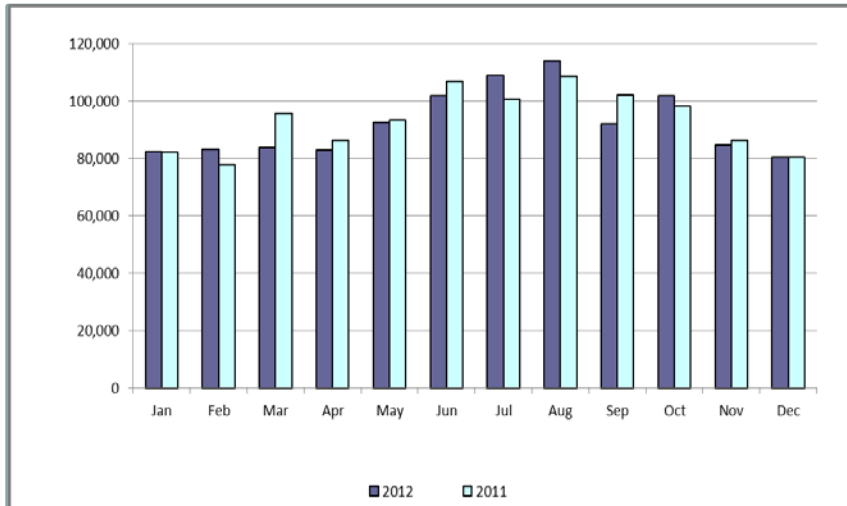
Switches/Acquisitions



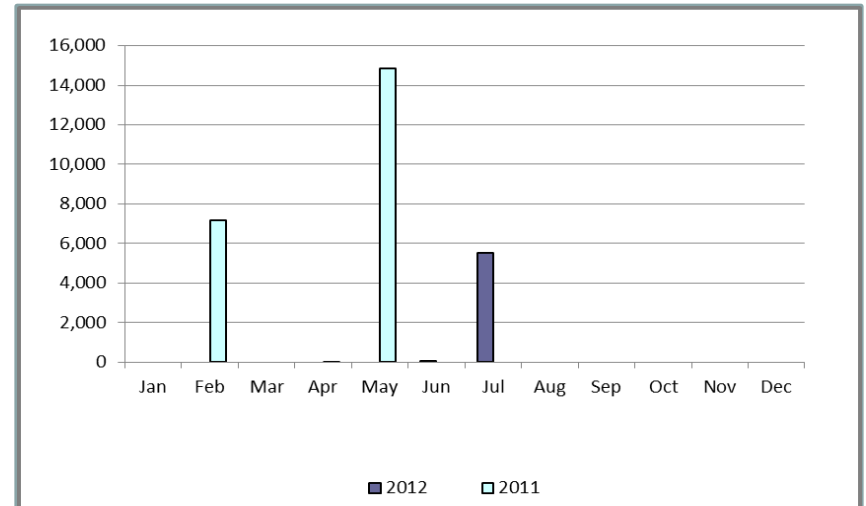
Move-Ins



Move-Outs

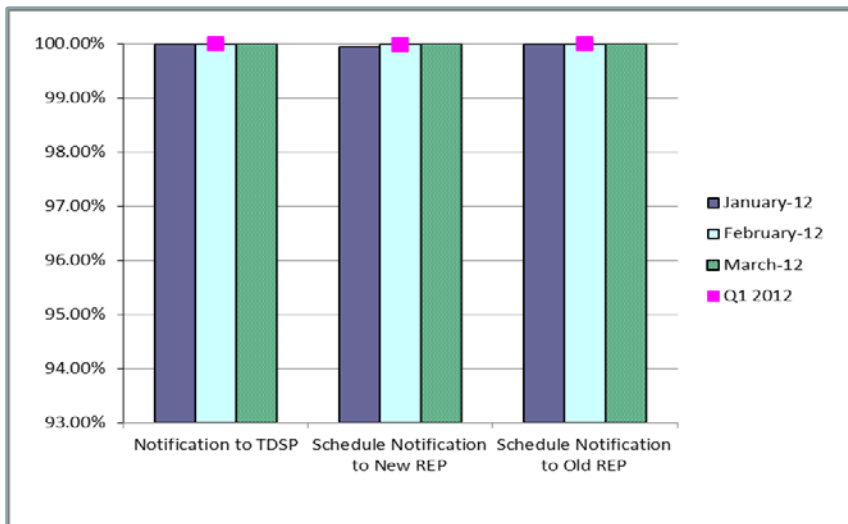


Mass Transition

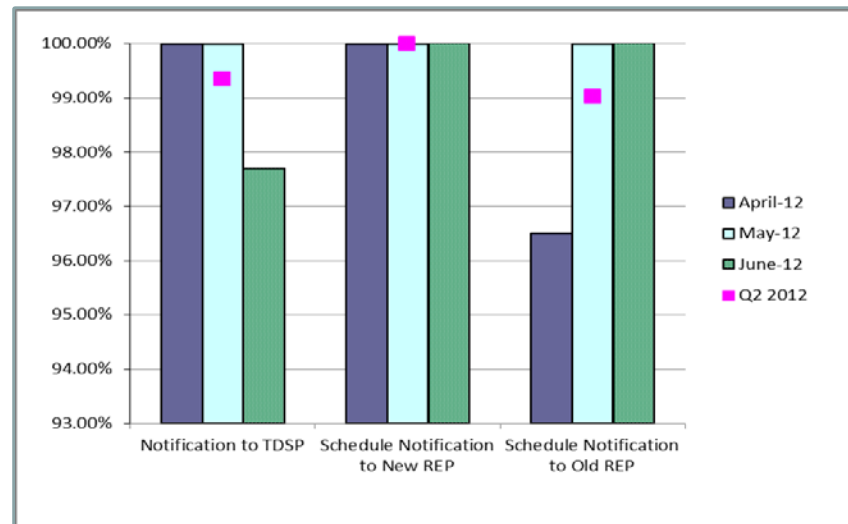


Retail Performance Measures – Switch – December 2012

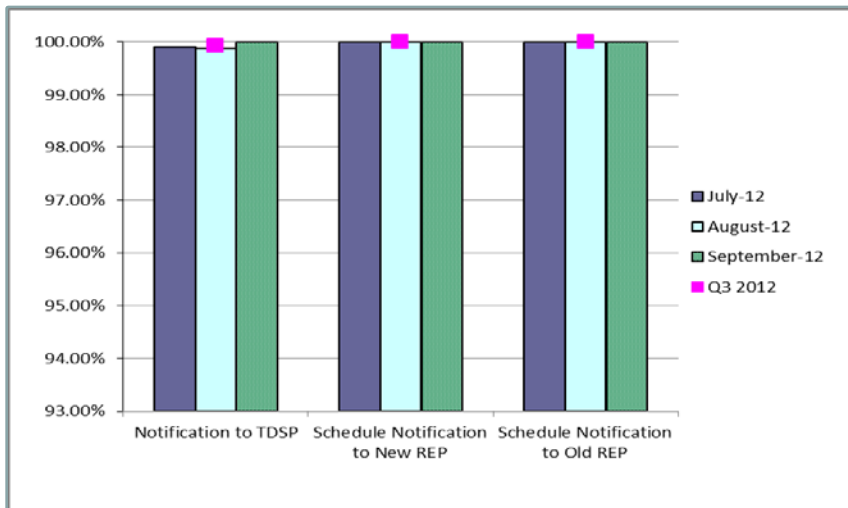
1st Quarter



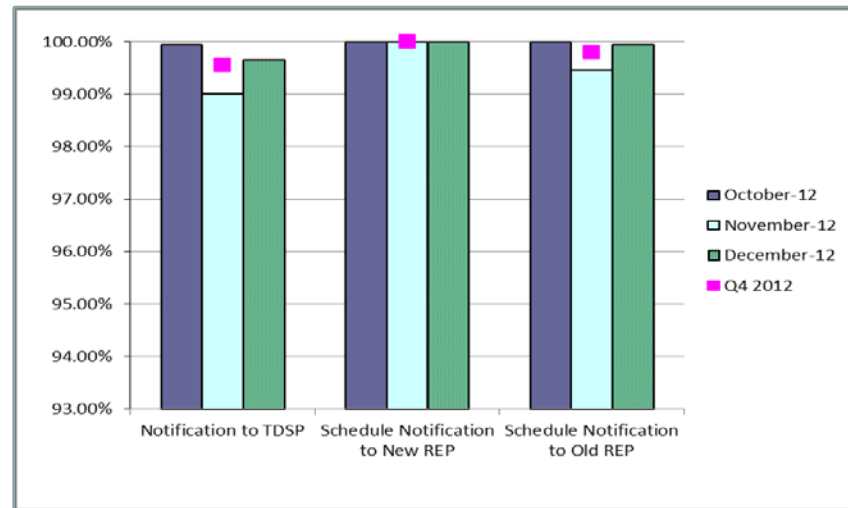
2nd Quarter



3rd Quarter

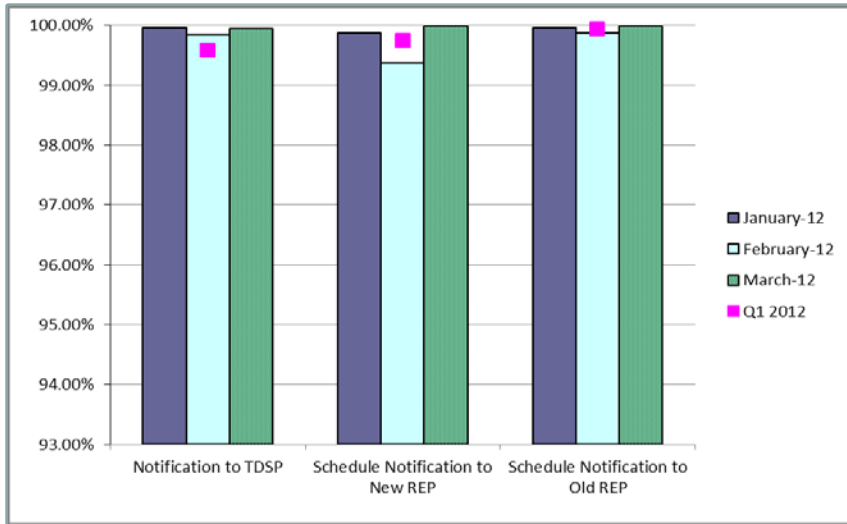


4th Quarter

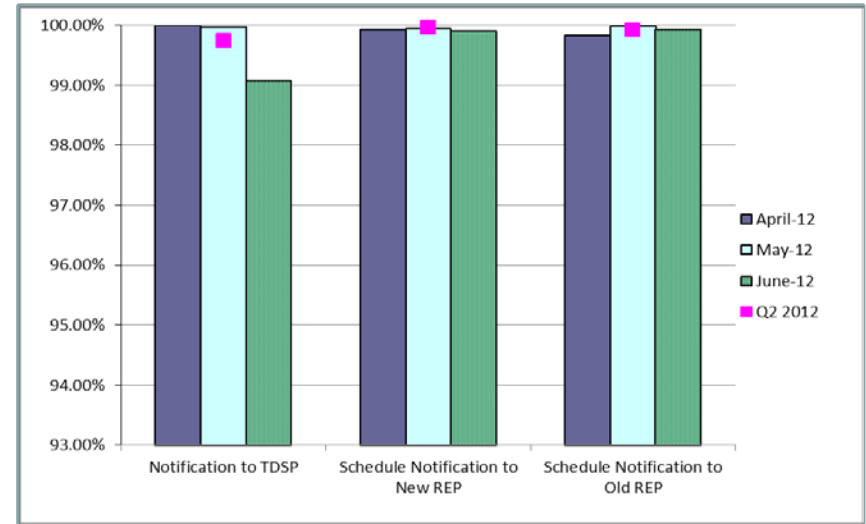


Retail Performance Measures (Priority Move-In) – December 2012

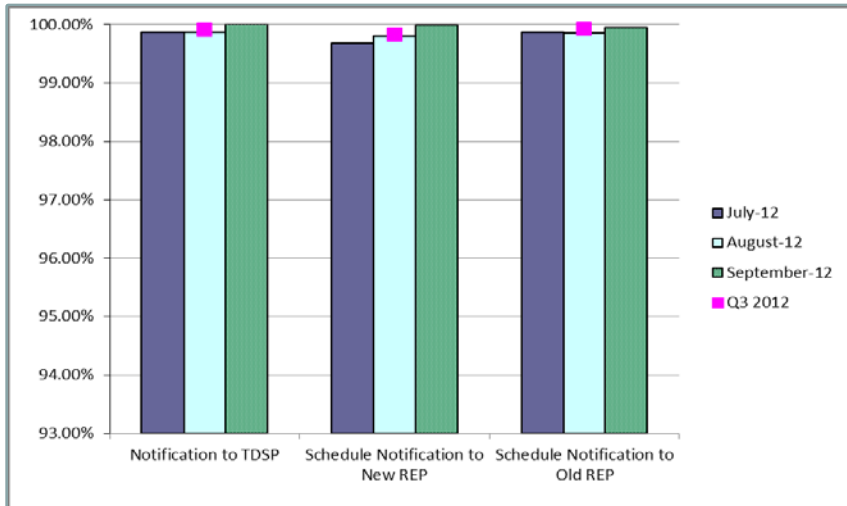
1st Quarter



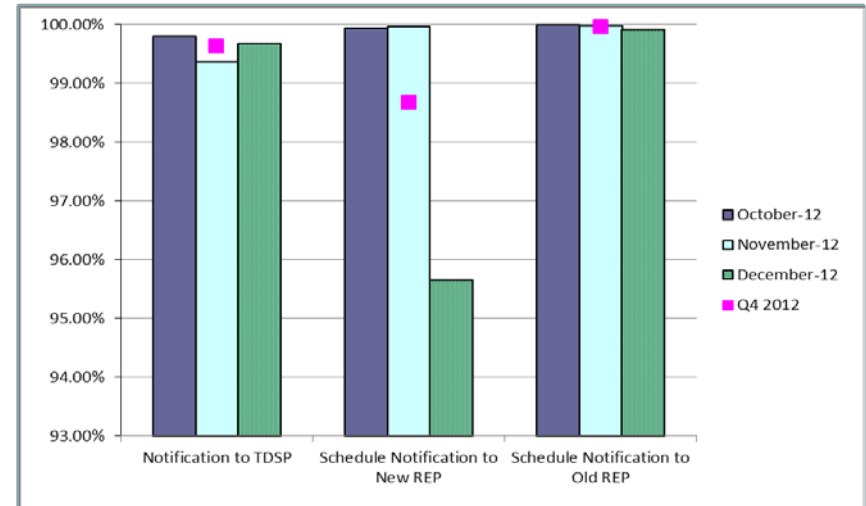
2nd Quarter



3rd Quarter

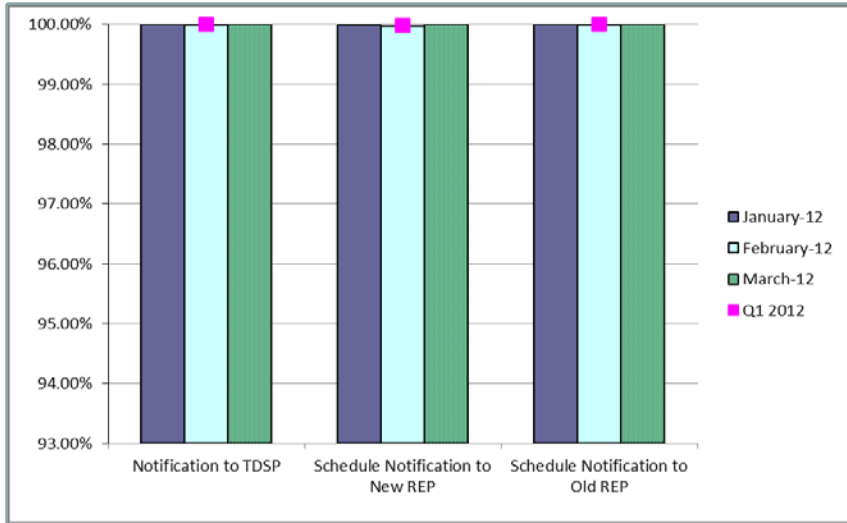


4th Quarter

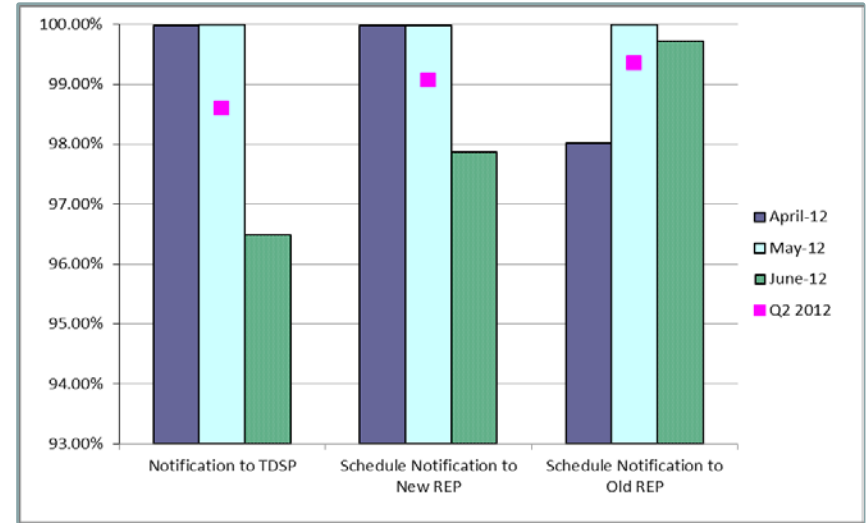


Retail Performance Measures (Standard Move-In) – December 2012

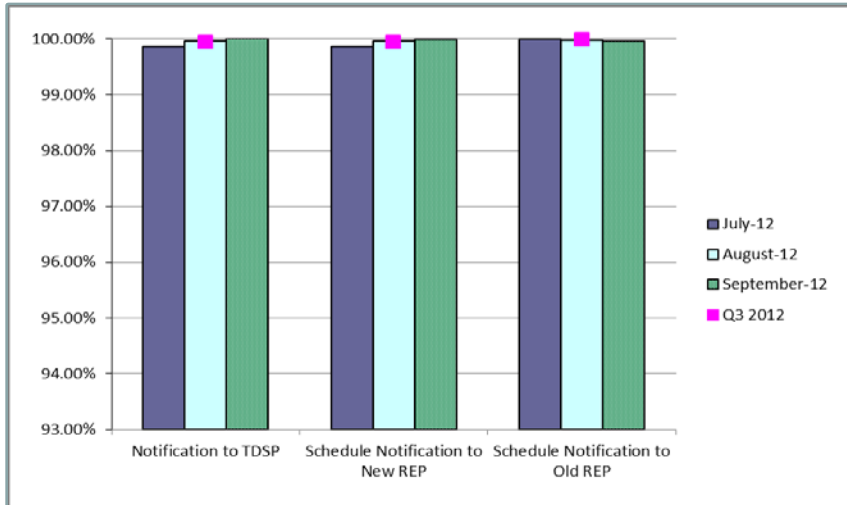
1st Quarter



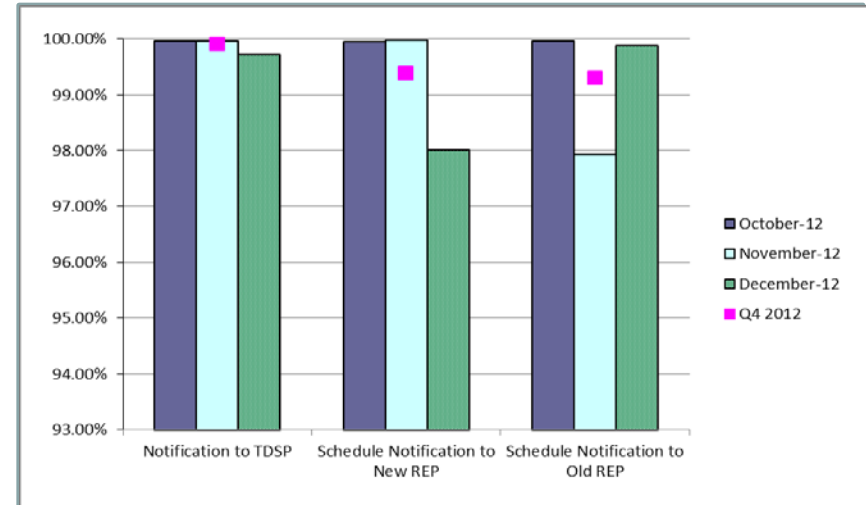
2nd Quarter



3rd Quarter



4th Quarter





Projects Report

ERCOT Portfolio Stoplight Report (as of 12/31/2012)

Project Number	Project Name	Phase	Baseline Phase Start	Baseline Phase Finish	Scheduled Phase Finish	Schedule Status	Sum of 2012 Budgets	2012 Forecast Spend	2012 Variance	Sum of Total Budgets	Total Forecast Spend	Total Variance	
PROJECTS IN FLIGHT (Count = 47) Sorted by Phase / Project Num							\$ 11,493,727	\$ 10,045,265	12%	\$ 29,134,899	\$ 27,047,221	7%	
065-01	NMMS Upgrade	Initiation							100%			2%	
070-01	Linux Configuration Management Tool	Initiation							0%			0%	
071-01	Windows Server Systems Management	Initiation							0%			0%	
072-01	OSI PI Upgrades - EMS Production	Initiation							0%			0%	
074-01	Mobile Device Management	Initiation							0%			0%	
075-01	Operator Data Display	Initiation							0%			-3%	
NPRR272	Definition and Participation of Quick Start Generation Resources	Initiation							0%			-1%	
NPRR393	SCED Constraint Management Transparency	Initiation							12%			18%	
NPRR456	Clarification of Definition of Electrically Similar Settlement Points and Heuristic Pricing Posting	Initiation							0%			0%	
NPRR461	Energy Storage Settlements Consistent with PUCT Project 39917	Initiation							20%			-1%	
NPRR416	Removal of the RUC Clawback Charge for Resources Other than RMR Units	Initiation							0%			0%	
SCR770	Revision to Outage Scheduling Entry for Resource Maintenance Outage Level Designation	Initiation							0%			0%	
047-01	CMS and MIR Replacement	Planning	5/31/2012	12/19/2012	1/17/2013	2	-14%		-3%			1%	
052-01	EMS Upgrade	Planning	7/25/2012	1/31/2013	1/29/2013		1%		19%			18%	
055-01	Siebel Upgrade 8.x	Planning	8/15/2012	1/11/2013	1/8/2013		2%		-3%			-1%	
057-01	EPS Metering DB Redesign	Planning	7/5/2012	2/27/2013	2/27/2013		0%		13%			3%	
059-01	Security Information and Event Management (SIEM) Upgrade	Planning	11/21/2012	5/8/2013	5/8/2013		0%	8	-232%			0%	
066-01	Planning Site Transition to MIS	Planning	10/10/2012	1/9/2013	1/9/2013		0%		10%			3%	
067-01	Physical Security Upgrade	Planning	10/17/2012	1/23/2013	1/17/2013		6%		39%			0%	
NPRR327	State Estimator Data Redaction Methodology	Planning	12/5/2012	2/12/2013	2/12/2013		0		76%			8%	
010-02	MarkeTrak Upgrade	Execution	12/12/2012	7/31/2013	6/26/2013		15%		4%			0%	
NPRR347	Implementation of NPRR347 and NPRR400	Execution	3/29/2012	3/13/2013	3/13/2013		0%	8	-15%			8	-8%
NPRR400		On Hold	5/23/2012	11/7/2012		10		16%				0%	
016-01	ADP-IDM Interface	On Hold	5/23/2012	11/7/2012		10		16%				0%	
017-01	Oracle 11g Upgrade	Execution	10/10/2012	8/21/2013	8/21/2013		0%		12%			17%	
019-01	ERCOT Website Enhancements - 2012	Execution	3/8/2012	12/26/2012	TBD	8		8				8	
020-01	CIM Upgrade for NMMS	Execution	6/14/2012	3/13/2013	3/13/2013		0%		34%			25%	
021-01	Incremental Update Capability - Phase 1	Execution	3/23/2012	2/6/2013	2/6/2013		0%		63%			60%	
029-01	Capital Efficiencies and Enhancements	Execution	1/1/2012	12/31/2012	12/31/2012		0%		1%			1%	
030-01	TRON Load Forecast	Execution	6/27/2012	3/13/2013	2/28/2013		5%		-2%			-1%	
038-01	Macomber Map NERC SA/Compliance Enhancements	Execution	9/19/2012	2/28/2013	2/28/2013		0%		8	-9%		8	-9%
042-01	CRR Upgrade to v12.3	Execution	5/16/2012	2/18/2013	5/6/2013	8	-27%		0%			16%	
046-01	MAI Conversion to IGRID	Execution	8/2/2012	3/13/2013	3/13/2013		0%		18%			17%	
048-01	TSAT Wind Model	Execution	8/16/2012	5/31/2013	5/28/2013		1%		20%			16%	
10052_01	Settlement System Upgrade	Execution	1/25/2012	12/30/2014	12/30/2014		0%		36%			4%	
2012 PC	Program Control Project	Execution	1/1/2012	12/31/2012	12/31/2012		0%		27%			27%	
90006_02	Information Lifecycle Mgmt - Mkt Systems, Archive, Reporting	Execution	4/22/2011	12/4/2013	12/4/2013		0%		54%			9%	
99912	Minor Cap - 2012	Execution	1/1/2012	12/31/2012	12/31/2012		0%	4	-21%			8	-21%
NPRR260	Providing Access to MIS Secure Area to MIS Registered Users	Execution	10/3/2012	3/13/2013	3/13/2013		0%		25%			26%	
NPRR313	Updating the Term Resource Plan to Current Operating Plan / Availability Plan	Execution	8/22/2012	3/13/2013	3/13/2013		0%		31%			27%	
NPRR322	Real-Time PTP Option Modeling	Execution	8/1/2012	3/13/2013	3/13/2013		0%		8%			7%	
NPRR377	Alternate Inputs to Base Point Deviation Charge	Execution	9/26/2012	3/13/2013	3/13/2013		0%		19%			19%	
NPRR397	Balance of the Day Ancillary Service Market	Execution	9/19/2012	3/13/2013	3/13/2013		0%		38%			34%	
NPRR407	Credit Monitoring Posting Requirements - MMS/CDR Portion	Execution	9/19/2012	3/13/2013	3/13/2013		0%		33%			28%	
NPRR463	CRR Auction Structure Enhancements	Execution	12/20/2012	6/5/2013	6/5/2013		0%	8	-52%			-3%	
NPRR469	Modifications to CCTs	Execution	9/19/2012	3/13/2013	3/13/2013		0%		88%			81%	
SCR760	Recommended Changes Needed for Information Model Mgr and Topology Processor for Planning Models	Execution	8/25/2011	7/31/2013	7/31/2013		0%		-3%			0%	
SCR768	Automatic Non-Spin Redeployment and Deployment Based on Resource Availability	Execution	9/19/2012	3/13/2013	3/13/2013		0%		12%			11%	

ERCOT Portfolio Spotlight Report (as of 12/31/2012)

Project Number	Project Name	Phase	Baseline Phase Start	Baseline Phase Finish	Scheduled Phase Finish	Schedule Status	Sum of 2012 Budgets	2012 Forecast Spend	2012 Variance	Sum of Total Budgets	Total Forecast Spend	Total Variance
PROJECTS NOT YET STARTED (Count = 38)			Sorted by P	Forecast Start Date			\$ -	\$ -		\$ 12,710,895	\$ 11,645,404	
99913	Minor Cap - 2013	Not Started	Jan 2013									
NOGRR093	Synchronization with NPPR365	Not Started	Jan 2013									
NPPR425	Creation of a WGR Group for GREDP and Base Point Deviation Evaluation	Not Started	Jan 2013									
TBD	ABB MMS OS Technology Refresh	Not Started	Jan 2013									
TBD	Additional Resource Data for Outage Scheduler	Not Started	Jan 2013									
TBD	Contract Lifecycle Management	Not Started	Jan 2013									
NOGRR084	Daily Grid Operations Summary Report	Not Started	Feb 2013									
NPPR385	Negative Price Floor	Not Started	Feb 2013									
TBD	EPG Synchrophasor Upgrade	Not Started	Feb 2013									
TBD	Information Technology Change Management	Not Started	Feb 2013									
TBD	MP Online Data Entry - Ph 1	Not Started	Feb 2013									
TBD	NAS Data Storage / File Synchronization - EMMS System and Applications	Not Started	Feb 2013									
TBD	OTS Enhancements	Not Started	Feb 2013									
NPPR153	Generation Resource Fixed Quantity Block Offer	Not Started	Mar 2013									
NPPR256	Sync with PRR787, Add Non-Compliance Language to QSE Performance Standards	Not Started	Mar 2013									
NPPR407	Credit Monitoring Posting Requirements - CRR Portion	Not Started	Mar 2013									
SCR769	CRRRAH Digital Certificate New Role for Read Only Access	Not Started	Mar 2013									
SCR771	ERCOT System Change Allowing Independent Master QSE to Represent Split Generation Resources	Not Started	Mar 2013									
TBD	Cognos 10.x Upgrade	Not Started	Mar 2013									
TBD	Net Backup Architecture Redesign	Not Started	Mar 2013									
NPPR207	Unit Deselection	Not Started	Apr 2013									
NPPR340	Introduction and Definition of Duration-Limited Resources	Not Started	Apr 2013									
NPPR439	Updating a Counter-Party's Available Credit Limit for Current Day DAM	Not Started	Apr 2013									
NPPR476	Market Submitted Energy Offer Curves Disclosures	Not Started	Apr 2013									
TBD	Email Redundancy	Not Started	Apr 2013									
TBD	Emergency Notification System Hardware Refresh	Not Started	Apr 2013									
TBD	Quality Center Upgrade	Not Started	Apr 2013									
NPPR457	Daily Update of New ESI IDs and AMS Meter and Switch Hold Indicators Changes	Not Started	Jun 2013									
SCR756	MarkeTrak Enhancements - Remaining SCR756 Items	Not Started	Jun 2013									
TBD	IBM AIX Operating System Upgrades	Not Started	Jun 2013									
NPPR210	Wind Forecasting Change to P50, Sync with PRR841	Not Started	Jul 2013									
NPPR419	Revise Real Time Energy Imbalance and RMR Adjustment Charge	Not Started	Jul 2013									
TBD	Dev Hardware Refresh and Virtualization Expansion	Not Started	Jul 2013									
TBD	SQL Server 2012 Upgrade / Cluster Consolidation	Not Started	Jul 2013									
TBD	Symposium Call Center Replacement	Not Started	Jul 2013									
TBD	Red Hat Jboss Operations Network	Not Started	Aug 2013									
TBD	Taylor Control Room Upgrade	Not Started	Aug 2013									
TBD	Voice Over IP (VOIP) Replacement for PBX	Not Started	Oct 2013									

ERCOT Portfolio Stoplight Report (as of 12/31/2012)

Project Number	Project Name	Phase	Baseline Phase Start	Baseline Phase Finish	Scheduled Phase Finish	Schedule Status	Sum of 2012 Budgets	2012 Forecast Spend	2012 Variance	Sum of Total Budgets	Total Forecast Spend	Total Variance	
PROJECTS COMPLETED IN 2012 (Count = 40) Sorted by Project			Dates below are final Execution phase dates					\$ 5,702,827	\$ 6,384,937	-11%	\$ 52,650,464	\$ 51,191,735	2%
006-01	SAGE (System Administrator Gateway Environment)	Closing	5/31/2012	12/19/2012	12/28/2012	-4%			-4%			-4%	
009-01	Compliance Software Tool	Closing	12/1/2011	11/30/2012	12/13/2012	-3%			2%			20%	
043-01	Met Center Lease Reconfiguration	Closing	9/12/2012	12/19/2012	12/19/2012	0%			0%			0%	
025-47	RARF Upgrade for Wind, Solar, and Storage Resources	Complete	9/7/2011	4/30/2012	6/29/2012	2	-25%		7%			7%	
004-01	Secure Remote Access Management (SRAM)	Complete	12/5/2011	3/7/2012	3/7/2012	0%			6	-167%		6	-9%
005-01	Endpoint Security Phase 1	Complete	12/15/2011	4/25/2012	5/8/2012	2	-9%		8	-28%		1	1%
007-01	Taylor Facility Remodel	Complete	9/14/2011	1/15/2012	1/25/2012	2	-8%		6	-999%			20%
SCR756	MarkeTrak Enhancements for 4.0	Complete	10/26/2011	7/27/2012	7/6/2012	7%			5	-7%			2%
011-01	ERCOT Mobile	Complete	3/29/2012	8/8/2012	8/8/2012	0%				9%			16%
NPRR326 NPRR321 NPRR355	MMS 2012 Release 1: NPRR321/NPRR326/NPRR355	Complete	12/14/2011	2/23/2012	2/23/2012	0%				4%			88%
015-01	Outage Capacity Calculation Tool	Complete	1/4/2012	4/30/2012	4/30/2012	0%				-1%			0%
023-01	Quality Training Database	Complete	2/22/2012	5/30/2012	5/31/2012	-1%				10%			10%
025-43	EDW Platform Transition	Complete	2/15/2012	4/30/2012	4/30/2012	0%				22%			22%
025-52	HP Openview Upgrade	Complete	11/1/2011	12/29/2011	4/1/2012	3	-162%		5	-9%		5	-9%
037-01	SMTNET Improvements	Complete	6/20/2012	9/29/2012	9/28/2012	0%				1%			1%
040-01	Lawson Upgrade to 9.0.1	Complete	4/18/2012	8/22/2012	8/22/2012	0%			2	-33%		2	-33%
045-01	UC4 (AppWorx) Automation Upgrade v8	Complete	6/27/2012	11/9/2012	11/15/2012	-4%				32%			32%
049-01	Contingency Functionality Enhmts.	Complete	7/12/2012	11/28/2012	11/28/2012	0%				43%			43%
11000-01	Data Center Buildout	Complete	1/3/2011	1/31/2012	1/30/2012	0%			9	-115%			1%
NPRR294 NPRR403 RMGR100	Texas SET 4.0	Complete	7/6/2011	7/13/2012	7/13/2012	0%			7	-36%			-3%
NPRR314	Requirement to Post Generation Resources Temporal Constraints	Complete	3/5/2012	4/29/2012	4/27/2012	3%				27%			27%
NPRR348	Generation Resource Start-Up and Shut-Down Process	Complete	3/29/2012	9/26/2012	9/26/2012	0%				31%			31%
NPRR351	SCED Look-Ahead Step 1: Pricing	Complete	1/25/2012	7/31/2012	7/30/2012	0%				29%			32%
NPRR354	Revisions to Non-Spin Performance Criteria Language and Provision for ICCP Telemetry of Non-Spin Deployment	Complete	3/29/2012	8/4/2012	8/16/2012	8	-9%			37%			37%
NPRR357	Revisions to Collateral Requirements Concerning CRR Auctions	Complete	4/19/2012	10/17/2012	10/17/2012	0%				0%			0%
NPRR359	Monthly TDSP Load Report	Complete	3/1/2012	5/2/2012	5/4/2012	-3%				5%			5%
NPRR360	Summary Report of HDL and LDL	Complete	4/18/2012	7/11/2012	7/11/2012	0%				21%			21%
NPRR361	Real-Time Wind Power Production Data Transparency	Complete	1/11/2012	5/3/2012	5/2/2012	0%			1	-122%		1	-122%
NPRR365	Change in Resource Outage Approvals from Eight to 45 Days	Complete	6/1/2012	11/21/2012	11/21/2012	0%				0%			2%
NPRR379	EILS Dispatch Sequence and Performance Criteria Upgrades	Complete	4/16/2012	6/26/2012	6/29/2012	-4%				9%			9%
NPRR382	Verbal RUC Committed or Decommited Resources Report	Complete	5/30/2012	9/19/2012	9/11/2012	7%				25%			25%
NPRR383	Unconfirmed Trades Reports	Complete	6/20/2012	9/14/2012	9/14/2012	0%				22%			22%
NPRR395	CRR Auction Offer Award Disclosure	Complete	2/29/2012	4/25/2012	4/27/2012	-3%				6%			6%
NPRR422	Public DAM Shift Factors	Complete	7/2/2012	8/29/2012	8/29/2012	0%				0%			0%
NPRR434	Increase the Capacity Limitation of a Generation Resource Providing RRS	Complete	3/7/2012	6/1/2012	5/2/2012	34%				63%			63%
NPRR437	Allow Aggregation of Multiple Generators Into A Single Resource For Mkt & Eng Modeling	Complete	3/29/2012	7/4/2012	7/4/2012	0%				13%			13%
NPRR442	Energy Offer Curve Requirement for Generation Resources Providing Reliability Must-Run Service	Complete	7/2/2012	8/29/2012	8/29/2012	0%				53%			53%
SCR761	Provide Price Replication Notifications via API and Provide Price Corrections via XML	Complete	10/5/2011	3/2/2012	2/28/2012	2%			5	-362%		1	-362%
SCR764	Public Access to Select MIS Dashboards	Complete	7/24/2011	12/9/2011	2/28/2012	1	-58%		5	-7%		5	-7%
026-01	Support for New Resource Types in ERCOT Systems	Cancelled	1/4/2012	8/1/2012	6/11/2012	24%				27%			27%

ERCOT Portfolio Stoplight Report (as of 12/31/2012)

SUMMARY										
						Sum of 2012 Budgets	2012 Forecast Spend		Sum of Total Budgets	Total Forecast Spend
4%	KPI Budget Measure - Execution/Completed Projects				Projects In Flight	\$ 11,493,727	\$ 10,045,265		\$ 29,134,899	\$ 27,047,221
					Projects Not Yet Started	\$ -	\$ -		\$ 12,710,895	\$ 11,645,404
6%	KPI Schedule Measure - Execution/Completed Project				Projects Completed	\$ 5,702,827	\$ 6,384,937		\$ 52,650,464	\$ 51,191,735
					TOTAL	\$ 17,196,554	\$ 16,430,201		\$ 94,496,258	\$ 89,884,360
					2012 Project Funding	\$ 15,000,000				
<p align="center">Stoplight Calculation Definitions</p> <p>Schedule: $\frac{\text{Count of Execution and Completed Projects with Variance } \geq 10\%}{\text{Count of Execution and Completed Projects}}$</p> <p>Budget: $\frac{\text{Total Budget of Execution and Completed Projects} - \text{Total Forecast Spend of Execution and Completed Projects}}{\text{Total Budget of Execution and Completed Projects}}$</p>					<p>Footnotes</p> <ol style="list-style-type: none"> 1 Change in design approach resulted in more funding and/or time required for delivery 2 Current phase took longer than expected, resulting in additional funding and/or time required 3 Vendor unable to complete work planned for 2011 4 Additional Minor Cap purchases authorized 5 Labor hours planned for 2011 occurred in 2012 6 Purchased items planned for 2011 arrived in 2012 7 Contract labor replaced FTE labor (2 instances) 8 Current phase requiring more labor than expected, resulting in additional funding and/or time required 9 Invalid assumption for 2011 accounting related to treatment of prepaids and hardware installation 10 Project temporarily placed on hold 					