



System Planning

Monthly Status Report November 2012

Report Highlights

- **ERCOT is currently tracking 152 active generation interconnection requests totaling over 43,000 MW. This includes over 20,000 MW of wind generation.**
- **ERCOT is currently reviewing proposed transmission improvements with a total cost of \$228.9 Million**
- **Transmission Projects endorsed in 2012 total \$596.8 Million**
- **All projects (in engineering, routing, licensing and construction) total approximately \$9.68 Billion.**
- **Transmission Projects energized in 2012 total about \$732.2 million.**

Table of Contents

1. Generation Interconnection.....	1
1.1 Signed Generation Interconnection Agreements.....	1
1.2 New Generation Registering for Commercial Operations	1
1.3 Summary of Generation Interconnection Requests.....	1
1.4 Projects with Interconnection Agreements.....	4
1.5 Generation Projects Undergoing Full Interconnection Studies with Confidentiality Waived by Developer	4
1.6 Generation Projects Undergoing Full Interconnection Studies	5
1.7 Wind Generation Capacity Installed by Year.....	6
2. Regional Planning Group Project Reviews.....	7
3. Congestion Costs	Error! Bookmark not defined.
4. Wind Generation as a Percent of Load	Error! Bookmark not defined.
5. Planning Model Activities	8
6. Other Notable Activities	9

1. Generation Interconnection

Additional information regarding detailed generation interconnection and impact studies is contained in the “Generation Project Interconnection Information” folder in the “Operations and System Planning” area on the ERCOT website: <http://planning.ercot.com/login/login>.

1.1 Signed Generation Interconnection Agreements

13INR0005 – Conway Windfarm – 600 MW of Wind in Carson County

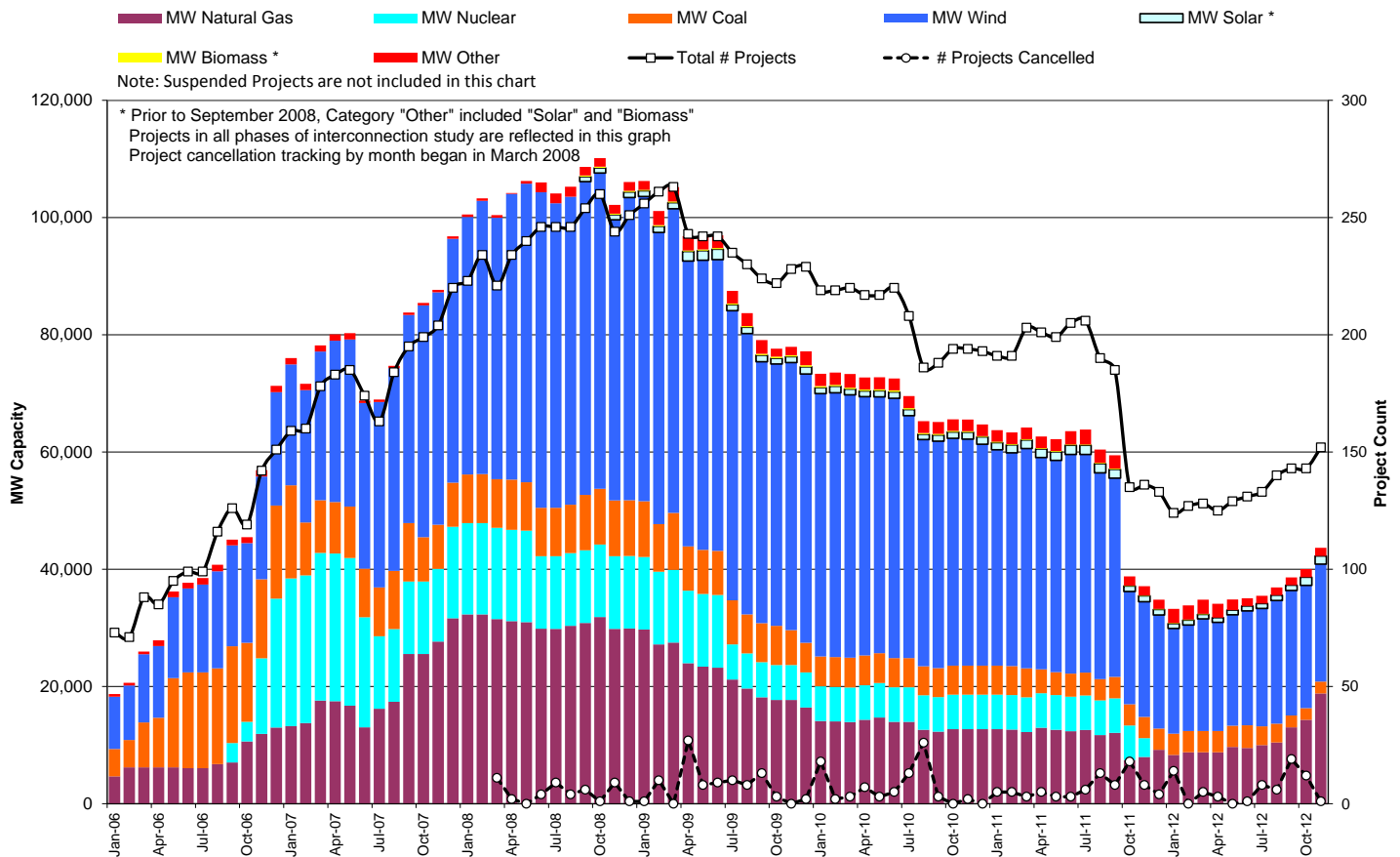
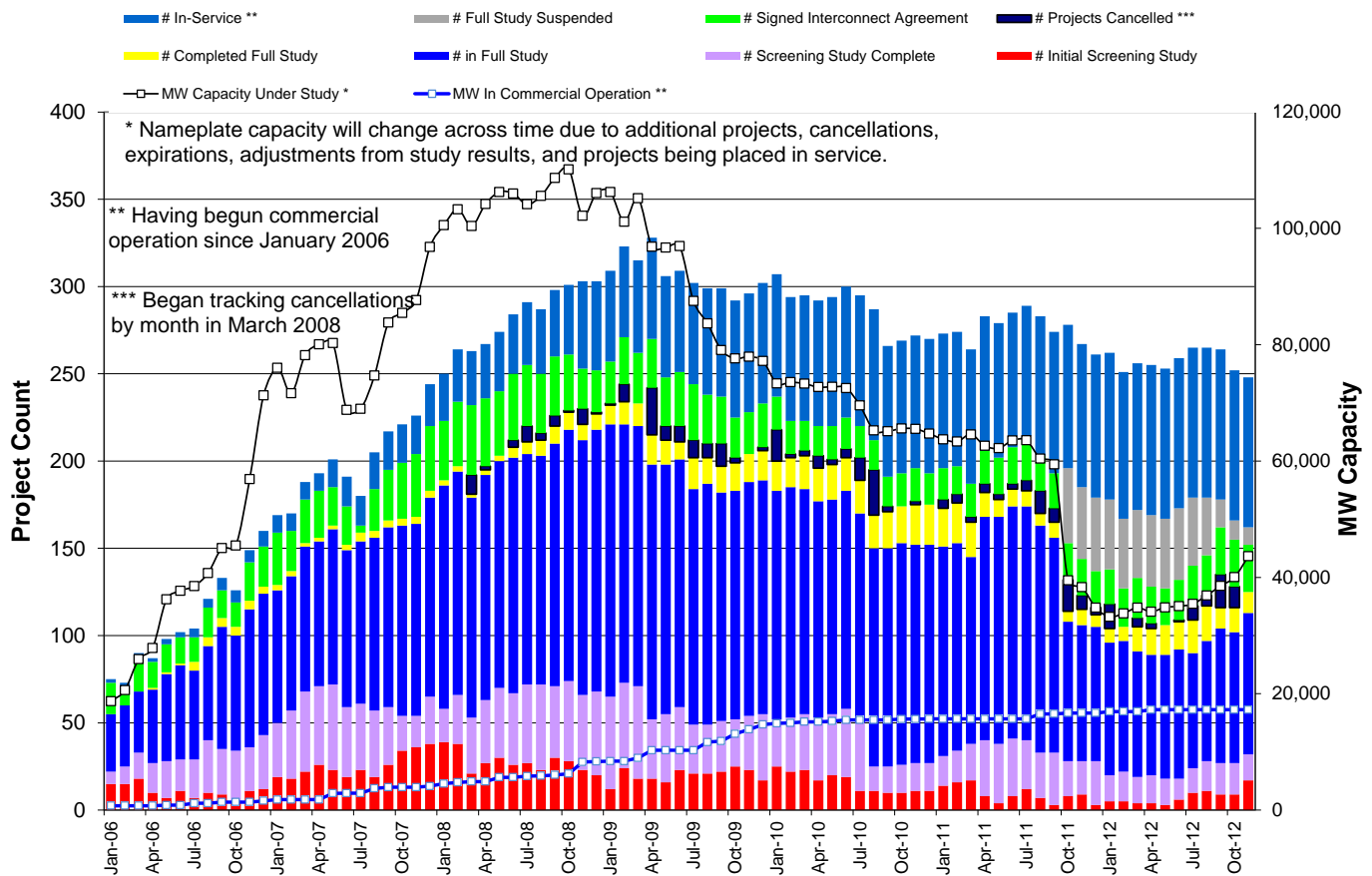
1.2 New Generation Registering for Commercial Operations - none

The total installed wind capacity is now reported as 10,035 MW by the resource owners through the registration process. Capacity by North, South and West is 519 MW, 2,283 MW, and 7,233 MW respectively. 850 MW is able to switch between the West and South zones and is currently shown in the South zone.

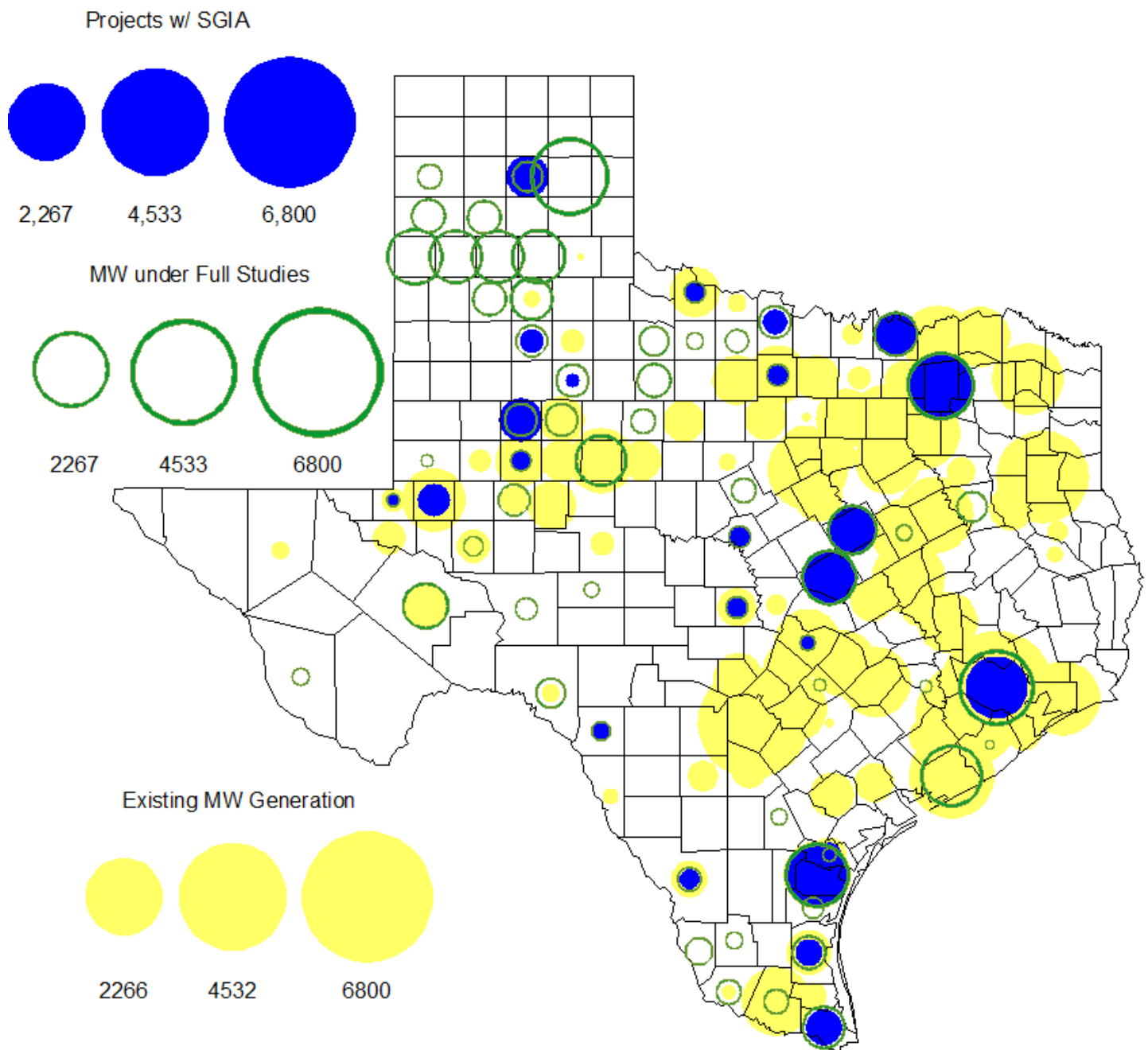
1.3 Summary of Generation Interconnection Requests

GENERATION INTERCONNECTION REQUESTS CURRENTLY UNDER REVIEW	
Currently tracking 162 generation interconnection or change requests	
As of November 28, 2012	Total
Security Screening Study	17
SSS Completed	15
Full Interconnect Study	81
FIS Completed	12
Suspended Studies	10
Capacity of Suspended Study Projects	7,512
Interconnect Agreement Completed	27
Capacity under Interconnection Agreements	11,345
Capacity for Grid, MW	43,650
Wind Capacity, MW	20,056

Fuel Type	Confidential Projects (MW)	Projects Under Full Study (MW)	Public Projects (MW)	Suspended Studies (MW)	Grand Total (MW)
Gas-AllOther					5,940
Gas-CombinedCycle			5,686		12,863
Total Gas	9,035	4,082	5,686		18,803
Nuclear				3,200	3,200
Coal		850	1,165		2,015
Wind	2,577	14,400	3,078	4,273	24,329
Solar	664	657	60	38	1,419
Biomass					
Storage		40	36		76
Petroleum Coke			1,320		1,320
Grand Total	12,276	20,029	11,346	7,512	51,162



County Location of Installed Generation and Interconnection Requests (all fuels)



1.4 Projects with Interconnection Agreements

Generation Interconnections as of November 28, 2012						
INR	Site Name	County	COD	Fuel	MW For Grid	Change from Last Report
12INR0076	Notrees Battery Storage	Winkler	Nov-12	Storage	36	Date
12INR0075	Blue Summit Windfarm	Wilbarger	Nov-12	Wind	135	
08INR0011	Senate Wind Project	Jack	Dec-12	Wind	150	
11INR0091	Whitetail Wind Energy Project	Webb	Dec-12	Wind	92	
12INR0072	Anacacho Windfarm	Kinney	Dec-12	Wind	100	
09INR0061	WKN Mozart	Kent	Dec-12	Wind	30	
11INR0033	Los Vientos	Cameron	Dec-12	Wind	400	
08INR0049	Bobcat Bluff (Briar Creek)	Clay	Dec-12	Wind	163	
09INR0001	Sandy Creek 1	McLennan	Apr-13	Coal	925	
11INR0086	RRE Austin Solar	Travis	Oct-13	Solar	60	
06INR0022c	Penascal Wind Farm 3	Kenedy	Dec-13	Wind	202	
11INR0013	Goldthwaite Wind Energy	Mills	Dec-13	Wind	150	
11INR0054	Midway Farms Wind	San Patricio	Dec-13	Wind	161	
12INR0034	Stephens-Borlynn Wind Project	Borden	Dec-13	Wind	378	
13INR0021	Ferguson Replacement Project	Llano	Jul-14	Gas-CC	116	
10INR0021	Panda Sherman Power	Grayson	Aug-14	Gas-CC	809	
10INR0020a	Panda Temple Power	Bell	Aug-14	Gas-CC	809	
11INR0050	Moore Wind 1	Crosby	Aug-14	Wind	149	
10INR0023	Baker Ranch	Haskell	Sep-14	Wind	400	
13INR0005	Conway Windfarm	Carson	Dec-14	Wind	600	new
09INR0051	Mesquite Creek	Borden	Mar-15	Wind	249	
06INR0006	Cobisa-Greenville	Hunt	May-16	Gas-CC	1,792	Date
08INR0018	Gunsight Mountain	Howard	Aug-15	Wind	120	
13INR0023	Texas Clean Energy Project	Ector	Jan-16	Coal	240	
10INR0020b	Panda Temple Power	Bell	May-16	Gas-CC	780	
10INR0022	Pondera King Power Project	Harris	Jun-16	Gas-CC	1,380	
12INR0016a	Las Brisas Energy Center	Nueces	May-18	PetCoke	660	
12INR0016b	Las Brisas Energy Center	Nueces	May-18	PetCoke	660	

1.5 Generation Projects Undergoing Full Interconnection Studies with Confidentiality Waived by Developer

None

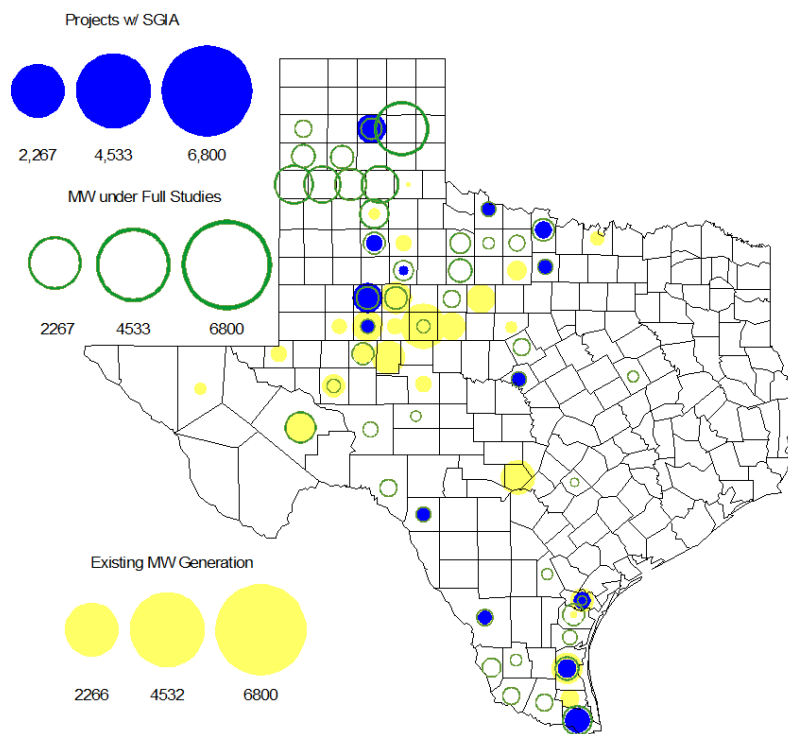
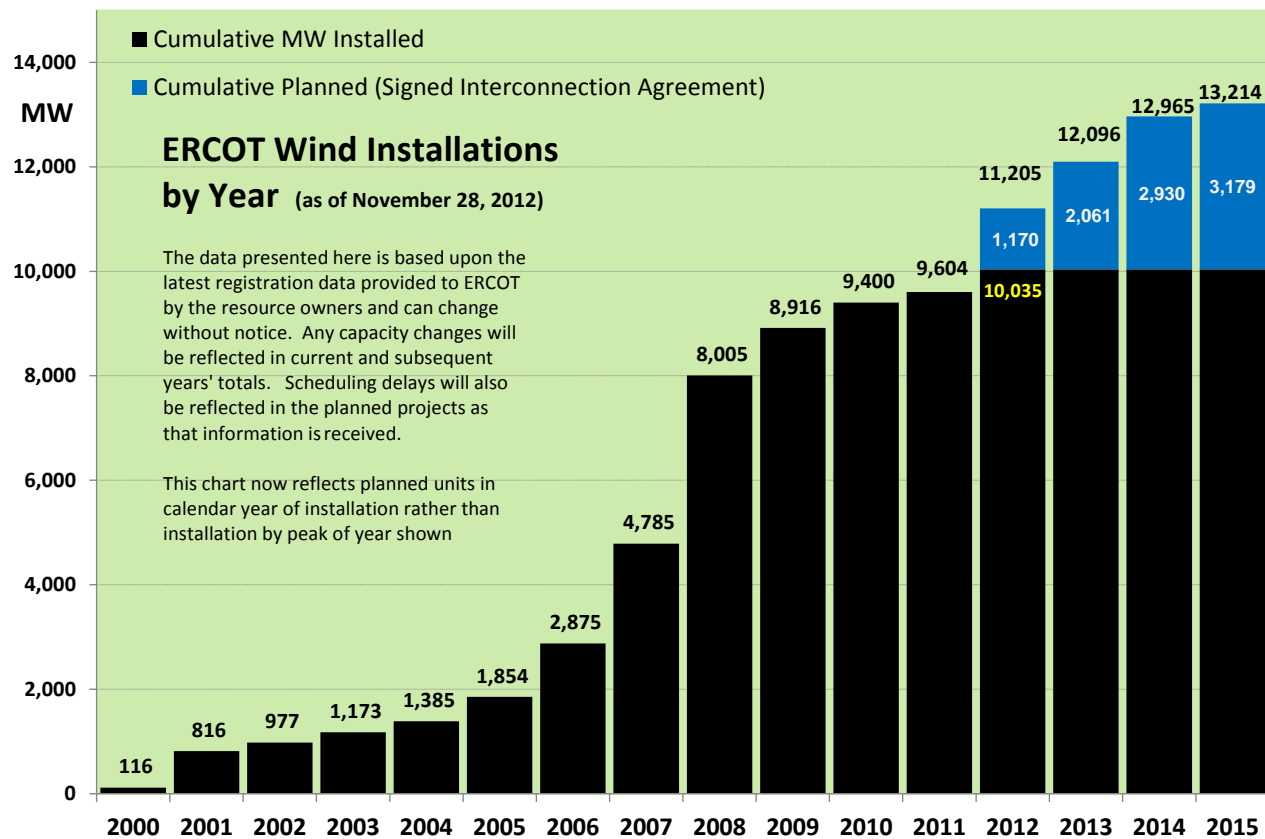
1.6 Generation Projects Undergoing Full Interconnection Studies

INR	County	Grid	COD	Fuel
13INR0040	Harris	0	Jan-13	Gas
13INR0010d	Parmer	200	Jan-13	Wind
13INR0010f	Parmer	200	Jan-13	Wind
11INR0094	Kent	100	Apr-13	Solar
13INR0058	Bexar	50	May-13	Solar
12INR0086	Fort Bend	89	May-13	Gas
13INR0057	Archer	65	Jun-13	Wind
13INR0025	Randall	150	Sep-13	Wind
13INR0059	Castro	499	Oct-13	Wind
14INR0030a1	Carson	322	Nov-13	Wind
12INR0002a	Briscoe	200	Dec-13	Wind
11INR0085	Nolan	106	Dec-13	Wind
12INR0054	Jones	200	Dec-13	Wind
13INR0007	Pecos	200	Dec-13	Wind
13INR0038	Swisher	300	Dec-13	Wind
13INR0052	Starr	200	Dec-13	Wind
13INR0056	Scurry	366	Dec-13	Wind
11INR0057	Cameron	165	Dec-13	Wind
12INR0068	Jim Hogg	80	Dec-13	Wind
12INR0088	Crosby	201	Dec-13	Wind
13INR0006	Gray	750	Jan-14	Wind
14INR0013	Cameron	103	Jan-14	Wind
12INR0084	Randall	242	Jan-14	Wind
12INR0060	Schleicher	58	Apr-14	Wind
14INR0027	Guadalupe	471	May-14	Gas
08INR0019b	Gray	250	Jun-14	Wind
14INR0011	Swisher	270	Jun-14	Gas
14INR0015	Harris	192	Jun-14	Gas
14INR0031	Harris		Jun-14	Gas
14INR0025	Floyd	500	Jul-14	Wind
12INR0042b	Deaf Smith	135	Sep-14	Wind
13INR0031	Travis	30	Oct-14	Solar
12INR0002b	Briscoe	200	Dec-14	Wind
11INR0082A	Val Verde	50	Dec-14	Wind
14INR0009	Kent	248	Dec-14	Wind
10INR0085	Ector	40	Dec-14	Solar
14INR0023	Briscoe	361	Dec-14	Wind
11INR0079a	Clay	200	Dec-14	Wind
12INR0029	Swisher	500	Dec-14	Wind
13INR0010c	Parmer	200	Jan-15	Wind
12INR0057	Ector	40	Apr-15	Solar
15INR0014	Matagorda	280	Oct-15	Gas
12INR0002c	Briscoe	350	Dec-15	Wind
15INR0015	Pecos	140	Dec-15	Solar
12INR0018	Gray	500	Dec-15	Wind
16INR0003	Brazoria	11	Jun-16	Gas
14INR0003	Nolan	850	Jun-19	Coal

INR	County	Grid	COD	Fuel
13INR0010a	Parmer	200	Jan-13	Wind
13INR0010e	Parmer	200	Jan-13	Wind
13INR0045	Castro	288	Apr-13	Wind
13INR0020a	Glasscock	200	May-13	Wind
10INR0089	Harris	40	May-13	Storage
12INR0045	Kleberg	135	Jun-13	Wind
13INR0049	Harris	352	Jul-13	Gas
13INR0046	Limestone	71	Sep-13	Wind
13INR0028	Hale	392	Nov-13	Gas
14INR0030a2	Carson	322	Nov-13	Wind
11INR0062	Nueces	178	Dec-13	Wind
13INR0026	Oldham	201	Dec-13	Wind
12INR0059	Pecos	50	Dec-13	Solar
13INR0036	Hidalgo	200	Dec-13	Wind
13INR0050	Comanche	200	Dec-13	Wind
13INR0055	Zapata	250	Dec-13	Wind
12INR0079	Kenedy	200	Dec-13	Wind
11INR0093	San Patricio	41	Dec-13	Wind
13INR0048	Oldham	161	Dec-13	Wind
14INR0024	Kinney	42	Dec-13	Solar
12INR0055	Baylor	40	Jan-14	Wind
14INR0014	Val Verde	100	Jan-14	Solar
13INR0010b	Parmer	200	Jan-14	Wind
13INR0020b	Glasscock	150	May-14	Wind
08INR0019a	Gray	250	Jun-14	Wind
08INR0019c	Gray	250	Jun-14	Wind
14INR0012	Gray	401	Jun-14	Wind
14INR0016	Harris	190	Jun-14	Gas
12INR0085	Stonewall	24	Jul-14	Wind
12INR0042a	Deaf Smith	265	Sep-14	Wind
12INR0070	Knox	300	Oct-14	Wind
09INR0034	Coryell	200	Oct-14	Wind
11INR0081	Live Oak	72	Dec-14	Wind
11INR0082B	Val Verde	150	Dec-14	Wind
12INR0071	Caldwell	30	Dec-14	Wind
14INR0020	Floyd	150	Dec-14	Wind
13INR0054	Bexar		Dec-14	Gas
08INR0031	Childress	120	Dec-14	Wind
15INR0021	Starr	200	Dec-14	Wind
10INR0009	Castro	300	Mar-15	Wind
15INR0013	Anderson	324	Oct-15	Gas
11INR0065	Nueces	350	Oct-15	Wind
14INR0018	Nolan	35	Dec-15	Solar
13INR0032	Andrews	30	Dec-15	Solar
16INR0005	Cameron	871	Apr-16	Gas
11INR0040	freestone	640	Mar-18	Gas

Note: Projects that are classified as “Cancelled” or “Suspended” are excluded from this table.

1.7 Wind Generation Capacity Installed by Year



2. Regional Planning Group Project Reviews

- AEPSC has submitted the Airline/North Padre Island Area Improvements project. This project is submitted as a revision to the Barney Davis to Laguna 138 kV line (AEPSC Corpus Christi Improvements Project) that was endorsed by ERCOT in November 2009. This is a Tier 1 project that is estimated to cost approximately \$58.1 million. This project is currently under ERCOT independent review.
- CPS Energy has submitted the TCC Transmission project to support load growth on the west side of San Antonio. The project is Tier 2 project estimated to cost \$10.9 million. This project is currently under ERCOT independent review.
- Sharyland has submitted the Atlas-Driver Load Integration project, this is a Tier 2 project that is estimated to cost approximately \$15.4 million. This project is currently under ERCOT independent review.
- American Electric Power Service Corporation (AEPSC) has submitted the Sinton-Beeville-Kenedy Area Improvements project to accommodate load additions due to Eagle Ford Shale development in South Texas. This is a Tier 1 project that is estimated to cost \$89.2 million. This project is currently under ERCOT independent review.
- LCRA TSC, Guadalupe Valley Electric Cooperative (GVEC), American Electric Power (AEP), and South Texas Electric Cooperative (STEC) have jointly submitted the Kenedy Switch to Nixon to Seguin Line Upgrade. This is a Tier 1 project that is estimated to cost approximately \$55.3 million. This project is currently under ERCOT independent review.

3. Planning Model Activities

- Data Set B work began on August 1, 2012 with a Topology Processor case extracted from NMMS with a build date of January 1, 2013. Process is underway with creation of Pass 1 cases on Aug 31, 2012.
- The short term calendar of major planning model events follows:
 - **Nov 16, 2012** **Posted Sept TPIT update to 12 DSA and 13 DSA cases.**
 - **Nov 14, 2012** **Begin Contingency database update for 13 DSA and DSB cases.**
 - **Nov 19, 2012** **Begin Transmission Loss Factor Calculations**
 - **Dec 12, 2012** **Begin Planning Data Dictionary Update**
 - **Dec 19, 2012** **Post Contingency database update for 13 DSA and DSB cases**
 - **Dec 21, 2012** **Complete Transmission Loss Factor Calculations**
 - **Jan 11, 2013** **Complete Planning Data Dictionary Update**
- Status update on SCR760, Changes Needed for Information Model Manager and Topology Processor for Planning Models, which was approved by the ERCOT Board in March 2011.
 - Bundle 1 (Items 3, 7 and 8): In Production.
 - Bundle 2 (Items 2a, 4, 9): In Production.
 - Bundle 3 (Item 5, 2b, 2c): In Production
 - Bundle 4 (Items 1, 6): Requirements agreed to by ERCOT and Vendor. Vendor proposal approved by ERCOT. SOW amendment underway. Vendor has begun work. Expect to receive first release in April 2013.

SCR Sub Part	SCR Description	Status
SCR760-1	Upgrade to PSS/E v32	Production
SCR760-2	Distribution Capacitor banks	Production
SCR760-3	Zero Impedance Line Ratings	Production
SCR760-4	Associate Loads and Capacitor banks with the correct CNG	Production
SCR760-5	Additional Transformer Data for Planning	Production
SCR760-6	FACTS Devices	Planning
SCR760-7	Assign valid PSSE IDs to Breakers/ Switches/ Series Devices	Production
SCR760-8	Phase shift of Autos for short circuit studies	Production
SCR760-9	Multisection Line Grouping	Production

Table 1: In the following table:

1. Red will be used to show status of Not Submitted, meaning that the SCR sub part has not been submitted to Siemens as a Service Request.
2. Yellow will indicate that the SCR sub part has been submitted. The color will remain yellow and the status will change in order to Submitted, Planning (Requirements, SOW, Code Writing), Release (Siemens produces first code to test), and Testing (code has completed internal test and is moving through release management).
3. Green will indicate that the code has been tested and installed on the machines that ERCOT uses to produce Topology Processor output for Planning and CRR.

4. Other Notable Activities

- All of the reliability projects for the 2012 Five-Year Transmission Plan have been identified and the results posted at the ERCOT POI. The ERCOT 5YTP team is current working on the draft 5YTP report for reliability analysis section and concurrently working on the economic analysis.