

To the Public Utility Commission of Texas

ERCOT Wholesale Electricity Market Monthly Report

Report Date: Tuesday, November 13, 2012

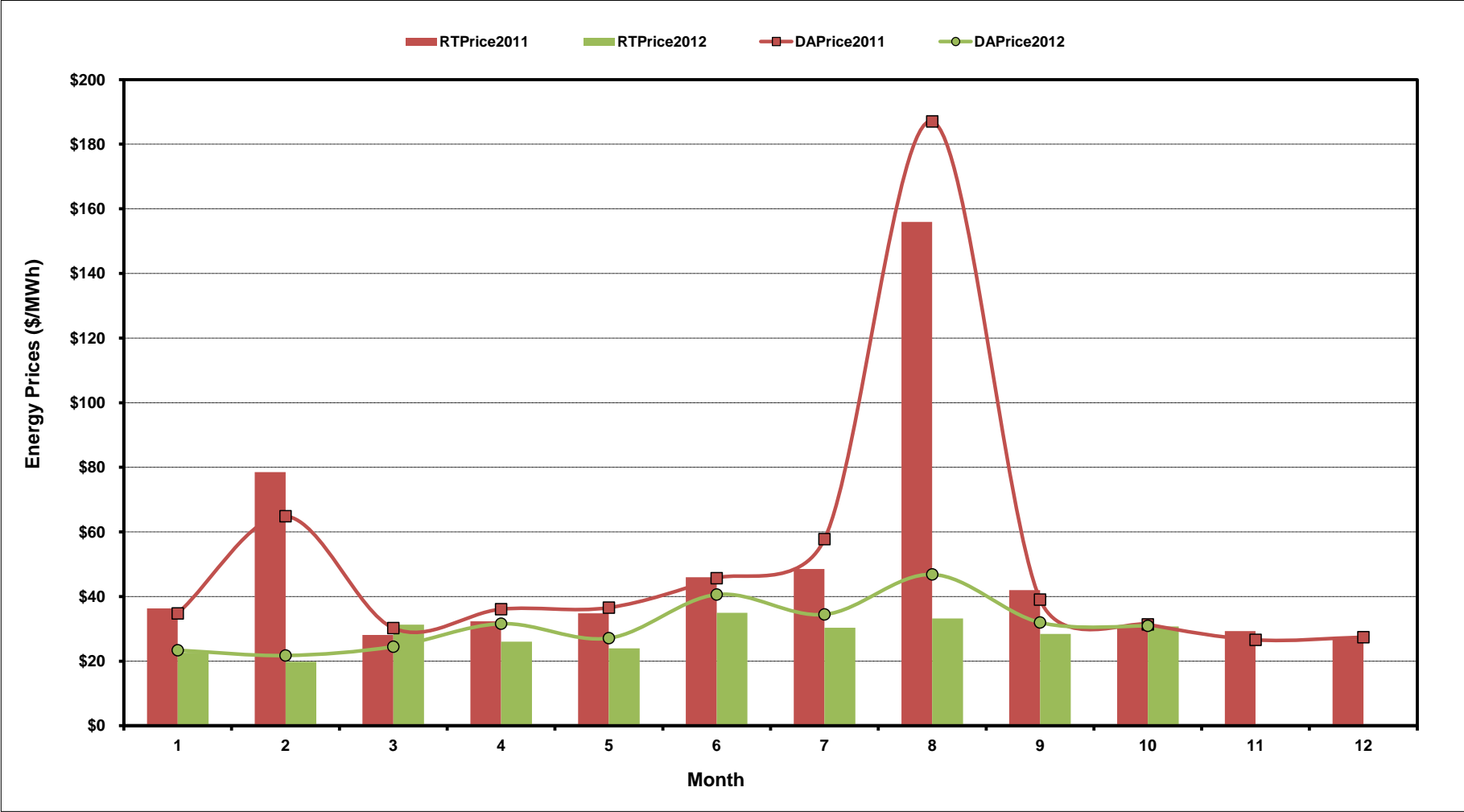
Report By: Potomac Economics, LTD
Independent Market Monitor

Contents

1	ERCOT-wide AVG Energy Prices DA vs. RT	chart
2	Load Zone Load Statistics	chart
3	Load Zone Energy Prices DA vs RT	chart
4	ERCOT-wide Implied Heat Rates DA vs RT	chart
5	Load Zone Implied Heat Rates DA vs RT	chart
6	Ancillary Services Required MW by Month	chart
7	Ancillary Services Required MW by Hour Ending	chart
8	Ancillary Services Prices by Month	chart
9	A/S Costs per MWh of Load by Month	chart
10	Ercot-wide Peaker Net Margin	chart
11	DA Load Forecast Errors by Hour Ending	chart
12	Average Wind Production by Hour Ending	chart
13	RT Constraint Rankings	
	- Top 10 Constraints by Congestion Rent	chart
	- Top 10 Constraints by Binding Frequency	chart
14	DA Constraint Rankings	
	- Top 10 Constraints by Congestion Rent	chart
	- Top 10 Constraints by Binding Frequency	chart
15	CRR Auction Prices Rankings	
	- Top 10 PTP Obligations	chart
	- Top 10 PTP Options	chart

ERCOT-Wide Average Energy Prices DA vs RT

(avg. DA & RT SPPs weighted by Real Time Settlement Loads)



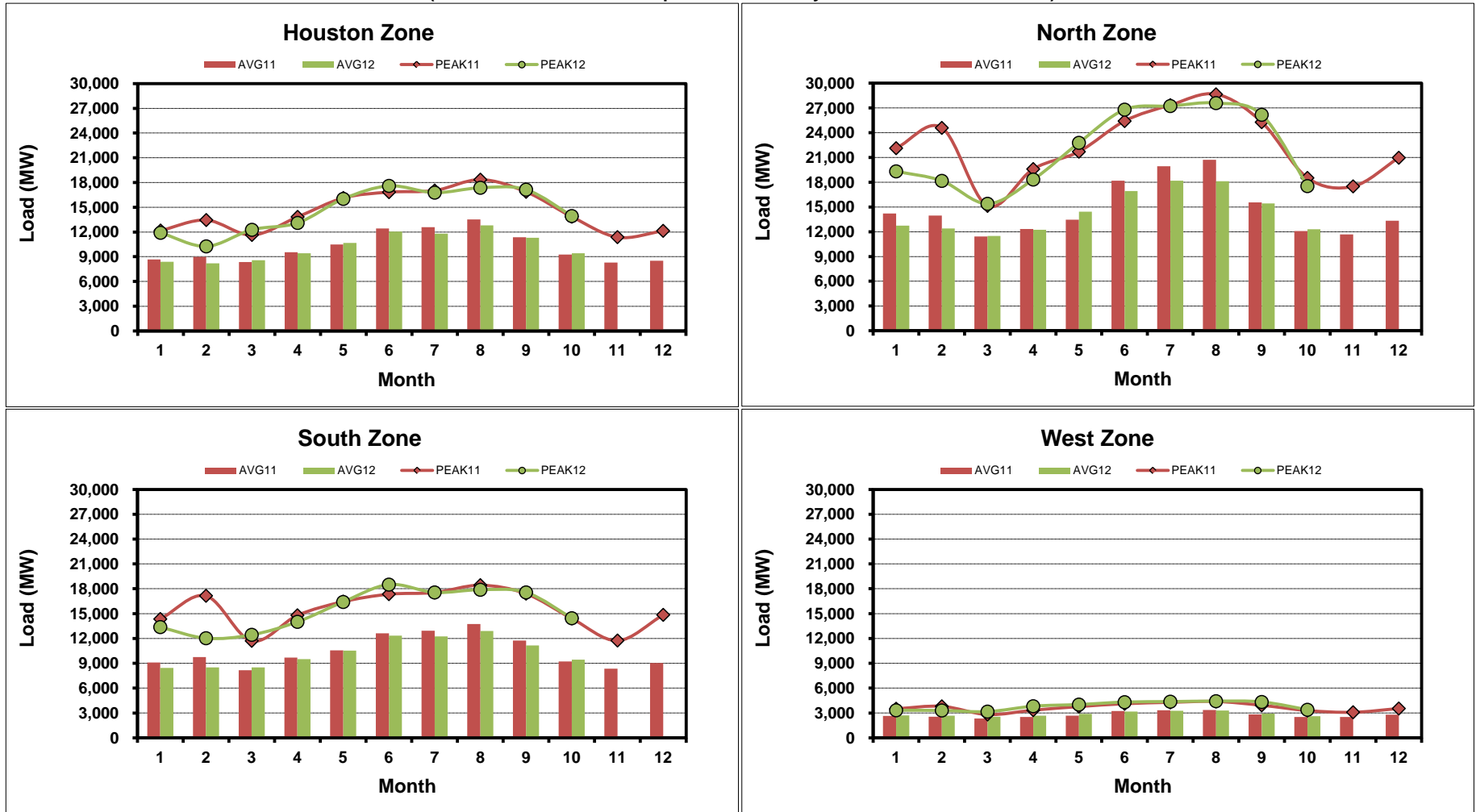
[Home <<](#)

[previous <<](#)

[next >>](#)

Load Zone Load Statistics

(Nodal load zone made comparable to zonal sytem Load Zone definitions*)



[Home <<](#)

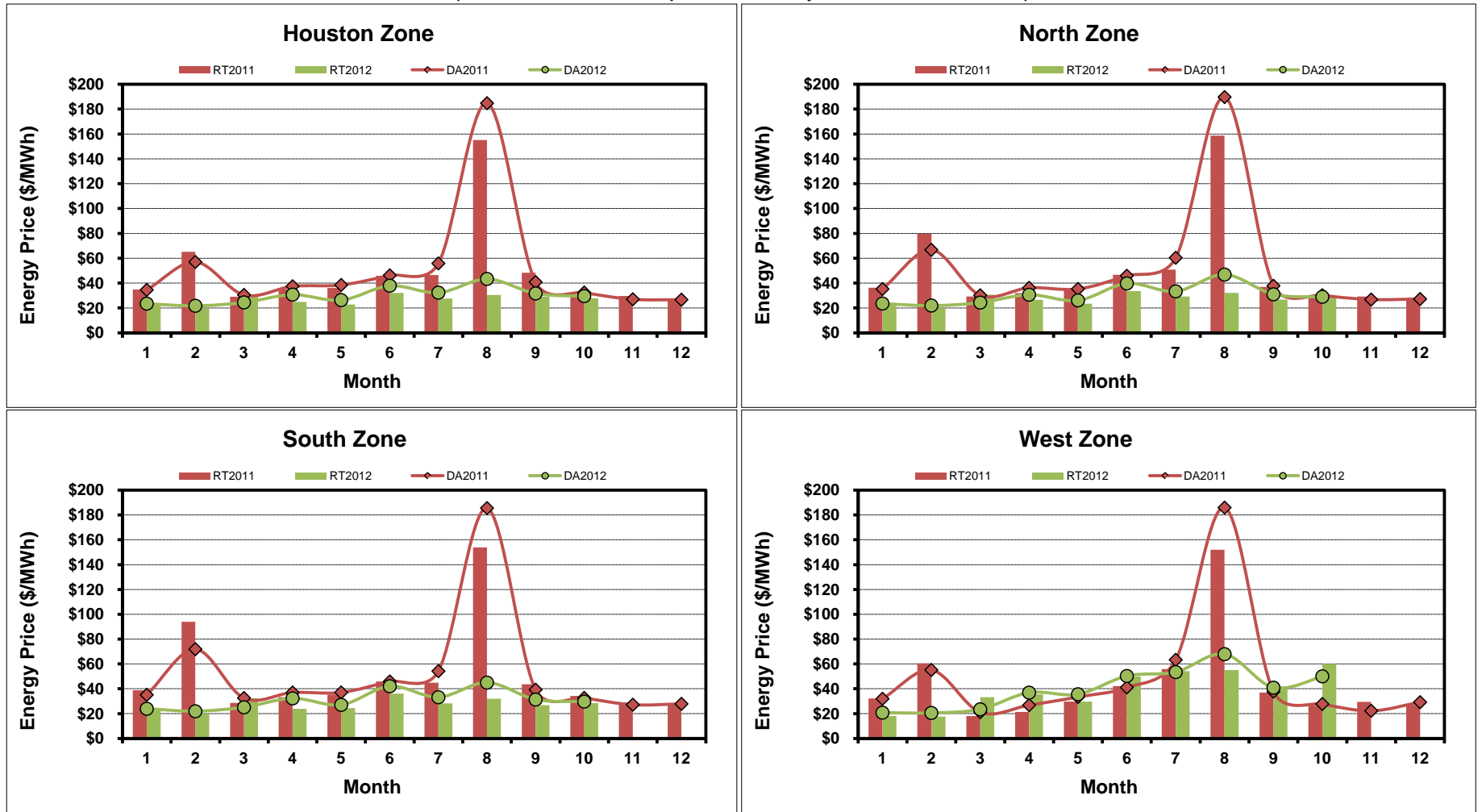
[previous <<](#)

[next >>](#)

Note: * Zonal load zone definition vs. Nodal comparable load zone definition: LZ_Houston=LZ_Houston; LZ_West=LZ_West; LZ_North=(LZ_North,LZ_RAYBN); LZ_South=(LZ_South,LZ_CPS,LZ_AEN,LZ_LCRA)

Load Zone Monthly Average Energy Price DA vs RT

(avg. DA & RT SPPs weighted by Real Time Settlement Loads)
 (Nodal load zone made comparable to zonal system Load Zone definitions*)



[Home <<](#)

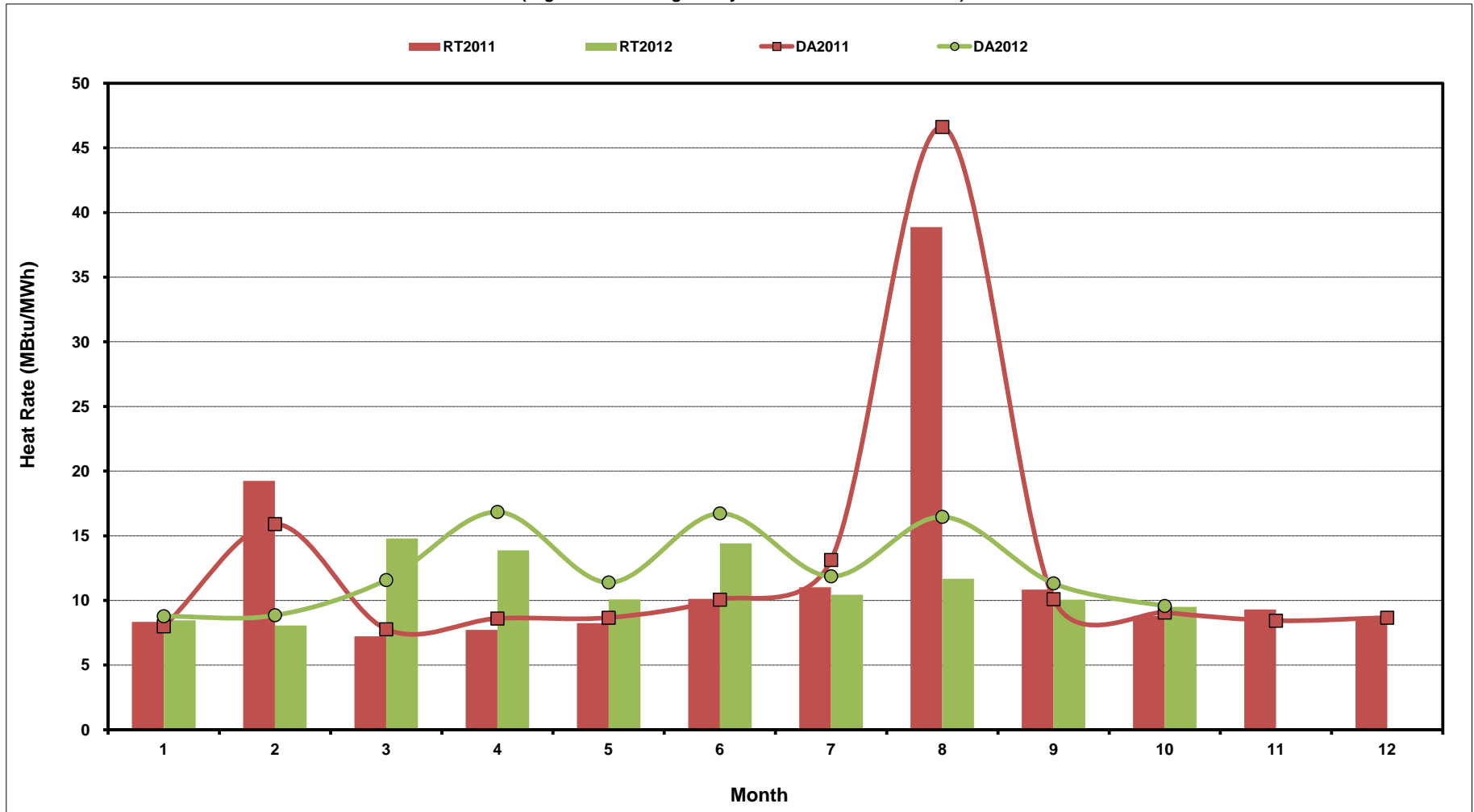
[previous <<](#)

[next >>](#)

Note: * Zonal load zone definition vs. Nodal comparable load zone definition: LZ_Houston=LZ_Houston; LZ_West=LZ_West; LZ_North=(LZ_North,LZ_RAYBN); LZ_South=(LZ_South,LZ_CPS,LZ_AEN,LZ_LCRA)

ERCOT-Wide Monthly Implied Heat Rate DA vs RT

(avg. heat rates weighted by Real Time Settlement Loads)



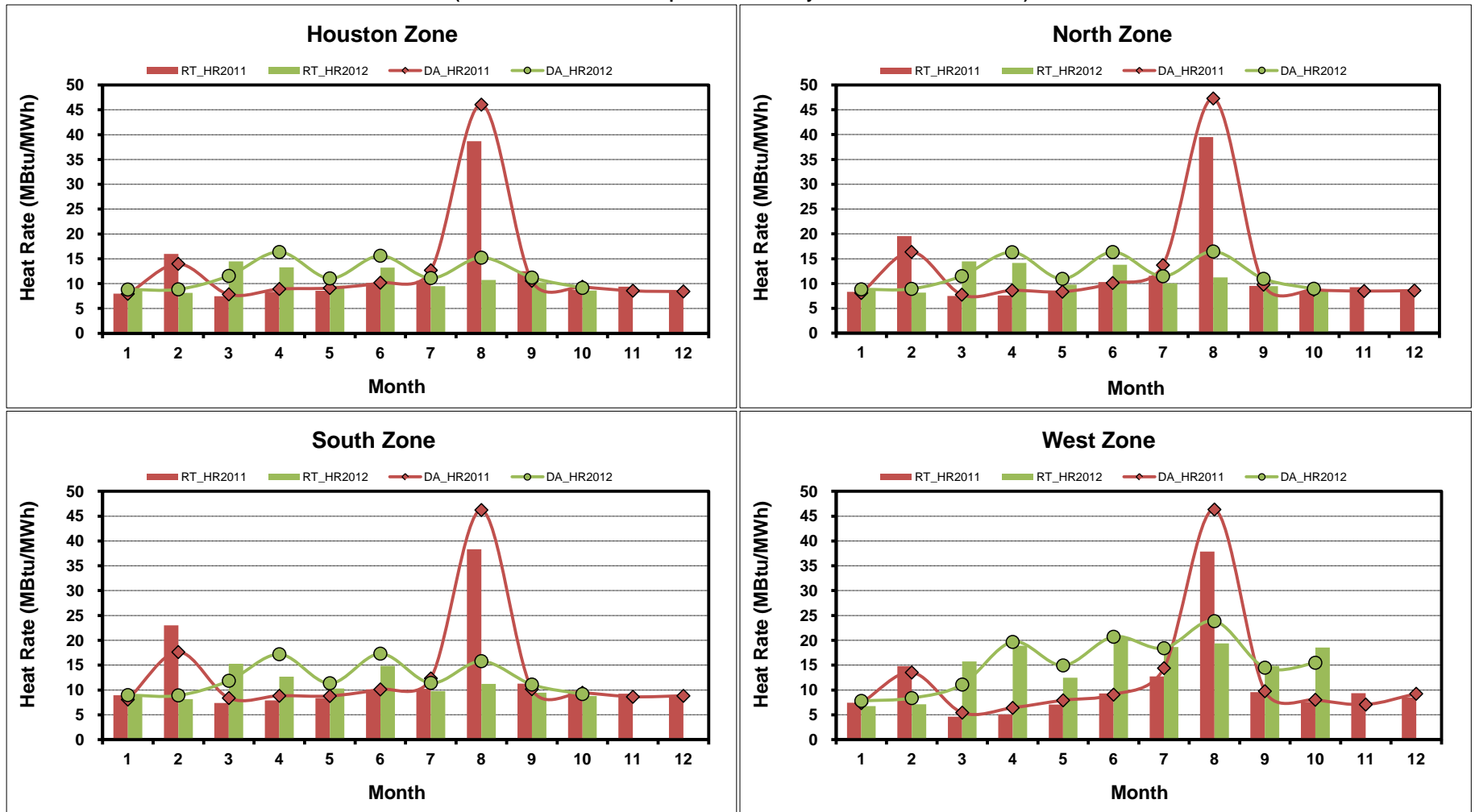
[Home <<](#)

[previous <<](#)

[next >>](#)

Load Zone Monthly Implied Heat Rate DA vs RT

(avg. heat rates weighted by Real Time Settlement Loads)
 (Nodal load zone made comparable to zonal system Load Zone definitions*)



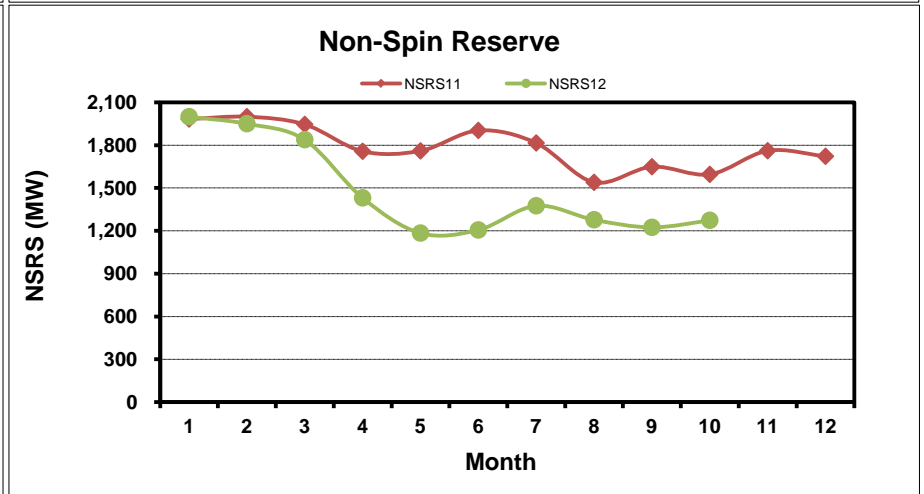
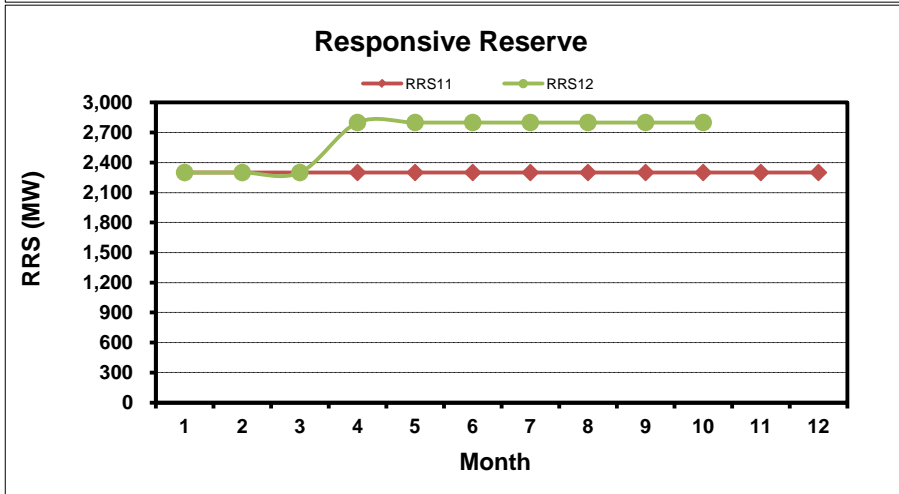
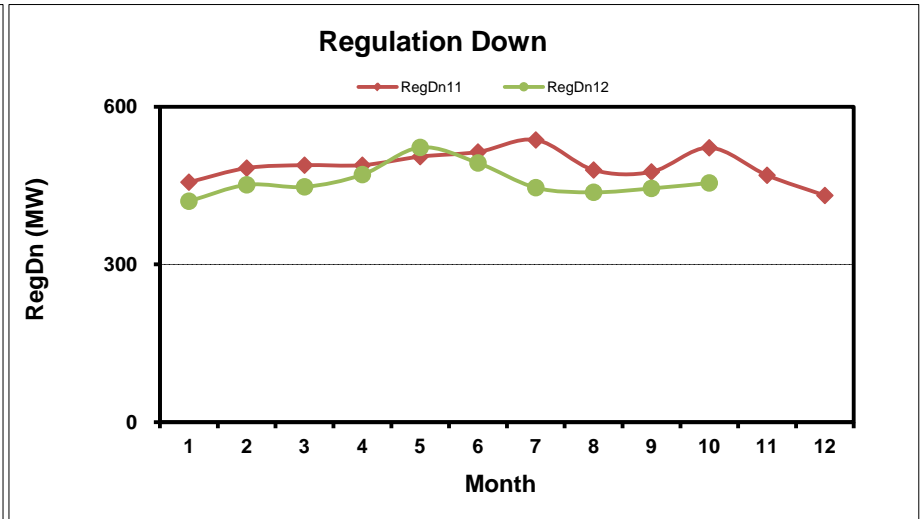
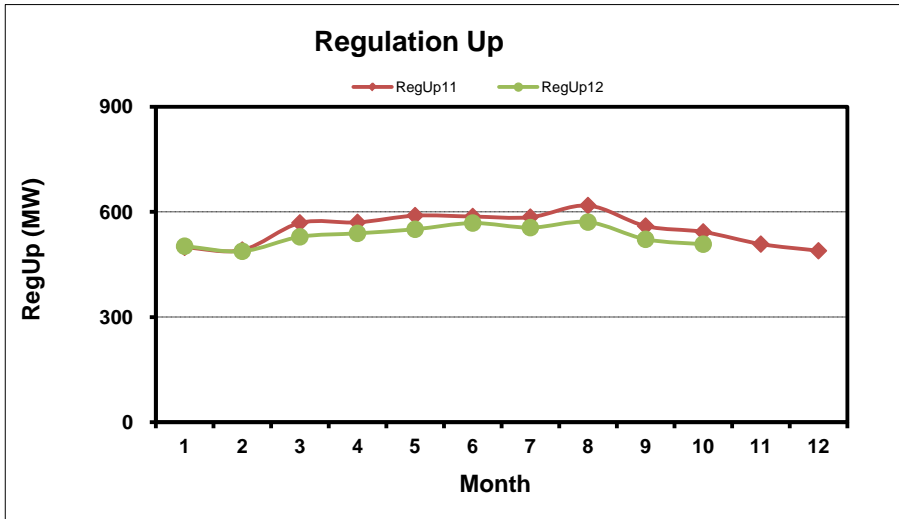
[Home <<](#)

[previous <<](#)

[next >>](#)

Note: * Zonal load zone definition vs. Nodal comparable load zone definition: LZ_Houston=LZ_Houston; LZ_West=LZ_West; LZ_North=(LZ_North,LZ_RAYBN); LZ_South=(LZ_South,LZ_CPS,LZ_AEN,LZ_LCRA)

Monthly Average of Ancillary Services Required MW

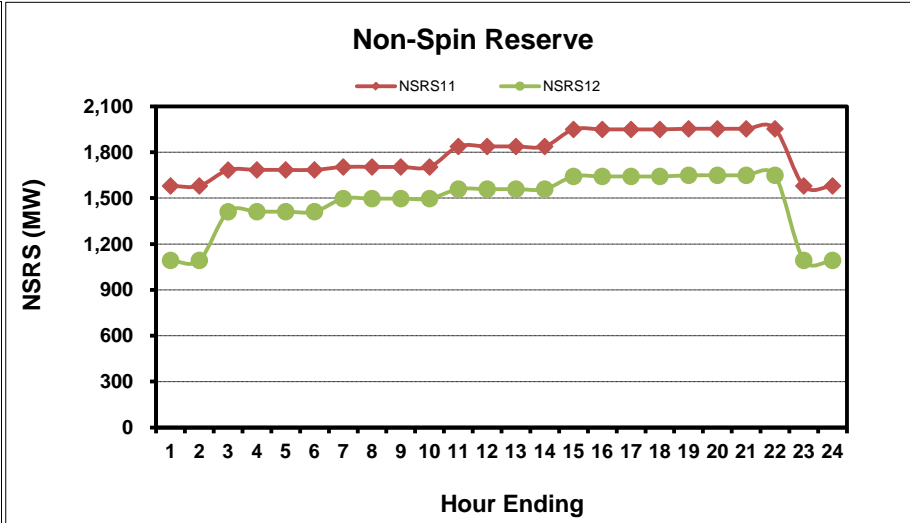
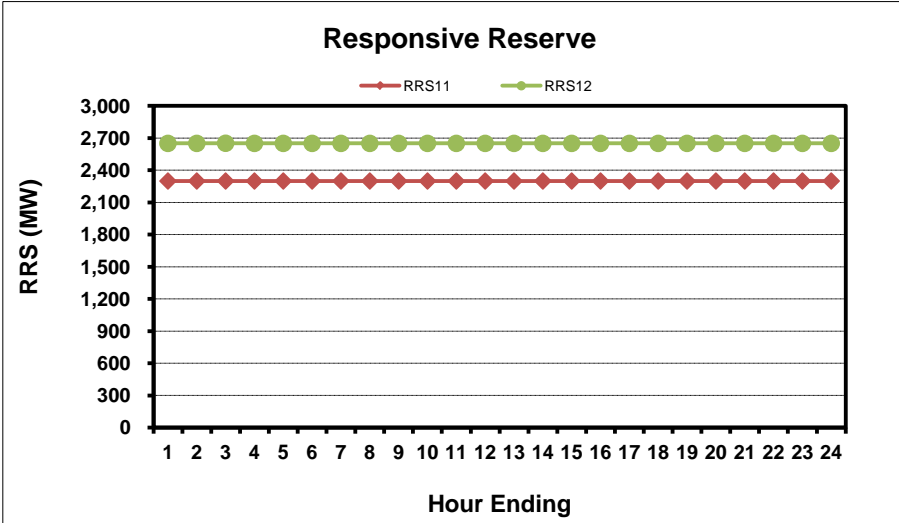
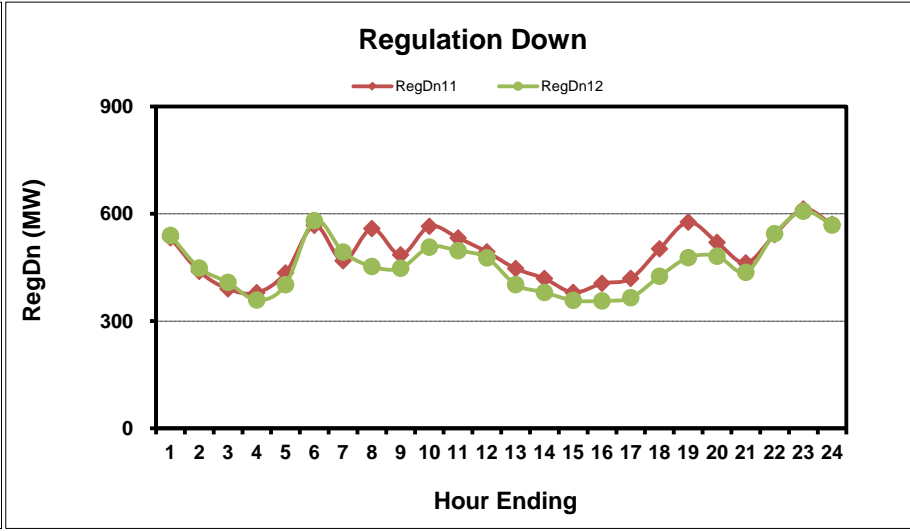
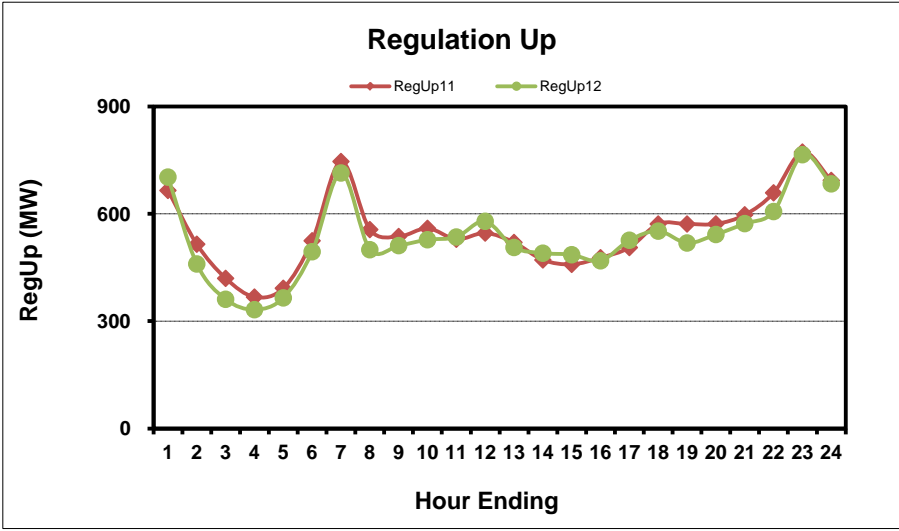


[Home <<](#)

[previous <<](#)

[next >>](#)

Hourly Average of Ancillary Services Required MW



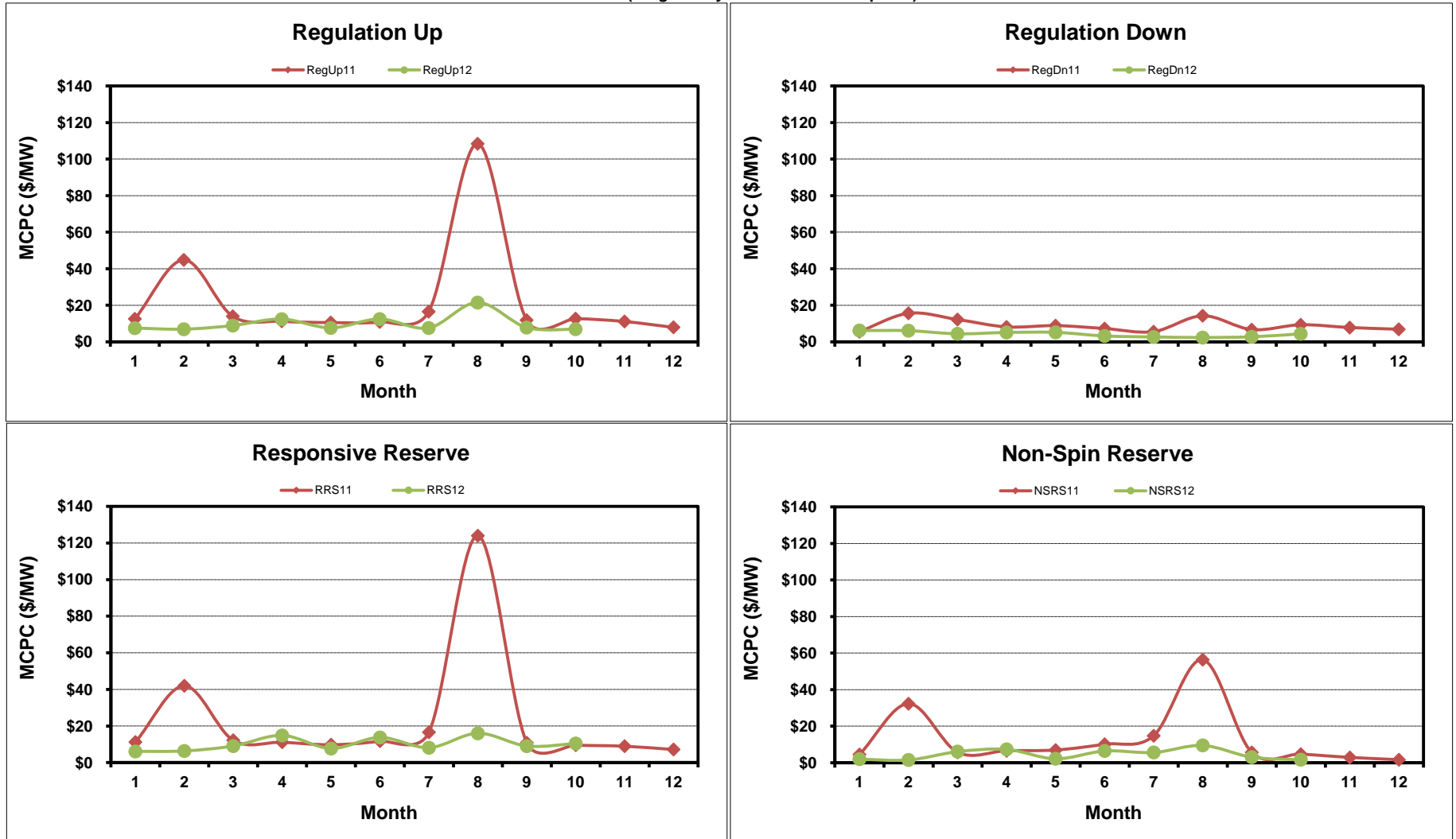
[Home <<](#)

[previous <<](#)

[next >>](#)

Monthly Average Ancillary Services Price

(weighted by A/S Quantities Required)

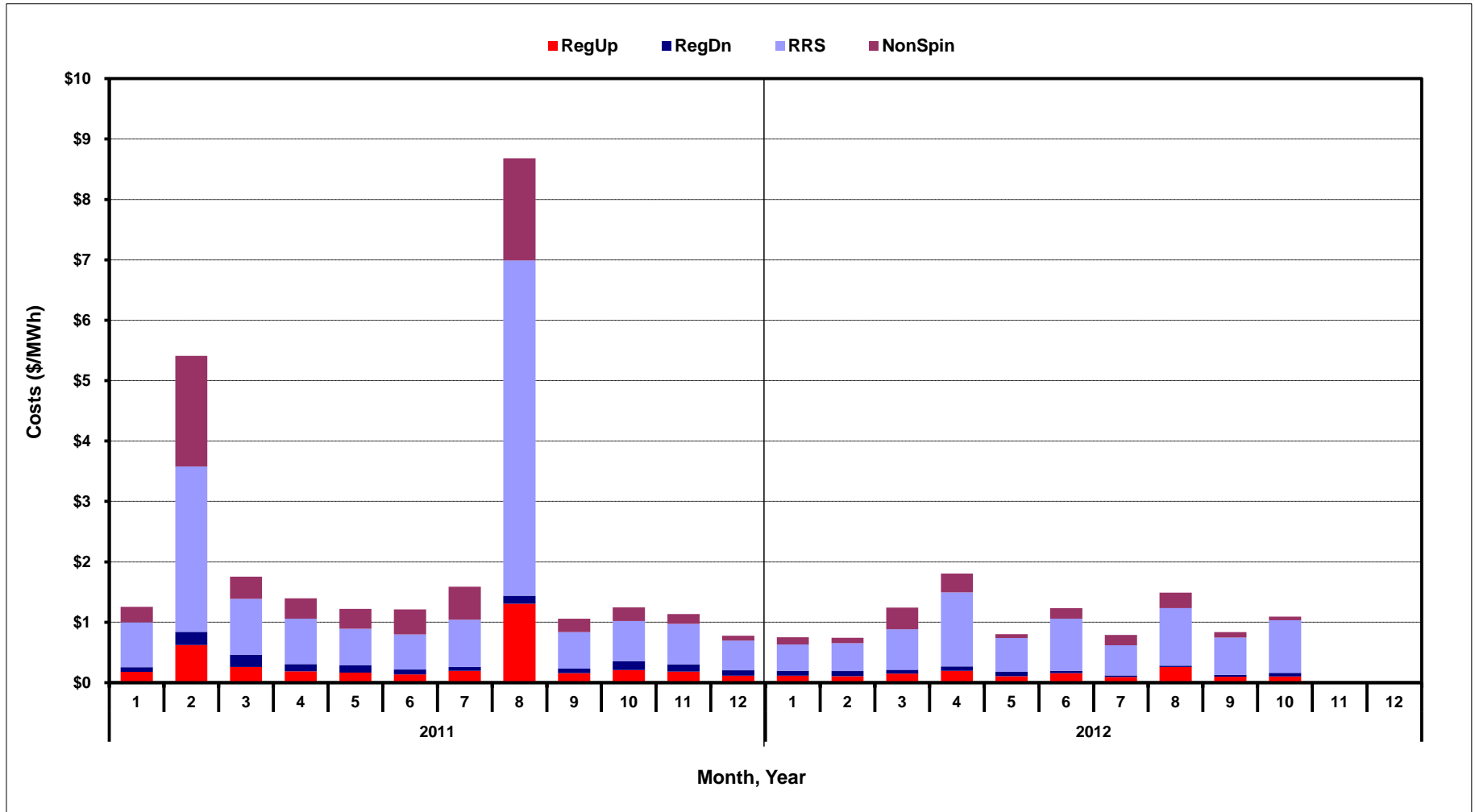


[Home <<](#)

[previous <<](#)

[next >>](#)

Monthly Average A/S Cost per MWh Load

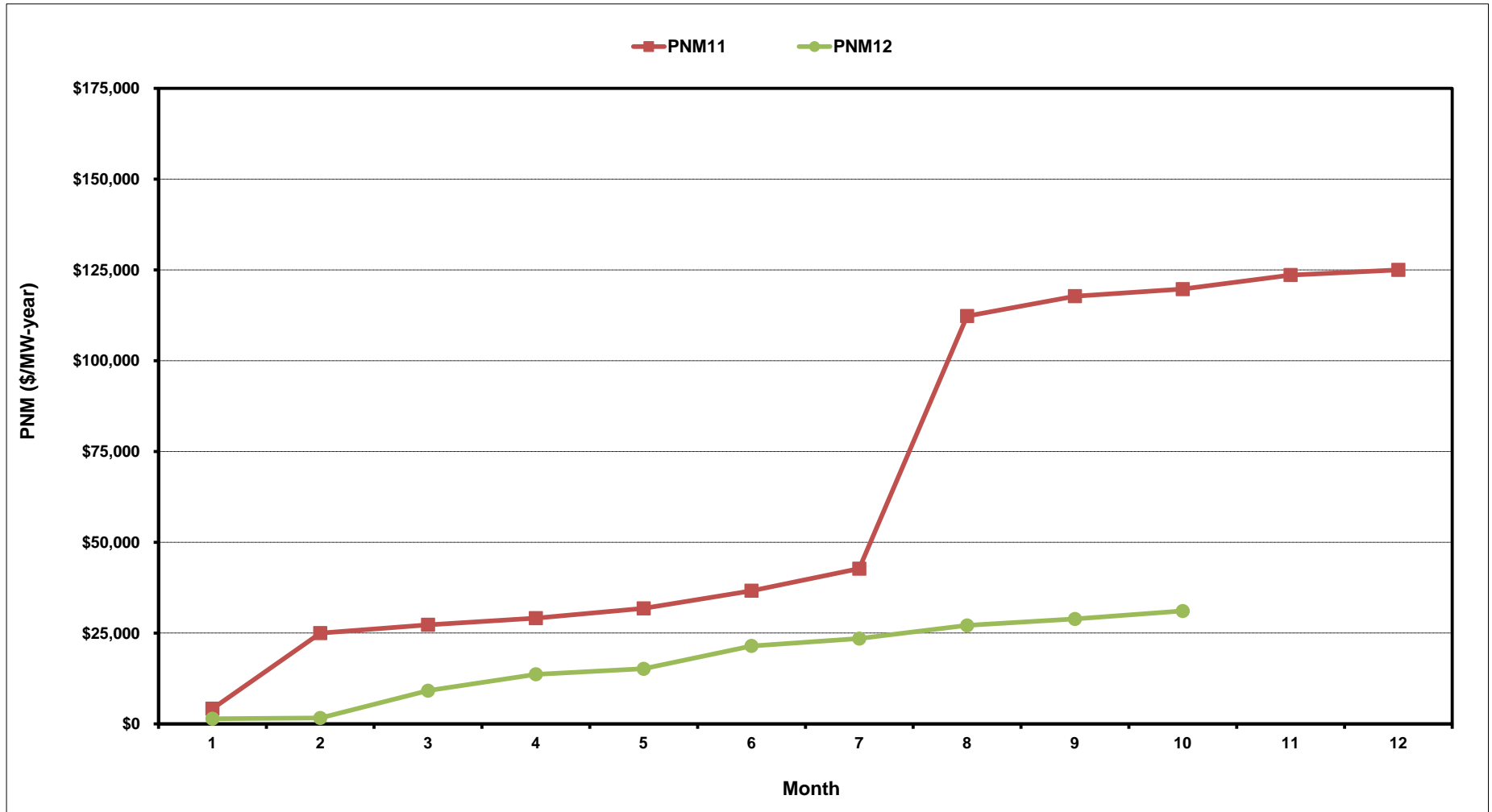


[Home <<](#)

[previous <<](#)

[next >>](#)

ERCOT-Wide Cumulative Peaker Net Margin

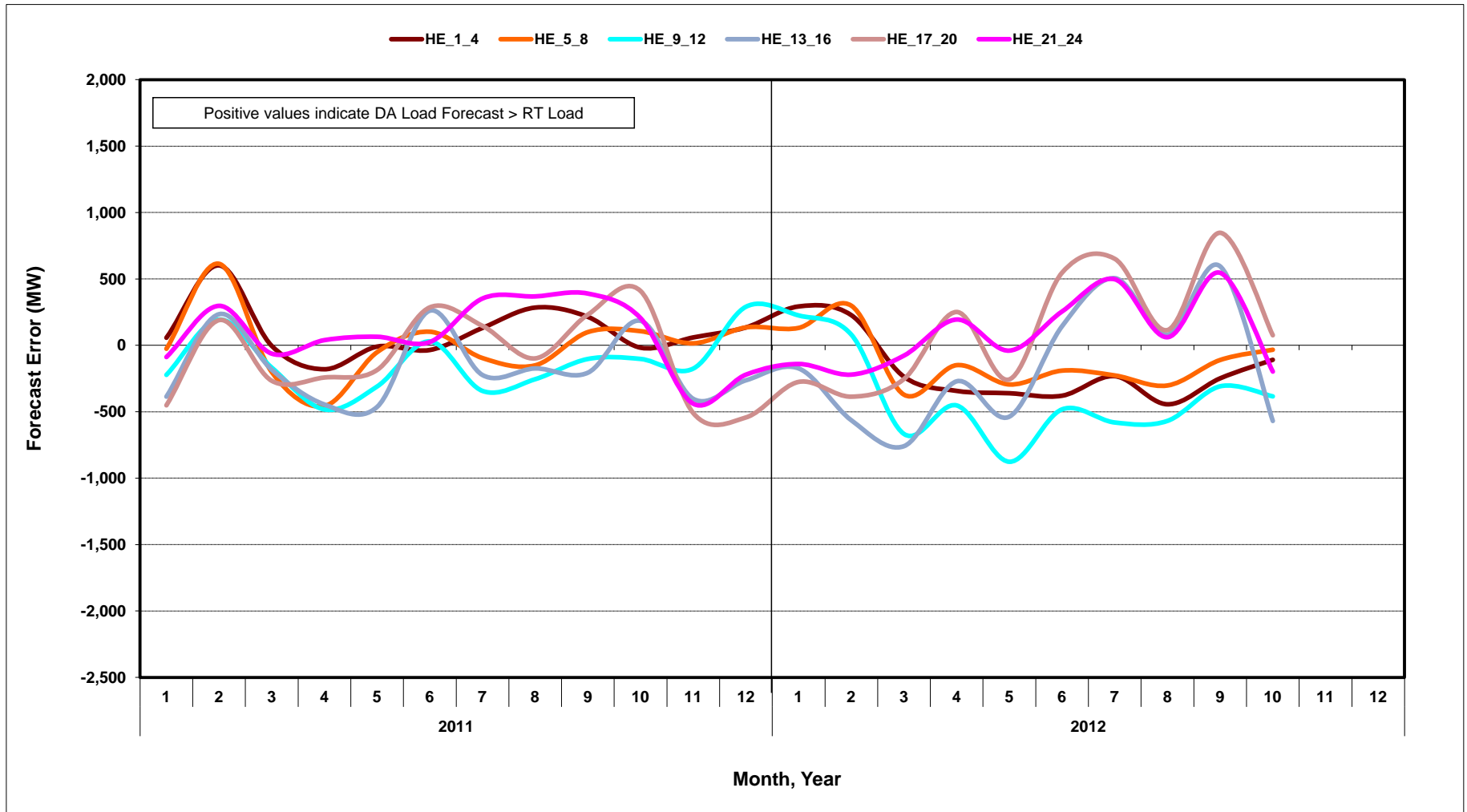


[Home <<](#)

[previous <<](#)

[next >>](#)

DA vs. RT Load Forecast Error by Hour Ending

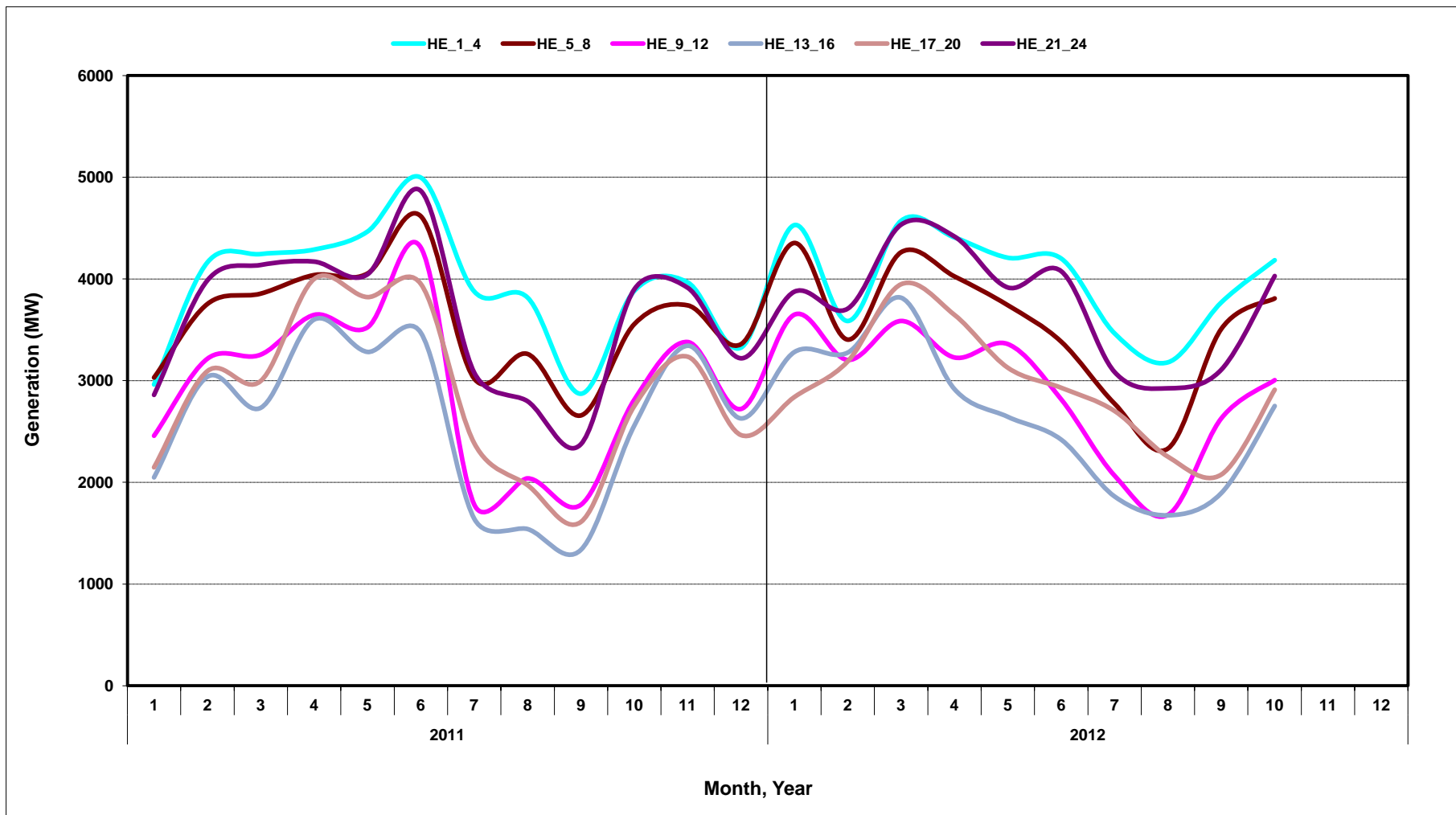


[Home <<](#)

[previous <<](#)

[next >>](#)

Monthly Average of Wind Generation by Hour Ending

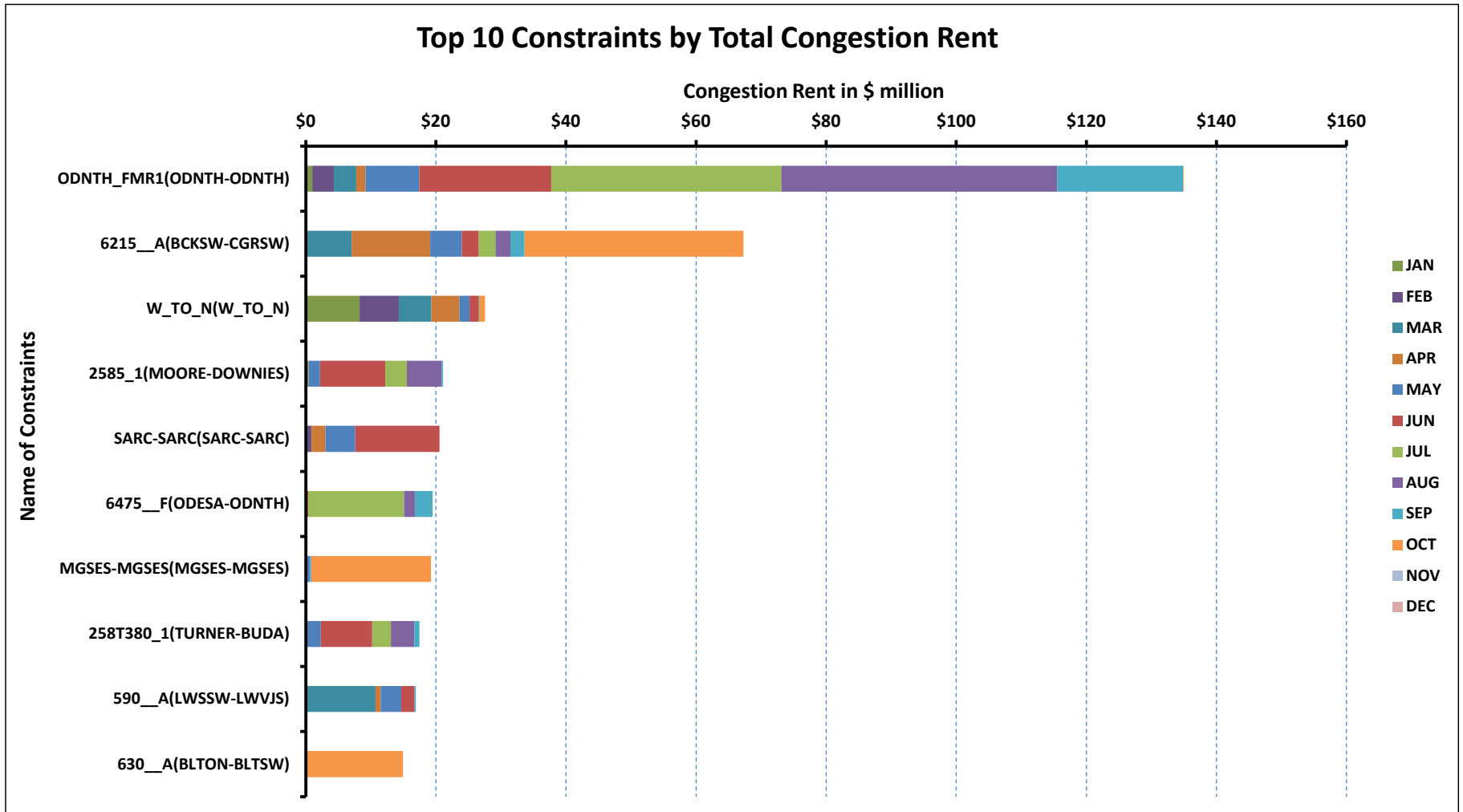


[Home <<](#)

[previous <<](#)

[next >>](#)

RT Congestion Constraint Rankings - 1

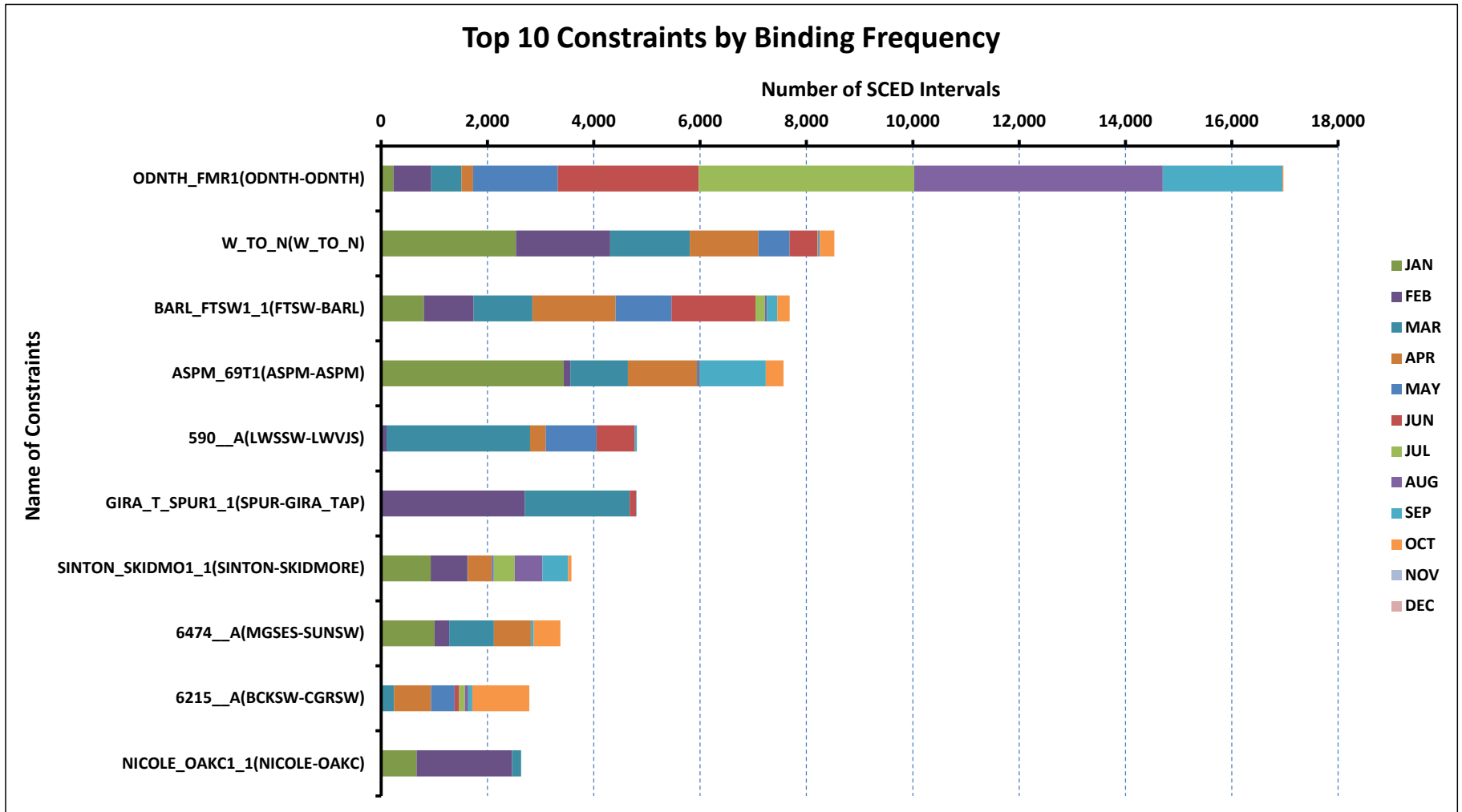


[Home <<](#)

[previous <<](#)

[next >>](#)

RT Congestion Constraint Rankings - 2



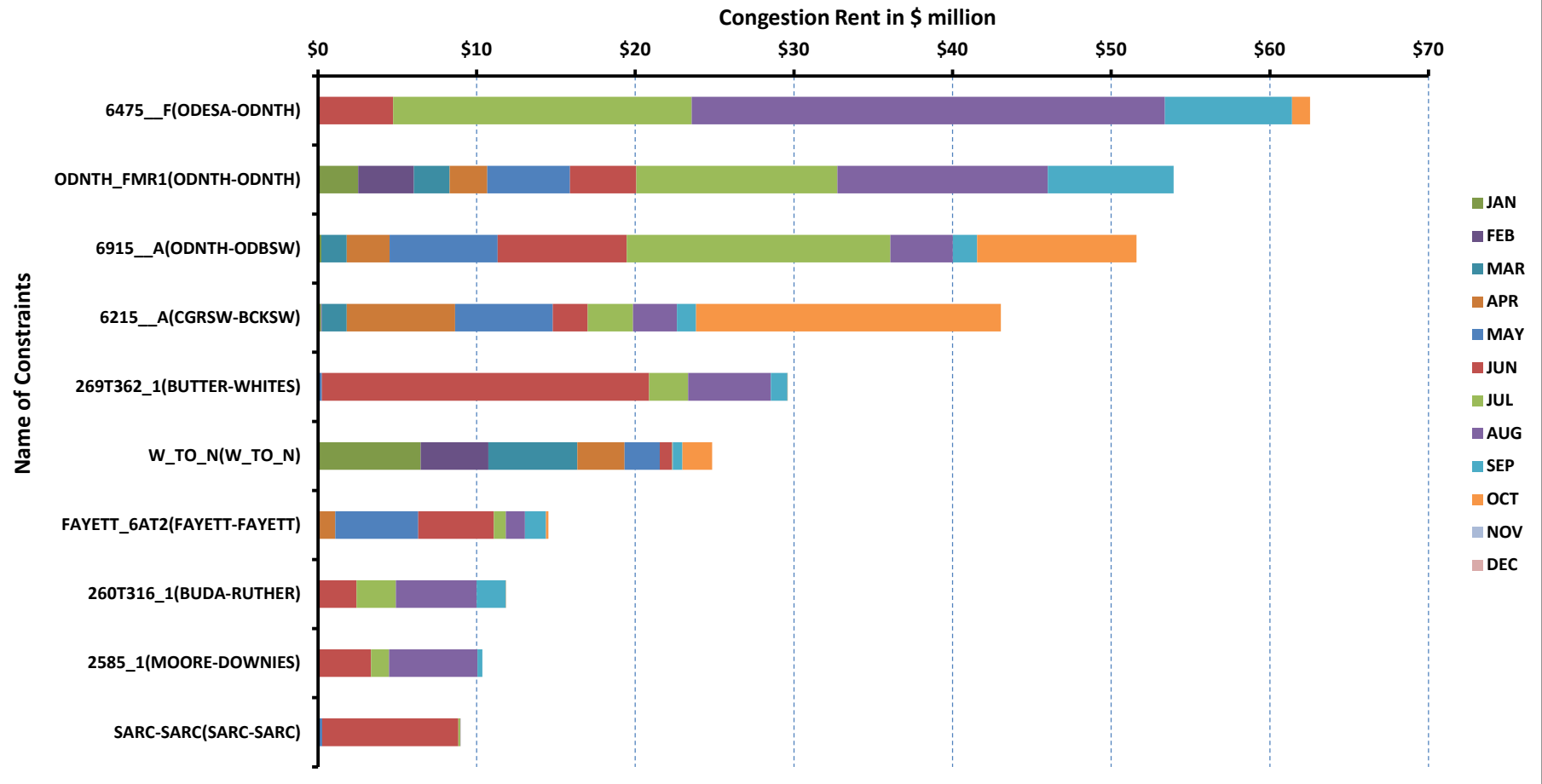
[Home <<](#)

[previous <<](#)

[next >>](#)

DA Congestion Constraint Rankings - 1

Top 10 Constraints by Total Congestion Rent

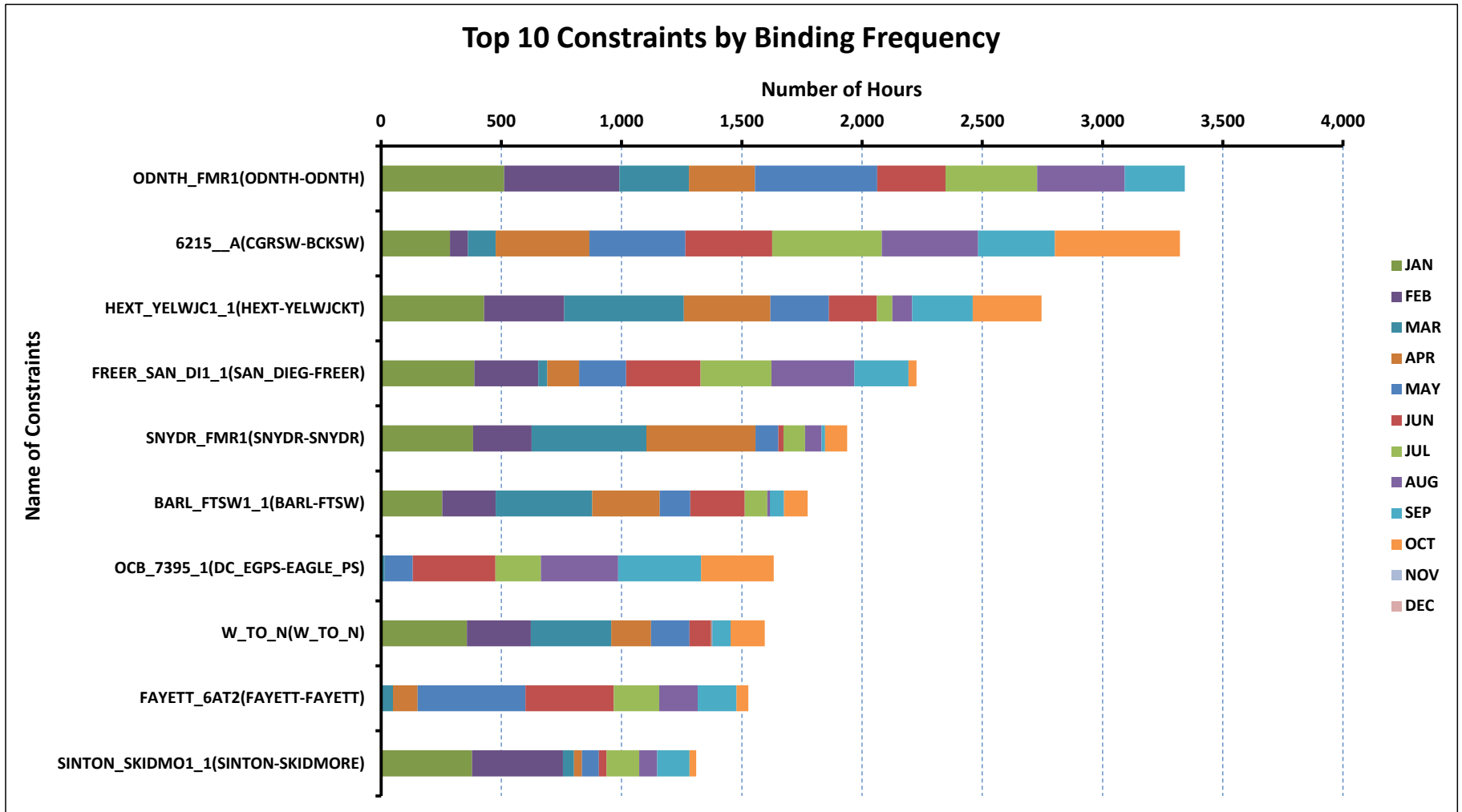


[Home <<](#)

[previous <<](#)

[next >>](#)

DA Congestion Constraint Rankings - 2

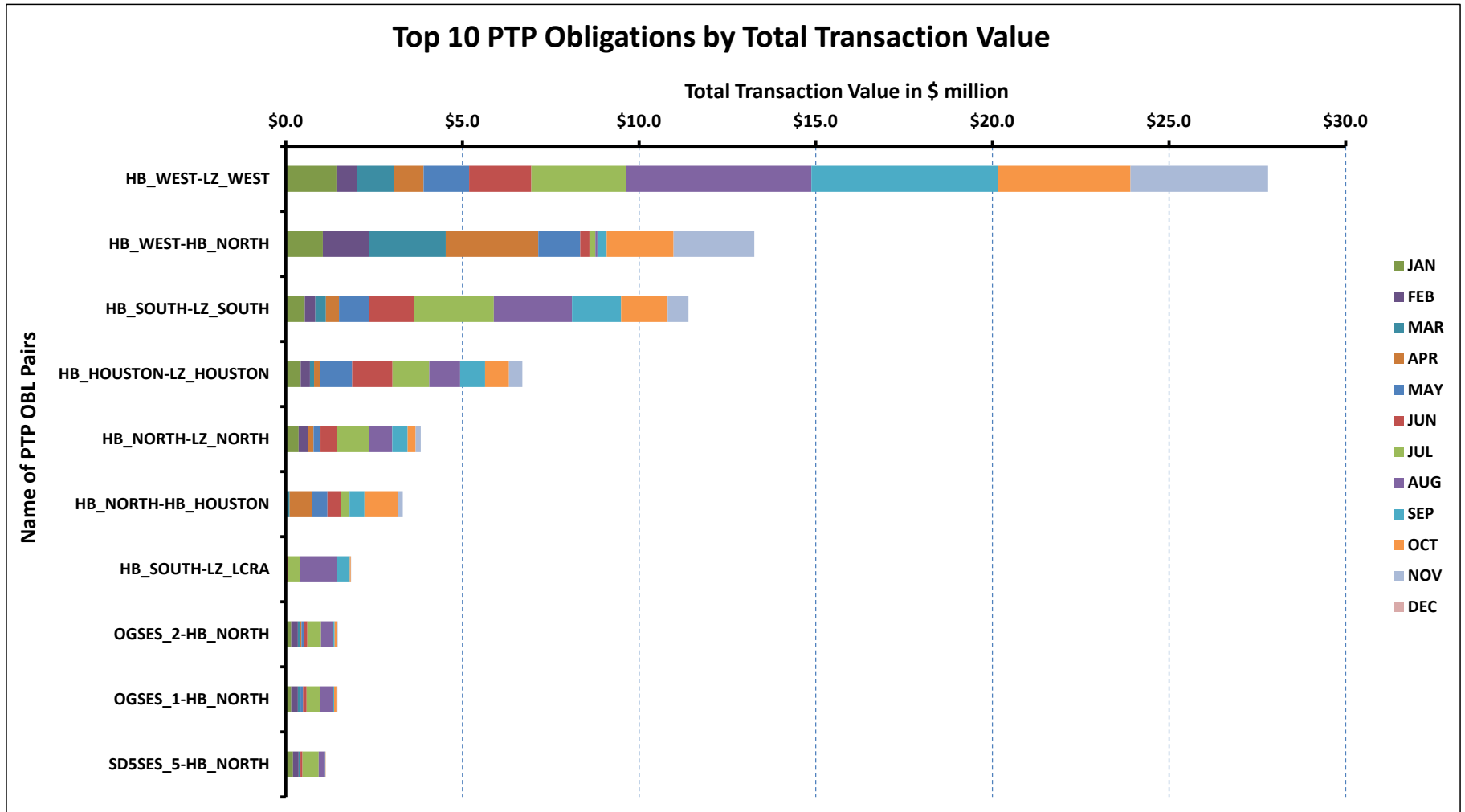


[Home <<](#)

[previous <<](#)

[next >>](#)

Top 10 CRR Pairs Ranked by Monthly Auction Values - 1

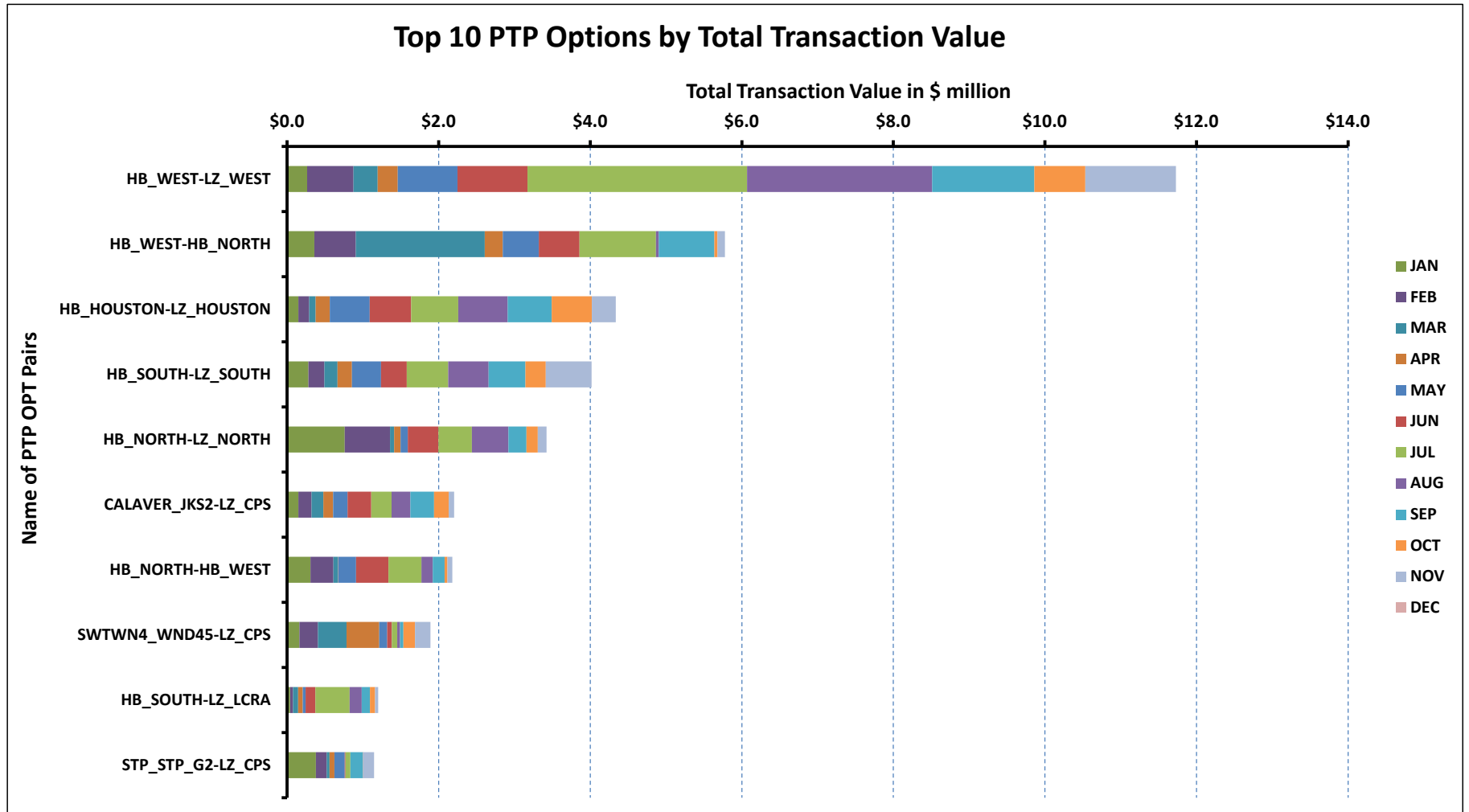


[Home <<](#)

[previous <<](#)

[next >>](#)

Top 10 CRR Pairs Ranked by Monthly Auction Values - 2



[Home <<](#)

[previous <<](#)