



ERCOT Monthly Operational Overview (**August 2012**)

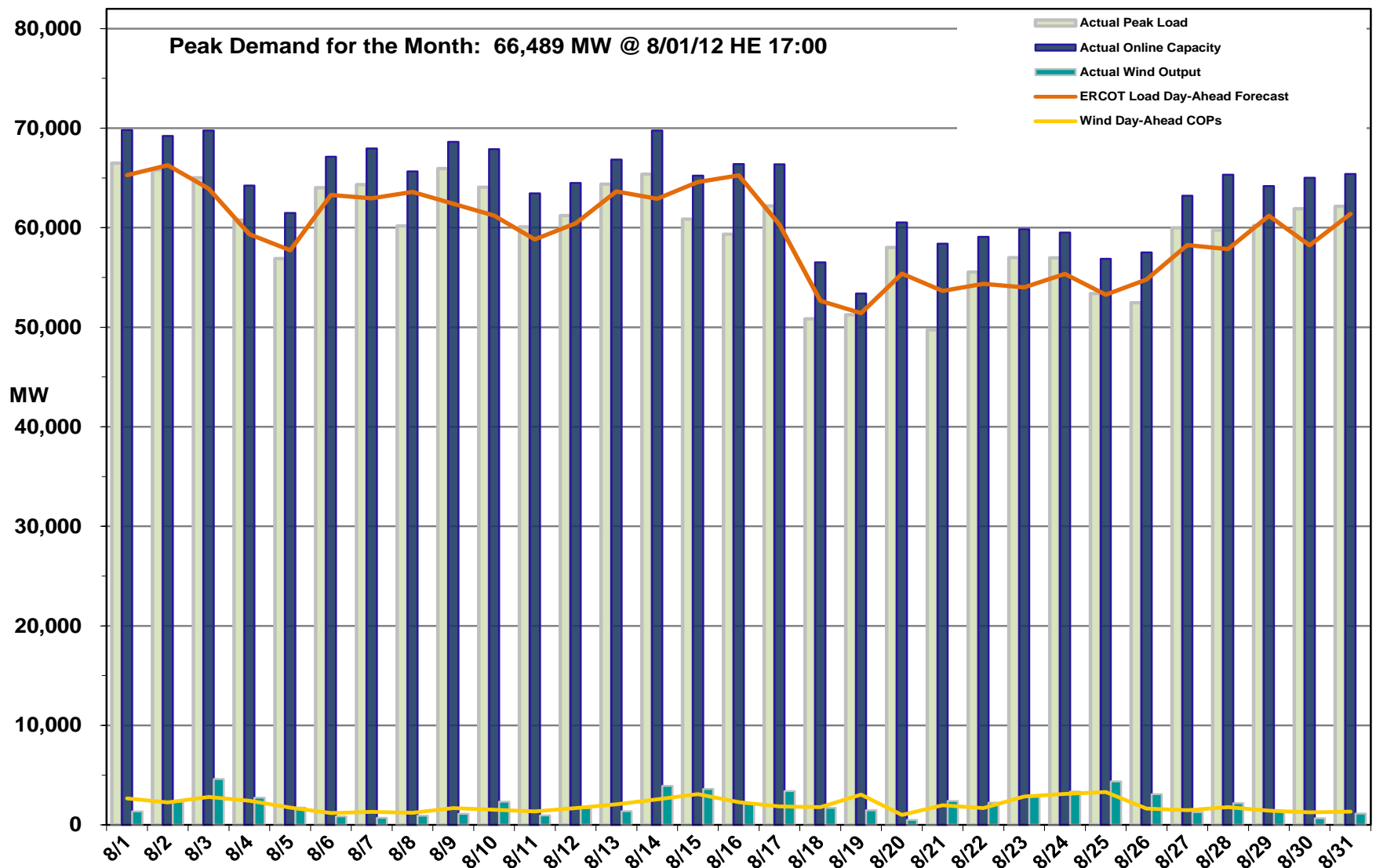
September 15, 2012



Grid Operations & Planning

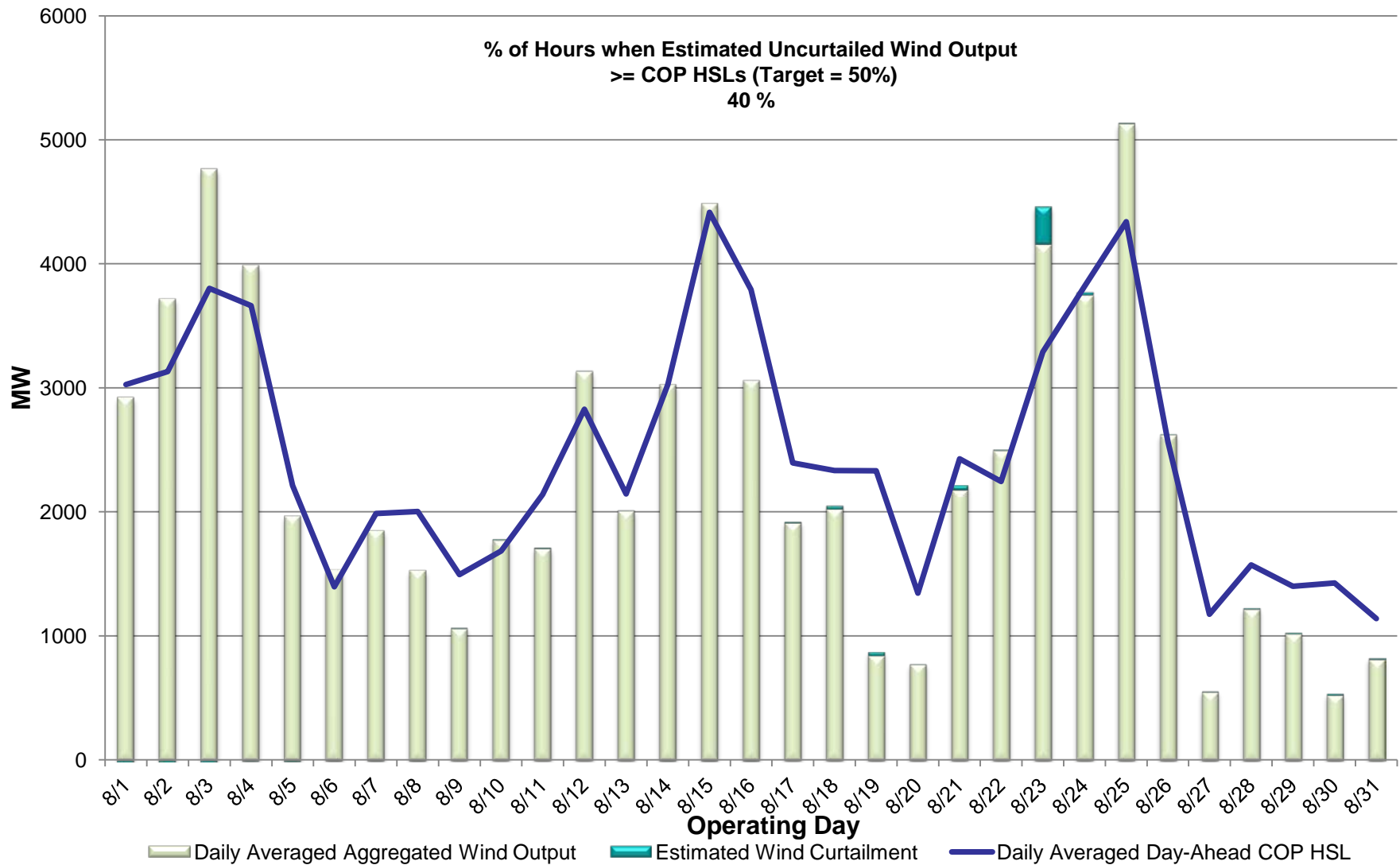
- August 2012 Operations
 - Peak Demand: Actual vs. Forecast
 - On-line Resources: Total at Peak and Wind
 - CPS1 Monthly Performance
 - Historical Peak and Minimum Loads
 - Day-Ahead Load Forecast Performance
 - Reliability Unit Commitment Capacity (RUC) by weather zone
 - Generic Transmission Limits (GTLs)
 - Advisories, Watches and EEAs
 - Significant System Incidents
- Planning Activities
 - Summary
 - Generation Interconnection Requests
 - Wind Capacity

August 2012 Daily Peak Demand: Hourly Average Actual vs. Forecast, Wind Day-Ahead COPs & On-line Capacity at Peak



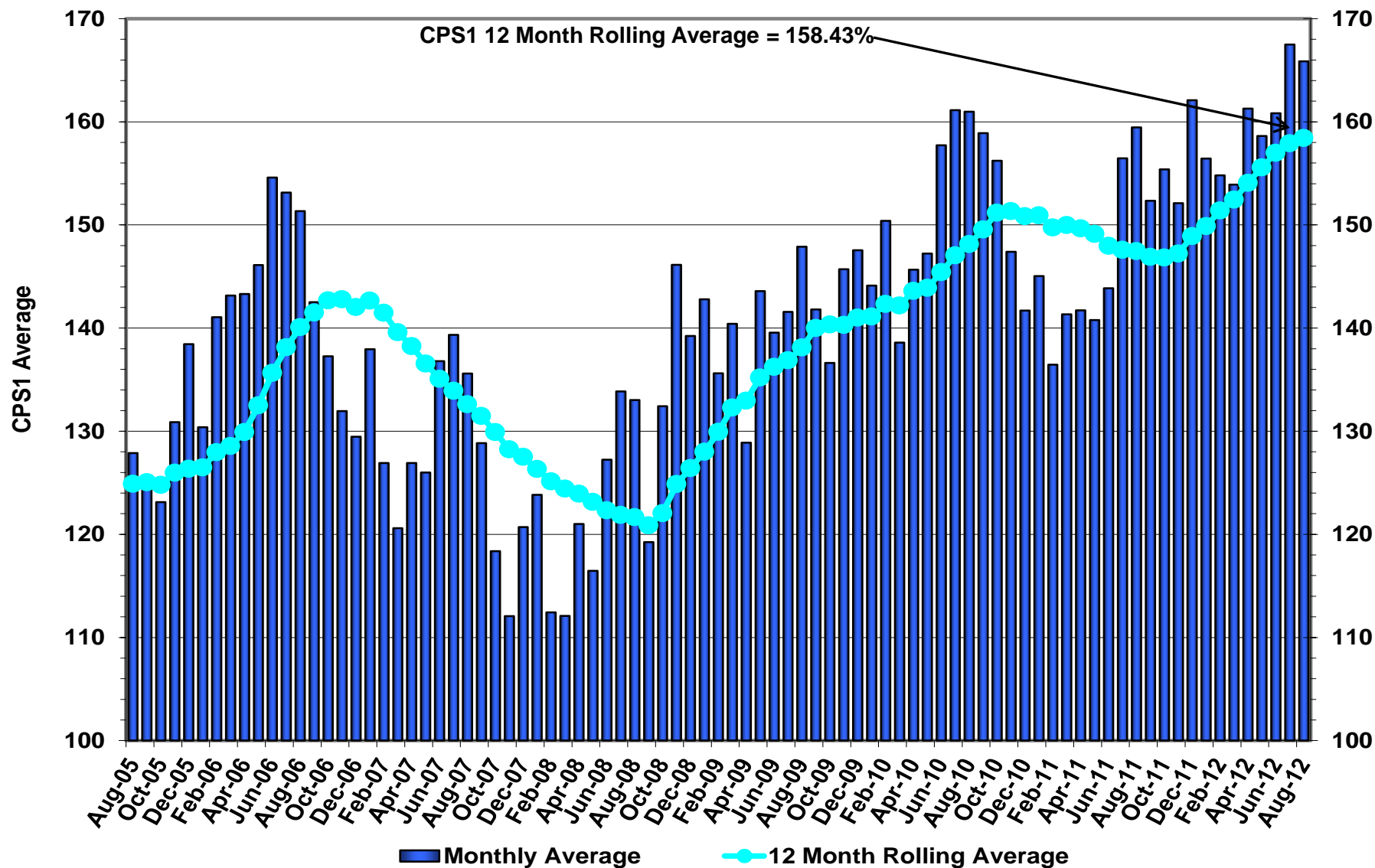
Note: All data are hourly averages during the peak load hour obtained from COPs, and EMMS.

August 2012 Actual Wind Output plus Curtailments vs. Wind Day-Ahead COPs for All Hours

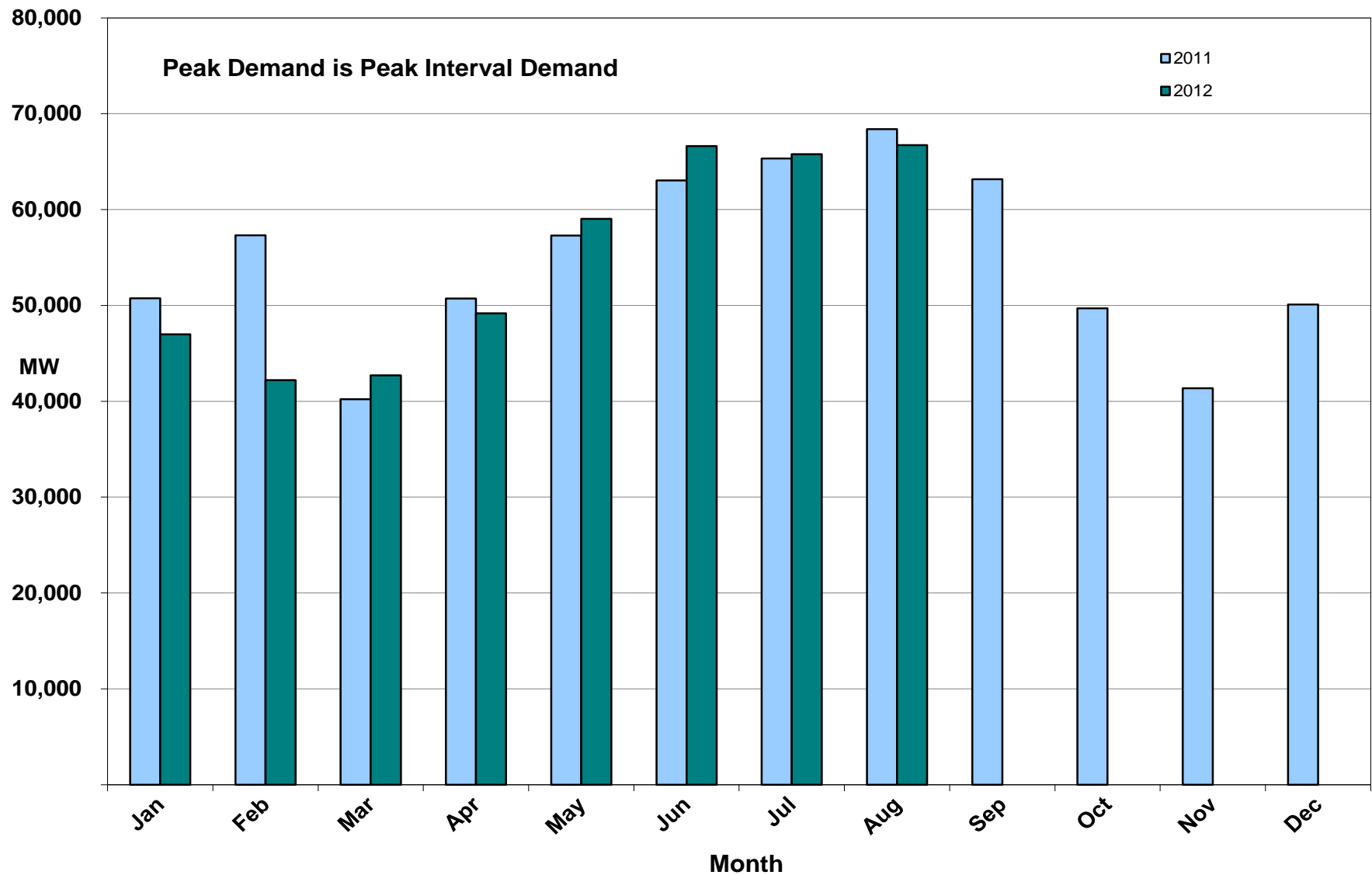


Note: QSEs must use the AWT 50% probability of exceedance forecast as the HSL in their COPs

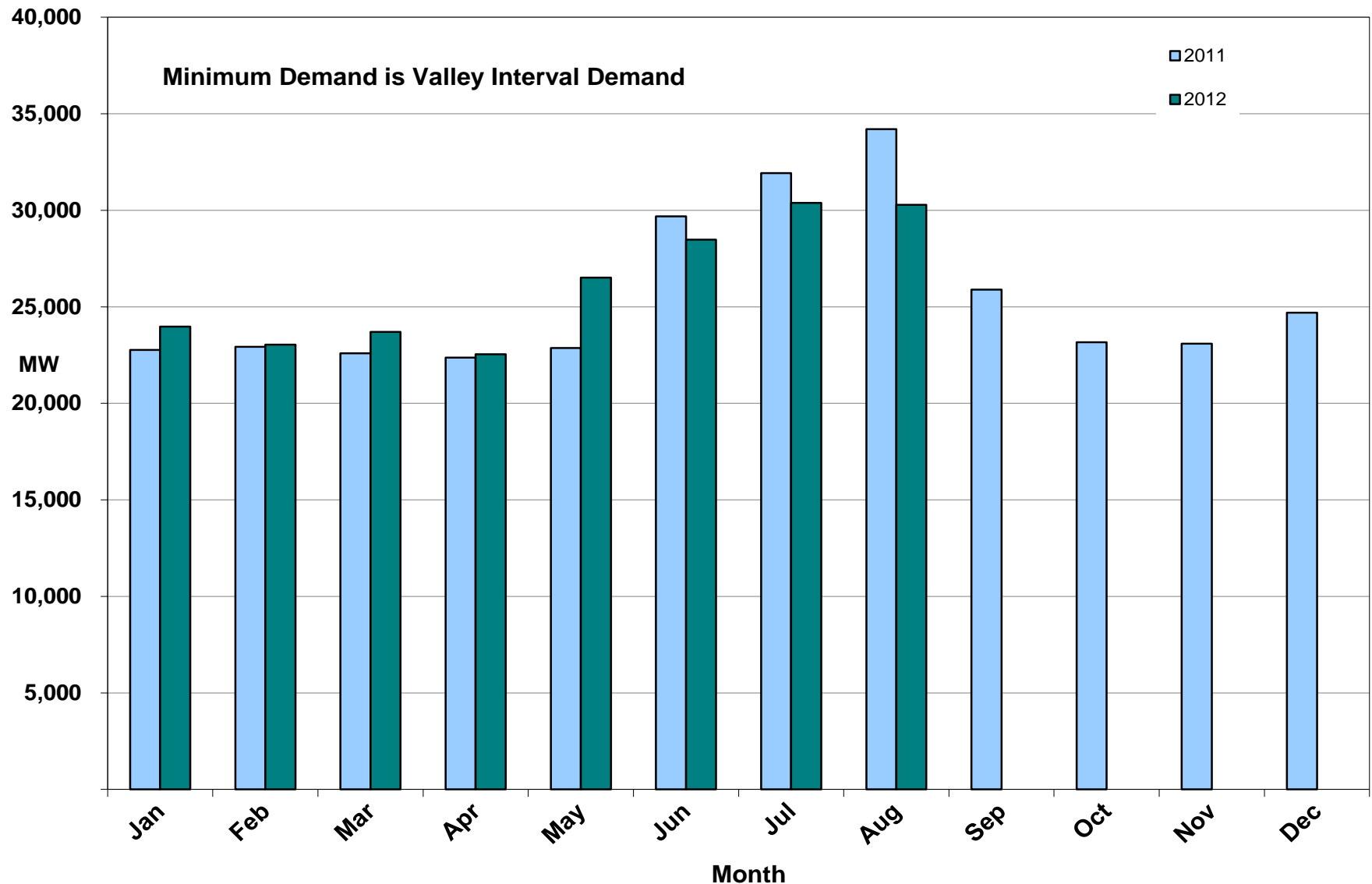
August 2012 ERCOT's CPS1 Monthly Performance



August 2012 Monthly Peak Actual Demand



August 2012 Monthly Minimum Actual Demand

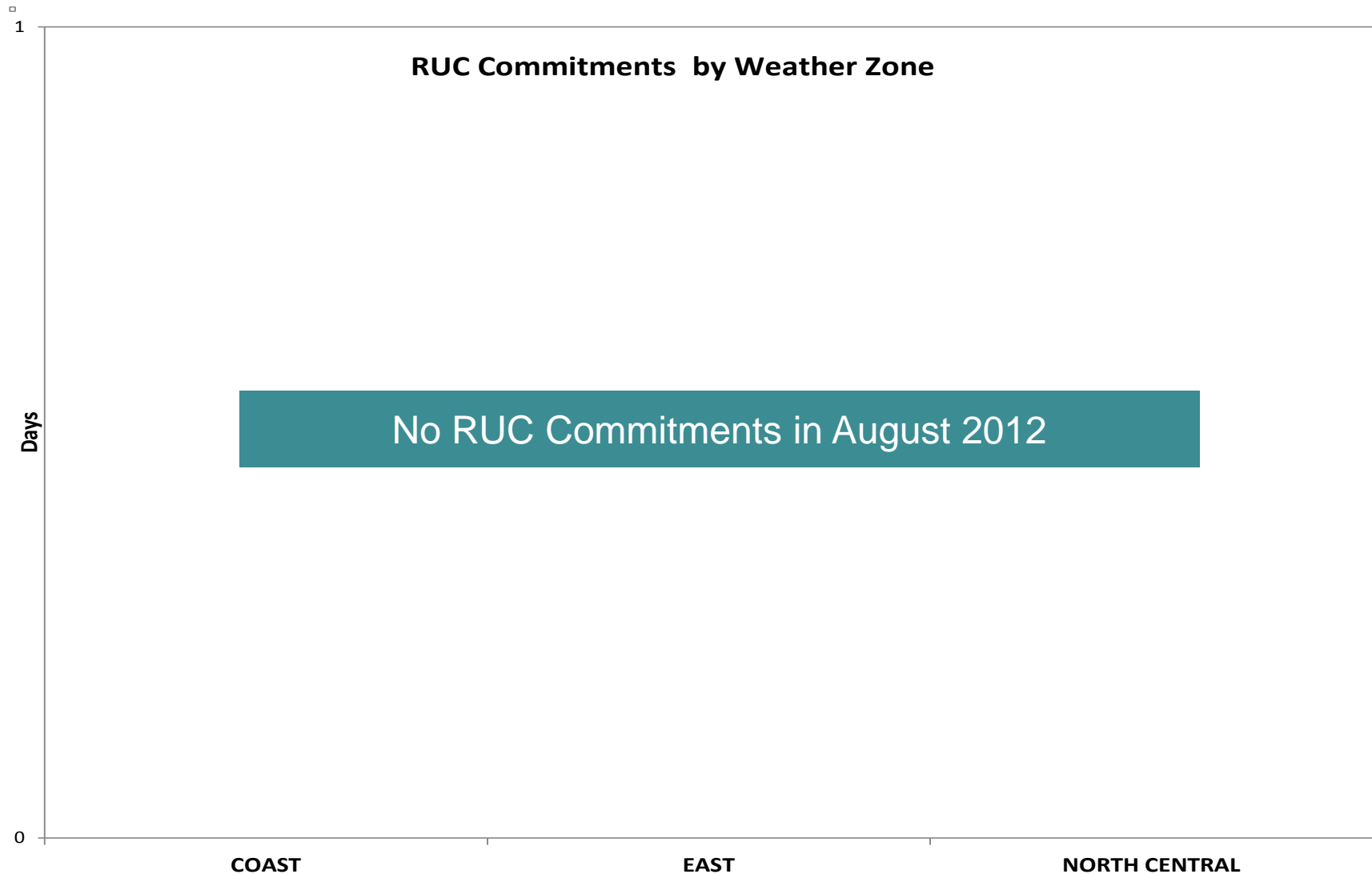


Day-Ahead Load Forecast Performance in August 2012

**Mean Absolute Percent Error (MAPE) for ERCOT Mid-Term Load Forecast (MTLF)
Run at 14:00 Day Ahead**

| | 2009 MAPE | 2010 MAPE | 2011 MAPE | 2012 MAPE | Aug 2012 MAPE | |
|-------------------------------------|----------------------|----------------------|----------------------|----------------------|-----------------------------------|------------------|
| Average Annual MAPE | 3.11 | 2.83 | 2.83 | 2.93 | 2.96 | |
| Lowest Monthly MAPE | 1.93 | 2.24 | 1.63 | 2.51 | Lowest Daily MAPE | 0.74 Aug – 06 |
| Highest Monthly MAPE | 4.11 | 3.79 | 3.55 | 3.49 | Highest Daily MAPE | 6.10 Aug – 16 |

Reliability Unit Commitment (RUC) Capacity by weather zone in August 2012



August 2012 Generic Transmission Limits (GTLs)

| GTLs | Aug 11 Days GTLs | Jun 12 Days GTLs | Jul 12 Days GTLs | Aug 12 Days GTLs | Last 12 Months Total Days (Aug11 – Aug12) |
|-----------------|------------------------|------------------------|------------------------|------------------------|--|
| North – Houston | 0 | 0 | 0 | 0 | 1 |
| West – North | 2 | 13 | 2 | 3 Aug (3,4,24) | 184 |
| Valley Import | 0 | 0 | 0 | 0 | 0 |

GTL: A transmission flow limit more constraining than a Transmission Element's normal limit established to constrain flow between geographic areas of the ERCOT Transmission System that is used to enforce stability and voltage constraints that cannot be modeled directly in ERCOT's transmission security analysis applications.

Note: This table lists how many times a constraint has been activated to avoid exceeding a GTL limit, it does not imply an exceedance of the GTL occurred.

Advisories and Watches in August 2012

- **Advisories issued for Physical Responsive Capability (PRC) below 3000 MW.**
 - None
- **Watches issued for Physical Responsive Capability (PRC) below 2500 MW.**
 - None
- **Transmission Watches**
 - 08/27 14:00 ERCOT issued a transmission watch for Rio Grande Valley area due to forced outages.
 - 08/30 17:05 ERCOT issued a transmission watch for Laredo area.
- **Energy Emergency Alerts**
 - None

Lake Levels Update – 01 September 2012

| Surface Water & (MW) | *Level @ Full Conservation Pool | *Level on Jan 1, 2011 | *Level on Oct 7, 2011 | *Level on Sept 01, 2012 |
|----------------------------|---------------------------------|-----------------------|-----------------------|-------------------------|
| Lake Texana (56) | 44.50 | 41.00 | 32.81 | 42.58 |
| Bardwell Lake (312) | 421.00 | 420.71 | 416.23 | 419.27 |
| Lake Colorado City (407) | 2,070.20 | 2057.33 | 2052.4 | 2049.44 |
| Lake Ray Hubbard (916) | 435.50 | 432.37 | 429.22 | 433.62 |
| Lake Granbury (983) | 693.00 | 691.90 | 686.27 | 689.30 |
| Lake Houston (1016) | 41.73 | 42.10 | 36.76 | 41.70 |
| Twin Oaks Reservoir (1616) | 400 | 398.87 | 398.27 | 399.81 |
| Lake Limestone (1689) | 363 | 359.03 | 354 | 359.55 |
| Martin Lake (2425) | 306 | 300.48 | 295.06 | 300.95 |

*** In Feet above Mean Sea Level**

ERCOT is currently tracking 140 active generation interconnection requests totaling almost 37,000 MW. This includes almost 21,000 MW of wind generation.

ERCOT is currently reviewing proposed transmission improvements with a total cost of \$153.7 Million

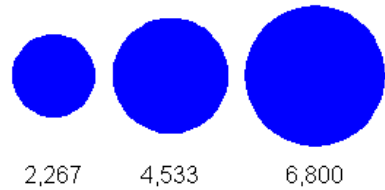
Transmission Projects endorsed in 2012 total \$446.7 Million

All projects (in engineering, routing, licensing and construction) total approximately \$9.77 Billion.

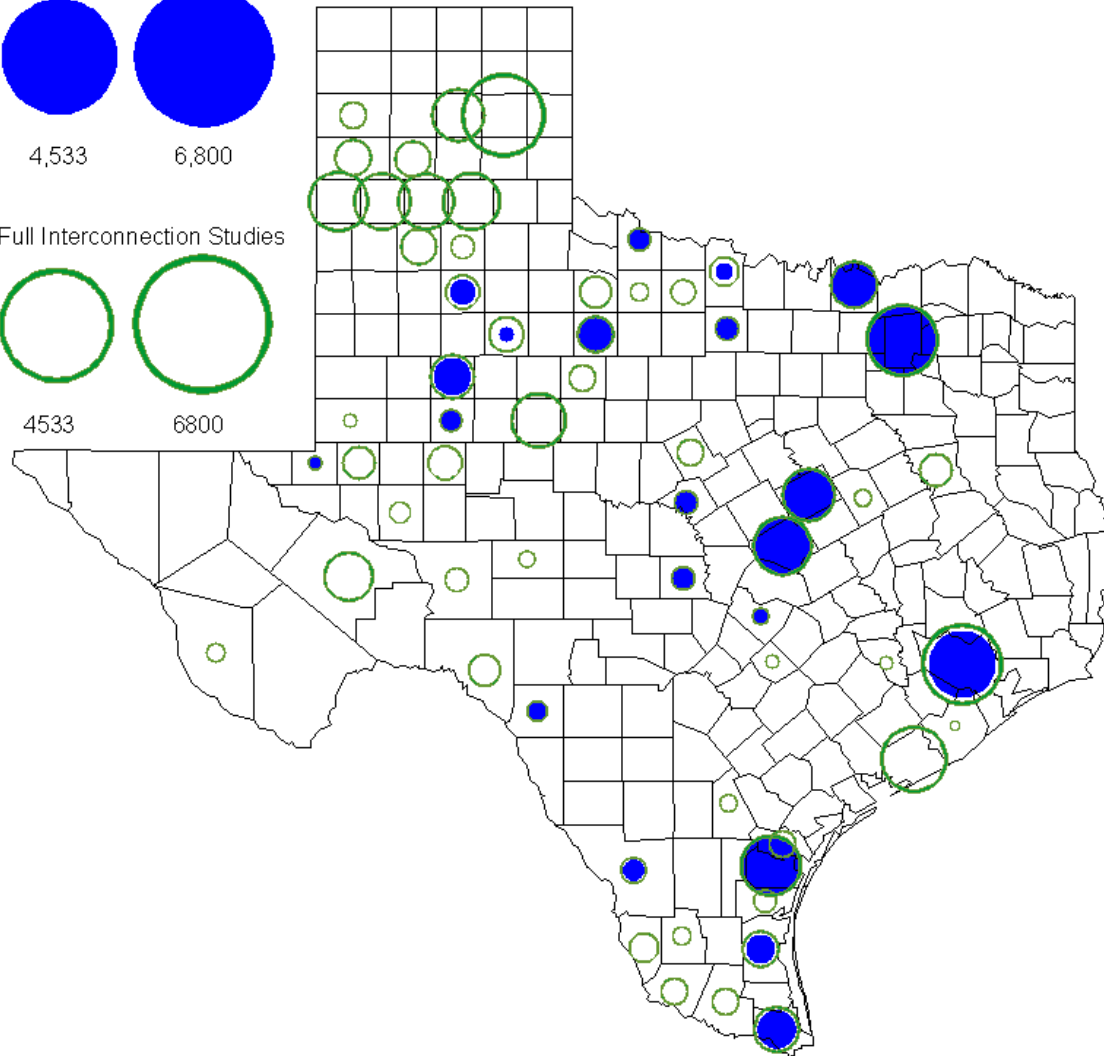
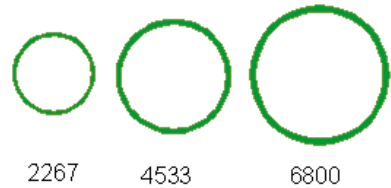
Transmission Projects energized in 2012 total about \$325.7 million.

County Location of Planned Generation with Interconnection Requests (all fuels) **August 2012**

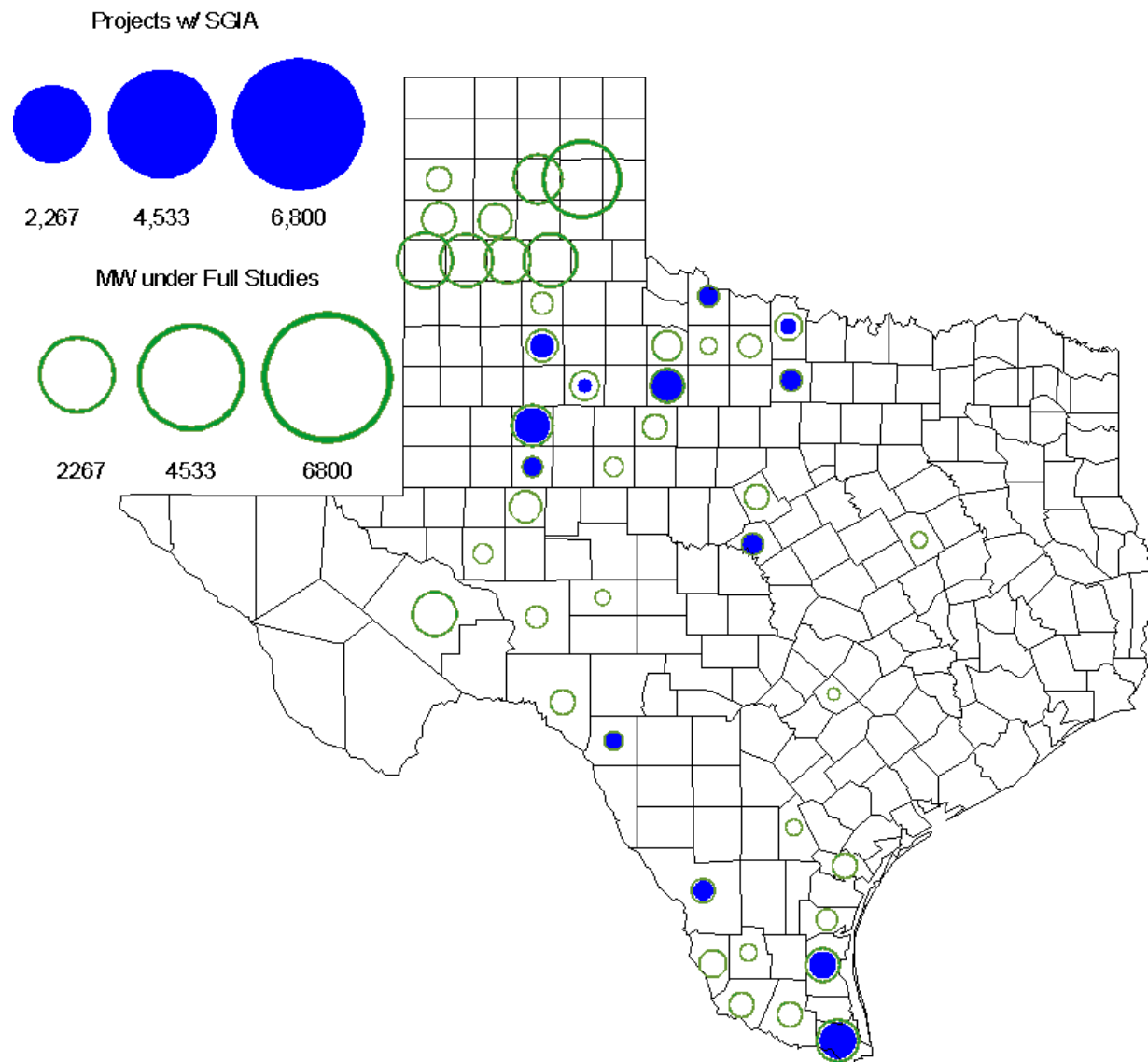
MW under Interconnection Agreements



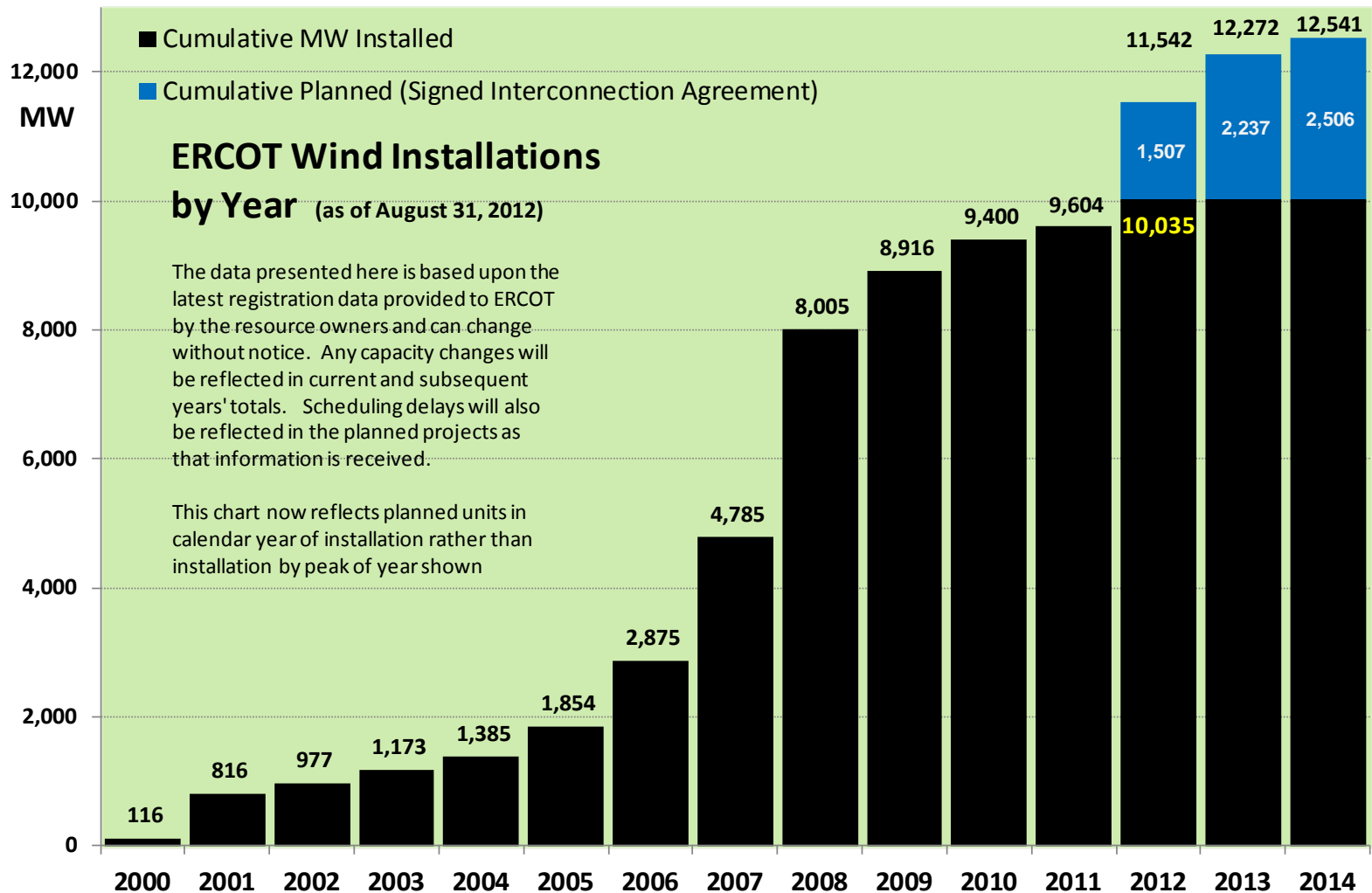
MW under Full Interconnection Studies



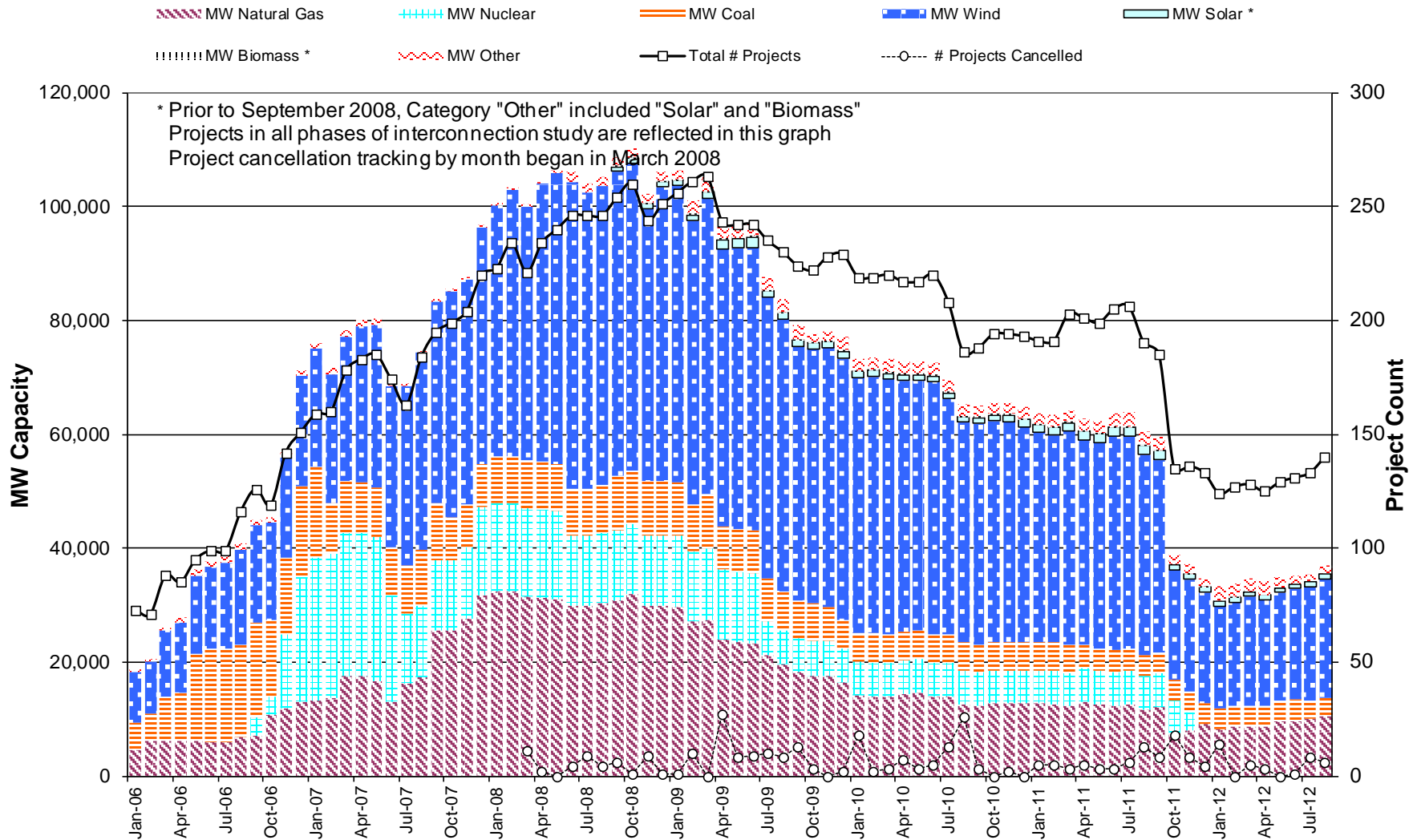
County Location of Planned Generation with Interconnection Requests (Wind) **August 2012**



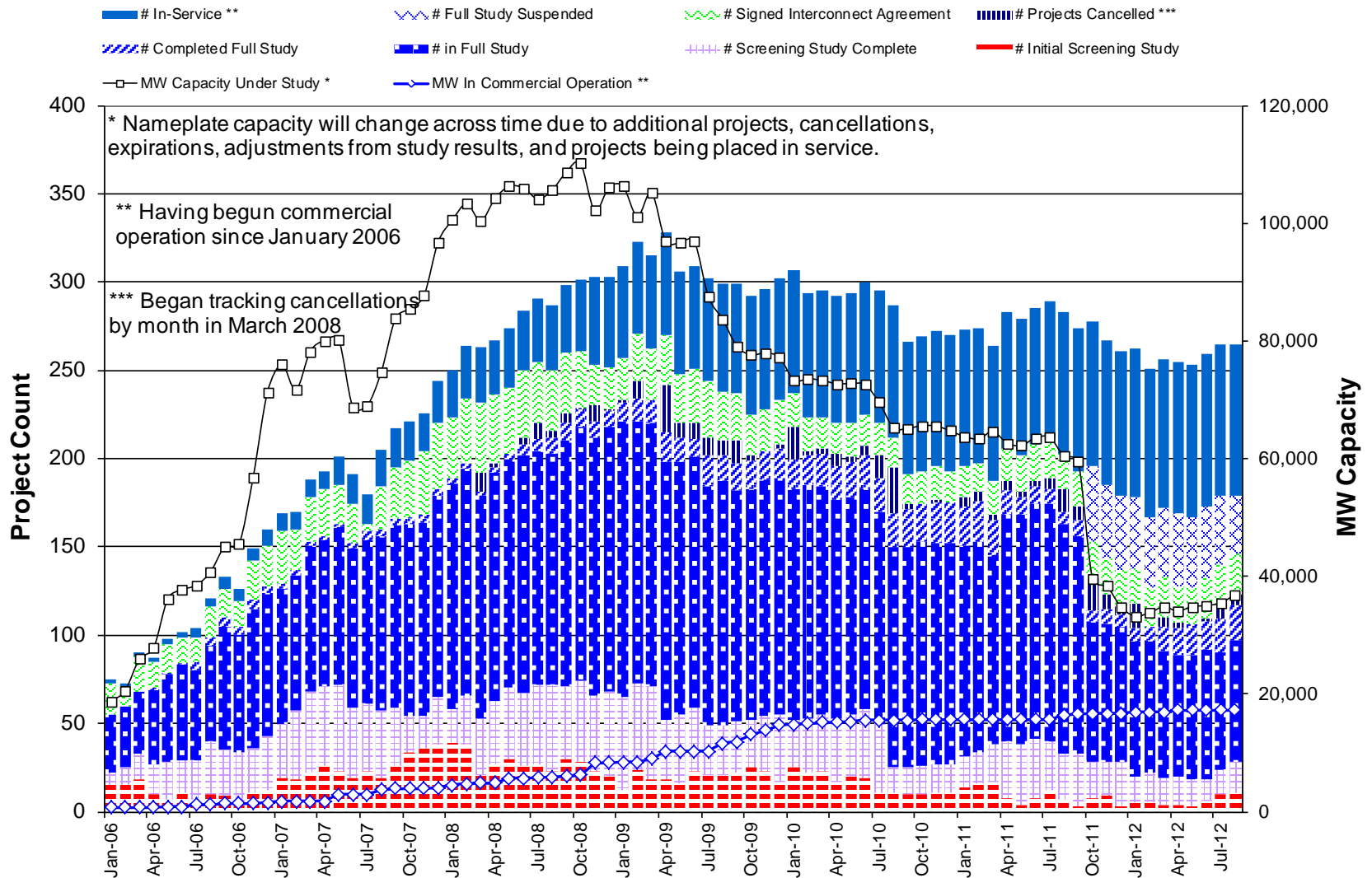
Wind Generation – August 2012



Generation Interconnection Activity by Fuel – August 2012



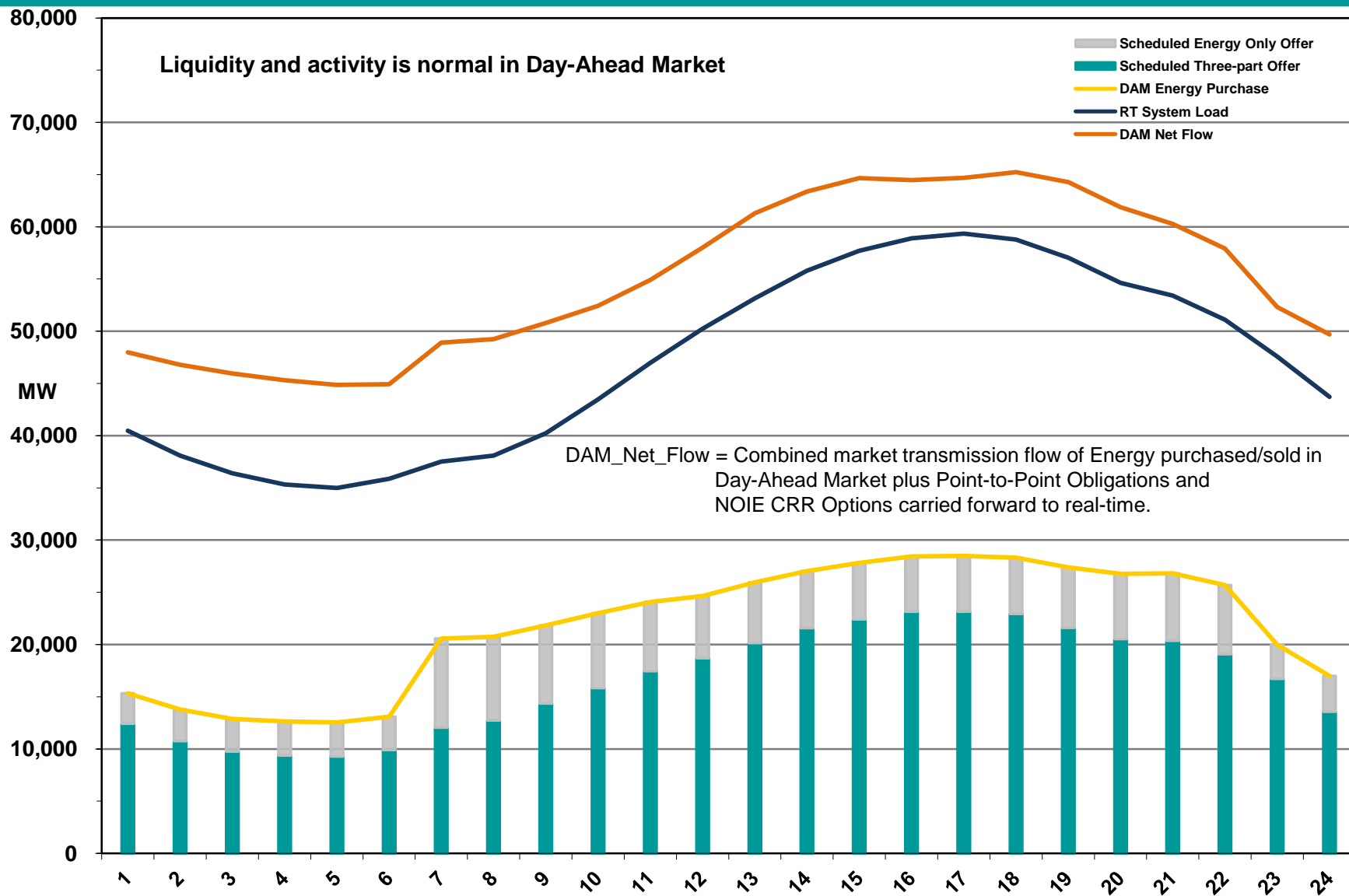
Generation Interconnection Activity by Project Phase – August 2012



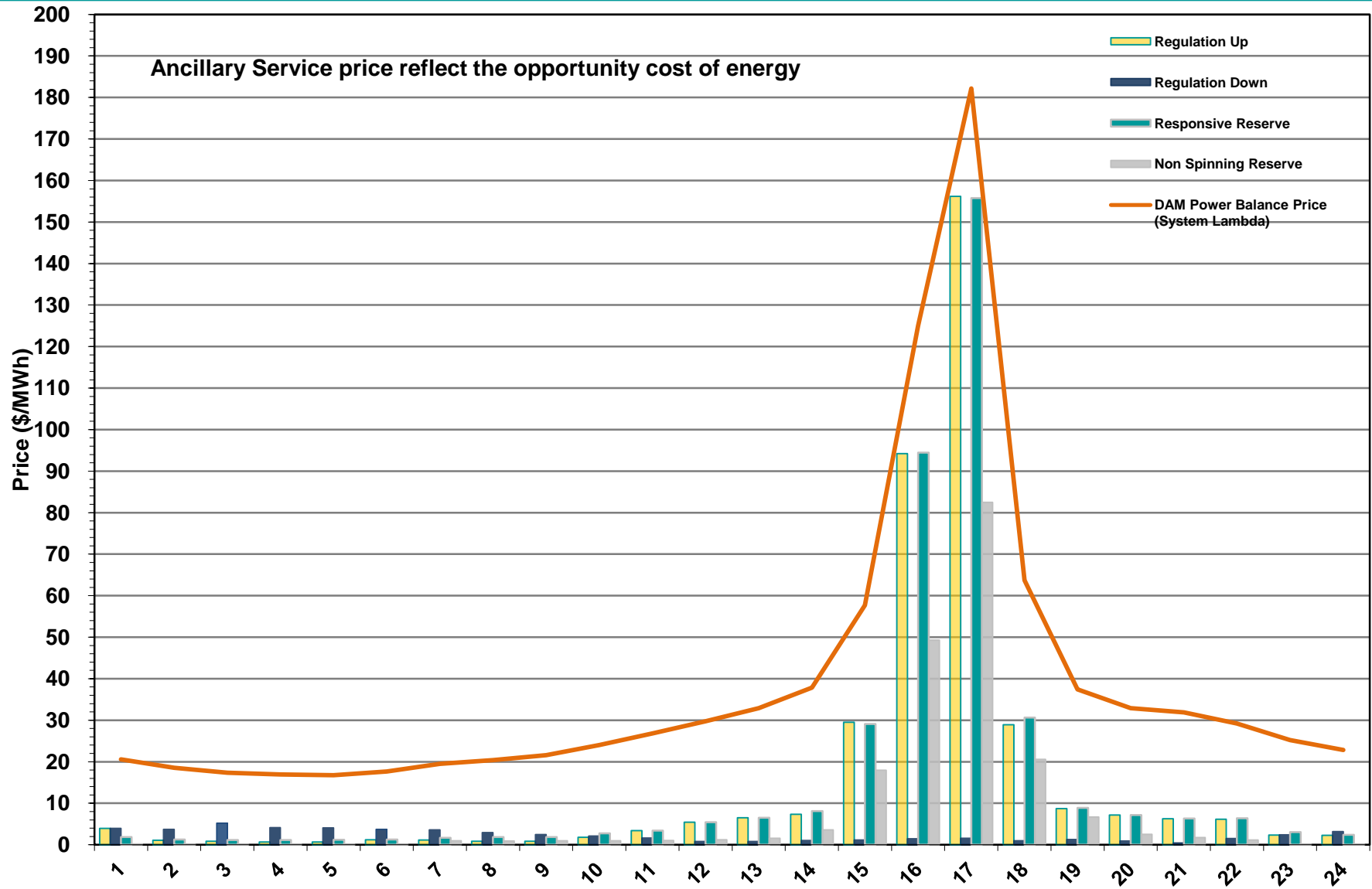


Market Operations

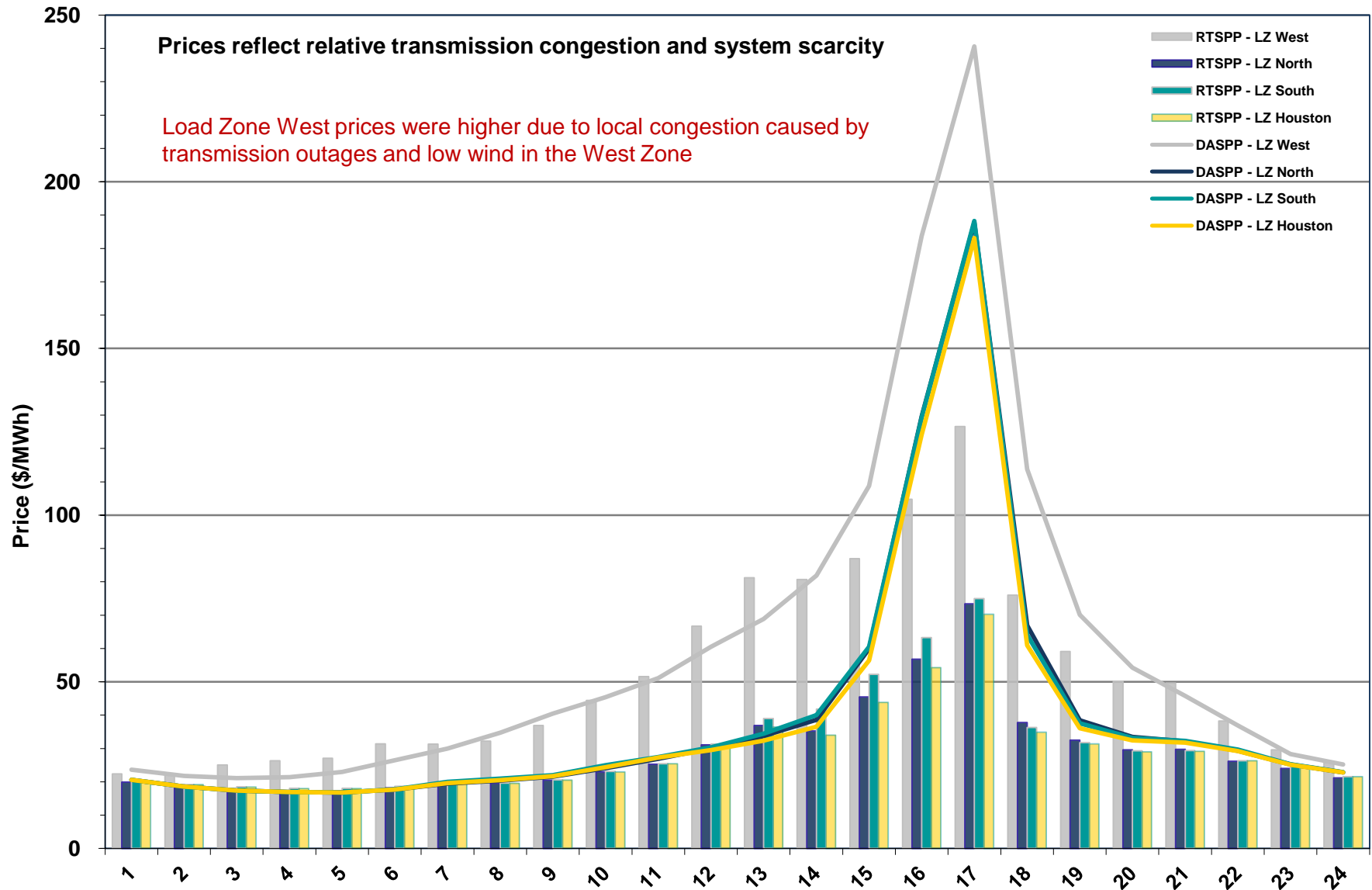
Day-Ahead Schedule – August 2012



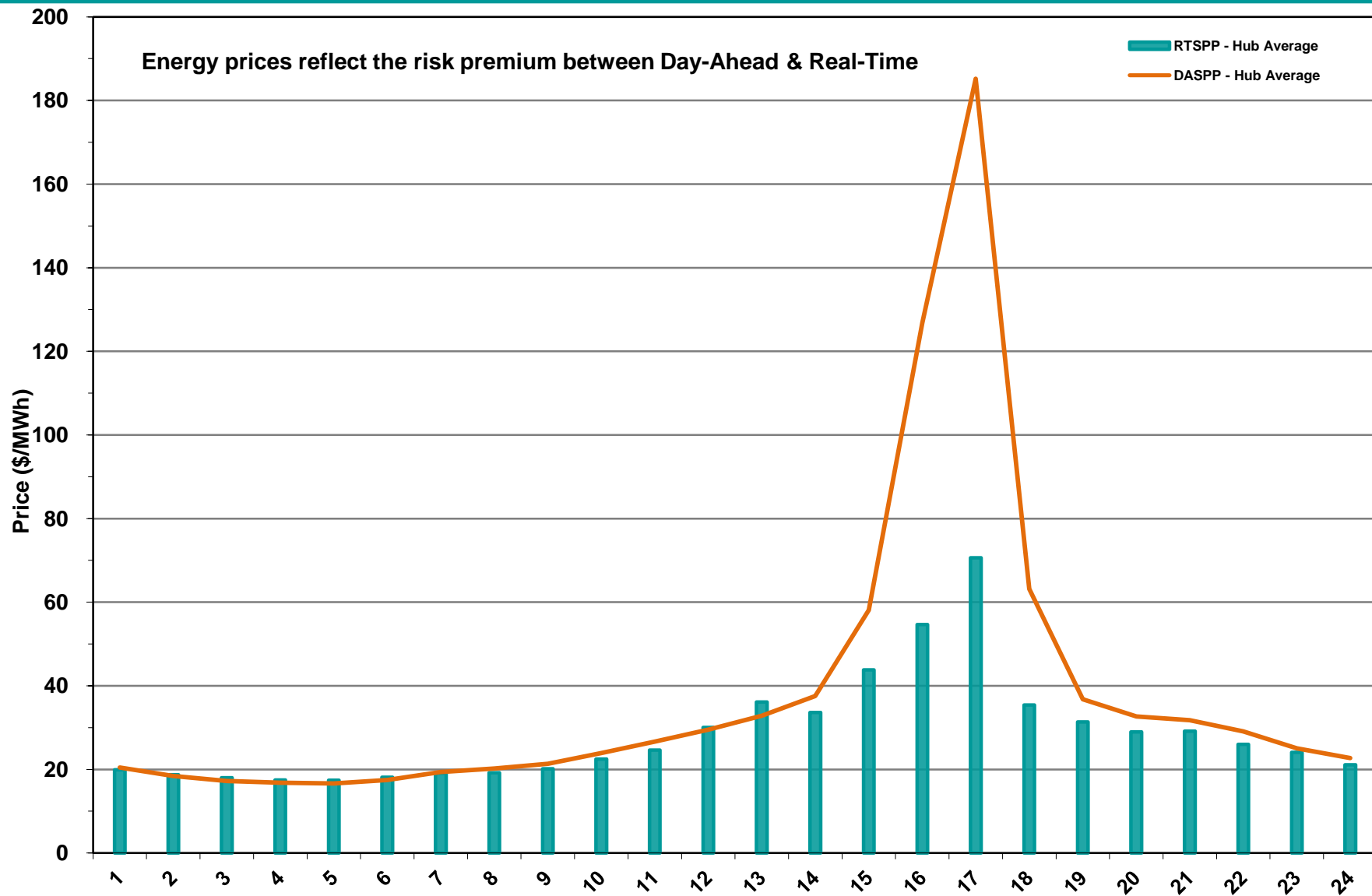
Day-Ahead Electricity And Ancillary Service Hourly Average Prices – August 2012



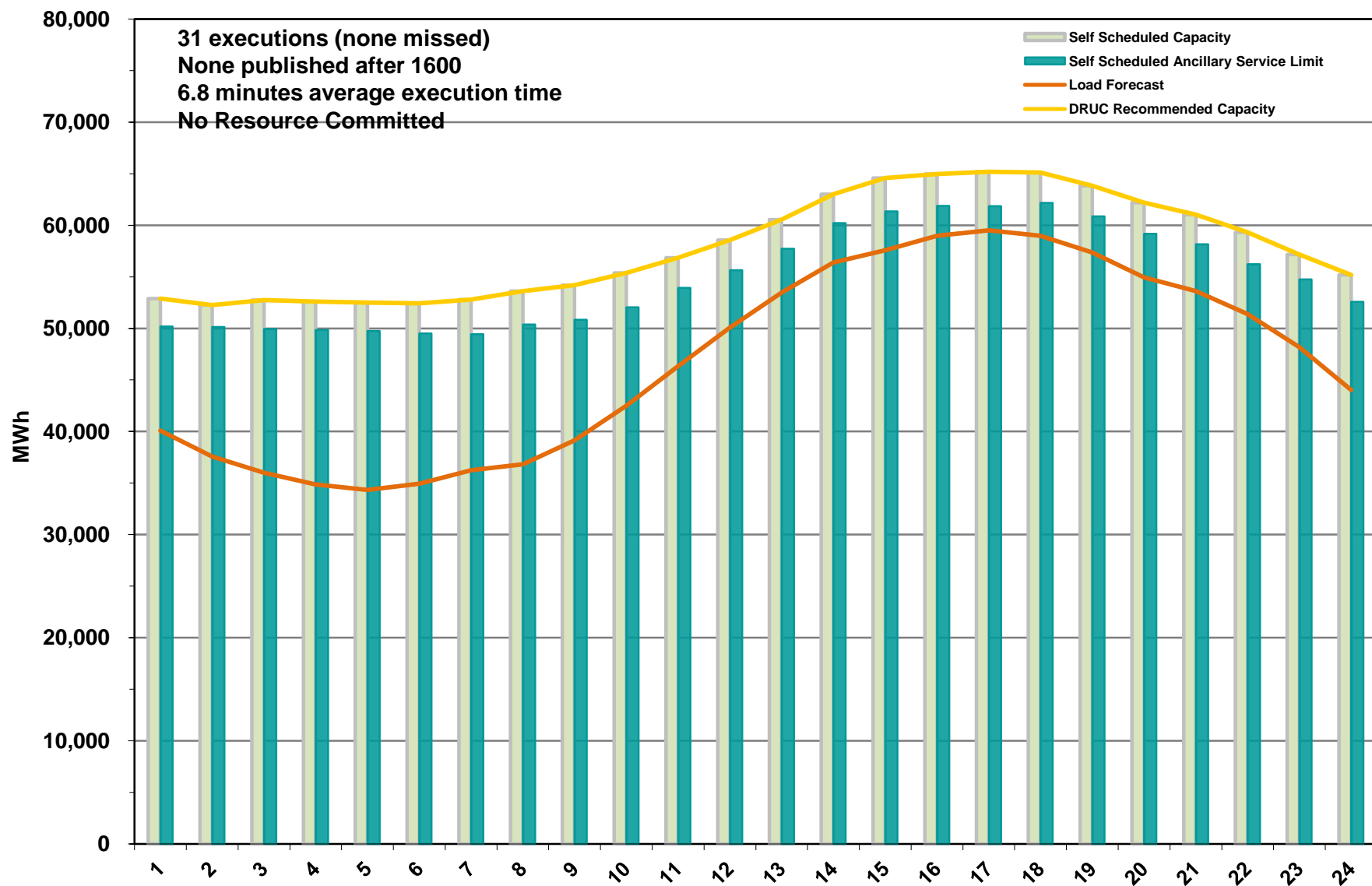
Day-Ahead Vs Real-Time Load Zone SPP (Hourly Average) - August 2012



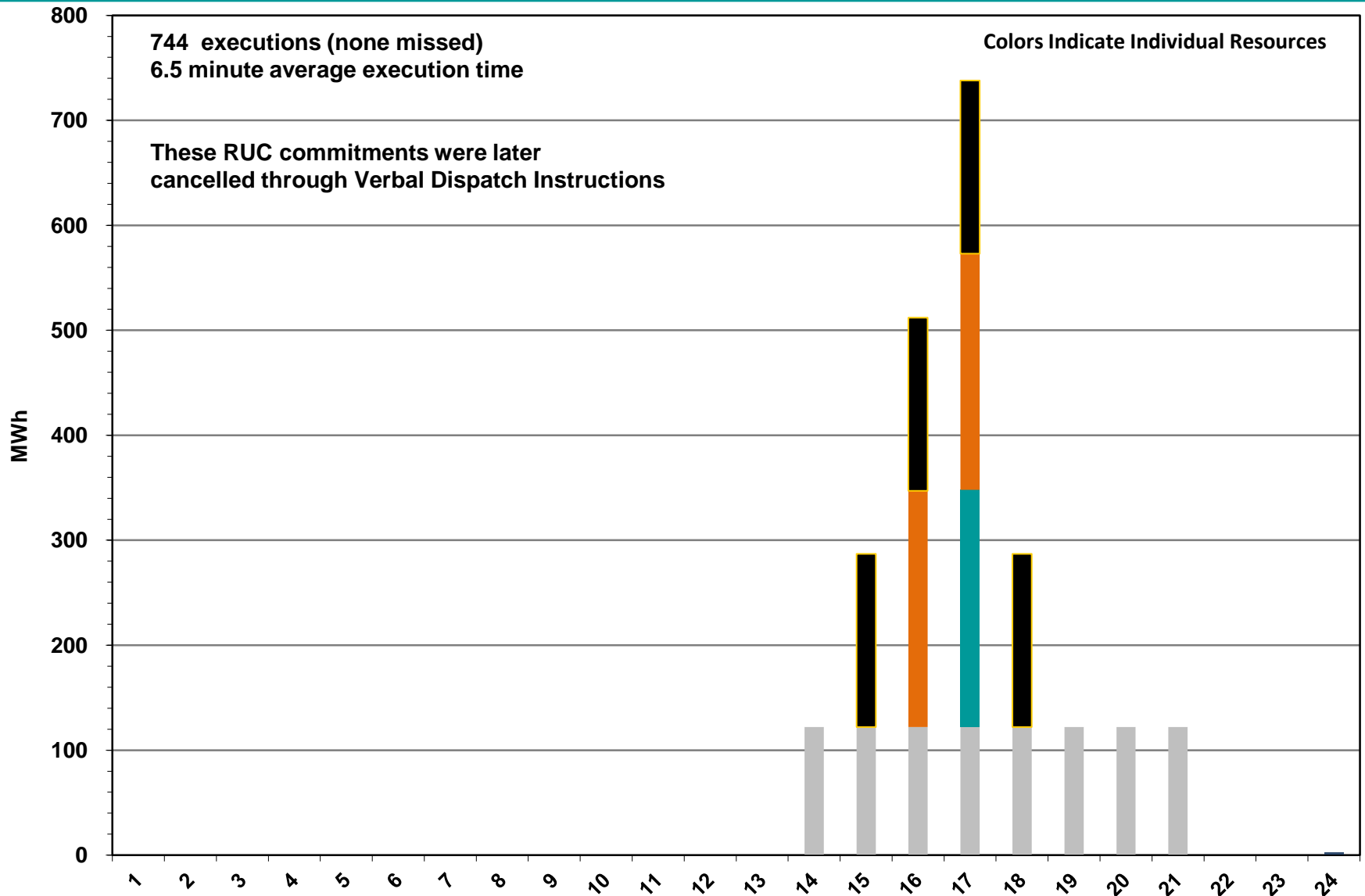
Day-Ahead Vs Real-Time Hub Average SPP (Hourly Average) - August 2012



DRUC Monthly Summary – August 2012



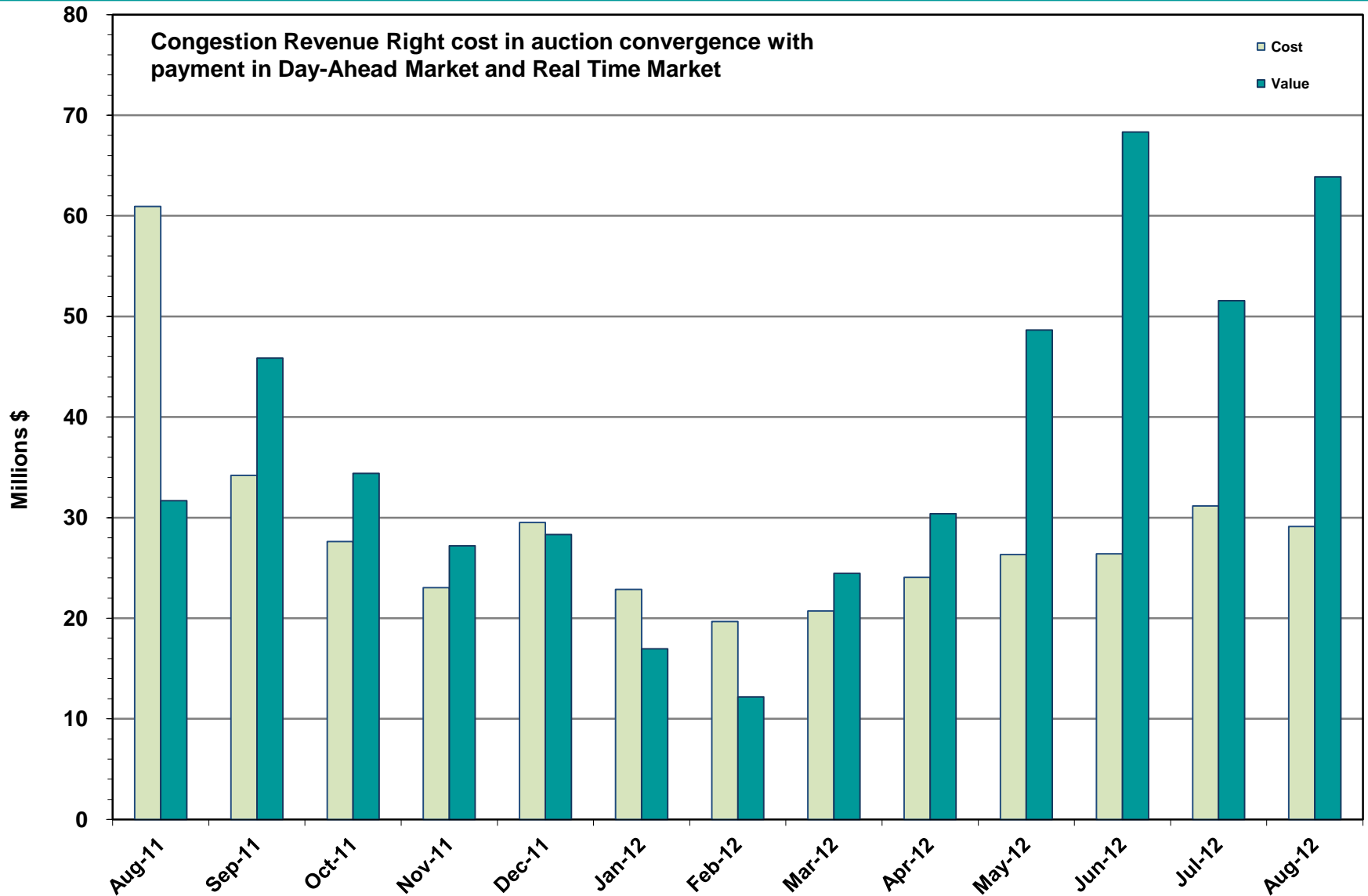
HRUC Monthly Summary – August 2012



Non-Spinning Reserve Service Deployment – August 2012

| Deployment Start Time | Deployment End Time | Deployment Duration (Hours) | Max Deployment (MW) | Reason |
|-----------------------|---------------------|-----------------------------|---------------------|--------|
| NONE | | | | |
| | | | | |
| | | | | |

CRR Price Convergence – August 2012



Reliability Services – August 2012

Reliability Unit Commitment (RUC) \$ in Millions

| | |
|-------------------------|----------|
| RUC Make-Whole Payments | (\$0.00) |
|-------------------------|----------|

| | |
|----------------------|--------|
| RUC Clawback Charges | \$0.00 |
|----------------------|--------|

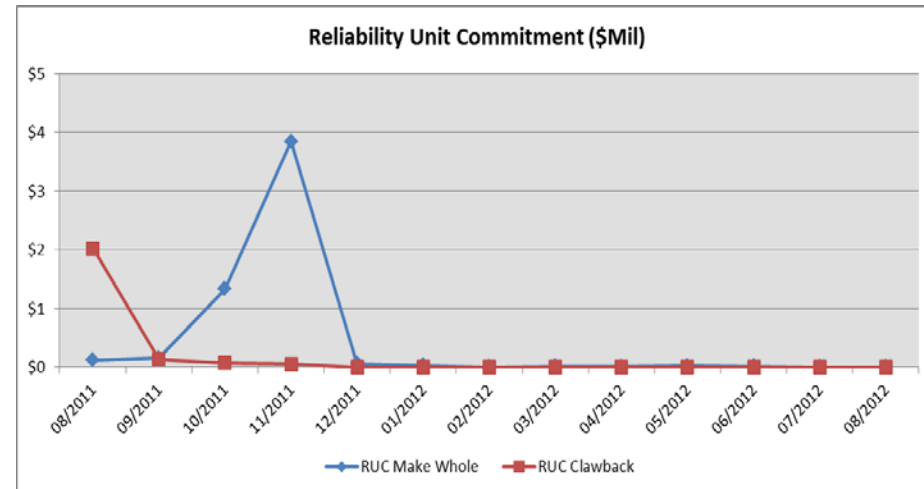
| | |
|----------------------------------|-----------------|
| RUC Commitment Settlement | (\$0.00) |
|----------------------------------|-----------------|

| | |
|----------------------------|--------|
| RUC Capacity Short Charges | \$0.00 |
|----------------------------|--------|

| | |
|-----------------------|--------|
| RUC Make-Whole Uplift | \$0.00 |
|-----------------------|--------|

| | |
|---------------------------------------|---------------|
| RUC Commitment Cost Allocation | \$0.00 |
|---------------------------------------|---------------|

| | |
|---------------------------|--------|
| RUC Decommitment Payments | \$0.00 |
|---------------------------|--------|



RUC Cost continues to trend low.

August 2012 cost was \$0, compared to:

- A charge of \$0.002M in July 2012
- A charge of \$0.12M in August 2011

Ancillary Services – August 2012

| Capacity Services | \$ in Millions |
|-------------------------------------|-----------------------|
| Regulation Up Service | \$9.0 |
| Regulation Down Service | \$0.7 |
| Responsive Reserve Service | \$28.3 |
| Non-Spinning Reserve Service | \$8.6 |
| Black Start Service | \$0.6 |
| Voltage Services - Reactive Power | \$0.0 |
| Voltage Services - Lost Opportunity | \$0.0 |
| Total Capacity Service | \$47.33 |

Capacity Services costs increased from last month, and are much lower than August 2011. August 1st & 2nd accounted for slightly greater than 50% of the entire month's cost.

August 2012 cost was \$47.33M, compared to:

- A charge of \$24.32M in July 2012
- A charge of \$274.55M in August 2011

Energy Settlement – August 2012

| Day-Ahead Market Energy Settlement | \$ in Millions |
|---|-----------------------|
| Energy Purchases | \$726.02 |
| Point to Point Obligation Purchases | \$67.03 |
| RMR Day-Ahead Revenue | \$0.00 |
| Energy Sales | (\$710.17) |
| Day-Ahead Congestion Rent | \$82.88 |
| | |
| Day-Ahead Market Make-Whole Payments | (\$0.17) |

Day-Ahead Market settlement increased from last month. Real-Time energy settlement decreased from previous month. Decreases are attributable to lower prices.

DAM energy settlement peaked on August 1 & 2.
RTM energy settlement peaked on August 1 & 6.

Day-Ahead Congestion Rent has been steadily increasing since February and reached its all time high of \$82.88M

| Real-Time Market Energy Settlement | \$ in Millions |
|--|-----------------------|
| Energy Imbalance at a Resource Node | (\$659.61) |
| Energy Imbalance at a Load Zone | \$985.23 |
| Energy Imbalance at a Hub | (\$252.15) |
| Real Time Congestion from Self Schedules | \$0.78 |
| Block Load Transfers and DC Ties | (\$8.26) |
| Impact to Revenue Neutrality | \$65.98 |
| | |
| Emergency Energy Payments | (\$0.04) |
| Base Point Deviation Charges | \$0.37 |
| | |
| Real-Time Metered Generation (MWh in millions) | 34.91 |

Congestion Revenue Rights (CRR) – August 2012

| Auction Disbursements | \$ in Millions |
|---|-----------------------|
| Annual Auction | (\$15.50) |
| Monthly Auction | (\$13.61) |
| Total Auction Revenue | (\$29.11) |
| Day-Ahead CRR Settlement | (\$58.85) |
| Day-Ahead CRR Short-Charges | \$0.01 |
| Day-Ahead CRR Short-Charges Refunded | (\$0.01) |
| Real-Time CRR Settlement | (\$4.29) |
| Real-Time CRR Short-Charges | \$0.00 |
| Real-Time CRR Short-Charges Refunded | (\$0.00) |
| Total CRR Proceeds | (\$63.14) |
| Day-Ahead Point to Point Obligations Settlement | \$67.03 |
| Real-Time Point to Point Obligation Settlement | (\$71.80) |
| Net Point to Point Obligation Settlement | (\$4.77) |

Congestion Revenue Rights were fully funded.

Highest CRR settlement observed on August 2.

Excess funds available for distribution to load.
Distribution of balancing account funds to load for August 2012 was \$24.11M, compared to:

- \$20.14M in July 2012
- \$8.73M in August 2011

High excess funds primarily due to separation in West Hub to West Load zone prices.

Revenue Neutrality – August 2012

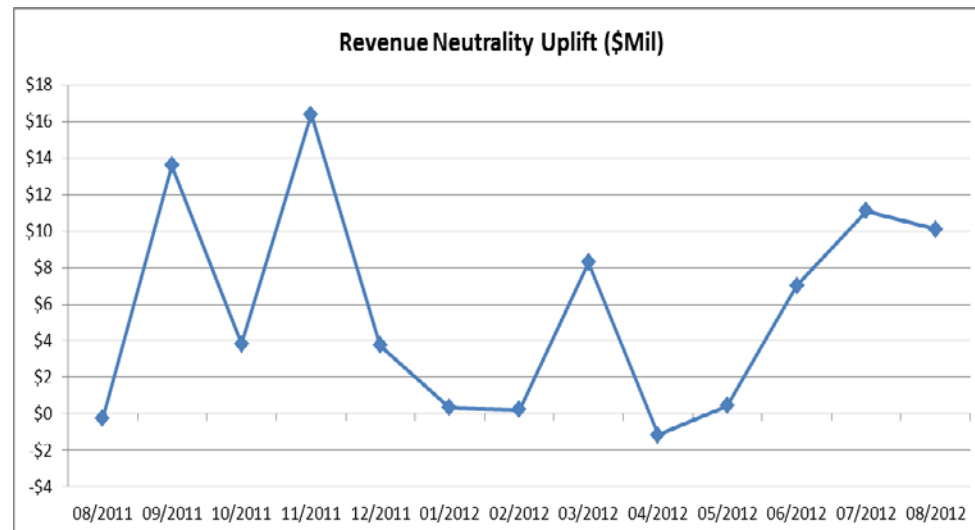
Revenue Neutrality Settlement

| | \$ in Millions |
|---|----------------|
| Real-Time Point to Point Obligation Settlement | (\$71.80) |
| Real-Time Point to Point Options and Options with Refund Settlement | (\$4.29) |
| Real-Time Energy Imbalance Settlement | \$73.47 |
| Real-Time Congestion from Self-Schedules Settlement | \$0.78 |
| DC Tie & Block Load Transfer Settlement | (\$8.26) |
| Charge to Load | \$10.11 |

Revenue Neutrality charges to load slightly decreased from July 2012.

August 2012 was a charge of \$10.11M, compared to:

- \$11.12M charge in July 2012
- \$0.24M credit in August 2011



Net Uplift to Load – August 2012

Market-Based Uplifts

\$ in Millions

| | |
|---|-----------|
| CRR Auction Revenue Disbursement Settlement | (\$29.11) |
| Balancing Account Proceeds Settlement | (\$24.13) |
| Net Reliability Unit Commitment Settlement | \$0.00 |
| Ancillary Services Settlement | \$47.33 |
| Reliability Must Run Services Settlement | \$0.0 |
| Reliability Must Run for Capacity | \$0.0 |
| Real-Time Revenue Neutrality Settlement | \$10.11 |
| Emergency Energy Settlement | \$0.04 |
| Base Point Deviation Settlement | (\$0.37) |

Total 3.87

Fee Uplifts

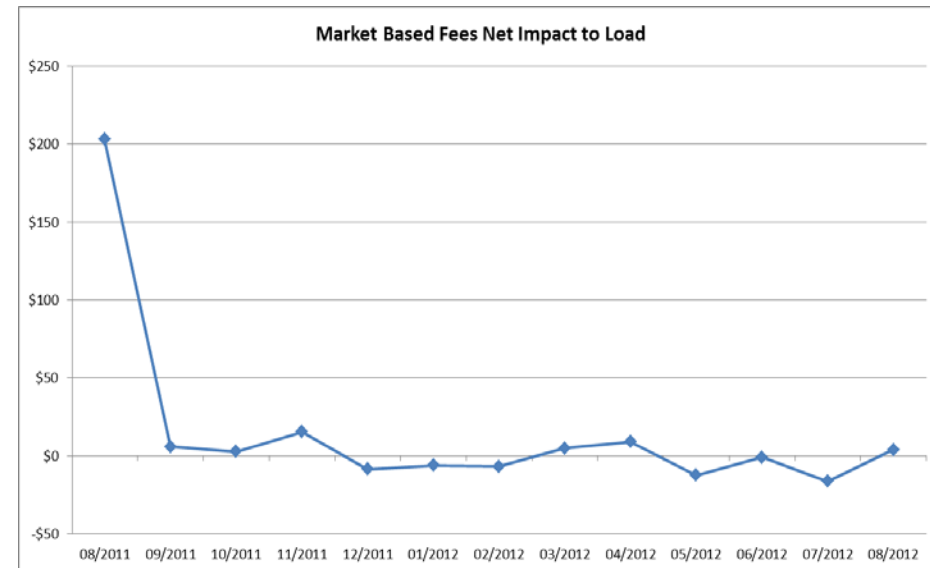
| | |
|-------------------------------------|---------|
| ERCOT Administrative Fee Settlement | \$14.68 |
|-------------------------------------|---------|

Net Uplift Charge to Load 18.55

Net uplift to Load increased over last month, but is down significantly from August of 2011.

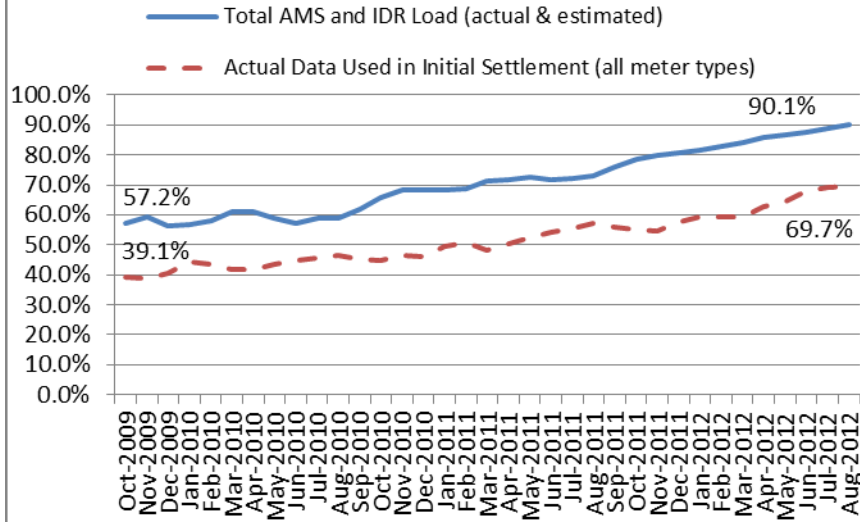
August 2012 was a charge of \$18.55M, compared to:

- A credit of \$2.08M in July 2012
- A charge of \$218.9 in August 2011



Advanced Meter Settlement Impacts – August 2012

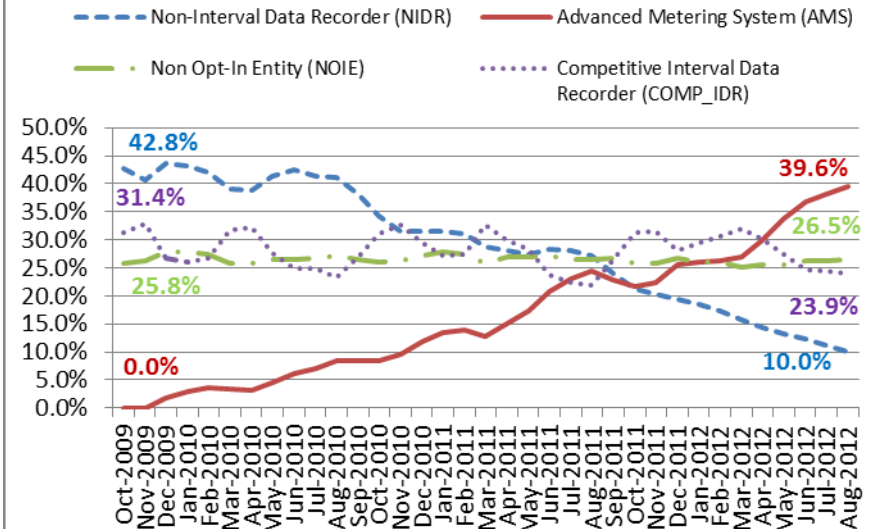
Percent Actual/Percent Interval Data Recorder (IDR)



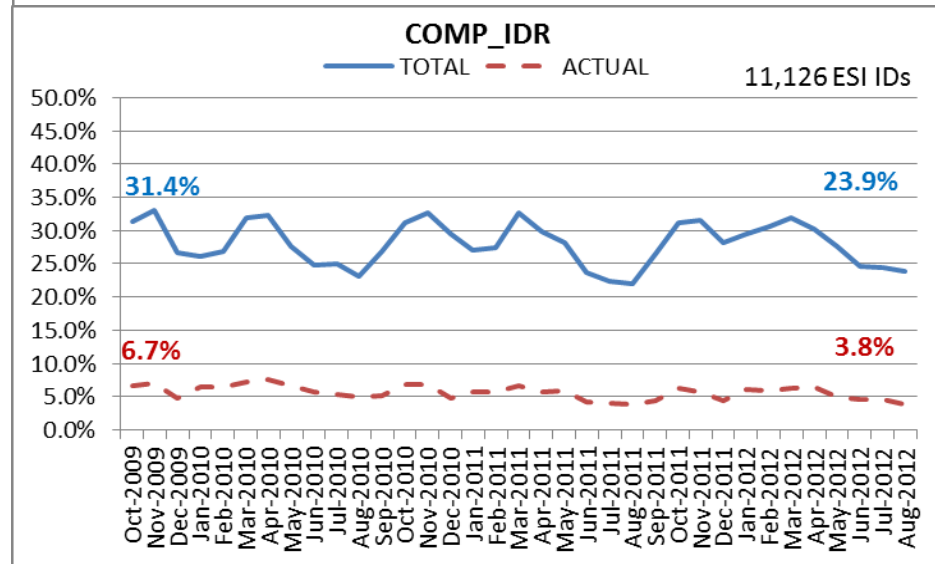
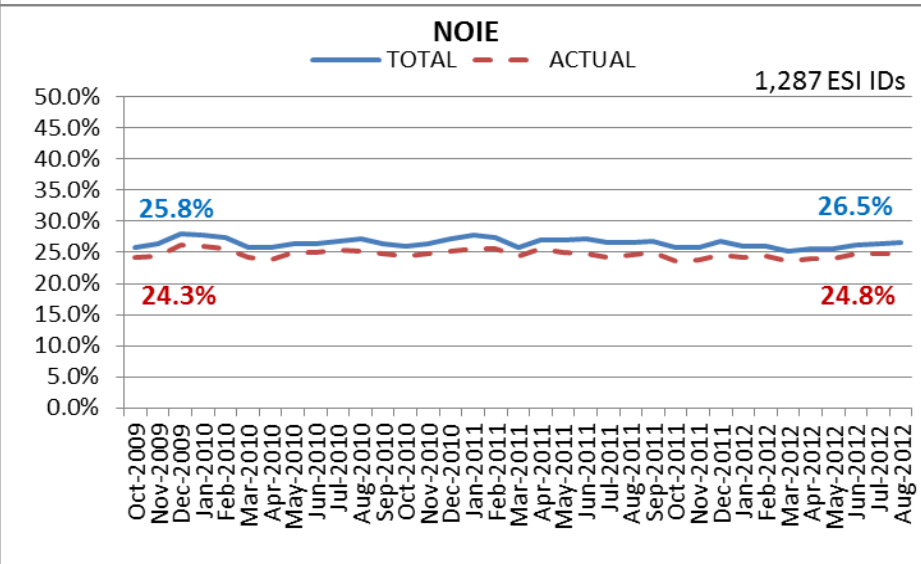
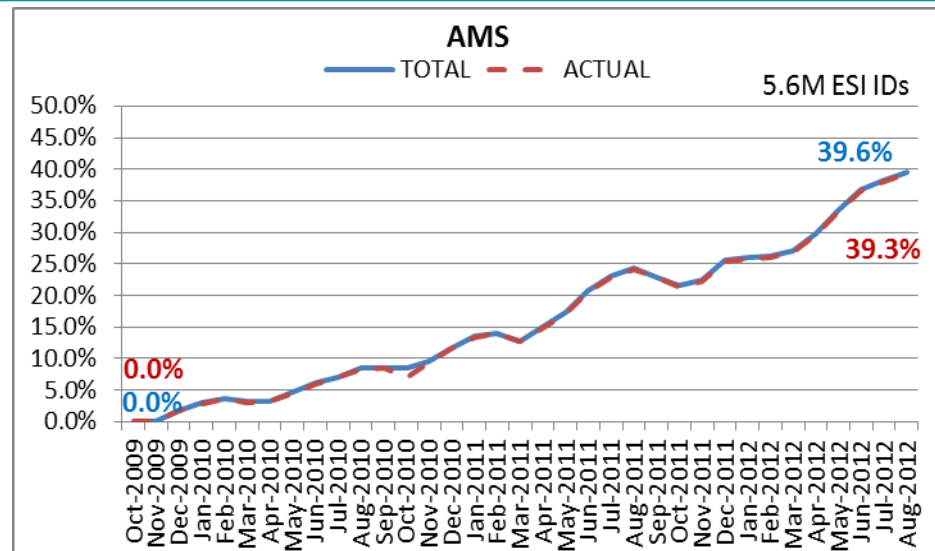
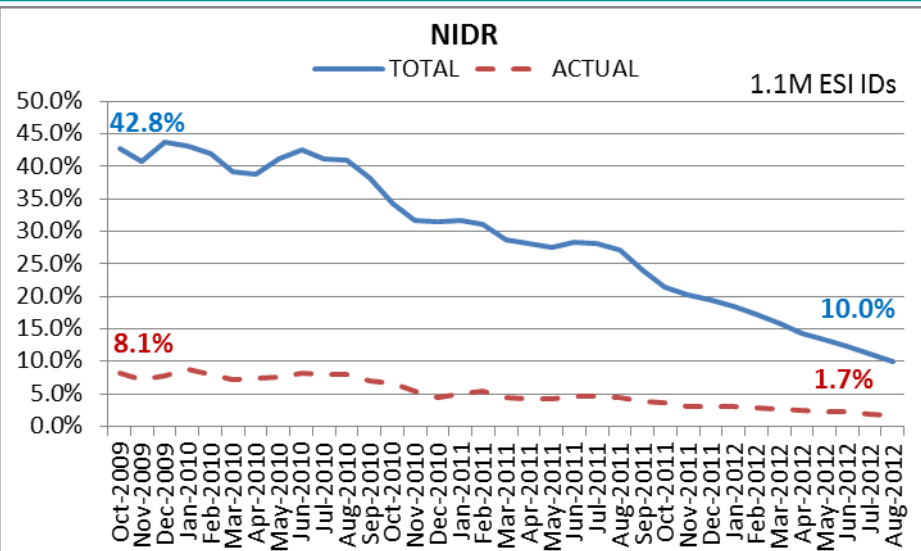
August 2012: 90.1% of the load in ERCOT is settled with 15-min interval data (AMS, Competitive IDR, and NOIE IDR).

August 2012: At month end, settling 5.6M ESIDs using Advanced Meter data.

Percent of Load by Meter Type



ERCOT Wide Load Volumes by Meter Type – INITIAL Settlement – August 2012

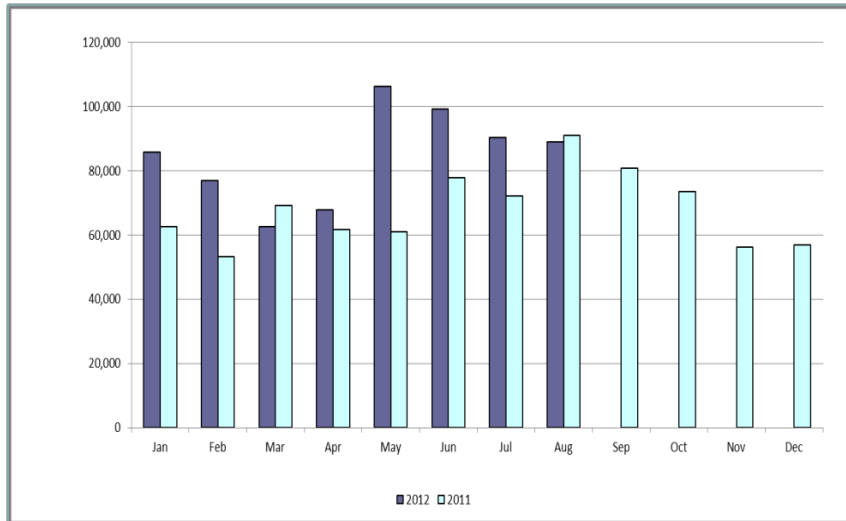


Retail Transaction Volumes – Summary – August 2012

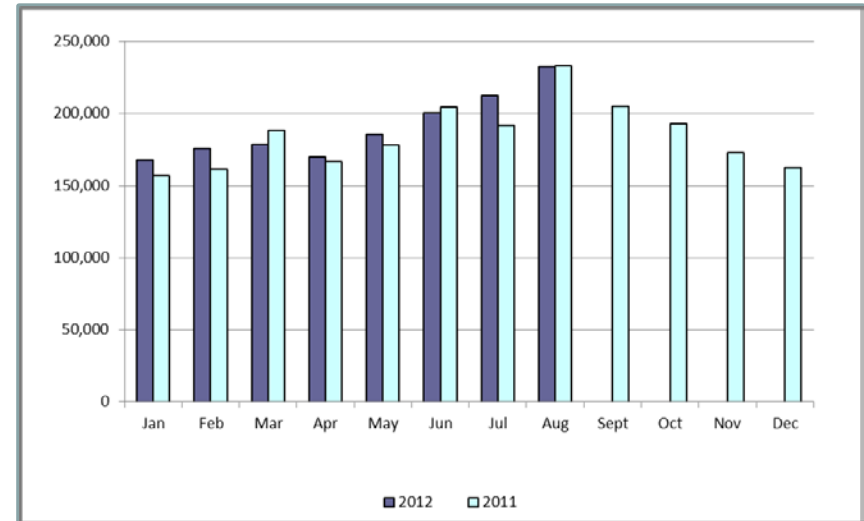
| Transaction Type | Year-To-Date | | Transactions Completed | |
|-------------------------------------|-------------------|------------------|------------------------|----------------|
| | August 2012 | August 2011 | August 2012 | August 2011 |
| Switches | 677,807 | 548,504 | 89,052 | 90,927 |
| Move - Ins | 1,523,022 | 1,481,144 | 232,716 | 233,248 |
| Move - Outs | 750,930 | 752,732 | 114,124 | 108,570 |
| Continuous Service Agreements (CSA) | 504,027 | 249,338 | 188,159 | 32,589 |
| Mass Transitions | 5,518 | 22,056 | 0 | 0 |
| Total | 3,461,304 | 3,053,774 | 624,051 | 465,334 |
| | | | | |
| Total since June 1, 2001 | 48,386,148 | | | |

Retail Transaction Volumes – Summary – August 2012

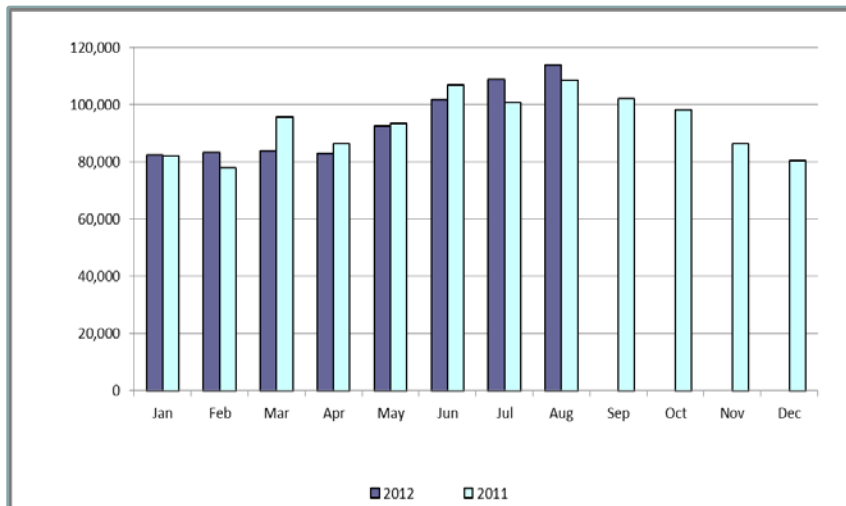
Switches



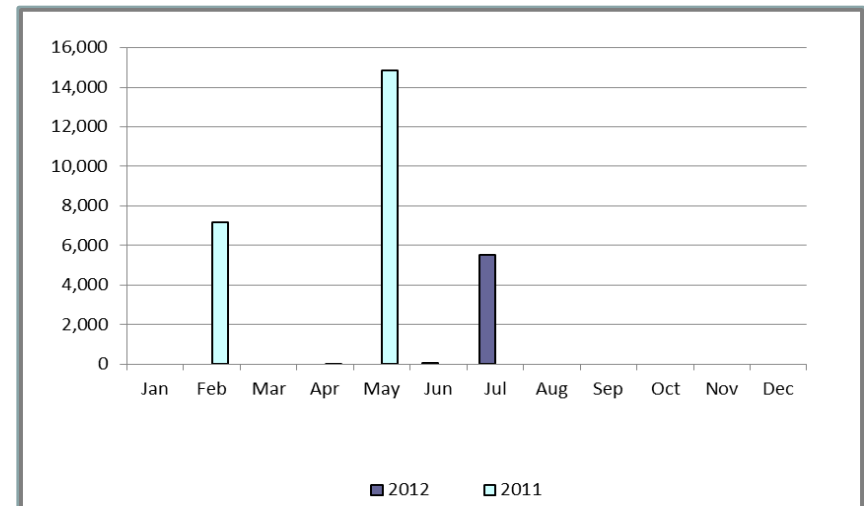
Move-Ins



Move-Outs

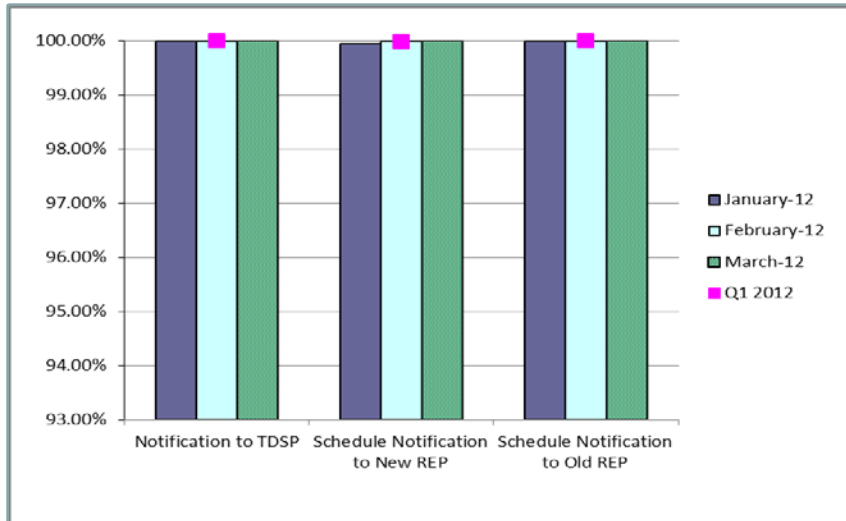


Mass Transition

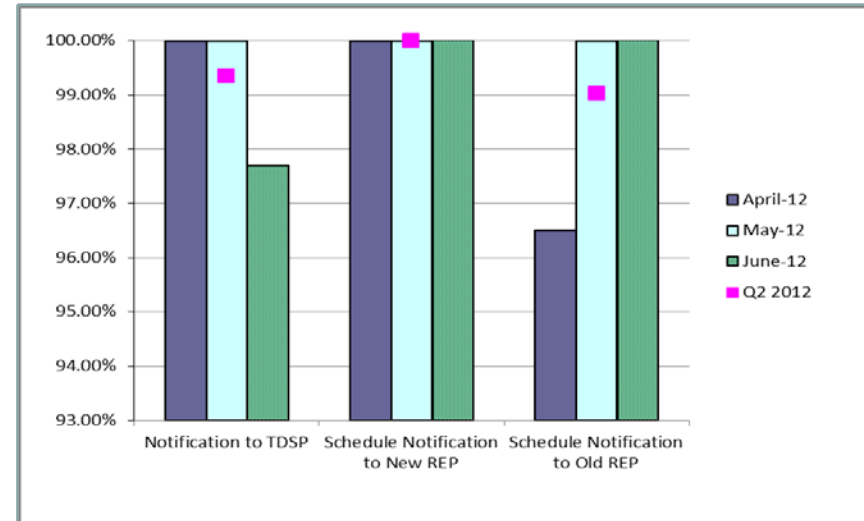


Retail Performance Measures (Switch) – August 2012

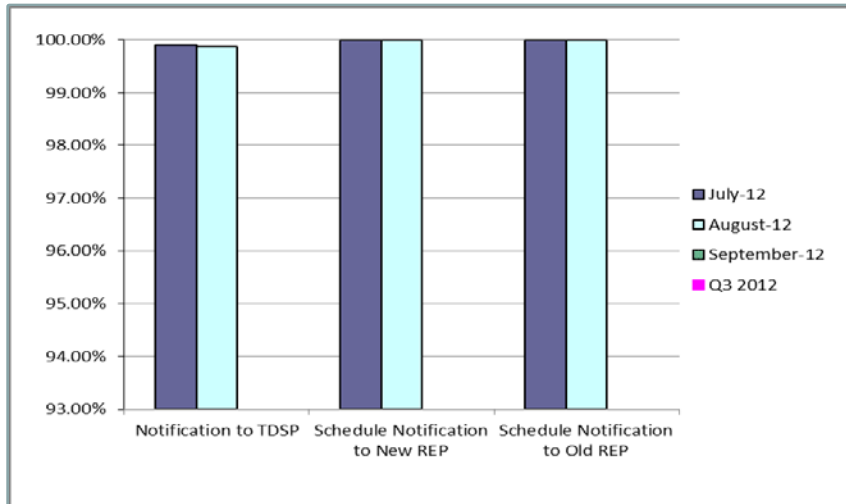
1st Quarter



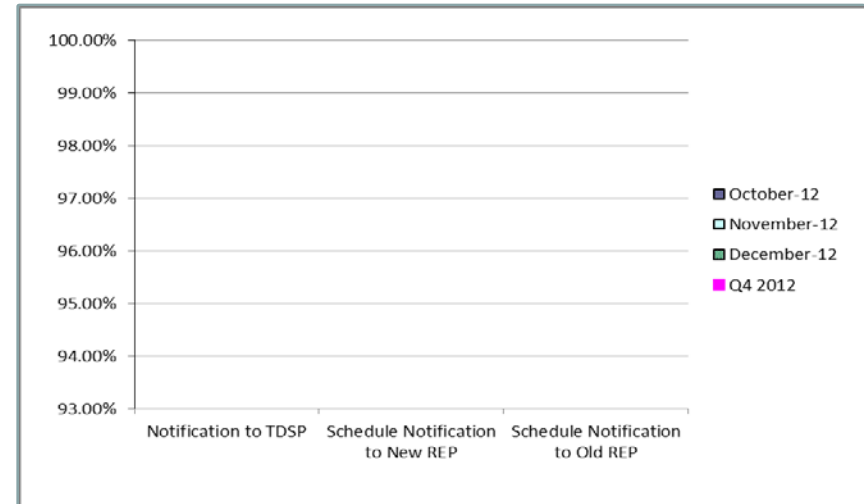
2nd Quarter



3rd Quarter

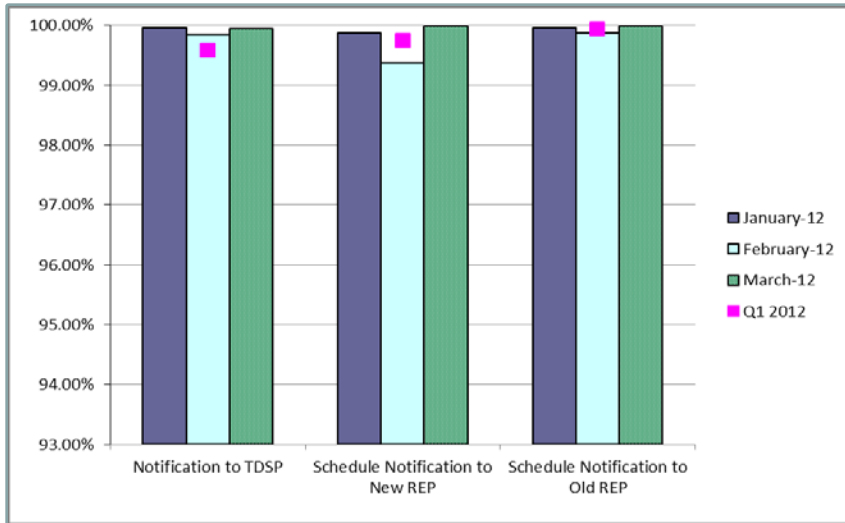


4th Quarter

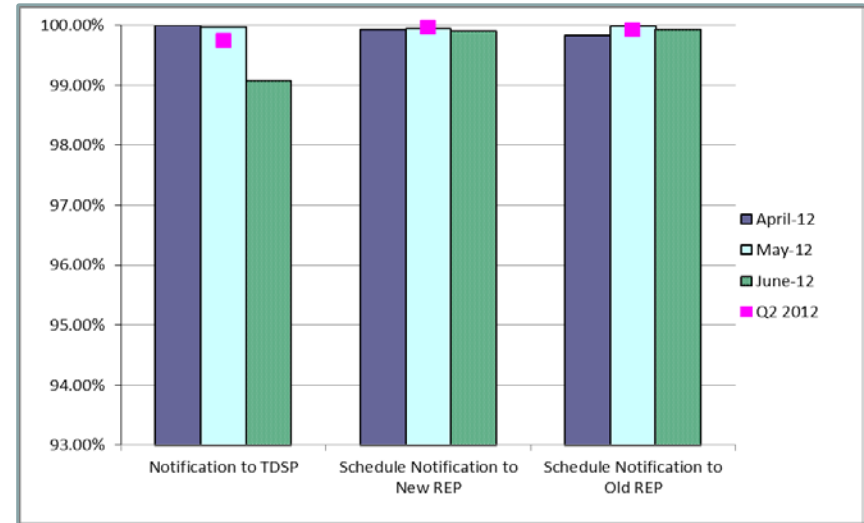


Retail Performance Measures (Priority Move-In) – August 2012

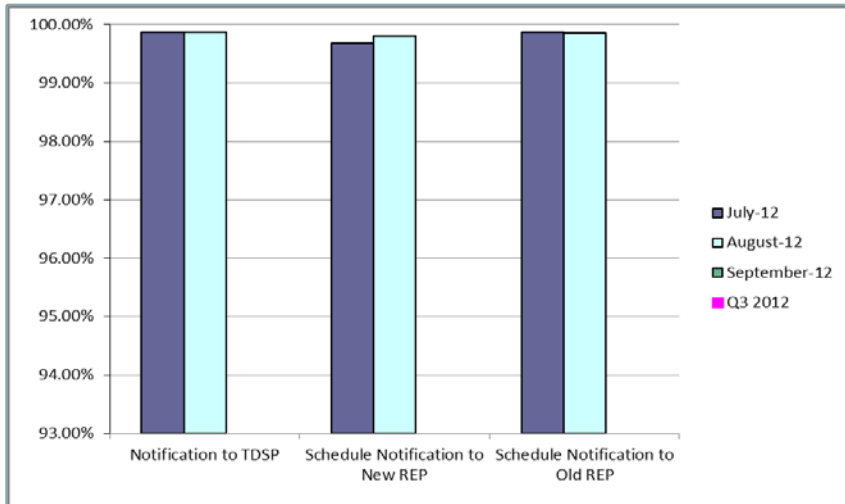
1st Quarter



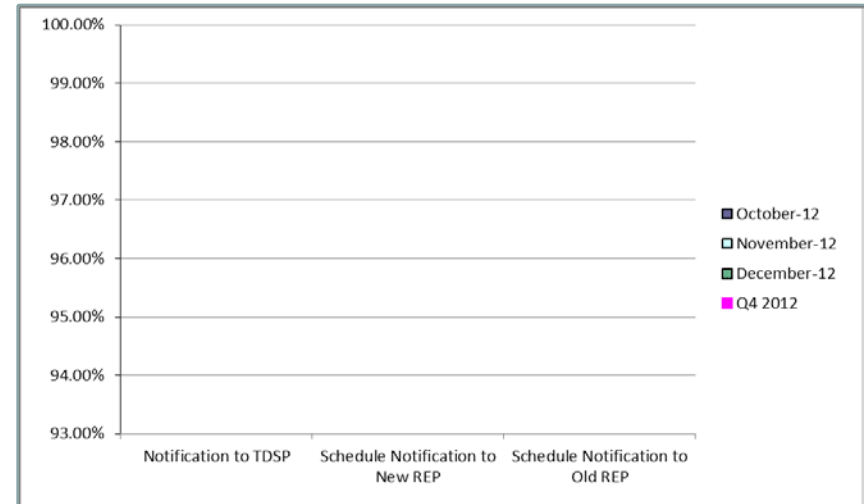
2nd Quarter



3rd Quarter

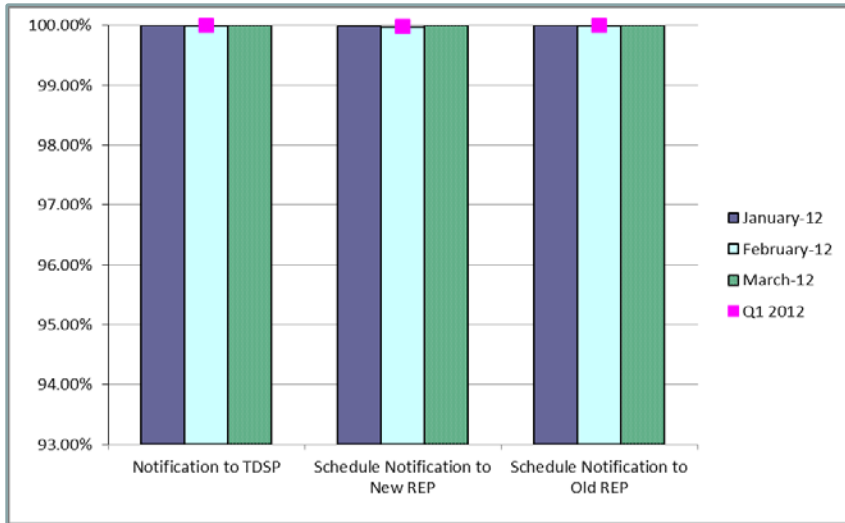


4th Quarter

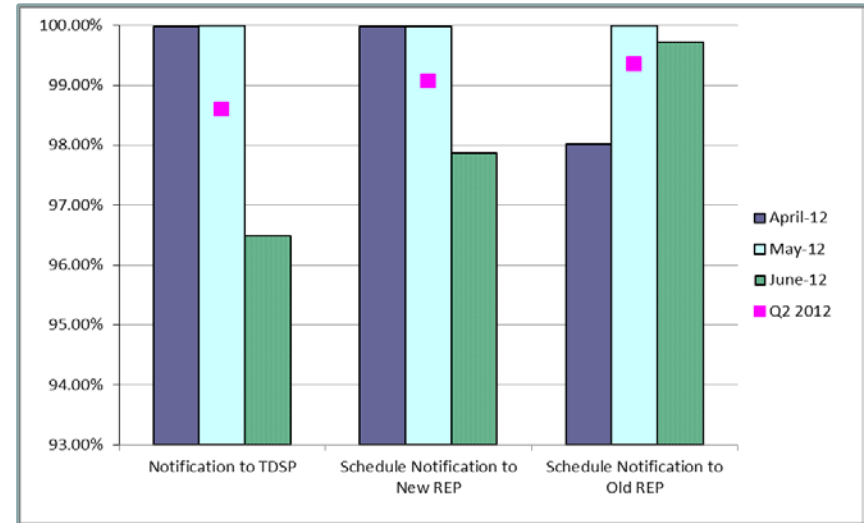


Retail Performance Measures (Standard Move-In) – August 2012

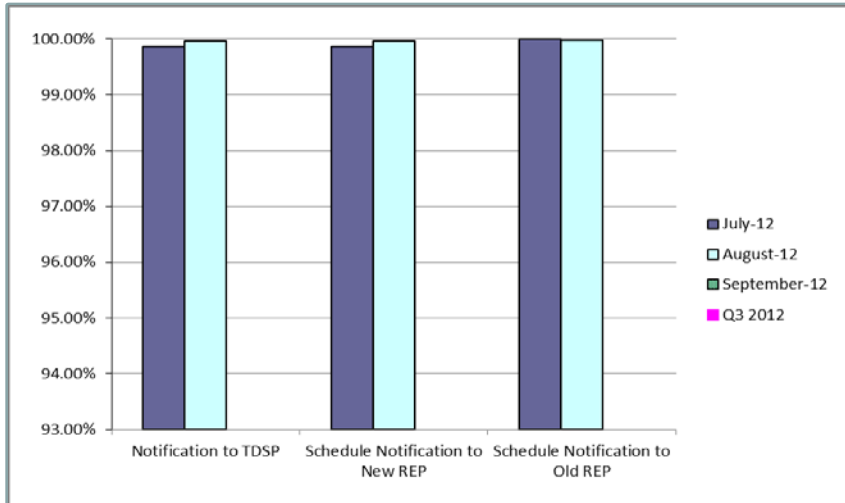
1st Quarter



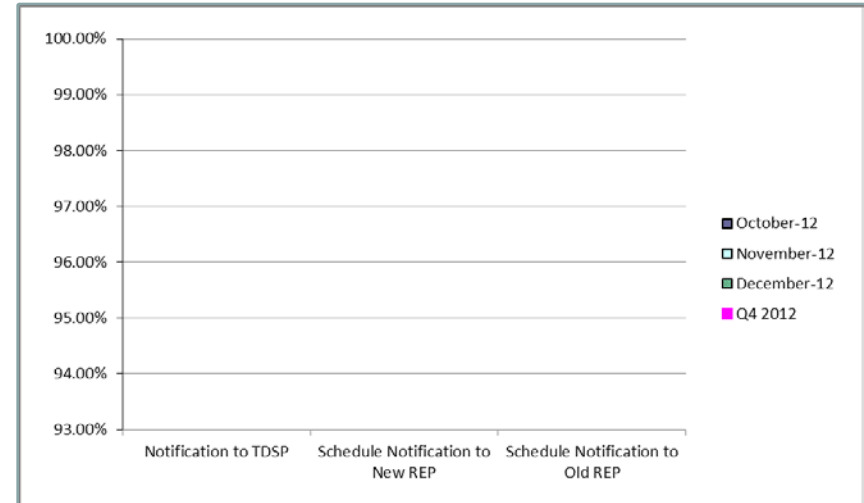
2nd Quarter



3rd Quarter



4th Quarter





Projects Report

ERCOT Portfolio Stoplight Report (as of 9/13/2012)

| Project Number | Project Name | Phase | Baseline Phase Start | Baseline Phase Finish | Scheduled Phase Finish | Schedule Status | Sum of 2012 Budgets | 2012 Forecast Spend | 2012 Variance | Sum of Total Budgets | Total Forecast Spend | Total Variance |
|--|---|------------|----------------------|-----------------------|------------------------|-----------------|----------------------|----------------------|---------------|----------------------|----------------------|----------------|
| PROJECTS IN FLIGHT (Count = 48) Sorted by Phase / Project Num | | | | | | | \$ 14,592,196 | \$ 12,810,165 | 12% | \$ 27,615,059 | \$ 26,709,446 | 3% |
| NPRR463 | CRR Auction Structure Enhancements | Initiation | | | | | | | 8% | | | 0% |
| TBD | MarkeTrak Upgrade and Enhancements (Phase 2) | Initiation | | | | | | | 0% | | | 0% |
| TBD | NMMS Upgrade | Initiation | | | | | | | 0% | | | 0% |
| 017-01 | Oracle 11g Upgrade | Planning | 4/11/2012 | 9/19/2012 | 9/14/2012 | 3% | | | 18% | | | 0% |
| 038-01 | Macomber Map NERC SA/Compliance Enhancements | Planning | 3/29/2012 | 8/15/2012 | 9/13/2012 | 8 -20% | | | 8 -49% | | | 3% |
| 043-01 | Met Center Lease Reconfiguration | Planning | 6/27/2012 | 9/19/2012 | 9/19/2012 | 0% | | | -2% | | | -2% |
| 047-01 | CMS and MIR Replacement | Planning | 5/31/2012 | 12/19/2012 | 12/20/2012 | 0% | | | 24% | | | -1% |
| 052-01 | EMS Upgrade | Planning | 7/25/2012 | 1/31/2013 | 1/29/2013 | 1% | | | 13% | | | 0% |
| 055-01 | Siebel Upgrade 8.x | Planning | 8/15/2012 | 1/11/2013 | 1/11/2013 | 0% | | | 6% | | | 0% |
| 057-01 | EPS Metering DB Redesign | Planning | 7/5/2012 | 9/19/2012 | 9/21/2012 | -2% | | | 26% | | | 26% |
| NPRR260 | Providing Access to MIS Secure Area to MIS Registered Users | Planning | 8/2/2012 | 10/3/2012 | 10/3/2012 | 0% | | | 54% | | | 0% |
| NPRR377 | Alternate Inputs to Base Point Deviation Charge | Planning | 8/8/2012 | 10/3/2012 | 10/3/2012 | 0% | | | 3% | | | 0% |
| NPRR397 | Balance of the Day Ancillary Service Market | Planning | 8/29/2012 | 9/19/2012 | 9/19/2012 | 0% | | | 0% | | | 0% |
| NPRR407 | Credit Monitoring Posting Requirements | Planning | 9/5/2012 | 9/19/2012 | 9/19/2012 | 0% | | | 0% | | | 0% |
| NPRR469 | Modifications to CCTs | Planning | 9/5/2012 | 9/19/2012 | 9/19/2012 | 0% | | | 0% | | | 0% |
| SCR768 | Automatic Non-Spin Redeployment and Deployment Based on Resource Availability | Planning | 8/29/2012 | 9/19/2012 | 9/19/2012 | 0% | | | 0% | | | 0% |
| 006-01 | SAGE (System Administrator Gateway Environment) | Execution | 5/31/2012 | 12/5/2012 | 12/11/2012 | -3% | | | 6% | | | 1% |
| 009-01 | Compliance Software Tool | Execution | 12/1/2011 | 11/30/2012 | 12/13/2012 | -3% | | | 1% | | | 8% |
| 014-01 | Implementation of NPRR347 and NPRR400 | Execution | 3/29/2012 | 11/23/2012 | 11/23/2012 | 0% | | | 0% | | | 1% |
| 016-01 | ADP-IDM Interface | Execution | 5/23/2012 | 11/7/2012 | 11/7/2012 | 0% | | | 1% | | | 1% |
| 019-01 | ERCOT Website Enhancements - 2012 | Execution | 3/8/2012 | 12/26/2012 | 12/13/2012 | 4% | | | 0% | | | 3% |
| 020-01 | CIM Upgrade for NMMS | Execution | 6/14/2012 | 1/9/2013 | 1/9/2013 | 0% | | | 12% | | | -2% |
| 021-01 | Incremental Update Capability - Phase 1 | Execution | 3/23/2012 | 1/2/2013 | 1/2/2013 | 0% | | | 35% | | | 15% |
| 029-01 | Capital Efficiencies and Enhancements | Execution | 1/1/2012 | 12/31/2012 | 12/31/2012 | 0% | | | 0% | | | 0% |
| 030-01 | ITRON Load Forecast | Execution | 6/27/2012 | 11/21/2012 | 11/21/2012 | 0% | | | 0% | | | 0% |
| 037-01 | SMTNET Improvements | Execution | 6/20/2012 | 9/29/2012 | 9/28/2012 | 0% | | | 0% | | | 0% |
| 042-01 | CRR Upgrade to v12.3 | Execution | 5/16/2012 | 2/18/2013 | 2/18/2013 | 0% | | | 21% | | | -2% |
| 045-01 | UC4 (AppWorx) Automation Upgrade v8 | Execution | 6/27/2012 | 11/9/2012 | 11/2/2012 | 5% | | | 32% | | | 32% |
| 046-01 | MAI Conversion to IGRID | Execution | 8/2/2012 | 12/31/2012 | 12/25/2012 | 3% | | | -3% | | | -3% |
| 048-01 | TSAT Wind Model | Execution | 8/16/2012 | 5/31/2013 | 5/27/2013 | 1% | | | 5% | | | 0% |
| 049-01 | Contingency Functionality Enhmt. | Execution | 7/12/2012 | 11/28/2012 | 11/28/2012 | 0% | | | 9% | | | 0% |
| 10052_01 | Settlement System Upgrade | Execution | 1/25/2012 | 12/30/2014 | 12/30/2014 | 0% | | | 34% | | | 4% |
| 2012 PC | Program Control Project | Execution | 1/1/2012 | 12/31/2012 | 12/31/2012 | 0% | | | 29% | | | 29% |
| 90006_02 | Information Lifecycle Mgmt - Mkt Systems, Archive, Reporting | Execution | 4/22/2011 | 12/4/2013 | 12/9/2013 | 0% | | | 55% | | | 9% |
| 99912 | Minor Cap - Critical - 2012 | Execution | 1/1/2012 | 12/31/2012 | 12/31/2012 | 0% | | | 4 -44% | | | 4 -44% |
| NPRR313 | Updating the Term Resource Plan to Current Operating Plan / Availability Plan | Execution | 8/22/2012 | 12/21/2012 | 12/26/2012 | -4% | | | 7% | | | 7% |
| NPRR322 | Real-Time PTP Option Modeling | Execution | 8/1/2012 | 12/15/2012 | 12/15/2012 | 0% | | | 0% | | | 0% |
| NPRR348 | Generation Resource Start-Up and Shut-Down Process | Execution | 3/29/2012 | 9/26/2012 | 9/26/2012 | 0% | | | 29% | | | 29% |
| NPRR351 | SCED Look-Ahead Step 1: Pricing | Execution | 1/25/2012 | 7/31/2012 | 7/30/2012 | 0% | | | 32% | | | 41% |
| NPRR354 | Revisions to Non-Spin Performance Criteria Language and Provision for ICCP Telemetry of Non-Spin Deployment | Execution | 3/29/2012 | 8/4/2012 | 8/16/2012 | 8 -9% | | | 39% | | | 39% |
| NPRR357 | Revisions to Collateral Requirements Concerning CRR Auctions | Execution | 4/19/2012 | 10/17/2012 | 10/23/2012 | 8 -3% | | | 8 -11% | | | 8 -11% |
| NPRR365 | Change in Resource Outage Approvals from Eight to 45 Days | Execution | 6/1/2012 | 11/21/2012 | 11/21/2012 | 0% | | | 0% | | | 12% |
| NPRR379 | EILS Dispatch Sequence and Performance Criteria Upgrades | Execution | 4/16/2012 | 6/26/2012 | 6/29/2012 | -4% | | | 9% | | | 9% |
| NPRR382 | Verbal RUC Committed or Decommitted Resources Report | Execution | 5/30/2012 | 9/19/2012 | 9/11/2012 | 7% | | | 29% | | | 29% |
| NPRR383 | Unconfirmed Trades Reports | Execution | 6/20/2012 | 9/14/2012 | 9/14/2012 | 0% | | | 20% | | | 20% |
| NPRR422 | Public DAM Shift Factors | Execution | 7/3/2012 | 8/29/2012 | 8/29/2012 | 0% | | | 0% | | | 0% |
| NPRR442 | Energy Offer Curve Requirement for Generation Resources Providing Reliability Must-Run Service | Execution | 7/3/2012 | 8/29/2012 | 8/29/2012 | 0% | | | 51% | | | 0% |
| SCR760 | Recommended Changes Needed for Information Model Mgr and Topology Processor for Planning Models | Execution | 8/25/2011 | 7/31/2013 | 7/31/2013 | 0% | | | -1% | | | 4% |

ERCOT Portfolio Stoplight Report (as of 9/13/2012)

| Project Number | Project Name | Phase | Baseline Phase Start | Baseline Phase Finish | Scheduled Phase Finish | Schedule Status | Sum of 2012 Budgets | 2012 Forecast Spend | 2012 Variance | Sum of Total Budgets | Total Forecast Spend | Total Variance |
|--|---|-------------|----------------------|----------------------------|------------------------|-----------------|---------------------|---------------------|---------------|----------------------|----------------------|----------------|
| PROJECTS NOT YET STARTED (Count = 21) | | | Sorted by P | Forecast Start Date | | | \$ 1,570,607 | \$ 240,463 | | \$ 3,317,102 | \$ 2,817,102 | |
| NPRR416 | Removal of the RUC Clawback Charge for Resources Other than RMR Units | Not Started | Sept 2012 | | | | | | 0% | | | 0% |
| NPRR419 | Revise Real Time Energy Imbalance and RMR Adjustment Charge | Not Started | Sept 2012 | | | | | | 0% | | | 0% |
| NPRR439 | Updating a Counter-Party's Available Credit Limit for Current Day DAM | Not Started | Sept 2012 | | | | | | 0% | | | 0% |
| TBD | Planning Site Transition to MIS | Not Started | Sept 2012 | | | | | | 0% | | | 0% |
| NPRR327 | State Estimator Data Redaction Methodology | Not Started | Oct 2012 | | | | | | 0% | | | 0% |
| NPRR340 | Introduction and Definition of Duration-Limited Resources | Not Started | Oct 2012 | | | | | | | | | 0% |
| TBD | Endpoint Security Phase 2 | Not Started | Oct 2012 | | | | | | 0% | | | 0% |
| TBD | MP Online Data Entry - Ph 1 | Not Started | Oct 2012 | | | | | | 0% | | | 0% |
| NOGRR084 | Daily Grid Operations Summary Report | Not Started | Dec 2012 | | | | | | 0% | | | 0% |
| NPRR272 | Definition and Participation of Quick Start Generation Resources | Not Started | Dec 2012 | | | | | | 0% | | | 0% |
| NPRR425 | Creation of a WGR Group for GREDP and Base Point Deviation Evaluation | Not Started | Dec 2012 | | | | | | | | | 0% |
| SCR771 | ERCOT System Change Allowing Independent Master QSE to Represent Split Generation Resources | Not Started | Dec 2012 | | | | | | 0% | | | 0% |
| NOGRR093 | Synchronization with NPRR365 | Not Started | Jan 2013 | | | | | | | | | 0% |
| NPRR207 | Unit Deselection | Not Started | Jan 2013 | | | | | | | | | 0% |
| NPRR457 | Conditional TDSP ESIID Attribute Information for 814_20 Transactions | Not Started | Jan 2013 | | | | | | | | | 0% |
| TBD | MP Communications Tool | Not Started | Jan 2013 | | | | | | | | | 0% |
| TBD | OA Grid Health Operator View | Not Started | Jan 2013 | | | | | | | | | 0% |
| TBD | Secure File Transfer | Not Started | Jan 2013 | | | | | | | | | 0% |
| PRR830 NPRR269 | Reactive Power Capability Requirement | Not Started | TBD | | | | | | 100% | | | 0% |
| TBD | Data Center Growth & Asset Replacement - 2012 | Not Started | TBD | | | | | | 100% | | | 100% |
| TBD | Vulnerability Management | Not Started | TBD | | | | | | 100% | | | 0% |

ERCOT Portfolio Stoplight Report (as of 9/13/2012)

| Project Number | Project Name | Phase | Baseline Phase Start | Baseline Phase Finish | Scheduled Phase Finish | Schedule Status | Sum of 2012 Budgets | 2012 Forecast Spend | 2012 Variance | Sum of Total Budgets | Total Forecast Spend | Total Variance | |
|---|--|----------|---|-----------------------|------------------------|-----------------|---------------------|---------------------|---------------|----------------------|----------------------|----------------|-------|
| PROJECTS COMPLETED IN 2012 (Count = 24) Sorted by Project | | | Dates below are final Execution phase dates | | | | \$ 2,824,276 | \$ 3,833,555 | -35% | \$ 50,322,907 | \$ 49,227,077 | 2% | |
| 010-01 | MarkeTrak Enhancements for 4.0 | Closing | 10/26/2011 | 7/27/2012 | 7/6/2012 | 7% | | | -2% | | | 1% | |
| 011-01 | ERCOT Mobile | Complete | 3/29/2012 | 8/8/2012 | 8/8/2012 | 0% | | | 8% | | | 0% | |
| 040-01 | Lawson Upgrade to 9.0.1 | Closing | 4/18/2012 | 8/22/2012 | 8/22/2012 | 0% | | | 2 | -33% | | 2 | -33% |
| 11002_01 | Texas SET 4.0 | Closing | 7/6/2011 | 7/13/2012 | 7/13/2012 | 0% | | | 7 | -36% | | | 6% |
| 11000_01 | Data Center Buildout | Complete | 1/3/2011 | 1/31/2012 | 1/30/2012 | 0% | | | 9 | -116% | | | 1% |
| 001_47 | RARF Upgrade for Wind, Solar, and Storage Resources | Complete | 9/7/2011 | 4/30/2012 | 6/29/2012 | 2 | -25% | | 7% | | | 2 | -48% |
| 004_01 | Secure Remote Access Management (SRAM) | Complete | 12/5/2011 | 3/7/2012 | 3/7/2012 | 0% | | | 6 | -167% | | | 8% |
| 005_01 | Endpoint Security Phase 1 | Complete | 12/15/2011 | 4/25/2012 | 5/8/2012 | 2 | -9% | | 8 | -28% | | | 12% |
| 007_01 | Taylor Facility Remodel | Complete | 9/14/2011 | 1/15/2012 | 1/25/2012 | 2 | -8% | | 6 | -999% | | | 6% |
| 013_01 | MMS 2012 Release 1: NPPR321/NPPR326/NPPR355 | Complete | 12/14/2011 | 2/23/2012 | 2/23/2012 | 0% | | | 4% | | | | 5% |
| 015_01 | Outage Capacity Calculation Tool | Complete | 1/4/2012 | 4/30/2012 | 4/30/2012 | 0% | | | -1% | | | | 0% |
| 023_01 | Quality Training Database | Complete | 2/22/2012 | 5/30/2012 | 5/31/2012 | -1% | | | 10% | | | | 10% |
| 025_43 | EDW Platform Transition | Complete | 2/15/2012 | 4/30/2012 | 4/30/2012 | 0% | | | 22% | | | | 7% |
| 025_52 | HP Openview Upgrade | Complete | 11/1/2011 | 12/29/2011 | 4/1/2012 | 3 | -162% | | 5 | -9% | | | 0% |
| NPPR314 | Requirement to Post Generation Resources Temporal Constraints | Complete | 3/5/2012 | 4/29/2012 | 4/27/2012 | 3% | | | 27% | | | | 27% |
| NPPR359 | Monthly TDSP Load Report | Complete | 3/1/2012 | 5/2/2012 | 5/4/2012 | -3% | | | 5% | | | | 5% |
| NPPR360 | Summary Report of HDL and LDL | Complete | 4/18/2012 | 7/11/2012 | 7/11/2012 | 0% | | | 21% | | | | 21% |
| NPPR361 | Real-Time Wind Power Production Data Transparency | Complete | 1/11/2012 | 5/3/2012 | 5/2/2012 | 0% | | | 1 | -122% | | 1 | -122% |
| NPPR395 | CRR Auction Offer Award Disclosure | Complete | 2/29/2012 | 4/25/2012 | 4/27/2012 | -3% | | | 6% | | | | 6% |
| NPPR434 | Increase the Capacity Limitation of a Generation Resource Providing RRS | Complete | 3/7/2012 | 6/1/2012 | 5/2/2012 | 34% | | | 63% | | | | 63% |
| NPPR437 | Allow Aggregation of Multiple Generators Into A Single Resource For Mkt & Eng Modeling | Complete | 3/29/2012 | 7/4/2012 | 7/4/2012 | 0% | | | 13% | | | | 13% |
| SCR761 | Provide Price Replication Notifications via API and Provide Price Corrections via XML | Complete | 10/5/2011 | 3/2/2012 | 2/28/2012 | 2% | | | 5 | -362% | | 1 | -26% |
| SCR764 | Public Access to Select MIS Dashboards | Complete | 7/24/2011 | 12/9/2011 | 2/28/2012 | 1 | -58% | | 5 | -7% | | | -1% |
| 026_01 | Support for New Resource Types in ERCOT Systems | Canceled | 1/4/2012 | 8/1/2012 | 6/11/2012 | 24% | | | 27% | | | | 27% |

SUMMARY

| | | Sum of 2012 Budgets | 2012 Forecast Spend | Sum of Total Budgets | Total Forecast Spend |
|----|--|---------------------------------------|----------------------|----------------------|----------------------|
| 3% | KPI Budget Measure - Execution/Completed Projects | Projects In Flight \$ 14,592,196 | \$ 12,810,165 | \$ 27,615,059 | \$ 26,709,446 |
| | | Projects Not Yet Started \$ 1,570,607 | TBD | \$ 3,317,102 | TBD |
| 5% | KPI Schedule Measure - Execution/Completed Project | Projects Completed \$ 2,824,276 | \$ 3,833,555 | \$ 50,322,907 | \$ 49,227,077 |
| | | TOTAL | \$ 18,987,079 | \$ 16,643,720 | \$ 81,255,068 |
| | | 2012 Project Funding | \$ 15,000,000 | | |
| | | "Not Started" Project Demand | \$ 240,463 | | \$ 2,817,102 |

Stoplight Calculation Definitions

Schedule: Count of Execution and Completed Projects with Variance >= 10%
/ Count of Execution and Completed Projects

Budget: (Total Budget of Execution and Completed Projects
- Total Forecast Spend of Execution and Completed Projects)
/ Total Budget of Execution and Completed Projects

Footnotes

- 1 Change in design approach resulted in more funding and/or time required for delivery
- 2 Current phase took longer than expected, resulting in additional funding and/or time required
- 3 Vendor unable to complete work planned for 2011
- 4 Added scope resulted in more funding and/or time required for delivery
- 5 Labor hours planned for 2011 occurred in 2012
- 6 Purchased items planned for 2011 arrived in 2012
- 7 Contract labor replaced FTE labor (2 instances)
- 8 Current phase requiring more labor than expected, resulting in additional funding and/or time required
- 9 Invalid assumption for 2011 accounting related to treatment of prepaids and hardware installation