



ERCOT Monthly Operational Overview (June 2012)

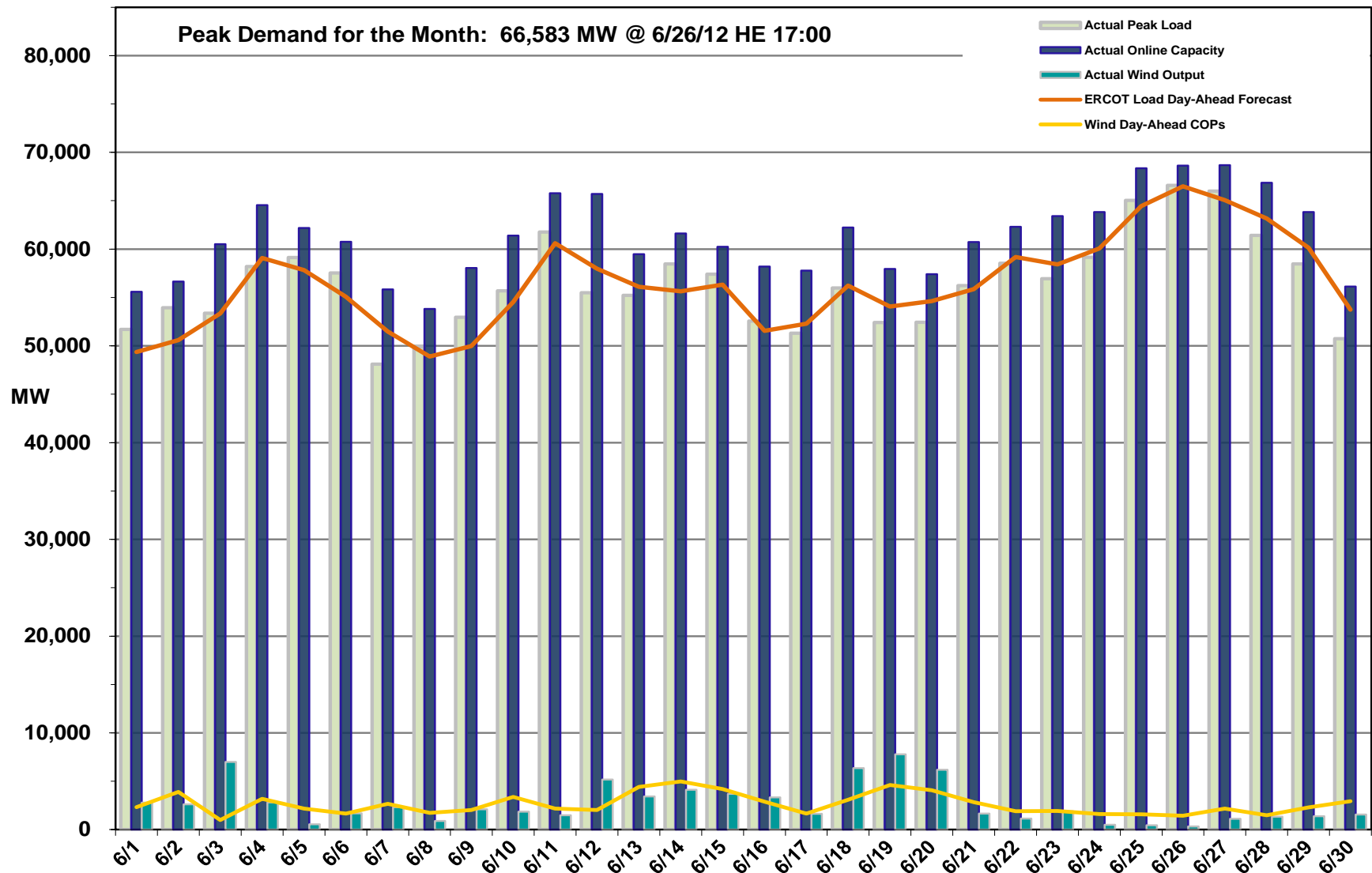
July 17, 2012



Grid Operations & Planning

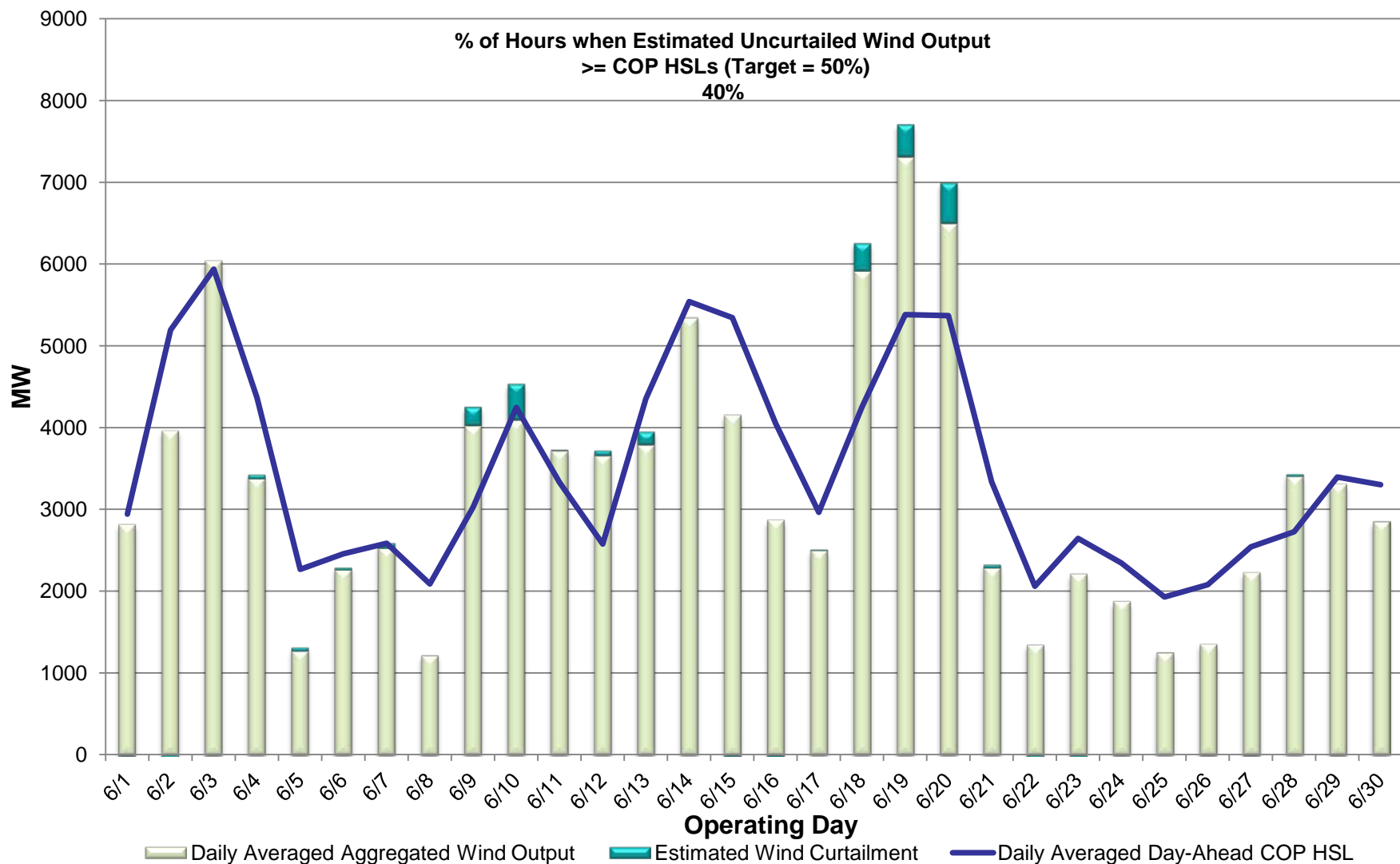
- June 2012 Operations
 - Peak Demand: Actual vs. Forecast
 - On-line Resources: Total at Peak and Wind
 - CPS1 Monthly Performance
 - Historical Peak and Minimum Loads
 - Day-Ahead Load Forecast Performance
 - Reliability Unit Commitment Capacity (RUC) by weather zone
 - Generic Transmission Limits (GTLs)
 - Advisories, Watches and EEAs
 - Significant System Incidents
- Planning Activities
 - Summary
 - Generation Interconnection Requests
 - Wind Capacity

June 2012 Daily Peak Demand: Hourly Average Actual vs. Forecast, Wind Day-Ahead COPs & On-line Capacity at Peak



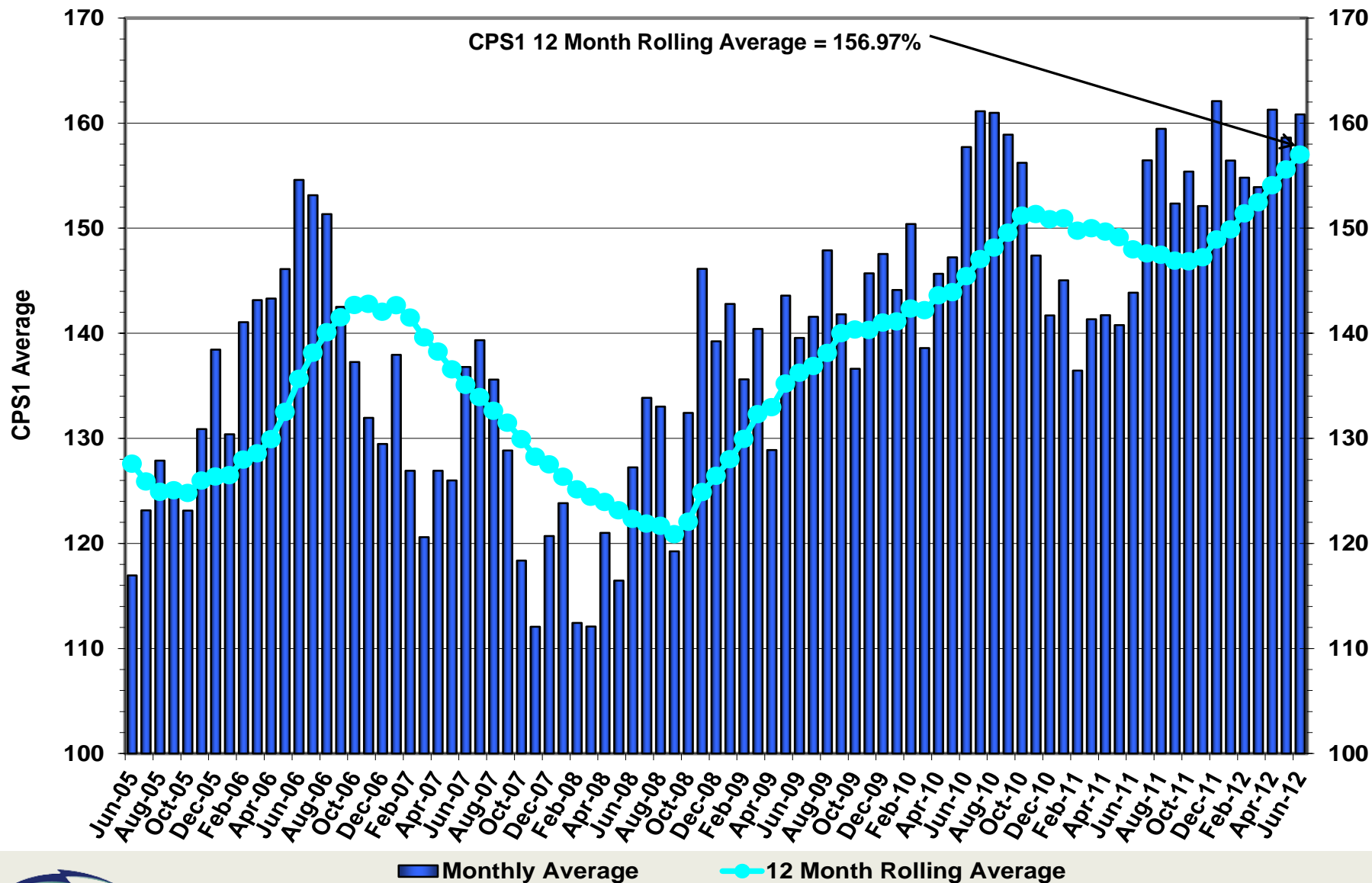
Note: All data are hourly averages during the peak load hour obtained from COPs, and EMMS.

June 2012 Actual Wind Output plus Curtailments vs. Wind Day-Ahead COPs for All Hours

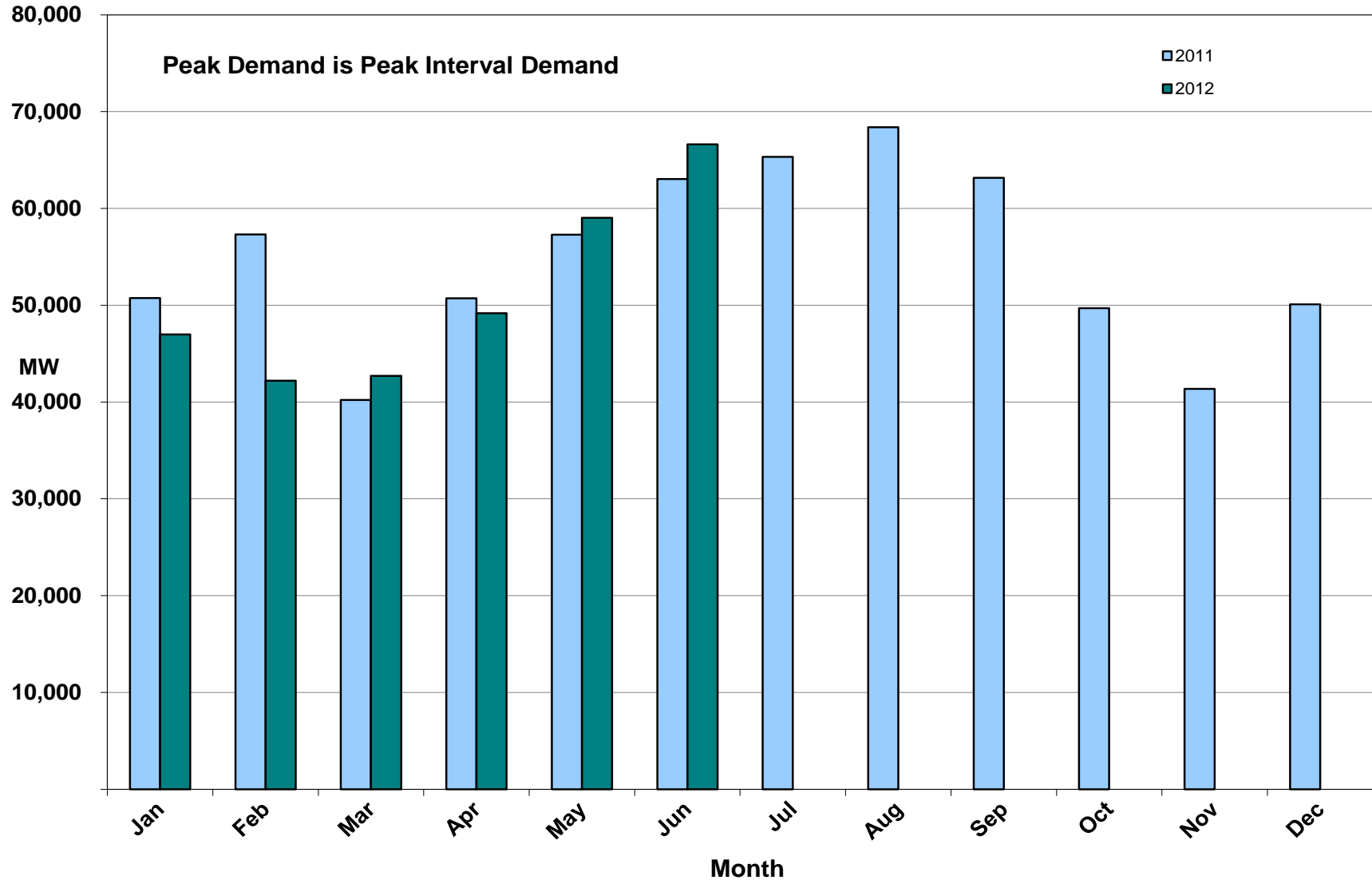


Note: QSEs must use the AWST 50% probability of exceedance forecast as the HSL in their COPs

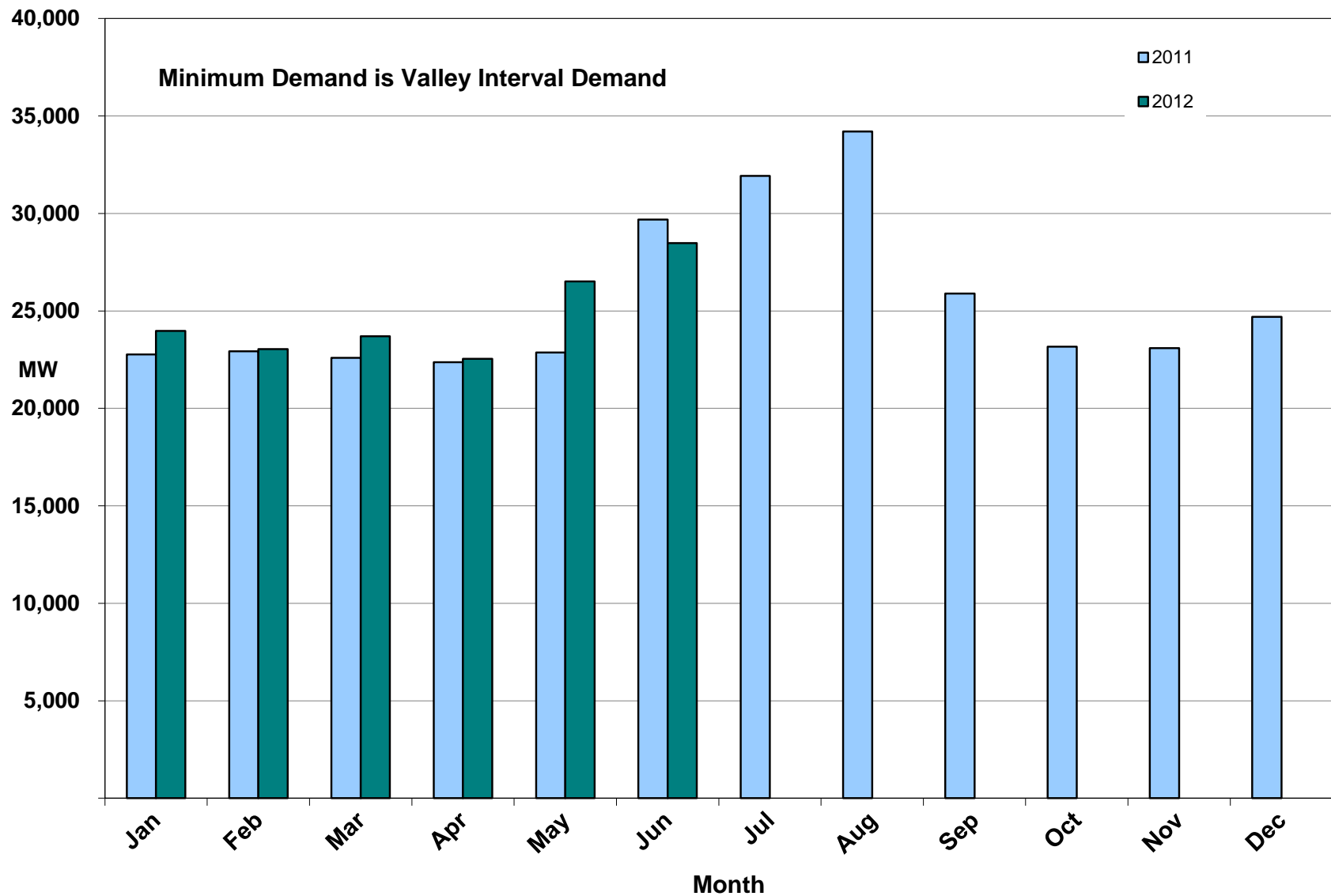
June 2012 ERCOT's CPS1 Monthly Performance



June 2012 Monthly Peak Actual Demand



June 2012 Monthly Minimum Actual Demand



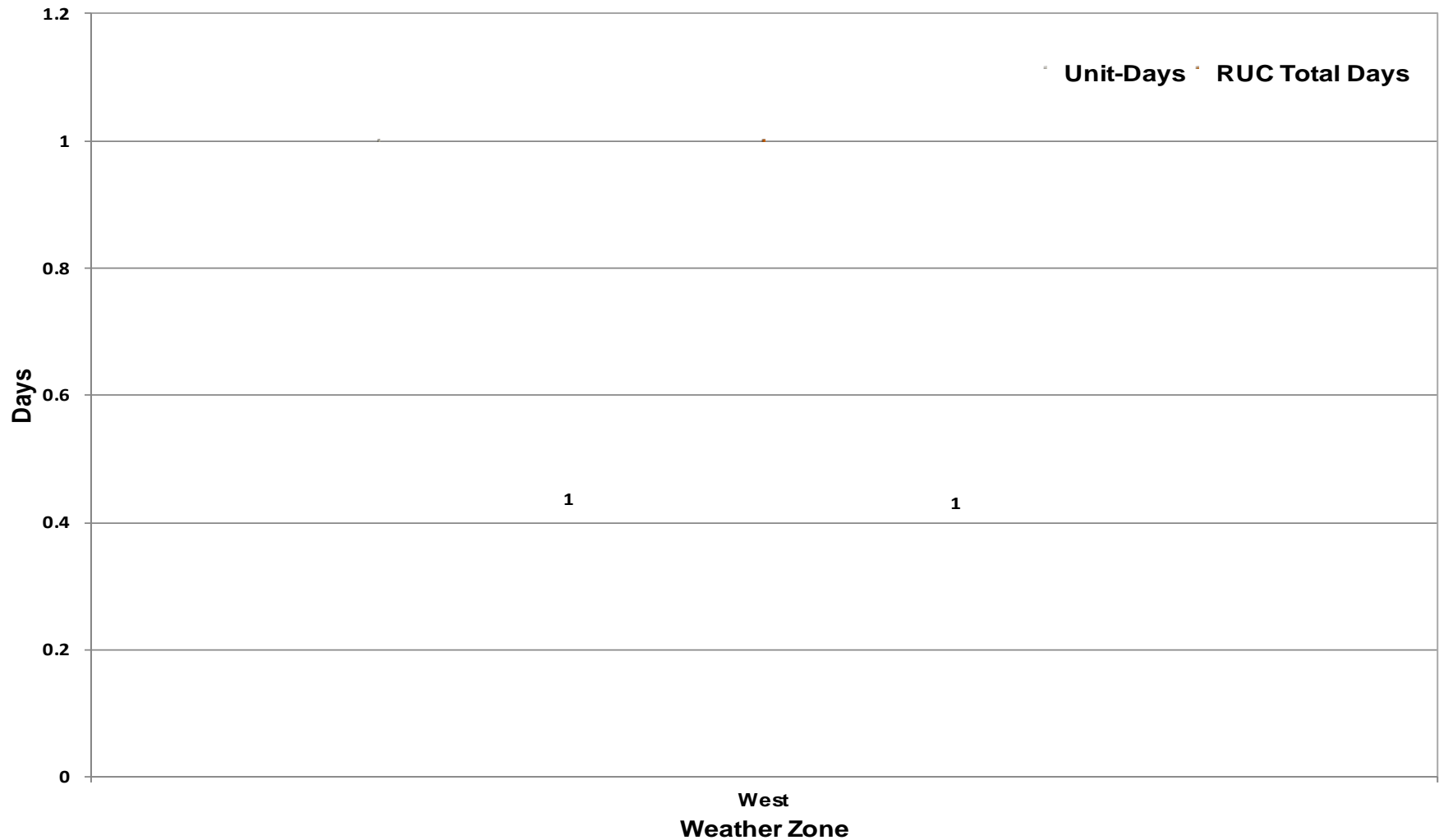
Day-Ahead Load Forecast Performance in June 2012

**Mean Absolute Percent Error (MAPE) for ERCOT Mid-Term Load Forecast (MTLF)
Run at 14:00 Day Ahead**

	2009 MAPE	2010 MAPE	2011 MAPE	2012 MAPE	Jun 2012 MAPE	
Average Annual MAPE	3.11	2.83	2.83	2.94	2.85	
Lowest Monthly MAPE	1.93	2.24	1.63	2.51	Lowest Daily MAPE	1.13 Jun – 22
Highest Monthly MAPE	4.11	3.79	3.55	3.49	Highest Daily MAPE	6.35 Jun – 12

Reliability Unit Commitment (RUC) Capacity by weather zone in June 2012

RUC Commitments by Weather Zone



June 2012 Generic Transmission Limits (GTLs)

GTLs	Jun 11 Days GTLs	Apr 12 Days GTLs	May 12 Days GTLs	Jun 12 Days GTLs	Last 12 Months Total Days (Jun11 – Jun12)
North – Houston	0	0	0	0	1
West – North	29	17	18	13 Jun(2-4,8-10,12-14,17-20)	212
Valley Import	0	0	0	0	0

GTL: A transmission flow limit more constraining than a Transmission Element's normal limit established to constrain flow between geographic areas of the ERCOT Transmission System that is used to enforce stability and voltage constraints that cannot be modeled directly in ERCOT's transmission security analysis applications.

Note: This table lists how many times a constraint has been activated to avoid exceeding a GTL limit, it does not imply an exceedance of the GTL occurred.

Advisories and Watches in June 2012

- **Advisories issued for Physical Responsive Capability (PRC) below 3000 MW.**
 - Issued for 1 Day (06/26)
- **Watches issued for Physical Responsive Capability (PRC) below 2500 MW.**
 - 0 Watch issued for PRC below 2500 MW.
- **Transmission Watches**
 - 06/10 15:44 ERCOT issued a transmission watch for Uvalde area due to low voltages.
 - 06/25 14:06 ERCOT issued a transmission watch on 138 KV system in Central Texas.
- **Energy Emergency Alerts**
 - None

Lake Levels Update – 01 July 2012

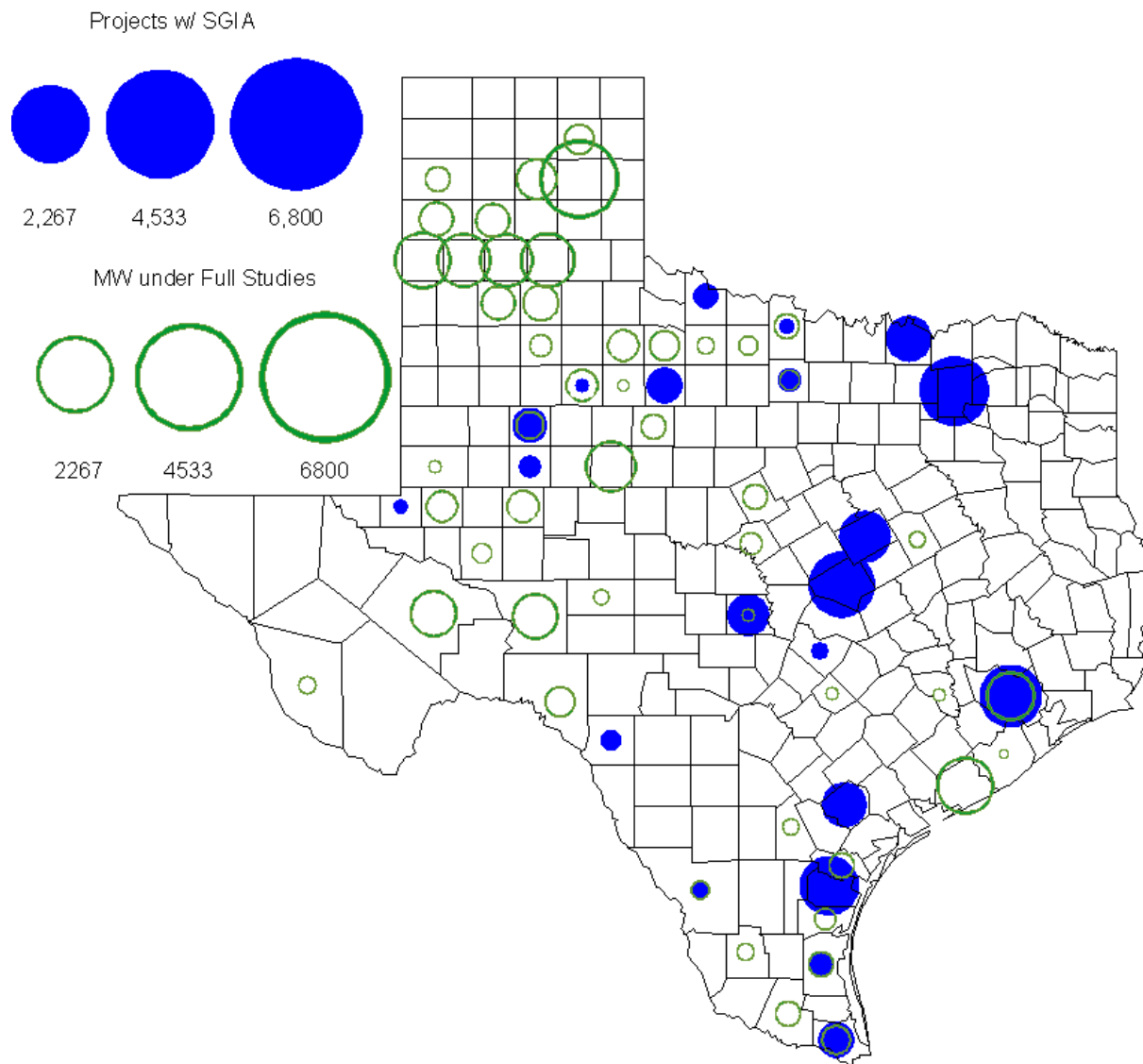
Surface Water & (MW)	*Level @ Full Conservation Pool	*Level on Jan 1, 2011	*Level on Oct 7, 2011	*Level on July 01, 2012
Lake Texana (56)	44.50	41.00	32.81	42.00
Bardwell Lake (312)	421.00	420.71	416.23	420.54
Lake Colorado City (407)	2,070.20	2057.33	2052.4	2050.73
Lake Ray Hubbard (916)	435.50	432.37	429.22	434.94
Lake Granbury (983)	693.00	691.90	686.27	691.89
Lake Houston (1016)	41.73	42.10	36.76	41.92
Twin Oaks Reservoir (1616)	400	398.87	398.27	400.02
Lake Limestone (1689)	363	359.03	354	361.44
Martin Lake (2425)	306	300.48	295.06	301.48

*** In Feet above Mean Sea Level**

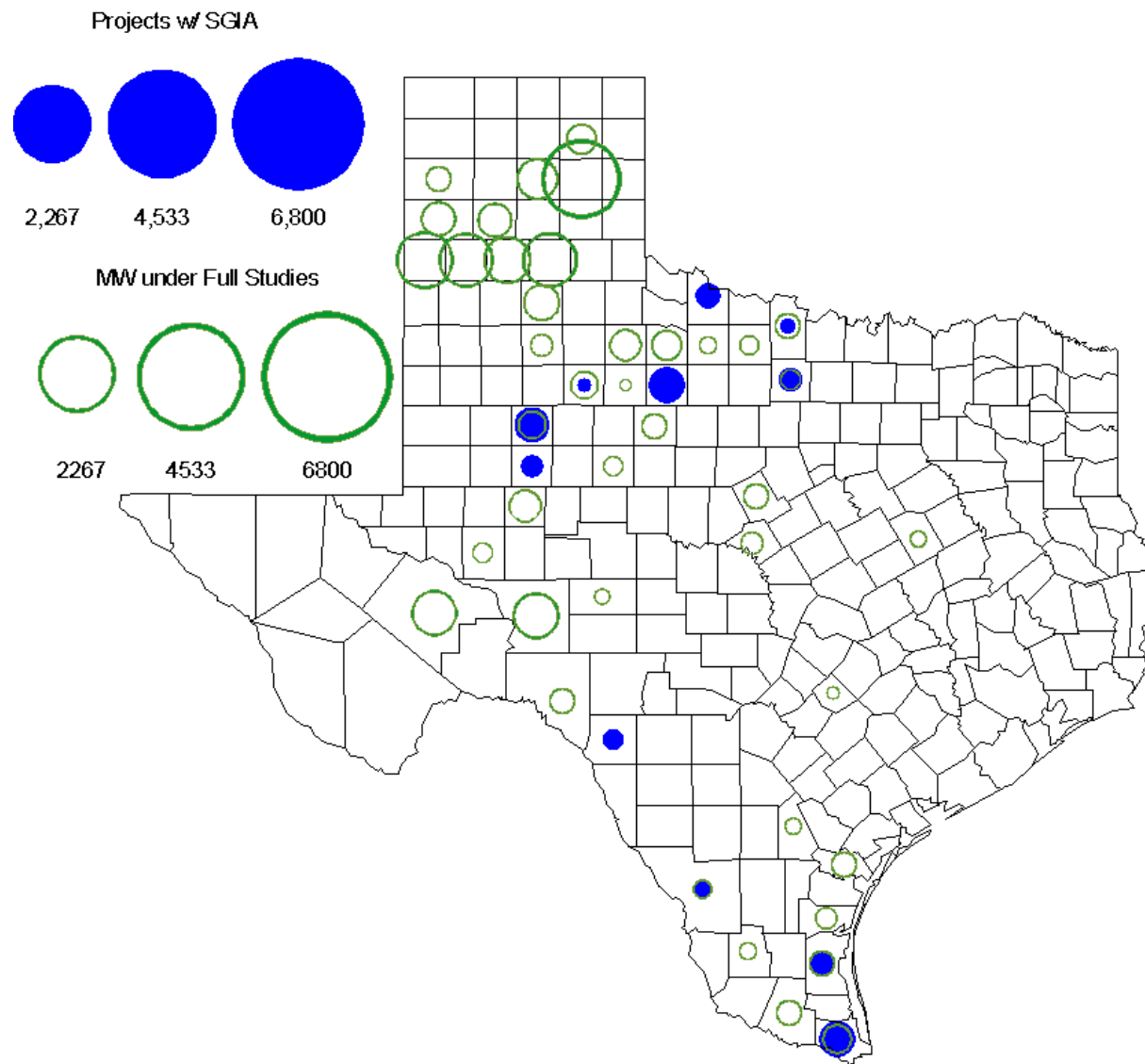
Planning Summary – June 2012

- **ERCOT is currently tracking 131 active generation interconnection requests totaling over 35,000 MW. This includes over 19,000 MW of wind generation.**
- **ERCOT is currently reviewing proposed transmission improvements with a total cost of \$95.6 Million**
- **Transmission Projects endorsed in 2012 total \$446.7 Million**
- **All projects (in engineering, routing, licensing and construction) total approximately \$9.77 Billion**
- **Transmission Projects energized in 2012 total about \$208.4 million**

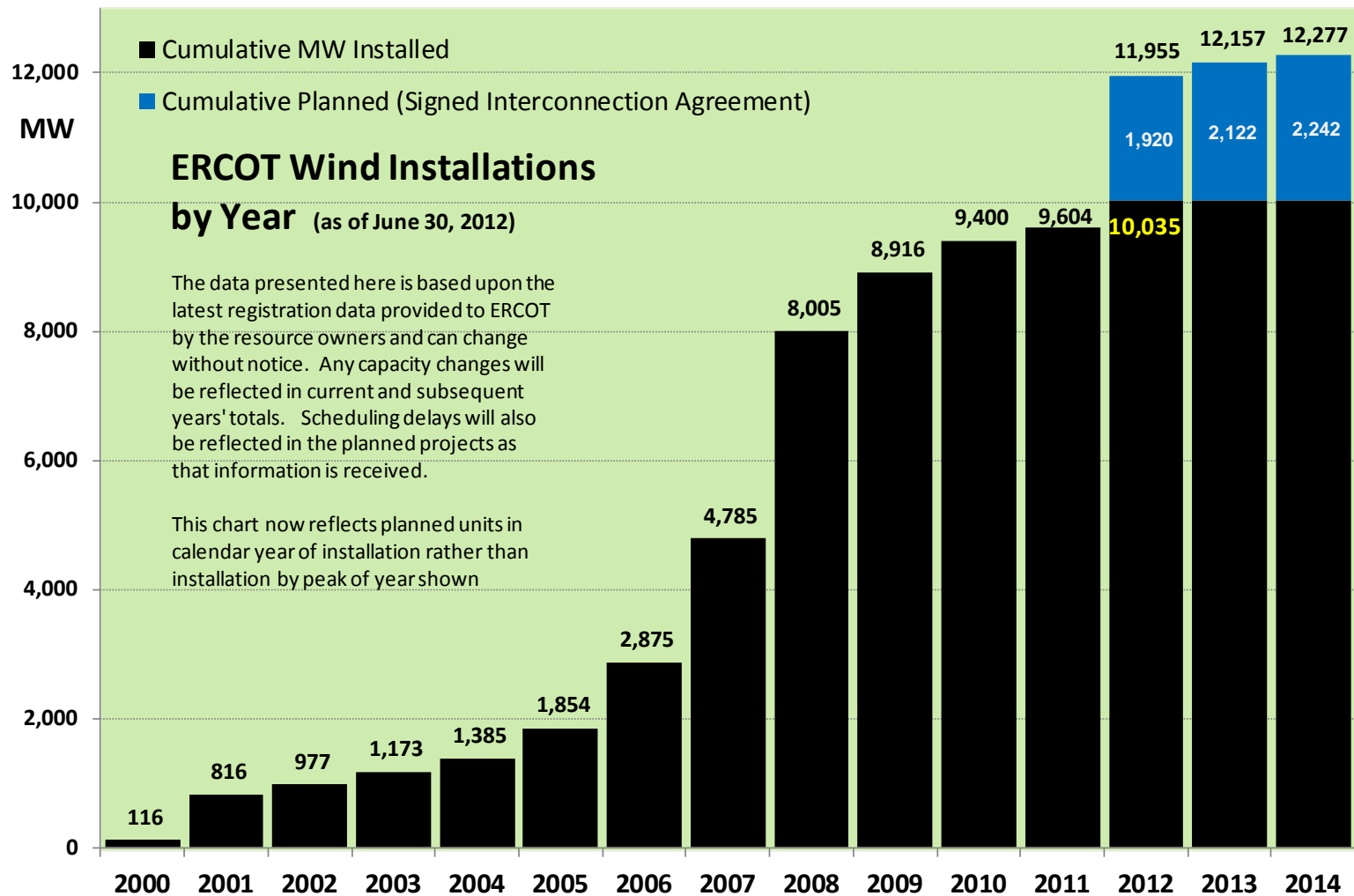
County Location of Planned Generation with Interconnection Requests (all fuels) **June 2012**



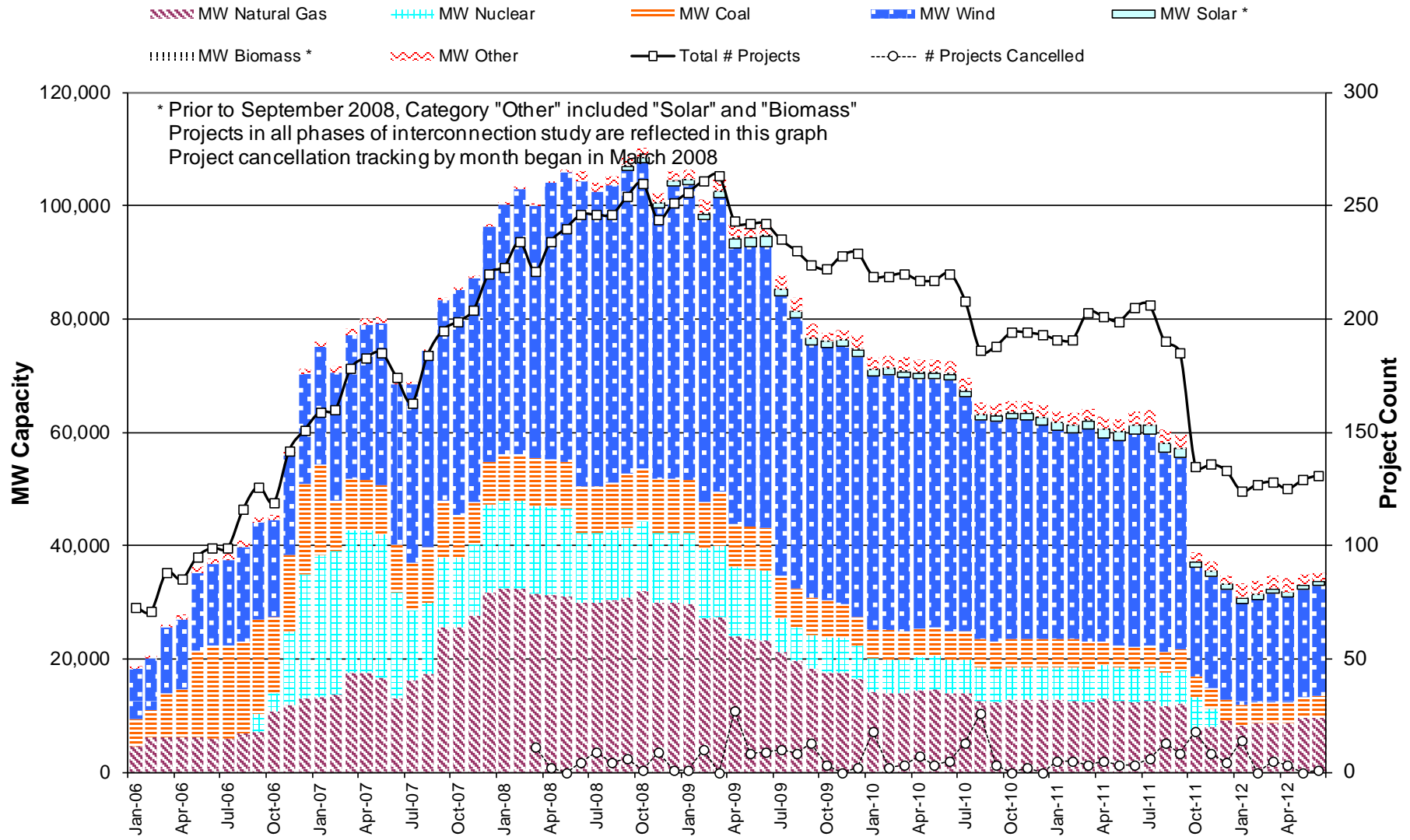
County Location of Planned Generation with Interconnection Requests (Wind) **June 2012**



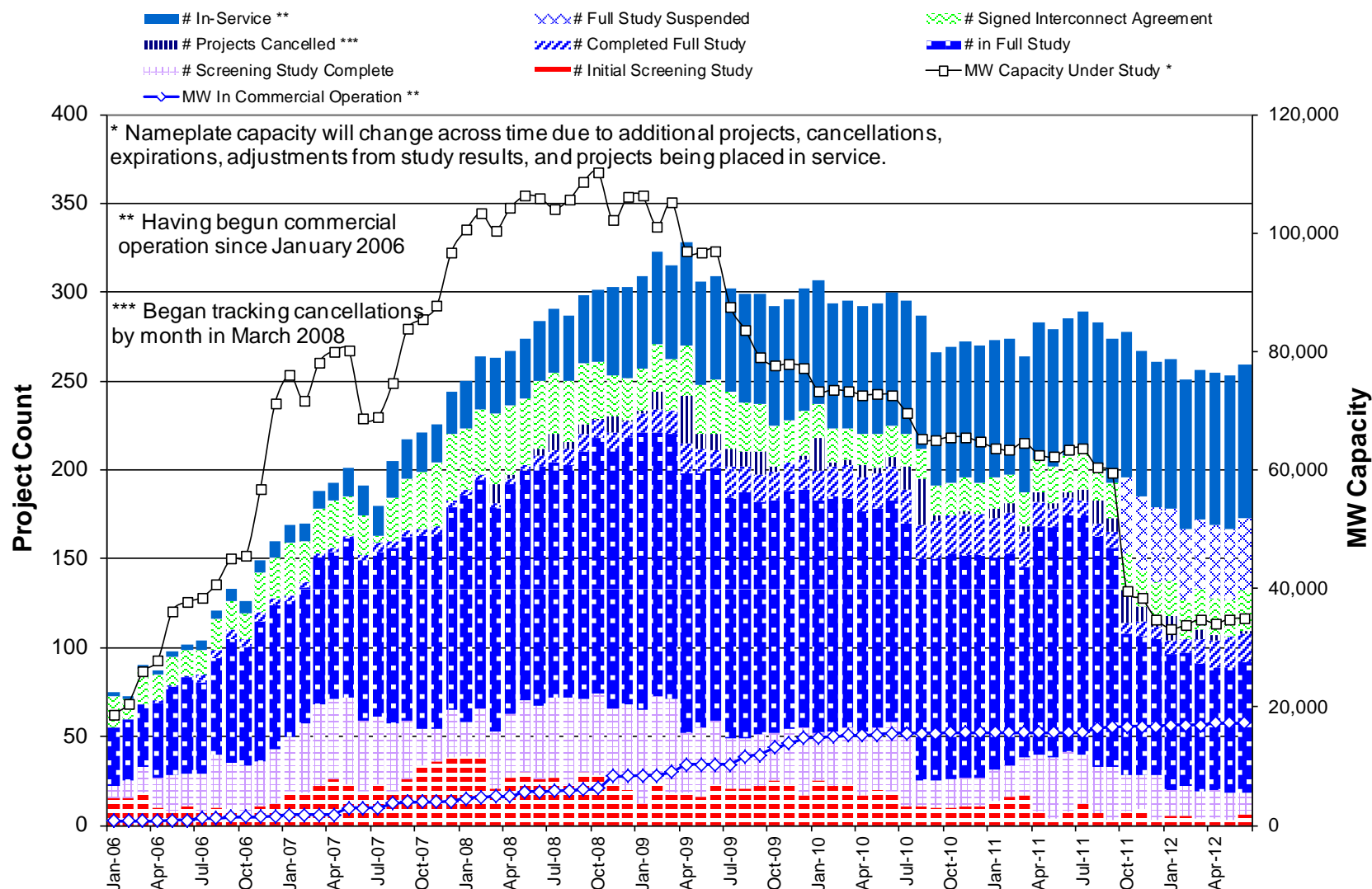
Wind Generation – June 2012



Generation Interconnection Activity by Fuel – June 2012



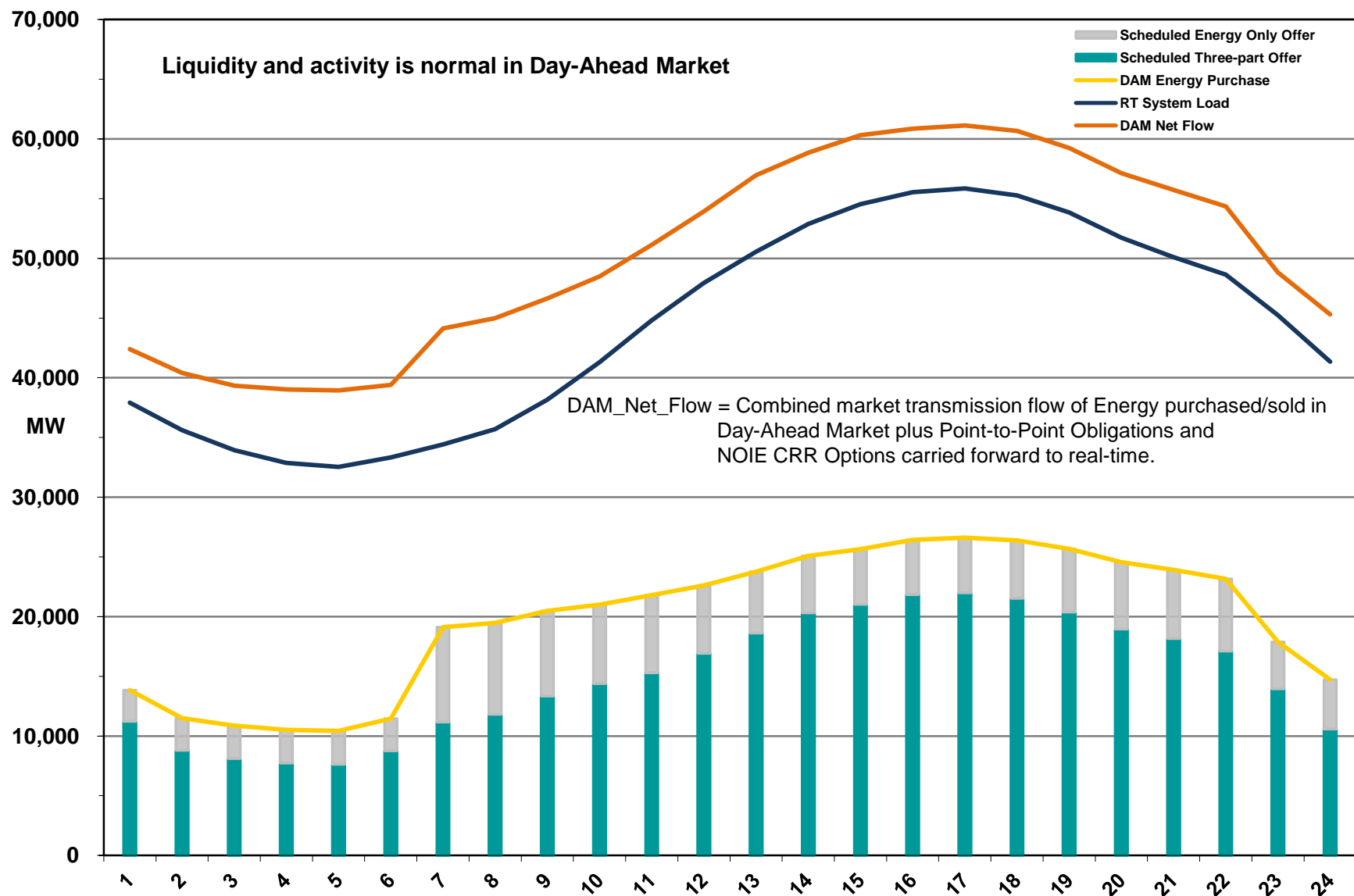
Generation Interconnection Activity by Project Phase – June 2012



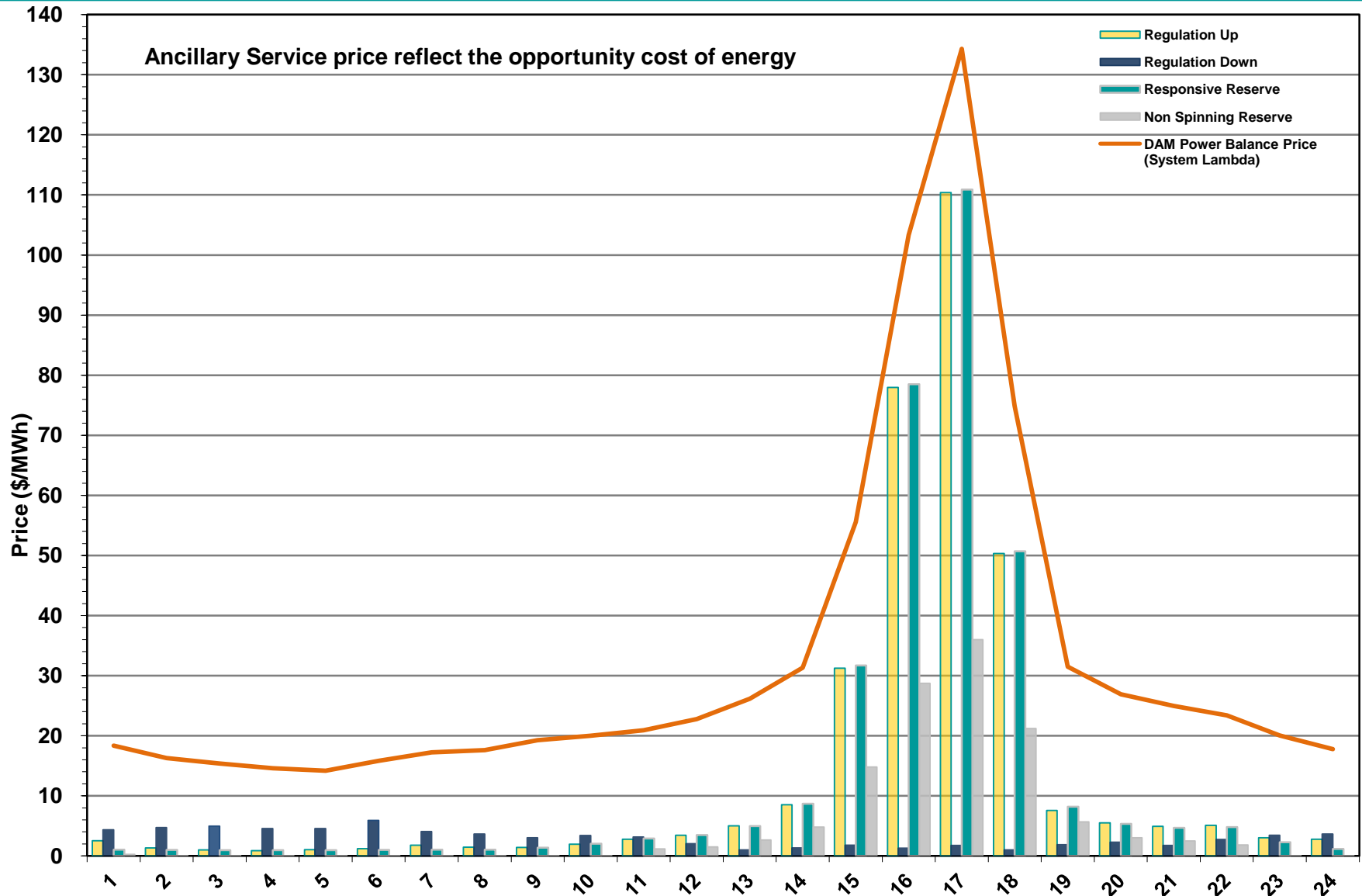


Market Operations

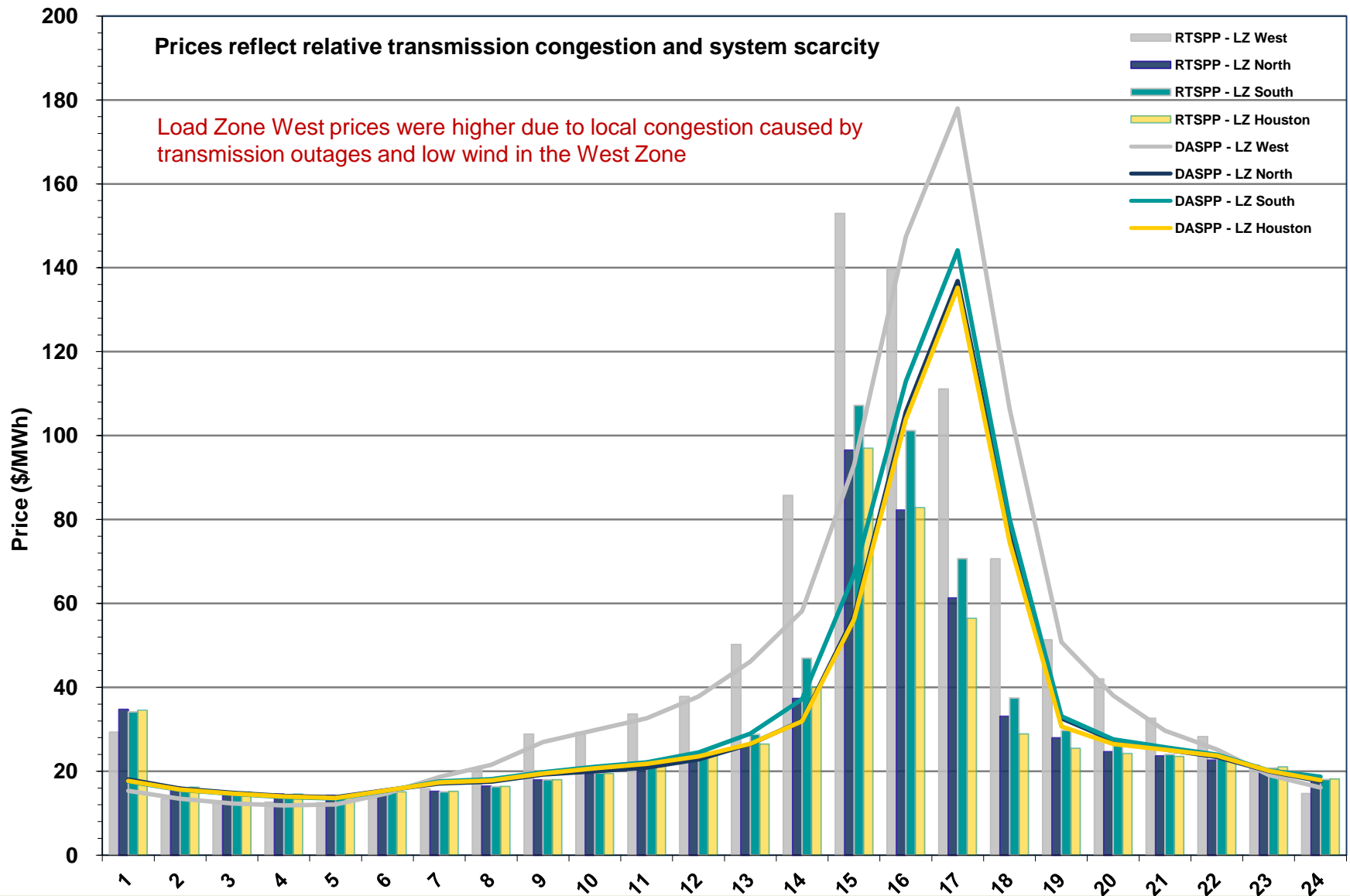
Day-Ahead Schedule – June 2012



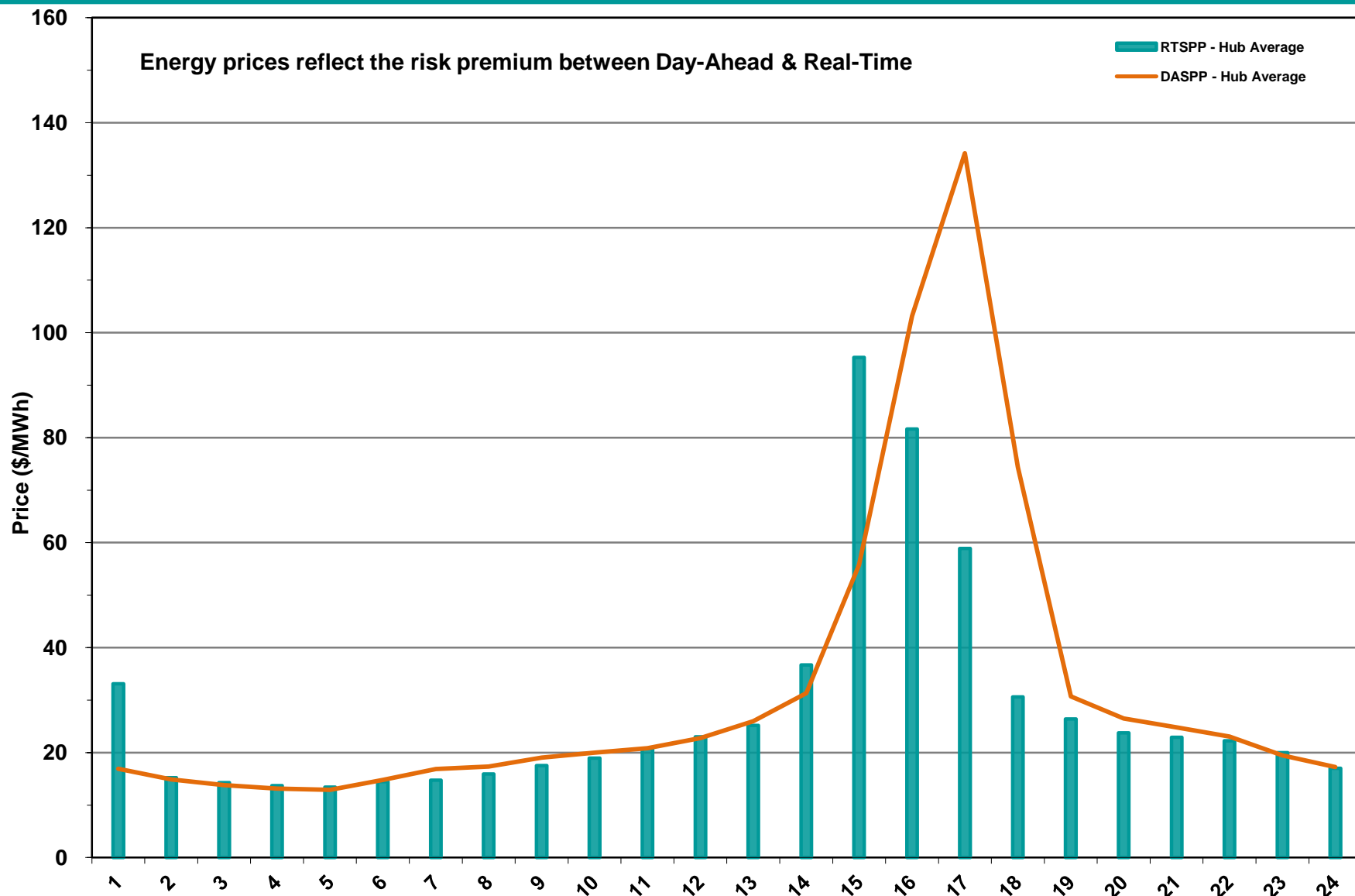
Day-Ahead Electricity And Ancillary Service Hourly Average Prices – June 2012



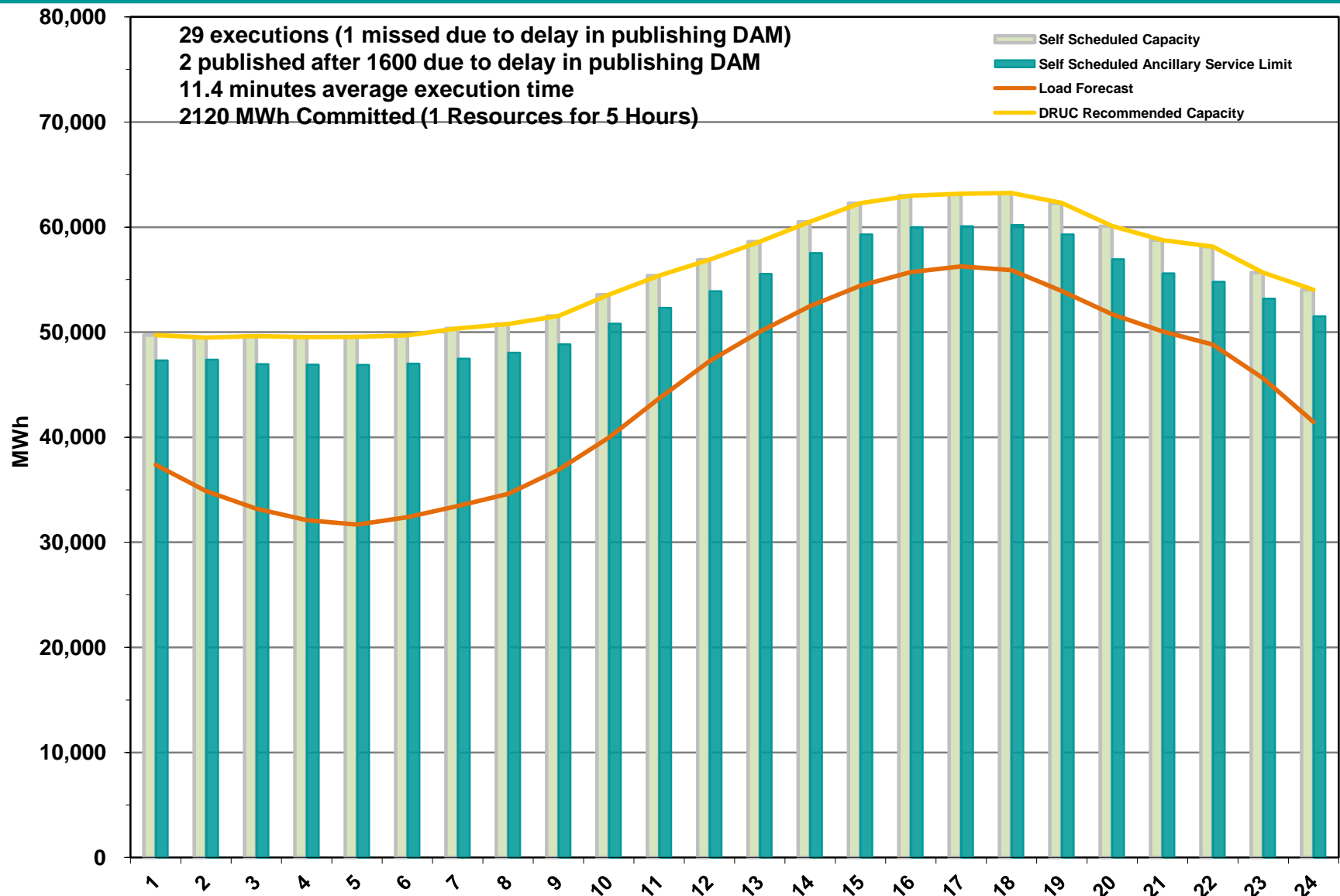
Day-Ahead Vs Real-Time Load Zone SPP (Hourly Average) - June 2012



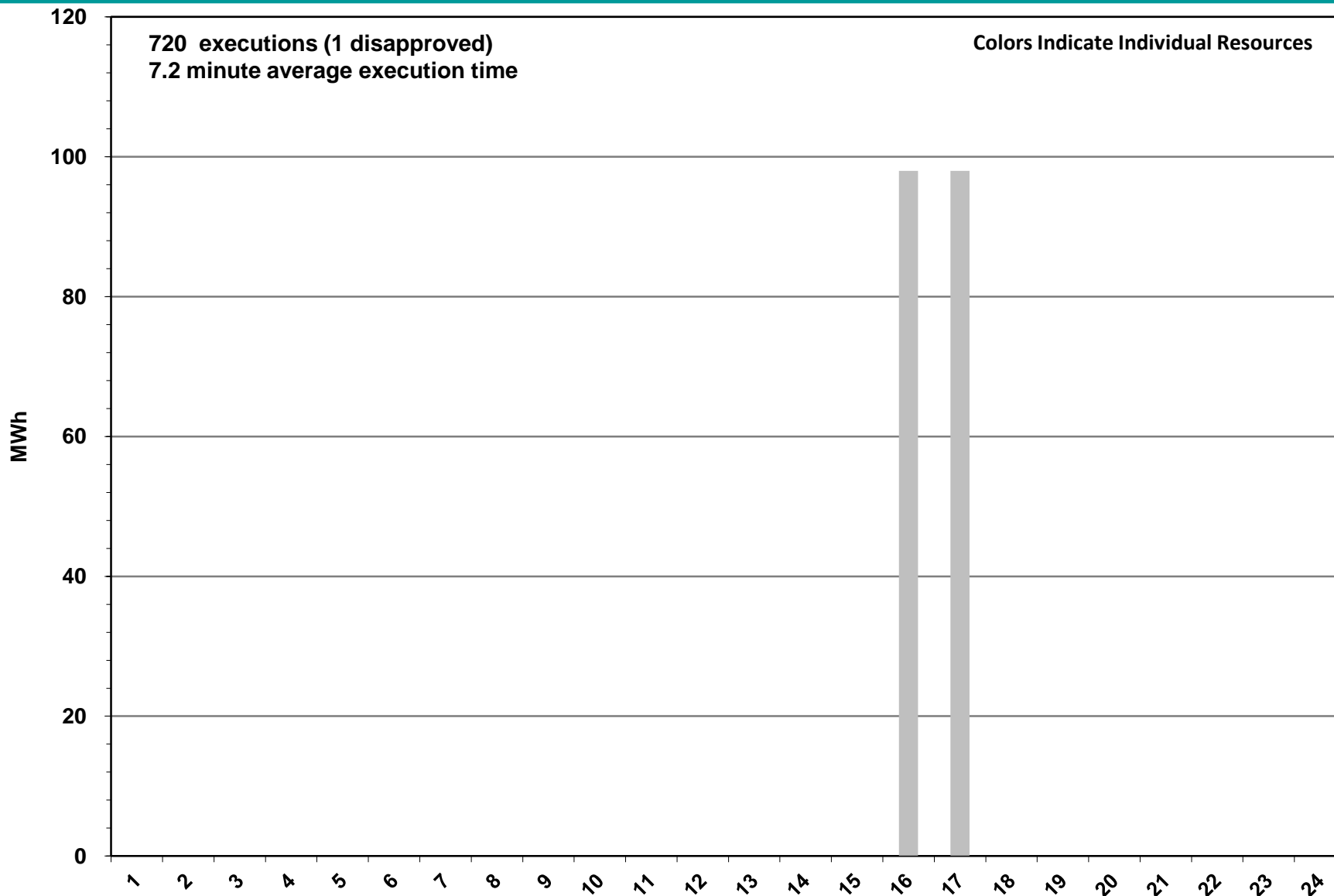
Day-Ahead Vs Real-Time Hub Average SPP (Hourly Average) - June 2012



DRUC Monthly Summary – June 2012



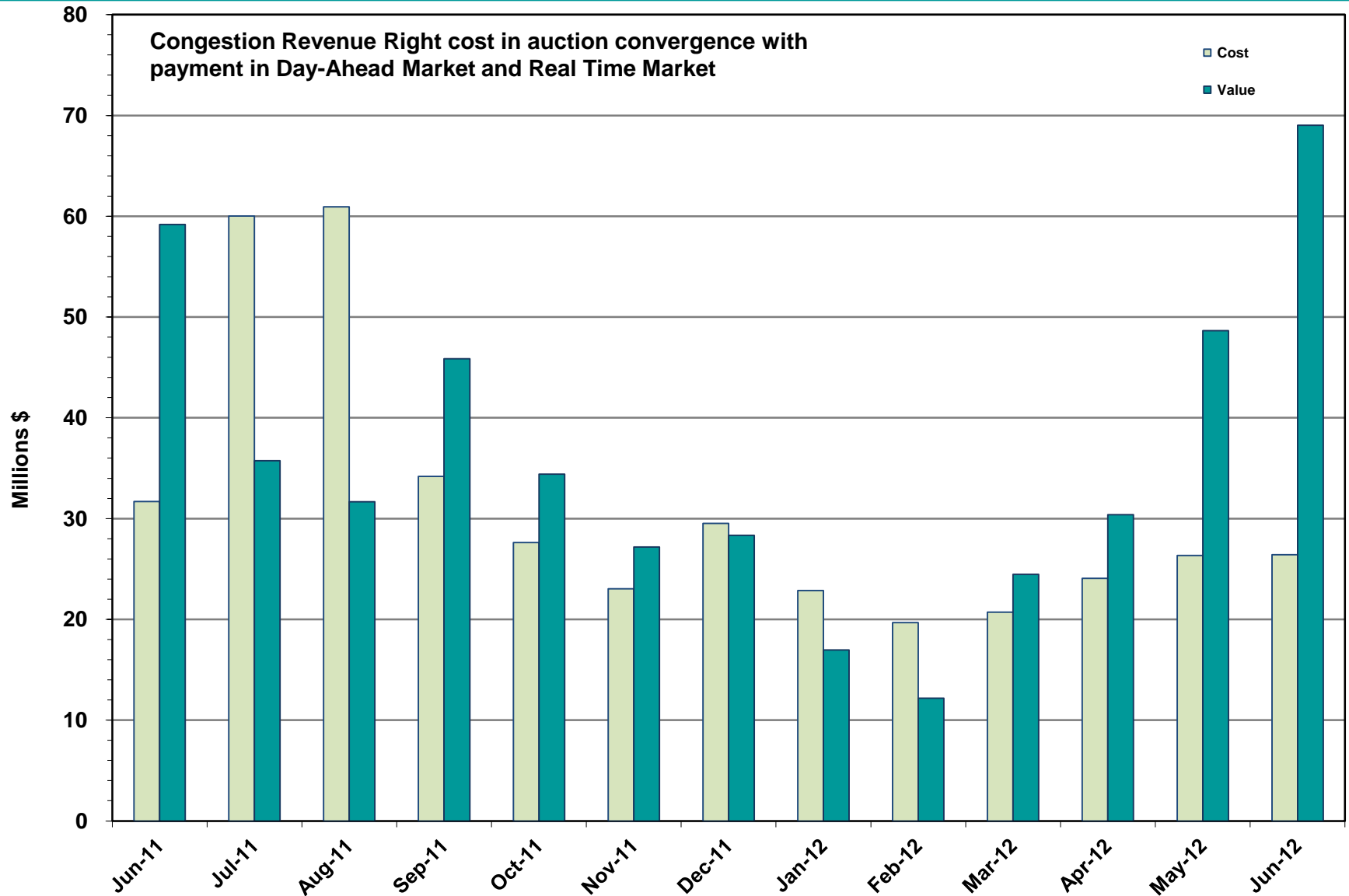
HRUC Monthly Summary – June 2012



Non-Spinning Reserve Service Deployment – June 2012

Deployment Start Time	Deployment End Time	Deployment Duration (Hours)	Max Deployment (MW)	Reason
NONE				

CRR Price Convergence – June 2012



Reliability Services – June 2012

Reliability Unit Commitment (RUC)

\$ in Millions

RUC Make-Whole Payments (\$0.01)

RUC Clawback Charges \$0.00

RUC Commitment Settlement (\$0.01)

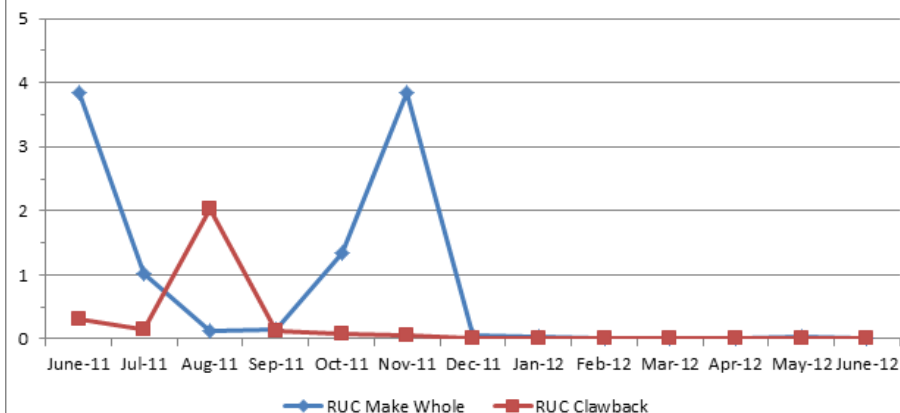
RUC Capacity Short Charges \$0.01

RUC Make-Whole Uplift \$0.00

RUC Commitment Cost Allocation \$0.01

RUC Decommitment Payments \$0.00

Reliability Unit Commitment (\$Mil)



RUC Cost continues to trend low.

June 2012 cost was \$0.01M, compared to:

- A charge of \$0.02M in May 2012
- A charge of \$3.53M in June 2011

Ancillary Services – June 2012

Capacity Services	\$ in Millions
Regulation Up Service	\$4.9
Regulation Down Service	\$1.1
Responsive Reserve Service	\$22.3
Non-Spinning Reserve Service	\$5.5
Black Start Service	\$0.6
Voltage Services - Reactive Power	\$0.0
Voltage Services - Lost Opportunity	\$0.0
Total Capacity Service	\$34.33

Capacity Services costs increased from last month, but are comparable to June 2011. Cost increases observed in the latter days of the month. June 24 - 28 accounted for approximately 66% of the month's cost; June 26th accounted for approximately 30% of the month's cost.

June 2012 cost was \$34.33M, compared to:

- A charge of \$20.09M in May 2012
- A charge of \$35.03M in June 2011

Energy Settlement – June 2012

Day-Ahead Market Energy Settlement

\$ in Millions

Energy Purchases	\$568.05
Point to Point Obligation Purchases	\$51.13
RMR Day-Ahead Revenue	\$0.00
Energy Sales	(\$550.86)
Day-Ahead Congestion Rent	\$68.32
Day-Ahead Market Make-Whole Payments	(\$0.23)

Day-Ahead Market settlement increased from last month. Real-Time energy settlement increased from previous month. Increases are attributable to higher demand and higher prices.

DAM & RTM energy settlement peaked on June 25 - 28.

Real-Time Market Energy Settlement

\$ in Millions

Energy Imbalance at a Resource Node	(\$623.35)
Energy Imbalance at a Load Zone	\$953.42
Energy Imbalance at a Hub	(\$246.04)
Real Time Congestion from Self Schedules	\$0.88
Block Load Transfers and DC Ties	(\$10.47)
Impact to Revenue Neutrality	\$74.45
Emergency Energy Payments	(\$0.16)
Base Point Deviation Charges	\$0.49
Real-Time Metered Generation (MWh in millions)	31.86

Congestion Revenue Rights (CRR) – June 2012

Auction Disbursements	\$ in Millions
Annual Auction	(\$16.15)
Monthly Auction	(\$10.26)
Total Auction Revenue	(\$26.41)
Day-Ahead CRR Settlement	(\$52.63)
Day-Ahead CRR Short-Charges	\$0.09
Day-Ahead CRR Short-Charges Refunded	(\$0.09)
Real-Time CRR Settlement	(\$15.71)
Real-Time CRR Short-Charges	\$0.01
Real-Time CRR Short-Charges Refunded	(\$0.01)
Total CRR Proceeds	(\$68.34)
Day-Ahead Point to Point Obligations Settlement	\$51.13
Real-Time Point to Point Obligation Settlement	(\$65.77)
Net Point to Point Obligation Settlement	(\$14.64)

Congestion Revenue Rights were fully funded.

High CRR settlement observed on June 10-12 and June 25 – 28.

Excess funds available for distribution to load. Distribution of balancing account funds to load for June 2012 was \$15.73M, compared to:

- \$6.38M in May 2012
- \$14.54M in June 2011

Revenue Neutrality – June 2012

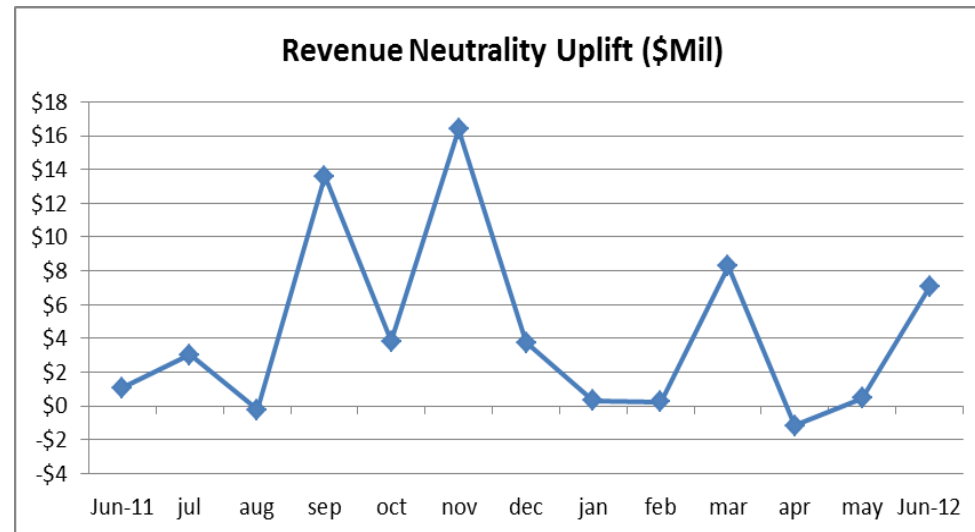
Revenue Neutrality Settlement

	\$ in Millions
Real-Time Point to Point Obligation Settlement	(\$65.77)
Real-Time Point to Point Options and Options with Refund Settlement	(\$15.71)
Real-Time Energy Imbalance Settlement	\$84.04
Real-Time Congestion from Self-Schedules Settlement	\$0.88
DC Tie & Block Load Transfer Settlement	(\$10.47)
Charge to Load	\$7.03

Revenue Neutrality charges to load increased in June 2012.

June 2012 was a charge of \$7.03M, compared to:

- \$0.44M charge in May 2012
- \$1.06M charge in June 2011



Net Uplift to Load – June 2012

Market-Based Uplifts

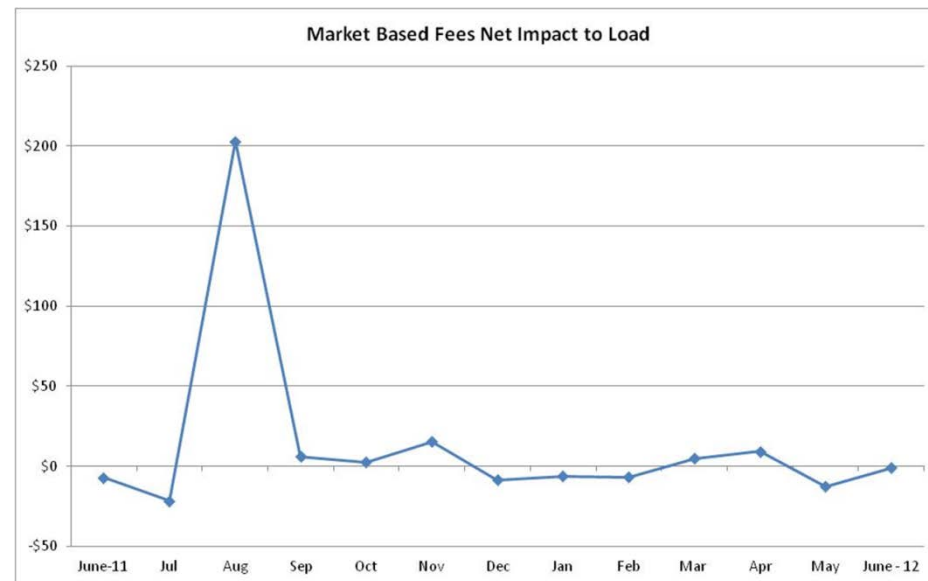
\$ in Millions

CRR Auction Revenue Disbursement Settlement	(\$26.41)
Balancing Account Proceeds Settlement	(\$15.73)
Net Reliability Unit Commitment Settlement	\$0.01
Ancillary Services Settlement	\$34.33
Reliability Must Run Services Settlement	\$0.0
Reliability Must Run for Capacity	\$0.0
Real-Time Revenue Neutrality Settlement	\$7.03
Emergency Energy Settlement	\$0.16
Base Point Deviation Settlement	(\$0.49)
Total	(\$1.10)
Fee Uplifts	
ERCOT Administrative Fee Settlement	\$13.43
Net Uplift Charge to Load	\$12.33

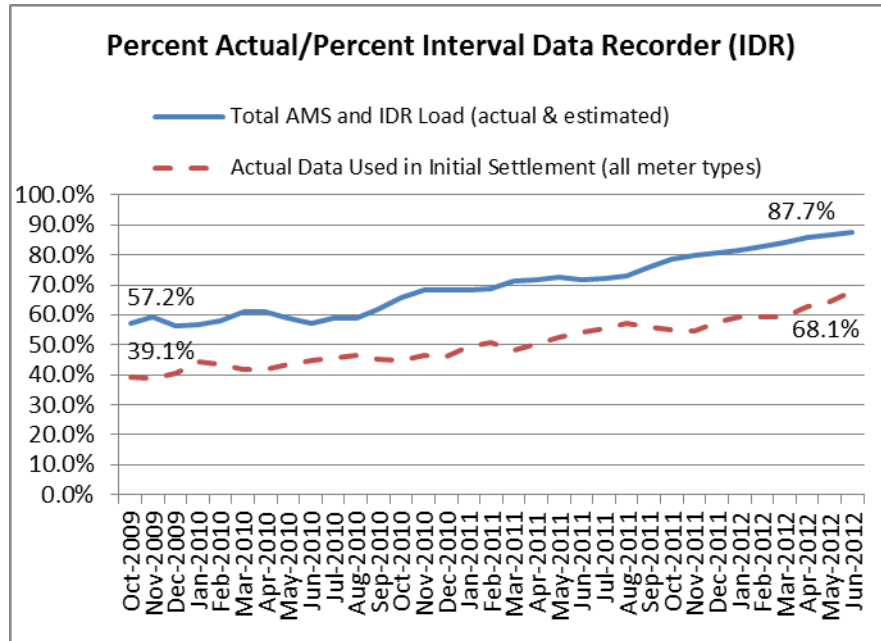
Net uplift to increases over last month, due to higher demand and prices.

June 2012 was a charge of \$12.33M, compared to:

- A credit of \$0.53M in May 2012
- A charge of \$6.93M in June 2011

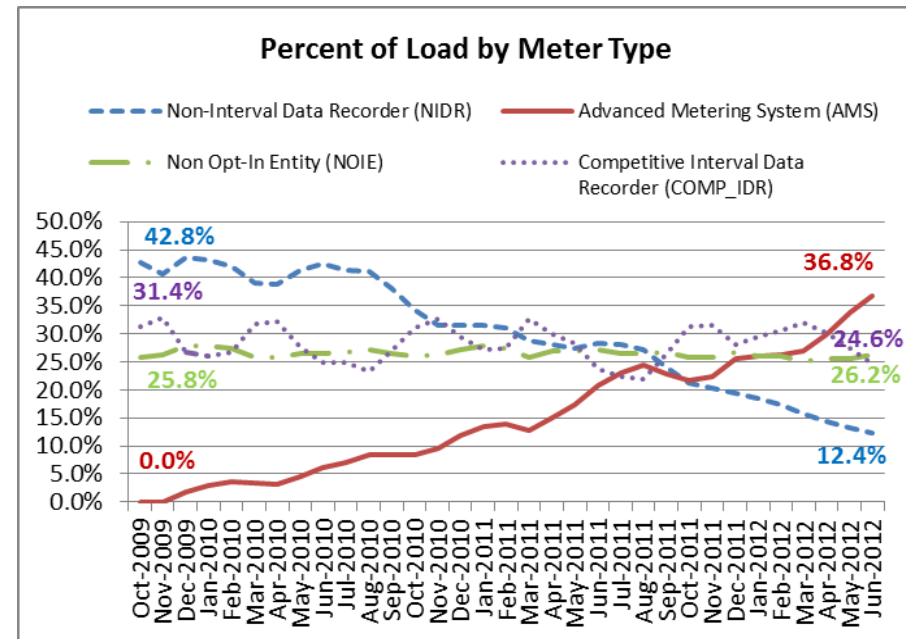


Advanced Meter Settlement Impacts – June 2012

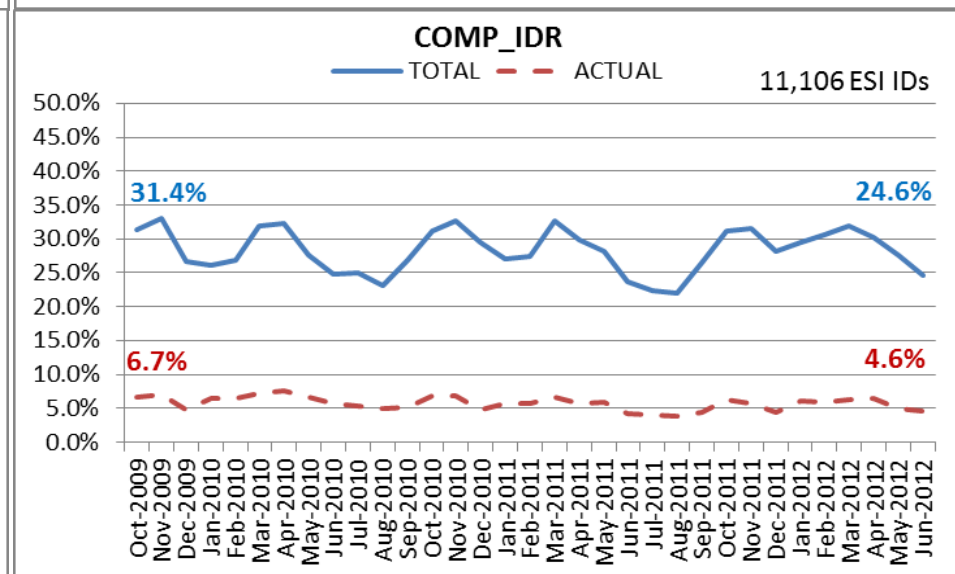
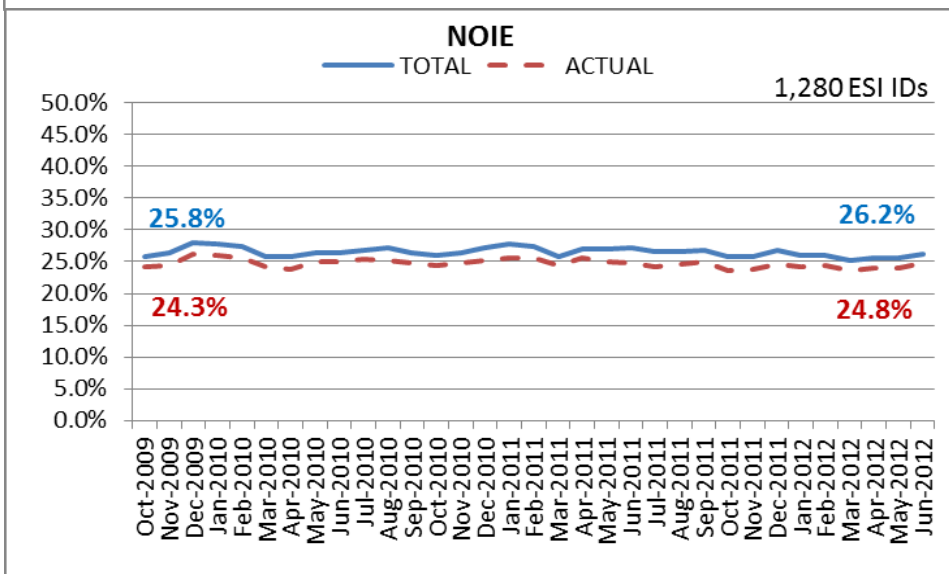
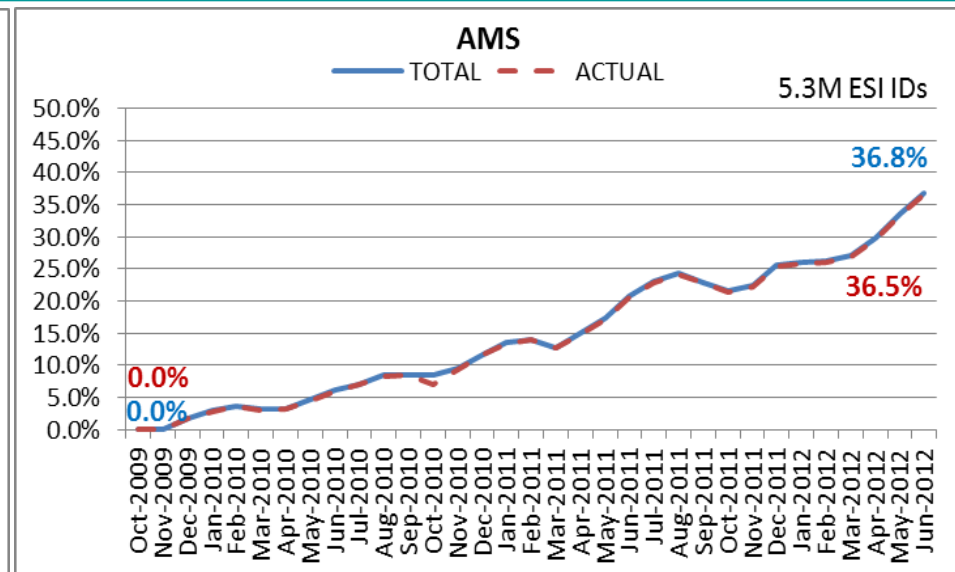
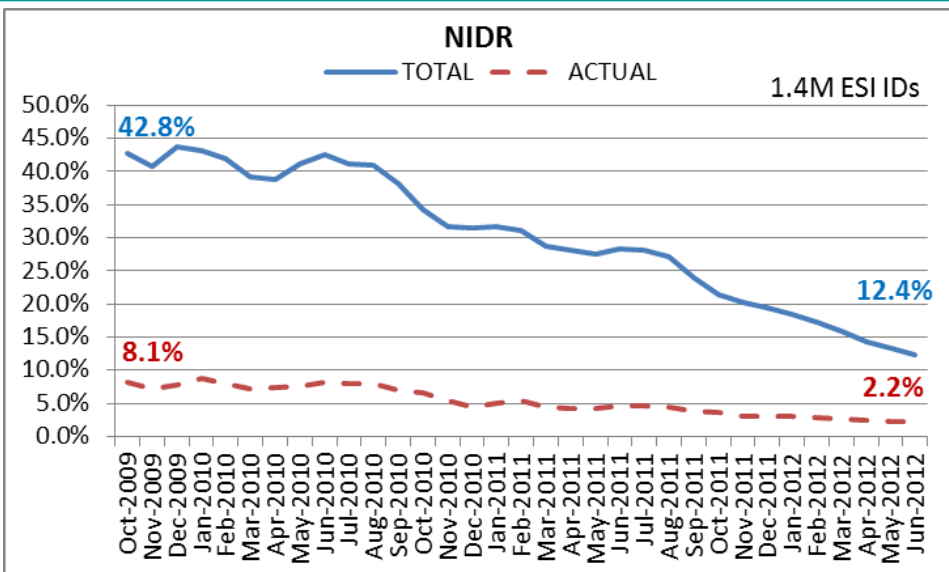


June 2012: At month end, settling 5.3M ESIIDs using Advanced Meter data.

June 2012: 87.7% of the load in ERCOT is settled with 15-min interval data (AMS, Competitive IDR, and NOIE IDR).



ERCOT Wide Load Volumes by Meter Type – INITIAL Settlement – June 2012

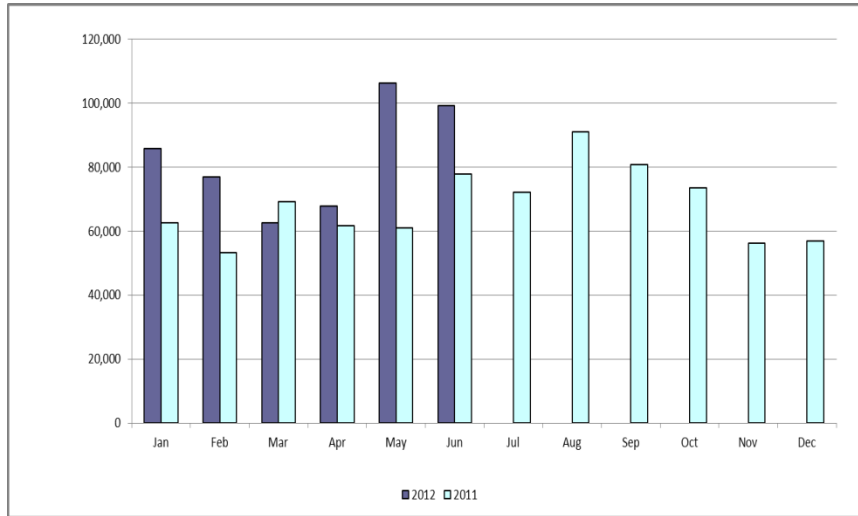


Retail Transaction Volumes – Summary – June 2012

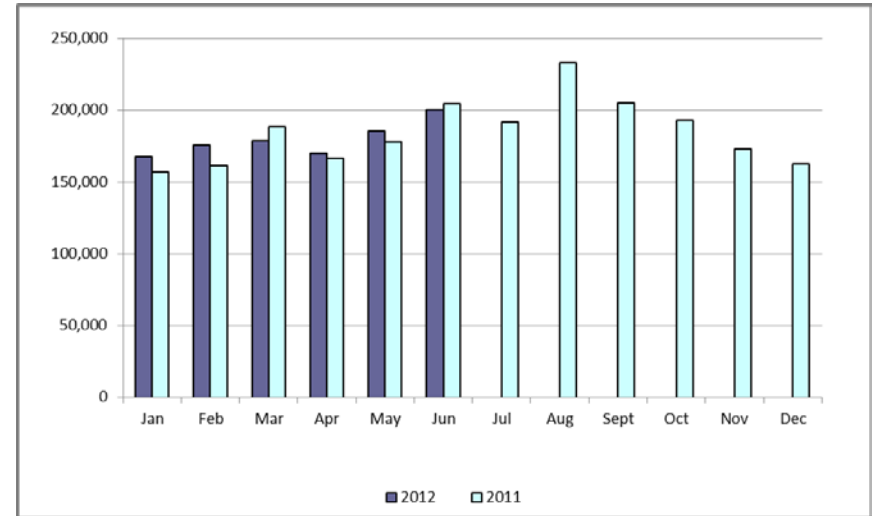
Transaction Type	Year-To-Date		Transactions Completed	
	June 2012	June 2011	June 2012	June 2011
Switches	498,330	385,533	99,226	77,780
Move - Ins	1,077,933	1,055,980	200,199	204,247
Move - Outs	527,751	543,333	102,067	107,084
Continuous Service Agreements (CSA)	250,030	167,106	34,526	35,194
Mass Transitions	1	22,056	1	0
Total	2,354,045	2,174,008	436,019	424,305
Total since June 1, 2001	47,278,889			

Retail Transactions Summary – June 2012

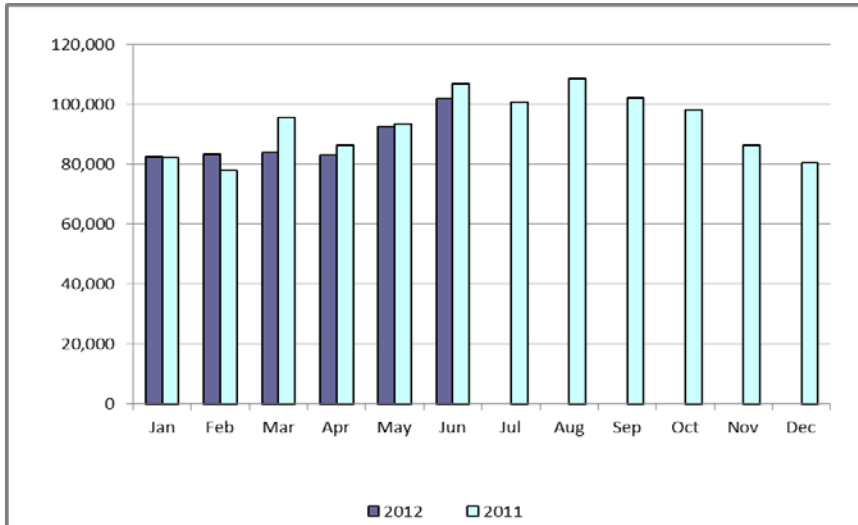
Switches



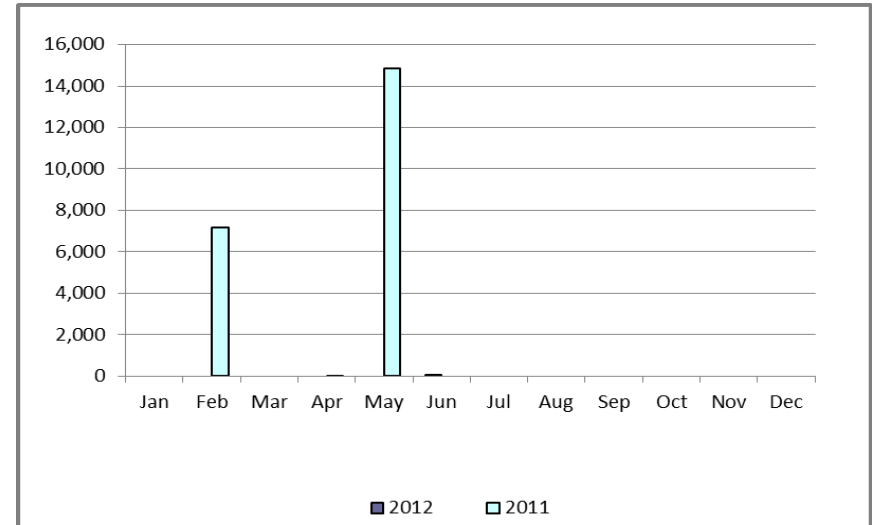
Move-Ins



Move-Outs

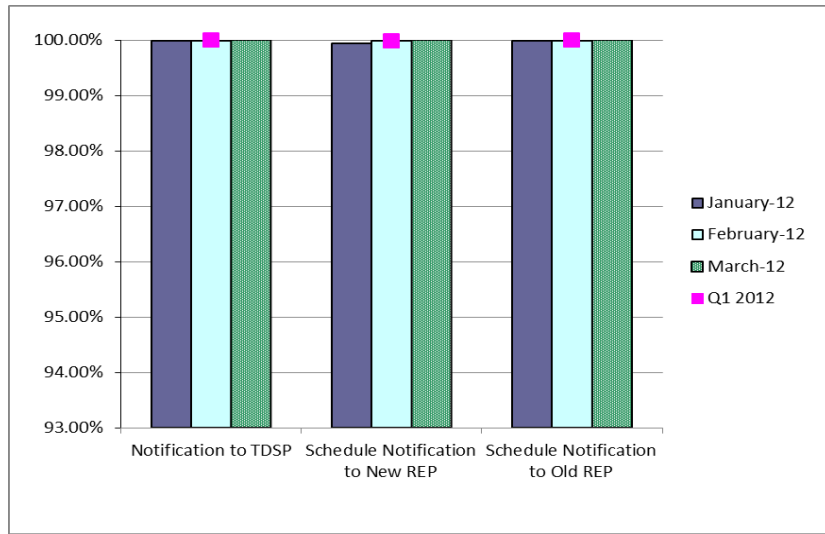


Mass Transition

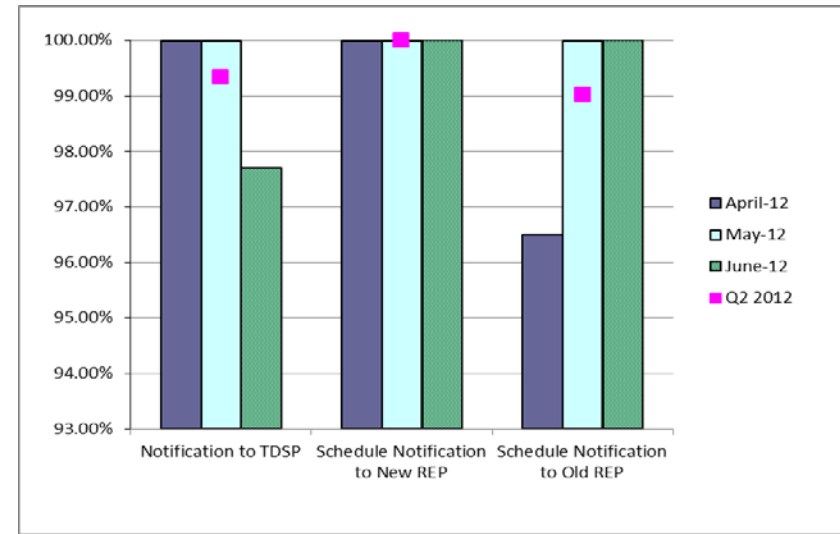


Retail Performance Measures – 2012 Switch – June 2012

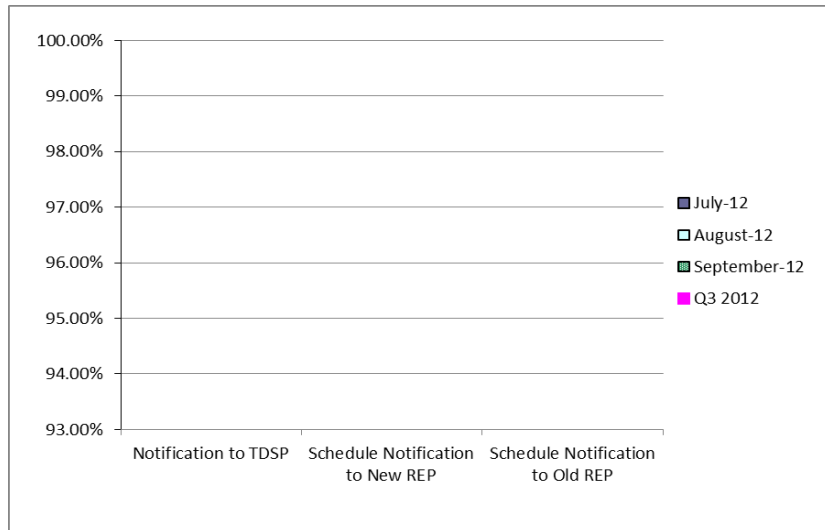
1st Quarter



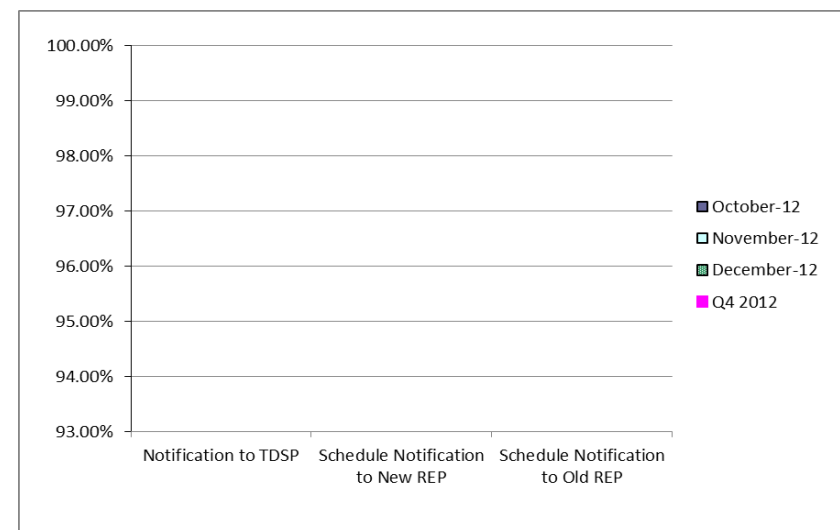
2nd Quarter



3rd Quarter

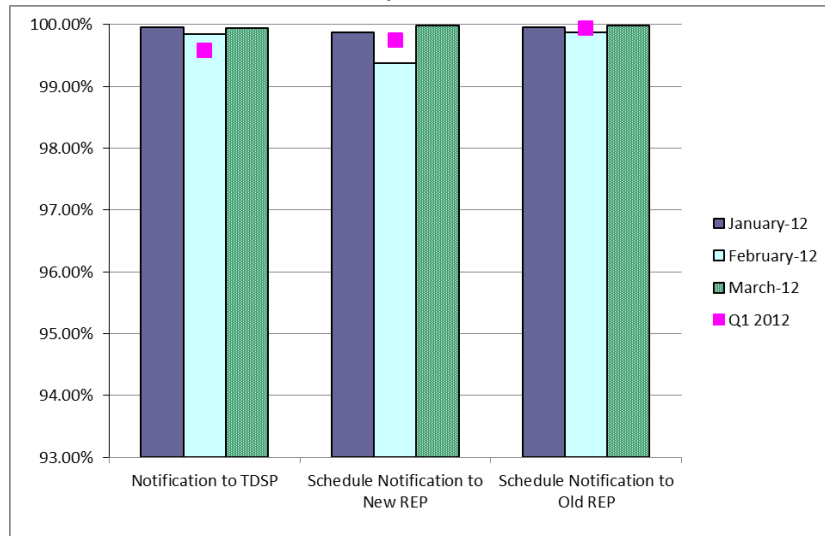


4th Quarter

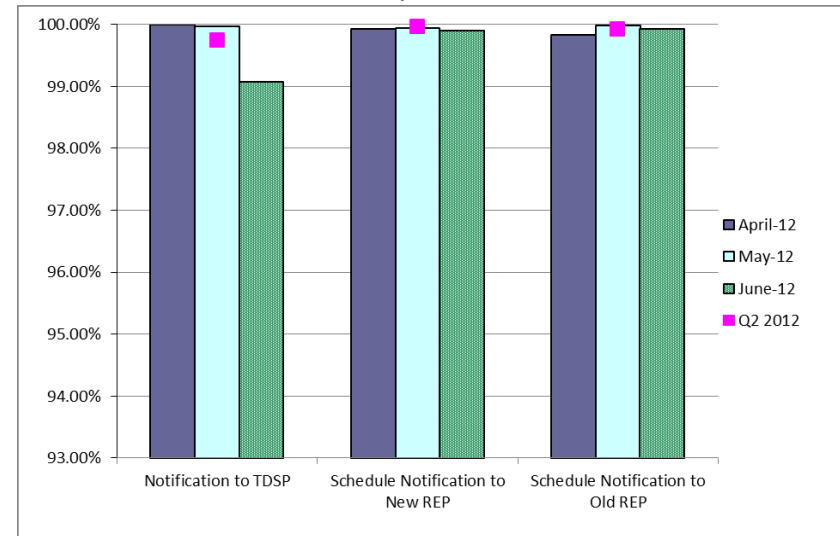


Retail Performance Measures – 2012 Move-In / Priority – June 2012

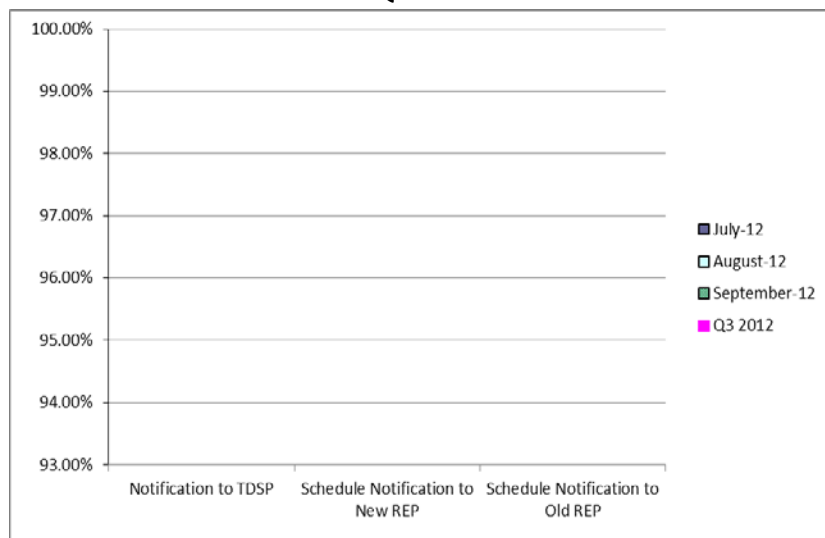
1st Quarter



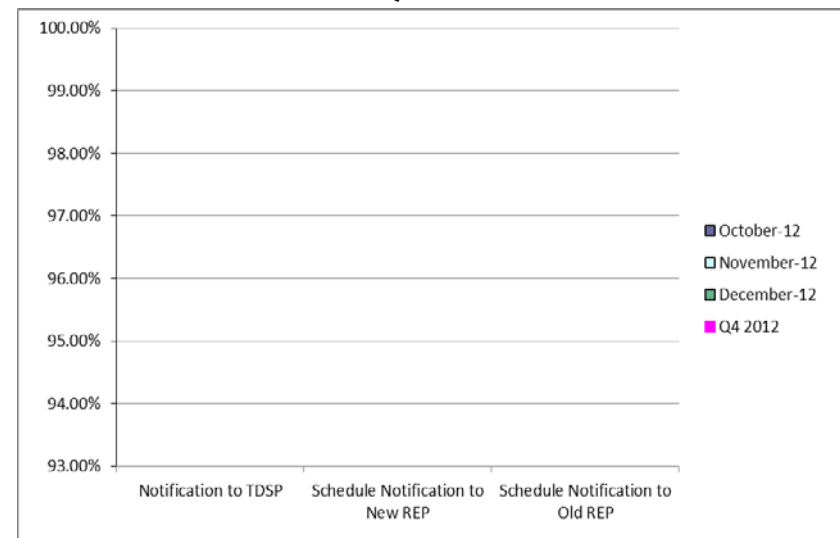
2nd Quarter



3rd Quarter

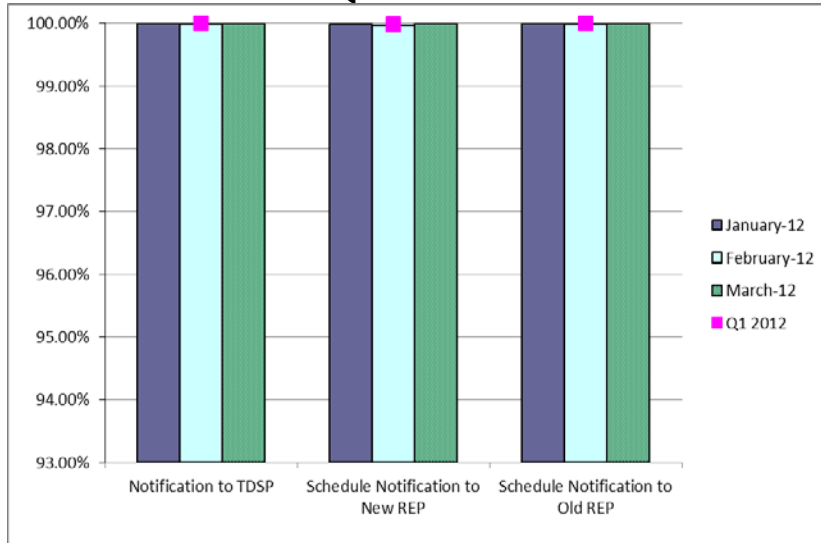


4th Quarter

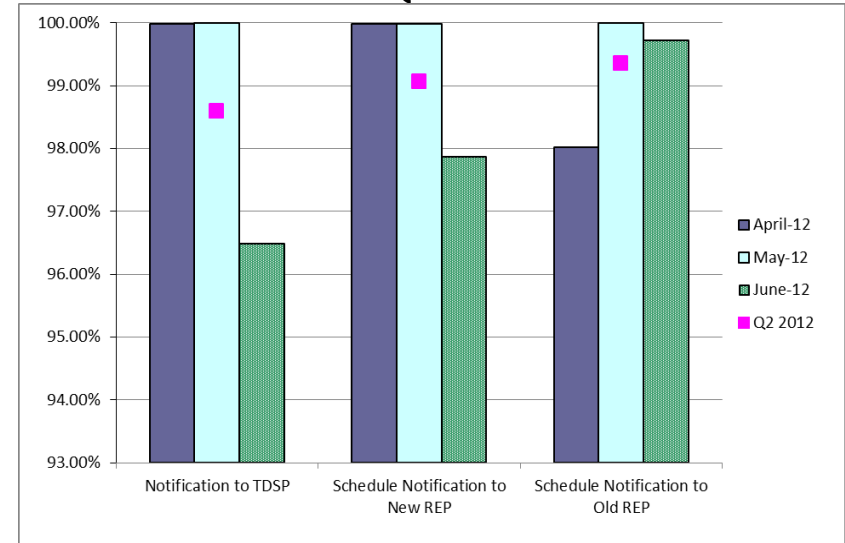


Retail Performance Measures – 2012 Move-In / Standard – June 2012

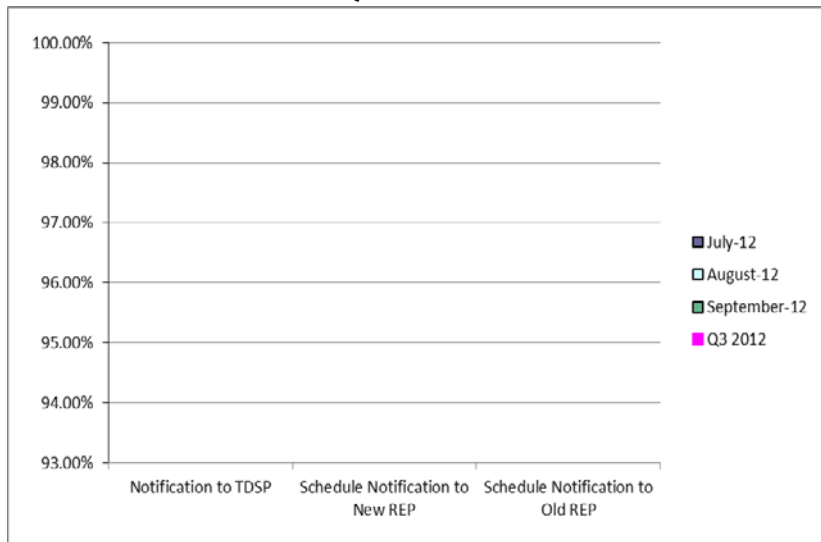
1st Quarter



2nd Quarter



3rd Quarter



4th Quarter





Projects Report

ERCOT Portfolio Stoplight Report (as of 7/12/2012)

Project Number	Project Name	Phase	Baseline Phase Start	Baseline Phase Finish	Scheduled Phase Finish	Schedule Status	Sum of 2012 Budgets	2012 Forecast Spend	2012 Variance	Sum of Total Budgets	Total Forecast Spend	Total Variance
PROJECTS IN FLIGHT (Count = 48) Sorted by Phase / Project Num							\$ 15,822,104	\$ 14,678,420	7%	\$ 29,302,642	\$ 28,523,457	2%
052-01	EMS Upgrade	Initiation							0%			0%
055-01	Siebel Upgrade 8.x	Initiation							0%			0%
NPRR313	Updating the Term Resource Plan to Current Operating Plan / Availability Plan	Initiation							0%			0%
NPRR377	Alternate Inputs to Base Point Deviation Charge	Initiation							0%			0%
SCR768	Automatic Non-Spin Redeployment and Deployment Based on Resource Availability	Initiation							0%			0%
017-01	Oracle 11g Upgrade	Planning	4/11/2012	9/19/2012	8/31/2012				0%			0%
038-01	Macomber Map NERC SA/Compliance Enhancements	Planning	3/29/2012	8/15/2012	8/27/2012	2	-8%		0%			3%
043-01	Met Center Lease Reconfiguration	Planning	6/27/2012	9/19/2012	9/19/2012		0%		0%			0%
046-01	MAI Conversion to IGRID	Planning	5/24/2012	8/1/2012	8/2/2012		-1%		4%			4%
047-01	CMS and MIR Replacement	Planning	5/31/2012	12/19/2012	12/12/2012		3%		0%			-1%
048-01	TSAT Wind Model	Planning	6/14/2012	8/29/2012	8/15/2012		18%		0%			0%
049-01	Contingency Functionality Enhmnts.	Planning	6/28/2012	7/25/2012	7/25/2012		0%		0%			0%
057-01	EPS Metering DB Redesign	Planning	7/3/2012	9/19/2012	9/19/2012		0%		0%			0%
NPRR322	Real-Time PTP Option Modeling	Planning	6/13/2012	7/24/2012	7/24/2012		0%		0%			0%
001_47	RARF Upgrade for Wind, Solar, and Storage Resources	Execution	9/7/2011	4/30/2012	6/29/2012	2	-25%		10%		2	-48%
006-01	SAGE (System Administrator Gateway Environment)	Execution	5/31/2012	12/5/2012	12/11/2012		-3%		-3%			1%
009-01	Compliance Software Tool	Execution	12/1/2011	11/30/2012	12/13/2012		-3%		1%			8%
010-01	MarkeTrak Enhancements for 4.0	Execution	10/26/2011	7/27/2012	7/5/2012		8%		5	-6%		1%
011-01	ERCOT Mobile	Execution	3/29/2012	8/8/2012	8/8/2012		0%		0%			0%
014-01	Implementation of NPRR347 and NPRR400	Execution	3/29/2012	11/23/2012	11/23/2012		0%		-2%			1%
016-01	ADP-IDM Interface	Execution	5/23/2012	11/7/2012	11/7/2012		0%		2%			1%
019-01	ERCOT Website Enhancements - 2012	Execution	3/8/2012	12/26/2012	12/17/2012		3%		3%			3%
020-01	CIM Upgrade for NMMS	Execution	6/14/2012	1/9/2013	12/19/2012		10%		23%			-2%
021-01	Incremental Update Capability - Phase 1	Execution	3/23/2012	1/2/2013	1/2/2013		0%		14%			15%
029-01	Capital Efficiencies and Enhancements	Execution	1/1/2012	12/31/2012	12/31/2012		0%		0%			0%
030-01	ITRON Load Forecast	Execution	6/27/2012	11/21/2012	11/21/2012		0%		0%			0%
037-01	SMTNET Improvements	Execution	6/20/2012	9/29/2012	8/29/2012		30%		0%			0%
040-01	Lawson Upgrade to 9.0.1	Execution	4/18/2012	8/22/2012	8/22/2012		0%		-2%			-2%
042-01	CRR Upgrade to v12.3	Execution	5/16/2012	2/18/2013	2/18/2013		0%		-2%			-2%
045-01	UC4 (AppVox) Automation Upgrade v8	Execution	6/27/2012	11/9/2012	11/9/2012		0%		0%			0%
10052_01	Settlement System Upgrade	Execution	1/25/2012	12/30/2014	12/30/2014		0%		13%			4%
11002_01	Texas SET 4.0	Execution	7/6/2011	7/13/2012	7/13/2012		0%		7	-17%		6%
2012 PC	Program Control Project	Execution	1/1/2012	12/31/2012	12/31/2012		0%		23%			23%
90006_02	Information Lifecycle Mgmt - Mkt Systems, Archive, Reporting	Execution	4/22/2011	12/4/2013	12/9/2013		0%		29%			9%
99912	Minor Cap - Critical - 2012	Execution	1/1/2012	12/31/2012	12/31/2012		0%		0%			0%
NPRR348	Generation Resource Start-Up and Shut-Down Process	Execution	3/29/2012	8/4/2012	7/30/2012		3%		15%			15%
NPRR351	SCED Look-Ahead Step 1: Pricing	Execution	1/25/2012	7/31/2012	7/30/2012		0%		39%			41%
NPRR354	Revisions to Non-Spin Performance Criteria Language and Provision for ICCP Telemetry of Non-Spin Deployment	Execution	3/29/2012	8/4/2012	8/4/2012		0%		12%			12%
NPRR357	Revisions to Collateral Requirements Concerning CRR Auctions	Execution	4/19/2012	10/17/2012	10/17/2012		0%		0%			0%
NPRR360	Summary Report of HDL and LDL	Execution	4/18/2012	7/11/2012	7/11/2012		0%		13%			13%
NPRR365	Change in Resource Outage Approvals from Eight to 45 Days	Execution	6/1/2012	11/21/2012	11/21/2012		0%		24%			12%
NPRR379	EILS Dispatch Sequence and Performance Criteria Upgrades	Execution	4/16/2012	6/26/2012	6/29/2012		-4%		15%			15%
NPRR382	Verbal RUC Committed or Decommitted Resources Report	Execution	5/30/2012	9/19/2012	9/10/2012		8%		0%			0%
NPRR393	Unconfirmed Trades Reports	Execution	6/20/2012	9/14/2012	9/14/2012		0%		0%			0%
NPRR422	Public DAM Shift Factors	Execution	7/3/2012	9/14/2012	9/14/2012		0%		0%			0%
NPRR437	Allow Aggregation of Multiple Generators Into A Single Resource For Mkt & Eng Modeling	Execution	3/29/2012	7/4/2012	7/4/2012		0%		0%			0%
NPRR442	Energy Offer Curve Requirement for Generation Resources Providing Reliability Must-Run Service	Execution	7/3/2012	9/14/2012	9/14/2012		0%		0%			0%
SCR760	Recommended Changes Needed for Information Model Mgr and Topology Processor for Planning Models	Execution	40780	41361	41334		4%		0%			4%

ERCOT Portfolio Stoplight Report (as of 7/12/2012)

Project Number	Project Name	Phase	Baseline Phase Start	Baseline Phase Finish	Scheduled Phase Finish	Schedule Status	Sum of 2012 Budgets	2012 Forecast Spend	2012 Variance	Sum of Total Budgets	Total Forecast Spend	Total Variance
PROJECTS NOT YET STARTED (Count = 22)		Sorted by R	Forecast Start Date				\$ 2,316,964	\$ 946,464		\$ 3,893,920	\$ 3,393,920	
NPRR207	Unit Deselection	Not Started	Q3						0%			0%
NPRR260	Providing Access to MIS Secure Area to MIS Registered Users	Not Started	Q3						0%			0%
NPRR272	Definition and Participation of Quick Start Generation Resources	Not Started	Q3						0%			0%
NPRR327	State Estimator Data Redaction Methodology	Not Started	Q3						0%			0%
NPRR397	Balance of the Day Ancillary Service Market	Not Started	Q3						0%			0%
NPRR419	Revise Real Time Energy Imbalance and RMR Adjustment Charge	Not Started	Q3						0%			0%
SCR756	MarkeTrak Upgrade and Enhancements (Phase 2)	Not Started	Q3						0%			0%
TBD	NMMS Upgrade	Not Started	Q3						0%			0%
TBD	Planning Site Transition to MIS	Not Started	Q3						0%			0%
NOGRR084	Daily Grid Operations Summary Report	Not Started	Q4						0%			0%
NPRR407	Credit Monitoring Posting Requirements	Not Started	Q4						0%			0%
NPRR439	Updating a Counter-Party's Available Credit Limit for Current Day DAM	Not Started	Q4						0%			0%
NPRR463	CRR Auction Structure Enhancements	Not Started	Q4						0%			0%
SCR771	ERCOT System Change Allowing Independent Master QSE to Represent Split Generation Resources	Not Started	Q4						0%			0%
TBD	Endpoint Security Phase 2	Not Started	Q4						0%			0%
TBD	MP Online Data Entry - Ph 1	Not Started	Q4						0%			0%
NPRR222	Half Hour Start Unit RUC Clawback	Not Started	TBD						0%			0%
PRR830 NPRR269	Reactive Power Capability Requirement	Not Started	TBD						0%			0%
TBD	Data Center Growth & Asset Replacement - 2012	Not Started	TBD						0%			0%
TBD	MP Communications Tool	Not Started	TBD						0%			0%
TBD	OA Grid Health Operator View	Not Started	TBD						0%			0%
TBD	Vulnerability Management	Not Started	TBD						0%			0%

ERCOT Portfolio Stoplight Report (as of 7/12/2012)

Project Number	Project Name	Phase	Baseline Phase Start	Baseline Phase Finish	Scheduled Phase Finish	Schedule Status	Sum of 2012 Budgets	2012 Forecast Spend	2012 Variance	Sum of Total Budgets	Total Forecast Spend	Total Variance
PROJECTS COMPLETED IN 2012 (Count = 17) Sorted by Project Number			Dates below are final Execution phase dates				\$ 1,339,121	\$ 2,032,913	-51%	\$ 47,322,959	\$ 46,273,514	2%
004_01	Secure Remote Access Management (SRAM)	Complete	12/5/2011	3/7/2012	3/7/2012	0%			-109%			8%
005_01	Endpoint Security Phase 1	Closing	12/15/2011	4/25/2012	5/8/2012	-9%			-3%			12%
007_01	Taylor Facility Remodel	Complete	9/14/2011	1/15/2012	1/25/2012	-8%			-999%			6%
013_01	MMS 2012 Release 1: NPRR321/NPRR326/NPRR355	Complete	12/14/2011	2/23/2012	2/23/2012	0%			4%			5%
015_01	Outage Capacity Calculation Tool	Complete	1/4/2012	4/30/2012	4/30/2012	0%			-1%			0%
023_01	Quality Training Database	Closing	2/22/2012	5/30/2012	5/31/2012	-1%			25%			25%
025_43	EDW Platform Transition	Closing	2/15/2012	4/30/2012	4/30/2012	0%			22%			7%
025_52	HP Openview Upgrade	Complete	11/1/2011	12/29/2011	4/1/2012	-162%			-9%			0%
026_01	Support for New Resource Types in ERCOT Systems	Canceled	1/4/2012	8/1/2012	6/11/2012	24%			27%			27%
11000_01	Data Center Buildout	Closing	1/3/2011	1/31/2012	1/30/2012	0%			-114%			1%
NPRR314	Requirement to Post Generation Resources Temporal Constraints	Closing	3/5/2012	4/29/2012	4/27/2012	3%			27%			27%
NPRR359	Monthly TDSP Load Report	Complete	3/1/2012	5/2/2012	5/4/2012	-3%			5%			5%
NPRR361	Real-Time Wind Power Production Data Transparency	Complete	1/11/2012	5/3/2012	5/2/2012	0%			-122%			-122%
NPRR395	CRR Auction Offer Award Disclosure	Complete	2/29/2012	4/25/2012	4/27/2012	-3%			6%			6%
NPRR434	Increase the Capacity Limitation of a Generation Resource Providing RRS	Complete	3/7/2012	6/1/2012	5/2/2012	34%			64%			64%
SCR761	Provide Price Republication Notifications via API and Provide Price Corrections via XML	Complete	10/5/2011	3/2/2012	2/28/2012	2%			-362%			-26%
SCR764	Public Access to Select MIS Dashboards	Complete	7/24/2011	12/9/2011	2/28/2012	-58%			-7%			-1%

SUMMARY

[illegible]

2012 Project Funding	\$15,000,000				
"Not Started" Project Demand	\$ 946,464			\$ 3,393,920	

Footnotes	1	Change in design approach resulted in more funding and/or time required for delivery
	2	Current phase took longer than expected, resulting in additional funding and/or time required
	3	Vendor unable to complete work planned for 2011
	4	Added scope resulted in more funding and/or time required for delivery
	5	Labor hours planned for 2011 occurred in 2012
	6	Purchased items planned for 2011 arrived in 2012
	7	Contract labor replaced FTE labor (2 instances)
	8	Current phase requiring more labor than expected, resulting in additional funding and/or time required
	9	Invalid assumption for 2011 accounting related to treatment of prepaids and hardware installation