



ONCOR CREZ Status & Accomplishments

June 15, 2012

**ERCOT Regional Planning Group
Austin, Texas**

Kenneth A. Donohoo
Director, System Planning
ONCOR Electric Delivery Co LLC

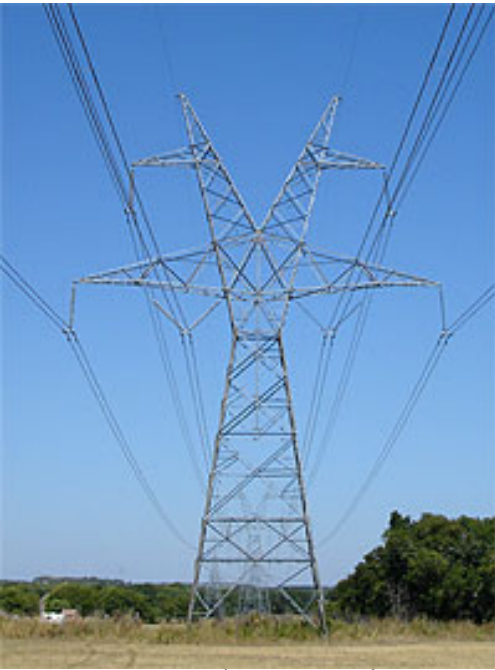
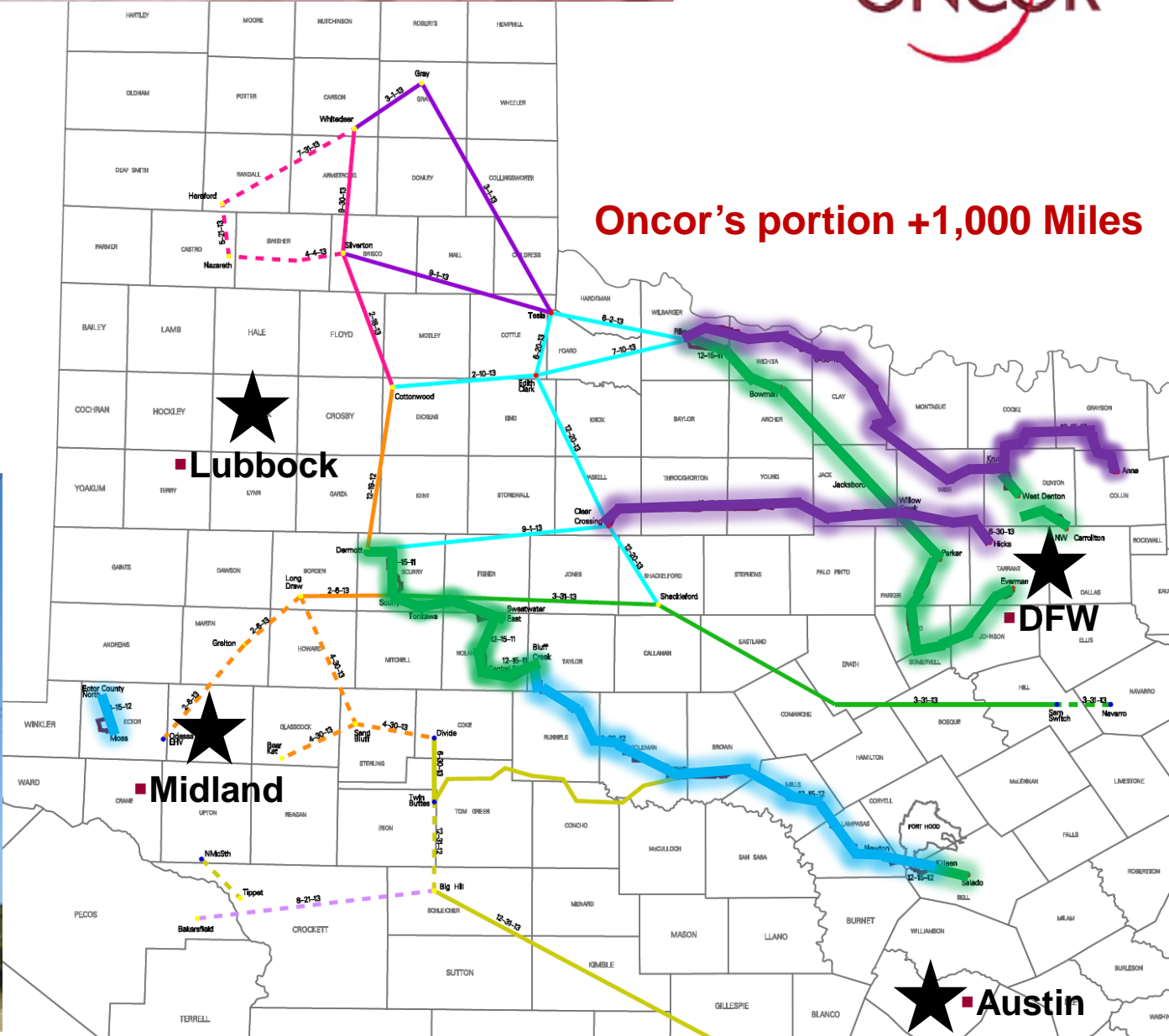


Schedule

Year-end 2011 —

Year-end 2012 —

Year-end 2013 —



Approval of 15 CREZ Line CCN's

Completed all of our ROW acquisition on CREZ priority projects

By 6/30/2012 we will have completed:

- 28 linear miles 138 kV (28 circuit miles)

- 503 linear miles of 345 kV (797 circuit miles)

- 6 new major 345 kV switching stations/collection stations

- Reconfigured 11 existing 345 kV switching stations

Awarded contracts for Brown and Parker SVC's + 300/-265 Mvar

- MEPPI for Brown (2 SVC's)

- ABB for Parker (1 SVC)

Awarded contract for Clear Crossing Willow Creek Series Capacitor

- 50% Compensation

- ABB

- Rocky Mound station

- Two Circuits

Environmental Assessments Performed on CREZ Projects to Date:

Reviewed 21 CREZ Line Segments – 16 Switch Stations

850 linear miles of right of way surveyed to determine potential environmental impact

30 Storm Water Permits Obtained from TCEQ and Storm Water Pollution Prevention Plans prepared including installation of over 15,000 feet of sediment barriers installed to protect Texas waters

247 Cultural Resource Sites Reviewed and Avoided (11 Sites of Historic Significance Documented During Surveys)

29 US Army Corp of Engineer Permits Authorizing work within waterways under Corp jurisdiction

210 miles of avian flight diverters installed in specific locations designed to protect migratory species such as the Endangered Whooping Crane

Obtained the States largest Incidental Take Permit from the USFWS allowing for the conservation of T&E Species while ensuring continued timely construction of CREZ projects



CREZ Major Accomplishments



Implementation of 5,000 A Capable 345 kV Circuits

2984 MW capability

Powers 200,000 homes

Develop Super Ampacity Switchyard

7000 Amp Main Bus

Land Requirements

Limit Need to Rebuild

Provide for reasonable maintenance

Provide appropriate level of reliability

Aesthetics

Build-able

Reasonable initial and ultimate cost

Accommodate different owners

ONCOR





03/17/2010





The logo for ONCOR, featuring the word "ONCOR" in a bold, red, sans-serif font. The letters are partially enclosed by two curved red lines that form a partial circle around the text.



05/22/2012 14:57





Questions