



# Business Integration Update

Board of Directors Meeting  
February 21, 2012

- **Project Management Update:**

- New Project Dashboard to highlight status of projects (budget/schedule)
  - In general, good performance overall on project schedules and total budgets
  - Some projects have 2012 calendar year metrics red due to timing of carry-forward forecasts; however most of these projects have overall metrics that are green
- Data Center relocation:
  - Final in-scope cleanup and equipment complete
  - Small remaining activities transition to O&M
- Other Projects:
  - Release 1 (R1) February 22-26 currently in testing
    - System Change Requests (SCR)761, SCR764
    - Nodal Protocol Revision Requests (NPRR)326 and NPRR355
  - Taylor Facility Remodel completed

- **Market Rules Update:**

- 11 new Revision Requests were filed in January
  - 6 NPRRs
  - 2 SCRs
  - 3 Market Guide revisions



# ERCOT Portfolio Stoplight Report (as of 2/13/2012)

Project Number	Project Name	Phase	Baseline Phase Start	Baseline Phase Finish	Scheduled Phase Finish	Schedule Status	2012 Budget	2012 Forecast Spend	2012 Variance	Total Budget	Total Forecast Spend	Total Variance
<b>PROJECTS NOT YET STARTED (Count = 34)</b>							<b>\$ 8.90M</b>	<b>\$ 7.25M</b>		<b>\$ 8.90M</b>	<b>\$ 8.90M</b>	
NPRR207	Unit Deselection	Not Started							0%			0%
NPRR222	Half Hour Start Unit RUC Clawback	Not Started							0%			0%
NPRR260	Providing Access to MIS Secure Area to MIS Registered Users	Not Started							0%			0%
NPRR272	Definition and Participation of Quick Start Generation Resources	Not Started							0%			0%
NPRR313	Updating the Term Resource Plan to Current Operating Plan / Availability Plan	Not Started							0%			0%
NPRR314	Requirement to Post Generation Resources Temporal Constraints	Not Started							0%			0%
NPRR322	Real-Time PTP Option Modeling	Not Started							0%			0%
NPRR360	Summary Report of HDL and LDL	Not Started							0%			0%
NPRR377	Alternate Inputs to Base Point Deviation Charge	Not Started							0%			0%
NPRR379	EILS Dispatch Sequence & Performance Criteria Upgrades	Not Started							0%			0%
NPRR382	Verbal RUC Committed or Decommitted Resources Rpt	Not Started							0%			0%
NPRR383	Unconfirmed Trades Reports	Not Started							0%			0%
PRR830 NPRR269	Reactive Power Capability Requirement	Not Started							0%			0%
SCR756	MarkeTrak Upgrade and Enhancements (Phase 2)	Not Started							0%			0%
TBD	CMS and MIR Replacement	Not Started							0%			0%
TBD	Contingency Functionality Enhmnts.	Not Started							0%			0%
TBD	CTFC Compliance	Not Started							0%			0%
TBD	Data Center Growth & Asset Replacement - 2012	Not Started							0%			0%
TBD	EMS Upgrade	Not Started							0%			0%
TBD	Endpoint Security Phase 2	Not Started							0%			0%
TBD	Facilities Project	Not Started							94%			0%
TBD	IGRID Implementation	Not Started							0%			0%
TBD	Macomber Map NERC SA/Compliance Enhancements	Not Started							0%			0%
TBD	Malware Analysis Infrastructure	Not Started							0%			0%
TBD	MP Communications Tool	Not Started							0%			0%
TBD	MP Online Data Entry - Ph 1	Not Started							0%			0%
TBD	NMMS Upgrade	Not Started							0%			0%
TBD	OA Grid Health Operator View	Not Started							0%			0%
TBD	Planning Site Transition to MIS	Not Started							0%			0%
TBD	Siebel Upgrade 8.x	Not Started							0%			0%
TBD	SMTNET Improvements	Not Started							0%			0%
TBD	TSAT Wind Model	Not Started							0%			0%
TBD	UC4 (AppWorx) Automation Upgrade v8	Not Started							0%			0%
TBD	Vulnerability Management	Not Started							0%			0%
<b>PROJECTS COMPLETED IN 2012 (Count = 0)</b>							<b>\$ -</b>	<b>\$ -</b>		<b>\$ -</b>	<b>\$ -</b>	
None												



# 2012 Release Targets – Board-Approved NPRRs/SCRs

Source	Release 1 2/2012	Release 2 4/2012	Release 3 6/2012	Release 4 8/2012	Release 5 10/2012	Release 6 12/2012	TBD
<b>Market / PUCT</b>	SCR760 <sup>(b)</sup> SCR761 SCR764 <sup>(e)</sup>	NPRR313 NPRR314 NPRR359 NPRR361 NPRR395	<b>NPRR294</b> NPRR351 <u>NPRR357</u> NPRR382 NPRR383 NPRR403 <b>SCR756<sup>(a)</sup></b> <b>SCR760<sup>(c)</sup></b>	NPRR322 NPRR354	<b>NPRR207</b> <b>NPRR222</b> <b>NPRR272</b> NPRR360		SCR756 <sup>(b)</sup>
<b>ERCOT</b>	<b>NPRR326</b> NPRR355			NPRR348 NPRR365	NPRR379		NPRR347 NPRR377 NPRR400
<b>Counts</b>	5	5	8	4	6	0	4

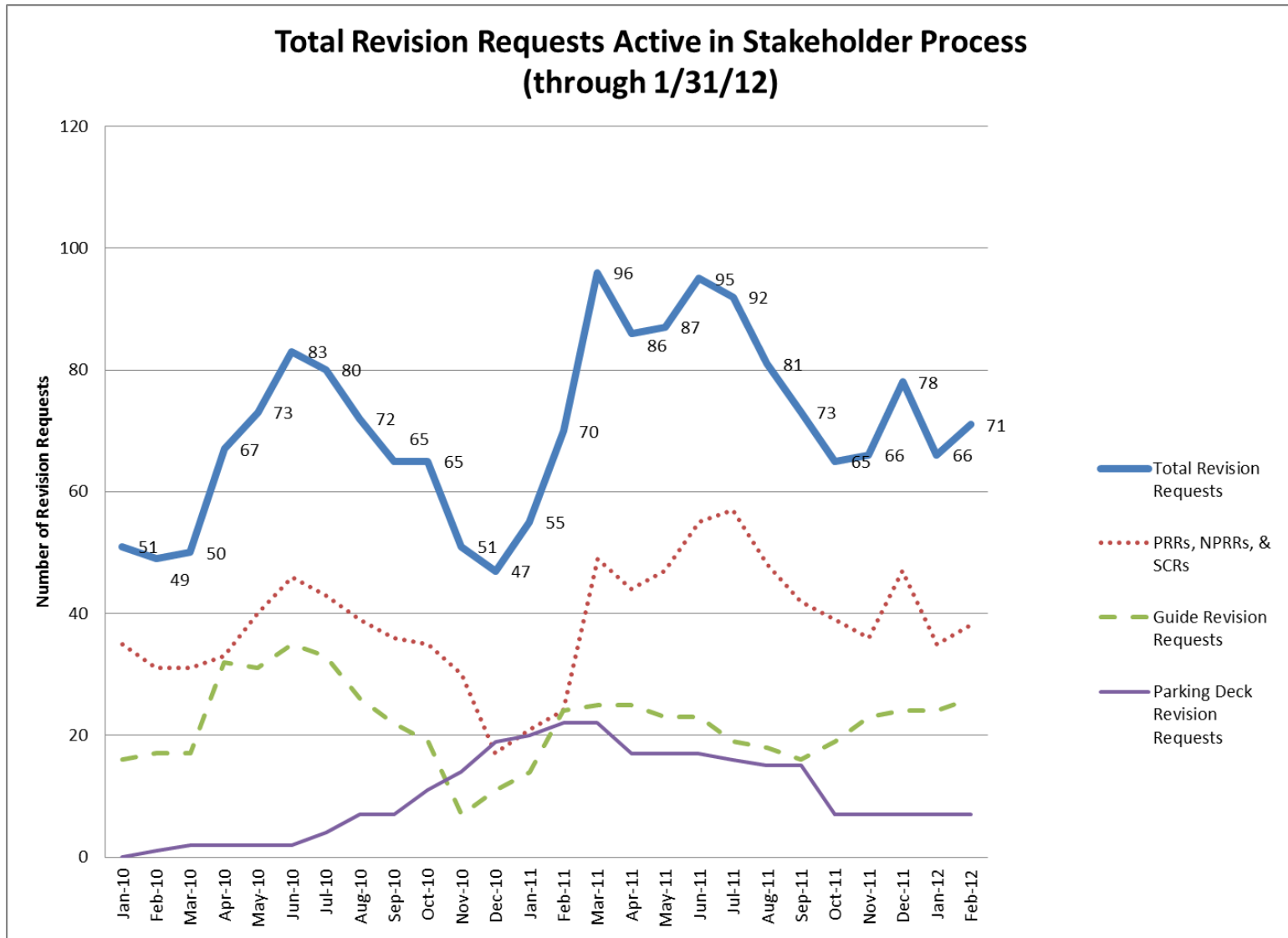
Note 1: Bold indicates inclusion in the original Board-approved 2012 PPL

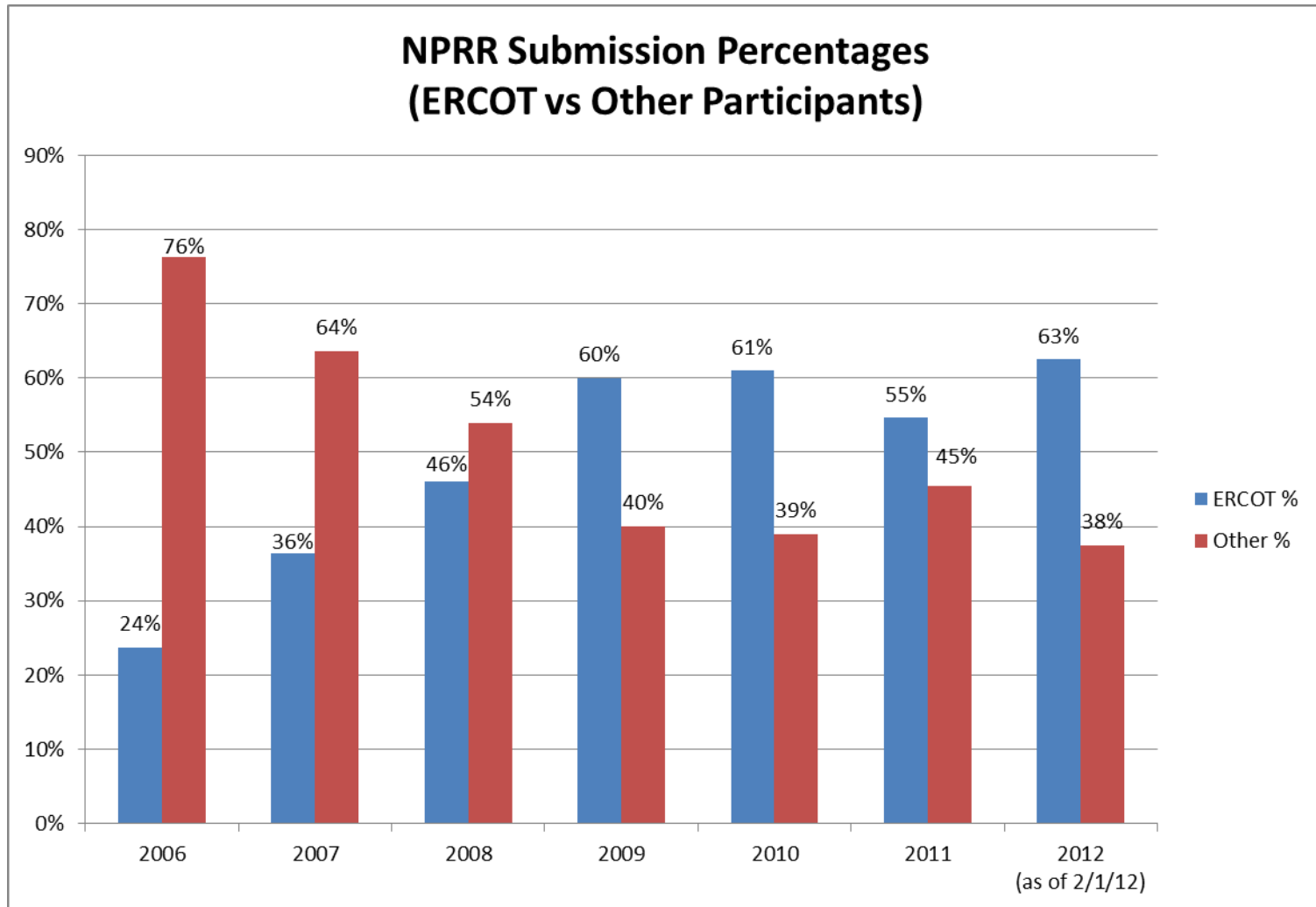
Note 2: Underline indicates new/revised release targets

Note 3: (a), (b), etc. indicates multiple release phases

Note 4: Release targets are subject to change

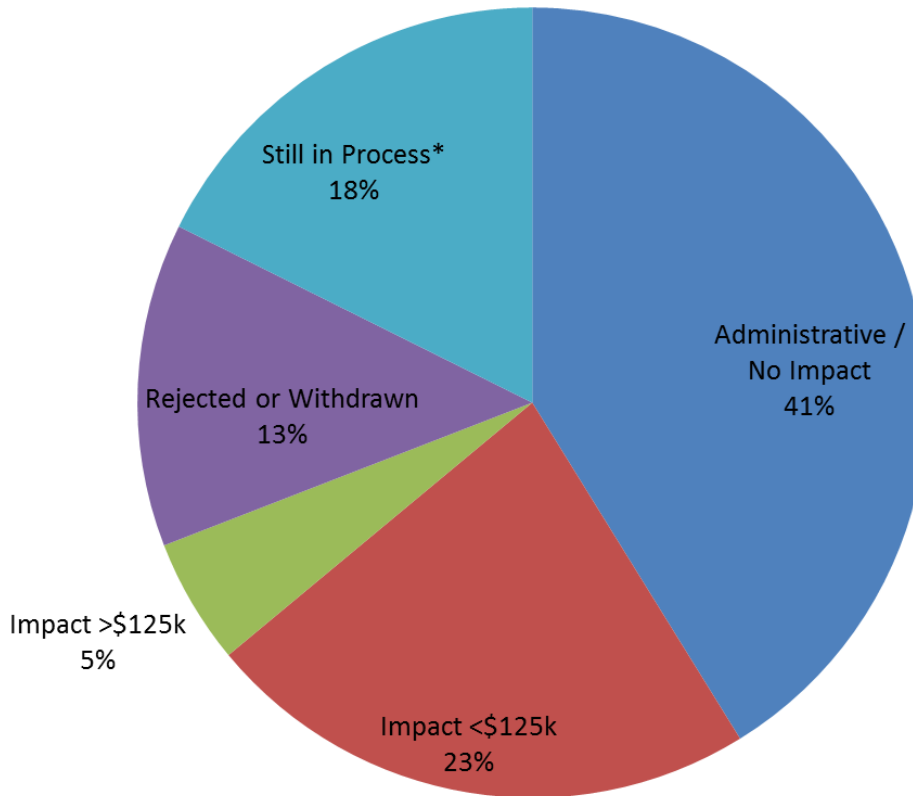
# Market Rules Update





\* The 2006-2007 stats are deceiving as ERCOT staff was often taking NPRRs to the Transition Plan Task Force to get their endorsement and then TPTF would submit the NPRR. This helped to speed the process as PRS was sending all NPRRs through TPTF prior to considering the language.

## NPRR Impact Assessment Overview for NPRRs submitted 1/1/11 - 1/31/12 (136 Total New NPRRs)



\*Once an NPRR is recommended for Board approval, it is moved from 'Still in Process' to a defined impact category.



# ERCOT Staffing Impacts due to Market Rule Changes

## Summary of FTE Impact of Revision Requests By Department

### --- Board Approved ---

Incremental Labor Impact of Change      Net ERCOT Staffing Impact

Revision Request	Division	Department Name	Labor Effort (in FTEs*)	Additional FTEs Required	Budget Impact	Status / Comments
SCR760	Operations	Network Modeling	2.20	0	\$0	Absorbed in 2012 budget and staffing plan
NPRR286	Corporate	Credit	0.50	0	\$0	Absorbed in 2012 budget and staffing plan
NPRR365	Operations	Outage Coordination	2.00	2	\$240k-\$260k	Board approved - 9/20/2011
NOGRR054	Compliance	Compliance	1.00	0	\$0	Absorbed in 2012 budget and staffing plan
<b>Board-Approved Items</b>			<b>5.70</b>	<b>2</b>		

### --- In-Flight at Board/TAC ---

NPRR327	Operations	Operations Support	1.00	1	\$120k-\$130k	To be considered at 3/1/2012 TAC
NPRR393	Operations	Operations Support	1.00	1	\$120k-\$130k	To be considered at 2/21/2012 Board
NPRR408	Operations	Resource Integration	0.10	0	\$0	To be considered at 2/21/2012 Board
NPRR421	Operations	Operations Analysis	1.00	1	\$120k-\$130k	To be considered at 2/21/2012 Board
	Operations	Wholesale Client Svs	0.25	0	\$0	
<b>In-Flight at TAC</b>			<b>3.35</b>	<b>3</b>		

**Total of All Items**

**9.05**

**5**

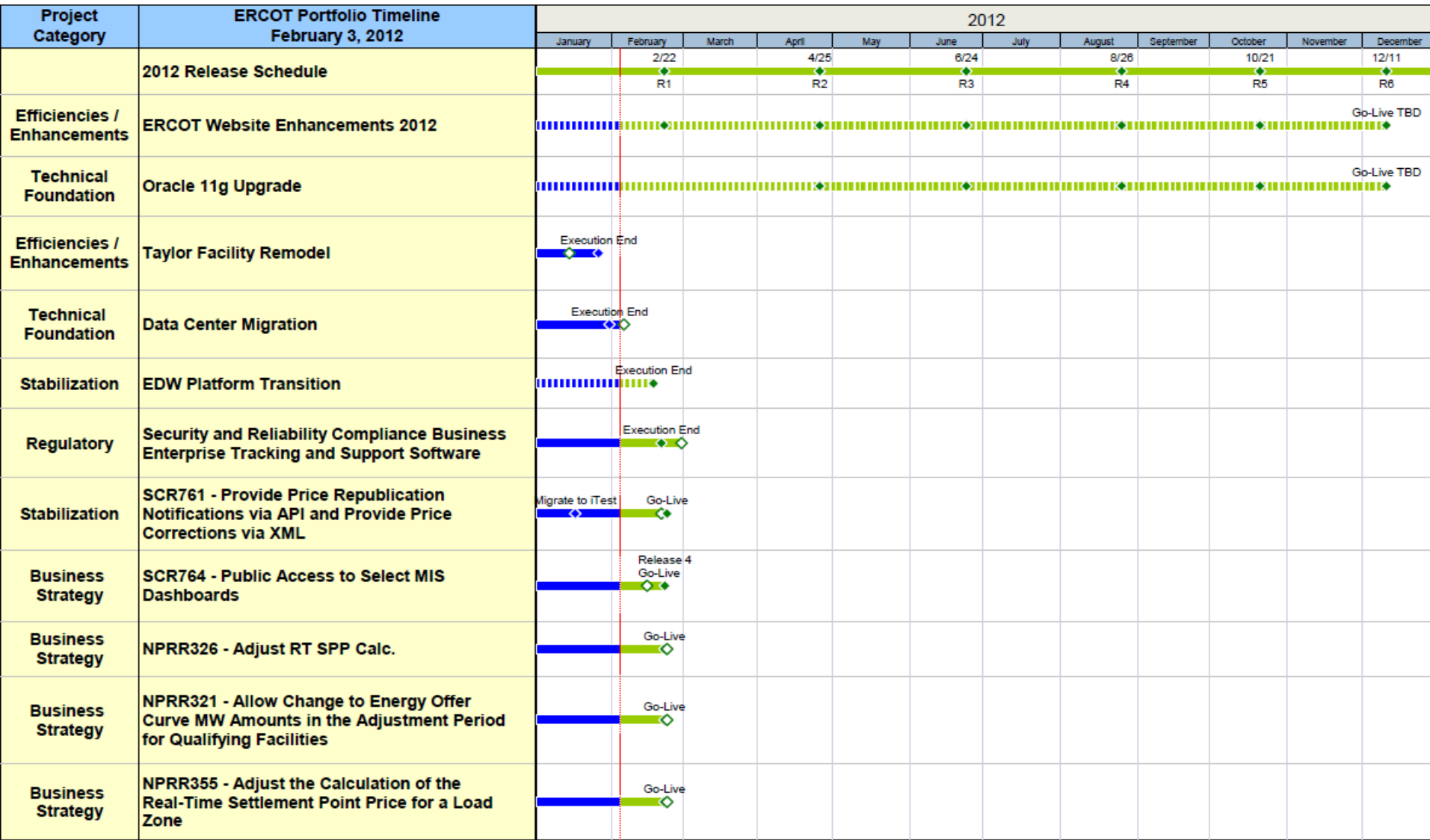
\*FTE = Full Time Equivalent Staff

This slide documents additional staff required to support ongoing ERCOT operations activities

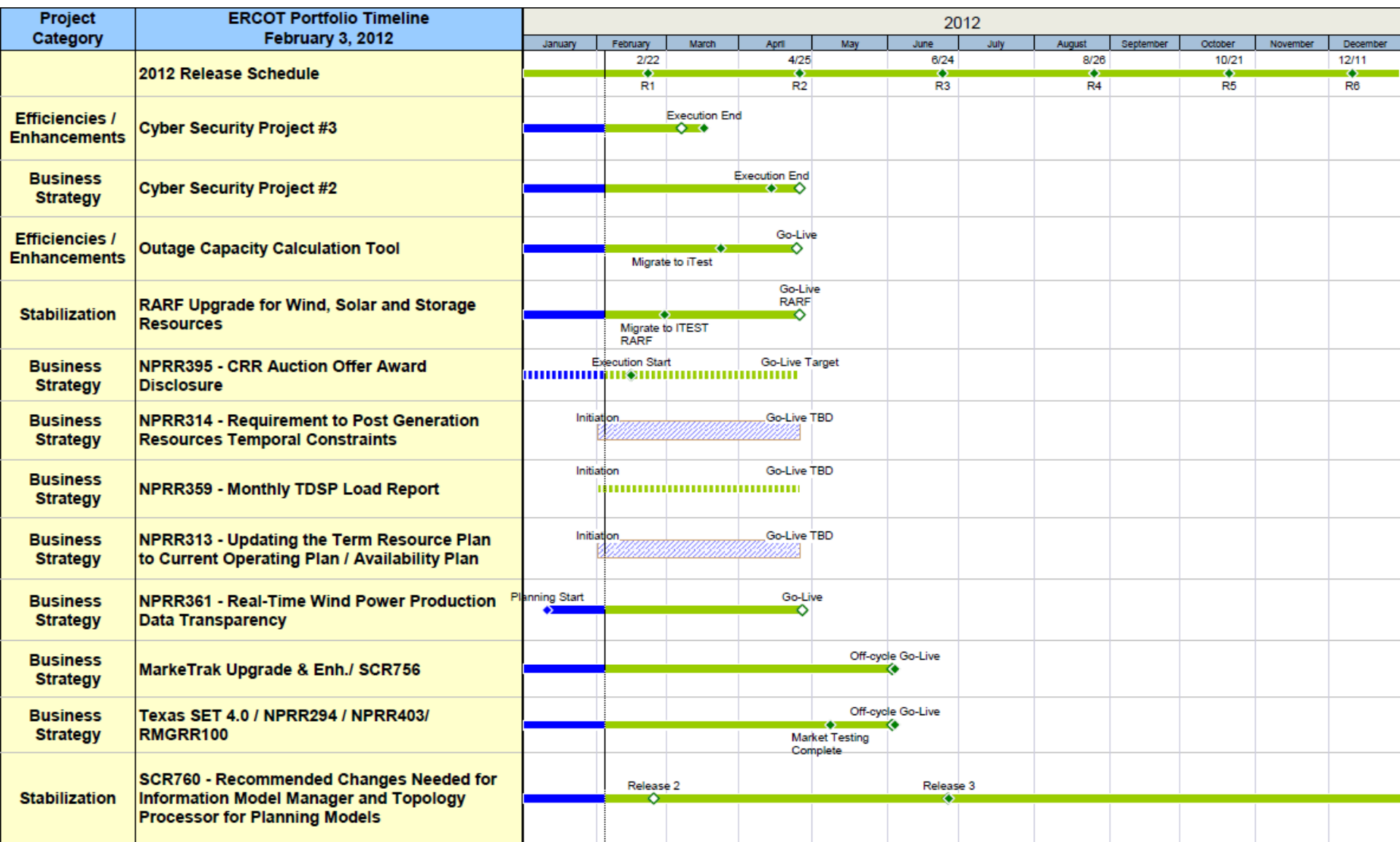
---

# Appendix

# ERCOT Portfolio Status Report (as of 2/03/2012)



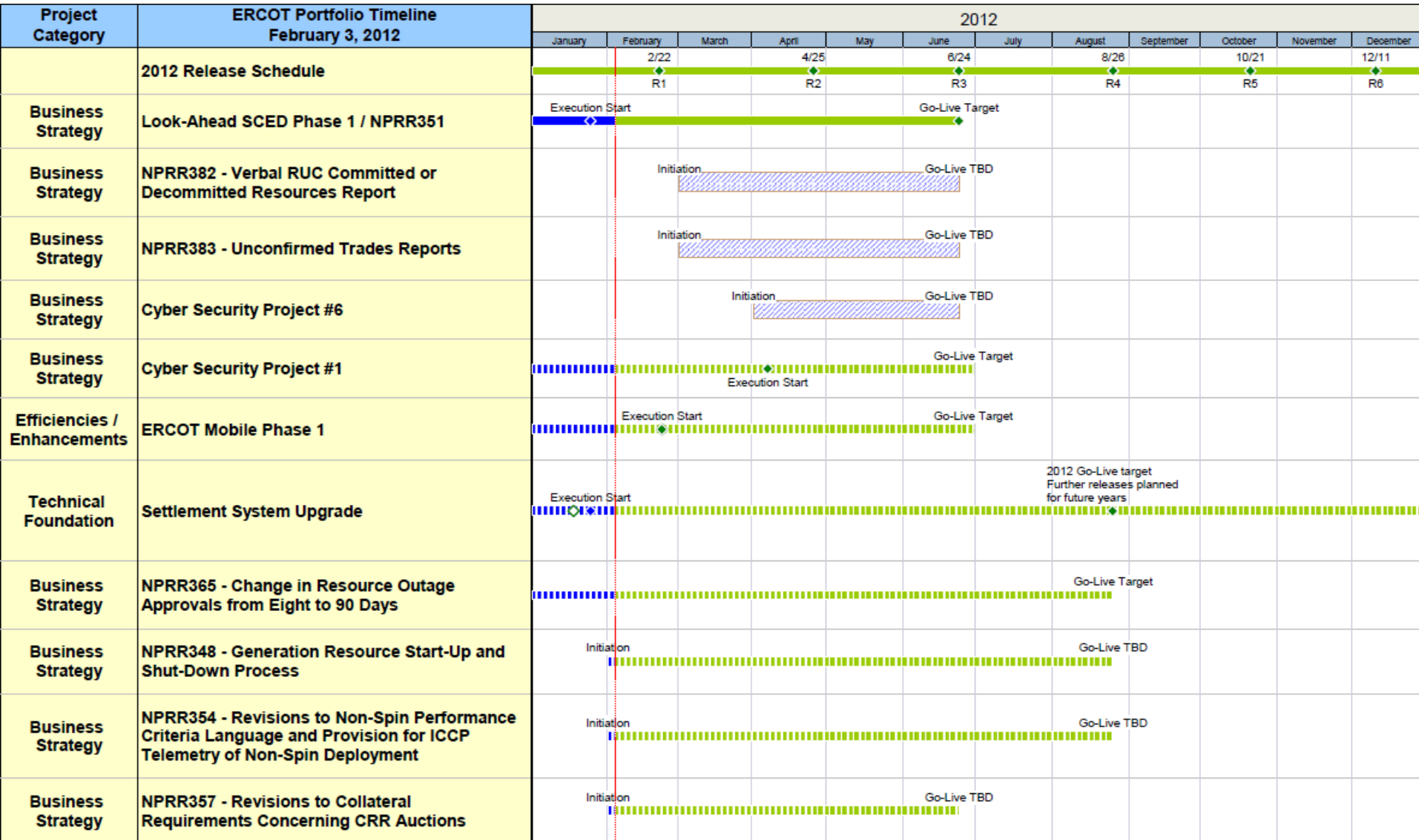
# ERCOT Portfolio Status Report (as of 2/03/2012)



◆ Milestone     
 ◇ Baseline     
 ▬ Initiation or Planning Phase     
 ▬ Execution Phase     
 ▬ Past Effort     
   Effort Not Started



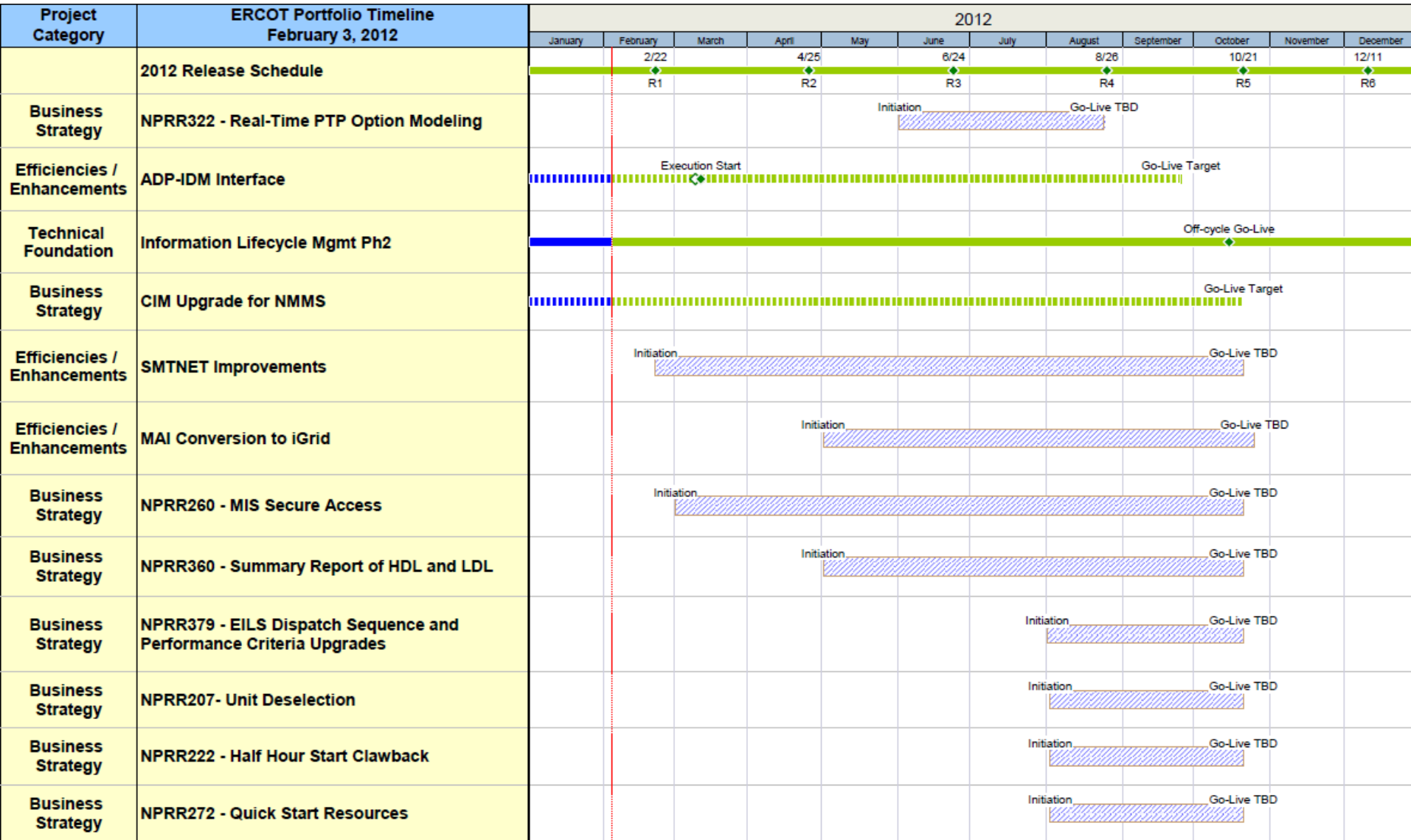
# ERCOT Portfolio Status Report (as of 2/03/2012)



◆ Milestone     
 ◇ Baseline     
 ▬ Initiation or Planning Phase     
 ▬ Execution Phase     
 ▬ Past Effort     
 ▬ Effort Not Started



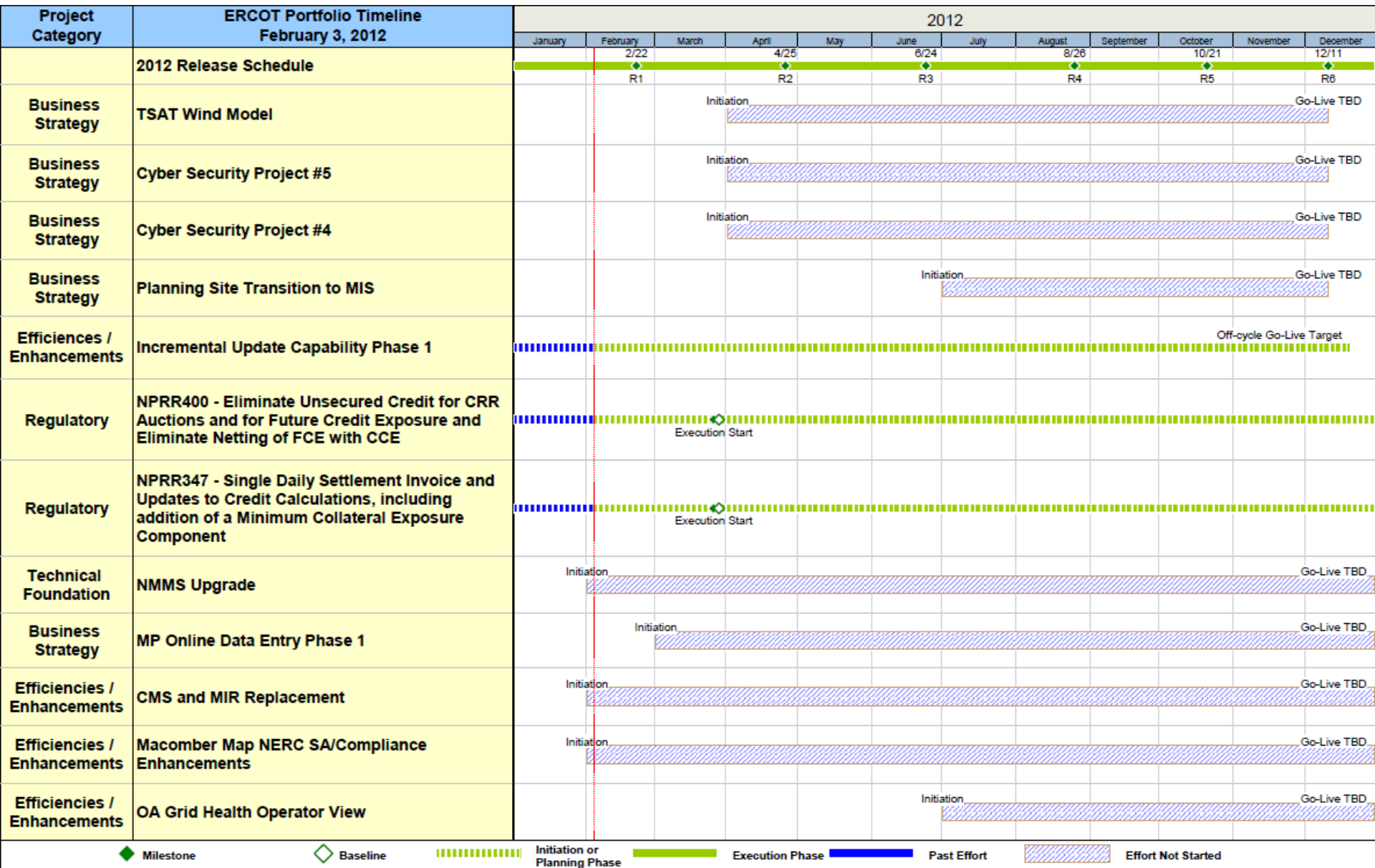
# ERCOT Portfolio Status Report (as of 2/03/2012)



◆ Milestone     
 ◇ Baseline     
 ▬ Initiation or Planning Phase     
 ▬ Execution Phase     
 ▬ Past Effort     
   Effort Not Started



# ERCOT Portfolio Status Report (as of 2/03/2012)



◆ Milestone     
 ◇ Baseline     
 ▬ Initiation or Planning Phase     
 ▬ Execution Phase     
 ▬ Past Effort     
   Effort Not Started

