



Grid Operations and Planning Report

Board of Directors Meeting
February 21, 2012

Content

- Summary
- January 2012 Operations
 - Peak Demand: Actual vs. Forecast
 - On-line Resources: Total at Peak and Wind
 - CPS1 Monthly Performance
 - Historical Peak and Minimum Loads
 - Day-Ahead Load Forecast Performance
 - Reliability Unit Commitment Capacity (RUC) by weather zone
 - Generic Transmission Limits (GTLs)
 - Advisories, Watches and Energy Emergency Alerts (EEAs)
 - Significant System Incidents
- Planning Activities
 - Summary
 - Generation Interconnection Requests
 - Wind Capacity

Summary

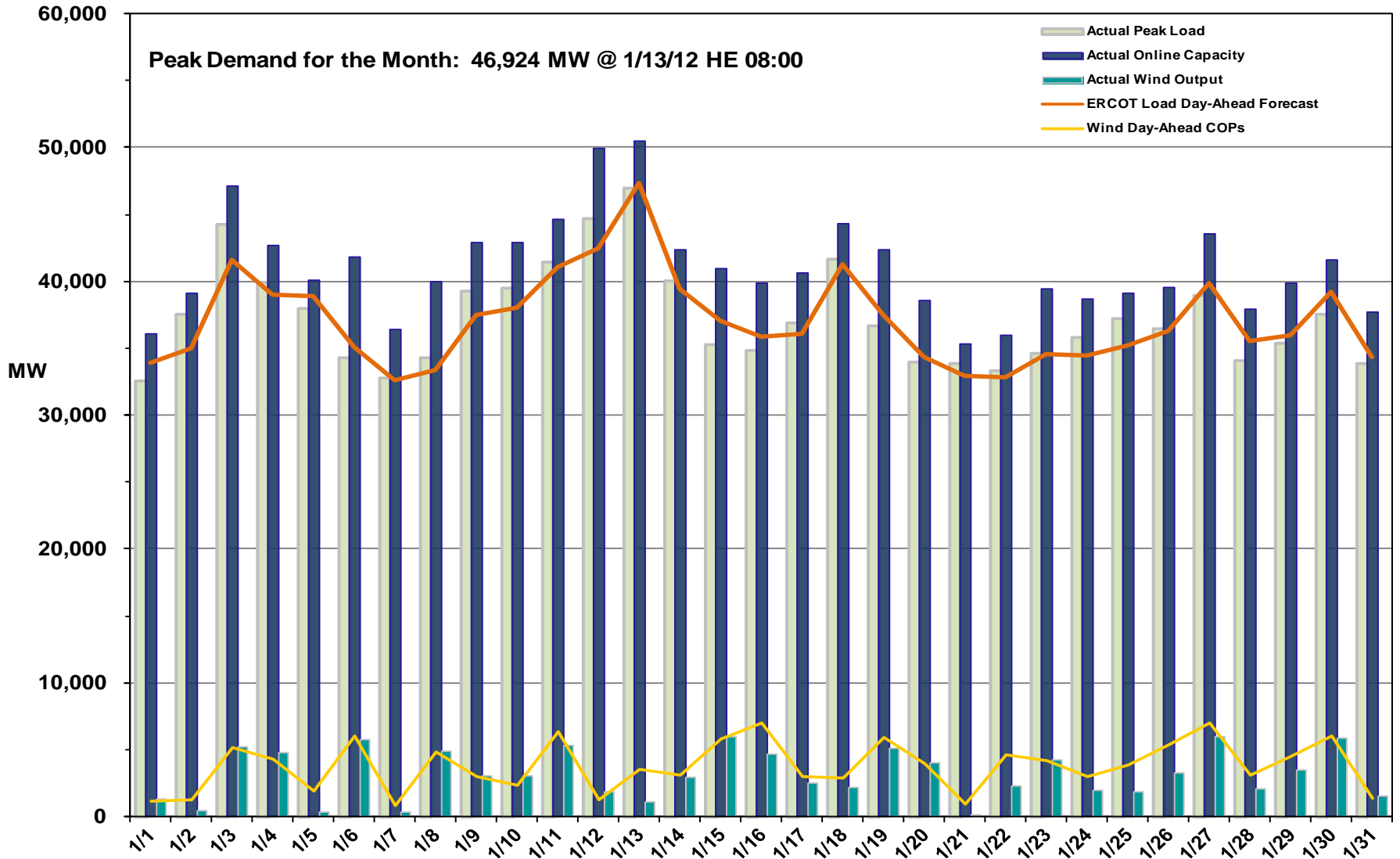
- **January 2012 Operations**

- The peak demand of 46,924 MW on January 13th was less than the mid-term forecast peak of 47,375 MW and less than the January 2011 actual peak demand of 50,737 MW
- Day-ahead load forecast error for January was 2.94%
- Advisory for Physical Responsive Capability (PRC) below 3000 MW was issued for 4 days
- No Watch for PRC under 2500 MW issued
- No EEA events issued
- One Transmission Watch for the North to Houston Interface issued

- **Planning Activities**

- 124 active generation interconnect requests totaling over 33,000 MW as of January 31, 2012. Nine fewer requests and 5,000 MW less than December 31
- 9,829 MW wind capacity on line January 31, 2012, 225 MW more than December 31, 2011

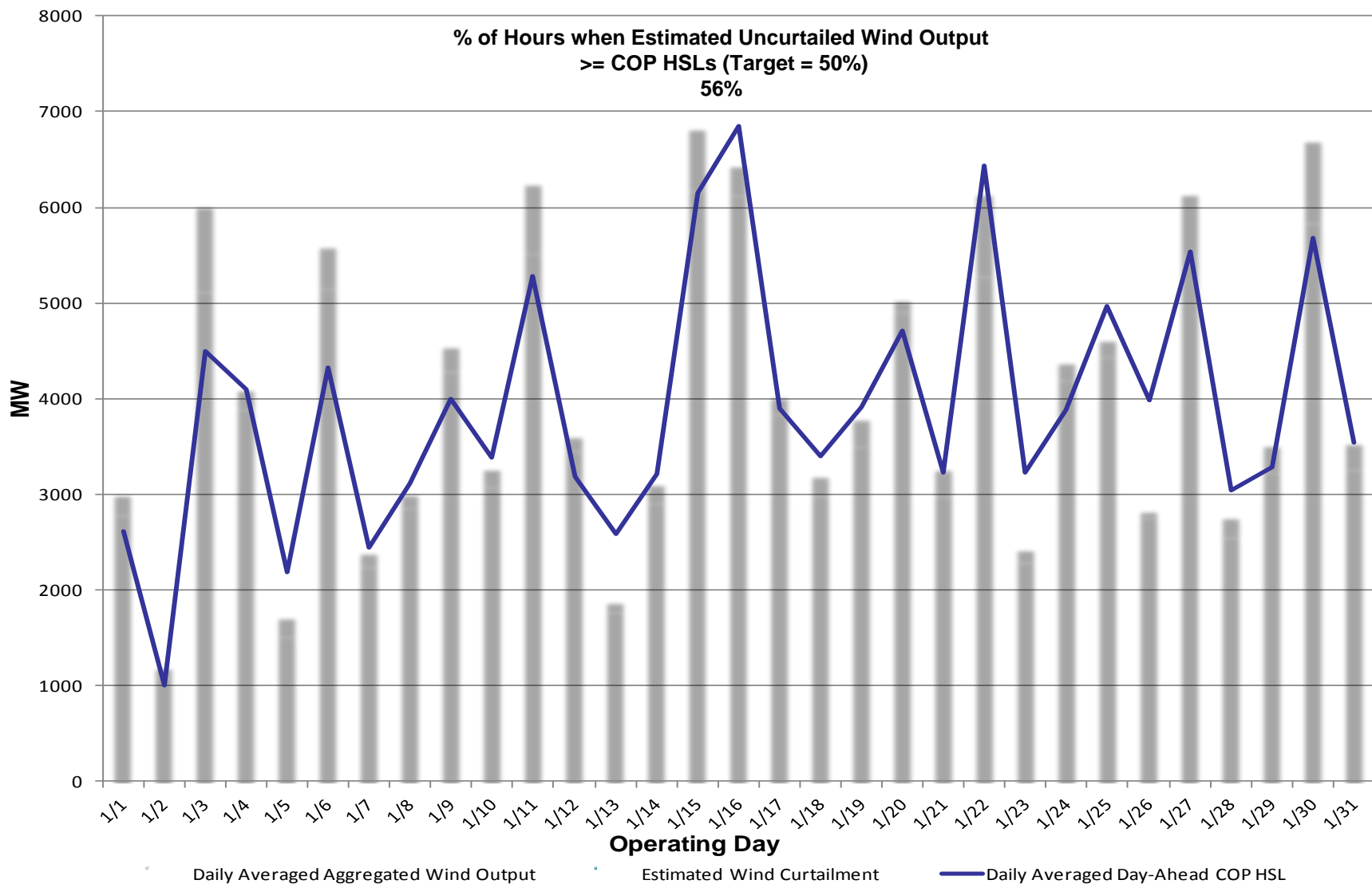
January 2012 Daily Peak Demand: Hourly Average Actual vs. Forecast, Wind Day-Ahead Commercial Operations Subcommittee (COPs) & On-line Capacity at Peak



Note: All data are hourly averages during the peak load hour obtained from COPs, and EMMS.

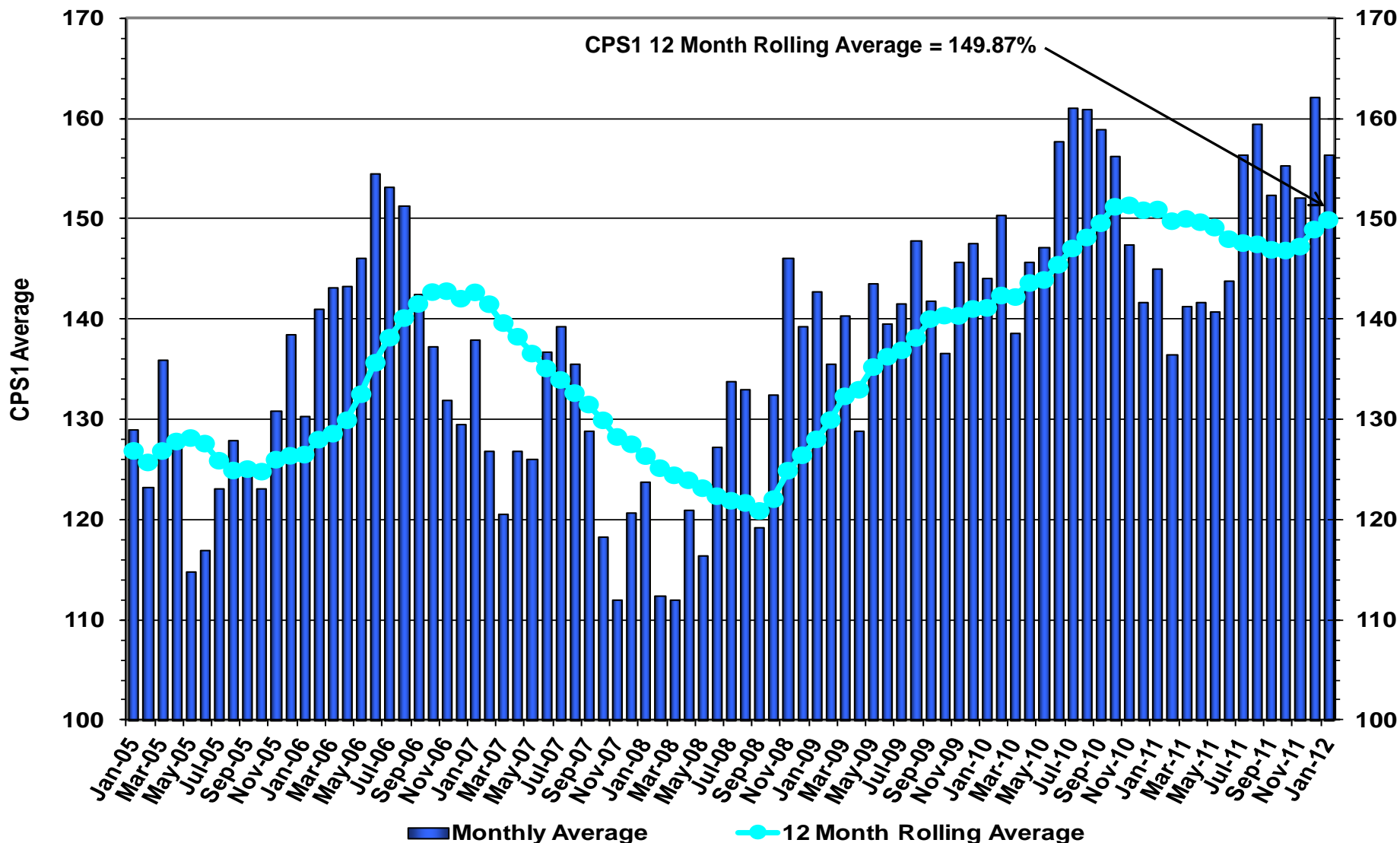


January 2012: Actual Wind Output plus Curtailments vs. Wind Day-Ahead COPs for All Hours

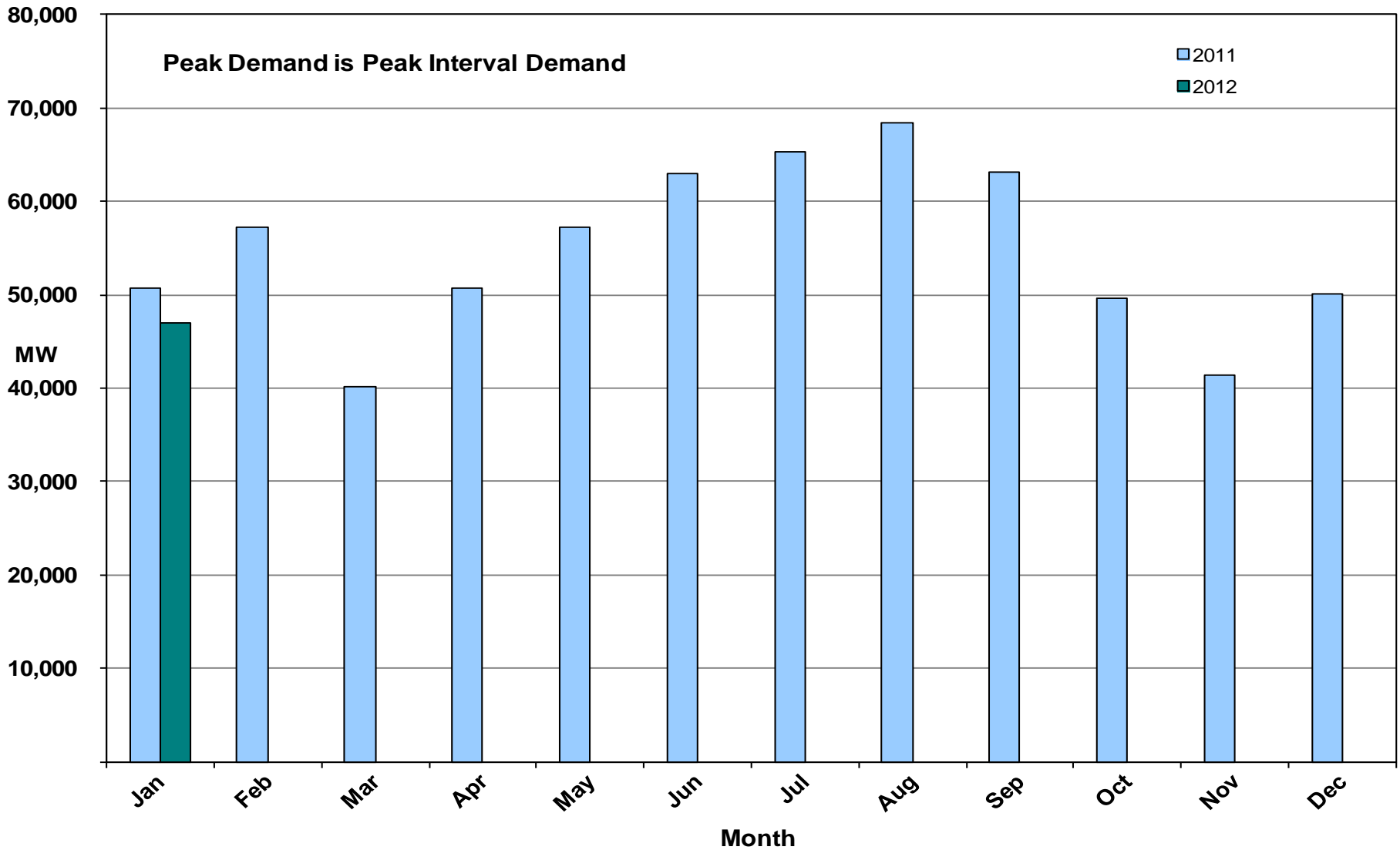


Note: QSEs must use the AWST 50% probability of exceedance forecast as the HSL in their COPs

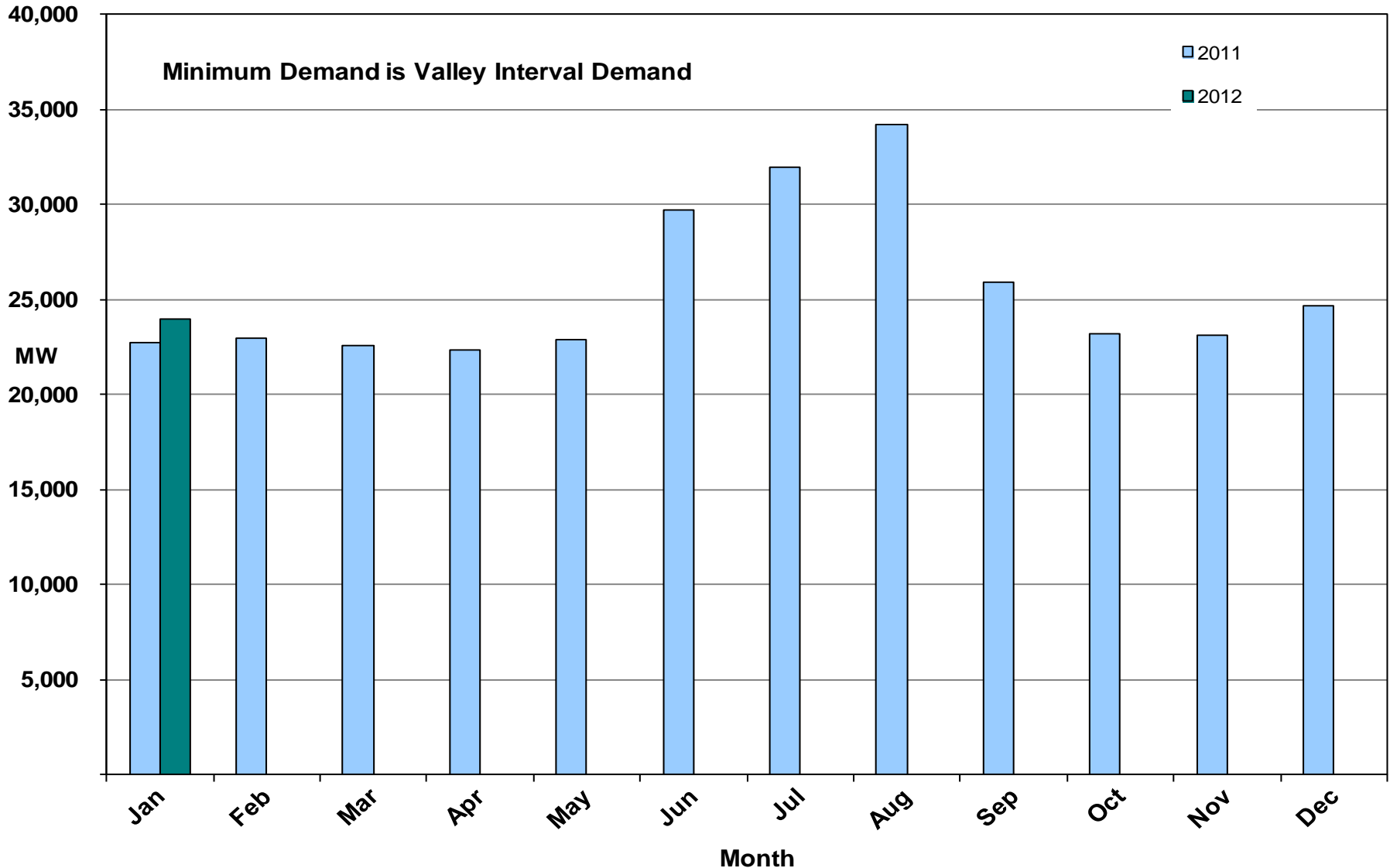
January 2012 ERCOT's Control Performance Standard (CPS1) Monthly Performance



January 2012: Monthly Peak Actual Demand



January 2012: Monthly Minimum Actual Demand



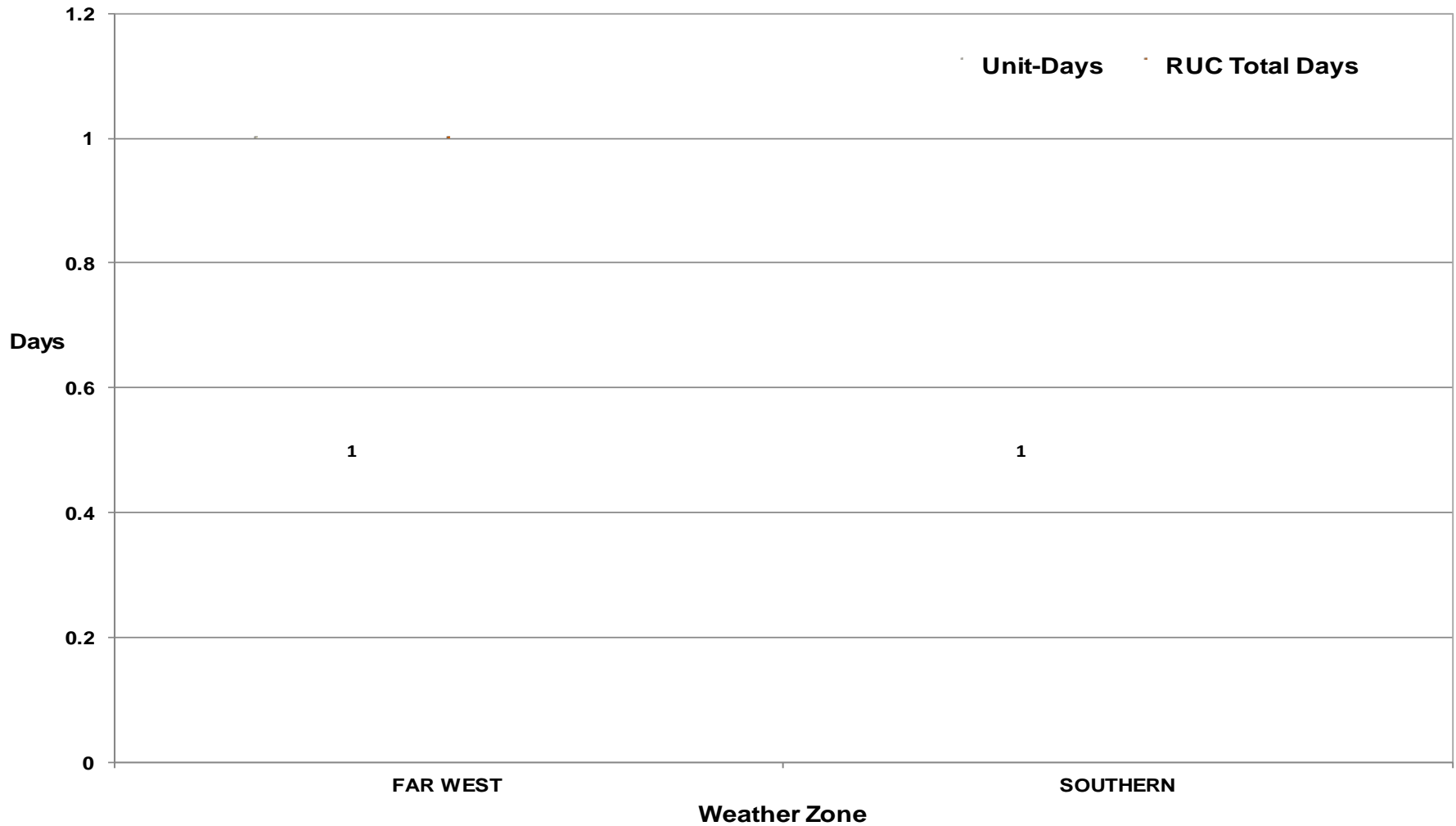
Day-Ahead Load Forecast Performance in January 2012

Mean Absolute Percent Error (MAPE) for ERCOT Mid-Term Load Forecast (MTLF) Run at 14:00 Day Ahead

	2009 MAPE	2010 MAPE	2011 MAPE	2012 MAPE	January 2012 MAPE	
Average Annual MAPE	3.11	2.83	2.83	2.94	2.94	
Lowest Monthly MAPE	1.93	2.24	1.63	1.30	Lowest Daily MAPE	1.30 Jan - 04
Highest Monthly MAPE	4.11	3.79	3.55	5.10	Highest Daily MAPE	5.10 Jan - 16

Reliability Unit Commitment (RUC) Capacity by Weather Zone in January 2012

RUC Commitments by Weather Zone



January 2012: Generic Transmission Limits (GTLs)

GTLs	Jan 11 Days GTLs	Nov 11 Days GTLs	Dec 11 Days GTLs	Jan 12 Days GTLs	Last 12 Months Total Days (Dec10 – Dec11)
North – Houston	0	0	0	1 Jan 14	2
West – North	18	20	18	26 Jan(3-6,8-12,14-31)	254
Valley Import	3	0	0	0	14

GTL: A transmission flow limit more constraining than a Transmission Element’s normal limit established to constrain flow between geographic areas of the ERCOT Transmission System that is used to enforce stability and voltage constraints that cannot be modeled directly in ERCOT’s transmission security analysis applications.

Note: This table lists how many times a constraint has been activated to avoid exceeding a GTL limit, it does not imply an exceedance of the GTL occurred.

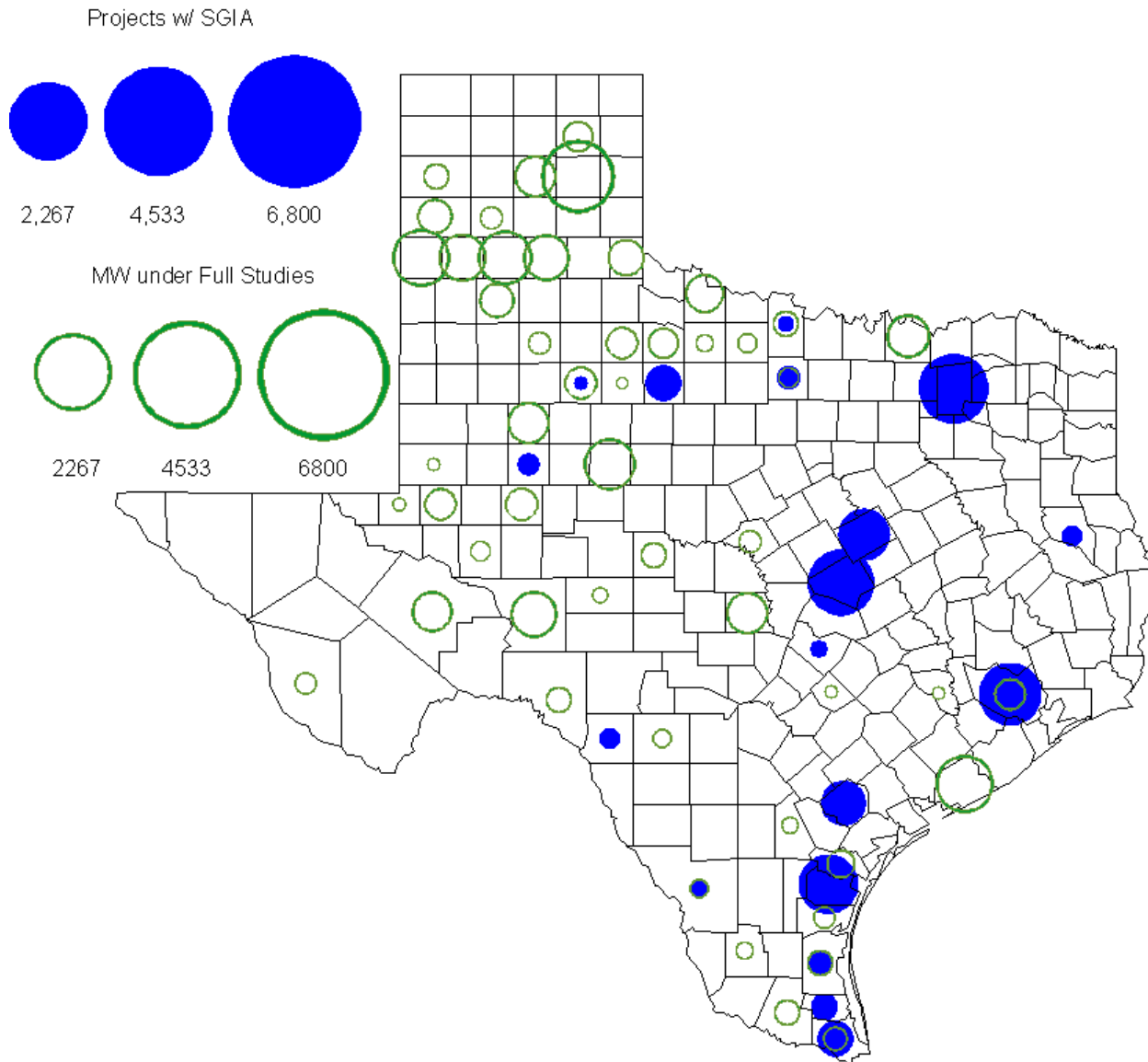
Advisories and Watches in January 2012

- **Advisories issued for Physical Responsive Capability (PRC) below 3000 MW.**
 - Issued 4 Days
- **Watches issued for Physical Responsive Capability (PRC) below 2500 MW.**
 - None
- **Transmission Watches**
 - 1/14 02:49 ERCOT issued a Transmission Watch for North – Houston interface. Watch canceled at 03:40
- **Energy Emergency Alerts**
 - None

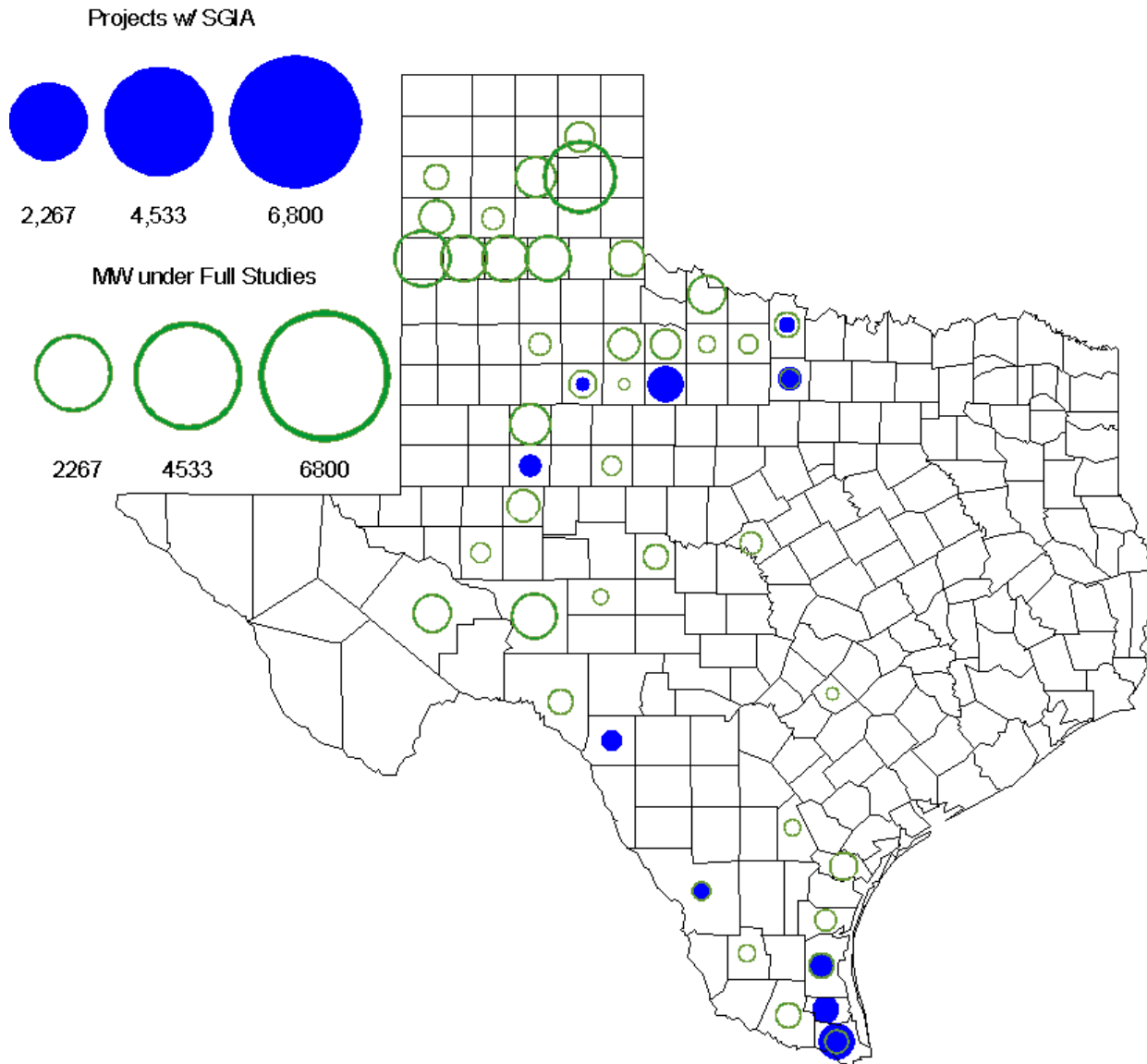
Planning Summary

- **ERCOT is currently tracking 124 active generation interconnection requests totaling over 33,000 MW. This includes almost 18,000 MW of wind generation.**
- **ERCOT is currently reviewing proposed transmission improvements with a total cost of \$33.1 Million.**
- **Transmission Projects endorsed in 2012 total \$319.6 Million.**
- **All projects (in engineering, routing, licensing and construction) total approximately \$9.8 Billion.**
- **Transmission Projects energized in 2011 total about \$694.8 million**

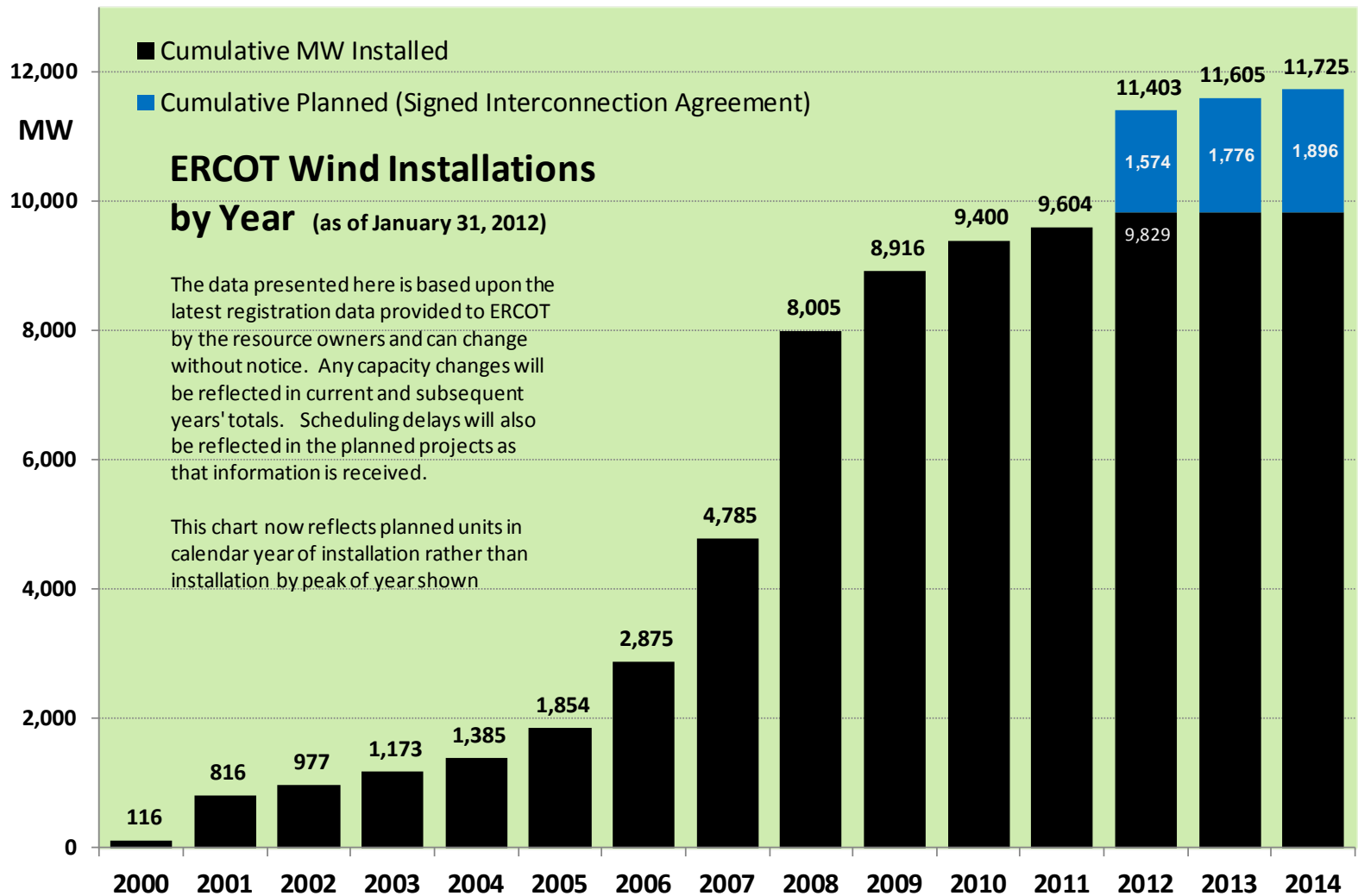
County Location of Planned Generation with Interconnection Requests (all fuels) December 2011



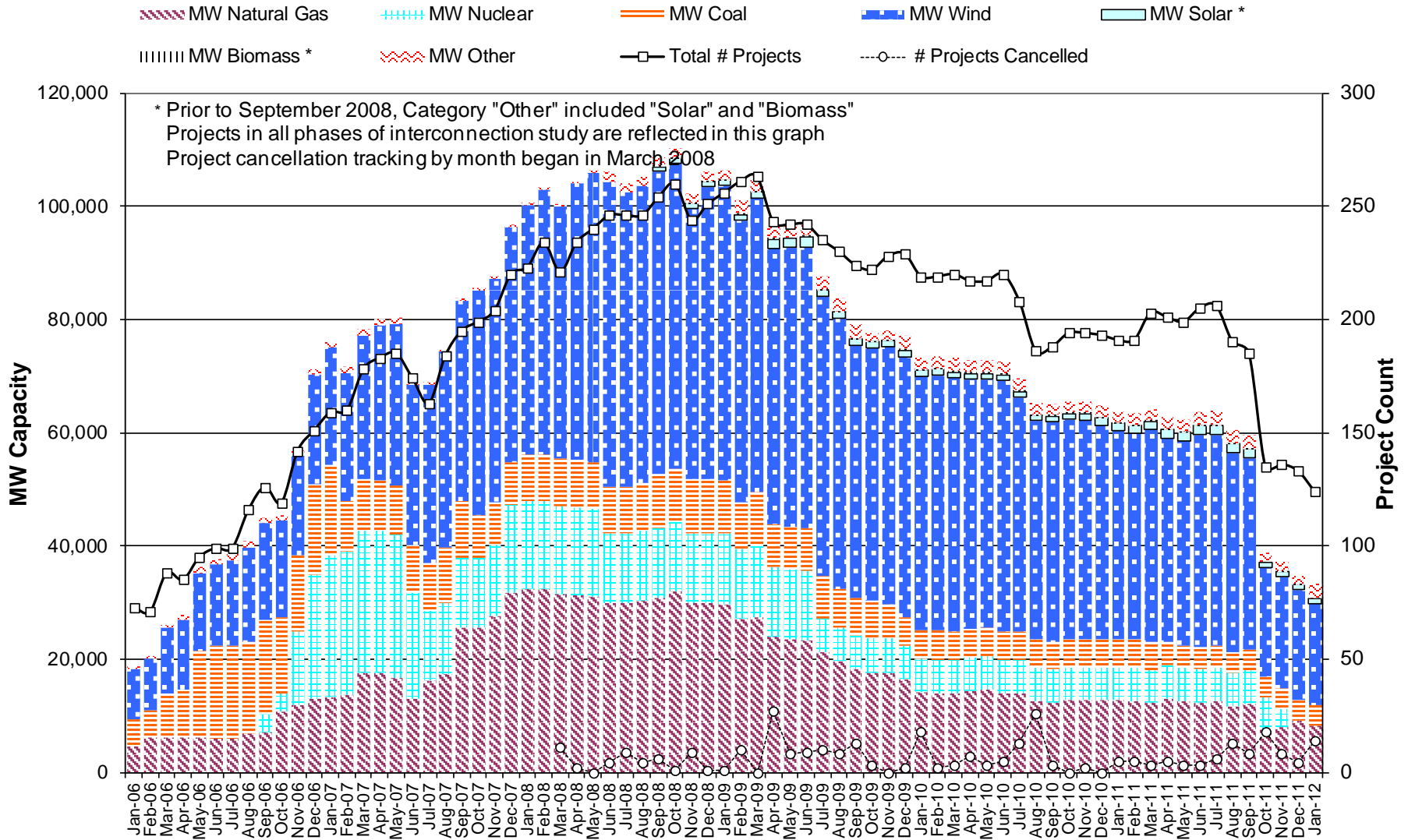
County Location of Planned Generation with Interconnection Requests (Wind) December 2011



Wind Generation



Generation Interconnection Activity by Fuel



Generation Interconnection Activity by Project Phase

