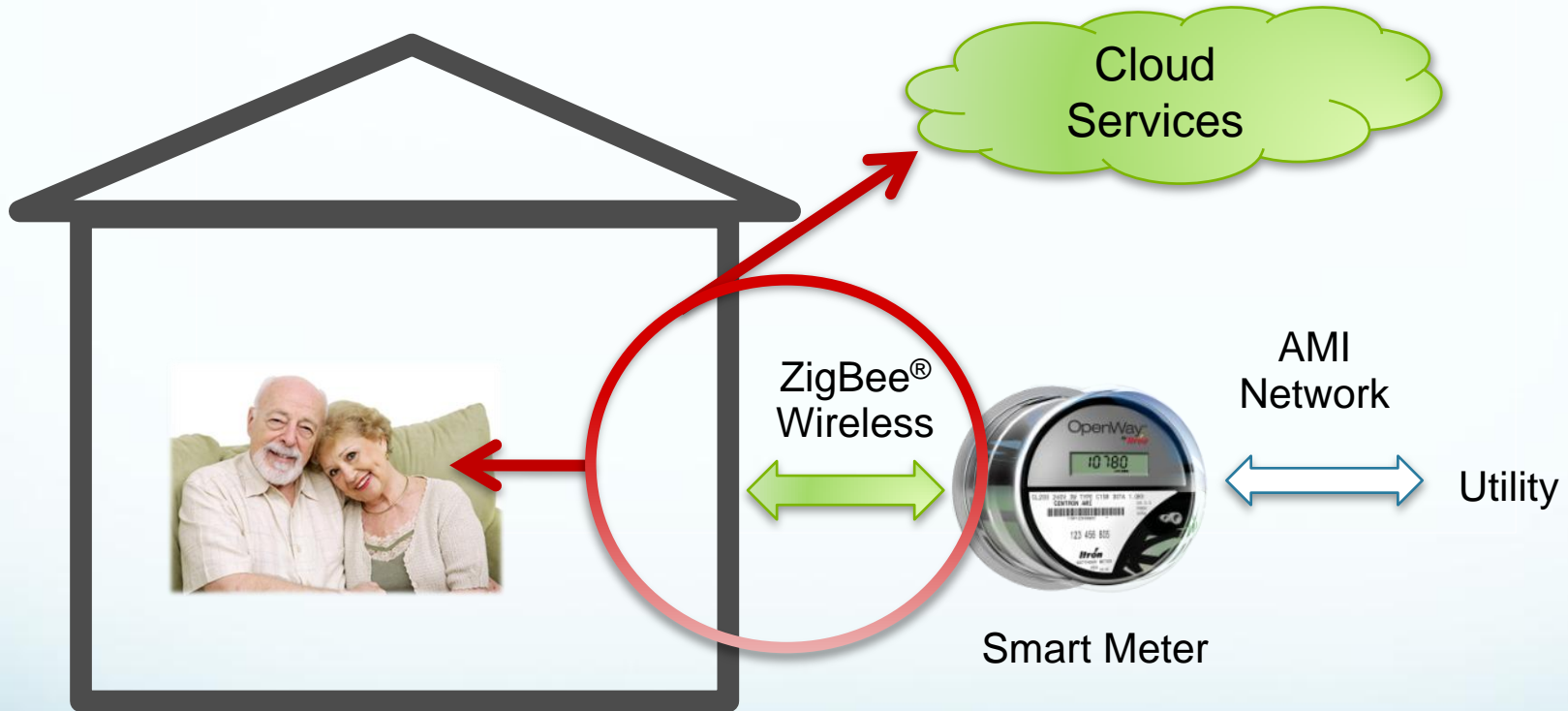




rainforest

a u t o m a t i o n

What We Do



EMU™

Energy Monitoring Unit

- Certified
 - ✓ ZigBee Smart Energy 1.0
 - ✓ Certicom Production Certificates
- Simple
 - ✓ Straightforward user interface
 - ✓ Easy commissioning
 - ✓ Battery operation
- Versatile
 - ✓ Multiple languages, prepay, text messages, gas, water
 - ✓ Custom development available
- Low Cost



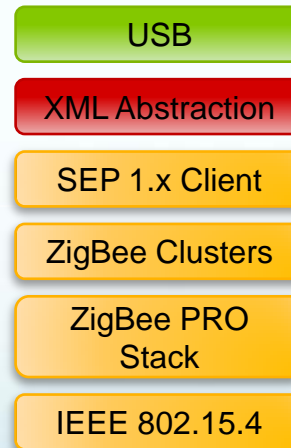
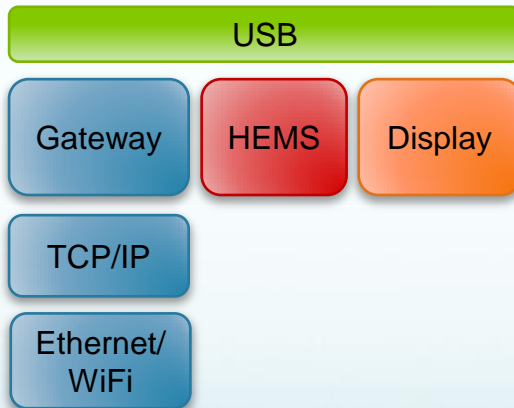
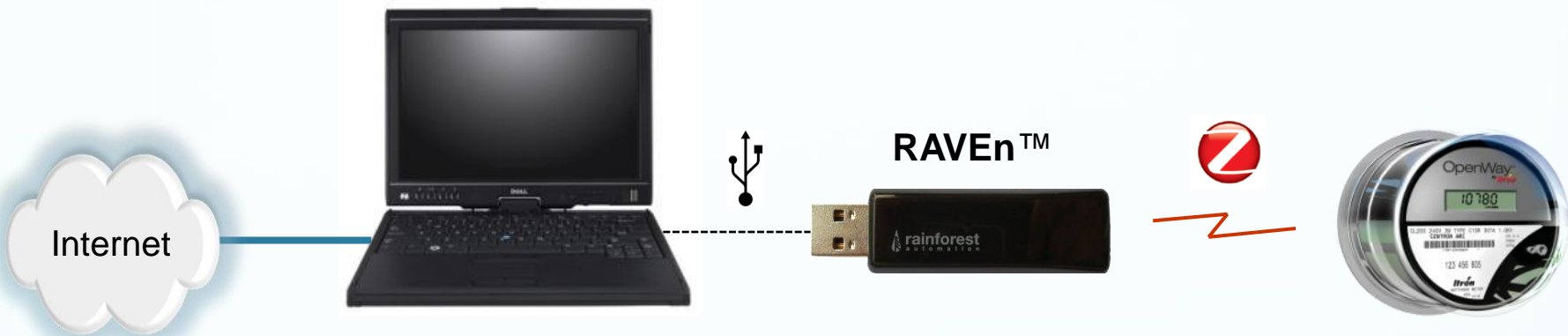
RAVEⁿ™

Radio Adapter for Viewing Energy

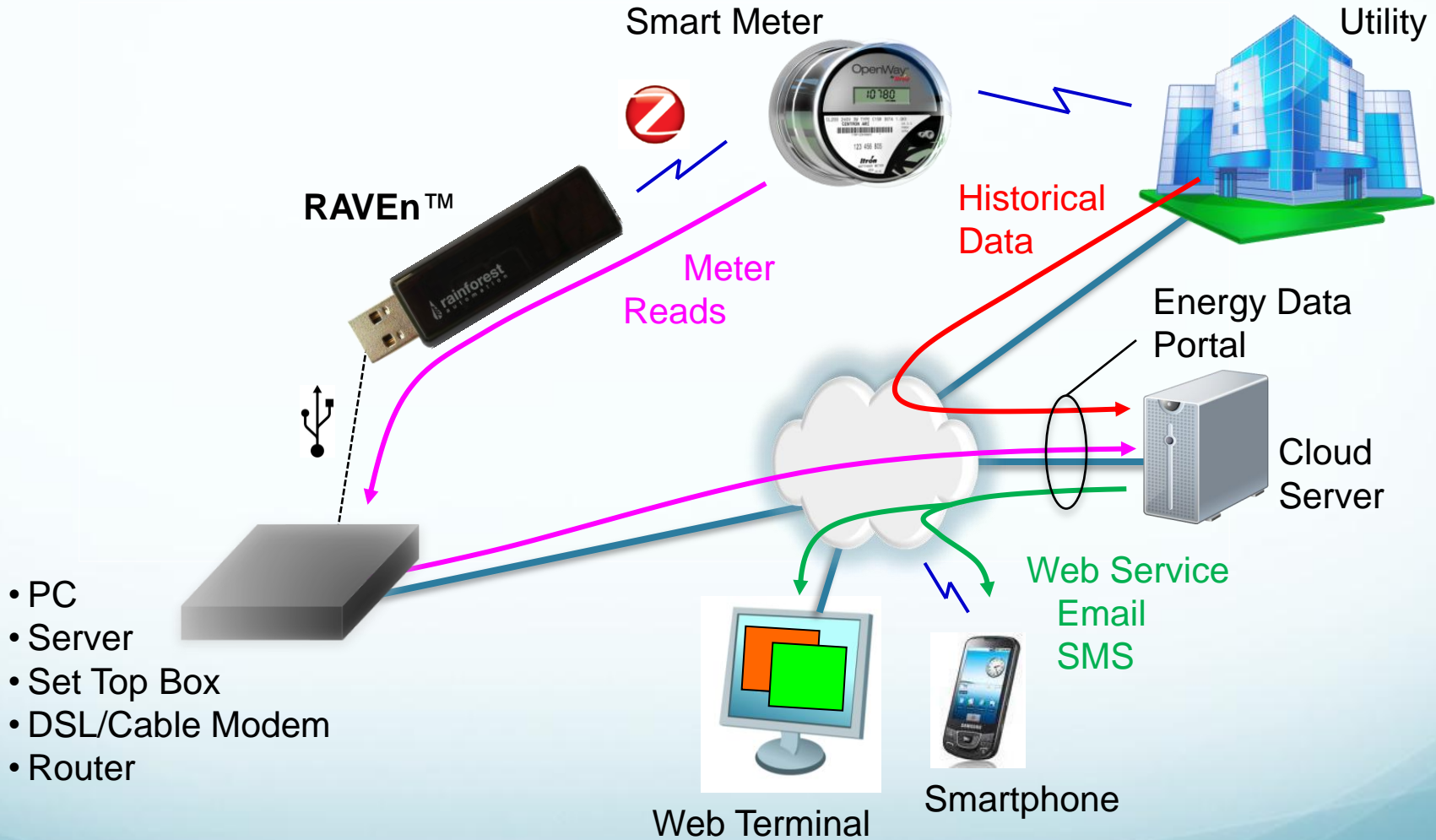


- IHD on a USB stick
- Provides smart meter data to any PC
- Simple interface to third-party software

Works with Any USB Host



Data Flow

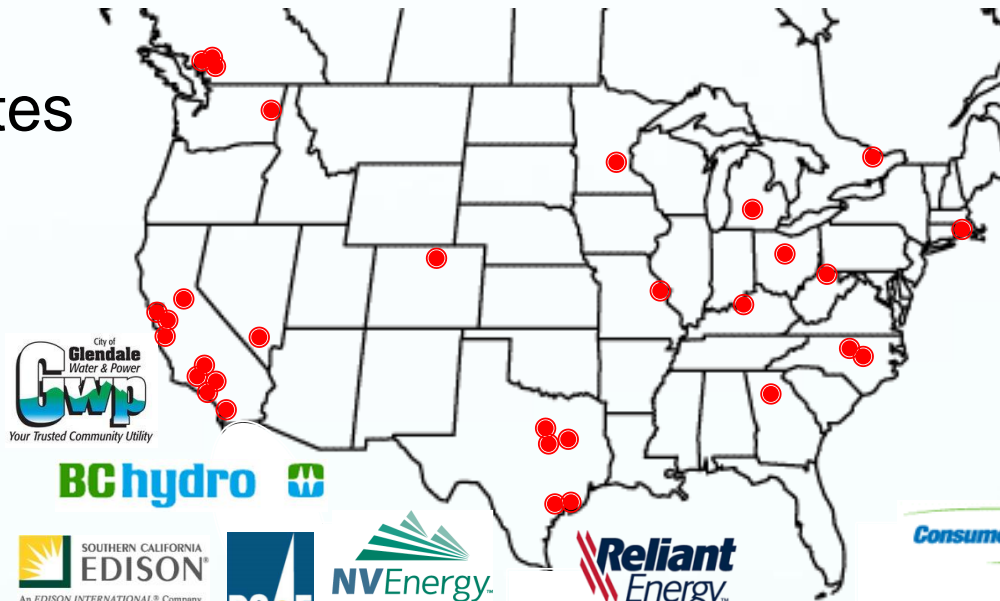


We Work With

- Utilities
- Home network equipment providers
 - Home Automation
 - Home Energy Management System (HEMS)
 - LAN equipment (routers, PCs)
- Communications network providers
 - Cable companies, Telcos, Mobile
- Cloud service providers
- Consumers

Market Traction

- 40+ evaluation sites worldwide
- US, Canada, Australia, UK



Texas Experience

- TDU lab evaluations
- REP lab evaluations
- ZigFest interop events
- CenterPoint IHD field trial
- Direct consumer trial

Issues Encountered

- Deployment of HAN devices is very slow!
- SMT portal still has problems
- SMT user interface is daunting for consumers
 - 94 page User Guide
- #1 customer support issue is provisioning
 - Major root cause is user input error
 - Recommend automating user input

Pricing Conundrum

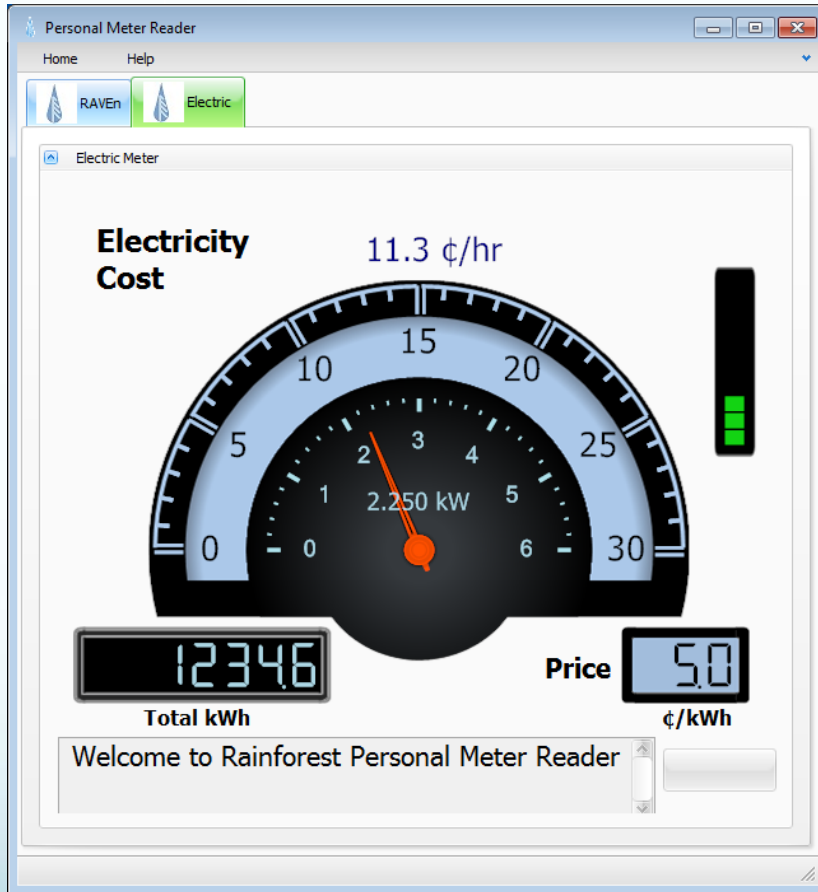
- Energy price is competitive information
 - REPs do not want price published in meter
- Manual input of price is tedious and error-prone
- How to do price-based Demand Response?
- Need an encrypted channel for pricing
 - Rainforest can provide this

Good Environment for HAN

- Open, competitive market
 - The only AMI network in the US where HAN devices can be freely provisioned
- Strong user demand for HAN devices
- Positive response from users

Additional Slides

Personal Meter Reader™ SW



- Free download with **RAVEen™**
- Real-Time energy usage on your PC
- Easy to use

Internet Appliance



- 8" color touch screen
- Open-source Linux software
- 1500 free apps available
- Acts like a simple Gateway

Chumby App



Other Form Factors



Chumby R



Chumby 8



Sony DASH

Message Tunneling

- Short, text-based packets imbedded in standard ZigBee text messages
 - Transparent to the AMI network and smart meter
- Initial price can be sent in “Welcome” message
 - No manual user input needed
- Price can be encrypted for security



Smart Plug



- ZigBee enabled switched plug
- Responds to DRLC and Price events
- Measures energy delivered
 - Supports Simple Metering Cluster



Load Controller

- ZigBee enabled high power load switch
- 3 relays, each up to 30A, 240V
- Responds to DRLC and Price events
- Measures energy delivered
 - Supports Simple Metering Cluster



PREVIEW

Thermostat



- ZigBee PCT
- Responds to DRLC and Price events
- Easy to use

Contact Us

www.rainforestautomation.com

bill.richardson@rainforestautomation.com