



Commercial Market Operations Report

Dale Goodman

Board of Directors Meeting
August 16, 2011

Summary

Retail Activity

- **Overall Activity** – Switching and Move-In activity in July was comparable to the previous year's activity.
- **Transaction Performance Measures** – All performance measures exceeded the 98% target.
- **Advanced Metering** – Now settling 3.4 M Advanced Meters in the Market as of July 2011. AMS Load Volume was 23.0% in July compared to 20.7% in June.

Wholesale Activity **(July 2011 numbers will be provided prior to Board meeting)**

- **Settlements & Billing Performance** –
- **Settlement Dollars** –
- **Reliability Services** –
- **Capacity Services** –
- **Congestion Management** –
- **Revenue Neutrality** –
- **Verifiable Costs** –
- **Disputes** – The volume of submitted disputes remains low. Columns were added to the report to show the three market's current and year-to-date combined totals.
- **REPs and QSEs Added/Terminated**
 - 0 new REPs
 - 0 terminated REP
 - 7 new QSEs
 - 0 terminated QSEs
 - 5 of the 7 new QSEs are Level 1 additions.
 - QSE Level Change category added.

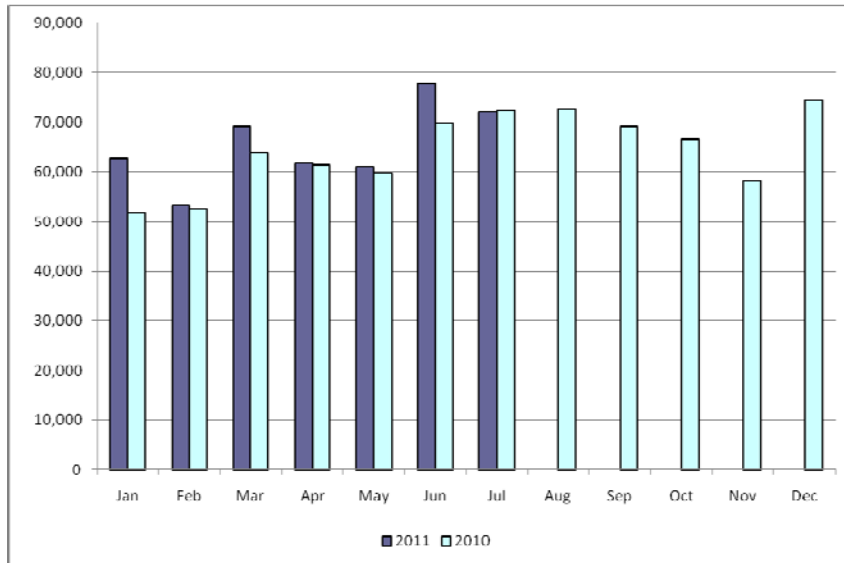
Overall Activity

Retail Transactions Summary

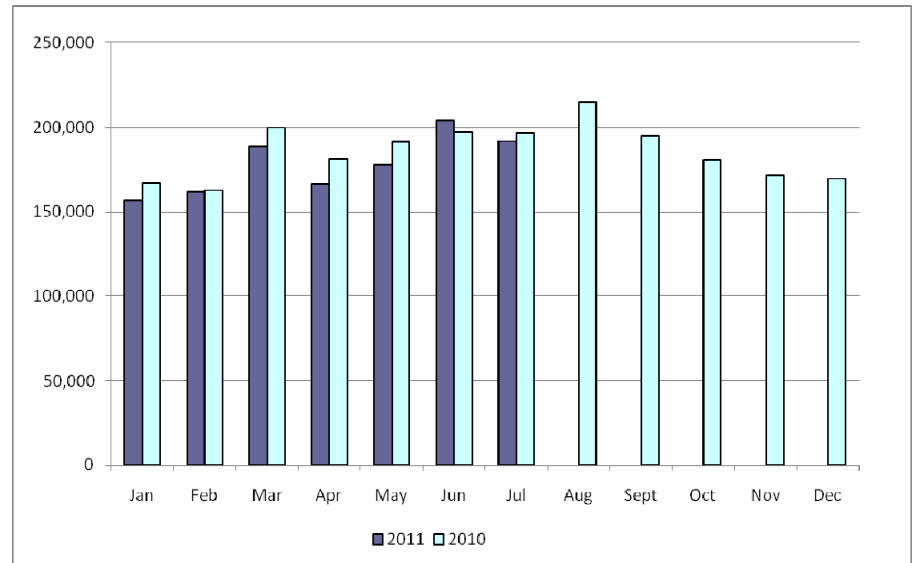
Transaction Type	YTD		July	
	<u>07/29/2011</u>	<u>07/31/2010</u>	<u>2011</u>	<u>2010</u>
Switches	457,577	431,744	72,044	72,438
Move - Ins	1,247,896	1,296,153	191,916	196,580
Move Out	644,162	718,258	100,829	111,341
CSA (Continuous Service Agreement)	216,749	251,930	49,643	35,357
Mass Transition	22,056	0	0	0
Total	2,588,440	2,698,085	414,432	415,716
Since June 1, 2001	42,970,032			

Retail Transactions Summary

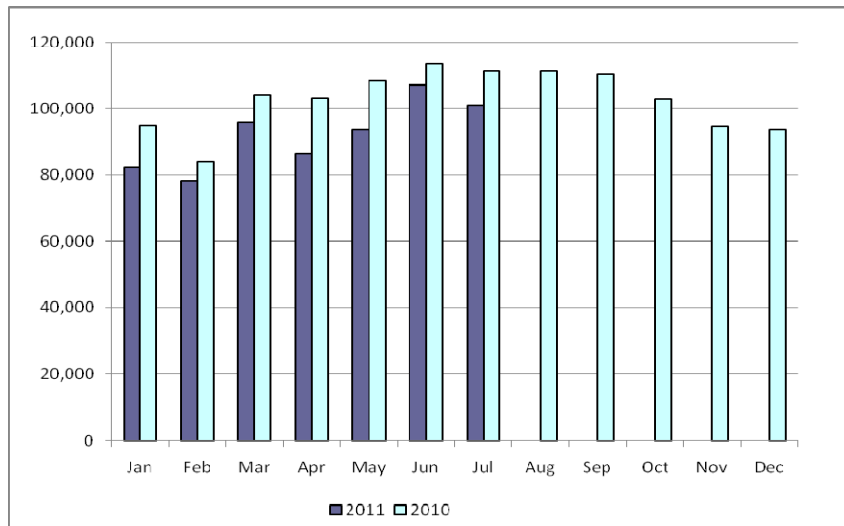
Switches



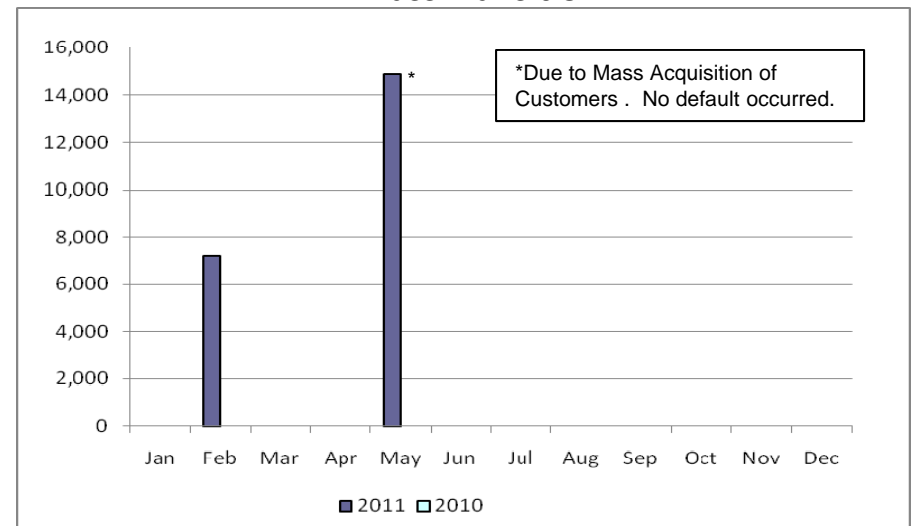
Move-Ins



Move-Outs



Mass Transition

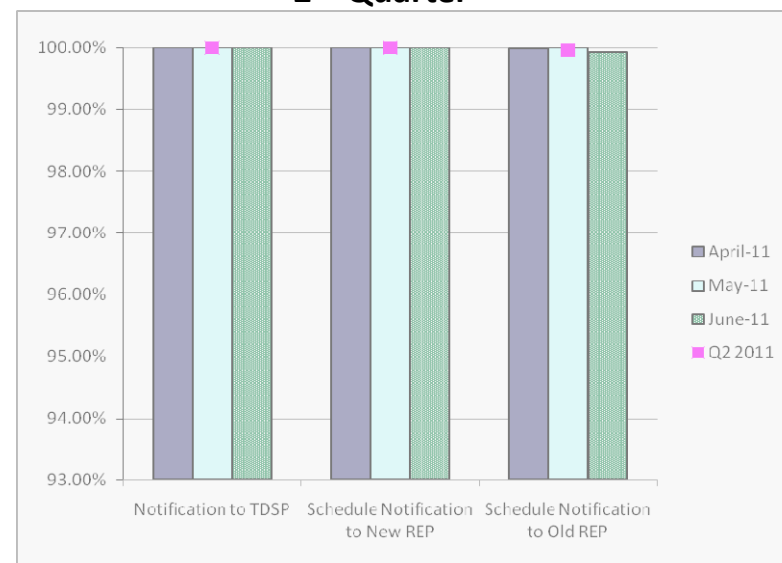


Retail Performance Measures – 2011 Switch

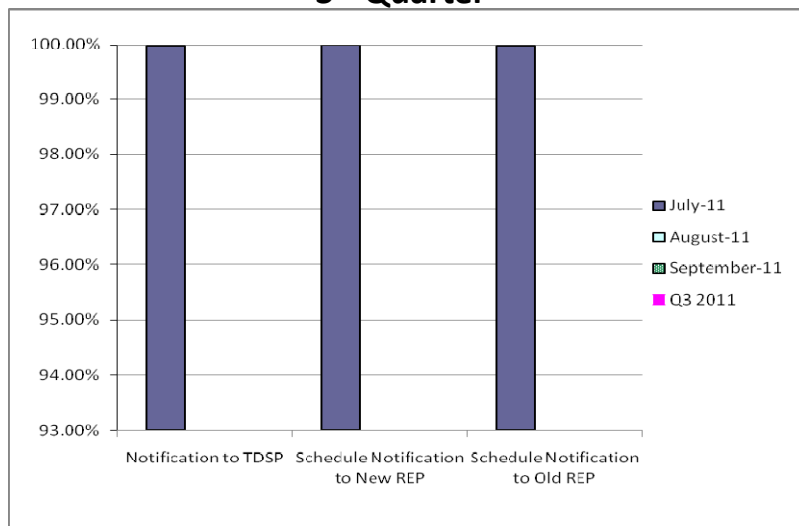
1st Quarter



2nd Quarter



3rd Quarter



4th Quarter

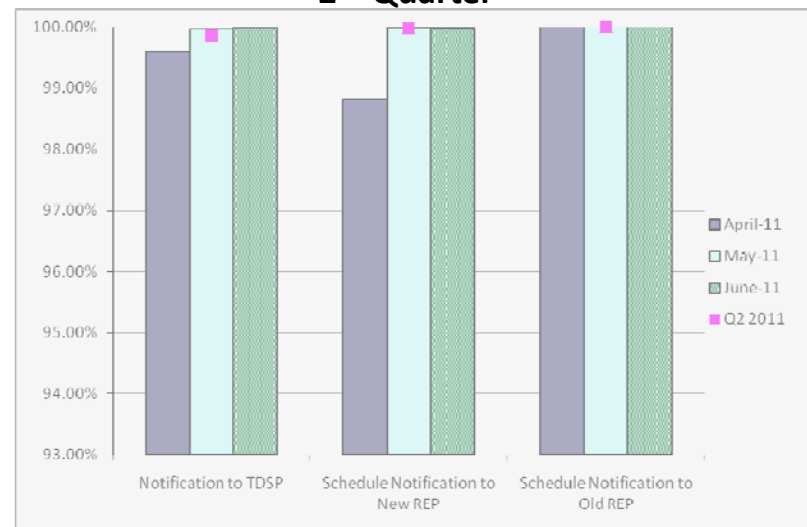


Retail Performance Measures – 2011 Move-In / Priority

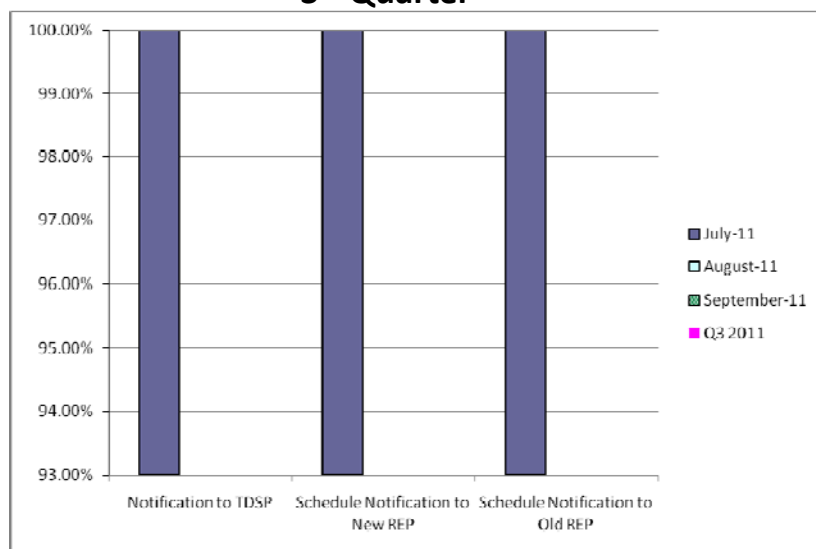
1st Quarter



2nd Quarter



3rd Quarter

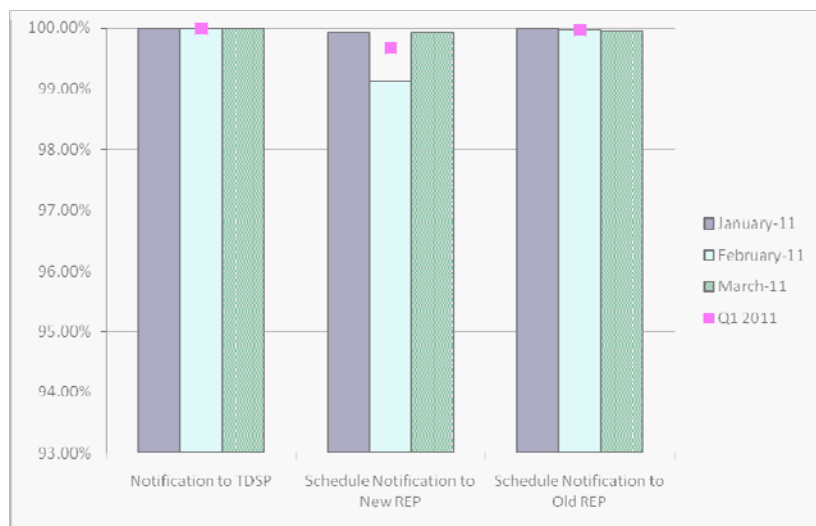


4th Quarter

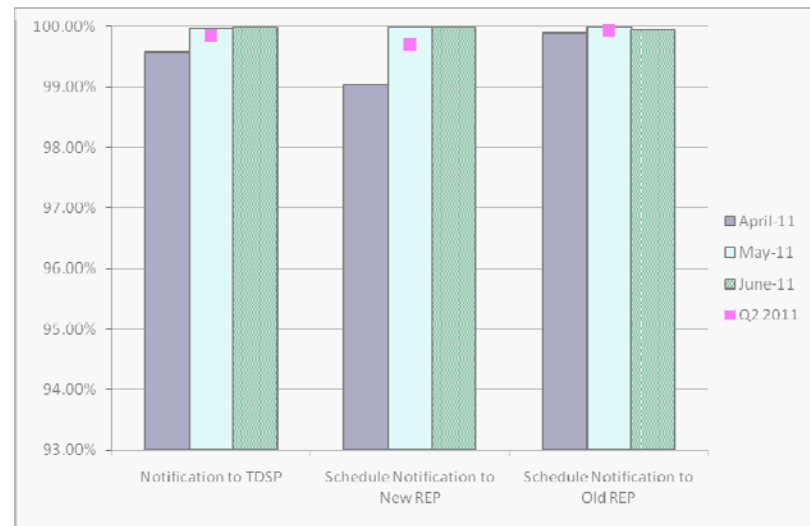


Retail Performance Measures – 2011 Move-In / Standard

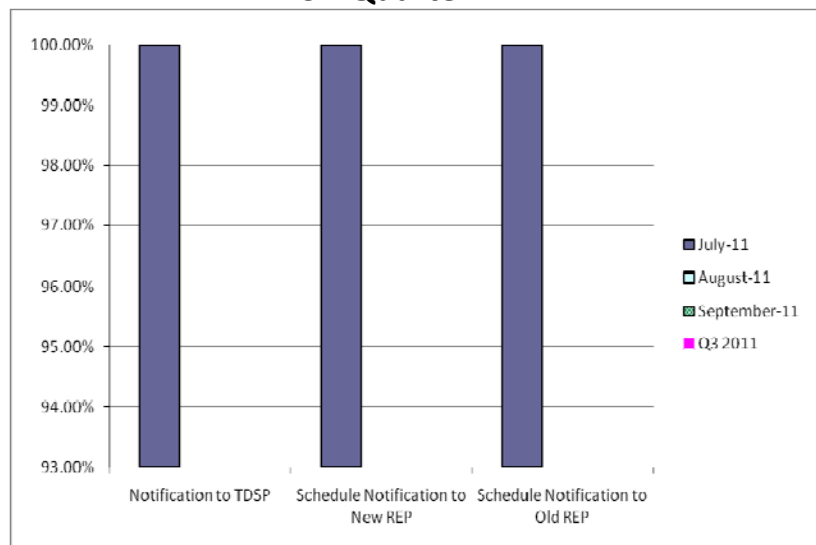
1st Quarter



2nd Quarter



3rd Quarter



4th Quarter

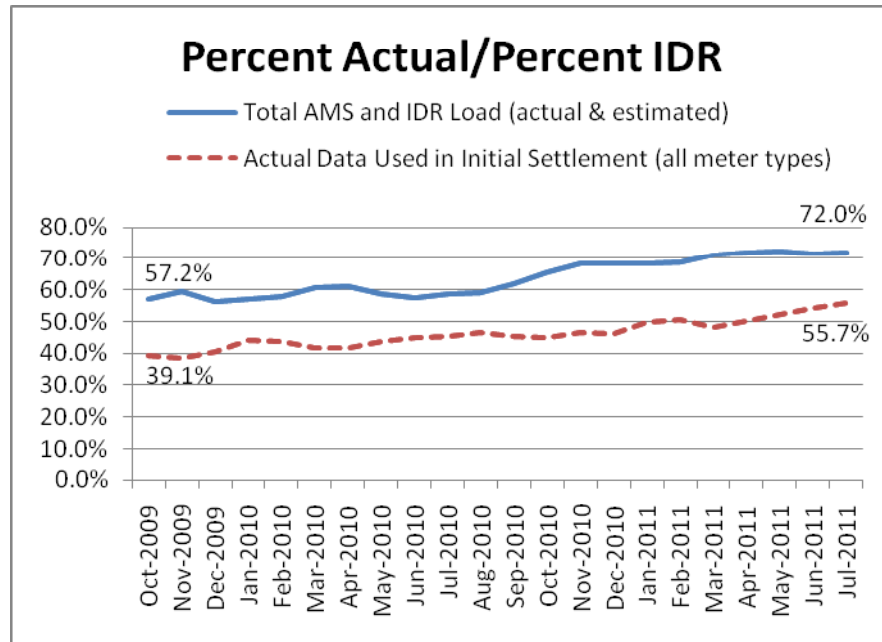


Migration from Native Affiliate REP

	% of Load ¹		% of ESI IDs	
	at <u>6/30/11</u>	at <u>6/30/10</u>	at <u>6/30/11</u>	at <u>6/30/10</u>
Residential	56%	52%	55%	51%
Small Non-Residential	82%	81%	62%	58%
Large Non-Residential	79%	78%	80%	78%

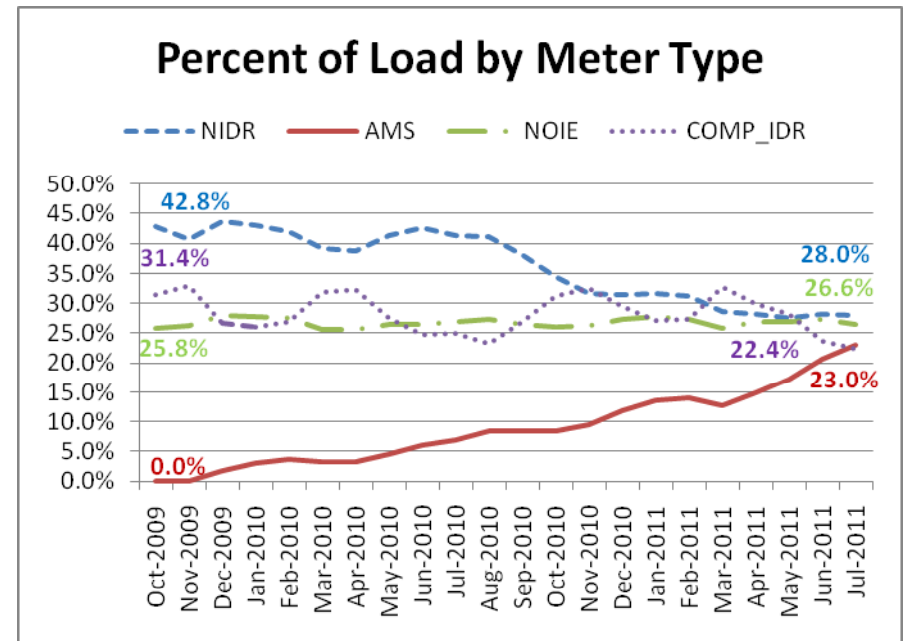
¹ - Percent of Deregulated (Non-NOIE) ESI IDs and Load. Usage based on monthly settlement results.

Advanced Meter Settlement Impacts

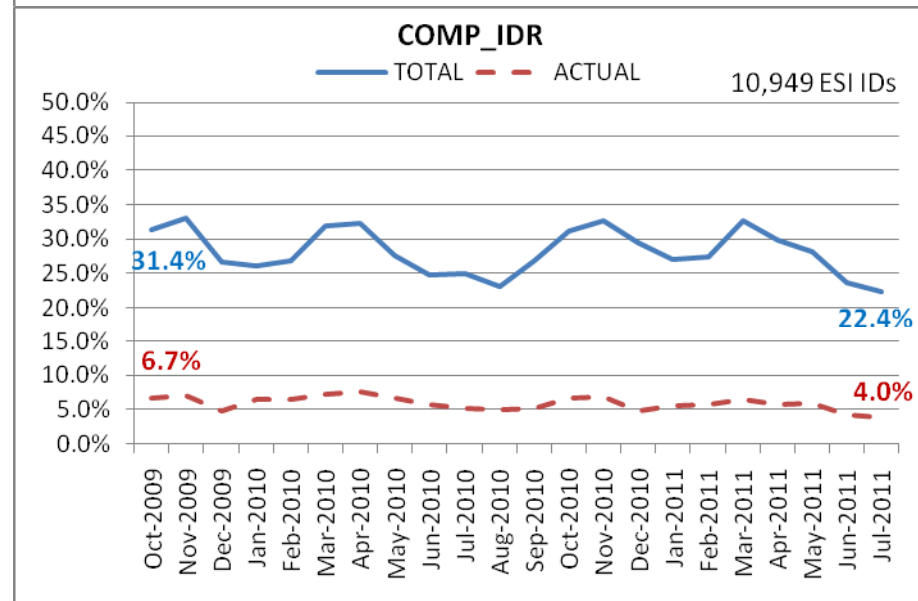
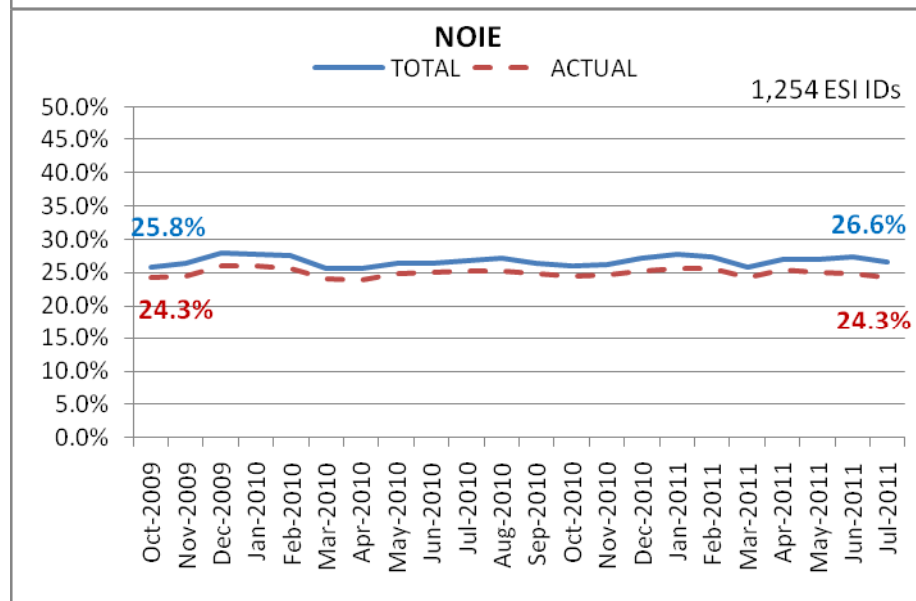
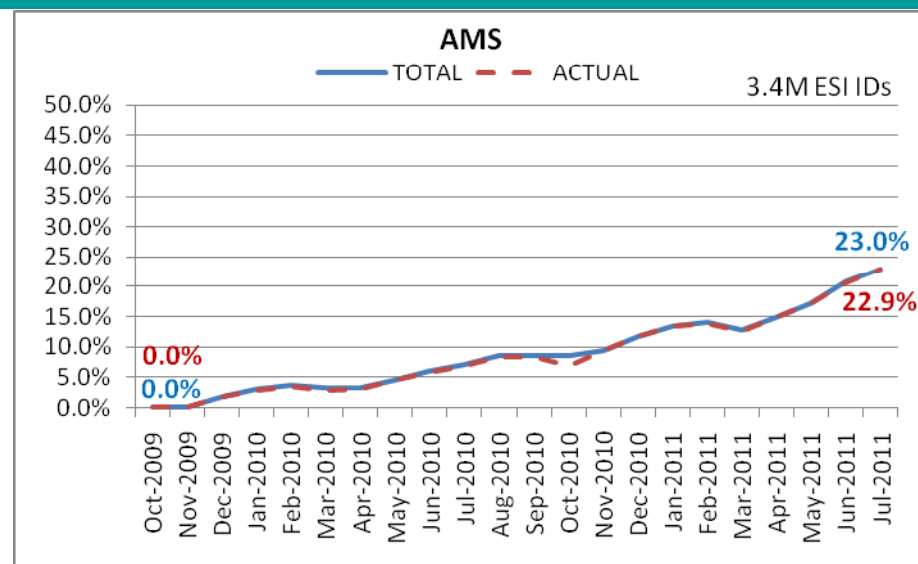
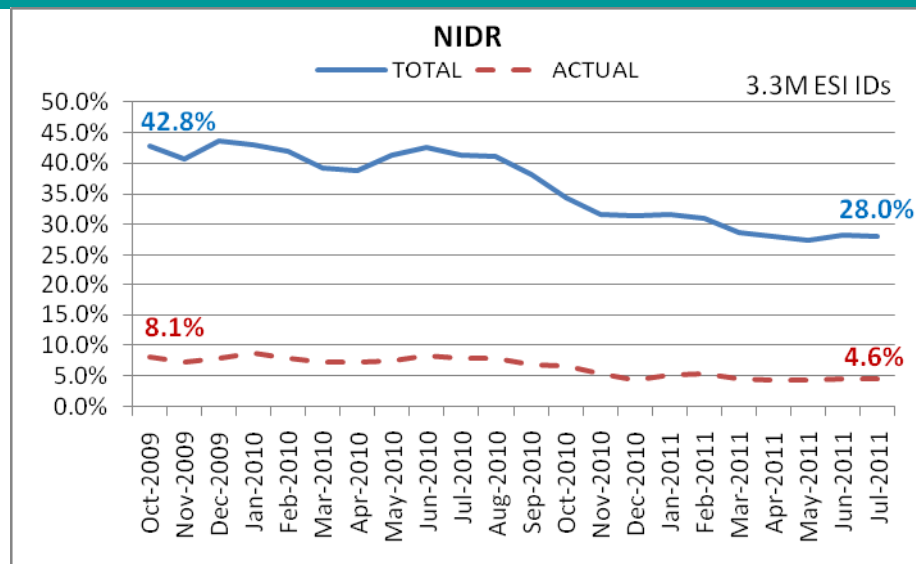


72% of the load in ERCOT is settled with 15-min interval data (AMS and IDR).

Settling 3.4M ESIIDs using Advanced Meter data. 0.2M increase from last month.



ERCOT Wide Load Volumes by Meter Type - INITIAL Settlement



Settlements and Billing Performance Measures – July 2011

July 2011 numbers will be provided prior to Board meeting

July 2011 Market Total Settlement Dollars

July 2011 numbers will be provided prior to Board meeting

Reliability Services

July 2011 numbers will be provided prior to Board meeting

Capacity Services - Cost

July 2011 numbers will be provided prior to Board meeting

Capacity Services - Volumes

July 2011 numbers will be provided prior to Board meeting

Energy Settlement

July 2011 numbers will be provided prior to Board meeting

Congestion Management

July 2011 numbers will be provided prior to Board meeting

Net Impact to Load

July 2011 numbers will be provided prior to Board meeting

Revenue Neutrality

July 2011 numbers will be provided prior to Board meeting

Daily DAM and RTM Activity

July 2011 numbers will be provided prior to Board meeting

Verifiable Costs

July 2011 numbers will be provided prior to Board meeting

ERCOT Wholesale Market Settlement Dispute Report

July 2011

	CRR Market		Day-Ahead Mkt		Real Time Mkt		Total	
	Current Month*	Since Dec 1, 2010	Current Month*	Since Dec 1, 2010	Current Month*	Since Dec 1, 2010	Current Month*	Since Dec 1, 2010
Received	0	17	2	68	19	298	21	383
Granted	0	1	0	1	25	120	25	122
Granted w/Exception	0	0	0	2	1	7	1	9
Denied	0	14**	2	55	11	119	13	188
In Process	0	2	0	11	0	59	0	n/a

*Some current month activity is on disputes that were received in prior months.

**Correction to prior month

REPs and QSEs Added/Terminated – as of July 31, 2011

- **Added REPs**

- ✓ N/A

- **Terminated REPs**

- ✓ N/A

- **QSE Level Changes**

- ✓ Kansas Energy LLC (QSE 1 to QSE 2)
- ✓ NRG Texas Dent (SQ3 to SQ4)

- **Added QSEs**

- ✓ Oceanside Power LLC (QSE – L1)
- ✓ Oklahoma Municipal Power Authority (QSE – L3)
- ✓ Oklahoma Municipal Power Authority (SQ1 – L1)
- ✓ Greenbelt Energy LLC (QSE – L1)
- ✓ Denver Energy LLC dba Denen LLC (QSE – L1)
- ✓ Velocity American Energy Master I LP (QSE – L1)
- ✓ Veteran Energy LLC (QSE – L2)

- **Terminated QSEs**

- ✓ N/A

QSE Count	Level	Qualification Description
89	1	<i>Performs Inter-QSE trades only; no direct representation of Load Serving Entity or Resource Entity</i>
131	2	<i>Represents Load Serving Entity ; no direct representation of Resource Entity</i>
65	3	<i>Represents Load Serving Entity and/or Resource Entity without providing Ancillary Services</i>
53	4	<i>Represents Load Serving Entity and/or Resource Entity and provides Ancillary Services</i>
338 total (includes Sub-QSEs)		

Questions?