



Commercial Market Operations Report

Dale Goodman

Board of Directors Meeting
July 19, 2011

Summary

Retail Activity

- **Overall Activity** – Continue to see increased switching activity compared to last year. There was no Mass Transition activity in June.
- **Transaction Performance Measures** – All measures exceeded the performance goals for June.
- **Advanced Metering** – Currently settling 3.2M Advanced Meters. We continue to settle more than 70% of the load in ERCOT with 15-min data (AMS and IDR). AMS Load Volume went from 17.3% in May to 20.7% in June.

Wholesale Activity (June settlement information will be provided prior to Board meeting)

- **Settlements & Billing Performance** –
- **Settlement Dollars** –
- **Reliability Services** –
- **Capacity Services** –
- **Congestion Management** –
- **Revenue Neutrality** –
- **Verifiable Costs** –
- **Disputes** – The volume of disputes continues to be low. A total of 362 disputes have been filed since Nodal go-live of December 1, 2010. To compare, from December 2009 through June 2010 in the Zonal system, we received 595 disputes.
- **REPs and QSEs Added/Terminated**
 - 0 new REPs
 - 2 terminated REP
 - 7 new QSEs
 - 1 terminated QSEs
 - Please note four of the seven added QSEs are Level 3 QSEs, however they are representative of a legal entity change and not new participants in the market.

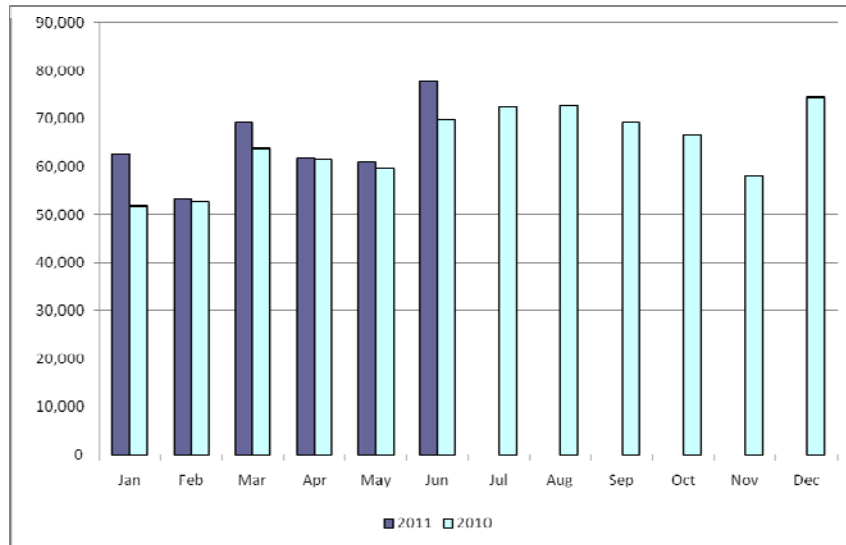
Overall Activity

Retail Transactions Summary

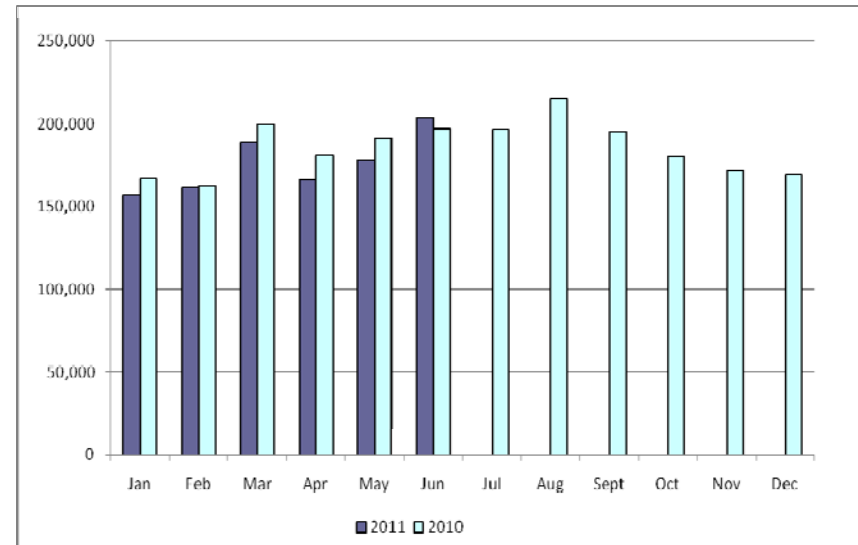
Transaction Type	YTD		June	
	<u>06/30/2011</u>	<u>06/30/2010</u>	<u>2011</u>	<u>2010</u>
Switches	385,533	359,306	77,780	69,871
Move - Ins	1,055,980	1,099,573	204,247	196,968
Move Out	543,333	606,917	107,084	113,207
CSA (Continuous Service Agreement)	167,106	216,573	35,194	39,655
Mass Transition	22,056	0	0	0
Total	2,174,008	2,282,369	424,305	419,701
Since June 1, 2001	42,555,600			

Retail Transactions Summary

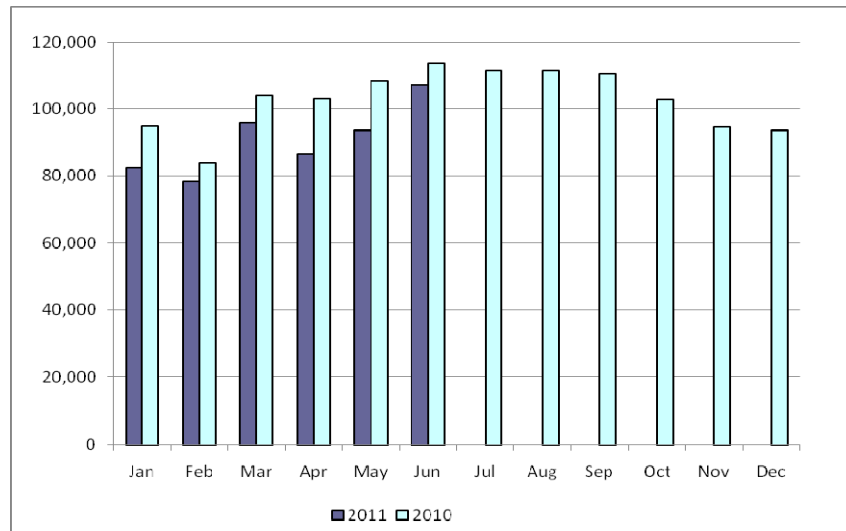
Switches



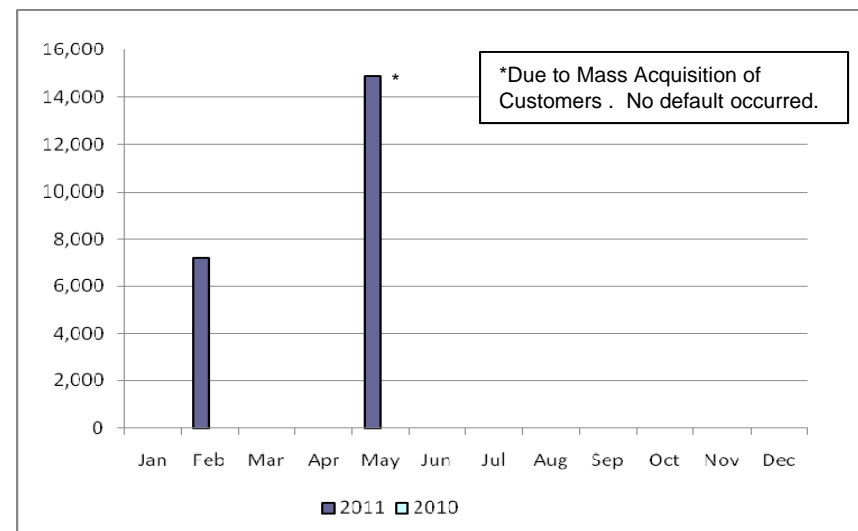
Move-Ins



Move-Outs

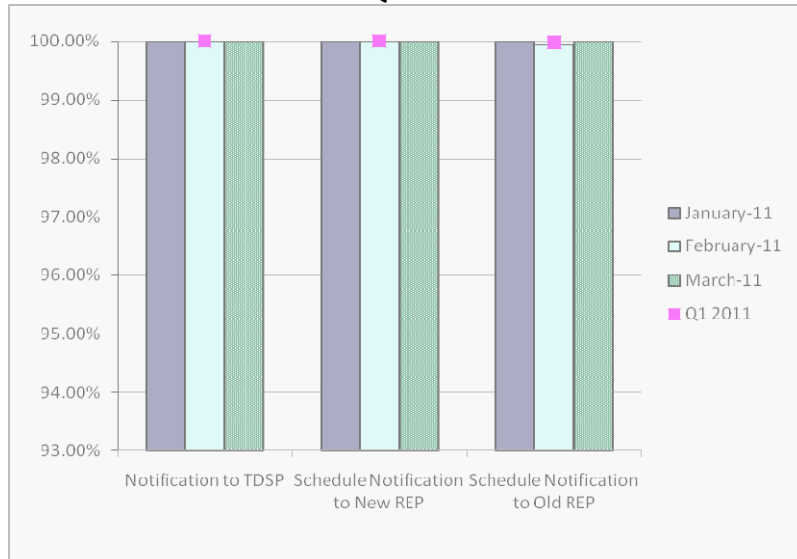


Mass Transition

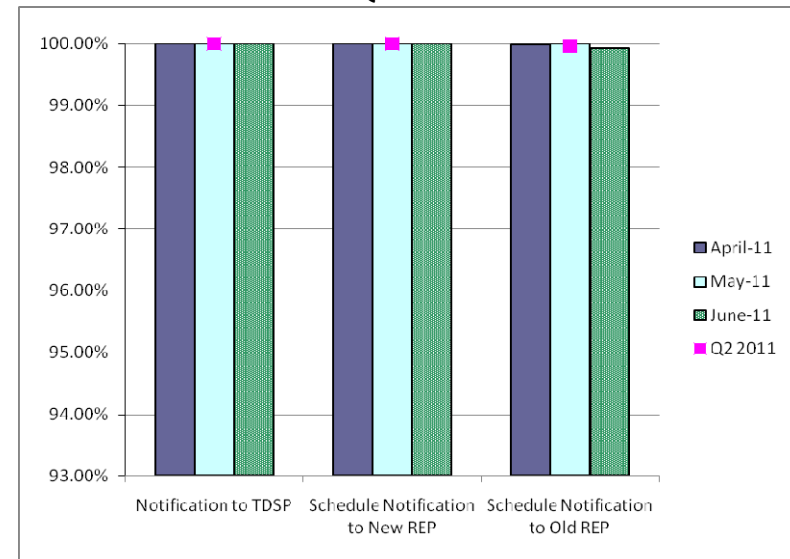


Retail Performance Measures – 2011 Switch

1st Quarter



2nd Quarter



3rd Quarter

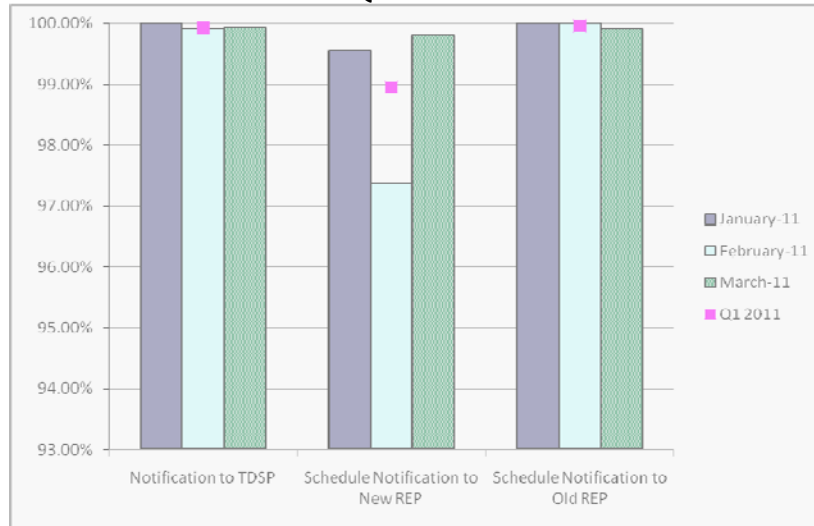


4th Quarter

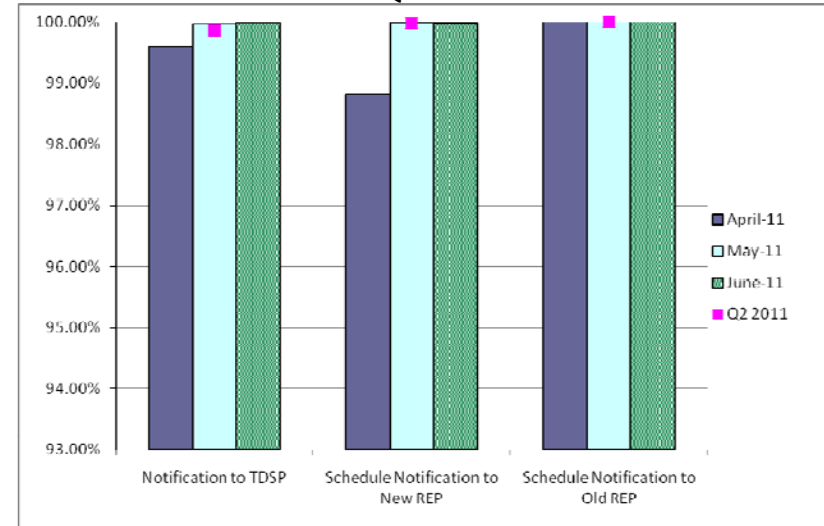


Retail Performance Measures – 2011 Move-In/Priority

1st Quarter



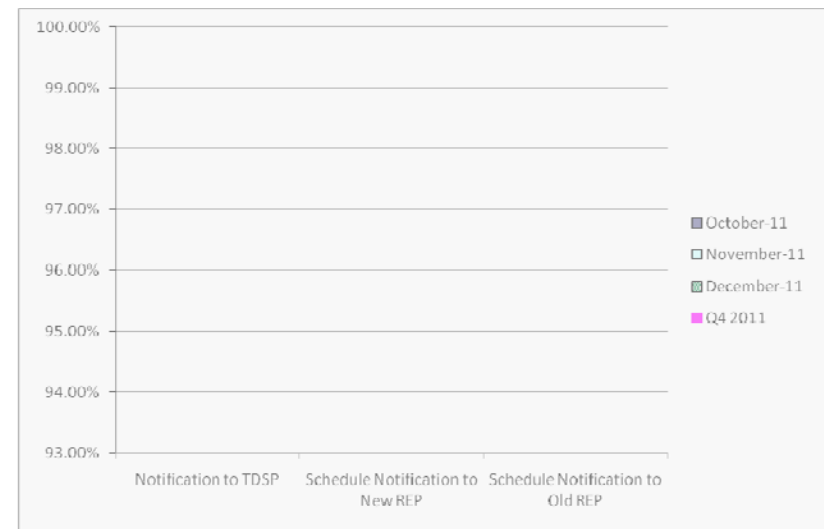
2nd Quarter



3rd Quarter



4th Quarter

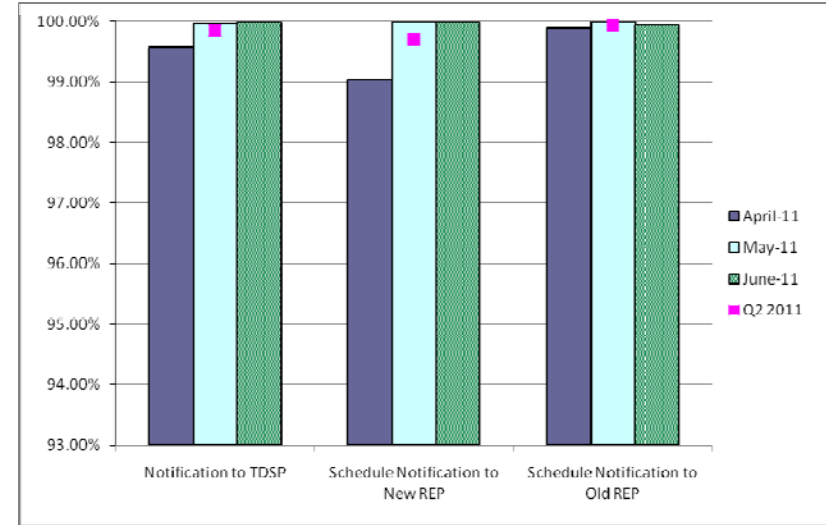


Retail Performance Measures – 2011 Move-In/Standard

1st Quarter



2nd Quarter



3rd Quarter



4th Quarter

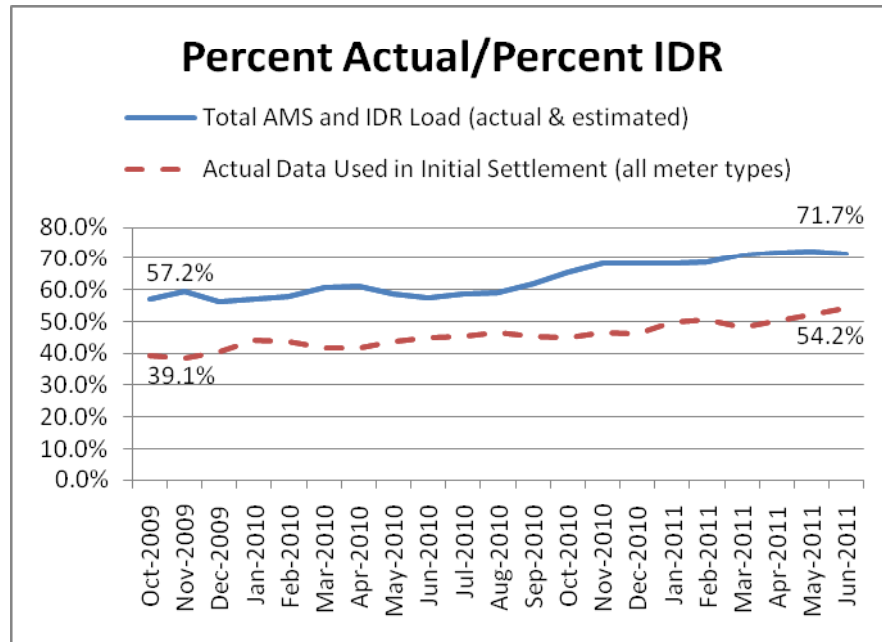


Migration from Native Affiliate REP

	% of Load ¹		% of ESI IDs	
	at <u>5/31/11</u>	at <u>5/31/10</u>	at <u>5/31/11</u>	at <u>5/31/10</u>
Residential	57%	52%	55%	51%
Small Non-Residential	82%	81%	61%	57%
Large Non-Residential	79%	78%	80%	78%

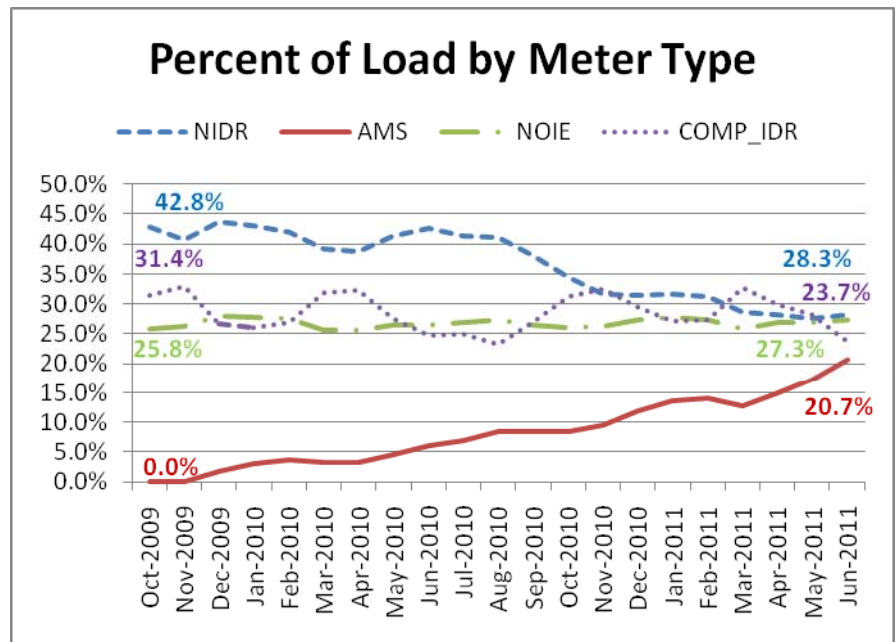
¹ - Percent of Deregulated (Non-NOIE) ESI IDs and Load. Usage based on monthly settlement results.

Advanced Meter Settlement Impacts

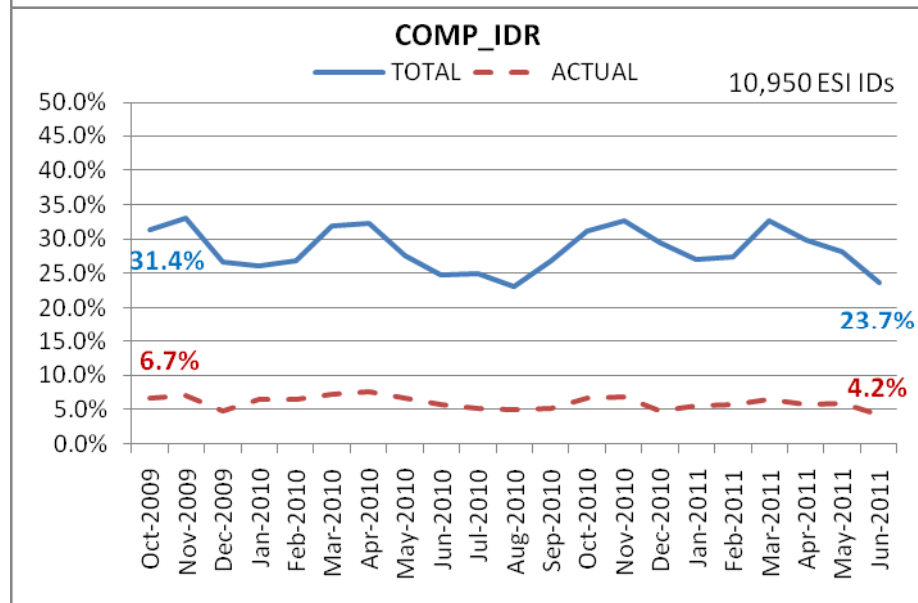
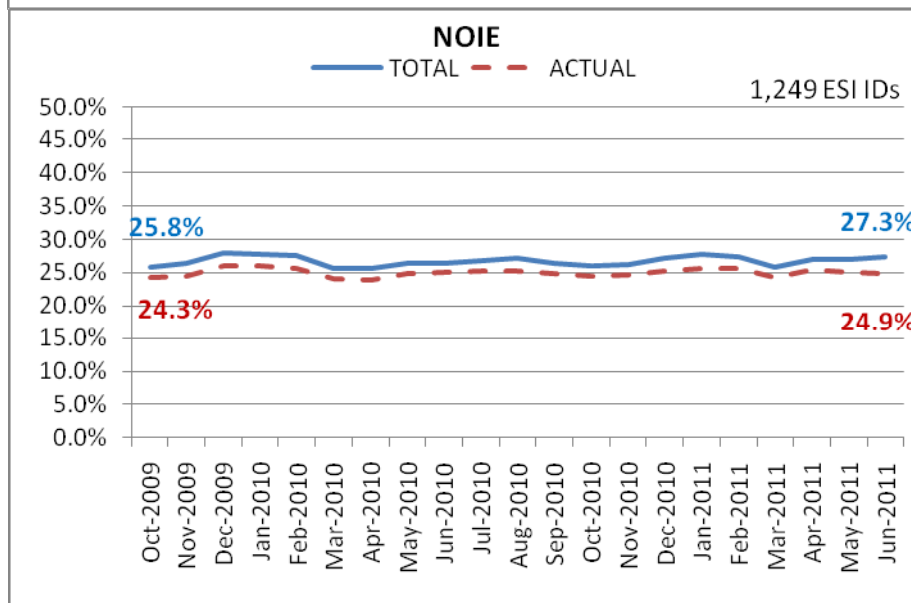
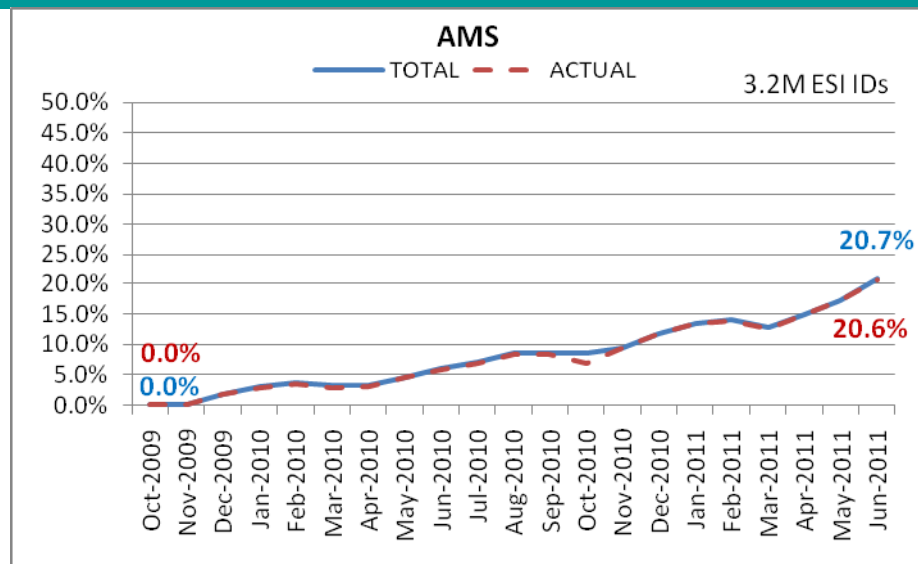
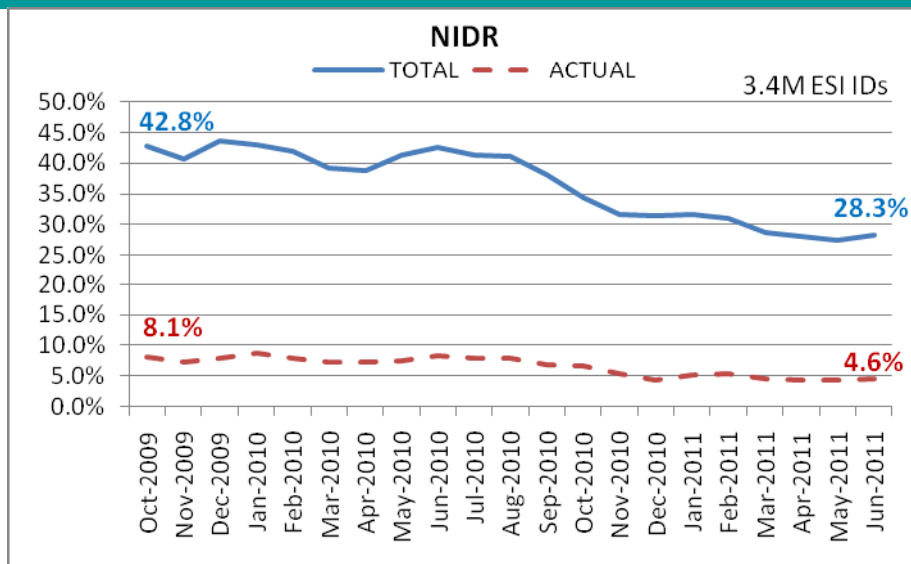


More than 70% of the load in ERCOT is settled with 15-min interval data (AMS and IDR).

Settling 3.2M ESIIDs using Advanced Meter data.



ERCOT Wide Load Volumes by Meter Type - INITIAL Settlement



Settlements and Billing Performance Measures – June 2011

June 2011 numbers will be provided prior to Board meeting

June 2011 Market Total Settlement Dollars

June 2011 numbers will be provided prior to Board meeting

Reliability Services

June 2011 numbers will be provided prior to Board meeting

Capacity Services – Cost

June 2011 numbers will be provided prior to Board meeting

Capacity Services – Volumes

June 2011 numbers will be provided prior to Board meeting

Energy Settlement

June 2011 numbers will be provided prior to Board meeting

Congestion Management

June 2011 numbers will be provided prior to Board meeting

Net Impact to Load

June 2011 numbers will be provided prior to Board meeting

Revenue Neutrality

June 2011 numbers will be provided prior to Board meeting

Daily DAM and RTM Activity

June 2011 numbers will be provided prior to Board meeting

Verifiable Costs

June 2011 numbers will be provided prior to Board meeting

ERCOT Wholesale Market Settlement Dispute Report

June 2011

	CRR Market		Day-Ahead Mkt		Real Time Mkt	
	Current Month*	Since Dec 1, 2010	Current Month*	Since Dec 1, 2010	Current Month*	Since Dec 1, 2010
Received	0	17	1	66	18	279
Granted	0	1	0	1	17	95
Granted w/Exception	0	0	0	2	0	6
Denied	0	15	6	53	4	108
In Process	0	1	0	10	0	70

*Some current month activity is on disputes that were received in prior months.

REPs and QSEs Added/Terminated – as of June 30, 2011

- **Added REPs**

- ✓ N/A

- **Terminated REPs**

- ✓ Infinite Energy Inc. (LSE)
- ✓ TEXREP5 LLC dba Allstar Energy LLC (LSE)

- **Added QSEs**

- ✓ NRG Texas Dent (SQ3 – L3)
- ✓ Turkey Track Wind Energy LLC (QSE – L3)
- ✓ McAdoo Wind Energy LLC (QSE – L3)
- ✓ Stanton Wind Energy LLC (QSE – L3)
- ✓ Scurry County Wind II LLC (QSE – L3)
- ✓ Hunt Electric Power Marketing LLC (QSE – L1)
- ✓ Great Bay Energy II LLC (QSE – L1)

- **Terminated QSEs**

- ✓ TEXREP5 LLC dba Allstar Energy LLC (QSE – L2)

QSE Count	Level	Qualification Description
85	1	<i>Performs Inter-QSE trades only; no direct representation of Load Serving Entity or Resource Entity</i>
129	2	<i>Represents Load Serving Entity ; no direct representation of Resource Entity</i>
65	3	<i>Represents Load Serving Entity and/or Resource Entity without providing Ancillary Services</i>
52	4	<i>Represents Load Serving Entity and/or Resource Entity and provides Ancillary Services</i>
331 total (includes Sub-QSEs)		

Questions?