



Commercial Market Operations Report

Betty Day

ERCOT Board of Directors

June 21, 2011

Summary

Retail Activity

- **Overall Activity** – Continued strong switching activity. The Mass Transition noted in May was result of a Mass Acquisition (the sale of one REP's customers to another REP). No default occurred.
- **Transaction Performance Measures** – All measures were above the 98% target for May.
- **Advanced Metering** – Passed the 3M mark in settling Advanced Meters. More than 70% of the load in ERCOT is being settled with 15-min data (AMS and IDR).

Wholesale Activity (May settlement information will be provided prior to Board meeting)

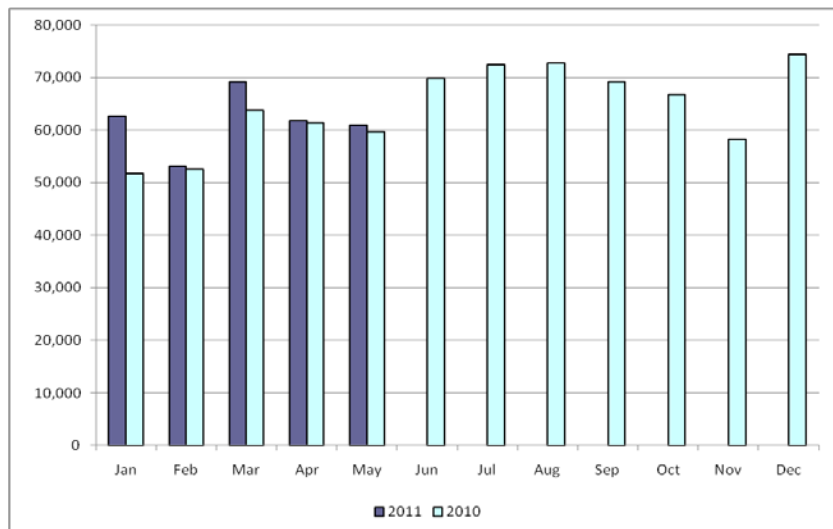
- **Settlements & Billing Performance** –
- **Settlement Dollars** –
- **Reliability Services** –
- **Capacity Services** –
- **Congestion Management** –
- **Revenue Neutrality** –
- **Verifiable Costs** –
- **Market Extracts and Reports** – Over 1.1M reports and extracts were posted during May and over 23.5M downloads occurred.
- **Disputes** – A total of 343 disputes have been filed since Nodal go-live. The volume of disputes continues to be low.
- **REPs and QSEs Added/Terminated**
 - 0 new REPs
 - 0 terminated REP
 - 3 new QSEs
 - 2 terminated QSEs

Retail Transactions Summary

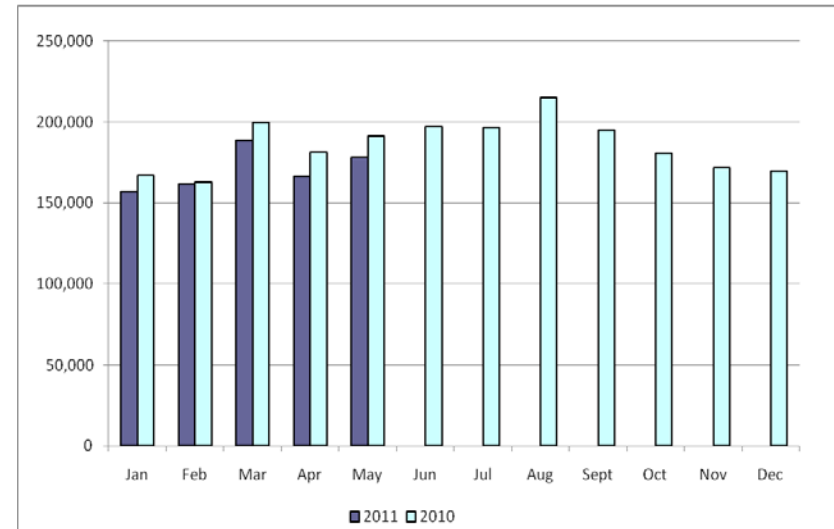
Transaction Type	YTD		May	
	<u>05/31/2011</u>	<u>05/31/2010</u>	<u>2011</u>	<u>2010</u>
Switches	307,753	289,435	60,910	59,680
Move - Ins	851,733	902,605	177,993	191,475
Move Out	436,249	493,710	93,555	108,148
CSA (Continuous Service Agreement)	131,912	176,918	26,666	38,457
Mass Transition	22,056	0	14,869	0
Total	1,749,703	1,862,668	373,993	397,760
Since June 1, 2001	42,131,295			

Retail Transactions Summary

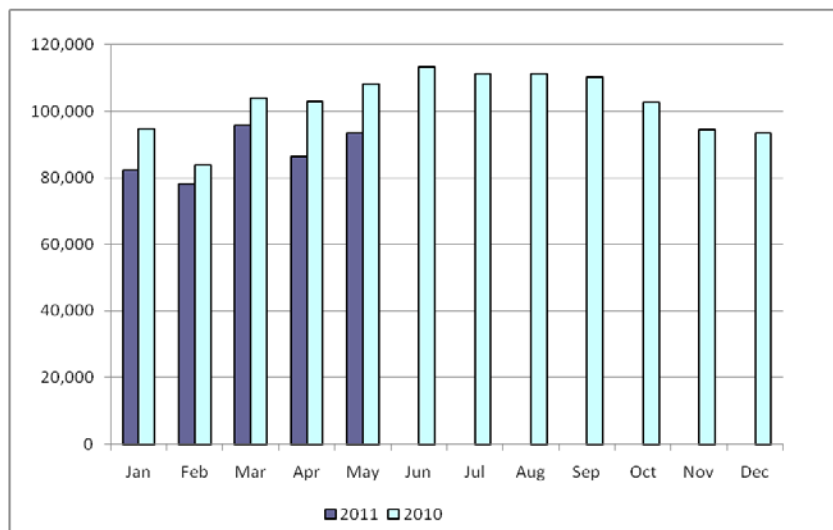
Switches



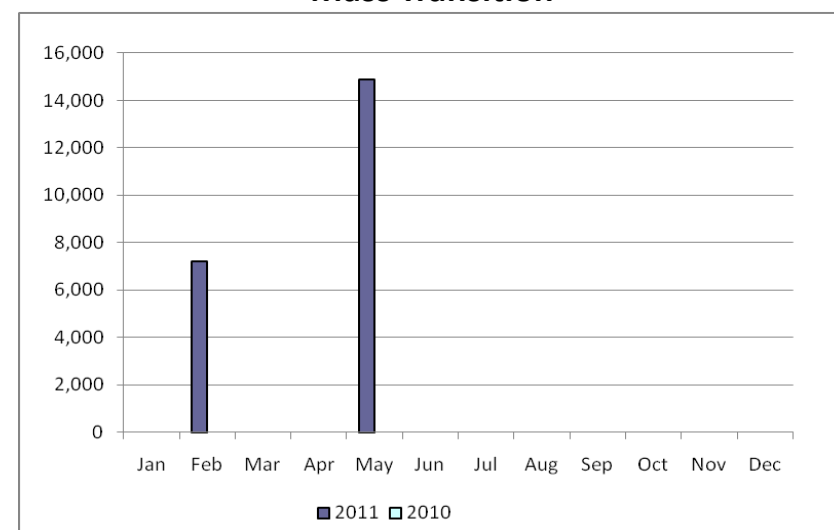
Move-Ins



Move-Outs

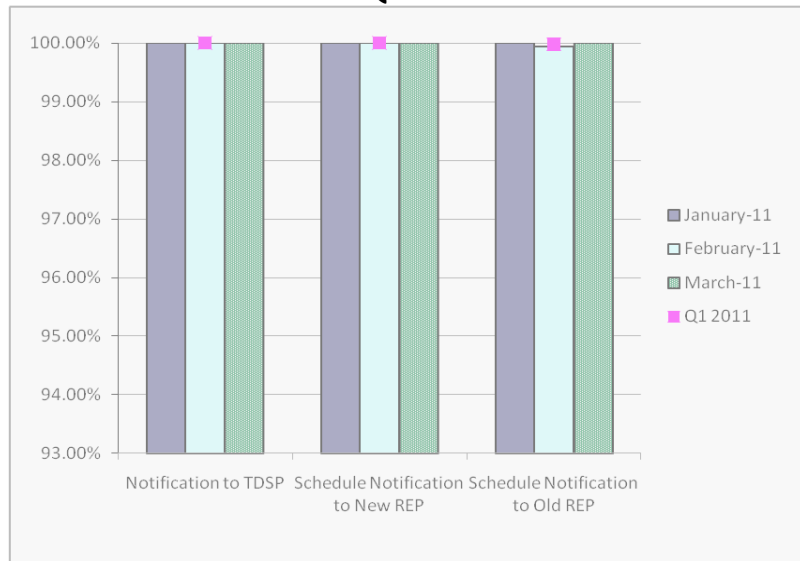


Mass Transition

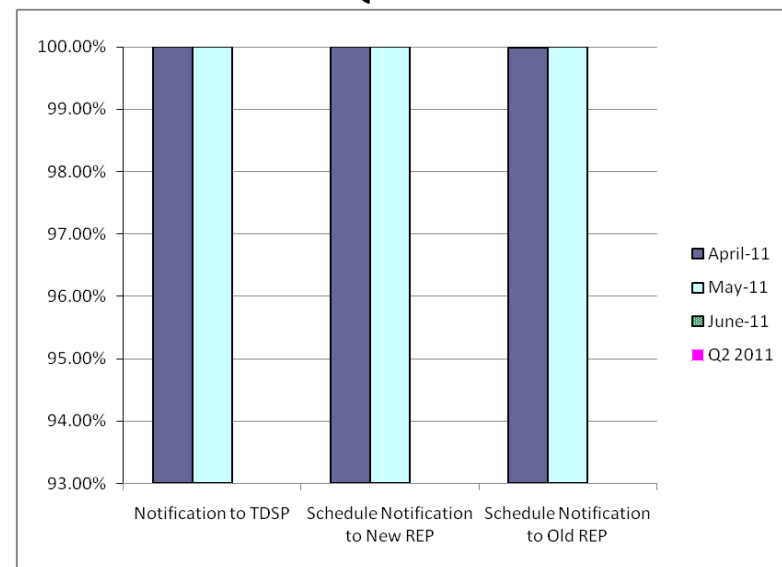


Retail Performance Measures – 2011 Switch

1st Quarter



2nd Quarter



3rd Quarter

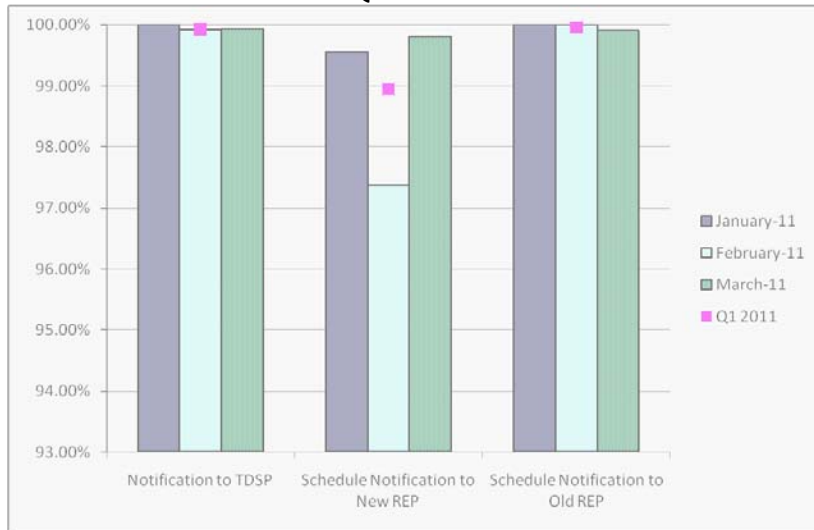


4th Quarter

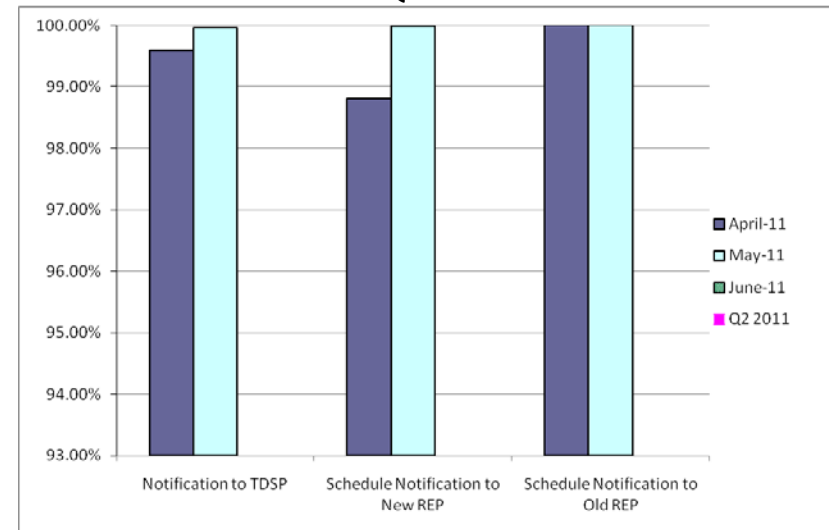


Retail Performance Measures – 2011 Move-In / Priority

1st Quarter



2nd Quarter



3rd Quarter

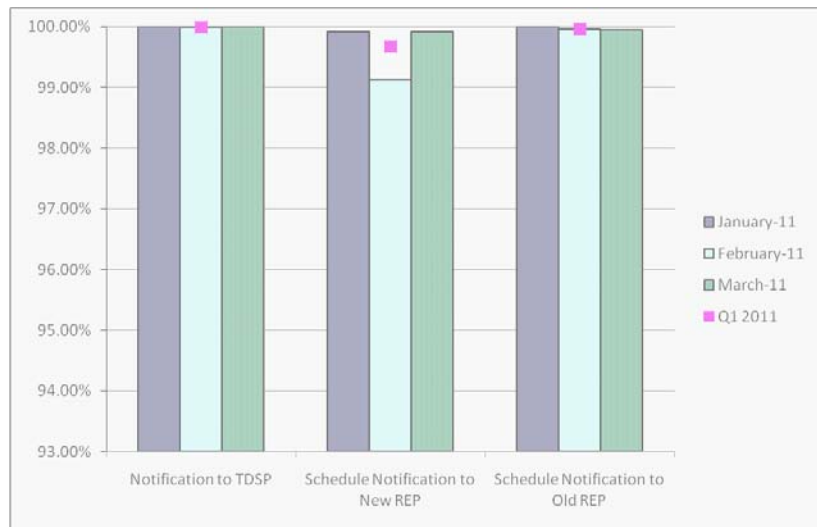


4th Quarter

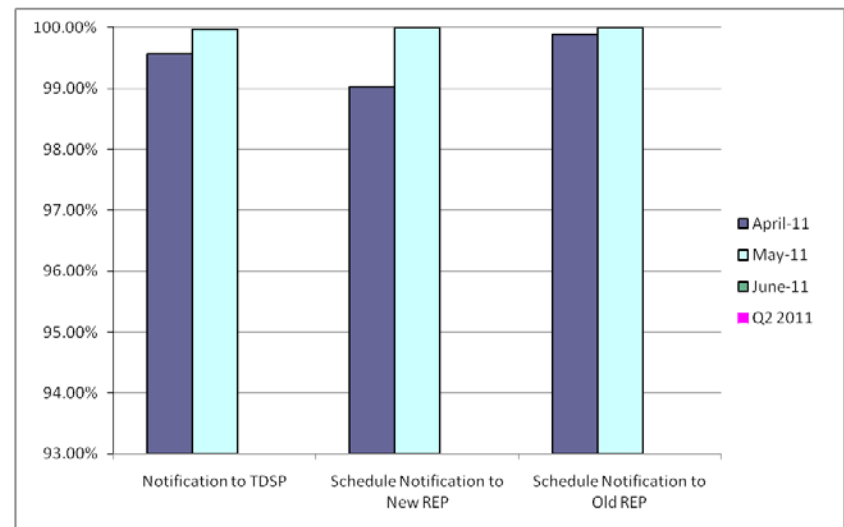


Retail Performance Measures – 2011 Move-In / Standard

1st Quarter



2nd Quarter



3rd Quarter



4th Quarter

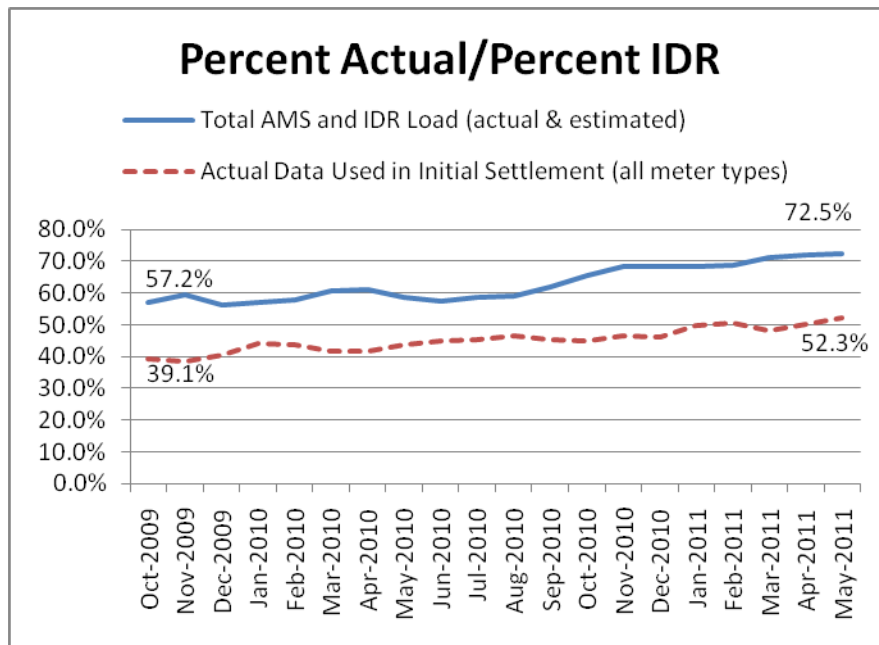


Migration from Native Affiliate REP

	% of Load ¹		% of ESI IDs	
	at <u>4/30/11</u>	at <u>4/30/10</u>	at <u>4/30/11</u>	at <u>4/30/10</u>
Residential	57%	52%	54%	50%
Small Non-Residential	82%	81%	61%	57%
Large Non-Residential	79%	78%	80%	78%

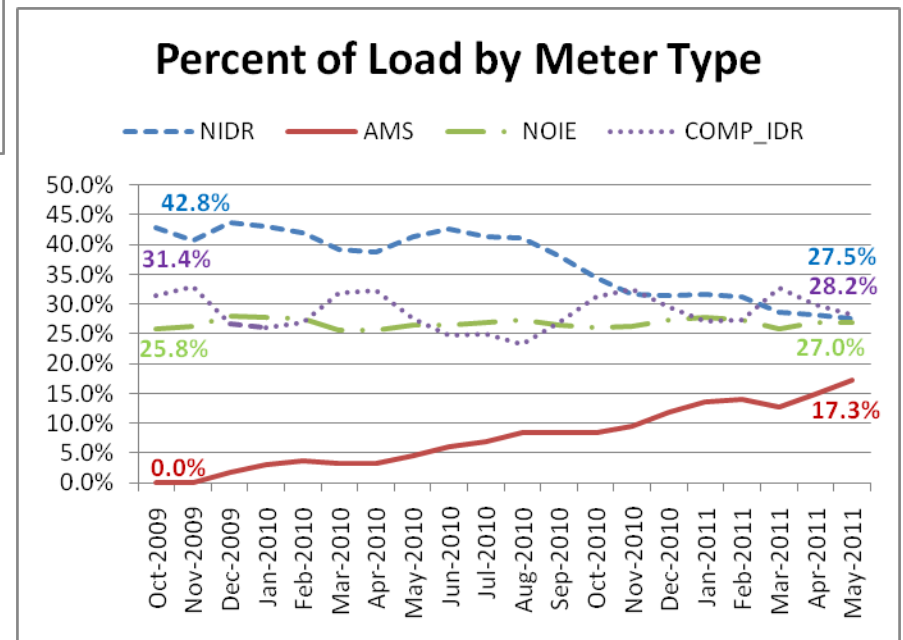
¹ - Percent of Deregulated (Non-NOIE) ESI IDs and Load. Usage based on monthly settlement results.

Advanced Meter Settlement Impacts

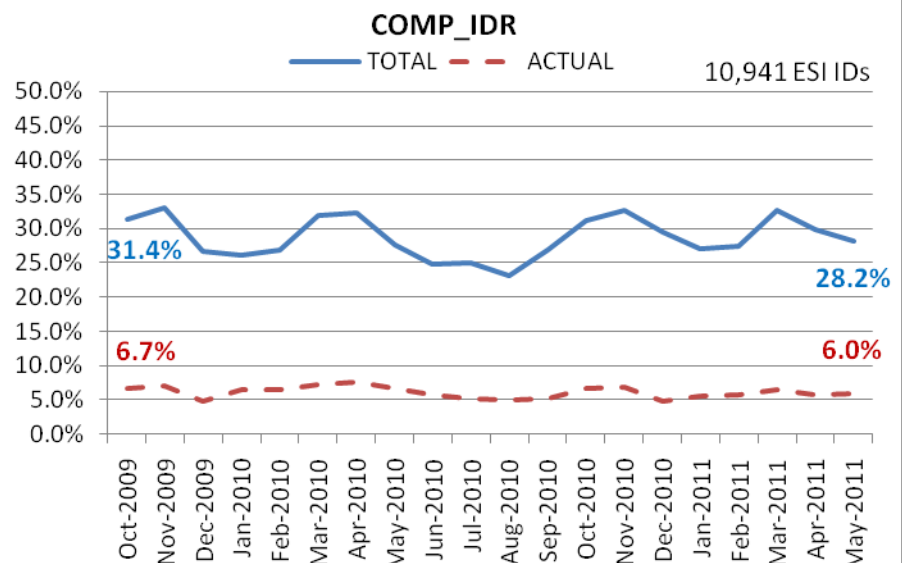
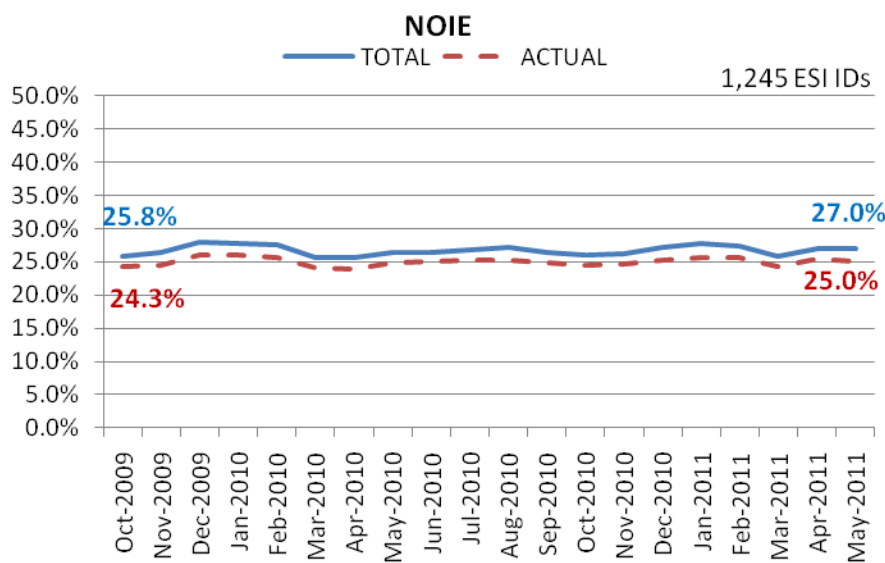
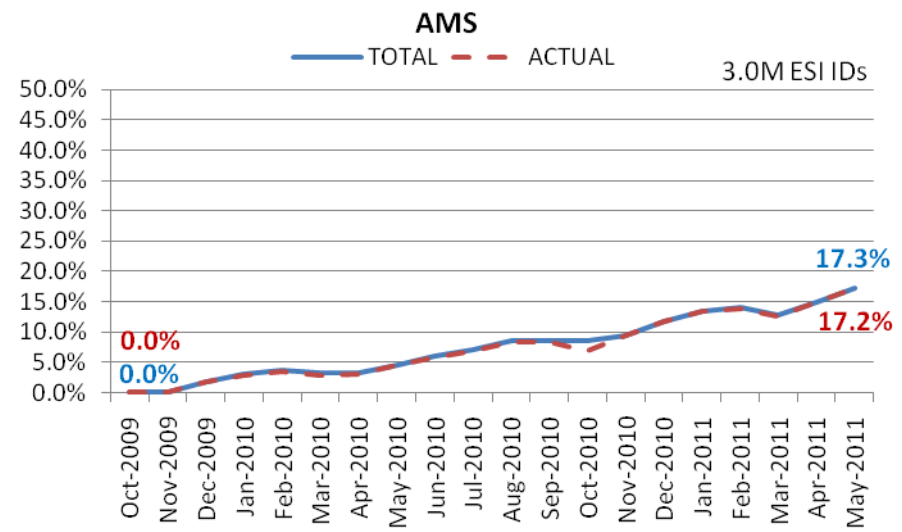
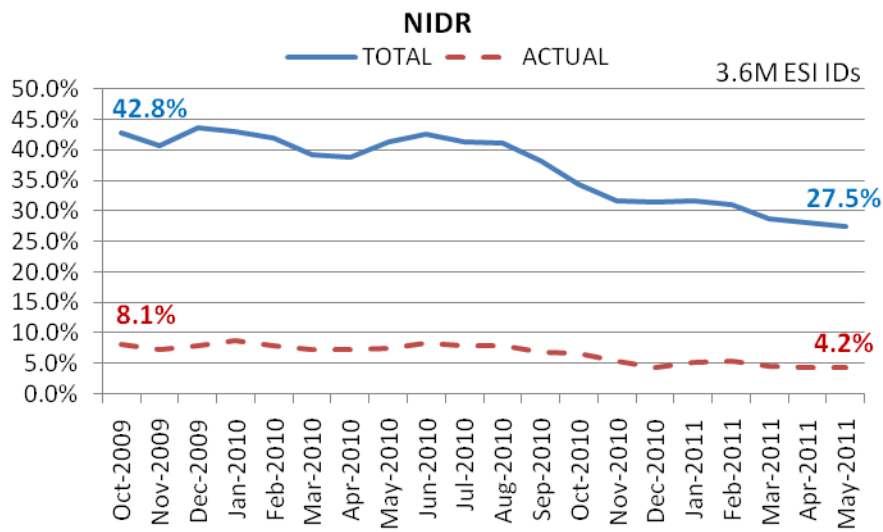


- *Now settling more than 3M ESI IDs using Advanced Meter data!*
- *More than 99% of actual reads from AMS are available for initial settlement.*

More than 70% of the load in ERCOT is settled with 15-min interval data (AMS and IDR).



ERCOT Wide Load Volumes by Meter Type - INITIAL Settlement



May 2011 numbers will be provided prior to Board meeting

May 2011 Market Total Settlement Dollars

May 2011 numbers will be provided prior to Board meeting

May 2011 numbers will be provided prior to Board meeting

May 2011 numbers will be provided prior to Board meeting

May 2011 numbers will be provided prior to Board meeting

May 2011 numbers will be provided prior to Board meeting

May 2011 numbers will be provided prior to Board meeting

May 2011 numbers will be provided prior to Board meeting

May 2011 numbers will be provided prior to Board meeting

May 2011 numbers will be provided prior to Board meeting

May 2011 numbers will be provided prior to Board meeting

May 2011 numbers will be provided prior to Board meeting

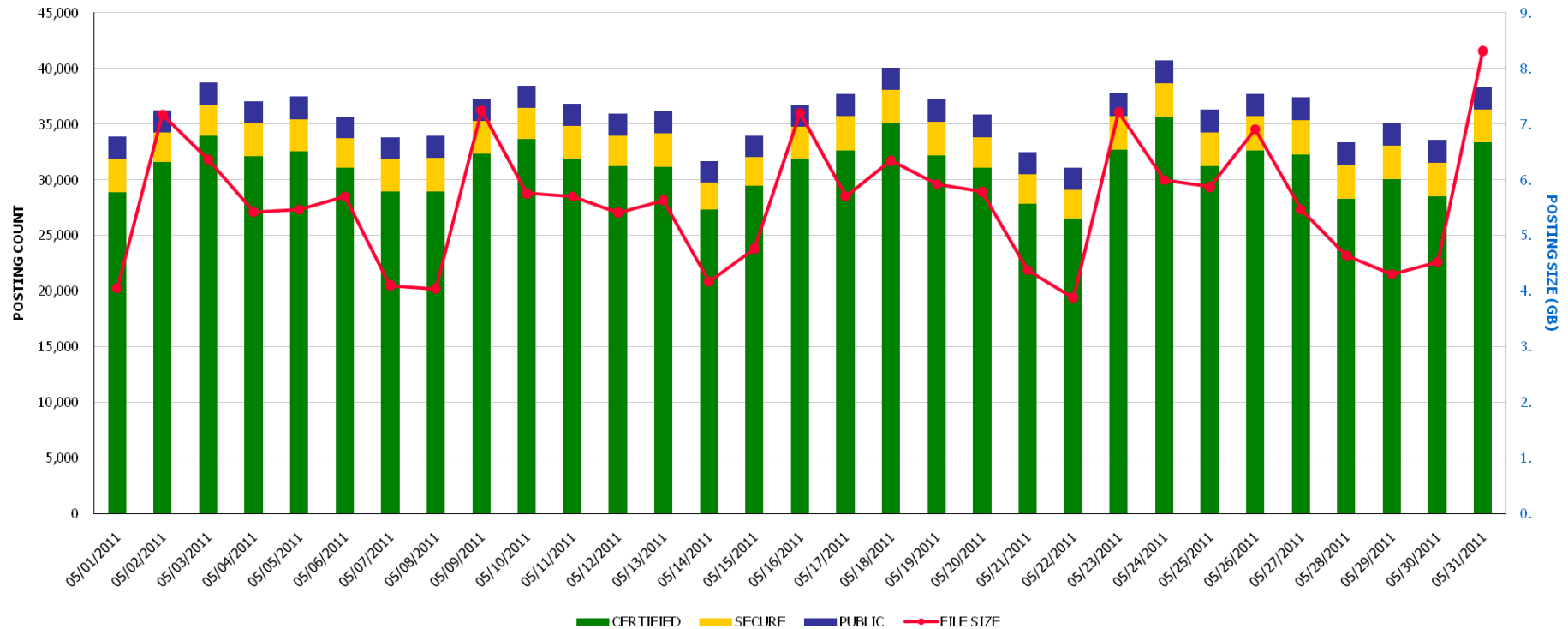
Extract & Report Postings

Market Extract & Report Postings

Run on Jun 7, 2011 2:01:39 PM

Start Date: May 1, 2011

End Date: May 31, 2011



TOTAL POSTINGS	TOTAL FILE SIZE (GB)
1,117,955	173.35

Posting Classifications:

Certified = Available only to the Market Participant owning that data

Secure = Available to any Market Participant with a digital certificate

Public = Available to all Market Participants & general public (via ERCOT.com)



June 21, 2011

Extract & Report Postings

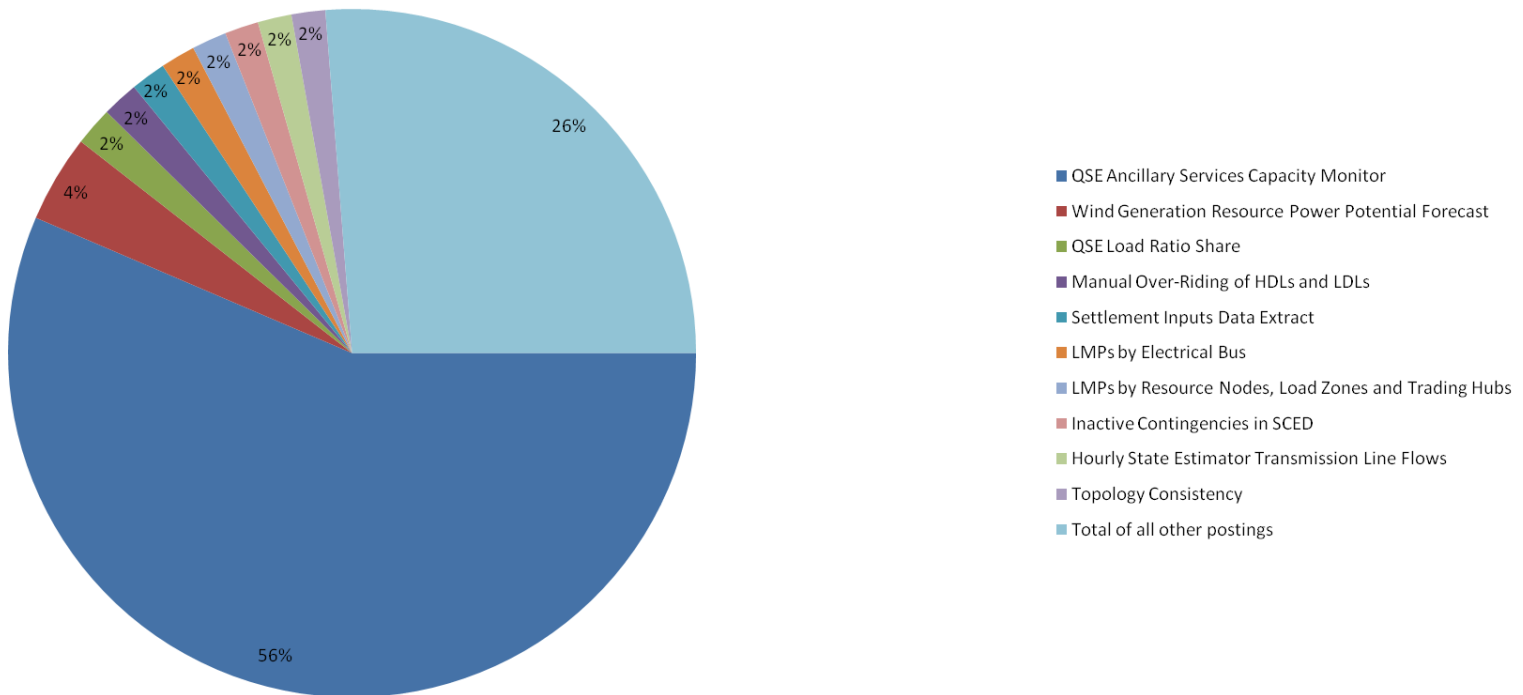
Top 10 Market Extract & Report Postings

Run on Jun 7, 2011 2:02:39 PM

Start Date: May 1, 2011

End Date: May 31, 2011

PUBLISH COUNT



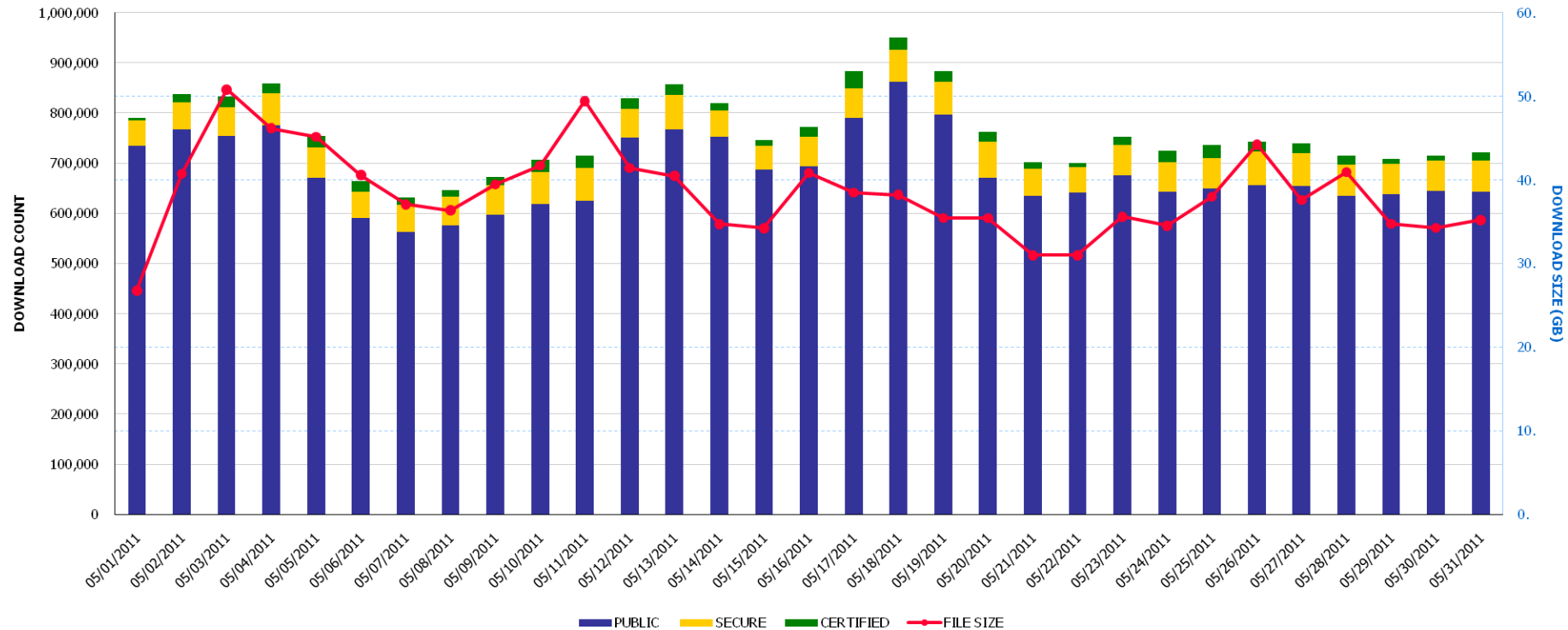
Extract & Report Downloads

Market Extract & Report Downloads

Run on Jun 7, 2011 2:01:06 PM

Start Date: May 1, 2011

End Date: May 31, 2011



TOTAL DOWNLOADS	TOTAL FILE SIZE (GB)
23,567,580	1,190.27

Posting Classifications:

Certified = Available only to the Market Participant owning that data

Secure = Available to any Market Participant with a digital certificate

Public = Available to all Market Participants & general public (via ERCOT.com)



June 21, 2011

Extract & Report Downloads

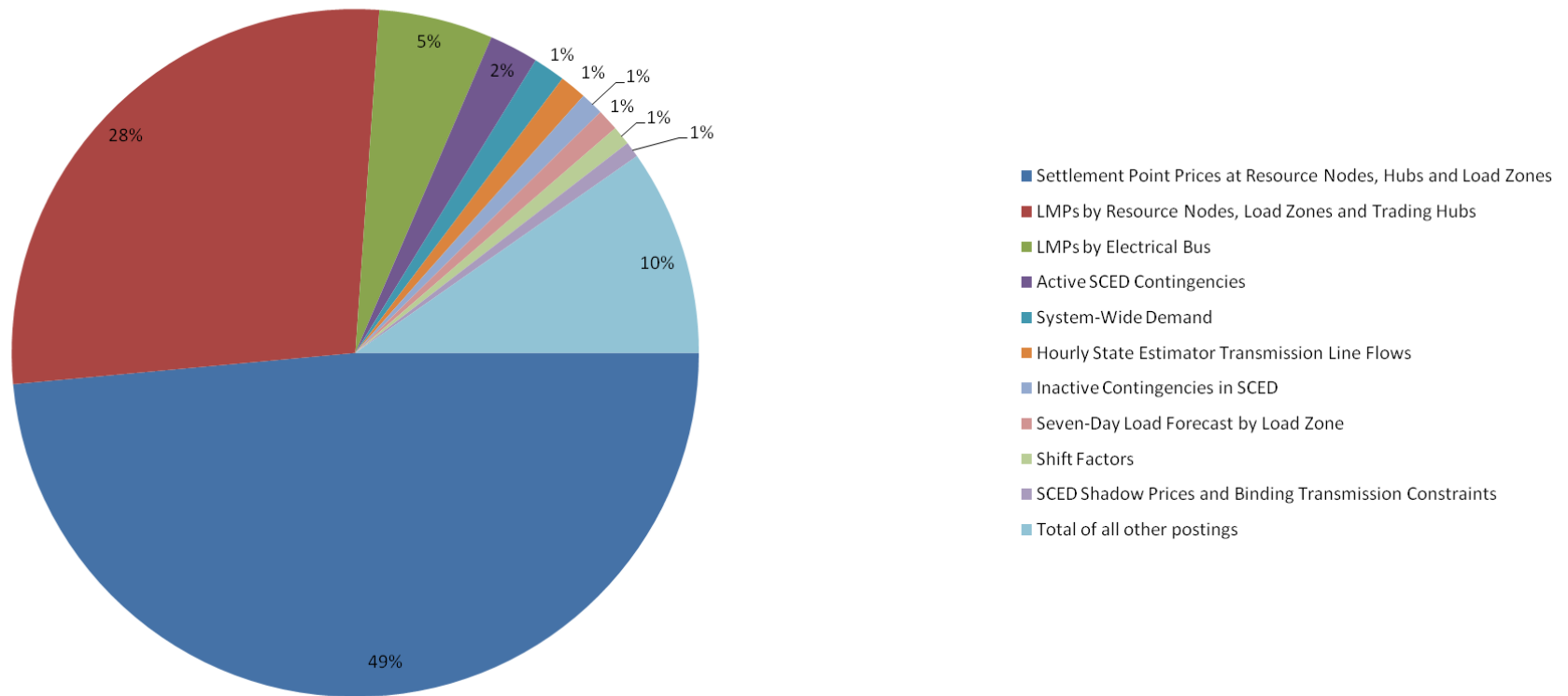
Top 10 Market Extract & Report Downloads

Run on Jun 7, 2011 2:02:13 PM

Start Date: May 1, 2011

End Date: May 31, 2011

DOWNLOAD COUNT



ERCOT Wholesale Market Settlement Dispute Report

May 2011

	CRR Market		Day-Ahead Mkt		Real Time Mkt	
	Current Month*	Since Dec 1, 2010	Current Month*	Since Dec 1, 2010	Current Month*	Since Dec 1, 2010
Received	0	17	9	65	19	261
Granted	0	1	1	1	20	68
Granted w/Exception	0	0	2	2	4	10
Denied	1	15	3	47	30	104
In Process	0	1	0	15	0	79

*Some current month activity is on disputes that were received in prior months.

REPs and QSEs Added/Terminated – as of May 31, 2011

- **Added REPs**

- ✓ N/A

- **Terminated REPs**

- ✓ N/A

- **Added QSEs**

- ✓ Dynasty Power Inc (QSE – L1)
- ✓ Dyon LLC (QSE – L1)
- ✓ North Maple Energy LLC (QSE – 1)

- **Terminated QSEs**

- ✓ Jump Power LLC (QSE – L1)
- ✓ SESCO Enterprises LLC (QSE)

QSE Count	Level	Qualification Description
83	1	<i>Performs Inter-QSE trades only; no direct representation of Load Serving Entity or Resource Entity</i>
129	2	<i>Represents Load Serving Entity ; no direct representation of Resource Entity</i>
61	3	<i>Represents Load Serving Entity and/or Resource Entity without providing Ancillary Services</i>
52	4	<i>Represents Load Serving Entity and/or Resource Entity and provides Ancillary Services</i>
325 total (includes Sub-QSEs)		

Questions?