



Commercial Market Operations  
Report  
Updated as of May 12, 2011

**Betty Day**

**ERCOT Board of Directors**  
**May 17, 2011**

# Summary

---

## Retail Activity

- **Overall Activity** – Switch activity is comparable to the same period last year. Move-In/Move-Out transactions are lower.
- **Transaction Performance Measures** – First Quarter 2011 measures were above the 98% target. April 2011 was also above 98%.
- **Advanced Metering** – Now settling nearly 2.75M ESIDs using 15-minute Advanced Metering data.

## Wholesale Activity

- **Settlements & Billing Performance** – Perfect performance in April.
- **Settlement Dollars** – Daily settlement dollars averaged \$8.45M in April compared to \$6.4M in March.
- **Reliability Services** – April had more hours of RUC commitments which led to increased costs for RUC make-whole payments.
- **Capacity Services** – Overall paid less in April than March for Ancillary Services but there were increased costs in Non-Spin during April.
- **Congestion Management** – CRRs were fully funded for April.
- **Revenue Neutrality** – Load received a revenue neutrality credit of \$2.37M compared to a charge of \$1.13M last month.
- **Verifiable Costs** – Six new verifiable cost approvals during April.
- **Market Extracts and Reports** – Over 1M reports and extracts were posted during April and over 23M downloads occurred.
- **Disputes** – A total of 315 disputes have been filed since Nodal go-live. The volume of disputes continues to be lower than expected.
- **REPs and QSEs Added/Terminated**
  - 2 new REPs
  - 5 new QSEs
  - 1 terminated REP
  - 1 terminated QSEs

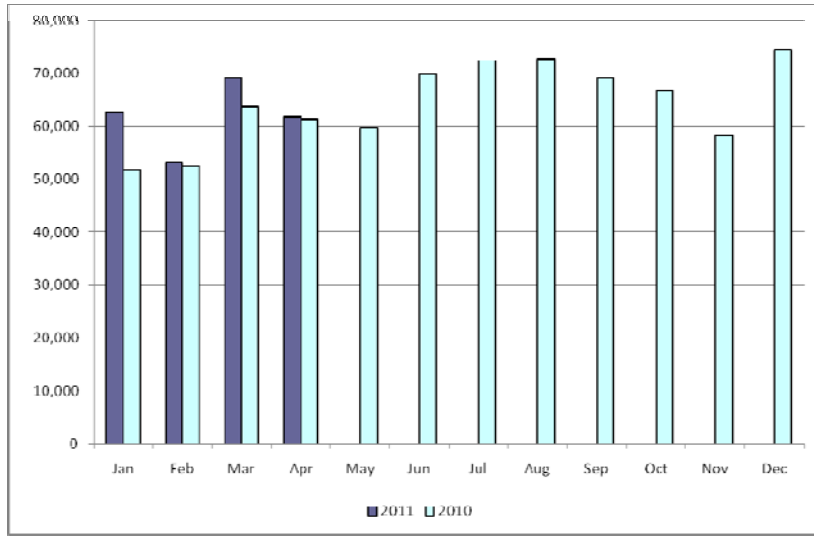
# Overall Activity

## Retail Transactions Summary

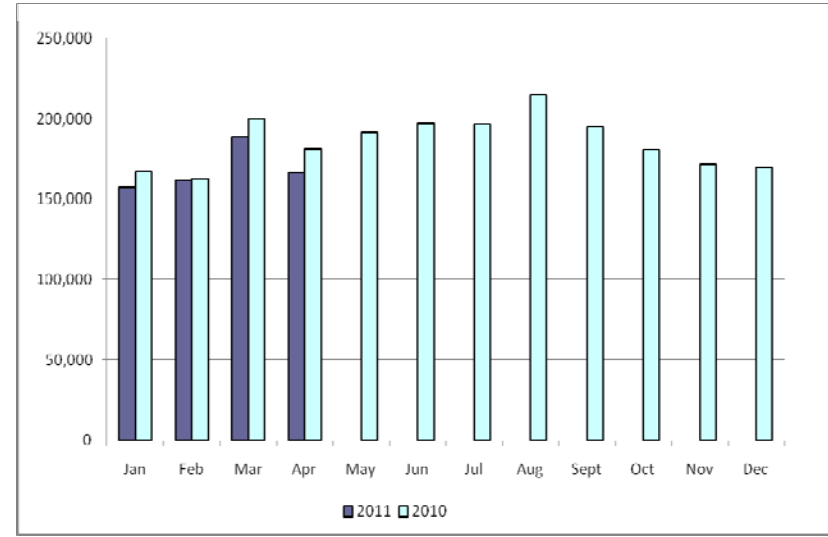
Transaction Type	YTD		April	
	<u>04/30/2011</u>	<u>04/30/2010</u>	<u>2011</u>	<u>2010</u>
Switches	246,843	229,755	61,779	61,425
Move - Ins	673,740	711,130	166,711	181,374
Move Out	342,694	385,562	86,398	102,826
CSA (Continuous Service Agreement)	105,246	138,461	25,098	32,159
Mass Transition	7,187	0	0	0
<b>Total</b>	<b>1,375,710</b>	<b>1,464,908</b>	<b>339,982</b>	<b>377,784</b>
Since June 1, 2001	41,757,302			

# Retail Transactions Summary

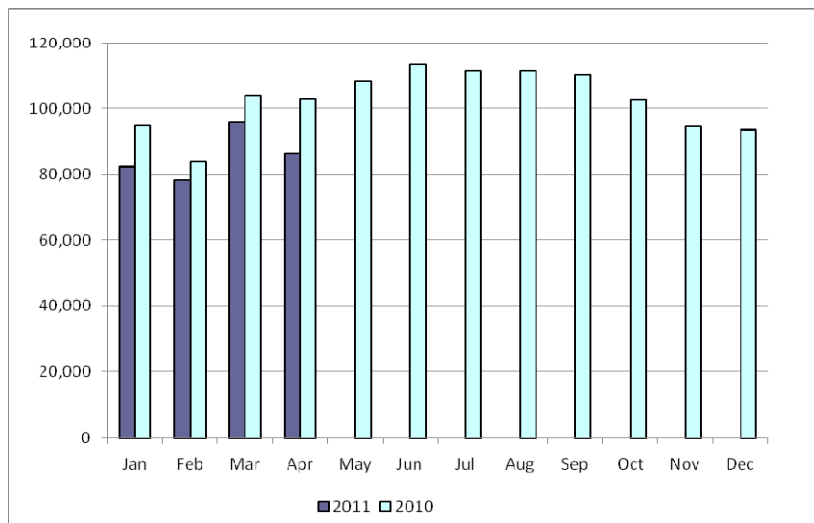
## Switches



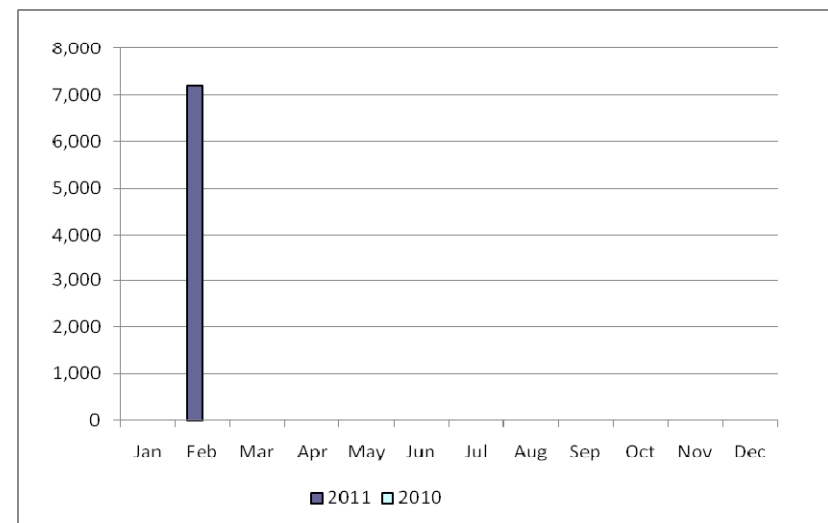
## Move-Ins



## Move-Outs

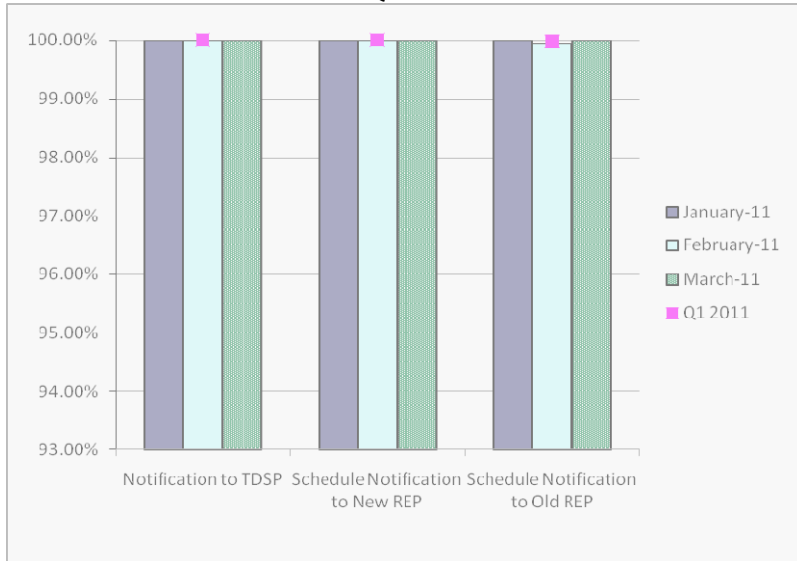


## Mass Transition

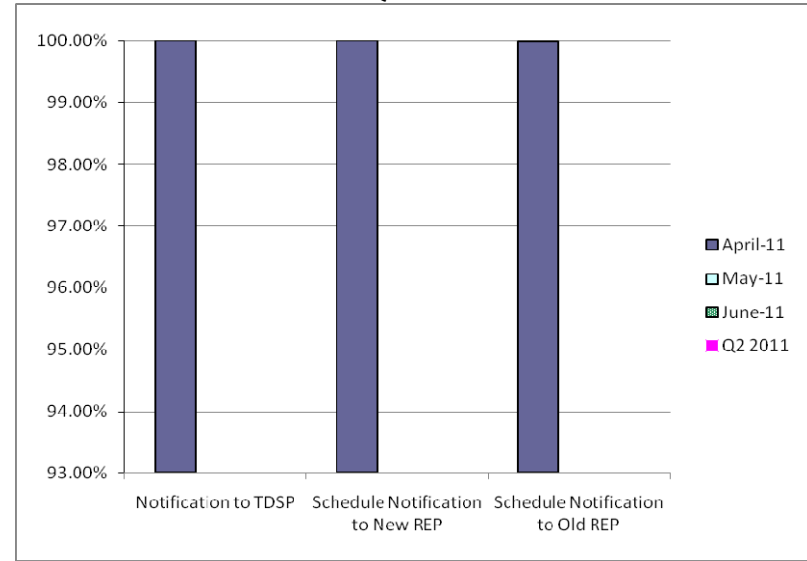


# Retail Performance Measures - 2011 Switch

### 1<sup>st</sup> Quarter



### 2<sup>nd</sup> Quarter



### 3<sup>rd</sup> Quarter

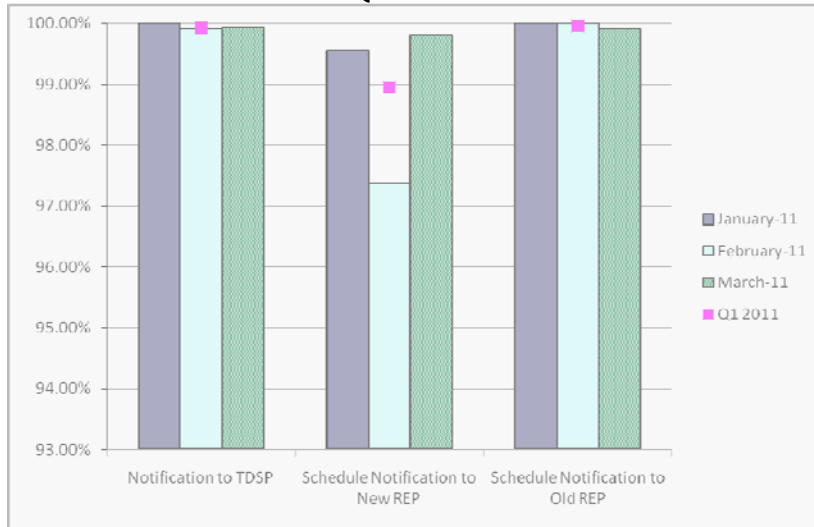


### 4<sup>th</sup> Quarter

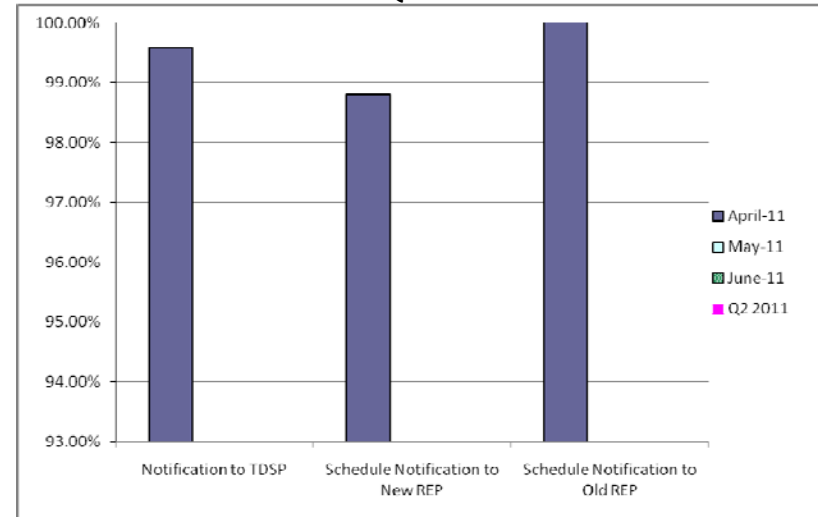


# Retail Performance Measures – 2011 Move-In / Priority

## 1<sup>st</sup> Quarter



## 2<sup>nd</sup> Quarter



## 3<sup>rd</sup> Quarter

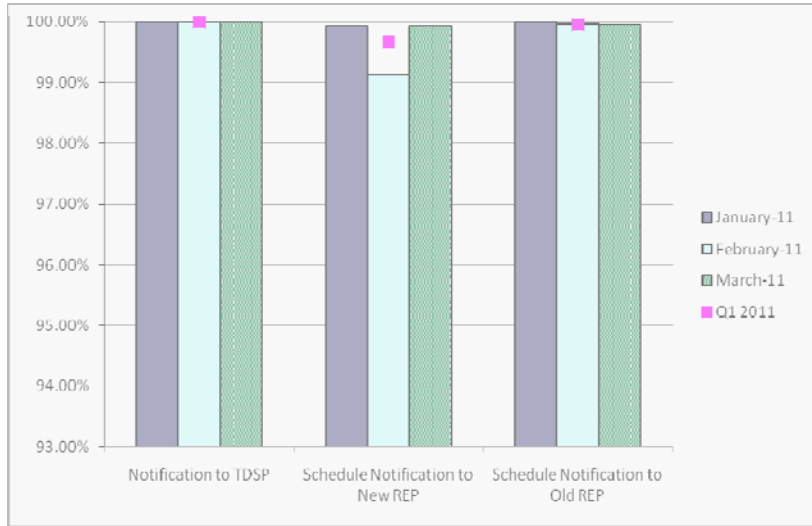


## 4<sup>th</sup> Quarter

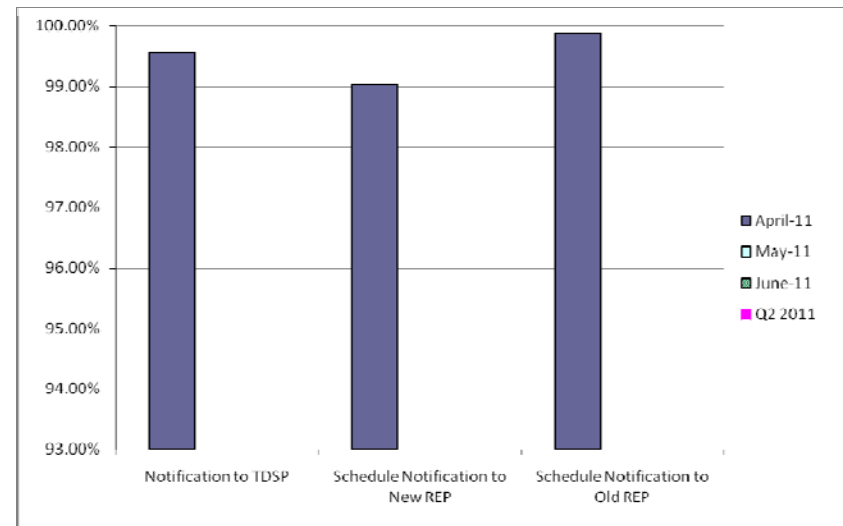


# Retail Performance Measures – 2011 Move-In / Standard

### 1<sup>st</sup> Quarter



### 2<sup>nd</sup> Quarter



### 3<sup>rd</sup> Quarter



### 4<sup>th</sup> Quarter



# Migration from Native Affiliate REP

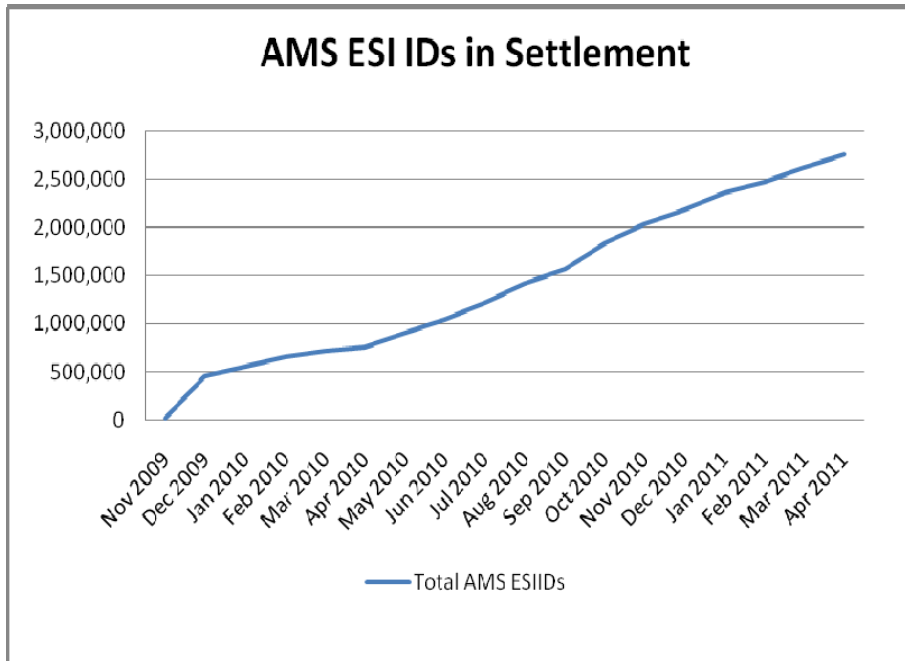
---

	% of Load <sup>1</sup>		% of ESI IDs	
	at <u>3/31/11</u>	at <u>3/31/10</u>	at <u>3/31/11</u>	at <u>3/31/10</u>
<b>Residential</b>	56%	51%	54%	50%
<b>Small Non-Residential</b>	83%	82%	61%	57%
<b>Large Non-Residential</b>	78%	77%	79%	77%

<sup>1</sup> - Percent of Deregulated (Non-NOIE) ESI IDs and Load. Usage based on monthly settlement results.

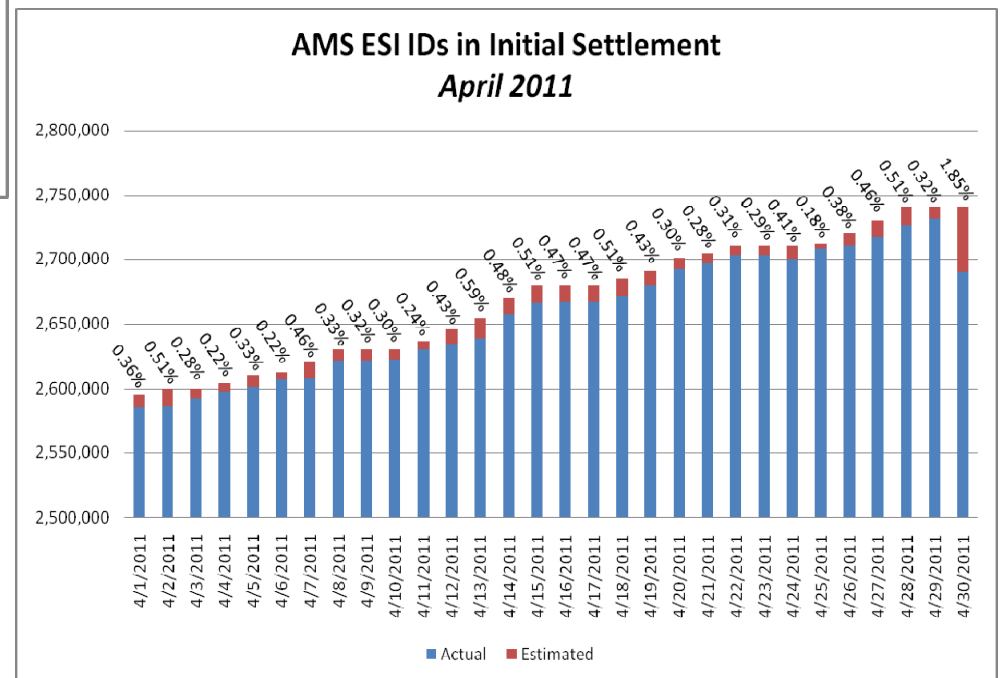


# Advanced Meter Settlement



*Typically over 99% of actual AMS data is available for initial settlement.*

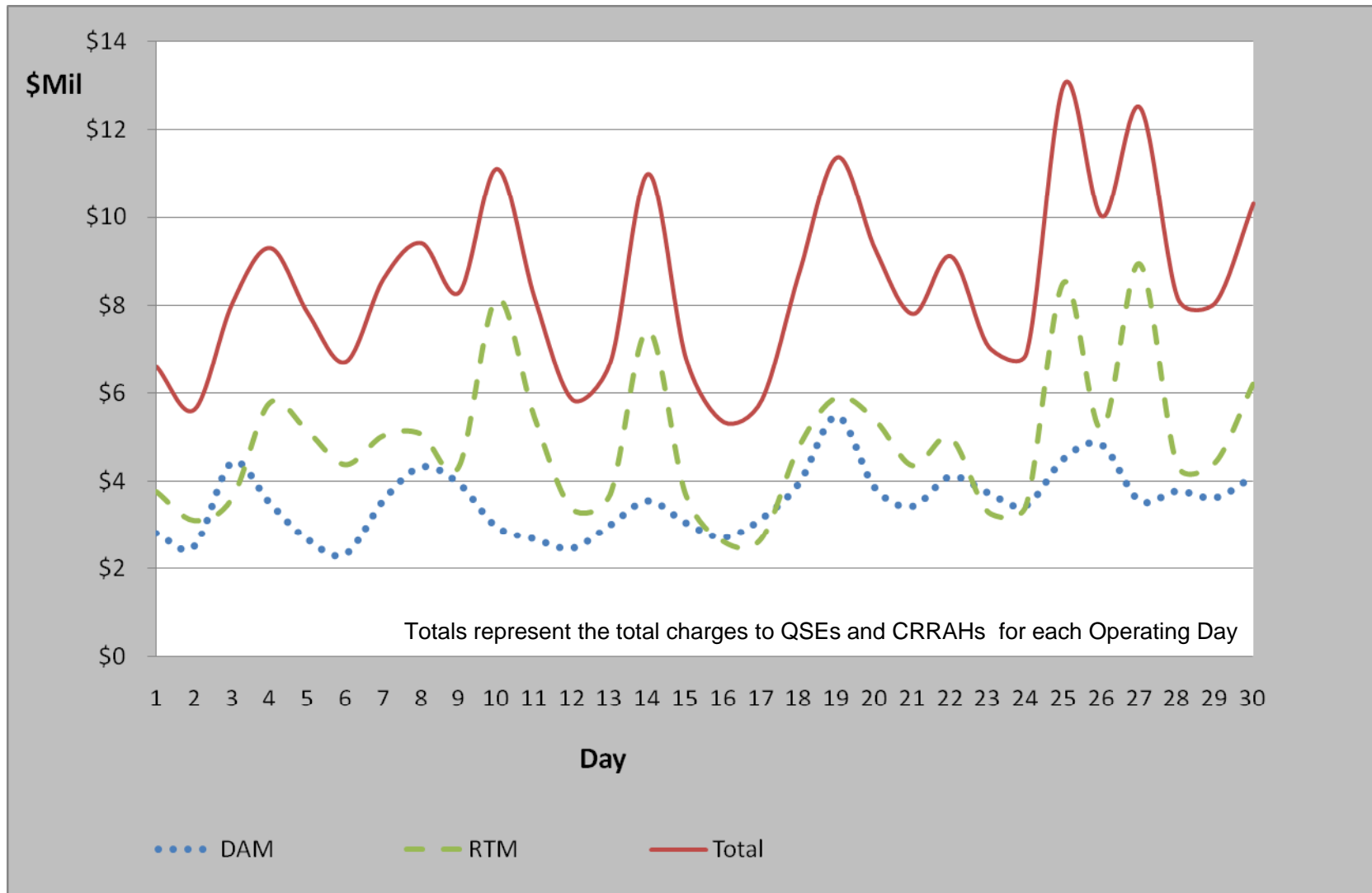
*Now settling nearly 2.75M ESIIDs with Advanced Meter Data*



# Settlements and Billing Performance Measures – April 2011

	<u>To Date</u> <u>04/30/11</u>	<u>April</u> <u>2011</u>
<b>Settlement Statements:</b>		
Zonal	38,744	5,400
Day Ahead Market	29,069	6,149
Real Time Market	46,937	12,007
Total	114,750	23,556
Untimely	199	0
Balance	114,551	23,556
% Within Protocol	<b>99.83%</b>	<b>100.00%</b>
<b>Invoices:</b>		
Zonal	4,072	735
Day Ahead Market	29,069	6,149
Real Time Market	4,217	902
CRR Auction*	414	85
Balancing Account*	697	182
CRR Auction Revenue Disbursement (CARD)	697	297
Total	39,166	8,350
Untimely	-	-
Balance	39,166	8,350
% Within Protocol	<b>100%</b>	<b>100%</b>

# April 2011 Market Total Settlement Dollars



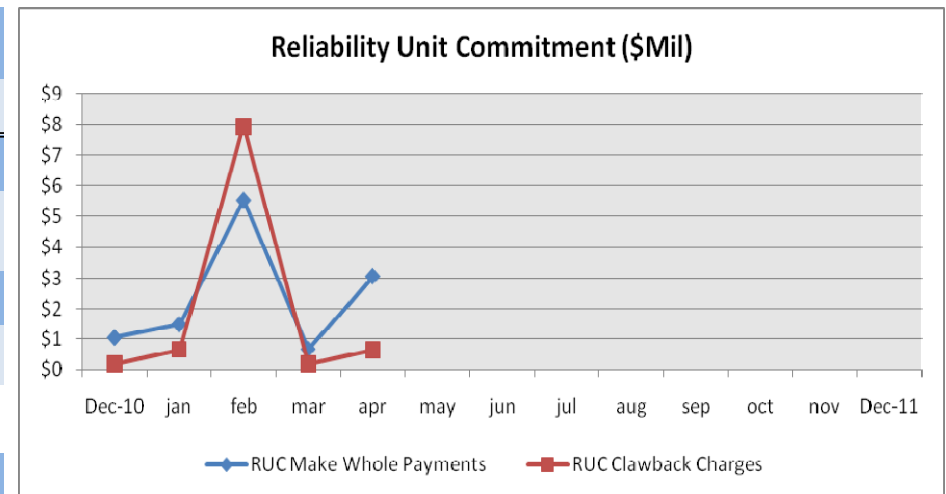
# Reliability Services

April  
2011  
(\$'s in millions)

## Reliability Unit Commitment

• Make Whole Payments	<b>(\$3.06)</b>
• Claw Back Charges	<b>\$0.64</b>
<b>Total Reliability Unit Commitment</b>	<b>(\$2.42)</b>
• Capacity Short Charges	<b>\$3.06</b>
• Make Whole Uplift	<b>\$0.00</b>
• RUC Decommitment Payments	<b>\$0.00</b>

Note:  
Positive amounts are a charge to the Market Participant  
Negative amounts are a payment to the Market Participant



# Capacity Services - Cost

	April (\$'s in millions) <u>2010</u>	April (\$'s in millions) <u>2011</u>
<b>Capacity Services**:</b>		
<b>Reg Up</b>	<b>\$5.2</b>	<b>\$4.5</b>
<b>Reg Down</b>	<b>\$3.1</b>	<b>\$2.7</b>
<b>Responsive Reserve</b>	<b>\$7.1</b>	<b>\$14.5</b>
<b>Non-Spinning Reserve</b>	<b>\$1.9</b>	<b>\$9.2</b>
<b>Black Start</b>	<b>\$0.5</b>	<b>\$0.4</b>
<b>RMR Capacity*</b>	<b>\$1.2</b>	<b>\$0.0</b>
<b>Voltage Services - Reactive Power</b>	<b>n/a</b>	<b>\$0.0</b>
<b>Voltage Services - Lost Opportunity</b>	<b>n/a</b>	<b>\$0.0</b>
<b>TOTAL CAPACITY SERVICES</b>	<b>\$19.0</b>	<b>\$31.3</b>

\* Includes Stand-by, Energy, and Non-Performance

\*\*Includes Day-Ahead Market and Supplementary Ancillary Service Markets

# Capacity Services - Volumes

<b>Reg Up*:</b>	<u>April 2010</u>	<u>April 2011</u>
Required (MW)	688,811	410,735
Self Arranged (MW)	129,048	11,863
Procured DAM (MW)		398,872
Procured RTM (MW)		1,354
Failure to Provide (MW)		1,354
Total Procured	561,402	400,226
% Procured	81.5%	97.4%
<b>Reg Down*:</b>		
Required (MW)	653,527	352,021
Self Arranged (MW)	128,126	19,025
Procured DAM (MW)		332,996
Procured RTM (MW)		1,235
Failure to Provide (MW)		1,235
Total Procured	527,224	334,231
% Procured	80.7%	94.9%
<b>Responsive Reserve:</b>		
Required (MW)	1,653,851	1,656,094
Self Arranged (MW)	607,735	370,310
Procured DAM (MW)		1,285,784
Procured RTM (MW)		1,253
Failure to Provide (MW)		1,356
Total Procured	1,048,265	1,287,037
% Procured	63.4%	77.7%
<b>Non-Spinning Reserve:</b>		
Required (MW)	1,099,517	1,265,280
Self Arranged (MW)	156,686	14,807
Procured DAM (MW)		1,250,474
Procured RTM (MW)		3,727
Failure to Provide (MW)		376
Total Procured	944,434	1,254,201
% Procured	85.9%	99.1%

\*A/S Methodology changed in Dec 2010

# Energy Settlement

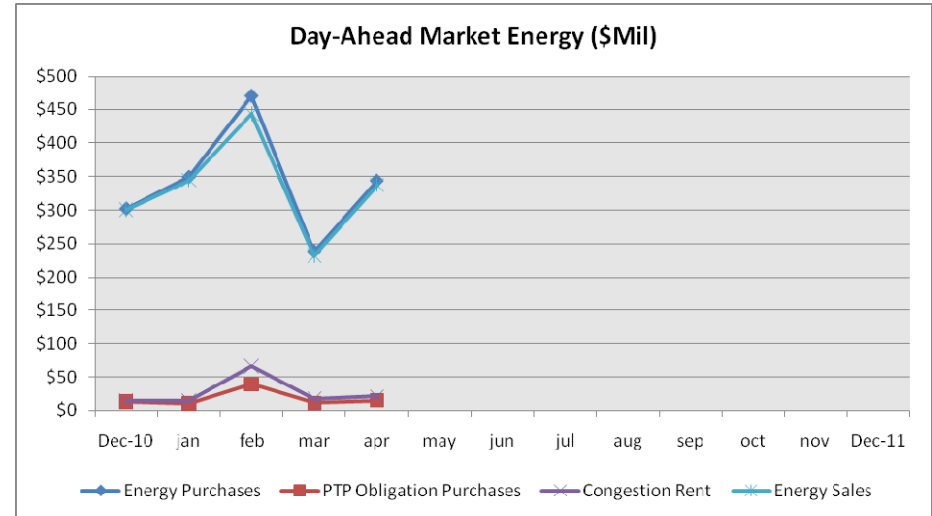
April 2011  
(\$'s in millions)

<b>• Day Ahead Market Energy Settlement</b>	
Energy Purchases	\$343.63
Point to Point Obligations Purchases	\$14.71
RMR Day Ahead Revenue	\$0.00
Energy Sales	<u>(\$337.60)</u>
Day Ahead Congestion Rent	\$20.73
Day Ahead Make Whole Payments	(\$0.11)
<b>• Real Time Market Energy Settlement</b>	
Real Time Energy Imbalance	
~Resource Node Settlement Points	(\$488.22)
~Load Zone Settlement Points	\$649.20
~ Hub Settlement Points	(\$120.11)
Real Time Congestion from Self Schedules	\$0.65
Block Load Transfers and DC Ties	<u>(\$7.25)</u>
Energy Settlements Impact to Revenue Neutrality	<u>\$34.28</u>
Emergency Energy Payments	(\$0.31)
Base Point Deviation	\$0.50

(MWh in millions)

Real Time Metered Generation	24.32
------------------------------	-------

Note:  
Positive amounts are a charge to the Market Participant  
Negative amounts are a payment to the Market Participant



# Congestion Management

April 2011  
(\$'s in millions)

• Auction Disbursements	
Annual Auction	\$0.00
Monthly Auction	(\$20.43)
<b>Total Disbursements</b>	<b>(\$20.43)</b>
• CRR Settlement	
Day Ahead CRR Settlement	(\$18.02)
Day Ahead CRR Short Charges	\$1.00
Day Ahead CRR Short Charges Refunded	(\$1.00)
Real Time CRR Settlement	(\$6.80)
Real Time CRR Short Charges	\$0.17
Real Time CRR Short Charges Refunded	(\$0.17)
<b>Total Proceeds</b>	<b>(\$24.82)</b>
• PTP Obligations Acquired in DAM	
Day Ahead Point to Point Obligation Settlement	\$14.71
Real Time Point To Point Obligation Settlement	(\$25.11)
<b>Net Settlement</b>	<b>(\$10.40)</b>

Note:  
Positive amounts are a charge to the Market Participant  
Negative amounts are a payment to the Market Participant



# Net Impact to Load

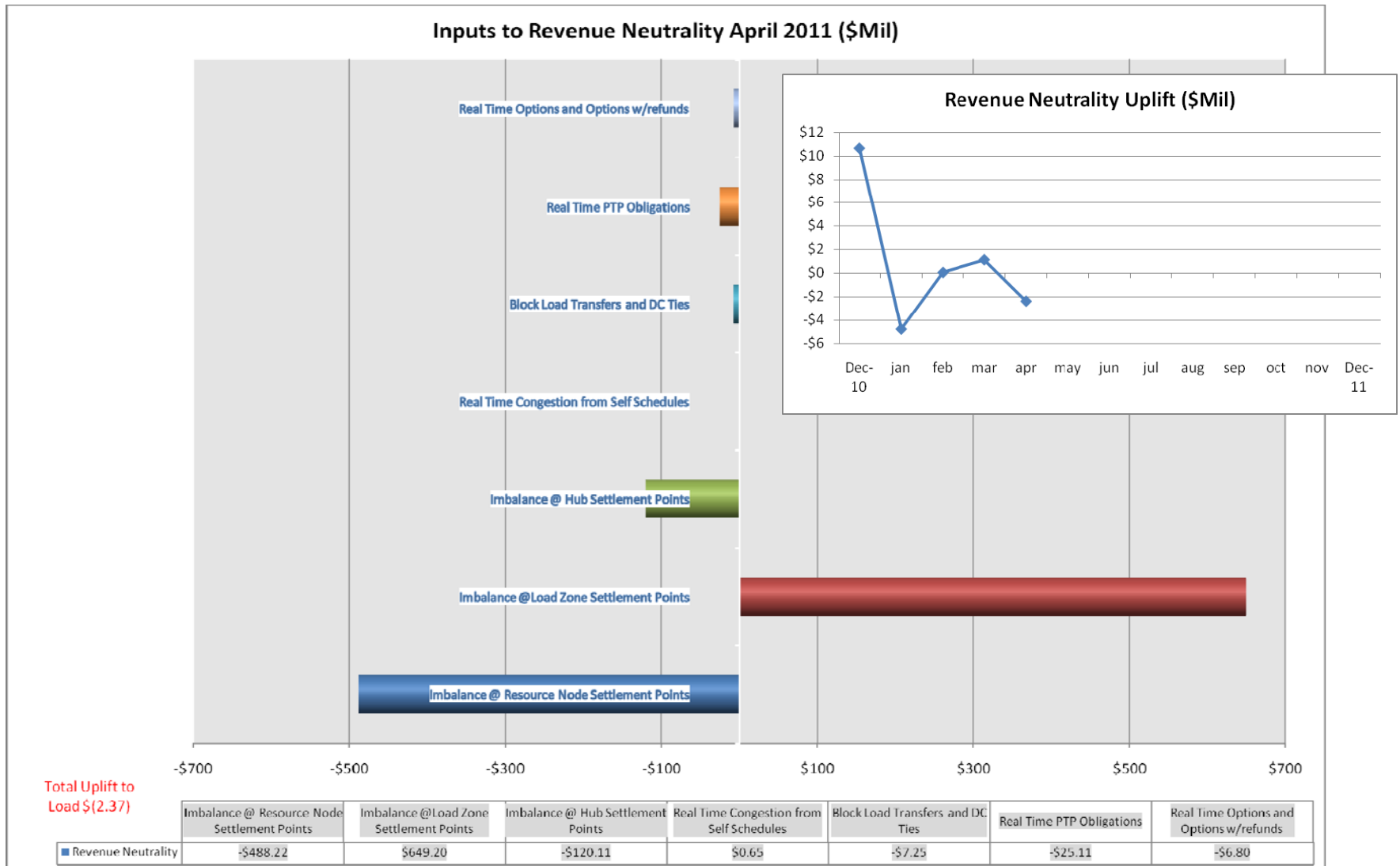
April 2011  
 (\$'s in millions)

<i>Market-Based Fees</i>	
<b>Auction Disbursements</b>	<b>(\$20.43)</b>
<b>Balancing Account Proceeds</b>	<b>(\$2.70)</b>
<b>Net Reliability Unit Commitment</b>	<b>\$2.42</b>
<b>Capacity Services*</b>	<b>\$31.31</b>
<b>Real Time Revenue Neutrality</b>	<b>(\$2.37)</b>
<b>Emergency Energy Payments</b>	<b>\$0.31</b>
<b>Base Point Deviation Charge</b>	<b>(\$0.50)</b>
<i>ERCOT Fees</i>	
<b>ERCOT Administrative Fee</b>	<b>\$10.25</b>
<b><i>Net Impact to Load</i></b>	<b>\$18.28</b>

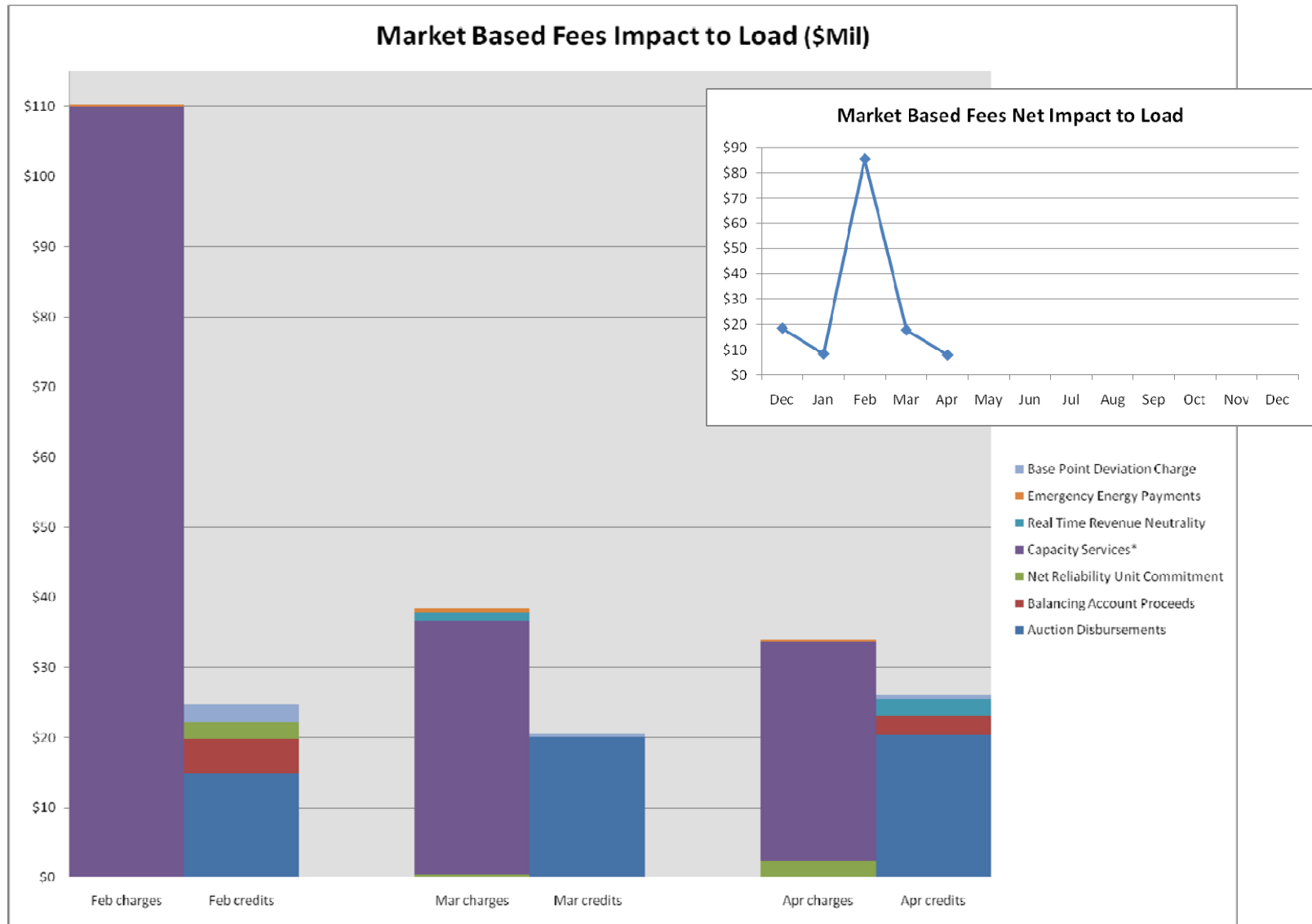
\* RMR included in Capacity Services

Note:  
 Positive amounts are a charge to the Market Participant  
 Negative amounts are a payment to the Market Participant

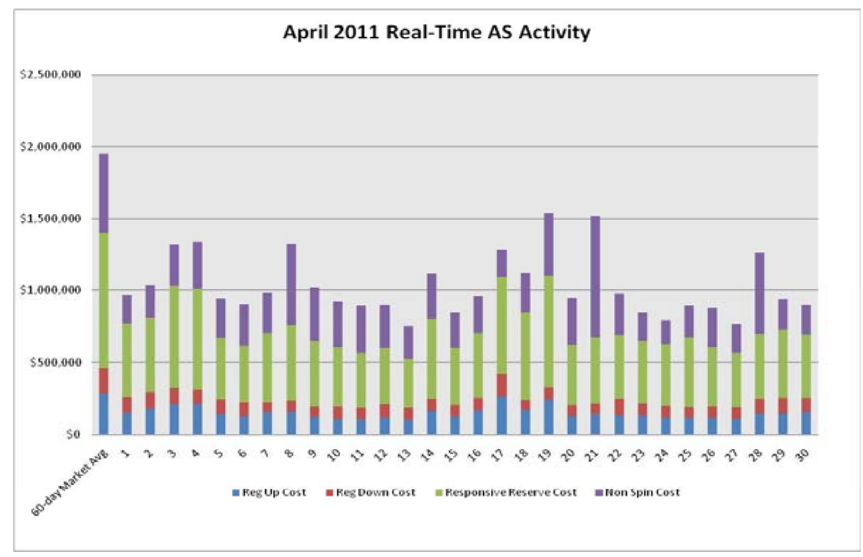
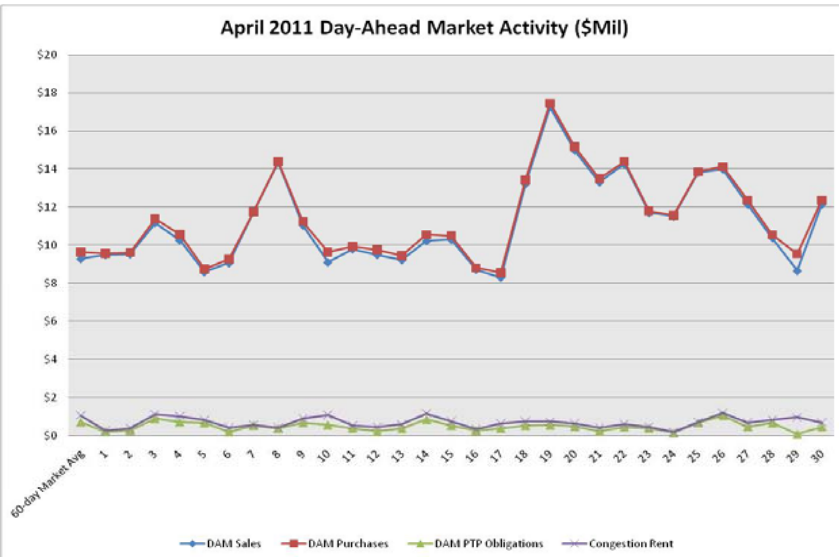
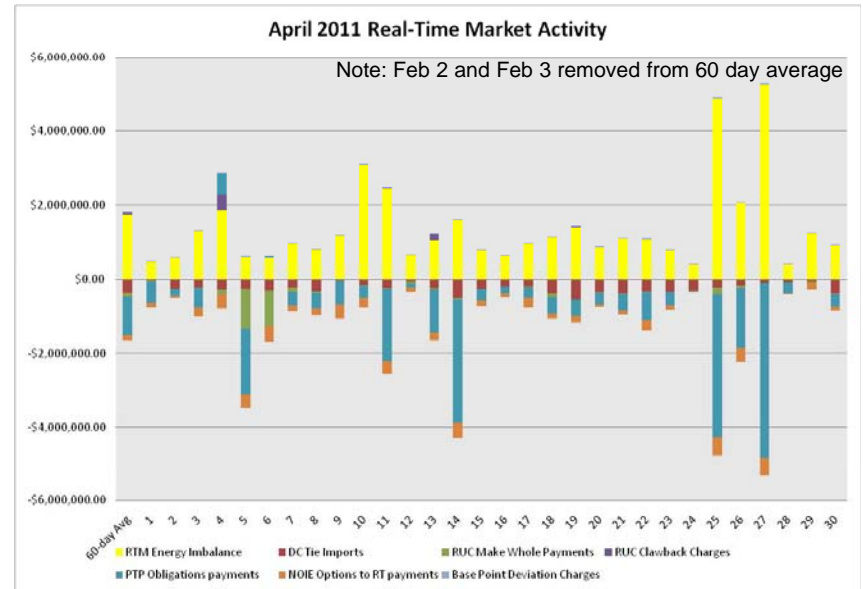
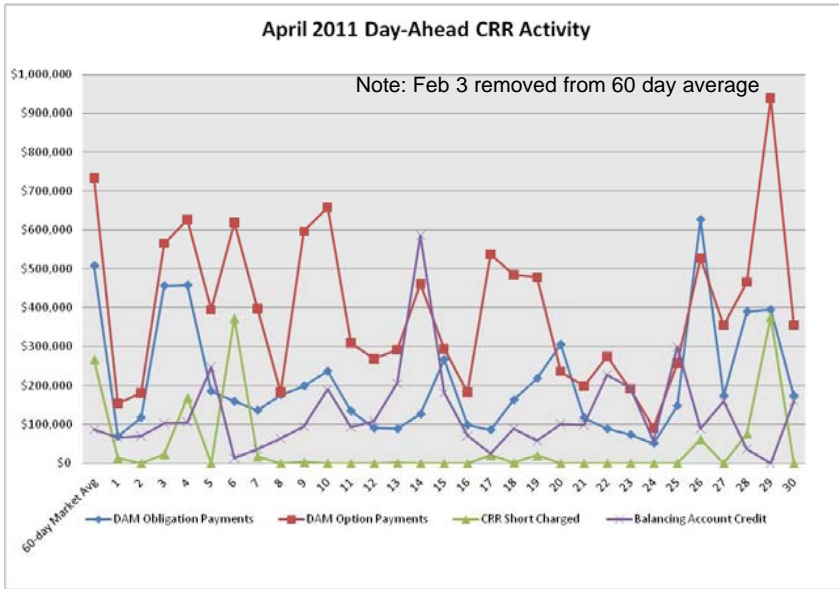
# Revenue Neutrality



# Market Based Fees

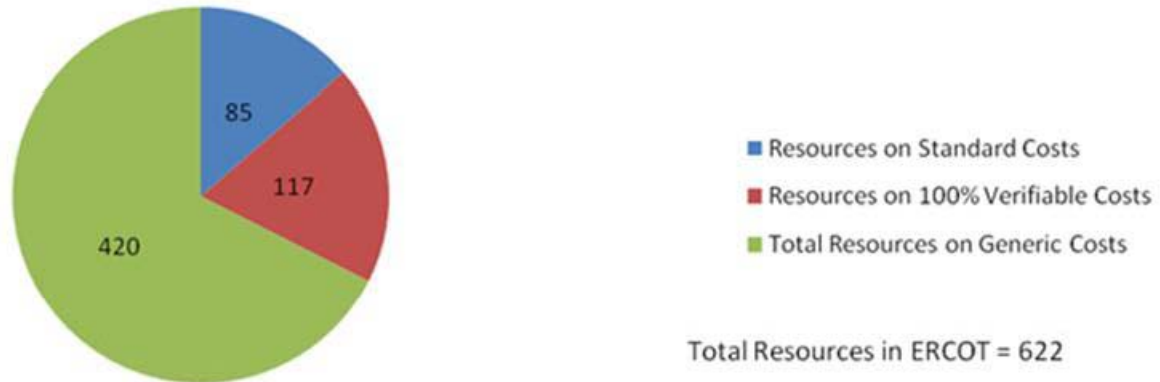


# Daily DAM and RTM Activity



# Verifiable Costs

## Total Resources Under Different Cost Types



## Total MWs Under Different Cost types



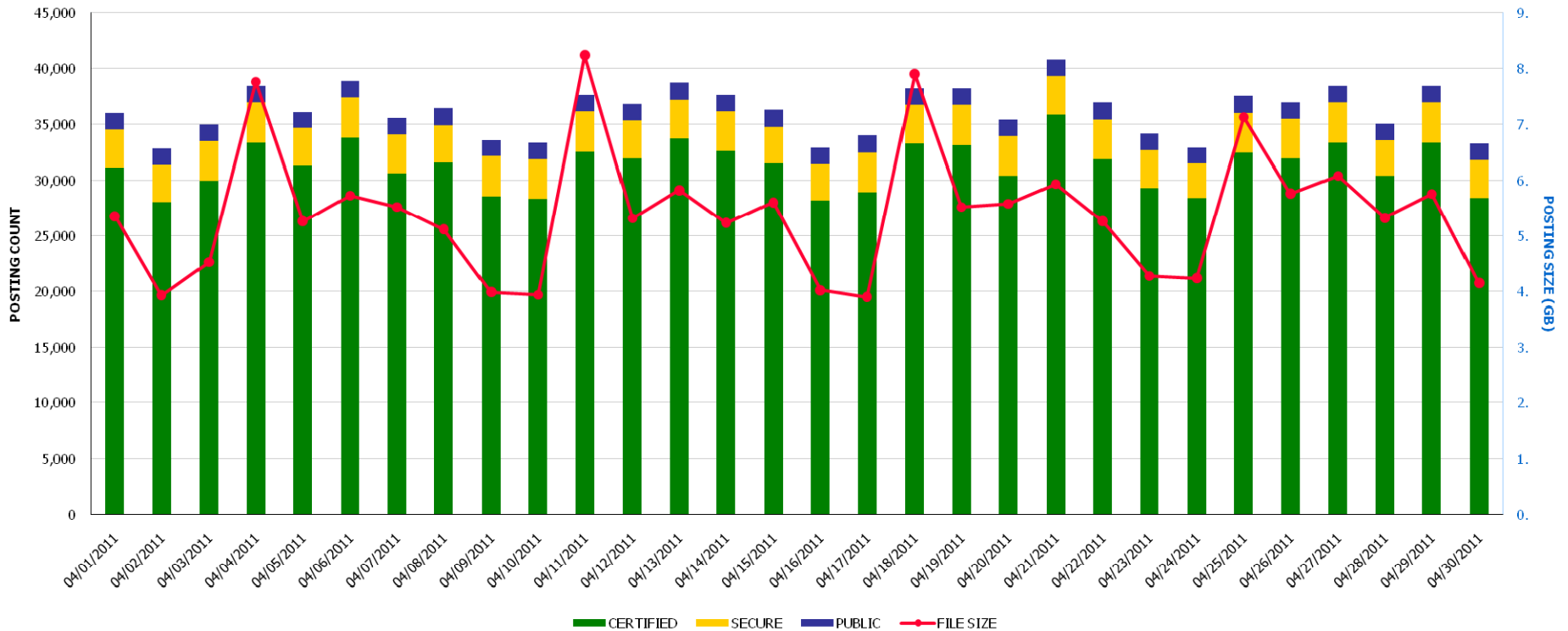
# Extract & Report Postings

## Market Extract & Report Postings

Run on May 4, 2011 3:08:41 AM

Start Date: April 1, 2011

End Date: April 30, 2011



TOTAL POSTINGS	TOTAL FILE SIZE (GB)
1,087,095	162.3

**Posting Classifications:**

Certified = Available only to the Market Participant owning that data  
 Secure = Available to any Market Participant with a digital certificate  
 Public = Available to all Market Participants & general public (via ERCOT.com)



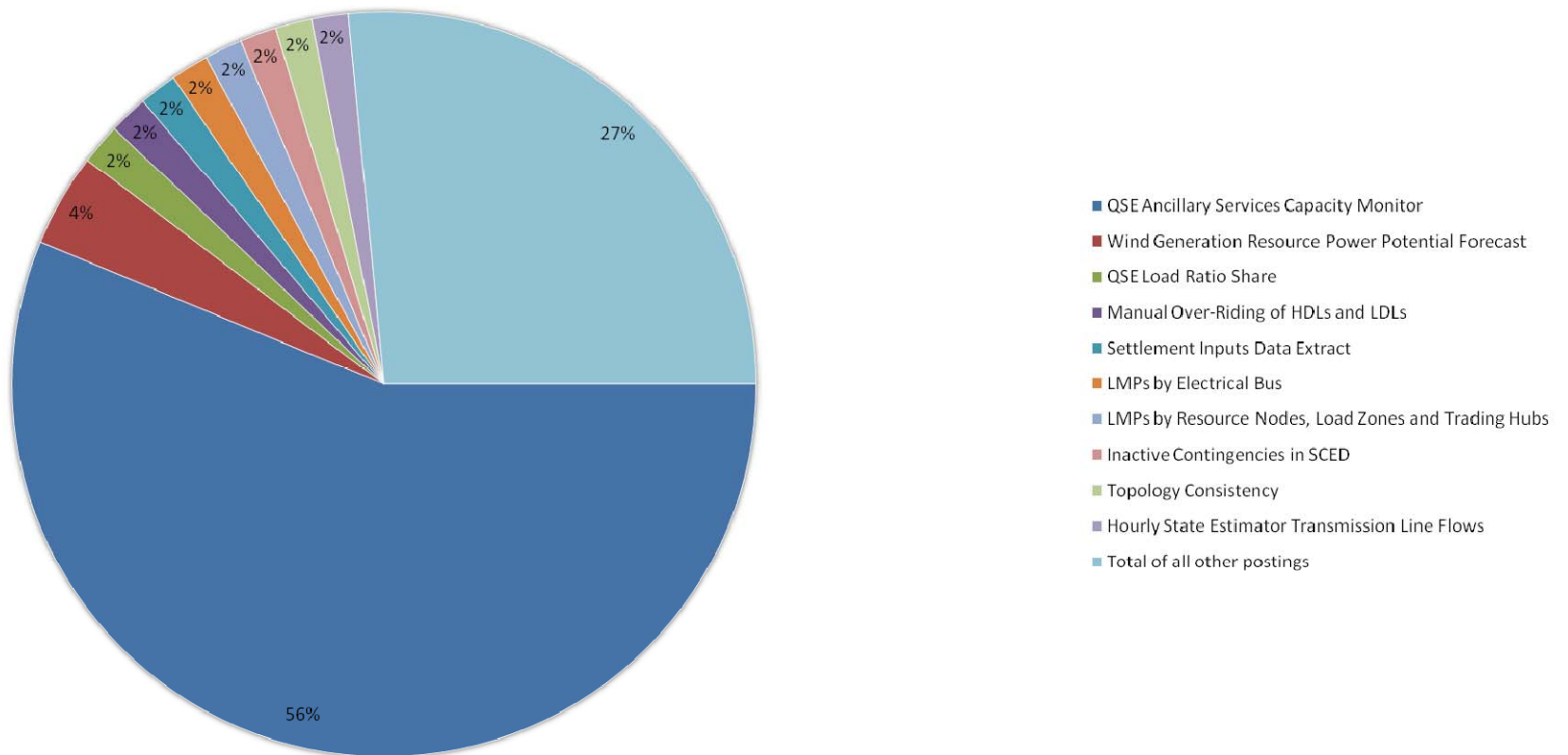
# Extract & Report Postings

## Top 10 Market Extract & Report Postings

Run on May 4, 2011 9:44:14 AM

**Start Date:** April 1, 2011  
**End Date:** April 30, 2011

**Publish Count**

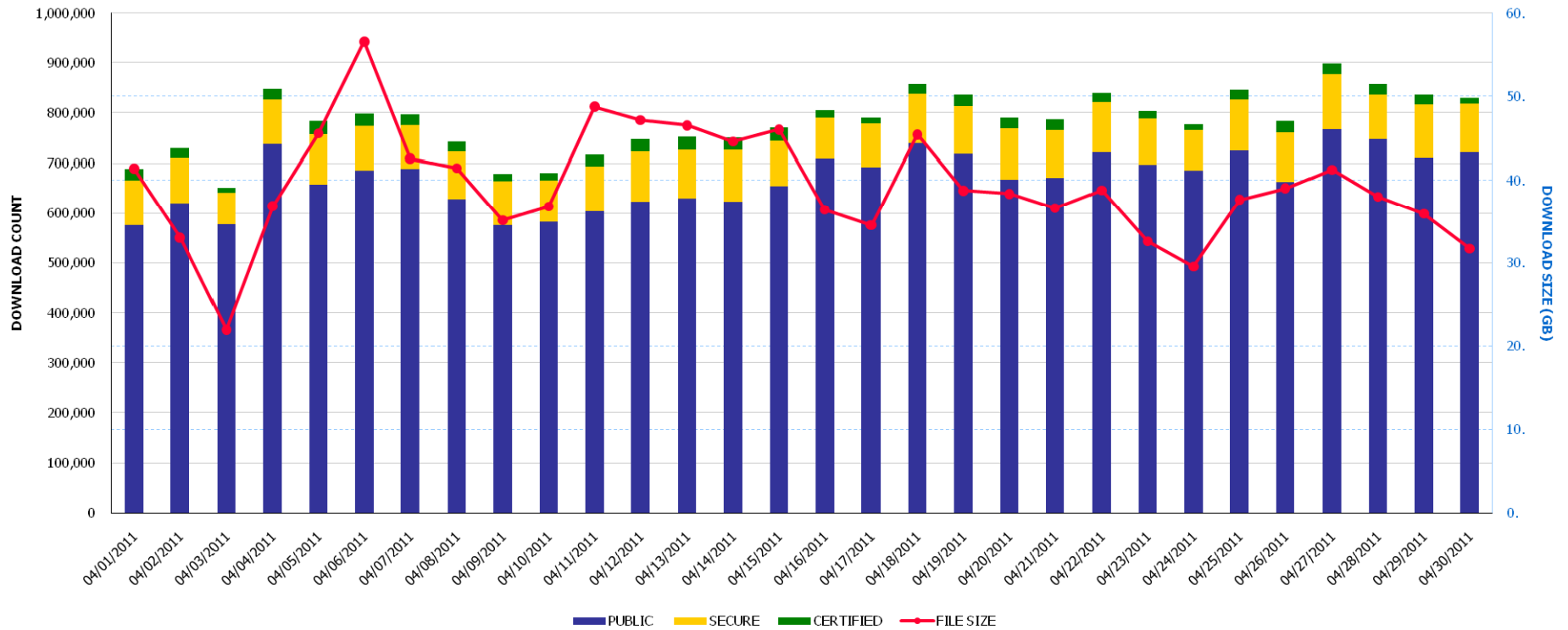


# Extract & Report Downloads

## Market Extract & Report Downloads

Run on May 4, 2011 3:00:10 AM

**Start Date:** April 1, 2011  
**End Date:** April 30, 2011



TOTAL DOWNLOADS	TOTAL FILE SIZE (GB)
23,462,233	1,178.39

**Posting Classifications:**  
 Certified = Available only to the Market Participant owning that data  
 Secure = Available to any Market Participant with a digital certificate  
 Public = Available to all Market Participants & general public (via ERCOT.com)



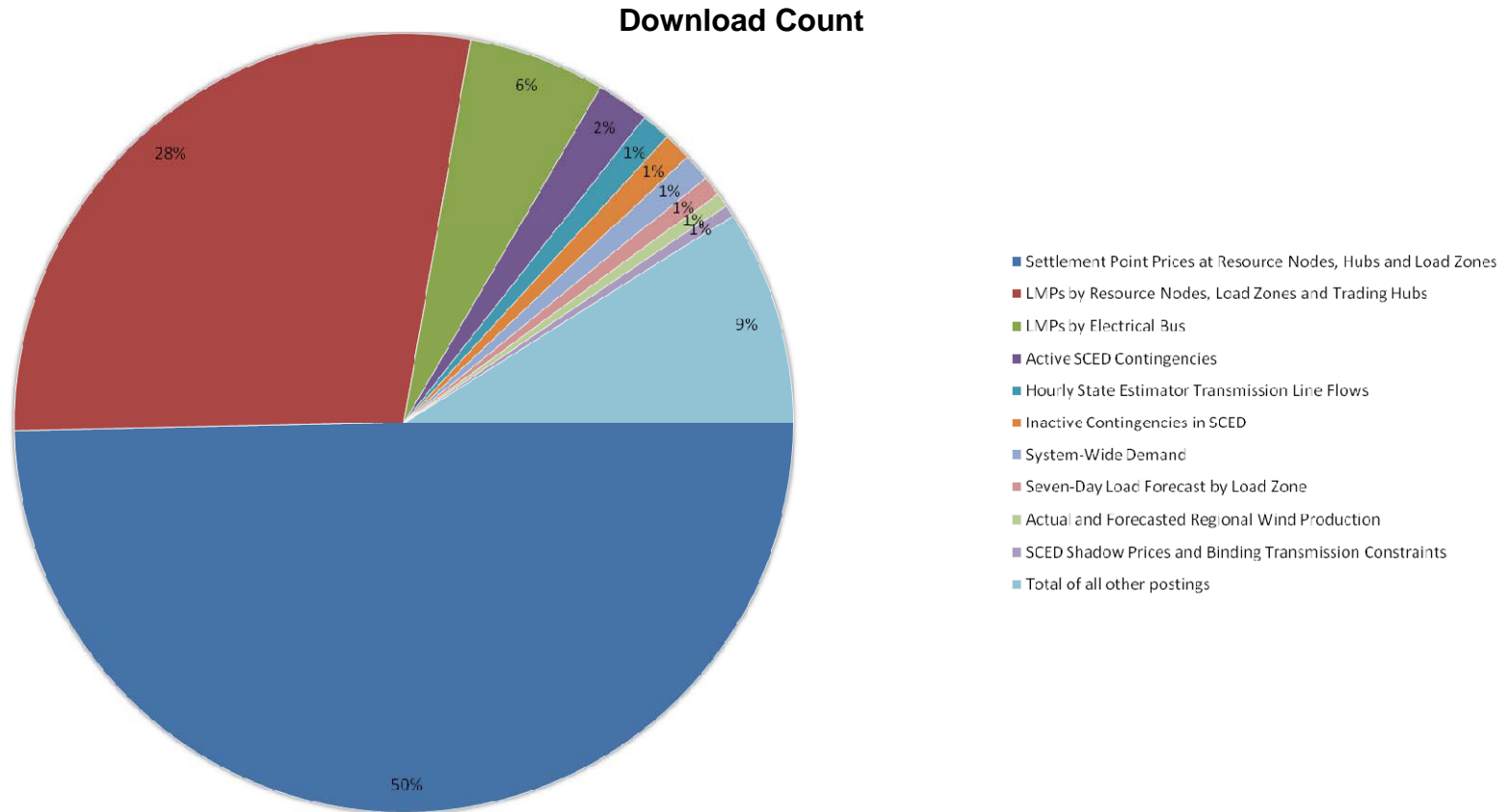


# Extract & Report Downloads

## Top 10 Market Extract & Report Downloads

Run on May 4, 2011 9:37:38 AM

**Start Date:** April 1, 2011  
**End Date:** April 30, 2011



# ERCOT Wholesale Market Settlement Dispute Report

## April 2011

	CRR Market		Day-Ahead Mkt		Real Time Mkt	
	Current Month*	Since Dec 1, 2010	Current Month*	Since Dec 1, 2010	Current Month*	Since Dec 1, 2010
Received	2	17	9	56	57	242
Granted	0	1	0	0	39	48
Granted w/Exception	0	0	0	0	2	6
Denied	0	14	7	44	8	74
In Process	0	2	0	12	0	114

\*Some current month activity is on disputes that were received in prior months.

# REPs and QSEs Added/Terminated – as of April 30, 2011

- **Added REPs**

- ✓ Penstar Power LLC 1 (LSE)
- ✓ Veteran Energy LLC (LSE)

- **Terminated REPs**

- ✓ Lahey and Partners LLC (LSE)

- **Added QSEs**

- ✓ Wolverine Trading LLC (QSE – L2)
- ✓ XO Energy TX LP (QSE – L1)
- ✓ Monterey TX LLC (QSE – L1)
- ✓ Sumer Capital Partners (QSE – L1)
- ✓ Scurry County Wind LP (QSE – L3)

- **Terminated QSEs**

- ✓ CBK Group LTD (QSE – L1)

QSE Count	Level	Qualification Description
83	1	<i>Performs Inter-QSE trades only; no direct representation of Load Serving Entity or Resource Entity</i>
127	2	<i>Represents Load Serving Entity ; no direct representation of Resource Entity</i>
61	3	<i>Represents Load Serving Entity and/or Resource Entity without providing Ancillary Services</i>
53	4	<i>Represents Load Serving Entity and/or Resource Entity and provide Ancillary Services</i>
<b>324 total (includes Sub-QSEs)</b>		

---

Questions?