



Commercial Market Operations Report

Betty Day

ERCOT Board of Directors

May 17, 2011

Summary

Retail Activity

- **Overall Activity** – Switch activity is comparable to the same period last year. Move-In/Move-Out transactions are lower.
- **Transaction Performance Measures** – First Quarter 2011 measures were above the 98% target. April 2011 was also above 98%.
- **Advanced Metering** – Now settling nearly 2.75M ESIDs using 15-minute Advanced Metering data.

Wholesale Activity **(April settlement information will be provided prior to Board meeting)**

- **Settlements & Billing Performance** –
- **Settlement Dollars** –
- **Reliability Services** –
- **Capacity Services** –
- **Congestion Management** –
- **Revenue Neutrality** –
- **Verifiable Costs** –
- **Market Extracts and Reports** – Over 1M reports and extracts were posted during April and over 23M downloads occurred.
- **Disputes** – A total of 315 disputes have been filed since Nodal go-live. The volume of disputes continues to be lower than expected.
- **REPs and QSEs Added/Terminated**
 - 2 new REPs
 - 1 terminated REP
 - 5 new QSEs
 - 1 terminated QSEs

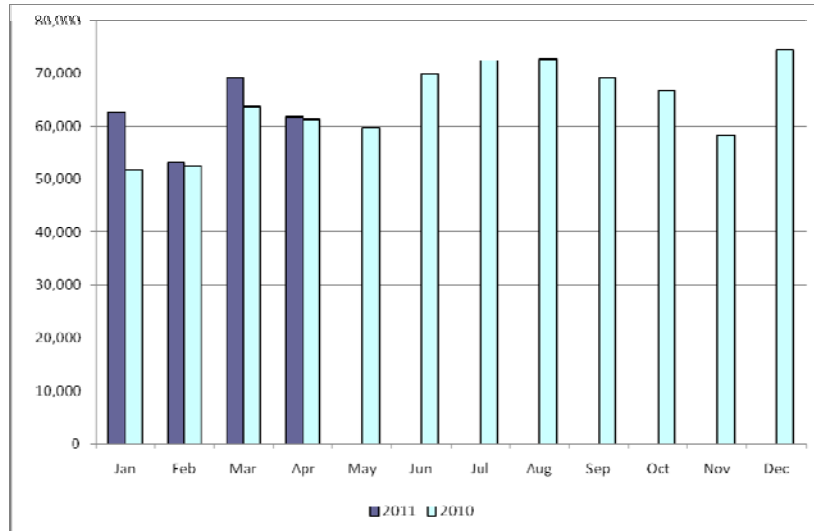
Overall Activity

Retail Transactions Summary

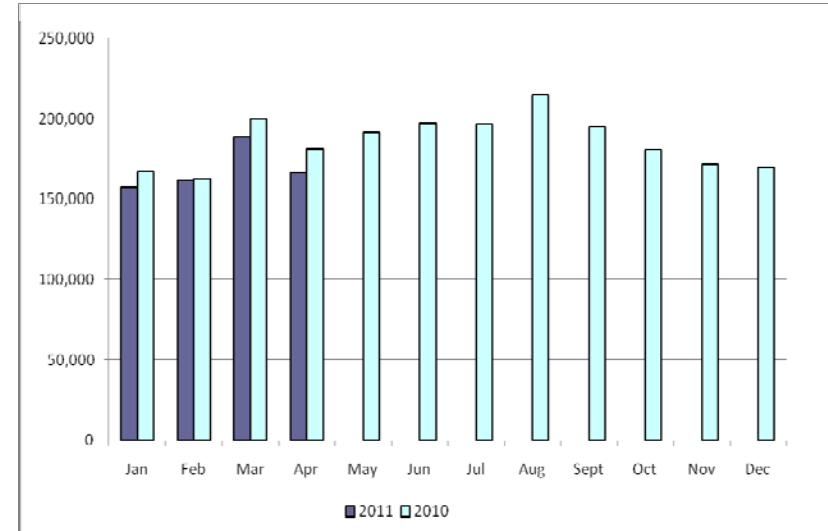
Transaction Type	YTD		April	
	<u>04/30/2011</u>	<u>04/30/2010</u>	<u>2011</u>	<u>2010</u>
Switches	246,843	229,755	61,779	61,425
Move - Ins	673,740	711,130	166,711	181,374
Move Out	342,694	385,562	86,398	102,826
CSA (Continuous Service Agreement)	105,246	138,461	25,098	32,159
Mass Transition	7,187	0	0	0
Total	1,375,710	1,464,908	339,982	377,784
Since June 1, 2001	41,757,302			

Retail Transactions Summary

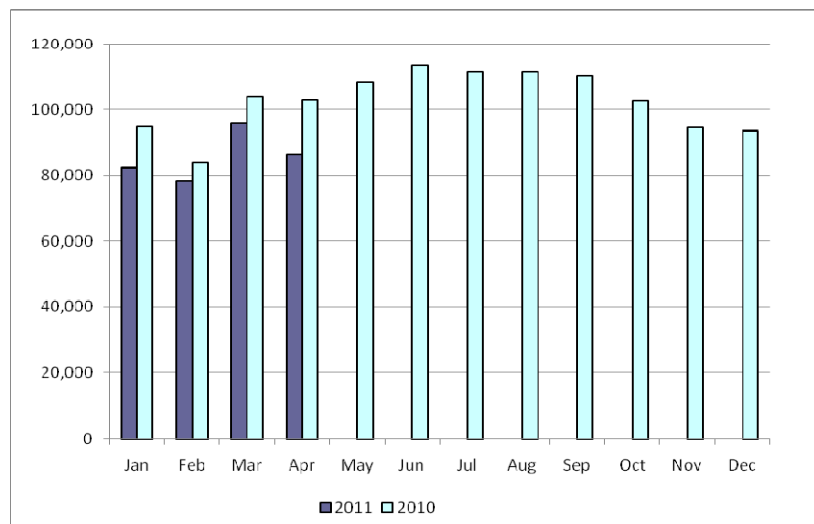
Switches



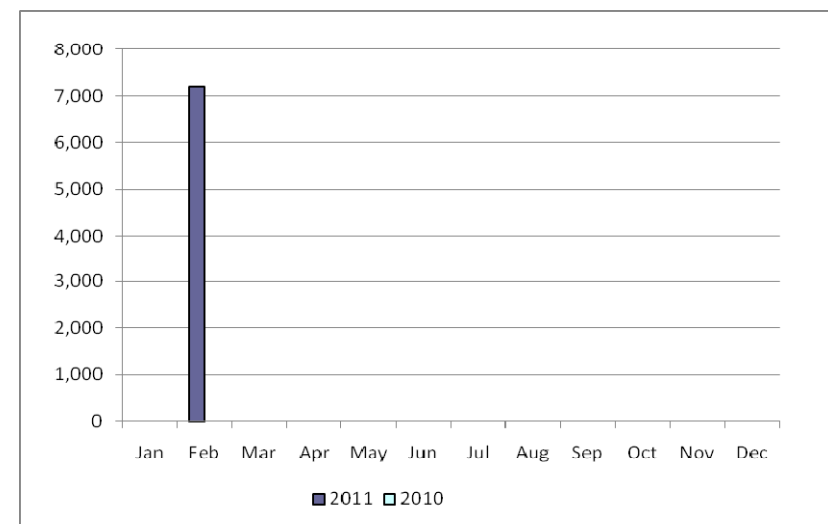
Move-Ins



Move-Outs

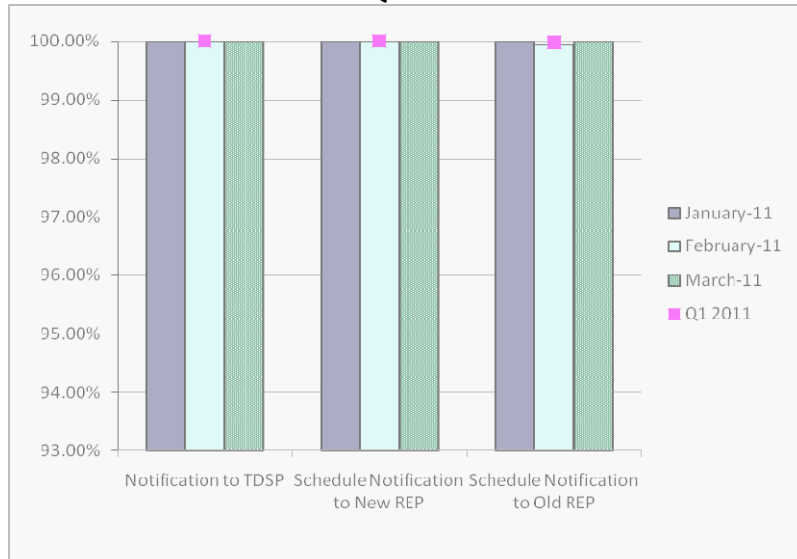


Mass Transition

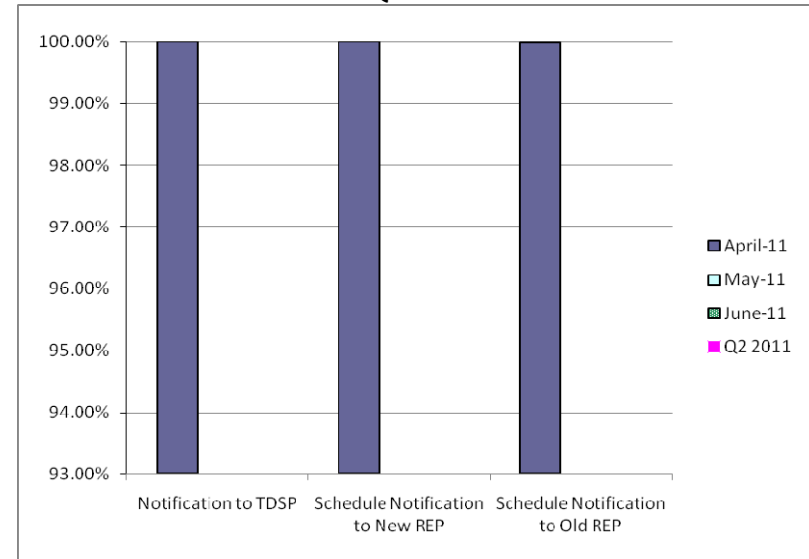


Retail Performance Measures – 2011 Switch

1st Quarter



2nd Quarter



3rd Quarter



4th Quarter

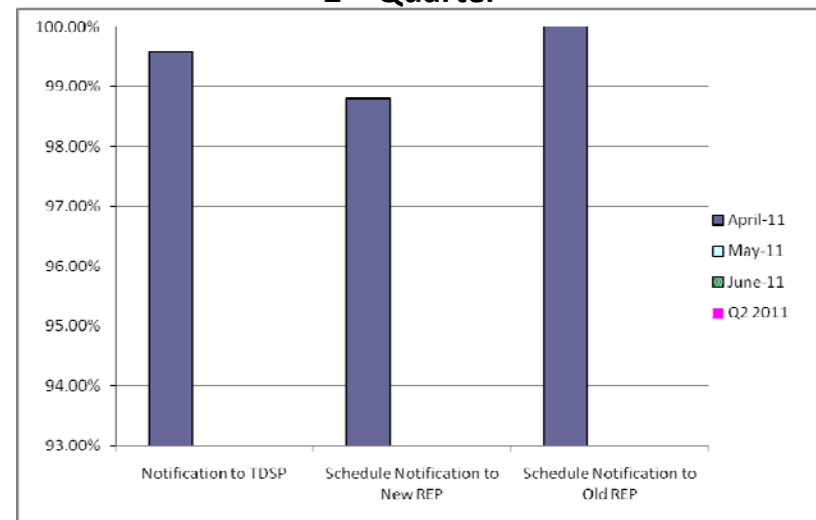


Retail Performance Measures – 2011 Move-In / Priority

1st Quarter



2nd Quarter



3rd Quarter

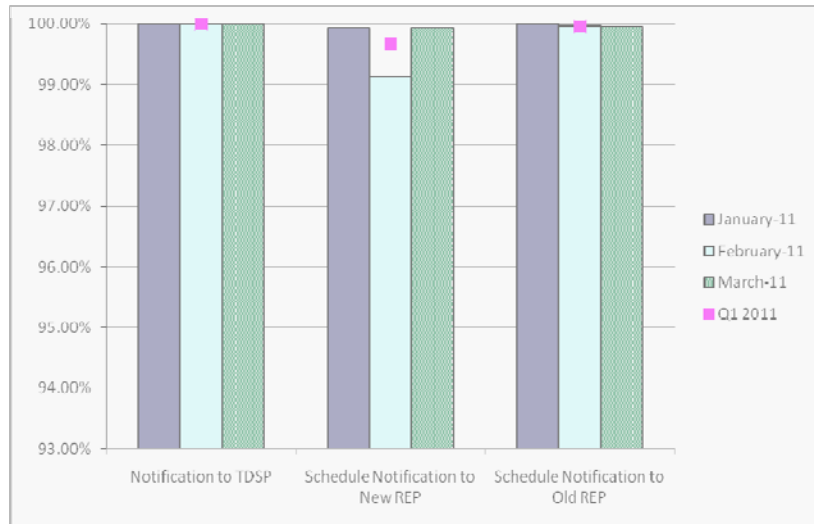


4th Quarter

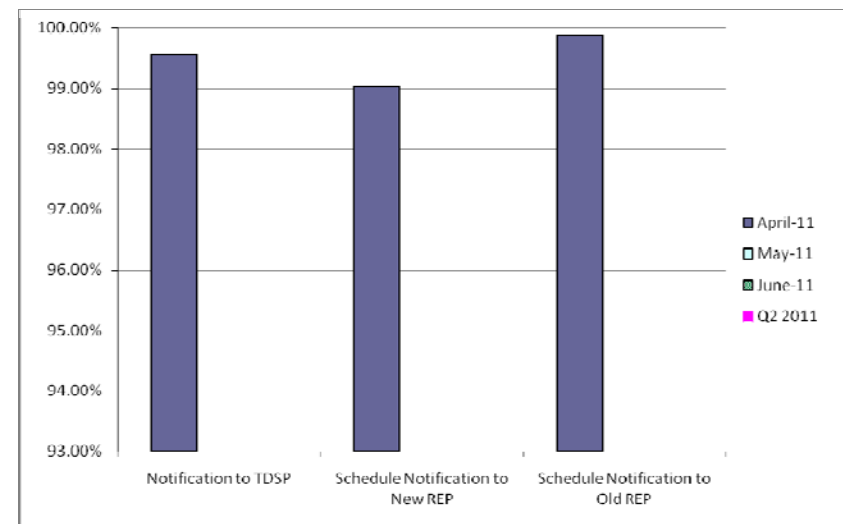


Retail Performance Measures – 2011 Move-In / Standard

1st Quarter



2nd Quarter



3rd Quarter



4th Quarter



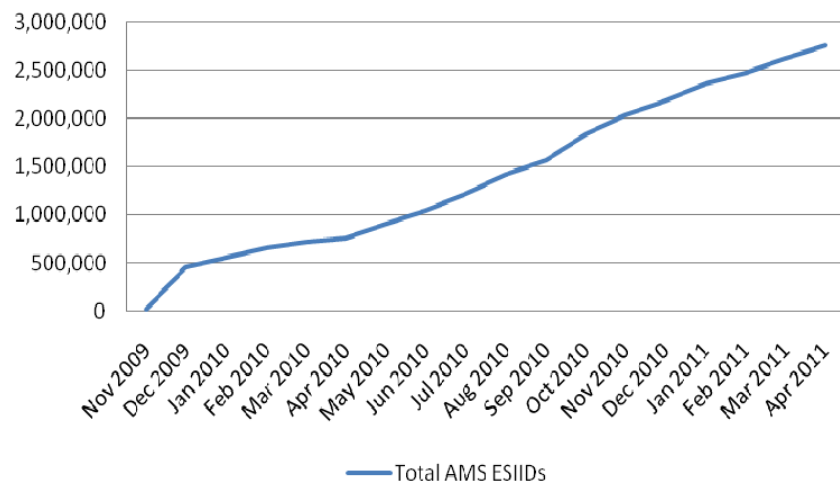
Migration from Native Affiliate REP

	% of Load ¹		% of ESI IDs	
	at <u>3/31/11</u>	at <u>3/31/10</u>	at <u>3/31/11</u>	at <u>3/31/10</u>
Residential	56%	51%	54%	50%
Small Non-Residential	83%	82%	61%	57%
Large Non-Residential	78%	77%	79%	77%

¹ - Percent of Deregulated (Non-NOIE) ESI IDs and Load. Usage based on monthly settlement results.

Advanced Meter Settlement

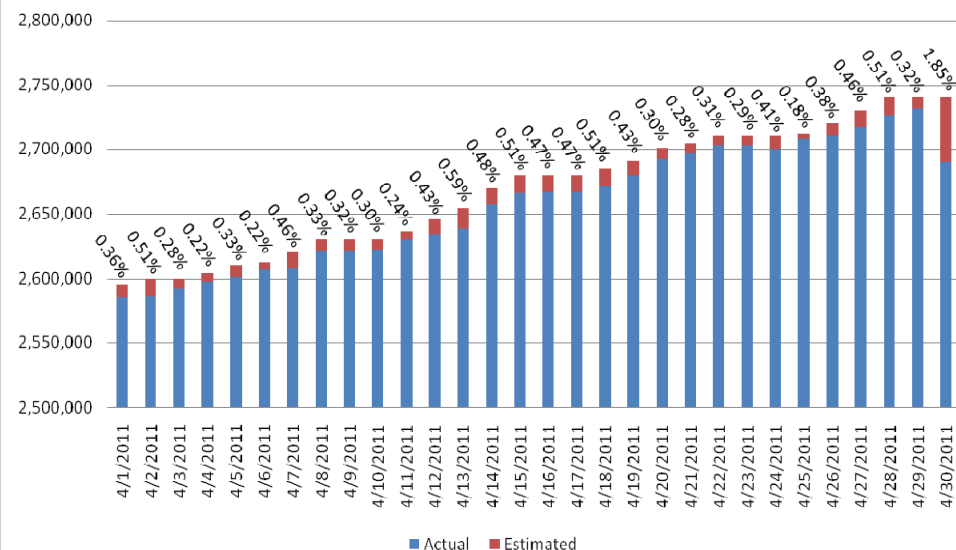
AMS ESI IDs in Settlement



Now settling nearly 2.75M ESIIDs with Advanced Meter Data

Typically over 99% of actual AMS data is available for initial settlement.

**AMS ESI IDs in Initial Settlement
April 2011**



Settlements and Billing Performance Measures – April 2011

April 2011 numbers will be provided prior to Board meeting

April 2011 Market Total Settlement Dollars

April 2011 numbers will be provided prior to Board meeting

Reliability Services

April 2011 numbers will be provided prior to Board meeting

Capacity Services - Cost

April 2011 numbers will be provided prior to Board meeting

Capacity Services - Volumes

April 2011 numbers will be provided prior to Board meeting

Energy Settlement

April 2011 numbers will be provided prior to Board meeting

Congestion Management

April 2011 numbers will be provided prior to Board meeting

Net Impact to Load

April 2011 numbers will be provided prior to Board meeting

Revenue Neutrality

April 2011 numbers will be provided prior to Board meeting

Market Based Fees

April 2011 numbers will be provided prior to Board meeting

Daily DAM and RTM Activity

April 2011 numbers will be provided prior to Board meeting

Verifiable Costs

April 2011 numbers will be provided prior to Board meeting

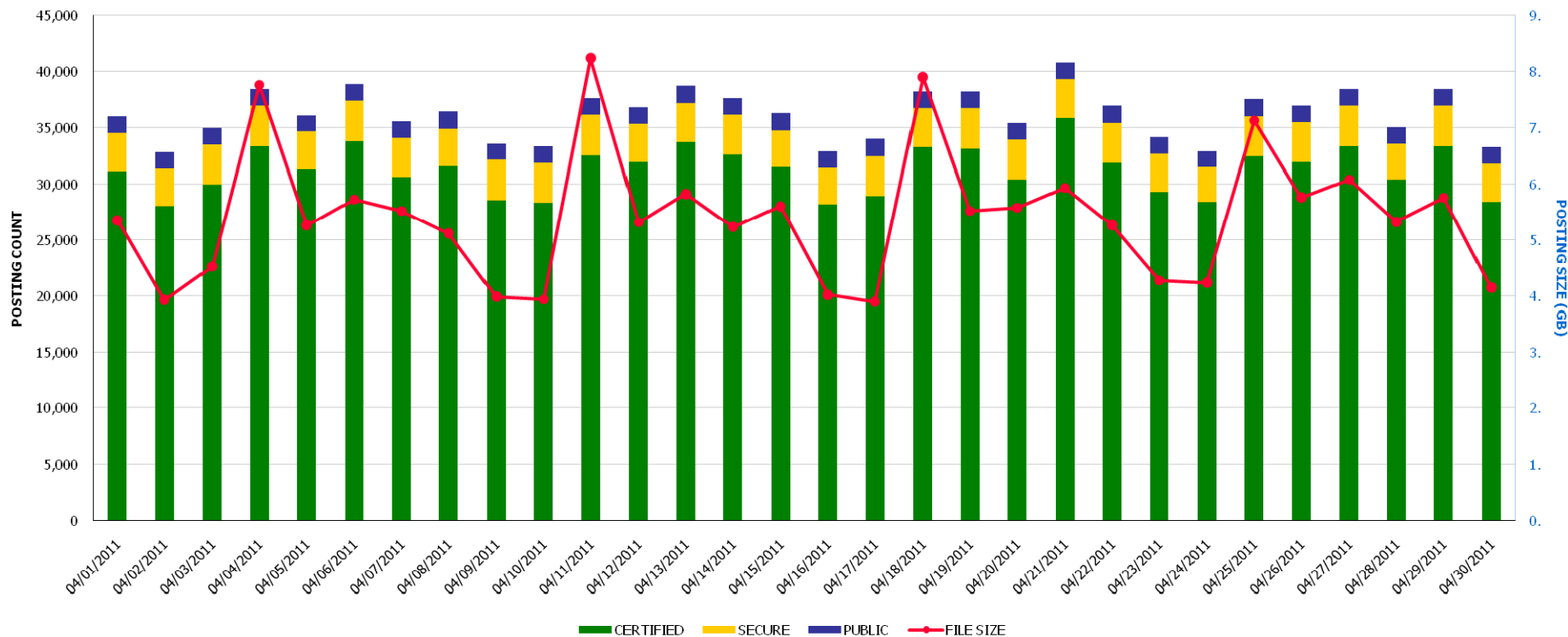
Extract & Report Postings

Market Extract & Report Postings

Run on May 4, 2011 3:08:41 AM

Start Date: April 1, 2011

End Date: April 30, 2011



TOTAL POSTINGS	TOTAL FILE SIZE (GB)
1,087,095	162.3

Posting Classifications:

Certified = Available only to the Market Participant owning that data

Secure = Available to any Market Participant with a digital certificate

Public = Available to all Market Participants & general public (via ERCOT.com)



May 17, 2011

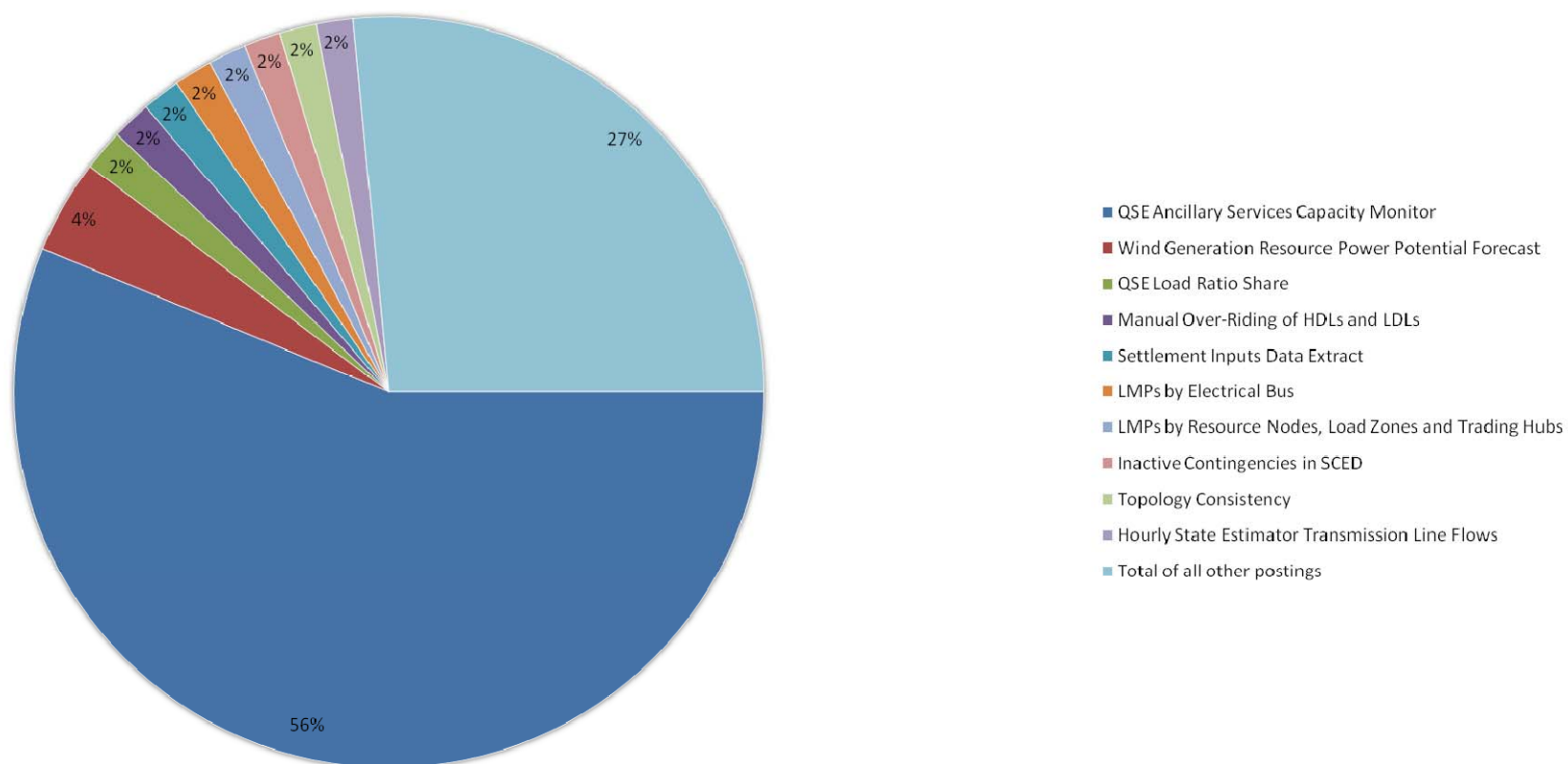
Extract & Report Postings

Top 10 Market Extract & Report Postings

Run on May 4, 2011 9:44:14 AM

Start Date: April 1, 2011
End Date: April 30, 2011

Publish Count

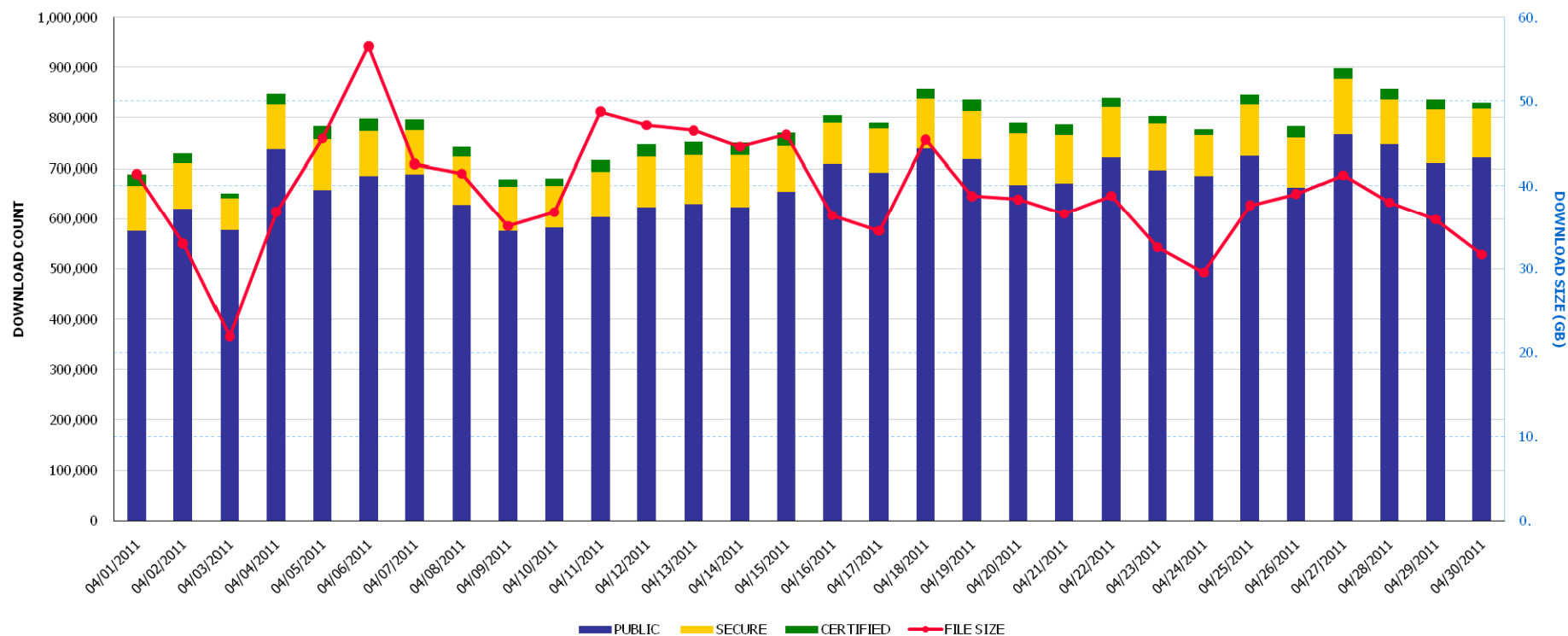


Extract & Report Downloads

Market Extract & Report Downloads

Run on May 4, 2011 3:00:10 AM

Start Date: April 1, 2011
End Date: April 30, 2011



TOTAL DOWNLOADS	TOTAL FILE SIZE (GB)
23,462,233	1,178.39

Posting Classifications:

Certified = Available only to the Market Participant owning that data
 Secure = Available to any Market Participant with a digital certificate
 Public = Available to all Market Participants & general public (via ERCOT.com)



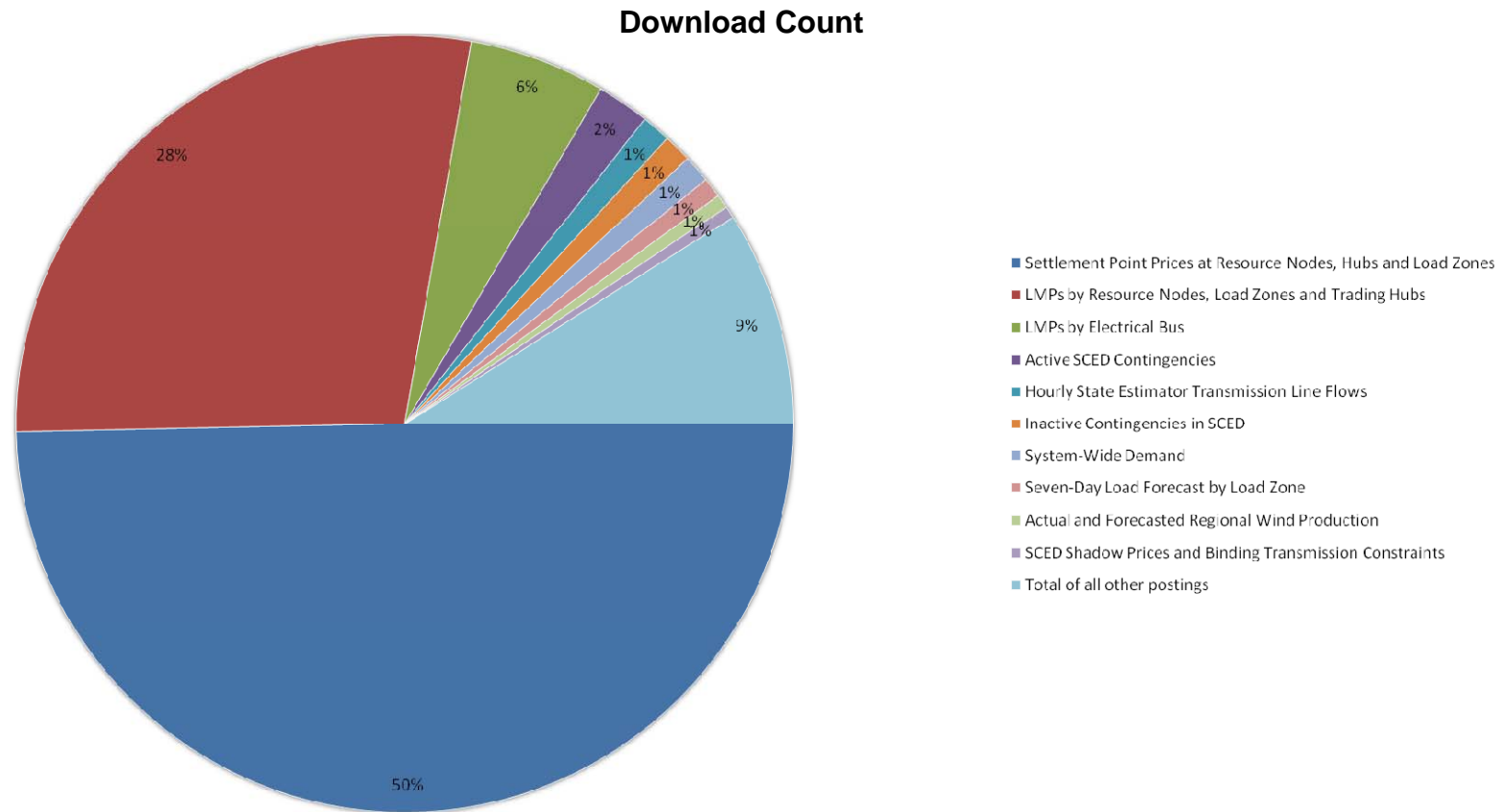
May 17, 2011

Extract & Report Downloads

Top 10 Market Extract & Report Downloads

Run on May 4, 2011 9:37:38 AM

Start Date: April 1, 2011
End Date: April 30, 2011



ERCOT Wholesale Market Settlement Dispute Report

April 2011

	CRR Market		Day-Ahead Mkt		Real Time Mkt	
	Current Month*	Since Dec 1, 2010	Current Month*	Since Dec 1, 2010	Current Month*	Since Dec 1, 2010
Received	2	17	9	56	57	242
Granted	0	1	0	0	39	48
Granted w/Exception	0	0	0	0	2	6
Denied	0	14	7	44	8	74
In Process	0	2	0	12	0	114

*Some current month activity is on disputes that were received in prior months.

REPs and QSEs Added/Terminated – as of April 30, 2011

- **Added REPs**

- ✓ Penstar Power LLC 1 (LSE)
- ✓ Veteran Energy LLC (LSE)

- **Terminated REPs**

- ✓ Lahey and Partners LLC (LSE)

- **Added QSEs**

- ✓ Wolverine Trading LLC (QSE – L2)
- ✓ XO Energy TX LP (QSE – L1)
- ✓ Monterey TX LLC (QSE – L1)
- ✓ Sumer Capital Partners (QSE – L1)
- ✓ Scurry County Wind LP (QSE – L3)

- **Terminated QSEs**

- ✓ CBK Group LTD (QSE – L1)

QSE Count	Level	Qualification Description
83	1	<i>Performs Inter-QSE trades only; no direct representation of Load Serving Entity or Resource Entity</i>
127	2	<i>Represents Load Serving Entity ; no direct representation of Resource Entity</i>
61	3	<i>Represents Load Serving Entity and/or Resource Entity without providing Ancillary Services</i>
53	4	<i>Represents Load Serving Entity and/or Resource Entity and provide Ancillary Services</i>
324 total (includes Sub-QSEs)		

Questions?