

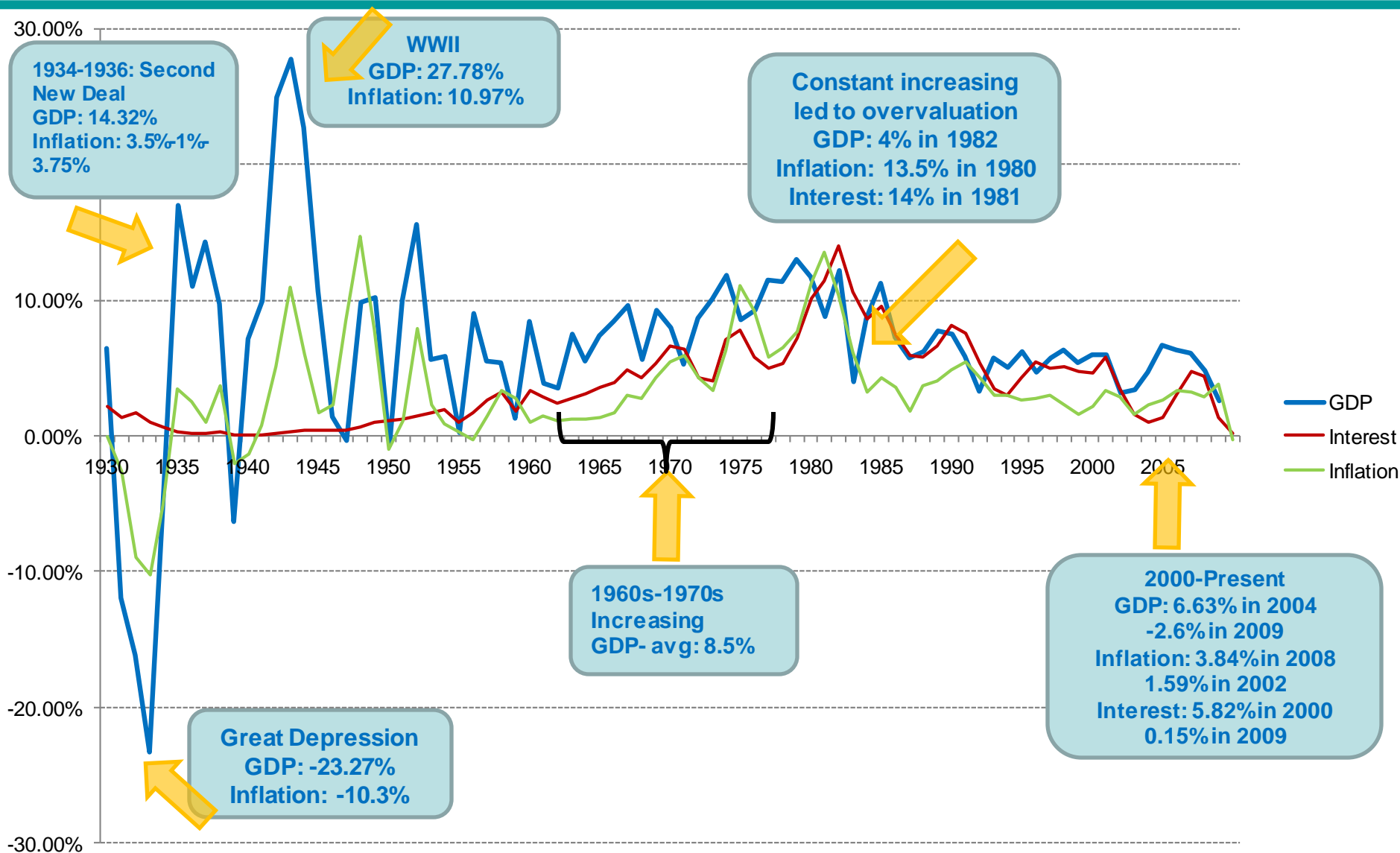


History Re-Cap

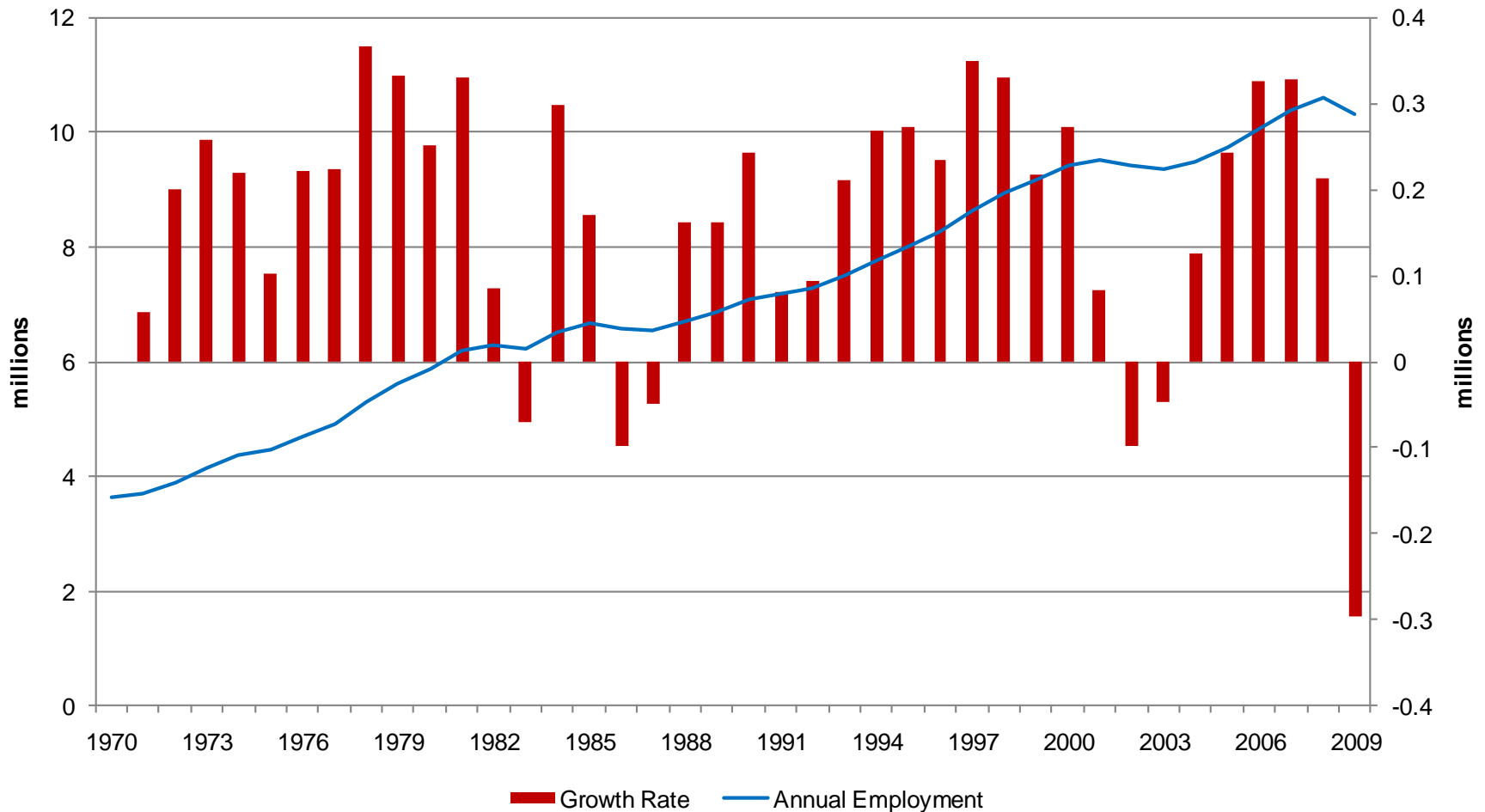
Jenell Katheiser
Economist-Planning Analyst

September 10, 2010

US Economic Indicators: GDP Growth, Interest Rate & Inflation



Texas Non-Farm Employment



Job Changes: 1970-1979: 1.98 million added
1980-1989: 990,000 added

1990-1999: 2.05 million added
2000-2009: 880,000 added