



# Monthly Financial Review

Steve Byone

# Monthly Financial Review - July 2009 Performance

## Nodal Program

### Approved Forecast to Actual Comparison

Month of July 2009

Line	Cost Summary	Forecast	Actual	Forecast Cumulative	
				Forecast Variance	Variance <i>(Pending Contingency Mgmt Disposition)</i>
1	Internal Labor Costs	\$2.1	\$2.1	\$0.0	\$3.6
2	Backfill Labor Costs	0.1	0.1	0.0	-0.2
3	External Resource Costs	5.4	4.0	1.4	10.2
4	Software & Software Maintenance	1.8	0.3	1.5	0.9
5	Hardware & Hardware Maintenance	0.4	0.1	0.3	2.0
6	Other	0.0	0.0	0.0	0.4
7	<b>Sub-total Direct Project Costs</b>	<b>\$9.8</b>	<b>\$6.6</b>	<b>\$3.2</b>	<b>\$16.9</b>
8	<b>Contingency Costs</b>	<b>\$0.0</b>	<b>\$0.0</b>	<b>\$0.0</b>	<b>\$0.0</b>
9	Allocations	\$0.4	\$0.3	\$0.1	\$1.6
10	Finance Charges	0.9	1.0	-0.1	0.9
11	<b>Sub-total Indirect Project Costs</b>	<b>\$1.3</b>	<b>\$1.3</b>	<b>\$0.0</b>	<b>\$2.5</b>
12					
13	<b>Total</b>	<b>\$11.1</b>	<b>\$7.9</b>	<b>\$3.2</b>	<b>\$19.4</b>

Amounts in millions

# Monthly Financial Review

## LTD Performance through July 2009

### Nodal Program

#### Approved Forecast to Actual Comparison

#### Life-to-Date through July 2009

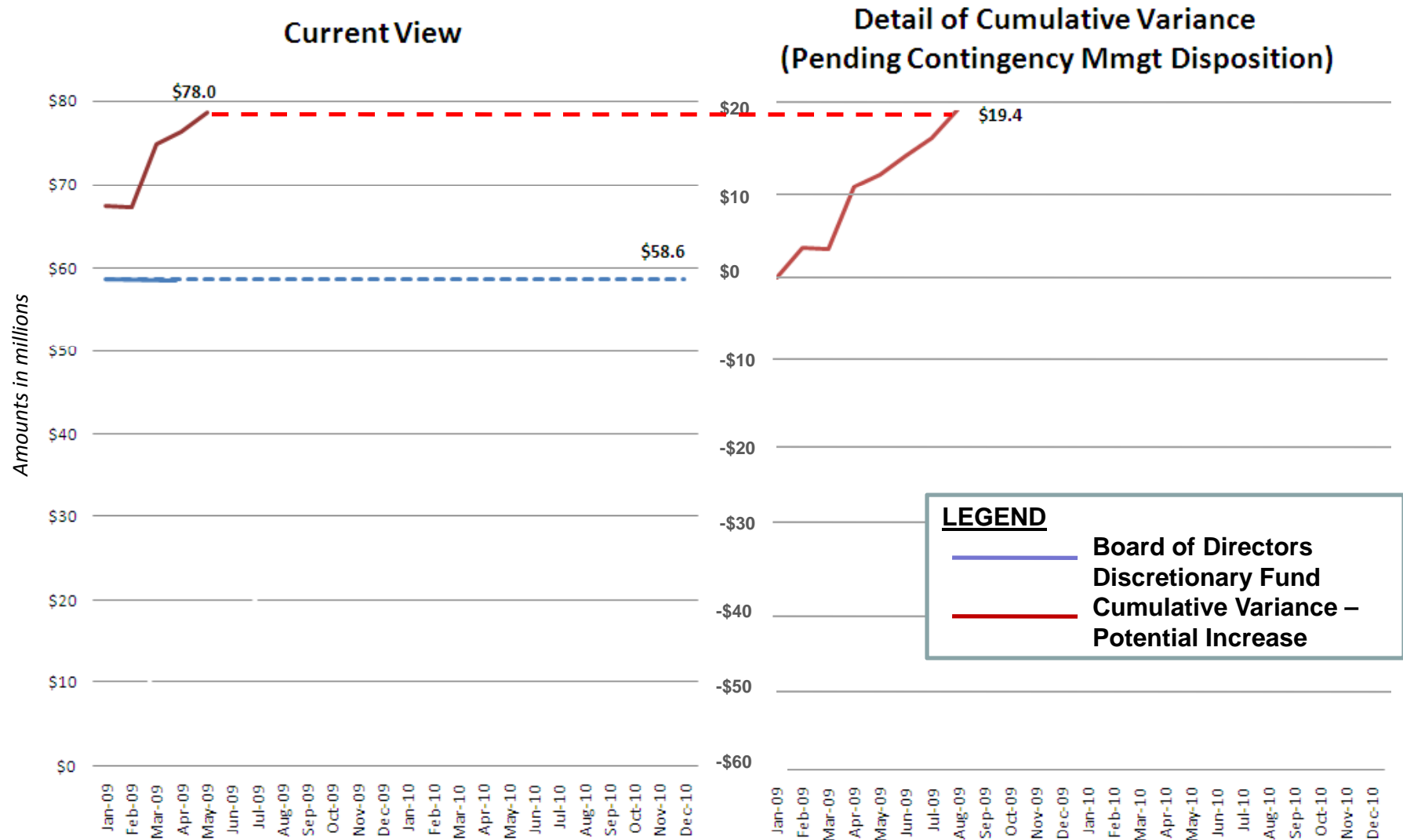
Line	Cost Summary	Forecast	Actual	Forecast Cumulative Variance (June/July)	Forecast Remaining
1	Internal Labor Costs	\$45.3	\$45.2	\$0.1	\$39.1
2	Backfill Labor Costs	4.8	4.8	0.0	2.9
3	External Resource Costs	235.4	233.5	1.9	53.7
4	Software & Software Maintenance	27.4	26.0	1.4	10.7
5	Hardware & Hardware Maintenance	47.7	47.7	0.0	8.3
6	Other	2.2	1.9	0.3	0.7
7	<b>Sub-total Direct Project Costs</b>	<b>\$362.8</b>	<b>\$359.1</b>	<b>\$3.7</b>	<b>\$115.4</b>
8	<b>Contingency Costs</b>	<b>\$0.0</b>	<b>\$0.0</b>	<b>\$0.0</b>	<b>\$58.6</b>
9	Allocations	\$18.1	\$18.2	-\$0.1	
10	Finance Charges	19.6	19.7	-\$0.1	
11	<b>Sub-total Indirect Project Costs</b>	<b>\$37.7</b>	<b>\$37.9</b>	<b>-\$0.2</b>	
12					
13	<b>Total</b>	<b>\$400.5</b>	<b>\$397.0</b>	<b>\$3.5</b>	

Amounts in millions

Note 1: "Forecast Remaining" allocations and finance charges will be determined upon final program EAC.

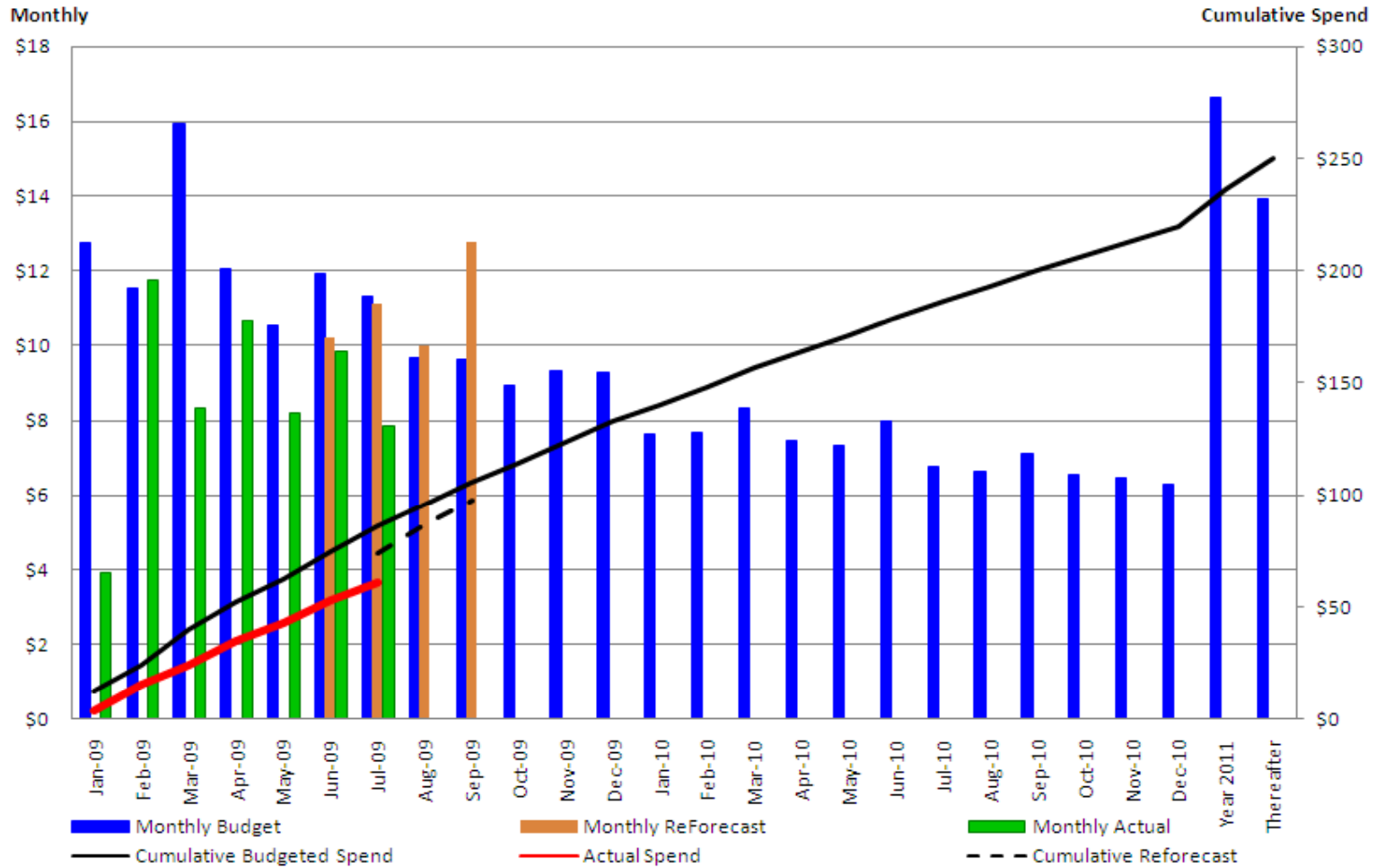
Note 2: "July/June Forecast Cumulative Variance" consists of actuals through May 2009 and forecast for June and July

# Board Discretionary Fund



# Program Cost Management

## Monthly Budget, Forecast and Actual Analysis (Amounts in millions)



Footnote: Reforecast as of June 26, 2009

Questions ?