



Grid Operations and Planning Report

Kent Saathoff

ERCOT Board of Directors
April 20, 2010

Content

- **Summary**
- **March 2010 Operations**
 - Peak Demand: Actual vs. Forecast
 - On-line Resources: Total at Peak and Wind
 - Day-Ahead Load Forecast Performance
 - Out of Merit Capacity Order (OOMC) & Replacement Reserve (RPRS) Purchases
 - Zonal Congestion
 - Significant System Incidents
 - Advisories, Watches and EEAs
 - Other Items
- **Planning Activities**
 - Summary
 - Generation Interconnection Requests
 - Wind Capacity

Summary

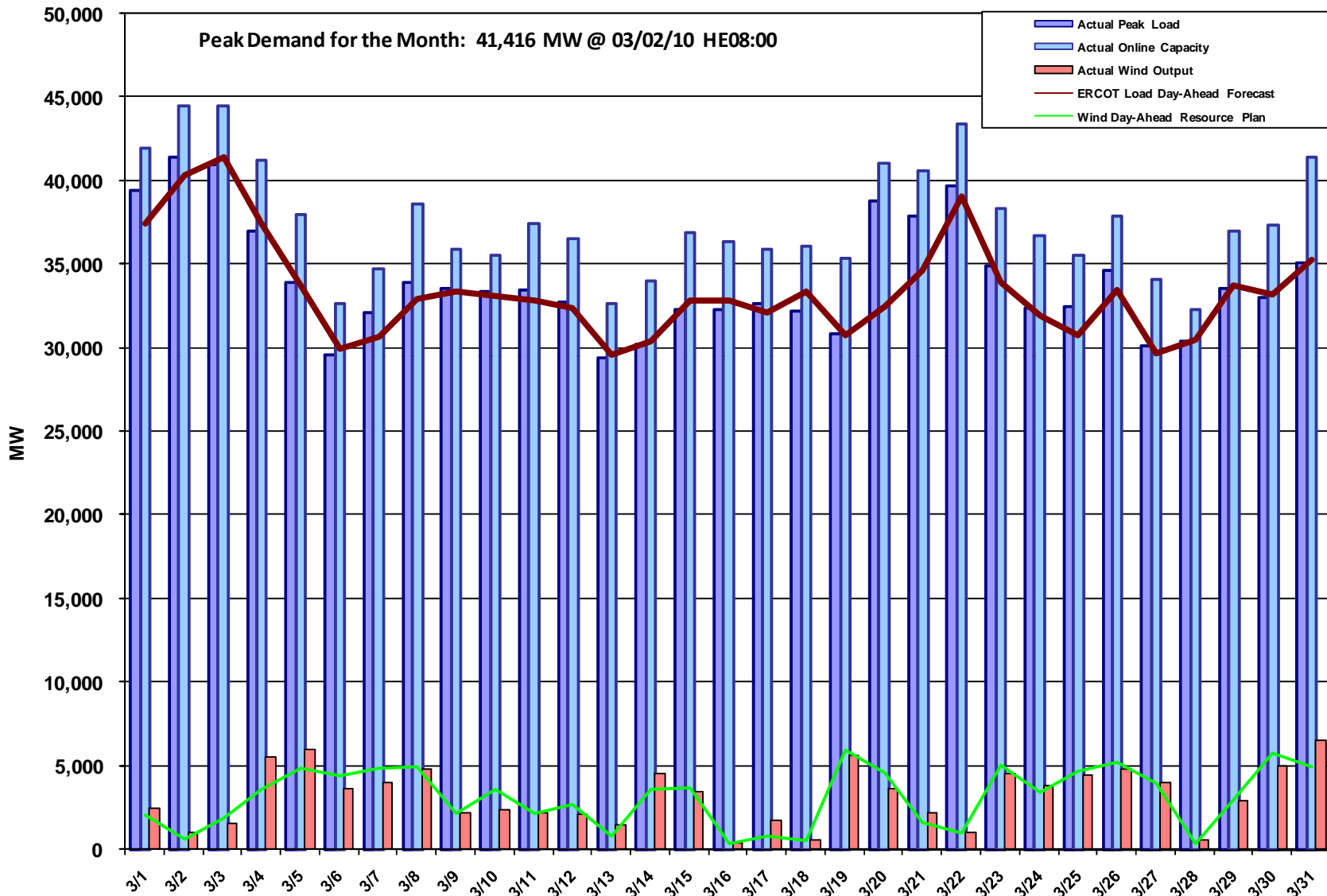
- **March 2010 Operations**

- The peak demand of 41,416 MW on March 2nd was less than the long term forecast peak of 41,448 MW but more than the March 2009 actual peak demand of 40,289 MW.
- Day-ahead load forecast error for March was 2.74%.
- Advisories for Adjusted Responsive Reserve (ARR) below 3000 MW issued 10 days
- No Watches for ARR under 2500 MW
- No Energy Emergency Alert (EEA) events
- One Transmission Watch issued

- **220 active generation interconnect requests totaling over 73,000 MW as of March 31, 2010. One request more than February 28, 2010**

- **9,117 MW wind capacity on line March 31, 2010. Increase of 201 MW from February.**

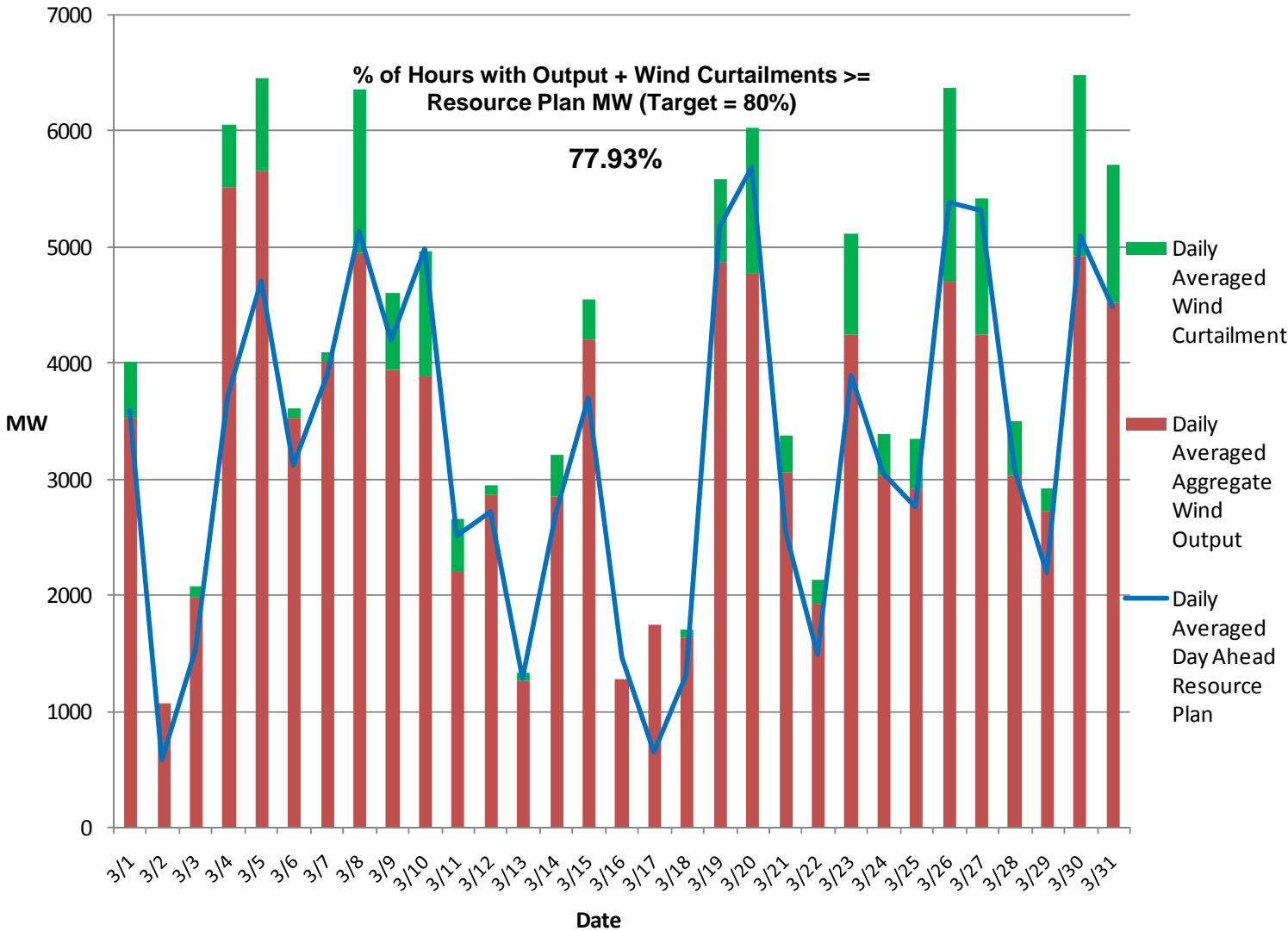
March 2010 Daily Peak Demand: Hourly Average Actual vs. Forecast, Resource Plan & On-line Capacity at Peak



Note: All data are hourly averages during the peak load hour obtained from Resource Plans, and EMMS.



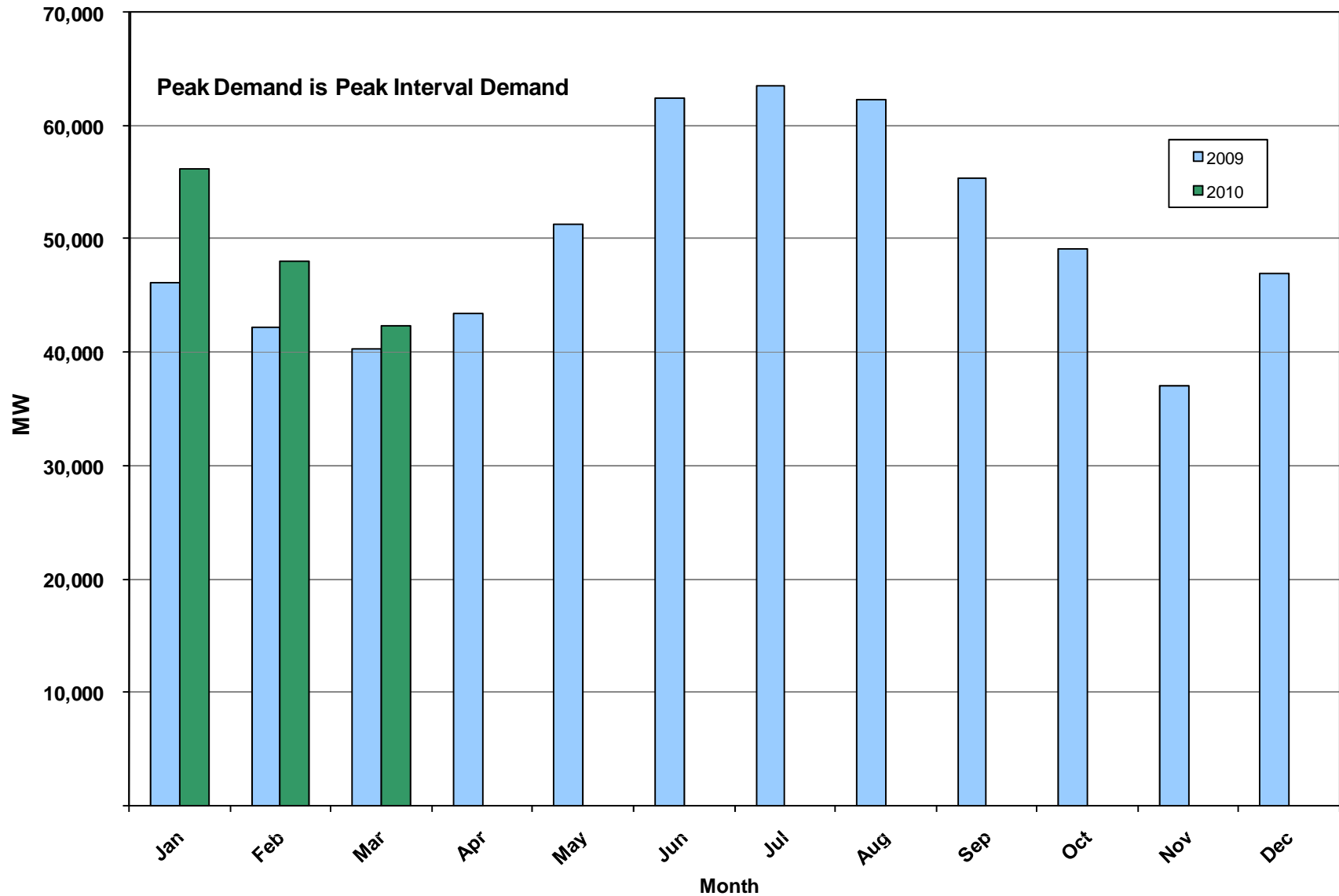
March 2010: Actual Wind Output w/ Curtailment Added Back Vs Wind Day-Ahead Resource Plan Based on AWS Forecast for All Hours



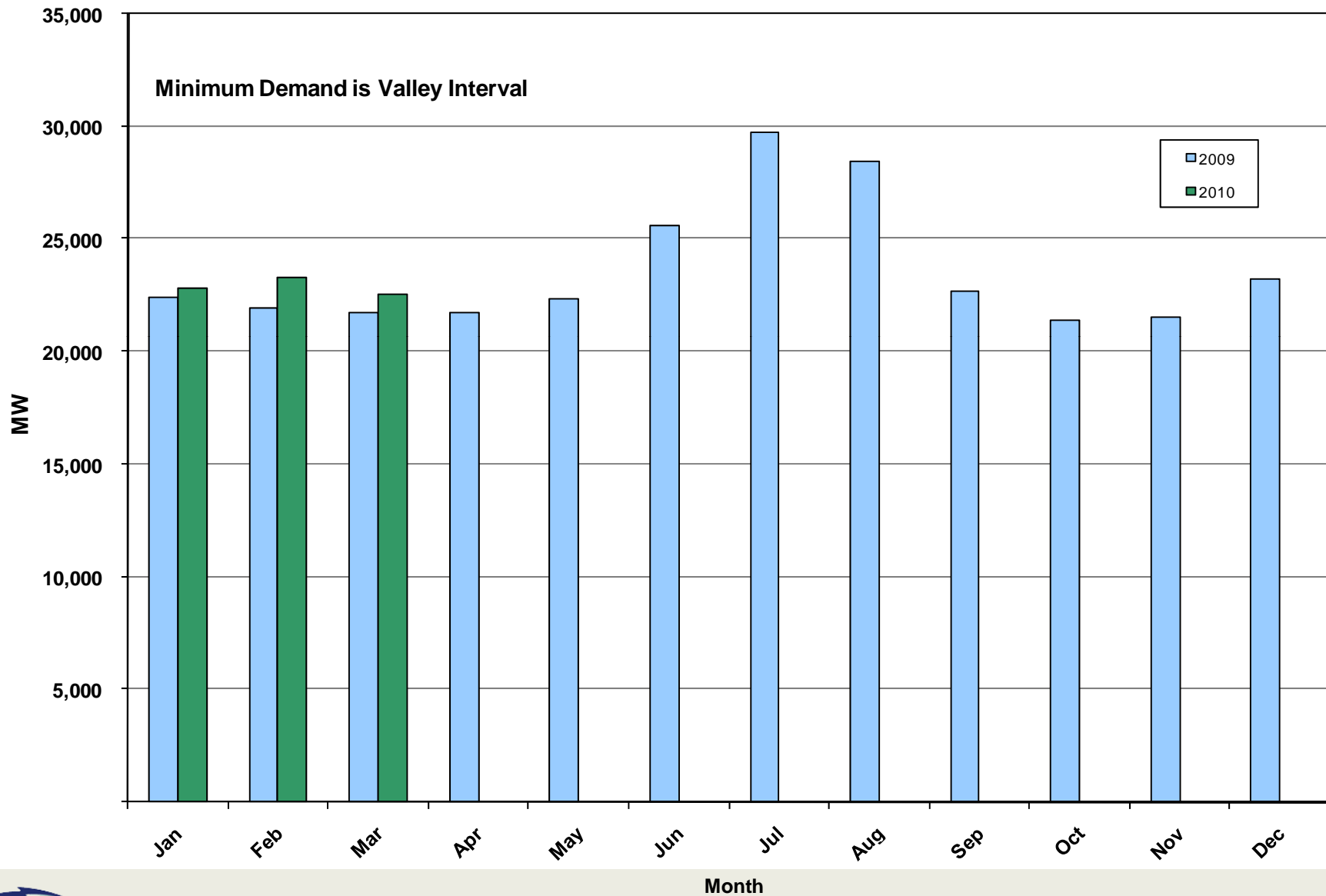
Note: QSEs must use AWST 80% probability of exceedence forecast for Day-Ahead Resource Plans

20 April 2010

March 2010: Monthly Peak Demand: Actual



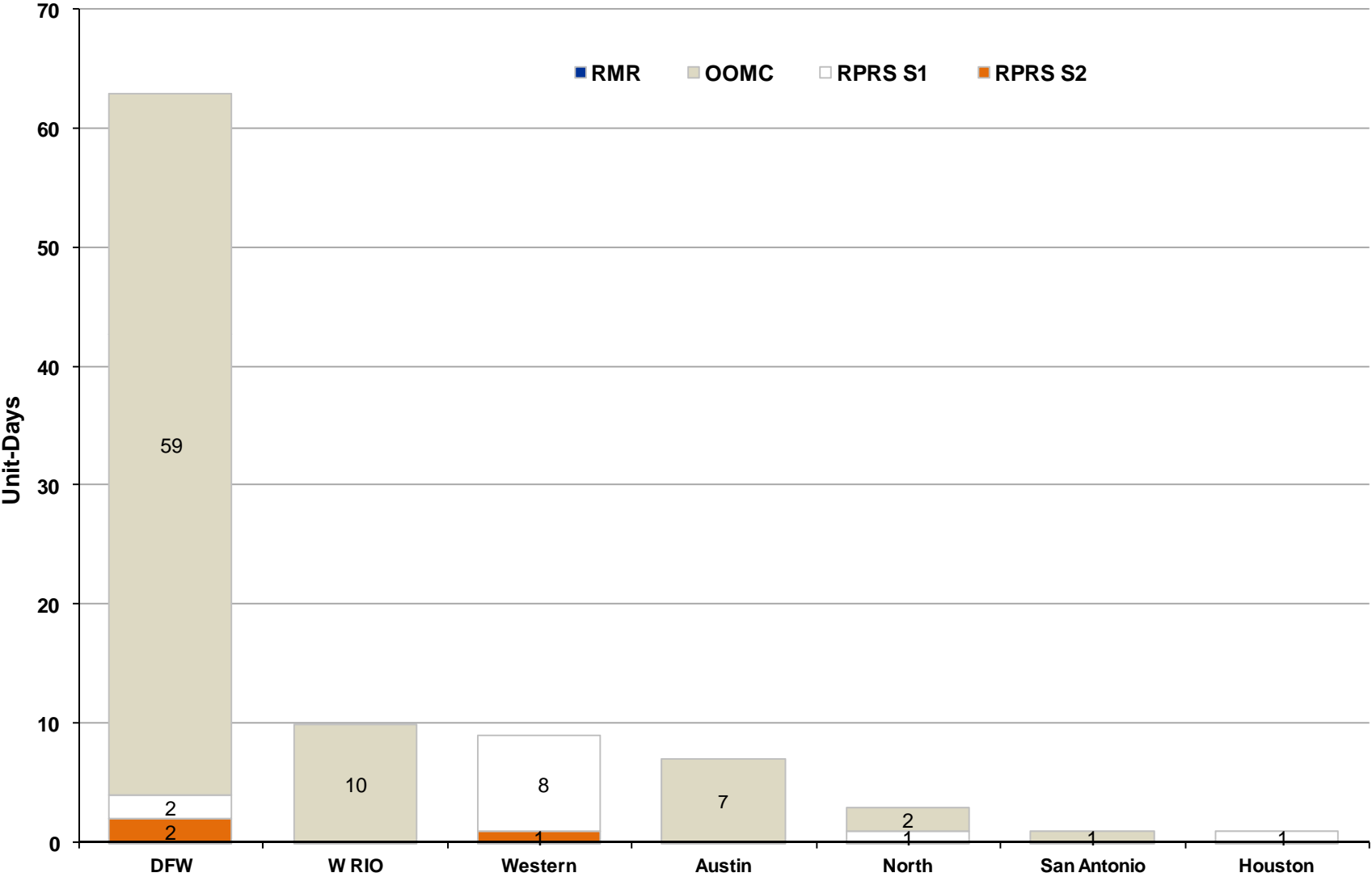
March 2010: Monthly Minimum Demand: Actual



Day-Ahead Load Forecast Performance in March 2010

	Mean Absolute Percent Error (MAPE) for ERCOT Mid-Term Load Forecast (MTLF) Run at 16:00 Day Ahead				
	2007 MAPE	2008 MAPE	2009 MAPE	2010 MAPE (YTD)	March 2010 MAPE
Average Annual MAPE	3.55	3.30	3.11	3.27	2.24

Capacity Purchases of RMR, OOMC & RPRS to Manage Local Congestion in March 2010



Zonal Congestion

CSC	March 09 Days	Jan 10 Days	Feb 10 Days	March10 Days	Last 12 Months Total Days (March 09 – March 10)
North – Houston	9	1	0	0	52
North – West	2	0	0	0	2
West – North	13	13	12	24 Mar-1, 3-15,18-20, 22, 26-31	155
South – North	3	0	0	0	9
North - South	7	1	0	0	38

Significant System Incidents in March 2010

- **March 20th**
 - Simultaneous loss of five wind units, two auto transformers and one 345 kV line. Line under construction fell into energized line due to high winds
- **March 24th**
 - Simultaneous loss of five wind units, two auto transformers and one 345 kV line. Thunderstorms in area. Still under investigation.
- **March 31st**
 - ERCOT lost connection to the Market Management System (MMS). Held interval ending 00:30 balancing energy deployment and resumed with interval ending 01:30 deployment.

Advisories and Watches in March 2010

- **Advisories issued for Adjusted Responsive Reserve (ARR) below 3000 MW.**
 - Issued 10 Days.
- **Watches issued for Adjusted Responsive Reserve (ARR) below 2500 MW.**
 - None
- **Transmission Watches**
 - March 31st ERCOT issued a Transmission Watch issued due to the forced outage at Gails substation. Implemented Block Load Transfer up to 2 MW from ERCOT (Gails substation) to SPP (Draw substation).
- **No EEA's in March 2010**

Other Items

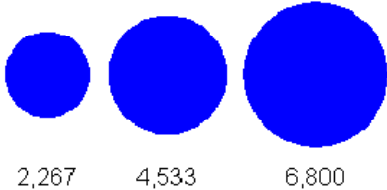
- **March 19th**
 - Held Real-Time Balancing Market for interval ending 20:00 due to incorrect offset value entered. Resumed with interval ending 20:30 deployments.
- **March 20th**
 - Held Real-Time Balancing Market for interval ending 23:00 due to 23:15 deployments going out late. Resumed with interval ending 23:30 deployments.
- **March 27th**
 - Held Real-Time Balancing Market for interval ending 20:15 due to incorrect offset value entered. Resumed with interval ending 20:45 deployments.

Planning Summary

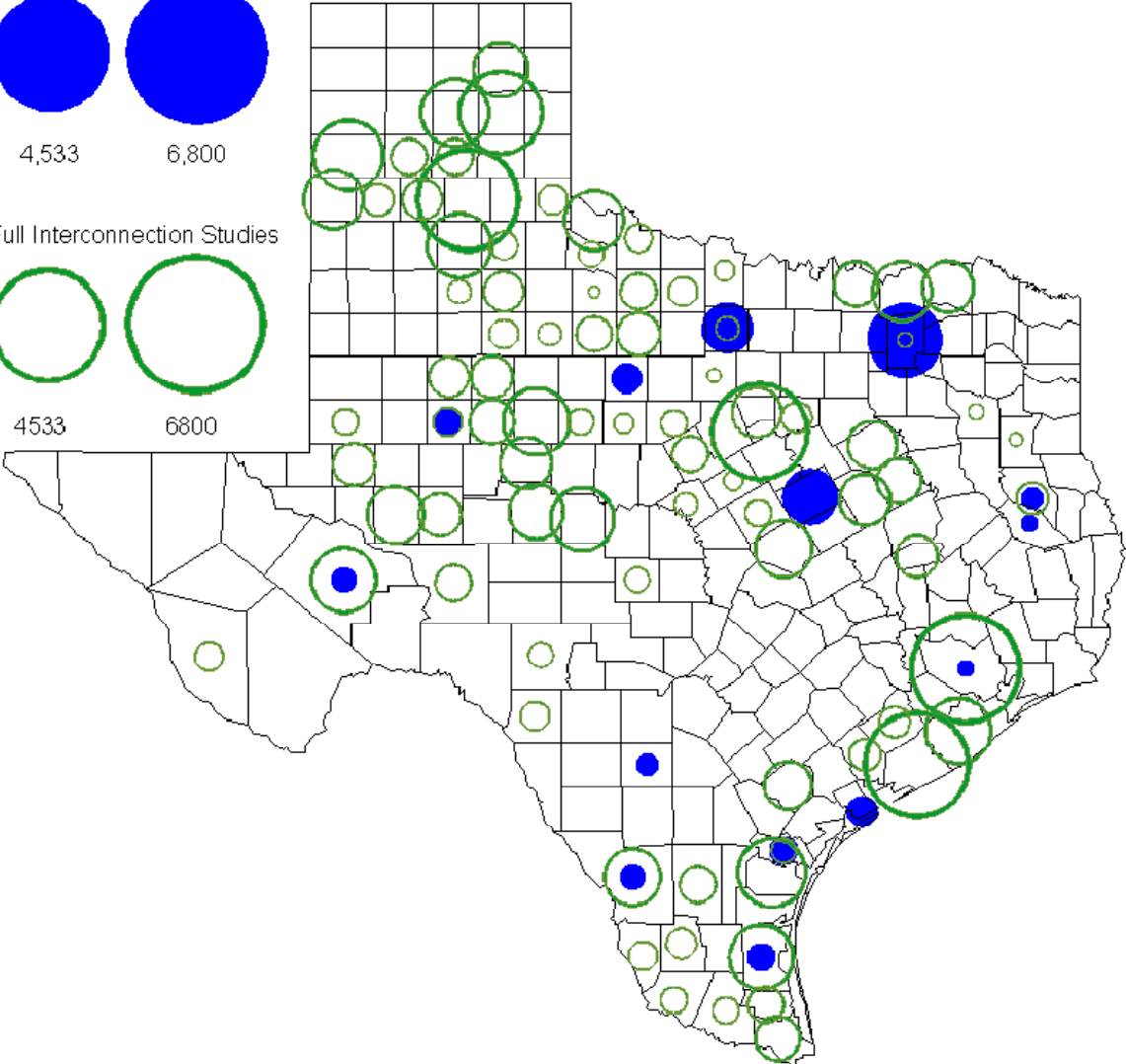
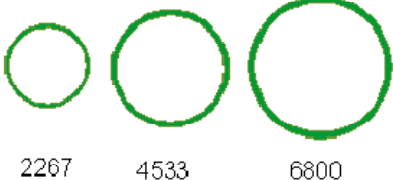
- **ERCOT is currently tracking 220 active generation interconnection requests totaling over 73,000 MW. This includes almost 45,000 MW of wind generation.**
- **Regional Planning is currently reviewing proposed transmission improvements with a total of \$798.0 Million**
- **Transmission Projects approved in 2010 total \$0 Million**
- **All projects (in engineering, routing, licensing and construction) total approximately \$9.6 Billion**
- **Transmission Projects energized in 2009 total about \$762 million**
- **Transmission Projects energized in 2010 total about \$41.3 million**

County Location of Planned Generation with Interconnection Requests (all fuels) March 2010

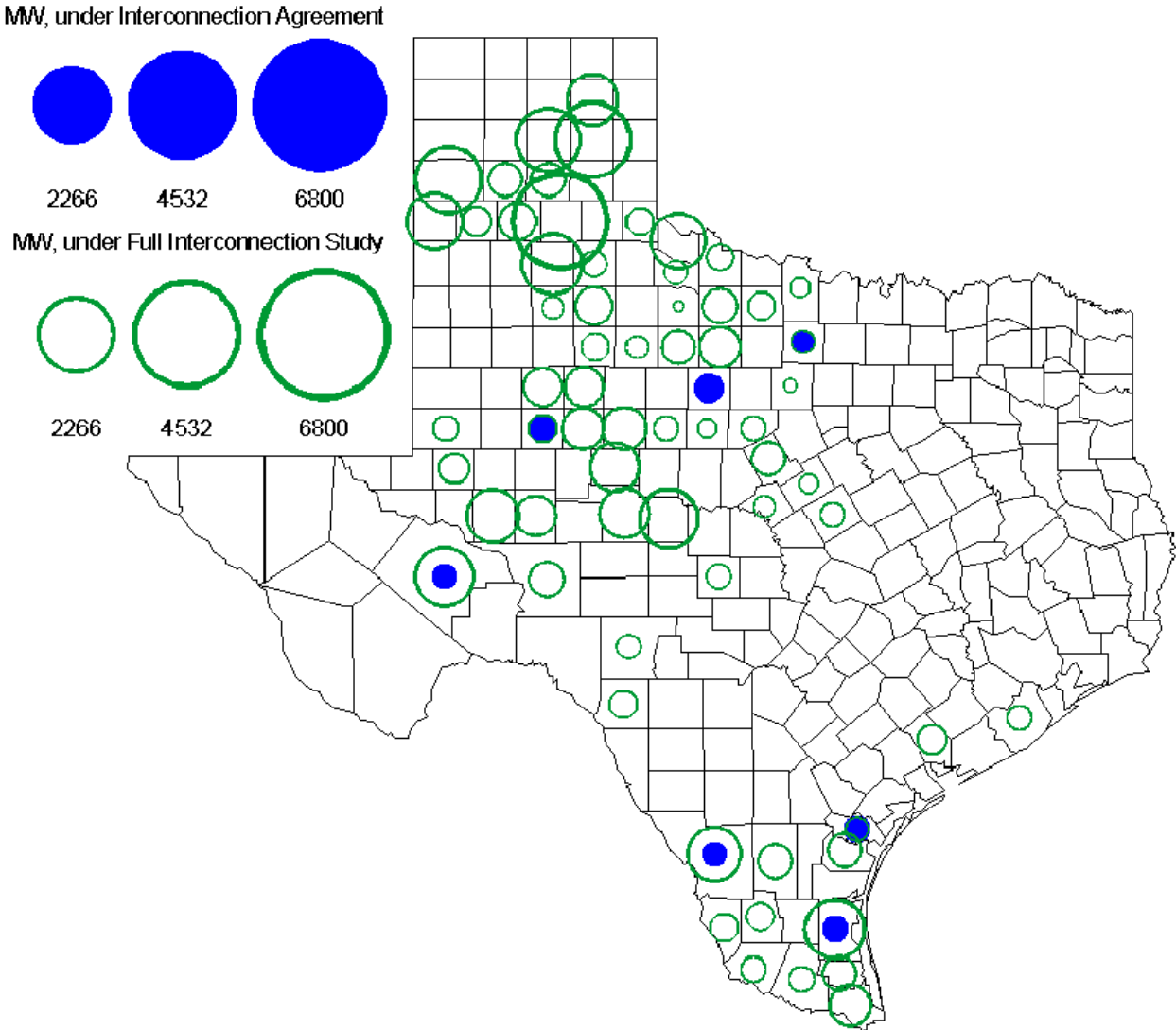
MW under Interconnection Agreements



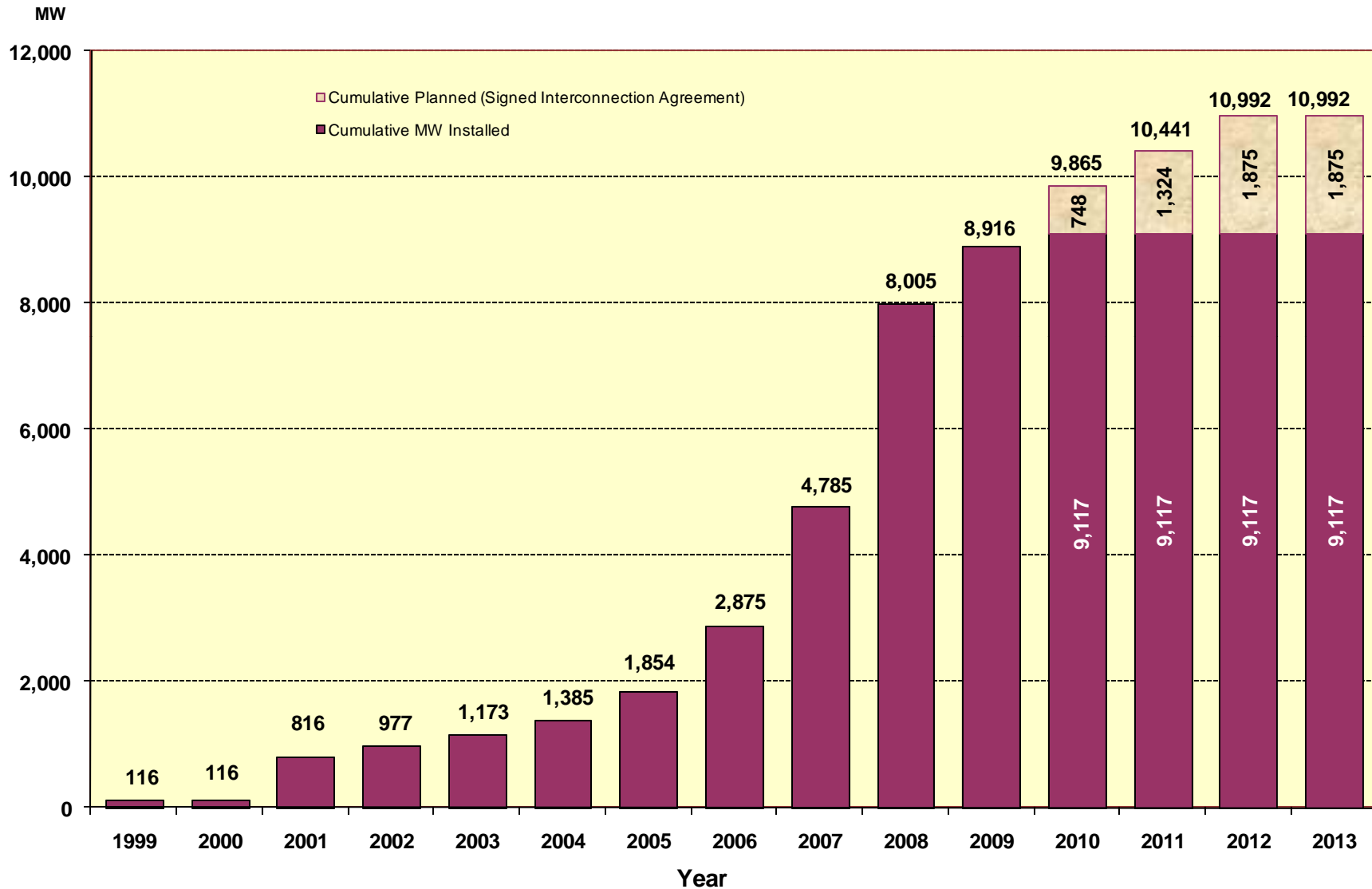
MW under Full Interconnection Studies



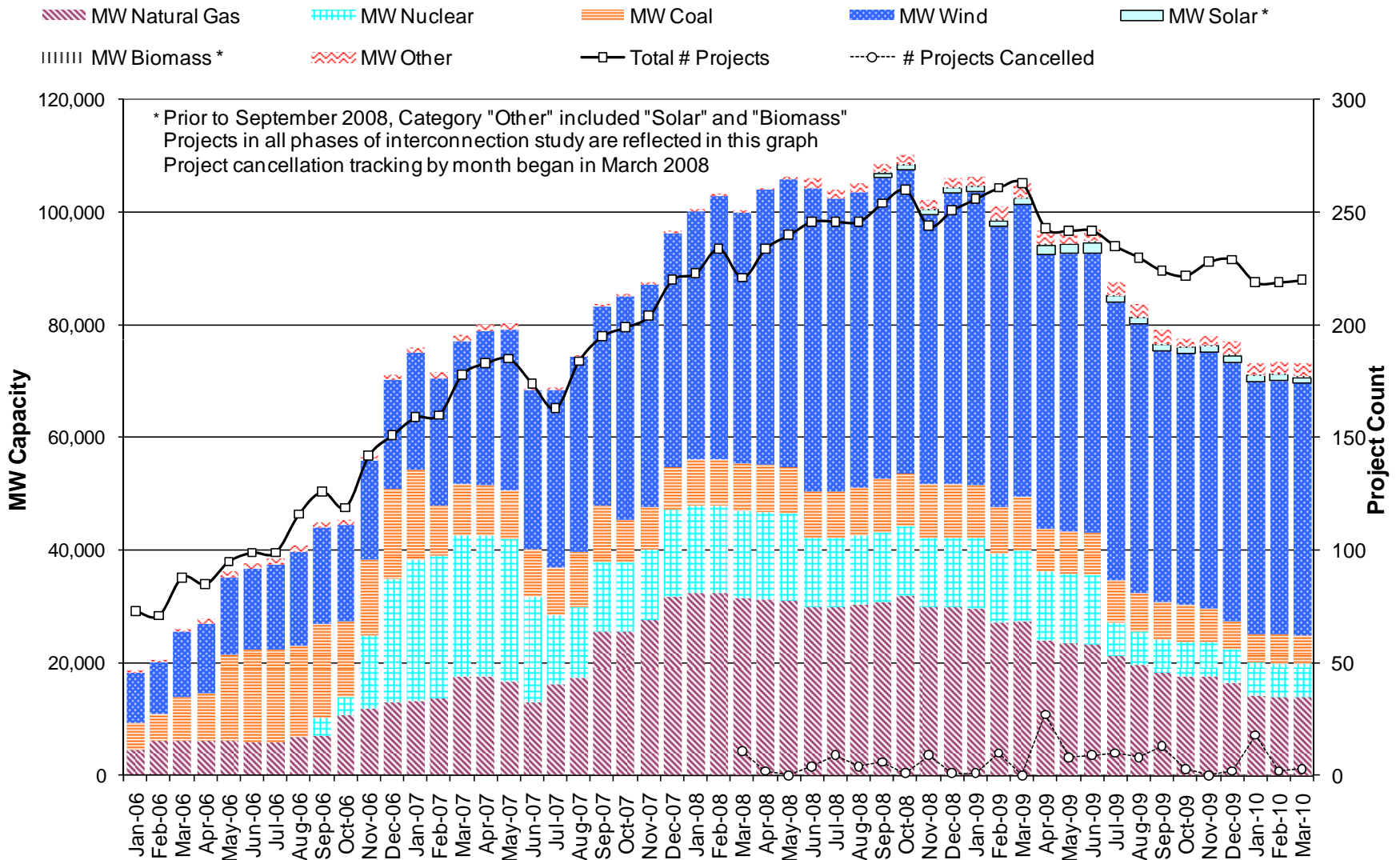
County Location of Planned Generation with Interconnection Requests (Wind) March 2010



Wind Generation



Generation Interconnection Activity by Fuel



Generation Interconnection Activity by Project Phase

