



Grid Operations and Planning Report

Kent Saathoff

ERCOT Board of Directors
February 16, 2010

Content

- **Summary**
- **January 2010 Operations**
 - Peak Demand: Actual vs. Forecast
 - On-line Resources: Total at Peak and Wind
 - Day-Ahead Load Forecast Performance
 - Out of Merit Capacity Order (OOMC) & Replacement Reserve (RPRS) Purchases
 - Zonal Congestion
 - Significant System Incidents
 - Advisories, Watches and EEAs
 - Other Items
- **Planning Activities**
 - Summary
 - Generation Interconnection Requests
 - Wind Capacity

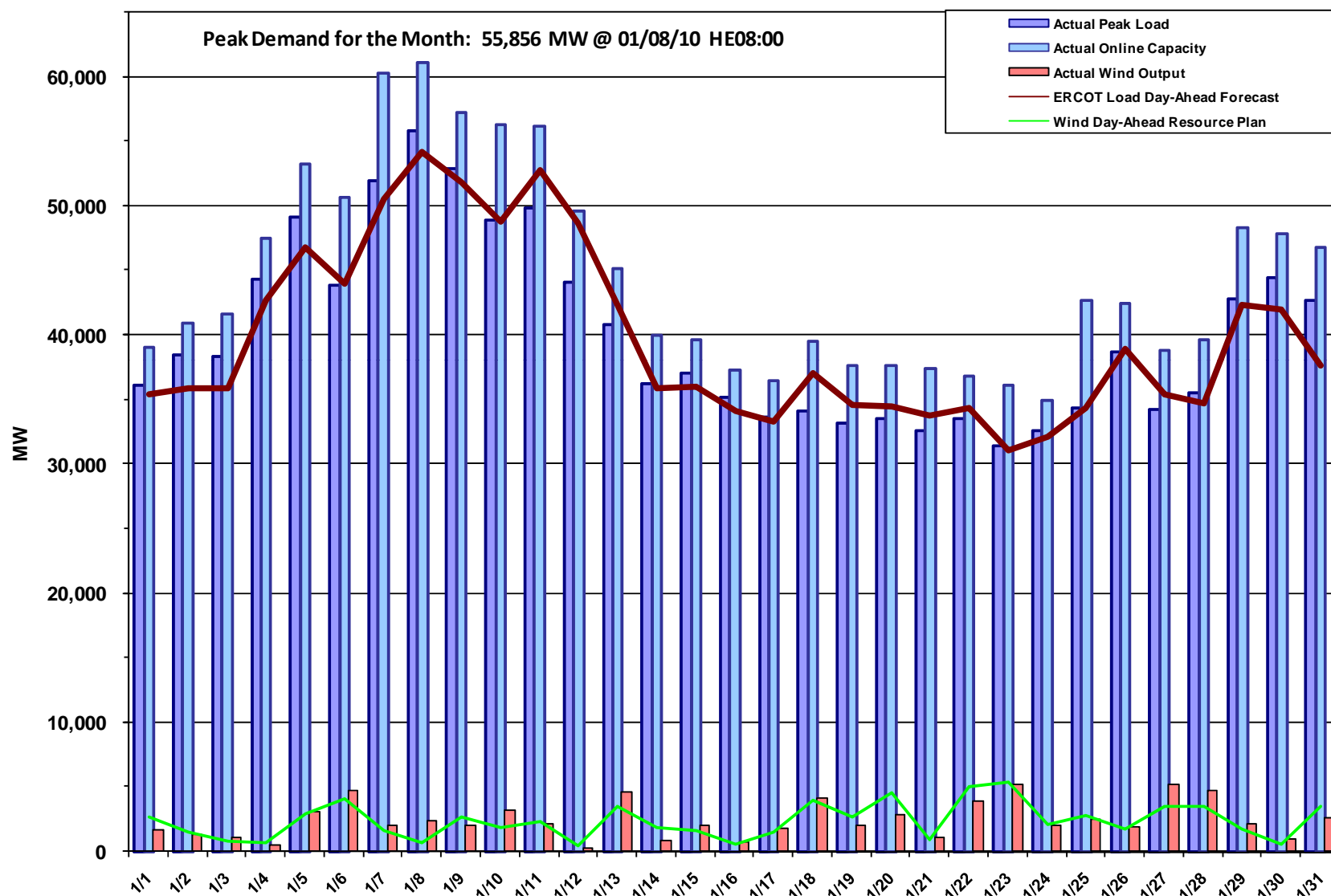
Summary

- **January 2010 Operations**

- The peak demand of 55,856 MW on January 8th was more than the long term forecast peak of 54,237 MW. It was also the all-time high winter peak demand for ERCOT.
- Day-ahead load forecast error for January was 3.78%.
- Advisories for Adjusted Responsive Reserve (ARR) below 3000 MW issued 6 days
- Watches for ARR under 2500 MW issued 1 day
- No Energy Emergency Alert (EEA) events
- Two Transmission Watches issued

- **219 active generation interconnect requests totaling over 73,000 MW as of January 31, 2010. Ten requests fewer and 4,000 MW less than December 31, 2009**
- **8,916 MW wind capacity on line January 31, 2010. No increase from December.**

January 2010 Daily Peak Demand: Hourly Average Actual vs. Forecast, Resource Plan & On-line Capacity at Peak

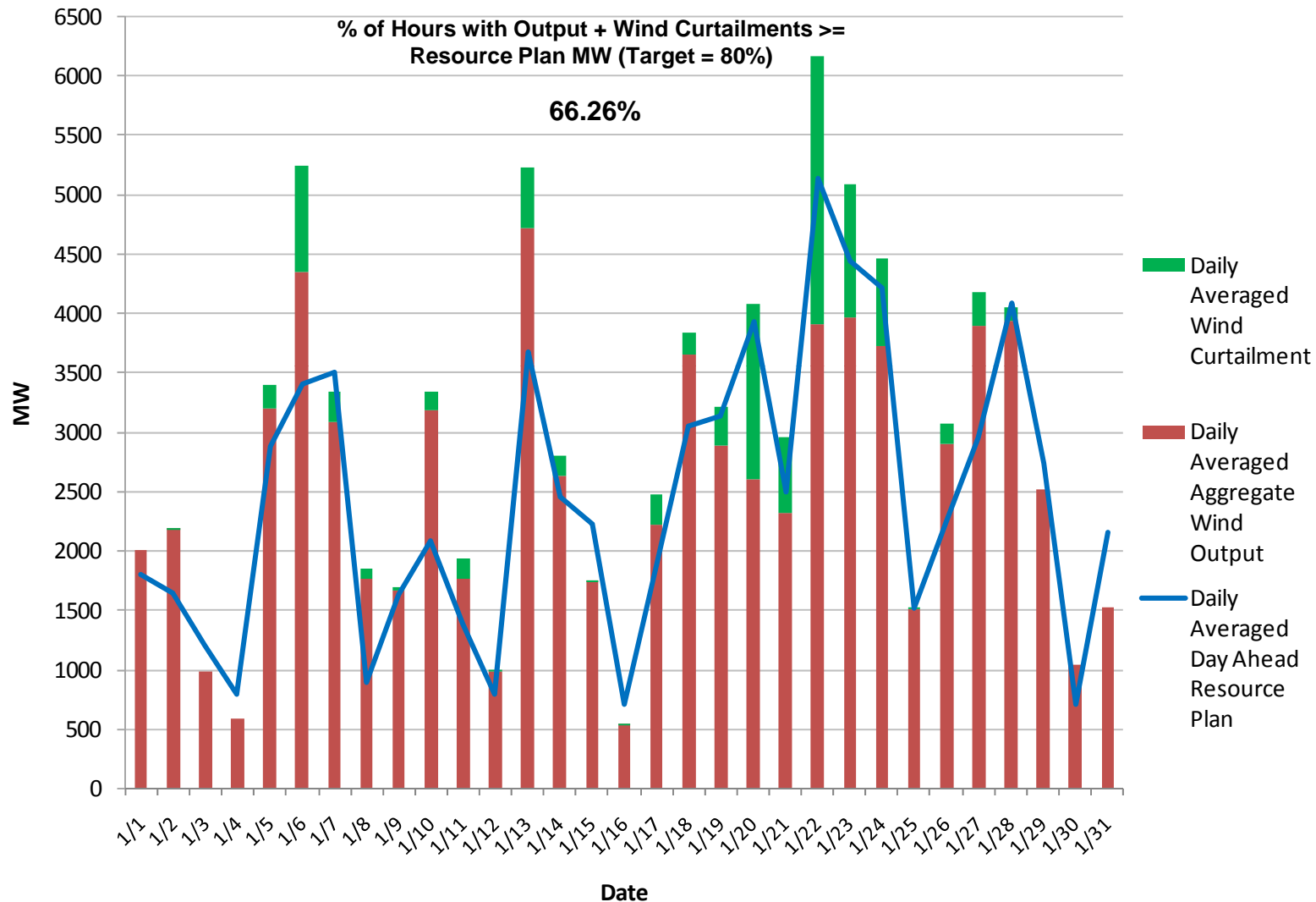


Note: All data are hourly averages during the peak load hour obtained from Resource Plans, and EMMS.

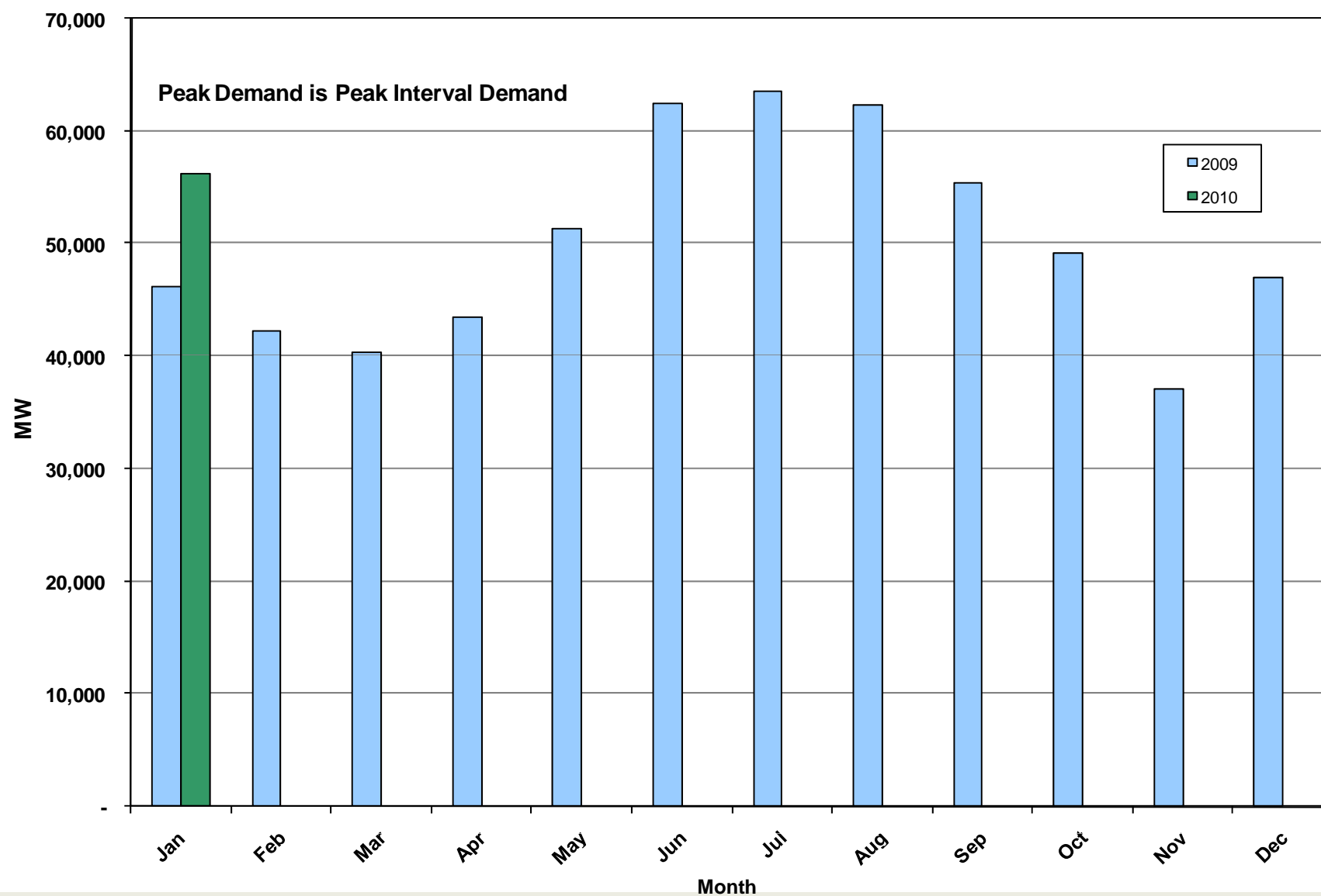


16 February 2010

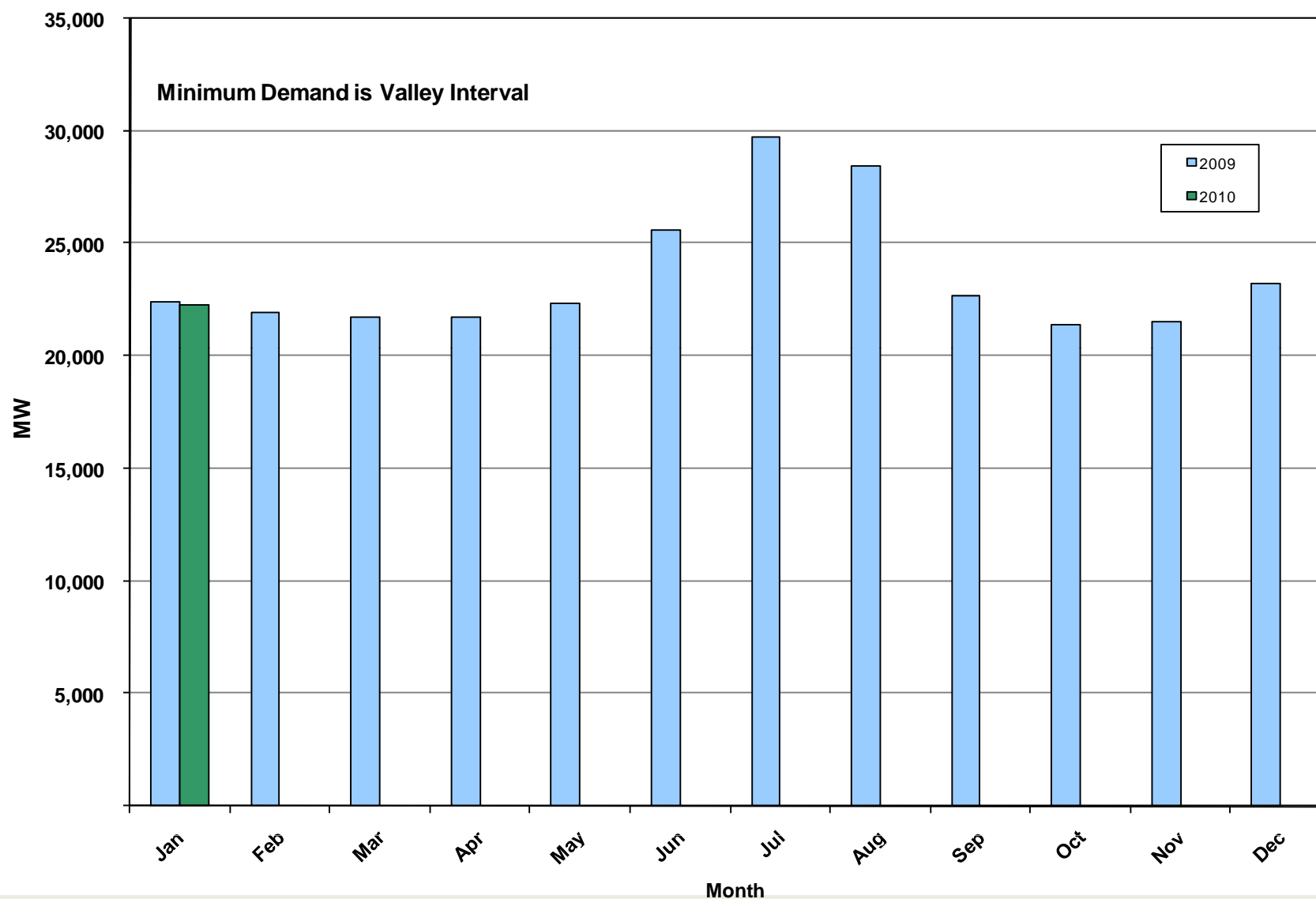
January 2010: Actual Wind Output w/ Curtailment Added Back Vs Wind Day-Ahead Resource Plan Based on AWS Forecast for All Hours



January 2010: Monthly Peak Demand: Actual



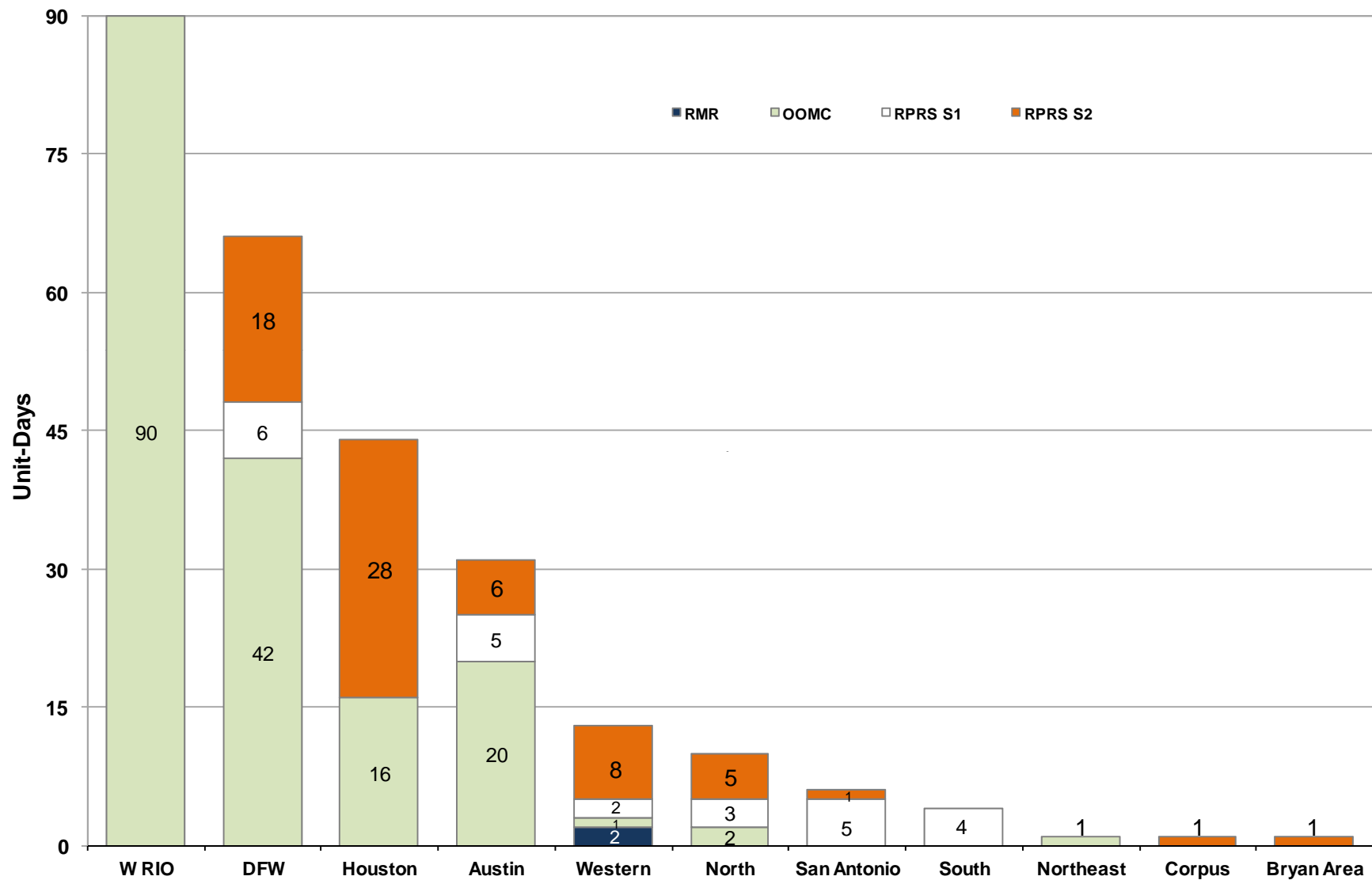
January 2010: Monthly Minimum Demand: Actual



Day-Ahead Load Forecast Performance in January 2010

	Mean Absolute Percent Error (MAPE) for ERCOT Mid-Term Load Forecast (MTLF) Run at 16:00 Day Ahead				
	2007 MAPE	2008 MAPE	2009 MAPE	2010 MAPE (YTD)	January 2010 MAPE
Average Annual MAPE	3.55	3.30	3.11	3.78	3.78

Capacity Purchases of RMR, OOMC & RPRS to Manage Local Congestion in January 2010



Zonal Congestion

CSC	Jan 09 Days	Nov 09 Days	Dec 09 Days	Jan 10 Days	Last 12 Months Total Days (Jan 09 – Jan 10)
North – Houston	0	1	0	1 Jan– 11	52
North – West	0	0	0	0	3
West – North	19	2	9	13 Jan– 5-7, 10, 13, 14, 17, 18, 23, 24, 26-28	152
South – North	1	0	3	0	10
North - South	2	2	1	1 Jan– 9	40

Significant System Incidents in January 2010

- **January 8th**
 - Market Emergency Notice issued for RPRS market delay.
- **January 9th**
 - Emergency Notice for a NERC Reportable Disturbance Control Standard (DCS) Event (discussed at January Board meeting).

Advisories and Watches in January 2010

- **Advisories issued for Adjusted Responsive Reserve (ARR) below 3000 MW.**
 - Issued 6 Days.
- **Watches issued for ARR below 2500 MW.**
 - Issued 1 Day.
- **No EEA's in January 2010**

Advisories and Watches in January 2010

- **Transmission Watches**

- January 8th : Transmission Watch issued due to high load. The loss of Dilley Switch - San Miguel Switch 138KV overloads Derby - Pearsall 69KV. ERCOT received emergency energy from CFE across the Laredo VFT and Eagle Pass DC Ties.
- January 9th : Transmission Watch issued due to high load. The loss of Dilley Switch - San Miguel Switch 138KV overloads Derby - Pearsall 69KV. ERCOT received emergency energy from CFE across the Laredo VFT.

Other Items

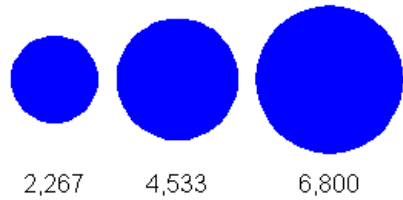
- **January 26th**
 - Held Real-time Balancing Market for interval ending 02:15 due to generation schedule change after offset entry. Resumed with interval ending 02:45 deployments.

Planning Summary

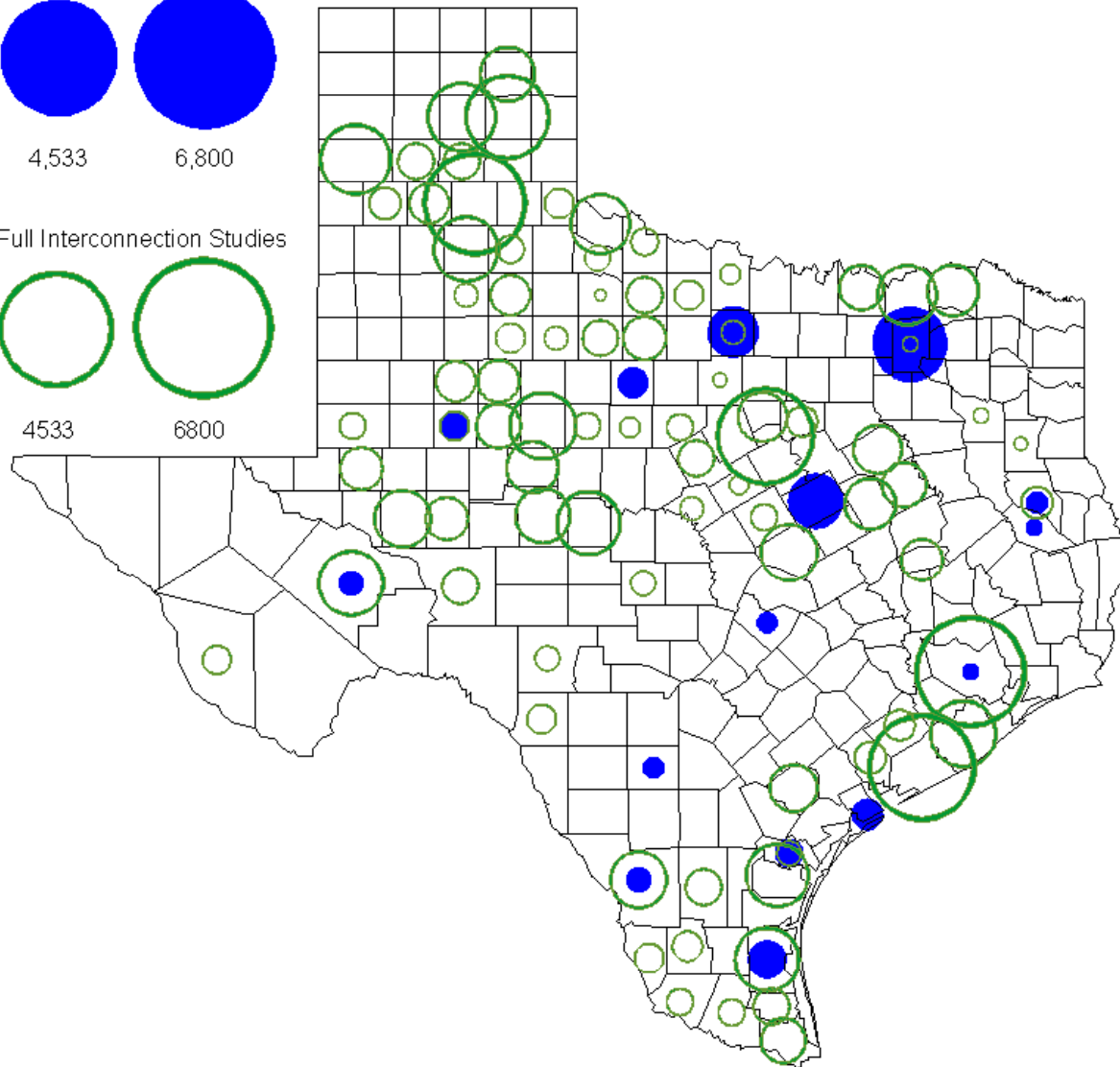
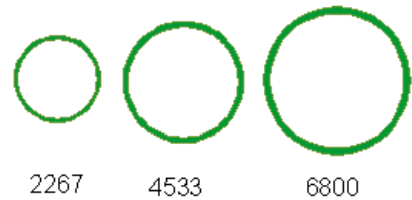
- **ERCOT is currently tracking 219 active generation interconnection requests totaling over 73,000 MW. This includes almost 45,000 MW of wind generation.**
- **Regional Planning is currently reviewing proposed transmission improvements with a total of \$798.0 Million**
- **Transmission Projects approved in 2009 total \$405.1 Million**
- **All projects (in engineering, routing, licensing and construction) total approximately \$9.5 Billion**
- **Transmission Projects energized in 2009 total about \$538.6 million**

County Location of Planned Generation with Interconnection Requests (all fuels) January 2010

MW under Interconnection Agreements

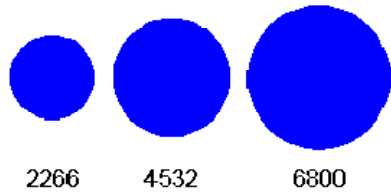


MW under Full Interconnection Studies

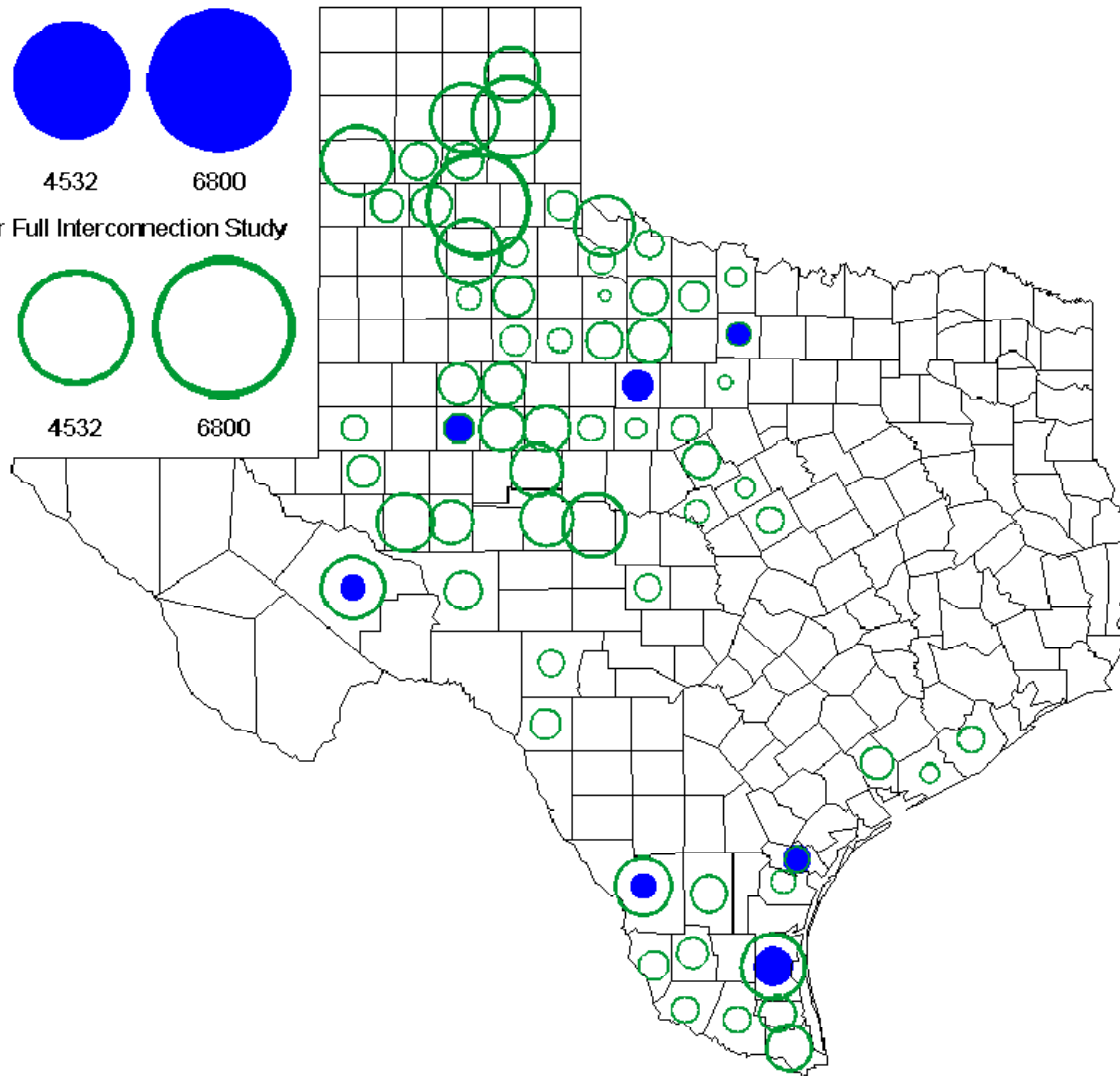


County Location of Planned Generation with Interconnection Requests (Wind) January 2010

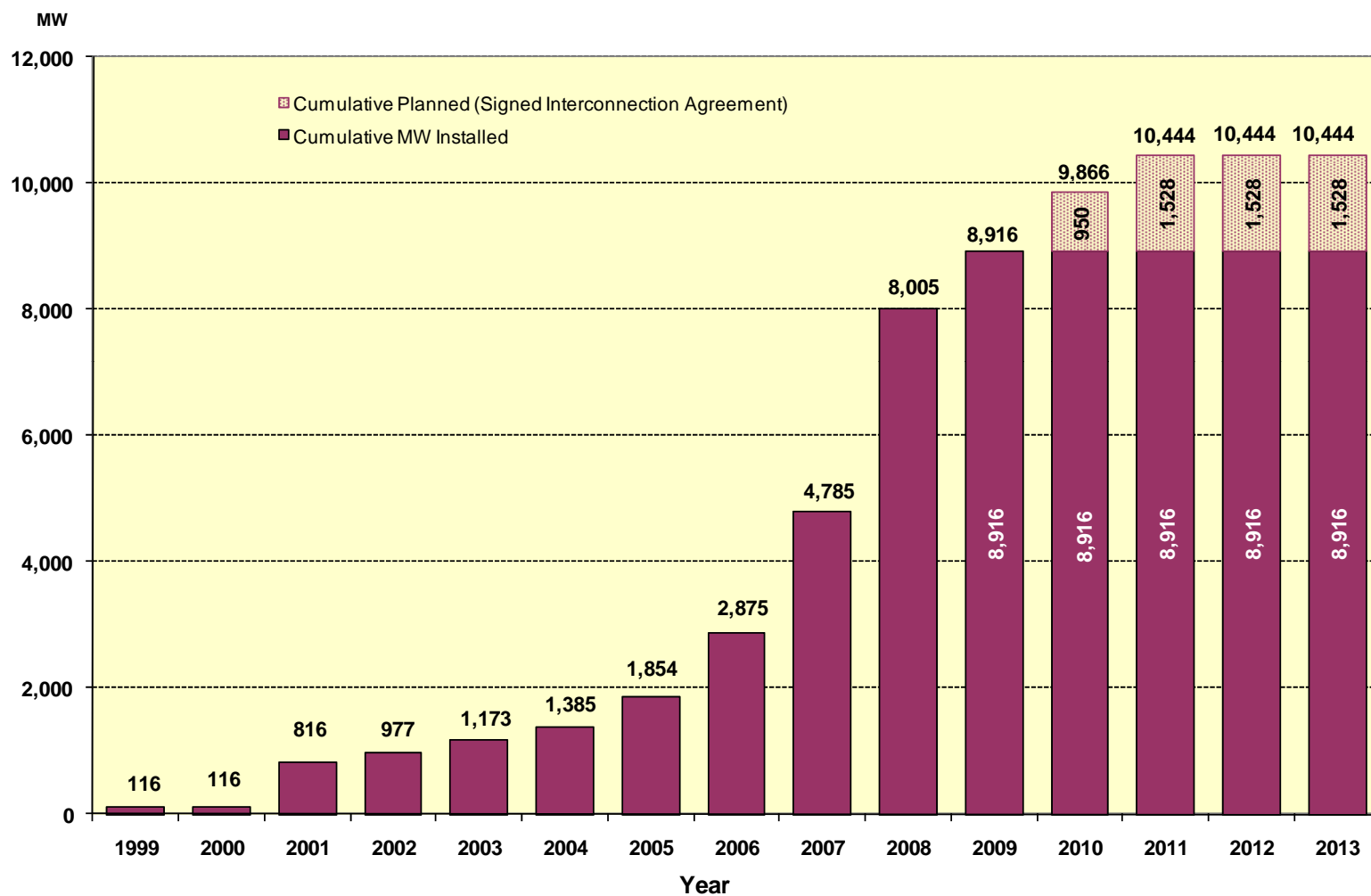
MW, under Interconnection Agreement



MW, under Full Interconnection Study

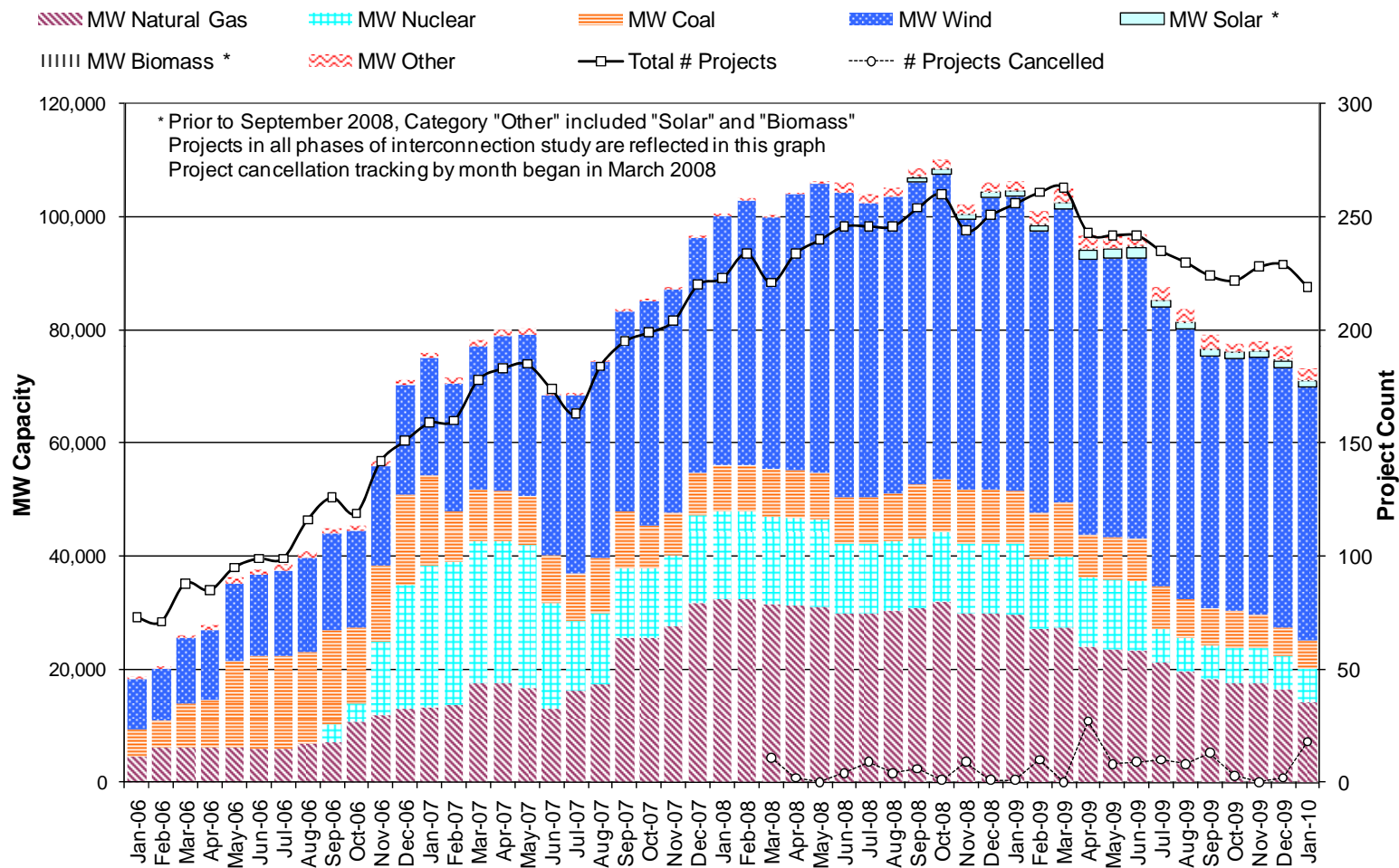


Wind Generation



as of January 31, 2010

Generation Interconnection Activity by Fuel



Generation Interconnection Activity by Project Phase

