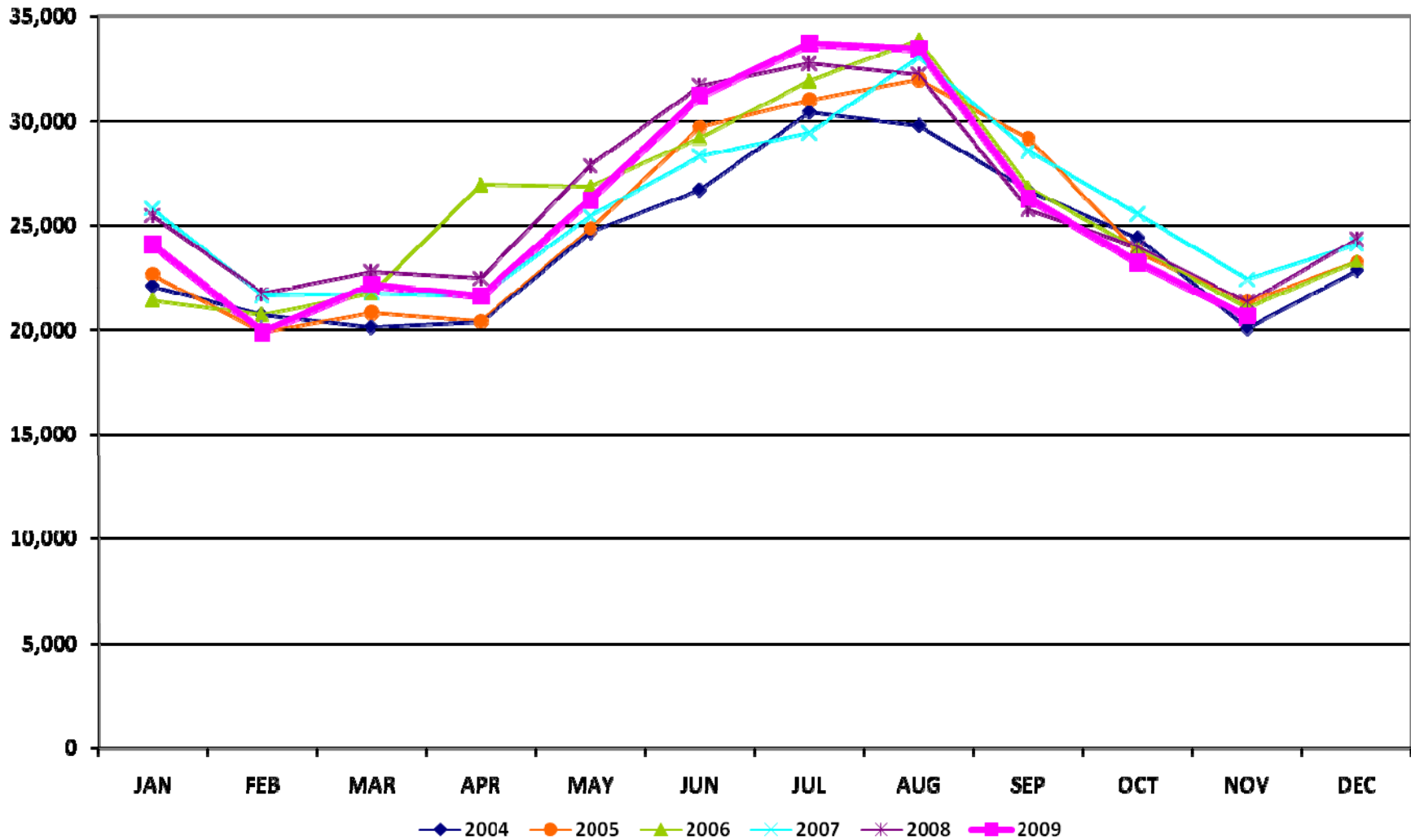


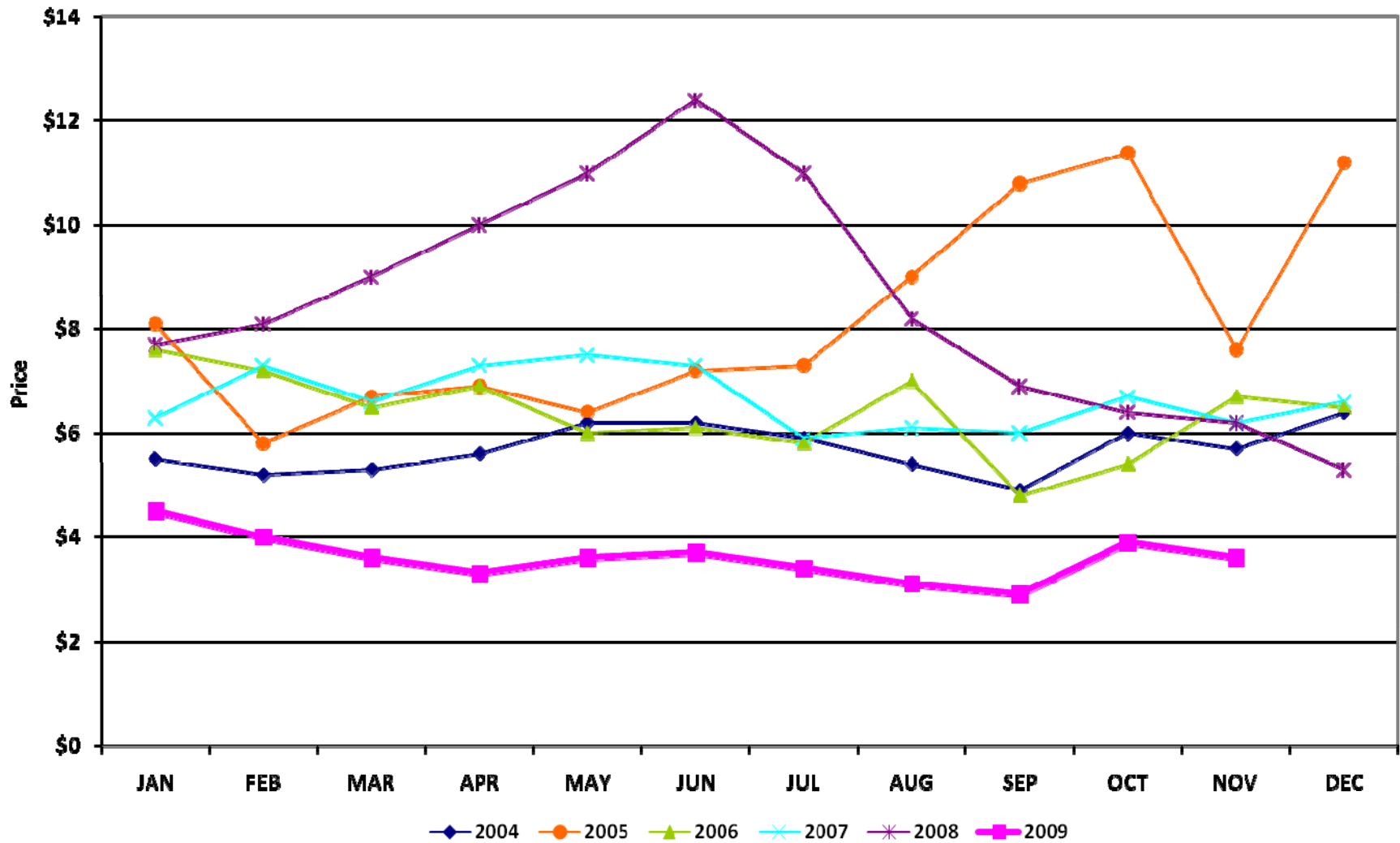
Energy Services

Total Market Volume (GWh)

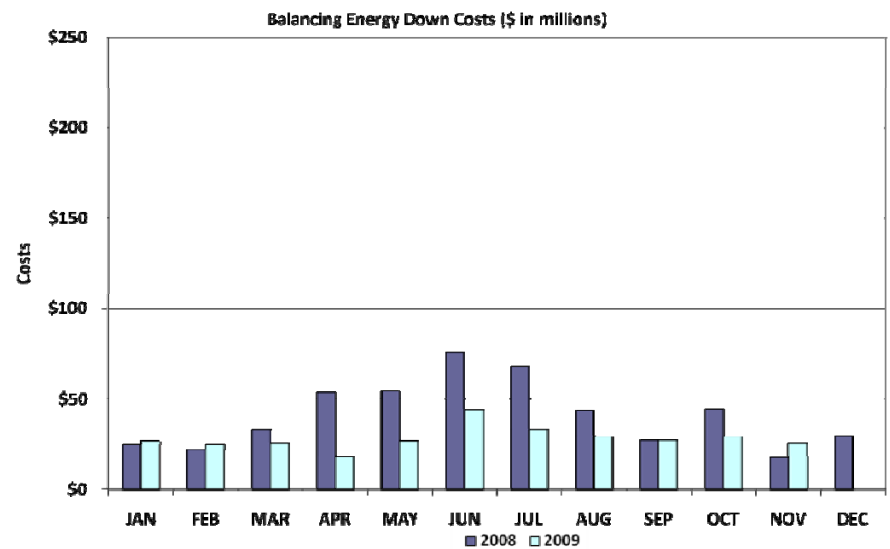
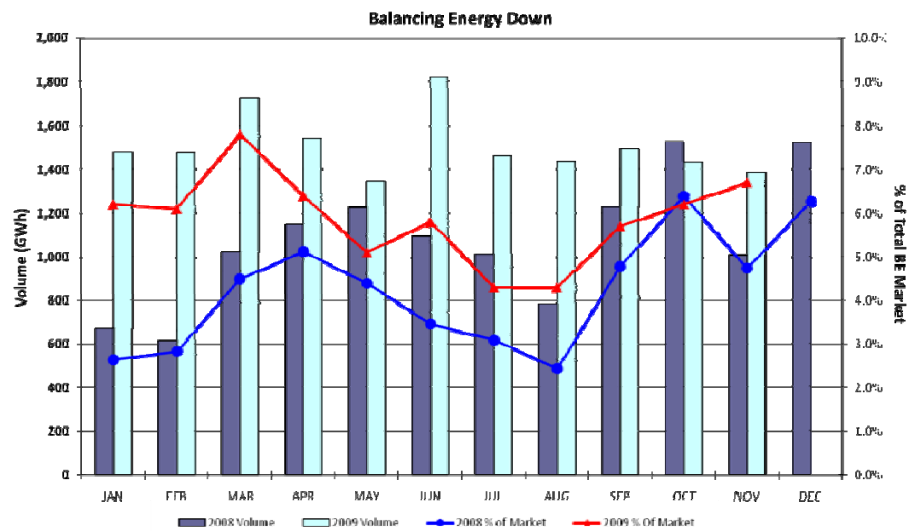
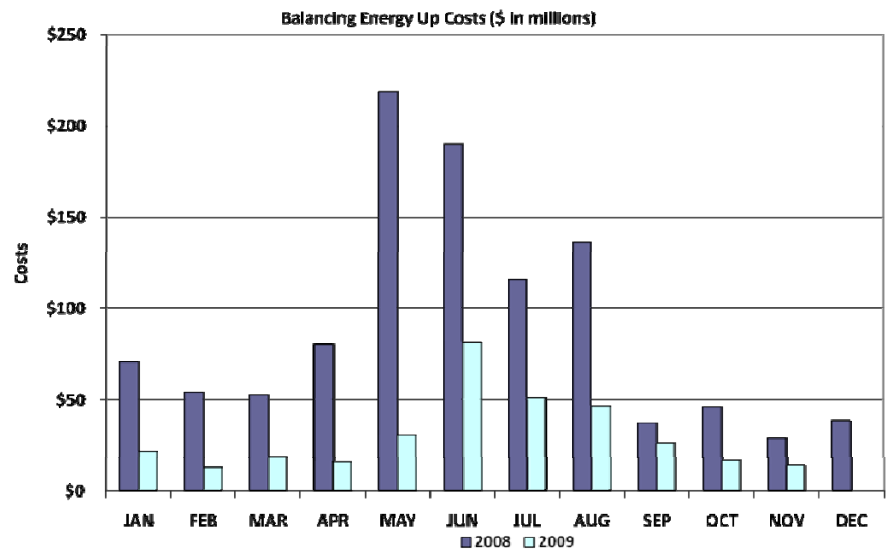
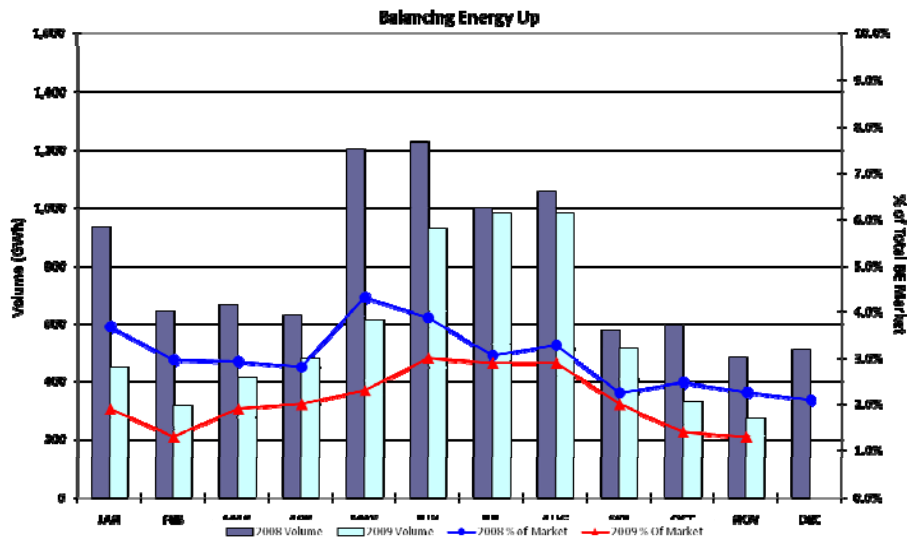


Natural Gas

Natural Gas Price Index (\$/MMBTU)

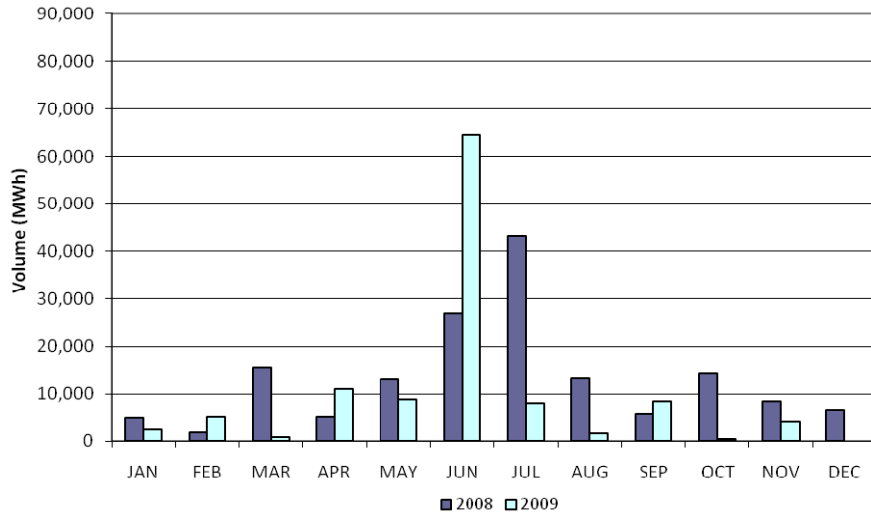


Balancing Energy Services – Volume and Cost

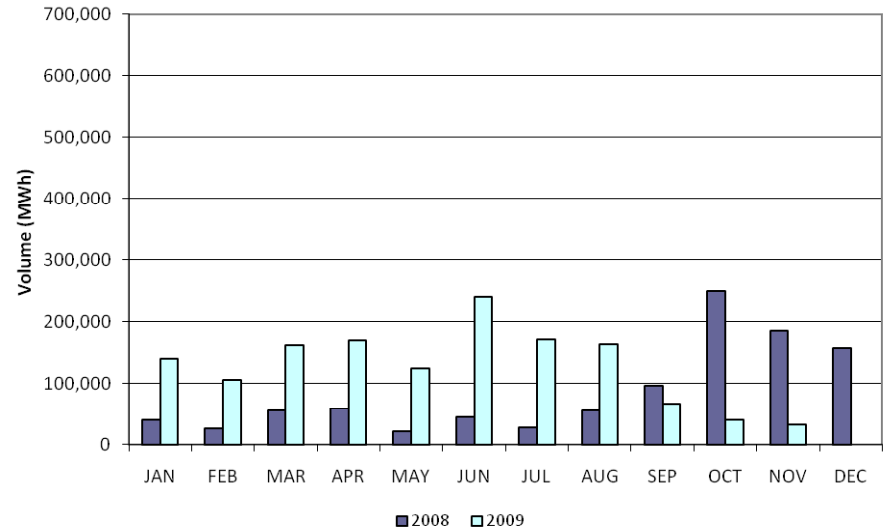


Local Congestion Volume

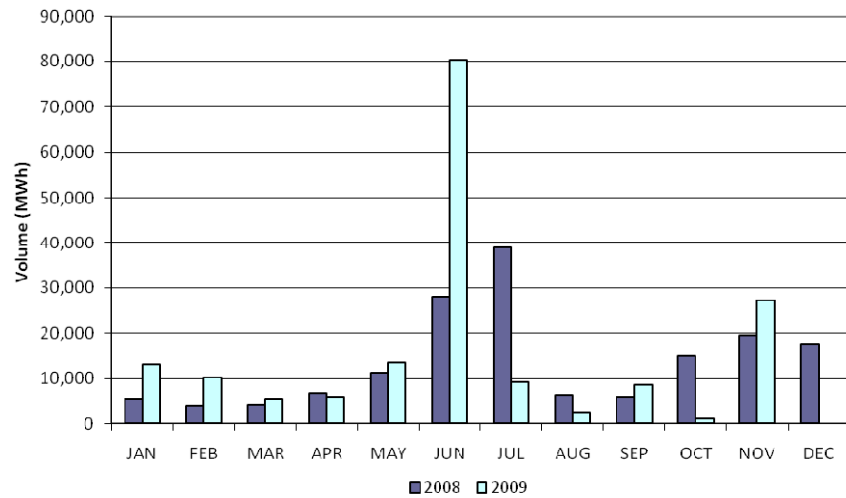
"Market Solution" Up



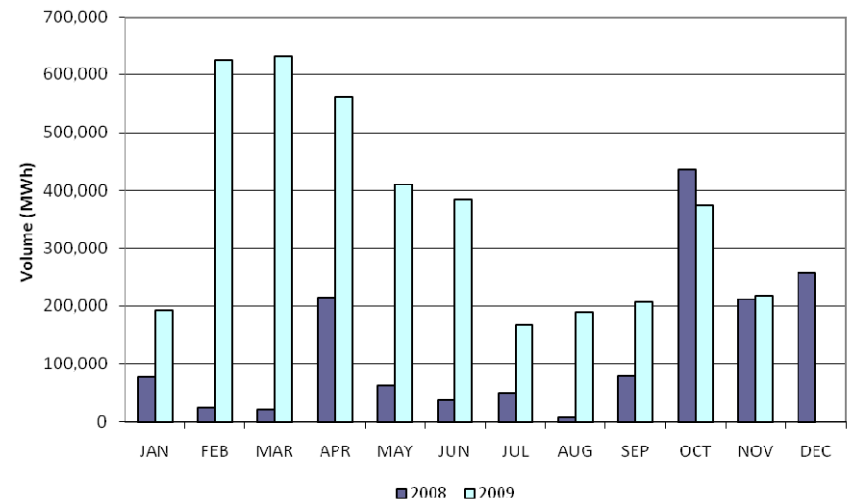
OOME Up



"Market Solution" Down

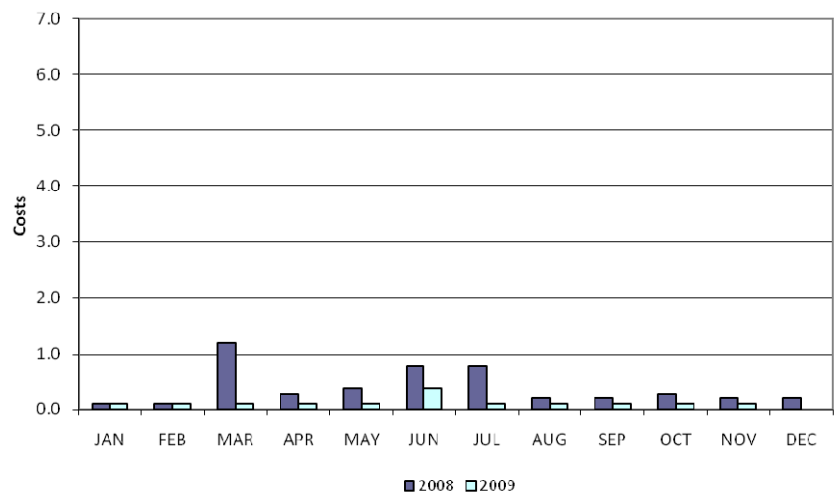


OOME Down

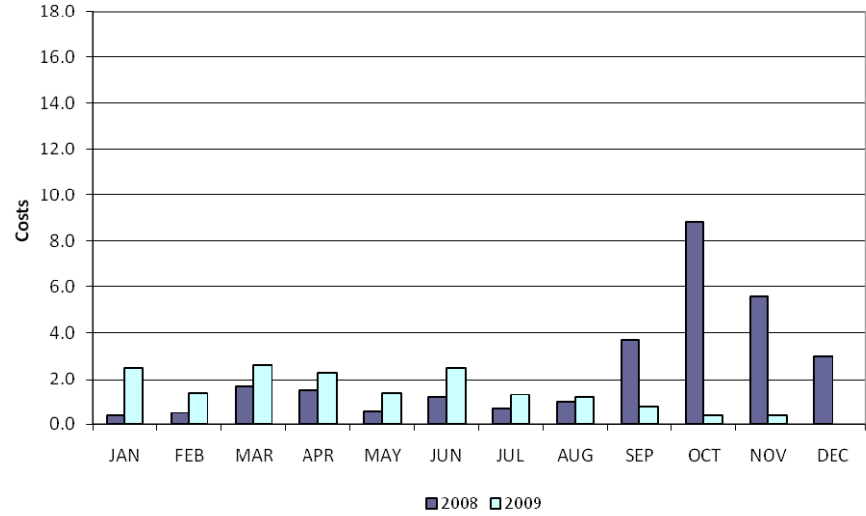


Local Congestion Costs

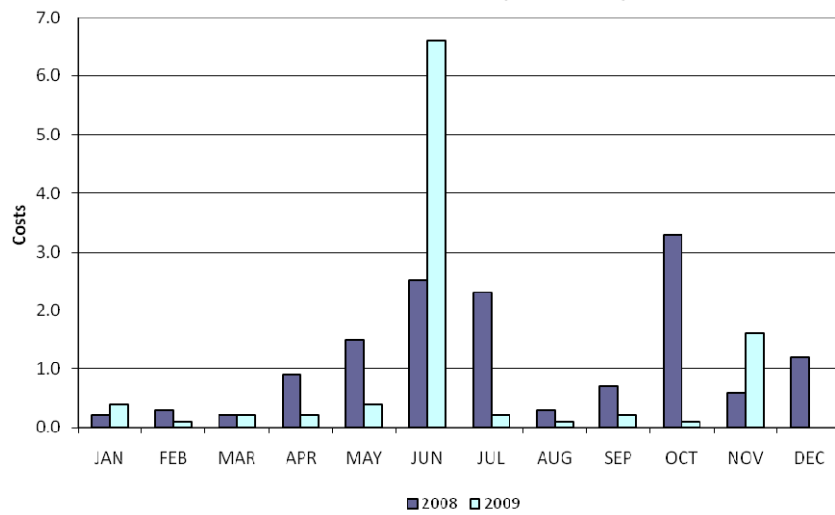
"Market Solution" Up Costs (\$ in millions)



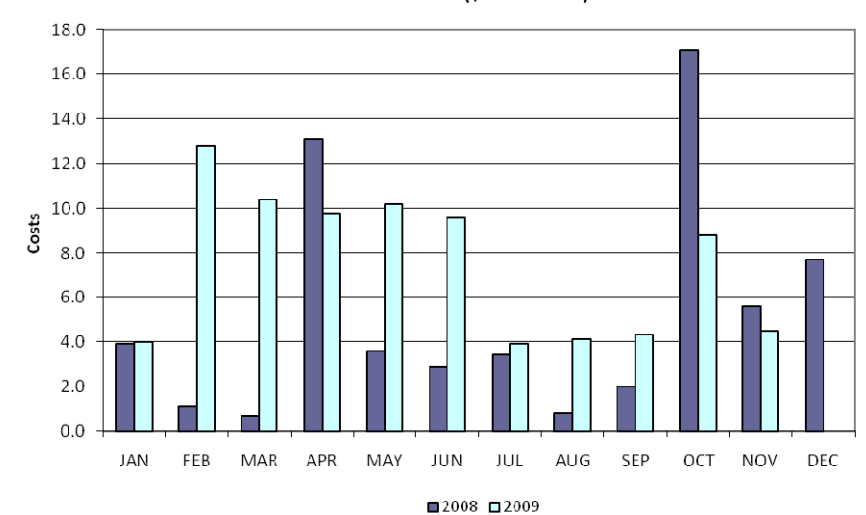
OOME Up Costs (\$ in millions)



"Market Solution" Down Costs (\$ in millions)



OOME Down Costs (\$ in millions)



Load Zone Price Data

Total Load Weighted Average Price (\$/MWH)*

[MCPE weighted by Total Zonal Load]

<u>LOAD ZONE</u>	<u>Nov 2009</u>	<u>Oct 2009</u>	<u>Sep 2009</u>	<u>Aug 2009</u>	<u>Jul 2009</u>	<u>Jun 2009</u>	<u>May 2009</u>	<u>Apr 2009</u>	<u>Mar 2009</u>	<u>Feb 2009</u>	<u>Jan 2009</u>
South	\$27.77	\$31.22	\$30.82	\$32.51	\$35.67	\$82.81	\$32.97	\$24.27	\$26.35	\$27.27	\$34.69
North	\$27.75	\$30.25	\$26.96	\$32.47	\$35.81	\$35.15	\$32.99	\$24.82	\$32.21	\$27.89	\$32.31
Houston	\$27.72	\$31.61	\$31.25	\$32.81	\$35.68	\$61.82	\$32.70	\$24.58	\$29.11	\$27.19	\$32.78
West	\$27.02	\$27.84	\$24.32	\$29.84	\$33.75	\$32.95	\$24.57	\$12.93	\$25.70	\$19.93	\$24.04

<u>LOAD ZONE</u>	<u>Nov 2008</u>	<u>Oct 2008</u>	<u>Sep 2008</u>	<u>Aug 2008</u>	<u>July 2008</u>	<u>Jun 2008</u>	<u>May 2008</u>	<u>Apr 2008</u>	<u>Mar 2008</u>	<u>Feb 2008</u>	<u>Jan 2008</u>
South	\$41.11	\$55.19	\$46.77	\$88.47	\$97.86	\$147.24	\$171.09	\$83.65	\$64.34	\$63.26	\$60.24
North	\$40.69	\$48.98	\$45.38	\$89.19	\$97.08	\$104.37	\$86.41	\$74.92	\$69.64	\$59.05	\$62.31
Houston	\$40.88	\$56.01	\$48.61	\$88.40	\$97.30	\$129.48	\$152.76	\$100.00	\$68.19	\$60.06	\$60.16
West	\$34.62	\$41.16	\$43.72	\$84.92	\$90.98	\$82.22	\$58.01	\$58.59	\$38.52	\$56.84	\$52.04

*Represents the average price for loads within the zone