



Nodal Program Update

Mike Cleary

Sr. VP and Chief Technology Officer

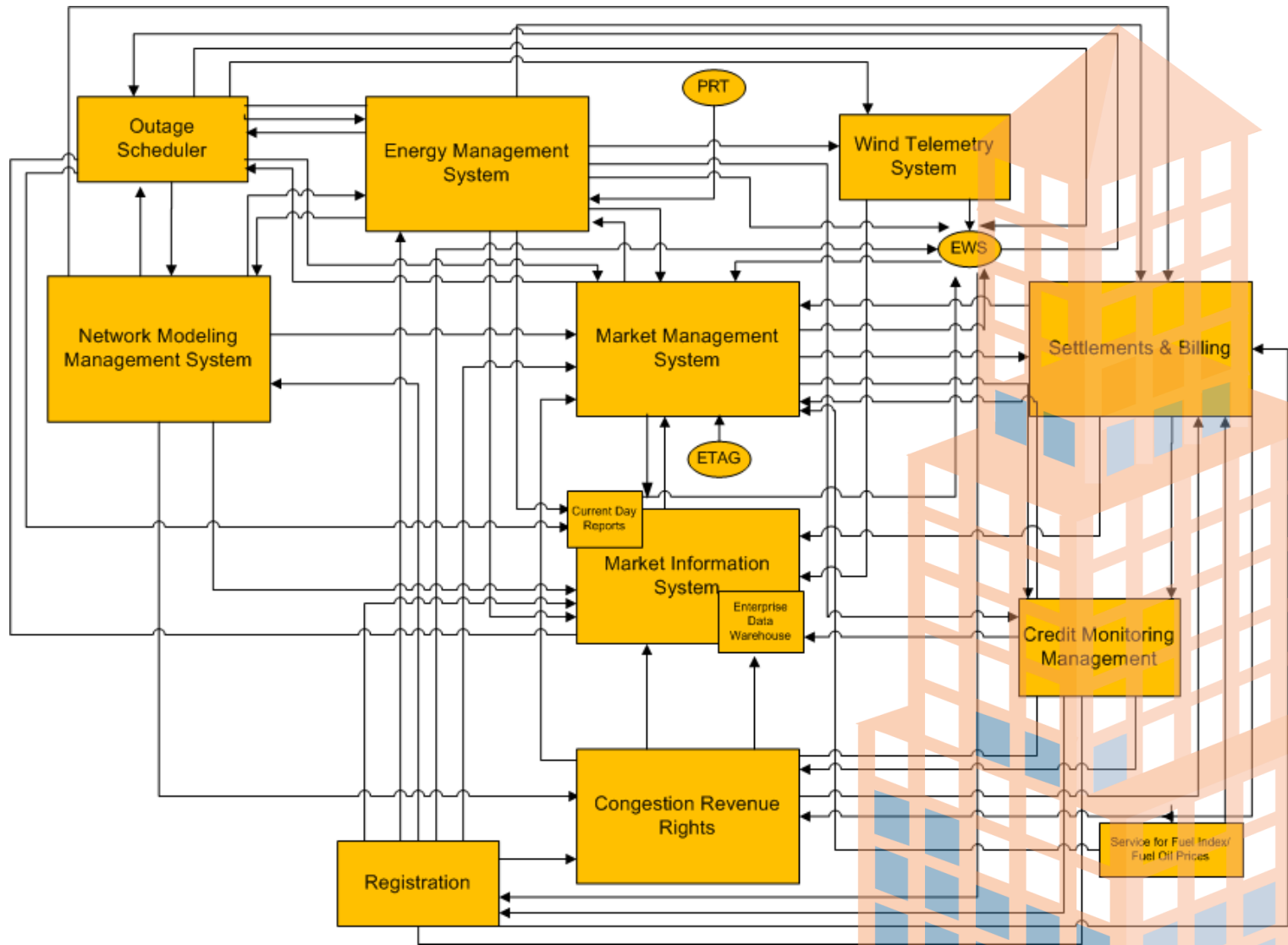
Sunset Review Commission

27 October 2009

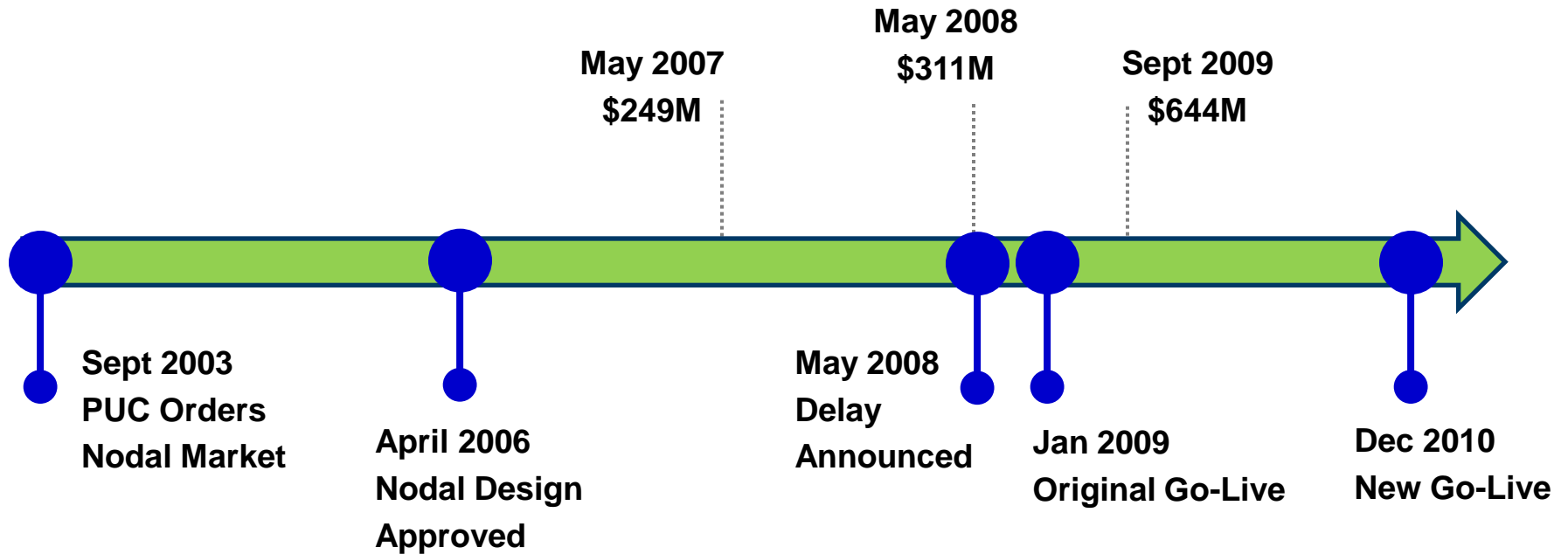
Nodal Program's Background

- **A complex engineering and business transformational program, involving hundreds of detailed workflows and processes**
- **April 5, 2006: PUCT signs order approving nodal stakeholder-developed protocols**
- **Program Scope**
 - Design and implement nodal market system, and transition from zonal market to nodal, as defined in PUCT-approved protocols
- **ERCOT's Objectives**
 - Directly assign congestion costs
 - Increase transparency of energy prices
 - Enhance reliability and increase market efficiency

Nodal Systems Blueprint

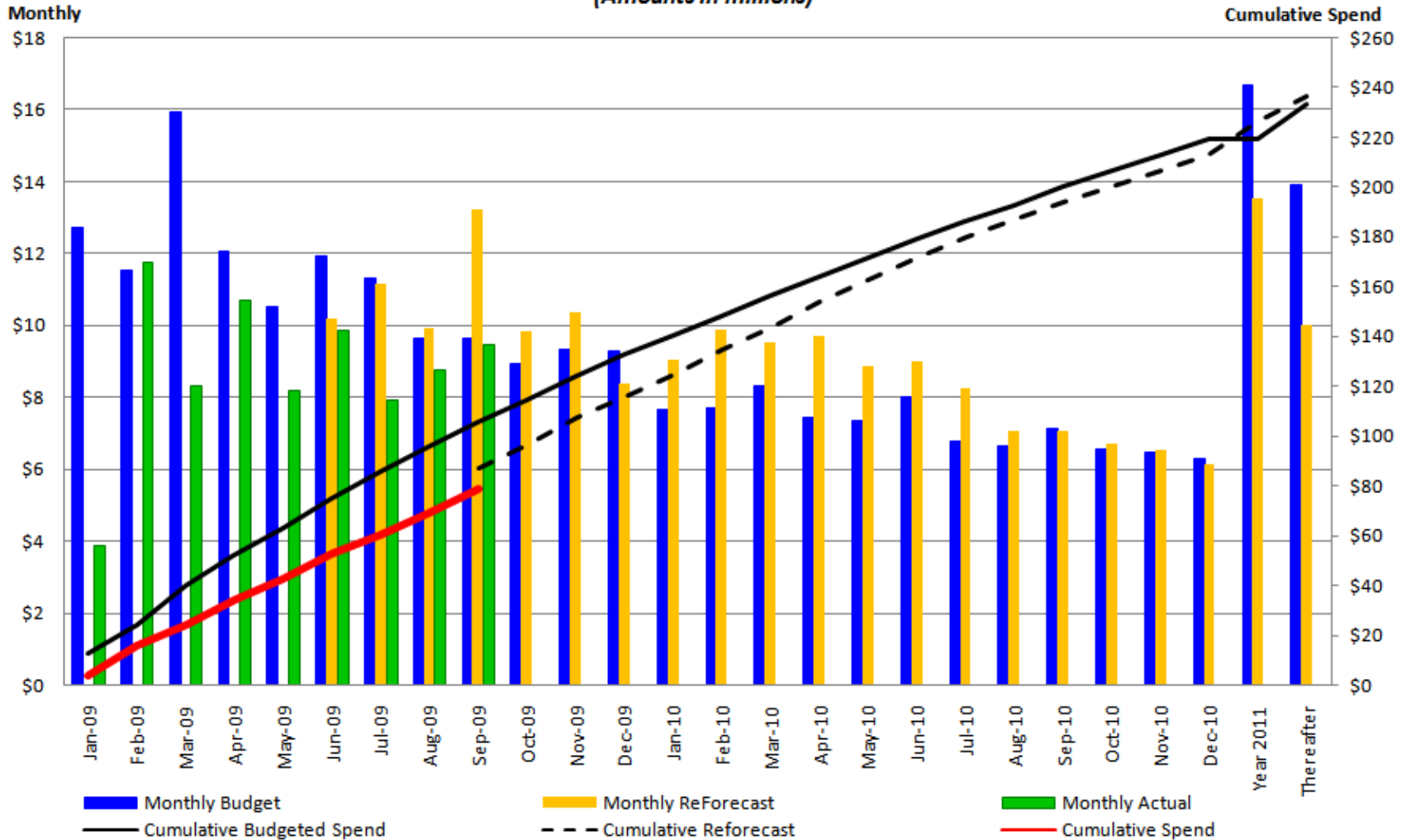


The Nodal Timeline



Program Cost Management

Monthly Budget, Forecast and Actual Analysis (Amounts in millions)



Financial Review - LTD Performance through September 2009

Nodal Program

Approved Forecast to Actual Comparison

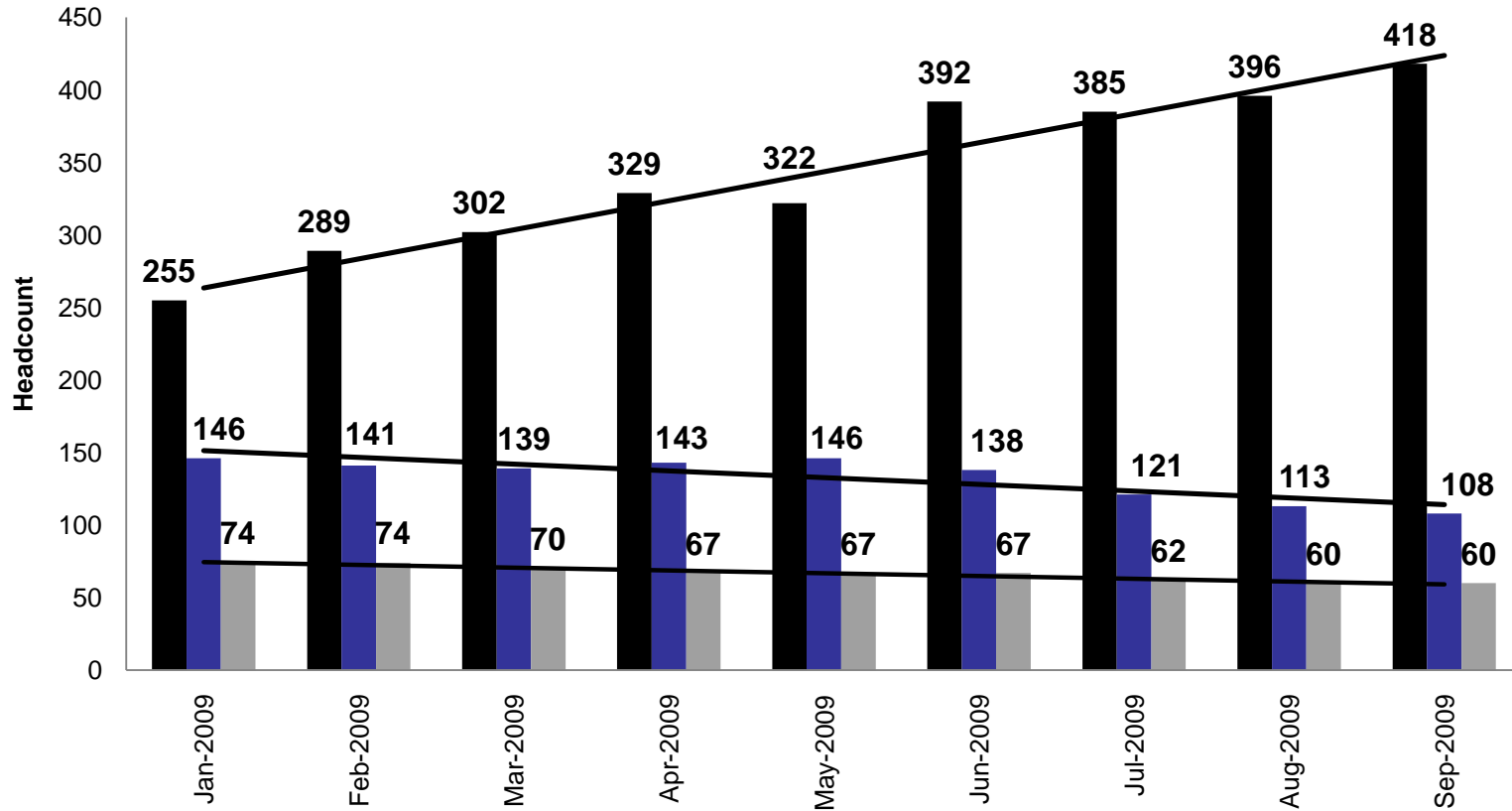
Life-to-Date through September 2009

| Line | Cost Summary | Forecast | Actual | Favorable / (Unfavorable) | | Forecast Cumulative Variance |
|------|---|----------------|----------------|---|--|------------------------------------|
| | | | | June-September 2009 Forecast Variance | January-May 2009 Budget Variance | |
| 1 | Internal Labor Costs | \$49.9 | \$49.6 | \$0.3 | \$3.4 | \$3.7 |
| 2 | Backfill Labor Costs | 5.0 | 4.9 | 0.1 | (0.2) | (0.1) |
| 3 | External Resource Costs | 250.2 | 245.3 | 4.9 | 8.6 | 13.5 |
| 4 | Software & Software Maintenance | 24.1 | 22.9 | 1.2 | (0.6) | 0.6 |
| 5 | Hardware & Hardware Maintenance | 51.7 | 49.7 | 2.0 | 1.6 | 3.6 |
| 6 | Other | 2.0 | 1.9 | 0.1 | 0.2 | 0.3 |
| 7 | Sub-total Direct Project Costs | \$382.9 | \$374.3 | \$8.6 | \$13.0 | \$21.6 |
| 8 | Board Discretionary Fund | \$0.0 | \$0.0 | \$0.0 | \$0.0 | \$0.0 |
| 9 | Allocations | \$19.1 | \$18.9 | \$0.2 | \$1.6 | \$1.8 |
| 10 | Finance Charges | 21.5 | 21.7 | (0.2) | 1.3 | 1.1 |
| 11 | Sub-total Indirect Project Costs | \$40.6 | \$40.6 | \$0.0 | \$2.9 | \$2.9 |
| 12 | | | | | | |
| 13 | Total | \$423.5 | \$414.9 | \$8.6 | \$15.9 | \$24.5 |

Amounts in millions

Nodal Program Headcount

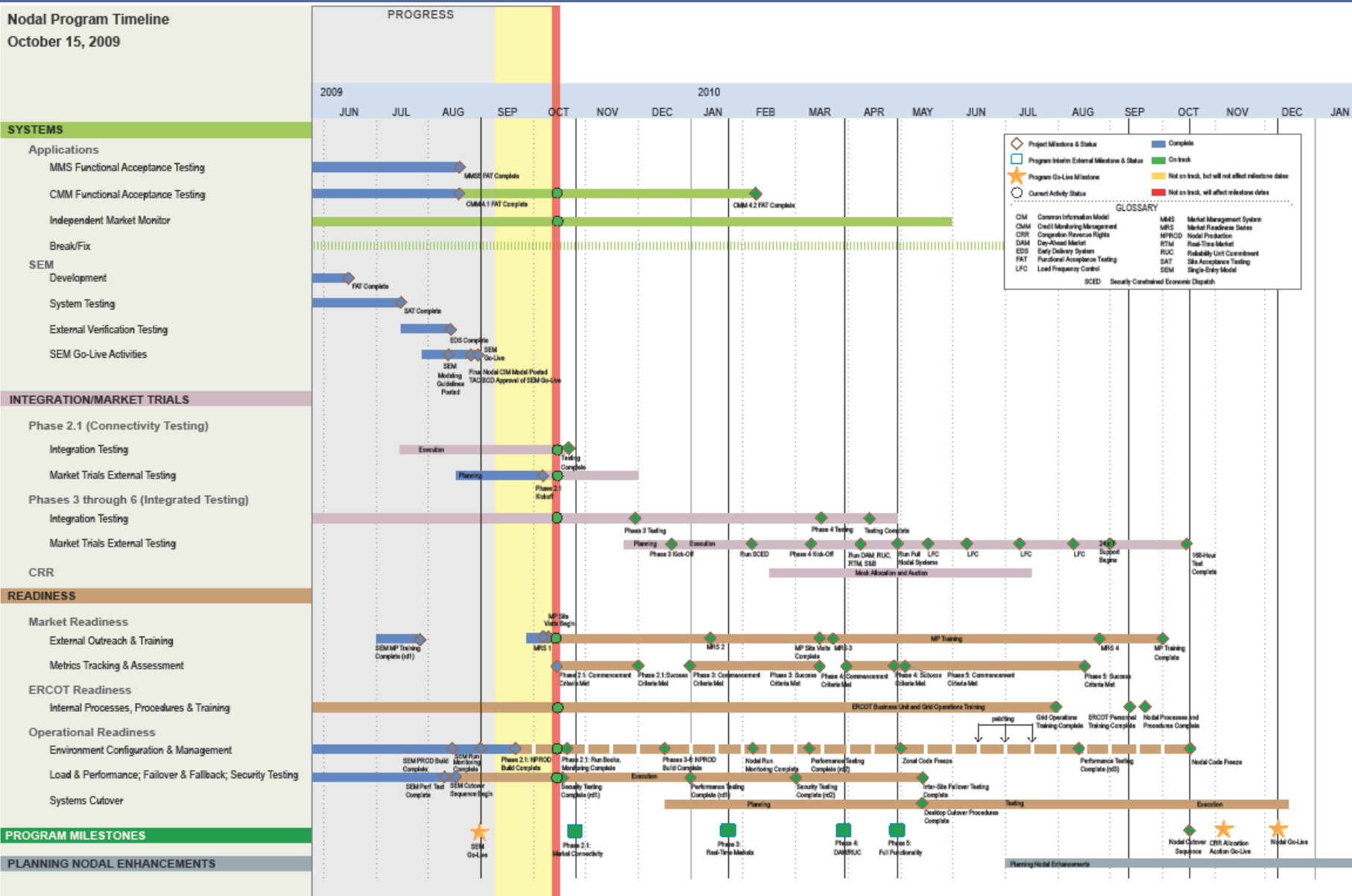
Nodal Internal/External and Vendor Headcount for 2009



| | Jan-2009 | Feb-2009 | Mar-2009 | Apr-2009 | May-2009 | Jun-2009 | Jul-2009 | Aug-2009 | Sep-2009 |
|--------------------|----------|----------|----------|----------|----------|----------|----------|----------|----------|
| ■ ERCOT Employees | 255 | 289 | 302 | 329 | 322 | 392 | 385 | 396 | 418 |
| ■ Contingent Labor | 146 | 141 | 139 | 143 | 146 | 138 | 121 | 113 | 108 |

Nodal Timeline

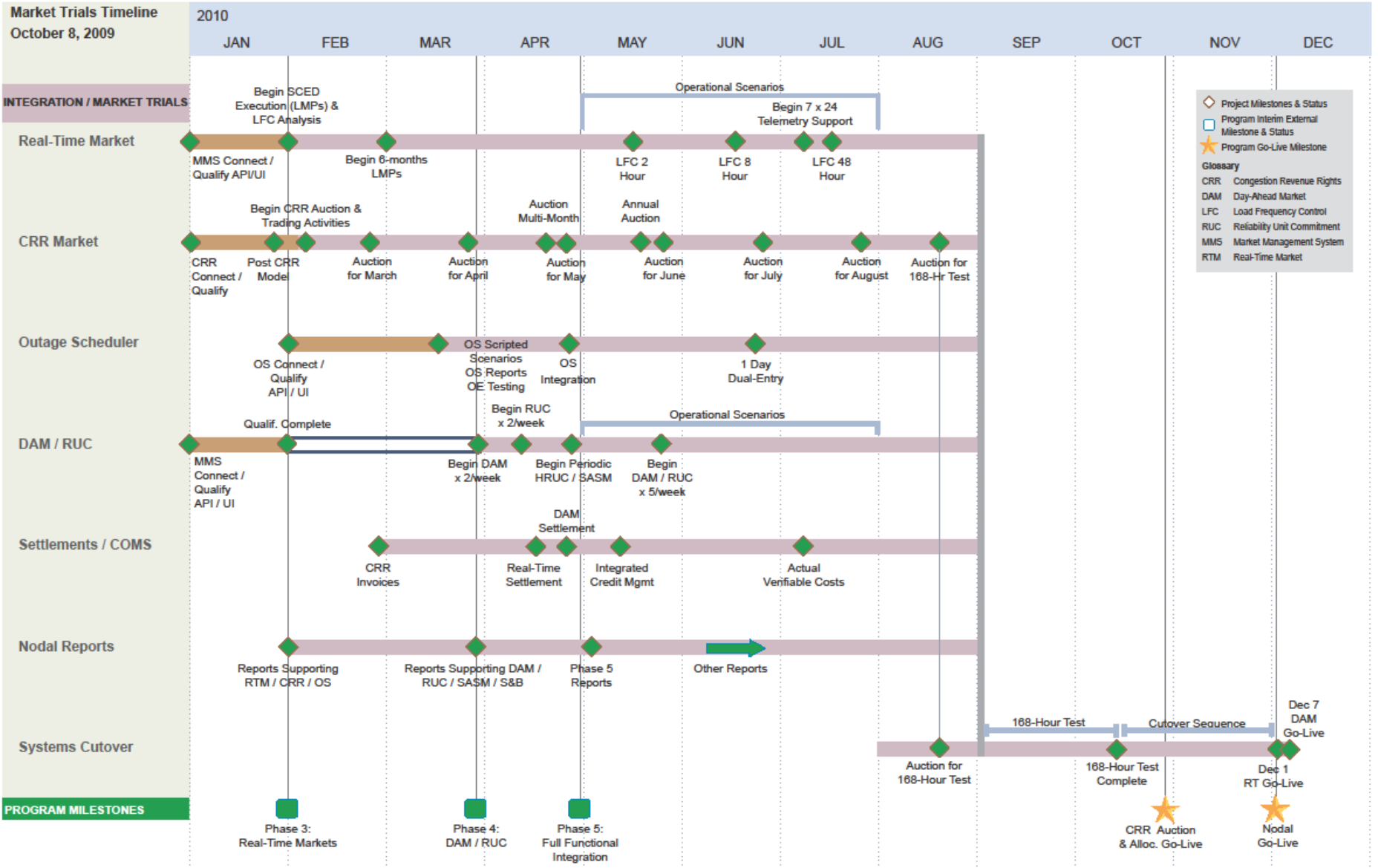
Nodal Program Timeline
October 15, 2009



Program Milestones

| Phase | When | Scope | Status |
|---------------------------------|----------------------------|--|--|
| 2.1: Market Connectivity | Oct. 28 | <ul style="list-style-type: none"> • MP interface testing (API, Market Manager UI) • Market System Rules Validation (Phase 1) | <ul style="list-style-type: none"> • On track • Migrated 2.1 software into Nodal Production environment • Functional regression and final performance testing under way |
| 3: Real-Time Markets | Mid January-Early February | <ul style="list-style-type: none"> • MMS-SCED execution • SCED results, report publishing • CRR auction execution (CRR UI) • OS submissions (API, OS UI) | <ul style="list-style-type: none"> • Planning complete • Integrated testing under way (CRR, OS, SCED) • Running Real-Time operating scenarios twice weekly |
| 4: DAM/RUC | Late March-Early April | <ul style="list-style-type: none"> • MMS-DAM, DRUC, HRUC, SCED execution • Market results, report publishing • Initial S&B execution • Outage, CRR integration | <ul style="list-style-type: none"> • Planning in progress • Integrated testing under way • Executing DAM mechanics |
| 5: Full Functionality | Late April-Early May | <ul style="list-style-type: none"> • Run full nodal systems | <ul style="list-style-type: none"> • Planning in progress • Internal DST test scheduled Nov. 1 |

Market Trials Roadmap



Legend

- ◇ Project Milestones & Status
- Program Interim External Milestone & Status
- ★ Program Go-Live Milestone

Glossary

- CRR Congestion Revenue Rights
- DAM Day-Ahead Market
- LFC Load Frequency Control
- RUC Reliability Unit Commitment
- MMS Market Management System
- RTM Real-Time Market



Participant Readiness Touch Points

| 2009/2010 | | | | |
|----------------------|---|--|--|--|
| | October | November | December | January |
| Meetings | <ul style="list-style-type: none"> • NATF 10/13 • NATF 10/27 | | <ul style="list-style-type: none"> • NATF 12/8 | <ul style="list-style-type: none"> • NATF tbd |
| Training | <ul style="list-style-type: none"> • Nodal 101 • LSE 201 • Generation 101 • Basic Training: http://nodal.ercot.com/training/index.html | <ul style="list-style-type: none"> • Nodal 101 • LSE 201 • Generation 101, 201 • Economics of LMP • Transmission 101 ◆ Settlement Workshop | <ul style="list-style-type: none"> • Nodal 101 • LSE 201 • Generation 101, 201 • Basic Training • Economics of LMP • Transmission 101 ◆ Settlement Workshop | <ul style="list-style-type: none"> • Nodal 101 • LSE 201 • Generation 101, 201 • CRR – online ◆ Settlement Workshop |
| Outreach | <ul style="list-style-type: none"> ◆ Readiness Center • Limited ERCOT metrics • 5 site visits | <ul style="list-style-type: none"> • Additional ERCOT & MP metrics • 6 site visits | <ul style="list-style-type: none"> • 3 site visits | <ul style="list-style-type: none"> • 8 site visits • Initiate Phase 3 metrics |
| Market trials | <ul style="list-style-type: none"> • Bi-weekly calls ◆ 2010 Market Trials Roadmap: Oct. 8 ◆ Technical Workshop: Oct. 28 ■ Market Connectivity open to MPs Oct. 28 | <ul style="list-style-type: none"> • Bi-weekly calls • Voluntary MP connectivity testing | <ul style="list-style-type: none"> • Bi-weekly calls • Voluntary MP connectivity testing | <ul style="list-style-type: none"> • Start weekly calls • MP re-qualification begins |
| | | | <ul style="list-style-type: none"> ◆ MP Handbooks <ul style="list-style-type: none"> • SCED/LFC • CRR | <ul style="list-style-type: none"> • DAM/RUC • Outage Scheduler • COMS |

Questions ?