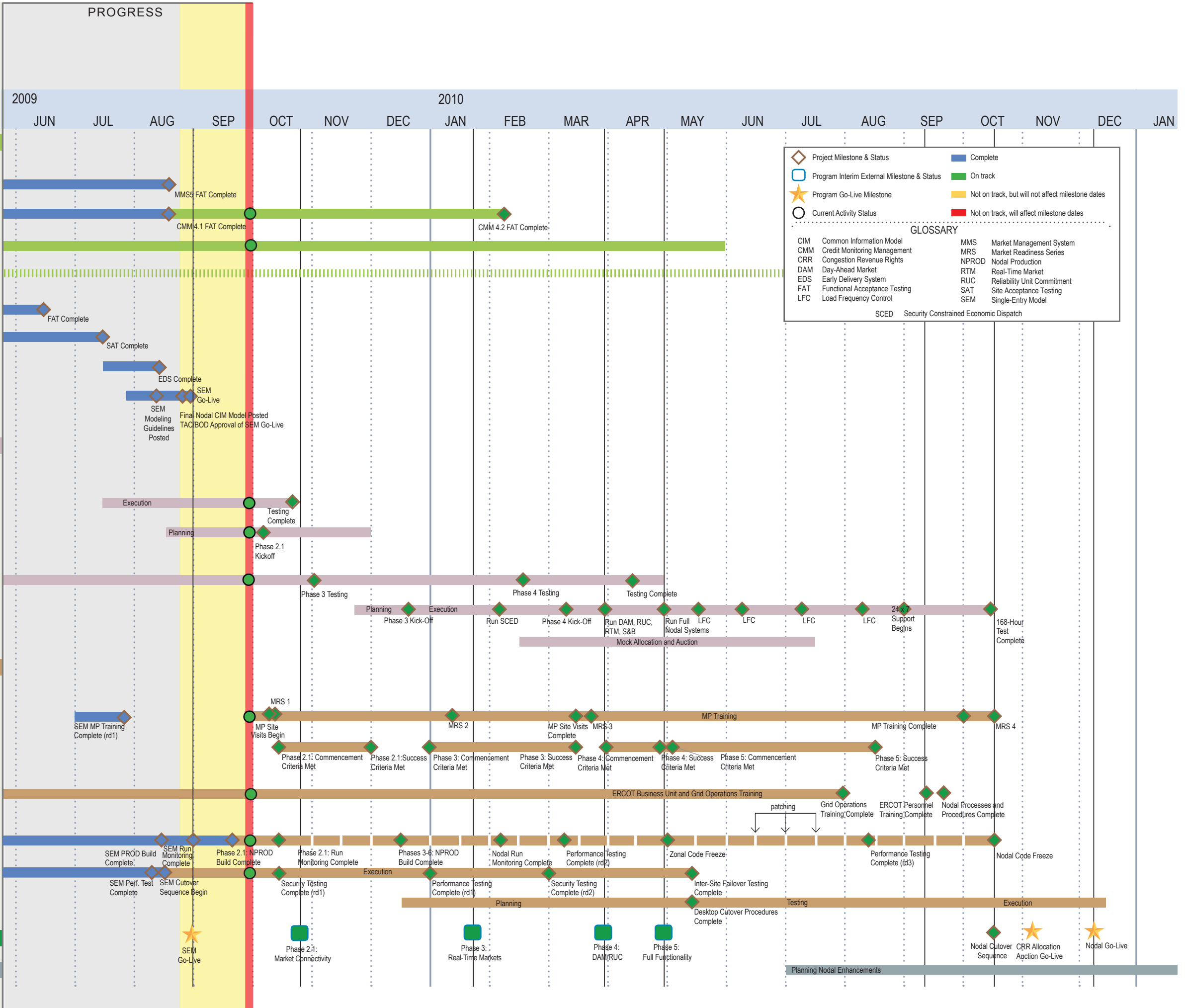


Nodal Program Timeline

September 30, 2009



◇	Project Milestone & Status	■	Complete
□	Program Interim External Milestone & Status	■	On track
★	Program Go-Live Milestone	■	Not on track, but will not affect milestone dates
○	Current Activity Status	■	Not on track, will affect milestone dates

GLOSSARY

CIM	Common Information Model	MMS	Market Management System
CMM	Credit Monitoring Management	MRS	Market Readiness Series
CRR	Congestion Revenue Rights	NPROD	Nodal Production
DAM	Day-Ahead Market	RTM	Real-Time Market
EDS	Early Delivery System	RUC	Reliability Unit Commitment
FAT	Functional Acceptance Testing	SAT	Site Acceptance Testing
LFC	Load Frequency Control	SEM	Single-Entry Model

SCED Security Constrained Economic Dispatch

SYSTEMS

- Applications**
- MMS Functional Acceptance Testing
 - CMM Functional Acceptance Testing
 - Independent Market Monitor
 - Break/Fix
- SEM**
- Development
 - System Testing
 - External Verification Testing
 - SEM Go-Live Activities

INTEGRATION/MARKET TRIALS

- Phase 2.1 (Connectivity Testing)**
- Integration Testing
 - Market Trials External Testing
- Phases 3 through 6 (Integrated Testing)**
- Integration Testing
 - Market Trials External Testing
- CRR**

READINESS

- Market Readiness**
- External Outreach & Training
 - Metrics Tracking & Assessment
- ERCOT Readiness**
- Internal Processes, Procedures & Training
- Operational Readiness**
- Environment Configuration & Management
 - Load & Performance; Failover & Fallback; Security Testing
 - Systems Cutover

PROGRAM MILESTONES

PLANNING NODAL ENHANCEMENTS