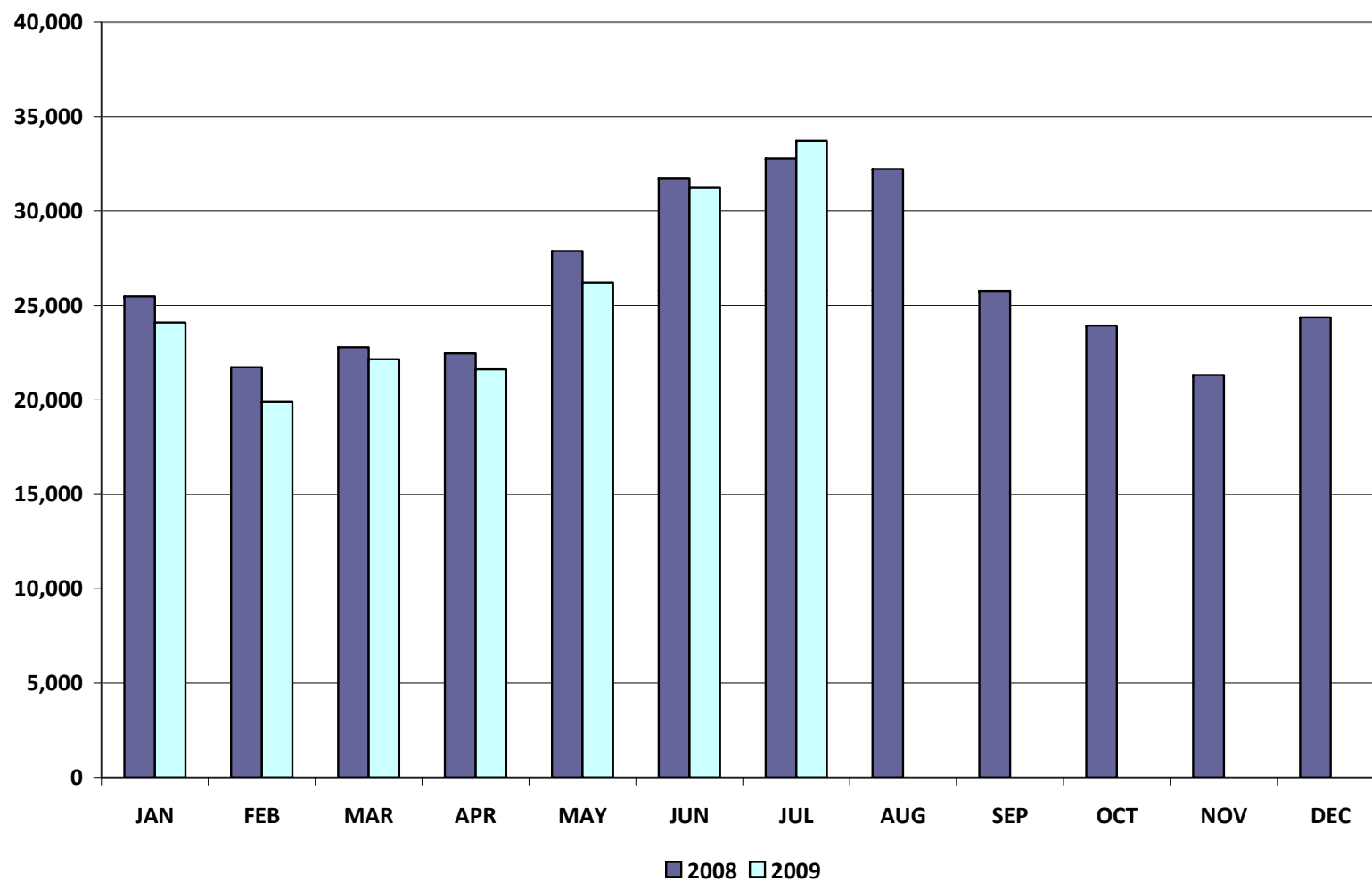


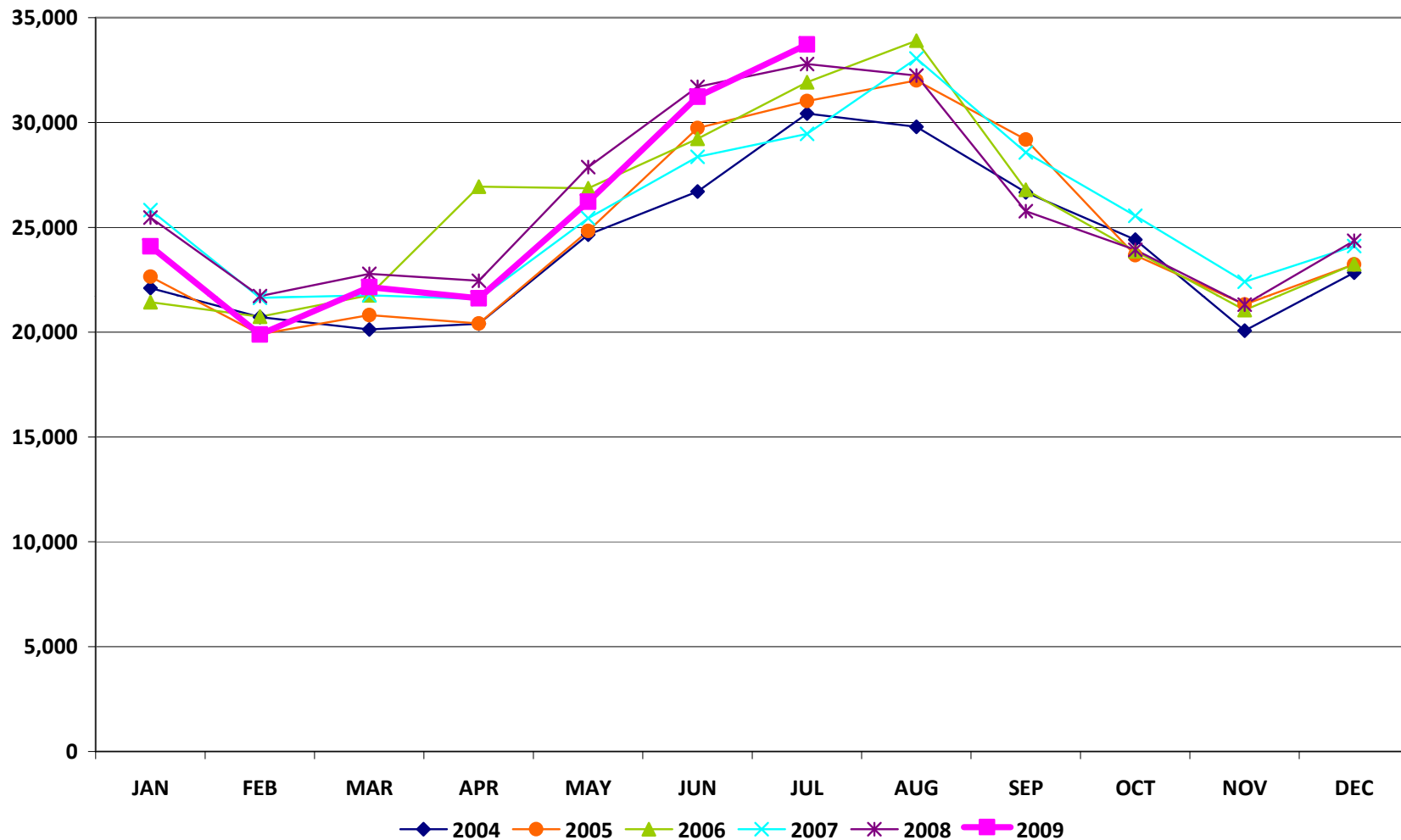
Energy Services

Total Market Volume (GWh)



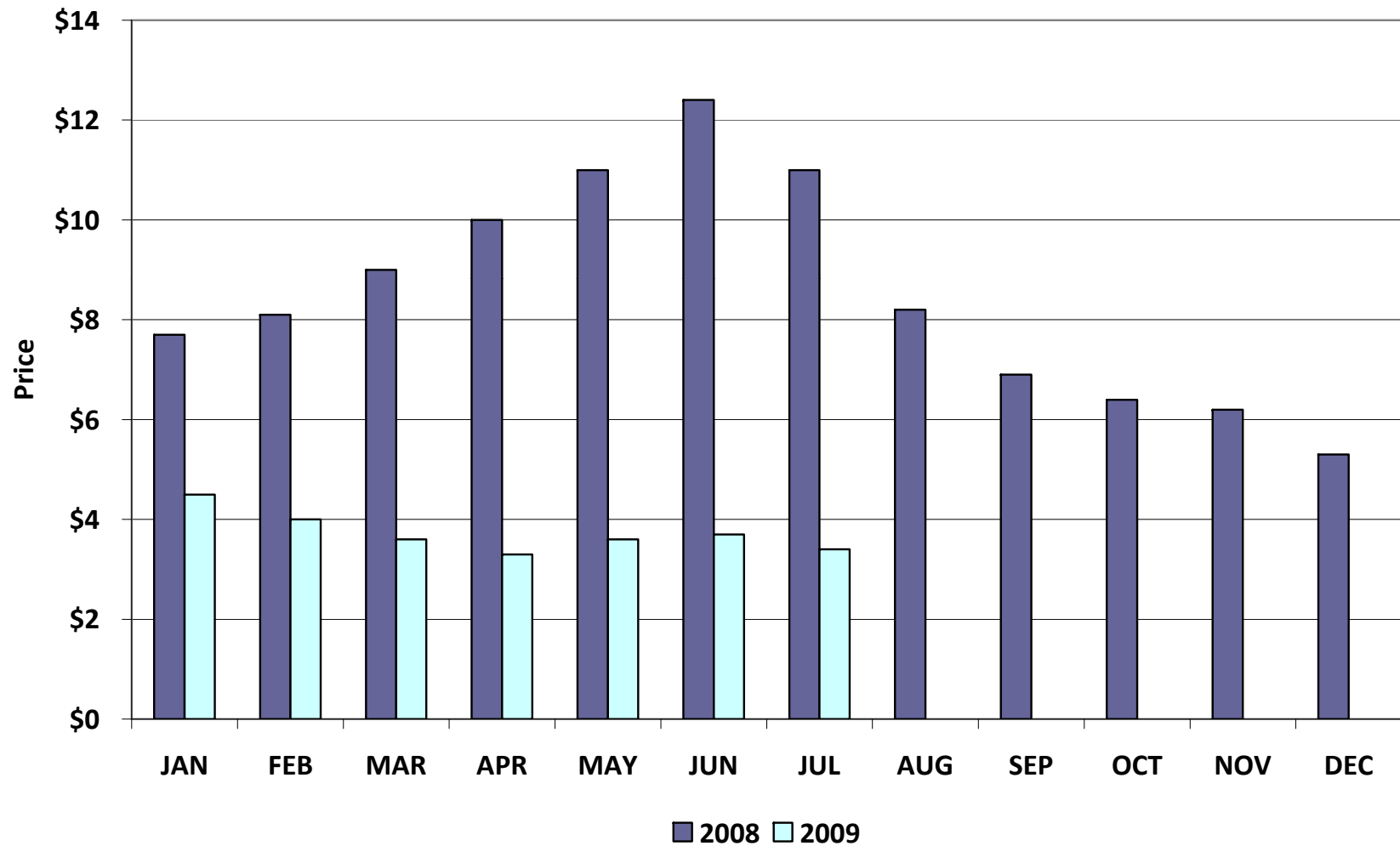
Energy Services

Total Market Volume (GWh)



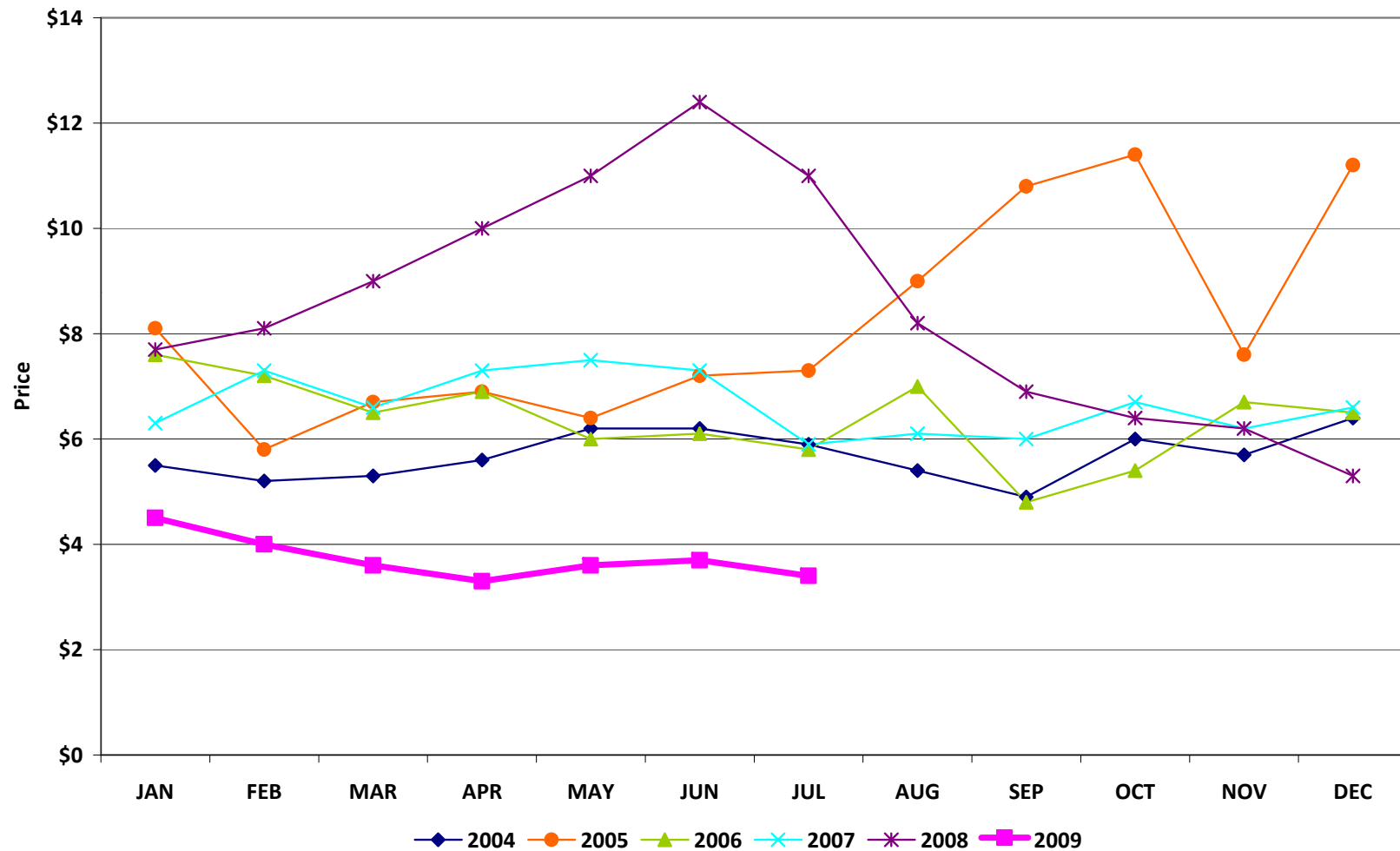
Natural Gas

Natural Gas Price Index (\$/MMBTU)

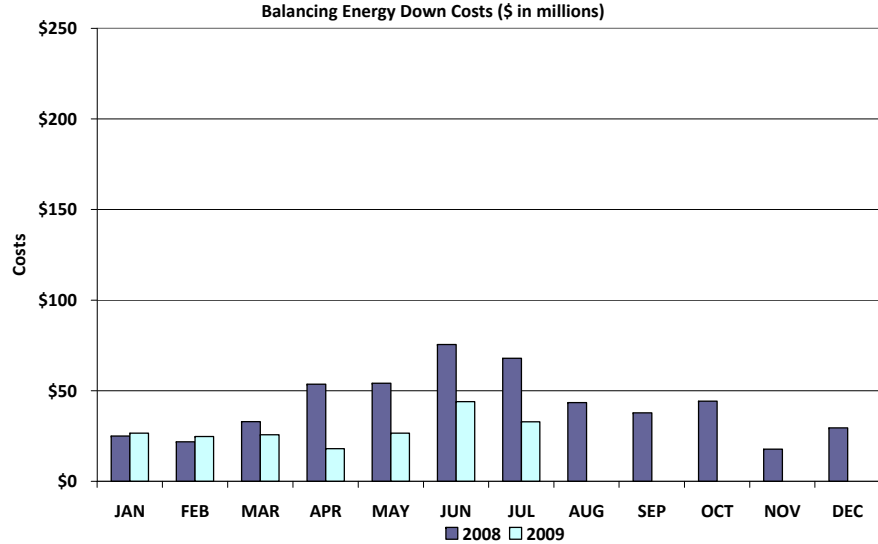
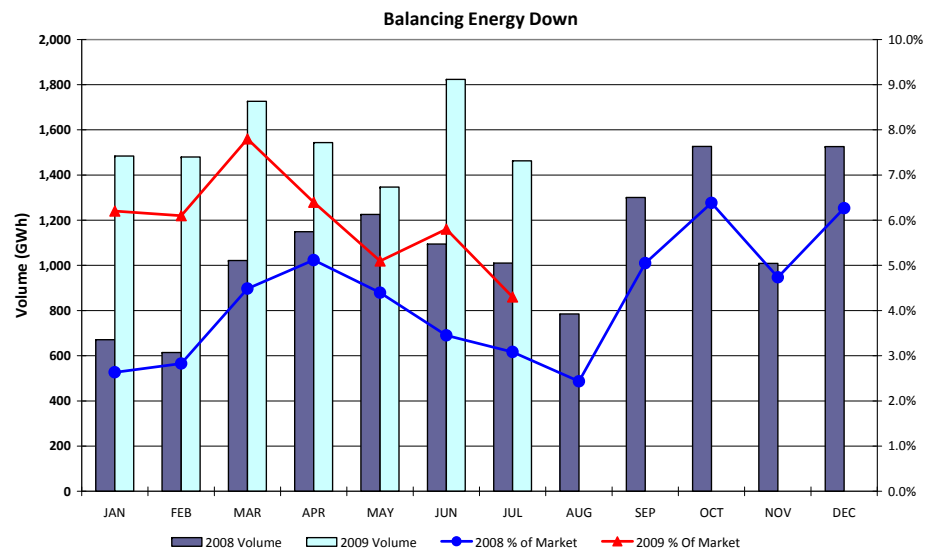
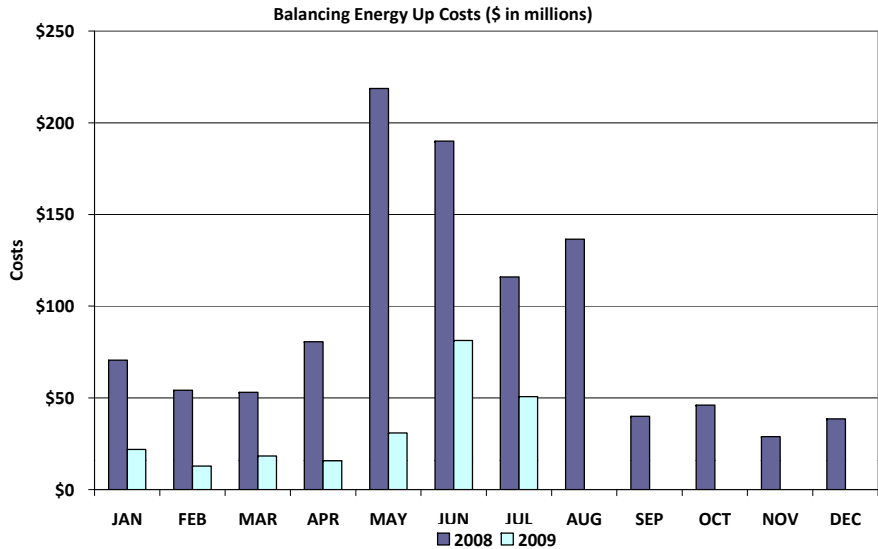
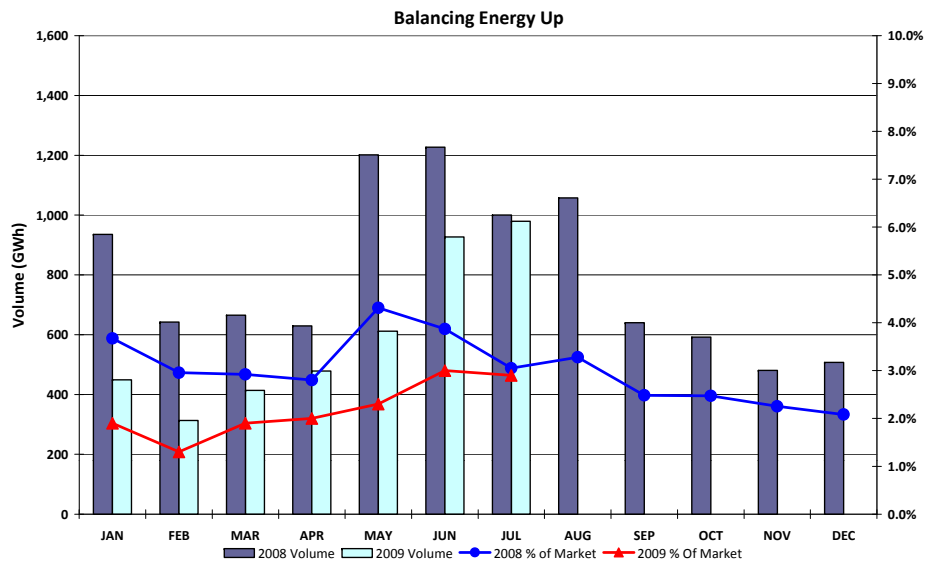


Natural Gas

Natural Gas Price Index (\$/MMBTU)



Balancing Energy Services – Volume and Cost



Load Zone Price Data

Total Load Weighted Average Price (\$/MWH)*

[MCPE weighted by Total Zonal Load]

<u>LOAD ZONE</u>	<u>Jul 2009</u>	<u>Jun 2009</u>	<u>May 2009</u>	<u>Apr 2009</u>	<u>Mar 2009</u>	<u>Feb 2009</u>	<u>Jan 2009</u>
South	\$35.67	\$82.81	\$32.97	\$24.27	\$26.35	\$27.27	\$34.69
North	\$35.81	\$35.15	\$32.99	\$24.82	\$32.21	\$27.89	\$32.31
Houston	\$35.68	\$61.82	\$32.70	\$24.58	\$29.11	\$27.19	\$32.78
West	\$33.75	\$32.95	\$24.57	\$12.93	\$25.70	\$19.93	\$24.04

<u>LOAD ZONE</u>	<u>July 2008</u>	<u>Jun 2008</u>	<u>May 2008</u>	<u>Apr 2008</u>	<u>Mar 2008</u>	<u>Feb 2008</u>	<u>Jan 2008</u>
South	\$97.86	\$147.24	\$171.09	\$83.65	\$64.34	\$63.26	\$60.24
North	\$97.08	\$104.37	\$86.41	\$74.92	\$69.64	\$59.05	\$62.31
Houston	\$97.30	\$129.48	\$152.76	\$100.00	\$68.19	\$60.06	\$60.16
West	\$90.98	\$82.22	\$58.01	\$58.59	\$38.52	\$56.84	\$52.04

**Represents the average price for loads within the zone*