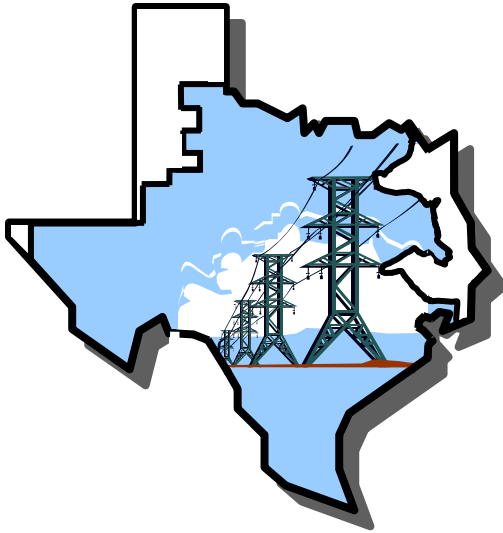




System Planning Division



Monthly Status Report

to

Reliability and Operations Subcommittee

for

June 2009

Report Highlights

Item

1.
 - ERCOT is currently tracking 242 active generation interconnection requests totaling almost 97,000 MW. This includes over 49,000 MW of wind generation.

2.
 - Regional Planning is currently reviewing proposed transmission improvements with a total cost of \$948.3 Million
 - Transmission Projects approved in 2009 total \$ 105 Million
 - All projects (in engineering, routing, licensing and construction) totals approximately \$4.1 Billion
 - Transmission Projects energized in 2008 total about \$453 million

Table of Contents

1. Generation Interconnection.....	1
1.1 New Generation Beginning Commercial Operations.....	1
1.2 New Generation Interconnection Agreements	1
1.3 Summary of Active Generation Interconnection Requests	1
1.4 Publicly Disclosed Generation Interconnection Projects.....	3
1.5 Generation Projects Undergoing Full Interconnection Studies	5
1.6 Wind Generation	6
2. Regional Planning Group Project Reviews.....	7
3. Other Notable Activities	12

1. Generation Interconnection

Additional information regarding detailed generation interconnection and impact studies is contained in the “Generation Project Interconnection Information” folder in the “Operations and System Planning” area on the ERCOT website: <http://planning.ercot.com/login/login>.

1.1 New Generation Beginning Commercial Operations - none for June 2009

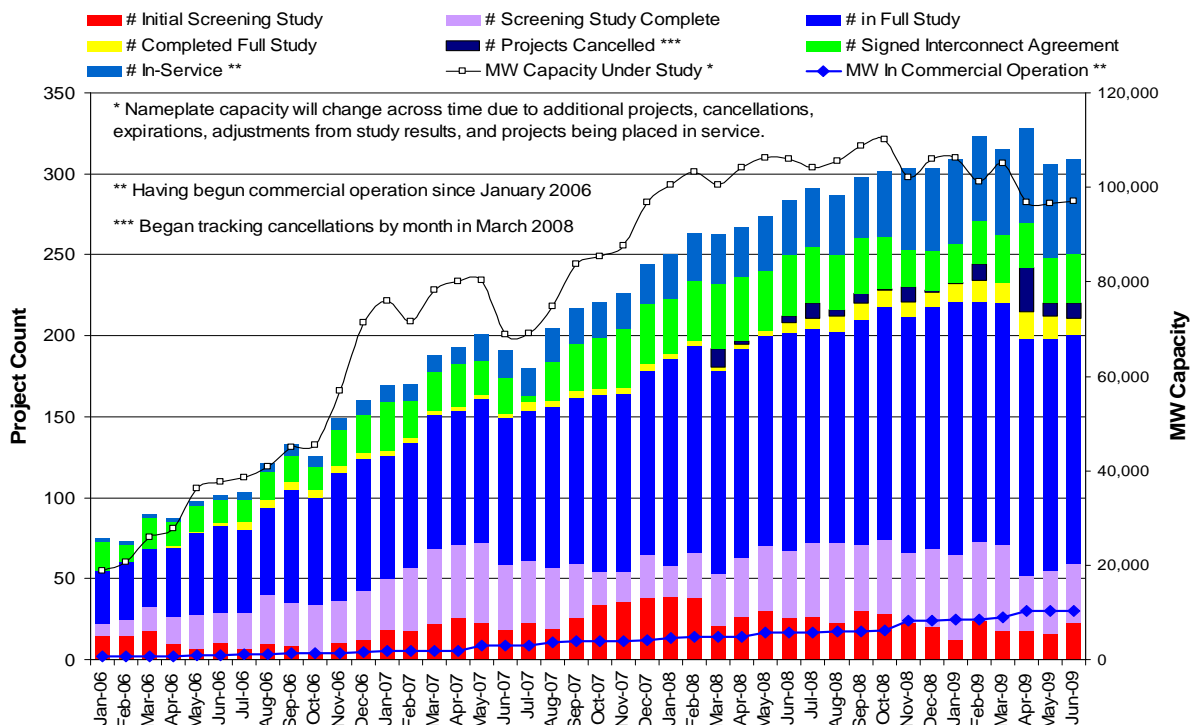
- The total installed wind capacity remains 8,135 MW, of which 7,477 (92%) is located within the Western Congestion Management Zone.

1.2 New Generation Interconnection Agreements

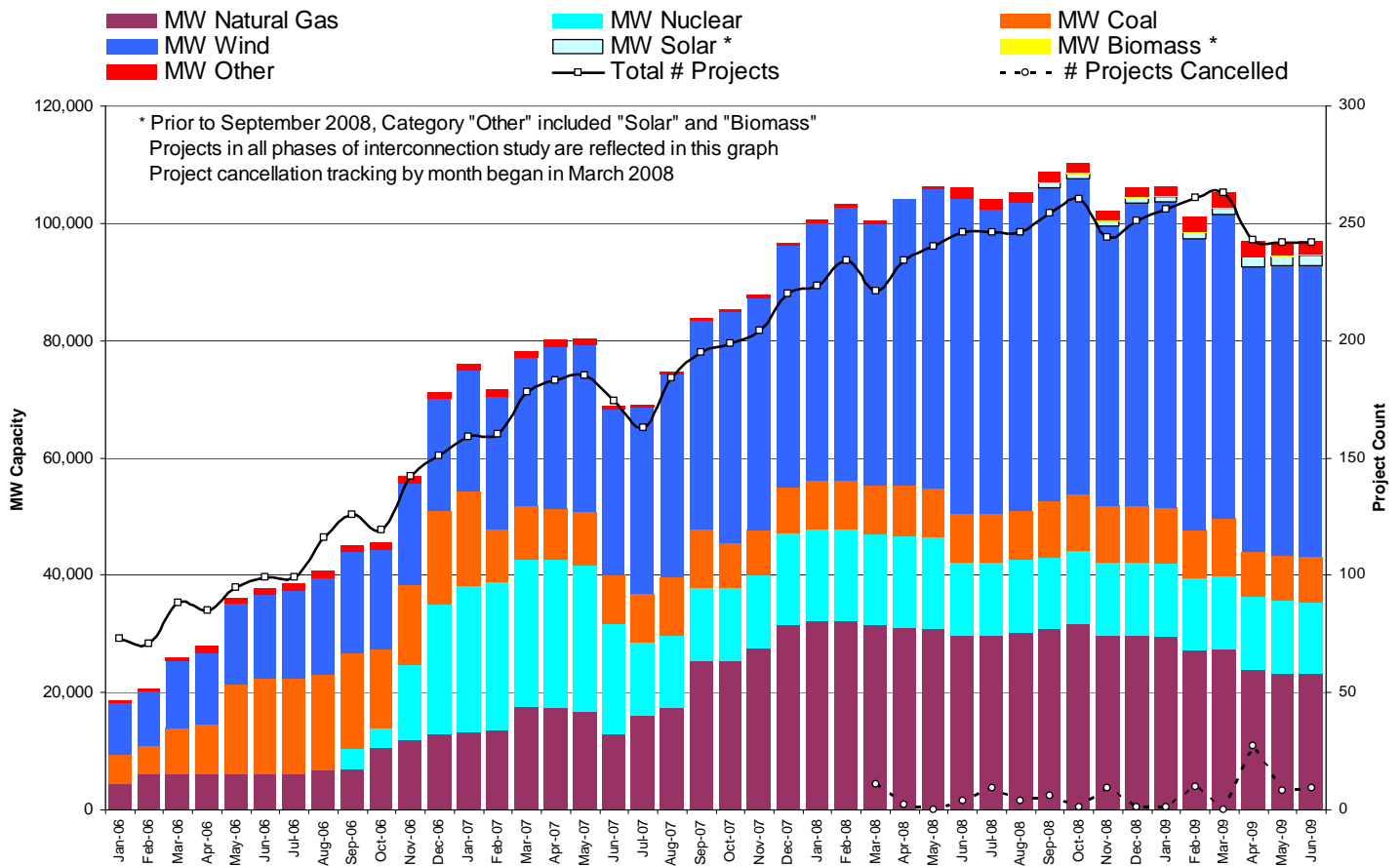
- Rattlesnake Wind Farm (09INR0055) - 200 MW in McCulloch County
- CFB Power Plant Units (09INR0029) - 263 MW in Calhoun County

1.3 Summary of Active Generation Interconnection Requests

GENERATION INTERCONNECTION REQUESTS CURRENTLY BEING PROCESSED				
Currently tracking 242 active generation interconnection or change requests				
As of June 30, 2009	North	South	West	Total
Security Screening Study	5	7	11	23
SSS Completed	2	10	24	36
Full Interconnect Study	29	34	79	142
FIS Completed	2	4	4	10
Interconnect Agreement Completed	8	11	12	31
Capacity under Interconnection Agreements	5,342	2,813	2,203	10,358
Capacity for Grid, MW	22,849	33,766	40,339	96,954
Wind Capacity, MW	3,624	9,434	36,629	49,687



Fuel Type	Confidential Projects (MW)	Projects Under Full Study (MW)	Projects w/ Interconnect Agreement/Public Letter (MW)	Grand Total (MW)
Gas-CC			4,241	21,937
Gas-CT			527	1,277
Total Gas	4,479	13,967	4,768	23,214
Nuclear		3,200	9,186	12,386
Coal		3,732	3,813	7,545
Wind	11,701	30,098	7,888	49,687
Solar	1,401	369		1,770
Biomass		50	145	195
Other	957	1,200		2,157
Grand Total	18,538	52,616	25,800	96,954



1.4 Publicly Disclosed Generation Interconnection Projects

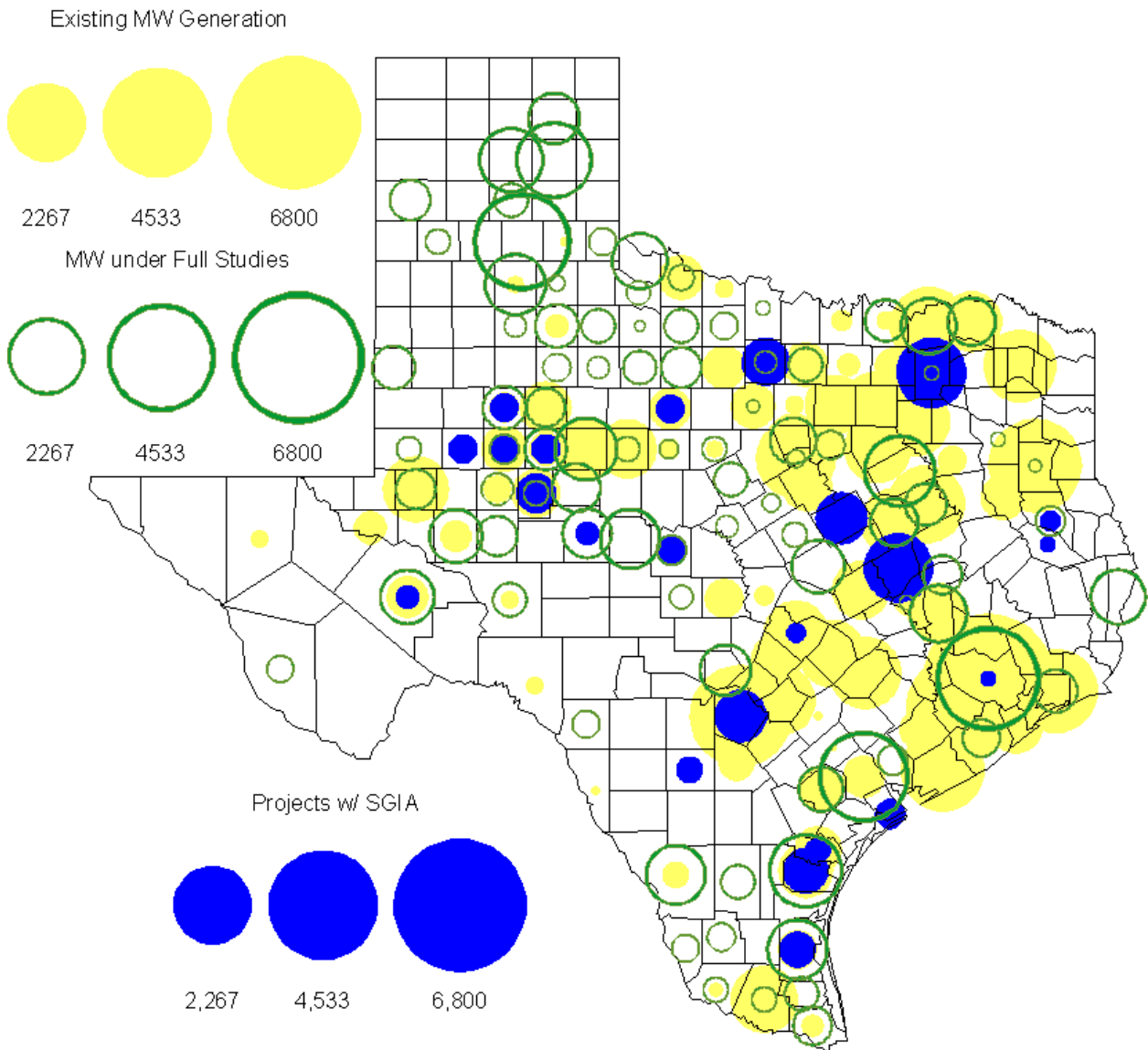
The table below summarizes the publicly disclosed generation projects for the ERCOT region.

(IA=Interconnect Agreement, PL=Public Letter, XX= cancelled)

Generation Interconnections as of June 30, 2009								
INR	SiteName	Status	County	Region	COD	Fuel	MW For Grid	Change from Last Report
09INR0036	McAdoo Energy Center II	PL	Dickens	West	Dec-12	Wind	500	
09INR0079	Pearsall Expansion	IA	Frio	South	Aug-09	Gas-CT	200	
09INR0072	Dansby3	PL	Brazos	North	Aug-09	Gas-CT	48	
08INR0033	Lufkin	IA	Angelina	North	Sep-09	Biomass	45	
05INR0015b	Gulf Wind 2	PL	Kenedy	South	Sep-09	Wind	400	
09INR0028	V H Braunig 6	IA	Bexar	South	Oct-09	Gas-CT	185	
09INR0015	Comanche Peak 1&2 Upgrade	PL	Somervell	North	Oct-09	Nuclear	86	
08INR0012a	Papalote Creek Wind Farm	IA	San Patricio	South	Oct-09	Wind	180	
09INR0038	Barney Davis 2 Repowering	IA	Nueces	South	Nov-09	Gas-CC	360	
11INR0015	Panther Creek 3	IA	Sterling	West	Nov-09	Wind	200	
09INR0006a	Oak Grove SES 1	IA	Robertson	North	Nov-09	Coal	855	
09INR0047	Loraine Windpark	IA	Mitchell	West	Dec-09	Wind	251	
09INR0034	Gatesville Wind Farm	PL	Coryell	North	Dec-09	Wind	200	
08INR0038	M Bar Wind	PL	Andrews	West	Dec-09	Wind	194	
10INR0026	Langford Wind Power	IA	Tom Green	West	Dec-09	Wind	150	
11INR0014	TECO Central Plant	IA	Harris	South	Feb-10	Gas-CC	50	
09INR0037	Scurry County Wind III	PL	Scurry	West	Mar-10	Wind	350	
09INR0039	Nueces Bay 7 Repowering	IA	Nueces	South	Apr-10	Gas-CC	327	
09INR0006b	Oak Grove SES 2	IA	Robertson	North	May-10	Coal	855	
09INR0002	J K Spruce 2	IA	Bexar	South	Jun-10	Coal	750	
09INR0045	Sand Hill Peakers	IA	Travis	South	Jul-10	Gas-CT	94	
06INR0012b	Sherbino Mesa Wind Farm 2	IA	Pecos	West	Jul-10	Wind	150	
05INR0015c	Gulf Wind 3	PL	Kenedy	South	Sep-10	Wind	400	
08INR0011	Senate Wind Project	IA	Jack	North	Nov-10	Wind	150	
09INR0029	CFB Power Plant	IA	Calhoun	South	Dec-10	Coal	263	new IA
12INR0003	Throckmorton Wind Farm	PL	Throckmorton	West	Dec-10	Wind	400	
06INR0022c	Penascal Wind Farm 2	IA	Kenedy	South	Dec-10	Wind	202	
08INR0065	Buffalo Gap 4 and 5	PL	Nolan	West	Mar-11	Wind	465	
07INR0036	Coyote Run Windfarm	IA	Borden	West	Mar-11	Wind	225	
10INR0020	Panda Temple Power	PL	Bell	North	May-11	Gas-CC	1,092	
10INR0010	Jack County 2	IA	Jack	North	Jun-11	Gas-CC	620	
08INR0018	Gunsight Mountain	IA	Howard	West	Aug-11	Wind	120	
09INR0055	Rattlesnake Wind Farm	IA	McCulloch	West	Sep-11	Wind	200	new IA
09INR0060	Stephens Wind Farm	PL	Borden	West	Nov-11	Wind	141	
06INR0026	Wild Horse Mountain	IA	Howard	West	Dec-11	Wind	120	
08INR0025	Pistol Hill Energy Center	PL	Ector	West	Dec-11	Wind	300	
06INR0022b	Penascal Wind Farm 3	IA	Kenedy	South	Dec-11	Wind	202	
09INR0007	Nacogdoches Project	IA	Nacogdoches	North	Apr-12	Biomass	100	
07INR0004	Pampa Energy Center	PL	Gray	West	May-12	Coal	165	
09INR0001	Sandy Creek 1	IA	McLennan	North	Jun-12	Coal	925	
09INR0026a	Sterling Energy Center	PL	Sterling	West	Jun-12	Wind	200	
09INR0026	Sterling Energy Center	IA	Sterling	West	Jun-12	Wind	300	

09INR0024	B&B Panhandle Wind	PL	Carson	West	Jun-12	Wind	1,001	
12INR0004	Fort Concho Wind Farm	PL	Tom Green	West	Jul-12	Wind	400	
08INR0040	Lenorah Project	IA	Martin	West	Sep-12	Wind	251	
06INR0006	Cobisa-Greenville	IA	Hunt	North	May-13	Gas-CC	1,792	
04INR0011c	Cottonwood Wind	IA	Shackelford	West	Jun-13	Wind	100	
04INR0011b	Mesquite Wind Phase 4	IA	Shackelford	West	Jun-13	Wind	136	
11INR0011	Victoria City Nuclear	PL	Victoria	South	Jan-15	Nuclear	3,200	
15INR0008	STP 3 and 4	PL	Matagorda	South	Jan-15	Nuclear	2,700	
15INR0002	Comanche Peak 3 and 4	PL	Somervel	North	Jan-15	Nuclear	3,200	
							25,800	

County Location of Installed Generation and Interconnection Requests (all fuels)



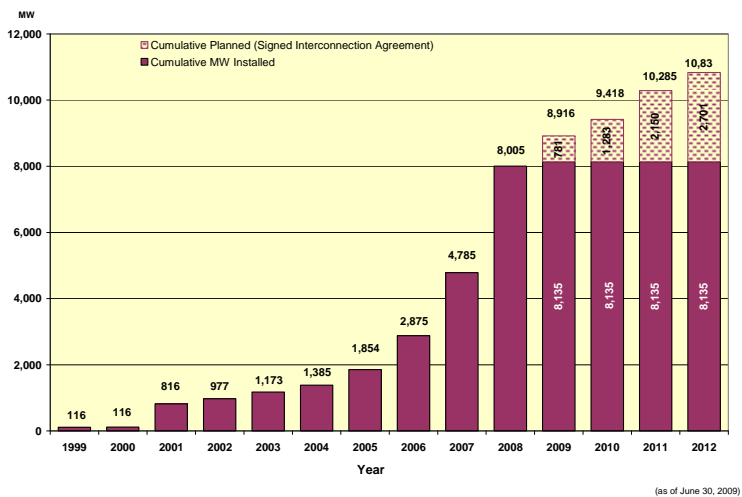
1.5 Generation Projects Undergoing Full Interconnection Studies

INR	County	Capacity	COD	Fuel		INR	County	Capacity	COD	Fuel
08INR0044	Concho	200	TBD	Wind		09INR0064	Borden	41	TBD	Wind
08INR0042	Coke	200	TBD	Wind		08INR0041	Coke	200	TBD	Wind
09INR0059	Freestone	20	TBD	Coal		09INR0025	Concho	180	TBD	Wind
09INR0075	Kinney	248	Oct-09	Wind		07INR0014b	Wilbarger	70	Oct-09	Wind
10INR0027	Nueces	35	Oct-09	Wind		09INR0041	Mitchell	300	Oct-09	Wind
07INR0014a	Wilbarger	140	Oct-09	Wind		09INR0048	Jack	150	Oct-09	Wind
08INR0054	Comanche	401	Oct-09	Wind		09INR0073	Scurry	200	Nov-09	Wind
08INR0031	Childress	100	Nov-09	Wind		09INR0082	Webb	300	Dec-09	Wind
09INR0077	Reagan	500	Dec-09	Wind		11INR0013	Mills	150	Dec-09	Wind
11INR0012	Duval	400	Dec-09	Wind		09INR0065	Webb	150	Dec-09	Wind
09INR0061	Kent	258	Dec-09	Wind		09INR0058	Howard	250	Dec-09	Wind
09INR0054	Stonewall	148.5	Dec-09	Wind		09INR0051	Borden	249	Dec-09	Wind
08INR0056	Nolan	149	Dec-09	Wind		08INR0039	Hamilton	90	Dec-09	Wind
08INR0022	Floyd	100	Dec-09	Wind		08INR0023	Floyd	100	Dec-09	Wind
10INR0011	Johnson	275	Jan-10	Gas		10INR0048	Hardeman	1000	Jan-10	wind
10INR0047	Kendall	1000	Jan-10	wind		11INR0036a	Matagorda	200	Jan-10	Wind
11INR0033a	Cameron	200	Jan-10	Wind		10INR0024	Briscoe	3000	Jan-10	Wind
10INR0046	Jim Hogg	264	Apr-10	wind		10INR0045	Webb	734	Apr-10	wind
10INR0079	Nolan	60	May-10	Wind		10INR0054	Palo Pinto	36	May-10	Wind
09INR0069	Reagan	36	May-10	Wind		09INR0070	Reagan	42	May-10	Wind
10INR0023	Haskell	386	May-10	Wind		10INR0016	Childress	150	May-10	Wind
09INR0035	Concho	750	May-10	Wind		09INR0018	Concho	249	May-10	Wind
07INR0032	Tom Green	249	May-10	Wind		10INR0069	Rusk	818	May-10	Coal
09INR0081	Rusk	818	Jun-10	Coal		10INR0035	Harris	416	Jun-10	Gas
10INR0029	Hood	810	Jun-10	Gas		10INR0057	Taylor	200	Jul-10	Wind
10INR0052a	Knox	21	Jul-10	Wind		10INR0013	Upton	400	Jul-10	Wind
10INR0038	Glasscock	350	Aug-10	Wind		10INR0071	Matagorda	88	Sep-10	Wind
09INR0074	Motley	70	Oct-10	Wind		10INR0041	Floyd	135	Oct-10	Wind
10INR0015	Mitchell	350	Oct-10	Wind		10INR0070	Hunt	50	Nov-10	Gas
11INR0029	Throckmorton	200	Nov-10	Wind		10INR0039	Dickens	200	Nov-10	Wind
10INR0032	Navarro	800	Dec-10	Gas		09INR0031	Ector	275	Dec-10	Gas
10INR0080	Presidio	144	Dec-10	Solar		10INR0077	Callahan	101	Dec-10	Wind
10INR0060	Willacy	400.5	Dec-10	Wind		10INR0059	Zapata	250.7	Dec-10	Wind
10INR0056	Borden	249	Dec-10	Wind		10INR0051	Brazoria	200	Dec-10	wind
09INR0076	Jackson	300	Dec-10	Wind		10INR0042	Mason	170	Dec-10	Wind
10INR0033	Armstrong	420	Dec-10	Wind		10INR0019	Deaf Smith	609	Dec-10	Wind
08INR0062	Archer	249	Dec-10	Wind		08INR0061	Hardeman	200	Dec-10	Wind
10INR0008	Pecos	500	Dec-10	Wind		07INR0035	Tom Green	270	Dec-10	Wind
07INR0026	Baylor	400	Dec-10	Wind		07INR0015	Foard	180	Dec-10	Wind
07INR0013	Coke	200	Dec-10	Wind		11INR0036b	Matagorda	200	Jan-11	Wind
11INR0033b	Cameron	200	Jan-11	Wind		11INR0050	Crosby	149	Mar-11	Wind
11INR0037	Smith	55	May-11	Biomass		11INR0048	Harris	300	May-11	Gas
11INR0046	Brazoria	300	May-11	Gas		11INR0028	Grimes	1280	May-11	Gas
11INR0061	Presidio	90	May-11	Solar		11INR0058	Pecos	135	May-11	Solar

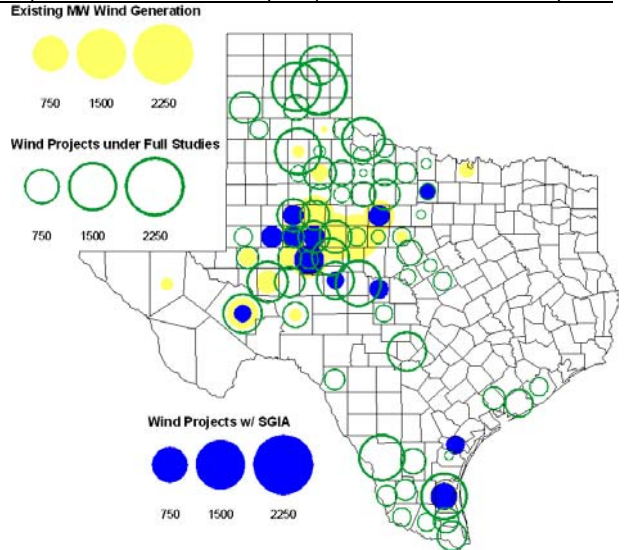
10INR0009	Castro	200	May-11	Wind		11INR0009	Navarro	1200	Jun-11	Gas
09INR0050	Fannin	1200	Jun-11	Gas		11INR0019	Upton	200	Jun-11	Wind
08INR0020	Eastland	200	Jun-11	Wind		11INR0006	Lamar	579	Jul-11	Gas
11INR0040	freestone	749	Aug-11	Gas		11INR0039	Starr	201	Sep-11	Wind
11INR0008a	Roberts	1000	Sep-11	Wind		10INR0021	Grayson	646	Nov-11	Gas
11INR0043	Coke	300	Dec-11	Wind		11INR0025	Crockett	400	Dec-11	Wind
11INR0005	Upton	500	Dec-11	Wind		06INR0022d	Kenedy	200	Dec-11	Wind
10INR0018	Madison	550	Mar-12	Gas		12INR0007	Lamar	296	May-12	Gas
12INR0006	Limestone	875	Jun-12	Coal		10INR0022	Harris	3500	Jun-12	Gas
12INR0002	Briscoe	750	Jul-12	Wind		12INR0016	Nueces	1200	Nov-12	Other
08INR0019c	Gray	250	Nov-12	Wind		08INR0019b	Gray	250	Nov-12	Wind
08INR0019a	Gray	250	Nov-12	Wind		12INR0022	Hidalgo	200	Dec-12	Wind
12INR0018	Gray	600	Dec-12	Wind		11INR0023	King	400	Dec-12	Wind
12INR0005	Floyd	1100	Dec-12	Wind		06INR0022f	Kenedy	200	Dec-12	Wind
12INR0009	Nueces	875	May-13	Gas		13INR0006	Gray	750	Oct-13	Wind
13INR0005	Carson	600	Oct-13	Wind		06INR0022e	Kenedy	200	Dec-13	Wind
14INR0002	Goliad	756	Feb-14	Coal		14INR0003	Nolan	850	Jun-14	Coal
14INR0005	Matagorda	1200	Jul-14	coal		14INR0001	Pecos	500	Dec-14	Wind
15INR0003	Matagorda	3200	Jan-15	Nuclear						

1.6 Wind Generation

Wind Capacity Installed by Year



County Location of Installed Capacity and Interconnection Requests



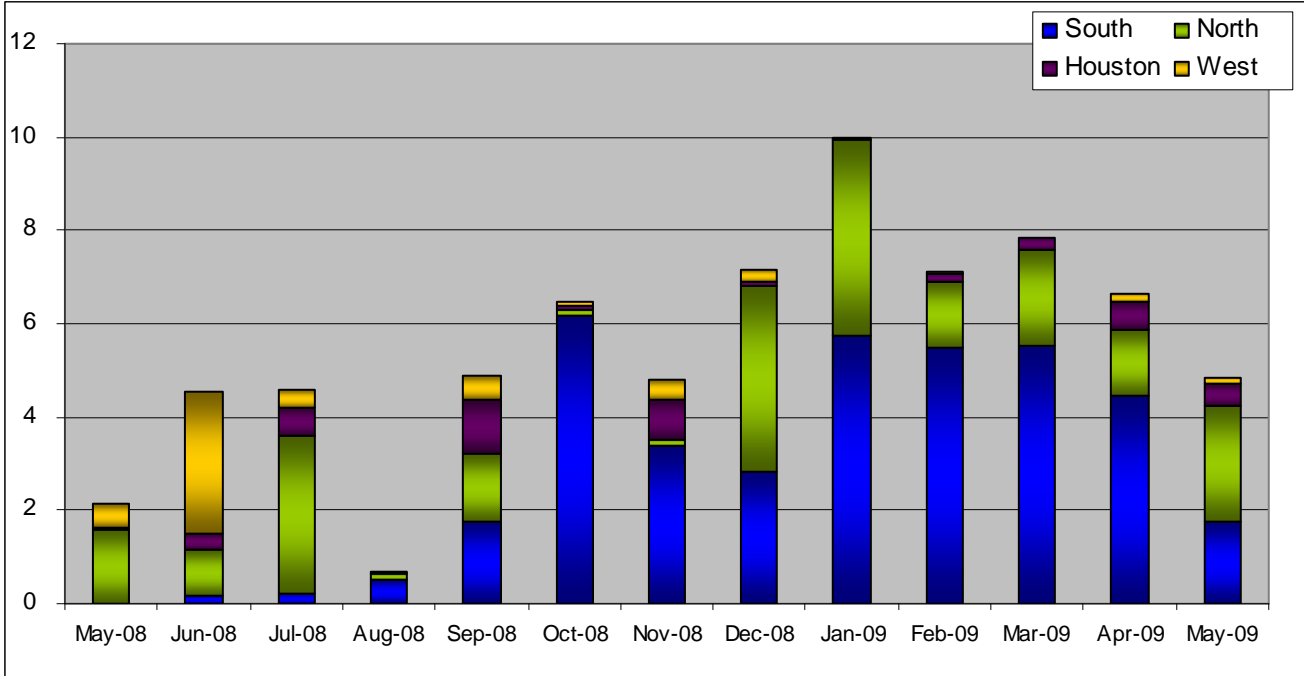
2. Regional Planning Group Project Reviews

- American Electric Power Service Corporation submitted a project to construct 2 new 138 kV substations, rebuild a 138 kV circuit, build 2 new 138 kV circuits, and install a new 138/69 kV autotransformer in the Abilene/San Angelo area. The estimated cost of this project is \$105.9 M. The review of this project is complete and an ERCOT Endorsement Letter is in process.
- Oncor submitted a project to relieve congestion related to new wind units in the Lamesa area. The project will upgrade the Lamesa to Bluff Creek 138 kV line, rebuild the Bluff Creek to China Grove 138 kV line, rebuild the Lamesa to Ackerly Vealmoor 69 kV line to 138/69 kV double circuit, rebuild the Lamesa 138 kV switching station, build a new 138 kV Ackerly Vealmoor station, add second circuits to all rebuilt lines and include station upgrades at China Grove and Big Spring. The cost of this project is \$ 80.8 M. This project will be reviewed to ensure that the improvements fit into the likely CREZ transmission solution for the area. This project is in ERCOT Independent Review and will be studied as part of the 2009 Five-Year Transmission Plan.
- Oncor submitted a project to add several 345 kV circuits to support the addition of Comanche Peak units 3 and 4 in 2015 at an estimated cost of \$ 133 M. These upgrades include a new 345 kV double circuit line with one circuit in place from Comanche to Whitney, a new 345 kV line from Comanche to Johnson Switch, a new circuit on existing structures from Johnson Switch to Everman, a new 345 kV double circuit with one circuit in place from Comanche to DeCordova, and a new 345 kV line on existing structures from Comanche to Parker Switch. This project is in ERCOT Independent Review and will be studied when the 2009 Five-Year Transmission Plan is complete.
- Sharyland Utilities submitted a project to construct and operate the ERCOT Southeast Loop facilities consisting of a 345 kV double circuit from Lufkin to Canal 345 kV substation on the northeast side of Houston. This project will cost \$359 M with an estimated completion date of summer 2013. This project is in ERCOT Independent Review and will be studied as part of the 2009 Five-Year Transmission Plan.
- Austin Energy submitted a project to relocate the Decker to Techridge circuit to new ROW so that the existing structures can be utilized for the new Gilleland to Techridge circuit. The estimated completion date of this project is November 2010 and estimated cost is \$ 4.3 M. The review of this project is complete and an ERCOT Endorsement Letter is in process.
- Centerpoint Energy has submitted a project to expand the Zenith substation, add one 800 MVA autotransformer, connect Zenith to existing circuits near the Gertie substation and upgrade/reconfigure nearby 138 kV circuits. The estimated completion date of this project is summer 2012 and estimated cost is \$ 26.6 M. This project is in ERCOT Independent Review.
- American Electric Power Service Corporation submitted a project to construct several improvements in the Corpus Christi area. The estimated completion date of this project is June 2012 and estimated cost is \$ 214 M. This project is in ERCOT Independent Review.

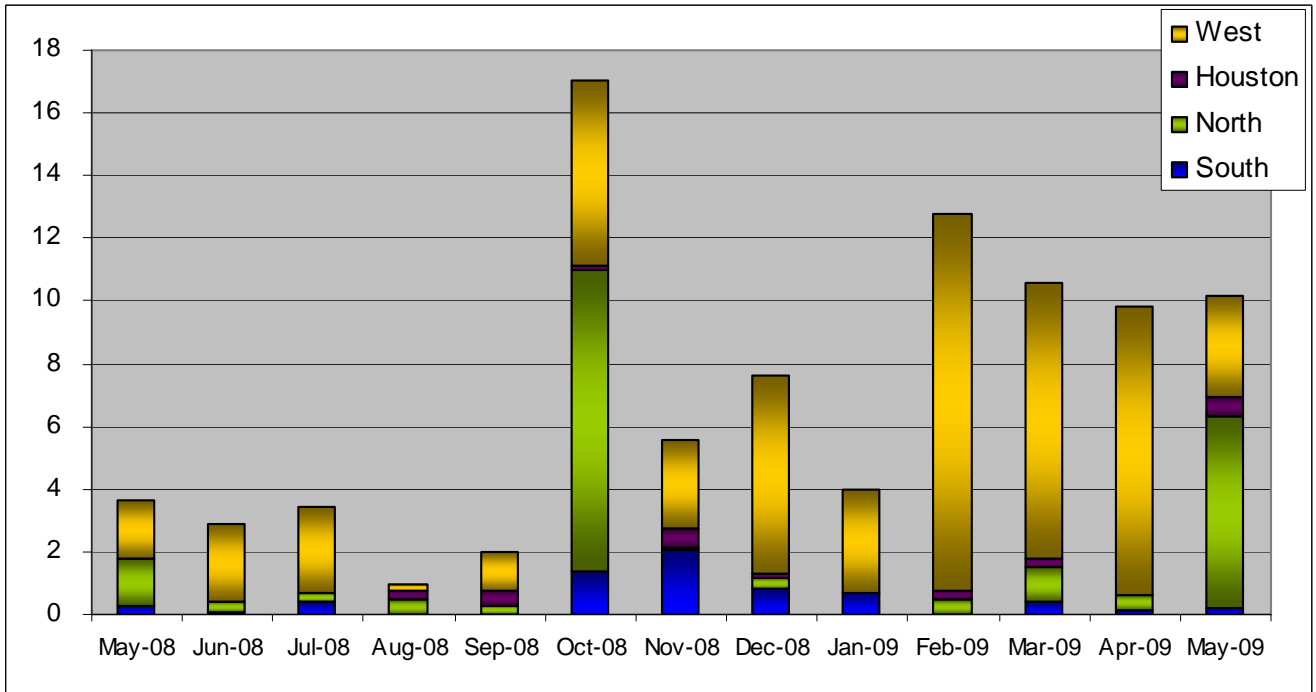
3. Congestion Costs

Dollars shown in graphs are settlement quality.

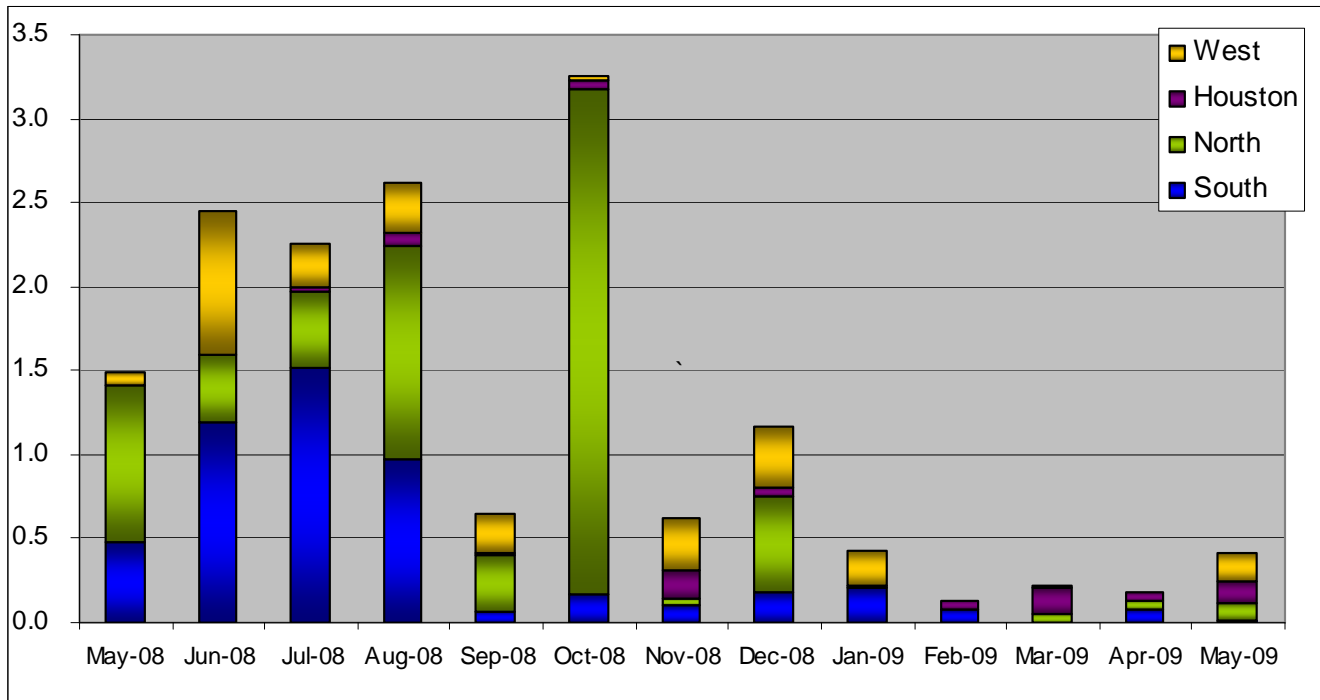
OOMC – last 13 months in million\$



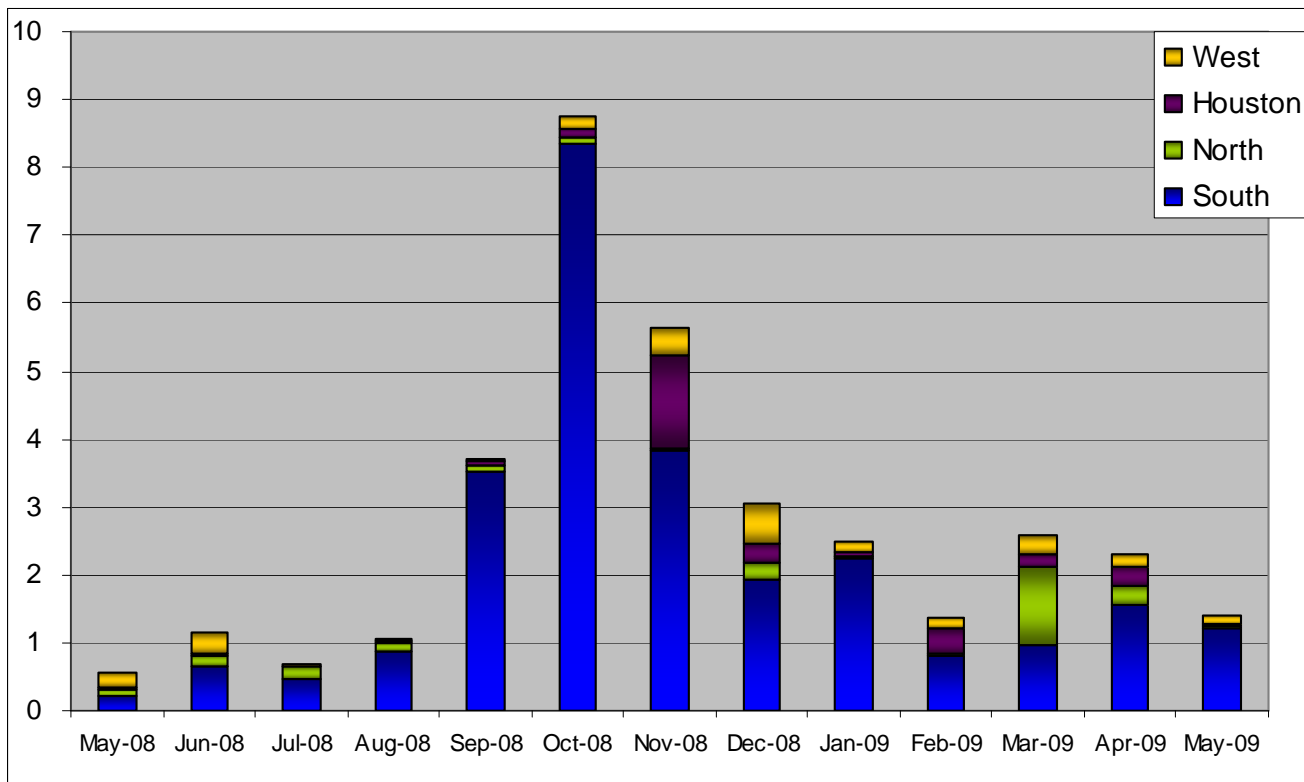
OOM Down – last 13 months in million\$



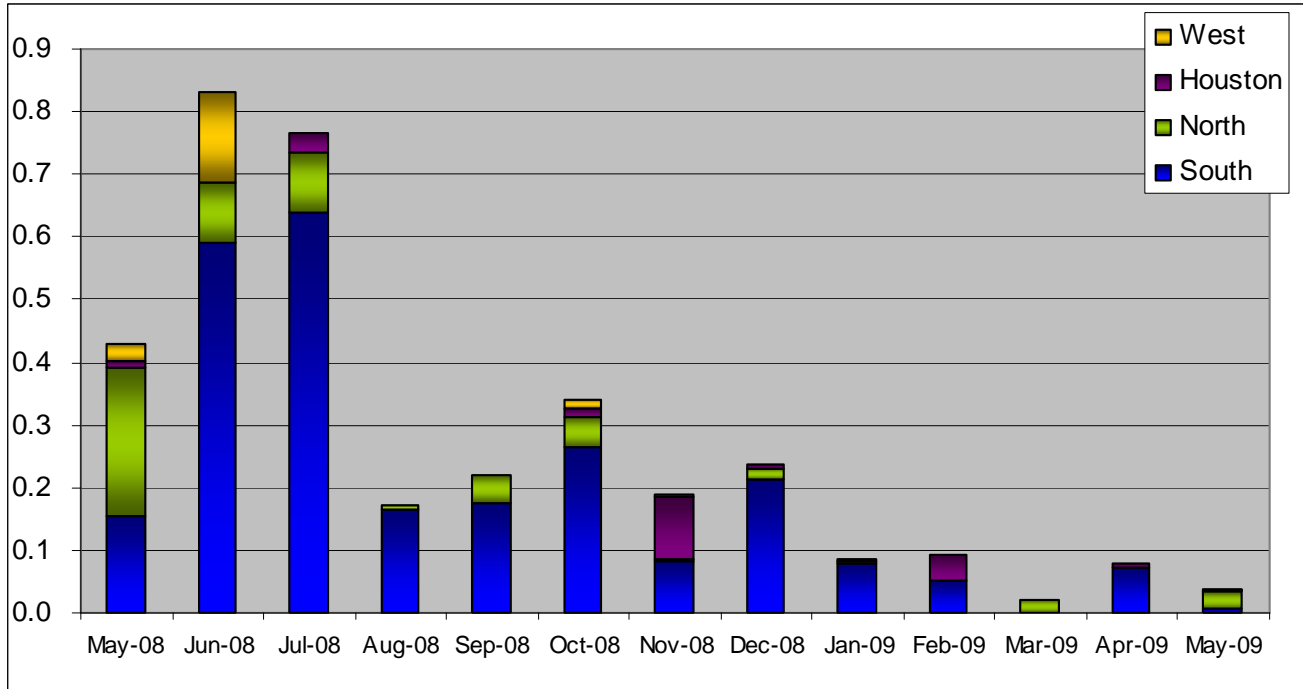
Balancing Energy Down – last 13 months in million\$



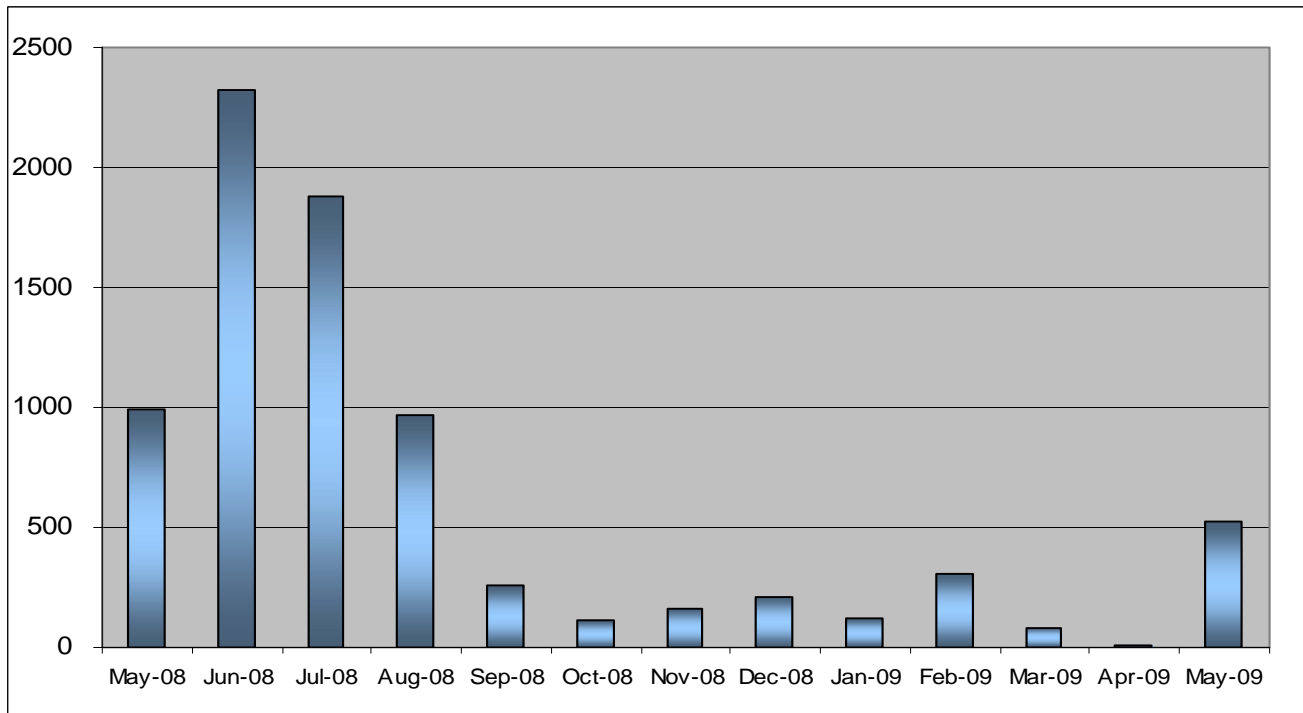
OOM Up – last 13 months in million\$



Balancing Energy Up – last 13 months in million\$



Replacement Reserve – last 13 months in thousand\$



Binding Constraints – June, 2009

Contingency	Binding Element	Estimated Costs	Transmission Project
Menard - Gillespie 138kV	Menard Auto	\$ 3,620,392.10	Yellowjacket, Add 2nd 69/138 kV Auto
Skyline to Marion & Elm Creek 345	Marion - Hill Country 345kV	\$ 3,159,056.69	Hill Country to Skyline - 345 kV 2nd Circuit
Temple Pecan Creek - Tradinghouse & Temple Switch - Long Creek SES	San Angelo Power Station - Shrew Tap	\$ 2,923,976.71	San Angelo Power Station, to Menard 138 kV line improvements
	Capacity Shortage	\$ 2,545,381.69	
Watermill - West Levee SW & Sargent Road	Watermill - DeSoto	\$ 1,832,359.56	Trinidad – Watermill 345kV line
Watermill - DeSoto Switch - Cedar Hill Switch 345kV	Watermill - DeSoto	\$ 1,582,548.73	Trinidad – Watermill 345kV line
Oklaunion - Fisher Road - Bowman 345kV	Vernon - Grayback 69kV	\$ 891,532.81	Fisher Road - Wichita Falls 138 kV line upgrade
Tradinghouse - Venus Switch 345kV	Rogers Hill - Elm Mott 138kV	\$ 839,174.75	Elm Mott - Waco Northcrest 138 kV line upgrade N. Waco - NE. Waco 138 kV line upgrade
Dilley Switch - San Miguel 138kV	Derby - Pearsall 69kV	\$ 704,606.56	Pearsall to Dilley 69 kV Line Upgrade
Tradinghouse - Venus Switch 345kV	Rogers Hill - Bosque Switch 138kV	\$ 513,791.87	Elm Mott - Waco Northcrest 138 kV line upgrade N. Waco - NE. Waco 138 kV line upgrade

Binding Constraints – May 2009

Contingency	Binding Element	Estimated Costs	Transmission Project
Comanche Peak SES - DeCordova SES & Wolf Hollow - Rocky Creek 345kV	Venus Switch - Comanche Peak 345kV	\$ 3,515,768.74	Venus - Cedar Hill 345 kV line upgrade
Watermill - DeSoto Switch - Cedar Hill Switch 345kV	Watermill - DeSoto	\$ 1,966,940.07	Trinidad – Watermill 345kV line
Comanche Peak SES-DeCordova SES & Wolf Hollow-Rocky Creek 345kV	Comanche Peak SES - Parker Switch 345KV	\$ 1,652,826.07	Willow Creek - Parker 345 kV line rebuild as double circuit
Capacity Shortage		\$ 1,613,065.72	
Comanche Peak SES-DeCordova SES-Wolf Hollow 345kV	Parker Switch - Benbrook Switch 345KV	\$ 1,160,067.25	Parker Switch - Everman 345 kV line
Comanche Peak SES-DeCordova SES & Wolf Hollow-Rocky Creek 345kV	Venus Switch - Johnson Switch TU 345kV	\$ 744,535.01	Venus - Cedar Hill 345 kV line upgrade
Valley Import		\$ 732,379.13	
PH Robinson 345/138kV Autotransformer #3	PH Robinson AT1 345/138KV Transformer	\$ 468,812.45	P.H. Robinson - Oasis Ckt.99
Graham-Long Creek 345kV	San Angelo Power Station - Shrew Tap	\$ 449,743.68	San Angelo Power Station, to Menard 138 kV line improvements
Replacement Reserve Service		\$ 444,068.87	

4. Other Notable Activities

All postings referred to below can be found at <http://planning.ercot.com/login/login> unless otherwise indicated.

- The reliability phase of the 2009 Five-Year Transmission Plan utilizing the latest SSWG base cases is underway. Projects to eliminate unserved energy in 2014 have been identified and coordinated with ERCOT TSPs. Projects to eliminate unserved energy in the remaining years of the 5 year horizon are being studied along with projects needed to eliminate unserved energy in 2014 with specific generating units or combined cycle trains not available.
- RMR exit strategy development is almost complete for the Permian Basin RMR unit.
- The Voltage Ride Through Study has started. Phase I of the study was initiated with the contingency selection process. This is the first part of this phase needed to determine if more VRT capability is needed using the existing wind farm models. Phase II will consist of model improvement. Both of these phases are scheduled for completion by the End of 2009. Phase III involves simulating the VRT capabilities of the system with the revised models and investigation of any required changes.
- Steady-State Working Group Data Set A cases for the 2010 Summer and Winter 2011 peak are complete and posted on the Planning and Operations Information web site. The remainder of the cases will be completed and posted by July 14, 2009.